



1 CULTIVATED EDGE DETAIL

SCALE: NTS

Landscape Calculations/Requirements

	Quantity	Required	Provided
Site Area	980,107		
Open Space			
Pervious landscape areas	629,601.00		
1 tree/ 5,000 SF of total OS area		125.92	126
2 shrubs/ 5,000 SF of total OS area		251.84	252
Street Trees			
NE Douglas St. (minus driveways)	1421.00		
20' Insc buffer		Y	Y
1 tree/30 LF of frontage		47.37	48
1 shrub/20 lf of frontage		71.05	72
1 shrub/20 lf of frontage		20	20
Perimeter Parking	283		
NE Douglas St.	LF	14.15	15
Screening @ 2.5' ht parallel to the street		Y	Y
Interior Parking (stall area)	16,720.00		
5% of parking lot area	SF	836.00	1,250.00
1 island/every 4 rows of pkng		Y	Y
1 island at end of row		Y	Y
islands to be planted w/trees, shrubs, grass, groundcover		Y	Y
Site Utilities			
site features to be effectively screened from the road & adj sites		Y	Y

Planting Notes

1. Location of all existing utilities needs to be done before commencing work.
2. The planting plan graphically illustrates overall plant massings. Each plant species massing shall be placed in the field to utilize the greatest coverage of ground plane. The following applies for individual plantings:
  - a. Creeping groundcover shall be a minimum of 6" from paving edge.
  - b. All trees shall be a minimum of 3' from paving edge.
  - c. All plants of the same species shall be equally spaced apart and placed for best aesthetic viewing.
  - d. All shrubs shall be a minimum of 2' from paved edge.
3. Mulch all planting bed areas to a minimum depth of 3". Mulch individual trees to a minimum depth of 4".
4. Note: If plants are not labeled - they are existing and shall remain.
5. In the event of work in or on a JCW sanitary main, any trees or plantings placed within the sewer easement may be removed without replacement or compensation there-of and shall be replaced by the property owner as required by the City
6. All landscaped areas in ROW shall be sodded and irrigated unless otherwise specified.

Materials:  
1. Plant material shall be healthy, vigorous, and free of disease and insects as per AAN standards.  
2. Shredded bark mulch installed at trees shall be finely chipped and shredded hardwood chips, consisting of pure wood products and free of all other foreign substances. Pine bark compost mulch installed at planting bed areas shall be free of all other foreign substances.

- Installation:
1. All planting beds shall be amended with 1 cubic yard of peat moss per 1,000 square feet. Till peat moss into soil to a 6" depth. A 10-10-10 fertilizer shall be spread over all planting areas prior to planting, at a rate of 50 pounds per 2,000 square feet.
  2. After plants have been installed, all planting beds shall be treated with Dacthal pre-emergent herbicide prior to mulch application.
  3. Plant pit backfill for trees and shrubs shall be 50% peat or well composted manure and 50% topsoil.
  4. Plant material shall be maintained and guaranteed for a period of one year after Owner's acceptance of finished job. All dead or damaged plant material shall be replaced at Landscape Contractor's expense.
  6. Landscape contractor shall maintain all plant material until final acceptance, at which point the one year guarantee begins.

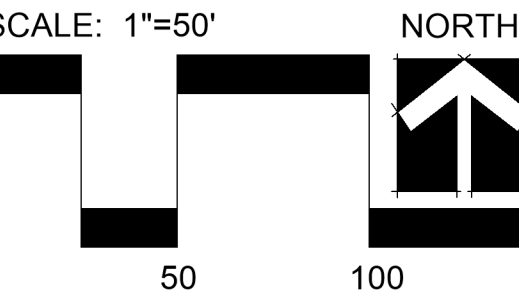
Landscape Schedule (Typ. Foundation Plantings Not included)

Symbol	Qty.	Botanical Name	Common Name	Min.Root	Min.Size	Caliper	Remarks
OVERSTORY TREES							
	33	Nyssa sylvatica	Black Tupelo			2.5"	6' min. clear., ground to canopy
	36	Quercus rubra	Northern Red Oak			2.5"	6' min. clear., ground to canopy
	26	Gleditsia triacanthos "Shademaster"	Shademaster Honeylocust			2.5"	6' min. clear., ground to canopy
	15	Platanus x acerifolia	London Plane Tree			2.5"	6' min. clear., ground to canopy
	62	Acer x truncatum "Warrenred"	Pacific Sunset Maple			2.5"	6' min. clear., ground to canopy
EVERGREEN TREES							
	0	Juniperus chinensis "Keteleeri"	Keteleeri Juniper		6' ht.		symmetrical pyramidal form
	0	Juniper chinensis	Eastern Red Cedar		6' Ht.		symmetrical pyramidal form
	0	Picea abies	Norway Spruce		6' ht.		symmetrical pyramidal form
ORNAMENTAL TREES							
	7	Cercis canadensis	Eastern Redbud			1.5"	
	0	Populus tremuloides "Quaking"	Quaking Aspen			1.5"	5' min. clear.
DECIDUOUS SHRUBS							
	31	Spiraea x bumalda "Limeground"	Limeground spirea	3 gal.			Plant @ 3' O.C.
	140	Hydrangea paniculata "Quick Fire"	Little Quick Fire Hydrangea	3 gal.			Plant @ 4' O.C.
	37	Syringa X "Penda"	Blooming Purple Lilac	5 gal.			Plant @ 5' O.C.
EVERGREEN SHRUBS							
	158	Juniperus chinensis "Sea Green"	Sea Green Juniper	3 gal.			Plant @ 4' O.C.
	42	Juniperus chinensis "Gold Coast"	Gold Coast Juniper	3 gal.			Plant @ 4' O.C.
	6	Juniperus chinensis "Spartan"	Spartan Juniper		5' ht.		Symmetrical pyramidal form
GROUNDCOVERS AND GRASSES							
	0	Festuca ovina glauca	Dwarf Blue Fescue	1 gal.			Plant @ 18" O.C.
	0	Calamagrostis acutiflora "Karl Foerster"	Feather Reed Grass	1 qt.			Plant @ 18" O.C.
PERENNIALS							
	22	Allium "Millenium"	Onion - Ornamental	1 gal.			Plant @ 18" O.C.
EXISTING TREES/SHRUBS TO BE PRESERVED							



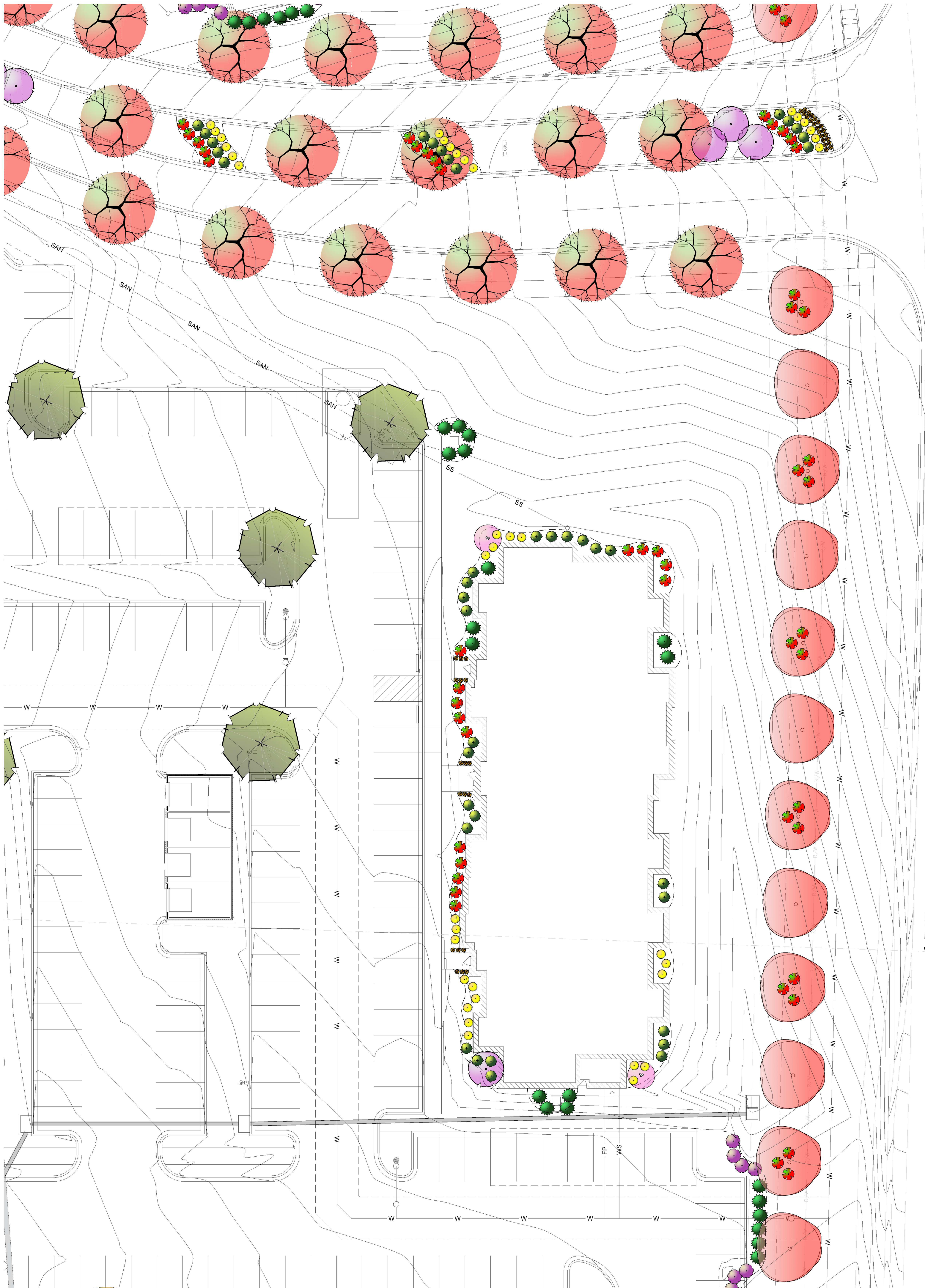
CLIENT  
Alura Apartments

PROJECT  
Alura Apartments  
NE Douglas Street  
Lee's Summit MO



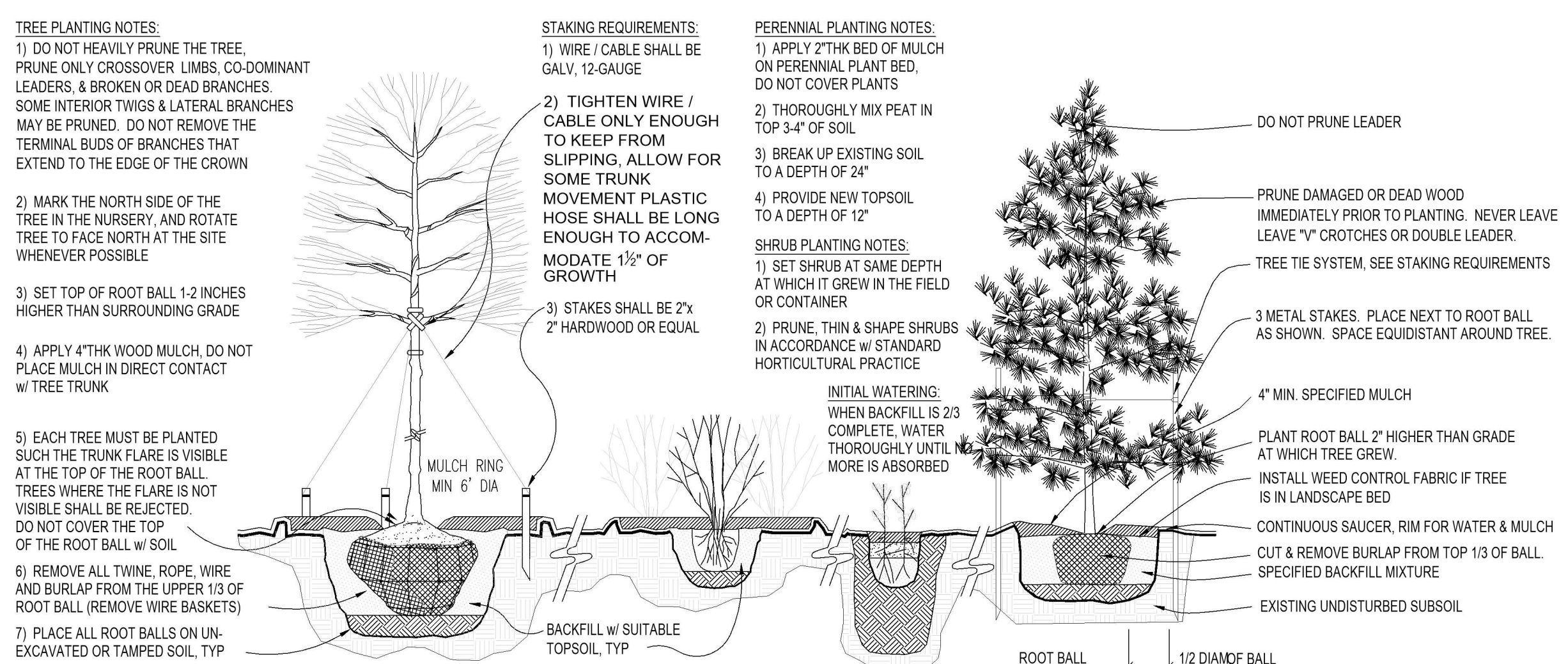
Date: 6.13.2025  
Project #: 1190  
Landscape Plan





1 LANDSCAPE PLAN (TYPICAL BUILDING PLANTING PLAN)  
SCALE: 1"=20'-0"

2 PLANTING INSTALLATION DETAILS  
SCALE: NTS



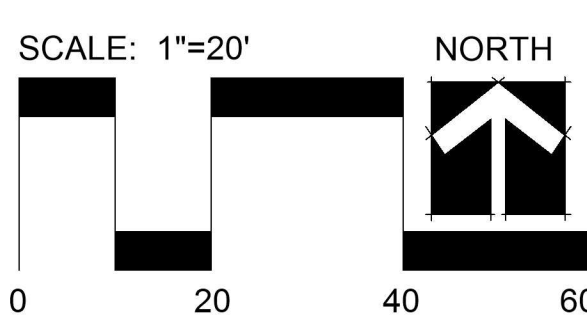
Landscape Schedule (Typ. Foundation Plantings Not included)

Symbol	Qty.	Botanical Name	Common Name	Min.Root	Min.Size	Caliper	Remarks
OVERSTORY TREES							
	33	<i>Hyssa sylvatica</i>	Black Tupelo			2.5"	6" min. clear., ground to canopy
	36	<i>Quercus rubra</i>	Northern Red Oak			2.5"	6" min. clear., ground to canopy
	26	<i>Gleditsia triacanthos</i> "Shademaster"	Shademaster Honeylocust			2.5"	6" min. clear., ground to canopy
	15	<i>Platanus x acerifolia</i>	London Plane Tree			2.5"	6" min. clear., ground to canopy
	62	<i>Acer x truncatum</i> "Warrenred"	Pacific Sunset Maple			2.5"	6" min. clear., ground to canopy
EVERGREEN TREES							
	0	<i>Juniperus chinensis</i> "Keteleeri"	Keteleeri Juniper			6" ht.	symmetrical pyramidal form
	0	<i>Juniper chinensis</i>	Eastern Red Cedar			6" ht.	symmetrical pyramidal form
	0	<i>Picea abies</i>	Norway Spruce			6" ht.	symmetrical pyramidal form
ORNAMENTAL TREES							
	7	<i>Cercis canadensis</i>	Eastern Redbud			1.5"	
	0	<i>Populus tremuloides</i> "Quaking"	Quaking Aspen			1.5"	5" min. clear.
DECIDUOUS SHRUBS							
	31	<i>Spiraea x bumalda</i> "Limemound"	Limemound spirea		3 gal.		Plant @ 3' O.C.
	140	<i>Hydrangea paniculata</i> "Quick Fire"	Little Quick Fire Hydrangea		3 gal.		Plant @ 4' O.C.
	37	<i>Syringe</i> X "Penda"	Bloomenang Purple Lilac		5 gal.		Plant @ 5' O.C.
EVERGREEN SHRUBS							
	158	<i>Juniperus chinensis</i> "Sea Green"	Sea Green Juniper		3 gal.		Plant @ 4' O.C.
	42	<i>Juniperus chinensis</i> "Gold Coast"	Gold Coast Juniper		3 gal.		Plant @ 4' O.C.
	6	<i>Juniperus chinensis</i> "Spartan"	Spartan Juniper		5' ht.		Symmetrical pyramidal form
GROUNDCOVERS AND GRASSES							
	0	<i>Festuca ovina glauca</i>	Dwarf Blue Fescue		1 gal.		Plant @ 18" O.C.
	0	<i>Calamagrostis acutiflora</i> "Karl Foerster"	Feather Reed Grass		1 qt.		Plant @ 18" O.C.
PERENNIALS							
	22	<i>Allium</i> "Millenium"	Onion - Ornamental		1 gal.		Plant @ 18" O.C.
EXISTING TREES/SHRUBS TO BE PRESERVED							



CLIENT  
Alura Apartments

PROJECT  
Alura Apartments  
Lee's Summit MO



Date: 6.13.2025  
Project #: 1190  
Landscape Plan