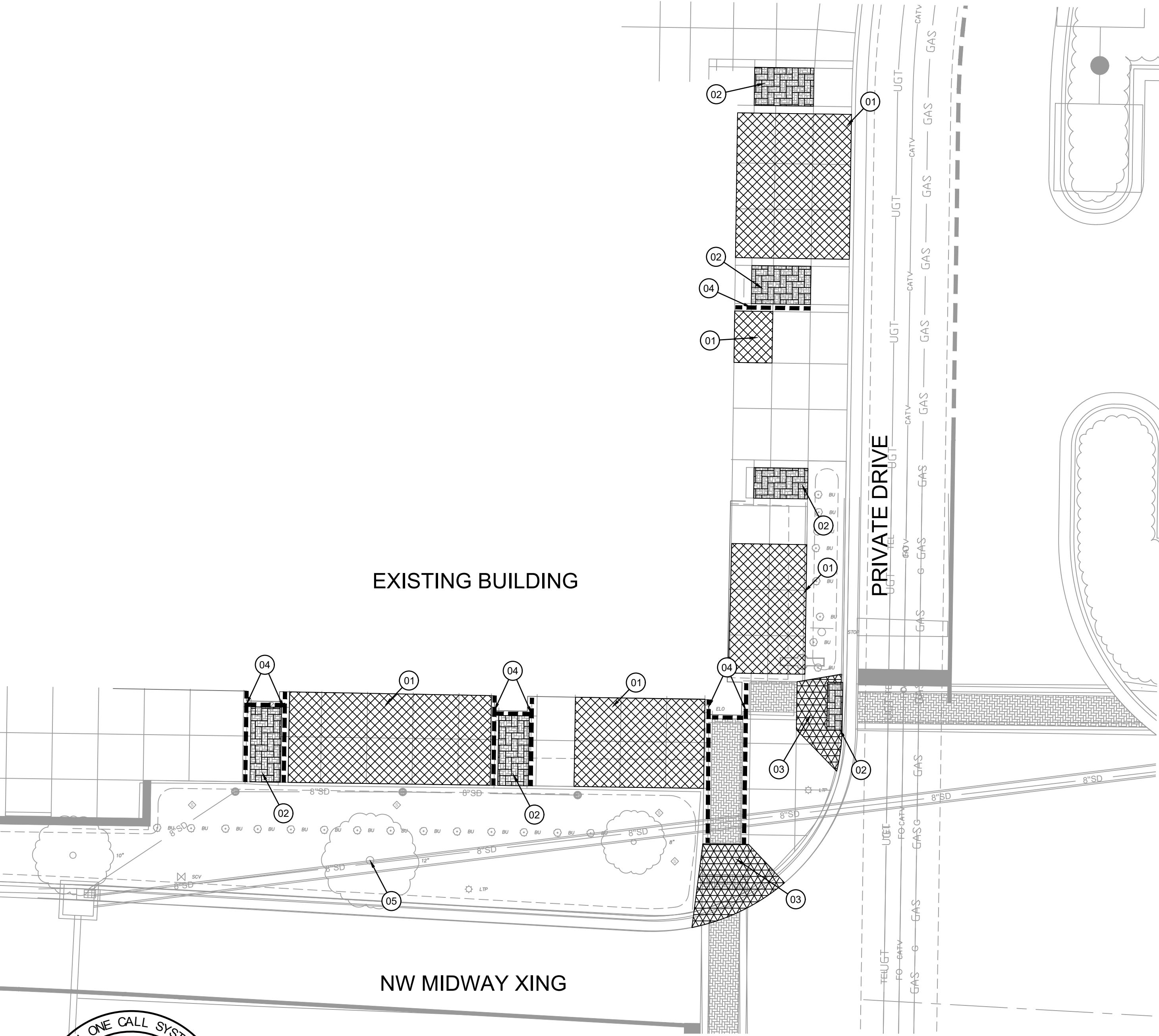


DEMOLITION PLAN NOTES

1. PRIOR TO ANY DEMOLITION EROSION CONTROL MEASURES AND CONSTRUCTION FENCING SHALL BE INSTALLED.
2. THE CONTRACTOR SHALL COORDINATE ALL ITEMS TO BE SALVAGED AND/OR PROTECTED WITH SITE OWNER AND UTILITY OWNERS.
3. THE CONTRACTOR SHALL NOT INTERRUPT ANY UTILITY SERVICES TO ANY ADJACENT PROPERTIES. SHOULD ANY INTERRUPTIONS BECOME NECESSARY, THE CONTRACTOR SHALL COORDINATE WITH THE ADJACENT PROPERTY AND UTILITY OWNER AND MINIMIZE THE LENGTH OF TIME THE UTILITY IS INTERRUPTED TO THE GREATEST EXTENT POSSIBLE.
4. SECONDARY WIRING, SERVICES, IRRIGATION AND OTHER MINOR SITE IMPROVEMENTS THAT ARE NOT TO REMAIN IN SERVICE ARE TO BE DEMOLISHED AND REMOVED.
5. ALL PAVEMENT SAWCUTS ARE TO BE MADE IN STRAIGHT, CLEAN LINES LEAVING A CLEAN AND STABLE EDGE AT FULL PAVEMENT DEPTH.
6. ALL PCC PAVEMENT AND ALL CURB SHALL BE REMOVED TO NEAREST JOINT.
7. ALL MATERIALS REMOVED FROM THE SITE SHALL BE DISPOSED OF IN STRICT CONFORMANCE WITH LOCAL CODES AND ORDINANCES.
8. ALL TREE REMOVAL SHALL INCLUDE STUMPS AND ROOTS. DEPRESSIONS CREATED SHALL BE FILLED TO PROVIDE DRAINAGE.

KEY NOTE LEGEND	
	1 REMOVE EXISTING CONCRETE
	2 REMOVE EXISTING PAVERS
	3 REMOVE EXISTING ADA CONCRETE CURB RAMP
	4 REMOVE EXISTING CONCRETE BANDS
	5 REMOVE EXISTING TREE



THE CONTRACTOR SHALL ADHERE TO THE PROVISIONS OF THE SENATE BILL NUMBER 583, 78TH GENERAL ASSEMBLY OF THE STATE OF MISSOURI. THE BILL REQUIRES THAT ANY PERSON OR FIRM DOING EXCAVATION ON PUBLIC RIGHT- OF-WAY DO SO ONLY AFTER GIVING NOTICE TO, & OBTAINING INFORMATION FROM, UTILITY COMPANIES. STATE LAW REQUIRES 48 HOURS ADVANCE NOTICE. CALL 1-800-DIG-RITE.

SITE PLAN NOTES

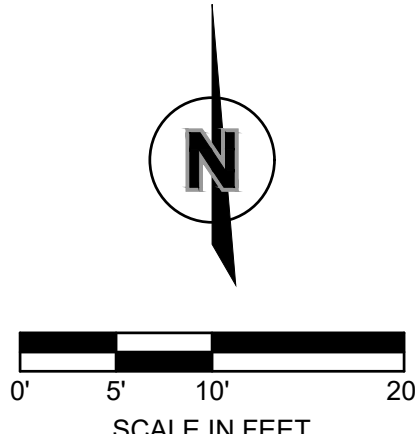
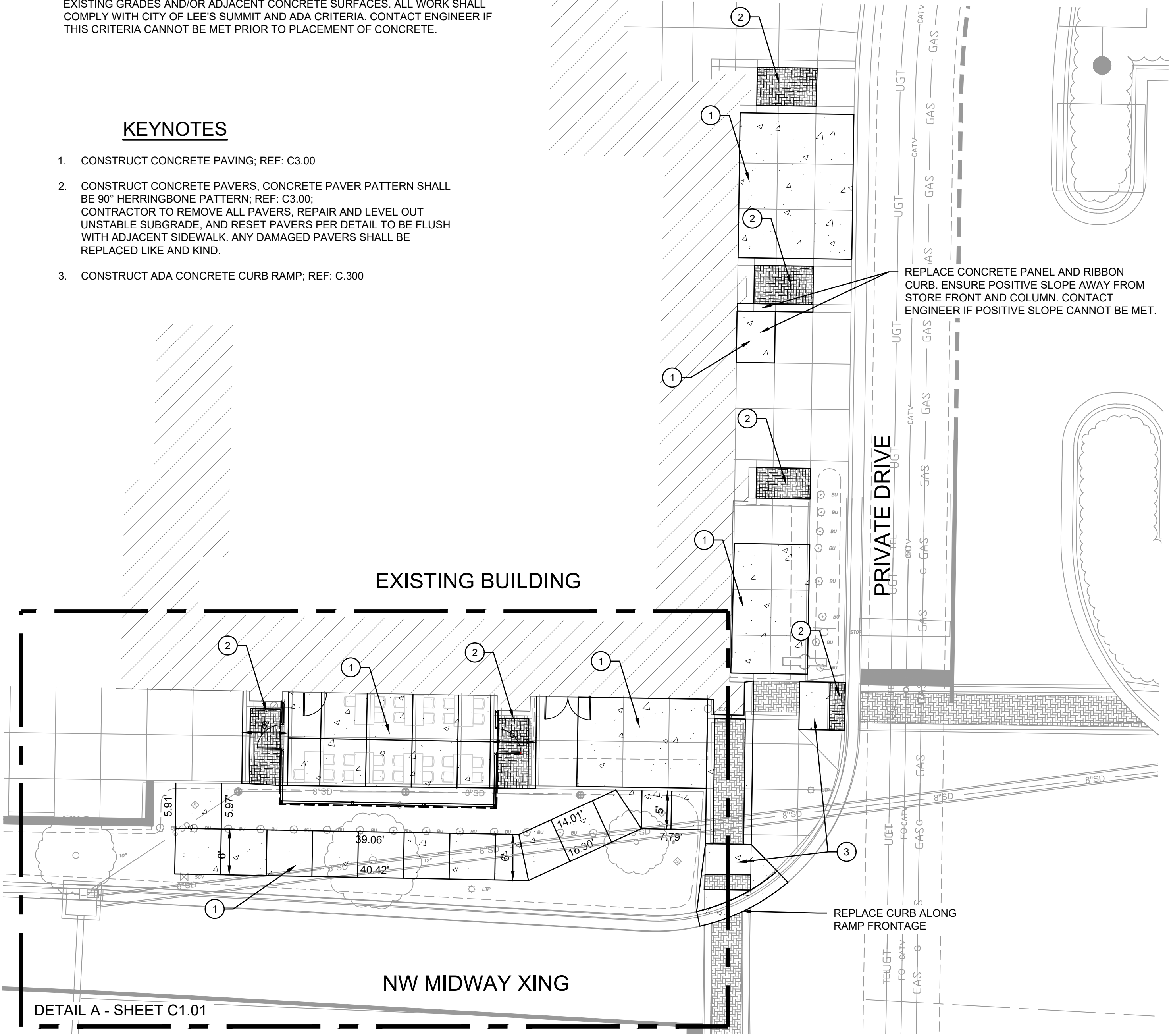
1. ALL PAVEMENT DIMENSIONS ARE TO BACK OF CURB, OR EDGE OF PAVEMENT WHERE NO CURB IS PRESENT, UNLESS OTHERWISE NOTED. DIMENSIONED TIES BETWEEN PROPERTY LINES AND BUILDING FACES OR PAVEMENT ARE AS INDICATED. THE CONTRACTOR IS RESPONSIBLE FOR MAKING ANY ADJUSTMENTS NECESSARY FOR FOUNDATIONS, BEDDING EXTENSIONS, SURCHARGING, ETC.
2. INSTALLED PAVEMENT SHALL MATCH EXISTING PAVEMENT IN GRADE AND ALIGNMENT TO PROVIDE SMOOTH SURFACE TRANSITIONS. INSTALLED CURB & GUTTER SHALL MATCH EXISTING CURB & GUTTER IN SIZE AND TYPE OR CONTRACTOR SHALL INCLUDE A TRANSITION FROM NEW TO EXISTING OF NO LESS THAN 5' AS MEASURED ALONG BACK OF CURB.
3. ALL CONSTRUCTION SHALL FOLLOW THE CITY OF LEE'S SUMMIT DESIGN AND CONSTRUCTION MANUAL AS ADOPTED BY ORDINANCE 5813. WHERE DISCREPANCIES EXIST BETWEEN THESE PLANS AND THE DESIGN AND CONSTRUCTION MANUAL, THE DESIGN AND CONSTRUCTION MANUAL SHALL PREVAIL.
4. THE CONTRACTOR SHALL CONTACT THE CITY'S DEVELOPMENT SERVICES ENGINEERING INSPECTION TO SCHEDULE A PRE-CONSTRUCTION MEETING WITH A FIELD ENGINEER INSPECTOR PRIOR TO ANY LAND DISTURBANCE WORK AT (816) 969-1200.
5. UNLESS OTHERWISE NOTED ON THE GRADING PLAN WITH SPECIFIC GRADES, CONTRACTOR SHALL REPLACE BACK CONCRETE SIDEWALK AND RAMPS TO MATCH EXISTING GRADES AND/OR ADJACENT CONCRETE SURFACES. ALL WORK SHALL COMPLY WITH CITY OF LEE'S SUMMIT AND ADA CRITERIA. CONTACT ENGINEER IF THIS CRITERIA CANNOT BE MET PRIOR TO PLACEMENT OF CONCRETE.

KEYNOTES

1. CONSTRUCT CONCRETE PAVING; REF: C3.00
2. CONSTRUCT CONCRETE PAVERS, CONCRETE PAVER PATTERN SHALL BE 90° HERRINGBONE PATTERN; REF: C3.00; CONTRACTOR TO REMOVE ALL PAVERS, REPAIR AND LEVEL OUT UNSTABLE SUBGRADE, AND RESET PAVERS PER DETAIL TO BE FLUSH WITH ADJACENT SIDEWALK. ANY DAMAGED PAVERS SHALL BE REPLACED LIKE AND KIND.
3. CONSTRUCT ADA CONCRETE CURB RAMP; REF: C.300

LEGEND

	CONCRETE SIDEWALK
	CONCRETE PAVERS
	PROPOSED PATIO FENCE
	EXISTING GAS LINE
	EXISTING UNDERGROUND TELECOMM
	EXISTING UNDERGROUND FIBER OPTICS
	EXISTING STORM SEWER



7301 West 133rd Street  
Suite 200  
Overland Park, KS 66213  
olsson.com  
TEL 913.381.1170  
FAX 913.381.1174  
Olsson - Engineering  
Missouri COA #001592

BY

DESCRIPTION

DATE

REV. NO.

2025

REVISIONS

DEMOLITION & SITE PLAN  
PATIO IMPROVEMENTS

ANCHO & AGAVE  
860-A NW BLUE PARKWAY

LEE'S SUMMIT, MO

drawn by: JMA  
designed by: JMA  
project no.: 025-01325  
date: 05.15.2025

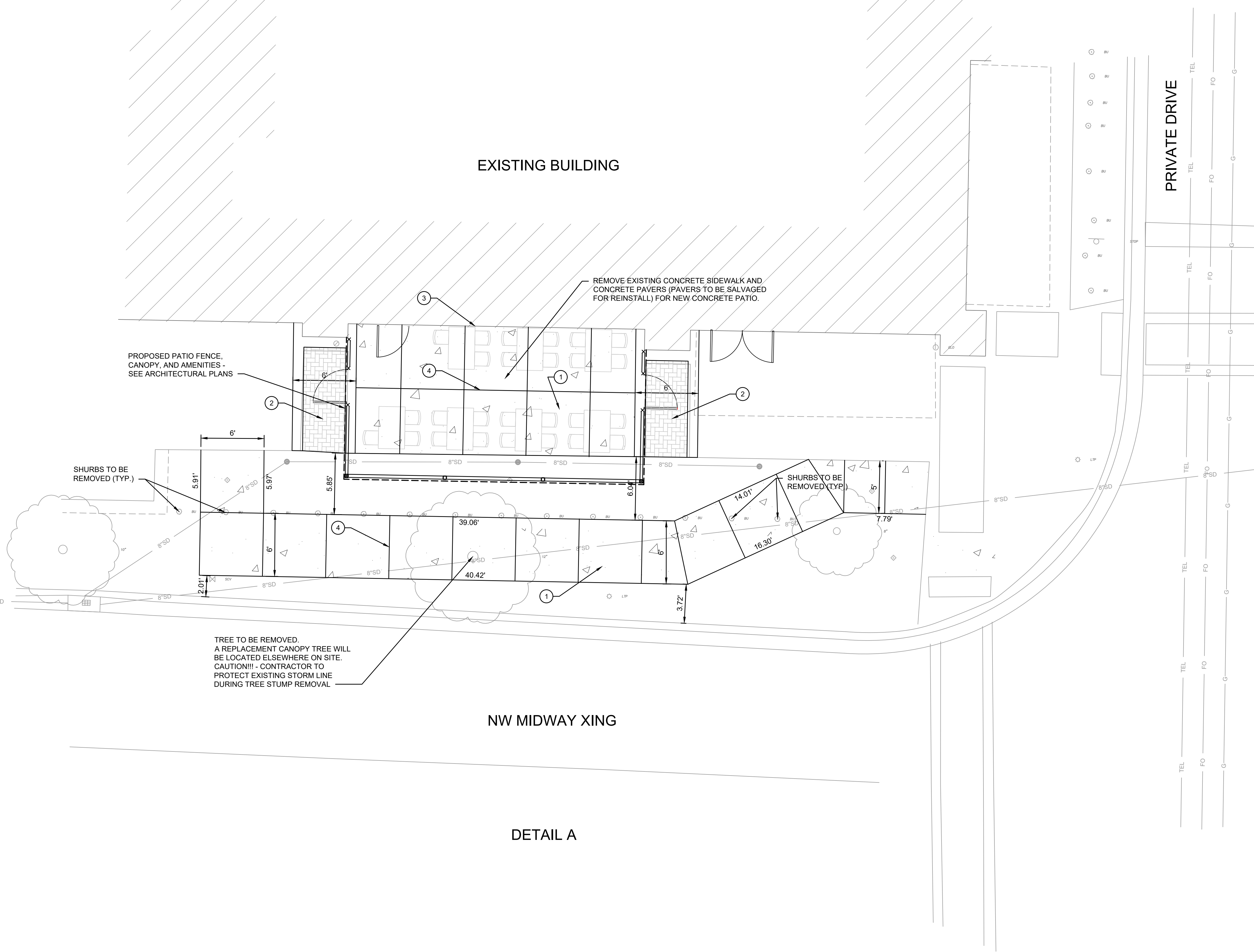
SHEET  
C1.00



F:\2025\01001-01500\025-01325\40-design\AutoCAD\final plans\Sheets\SDNC\_SIT01\_02501325.dwg  
DATE: May 15, 2025 4:08pm USER: jalm1aff



THE CONTRACTOR SHALL ADHERE TO THE PROVISIONS OF THE SENATE BILL NUMBER 583, 78TH GENERAL ASSEMBLY OF THE STATE OF MISSOURI. THE BILL REQUIRES THAT ANY PERSON OR FIRM DOING EXCAVATION ON PUBLIC RIGHT- OF-WAY DO SO ONLY AFTER GIVING NOTICE TO, & OBTAINING INFORMATION FROM, UTILITY COMPANIES. STATE LAW REQUIRES 48 HOURS ADVANCE NOTICE. CALL 1-800-DIG-RITE.



#### SITE PLAN NOTES

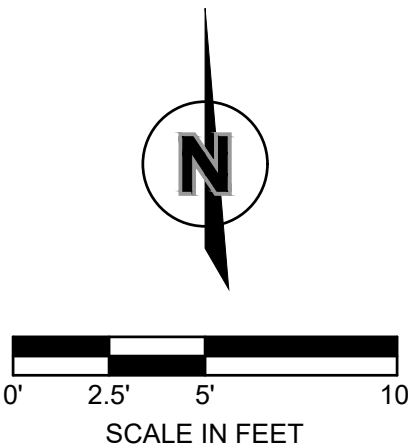
1. ALL PAVEMENT DIMENSIONS ARE TO BACK OF CURB, OR EDGE OF PAVEMENT WHERE NO CURB IS PRESENT, UNLESS OTHERWISE NOTED. DIMENSIONED TIES BETWEEN PROPERTY LINES AND BUILDING FACES OR PAVEMENT ARE AS INDICATED. THE CONTRACTOR IS RESPONSIBLE FOR MAKING ANY ADJUSTMENTS NECESSARY FOR FOUNDATIONS, BEDDING EXTENSIONS, SURCHARGING, ETC.
2. INSTALLED PAVEMENT SHALL MATCH EXISTING PAVEMENT IN GRADE AND ALIGNMENT TO PROVIDE SMOOTH SURFACE TRANSITIONS. INSTALLED CURB & GUTTER SHALL MATCH EXISTING CURB & GUTTER IN SIZE AND TYPE OR CONTRACTOR SHALL INCLUDE A TRANSITION FROM NEW TO EXISTING OF NO LESS THAN 5' AS MEASURED ALONG BACK OF CURB.
3. ALL CONSTRUCTION SHALL FOLLOW THE CITY OF LEE'S SUMMIT DESIGN AND CONSTRUCTION MANUAL AS ADOPTED BY ORDINANCE 5813. WHERE DISCREPANCIES EXIST BETWEEN THESE PLANS AND THE DESIGN AND CONSTRUCTION MANUAL, THE DESIGN AND CONSTRUCTION MANUAL SHALL PREVAIL.
4. THE CONTRACTOR SHALL CONTACT THE CITY'S DEVELOPMENT SERVICES ENGINEERING INSPECTION TO SCHEDULE A PRE-CONSTRUCTION MEETING WITH A FIELD ENGINEER INSPECTOR PRIOR TO ANY LAND DISTURBANCE WORK AT (816) 969-1200.
5. CONTRACTOR TO REMOVE ALL PAVERS, REPAIR AND LEVEL OUT UNSTABLE SUBGRADE, AND RESET PAVERS PER DETAIL TO BE FLUSH WITH ADJACENT SIDEWALK. ANY DAMAGED PAVERS SHALL BE REPLACED LIKE AND KIND.
6. UNLESS OTHERWISE NOTED ON THE GRADING PLAN WITH SPECIFIC GRADES, CONTRACTOR SHALL REPLACE BACK CONCRETE SIDEWALK AND RAMPS TO MATCH EXISTING GRADES AND/OR ADJACENT CONCRETE SURFACES. ALL WORK SHALL COMPLY WITH CITY OF LEE'S SUMMIT AND ADA CRITERIA. CONTACT ENGINEER IF THIS CRITERIA CANNOT BE MET PRIOR TO PLACEMENT OF CONCRETE.

#### LEGEND

- CONCRETE SIDEWALK
- CONCRETE PAVERS
- PROPOSED PATIO FENCE
- EXISTING GAS LINE
- EXISTING UNDERGROUND TELECOMM
- EXISTING UNDERGROUND FIBER OPTICS
- EXISTING STORM SEWER

#### KEYNOTES

1. CONSTRUCT CONCRETE PAVING; REF: C3.00
2. CONSTRUCT CONCRETE PAVERS, CONCRETE PAVES PATTERN SHALL BE 90° HERRINGBONE PATTERN; REF: C3.00
3. EXPANSION JOINT; REF: C3.00
4. CONTROL JOINT; REF: C3.00



olsson®

7301 West 133rd Street  
Suite 200  
Overland Park, KS 66213  
olsson.com  
TEL 913.381.1170  
FAX 913.381.1174  
Olsson - Engineering  
Missouri COA #001592

STATE OF MISSOURI  
FERRYMAN  
PARSONS  
NUMBER  
PE-2018010595  
1/15/2025  
PROFESSIONAL ENGINEER

BY

DESCRIPTION

DATE

REV. NO.

SITE PLAN  
PATIO IMPROVEMENTS

ANCHOR & AGAVE  
860-A NW BLUE PARKWAY

LEE'S SUMMIT, MO

drawn by: JMA  
designed by: JMA  
project no.: 025-01325  
date: 05.15.2025

SHEET  
C1.01

2025

REVISIONS





A north arrow pointing upwards, consisting of a circle with an 'N' inside and a vertical line with arrowheads at both ends. Below the north arrow is a scale bar labeled 'SCALE IN FEET' with markings at 0', 2.5', 5', and 10'.



