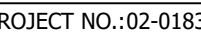




1. ALL PROPOSED WORK WITHIN PUBLIC RIGHT OF WAY SHALL BE CONSTRUCTED IN ACCORDANCE WITH CITY SPECIFICATIONS. REFER TO SHEETS 7-18 FOR CITY STANDARD DETAILS.
2. LEE'S SUMMIT'S CURRENT STANDARD SPECIFICATIONS AND STANDARD DETAILS CAN BE FOUND AT: <https://cityofsls.net/development-services/design/design-criteria/design-construction-manual-infrastructure>
3. ACCESSIBLE ROUTES SHALL BE CONSTRUCTED TO CONFORM TO THE *PUBLIC RIGHT-OF-WAY ACCESSIBILITY GUIDELINES* (PROWAG).
4. REGULATORY SIGNAGE SHALL BE INSTALLED TO CONFORM TO THE *MANUAL ON UNIFORM TRAFFIC CONTROL DEVICES* (MUTCD).
5. CROSS WALK AND STOP BAR STRIPING SHALL BE PERFORMED THERMOPLASTIC PER CITY SPECIFICATIONS.
6. CONTRACTOR TO PROVIDE FULL DEPTH SAWCUT ADJACENT TO ALL PAVEMENT/CURB & GUTTER REMOVAL. INSTALL ASPHALT TRANSITION STRIPS WHERE APPLICABLE.
7. EXISTING PAVEMENT MARKINGS TO BE REMOVED SHALL BE REMOVED PER CITY SPECIFICATIONS.
8. ALL DISTURBED AREAS ADJACENT TO PROPOSED IMPROVEMENTS SHALL BE RESTORED WITH SOD.



PO Box 860015  
Shawnee, KS 66286-0015  
P 913.248.9385

© COPYRIGHT QUIKTRIP CORPORATION  
ANY UNAUTHORIZED USE, REPRODUCTION,  
PUBLICATION, DISTRIBUTION, OR SALE IN  
WHOLE OR IN PART, IS STRICTLY FORBIDDEN

PROTOTYPE: P-120
DIVISION: 02
VERSION: 001
DESIGNED BY: CSH
DRAWN BY: CSH
REVIEWED BY: TRW

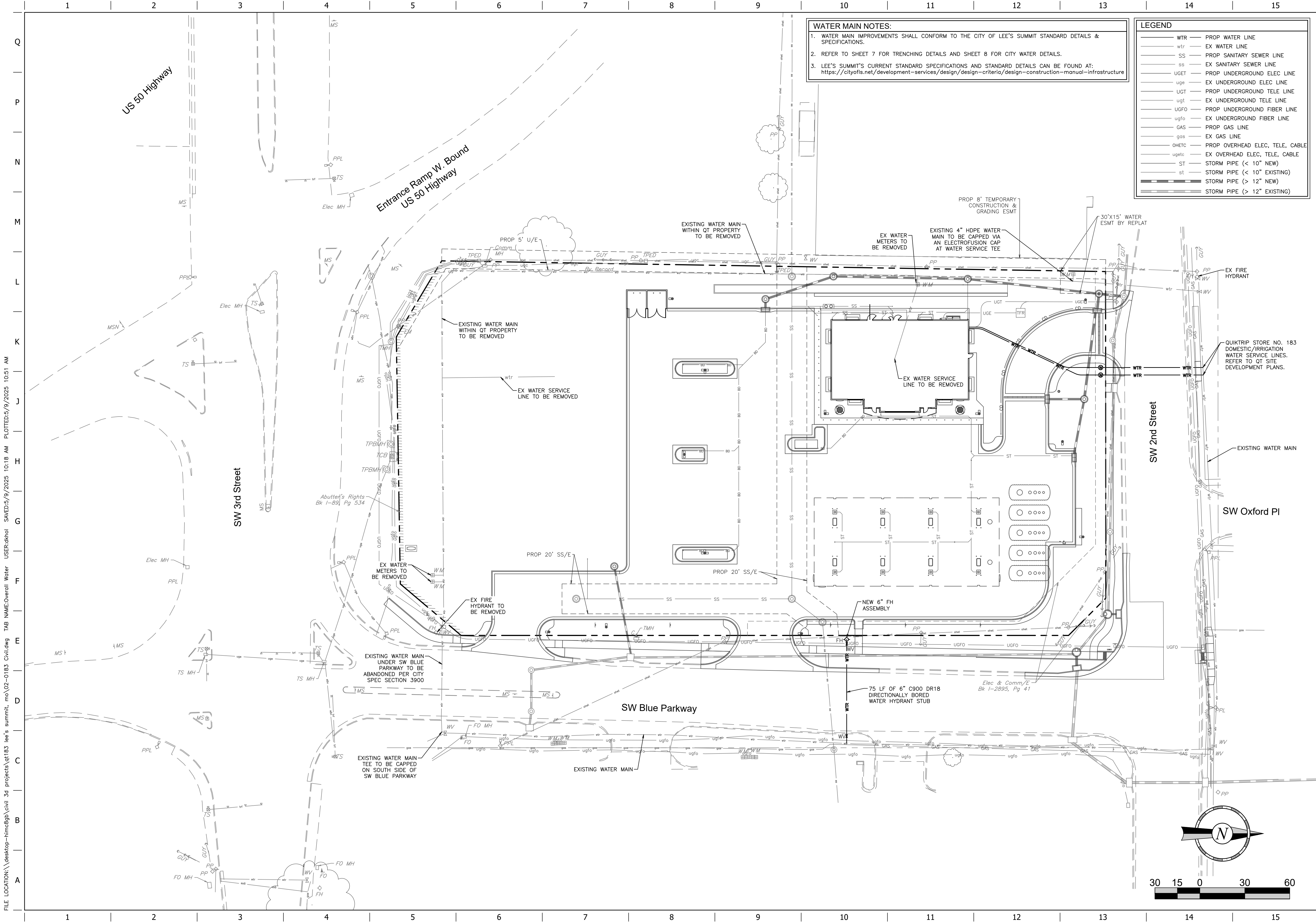
[illegible]

SHEET TITLE:

INTERSECTION  
IMPROVEMENT PLAN

SHEET NUMBER:

2



**WATER MAIN NOTES:**

1. WATER MAIN IMPROVEMENTS SHALL CONFORM TO THE CITY OF LEE'S SUMMIT STANDARD DETAILS & SPECIFICATIONS.

2. REFER TO SHEET 7 FOR TRENCHING DETAILS AND SHEET 8 FOR CITY WATER DETAILS.

3. LEE'S SUMMIT'S CURRENT STANDARD SPECIFICATIONS AND STANDARD DETAILS CAN BE FOUND AT: <https://cityoflis.net/development-services/design/design-criteria/design-construction-manual-infrastructure>

LEGEND	
WTR	PROP WATER LINE
wtr	EX WATER LINE
SS	PROP SANITARY SEWER LINE
ss	EX SANITARY SEWER LINE
UGET	PROP UNDERGROUND ELEC LINE
uge	EX UNDERGROUND ELEC LINE
UGT	PROP UNDERGROUND TELE LINE
ugt	EX UNDERGROUND TELE LINE
UGFO	PROP UNDERGROUND FIBER LINE
ugfo	EX UNDERGROUND FIBER LINE
GAS	PROP GAS LINE
gas	EX GAS LINE
OHETC	PROP OVERHEAD ELEC, TELE, CABLE
ugetc	EX OVERHEAD ELEC, TELE, CABLE
ST	STORM PIPE (< 10" NEW)
st	STORM PIPE (< 10" EXISTING)
	STORM PIPE (> 12" NEW)
	STORM PIPE (> 12" EXISTING)

PROJECT NO.:02-0183

**MDG**  
Midwest Design Group  
Kansas City

PO Box 860015  
Shawnee, KS 66286-0015  
P 913.248.9385

PUBLIC IMPROVEMENT PLANS  
IN ASSOCIATION WITH

**QuikTrip No. 0183R**

1001 SW BLUE PARKWAY  
LEE'S SUMMIT, JACKSON CO., MO 64063

© 2011 QUIKTRIP CORPORATION  
ALL RIGHTS RESERVED. REPRODUCTION,  
PUBLICATION, DISTRIBUTION, OR SALE IN  
WHOLE OR IN PART, IS STRICTLY FORBIDDEN.

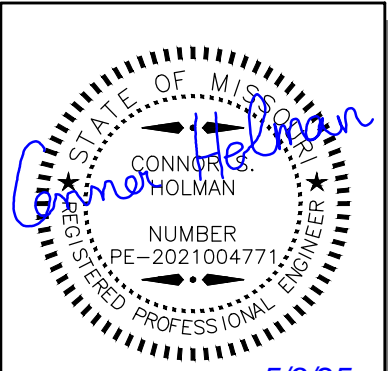
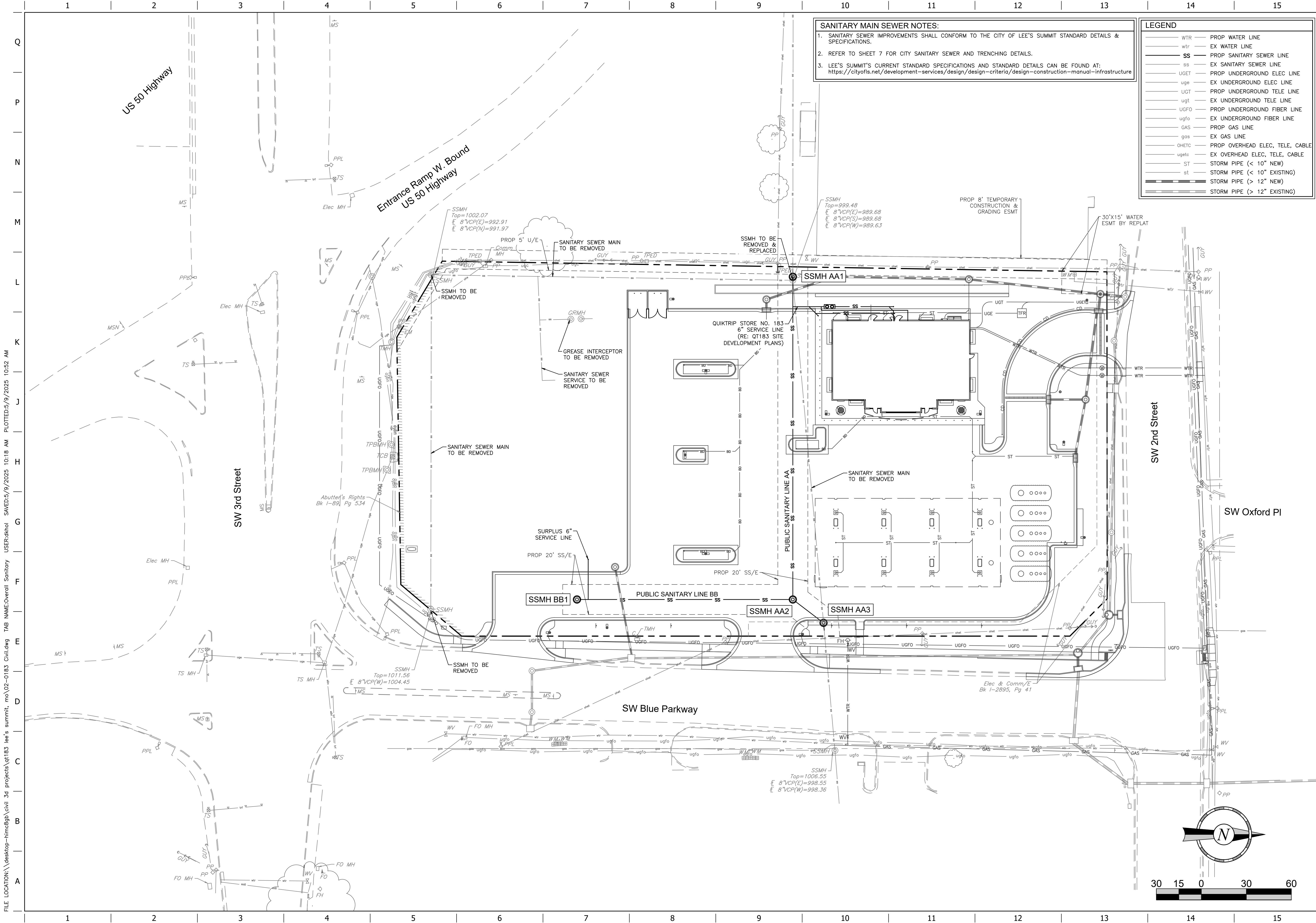
PROTOTYPE:	P-120
DIVISION:	02
VERSION:	001
DESIGNED BY:	CSH
DRAWN BY:	CSH
REVIEWED BY:	TRW

REV	DATE	DESCRIPTION

ORIGINAL ISSUE DATE: 05/09/2025

SHEET TITLE:  
WATER MAIN  
MODIFICATION PLAN

SHEET NUMBER:  
**3**



PROJECT NO.: 02-0183

**MDG**

Midwest Design Group  
Kansas City

PO Box 860015  
Shawnee, KS 66286-0015  
P 913.248.9385

PUBLIC IMPROVEMENT PLANS  
IN ASSOCIATION WITH

**QuikTrip No. 0183R**

1001 SW BLUE PARKWAY  
LEE'S SUMMIT, JACKSON CO., MO 64063



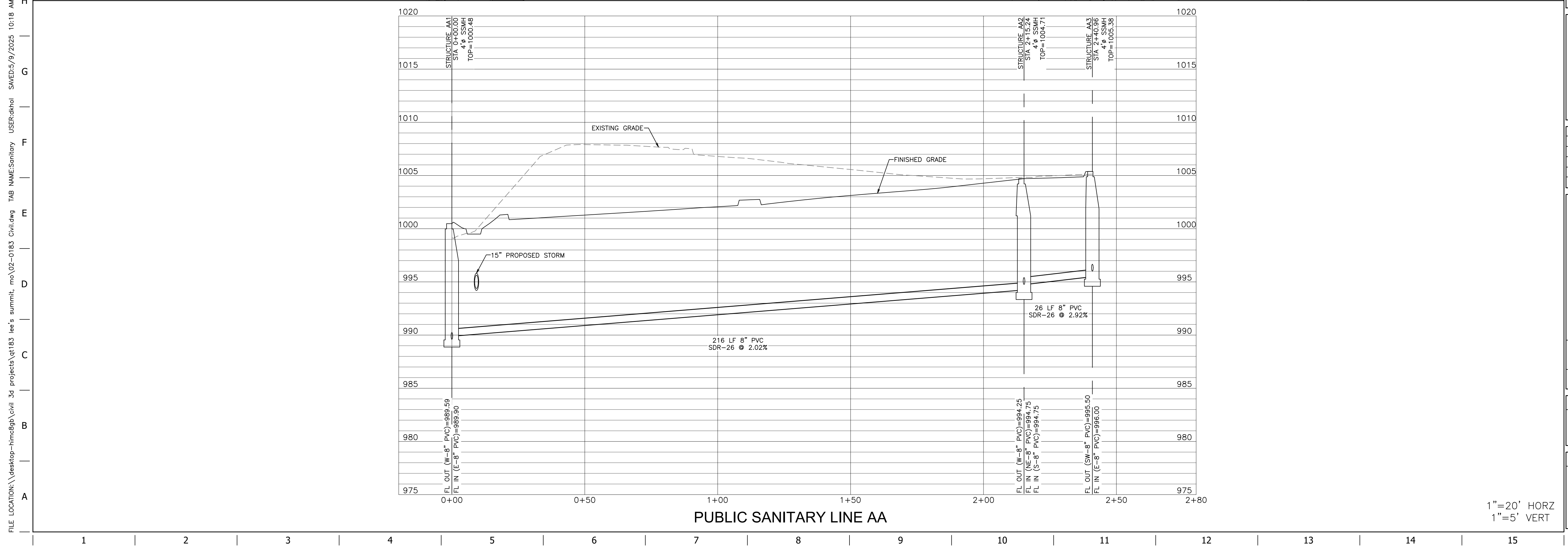
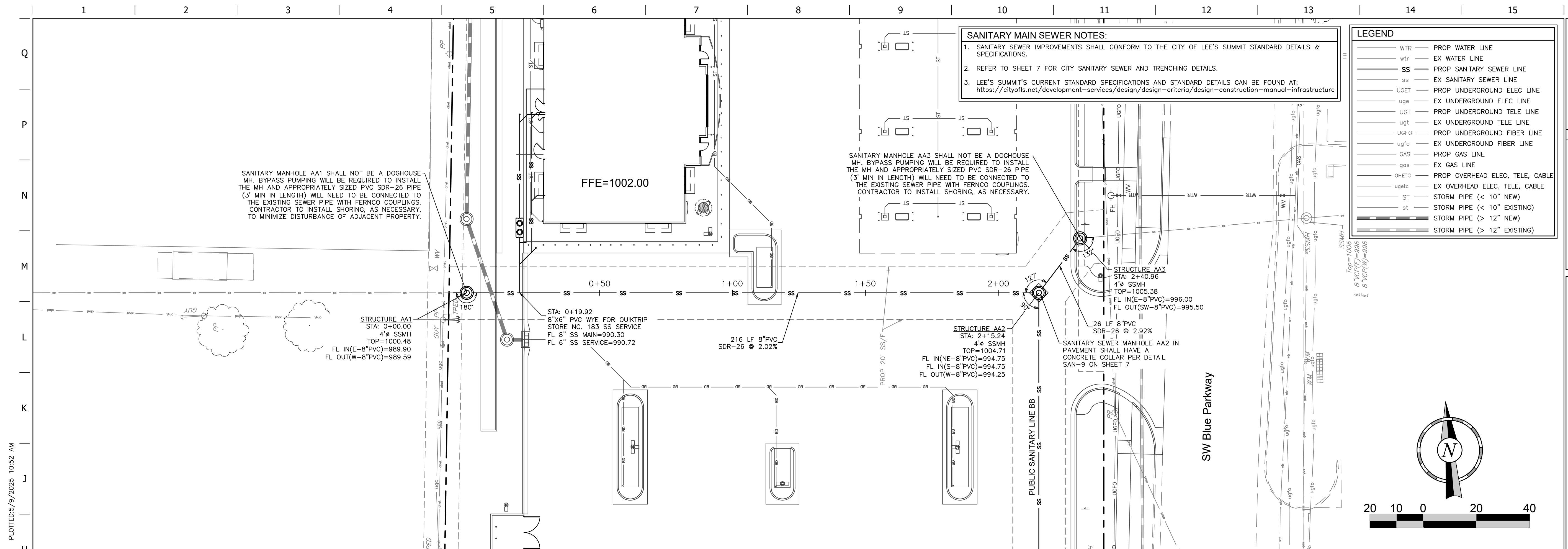
PROTOTYPE:	P-120
DIVISION:	02
VERSION:	001
DESIGNED BY:	CSH
DRAWN BY:	CSH
REVIEWED BY:	TRW

REV	DATE	DESCRIPTION

SHEET TITLE:  
SANITARY SEWER  
MODIFICATION PLAN

SHEET NUMBER:  
**4**

ORIGINAL ISSUE DATE: 05/09/2025



STATE OF MICHIGAN  
 CONNOR G. HOLMAN  
 NUMBER  
 PE-2021004771  
 REGISTERED PROFESSIONAL ENGINEER

PROJECT NO.:02-0183

**MDG**

Midwest Design Group  
Kansas City

PO Box 860015  
Shawnee, KS 66286-0015  
P 913.248.9385

PUBLIC IMPROVEMENT PLANS  
IN ASSOCIATION WITH  
**QuikTrip No. 0183R**  
1001 SW BLUE PARKWAY  
LEE'S SUMMIT, JACKSON CO., MO 64063

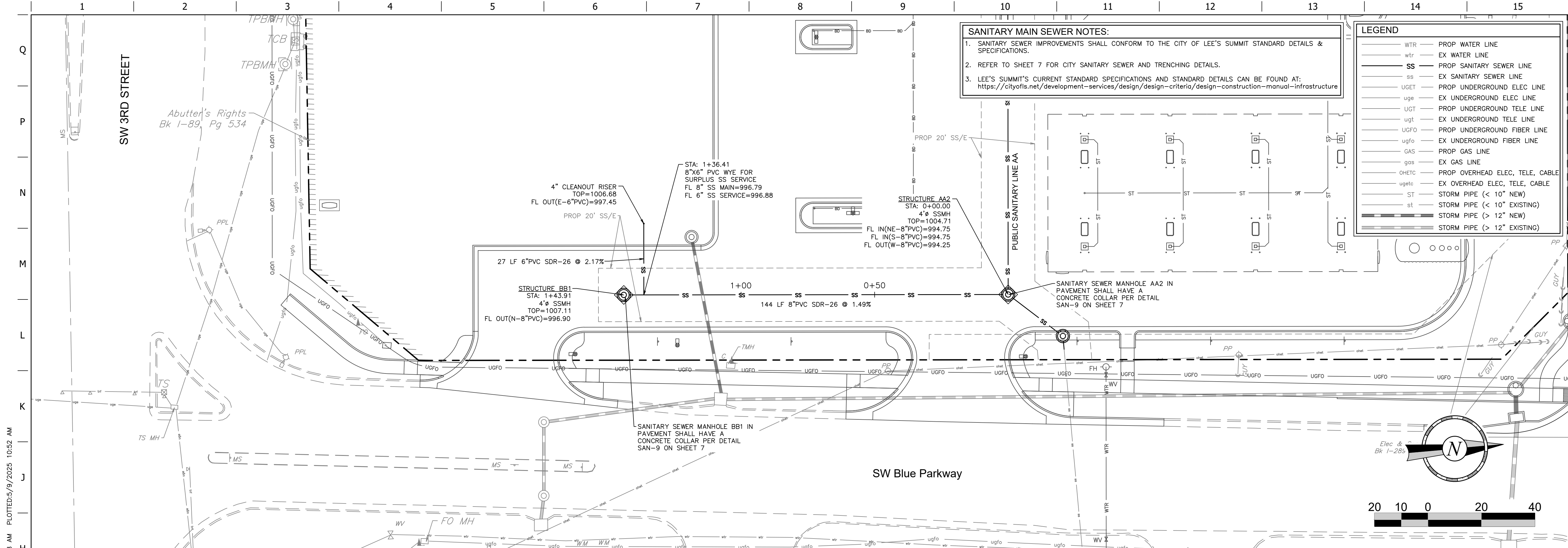


© COPYRIGHT QUICKTRIP CORPORATION 2011 ANY UNAUTHORIZED USE, REPRODUCTION, PUBLICATION, DISTRIBUTION, OR SALE IN WHOLE OR IN PART, IS STRICTLY FORBIDDEN.
PROTOTYPE: P-120
DIVISION: 02
VERSION: 001
DESIGNED BY: CSH
DRAWN BY: CSH
REVIEWED BY: TRW

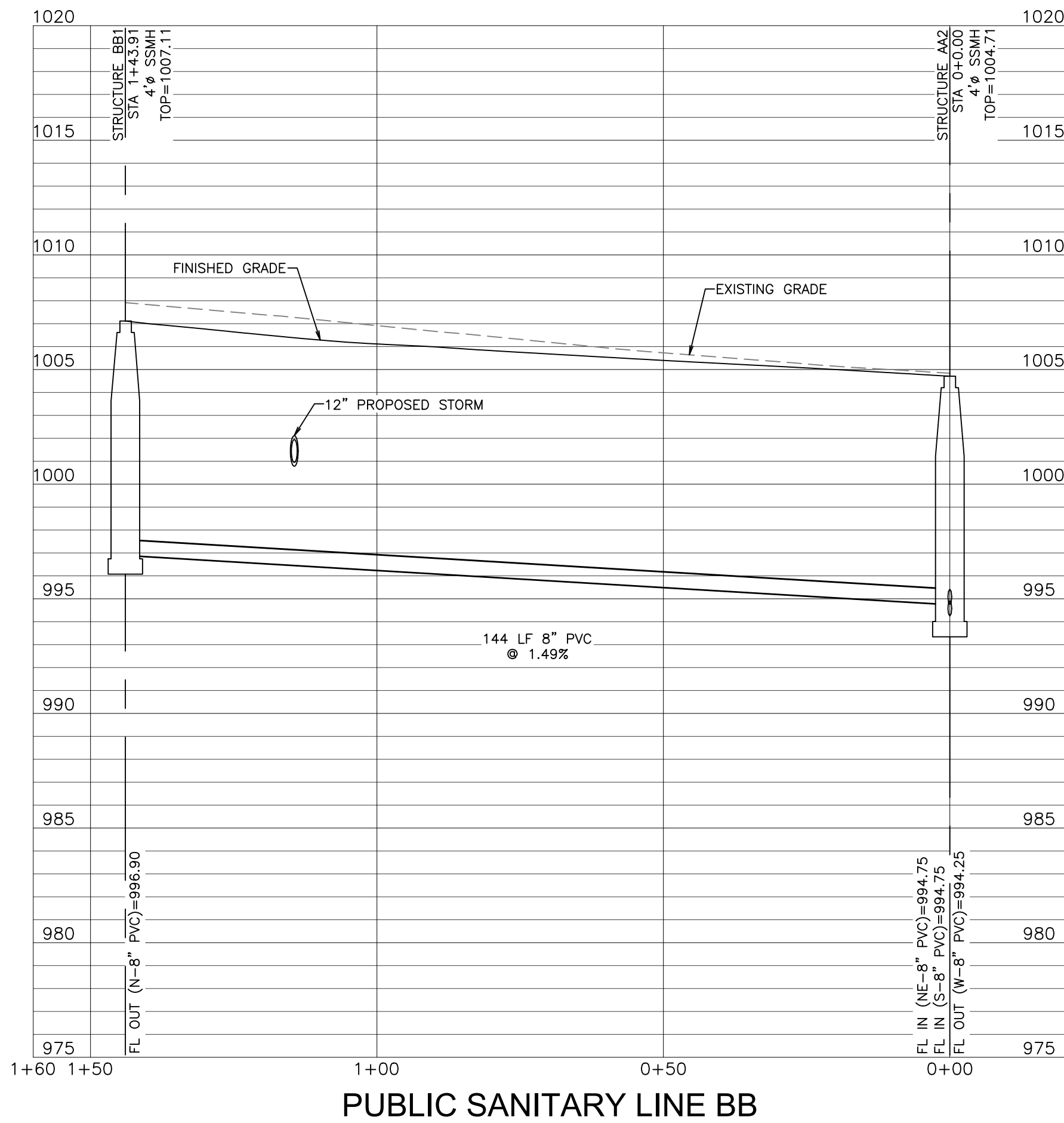
[illegible]

SHEET TITLE:
SANITARY MAIN AA PLAN & PROFILE

SHEET NUMBER:
5



FILE LOCATION: \\desktop-hmc2gpc\civil\_3d\_projects\qt183\_lee's summit\_mo\02-0183\_Civil.dwg TAB NAME:Sanitary (2) USER:skhol SAVED:5/9/2025 10:18 AM PLOTTED:5/9/2025 10:52 AM



1"=20' HORZ  
1"=5' VERT

PROJECT NO.:02-0183

5/9/25

Midwest Design Group  
Kansas City

PO Box 860015  
Shawnee, KS 66286-0015  
P 913.246.9385

PUBLIC IMPROVEMENT PLANS  
IN ASSOCIATION WITH

QuikTrip No. 0183R

1001 SW BLUE PARKWAY  
LEE'S SUMMIT, JACKSON CO., MO 64063

QT

© COPYRIGHT QUIKTRIP CORPORATION 2011  
ANY UNAUTHORIZED USE, REPRODUCTION,  
PUBLICATION, DISTRIBUTION, OR SALE IN  
WHOLE OR IN PART, IS STRICTLY FORBIDDEN.

PROTOTYPE: P-120  
DIVISION: 02  
VERSION: 001  
DESIGNED BY: CSH  
DRAWN BY: CSH  
REVIEWED BY: TRW

REV	DATE	DESCRIPTION

ORIGINAL ISSUE DATE: 05/09/2025

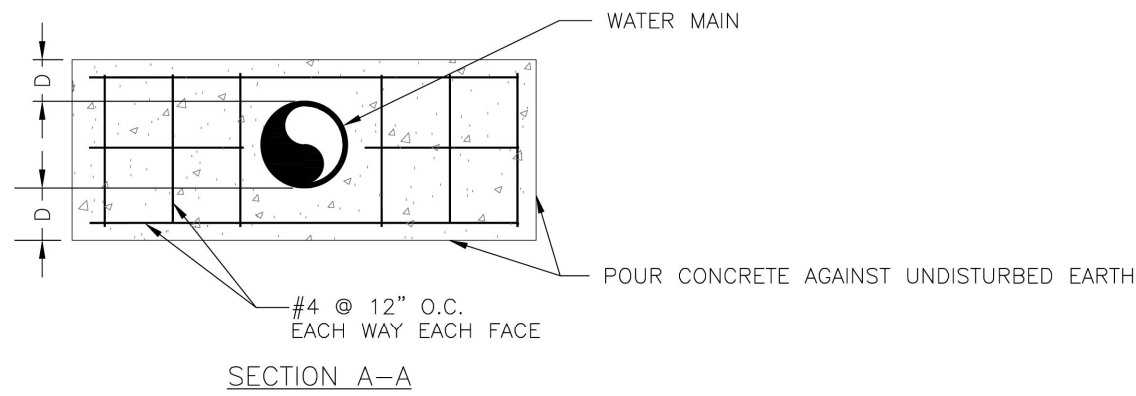
SHEET TITLE:  
SANITARY MAIN BB  
PLAN & PROFILE

SHEET NUMBER:  
6



- |   |   |
|---|---|
|  | <p><b>LEE'S SUMMIT</b><br/>MISSOURI</p> <p>PUBLIC WORKS ENGINEERING DIVISION   220 SE GREEN STREET   LEE'S SUMMIT, MO 64063</p> |
|   | <p><b>HORIZONTAL THRUST BLOCK</b></p>   |

- |                              |   |
|------------------------------|---|
| <b>LS</b>                    | <b>LEE'S SUMMIT</b><br><b>MISSOURI</b><br><small>PUBLIC WORKS ENGINEERING DIVISION   220 SE GREEN STREET   LEE'S SUMMIT, MO 64063</small> |
| <b>VERTICAL THRUST BLOCK</b> |   |





**LEE'S SUMMIT**

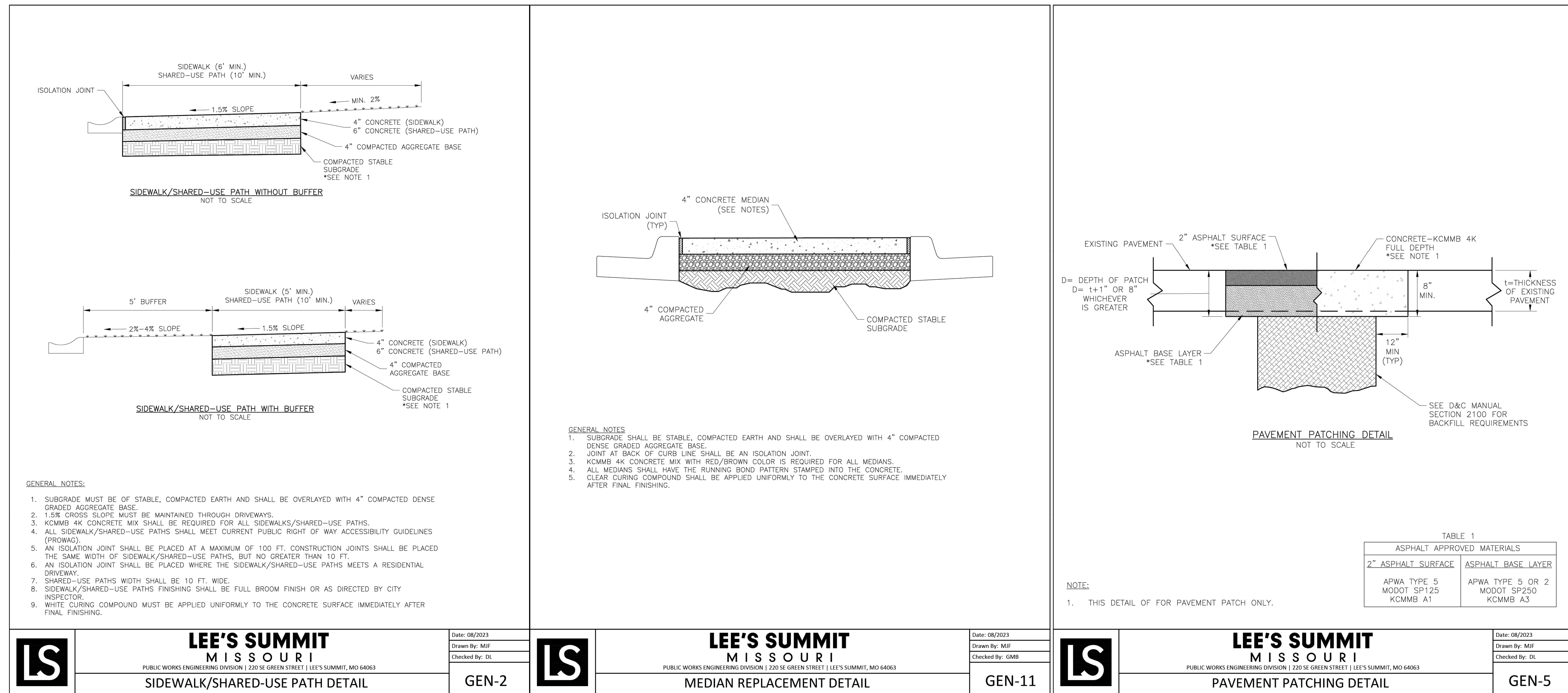
**MISSOURI**

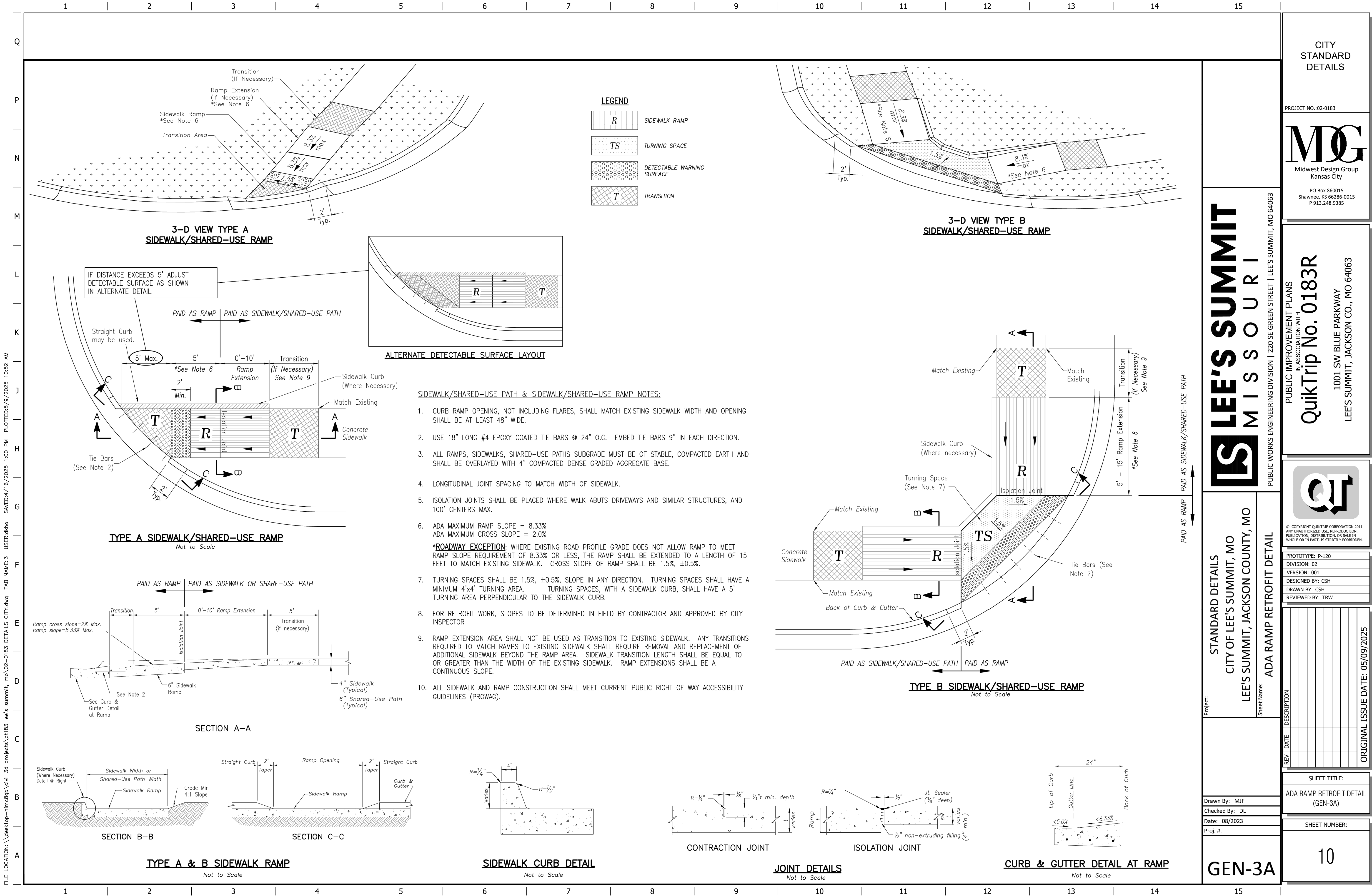
PUBLIC WORKS ENGINEERING DIVISION | 220 SE GREEN STREET | LEE'S SUMMIT, MO 64063

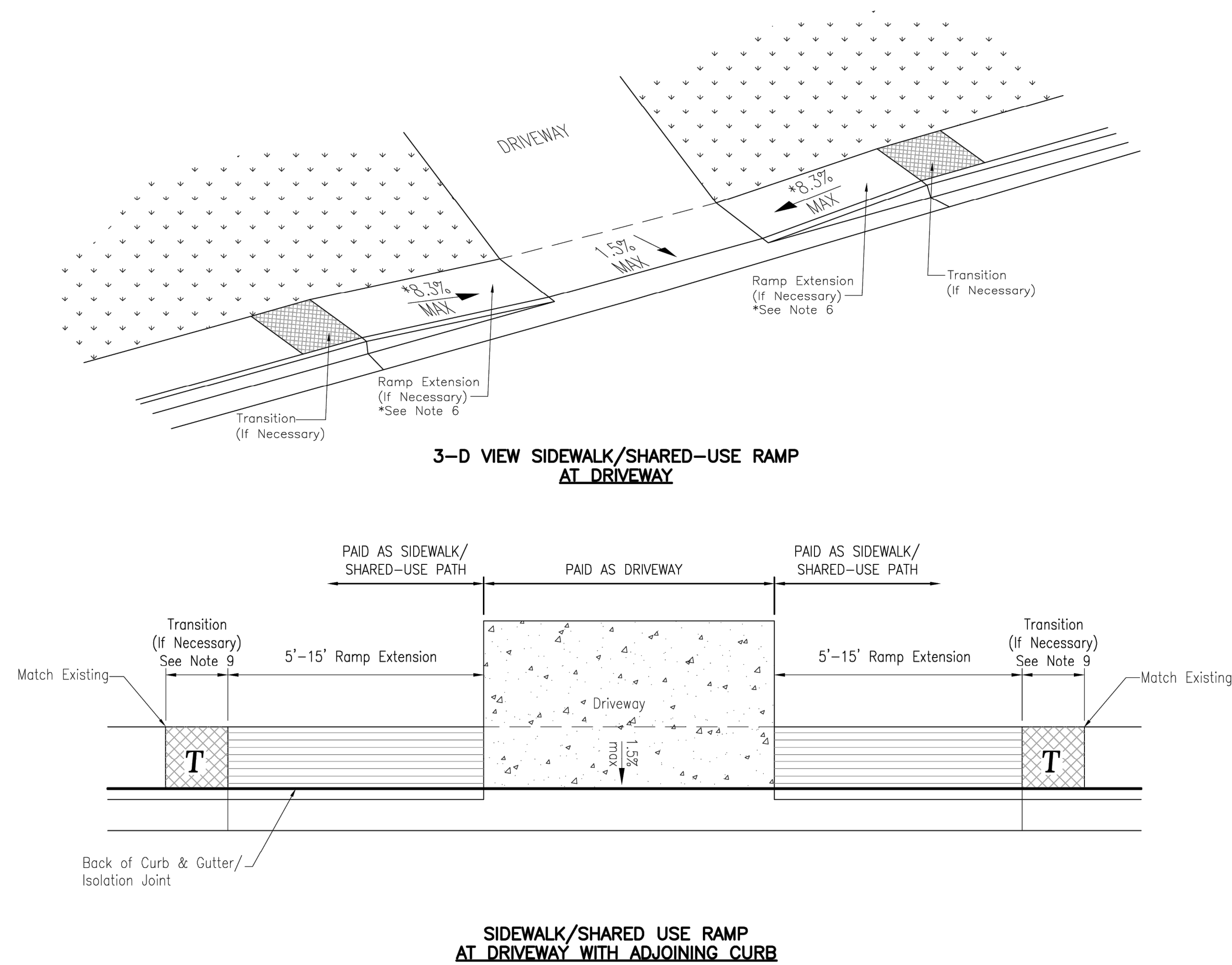
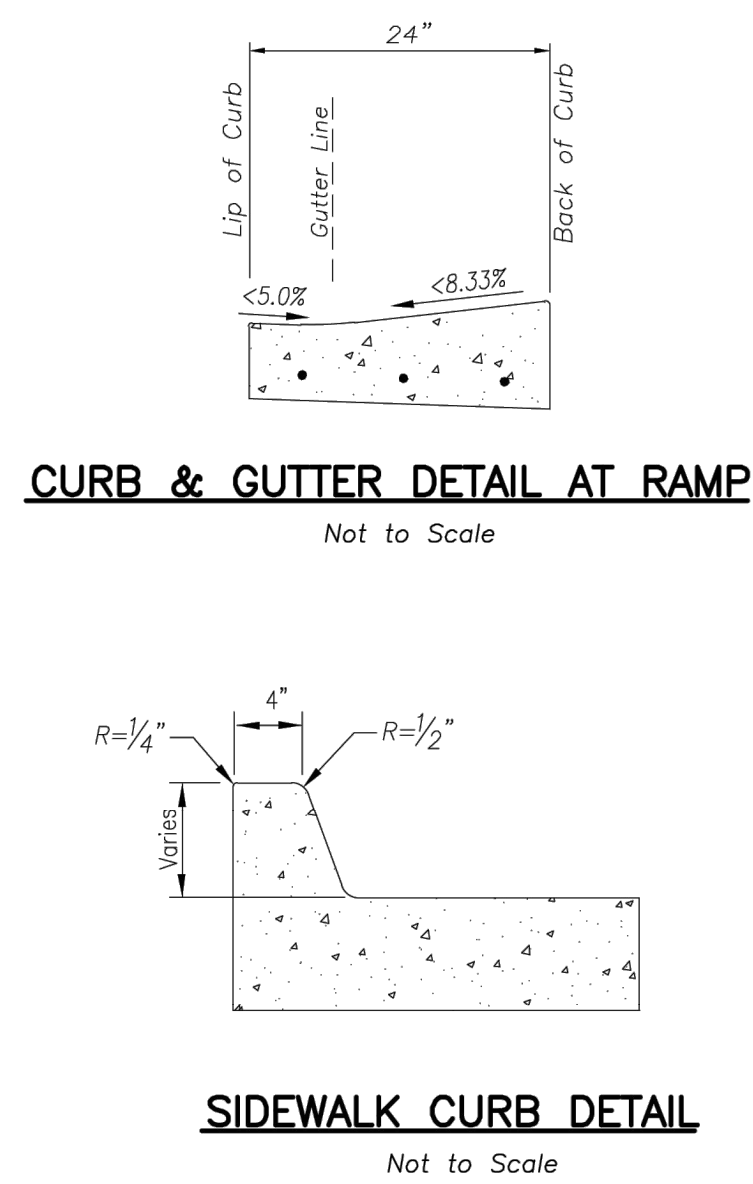
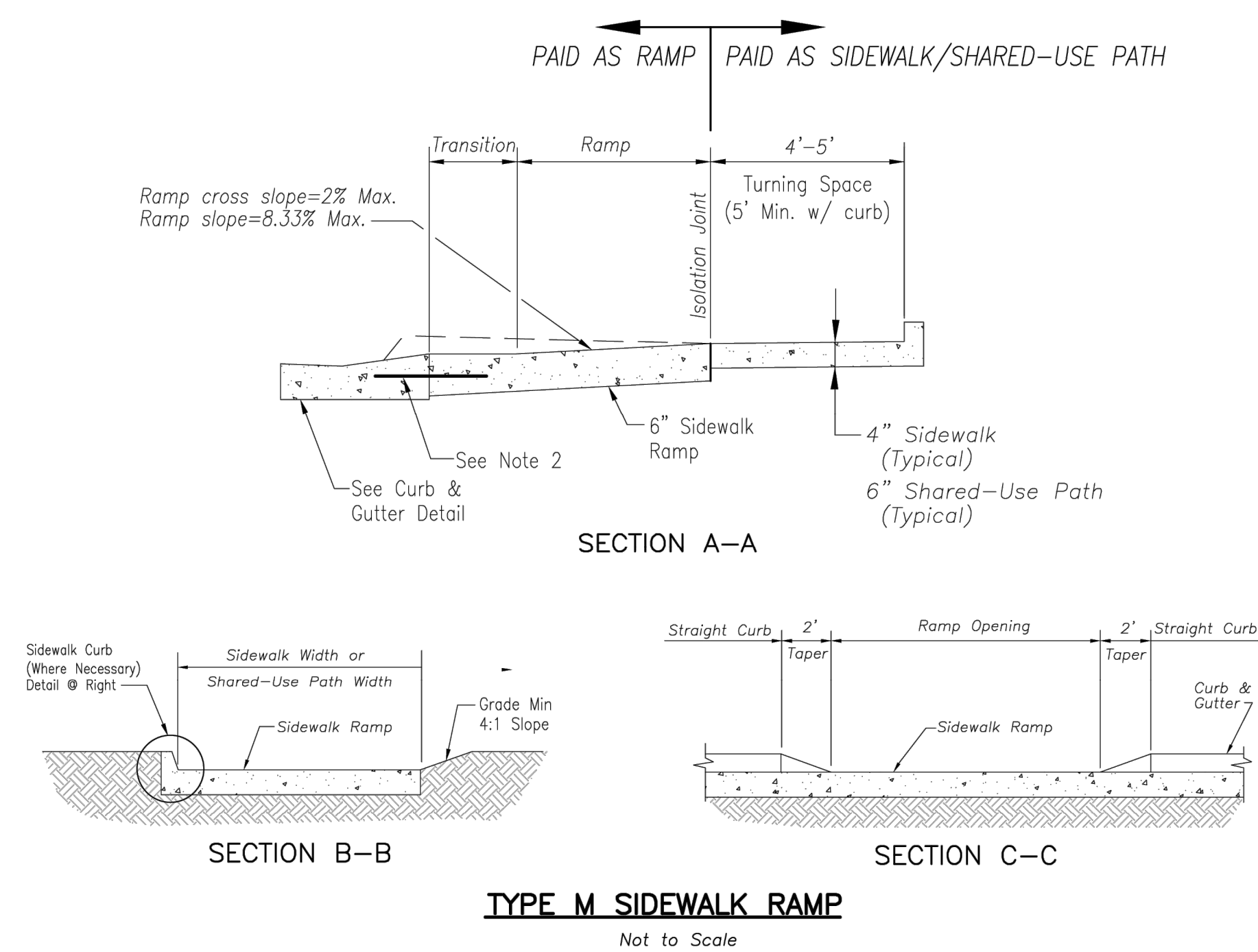
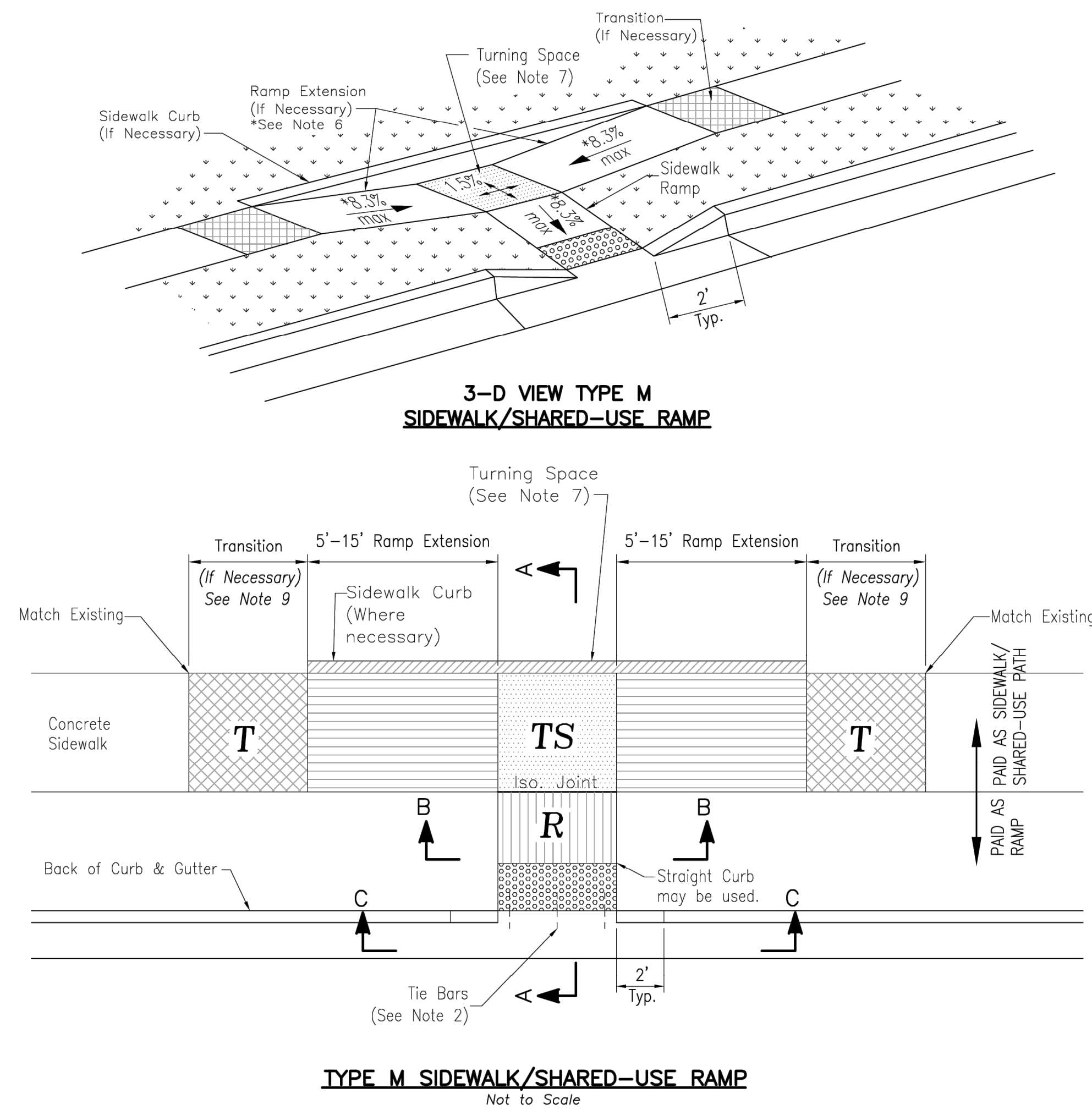
**STRADDLE BLOCK**



8







- SIDEWALK/SHARED—USE PATH & SIDEWALK/SHARED—USE RAMP NOTES:**
1. CURB RAMP OPENING, NOT INCLUDING FLARES, SHALL MATCH EXISTING SIDEWALK WIDTH AND OPENING SHALL BE AT LEAST 48" WIDE.
  2. USE 18" LONG #4 EPOXY COATED TIE BARS @ 24" O.C. EMBED TIE BARS 9" IN EACH DIRECTION.
  3. ALL RAMPS, SIDEWALKS, SHARED—USE PATHS SUBGRADE MUST BE OF STABLE, COMPACTED EARTH AND SHALL BE OVERLAYED WITH 4" COMPACTED DENSE GRADED AGGREGATE BASE.
  4. LONGITUDINAL JOINT SPACING TO MATCH WIDTH OF SIDEWALK.
  5. ISOLATION JOINTS SHALL BE PLACED WHERE WALK ABUTS DRIVEWAYS AND SIMILAR STRUCTURES, AND 100' CENTERS MAX.
  6. ADA MAXIMUM RAMP SLOPE = 8.33%  
ADA MAXIMUM CROSS SLOPE = 2.0%
- \*ROADWAY EXCEPTION:** WHERE EXISTING ROAD PROFILE GRADE DOES NOT ALLOW RAMP TO MEET RAMP SLOPE REQUIREMENT OF 8.33% OR LESS, THE RAMP SHALL BE EXTENDED TO A LENGTH OF 15 FEET TO MATCH EXISTING SIDEWALK. CROSS SLOPE OF RAMP SHALL BE 1.5%,  $\pm 0.5\%$ .
7. TURNING SPACES SHALL BE 1.5%,  $\pm 0.5\%$ , SLOPE IN ANY DIRECTION. TURNING SPACES SHALL HAVE A MINIMUM 4'x4' TURNING AREA. TURNING SPACES, WITH A SIDEWALK CURB, SHALL HAVE A 5' TURNING AREA PERPENDICULAR TO THE SIDEWALK CURB.
  8. FOR RETROFIT WORK, SLOPES TO BE DETERMINED IN FIELD BY CONTRACTOR AND APPROVED BY CITY INSPECTOR
  9. RAMP EXTENSION AREA SHALL NOT BE USED AS TRANSITION TO EXISTING SIDEWALK. ANY TRANSITIONS REQUIRED TO MATCH RAMPS TO EXISTING SIDEWALK SHALL REQUIRE REMOVAL AND REPLACEMENT OF ADDITIONAL SIDEWALK BEYOND THE RAMP AREA. SIDEWALK TRANSITION LENGTH SHALL BE EQUAL TO OR GREATER THAN THE WIDTH OF THE EXISTING SIDEWALK. RAMP EXTENSIONS SHALL BE A CONTINUOUS SLOPE.
  10. ALL SIDEWALK AND RAMP CONSTRUCTION SHALL MEET CURRENT PUBLIC RIGHT OF WAY ACCESSIBILITY GUIDELINES (PROWAG).

LS LEE'S SUMMIT  
MISSOURI

Project: STANDARD DETAILS  
CITY OF LEE'S SUMMIT, MO  
LEE'S SUMMIT, JACKSON COUNTY, MO

Drawn By: MJF
Checked By: DL
Date: 08/2023
Proj. #:

# GEN-3B

CITY  
STANDARD  
DETAILS

PROJECT NO.:02-0183

**MDG**  
Midwest Design Group  
Kansas City

PO Box 860015  
Shawnee, KS 66286-0015  
P 913.248.9385

PUBLIC IMPROVEMENT PLANS  
IN ASSOCIATION WITH  
**QuikTrip No. 0183R**  
1001 SW BLUE PARKWAY  
LEE'S SUMMIT, JACKSON CO., MO 64063



© COPYRIGHT QUIKTRIP CORPORATION 2011  
ANY UNAUTHORIZED USE, REPRODUCTION,  
PUBLICATION, DISTRIBUTION, OR SALE IN  
WHOLE OR IN PART, IS STRICTLY FORBIDDEN.

PROTOTYPE: P-120
DIVISION: 02
VERSION: 001
DESIGNED BY: CSH
DRAWN BY: CSH
REVIEWED BY: TRW

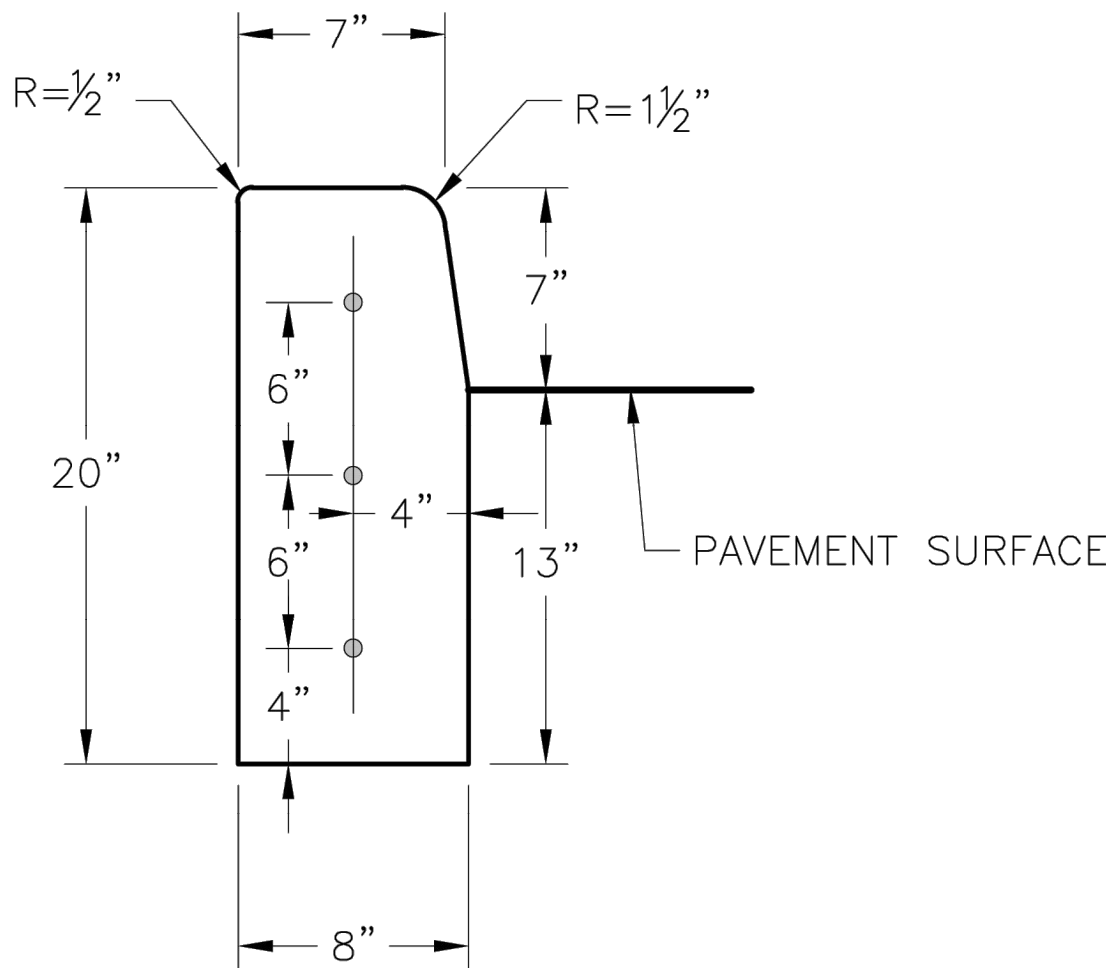
[illegible]

SHEET TITLE:
ADA RAMP RETROFIT DETAIL (GEN-3B)

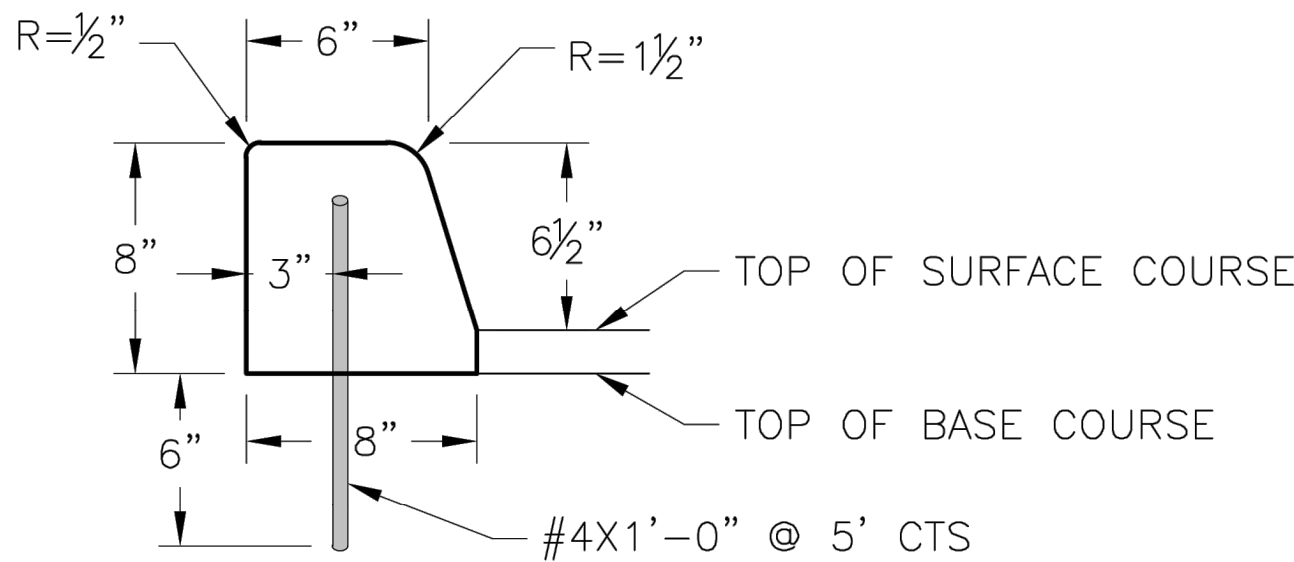
SHEET NUMBER:

11

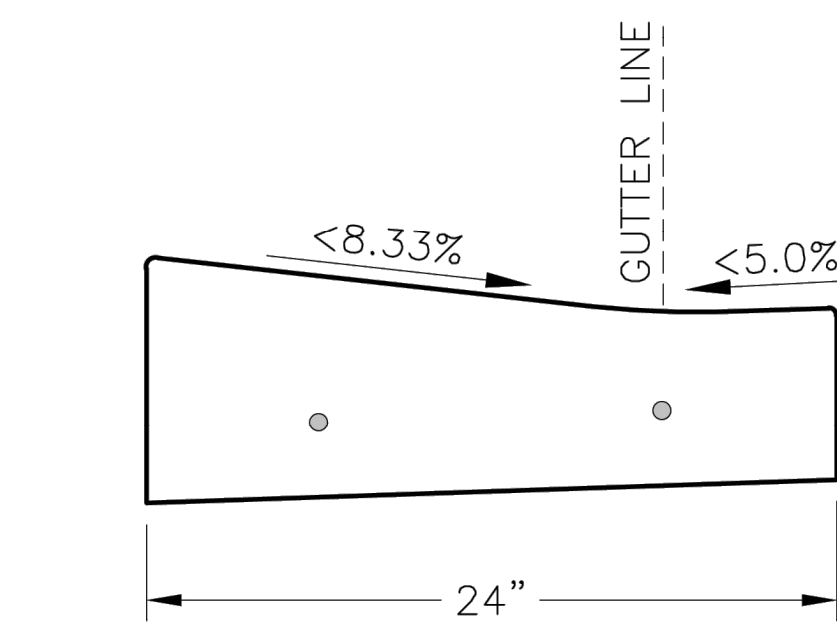
FILE LOCATION: \\desktop-him8gp\civil 3d projects-him8gp\lee's summit, mo\02-0183 DETAILS CITY.dwg TAB NAME:5 USER:rdhol SAVED:4/16/2025 1:00 PM PLOTTED:5/9/2025 10:53 AM



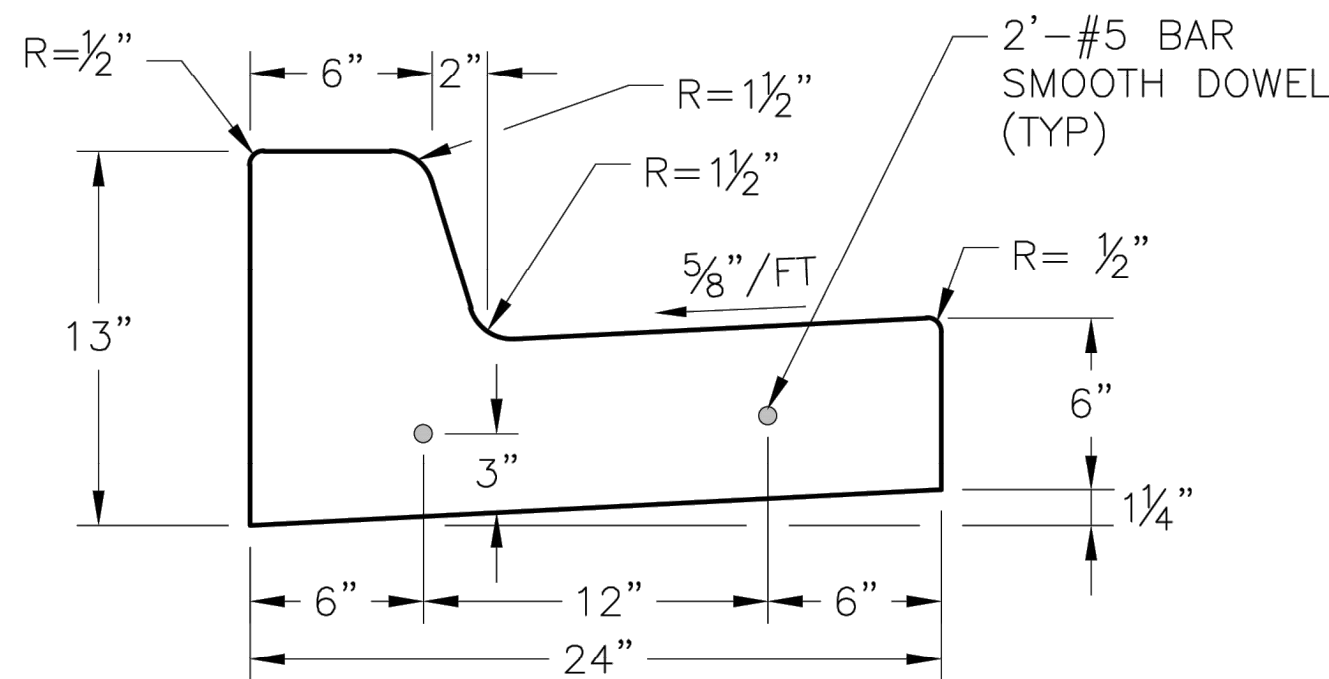
STRAIGHT CURB  
(TYPE C-1)



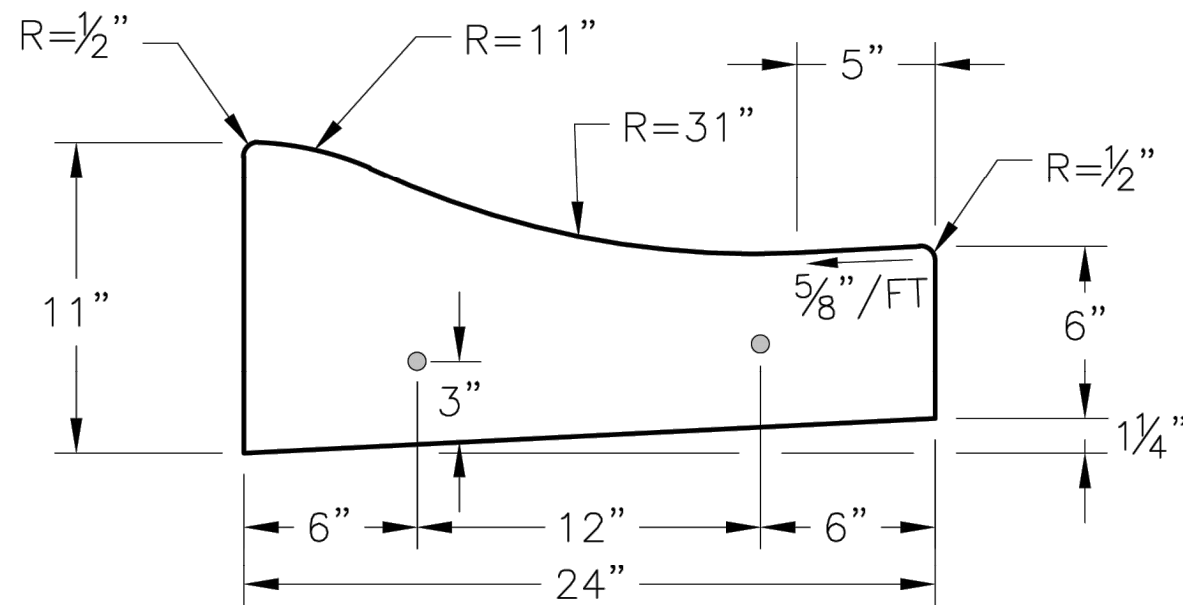
DOWELLED CURB  
(TYPE DC)



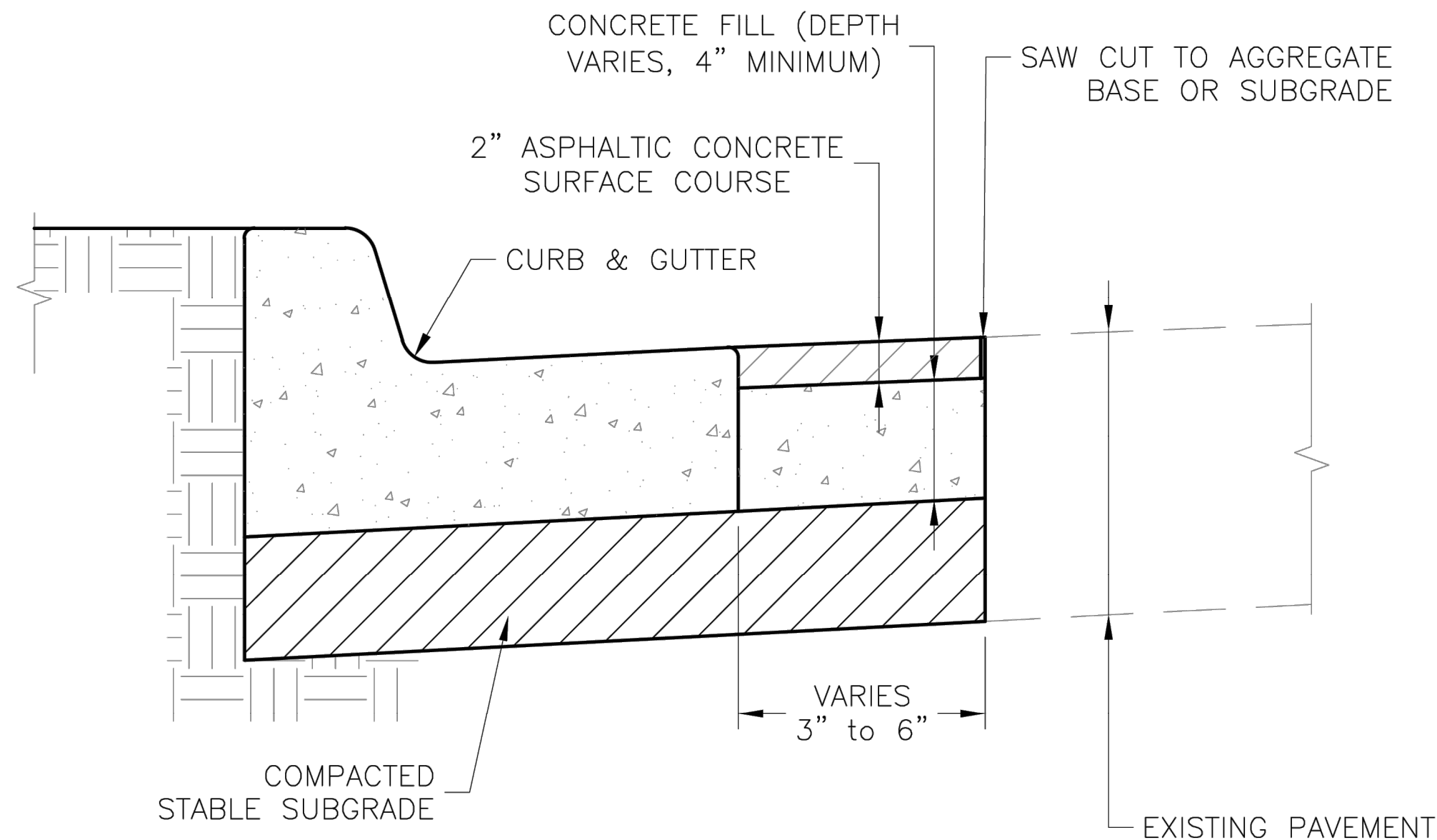
CURB & GUTTER DETAIL AT RAMP  
(ADA SLOPE REQUIREMENTS)



STRAIGHT BACK CURB &  
GUTTER  
(TYPE CG-1)



ROLL BACK CURB &  
GUTTER  
(TYPE CG-2)



CURB REPLACEMENT DETAIL

GENERAL NOTES

- 3/4" ISOLATION JOINTS WITH 2 (2'-#5 BAR) SMOOTH DOWELS SHALL BE PLACED AT RADIUS POINTS AND AT 150' INTERVALS. THESE DOWEL BARS SHALL BE GREASED AND WRAPPED ON ONE END WITH EXPANSION TUBES.
- 3" DEEP CONTRACTION JOINTS SHALL BE INSTALLED AT APPROXIMATELY 10' INTERVALS. THESE JOINTS SHALL PASS ACROSS THE ENTIRE CURB SECTION.
- CONCRETE FILL SHALL HAVE UNIFORM AND SMOOTH FINISH
- KCMMB 4K CONCRETE SHALL BE USED FOR ALL CURB.
- ASPHALTIC CONCRETE SURFACE COURSE SHALL CONFORM TO STANDARD SPECIFICATIONS SECTION 2205.2.
- CURBS FOR NEW STREETS SHALL BE BUILT ON ASPHALT OR AGGREGATE BASE AS SHOWN IN TYPICAL SECTION DETAIL.
- WHITE CURING COMPOUND MUST BE APPLIED UNIFORMLY TO THE CONCRETE SURFACE IMMEDIATELY AFTER FINAL FINISHING.
- ALL DOWELS & TIE BARS SHALL BE EPOXY COATED.

LEE'S SUMMIT  
MISSOURI

STANDARD DETAILS  
CITY OF LEE'S SUMMIT, MO  
LEE'S SUMMIT, JACKSON COUNTY, MO

Drawn By: MIF  
Checked By: DL  
Date: 08/2023  
Proj. #:

GEN-4

CITY  
STANDARD  
DETAILS

PROJECT NO.:02-0183

Midwest Design Group  
Kansas City

PO Box 860015  
Shawnee, KS 66286-0015  
P 913.248.9385

PUBLIC IMPROVEMENT PLANS  
IN ASSOCIATION WITH  
QuikTrip No. 0183R  
1001 SW BLUE PARKWAY  
LEE'S SUMMIT, JACKSON CO., MO 64063

QT

© COPYRIGHT QUIKTRIP CORPORATION 2011  
ANY UNAUTHORIZED USE, REPRODUCTION,  
PUBLICATION, DISTRIBUTION, OR SALE IN  
WHOLE OR IN PART, IS STRICTLY FORBIDDEN.

PROTOTYPE: P-120  
DIVISION: 02  
VERSION: 001  
DESIGNED BY: CSH  
DRAWN BY: CSH  
REVIEWED BY: TRW

REV	DATE	DESCRIPTION

SHEET TITLE:  
CURB & GUTTER DETAIL  
(GEN-4)

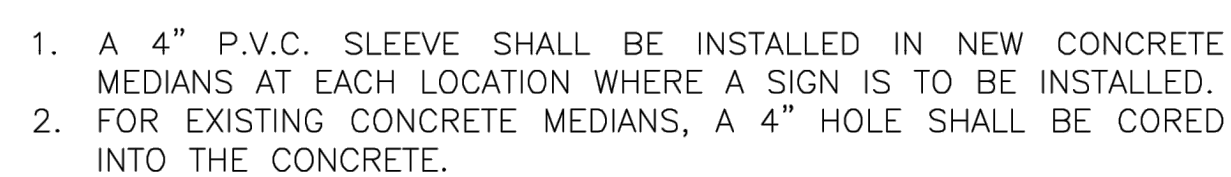
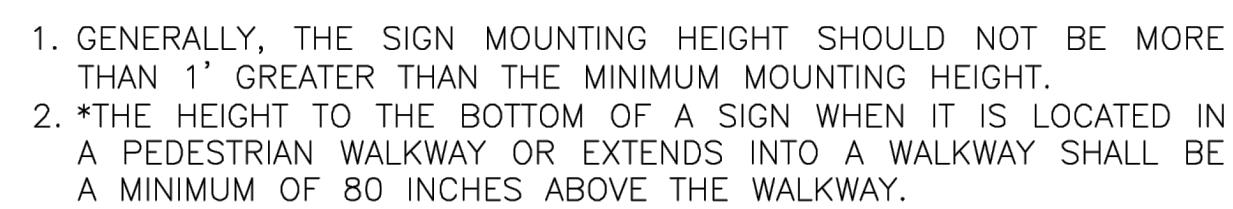
SHEET NUMBER:

12

ORIGINAL ISSUE DATE: 05/09/2025

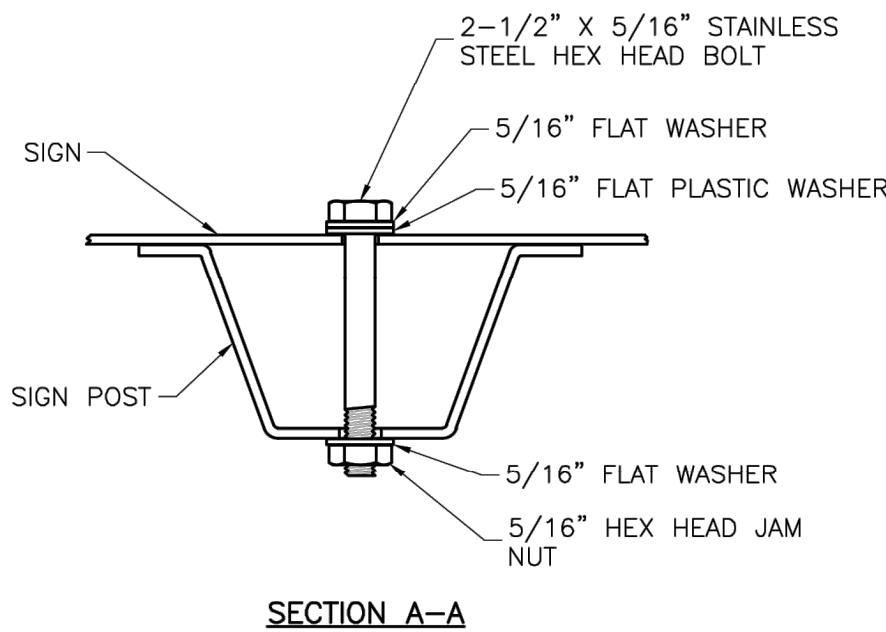
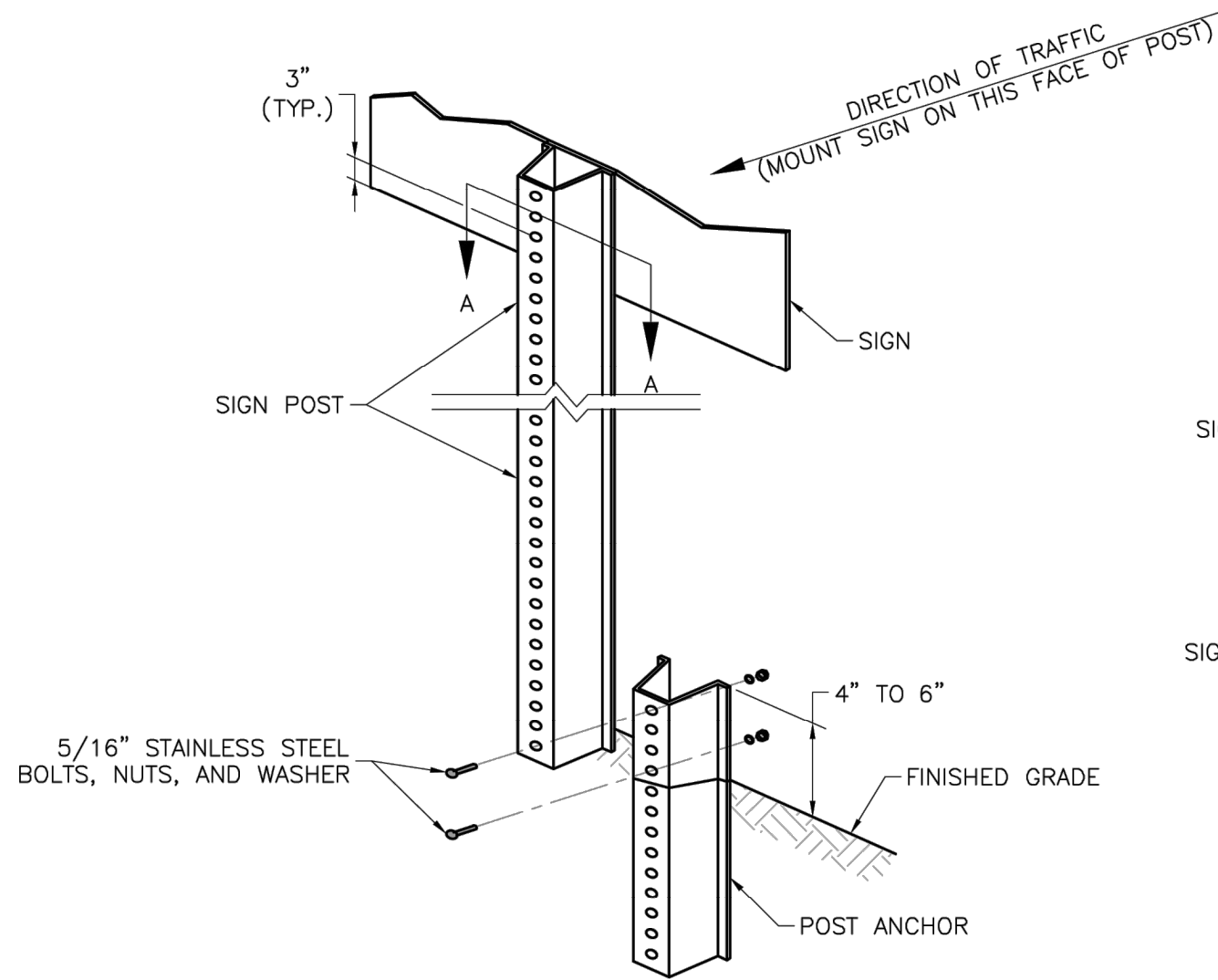






15

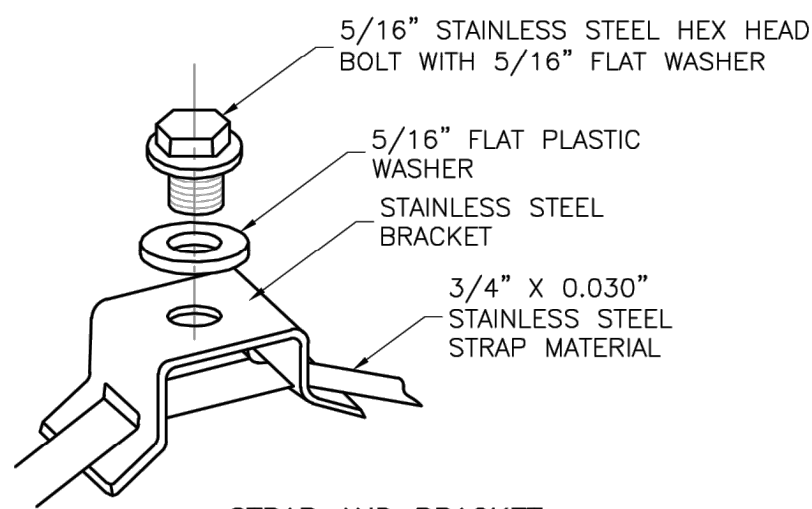
FILE LOCATION: \\desktop-him8gp\civil 3d projects-him8gp\lee's summit, mo\02-0183 DETAILS CITY.dwg TAB NAME:9 USER:rdhol SAVED:4/16/2025 1:00 PM PLOTTED:5/9/2025 10:53 AM



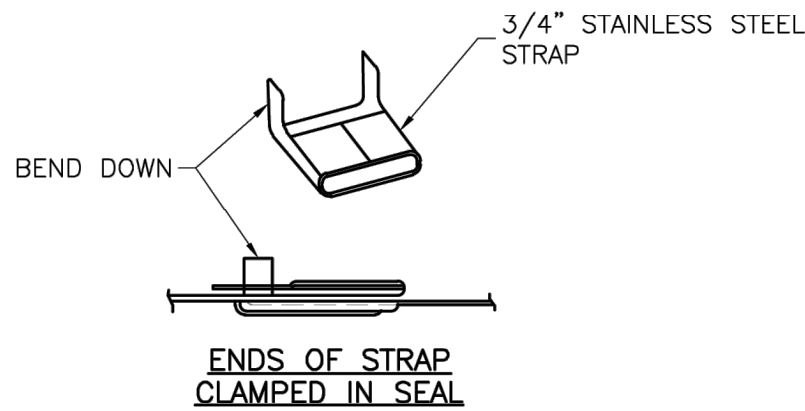
### U-STEEL POST DETAILS

#### NOTES:

1. SPLICE SHALL BE POSITIONED ENTIRELY BETWEEN FINISHED GRADE LINE AND 18" ABOVE FINISHED GRADE LINE. ONLY ONE SPLICE WILL BE ALLOWED PER POST.
2. U-STEEL POST SHALL BE 3 LB./FT., GALVANIZED ACCORDING TO ASTM A123.
3. U-STEEL POST CAN BE USED FOR INSTALLATION OF SIGNS WITH AN AREA OF LESS THAN 2.5 SQUARE FEET.
4. ALL POSTS SHALL BE EMBEDDED A MINIMUM OF 3 FEET.



STRAP AND BRACKET INSTALLATION



### STRAP TYPE SIGN SUPPORT DETAILS

#### NOTES:

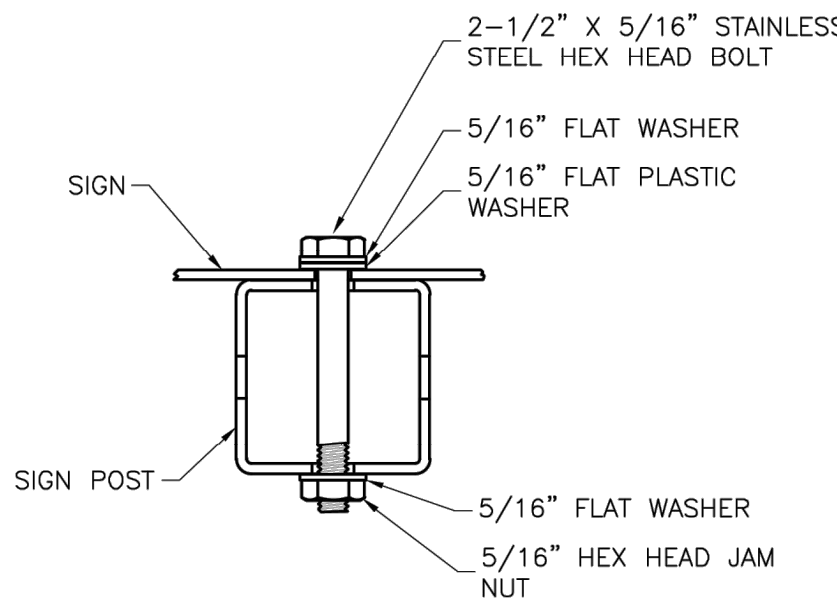
1. SIGNS ON METAL POLES SHALL BE ATTACHED WITH TWO BRACKETS AND STAINLESS STEEL BANDS.
2. HOLES IN SIGN FOR ATTACHMENT TO THE MOUNTING BRACKETS SHALL BE OFFSET A MINIMUM OF 2 INCHES FROM THE EDGE OF THE SIGN.
3. HOLES IN SIGN SHALL BE LOCATED SUCH THAT THE SIGN IS LEVEL.
4. ALL STRAP, BRACKET, AND SEAL MATERIALS SHOULD BE TYPE 201 STAINLESS STEEL.

#### PERMANENT SIGNING GENERAL NOTES:

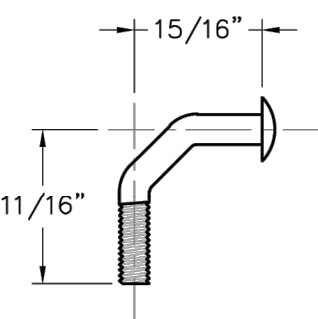
1. ALL SIGNING SHALL BE IN ACCORDANCE WITH THE LATEST EDITION OF THE MANUAL ON UNIFORM TRAFFIC CONTROL DEVICES (MUTCD).
2. THE CONTRACTOR IS RESPONSIBLE FOR AVOIDING ANY AND ALL UTILITIES WHEN INSTALLING SIGN POSTS, WHETHER THE UTILITY IS INDICATED ON THE PLANS OR NOT.
3. ALL WORKMANSHIP AND MATERIALS SHALL BE SUBJECT TO THE INSPECTION AND APPROVAL OF THE PUBLIC WORKS DEPARTMENT OF THE CITY OF LEE'S SUMMIT.
4. THE CONTRACTOR SHALL STAKE THE LOCATION OF ALL SIGN POSTS TO BE INSTALLED. THE CITY INSPECTOR SHALL INSPECT THE STAKING PRIOR TO INSTALLATION. MINOR RELOCATION TO AVOID CONFLICTS MAY BE ALLOWED WITH THE APPROVAL OF THE CITY TRAFFIC ENGINEER.
5. SIGNS SHOWN TO BE INSTALLED ON THE SIDE OF METAL POLES SHALL BE MOUNTED WITH STAINLESS STEEL STRAPS OR WING BRACKETS AS DETAILED. NO SIGNS ARE TO BE INSTALLED ON WOOD POLES. SEE TRAFFIC SIGNAL STANDARD DRAWINGS FOR THE INSTALLATION OF SIGNS ON MAST ARMS.
6. ALL POST MOUNTED SIGNS SHALL BE INSTALLED WITH BREAKAWAY ANCHORS ACCORDING TO THE STANDARD DRAWINGS.
7. ALL EXISTING SIGNS WILL BE USED IN PLACE DURING CONSTRUCTION AND PROTECTED FROM DAMAGE UNLESS OTHERWISE INDICATED IN THE PLANS. IF THE CONTRACTOR DAMAGES ANY EXISTING SIGN OR POSTS DURING CONSTRUCTION, THE CONTRACTOR WILL BE REQUIRED TO REPLACE THE DAMAGED MATERIALS WITH NEW SIGNS OR POSTS AT THE CONTRACTOR'S EXPENSE. THE CONTRACTOR SHALL BE RESPONSIBLE FOR REMOVING AND STORING ANY SIGNS THAT ARE TO BE REINSTALLED ON THE PROJECT. ALL EQUIPMENT SHALL BE REINSTALLED IN GOOD CONDITION.
8. EXISTING PERMANENT SIGNS AND POSTS REMOVED BY THE CONTRACTOR FOR CONSTRUCTION PURPOSES WHICH ARE NOT TO BE REINSTALLED SHALL BE DELIVERED TO THE CITY'S PUBLIC WORKS MAINTENANCE FACILITY (1971 SE HAMBLÉN ROAD). THE CONTRACTOR SHALL BE RESPONSIBLE FOR REMOVING AND STORING EQUIPMENT IN GOOD CONDITION AND IS FULLY RESPONSIBLE FOR THE EQUIPMENT UNTIL IT IS DELIVERED.
9. ALL STOP, YIELD, OR STREET NAME SIGNS SHALL BE MAINTAINED IN A CONSPICUOUS LOCATION FOR THE DRIVING PUBLIC. ALL STOP AND YIELD SIGNS REMOVED FOR CONSTRUCTION PURPOSES CAN BE TEMPORARILY ERECTED IN REFLECTORIZED DRUMS (NO LESS THAN 7 FEET ABOVE THE PAVEMENT SURFACE) UNTIL THEY CAN BE REINSTALLED. ANY TEMPORARY STOP OR YIELD SIGN INSTALLATION TO BE LEFT IN PLACE OVERNIGHT WILL REQUIRE PRIOR APPROVAL FROM THE CITY INSPECTOR.

#### SQUARE STEEL POST INSTALLATION SEQUENCE:

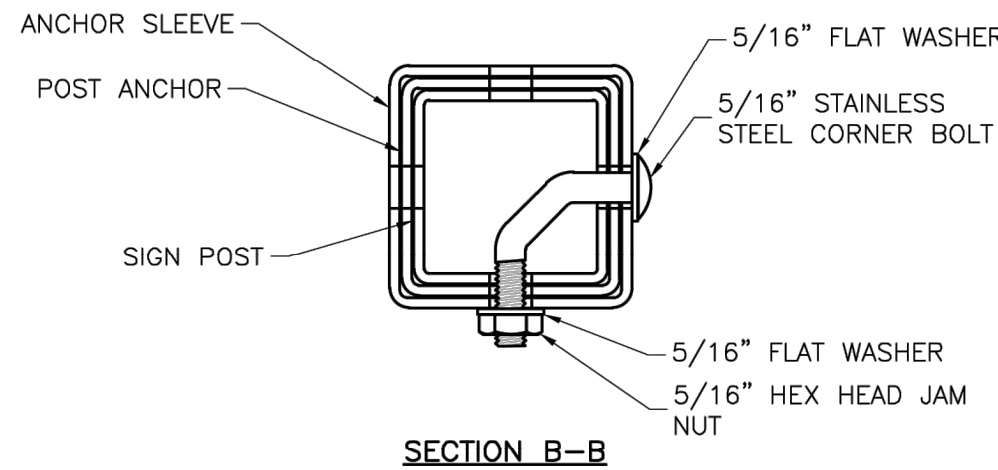
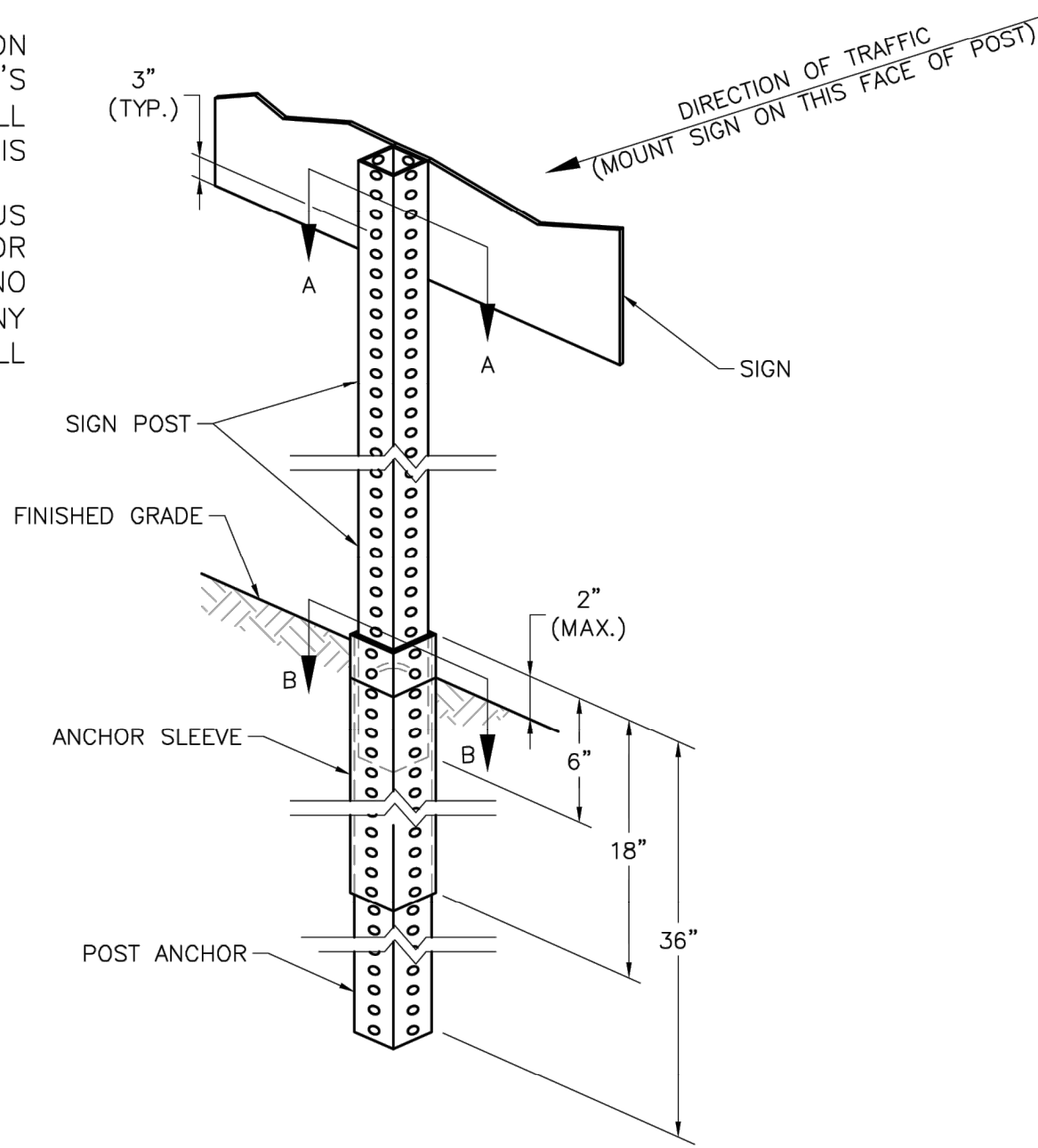
1. SIGN POST ANCHOR DRIVEN PARTIALLY INTO THE GROUND USING A DRIVE CAP WITH A SLEDGE OR POWER EQUIPMENT.
2. ANCHOR SLEEVE SLIPPED OVER ANCHOR AND DRIVE INTO THE GROUND TOGETHER WITH THE SIGN POST ANCHOR.
3. INSERT SIGN POST INTO THE POST ANCHOR AND BOLT IN PLACE.



SECTION A-A



CORNER BOLT



### SQUARE STEEL POST DETAILS

#### NOTES:

1. SQUARE STEEL SIGN POSTS AND BREAK-AWAY ANCHOR SHALL CONSIST OF THE FOLLOWING MATERIALS:  
SIGN POST - 14 GA. 2" X 2" SQUARE STEEL POST  
POST ANCHOR - 12 GA. 2 1/2" X 2 1/2" X 36" SQUARE STEEL POST  
ANCHOR SLEEVE - 12 GA. 2 1/2" X 2 1/2" X 18" SQUARE STEEL POST
2. 14 GA. POSTS MUST MEET A CERTIFIED MINIMUM YIELD STRENGTH OF 60,000 PSI.
3. IN ALL INSTALLATIONS THE FIRST HOLE ABOVE THE FINISHED GRADE LINE ON THE SIGN POST, ANCHOR, AND ANCHOR SLEEVE MUST BE IN LINE FOR THE INSERTION OF THE CORNER BOLT.
4. THE MAXIMUM AREA FOR ONE SIGN POST IS 9.0 SQUARE FEET. A SIGN OR COMBINATION OF SIGNS WITH AN AREA GREATER THAN 9.0 SQUARE FEET WILL REQUIRE TWO POSTS. ALSO, SIGNS WITH A WIDTH GREATER THAN OR EQUAL TO 48" (NOT INCLUDING 36" X 36" DIAMOND SHAPED SIGNS) WILL REQUIRE TWO POSTS.

**LS LEE'S SUMMIT**  
MISSOURI

STANDARD DETAILS  
CITY OF LEE'S SUMMIT, MO  
LEE'S SUMMIT, JACKSON COUNTY, MO

POST DETAILS

Drawn By: BWC

Checked By: MP

Date: 01/2020

Proj. #:

SN-2

CITY  
STANDARD  
DETAILS

PROJECT NO.:02-0183

**MDG**  
Midwest Design Group  
Kansas City

PO Box 860015  
Shawnee, KS 66286-0015  
P 913.248.9385

PUBLIC IMPROVEMENT PLANS  
IN ASSOCIATION WITH  
**QuikTrip No. 0183R**  
1001 SW BLUE PARKWAY  
LEE'S SUMMIT, JACKSON CO., MO 64063

**QT**

© COPYRIGHT QUIKTRIP CORPORATION 2011  
ANY UNAUTHORIZED USE, REPRODUCTION,  
PUBLICATION, DISTRIBUTION, OR SALE IN  
WHOLE OR IN PART, IS STRICTLY FORBIDDEN.

PROTOTYPE: P-120  
DIVISION: 02  
VERSION: 001  
DESIGNED BY: CSH  
DRAWN BY: CSH  
REVIEWED BY: TRW

REV	DATE	DESCRIPTION

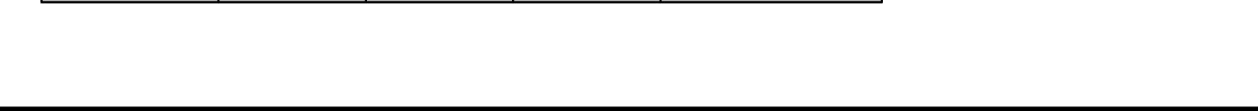
ORIGINAL ISSUE DATE: 05/09/2025

SHEET TITLE:

POST DETAILS (SN-2)

SHEET NUMBER:

16

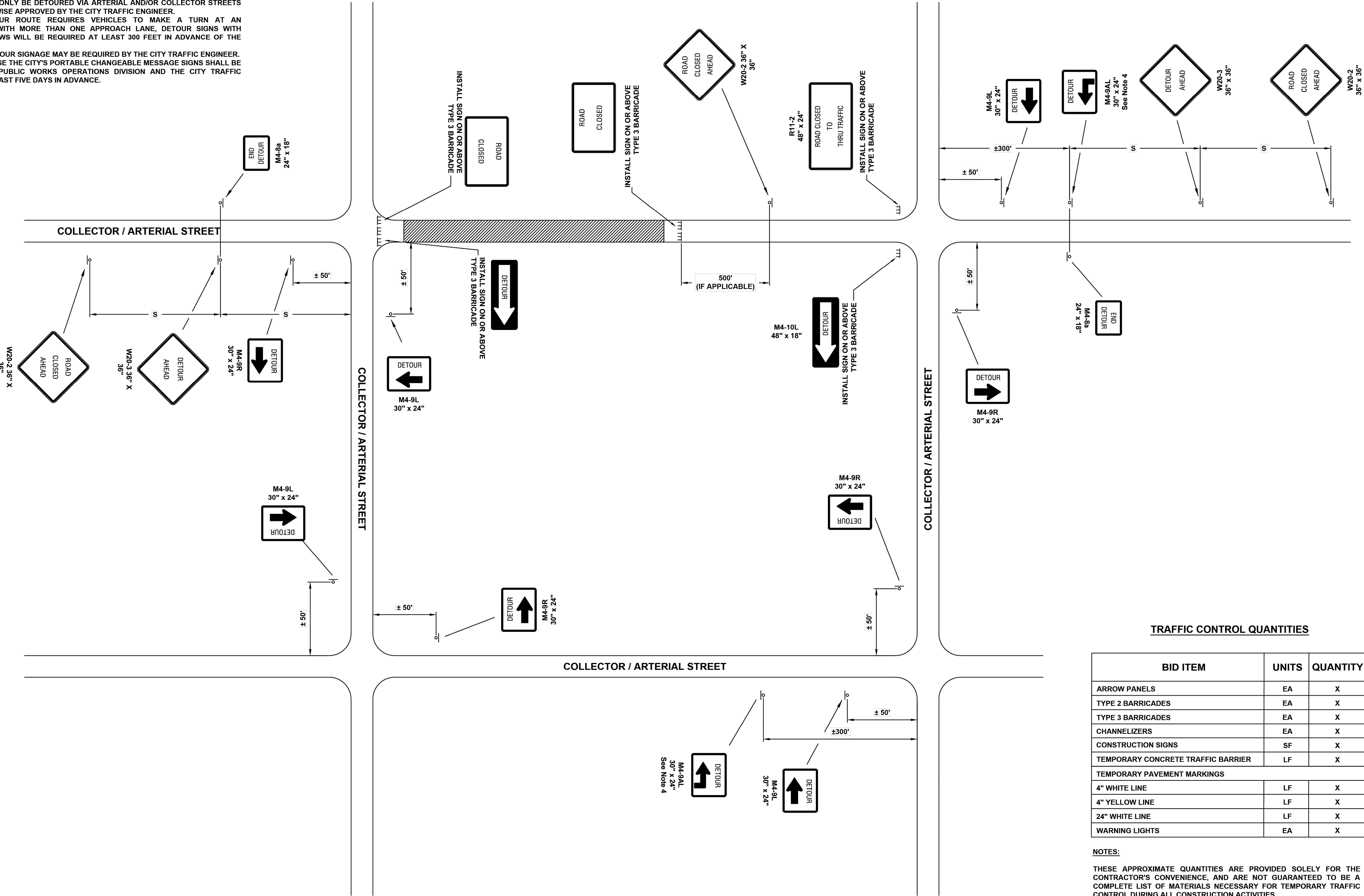


- 17

FILE LOCATION: \\desktop-himc8p\civil 3d projects-himc8p\civil 3d projects\lee's summit, mo\02-0183 DETAILS CITY.dwg TAB NAME:11 USRRakhol SAVED:4/16/2025 1:00 PM PLOTTED:5/9/2025 10:53 AM

NOTES:

1. ALL SIGNS, BARRICADES, CHANNELIZERS, MARKINGS AND OTHER TRAFFIC CONTROL DEVICES SHALL CONFORM TO THE MANUAL ON UNIFORM TRAFFIC CONTROL DEVICES (MUTCD).
2. DETOUR ROUTES ARE NOT REQUIRED TO BE POSTED FOR THE CLOSURE OF A LOCAL STREET.
3. TRAFFIC SHALL ONLY BE DETOURED VIA ARTERIAL AND/OR COLLECTOR STREETS UNLESS OTHERWISE APPROVED BY THE CITY TRAFFIC ENGINEER.
4. WHEN A DETOUR ROUTE REQUIRES VEHICLES TO MAKE A TURN AT AN INTERSECTION WITH MORE THAN ONE APPROACH LANE, DETOUR SIGNS WITH ADVANCE ARROWS WILL BE REQUIRED AT LEAST 300 FEET IN ADVANCE OF THE INTERSECTION.
5. ADDITIONAL DETOUR SIGNAGE MAY BE REQUIRED BY THE CITY TRAFFIC ENGINEER.
6. REQUESTS TO USE THE CITY'S PORTABLE CHANGEABLE MESSAGE SIGNS SHALL BE MADE TO THE PUBLIC WORKS OPERATIONS DIVISION AND THE CITY TRAFFIC ENGINEER AT LEAST FIVE DAYS IN ADVANCE.



TRAFFIC CONTROL QUANTITIES

BID ITEM	UNITS	QUANTITY
ARROW PANELS	EA	X
TYPE 2 BARRICADES	EA	X
TYPE 3 BARRICADES	EA	X
CHANNELIZERS	EA	X
CONSTRUCTION SIGNS	SF	X
TEMPORARY CONCRETE TRAFFIC BARRIER	LF	X
TEMPORARY PAVEMENT MARKINGS		
4" WHITE LINE	LF	X
4" YELLOW LINE	LF	X
24" WHITE LINE	LF	X
WARNING LIGHTS	EA	X

NOTES:

THESE APPROXIMATE QUANTITIES ARE PROVIDED SOLELY FOR THE CONTRACTOR'S CONVENIENCE, AND ARE NOT GUARANTEED TO BE A COMPLETE LIST OF MATERIALS NECESSARY FOR TEMPORARY TRAFFIC CONTROL DURING ALL CONSTRUCTION ACTIVITIES.

REV	DESCRIPTION	DATE

**LEE'S SUMMIT**  
**MISSOURI**

PUBLIC WORKS ENGINEERING DIVISION | 220 SE GREEN STREET | LEE'S SUMMIT, MO 64083

**STANDARD DETAILS**  
PUBLIC WORKS ENGINEERING  
LEE'S SUMMIT, JACKSON COUNTY, MISSOURI

**TRAFFIC CONTROL DETAILS**

DRAWN BY:	CNS
CHECKED BY:	MJF
DATE:	05/13/2024
PROJECT #:	

TC-2

CITY  
STANDARD  
DETAILS

PROJECT NO.:02-0183

**MDG**  
Midwest Design Group  
Kansas City

PO Box 860015  
Shawnee, KS 66286-0015  
P 913.248.9385

PUBLIC IMPROVEMENT PLANS  
IN ASSOCIATION WITH  
**QuikTrip No. 0183R**  
1001 SW BLUE PARKWAY  
LEE'S SUMMIT, JACKSON CO., MO 64063



© COPYRIGHT QUIKTRIP CORPORATION 2011  
ANY UNAUTHORIZED USE, REPRODUCTION,  
PUBLICATION, DISTRIBUTION, OR SALE IN  
WHOLE OR IN PART, IS STRICTLY FORBIDDEN.

PROTOTYPE:	P-120
DIVISION:	02
VERSION:	001
DESIGNED BY:	CSH
DRAWN BY:	CSH
REVIEWED BY:	TRW

REV	DATE	DESCRIPTION

SHEET TITLE:  
TRAFFIC CONTROL DETAILS  
(TC-2)

SHEET NUMBER:

18

ORIGINAL ISSUE DATE: 05/09/2025