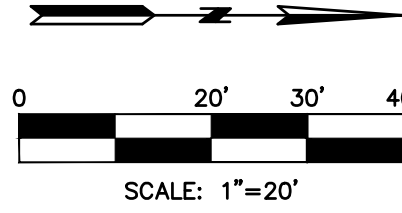
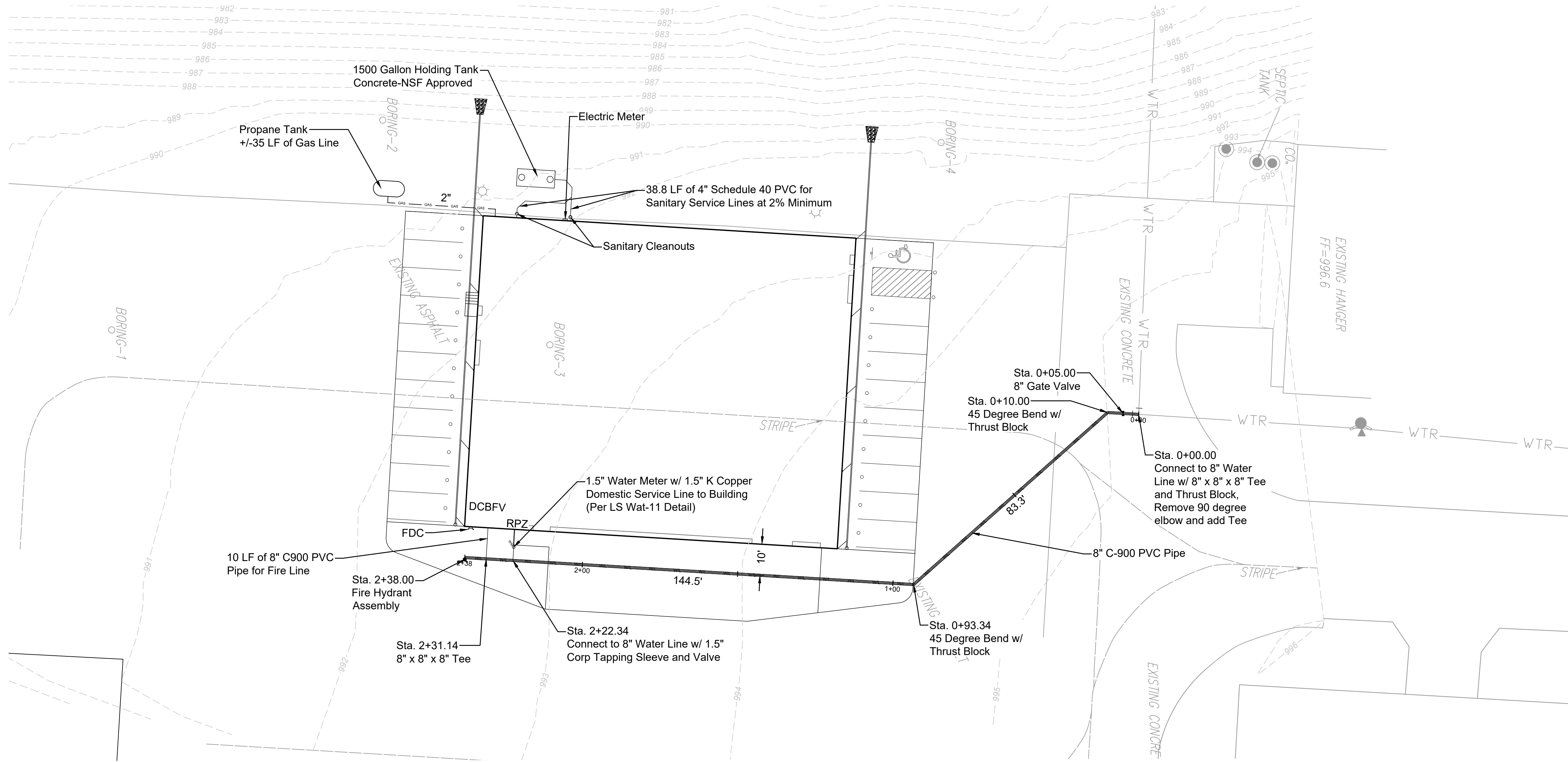


FILE LOCATION: G:\SHARED DRIVES\HKS PROJECTS\016 2023-2024\04-092 LEE'S SUMMIT AIRPORT HANGER\001\DWG\025-092-02.DWG & WATERLWG
PLOT DATE: 04/24/25 11:48 AM BY: JACK WALSHON



GENERAL NOTES:

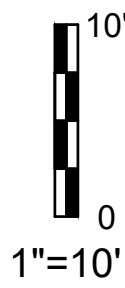
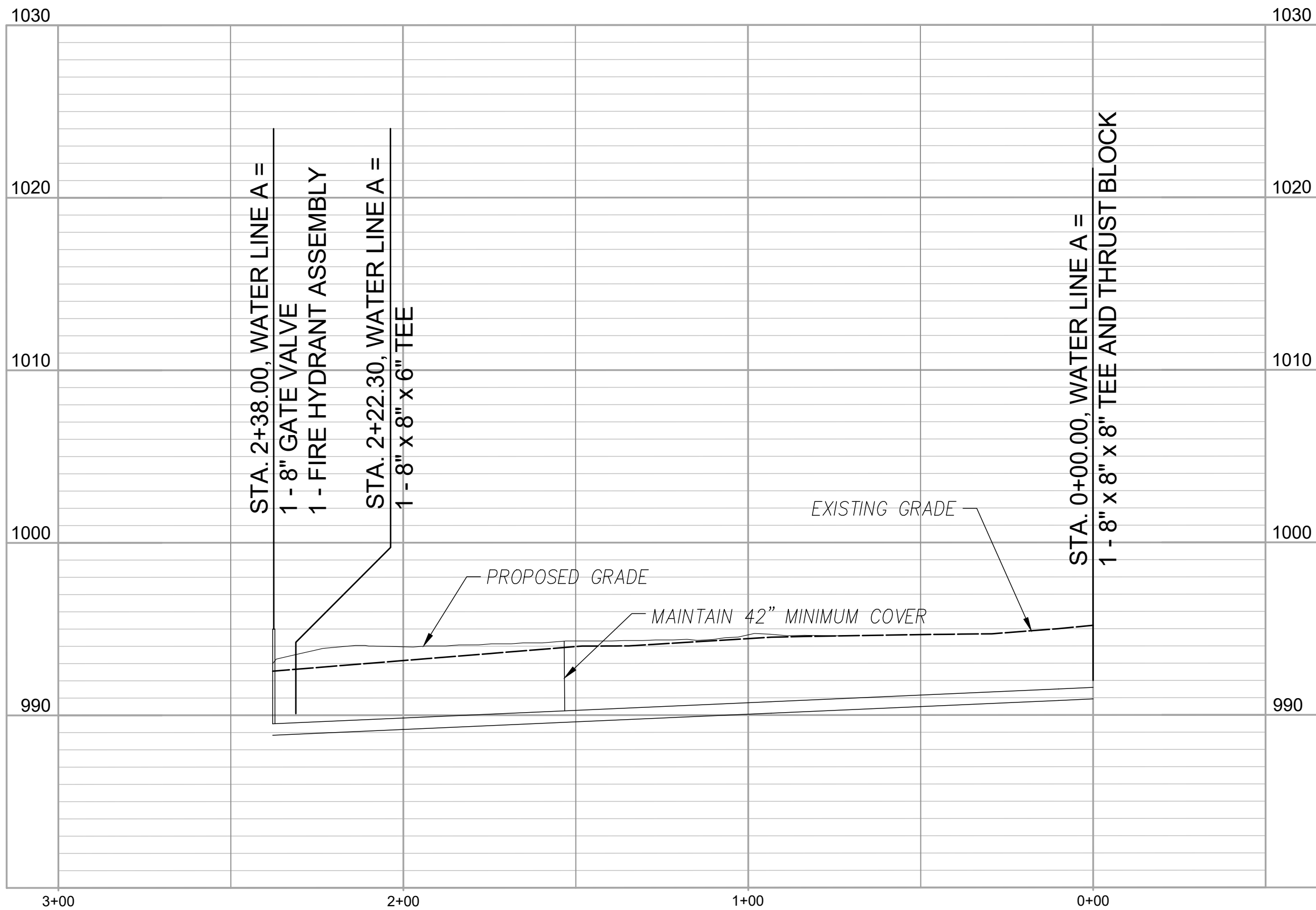
- See architectural submittal for all building details, lighting details, and MEP plans

UTILITY NOTES:

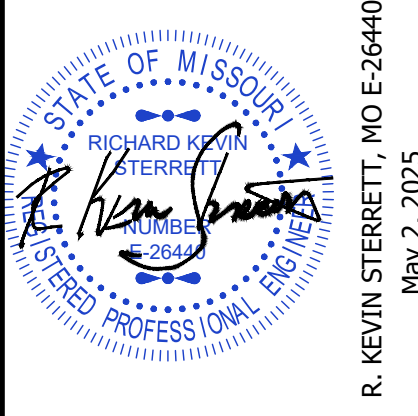
- All utility installation to be in accordance to Lee's Summit "DESIGN AND CONSTRUCTION MANUAL" per Ordinance 5813. See manual for specifications and standard details.
- Roof Drains (RD) to be released directly to detention pond (Where applicable)
- Contractor to contact the Water Utilities Department, Operations Division, at (816) 969-7606 to schedule water main taps and cut-ins 48 hours in advance.
- Thrust Blocks to be provided at all water line bend and tee locations.
- Domestic water lines to be 1" diameter Type K Copper from main to meter and 1 1/2" diameter C900 PVC from meter to building.
- Contractor to coordinate with KCPL for temporary and permanent electric alignment and connection
- See MEP plans for all utility, double check backflow and RPZ valves inside of building.
- PVC C900 pipe may be used in lieu of DIP.

NOTE:

- According to the F.E.M.A. FIRM Map No. 29095C0409G, dated January 20, 2017 and FIRM Map No. 29095C0430G, dated January 20, 2017, this tract graphically lies in OTHER AREAS, ZONE X, defined as areas determined to be outside the 0.2% annual chance floodplain.
- This site lies in the MAYBROOK WATER SHED.
- There are no Oil and Gas Wells on this site per Missouri Department of Natural Resources GeoSTRAT.
- Trash will be collected inside and removed from site by owner.
- The double check back flow valve (DCBFV) will be located inside the hangar in the SE corner as shown.
- The domestic water RPZ will be located inside the hangar.



DATE	REVISION	NO.	BY	CHK/APP



R. KEVIN STERRETT, MO E-26440
May 2, 2025

18consult
Inc
engineers
planners

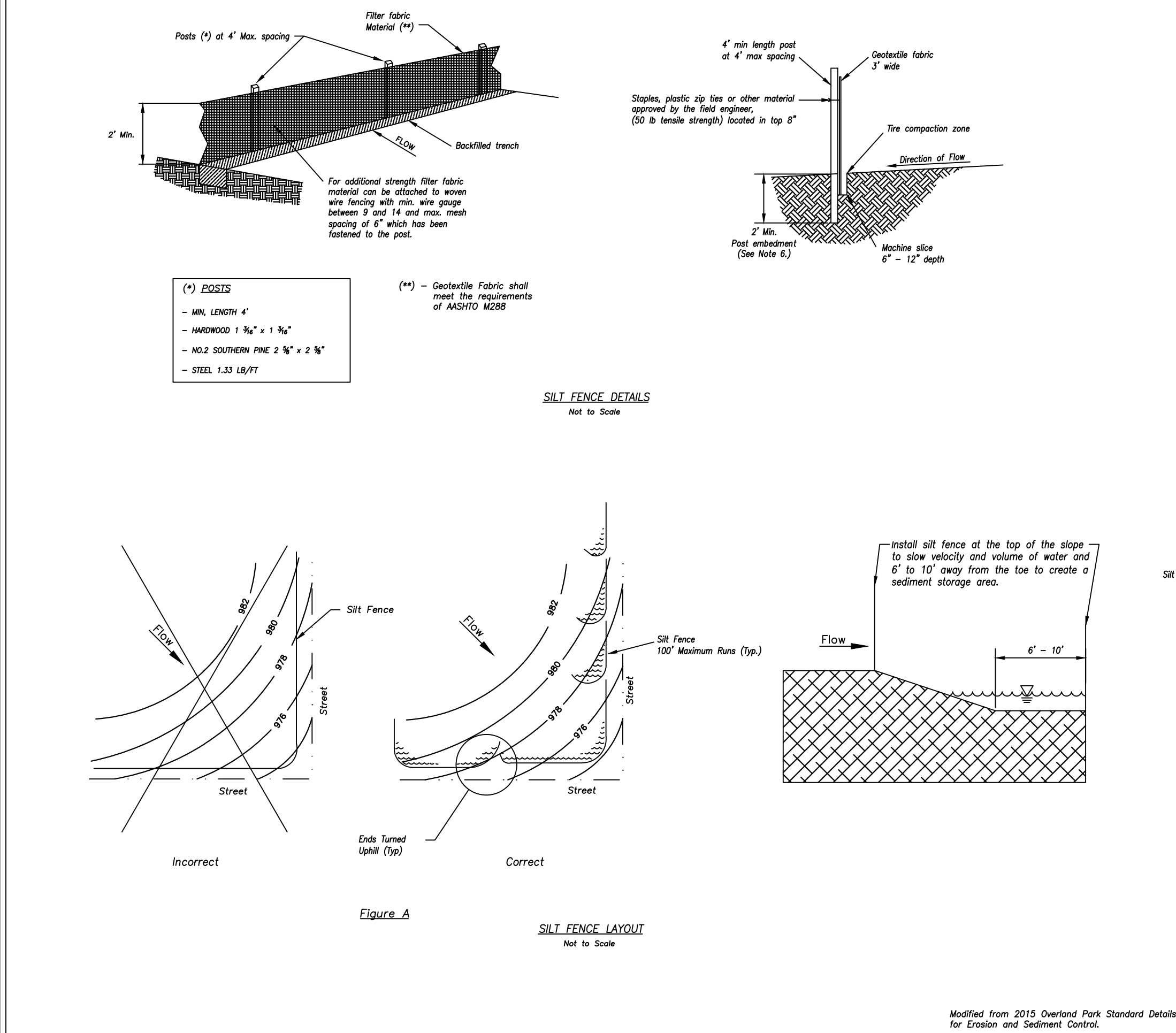
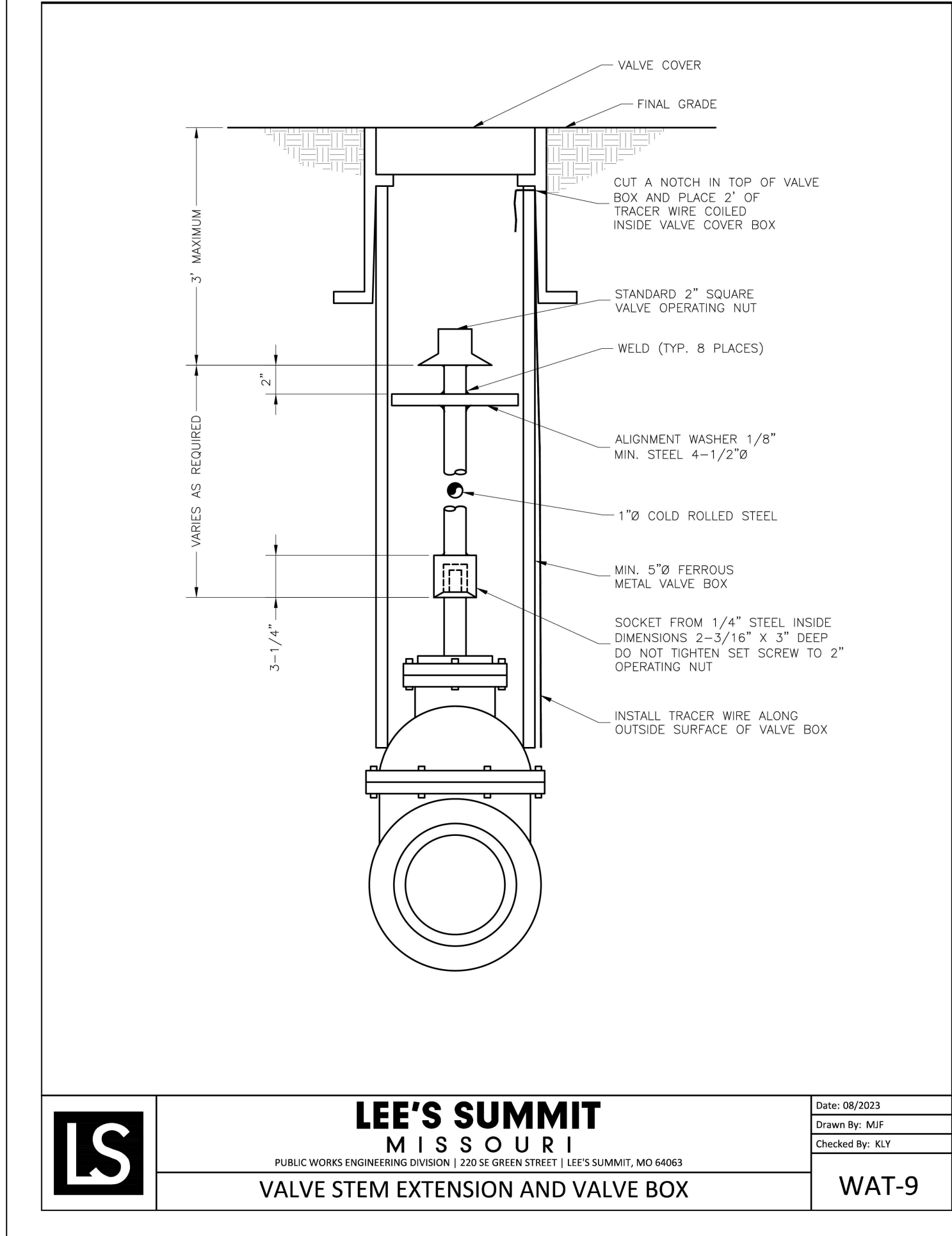
1533 Locust Street, Kansas City, Missouri 64108
CORPORATE LICENSE NO. E201000573 (MO.) / E-1736 (KS.) / LS 2019005467

UTILITY PLAN

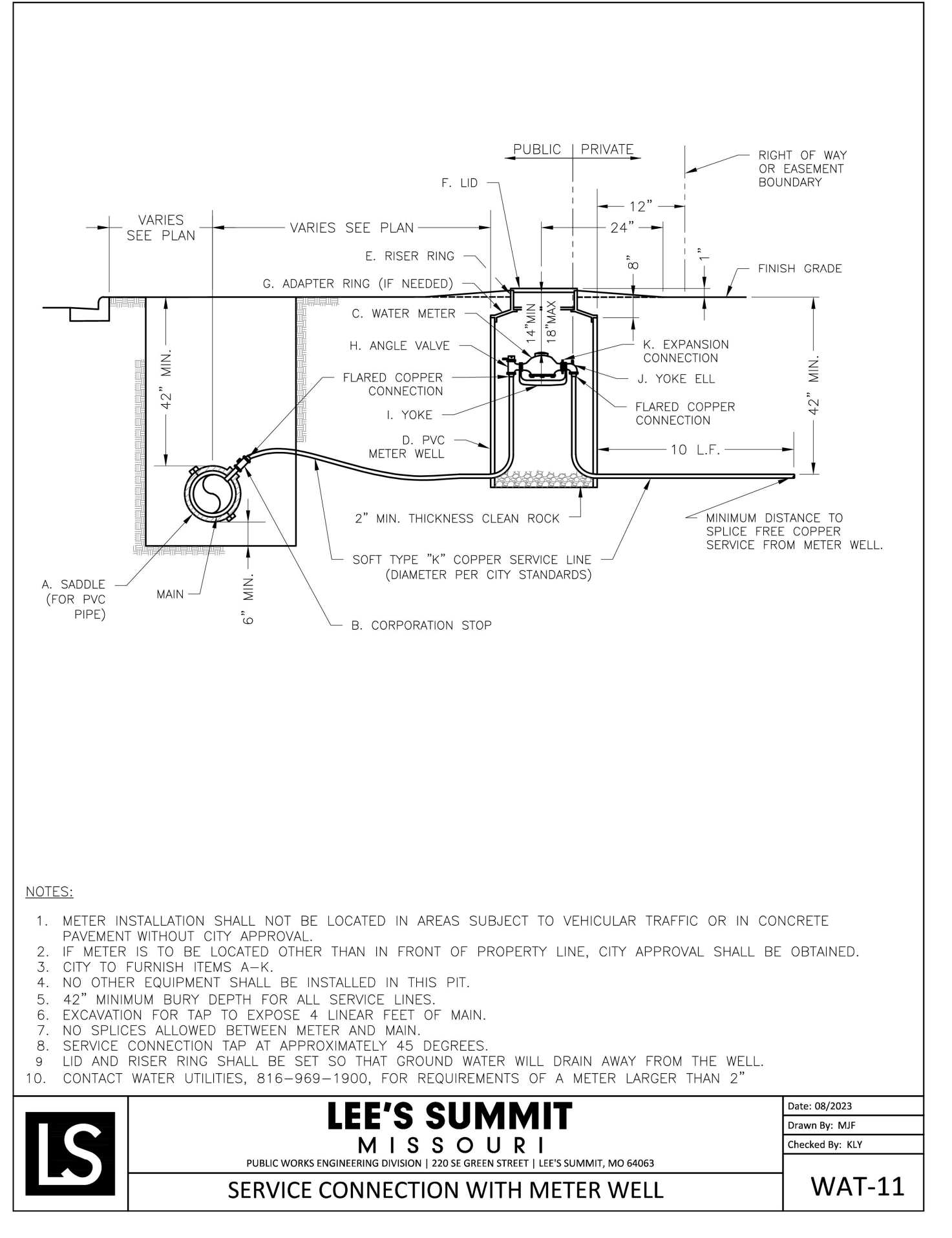
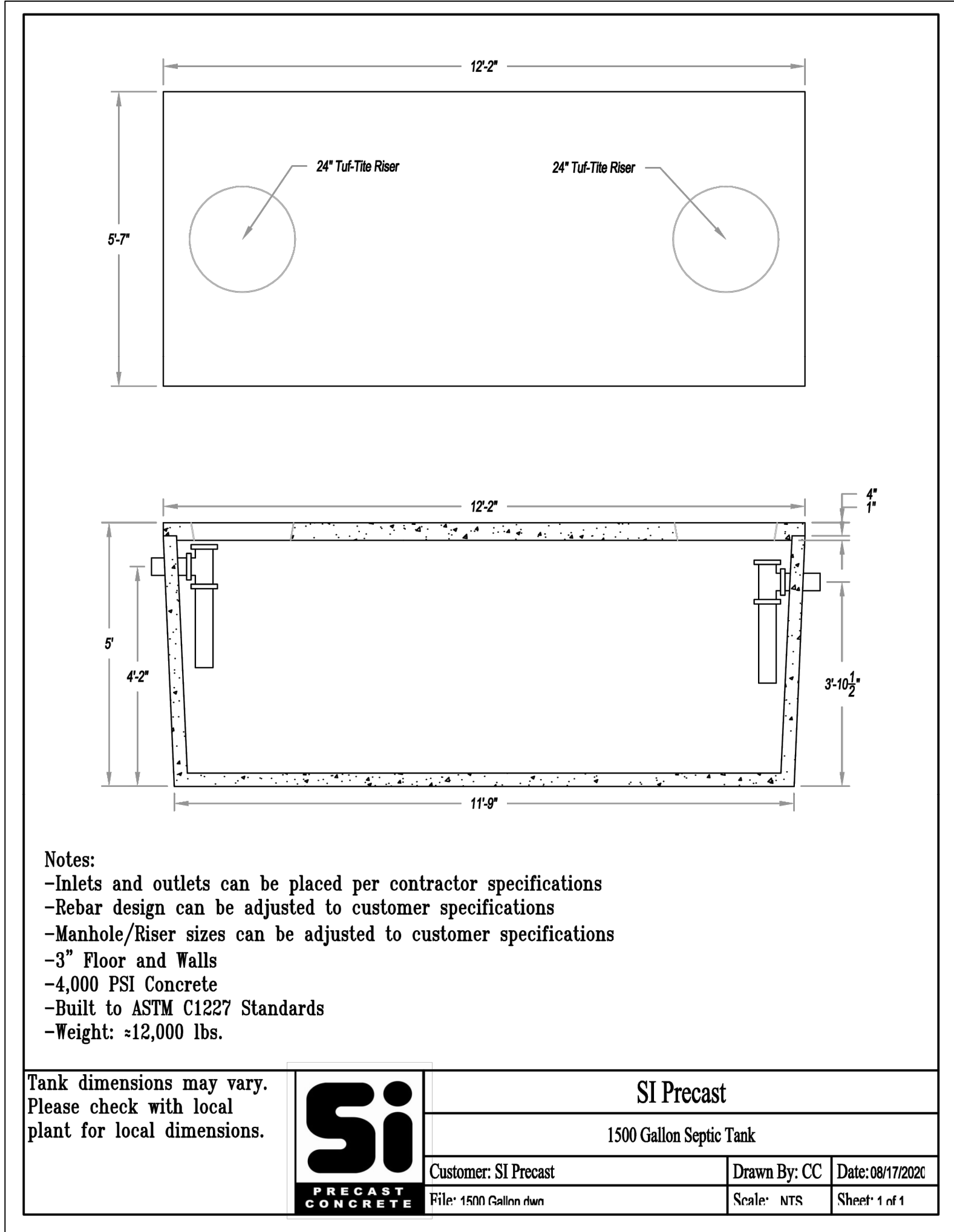
MIDWEST AVIONICS HANGAR
CITY OF LEE'S SUMMIT, JACKSON COUNTY, MISSOURI

X-REF NO. 24.092 Base	7	9
DRAWING NO. 24.092		
DATE May 2, 2025		
JOB NO. 24.092		
SHEET OF		

FILE LOCATION G:\SHARED DRIVING\ENGINE PROJECTS\1916-2023\2023\04\04\002 LEE'S SUMMIT AIRPORT HANGER\KOPIN\DWG\LSHEET_F1552A.092-DETAILS.DWG
PLOT DATE 5/2/2025 11:28 AM by JACK WALSHAM

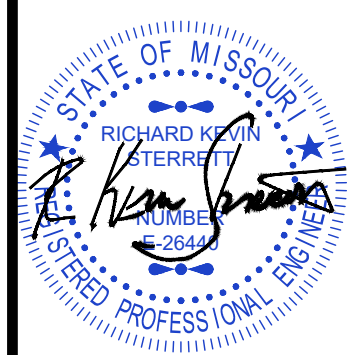


AMERICAN PUBLIC WORKS ASSOCIATION	
	KANSAS CITY METRO CHAPTER
SILT FENCE	STANDARD DRAWING NUMBER ESC-03 ADOPTED: 10/24/2016



DETAILS SHEET

MIDWEST AVIONICS HANGAR
CITY OF LEE'S SUMMIT, JACKSON COUNTY, MISSOURI



R. KEVIN STERRETT, MO E-26440
May 2, 2025

18 Consult Inc
engineers planners
1533 Locust Street, Kansas City, Missouri 64108
CORPORATE LICENSE NO. E201000573 (MO.) / E-1736 (KS.) / LS 2019005467

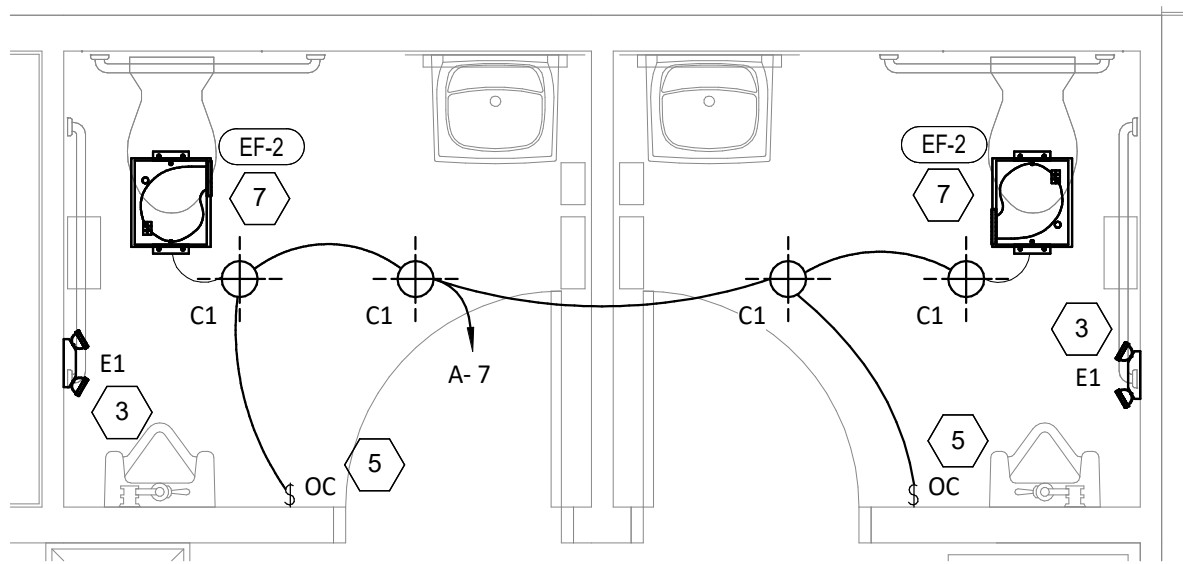
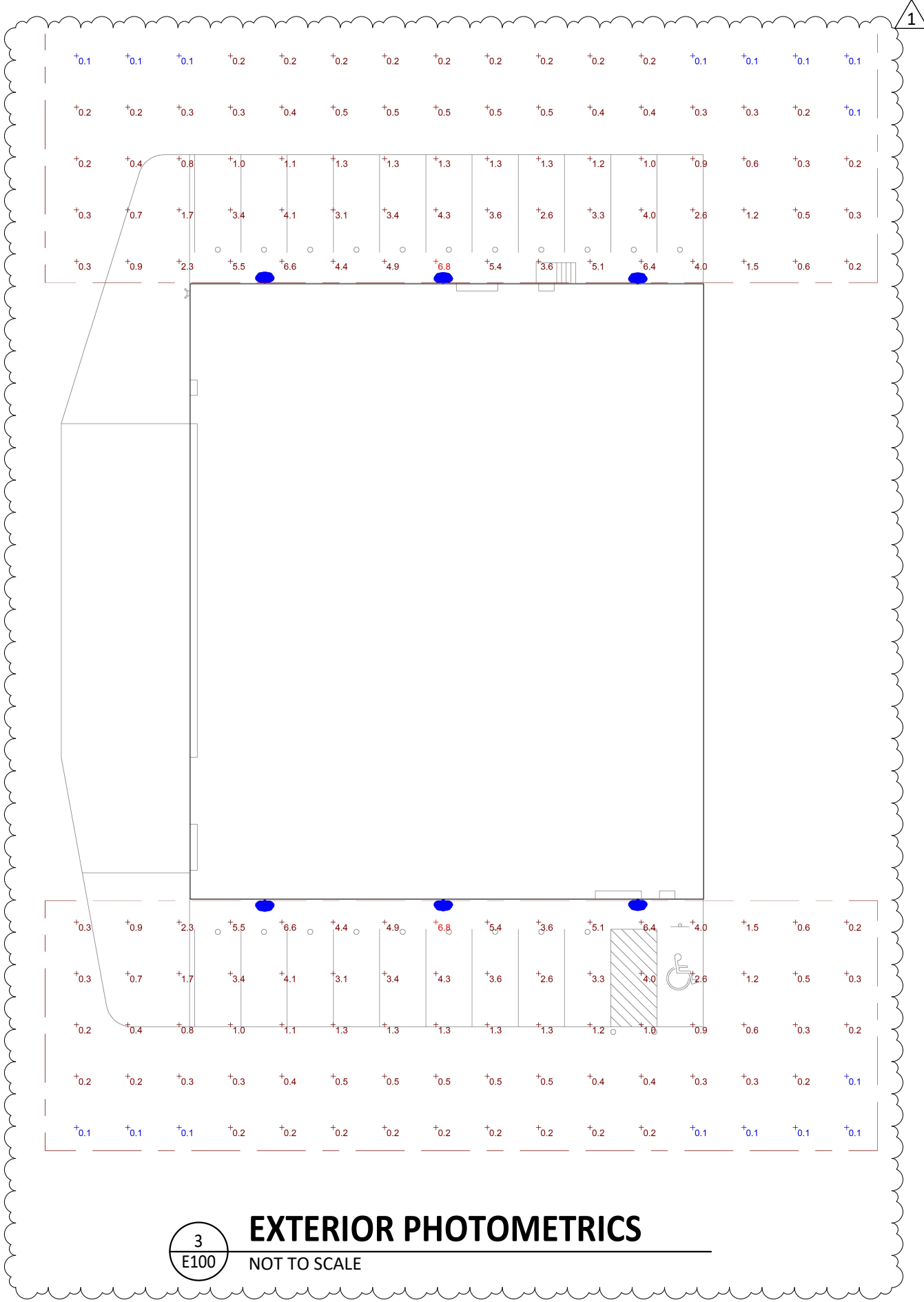
X-REF NO. 24.092 Base	
DRAWING NO. 24.092	
DATE May 2, 2025	
JOB NO. 24.092	
9 SHEET OF 9	

ELECTRICAL LIGHTING PLAN NOTES

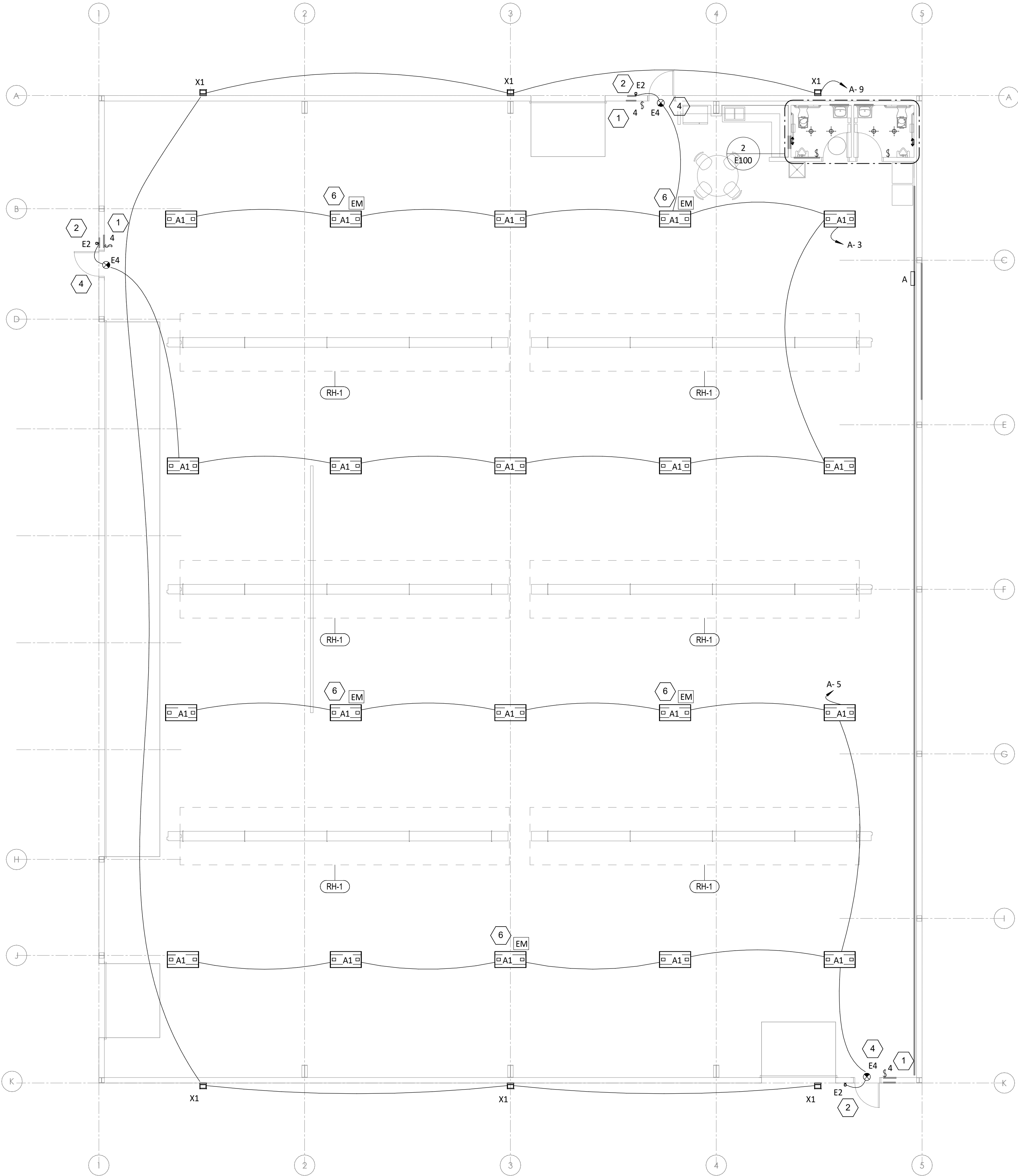
- 1 PROVIDE 4-WAY SWITCH FOR HIGH BAY HANGAR LIGHTING. VERIFY SWITCH LOCATIONS AND CONTROL ZONES WITH OWNER PRIOR TO INSTALL.
- 2 PROVIDE REMOTE EMERGENCY LIGHT MOUNTED AT 8'-0" AFF. COORDINATE EXACT LOCATION WITH OWNER AND CONCEAL LOW VOLTAGE WIRING TO INTERIOR EXIT SIGN.
- 3 WALL MOUNT THE EMERGENCY LIGHT FIXTURE AT 6" BELOW THE CEILING. PROVIDE UNSWITCHED HOT TO FIXTURE, CIRCUITED AHEAD OF ALL LOCAL AND GLOBAL SWITCHING.
- 4 VERIFY MOUNTING HEIGHT OF EXIT SIGN PRIOR TO ROUGH IN.
- 5 INSTALL WALL-MOUNTED OCCUPANCY SENSOR AT 42" AFF. ADJUST OCCUPANCY SENSOR TO PROVIDE AUTOMATIC ON/AUTOMATIC OFF OPERATION WITH A FIXED TIMER OF 30 MINUTES AND WITH BOTH THE PASSIVE INFRARED AND ULTRASONIC SENSORS ENABLED.
- 6 EMERGENCY LIGHT FIXTURE SHALL BE SWITCHED DURING NORMAL OPERATION. UPON LOSS OF POWER, FIXTURE SHALL BE ENERGIZED VIA THE EMERGENCY FIXTURE, ONBOARD EMERGENCY LIGHTING INVERTER.
- 7 INTERLOCK EXHAUST FAN OPERATION WITH RESTROOM LIGHTING.

LIGHTING FIXTURE SCHEDULE

TAG	COUNT	DESCRIPTION	MOUNTING	VOLTAGE	WATTS	BASIS FOR DESIGN			REMARKS
						MANUFACTURER	MODEL	LAMP	
A1	20	MODULAR HIGH BAY	SUSPENDED	120 V	295 W	GH-4-L400-840-FA-UNIV	HE WILLIAMS	LED	COORDINATE MOUNTING HEIGHT WITH ARCHITECT. REFER TO E100 FOR FIXTURES THAT SHALL BE PROVIDED WITH AN EMERGENCY FEATURE. FIXTURES DENOTED WITH 'EM'. LED TRIM FURNISHED WITH GU24 SOCKET ADAPTER
C1	4	RECESSED 6IN CAN LIGHT	CEILING	120 V	17 W	NORA LIGHTING	NHIC-6G24ATFL WITH NLCBC-65130WW LED TRIM	LED	
E1	2	EMERGENCY LIGHT - DUAL HEAD	WALL	120 V	2 W	EXITRONIX	LED-90	INTEGRAL LED	90 MINUTE BATTERY BACKUP
E2	3	EXTERIOR REMOTE EMERGENCY LIGHT	WALL	4 V	1 W	EXITRONIX	MLED1-WP	INTEGRAL LED	LOW VOLTAGE REMOTE EMERGENCY LIGHT POWERED BY REMOTE-CAPABLE EXIT SIGN WITH MOUNTING PLATE
E4	3	EXIT SIGN WITH EMERGENCY LIGHT - STANDARD RED LETTERS	WALL	120 V	2 W	EXITRONIX	CLED-U	INTEGRAL LED	90 MINUTE BATTERY BACKUP WITH INTEGRAL EMERGENCY LIGHT, REMOTE HEAD CAPABLE
X1	6	EXTERIOR WALL PACK	WALL	120 V	49 W	HE WILLIAMS	VWPH-L60-840-T3-SDGL	LED	MOUNT AT 15'-0". COORDINATE FINISH WITH ARCHITECT.



2
E100
ENLARGED LIGHTING PLAN
3/8" = 1'-0"



1
E100
LIGHTING FLOOR PLAN
1/8" = 1'-0"

NEW BUILDING FOR:
LS MANAGEMENT SERVICES, LLC
STREET ADDRESS TBD
LEE'S SUMMIT, MO



Blanchard AE Group

1425 WAKARUSA DR. STE B
LAWRENCE, KS 66049
PH:785-893-0300



112 S. Main St., Nixa, MO 65714 Ph: 417-724-8853
NATHAN RAPP, ARCHITECT #A-200808021

REISSUE DATE

ADDENDUM 1 - 05/02/2025

PROFESSIONAL OF RECORD

ARCHITECT RAPP

PROJECT NO. 241121

DATE 04/14/2025

DRAWING TITLE

ELECTRICAL LIGHTING PLAN

SHEET NO.

E100