

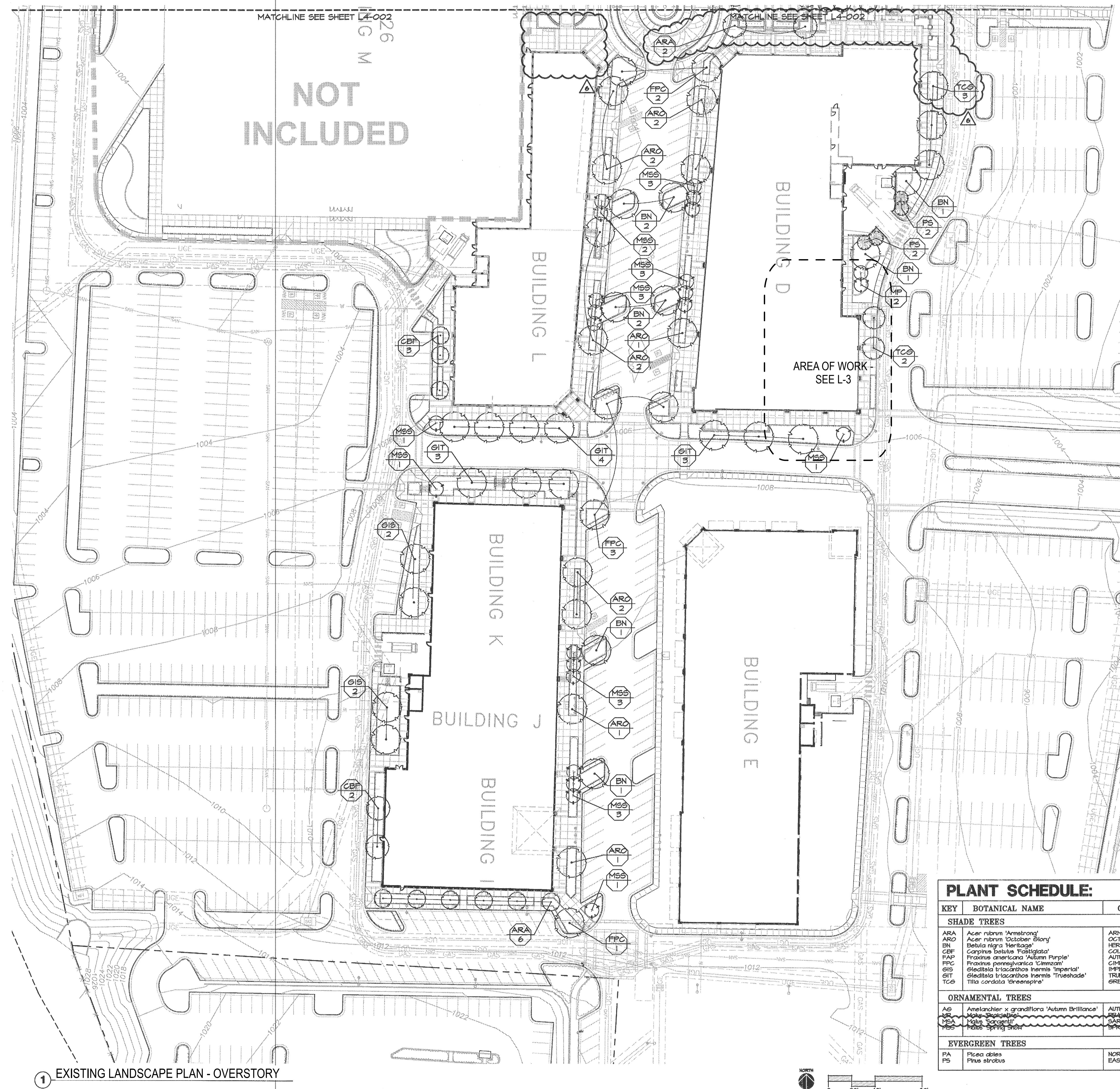
COPYRIGHT: CARR WARNER ARCHITECTS, LTD.
EXPRESSLY RESERVES ITS COMMON LAW COPYRIGHT
AND OTHER PROPERTY RIGHTS IN THESE PLANS. THESE
PLANS ARE NOT TO BE REPRODUCED, CHANGED OR
COPIED IN ANY FORM OR MANNER WHATSOEVER, NOR
ARE THEY TO BE ASSIGNED TO ANY THIRD PARTY.
WITHOUT FIRST OBTAINING THE EXPRESSED WRITTEN
PERMISSION AND CONSENT OF CARR WARNER
ARCHITECTS, LTD.

OWNER RELEASE: I HAVE REVIEWED THESE DRAWINGS
FOR DESIGN INTENT AND HEREBY CERTIFY THAT THEY
CONFORM IN ALL RESPECTS TO MY DESIGN CRITERIA
AND ARE APPROVED.

CONTRACTOR SHALL VERIFY ALL EXISTING CONDITIONS PRIOR TO PROCEEDING WITH CONSTRUCTION AND NOTIFY ARCHITECT IMMEDIATELY OF ANY DISCREPANCIES OR CONFLICTS.

NO	DATE	DESCRIPTION
	04.22.25	DEVELOPMENT PLAN

- 1 AREA TO BE SOODED WITH TURF-TYPE FESCUE SOD;
RE: SPECIFICATIONS.
- 2 LANDSCAPE PLANTING BED; RE: L4-010
- 3 STEEL EDGING; RE: 5/L4-010
- 4 STREET SIGN; BY OTHERS
- 5 ANNUAL PLANTINGS. ANNUAL BEDS TO BE PLANTED WITH FALL
SEASON ANNUALS TO INCLUDE: CALENDULA, GHRYSANTHEMUMS,
DIANTHUS AND PANSIES.
- 6 AREA TO BE SEEDED WITH TURF-TYPE FESCUE SOD
RE: SPECIFICATIONS



1 EXISTING LANDSCAPE PLAN - OVERSTORY

KEY	BOTANICAL NAME	COMMON NAME	SIZE	COND.	COMMENTS
SHADE TREES					
ARA	<i>Acer rubrum</i> 'Armstrong'	ARMSTRONG RED MAPLE	3' CAL.	B # B	N/A
ARA	<i>Acer rubrum</i> 'Guthrie Blue'	OCTOBER GLORY RED MAPLE	3' CAL.	B # B	N/A
BB	<i>Betula nigra</i> 'Heritage'	HERITAGE RIVER BIRCH	3' CAL.	B # B	N/A
CBP	<i>Cornus florida</i> 'Fastigata'	COLUMBIA CORNUS	3' CAL.	B # B	N/A
PAF	<i>Fraxinus americana</i> 'Autumn Purple'	AUTUMN PURPLE WHITE ASH	3' CAL.	B # B	N/A
PFC	<i>Fraxinus pennsylvanica</i> 'Clematis'	CLEMATIS GREEN ASH	3' CAL.	B # B	N/A
GB	<i>Gleditsia bicolor</i> 'Inermis Imperialis'	IMPERIAL HONEYLOCUST	3' CAL.	B # B	N/A
GT	<i>Gleditsia bicolor</i> 'Inermis Trushade'	TRUESHADE HONEYLOCUST	3' CAL.	B # B	N/A
TCG	<i>Tilia cordata</i> 'Greenspire'	GREENSPIRE LITTLELEAF LINDEN	3' CAL.	D # D	N/A
ORNAMENTAL TREES					
AG	<i>Amelanchier x grandiflora</i> 'Autumn Brilliance'	AUTUMN BRILLIANCE SERVICEBERRY	3' CAL.	B # B	CLUMP
AG	<i>Amelanchier x grandiflora</i> 'Autumn Sprinkles'	AUTUMN SPRINKLES SERVICEBERRY	3' CAL.	B # B	CLUMP
AG	<i>Amelanchier x grandiflora</i> 'Autumn Purple'	AUTUMN PURPLE SERVICEBERRY	3' CAL.	B # B	CLUMP
AG	<i>Amelanchier x grandiflora</i> 'Autumn Sprig Soft'	AUTUMN SPRIG SERVICEBERRY	3' CAL.	B # B	CLUMP
EVERGREEN TREES					
PA	<i>Pinus strobus</i>	NORWAY SPRUCE	8' HT. MIN. B # HT. MIN.	B # B	N/A
PA	<i>Pinus strobus</i>	EASTERN WHITE PINE		B # B	N/A

CERTIFICATION:
STATE OF MISSOURI
WILLIAM D. WARNER
NUMBER A-2025012951
ARCHITECT

ANCHOR
&
AGAVE

SUMMIT FAIR SHOPPING CENTER
D-BUILDING
860-A NW BLUE PARKWAY
LEE'S SUMMIT, MO 64086

ARCHITECTS
ARCHITECTURE
INTERIORS
PLANNING

CARR 3711 N. Ravenswood
Suite 104
Chicago Illinois 60613
p 773 477 9009
f 773 477 6888
www.carrwarner.com

EXISTING LANDSCAPE
PLAN

JOB NO:
ANCHO -
SUMMIT FAIR

SHEET NO:
1-1

COPYRIGHT: CARR WARNER ARCHITECTS, LTD.
EXPLICITLY RESERVES ITS COMMON LAW COPYRIGHT
AND OTHER PROPERTY RIGHTS IN THESE PLANS. THESE
PLANS ARE NOT TO BE REPRODUCED, CHANGED OR
COPIED IN ANY FORM OR MANNER WHATSOEVER, NOR
ARE THEY TO BE ASSIGNED TO ANY THIRD PARTY,
WITHOUT FIRST OBTAINING THE WRITTEN
PERMISSION AND CONSENT OF CARR WARNER
ARCHITECTS, LTD.
OWNER RELEASE: I HAVE REVIEWED THESE DRAWINGS
FOR DESIGN INTENT AND HEREIN CERTIFY THAT THEY
CONFORM IN ALL RESPECTS TO MY DESIGN CRITERIA
AND ARE APPROVED.
BY: DATE:

THESE DRAWINGS MAY HAVE BEEN REPRODUCED AT A
SIZE DIFFERENT THAN ORIGINALLY DRAWN. OWNER
AND ARCHITECT ASSUME NO RESPONSIBILITY FOR USE
OF INCORRECT SCALE.

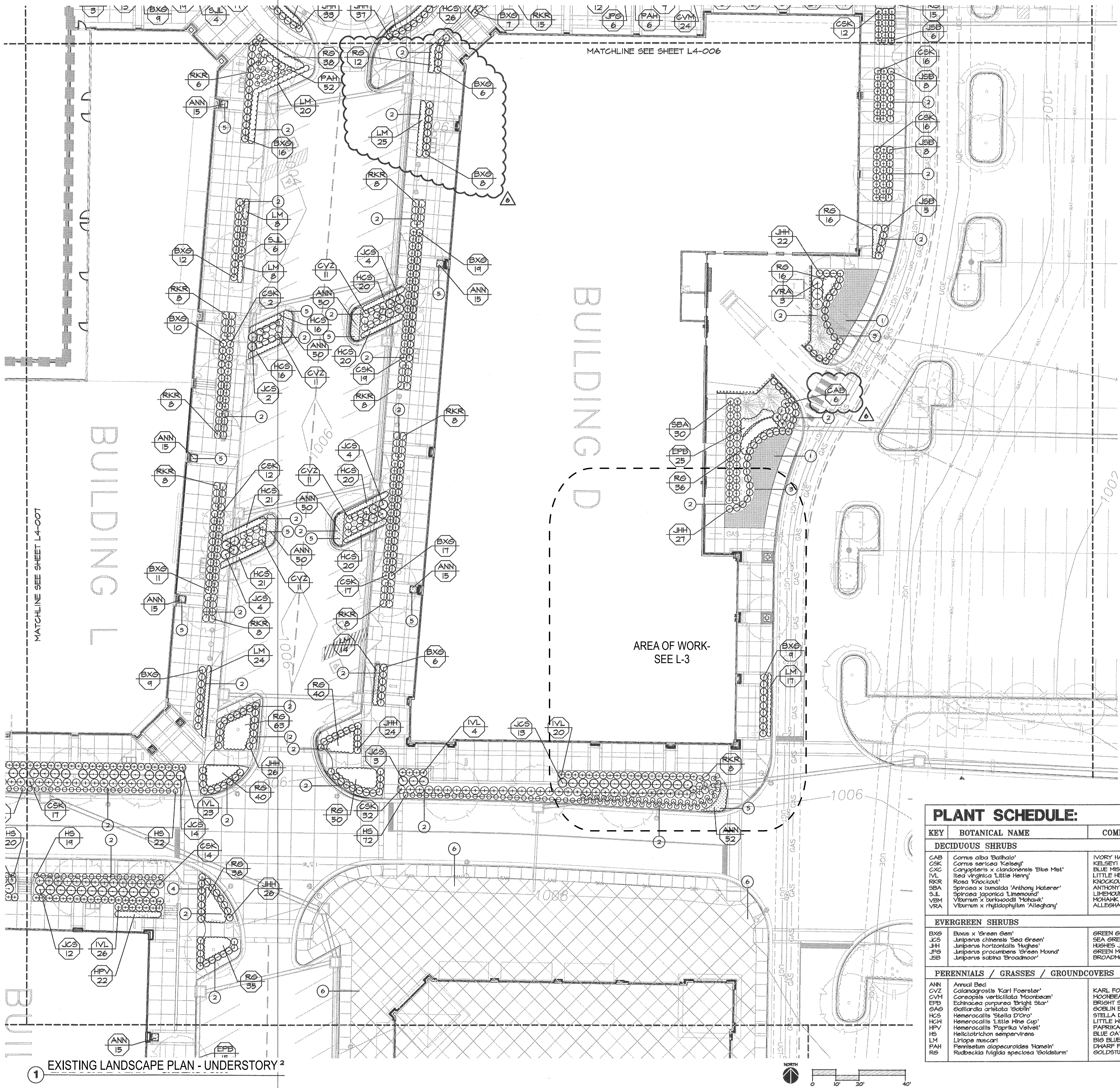
DO NOT SCALE DRAWINGS

CONTRACTOR SHALL VERIFY ALL EXISTING CONDITIONS
PRIOR TO PROCEEDING WITH CONSTRUCTION AND
NOTIFY ARCHITECT IMMEDIATELY OF ANY DISCREPANCIES
OR CONFLICTS.

NO	DATE	DESCRIPTION
	04.22.25	DEVELOPMENT PLAN

PLAN NOTES:

- AREA TO BE SEEDDED WITH TURF-TYPE FESCUE SOD;
RE: SPECIFICATIONS.
- LANDSCAPE PLANTING BED; RE: L4-010
- STEEL EDGING; RE: 5/L4-010
- STREET SIGN; BY OTHERS
- ANNUAL PLANTINGS: ANNUAL BEDS TO BE PLANTED WITH FALL
SEASON ANNUALS TO INCLUDE: CALENDULA, CHRYSANTHEMUMS,
DIANTHUS AND PANSIES.
- AREA TO BE SEEDDED WITH TURF-TYPE FESCUE SOD
RE: SPECIFICATIONS



PLANT SCHEDULE:

KEY	BOTANICAL NAME	COMMON NAME	SIZE	COND.	COMMENTS
DECIDUOUS SHRUBS					
CAB	Cornus alba 'Boothale'	MORY HALO REDDING DOGWOOD	5 GAL.	CONT.	N/A
CSK	Cornus sericea 'Kelsey'	REBEL REDDING DOGWOOD	3 GAL.	CONT.	N/A
CXC	Caryopteris x clandonensis 'Blue Mist'	BLUE MIST SPIREA	3 GAL.	CONT.	N/A
IVL	Ilex 'Virginia Little Henry'	LITTLE HENRY SWEETSPICE	5 GAL.	CONT.	N/A
RKR	Rosa 'Knockout'	KNOCKOUT SHRUB ROSE	3 GAL.	CONT.	N/A
SBA	Spiraea x 'Amalida Anthony Materer'	ANTHONY MATERER SPIREA	3 GAL.	CONT.	N/A
S.L.	Spiraea japonica 'Limelight'	LIMELIGHT SPIREA	3 GAL.	CONT.	N/A
VBM	Viburnum x 'barkwoodii 'Hokusei'	HOKUSEI VIBURNUM	5 GAL.	CONT.	N/A
VRA	Viburnum x 'hybridophyllum 'Alegany'	ALEGANY LEATHERLEAF VIBURNUM	5 GAL.	CONT.	N/A
EVERGREEN SHRUBS					
BWS	Buxus x 'Green Gem'	GREEN GEM BOXWOOD	5 GAL.	CONT.	N/A
JCS	Juniperus chinensis 'Sea Green'	SEA GREEN JUNIPER	5 GAL.	CONT.	N/A
JHH	Juniperus horizontalis 'Hughes'	HUGHES JUNIPER	3 GAL.	CONT.	N/A
JFS	Juniperus procumbens 'Green Mound'	GREEN MOUND JUNIPER	3 GAL.	CONT.	N/A
ESB	Juniperus sibirica 'Broadmoor'	BROADMOOR JUNIPER	3 GAL.	CONT.	N/A
PERENNIALS / GRASSES / GROUNDCOVERS					
ANN	Annual Bed	KARL FOERSTER FEATHER REED	1 GAL.	CONT.	N/A
CVZ	Calliopsis verticillata 'Karl Foerster'	MOONBEAM COREOPSIS	1 GAL.	CONT.	N/A
CVM	Coreopsis verticillata 'Moonbeam'	MOONBEAM COREOPSIS	1 GAL.	CONT.	N/A
EPB	Echinacea purpurea 'Bright Star'	BRIGHT STAR COREFLOWER	1 GAL.	CONT.	N/A
GAB	Gobelinia 'Gobelin'	GOBELIN BLANKET FLOWER	1 GAL.	CONT.	N/A
HCS	Hemerocallis 'Stella D'Oro'	STELLA D'ORO DAYLILY	1 GAL.	CONT.	N/A
HCH	Hemerocallis 'Little Lime Cup'	LITTLE LIME CUP DAYLILY	1 GAL.	CONT.	N/A
HPV	Hemerocallis 'Paprika Velvet'	PAPRIKA VELVET DAYLILY	1 GAL.	CONT.	N/A
HS	Helianthus scaberrimus	BLUE OAT GRASS	1 GAL.	CONT.	N/A
LM	Liriodendron muscari	BIG BLUE LIRIOPE	1 GAL.	CONT.	N/A
PAH	Peristemon alpestris 'Hansel'	DWARF FOUNTAIN GRASS	1 GAL.	CONT.	N/A
RS	Rudbeckia hirta 'Speciosa 'Goldsturm'	GOLDSTURM BLACK-EYED SUSAN	1 GAL.	CONT.	N/A

CERTIFICATION:
STATE OF MISSOURI
WILLIAM D. WARNER
NUMBER A-2025012951
ARCHITECT

ANCHO
&
AGAVE

SUMMIT FAIR SHOPPING CENTER
D-BUILDING
860 ANN BLUE PARKWAY
LEE'S SUMMIT, MO 64086

ARCHITECTS
ARCHITECTURE
INTERIORS
PLANNING

3711 N. Ravenswood
Suite 104
Chicago Illinois 60613
p 773.477.9009
1773.477.6888
www.carrwarner.com

EXISTING LANDSCAPE
UNDERSTORY

JOB NO:
ANCHO -
SUMMIT FAIR
DATE:
04.22.2025

SHEET NO:
L-2

COPYRIGHT: CARR WARNER ARCHITECTS, LTD.
EXPRESSLY RESERVES ITS COMMON LAW COPYRIGHT
AND OTHER PROPERTY RIGHTS IN THESE PLANS. THESE
PLANS ARE NOT TO BE REPRODUCED, CHANGED OR
COPIED IN ANY FORM OR MANNER WHATSOEVER, NOR
ARE THEY TO BE ASSIGNED TO ANY THIRD PARTY,
WITHOUT FIRST OBTAINING THE EXPRESSED WRITTEN
PERMISSION AND CONSENT OF CARR WARNER
ARCHITECTS, LTD.

OWNER RELEASE: I HAVE REVIEWED THESE DRAWINGS FOR DESIGN INTENT AND HEREBY CERTIFY THAT THEY CONFORM IN ALL RESPECTS TO MY DESIGN CRITERIA AND ARE APPROVED.

BY _____ DATE _____

THESE DRAWINGS MAY HAVE BEEN REPRODUCED AT A SIZE DIFFERENTLY THAN ORIGINALLY DRAWN. OWNER AND ARCHITECT ASSUME NO RESPONSIBILITY FOR USE OF INCORRECT SCALE.

DO NOT SCALE DRAWINGS

CONTRACTOR SHALL VERIFY ALL EXISTING CONDITIONS PRIOR TO PROCEEDING WITH CONSTRUCTION AND NOTIFY ARCHITECT IMMEDIATELY OF ANY DISCREPANCIES OR CONFLICTS.

NO	DATE	DESCRIPTION
	04.22.25	DEVELOPMENT PLAN

--

C E R T I F I C A T I O N :
STATE OF MISSOURI
WILLIAM D. WARNER
NUMBER A-2025012951
ARCHITECT

**ANCHO
&
AGAVE**

SUMMIT FAIR SHOPPING CENTER
D-BUILDING
860-A NW BLUE PARKWAY
LEE'S SUMMIT, MO 64086

CARR WARNER

ARCHITECTS

ARCHITECTURE
INTERIORS
PLANNING

3711 N. Ravenswood
Suite 104
Chicago Illinois 60613
p 773 477 9009
f 773 477 6888
www.carrwarner.com

<h1 style="text-align: center;">LANDSCAPE PLAN</h1>	
JOB NO: ANCHO - SUMMIT FAIR DATE: 04.22.2025	SHEET NO: <div style="font-size: 2em; font-weight: bold; text-align: center;">L-3</div>

