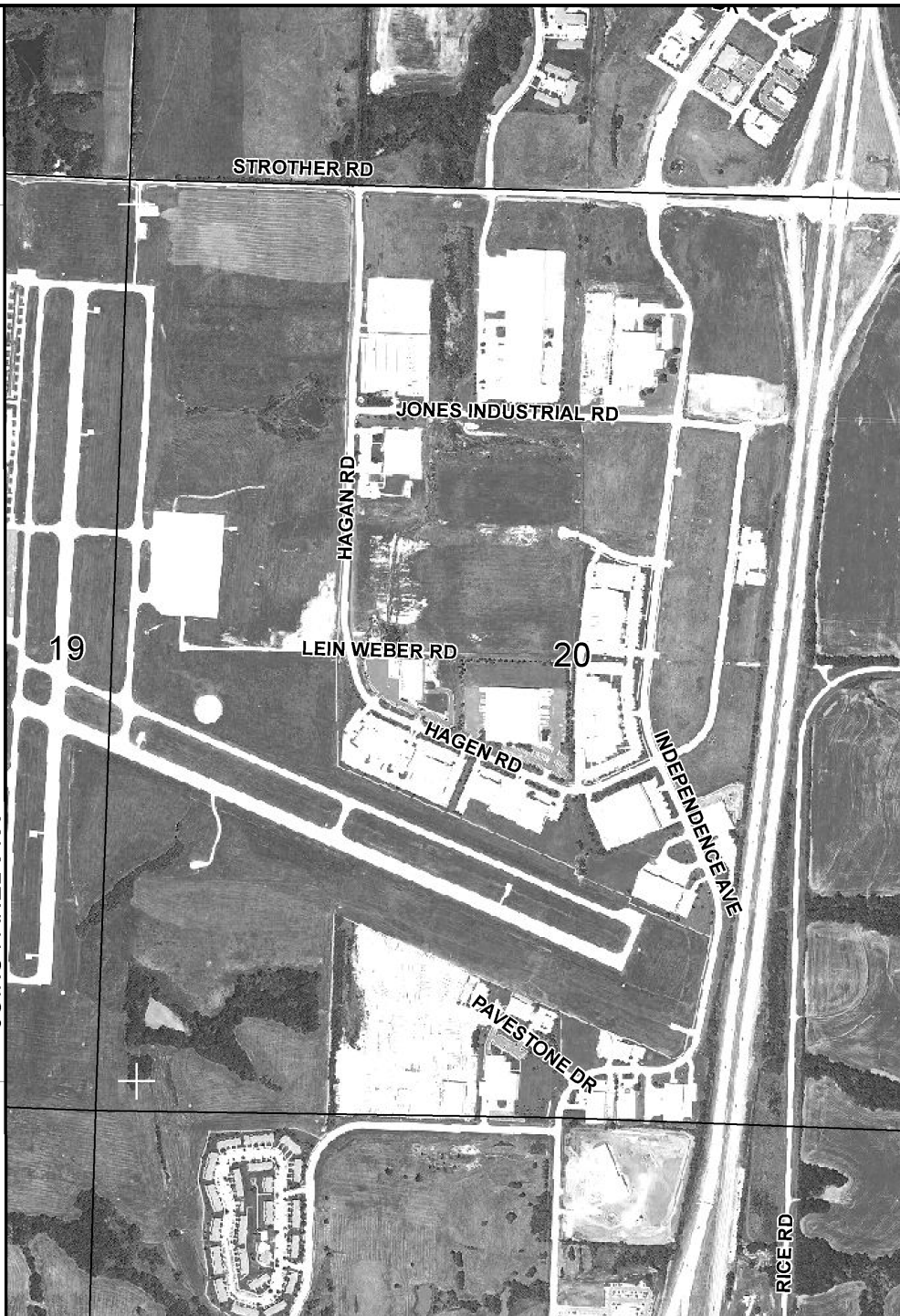


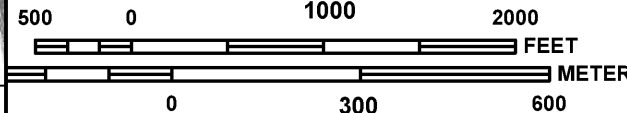
1020000 FT

1015000 FT

JOINS PANEL 0409



MAP SCALE 1" = 1000'



NATIONAL FLOOD INSURANCE PROGRAM

PANEL 0430G

FIRM

**FLOOD INSURANCE RATE MAP
JACKSON COUNTY,
MISSOURI
AND INCORPORATED AREAS**

PANEL 430 OF 625
(SEE MAP INDEX FOR FIRM PANEL LAYOUT)

CONTAINS:

COMMUNITY	NUMBER	PANEL	SUFFIX
JACKSON COUNTY	290492	0430	G
LEE'S SUMMIT, CITY OF	290174	0430	G

Notice to User: The **Map Number** shown below should be used when placing map orders; the **Community Number** shown above should be used on insurance applications for the subject community.



**MAP NUMBER
29095C0430G**

**MAP REVISED
JANUARY 20, 2017**

Federal Emergency Management Agency

This is an official FIRMette showing a portion of the above-referenced flood map created from the MSC FIRMette Web tool. This map does not reflect changes or amendments which may have been made subsequent to the date on the title block. For additional information about how to make sure the map is current, please see the Flood Hazard Mapping Updates Overview Fact Sheet available on the FEMA Flood Map Service Center home page at <https://msc.fema.gov>.