

- 7125-197 LIGHT NAVY
- MP 18076 BRUSHED ALUMINUM

All noted dimensions are approximate and may be modified slightly during manufacturing to allow proper component usage.

SPECIFICATIONS:

- PRODUCE AND INSTALL (1) RACEWAY/WIREWAY MOUNTED INTERNALLY ILLUMINATED "A"
- "A" - WHITE ACRYLIC FACE OVERLAID WITH 7125-197 LIGHT NAVY, WITH BRUSHED ALUMINUM TRIM CAP AND MP 18076 BRUSHED ALUMINUM RETURNS
- ILLUMINATES WITH WHITE LEDS
- CUSTOMER TO PROVIDE POWER TO SIGN LOCATION
- SURVEY REQUESTED FOR RACEWAY COLOR MATCH

CUSTOMER: SAINT LUKE'S EAST HOSPITAL
NAME: ANDY AMOR
LOCATION: 100 NE ST LUKES BLVD
LEE'S SUMMIT, MO 64086

DATE: 10/29/24
DESIGN NO: QT-J29006
ARTIST: JH

SCALE: 1/2" = 1'

APPROVED:

DATE:



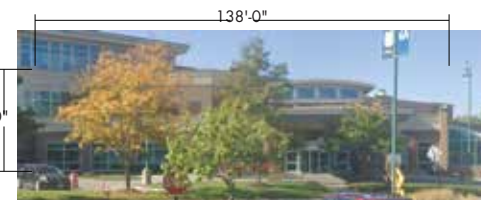
LUMINOUSNeon Inc
ART & SIGN SYSTEMS



138'-0"



34'-0"



34'-0"

PROPOSED NTS



2'-0"

7125-197 LIGHT NAVY

MP 18076 BRUSHED ALUMINUM

All noted dimensions are approximate and may be modified slightly during manufacturing to allow proper component usage.

SPECIFICATIONS:

- PRODUCE AND INSTALL (1) RACEWAY/WIREWAY MOUNTED INTERNALLY ILLUMINATED "B"
- "B" - WHITE ACRYLIC FACE OVERLAID WITH 7125-197 LIGHT NAVY, WITH BRUSHED ALUMINUM TRIM CAP AND MP 18076 BRUSHED ALUMINUM RETURNS
- ILLUMINATES WITH WHITE LEDS
- CUSTOMER TO PROVIDE POWER TO SIGN LOCATION
- SURVEY REQUESTED FOR RACEWAY COLOR MATCH AND DETERMINE DEPTH

CUSTOMER: SAINT LUKE'S EAST HOSPITAL
NAME: ANDY AMOR
LOCATION: 100 NE ST LUKES BLVD
LEE'S SUMMIT, MO 64086

DATE: 10/29/24
DESIGN NO: QT-J29006
ARTIST: JH

SCALE: 1/2" = 1'

APPROVED:

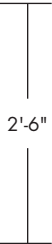
DATE:



LUMINOUSNeonInc
ART & SIGN SYSTEMS



PROPOSED



3630-43 TOMATO RED



MP 18076 BRUSHED ALUMINUM

All noted dimensions are approximate and may be modified slightly during manufacturing to allow proper component usage.

SPECIFICATIONS:

- PRODUCE AND INSTALL (1) RACEWAY MOUNTED INTERNALLY ILLUMINATED PAN CHANNEL "C"
- "C" - WHITE ACRYLIC FACE OVERLAID WITH 3630-43 TOMATO RED, WITH BRUSHED ALUMINUM TRIM CAP AND MP 18076 BRUSHED ALUMINUM RETURNS
- ILLUMINATES WITH WHITE LEDS
- CUSTOMER TO PROVIDE POWER TO SIGN LOCATION
- SURVEY REQUESTED FOR RACEWAY COLOR MATCH

CUSTOMER: SAINT LUKE'S EAST HOSPITAL
NAME: ANDY AMOR
LOCATION: 100 NE ST LUKES BLVD
LEE'S SUMMIT, MO 64086

DATE: 10/29/24
DESIGN NO: QT-J29006
ARTIST: JH

SCALE: 1/2" = 1'

APPROVED:

DATE:



LUMINOUSNeonInc
ART & SIGN SYSTEMS



PROPOSED



PROPOSED



3630-43 TOMATO RED



MP 18076 BRUSHED ALUMINUM

All noted dimensions are approximate and may be modified slightly during manufacturing to allow proper component usage.

SPECIFICATIONS:

- PRODUCE AND INSTALL (2) RACEWAY MOUNTED INTERNALLY ILLUMINATED "EMERGENCY" CABINETS
- "EMERGENCY" - WHITE ACRYLIC FACE OVERLAID WITH 3630-43 TOMATO RED, WITH BRUSHED ALUMINUM TRIM CAP AND MP 18076 BRUSHED ALUMINUM RETURNS
- ILLUMINATES WITH WHITE LEDS
- CUSTOMER TO PROVIDE POWER TO SIGN LOCATION
- SURVEY REQUESTED FOR RACEWAY COLOR MATCH**

CUSTOMER: SAINT LUKE'S EAST HOSPITAL
NAME: ANDY AMOR
LOCATION: 100 NE ST LUKES BLVD
LEE'S SUMMIT, MO 64086

DATE: 10/29/24
DESIGN NO: QT-J29006
ARTIST: JH
SCALE: 1/2" = 1'
SCALE: 1/8" = 1'

APPROVED:

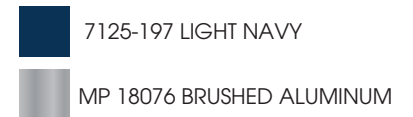
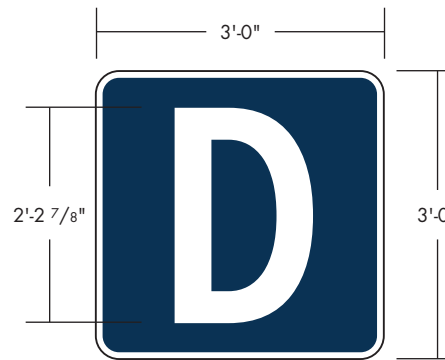
DATE:



LUMINOUSNeonInc
ART & SIGN SYSTEMS



PROPOSED



All noted dimensions are approximate and may be modified slightly during manufacturing to allow proper component usage.

SPECIFICATIONS:

- PRODUCE AND INSTALL (1) RACEWAY MOUNTED INTERNALLY ILLUMINATED CHANNEL
- "D" - WHITE ACRYLIC FACE OVERLAID WITH 7125-197 LIGHT NAVY, WITH BRUSHED ALUMINUM TRIM CAP AND MP 18076 BRUSHED ALUMINUM RETURNS
- ILLUMINATES WITH WHITE LEDS
- CUSTOMER TO PROVIDE POWER TO SIGN LOCATION
- SURVEY REQUESTED FOR RACEWAY COLOR MATCH

CUSTOMER: SAINT LUKE'S EAST HOSPITAL
NAME: ANDY AMOR
LOCATION: 100 NE ST LUKES BLVD
 LEE'S SUMMIT, MO 64086

DATE: 10/29/24
DESIGN NO: QT-J29006
ARTIST: JH
SCALE: 1/2" = 1'
SCALE: 1/16" = 1'

APPROVED:

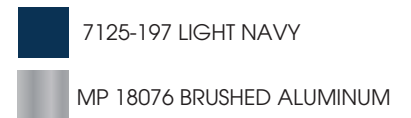
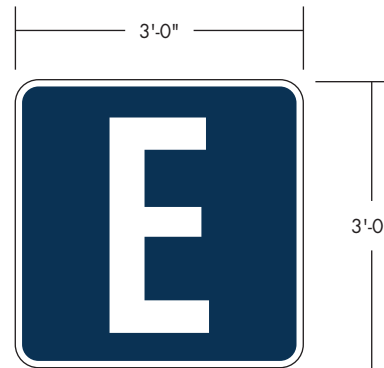
DATE:



LUMINOUSNeonInc
 ART & SIGN SYSTEMS



PROPOSED



All noted dimensions are approximate and may be modified slightly during manufacturing to allow proper component usage.

SPECIFICATIONS:

- PRODUCE AND INSTALL (1) RACEWAY/WIREWAY MOUNTED INTERNALLY ILLUMINATED "E"
- "E" - WHITE ACRYLIC FACE OVERLAID WITH 7125-197 LIGHT NAVY, WITH BRUSHED ALUMINUM TRIM CAP AND MP 18076 BRUSHED ALUMINUM RETURNS
- ILLUMINATES WITH WHITE LEDS
- CUSTOMER TO PROVIDE POWER TO SIGN LOCATION
- SURVEY REQUESTED FOR RACEWAY COLOR MATCH AND CANOPY OAH/BUMPOUT

CUSTOMER: SAINT LUKE'S EAST HOSPITAL
NAME: ANDY AMOR
LOCATION: 100 NE ST LUKES BLVD
LEE'S SUMMIT, MO 64086

DATE: 10/29/24
DESIGN NO: QT-J29006
ARTIST: JH

SCALE: 1/2" = 1'

APPROVED:

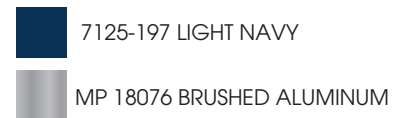
DATE:



LUMINOUS Neon Inc
ART & SIGN SYSTEMS



PROPOSED - INDEPENDENT PHYSICIAN PRACTICE ENTRANCE



All noted dimensions are approximate and may be modified slightly during manufacturing to allow proper component usage.

SPECIFICATIONS:

- PRODUCE AND INSTALL (1) RACEWAY/WIREWAY MOUNTED INTERNALLY ILLUMINATED "F"
- "F" - WHITE ACRYLIC FACE OVERLAID WITH 7125-197 LIGHT NAVY, WITH BRUSHED ALUMINUM TRIM CAP AND MP 18076 BRUSHED ALUMINUM RETURNS
- ILLUMINATES WITH WHITE LEDS
- CUSTOMER TO PROVIDE POWER TO SIGN LOCATION
- SURVEY REQUESTED FOR RACEWAY COLOR MATCH AND CANOPY OAH/BUMPOUT

CUSTOMER: SAINT LUKE'S EAST HOSPITAL
NAME: ANDY AMOR
LOCATION: 100 NE ST LUKES BLVD
 LEE'S SUMMIT, MO 64086

DATE: 10/29/24
DESIGN NO: QT-J29006
ARTIST: JH

SCALE: 1/2" = 1'

APPROVED:

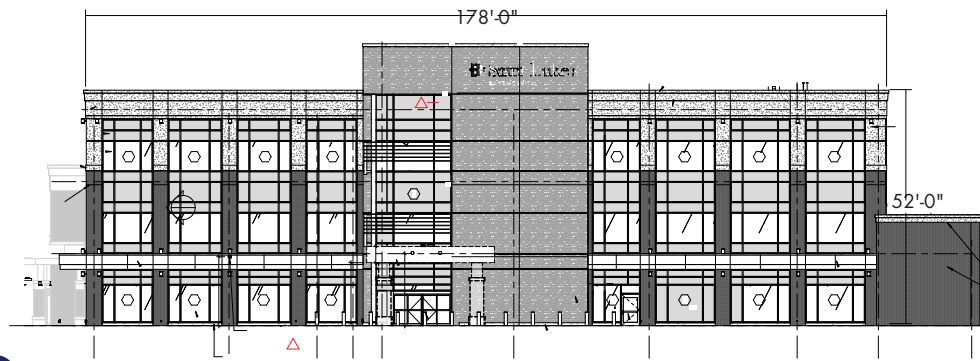
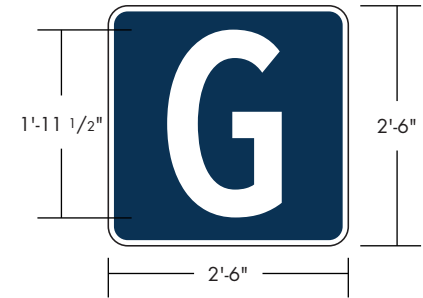
DATE:



LUMINOUS Neon Inc
 ART & SIGN SYSTEMS



PROPOSED



- 7125-197 LIGHT NAVY
- MP 18076 BRUSHED ALUMINUM



CUSTOMER: SAINT LUKE'S EAST HOSPITAL
NAME: ANDY AMOR
LOCATION: 100 NE ST LUKES BLVD
LEE'S SUMMIT, MO 64086

DATE: 1/14/25
DESIGN NO: QT-J29006
ARTIST: JH
SCALE: 1/2" = 1'

APPROVED:

DATE:

SPECIFICATIONS

***NOTE: INCREASE SIZE FROM 24" TO 30" WITH CANOPY COMPLETION**

- PRODUCE AND INSTALL (1) FLUSH MOUNTED INTERNALLY ILLUMINATED "G"
- "G" - WHITE ACRYLIC FACE OVERLAID WITH 7125-197 LIGHT NAVY, WITH BRUSHED ALUMINUM TRIM CAP AND MP 18076 BRUSHED ALUMINUM RETURNS
- ILLUMINATES WITH WHITE LEDS
- CUSTOMER TO PROVIDE POWER TO SIGN LOCATION

ALL NOTED DIMENSIONS ARE APPROXIMATE AND MAY BE MODIFIED SLIGHTLY DURING MANUFACTURING TO ALLOW PROPER COMPONENT USAGE.

© 2025 LUMINOUS NEON, LLC. This design is the property of LUMINOUS NEON, LLC. Rights are transferred to the customer upon completion of order. This design is not to be used in whole or in part without the written permission of the company. The PANTONE (PMS) and/or vinyl colors shown on printed document are a four-color process simulation and may not match PANTONE and vinyl identified spot color standards. Use a PANTONE Color Reference Manual or vinyl swatch book for accurate display of colors.



PROPOSED - CURRENT NMP, NEW MOB3



7125-197 LIGHT NAVY
MP 18076 BRUSHED ALUMINUM



CUSTOMER: SAINT LUKE'S EAST HOSPITAL
NAME: ANDY AMOR
LOCATION: 100 NE ST LUKES BLVD
LEE'S SUMMIT, MO 64086

DATE: 1/14/25
DESIGN NO: QT-J29006
ARTIST: JH
SCALE: 1/2" = 1'

APPROVED: **DATE:**

SPECIFICATIONS

***NOTE: REPLACES PROPOSED 5'-0" WALL SIGN**

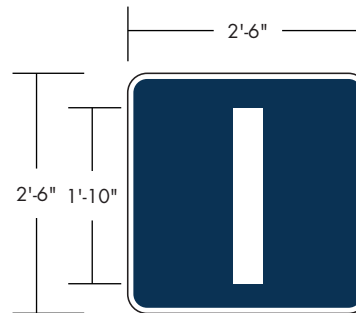
- PRODUCE AND INSTALL (1) INTERNALLY-ILLUMINATED, DOUBLE-FACED FLAG MOUNTED "H" SIGN
- "H" - WHITE ACRYLIC FACE OVERLAID WITH 7125-197 LIGHT NAVY, WITH BRUSHED ALUMINUM TRIM CAP AND MP 18076 BRUSHED ALUMINUM RETURNS
- ILLUMINATES WITH WHITE LEDS
- SQUARE TUBE ARM AND MOUNTING PLATED PAINTED BRUSHED ALUMINUM
- CUSTOMER TO PROVIDE POWER TO SIGN LOCATION

ALL NOTED DIMENSIONS ARE APPROXIMATE AND MAY BE MODIFIED SLIGHTLY DURING MANUFACTURING TO ALLOW PROPER COMPONENT USAGE.

© 2025 LUMINOUS NEON, LLC. This design is the property of LUMINOUS NEON, LLC. Rights are transferred to the customer upon completion of order. This design is not to be used in whole or in part without the written permission of the company. The PANTONE (PMS) and/or vinyl colors shown on printed document are a four-color process simulation and may not match PANTONE and vinyl identified spot color standards. Use a PANTONE Color Reference Manual or vinyl swatch book for accurate display of colors.



PROPOSED



- 7125-197 LIGHT NAVY
- MP 18076 BRUSHED ALUMINUM



CUSTOMER: SAINT LUKE'S EAST HOSPITAL
NAME: ANDY AMOR
LOCATION: 100 NE ST LUKES BLVD
 LEE'S SUMMIT, MO 64086

DATE: 1/14/25
DESIGN NO: QT-J29006
ARTIST: JH
SCALE: 1/2" = 1'
 1/16" - 1'-0"

APPROVED: **DATE:**

SPECIFICATIONS

***NOTE: INCREASE SIZE FROM 24" TO 30" WITH CANOPY COMPLETION**

- PRODUCE AND INSTALL (1) FLUSH MOUNTED INTERNALLY ILLUMINATED "I" CABINET
- "I" - WHITE ACRYLIC FACE OVERLAID WITH 7125-197 LIGHT NAVY, WITH BRUSHED ALUMINUM TRIM CAP AND MP 18076 BRUSHED ALUMINUM RETURNS
- ILLUMINATES WITH WHITE LEDS
- CUSTOMER TO PROVIDE POWER TO SIGN LOCATION

ALL NOTED DIMENSIONS ARE APPROXIMATE AND MAY BE MODIFIED SLIGHTLY DURING MANUFACTURING TO ALLOW PROPER COMPONENT USAGE.

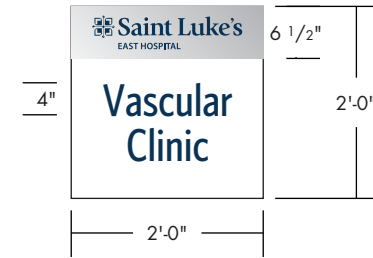
© 2025 LUMINOUS NEON, LLC. This design is the property of LUMINOUS NEON, LLC. Rights are transferred to the customer upon completion of order. This design is not to be used in whole or in part without the written permission of the company. The PANTONE (PMS) and/or vinyl colors shown on printed document are a four-color process simulation and may not match PANTONE and vinyl identified spot color standards. Use a PANTONE Color Reference Manual or vinyl swatch book for accurate display of colors.



PROPOSED



EXISTING



CUSTOMER: SAINT LUKE'S EAST HOSPITAL
NAME: ANDY AMOR
LOCATION: 100 NE ST LUKES BLVD
 LEE'S SUMMIT, MO 64086

DATE: 1/14/25
DESIGN NO: QT-J29006
ARTIST: JH
SCALE: 1/2" = 1'

APPROVED:

DATE:

SPECIFICATIONS

- PRODUCE AND INSTALL (2) PANELS FOR EXISTING NON-ILLUMINATED, DOUBLE-SIDED FLAG MOUNTED SIGN
- WHITE ALUMINUM PANELS OVERLAID WITH 7125-120 SATIN ALUMINUM AND 7125-197 LIGHT NAVY FACES SCREW TO EXISTING FRAMEWORK

7125-197 LIGHT NAVY

7125-120 SATIN ALUMINUM

ALL NOTED DIMENSIONS ARE APPROXIMATE AND MAY BE MODIFIED SLIGHTLY DURING MANUFACTURING TO ALLOW PROPER COMPONENT USAGE.

© 2025 LUMINOUS NEON, LLC. This design is the property of LUMINOUS NEON, LLC. Rights are transferred to the customer upon completion of order. This design is not to be used in whole or in part without the written permission of the company. The PANTONE (PMS) and/or vinyl colors shown on printed document are a four-color process simulation and may not match PANTONE and vinyl identified spot color standards. Use a PANTONE Color Reference Manual or vinyl swatch book for accurate display of colors.