



# COBEY CREEK CLUBHOUSE

COBEY CREEK 2ND PLAT - S29, T47N, R31W  
LEE'S SUMMIT, MISSOURI

FINAL DEVELOPMENT PLAN-REVISION: FEBRUARY 28, 2025

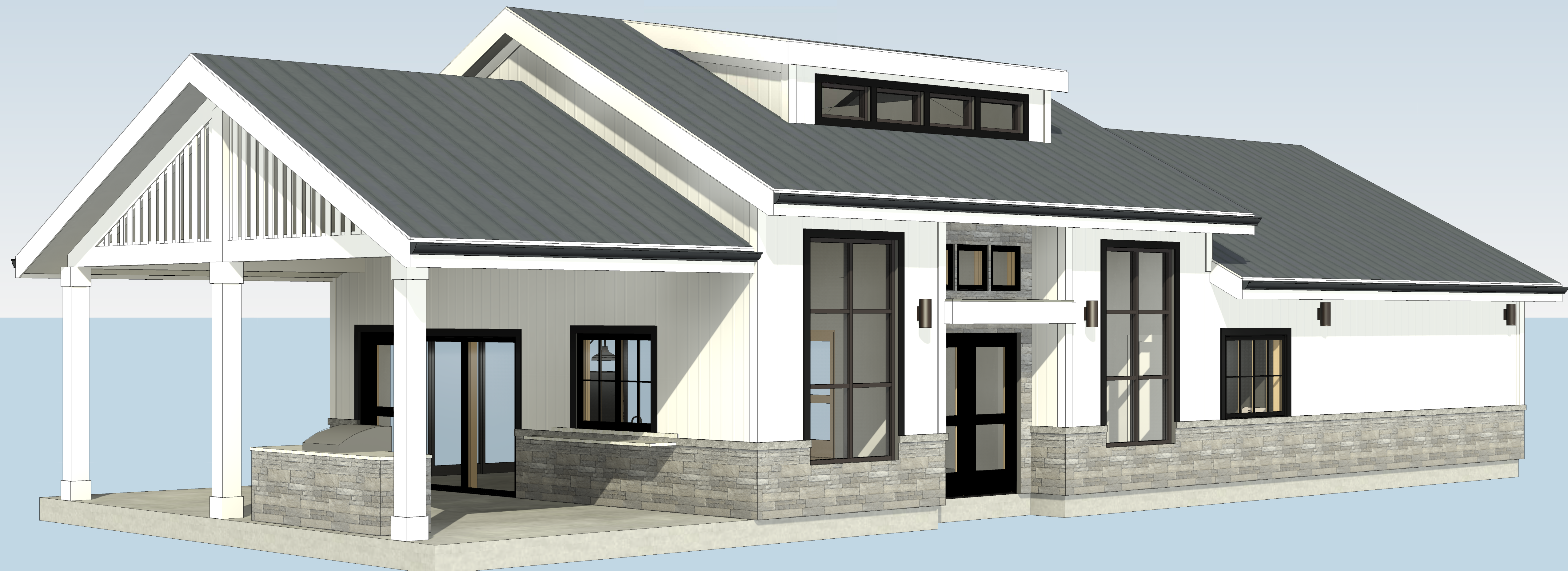


ARCHITECT  
B+A ARCHITECTURE  
600 BROADWAY BLVD, SUITE 290  
KANSAS CITY, MO 64105  
PH: 816-753-6100

CIVIL ENGINEER  
OWN, INC  
8455 COLLEGE BLVD.  
OVERLAND PARK, KS 66210  
PH: 816-777-0400

## INDEX

A100	FLOOR PLAN
A200	ELEVATIONS
A201	ELEVATIONS
EL-1	EXT. LIGHTING PLAN



GENERAL NOTES

1. ALL PLAN DIMENSIONS GIVEN ARE TO FACE OF STUD OR MASONRY, U.N.O.
2. FOR ACTUAL FINISH FLOOR ELEVATION RE: CIVIL DWGS
3. REFER TO STRUCTURAL DRAWINGS FOR FRAMING INFORMATION
4. ALL DOOR OPENINGS TO BE LOCATED 4" FROM NEAREST WALL CORNER, U.N.O.
5. SEE FINISH SCHEDULE ON SHEET A000 FOR MATERIAL INFORMATION
6. SEE DOOR/WINDOW SCHEDULE ON SHEET A600
7. SEE SHEET A400 FOR ENLARGED FLOOR PLANS

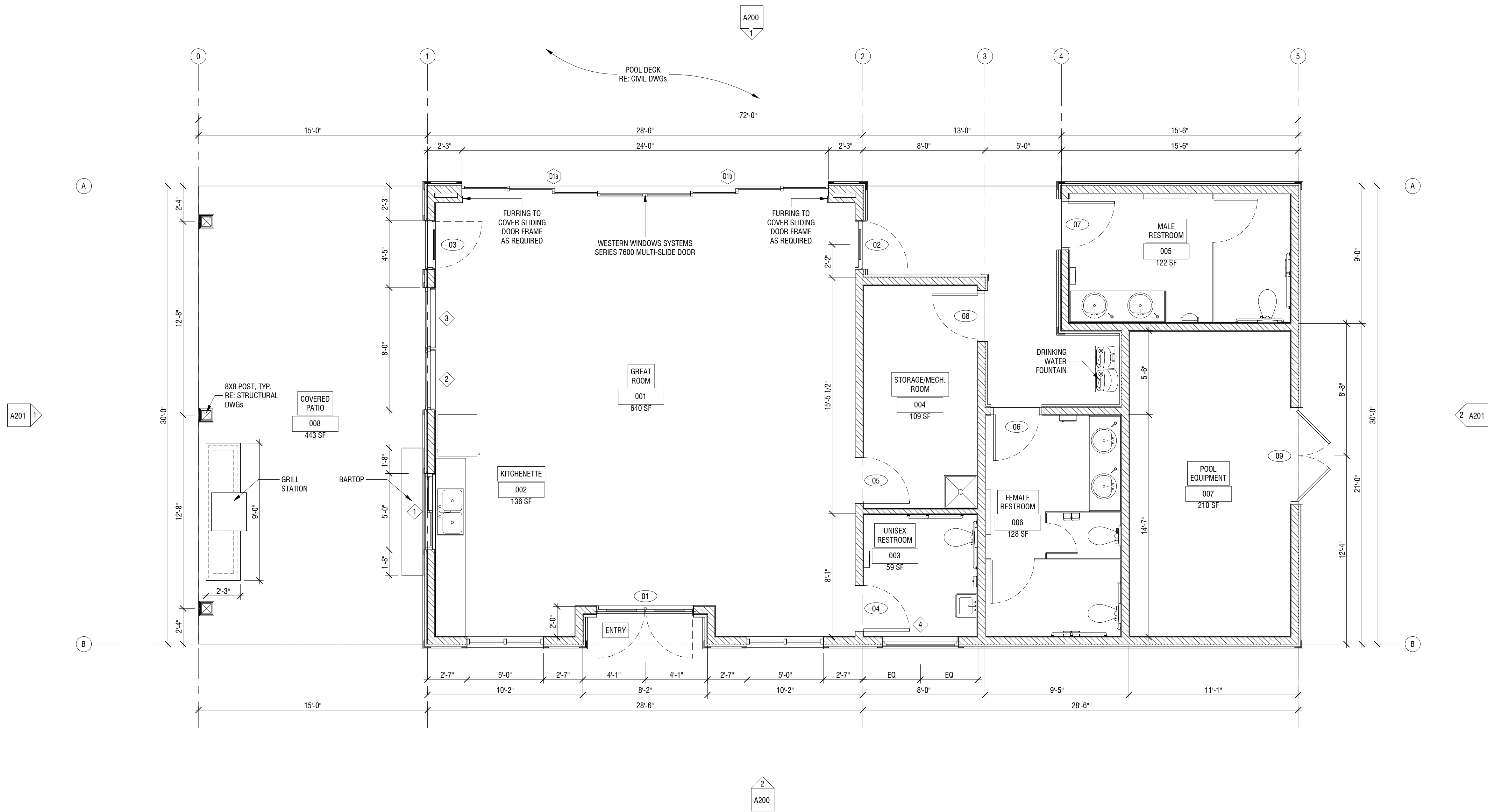
WALL TYPES

- E1** EXTERIOR WALL, 2X6 WOOD STUD, BOARD & BATTEN FINISH, INSULATED  
RE: DETAIL 1 / A002

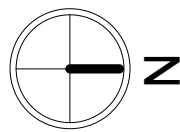
**E2** EXTERIOR WALL, 2X6 WOOD STUD, STONE VENEER FINISH, INSULATED  
RE: DETAIL 2 / A002
- P1** TYPICAL INTERIOR WALL, 2X4 WOOD STUD, GYP. BOARD FINISH  
RE: DETAIL 3 / A002

**P2** TYPICAL INTERIOR WALL, 2X6 WOOD STUD, GYP. BOARD FINISH  
RE: DETAIL 4 / A002

**P3** TYPICAL INTERIOR WALL, 2X6 WOOD STUD, GYP. BOARD FINISH - PLUMBING  
RE: DETAIL 5 / A002



1 FLOOR PLAN  
1/4" = 1'-0"



- SECTION:**

1 SECTION IDENTIFICATION  
A101 SHEET DESIGNATION
- DETAIL:**

1 DETAIL IDENTIFICATION  
A101 SHEET DESIGNATION
- ELEVATION:**

1 ELEVATION IDENTIFICATION  
A101 SHEET DESIGNATION
- DOOR DESIGNATION**

101
- WALL TYPE DESIGNATION**

11
- WINDOW/STOREFRONT DESIGNATION**

11
- SPOT ELEVATION**

1
- ELEVATION**

1



ARCHITECT  
**B+A ARCHITECTURE**  
600 BROADWAY BLVD, SUITE 290  
KANSAS CITY, MO 64105  
PH: 816-753-6100

CIVIL ENGINEER  
**OWN, INC**  
8455 COLLEGE BLVD  
OVERLAND PARK, KS 66210  
PH: 816-777-0400

STRUCTURAL ENGINEER  
**PACKARD ENGINEERING**  
21021 OAK DRIVE  
BELTON, MO 64012  
PH: 816-767-7222

MEP ENGINEER  
**LATTIMER SOMMERS & ASSOCIATES**  
3539 SW SUMMERFELD DR, SUITE A  
TOPEKA, KS 66614  
PH: 785-233-0647

COBEY CREEK CLUBHOUSE  
COBEY CREEK 2ND PLAT - S29, T47N, R31W  
LEE'S SUMMIT, MISSOURI

SEAL

DATE ISSUED: FEBRUARY 26, 2025		
NO.	REVISION	DATE

DESIGNED BY: TT/FCR  
DRAWN BY: FCR  
CHECKED BY: HD

THIS DRAWING IS THE PROPERTY OF B+A ARCHITECTURE AND IS NOT TO BE REPRODUCED OR COPIED IN WHOLE OR IN PART. IT IS ONLY TO BE USED FOR THE PROJECT AND SITE SPECIFICALLY IDENTIFIED HEREIN AND IS NOT TO BE USED ON ANY OTHER PROJECT.

SCALES AS STATED HEREON ARE VALID ON THE ORIGINAL DRAWING ONLY. CONTRACTOR SHALL CAREFULLY REVIEW ALL DIMENSIONS AND CONDITIONS SHOWN HEREON AND AT ONCE REPORT TO THE ARCHITECT ANY ERROR/INCONSISTENCY OR OMISSION DISCOVERED.

FLOOR PLAN  
A100

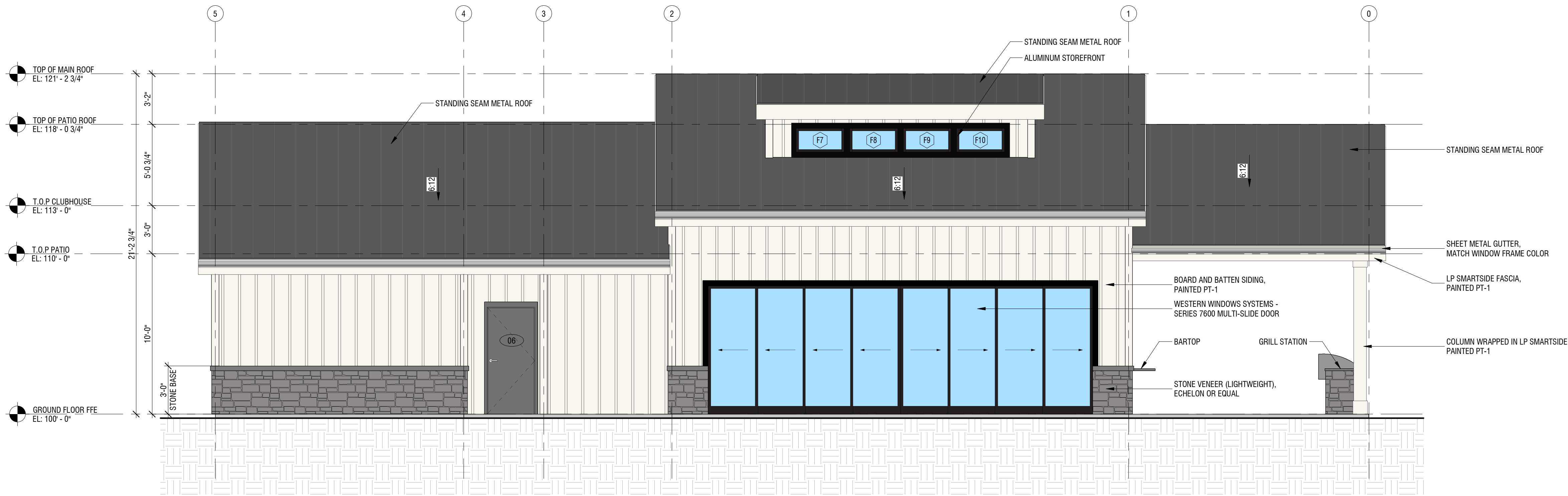
GENERAL NOTES

1. EXTERIOR COLORS ARE INDICATED BY MATERIAL MANUFACTURERS  
ALL EXTERIOR MATERIAL TRANSITION, SILLS AND HEADERS WHICH  
ARE NOT CALLED OUT, MATCH TO WALL TRIM COLOR.  
3. SPLIT SYSTEM W/ GROUND MOUNTED CONDENSORS TO BE SCREENED  
FROM VIEWS BY LANDSCAPING  
4. INSTALL ALL ROOF PENETRATIONS AND EQUIPMENT (IE: VENT PIPES,  
ROOF VENTILATORS) ON THE REAR SIDE OF THE ROOF, TO THE  
GREATEST EXTENT POSSIBLE



EXTERIOR FINISHING SCHEDULE

NO.	MATERIAL/ITEMS	DESCRIPTION	COLOR/FINISH
1	STANDING SEAM METAL ROOF	DREXEL METALS OR EQUAL	COLOR: CHARCOAL OR SIMILAR
2	STONE VENEER (LIGHTWEIGHT)	ECHELON OR EQUAL	HILLCREST STONE / COLOR: ALPINE
3	BOARD AND BATTEN SIDING	LP SMARTSIDE TRIM & SIDING	PT-1: PURE WHITE SW7005
4	WALL TRIM	LP SMARTSIDE TRIM OR EQUAL	PT-1: PURE WHITE SW7005
5	WINDOW TRIM	LP SMARTSIDE TRIM OR EQUAL	MATCH WINDOW FRAME COLOR
6	FASCIA	LP SMARTSIDE TRIM OR EQUAL	PT-1: PURE WHITE SW7005
7	SOFFIT	LP SMARTSIDE SOFFIT OR EQUAL	PT-1: PURE WHITE SW7005
8	GUTTER	24 GA. STEEL	MATCH WINDOW FRAME COLOR
9	WINDOWS & ENTRY/EXIT DOORS	ANDERSEN OR EQUAL/ALUM. CLAD WOOD	METAL - MATTE BLACK
10	EXTERIOR DOORS	HOLLOW METAL, PAINTED	COLOR: GRAY



1 WEST ELEVATION  
1/4" = 1'-0"



2 EAST ELEVATION  
1/4" = 1'-0"



ARCHITECT  
B+A ARCHITECTURE  
600 BROADWAY BLVD, SUITE 290  
KANSAS CITY, MO 64105  
PH: 816-753-6100

CIVIL ENGINEER  
OWN, INC  
8455 COLLEGE BLVD  
OVERLAND PARK, KS 66210  
PH: 816-777-0400

STRUCTURAL ENGINEER  
PACKARD ENGINEERING  
21021 OAK DRIVE  
BELTON, MO 64012  
PH: 816-767-7222

MEP ENGINEER  
LATTIMER SOMMERS  
& ASSOCIATES  
3839 SW SUMMERFELD DR, SUITE A  
TOPEKA, KS 66614  
PH: 785-233-0647

COBEY CREEK CLUBHOUSE  
COBEY CREEK 2ND PLAT - S29, T47N, R31W  
LEE'S SUMMIT, MISSOURI

SEAL

DATE ISSUED: FEBRUARY 26, 2025

NO.	REVISION	DATE

DESIGNED BY: TT/FCR  
DRAWN BY: FCR  
CHECKED BY: HD

THIS DRAWING IS THE PROPERTY OF B+A ARCHITECTURE AND IS NOT  
TO BE REPRODUCED OR COPIED IN WHOLE OR IN PART. IT IS ONLY TO  
BE USED FOR THE PROJECT AND SITE SPECIFICALLY IDENTIFIED HEREIN  
AND IS NOT TO BE USED ON ANY OTHER PROJECT.

SCALES AS STATED HEREON ARE VALID ON THE ORIGINAL DRAWING.  
ONLY A CONTRACTOR SHALL CAREFULLY REVIEW ALL DIMENSIONS AND  
CONDITIONS SHOWN HEREON AND AT ONCE REPORT TO THE  
ARCHITECT ANY ERROR, INCONSISTENCY OR OMISSION DISCOVERED.

ELEVATIONS  
A200

GENERAL NOTES

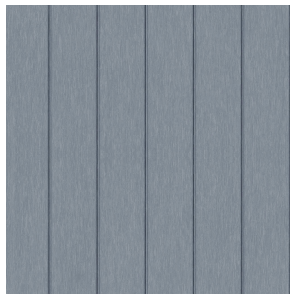
1. EXTERIOR COLORS ARE INDICATED BY MATERIAL MANUFACTURERS
2. ALL EXTERIOR MATERIAL TRANSITION, SILLS AND HEADERS WHICH ARE NOT CALLED OUT, MATCH TO WALL TRIM COLOR.
3. SPLIT SYSTEM W/ GROUND MOUNTED CONDENSORS TO BE SCREENED FROM VIEWS BY LANDSCAPING
4. INSTALL ALL ROOF PENETRATIONS AND EQUIPMENT (IE: VENT PIPES, ROOF VENTILATORS) ON THE REAR SIDE OF THE ROOF, TO THE GREATEST EXTENT POSSIBLE



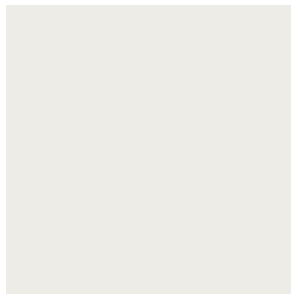
BOARD AND  
BATTEN



STONE VENEER



STANDING SEAM  
METAL ROOF



PT-1: SW7005

EXTERIOR FINISHING SCHEDULE

NO.	MATERIAL/ITEMS	DESCRIPTION	COLOR/FINISH
1	STANDING SEAM METAL ROOF	DREXEL METALS OR EQUAL	COLOR: CHARCOAL OR SIMILAR
2	STONE VENEER (LIGHTWEIGHT)	ECHELON OR EQUAL	HILLCREST STONE / COLOR: ALPINE
3	BOARD AND BATTEN SIDING	LP SMARTSIDE TRIM & SIDING	PT-1: PURE WHITE SW7005
4	WALL TRIM	LP SMARTSIDE TRIM OR EQUAL	PT-1: PURE WHITE SW7005
5	WINDOW TRIM	LP SMARTSIDE TRIM OR EQUAL	MATCH WINDOW FRAME COLOR
6	FASCIA	LP SMARTSIDE TRIM OR EQUAL	PT-1: PURE WHITE SW7005
7	SOFFIT	LP SMARTSIDE SOFFIT OR EQUAL	PT-1: PURE WHITE SW7005
8	GUTTER	24 GA. STEEL	MATCH WINDOW FRAME COLOR
9	WINDOWS & ENTRY/EXIT DOORS	ANDERSEN OR EQUAL/ALUM. CLAD WOOD	METAL - MATTE BLACK
10	EXTERIOR DOORS	HOLLOW METAL, PAINTED	COLOR: GRAY

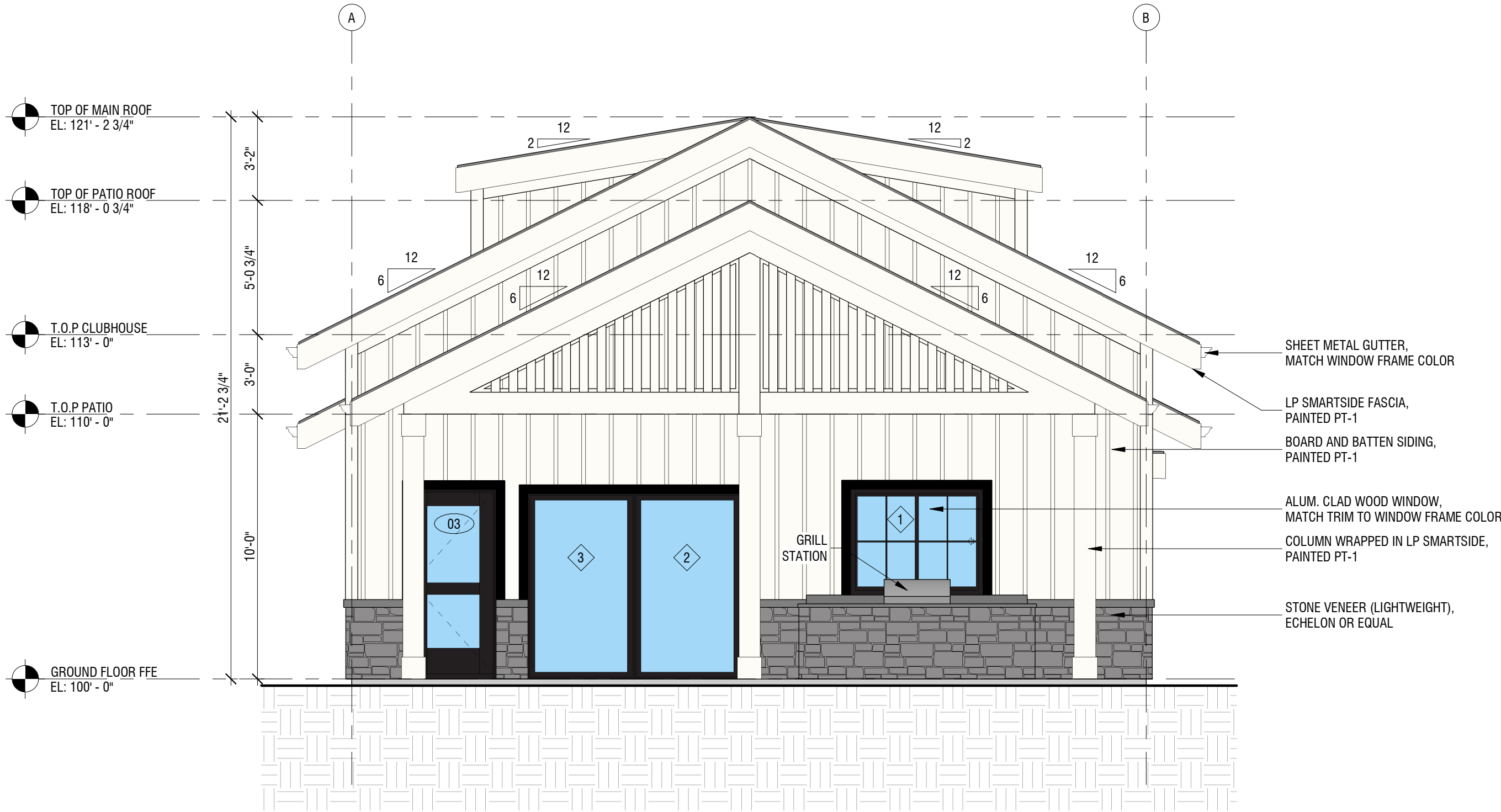


ARCHITECT  
B+A ARCHITECTURE  
600 BROADWAY BLVD, SUITE 290  
KANSAS CITY, MO 64105  
PH: 816-753-6100

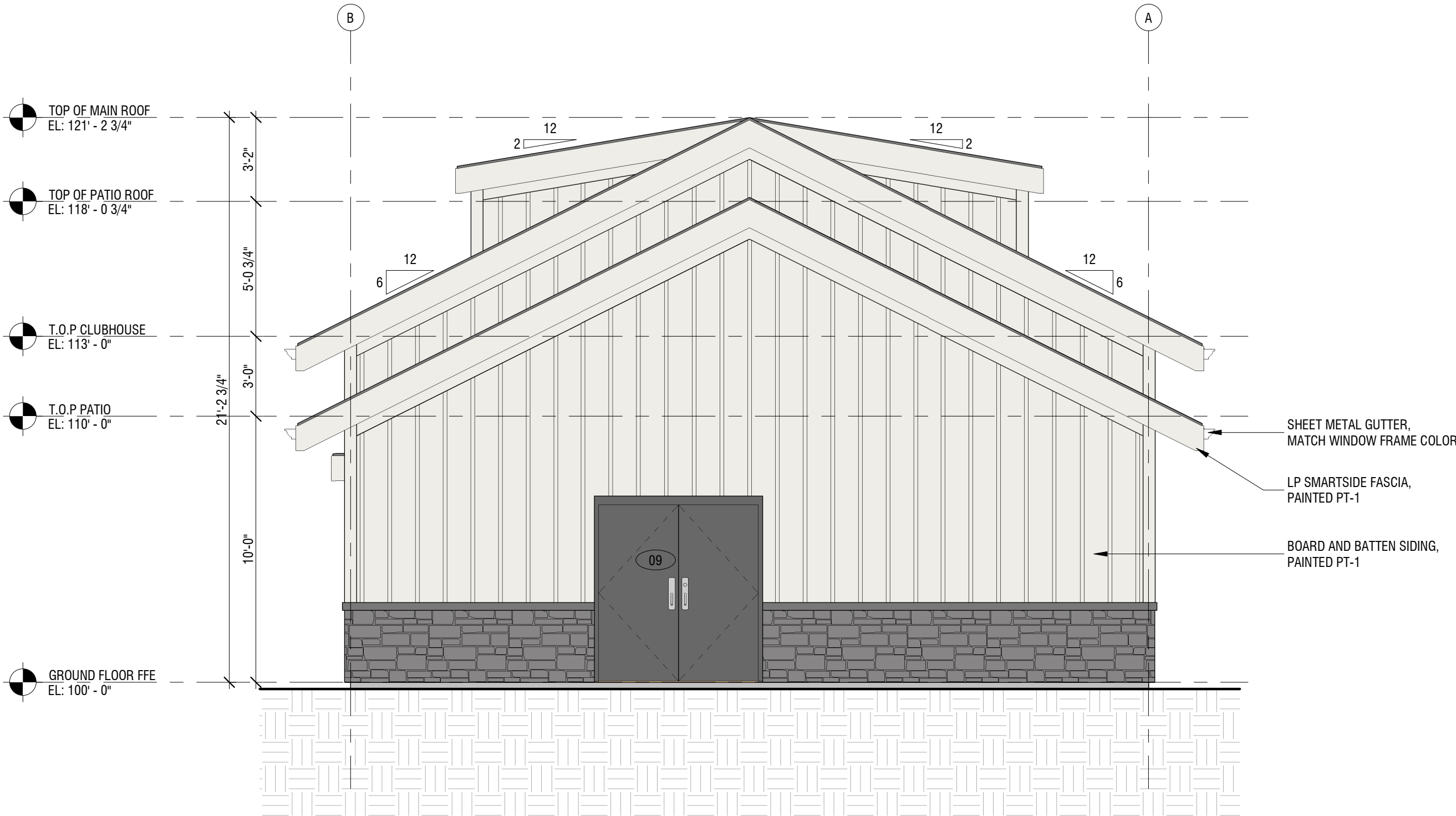
CIVIL ENGINEER  
OWN, INC  
8455 COLLEGE BLVD  
OVERLAND PARK, KS 66210  
PH: 816-777-0400

STRUCTURAL ENGINEER  
PACKARD ENGINEERING  
21021 OAK DRIVE  
BELTON, MO 64012  
PH: 816-767-7222

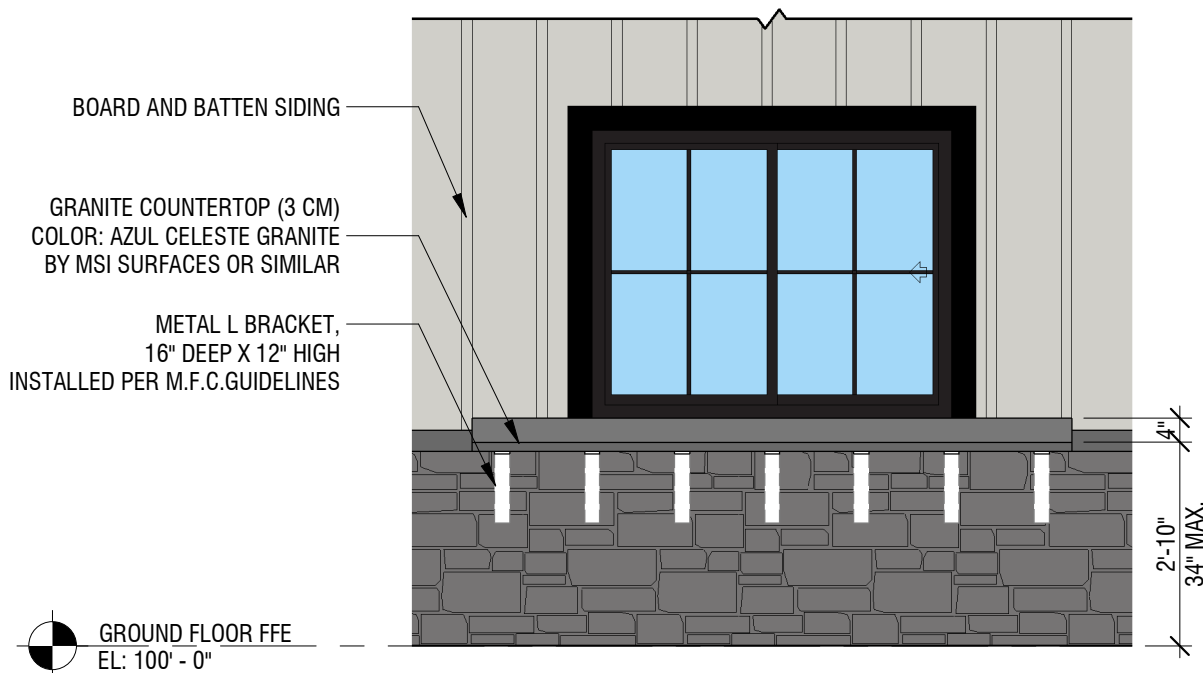
MEP ENGINEER  
LATTIMER SOMMERS  
& ASSOCIATES  
3839 SW SUMMERFELD DR, SUITE A  
TOPEKA, KS 66614  
PH: 785-233-0647



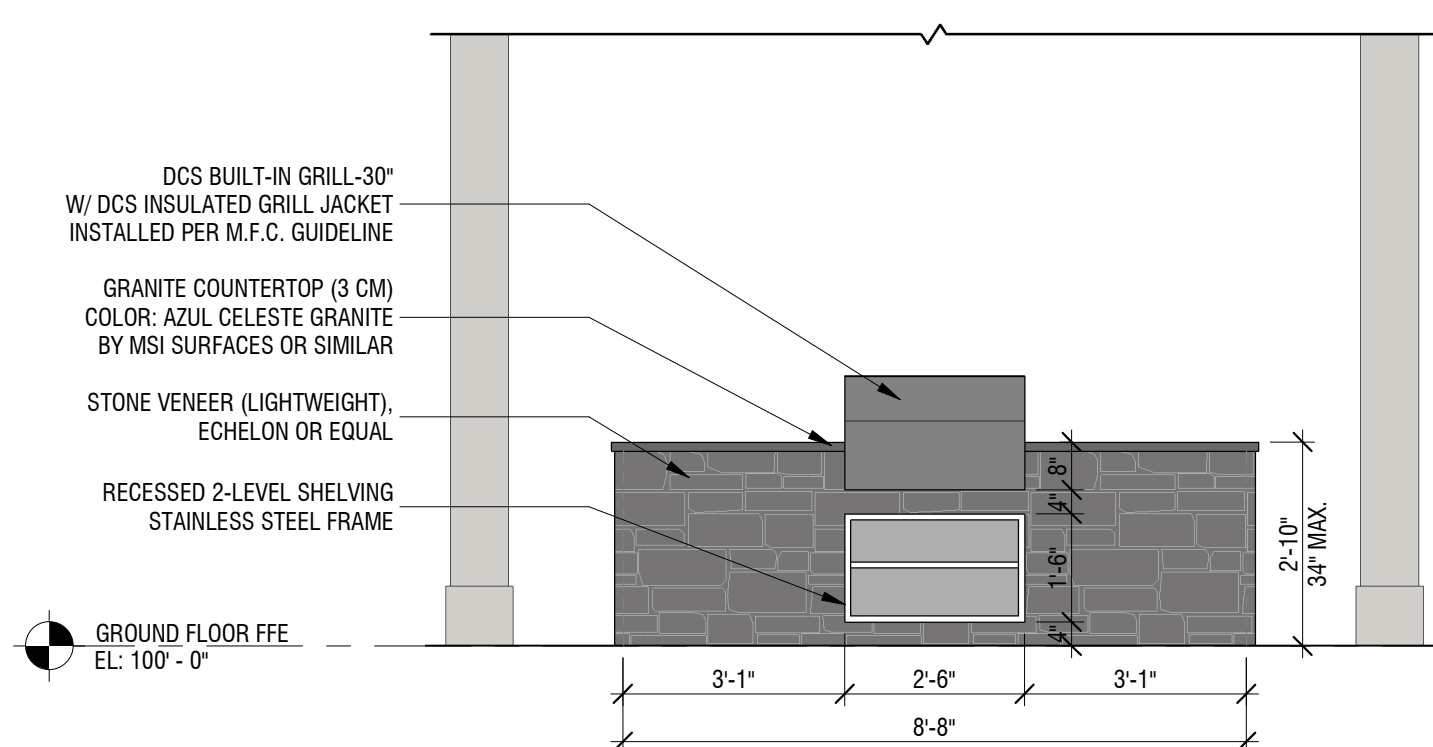
1 SOUTH ELEVATION  
1/4" = 1'-0"



2 NORTH ELEVATION  
1/4" = 1'-0"



3 BAR - ELEVATION  
3/8" = 1'-0"



4 GRILL STATION - ELEVATION  
3/8" = 1'-0"

SEAL

NO.	REVISION	DATE

DESIGNED BY: TT/FCR  
DRAWN BY: FCR  
CHECKED BY: HD

THIS DRAWING IS THE PROPERTY OF B+A ARCHITECTURE AND IS NOT TO BE REPRODUCED OR COPIED IN WHOLE OR IN PART. IT IS ONLY TO BE USED FOR THE PROJECT AND SITE SPECIFICALLY IDENTIFIED HEREIN AND IS NOT TO BE USED ON ANY OTHER PROJECT.

SCALES AS STATED HEREON ARE VALID ON THE ORIGINAL DRAWING. ONLY CONTRACTOR SHALL CAREFULLY REVIEW ALL DIMENSIONS AND CONDITIONS SHOWN HEREON AND AT ONCE REPORT TO THE ARCHITECT ANY ERROR, INCONSISTENCY OR OMISSION DISCOVERED.



ARCHITECT  
B+A ARCHITECTURE  
600 BROADWAY BLVD, SUITE 290  
KANSAS CITY, MO 64105  
PH: 816-753-6100

CIVIL ENGINEER  
OWN, INC  
8455 COLLEGE BLVD  
OVERLAND PARK, KS 66210  
PH: 816-777-0400

STRUCTURAL ENGINEER  
PACKARD ENGINEERING  
21021 OAK DRIVE  
BELTON, MO 64012  
PH: 816-767-7222

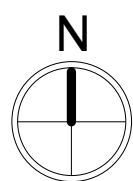
MEP ENGINEER  
LATTIMER SOMMERS  
& ASSOCIATES  
3839 SW SUMMERFIELD DR, SUITE A  
TOPEKA, KS 66614  
PH: 785-233-0647

LIGHTING FIXTURES

- SL1 — PARKING LOT FIXTURES (POLE MOUNTED)  
SL2 — MCGRAW-EDISON - GLEON GALLEON LED  
MOUNTING HEIGHT: 15'-0"

1 EXTERIOR LIGHTING PLAN

1/16" = 1'-0"



SEAL

DATE ISSUED: FEBRUARY 26, 2025

NO.	REVISION	DATE

DESIGNED BY: TT/FCR  
DRAWN BY: FCR  
CHECKED BY: HD

THIS DRAWING IS THE PROPERTY OF B+A ARCHITECTURE AND IS NOT TO BE REPRODUCED OR COPIED IN WHOLE OR IN PART. IT IS ONLY TO BE USED FOR THE PROJECT AND SITE SPECIFICALLY IDENTIFIED HEREIN AND IS NOT TO BE USED ON ANY OTHER PROJECT.

SCALES AS STATED HEREON ARE VALID ON THE ORIGINAL DRAWING ONLY. CONTRACTOR SHALL CAREFULLY REVIEW ALL DIMENSIONS AND CONDITIONS SHOWN HEREON AND AT ONCE REPORT TO THE ARCHITECT ANY ERROR OR INCONSISTENCY OR OMISSION DISCOVERED.

EXTERIOR LIGHTING PLAN

EL-1