

2751 NORTHEAST DOUGLAS STREET
LEE'S SUMMIT, MISSOURI 64064

CONSTRUCTION PLANS
FOR
KANSAS CITY - LEE'S SUMMIT
REGIONAL AIRPORT

CITY PROJECT NO. 17932172

GENERAL AVIATION TERMINAL

IFB PLAN SET


DECEMBER 13, 2024

CALL MISSOURI ONE-CALL SYSTEMS
BEFORE EXCAVATING
1-800-DIG-RITE

DESIGN AIRCRAFT - GEOMETRY
CANADAIR CL-600
AIRCRAFT APPROACH CATEGORY C
AIRPLANE DESIGN GROUP II
DESIGN AIRCRAFT - STRUCTURE
GRUMMAN GULFSTREAM IV
GROSS WEIGHT - 71,800 LBS
EQUIVALENT ANNUAL DEPARTURES - 651

MAXIMUM EQUIPMENT HEIGHT: 100'

UNICOM/CTAF FREQUENCY - 122.80



22001238

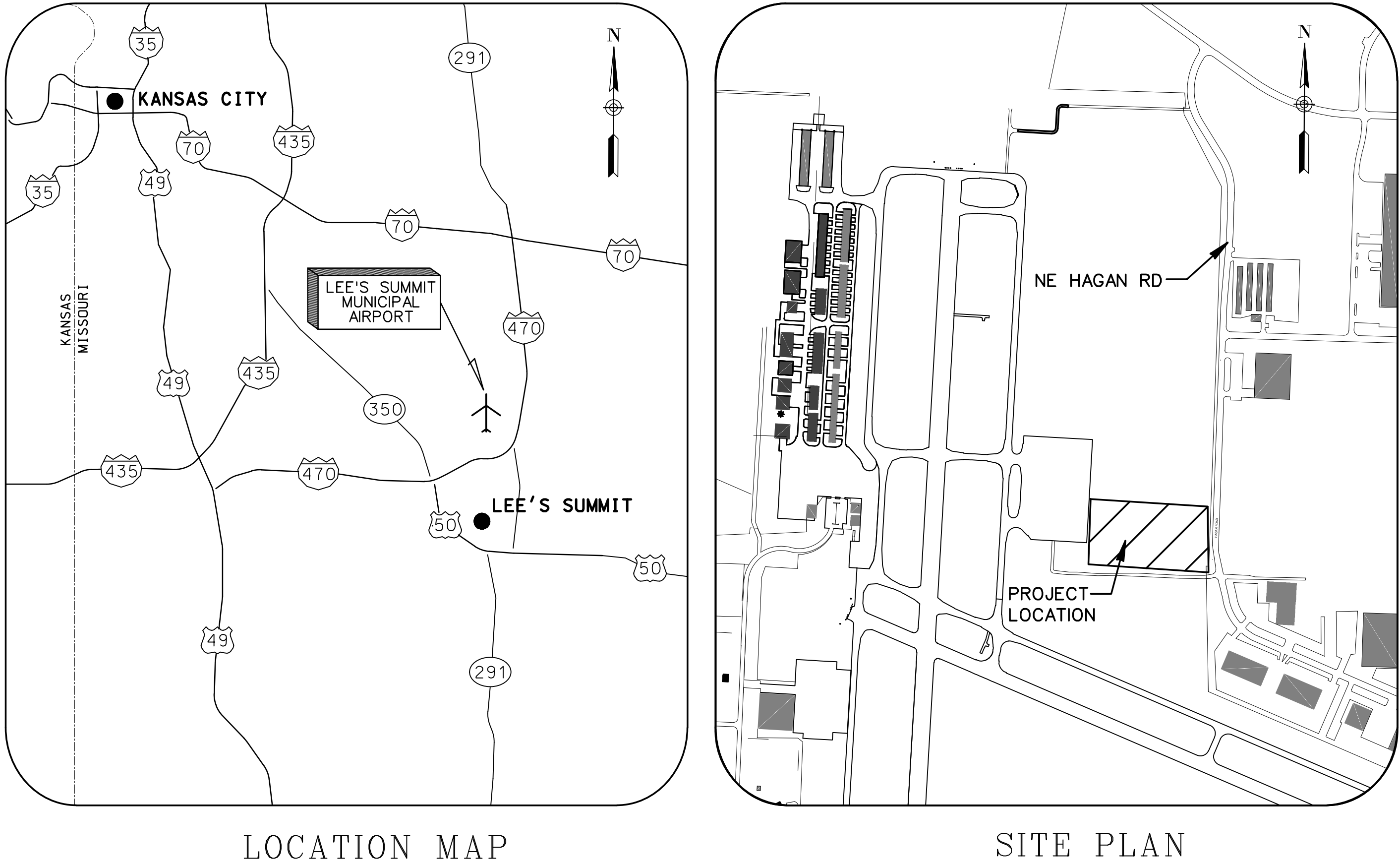
©Copyright CMT, Inc.
PROFESSIONAL ENGINEERING - 000631

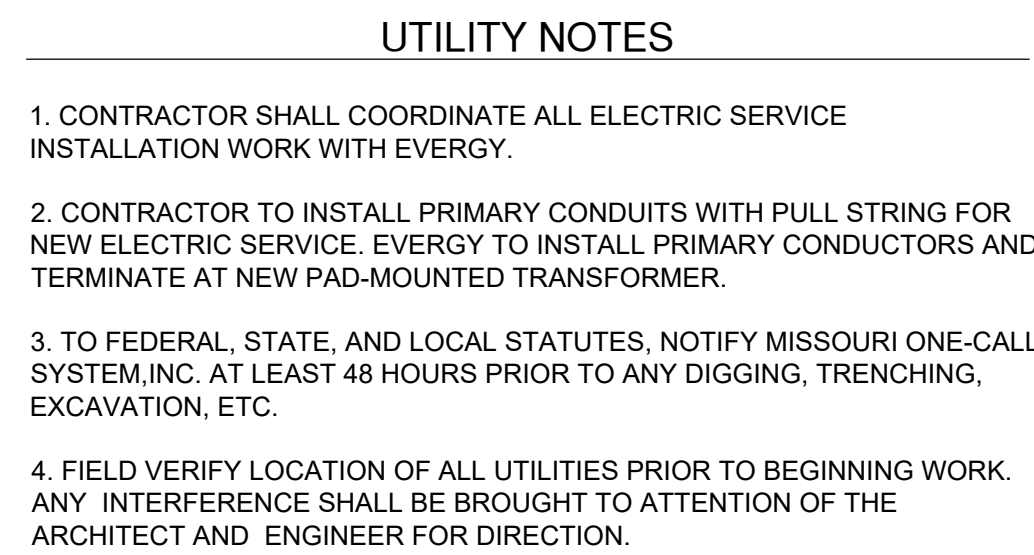
CRAWFORD MURPHY & TILLY, INC.
CONSULTING ENGINEERS

■ SPRINGFIELD, IL ■ AURORA, IL ■ ST. LOUIS, MO
■ EDWARDSVILLE, IL ■ CHICAGO, IL ■ PEORIA, IL ■ ROCKFORD, IL
■ INDIANAPOLIS, IN ■ COLUMBUS, OH ■ SPRINGFIELD, MO
■ KANSAS CITY, MO ■ LA BELLE, FL ■ MOLINE, IA

SUBMITTED BY GERALD BOLLINGER

DATE DECEMBER 13, 2024



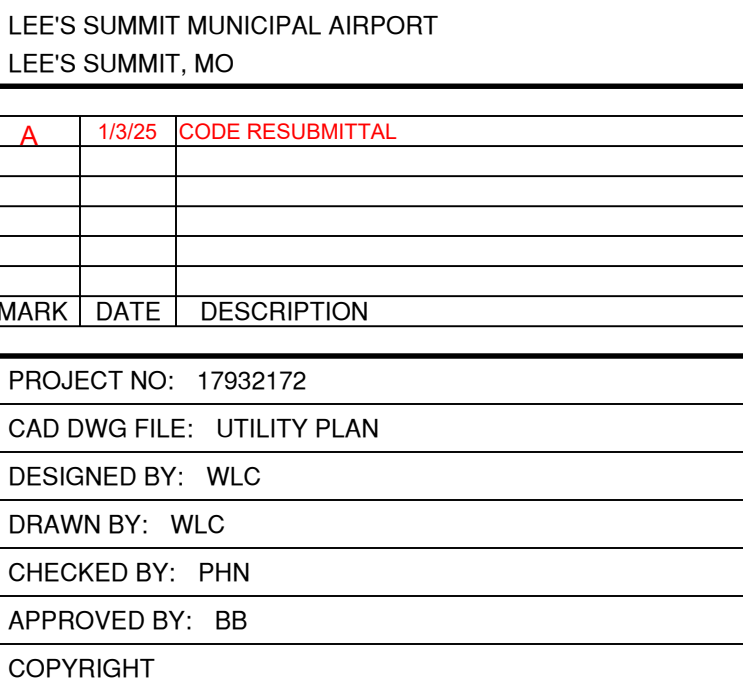


1. CONTRACTOR SHALL COORDINATE ALL ELECTRIC SERVICE INSTALLATION WORK WITH EVERY.
2. CONTRACTOR TO INSTALL PRIMARY CONDUITS WITH PULL STRING FOR NEW ELECTRIC SERVICE. FIRST TO INSTALL PRIMARY CONDUCTORS AND TERMINATE AT NEW PAD-MOUNTED TRANSFORMER.
3. TO FEDERAL, STATE, AND LOCAL STATUTES, NOTIFY MISSOURI ONE-CALL SYSTEM, INC. AT LEAST 48 HOURS PRIOR TO ANY DIGGING, TRENCHING, EXCAVATION, ETC.
4. FIELD VERIFY LOCATION OF ALL UTILITIES PRIOR TO BEGINNING WORK. ANY INTERFERENCE SHALL BE BROUGHT TO ATTENTION OF THE ARCHITECT AND ENGINEER FOR DIRECTION.



KC - LEE'S SUMMIT REGIONAL
LEE'S SUMMIT, MISSOURI

GENERAL AVIATION TERMINAL
CITY PROJECT NO. - 17932172

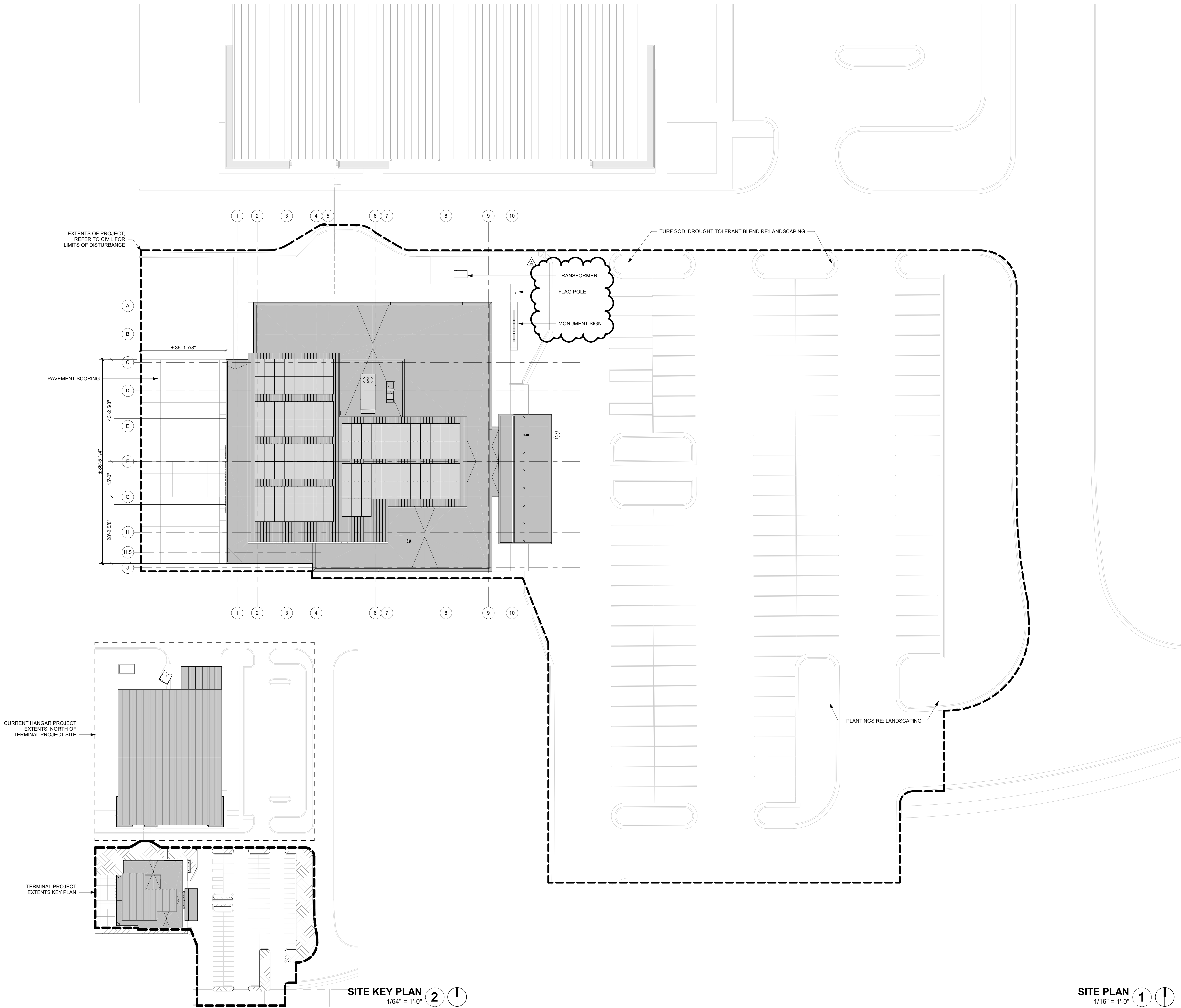


UTILITY PLAN 1 OF 2

C119

SHEET 026 OF 133

1/10/2025 9:33:39 AM



PLAN NOTES

3 DECORATIVE BOLLARD WITH INTEGRAL LIGHTING



1627 MAIN STREET, SUITE 600
KANSAS CITY, MO 64108



1627 MAIN STREET, SUITE 100
KANSAS CITY, MO 64108



1701 WALNUT STREET, SUITE 300
KANSAS CITY, MO 64108

KC - LEE'S SUMMIT REGIONAL
LEE'S SUMMIT, MISSOURI
GENERAL AVIATION TERMINAL
CITY PROJECT NO. - 17932172



LEES SUMMIT MUNICIPAL AIRPORT
LEES SUMMIT, MO

01.03.25 CITY REVIEW COMMENTS

PROJECT NO: 2403
REVIT FILE: 2403 Lee's Summit Terminal-R24.rvt
DESIGNED BY: Designer
DRAWN BY: EM
CHECKED BY: JSB
APPROVED BY: Approver
COPYRIGHT 2024

SHEET TITLE

SITE PLAN

A-100

SHEET OF

1/10/2025 9:33:43 AM



1ST FLOOR PLAN 1
1/8" = 1'-0"



1627 MAIN STREET, SUITE 600
KANSAS CITY, MO 64108



1627 MAIN STREET, SUITE 100
KANSAS CITY, MO 64108



1701 WALNUT STREET, SUITE 300
KANSAS CITY, MO 64108

KC - LEE'S SUMMIT REGIONAL
LEE'S SUMMIT, MISSOURI
GENERAL AVIATION TERMINAL
CITY PORJECT NO. - 17932172



11-25-2024

LEES SUMMIT MUNICIPAL AIRPORT
LEES SUMMIT, MO

MARK DATE DESCRIPTION

PROJECT NO: 2403
REVIT FILE: 2403 Lee's Summit Terminal-R24.rvt
DESIGNED BY: Designer
DRAWN BY: EM
CHECKED BY: JSB
APPROVED BY: Approver
COPYRIGHT 2024

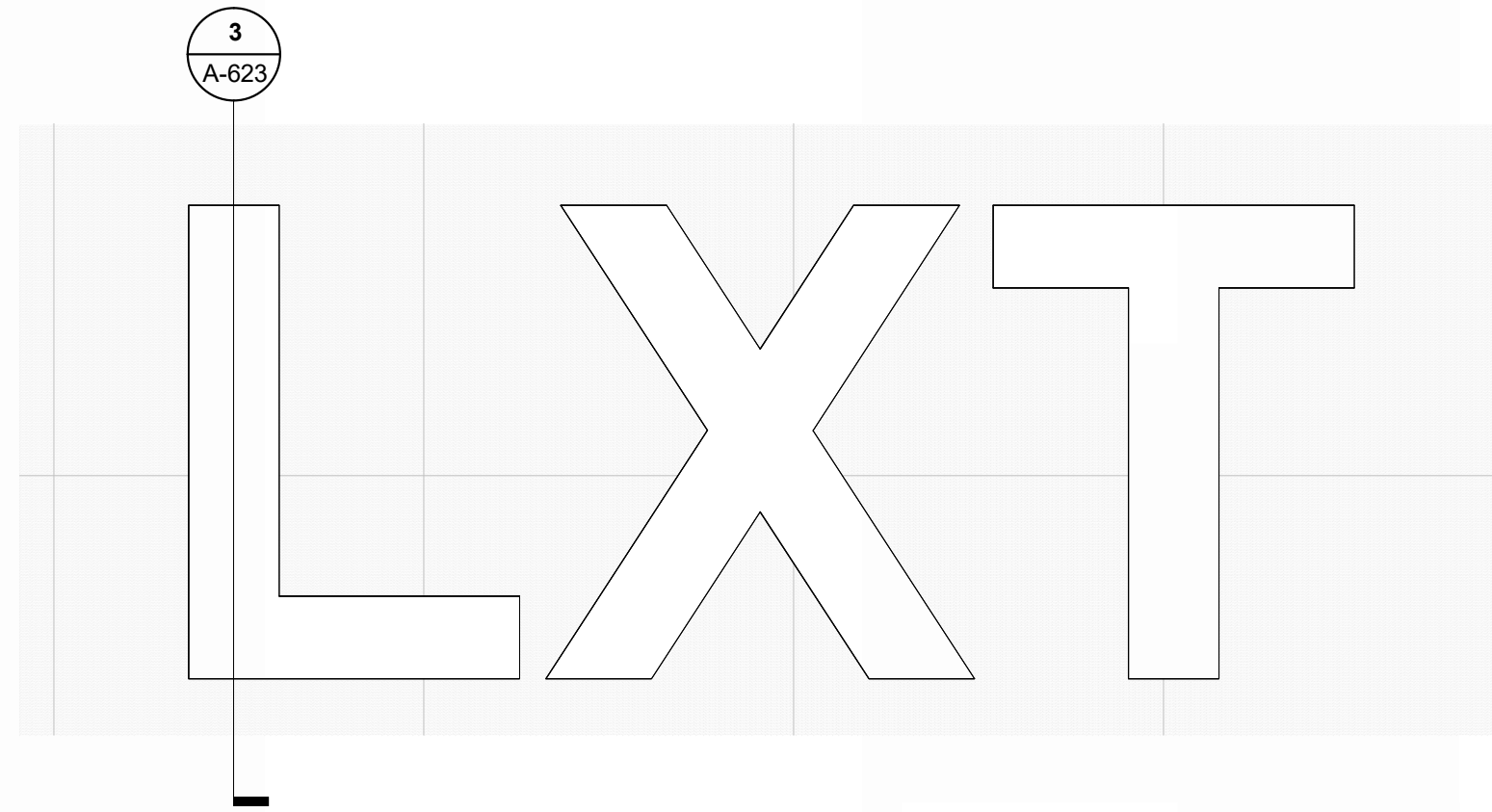
SHEET TITLE

1ST FLOOR PLAN

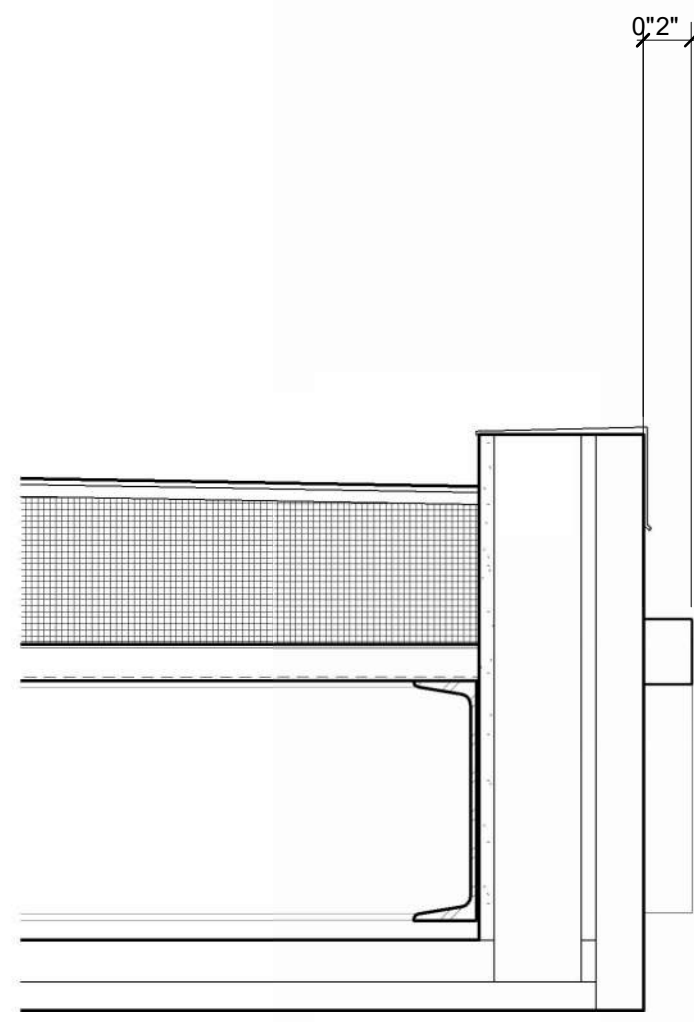
A-101

SHEET OF

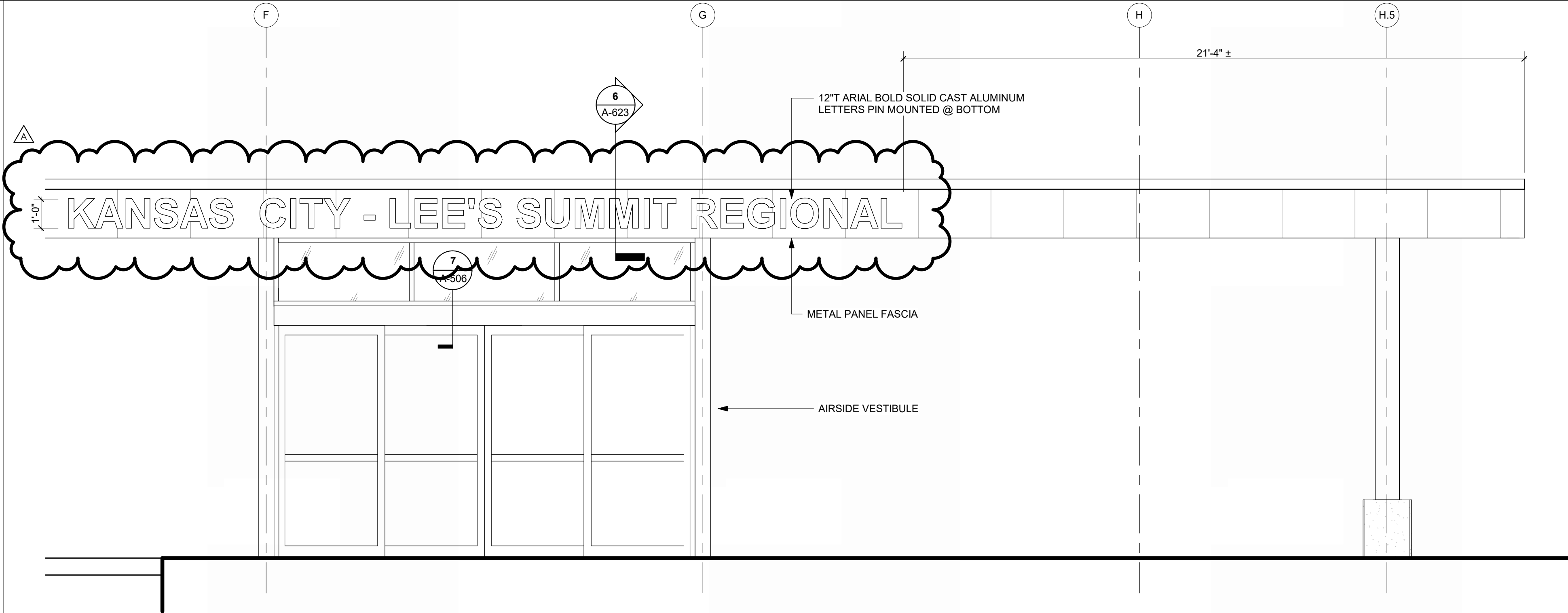
1/10/2025 9:38:43 AM



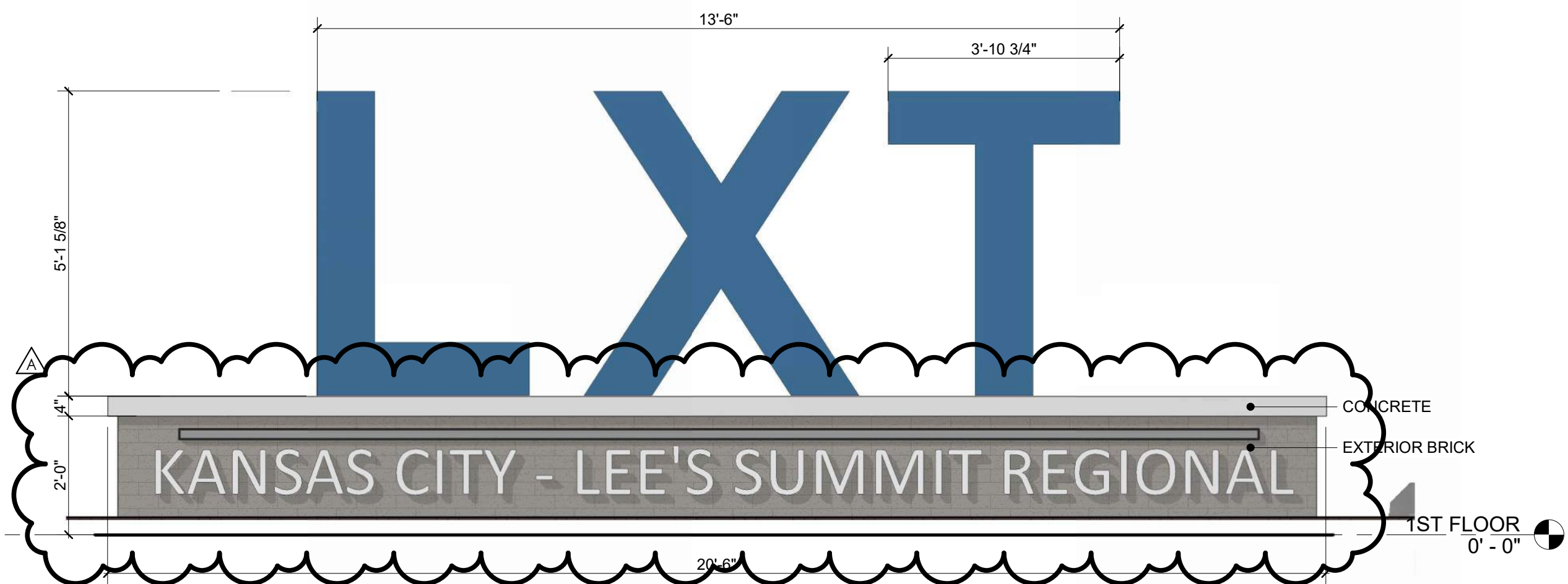
FRONT ELEVATION - INTERIOR LXT SIGNAGE
REFERENCED FROM 1 / A-403 1/2" = 1'-0" **7**



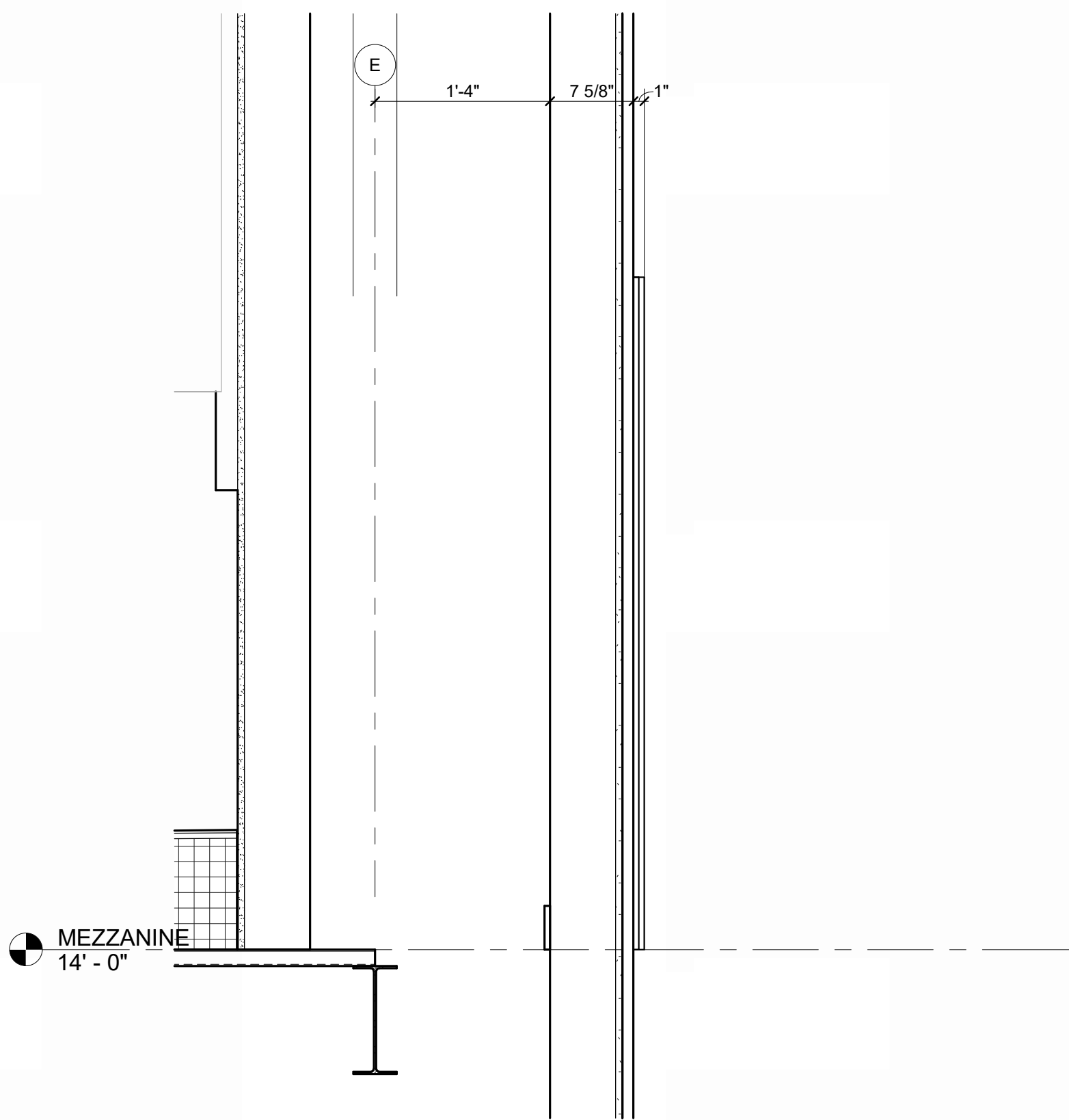
SECTION THRU AIRSIDE SIGNAGE
REFERENCED FROM 5 / A-623 1 1/2" = 1'-0" **6**



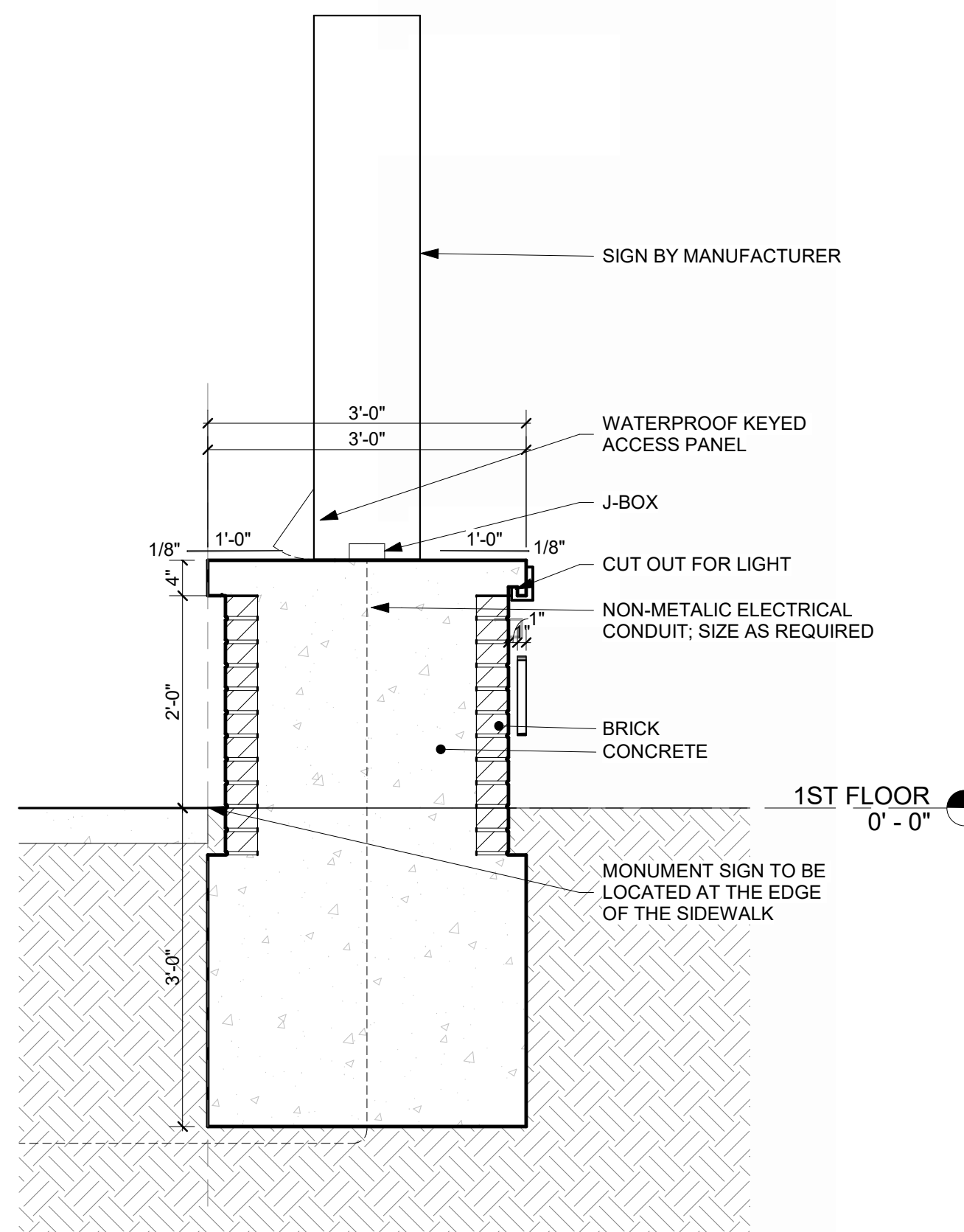
ENLARGED ELEVATION, AIRSIDE SIGNAGE
REFERENCED FROM 1 / A-102 3/8" = 1'-0" **5**



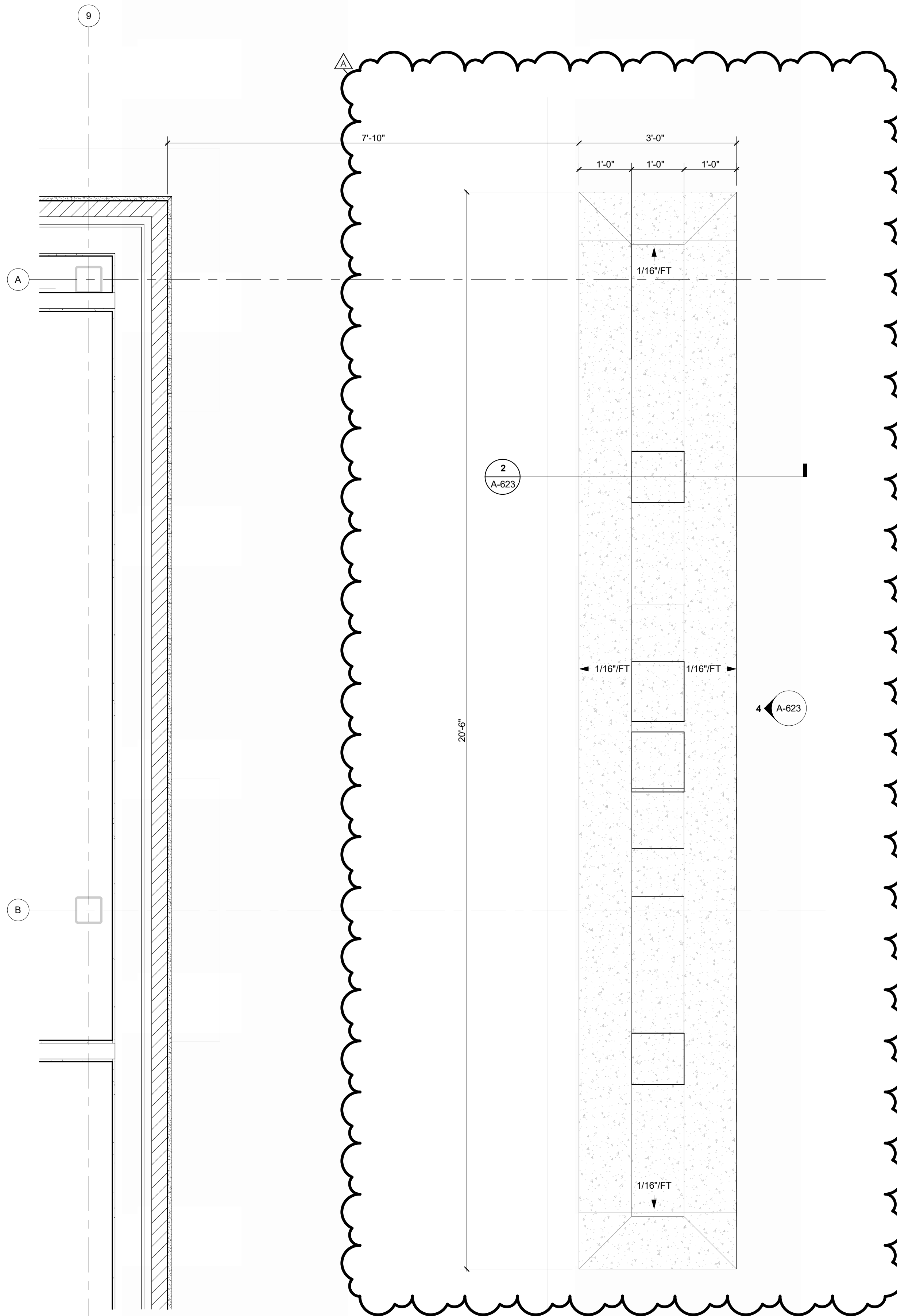
FRONT ELEVATION - MONUMENT SIGN
REFERENCED FROM 1 / A-623 1/2" = 1'-0" **4**



SECTION - INTERIOR LXT SIGNAGE
REFERENCED FROM 7 / A-623 1" = 1'-0" **3**



TRANSVERSE SECTION @ MONUMENT SIGN
REFERENCED FROM 1 / A-623 3/4" = 1'-0" **2**



ENLARGED PLAN - MONUMENT SIGN
REFERENCED FROM 1 / A-101 3/4" = 1'-0" **1**



1627 MAIN STREET, SUITE 600
KANSAS CITY, MO 64108



1627 MAIN STREET, SUITE 100
KANSAS CITY, MO 64108



1701 WALNUT STREET, SUITE 300
KANSAS CITY, MO 64108

KC - LEE'S SUMMIT REGIONAL
LEE'S SUMMIT, MISSOURI
GENERAL AVIATION TERMINAL
CITY PORJECT NO. - 17932172



LEES SUMMIT MUNICIPAL AIRPORT
LEES SUMMIT, MO

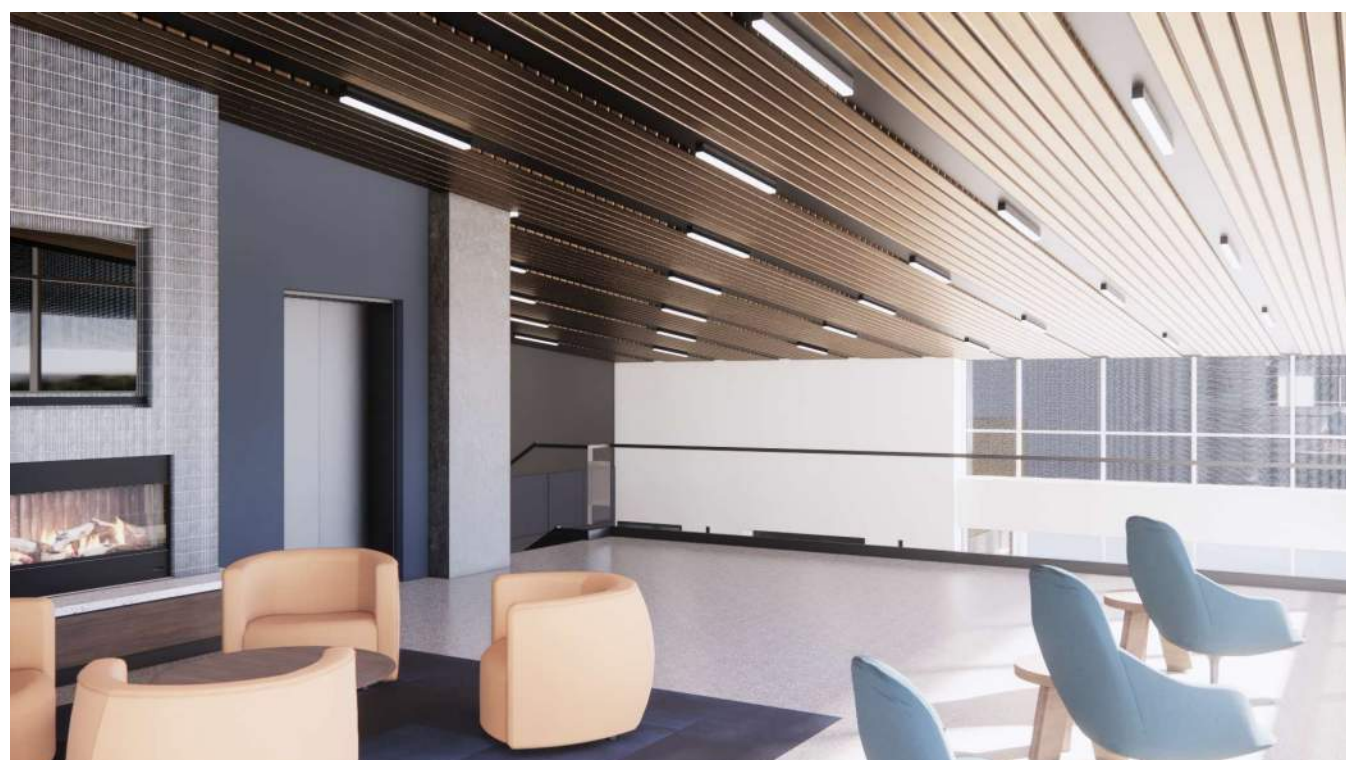
PROJECT NO: 2403
REVIT FILE: 2403 Lee's Summit Terminal-R24.rvt
DESIGNED BY: Designer
DRAWN BY: HUM
CHECKED BY: JSB
APPROVED BY: Approver
COPYRIGHT 2024

SHEET TITLE

EXTERIOR SIGNAGE

A-623

SHEET OF



1627 MAIN STREET, SUITE 600
KANSAS CITY, MO 64108



1627 MAIN STREET, SUITE 100
KANSAS CITY, MO 64108



1701 WALNUT STREET, SUITE 300
KANSAS CITY, MO 64108

KC - LEE'S SUMMIT REGIONAL
LEE'S SUMMIT, MISSOURI

GENERAL AVIATION TERMINAL
CITY PORJECT NO. - 17932172



LEES SUMMIT MUNICIPAL AIRPORT
LEES SUMMIT, MO

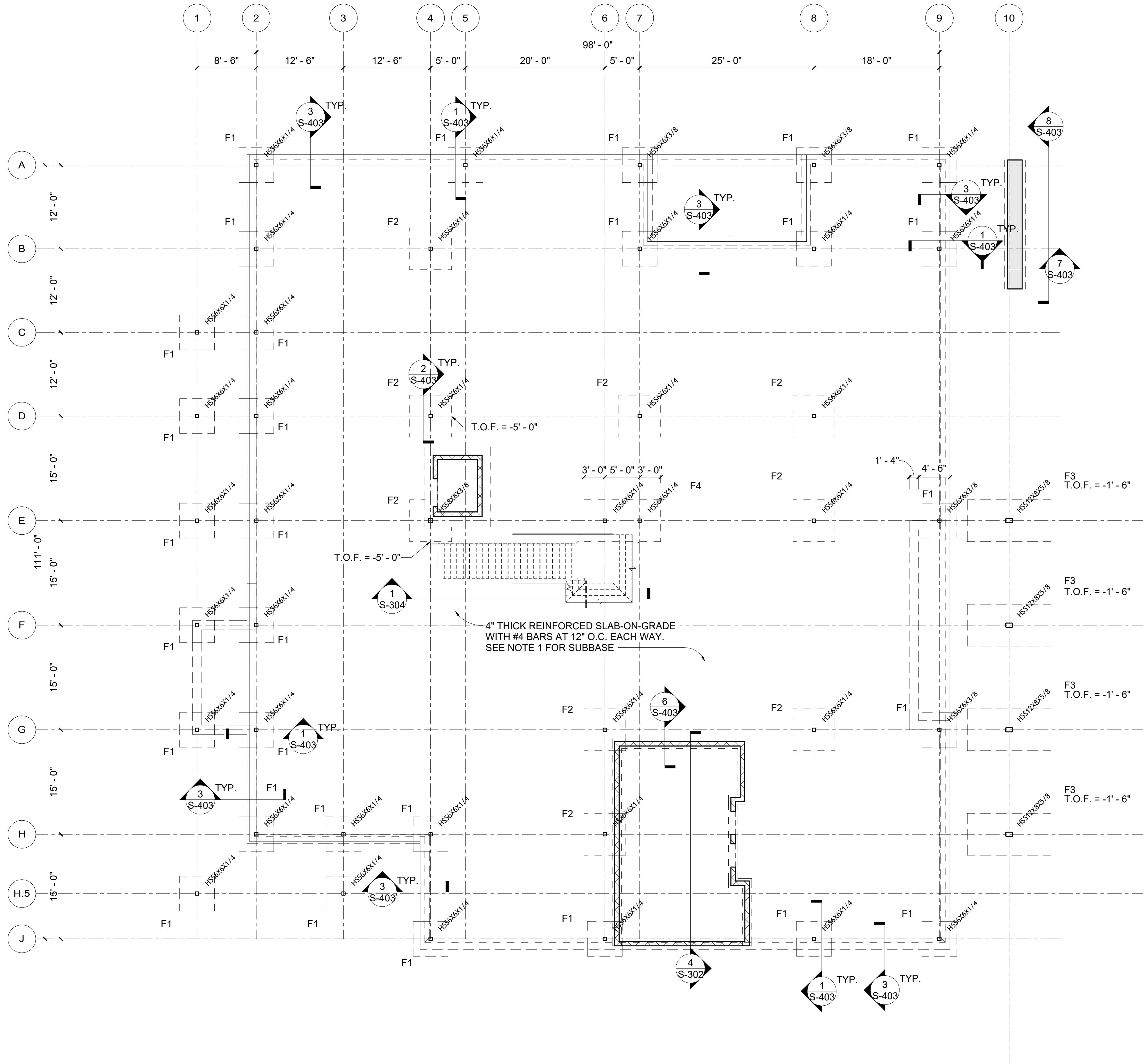
MARK	DATE	DESCRIPTION
PROJECT NO:	2403	
REVIT FILE:	2403 Lee's Summit Terminal-R24.rvt	
DESIGNED BY:	Designer	
DRAWN BY:	EM	
CHECKED BY:	JSB	
APPROVED BY:	Approver	
COPYRIGHT 2024		

SHEET TITLE

3D VIEWS

A-901

SHEET OF



1 Foundation Plan
1/8" = 1'-0"

SPREAD FOOTING							
ID	QTY.	DIMENSIONS			REINF.		COMMENTS
		WIDTH	LENGTH	THICKNESS	TOP	BOT	
F1	30	5' - 0"	5' - 0"	2' - 6"	~	#5 @ 12" O.C. E.W.	
F2	9	6' - 0"	6' - 0"	1' - 4"	~	#5 @ 10" O.C. E.W.	
F3	4	6' - 0"	12' - 0"	2' - 6"	5 - #8 LONG. 10 - #8 TRANS.	5 - #8 LONG. 10 - #8 TRANS.	
F4	1	11' - 0"	6' - 0"	1' - 4"	~	#5 @ 10" O.C. E.W.	

- NOTES:
- SLAB ON GRADE TO BE PLACED OVER 15-MIL VAPOR BARRIER OVER 4" CLEAN ROCK, OVER 12" CRUSHED LIMESTONE SCREENINGS PER GEOTECH REPORT
 - TOP OF FOOTING = -1' - 3" (UNLESS NOTED OTHERWISE)



1627 MAIN STREET, SUITE 600
KANSAS CITY, MO 64108

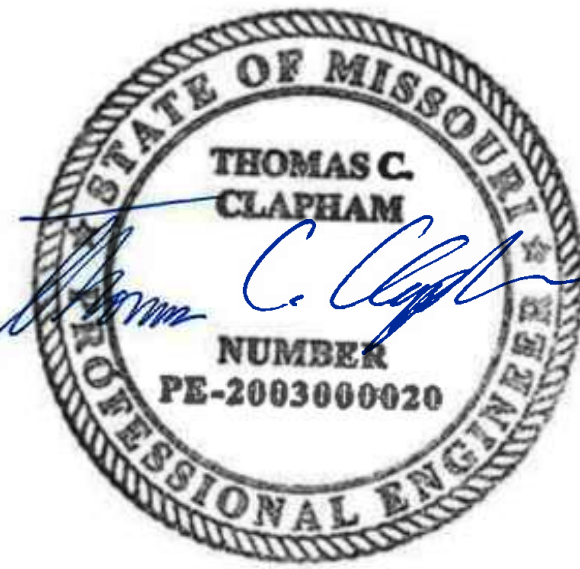


1627 MAIN STREET, SUITE 100
KANSAS CITY, MO 64108



1701 WALNUT STREET, SUITE 300
KANSAS CITY, MO 64108

KC - LEE'S SUMMIT REGIONAL
LEE'S SUMMIT, MISSOURI
GENERAL AVIATION TERMINAL
CITY PROJECT NO. - 17932172



10/25/24

LEES SUMMIT MUNICIPAL AIRPORT AUTHORITY
LEES SUMMIT, MO

MARK	DATE	DESCRIPTION
------	------	-------------

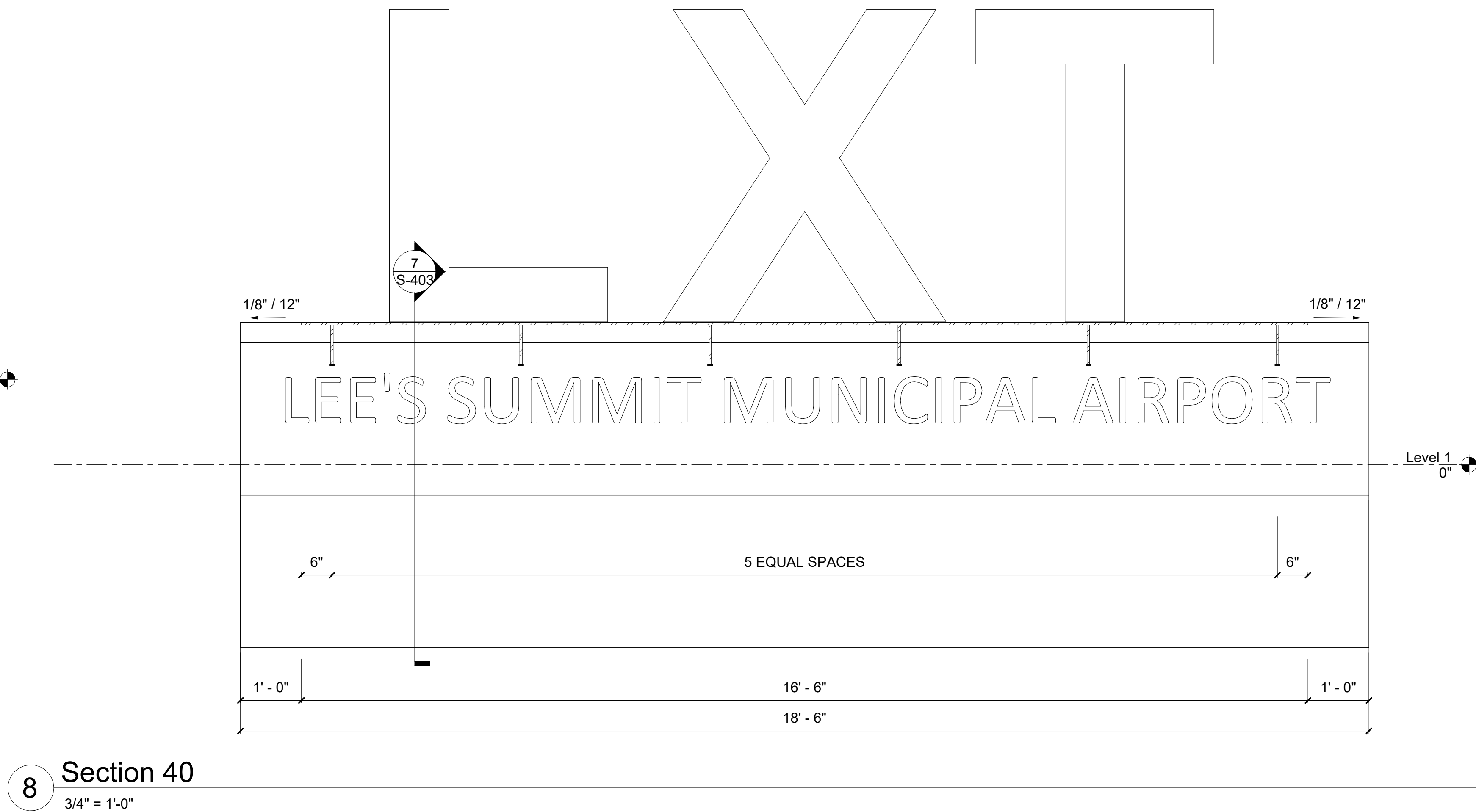
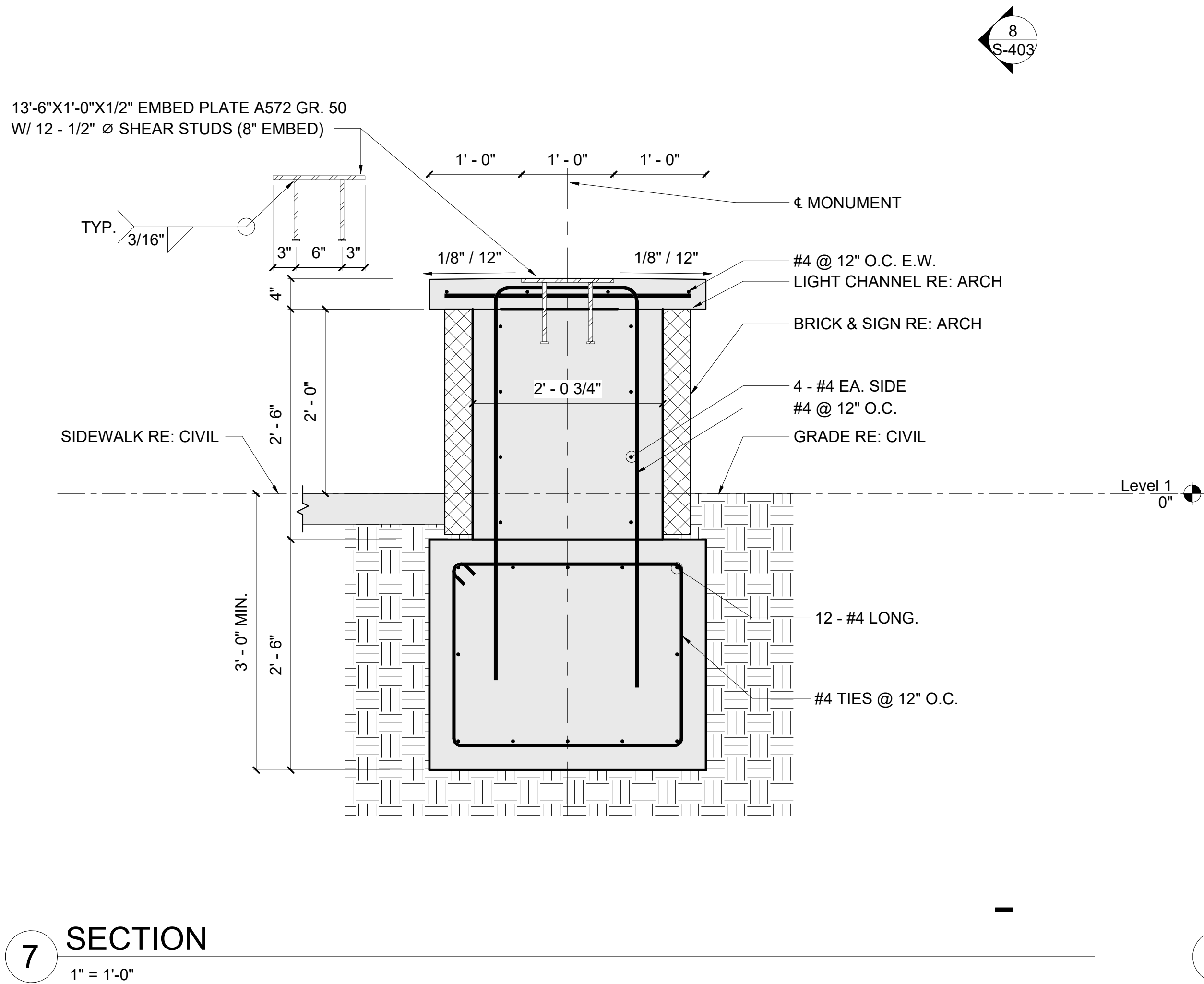
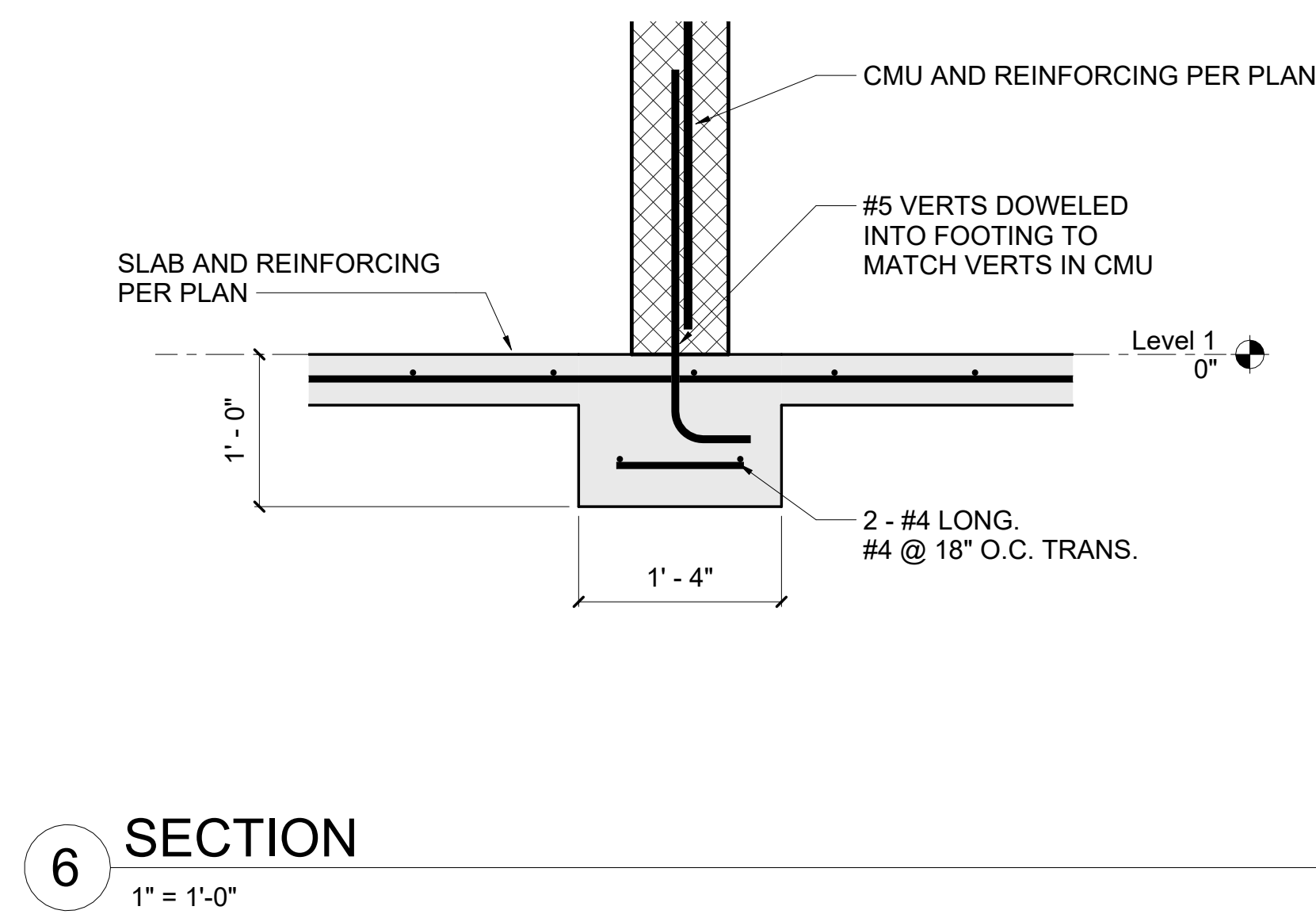
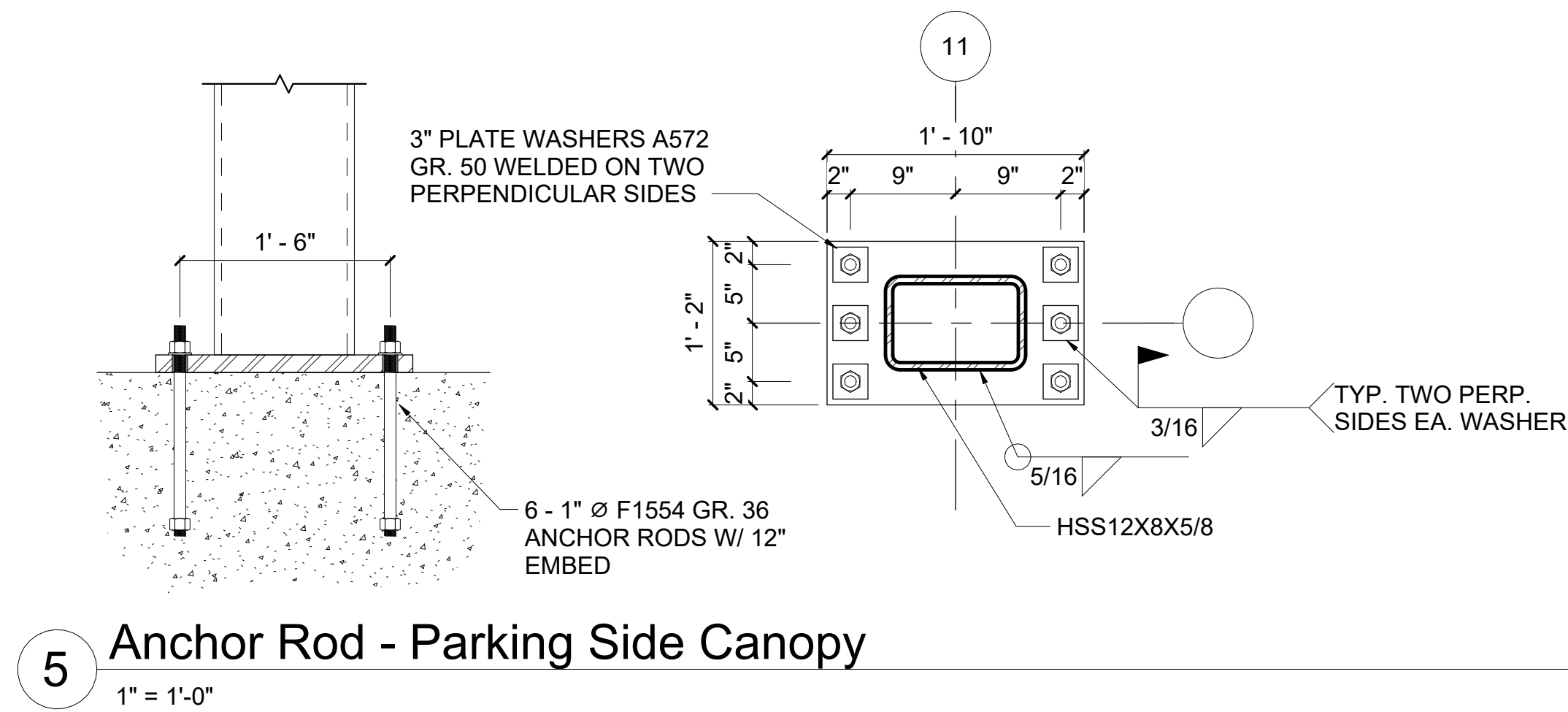
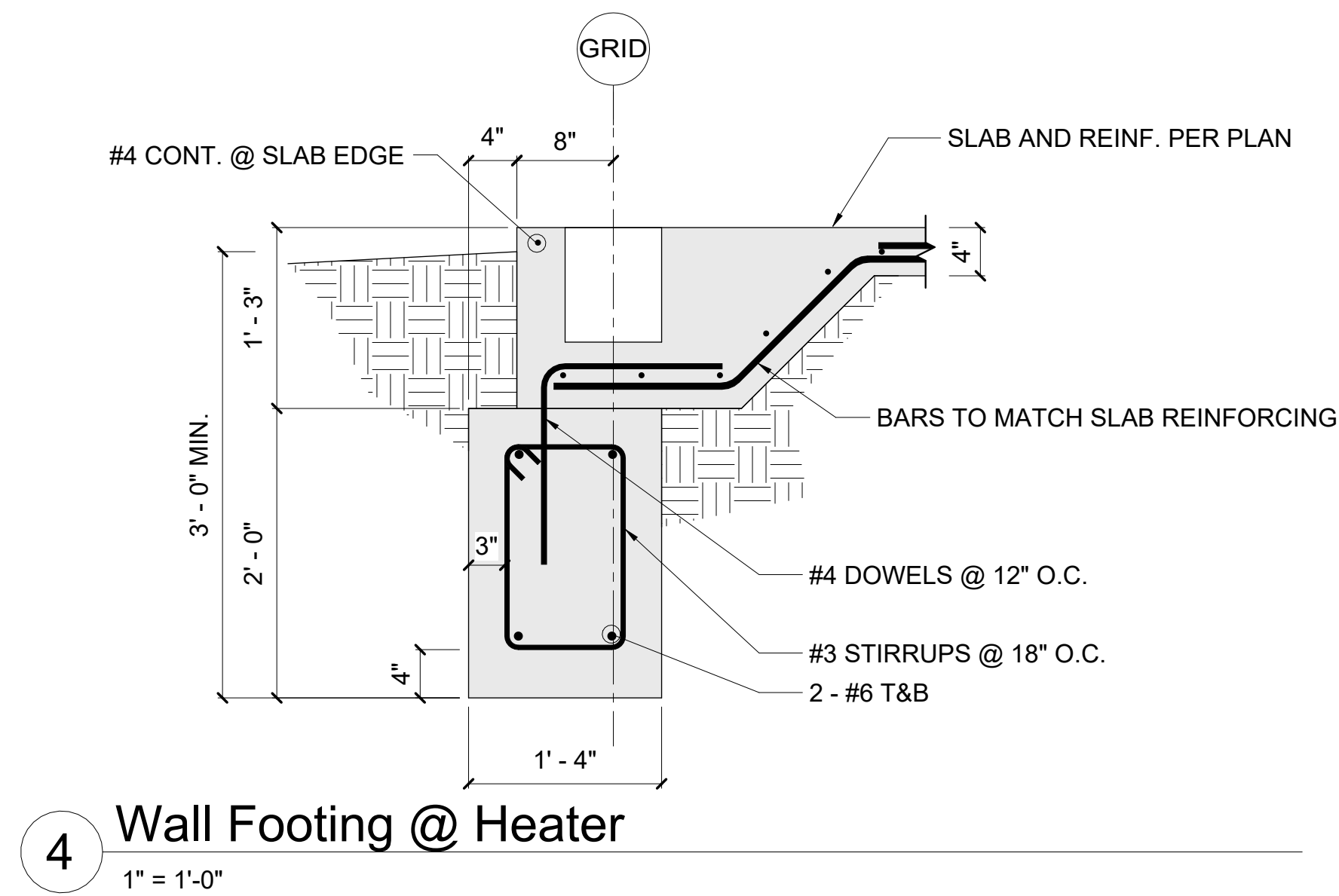
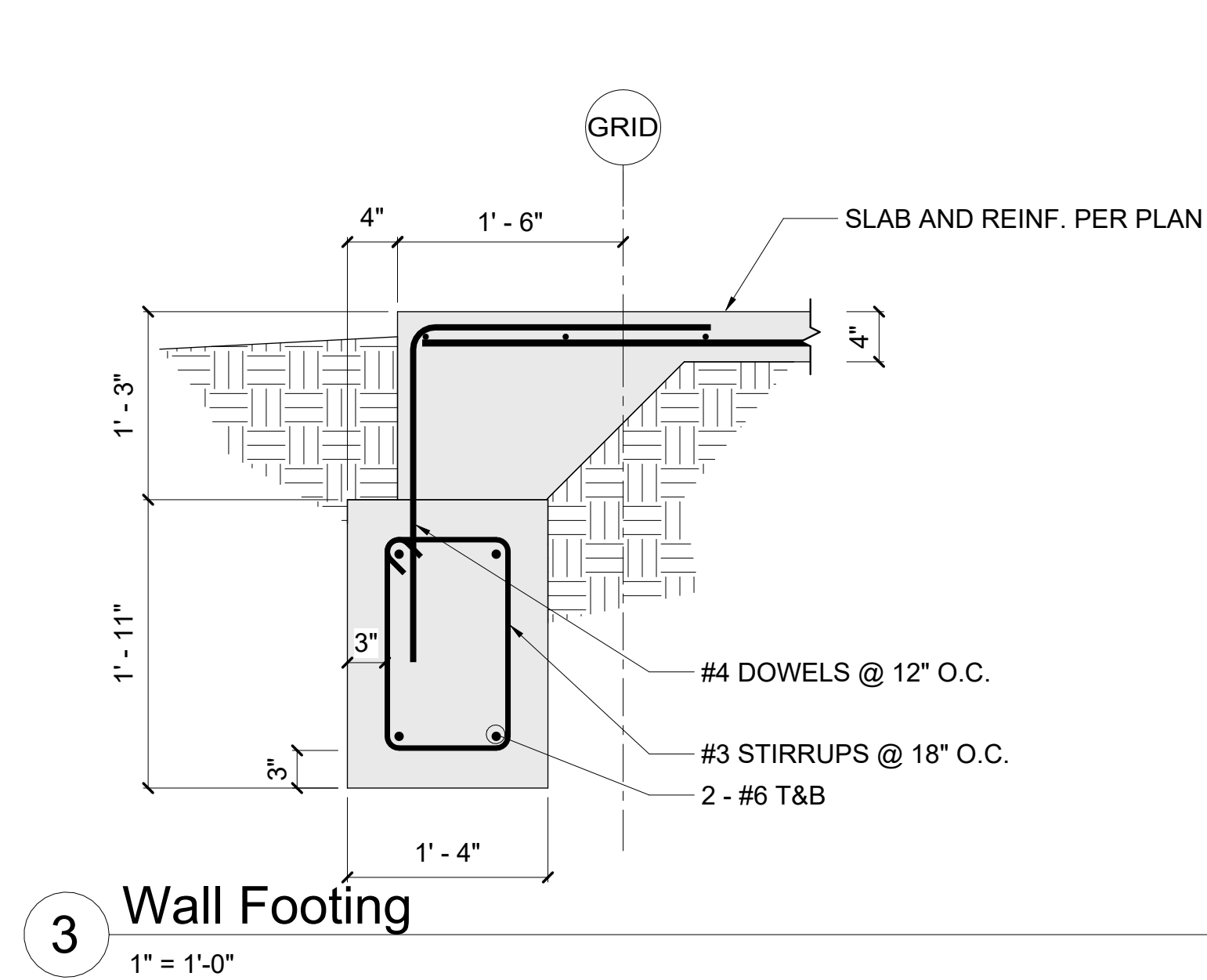
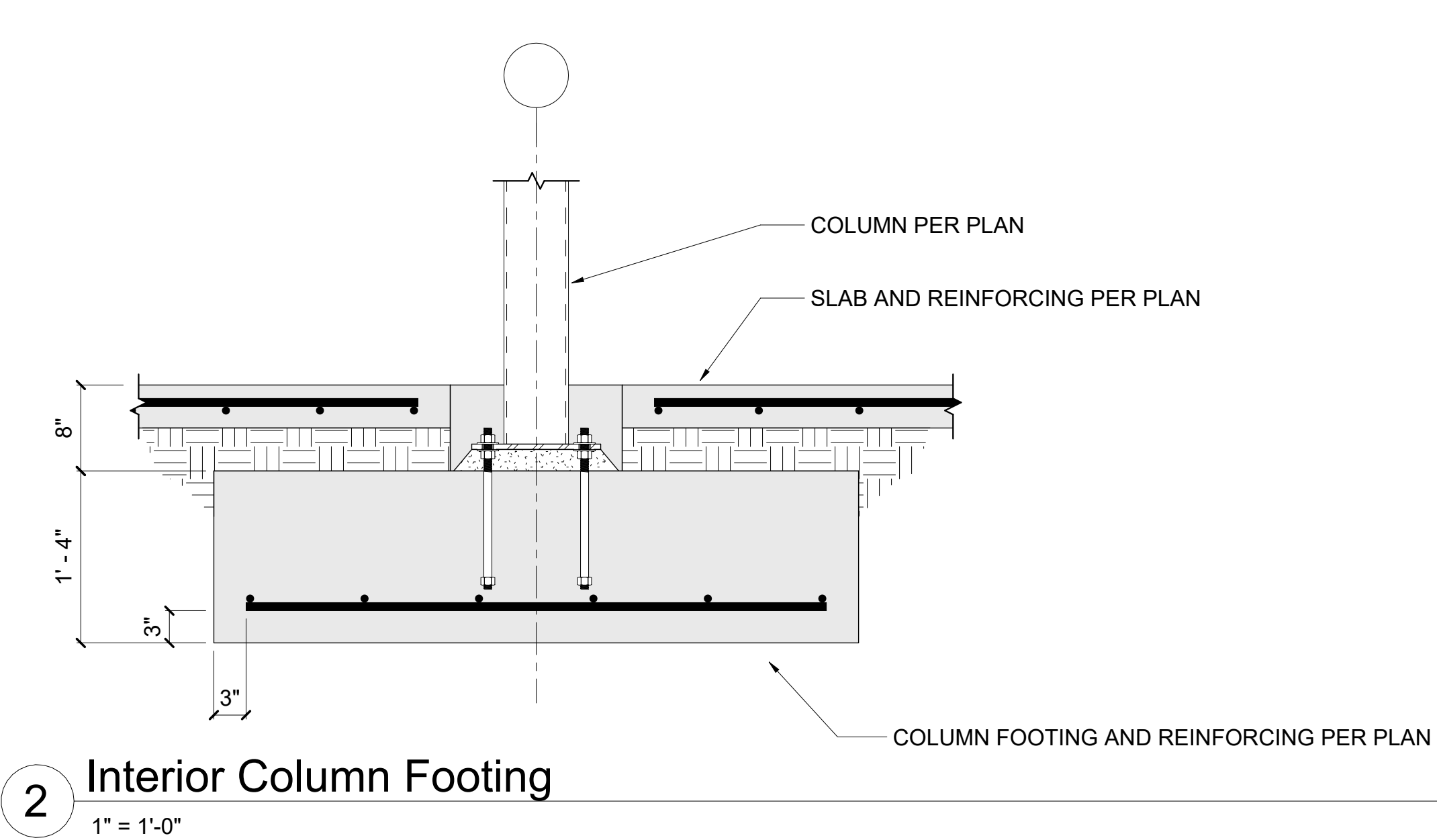
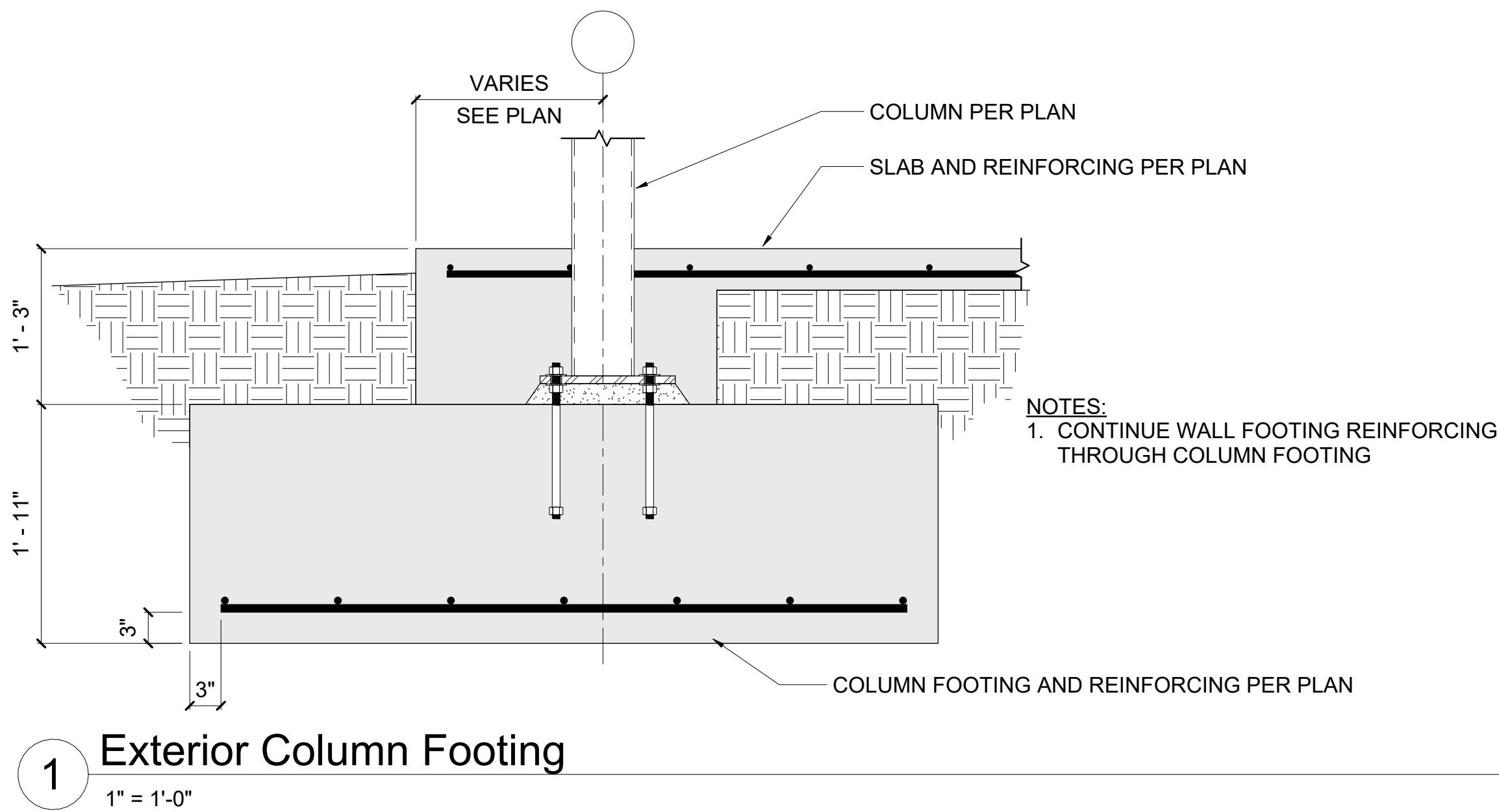
PROJECT NO:	24KC50013
CAD DWG FILE:	Lee's Summit - Hangar 2.rvt
DESIGNED BY:	JDH & BLL
DRAWN BY:	JDH
CHECKED BY:	BLL
APPROVED BY:	
COPYRIGHT	2023

SHEET TITLE

FOUNDATION PLAN

S-101

10/24/2024 4:59:14 PM



1627 MAIN STREET, SUITE 600
KANSAS CITY, MO 64108

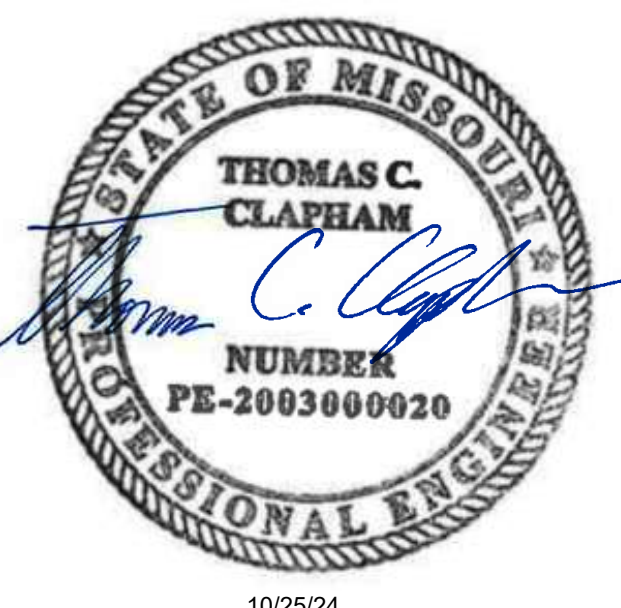


1627 MAIN STREET, SUITE 100
KANSAS CITY, MO 64108



1701 WALNUT STREET, SUITE 300
KANSAS CITY, MO 64108

KC - LEE'S SUMMIT REGIONAL
LEE'S SUMMIT, MISSOURI
GENERAL AVIATION TERMINAL
CITY PORJECT NO. - 17932172



LEES SUMMIT MUNICIPAL AIRPORT AUTHORITY
LEES SUMMIT, MO

MARK DATE DESCRIPTION

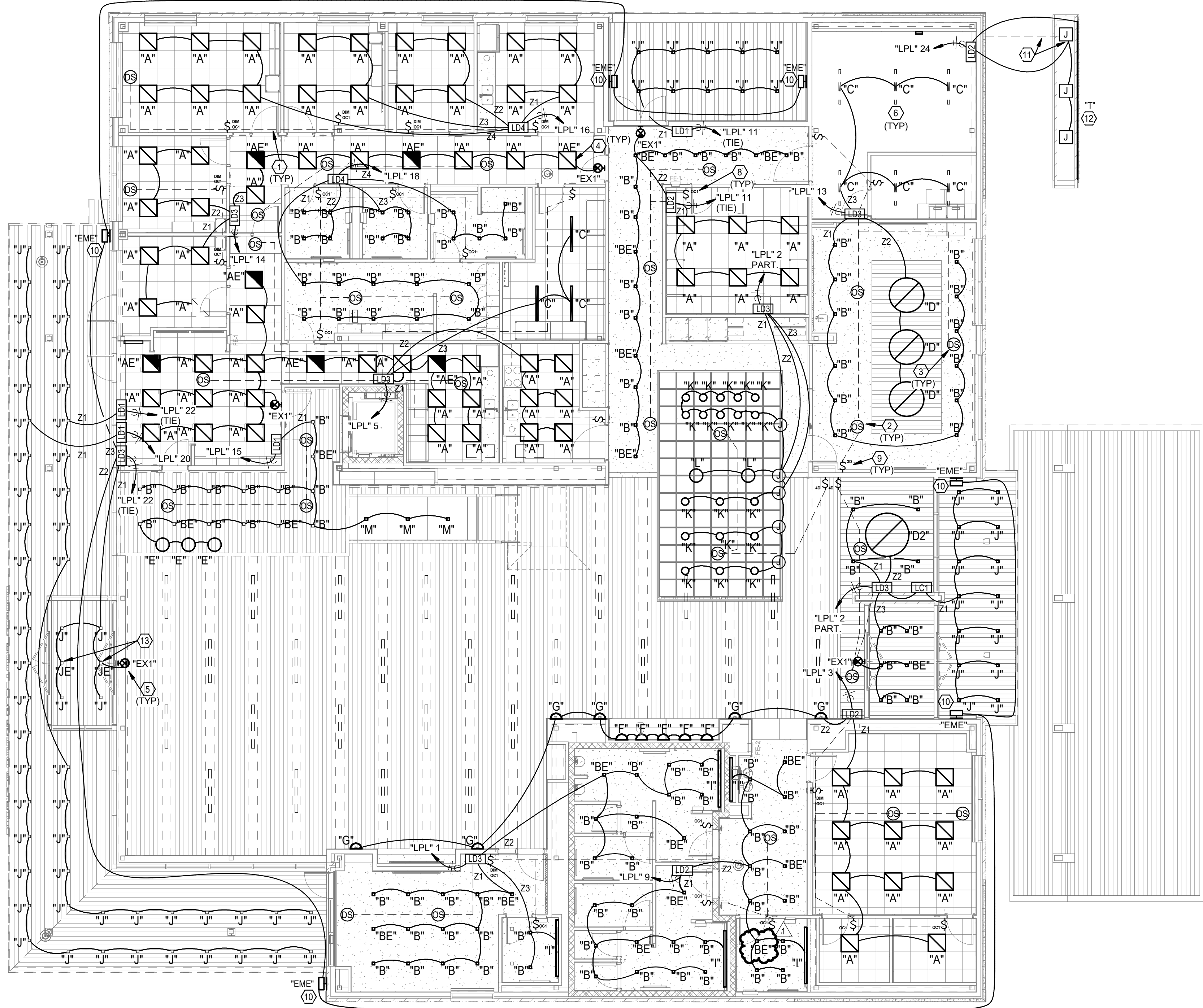
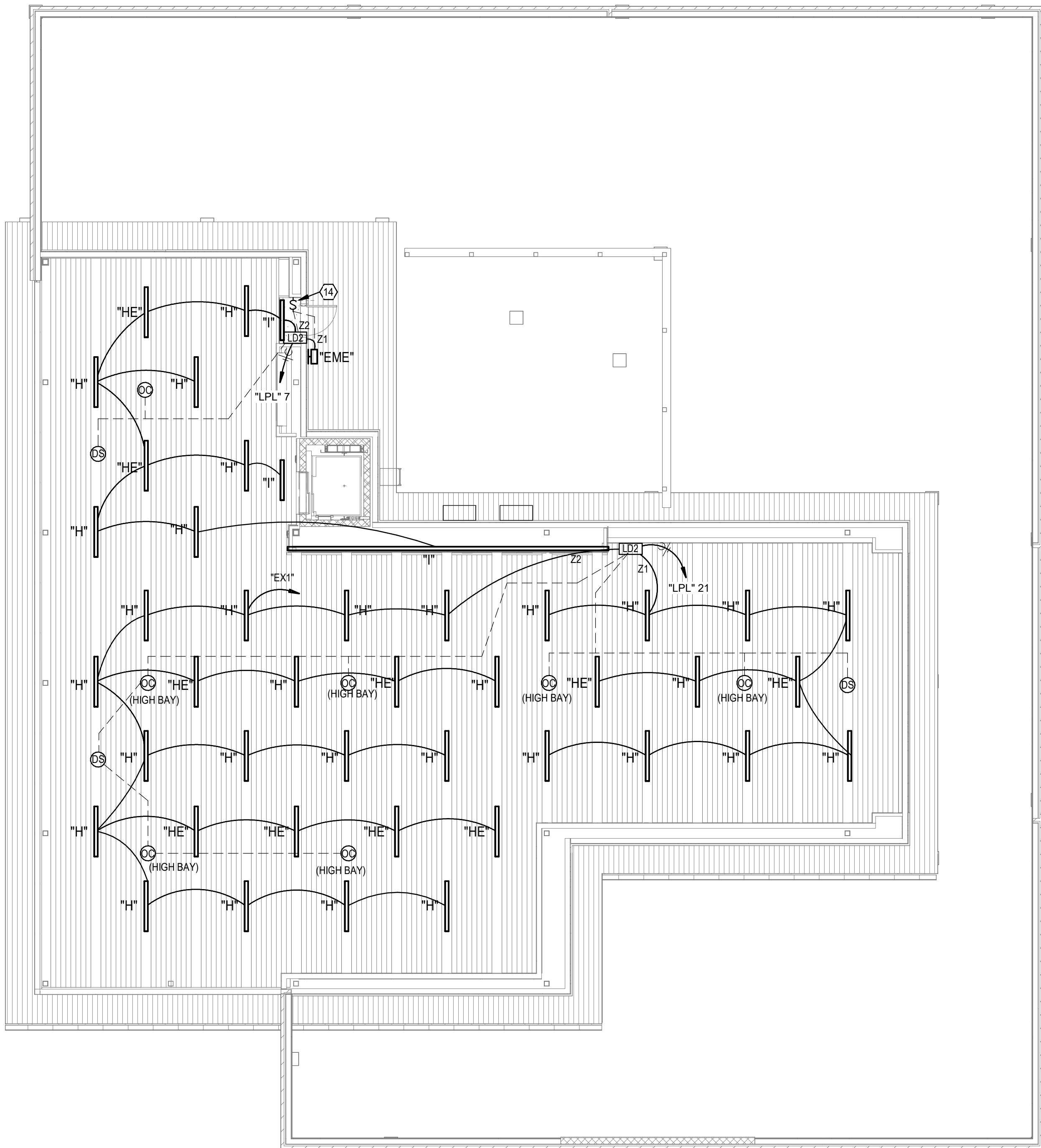
PROJECT NO: 24KC50013
CAD DWG FILE: Lee's Summit - Hangar 2.rvt
DESIGNED BY: JDH & BLL
DRAWN BY: JDH
CHECKED BY: BLL
APPROVED BY:
COPYRIGHT 2023

SHEET TITLE

FOUNDATION DETAILS

S-403

1/20/2025 1:16:56 PM



LIGHTING PLAN NOTES

- ROUTE CAT-6 CABLEING FOR ALL CONTROL DEVICES TO CONTROLLER.
- DUAL TECHNOLOGY (PIRUS) LOW VOLTAGE CEILING OCCUPANCY SENSOR FURNISHED AS PART OF DIGITAL LIGHTING CONTROL SYSTEM. ROUTE COMMUNICATION CABLEING TO CONTROLLER.
- TYPICAL DAYLIGHT HARVESTING SENSOR MOUNTED IN CEILING WITHIN 60" OF WINDOW.
- FIXTURES WITHIN DRYWALL CEILING LID TO BE FURNISHED WITH PLASTER FRAM (TYP. RE: ARCH REFLECTED CEILING PLANS).
- INCLUDE HOT UNSWITCHED CONDUCTOR WITH CIRCUITS THAT POWER EMERGENCY BATTERY PACK.
- SUSPEND LED STRIP FIXTURE WITH CHAINS AT 8'-0" AFF.
- DIGITAL LIGHTING CONTROLLER (1-4 CIRCUIT) MOUNTED ABOVE CEILING ON WALL 12" ABOVE GRID (LD FOR DIMMING, LC FOR GROUP CONTROL).
- TYPICAL DUAL TECHNOLOGY (PIRUS) WALL SWITCH OCCUPANCY SENSOR WITH OVERRIDE OFF AND PUSH TO DIM FURNISHED AS PART OF DIGITAL LIGHTING CONTROL SYSTEM. ROUTE COMMUNICATION CABLEING TO CONTROLLER.
- TYPICAL MULTI-BUTTON DIGITAL SWITCH SENSOR FURNISHED AS PART OF DIGITAL LIGHTING CONTROL SYSTEM. ROUTE COMMUNICATION CABLEING CONTROLLER. PROGRAM PER SEQUENCES FOR DAYLIGHTING, PUSH TO DIM, ETC.
- MOUNT EXTERIOR FIXTURE AT 108" AFF PROVIDE SURFACE MOUNTING PLATE AND CONDUIT ENTRY. EXTERIOR EMERGENCY FIXTURES SHALL COME WITH BUILT-IN PHOTOCELL.
- PROVIDE 2#12, 3/4" UG CONDUIT FROM PANELBOARD SERVING LOAD TO JUNCTION BOX FOR MONUMENT SIGN POWER. FINAL CONNECTION BY MONUMENT SIGN VENDOR.
- LED STRIP LIGHTING ON FRONT OF MONUMENT SIGN. RE: ARCH DRAWINGS FOR ADDITIONAL DETAILS.
- PROVIDE "IE" TYPE LIGHT FIXTURE WITH SURE-LITES E8PLED EMERGENCY BATTERY PACK RE: DETAIL 6/E-400.
- MANUAL OVERRIDE SWITCH FOR EXTERIOR MEZZANINE "EME" LIGHT FIXTURE. SWITCH TO ALLOW FIXTURE TO REMAIN OFF IN NORMAL OPERATION AND TURN ON VIA SWITCH OR EMERGENCY POWER.

LIGHTING GENERAL NOTES

- ALL ELECTRICAL WORK SHALL BE IN ACCORDANCE WITH THE LOCAL VERSION OF THE NATIONAL ELECTRIC CODE AND NFPA AS ADOPTED BY THE AUTHORITY HAVING JURISDICTION.
- COORDINATE CLOSELY WITH ALL OTHER TRADES TO EXPEDITE CONSTRUCTION AND AVOID INTERFERENCES AND CONFLICTS BEFORE ANY PIPING, DUCTWORK, CONDUIT, ETC. IS INSTALLED. IT SHALL BE COORDINATED CAREFULLY BETWEEN ALL TRADES.
- CONTRACTOR SHALL GUARANTEE ALL EQUIPMENT, ACCESSORIES, AND MATERIAL FURNISHED BY THEM FOR A PERIOD OF ONE YEAR FROM FINAL ACCEPTANCE AGAINST ALL DEFECTORS.
- VERIFY IN FIELD THE LOCATION OF ALL STRUCTURAL MEMBERS. CEILINGS ARE SHOWN SCHEMATICALLY FROM ARCHITECTURAL PLANS.
- ROUTE ALL CONDUIT TIGHT TO STRUCTURE.
- LIGHT FIXTURES DESIGNATED WITH THE LETTER "E" (IE, "DE", "BE", ETC.) SHALL BE CONNECTED TO CIRCUIT SHOWN THAT SHALL AUTOMATICALLY SWITCH TO EMERGENCY POWER IN THE EVENT OF A NORMAL POWER LOSS.
- PROVIDE ALL LED DIMMABLE FIXTURES WITH 0-10V DIMMABLE DRIVERS.
- REFER TO SHEET E-400 FOR DIMMING SWITCH BANKS.
- EXIT LIGHTS SHALL BE CIRCUITED TO UNSWITCHED HOT, TYPICAL ALL EXITS THROUGHOUT.



1627 MAIN STREET, SUITE 600
KANSAS CITY, MO 64108



1627 MAIN STREET, SUITE 100
KANSAS CITY, MO 64108



1701 WALNUT STREET, SUITE 300
KANSAS CITY, MO 64108

KC - LEE'S SUMMIT REGIONAL
LEE'S SUMMIT, MISSOURI
GENERAL AVIATION TERMINAL
CITY PORJECT NO. - 17932172



Cory Wilson - MO #PE-2010009876
Certificate of Authority - MO #2024005146
01-02-2025

LEES SUMMIT MUNICIPAL AIRPORT
LEES SUMMIT, MO

MARK DATE DESCRIPTION
A 01.03.25 CITY REVIEW COMMENTS

PROJECT NO: 2403
CAD DWG FILE: Lee's Summit - Hangar 2.rvt
DESIGNED BY: CMW
DRAWN BY: MR
CHECKED BY: WAI
APPROVED BY: APPROVER
COPYRIGHT 2023

SHEET TITLE

LIGHTING PLANS

E-100

SHEET OF