

MO  
 Prepared By:  
 Matthew J. Schlicht  
 PLS-2012000102

Tract Description

A tract of land being located in Section 8, Township 47, Range 31, Lee's Summit, Jackson County Missouri, being more particularly described as follows:

Commencing at the Southwest Corner of said Section 8; thence S87°43'36"E, a distance of 40.95 feet, along the South line of said Section 8; thence N2°16'24"E, a distance of 772.60 feet to the Point of Beginning; thence N2°32'33"E, a distance of 324.89 feet; thence N2°32'32"E, a distance of 213.84 feet; thence N24°19'04"E, a distance of 47.09 feet; thence N87°50'52"W, a distance of 104.46 feet; thence S3°13'41"W, a distance of 16.70 feet; thence N88°06'24"W, a distance of 185.12 feet; thence S2°24'43"W, a distance of 25.00 feet; thence S88°06'24"E, a distance of 204.20 feet; thence S2°32'24"W, a distance of 286.35 feet; thence along a curve to the right having an Initial Tangent Bearing of S32°34'12"E and a radius of 330.00 feet, an arc distance of 202.23 feet; thence S87°48'18"E, a distance of 8.00 feet to the Point of Beginning.

Tract Contains 33,819.28 sf (0.776 Acres)

Point of Commencement  
 SW Corner of Sec. 8,  
 Township 47 N,  
 Range 31 W  
 Fnd Alum Mon

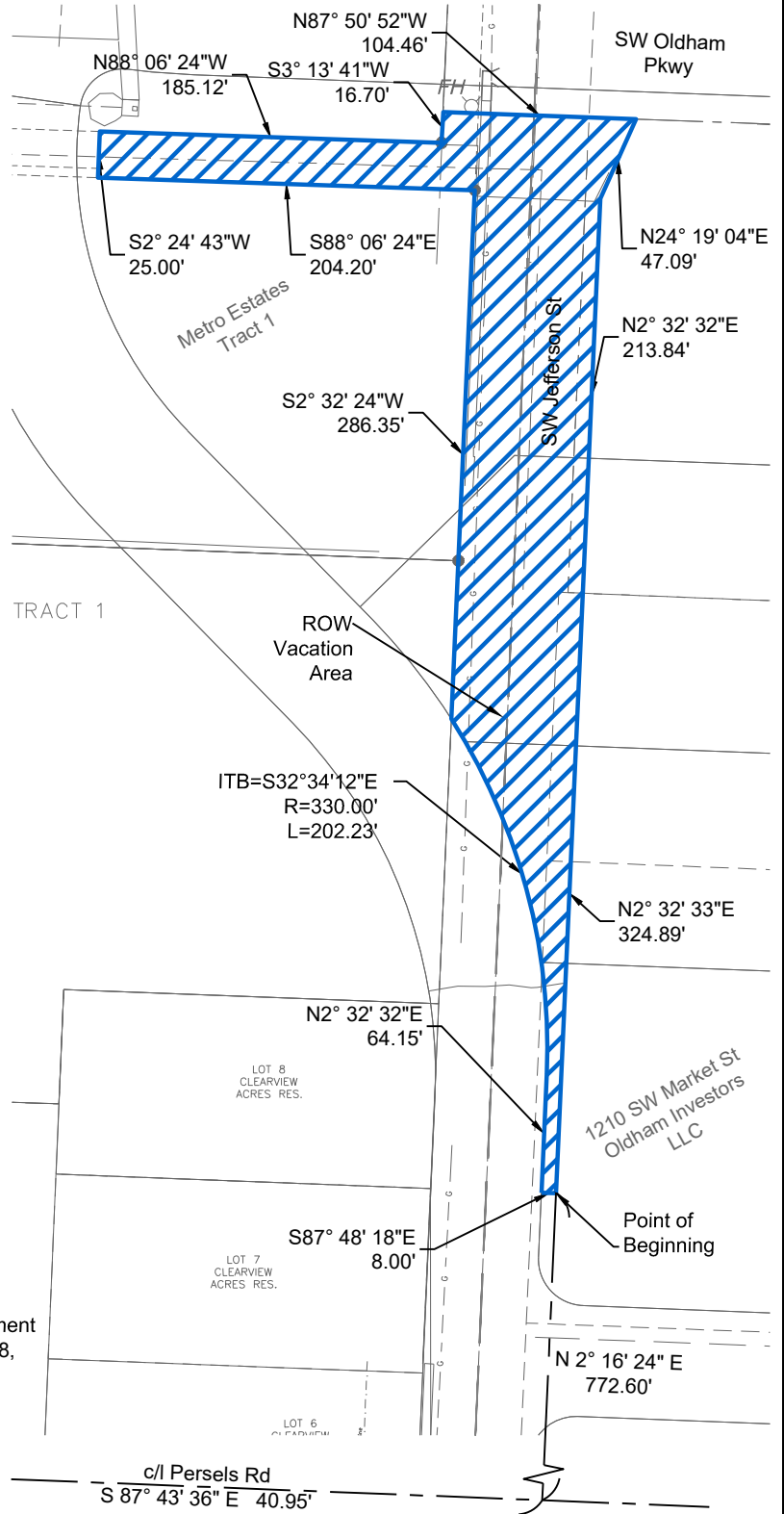


Exhibit  
**ROW  
 Vacation  
 Exhibit**  
 SHEET 1 OF 1

DATE: 12/12/2024  
 PROJECT NUMBER: Oldham Village  
 REV. TO DWG.: N/A  
 SCALE: 1"=100'

Exhibit  
**Oldham Village**  
 ROW Vacation  
 Lee's Summit, Jackson County, Missouri



**ENGINEERING & SURVEYING SOLUTIONS**  
 50 SE 30TH STREET  
 LEE'S SUMMIT, MO 64082  
 P:(816) 623-9888 F:(816)623-9849