

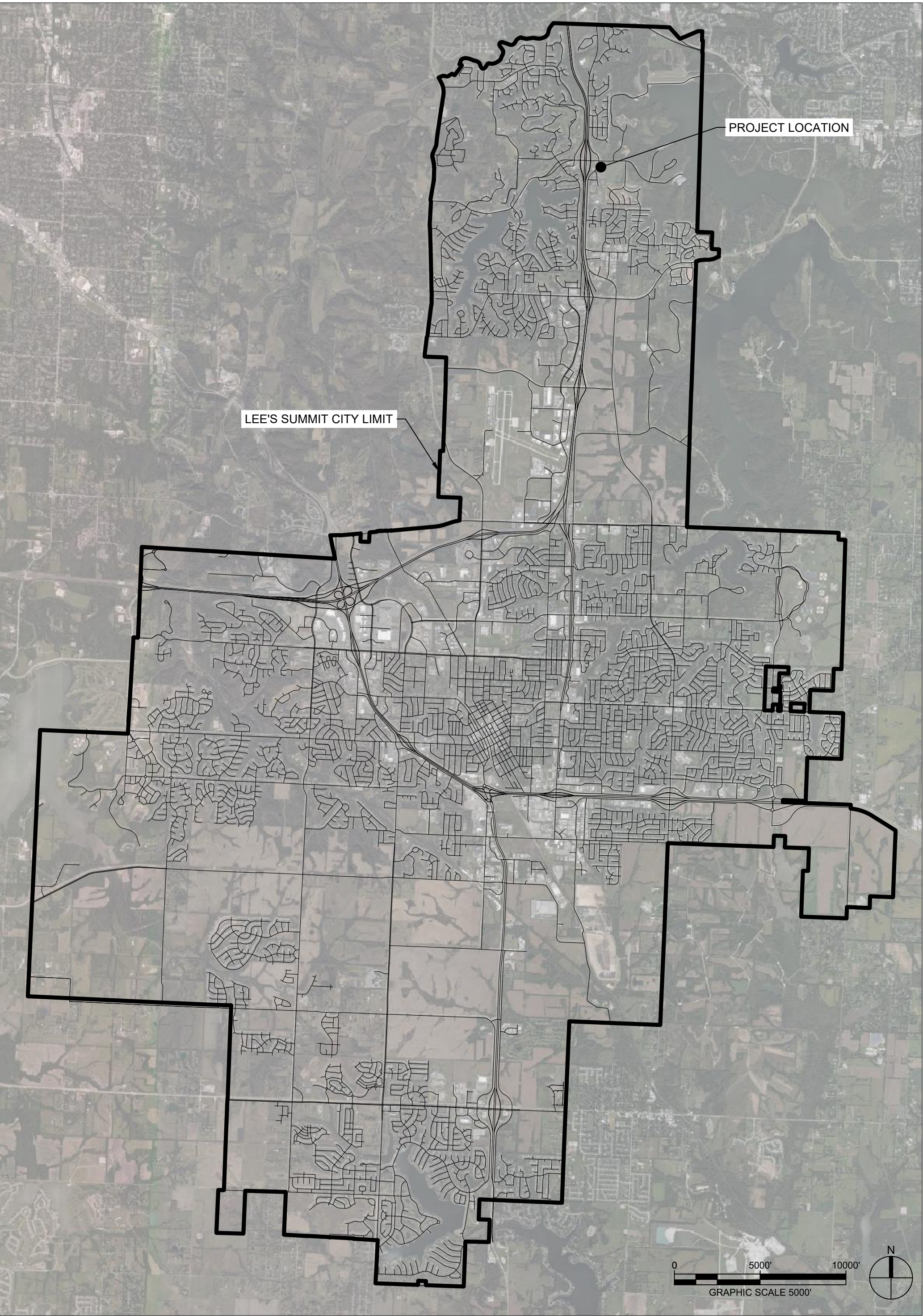
LEE'S SUMMIT FIRE STATION NO. 4
5031 NORTHEAST LAKEWOOD WAY
LEE'S SUMMIT, MISSOURI 64064
PUBLIC OFFSITE STORM SEWER

CONSULTANT:

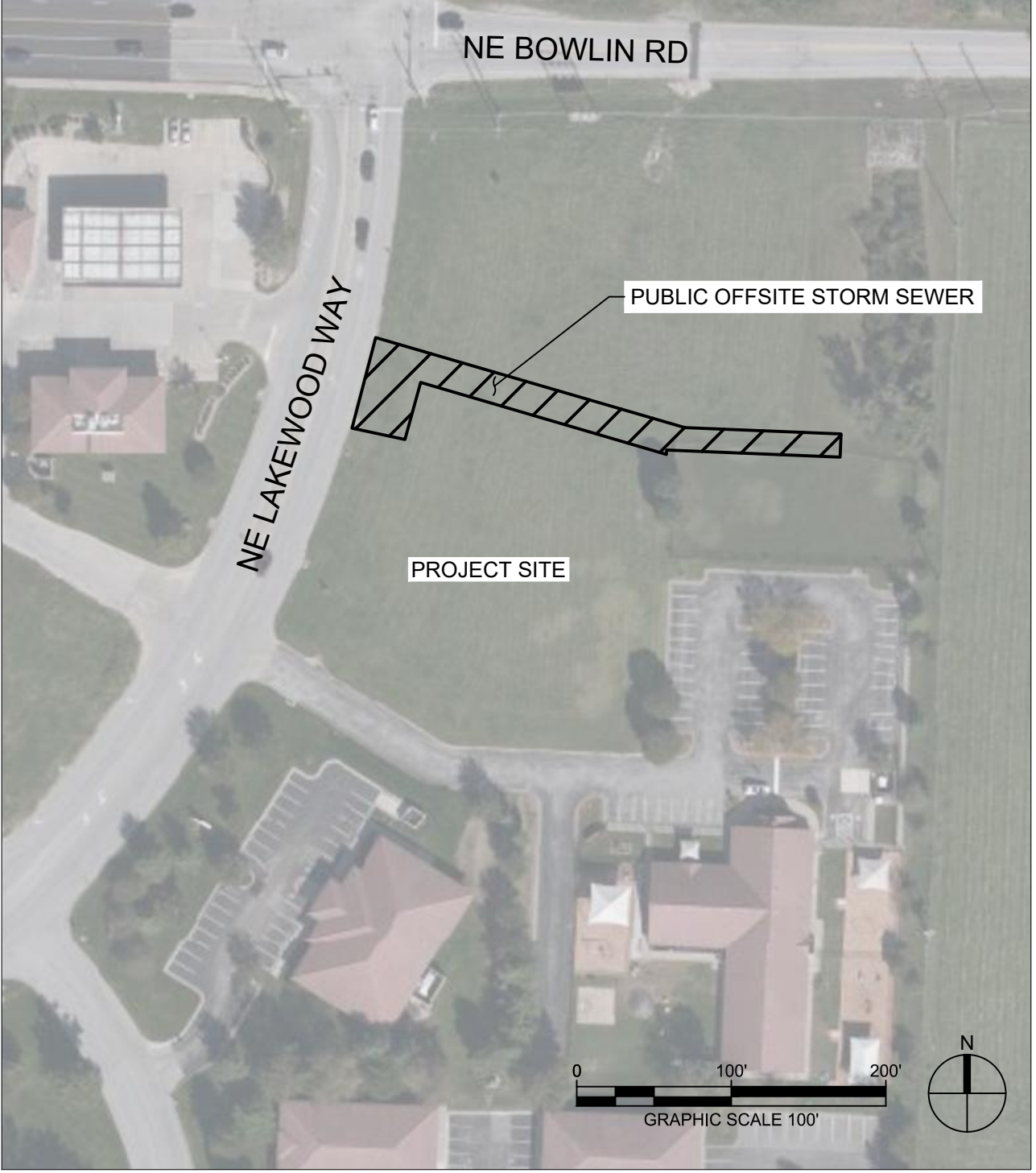


9229 WARD PKWY
KANSAS CITY, MISSOURI 64114
DERICK HOLMES
derick.holmes@glmv.com
T (816) 444-4200

VICINITY MAP



SITE LOCATION MAP



INDEX OF DRAWINGS

SHEET NO.	SHEET NAME
C-002	COVER SHEET
C-230	PUBLIC STORMWATER PROFILES
C-530	STORMWATER DETAILS
C-540	SANITARY SEWER DETAILS

Record Drawing



#	Description	Date
3	ASI 03	12.08.2022

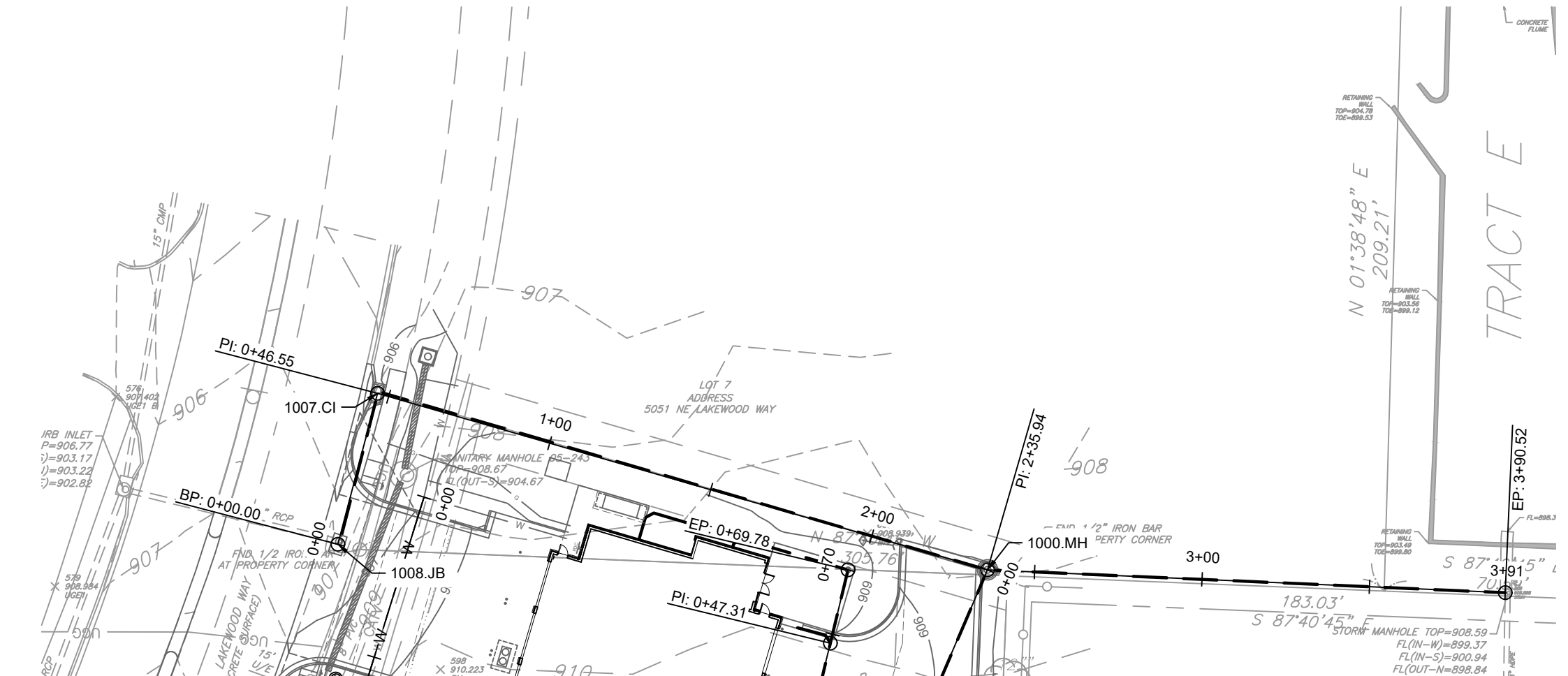
RECORD
DRAWINGS

PROJECT NO: 18225R21001
DATE: 12.08.2022

COVER
SHEET

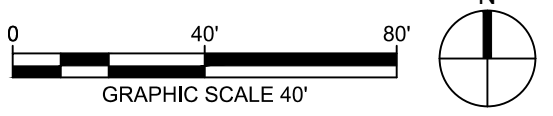
C-002

D

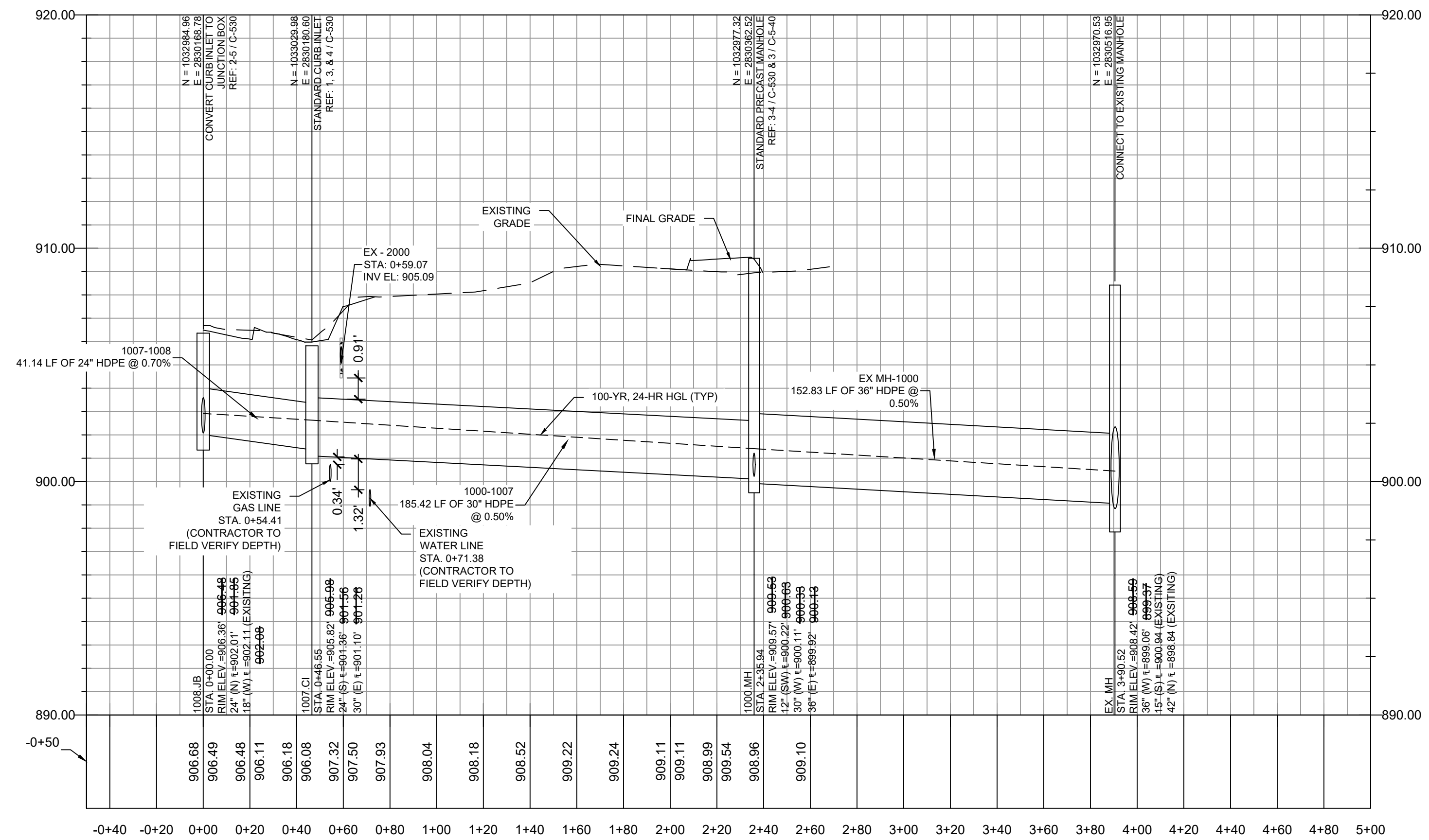


1 EX MH - 1008.JB PLAN

SCALE: 1"=40'



C



2 EX MH - 1008.JB PROFILE

SCALE: HORIZONTAL 1"=40' SCALE: VERTICAL 1"=4'

A

100-YR, 24-HR STORM EVENT													
PIPE NAME	UPSTREAM NODE	DOWNSREAM NODE	LENGTH (FT)	INLET INVERT ELEVATION (FT)	OUTLET INVERT ELEVATION (FT)	SLOPE (%)	PIPE DIAMETER (INCHES)	MANINGG'S ROUGHNESS (N)	ENTRANCE LOSSES	EXIT/BEND LOSSES	PEAK FLOW (CFS)	TIME OF PEAK FLOW OCCURRENCE (DAYS HH:MM)	MAX FLOW VELOCITY (FT/SEC)
EX-MH-1000	1000.MH	EX-MH	152.83	900.13	899.37	0.50	36	0.012	0.50	0.90	14.11	0 12:05	6.17
1000-1007	1007.CI	1000.MH	185.42	901.26	900.33	0.50	30	0.012	0.50	0.80	12.23	0 12:05	6.05
1007-1008	1008.JB	1007.CI	41.14	901.85	901.56	0.70	24	0.012	0.50	0.80	11.50	0 12:00	6.74

100-YR, 24-HR STORM EVENT	
STRUCTURE NAME	MAX HGL ELEVATION (FT)
EX. MH	900.45
1000.MH	901.41
1007.CI	902.63
1008.JB	902.92

GENERAL NOTES:

- CONSTRUCTION OF STORMWATER IMPROVEMENTS SHALL BE AS PER CITY OF LEE'S SUMMIT, MO STANDARD SPECIFICATIONS AND STANDARD SPECIAL PROVISIONS.
- THE INFORMATION SHOWN ON THESE PLANS CONCERNING THE TYPE AND LOCATION OF UNDERGROUND UTILITIES IS NOT GUARANTEED TO BE ACCURATE OR ALL INCLUSIVE. THE CONTRACTOR IS RESPONSIBLE FOR CONTACTING ALL UTILITY COMPANIES FOR FIELD LOCATION OF ALL UNDERGROUND UTILITY LINES PRIOR TO ANY EXCAVATION AND FOR MAKING HIS OWN VERIFICATION AS TO TYPE AND LOCATION OF UNDERGROUND UTILITIES AS MAY BE NECESSARY TO AVOID DAMAGE THERETO.
- PROTECT ALL COMPONENTS DURING DEMOLITION / CONSTRUCTION PROCESS. MAINTAIN BMP'S THROUGHOUT THE DURATION OF CONSTRUCTION.
- CONTRACTOR TO PROVIDE DETAILED AS-BUILT DRAWINGS TO OWNER, ENGINEER, AND CITY OF LEE'S SUMMIT, MO UPON COMPLETION OF ALL IMPROVEMENTS.



9229 WARD PARKWAY
SUITE # 210
KANSAS CITY, MO 64114
TEL: (816) 444-4200
FAX: (316) 265-5646
www.glmv.com

GLMV ARCHITECTURE, INC.
MISSOURI STATE CERTIFICATE OF AUTHORITY
#00008

CIVIL ENGINEER & LANDSCAPE ARCH.
GLMV ARCHITECTURE, INC.
MISSOURI CIVIL COA #2019033898
MISSOURI LANDSCAPE COA #000008
9229 WARD PARKWAY, SUITE # 210
KANSAS CITY, MO 64114
TEL: (816) 444-4200

STRUCTURAL ENGINEER
LEIGH + O'KANE
MISSOURI COA #001644
250 NE MURBERRY, SUITE 201
LEE'S SUMMIT, MO, 64086
(816) 444-3144 PHONE


MECH. ELEC. & PLUMBING ENGINEERS
HOSS & BROWN ENGINEERS
MISSOURI COA #01022
15902 MIDLAND DRIVE
SHAWNEE, KS 66217
(913) 362-9090 PHONE

SECURITY & IT ENGINEERS
HENDERSON ENGINEERS
MISSOURI COA # 000556
1601 MAIN STREET, SUITE 300
KANSAS CITY, MO 64108
(816) 663-8700 PHONE

FIRE STATION #4
CITY OF LEE'S SUMMIT

5031 NORTHEAST LAKEWOOD WAY
LEE'S SUMMIT, MISSOURI 64064

#	Description	Date
1	ASI 01	11.16.2022
3	ASI 03	12.08.2022



DERICK M. HOLMES
NUMBER
PE-2022005196
11/20/2024

DERICK HOLMES - CIVIL ENGINEER
MOR PE-2022005196

The Professional Engineers and Affiliates to this sheet applies only to the material and items shown on this sheet. It is not to be copied or used in any way without the express written consent of GLMV Architecture, Inc.

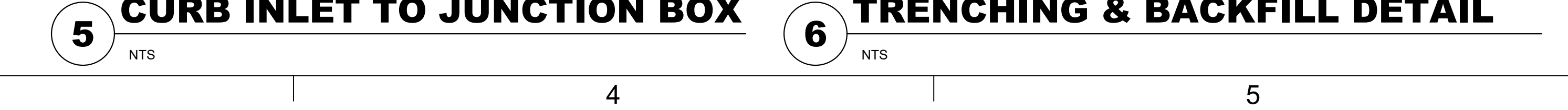
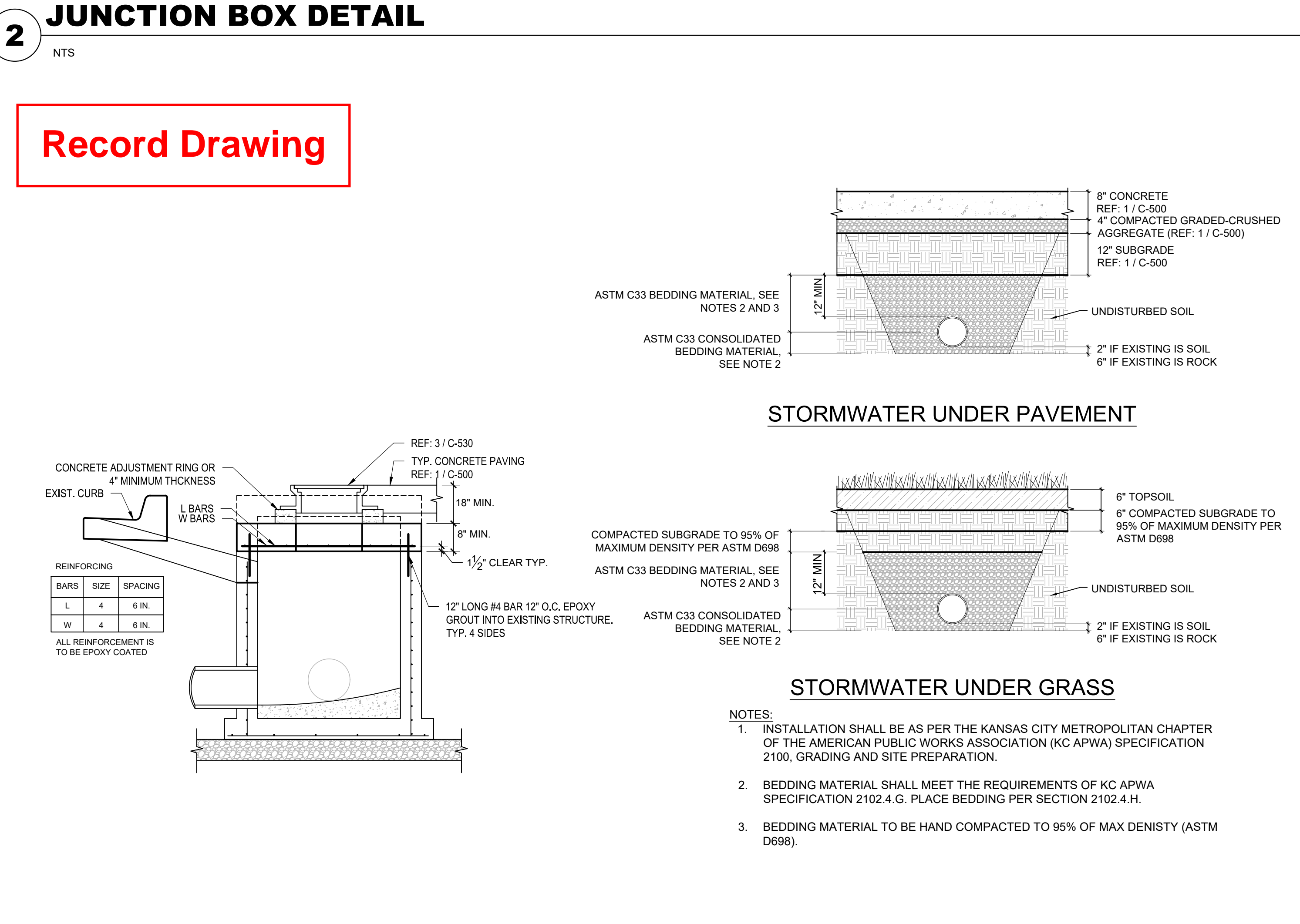
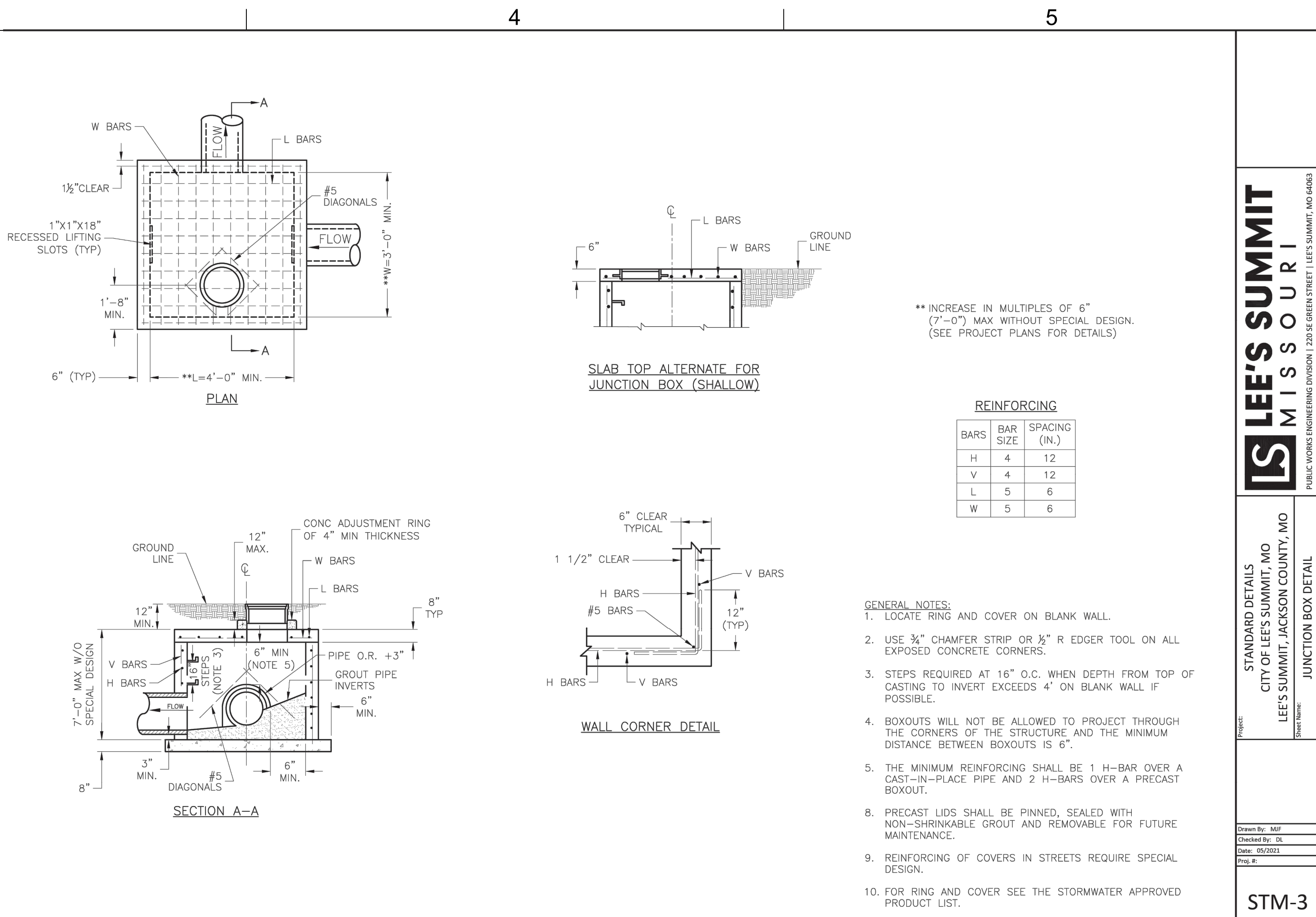
PROJECT NO:	18225R21001
DATE:	10.19.2022
DRAWN BY:	HFL
CHKD BY:	CDW



© GLMV Architecture, Inc.
All work herein is the property of GLMV Architecture, Inc. and is not to be copied or used in any way without the express written consent of GLMV Architecture, Inc.

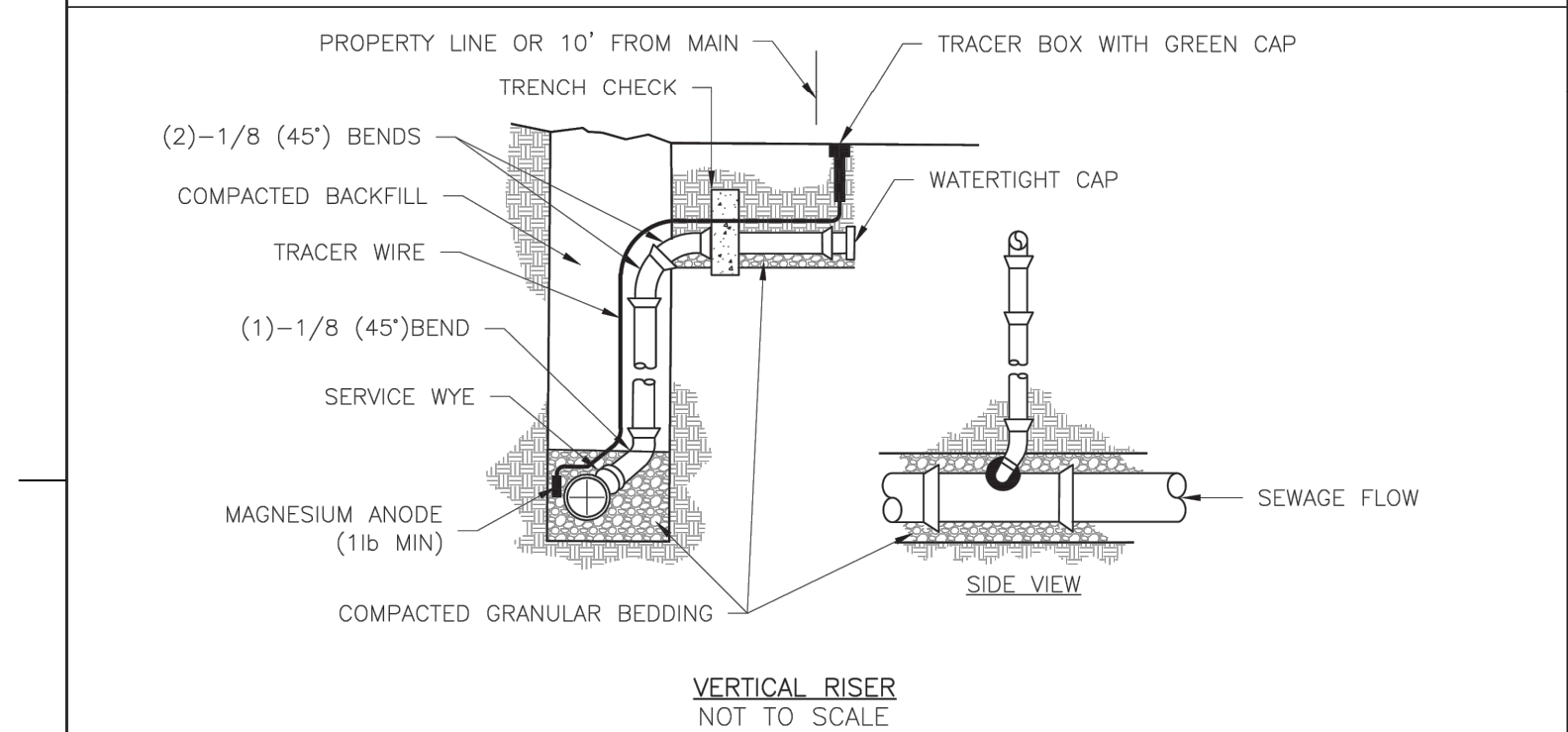
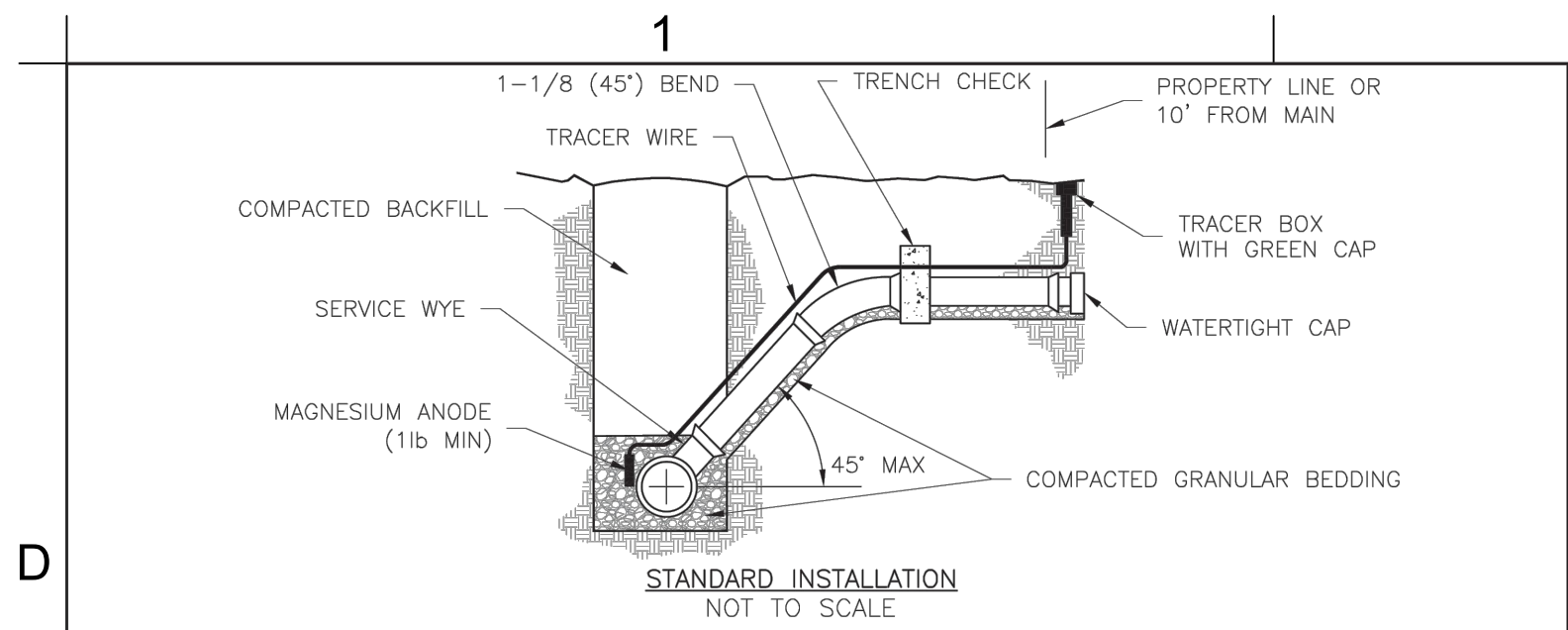
**PUBLIC
STORMWATER
PROFILES**

C-230

Record Drawing



<div> GLMV Architecture</div> <div>9229 WARD PARKWAY SUITE # 210 KANSAS CITY, MO 64114 TEL: (816) 444-4200 FAX: (316) 285-5646 www.glmv.com</div> <div>GLMV ARCHITECTURE, INC. MISSOURI STATE CERTIFICATE OF AUTHORITY W00035</div>		
CIVIL ENGINEER & LANDSCAPE ARCH. GLMV ARCHITECTURE, INC. MISSOURI CIVIL COA #2018033898 MISSOURI LANDSCAPE COA #000008 9229 WARD PARKWAY, SUITE # 210 KANSAS CITY, MO 64114 TEL: (816) 444-4200		
STRUCTURAL ENGINEER LEIGH + OKANE MISSOURI COA #001644 250 NE MURBERRY, SUITE 201 LEE'S SUMMIT, MO. 64086 (816) 444-3144 PHONE		
MECH., ELEC. & PLUMBING ENGINEERS HOSS & BROWN ENGINEERS MISSOURI COA #01022 15902 MIDLAND DRIVE SHAWNEE, KS 66217 (913) 362-9090 PHONE		
SECURITY & IT ENGINEERS HENDERSON ENGINEERS MISSOURI COA # 000556 1801 MAIN STREET, SUITE 300 KANSAS CITY, MO 64108 (816) 663-8770 PHONE		
FIRE STATION #4 CITY OF LEE'S SUMMIT 5031 NORTHEAST LAKEWOOD WAY LEE'S SUMMIT, MISSOURI 64064		RECORD DRAWINGS
REVISONS:		
#	Description	Date
1	ASI 01	11.16.2022
3	ASI 03	12.08.2022
<div> 11/20/2024</div> <div>DERICK HOLMES - CIVIL ENGINEER MOM PE-2022005196 <small>The Professional Engineers seal is offered to this sheet applies only to the material and items shown on this sheet. All drawings, statements or other documents not exhibiting this seal, shall not be considered prepared by this engineer, and the engineer assumes no liability and is not responsible for such plan, drawings, or documents not exhibiting this seal.</small></div>		
PROJECT NO:		18225R21001
DATE:		10.19.2022
DRAWN BY:		DMH
CHECKED BY:		SJB
<div>© GLMV Architecture, Inc. All work herein is the property of GLMV Architecture, Inc. and is not to be copied or used in any way without the express written consent of GLMV Architecture, Inc.</div>		
STORMWATER DETAILS		
C-530		
<small>PLEASE CONSIDER THE ENVIRONMENT BEFORE PRINTING THIS</small>		



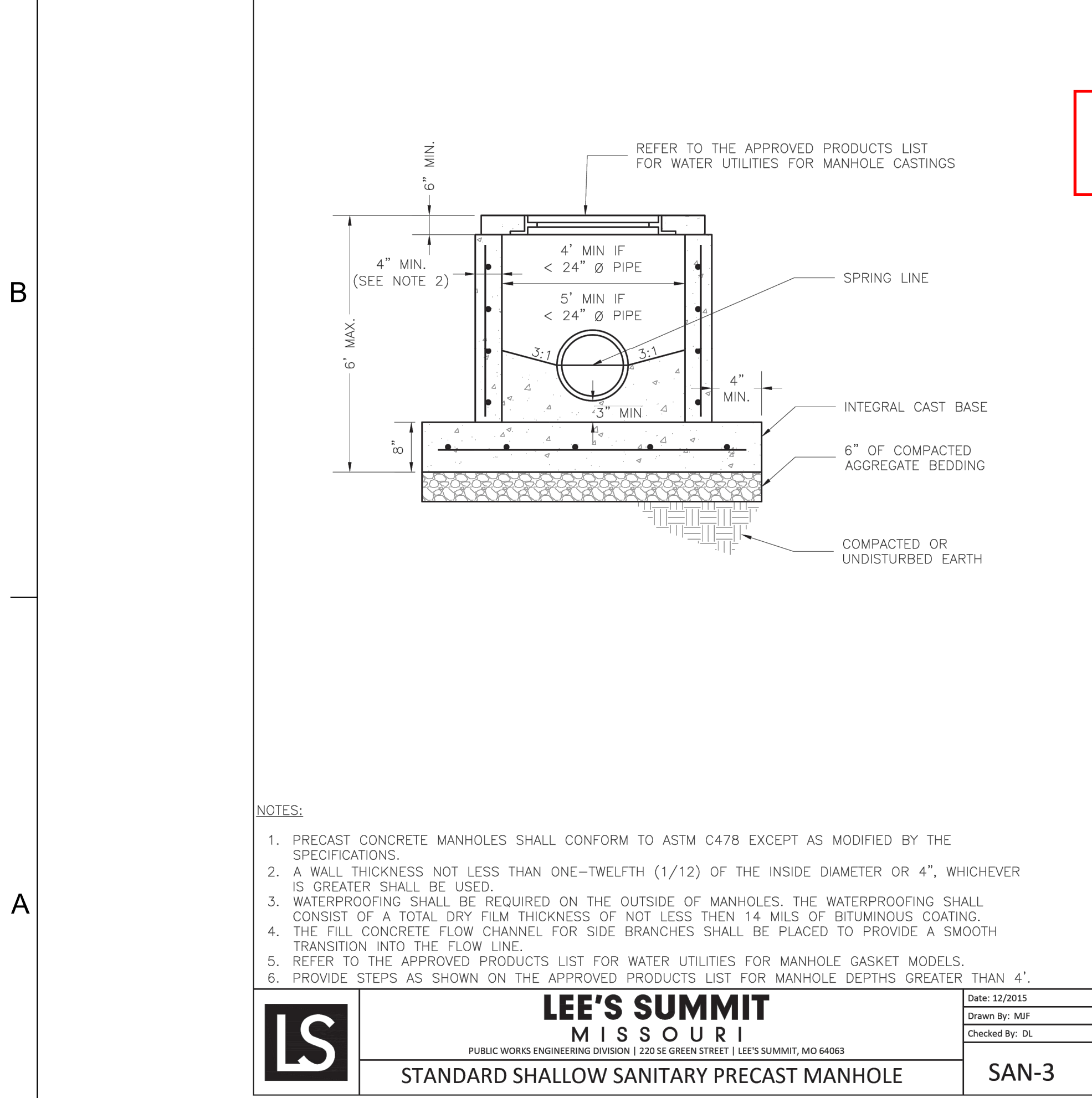
NOTES:

1. ALL SEWER STUBS SHALL BE CONSTRUCTED TO PROPERTY LINE OR 10' MINIMUM FROM THE MAIN, WHICHEVER IS GREATER. WHERE SIDEWALKS ARE PRESENT, CONTRACTOR SHALL EXTEND SERVICE LINE UNDER EXISTING SIDEWALK TO TWO FEET BEYOND.
2. IMPERVIOUS TRENCH CHECKS SHALL BE PLACED ON BUILDING SEWER STUBS (AT LEAST 5' AWAY FROM THE SANITARY SEWER MAIN).
3. TRENCH CHECKS ON THE BUILDING SEWER STUBS SHALL EXTEND 6" BELOW THE BOTTOM OF THE PIPE. LENGTH SHALL BE A MINIMUM OF 12". THE HEIGHT OF THE TRENCH CHECK SHALL EXTEND 12" ABOVE THE TOP OF THE PIPE. THE WIDTH OF THE TRENCH CHECK SHALL BE THE WIDTH OF THE PIPE.
4. SEE SPECIFICATION SECTION 2100 FOR SEWER MAIN BEDDING AND BACKFILL.
5. #12 GAUGE GREEN INSULATED COPPER TRACER WIRE SHALL BE INSTALLED. TRACER WIRE TERMINAL BOXES SHALL BE INSTALLED DIRECTLY ABOVE THE SEWER SERVICE OR AS DETERMINED BY THE ENGINEER.
6. FOR SERVICES, TRACER WIRE SHALL RUN FROM THE WYE AND TERMINATE IN A FLUSH MOUNTED TRACER BOX WITH A GREEN CAST IRON LOCKABLE TOP. WIRE SHALL BE TAPED OR TIED TO THE PIPE AT 5' INTERVALS.
7. TRACER WIRE BOX SHALL BE INSTALLED WITHIN 1.0' OF PROPERTY LINE.
8. THE TRACER WIRE SHALL REMAIN CONTINUOUS TO THE GREATEST EXTENT POSSIBLE. SPLICES IN THE TRACER WIRE SHOULD BE MADE WITH SPLIT BOLT CONNECTORS. WIRE NUTS SHALL NOT BE USED. A WATER-PROOF CONNECTION IS NECESSARY TO PREVENT CORROSION.

LEE'S SUMMIT MISSOURI
PUBLIC WORKS ENGINEERING DIVISION | 220 SE GREEN STREET | LEE'S SUMMIT, MO 64063
SANITARY SEWER STUB DETAIL
SAN-1

1 SANITARY SEWER STUB

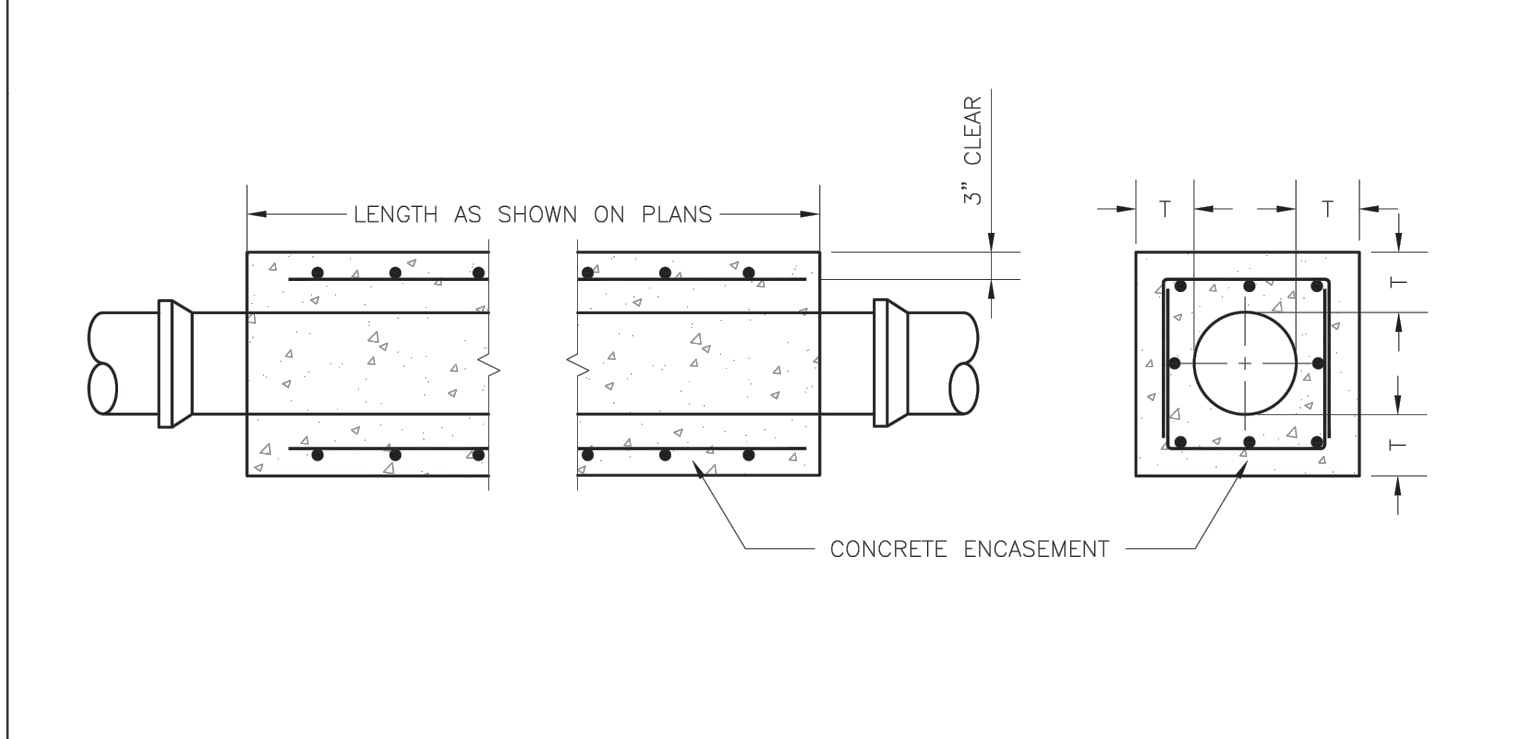
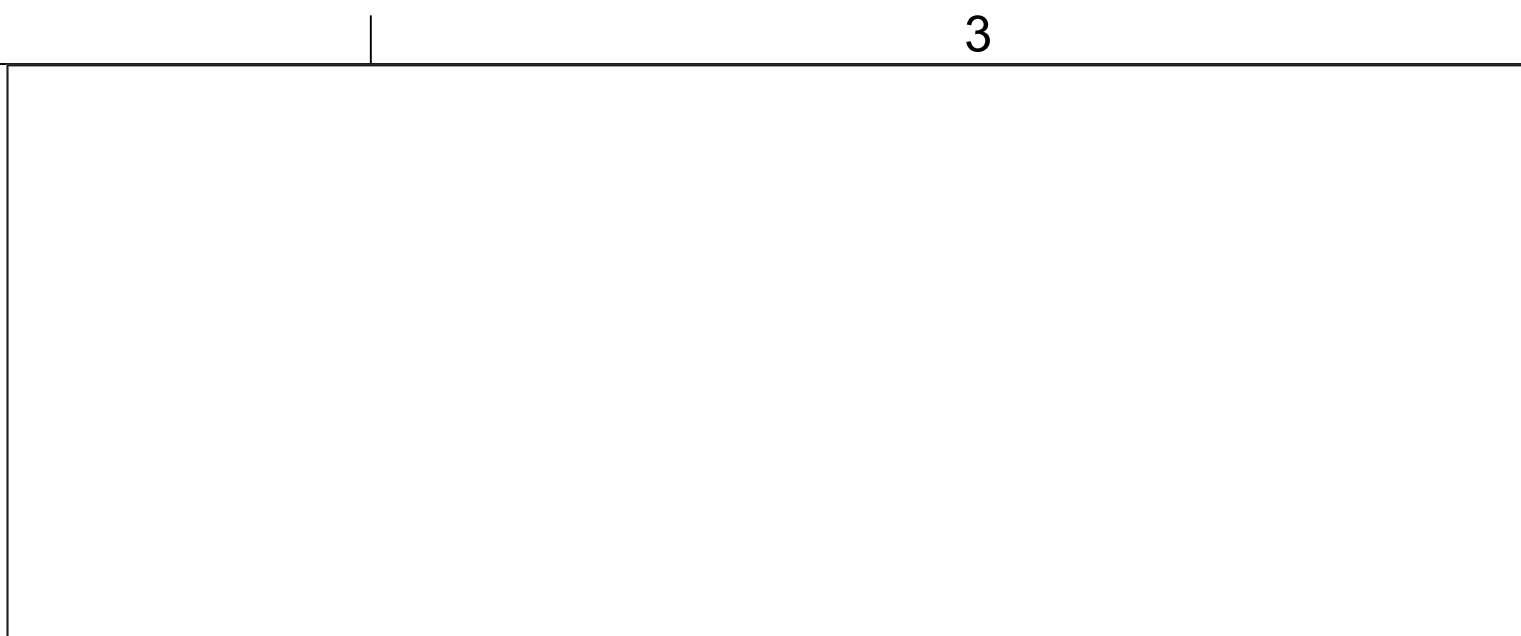
NTS



LEE'S SUMMIT MISSOURI
PUBLIC WORKS ENGINEERING DIVISION | 220 SE GREEN STREET | LEE'S SUMMIT, MO 64063
STANDARD SHALLOW SANITARY PRECAST MANHOLE
SAN-3

4 STANDARD SHALLOW SANITARY PRECAST MANHOLE

NTS



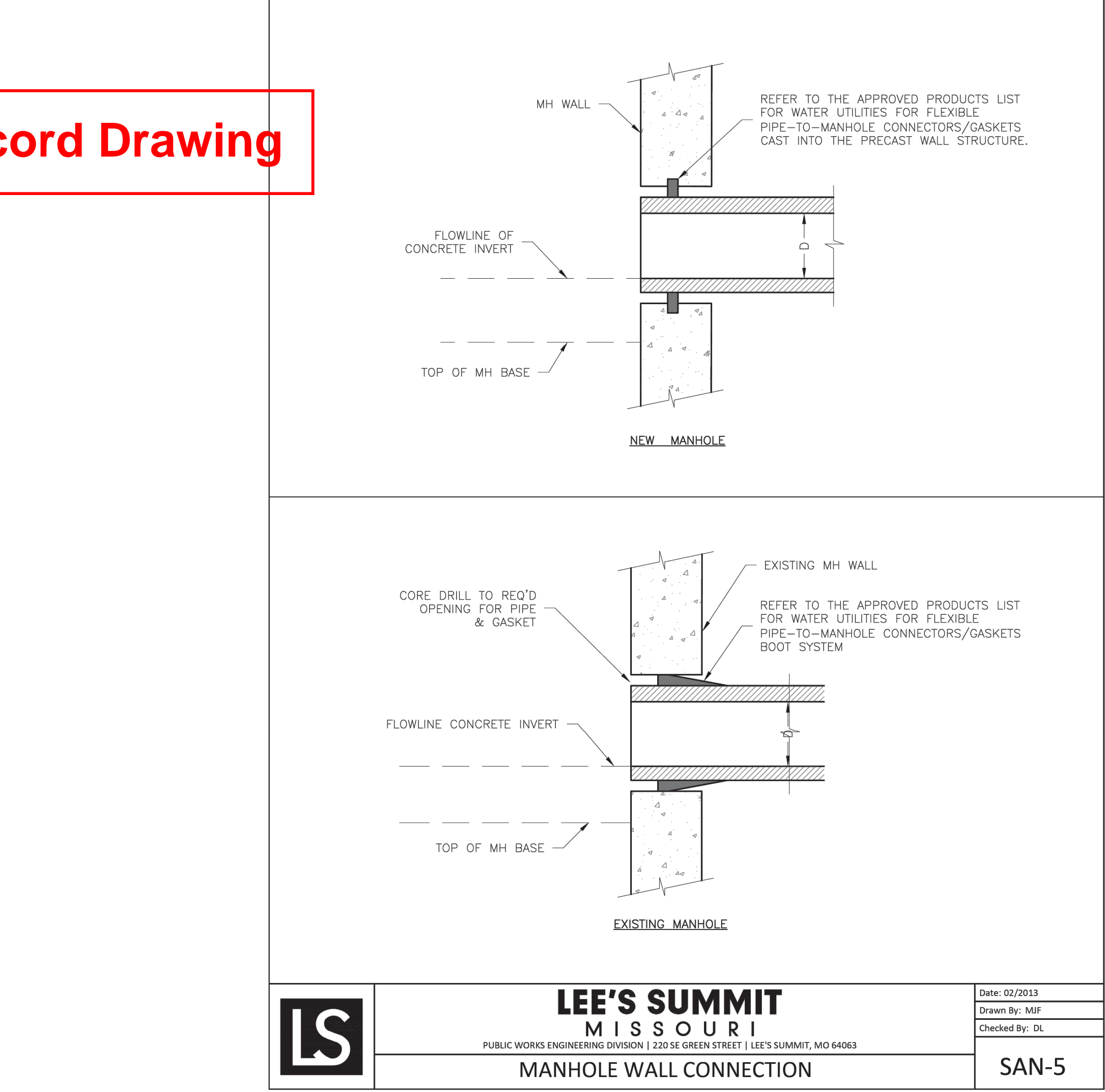
NOTES:

1. FOR PIPES LESS THAN 15", T = 6" MIN.
2. FOR PIPES 15" THRU 36", T = 8" MIN.
3. INTERMEDIATE BELLS SHALL BE ENCASED.
4. REINFORCING STEEL SHALL BE #4 @ 12" O.C. EACH WAY WITH A MINIMUM REBAR LAP OF 12".

LEE'S SUMMIT MISSOURI
PUBLIC WORKS ENGINEERING DIVISION | 220 SE GREEN STREET | LEE'S SUMMIT, MO 64063
PIPE ENCASEMENT DETAIL
SAN-7

2 PIPE ENCASEMENT

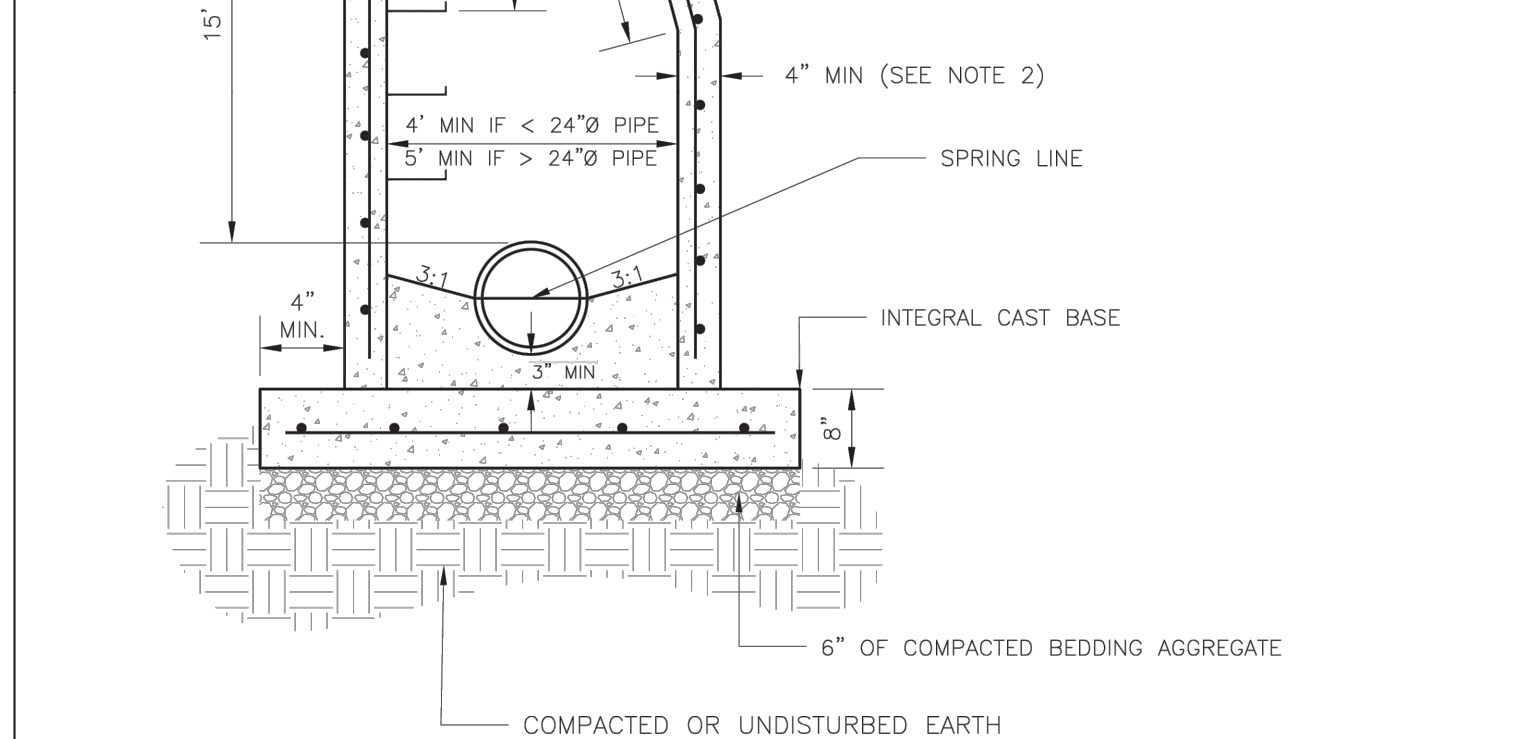
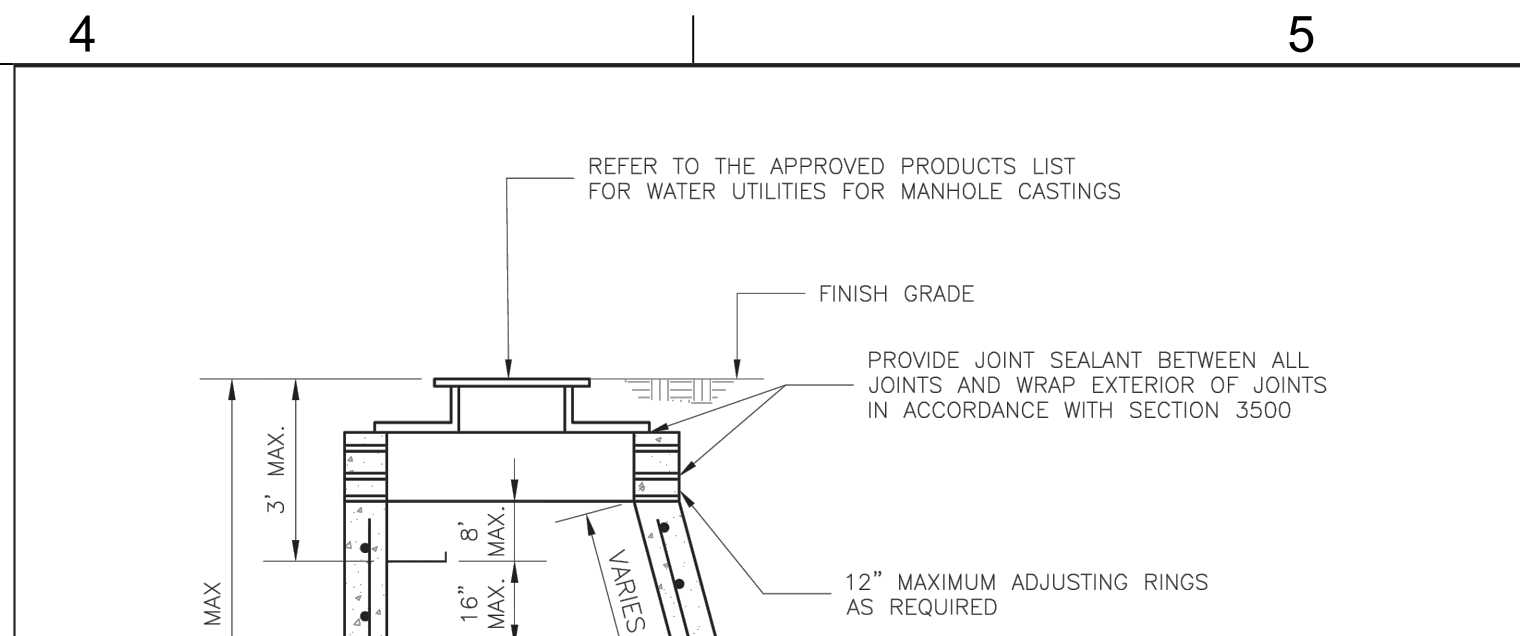
NTS



LEE'S SUMMIT MISSOURI
PUBLIC WORKS ENGINEERING DIVISION | 220 SE GREEN STREET | LEE'S SUMMIT, MO 64063
MANHOLE WALL CONNECTION
SAN-5

5 MANHOLE WALL CONNECTION

NTS



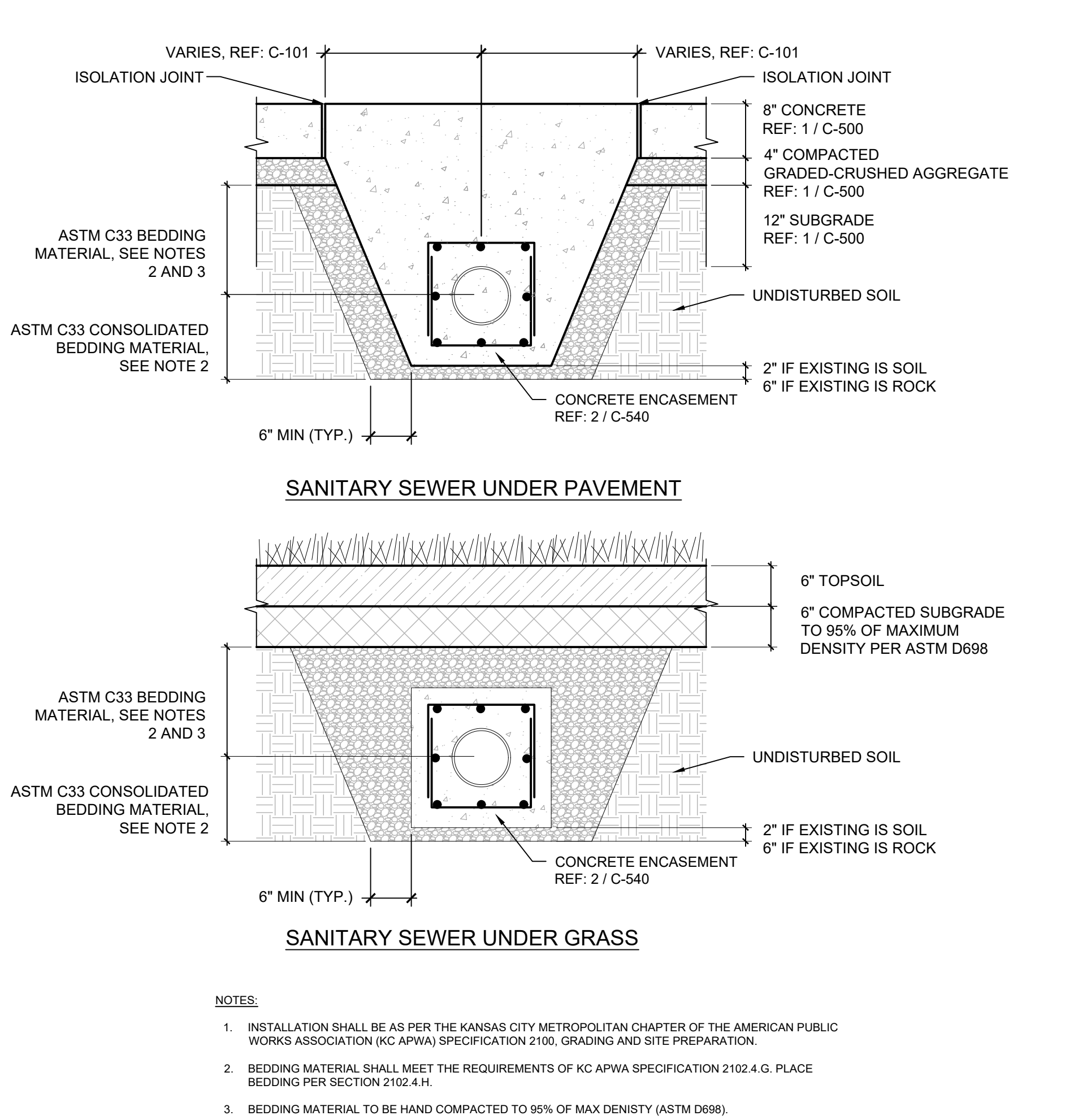
NOTES:

1. PRECAST CONCRETE MANHOLES SHALL CONFORM TO ASTM C478 EXCEPT AS MODIFIED BY THE SPECIFICATIONS.
2. A WALL THICKNESS NOT LESS THAN ONE-TWELFTH (1/12) OF THE INSIDE DIAMETER OR 4", WHICHEVER IS GREATER, SHALL BE USED WHEN THE MANHOLE DEPTH IS LESS THAN 15'.
3. WATERPROOFING SHALL BE REQUIRED ON THE OUTSIDE OF MANHOLES. THE WATERPROOFING SHALL CONSIST OF A TOTAL DRY FILM THICKNESS OF NOT LESS THAN 14 MILS OF BITUMINOUS COATING.
4. ONLY ECCENTRIC MANHOLE CONES WILL BE ALLOWED UNLESS OTHERWISE APPROVED BY THE CITY ENGINEER.
5. THE FILL CONCRETE FLOW CHANNEL FOR SIDE BRANCHES SHALL BE PLACED TO PROVIDE A SMOOTH TRANSITION INTO THE FLOW LINE.
6. REFER TO THE APPROVED PRODUCTS LIST FOR WATER UTILITIES FOR APPROVED MANHOLE GASKET MODELS.
7. REFER TO THE APPROVED PRODUCTS LIST FOR APPROVED STEPS.

LEE'S SUMMIT MISSOURI
PUBLIC WORKS ENGINEERING DIVISION | 220 SE GREEN STREET | LEE'S SUMMIT, MO 64063
STANDARD SANITARY PRECAST MANHOLE
SAN-2

3 STANDARD SANITARY PRECAST MANHOLE

NTS



LEE'S SUMMIT MISSOURI
PUBLIC WORKS ENGINEERING DIVISION | 220 SE GREEN STREET | LEE'S SUMMIT, MO 64063
TRENCHING & BACKFILL DETAIL
SAN-6

6 TRENCHING & BACKFILL DETAIL

NTS

GLMVArchitecture
9229 WARD PARKWAY
SUITE # 210
KANSAS CITY, MO 64114
TEL: (816) 444-4200
FAX: (316) 265-5646
www.glmv.com
GLMV ARCHITECTURE, INC.
MISSOURI STATE CERTIFICATE OF AUTHORITY
#00036

CIVIL ENGINEER & LANDSCAPE ARCH.
GLMV ARCHITECTURE, INC.
MISSOURI CIVIL COA #2018033898
MISSOURI LANDSCAPE COA #000008
9229 WARD PARKWAY, SUITE # 210
KANSAS CITY, MO 64114
TEL: (816) 444-4200

STRUCTURAL ENGINEER
LEIGH + OYANE
MISSOURI COA #001644
250 NE MURBERRY, SUITE 201
LEE'S SUMMIT, MO, 64086
(816) 444-3144 PHONE

MECH. ELEC. & PLUMBING ENGINEERS
HOSS & BROWN ENGINEERS
MISSOURI COA #01022
15902 MIDLAND DRIVE
SHAWNEE, KS 66217
(913) 362-9090 PHONE

SECURITY & IT ENGINEERS
HENDERSON ENGINEERS
MISSOURI COA # 000556
1801 MAIN STREET, SUITE 300
KANSAS CITY, MO 64108
(816) 663-8700 PHONE

RECORD DRAWINGS
FIRE STATION #4
CITY OF LEE'S SUMMIT
5031 NORTHEAST LAKEWOOD WAY
LEE'S SUMMIT, MISSOURI 64064

REVISIONS:

#	Description	Date
3	ASI 03	12.08.2022
11	ASI 11	08.08.2023

DERICK M. HOLMES
PE-2022005196
11/20/2024
DERICK HOLMES - CIVIL ENGINEER
MO# PE-2022005196
The Professional Engineers and drafters in this sheet apply only to the material and items shown on this sheet. All drawings, specifications or other documents not exhibiting this seal shall not be considered prepared by the engineer, and the engineer assumes no responsibility for the accuracy of such plans, drawings, or documents not exhibiting this seal.

PROJECT NO: 18225R21001
DATE: 10.19.2022
DRAWN BY: DMH
CHKD BY: SJB

SANITARY SEWER DETAILS

C-540

PLEASE CONSIDER THE ENVIRONMENT BEFORE PRINTING THIS