

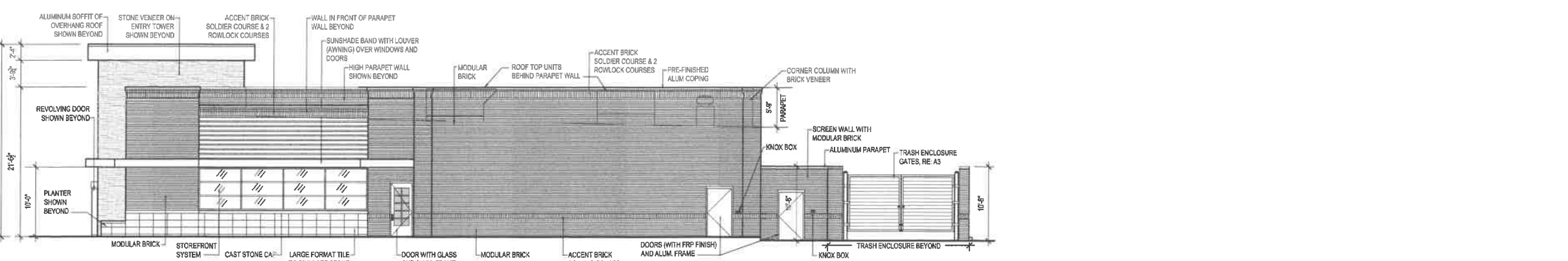
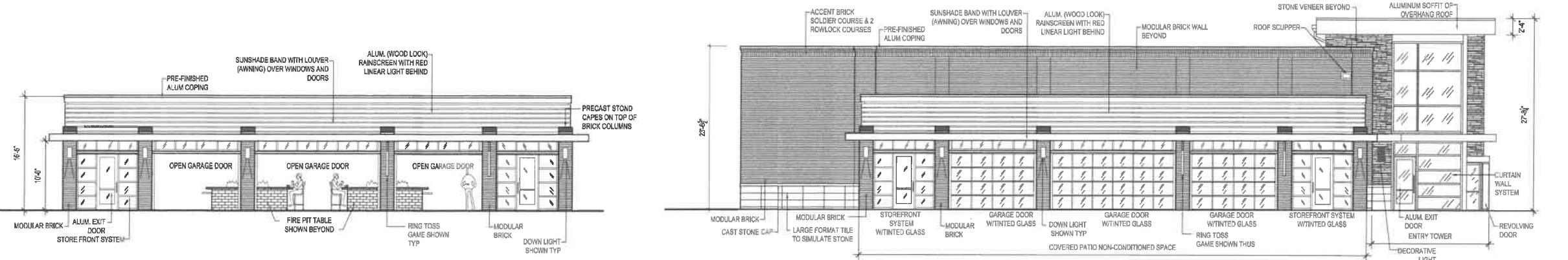
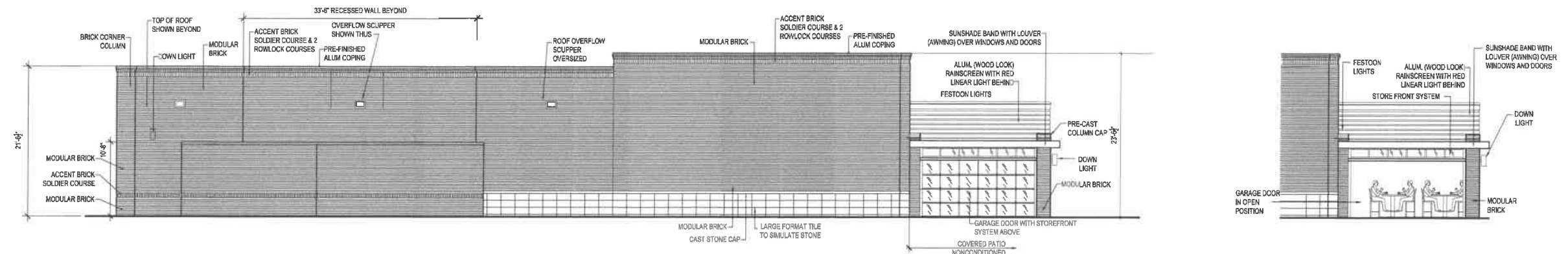
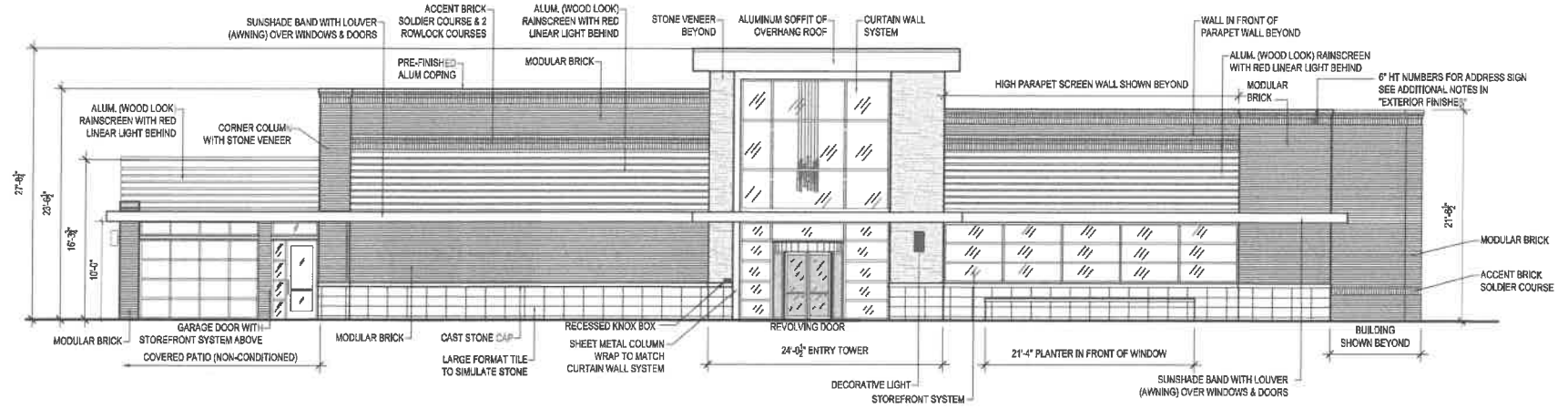


EXTERIOR FINISHES

STONE VENEER	CORONADO STONE PRODUCTS	PRO-LEDGE HURON, AMERIMIX 50 / 50
LARGE FORMAT TILE TO SIMULATE STONE	VIRGINIAN TILE, AMERICAN OLEAN, MERT - 12" X 24"	COLOR: COOL BEIGE - MORTAR: AMERIMIX 50 / 50
CAST STONE CAP	TEXAS BUILDING PRODUCTS	COLOR: TAUPE - MORTAR: AMERIMIX 50 / 50
BRICK - MODULAR STANDARD FACE BRICK	YANKEE HILL BRICK	MEDIUM IRON SPOT, SMOOTH, MORTAR: AMERIMIX 50 / 50
ACCENT BRICK - MODULAR STANDARD FACE BRICK	CLOUD CERAMICS	EBONY IRON SPOT, SMOOTH, MORTAR: AMERIMIX, DARK BLACK
ENTRY TOWER METAL SOFFIT AT ROOF	PRE-FINISHED ALUMINUM	KYNAR DARK ANODIZED BRONZE
SUNSHADE BAND WITH LOUVERS OVER DOORS & WINDOWS	PRE-FABRICATED	KYNAR FINISH - DARK ANODIZED BRONZE
STUCCO WITH METAL RAIN SCREEN	KNOTWOOD ALUM PANEL - WOOD LOOK 6" PANEL WIDTH, 2" MAX GAP BETWEEN PANELS W/LED LIGHT (RED) BEHIND ON SMOOTH STUCCO	RAINSCREEN COLOR: BLACKBUTT, STUCCO COLOR: TO MATCH SW8071, POPLAR GREY

SEE SHEET A1 FOR COLOR PHOTO OF FINISHES

ADDRESS SIGN - LOCATED HIGH ON FRONT OF BUILDING OVER BRICK SOLDIER COURSE FACADE, ADDRESS NUMBER: "1320", SIZE 6" X 1/2" THICKNESS, FONT: HELVETICA BOLD, MOUNTING: PLAIN, COLOR: BRUSHED NATURAL SATIN (TO CONTRAST WITH BUILDING FINISH)

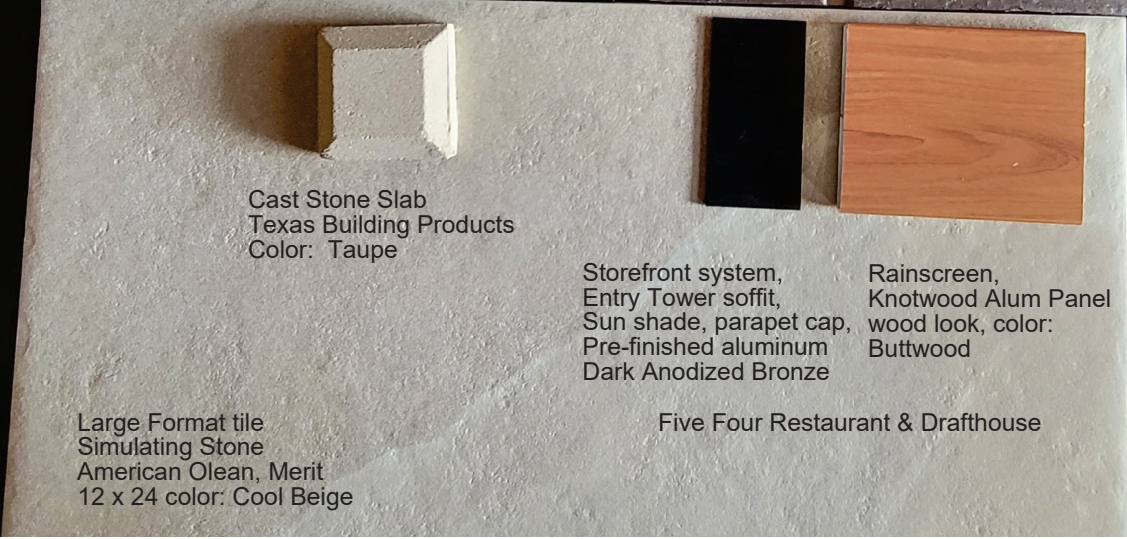




Cultured Stone
Coroando Stone
pro lLedge Huron



Modular standard face brick
Cloud Cermaics
Ebony Iron/Spot, Smooth
Mortar: Americamix, Dark Black



Cast Stone Slab
Texas Building Products
Color: Taupe

Large Format tile
Simulating Stone
American Olean, Merit
12 x 24 color: Cool Beige

Storefront system,
Entry Tower soffit,
Sun shade, parapet cap,
Pre-finished aluminum
Dark Anodized Bronze

Rainscreen,
Knotwood Alum Panel
wood look, color:
Buttwood

Five Four Restaurant & Drafthouse