



Eric Byrd - Engineer
Missouri: #PE-2018013633

ACI BOLAND ARCHITECTS

1710 Wyandotte
Kansas City, MO 64108
T: 816.763.9600

ACI/Boland, Inc.
Kansas City | St. Louis
Licensee's Certificate of Authority Number:
Missouri: #000958

CIVIL CONSULTANT

BHC
7101 College Blvd., Suite 400
Overland Park, KS 66210
(913) 663-1900

STRUCTURAL CONSULTANT

Bob D. Campbell & Co.
4338 Bellevue
Kansas City, MO 64111
(816) 531-4144

MEP CONSULTANT

Branch Pattern
1508 Grand Boulevard
Kansas City, MO 64108
(816) 531-2121

Surgery Center of Lee's Summit
1950 SE Shenandoah Drive
Lee's Summit, MO 64063

Date 01/13/23
Job Number 3-22030
Drawn By TS
Checked By EB

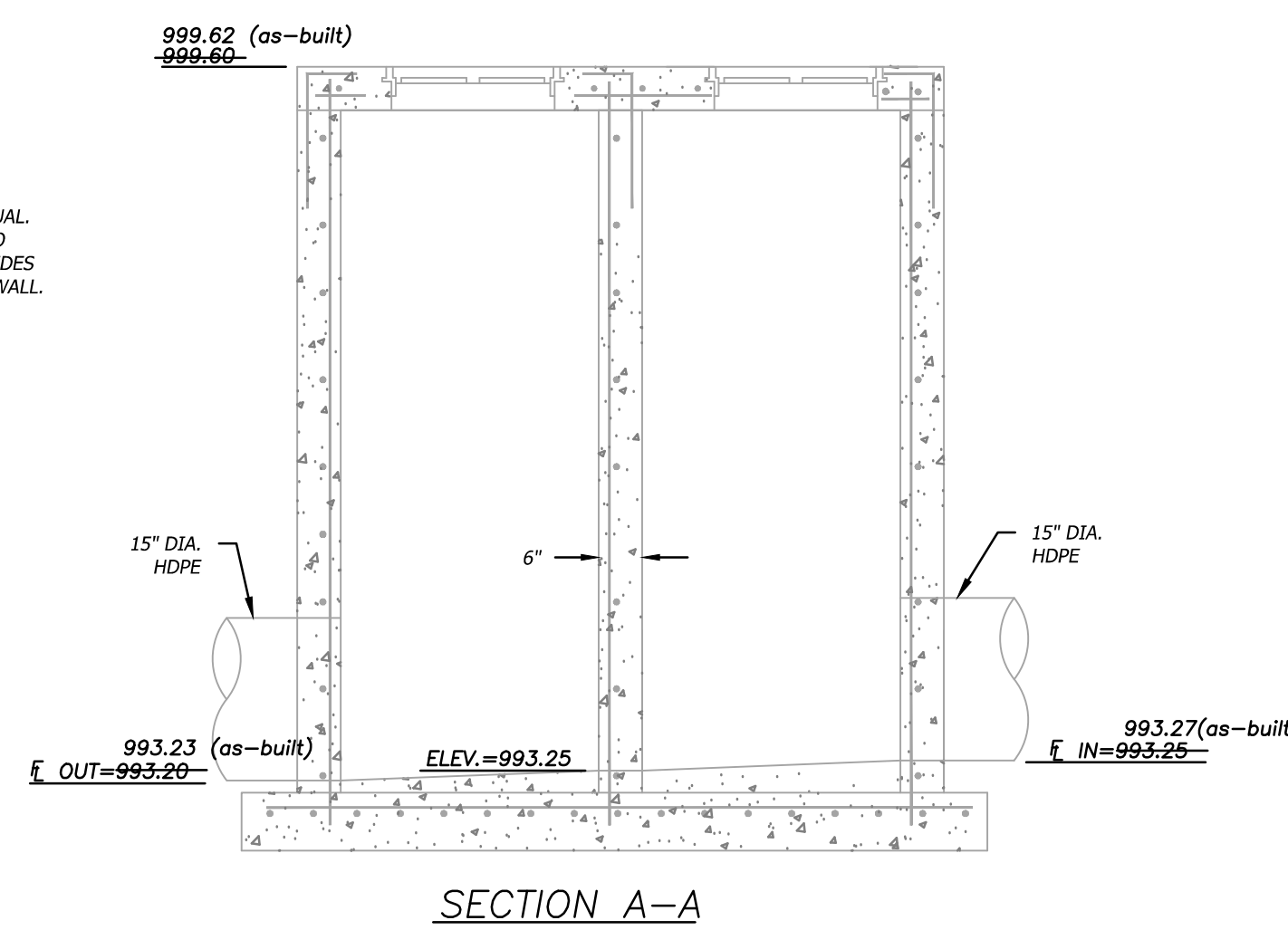
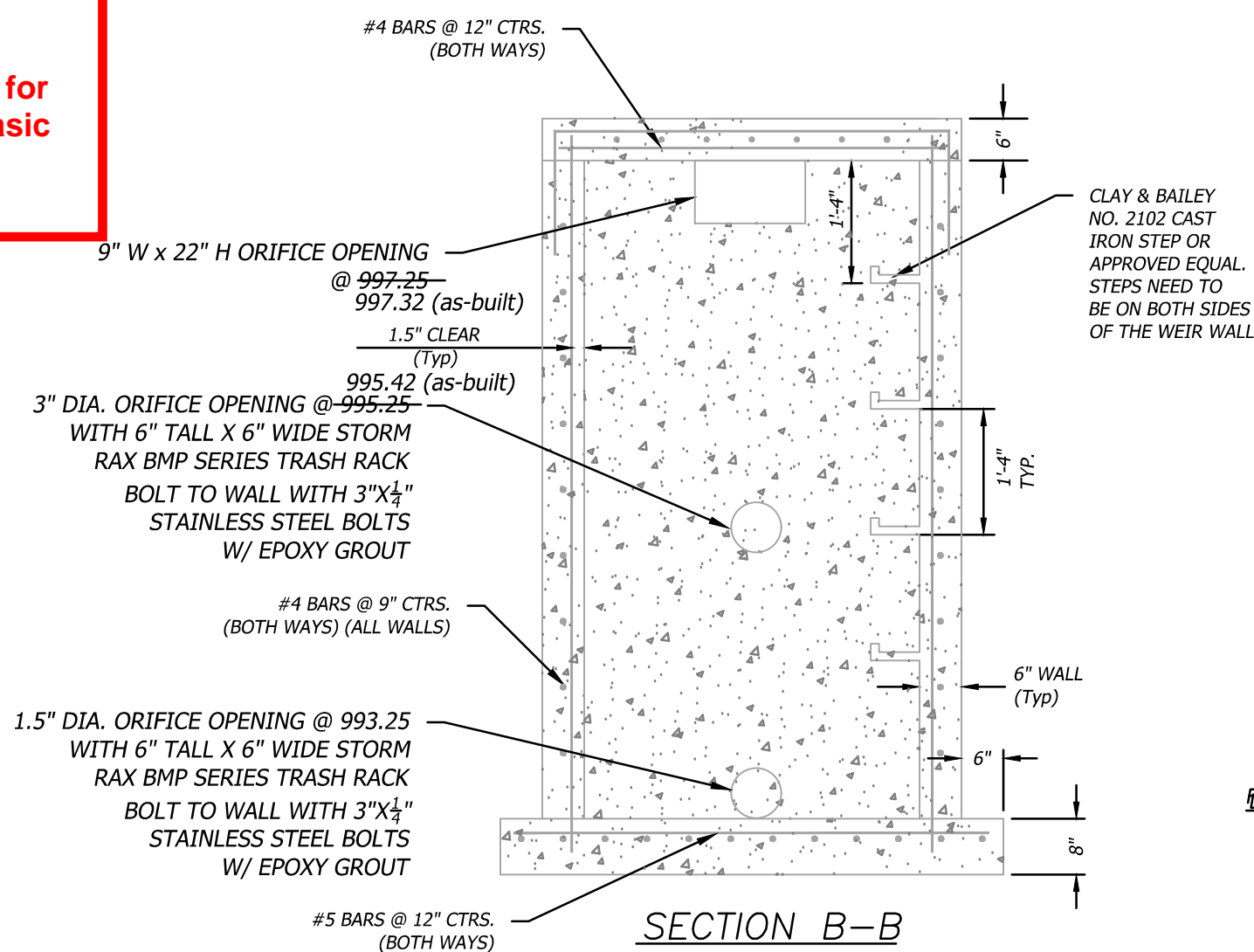
Number	Date	Description
1	2/14/23	Addendum 1
2	3/2/23	Addendum 3
3	10/17/24	Detention As-Built

C6.3

© 2022 ACI/BOLAND, Inc.
NORTH DETENTION BASIN PLAN

Accepted Record Drawings

These plans have been reviewed for
accuracy and are accepted for basic
conformance to the approved
construction drawings.



GENERAL NOTES

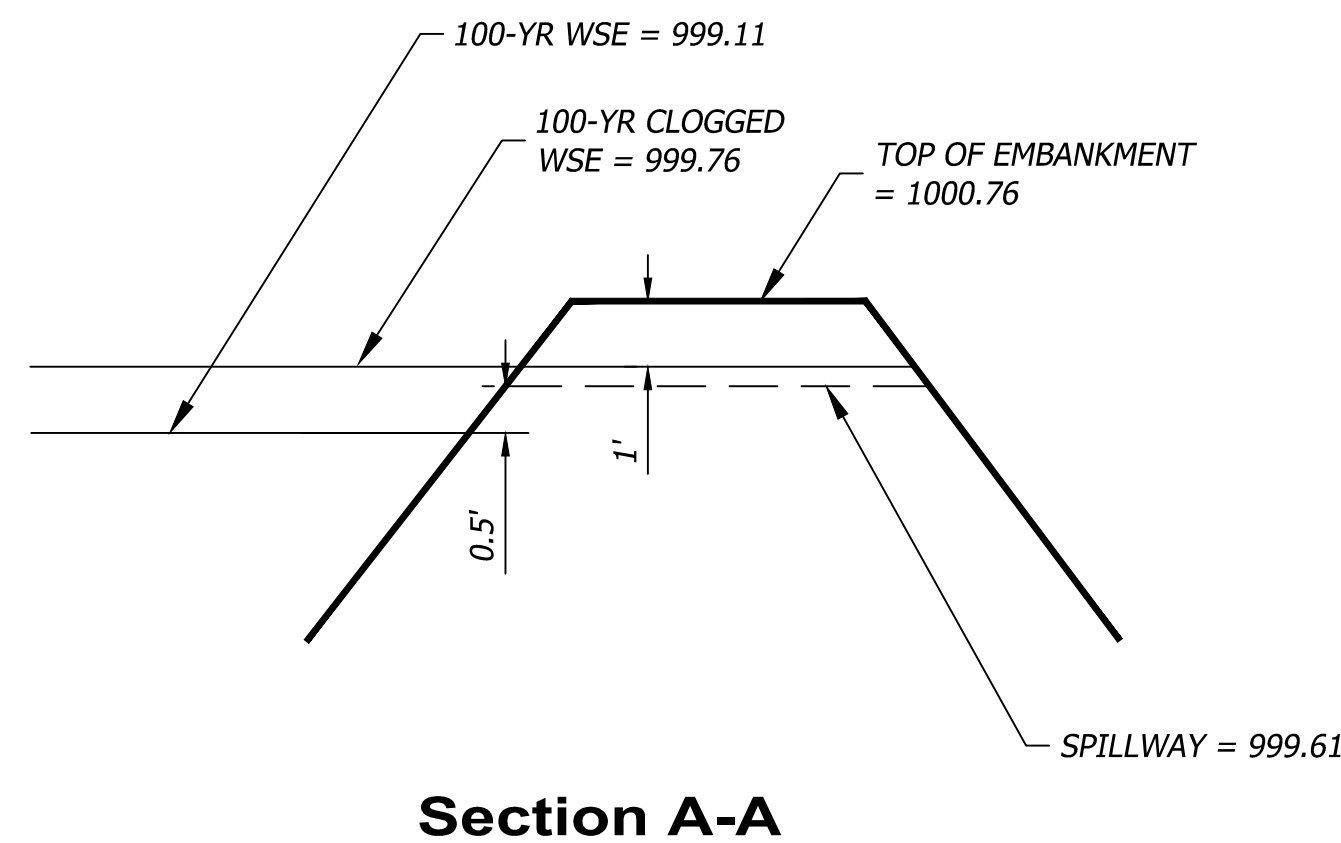
- ALL STORM SEWER STRUCTURES SHALL BE PRECAST.
- PRECAST SHOP DRAWINGS ARE TO BE APPROVED BY THE ENGINEER.
- DO NOT SCALE THESE DRAWINGS FOR DIMENSIONS OR CLEARANCES. ANY QUESTIONS REGARDING DIMENSIONS SHALL BE BROUGHT TO THE ATTENTION OF THE ENGINEER PRIOR TO CONSTRUCTION.
- RING & COVER TO BE EAST JORDAN IRON WORKS #00150230 (HEAVY DUTY) OR APPROVED EQUAL.
- PIPE CONNECTIONS TO PRECAST STRUCTURES SHALL HAVE A MINIMUM OF 6" OF CONCRETE AROUND THE ENTIRE PIPE WITHIN 2' OF THE STRUCTURE.
- MATERIAL SELECTION AND COMPACTION REQUIREMENTS FOR BACKFILL AROUND STRUCTURES SHALL BE AS SPECIFIED IN THE CITY TECHNICAL SPECIFICATIONS.

MATERIAL NOTES

CONCRETE

- CONCRETE USED IN THIS WORK SHALL BE KCMBAK FOR ALL PRECAST STRUCTURAL COMPONENTS, AS APPROVED BY THE KANSAS CITY METROPOLITAN MATERIALS BOARD, AND SHALL MEET THE REQUIREMENTS OF THE CITY TECHNICAL SPECIFICATIONS.
- CONCRETE CONSTRUCTION SHALL MEET THE APPLICABLE REQUIREMENTS OF STANDARD SPECIFICATIONS FOR STATE ROAD AND BRIDGE CONSTRUCTION, KANSAS DEPARTMENT OF TRANSPORTATION, LATEST EDITION.
- INLET FLOORS SHALL BE SHAPED WITH NON-REINFORCED KCMBAK CONCRETE INVERT TO PROVIDE SMOOTH FLOW.
- BEVEL ALL EXPOSED EDGES WITH 3/4" TRIANGULAR MOLDING.
- REINFORCING STEEL SHALL BE NEW BILLET, MINIMUM GRADE 40 AS PER ASTM A615, AND SHALL BE BENT COLD.
- ALL DIMENSIONS RELATIVE TO REINFORCING STEEL ARE TO CENTERLINE OF BARS. 2" CLEARANCE SHALL BE PROVIDED THROUGHOUT UNLESS NOTED OTHERWISE. TOLERANCE OF +/- 1/8" SHALL BE PERMITTED.
- ALL LAP SPLICES NOT SHOWN SHALL BE A MINIMUM OF 40 BAR DIAMETERS IN LENGTH.
- ALL REINFORCING STEEL SHALL BE SUPPORTED ON FABRICATED STEEL BAR SUPPORTS @ 3'-0" MAXIMUM SPACING.
- ALL DOWELS SHALL BE ACCURATELY PLACED AND SECURELY TIED IN PLACE PRIOR TO PLACEMENT OF BOTTOM SLAB CONCRETE. STICKING OF DOWELS INTO FRESH OR PARTIALLY HARDENED CONCRETE WILL NOT BE ACCEPTABLE.

REINFORCING STEEL

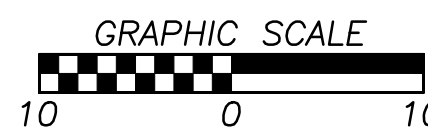
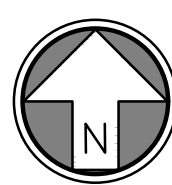


Section A-A

As-Built Contours

**RECORD
DRAWING**

DATE: 10/17/2024



PROPOSED
BUILDING
FFE = 1003.50

100-yr Storage Volume = 0.54 (as-built)
ac-ft

FL = 993.17 (as-built)

100-YR WSE = 999.11

995

994

993

992

991

990

989

988

987

986

985

984

983

982

981

980

979

978

977

976

975

974

973

972

971

970

969

968

967

966

965

964

963

962

961

960

959

958

957

956

955

954

953

952

951

950

949

948

947

946

945

944

943

942

941

940

939

938

937

936

935

934

933

932

931

930

929

928

927

926

925

924

923

922

921

920

919

918

917

916

915

914

913

912

911

910

909

908

907

906

905

904

903

902

901

900

899

898

897

896

895

894

893

892

891

890

889

888

887

886

885

884

883

882

881

880

879

878

877

876

875

874

873

872

871

870

869

868

867

866

865

864

863

862

861

860

859

858

857

856

855

854

853

852

851

850

849

848

847

846

845

844

843

842

841

840

839

838

837

836

835

834

833

832

831

830

829

828

827

826

825

824

823

822

821

820

819

818

817

816

815

814

813

812

811

810

809

808

807

806

805

804

803

802

801

800

799

798

797

796

795

794

793

792

791

790

789

788

787

786

785

784

783

782

781

780

779

778

777

776

775

774

773

772

771

770

769

768

767

766

765

764

763

762

761

760

759

758

757

756

755

754

753

752

751

750

749

748

747

746

745

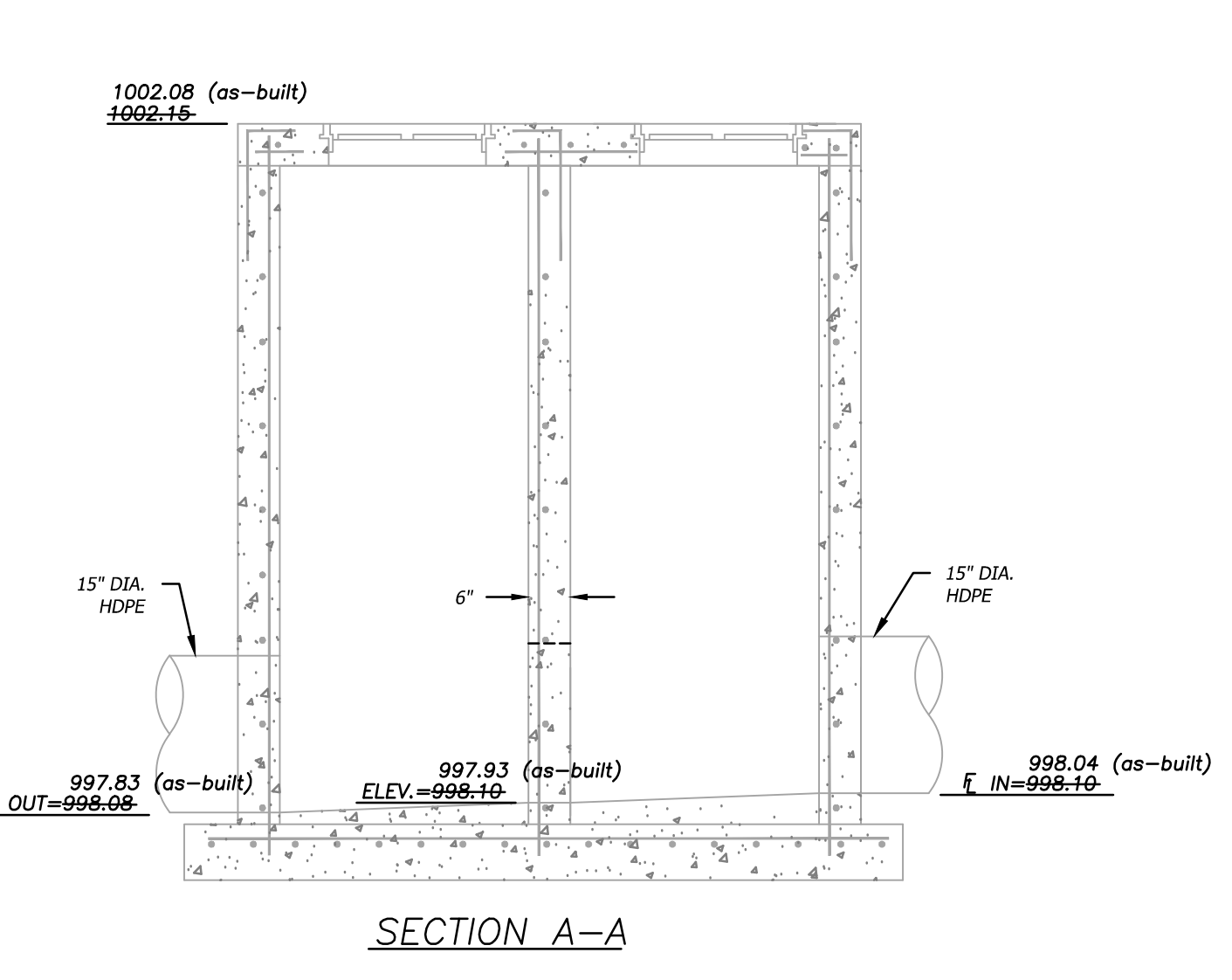
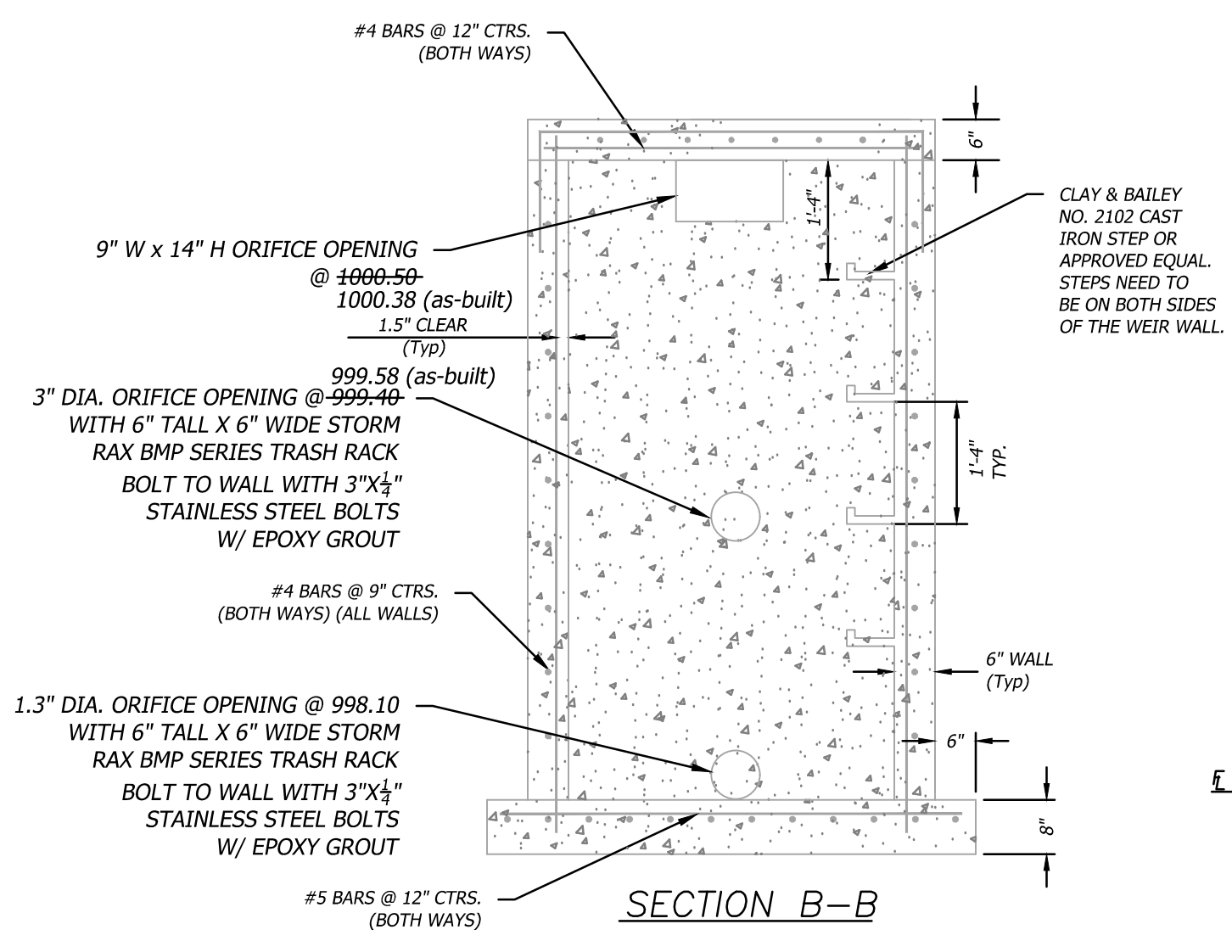
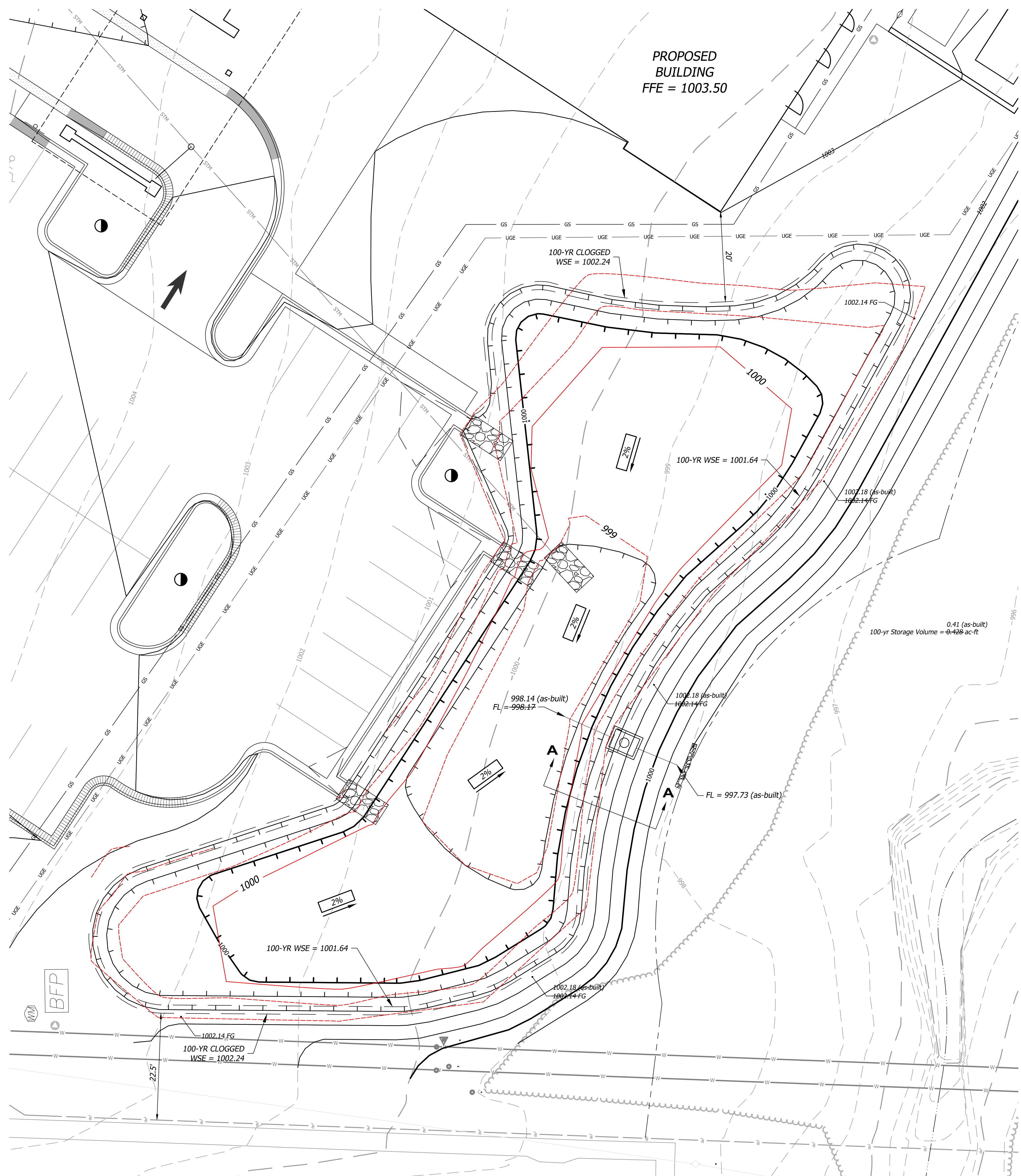
744

<

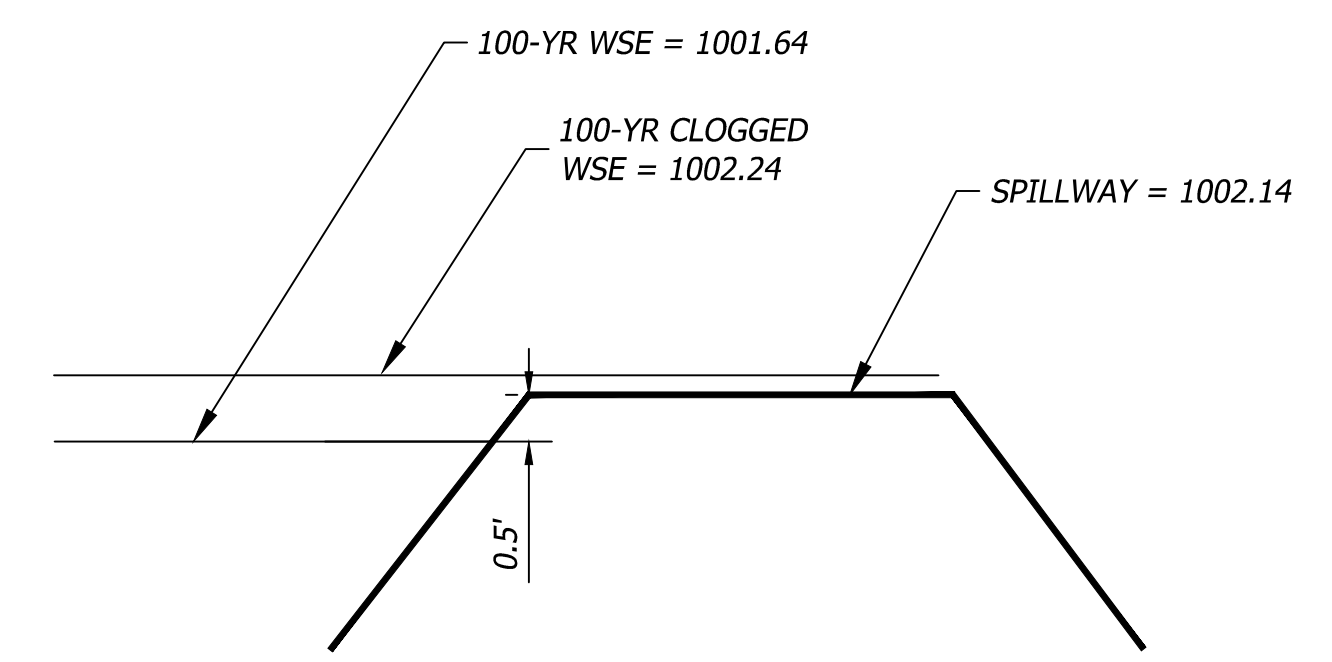
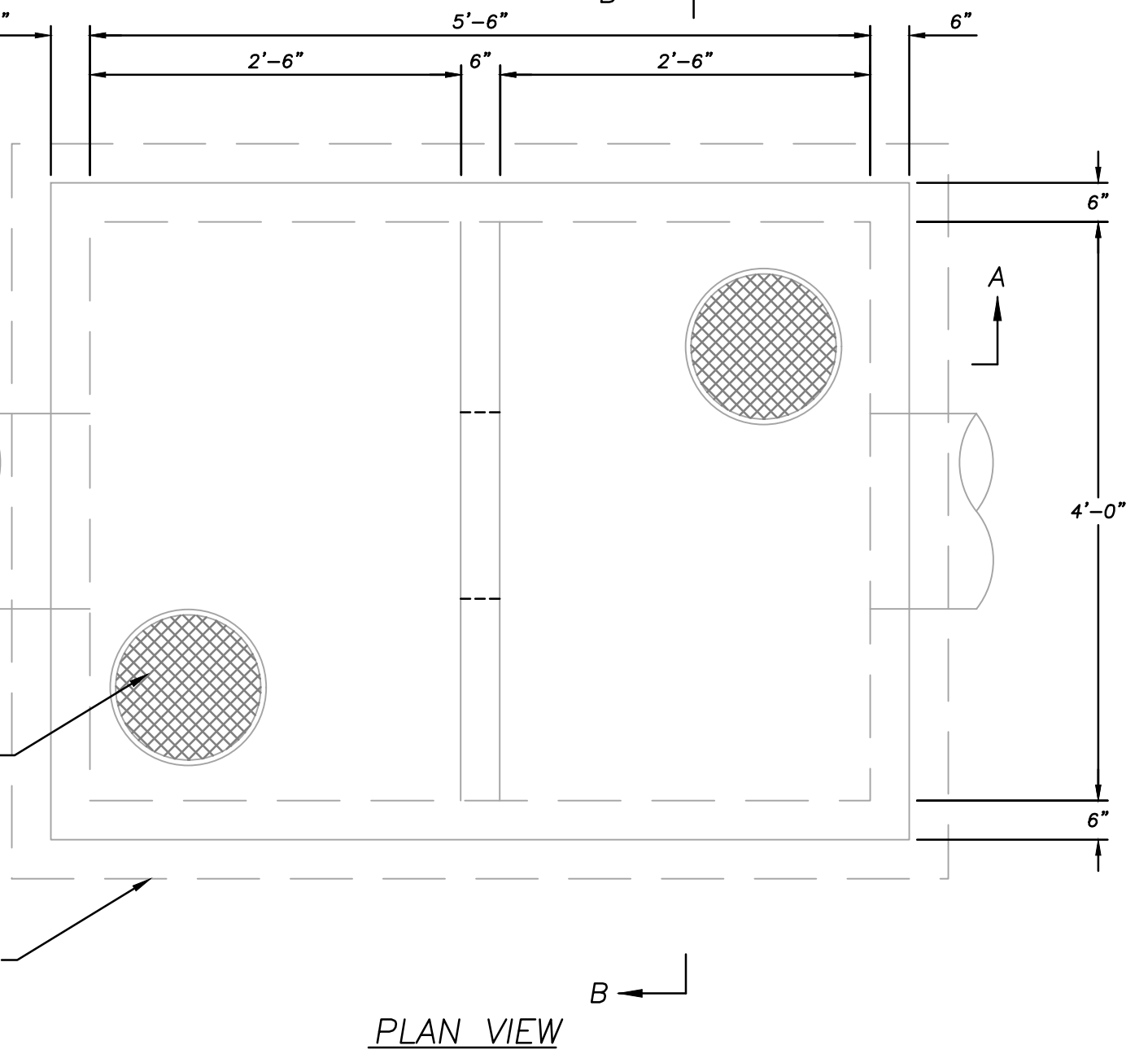
Oct 17, 2024 - 2:24pm Printed By: Eric Byrd V:\034680-HCA_LSMC_A02\A02\Eng\Sheet\034680-SHTF-DETN.dwg Layout: South Basin

E
D
C
B
A

6 5 4 3 2 1



- GENERAL NOTES**
- ALL STORM SEWER STRUCTURES SHALL BE PRECAST.
 - PRECAST SHOP DRAWINGS ARE TO BE APPROVED BY THE ENGINEER.
 - DO NOT SCALE THESE DRAWINGS FOR DIMENSIONS OR CLEARANCES. ANY QUESTIONS REGARDING DIMENSIONS SHALL BE BROUGHT TO THE ATTENTION OF THE ENGINEER PRIOR TO CONSTRUCTION.
 - RING & COVER TO BE EAST JORDAN IRON WORKS #00150230 (HEAVY DUTY) OR APPROVED EQUAL.
 - PIPE CONNECTIONS TO PRECAST STRUCTURES SHALL HAVE A MINIMUM OF 6\"/>
 - MATERIAL SELECTION AND COMPACTION REQUIREMENTS FOR BACKFILL AROUND STRUCTURES SHALL BE AS SPECIFIED IN THE CITY TECHNICAL SPECIFICATIONS.
- MATERIAL NOTES**
- CONCRETE**
- CONCRETE USED IN THIS WORK SHALL BE KCMHB4K FOR ALL PRECAST STRUCTURAL COMPONENTS, AS APPROVED BY THE KANSAS CITY METROPOLITAN MATERIALS BOARD, AND SHALL MEET THE REQUIREMENTS OF THE CITY TECHNICAL SPECIFICATIONS.
 - CONCRETE CONSTRUCTION SHALL MEET THE APPLICABLE REQUIREMENTS OF STANDARD SPECIFICATIONS FOR STATE ROAD AND BRIDGE CONSTRUCTION, KANSAS DEPARTMENT OF TRANSPORTATION, LATEST EDITION.
 - INLET FLOORS SHALL BE SHAPED WITH NON-REINFORCED KCMHB4K CONCRETE INVERT TO PROVIDE SMOOTH FLOW.
 - BEVEL ALL EXPOSED EDGES WITH $\frac{3}{4}$ \"/>
- REINFORCING STEEL**
- REINFORCING STEEL SHALL BE NEW BILLET, MINIMUM GRADE 40 AS PER ASTM A615, AND SHALL BE BENT COLD.
 - ALL DIMENSIONS RELATIVE TO REINFORCING STEEL ARE TO CENTERLINE OF BARS. 2\"/>
 - ALL LAP SPLICES NOT SHOWN SHALL BE A MINIMUM OF 40 BAR DIAMETERS IN LENGTH.
 - ALL REINFORCING STEEL SHALL BE SUPPORTED ON FABRICATED STEEL BAR SUPPORTS @ 3'-0\"/>
 - ALL DOWELS SHALL BE ACCURATELY PLACED AND SECURELY TIED IN PLACE PRIOR TO PLACEMENT OF BOTTOM SLAB CONCRETE. STICKING OF DOWELS INTO FRESH OR PARTIALLY HARDENED CONCRETE WILL NOT BE ACCEPTABLE.



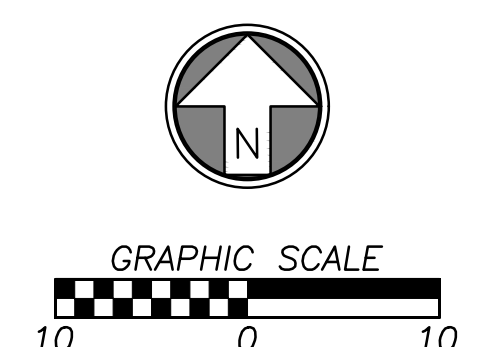
GENERAL NOTE:

The detention basin and outlet structure shall be constructed at the same time as erosion and sediment control devices and measures, prior to any other activity on the project.

An as-graded and as-built survey shall be submitted and accepted by the City prior to an occupancy permit being granted.

**RECORD
DRAWING**

DATE: 10/17/2024



**Accepted
Record Drawings**

These plans have been reviewed for accuracy and are accepted for basic conformance to the approved construction drawings.

Eric Byrd - Engineer
Missouri: #PE-2018013633

**ACI
BOLAND
ARCHITECTS**

1710 Wyandotte
Kansas City, MO 64108
T: 816.763.9600

ACI/Boland, Inc.
Kansas City | St. Louis
Licensee's Certificate of Authority Number:
Missouri: #000958

CIVIL CONSULTANT

BHC
7101 College Blvd., Suite 400
Overland Park, KS 66210
(913) 663-1900

STRUCTURAL CONSULTANT

Bob D. Campbell & Co.
4338 Belleview
Kansas City, MO 64111
(816) 531-4144

MEP CONSULTANT

Branch Pattern
1508 Grand Boulevard
Kansas City, MO 64108
(816) 531-2121

Surgery Center of Lee's Summit
1950 SE Shenandoah Drive
Lee's Summit, MO 64063

Date	01/13/23
Job Number	3-22030
Drawn By	TS
Checked By	EB

Number	Date	Description
1	2/14/23	Addendum 1
2	3/2/23	Addendum 3
3	10/17/24	Detention As-Built

C6.4

© 2022 ACI/BOLAND, Inc.
SOUTH DETENTION BASIN PLAN