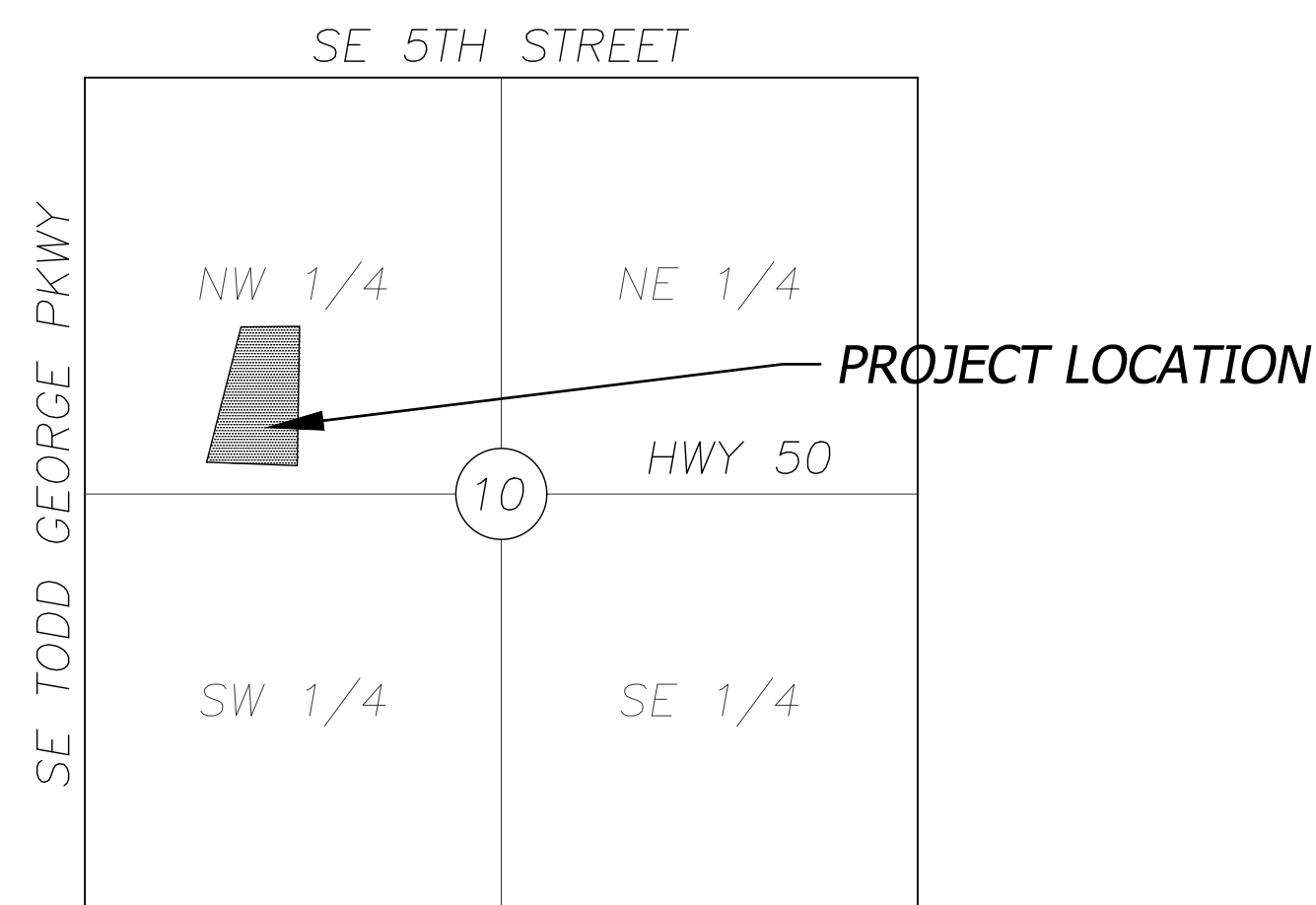


**RECORD
DRAWING**

DATE: 09/11/2024



SCALE: 1" = 2000'
SECTION 10-T47N-R31W
JACKSON COUNTY, MISSOURI

PLANNING AND DEVELOPMENT
CITY HALL
JOSH JOHNSON
220 SE GREEN STREET
LEE'S SUMMIT, MO 64063
TEL: (816) 969-1600
FAX: (816) 969-1619

PUBLIC WORKS
CITY HALL
220 SE GREEN STREET
LEE'S SUMMIT, MO 64063
TEL: (816) 969-1800
FAX: (816) 969-1809

LEE'S SUMMIT FIRE DEPARTMENT
207 SE DOUGLAS ROAD
LEE'S SUMMIT, MO 64063
TEL: (816) 969-1300

TELEPHONE COMPANY
AT&T
TEL: (800) 464-7928

CODES ADMINISTRATION
CITY HALL
220 SE GREEN STREET
LEE'S SUMMIT, MO 64063
TEL: (816) 969-1200
FAX: (816) 969-1201

WATER UTILITIES
CITY HALL
1200 SE HAMBLEN RD
LEE'S SUMMIT, MO 64063
TEL: (816) 969-1900
FAX: (816) 969-1935

ELECTRIC COMPANY
EVERGY
TEL: (888) 471-5275

GAS COMPANY
MISSOURI GAS ENERGY
TEL: (816) 756-5252



VICINITY MAP
Not to Scale

Sheet List Table	
Sheet Number	Sheet Title
1	COVER SHEET
2	GENERAL LAYOUT
3	SANITARY PLAN AND PROFILE
4	EROSION CONTROL PLAN
5	CONSTRUCTION DETAILS

Record Drawing

All existing utility locations shown are approximate only and are not guaranteed to be accurate or all inclusive. Contractor shall be responsible for contacting all utility companies and verifying the actual field locations of all utilities prior to any construction activity. Contractor shall keep all utility locations current. Utilities damaged through the negligence of the contractor to obtain the proper field locations shall be the responsibility of the contractor to repair or replace at their expense and at the direction of the utility company. The contractor shall pothole and survey all utility crossings prior to construction of any portion of storm sewer, sanitary sewer laterals, underdrains, conduit and any other subsurface element of the project. The survey information shall be forwarded to the project engineer for review. The contractor shall not begin construction on any subsurface element on the project without the approval of the project engineer. Utility coordination, potholing/surveying shall be subsidiary to other bid items.

PROJECT CONTROL TABLE
(NAD83 MISSOURI STATE PLANE, WEST ZONE, US SURVEY FOOT)

POINT NO.	CONTROL POINT/ BENCHMARK DESCRIPTION	GROUND VALUE NORTHING COORDINATE	GROUND VALUE EASTING COORDINATE	ELEV.
1	CP1 /IB4 W CAP BASE	996651.33	2835160.01	1005.91
10	CP10 IB4 W CAP	996709.77	2835166.68	1004.75
11	CP11 /IB4 W CAP	996282.25	2835096.83	1009.27
2502	BM1 / SQUARE ON INLET	996690.68	2835166.32	1005.01

PREPARED & SUBMITTED BY:

BHC RHODES
OVERLAND PARK, KANSAS

ERIC BYRD, P.E.

09/11/2024
DATE

APPROVED:

BY THE CITY OF LEE'S SUMMIT, MISSOURI.

CITY ENGINEER

DATE _____



BHC is a trademark of Brungardt Henomichl & Company, P.A.

HCA LSMC ASC
1950 SE Shenandoah Drive
LEE'S SUMMIT, MO 64063

SEWER RELOCATION AND WATER ABANDONMENT
HCA LSCM ASC
LEE'S SUMMIT, MO 64063
COVER SHEET

Design:	EB	Drawn:	JS
Checked:	EB		
Issue Date:	12/21/2022		
Project Number:	34660		

1

Sep 11, 2024 - 8:37am Plotted By: Eric Byrd V:\034660-hca lsmc asc\04-DWG\Eng\Sheet\Sewer\034660-SHRS-00RALL-SS.dwg Layout: Sanitary Sewer Overall Plan

X 00 UTILITY CONSTRUCTION NOTES

W - WATER SERVICE INFORMATION - CITY OF LEE'S SUMMIT

- 01 REMOVE EXISTING 6" WATER MAIN FROM EXISTING VALVE AT SOUTH END OF SITE TO THE NORTH END OF THE PROJECT SITE. GENERAL LENGTHS ARE PROVIDED BELOW.
02 REMOVE EXISTING 6" WATER VALVE.
03 REMOVE 10' SECTION OF WATER MAIN PIPE.
04 END OF PIPE SHALL BE SEALED WITH A 1-FOOT THICK PLUG OF NON-SHRINK GROUT SEALED WITH A PORTLAND CEMENT GROUT.
05 EXISTING WATER MAIN PIPE TO BE ABANDONED IN PLACE SHALL HAVE THE WATER DRAINED OUT TO THE FULLEST EXTENT PRACTICABLE PRIOR TO HAVING THE ENDS SEALED.
06 INSTALL FIRE HYDRANT, 6" GATE VALVE, AND THRUST BLOCKING AT END OF REMOVED PIPE

UTILITY GENERAL NOTES

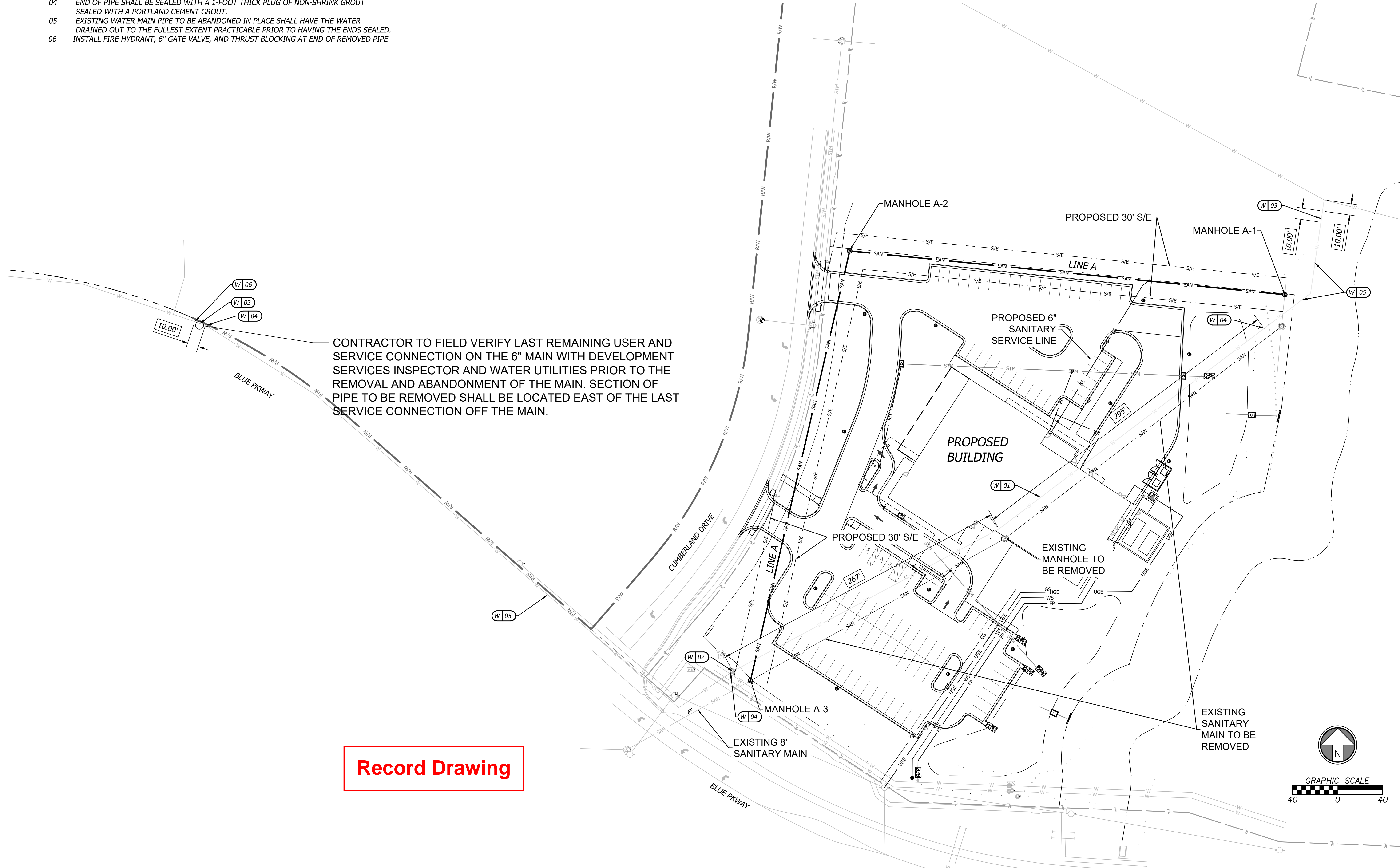
1. CONTRACTOR SHALL REFER TO ALL SPECIFICATIONS, GUIDELINES, AND INSTALLATION DRAWINGS FROM THE CITY OF LEE'S SUMMIT.
2. CONTRACTOR TO ENSURE 18" MINIMUM SEPARATION BETWEEN WATER MAIN AND STORM/SANITARY LINES AT CROSSINGS PER LEE'S SUMMIT DESIGN STANDARDS. CONTRACTOR TO CALL CIVIL IF ANY CONFLICTS BETWEEN UTILITIES ARE FOUND.
3. CONTRACTOR TO RESTORE EXISTING CONDITIONS IF DEMOLISHED/DAMAGED DURING CONSTRUCTION TO MEET CITY OF LEE'S SUMMIT STANDARDS.

RECORD
DRAWING

DATE: 09/11/2024

CONTRACTOR TO FIELD VERIFY LAST REMAINING USER AND SERVICE CONNECTION ON THE 6" MAIN WITH DEVELOPMENT SERVICES INSPECTOR AND WATER UTILITIES PRIOR TO THE REMOVAL AND ABANDONMENT OF THE MAIN. SECTION OF PIPE TO BE REMOVED SHALL BE LOCATED EAST OF THE LAST SERVICE CONNECTION OFF THE MAIN.

Record Drawing



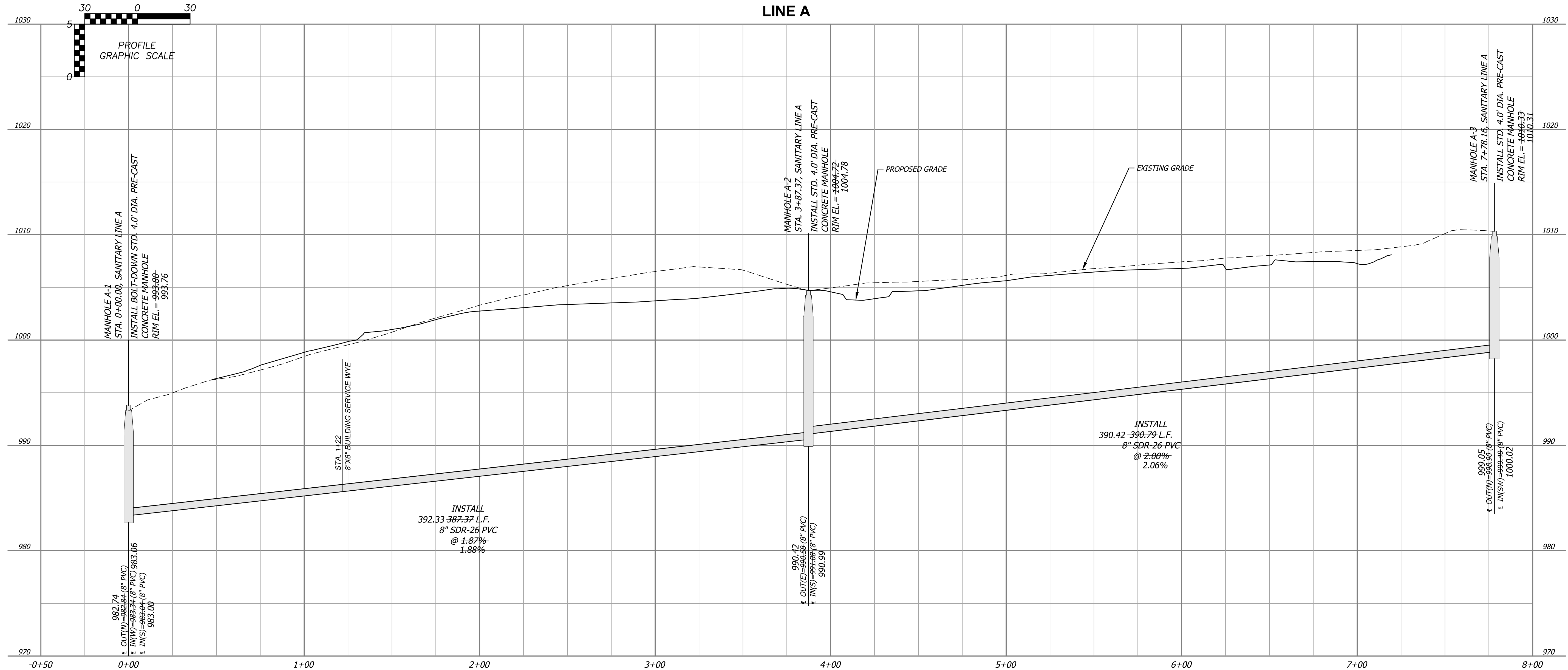
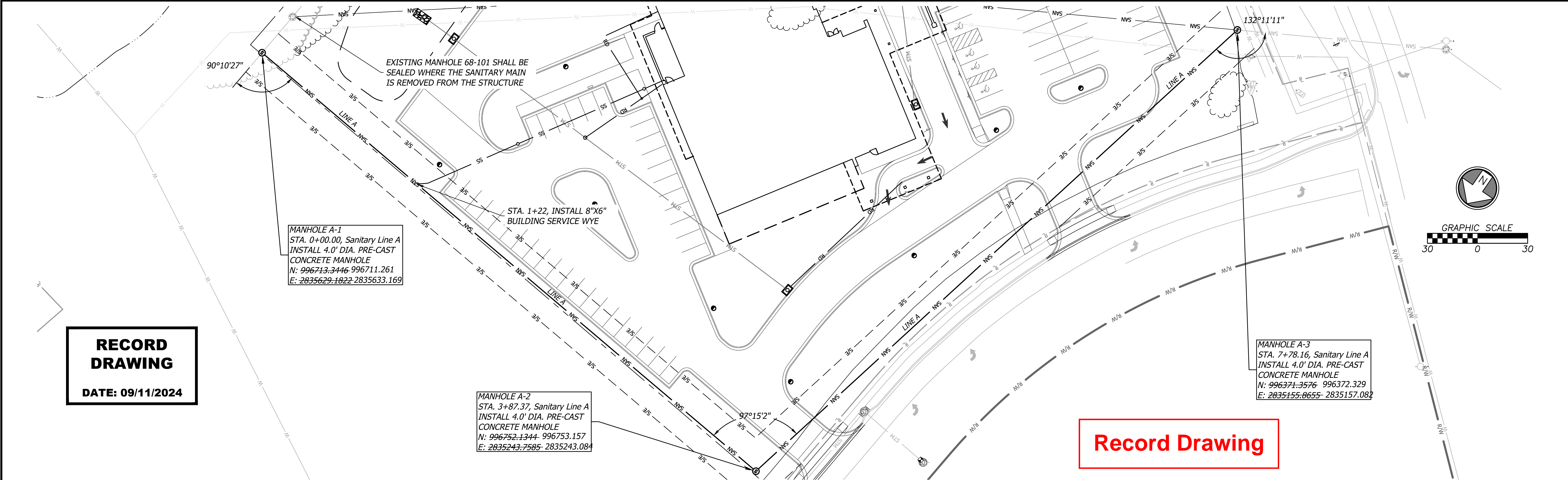
Rev.	Date	Description	By	App.
1	9/11/24	Record Drawing		
2	2/1/23	City Comments		



Prepared For:
HCA LSMC ASC
1950 E Shenandoah Drive
LEE'S SUMMIT, MO 64063

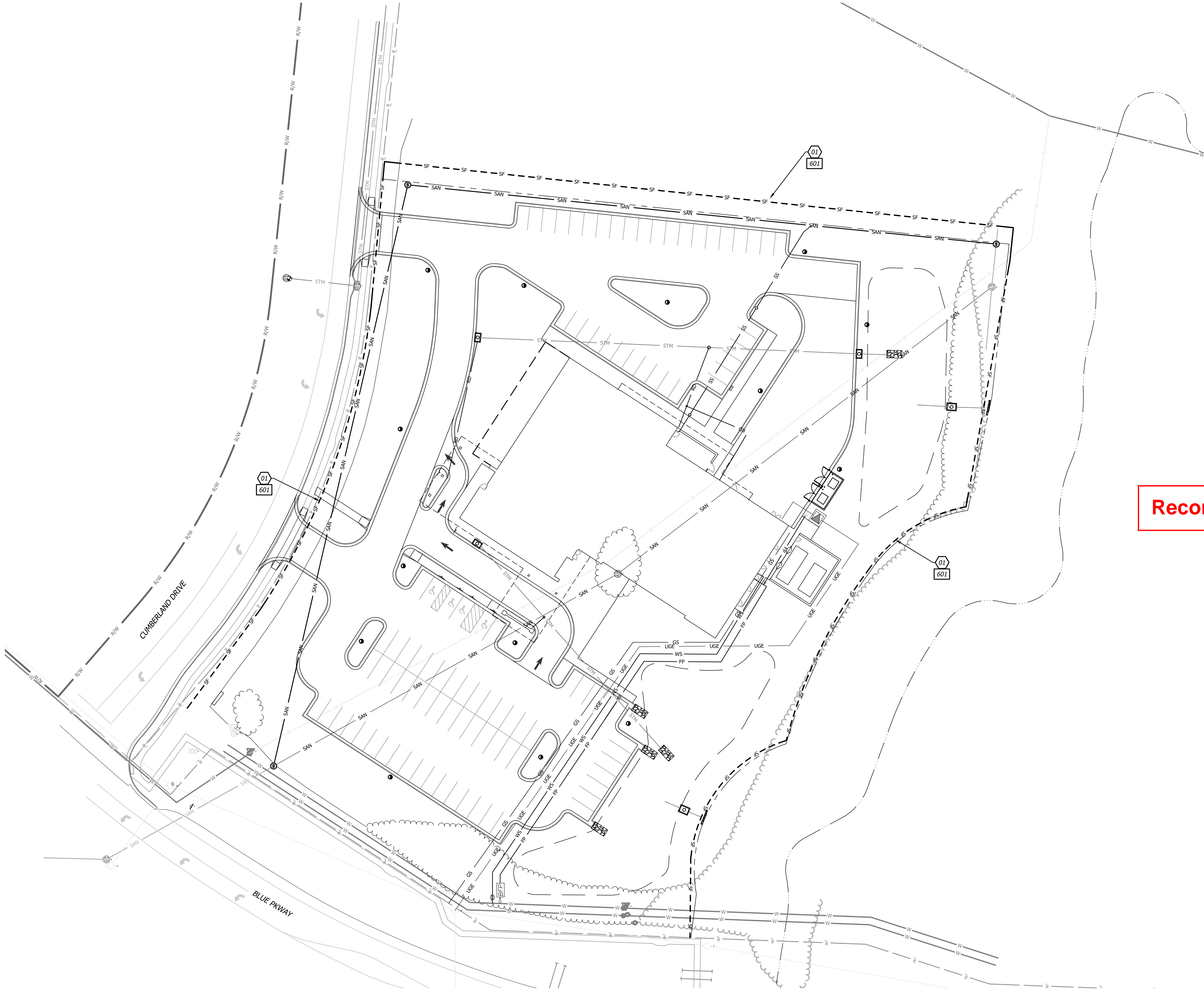
SEWER RELOCATION AND WATER ABANDONMENT
HCA LSMC ASC
LEE'S SUMMIT, MO 64063
GENERAL LAYOUT

Design: EB Drawn: JS
Checked: EB
Issue Date: 12/21/2022
Project Number: 34660



SEWER RELOCATION AND WATER ABANDONMENT HCA LSMC ASC LEE'S SUMMIT, MO 64063		Sanitary Plan and Profile	
Design: EB Drawn: JS		Checked: EB	
Issue Date: 12/21/2022		Project Number: 34660	
Prepared For: HCA LSMC ASC 1950 Shenandoah Drive LEE'S SUMMIT, MO 64063		Rev. Date Description By App.	
		1 9/11/24 Record Drawing City Comments	
		2 9/11/24	
		3 9/11/24	
		4 9/11/24	
		5 9/11/24	
		6 9/11/24	
		7 9/11/24	
		8 9/11/24	
		9 9/11/24	
		10 9/11/24	
		11 9/11/24	
		12 9/11/24	
		13 9/11/24	
		14 9/11/24	
		15 9/11/24	
		16 9/11/24	
		17 9/11/24	
		18 9/11/24	
		19 9/11/24	
		20 9/11/24	
		21 9/11/24	
		22 9/11/24	
		23 9/11/24	
		24 9/11/24	
		25 9/11/24	
		26 9/11/24	
		27 9/11/24	
		28 9/11/24	
		29 9/11/24	
		30 9/11/24	
		31 9/11/24	
		32 9/11/24	
		33 9/11/24	
		34 9/11/24	
		35 9/11/24	
		36 9/11/24	
		37 9/11/24	
		38 9/11/24	
		39 9/11/24	
		40 9/11/24	
		41 9/11/24	
		42 9/11/24	
		43 9/11/24	
		44 9/11/24	
		45 9/11/24	
		46 9/11/24	
		47 9/11/24	
		48 9/11/24	
		49 9/11/24	
		50 9/11/24	
		51 9/11/24	
		52 9/11/24	
		53 9/11/24	
		54 9/11/24	
		55 9/11/24	
		56 9/11/24	
		57 9/11/24	
		58 9/11/24	
		59 9/11/24	
		60 9/11/24	
		61 9/11/24	
		62 9/11/24	
		63 9/11/24	
		64 9/11/24	
		65 9/11/24	
		66 9/11/24	
		67 9/11/24	
		68 9/11/24	
		69 9/11/24	
		70 9/11/24	
		71 9/11/24	
		72 9/11/24	
		73 9/11/24	
		74 9/11/24	
		75 9/11/24	
		76 9/11/24	
		77 9/11/24	
		78 9/11/24	
		79 9/11/24	
		80 9/11/24	
		81 9/11/24	
		82 9/11/24	
		83 9/11/24	
		84 9/11/24	
		85 9/11/24	
		86 9/11/24	
		87 9/11/24	
		88 9/11/24	
		89 9/11/24	
		90 9/11/24	
		91 9/11/24	
		92 9/11/24	
		93 9/11/24	
		94 9/11/24	
		95 9/11/24	
		96 9/11/24	
		97 9/11/24	
		98 9/11/24	
		99 9/11/24	
		100 9/11/24	
		101 9/11/24	
		102 9/11/24	
		103 9/11/24	
		104 9/11/24	
		105 9/11/24	
		106 9/11/24	
		107 9/11/24	
		108 9/11/24	
		109 9/11/24	
		110 9/11/24	
		111 9/11/24	
		112 9/11/24	
		113 9/11/24	
		114 9/11/24	
		115 9/11/24	
		116 9/11/24	
		117 9/11/24	
		118 9/11/24	
		119 9/11/24	
		120 9/11/24	
		121 9/11/24	
		122 9/11/24	
		123 9/11/24	
		124 9/11/24	
		125 9/11/24	
		126 9/11/24	
		127 9/11/24	
		128 9/11/24	
		129 9/11/24	
		130 9/11/24	
		131 9/11/24	
		132 9/11/24	
		133 9/11/24	
		134 9/11/24	
		135 9/11/24	
		136 9/11/24	
		137 9/11/24	
		138 9/11/24	
		139 9/11/24	
		140 9/11/24	
		141 9/11/24	
		142 9/11/24	
		143 9/11/24	
		144 9/11/24	
		145 9/11/24	
		146 9/11/24	
		147 9/11/24	
		148 9/11/24	
		149 9/11/24	
		150 9/11/24	
		151 9/11/24	
		152 9/11/24	
		153 9/11/24	
		154 9/11/24	
		155 9/11/24	
		156 9/11/24	
		157 9/11/24	
		158 9/11/24	
		159 9/11/24	
		160 9/11/24	
		161 9/11/24	
		162 9/11/24	
		163 9/11/24	
		164 9/11/24	
		165 9/11/24	
		166 9/11/24	
		167 9/11/24	
		168 9/11/24	
		169 9/11/24	
		170 9/11/24	
		171 9/11/24	
		172 9/11/24	
		173 9/11/24	
		174 9/11/24	
		175 9/11/24	
		176 9/11/24	
		177 9/11/24	
		178 9/11/24	
		179 9/11/24	
		180 9/11/24	
		181 9/11/24	
		182 9/11/24	
		183 9/11/24	
		184 9/11/24	
		185 9/11/24	
		186 9/11/24	
		187 9/11/24	
		188 9/11/24	
		189 9/11/24	
		190 9/11/24	
		191 9/11/24	
		192 9/11/24	
		193 9/11/24	
		194 9/11/24	
		195 9/11/24	
		196 9/11/24	
		197 9/11/24	
		198 9/11/24	
		199 9/11/24	
		200 9/11/24	
		201 9/11/24	
		202 9/11/24	
		203 9/11/24	
		204 9/11/24	
		205 9/11/24	
		206 9/11/24	
		207 9/11/24	
		208 9/11/24	
		209 9/11/24	
		210 9/11/24	
		211 9/11/24	
		212 9/11/24	
		213 9/11/24	
		214 9/11/24	
		215 9/11/24	
		216 9/11/24	
		217 9/11/24	
		218 9/11/24	
		219 9/11/24	
		220 9/11/24	
		221 9/11/24	
		222 9/11/24	
		223 9/11/24	
		224 9/11/24	
		225 9/11/24	
		226 9/11/24	
		227 9/11/24	
		228 9/11/24	
		229 9/11/24	
		230 9/11/24	
		231 9/11/24	
		232 9/11/24	
		233 9/11/24	
		234 9/11/24	
		235 9/11/24	
		236 9/11/24	
		237 9/11/24	
		238 9/11/24	
		239 9/11/24	
		240 9/11/24	
		241 9/11/24	
		242 9/11/24	
		243 9/11/24	
		244 9/11/24	
		245 9/11/24	
		246 9/11/24	
		247 9/11/24	
		248 9/11/24	
		249 9/11/24	
		250 9/11/24	
		251 9/11/24	
		252 9/11/24	
		253 9/11/24	
		254 9/11/24	
		255 9/11/24	
		256 9/11/24	
		257 9/11/24	
		258 9/11/24	
		259 9/11/24	
		260 9/11/24	
		261 9/11/24	
		262 9/11/24	
		263 9/11/24	
		264 9/11/24	
		265 9/11/24	
		266 9/11/24	
		267 9/11/24	
		268 9/11/24	
		269 9/11/24	
		270 9/11/24	
		271 9/11/24	
		272 9/11/24	
		273 9/11/24	
		274 9/11/24	
		275 9/11/24	
		276 9/11/24	
		277 9/11/24	
		278 9/11/24	
		279 9/11/24	
		280 9/11/24	
		281 9/11/24	
		282 9/11/24	
		283 9/11/24	
		284 9/11/24	
		285 9/11/24	
		286 9/11/24	
		287 9/11/24	
		288 9/11/24	
		289 9/11/24	
		290 9/11/24	
		291 9/11/24	
		292 9/11/24	
		293 9/11/24	
		294 9/11/24	
		295 9/11/24	
		296 9/11/24	
		297 9/11/24	
		298 9/11/24	
		299 9/11/24	
		300 9/11/24	
		301 9/11/24	
		302 9/11/24	
		303 9/11/24	
		304 9/11/24	
		305 9/11/24	
		306 9/11/24	
		307 9/11/24	
		308 9/11/24	
		309 9/11/24	
		310 9/11/24	
		311 9/11/24	
		312 9/11/24	
		313 9/11/24	
		314 9/11/24	
		315 9/11/24	
		316 9/11/24	
		317 9/11/24	
		318 9/11/24	
		319 9/11/24	
		320 9/11/24	
		321 9/11/24	
		322 9/11/24	
		323 9/11/24	
		324 9/11/24	
		325 9/11/24	
		326 9/11/24	
		327 9/11/24	
		328 9/11/24	
		329 9/11/24	
		330 9/11/24	
		331 9/11/24	
		332 9/11/24	
		333 9/11/24	
		334 9/11/24	
		335 9/11/24	
		336 9/11/24	
		337 9/11/24	
		338 9/11/24	
		339 9/11/24	
		340 9/11/24	
		341 9/11/24	
		342 9/11/24	
		343 9/11/24	
		344 9/11/24	
		345 9/11/24	
		346 9/11/24	
		347 9/11/24	
		348 9/11/24	
		349 9/11/24	
		350 9/11/24	
		351 9/11/24	
		352 9/11/24	
		353 9/11/24	
		354 9/11/24	
		355 9/11/24	
		356 9/11/24	
		357 9/11/24	
		358 9/11/24	
		359 9/11/24	
		360 9/11/24	
		361 9/11/24	
		362 9/11/24	
		363 9/11/24	
		364 9/11/24	
		365 9/11/24	
		366 9/11/24	
		367 9/11/24	
		368 9/11/24	
		369 9/11/24	
		370 9/11/24	
		371 9/11/24	
		372 9/11/24	
		373 9/11/24	
		374 9/11/24	
		375 9/11/24	
		376 9/11/24	
		377 9/11/24	
		378 9/11/24	
		379 9/11/24	
		380 9/11/24	
		381 9/11/24	
		382 9/11/24	
		383 9/11/24	
		384 9/11/24	
		385 9/11/24	
		386 9/11/24	
		387 9/11/24	
		388 9/11/24	
		389 9/11/24	
		390 9/11/24	
		39	

Sep. 11, 2024 - 8:37am Plotted By: Eric Byrd V:\034660-hca lenc.oss\04-DWG\Eng\Sheet\Sanitary Sewer\034660-SHFS-EFSN-SS.dwg Layout: SS EFSN CTRL PLAN



- CONSTRUCTION NOTES**
- 01 FILTER FABRIC SILT FENCE TO BE PLACED

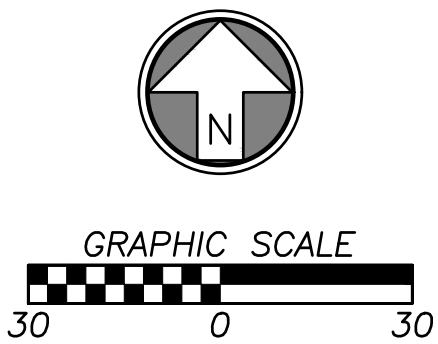
**RECORD
DRAWING**

DATE: 09/11/2024

- DETAILS**
- SEE DETAIL (SHEET 5) FOR THE FOLLOWING
- 601 FILTER FABRIC SILT FENCE

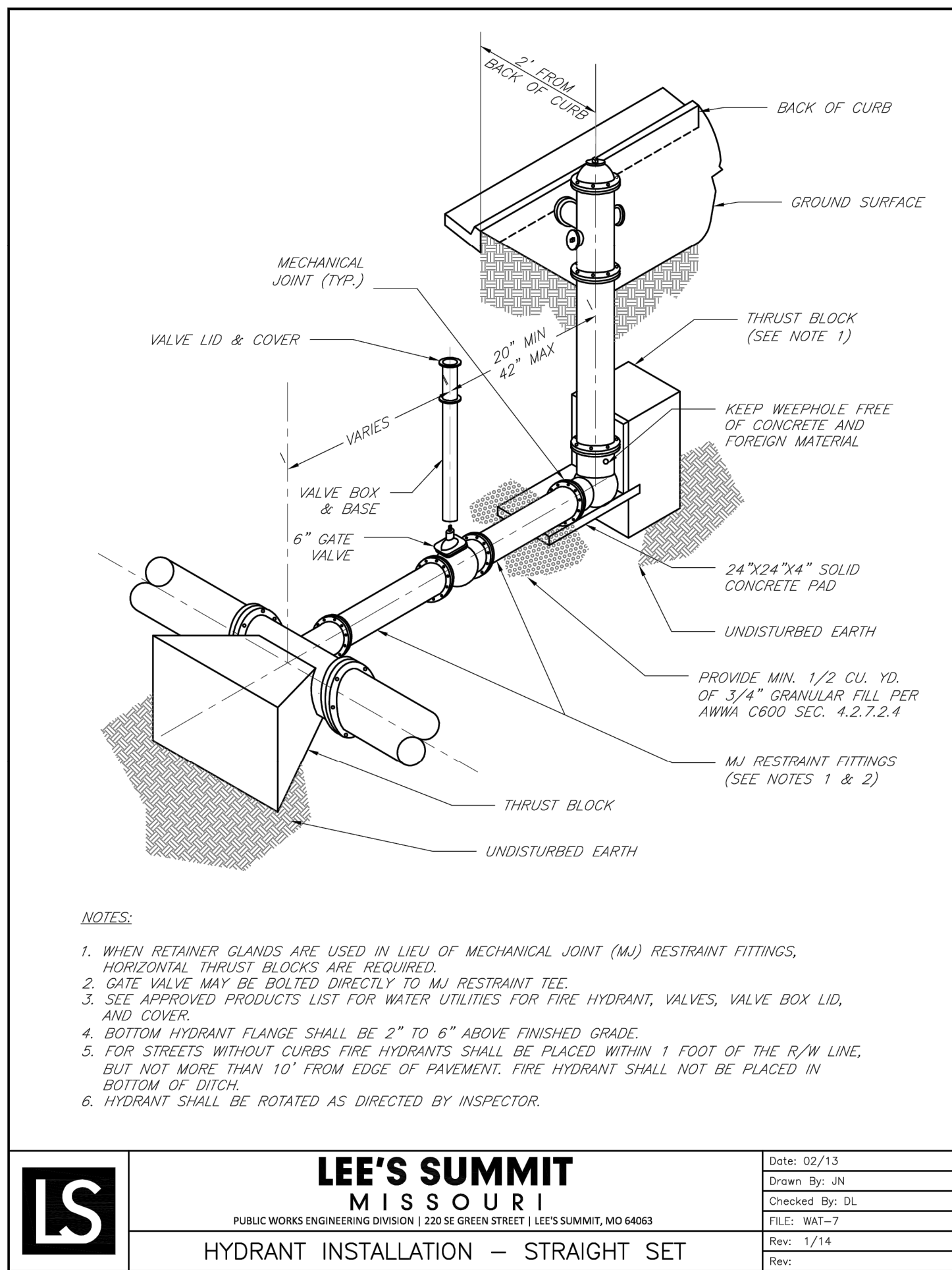
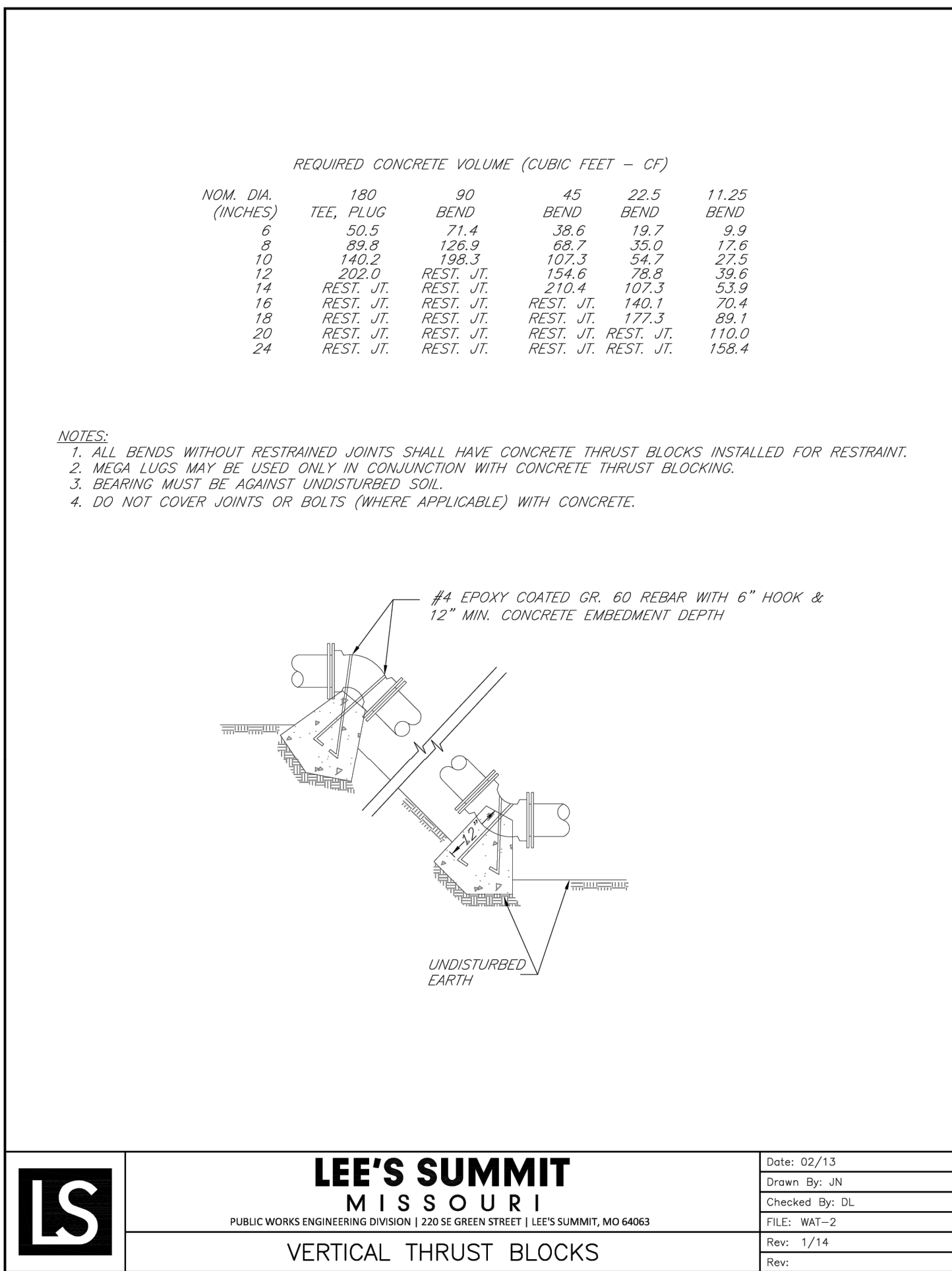
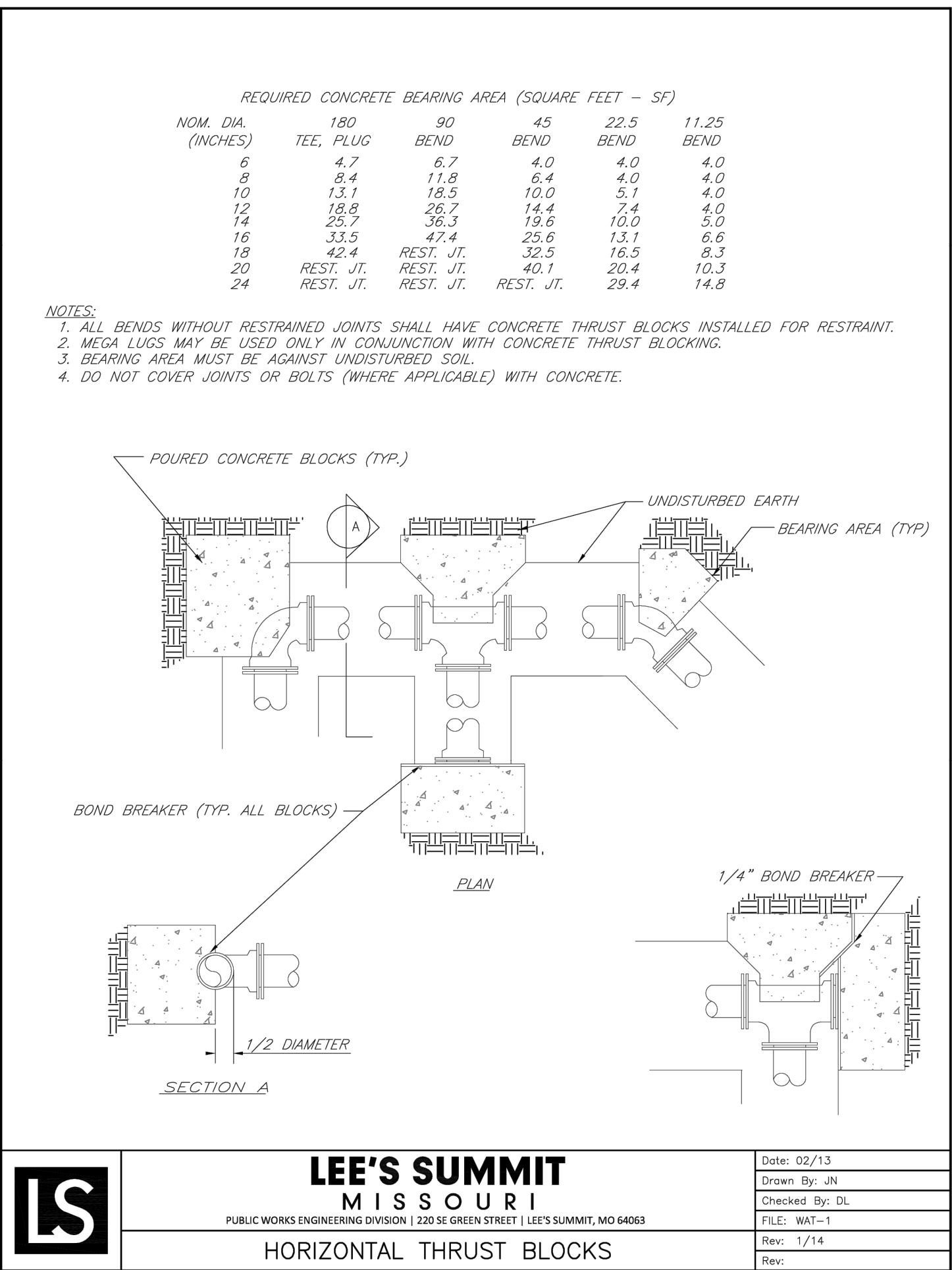
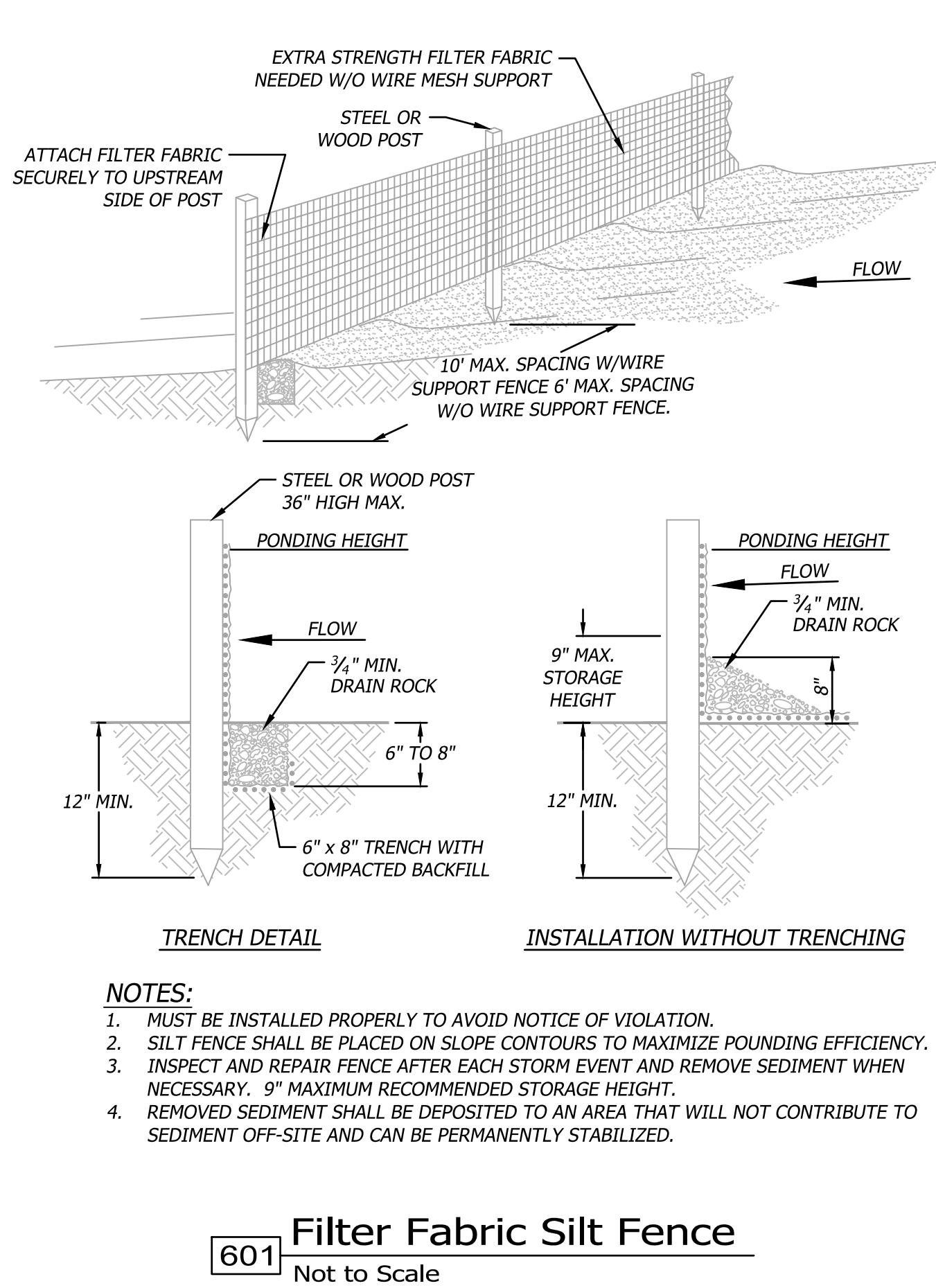
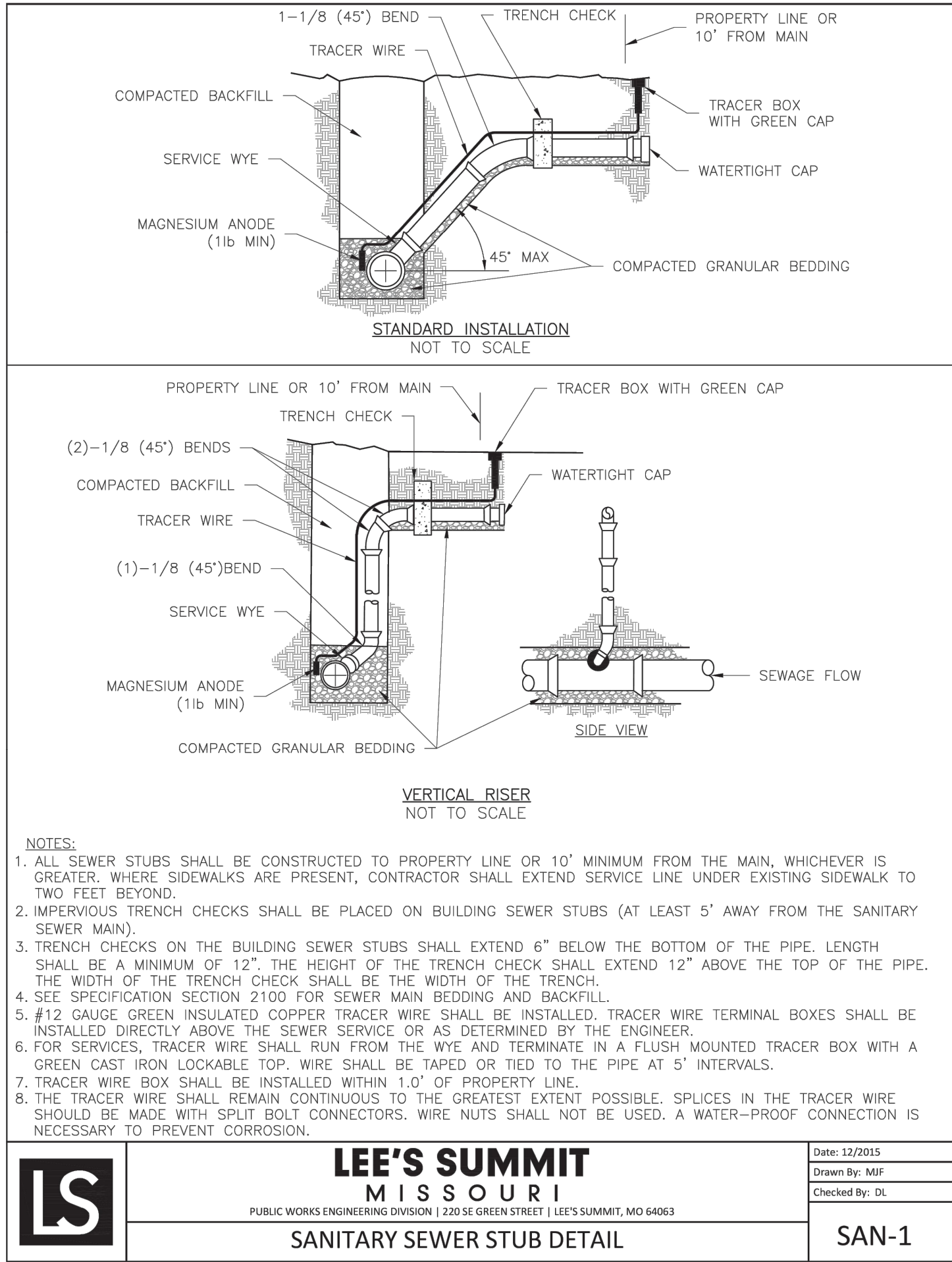
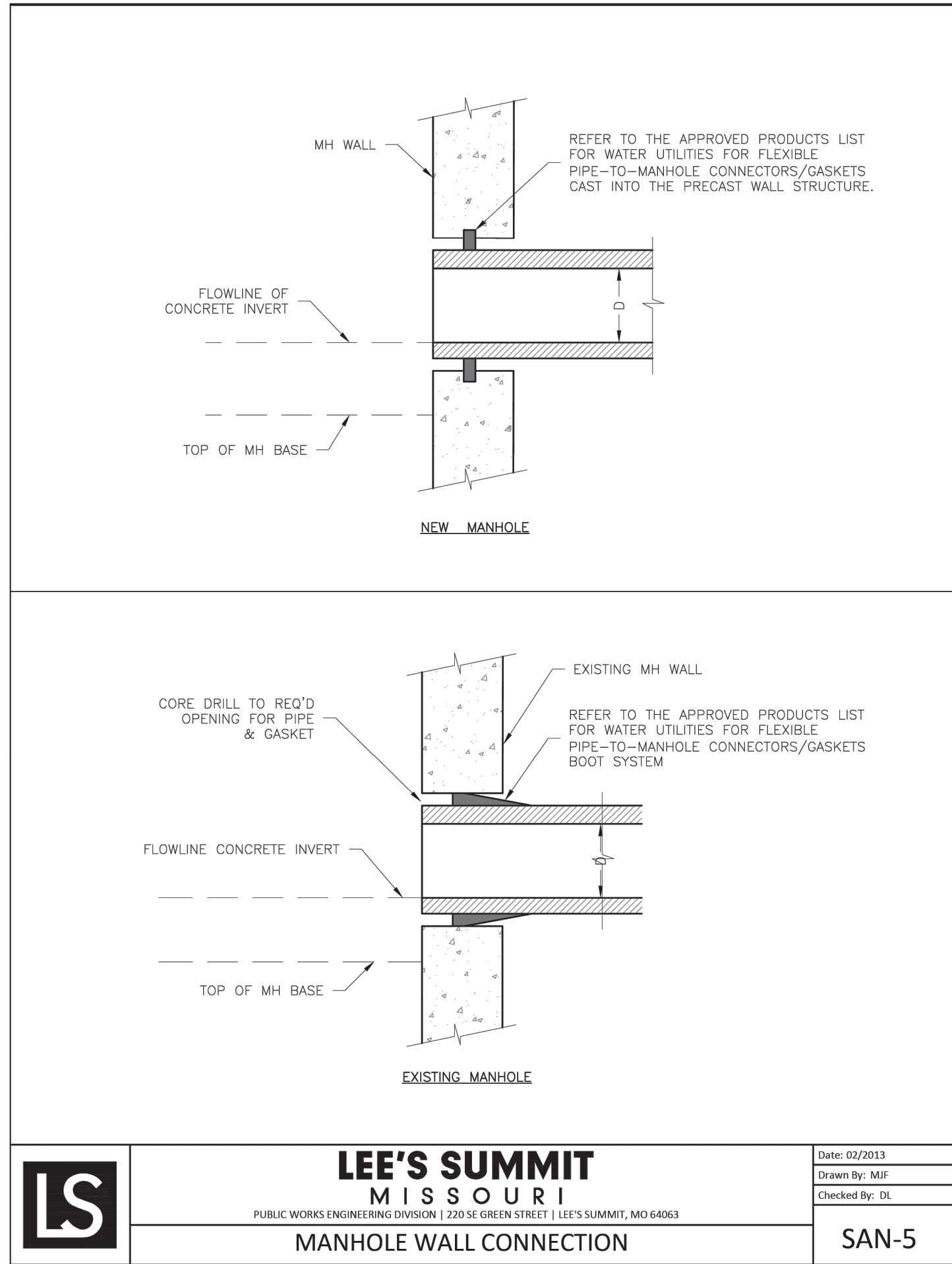
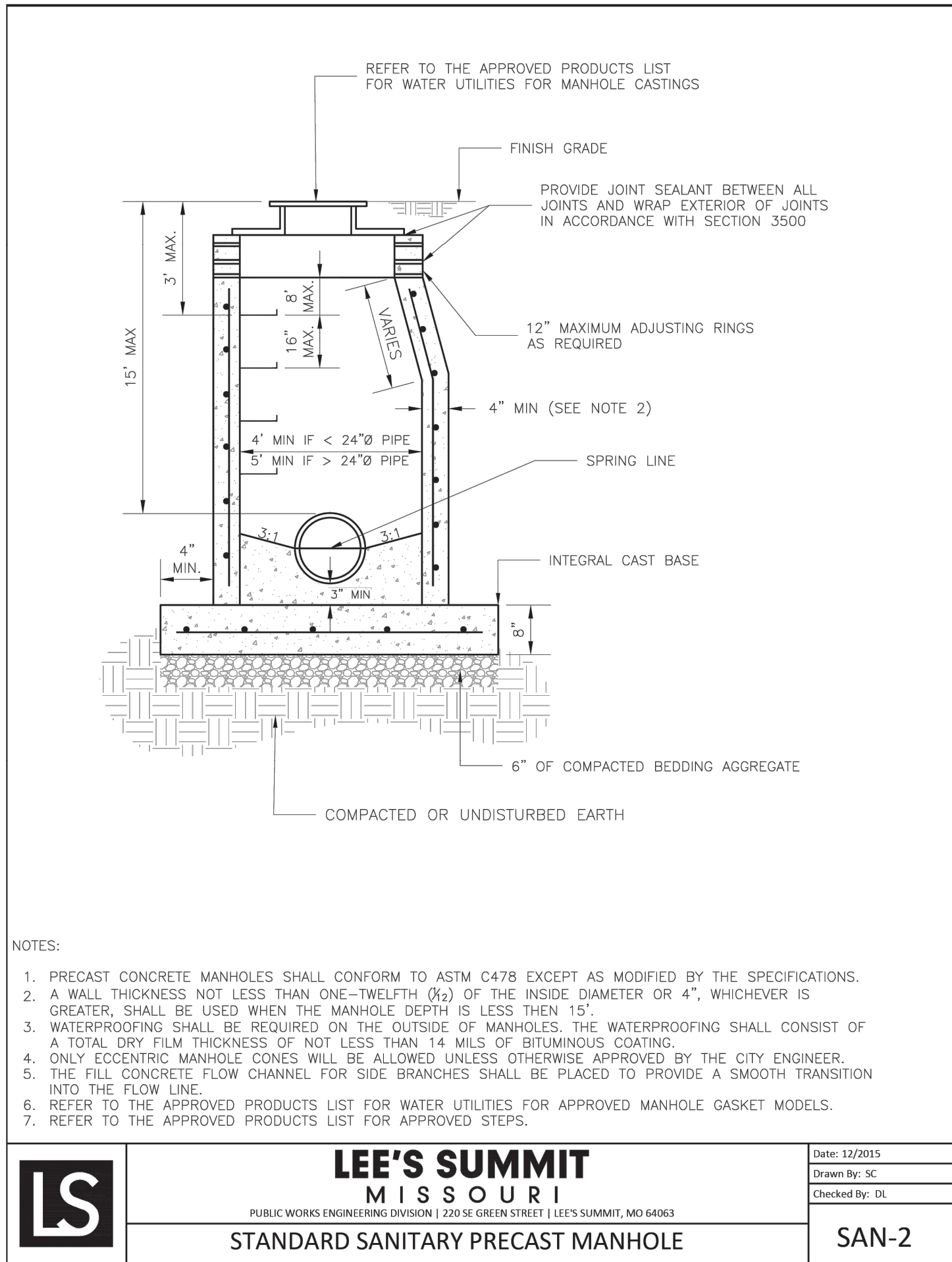
EROSION CONTROL LEGEND

--- SF --- SILT/SEDIMENT FENCE

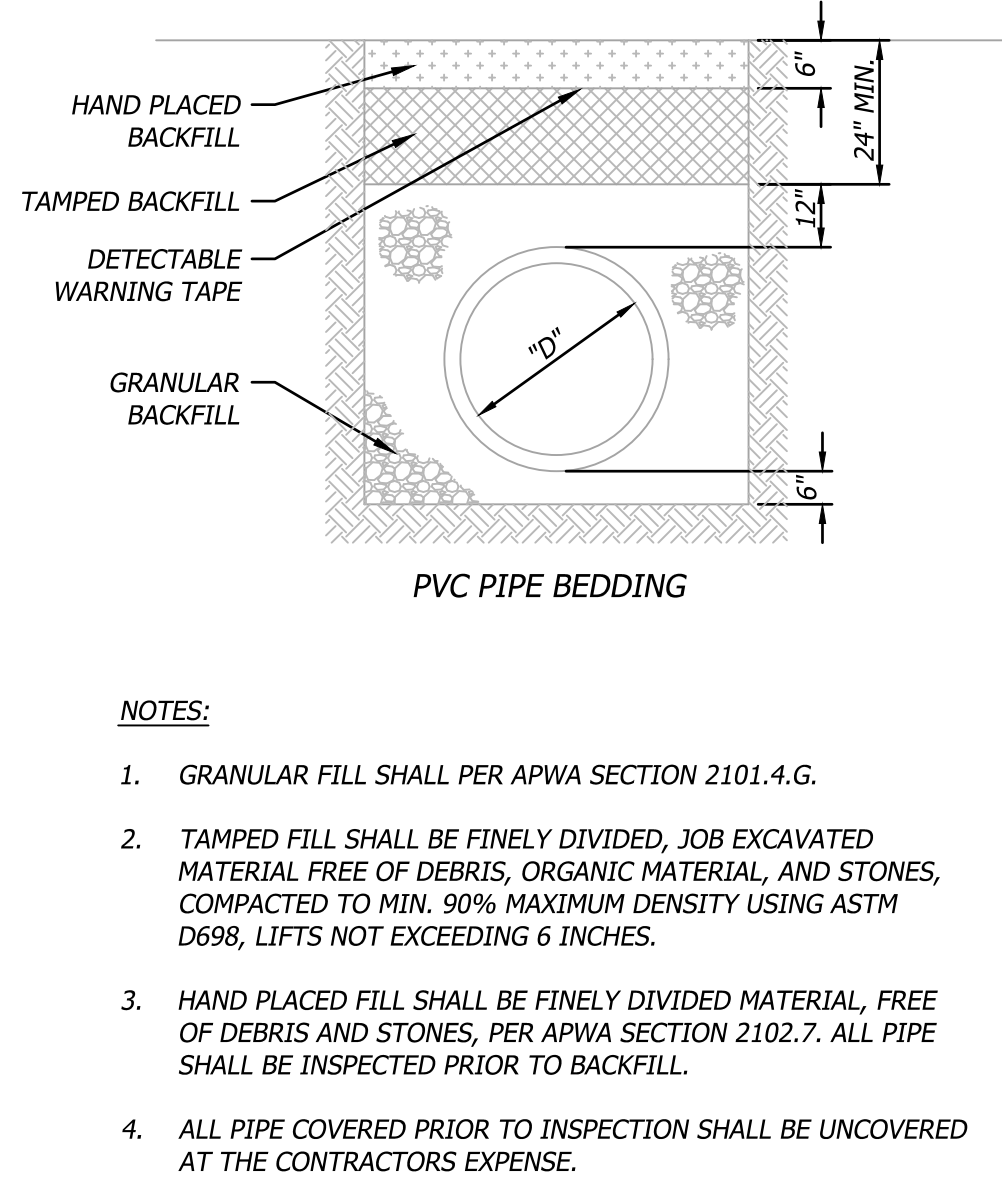


Record Drawing

SEWER RELOCATION AND WATER ABANDONMENT HCA LSMC ASC LEE'S SUMMIT, MO 64063 EROSION CONTROL PLAN		Prepared For: HCA LSMC ASC 1950 Shenandoah Drive LEE'S SUMMIT, MO 64063					
Design: EB Drawn: JS		Checked: EB		Issue Date: 12/21/2022		Project Number: 34660	
4				Rev.		Date	
				1		9/11/24	
				City Comments		Record Drawing	
				By		App.	



Record Drawing



RECORD
DRAWING
DATE: 09/11/2024