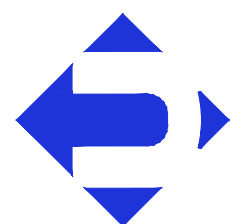


UHL ENGINEERING, INC.
7211 W. 98th Terrace, Suite 110
Overland Park, Kansas 66212
(913) 385-2670
www.uhlengineering.com



ACADEMY BANK ITM
STREETS WEST OF PRYOR DEVELOPMENT
LEE'S SUMMIT, MO 64081

DICKINSON FINANCIAL
CORPORATION
1111 Main Street #1600
Kansas City, MO 64105
816.472.5422

OWNER:

PROJECT:

COMPANY:

PROFESSIONAL SEAL:

ISSUE DATE: 24 JUN 2024

SHEET NAME:

SITE DETAILS & DEMOLITION PLAN

SHEET NUMBER:

C1.0

REVISION/DESCRIPTION	DATE
3 Response to City Comments	4 SEPT 2024
2 Response to City Comments	23 AUG 2024
1 Response to City Comments	08 AUG 2024



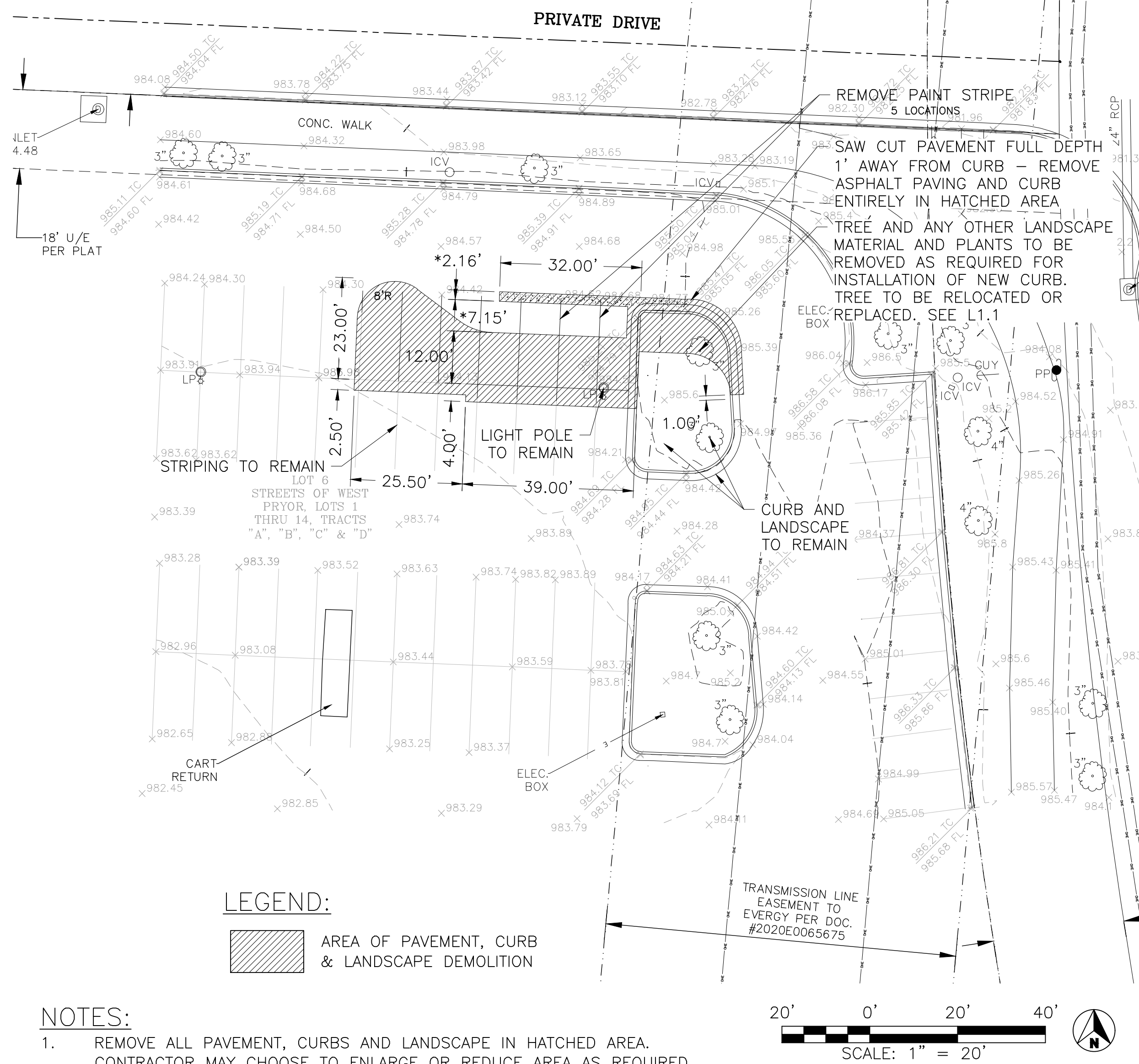
UTILITY NOTE:

Visual indications of utilities are as shown. underground locations shown, as furnished by their lessors, are approximate and should be verified in the field at time of construction. For actual field locations of underground utilities, call 811 or 1-800-344-7483 (Dig Rite)

The contractor shall adhere to the provisions of the senate bill number 583, 78th general assembly of the State of Missouri. The bill requires that any person or firm doing excavation on public right-of-way do so only after giving notice to, & obtaining information from, utility companies. State law requires 48 hours advance notice. call 1-800-dig-rite or 811.

SITE DEMOLITION PLAN:

NOTE: SEVEN (7) PARKING SPACES ARE REMOVED FROM THE EXISTING PARKING LOT TO INSTALL THE ITM.



NOTES:

- REMOVE ALL PAVEMENT, CURBS AND LANDSCAPE IN HATCHED AREA. CONTRACTOR MAY CHOOSE TO ENLARGE OR REDUCE AREA AS REQUIRED FOR INSTALLATION OF PROPOSED IMPROVEMENTS. *RAISED MEDIAN MAY USE EDGE OF REMOVED ASPHALT PAVEMENT AS FORM FOR CONCRETE BELOW ASPHALT SURFACE.
- REMOVE PAINT STRIPE WHERE SHOWN BY GRINDING, SANDBLASTING OR OTHER APPROVED METHOD.

LEE'S SUMMIT
MISSOURI

STANDARD DETAILS
CITY OF LEE'S SUMMIT, MO
LEE'S SUMMIT, JACKSON COUNTY, MO
Curb & Gutter Detail

Drawn By: AM
Checked By: DL
Date: 08/2023
Proj. #: GEN-4

GEN-4

CURB & GUTTER DETAIL AT RAMP (ADA SLOPE REQUIREMENTS)

OUTER LINE

CONCRETE FILL (DEPTH VARIES, 4" MINIMUM)

2" ASPHALTIC CONCRETE SURFACE COURSE

CURB & GUTTER

SAW CUT TO AGGREGATE BASE OR SUBGRADE

VARIES 3" TO 6"

EXISTING PAVEMENT

COMPACTED STABLE SUBGRADE

12"

EXTEND BASE MATERIAL 12" BEYOND BACK OF CURB

GENERAL NOTES

1. 3/4" ISOLATION JOINTS WITH 2 (2'-#5 BAR) SMOOTH DOWELS SHALL BE PLACED AT RADIUS POINTS AND AT 150' INTERVALS. THESE DOWEL BARS SHALL BE GREASED AND WRAPPED ON ONE END WITH EXPANSION TUBES.

2. 3" DEEP CONTRACTION JOINTS SHALL BE INSTALLED AT APPROXIMATELY 10' INTERVALS. THESE JOINTS SHALL PASS ACROSS THE ENTIRE CURB SECTION.

3. CONCRETE FILL SHALL HAVE UNIFORM AND SMOOTH FINISH

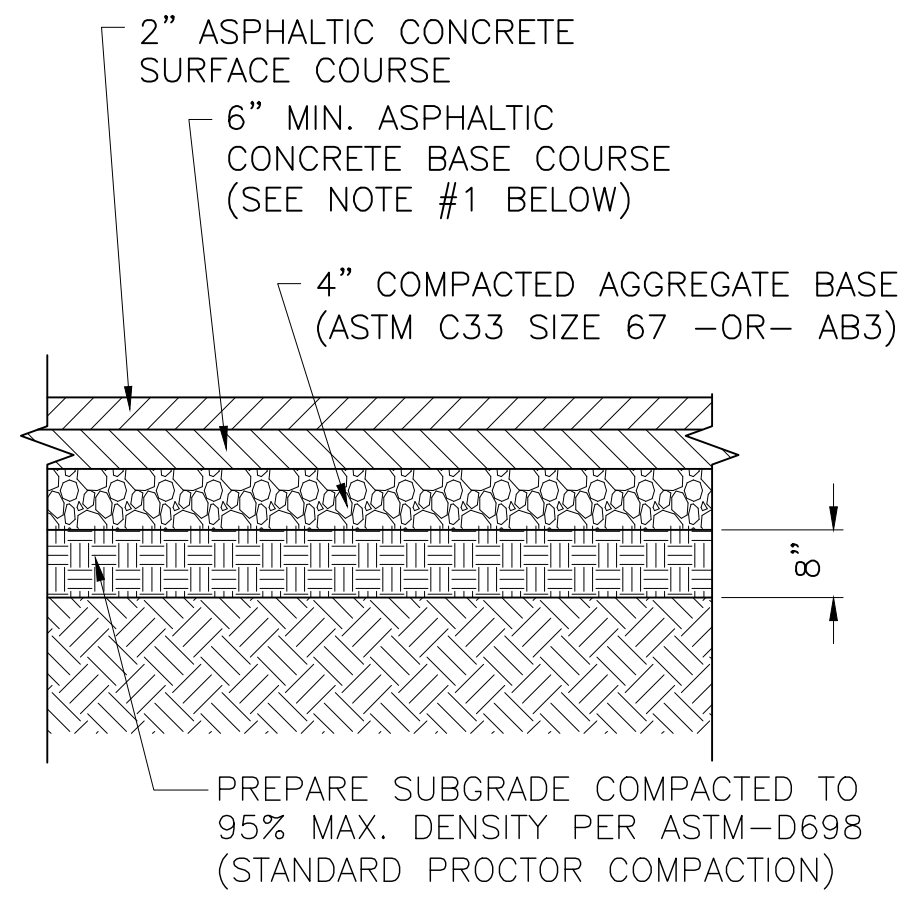
4. KCMMB 4K CONCRETE SHALL BE USED FOR ALL CURB.

5. ASPHALTIC CONCRETE SURFACE COURSE SHALL CONFORM TO STANDARD SPECIFICATIONS SECTION 2205.2.

6. CURBS FOR NEW STREETS SHALL BE BUILT ON ASPHALT OR AGGREGATE BASE AS SHOWN IN TYPICAL SECTION DETAIL.

7. WHITE CURING COMPOUND MUST BE APPLIED UNIFORMLY TO THE CONCRETE SURFACE IMMEDIATELY AFTER FINAL FINISHING.

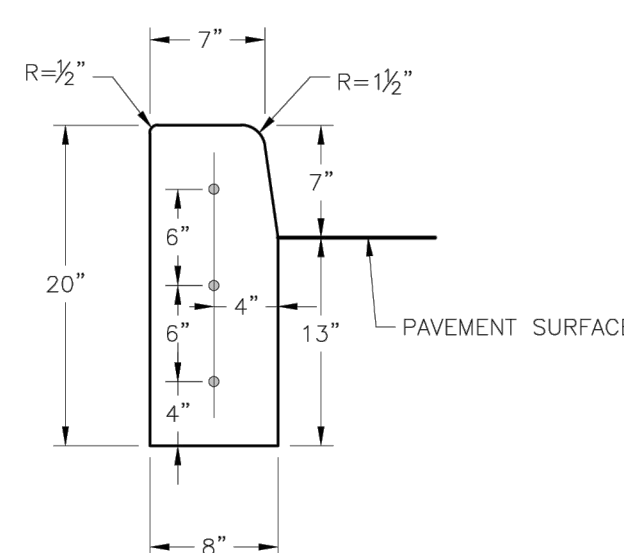
8. ALL DOWELS & TIE BARS SHALL BE EPOXY COATED.



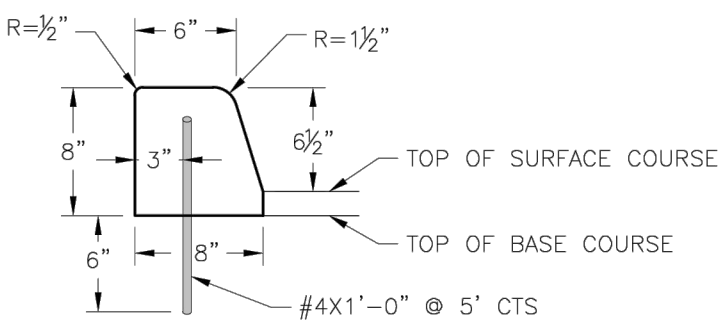
ASPHALT PAVEMENT NOT TO SCALE

ASPHALT NOTES:

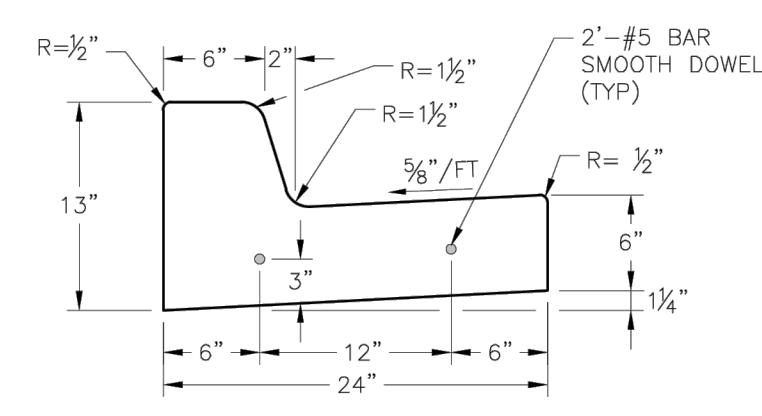
- ALL ASPHALT MATERIALS SHALL CONFORM TO THE KCMMB MATERIALS SPECIFICATION section 2200 AS AMENDED BY THE CITY OF LEE'S SUMMIT, CURRENT EDITION.
- ASPHALT THICKNESS INDICATED IS A MINIMUM, IF EXISTING ASPHALT AND BASE MATERIAL IS THICKER THAN DETAIL, MATCH EXISTING THICKNESS.



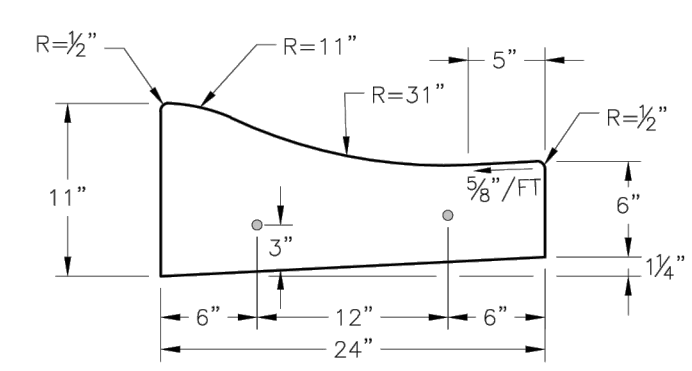
STRAIGHT CURB
(TYPE C-1)



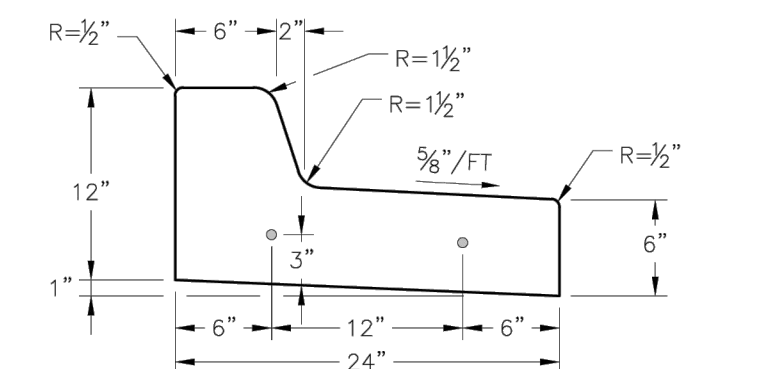
DOWELLED CURB
(TYPE DC)



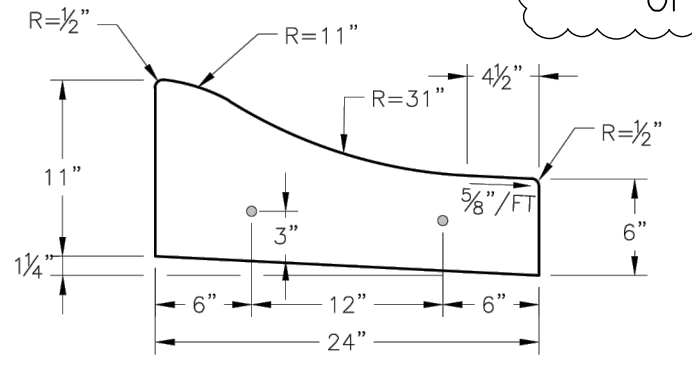
STRAIGHT BACK CURB & GUTTER
(TYPE CG-1)



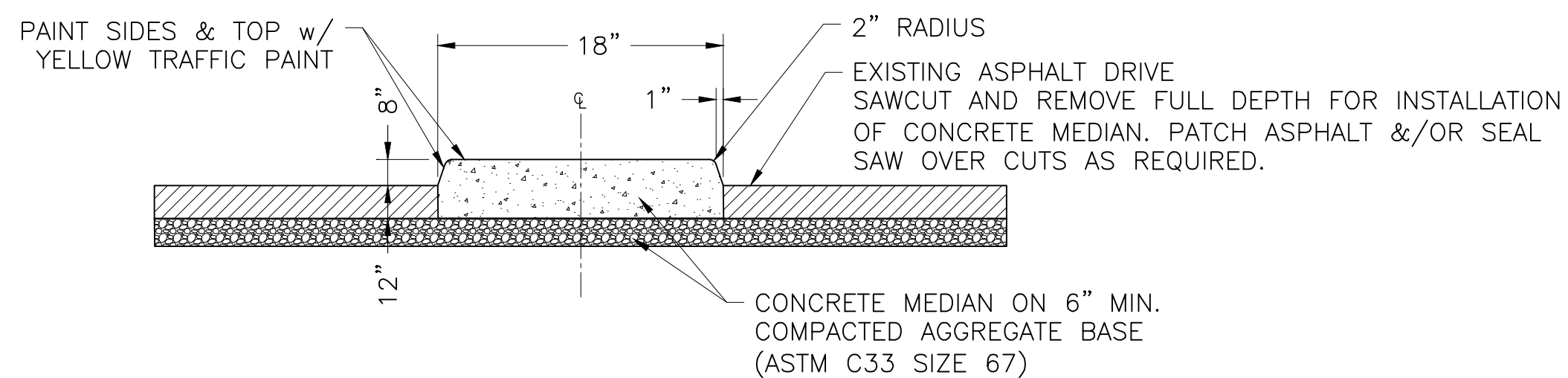
ROLL BACK CURB & GUTTER
(TYPE CG-2)



STRAIGHT BACK DRY CURB & GUTTER
(TYPE CG-1 DRY)



ROLL BACK DRY CURB & GUTTER
(TYPE CG-2 DRY)



RAISED CONCRETE MEDIAN NOT TO SCALE

1. ALL CONSTRUCTION SHALL CONFORM TO THE AHJ'S MUNICIPAL CODE AND THE KC METRO CHAPTER OF THE AMERICAN PUBLIC WORKS ASSOCIATION. THE FOLLOWING SECTIONS FROM AMERICAN PUBLIC WORKS ASSOCIATION (KANSAS CITY METRO CHAPTER) "STANDARD SPECIFICATIONS AND DESIGN CRITERIA," SHALL BE INCORPORATED HEREIN:

SECTION 2100 GRADING & SITE PREPARATION
SECTION 2150 EROSION AND SEDIMENT CONTROL
SECTION 2200 PAVING

A. ALL ASPHALT MATERIALS SHALL CONFORM TO THE KCMMB MATERIALS SPECIFICATION, CURRENT EDITION.

B. ALL CONCRETE MATERIALS FOR PAVING, CURB AND GUTTER, SIDEWALKS, PATHS, COMMERCIAL DRIVEWAYS AND OTHER PAVEMENTS SHALL CONFORM TO THE KCMMB SPECIFICATIONS AS AMENDED BY THE CITY OF LEES SUMMIT, CURRENT EDITION.

2. ALL TRAFFIC CONTROL SHALL BE IN CONFORMANCE WITH THE MANUAL OF UNIFORM TRAFFIC CONTROL DEVICES (MUTCD) CURRENT EDITION.
3. COMPACTION TESTS SHALL BE REQUIRED AS DIRECTED BY THE ENGINEER. ALL COMPACTION TESTS ON MATERIAL WHICH MEETS OR EXCEEDS THE REQUIRED DENSITY SHALL BE PAID FOR BY THE OWNER.

4. THE LOCATION OF THE UTILITY LINES, AS SHOWN ON THESE PLANS, ARE APPROXIMATE AND HAVE BEEN INDICATED TO THE GREATEST EXTENT AVAILABLE TO THE ENGINEER. THE SERVICE LINES FROM THE MAINS TO EXISTING BUILDINGS ARE NOT SHOWN; HOWEVER, THE CONTRACTOR IS RESPONSIBLE FOR OBTAINING THE EXACT LOCATIONS OF THE UTILITIES AND SHALL BE HELD RESPONSIBLE FOR ANY DAMAGES DONE TO THESE LINES DURING CONSTRUCTION.

5. THE CONTRACTOR IS RESPONSIBLE FOR:

5.1. PROTECTION AND /OR RESTORATION OF ALL PROPERTY AND SECTION CORNERS. ANY PROPERTY/SECTION CORNERS THAT GET DISTURBED OR DAMAGED BY CONSTRUCTION ACTIVITIES SHALL BE RESET BY A REGISTERED LAND SURVEYOR IN THE STATE OF MISSOURI, AT THE CONTRACTORS EXPENSE.

5.2. THE RESTORATION OF THE RIGHT-OF-WAY AND FOR DAMAGED IMPROVEMENTS SUCH AS CURBS, SIDEWALKS, DRIVEWAYS, STREET/PEDESTRIAN LIGHTS, TRAFFIC SIGNAL JUNCTION BOXES, LOOP LEAD INS, AND POLES, IRRIGATION SYSTEMS, ETC. DAMAGED ITEMS SHALL BE REPAIRED IN CONFORMANCE WITH THE LATEST CITY STANDARDS AND TO THE APPROVAL OF THE CITY.

5.3. COMPLYING WITH STATE LAW REQUIRING ANY PERSON OR FIRM DOING EXCAVATION ON THE PUBLIC RIGHT-OF-WAY DO SO ONLY AFTER GIVING NOTICE TO AND OBTAINING INFORMATION FROM UTILITY COMPANIES.

- 5.4. PROVIDING EROSION AND SEDIMENT CONTROL BMP'S TO PREVENT SEDIMENT FROM REACHING PAVED AREAS, STORM SEWER SYSTEMS, DRAINAGE WAYS AND ADJACENT PROPERTIES. IN THE EVENT THAT PREVENTION MEASURES ARE NOT EFFECTIVE, THE CONTRACTOR SHALL REMOVE ANY DEBRIS, SILT, MUD OR TRASH AND RESTORE THE RIGHT-OF-WAY, OR ADJACENT PROPERTIES TO BE IN CONFORMANCE WITH THE LATEST CITY STANDARDS AND TO THE APPROVAL OF THE CITY.
- 5.5. SODDING ALL DISTURBED LANDSCAPE AREAS NOT SHOWN TO BE LANDSCAPE PLANTS OR MATERIALS.

5.6. REPAIR ANY PAVEMENTS, CURBS OR OTHER EXISTING IMPROVEMENTS REMOVED FOR THE INSTALLATION OF THIS PROJECT NOT SHOWN ON THE PLANS TO CONDITIONS MATCHING THE PREVIOUSLY REMOVED MATERIAL.

5.7. PROTECTION AND/OR RESTORATION OF ALL PROPERTY AND ALL WORK SHALL BE CONFINED WITHIN EASEMENTS, CONSTRUCTION LIMITS AND/OR PROPERTY LINES AS SHOWN ON THE PLANS.

5.8. ALL DAMAGE TO EXISTING UTILITIES, PAVEMENT, FENCES, STRUCTURES AND OTHER FEATURES NOT DESIGNATED FOR REMOVAL. THE CONTRACTOR SHALL REPAIR ALL DAMAGES AT HIS EXPENSE.

5.9. VERIFICATION OF QUANTITIES. ANY/ALL QUANTITIES SHOWN ARE FOR ESTIMATING PURPOSES ONLY.

5.10. OBTAINING ALL PERMITS NECESSARY INCLUDING RIGHT-OF-WAY, HAULING, ECT. PRIOR TO CONSTRUCTION.

5.11. PROVIDING AND MAINTAINING ALL SIGNAGE, BARRICADES, LIGHTING ETC. AS REQUIRED FOR TEMPORARY TRAFFIC CONTROL DURING THE CONSTRUCTION OF THIS PROJECT IN ACCORDANCE WITH THE MUTCD.

5.12. AGREES THAT THEY SHALL BE SOLELY RESPONSIBLE FOR THE SAFETY OF THE CONSTRUCTION WORKERS AND THE PUBLIC. THE CONTRACTOR AGREES TO HOLD THE ENGINEER AND OWNER HARMLESS FOR ANY AND ALL INJURIES, CLAIMS, LOSSES OR DAMAGES RELATED TO THE PROJECT.

6. EXCAVATION FOR UTILITY WORK IN THE PUBLIC STREET RIGHT-OF-WAY REQUIRES A RIGHT-OF-WAY WORK PERMIT FROM THE PUBLIC WORKS DEPARTMENT, IN ADDITION TO OTHER PERMITS.

7. ALL PUBLIC STREET SIDEWALK RAMPS TO BE CONSTRUCTED SHALL COMPLY WITH THE AMERICANS WITH DISABILITIES ACT (ADA) AND AHJ SIDEWALK DETAILS MOST CURRENT APPROVED VERSION.

8. ALL WORK SHALL BE CONFINED WITHIN EASEMENTS, CONSTRUCTION LIMITS AND/OR PROPERTY LINES AS SHOWN ON THE PLANS.

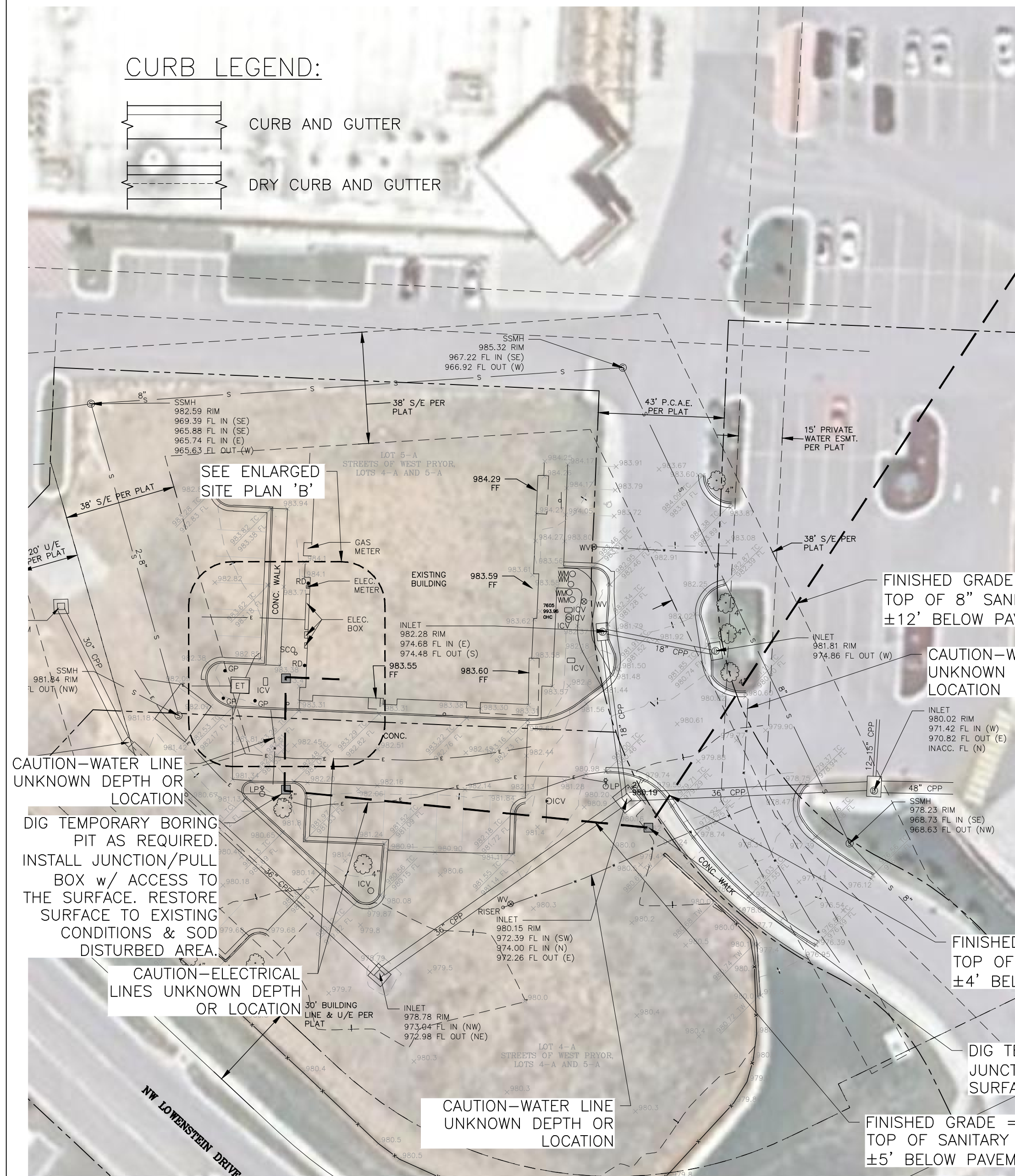
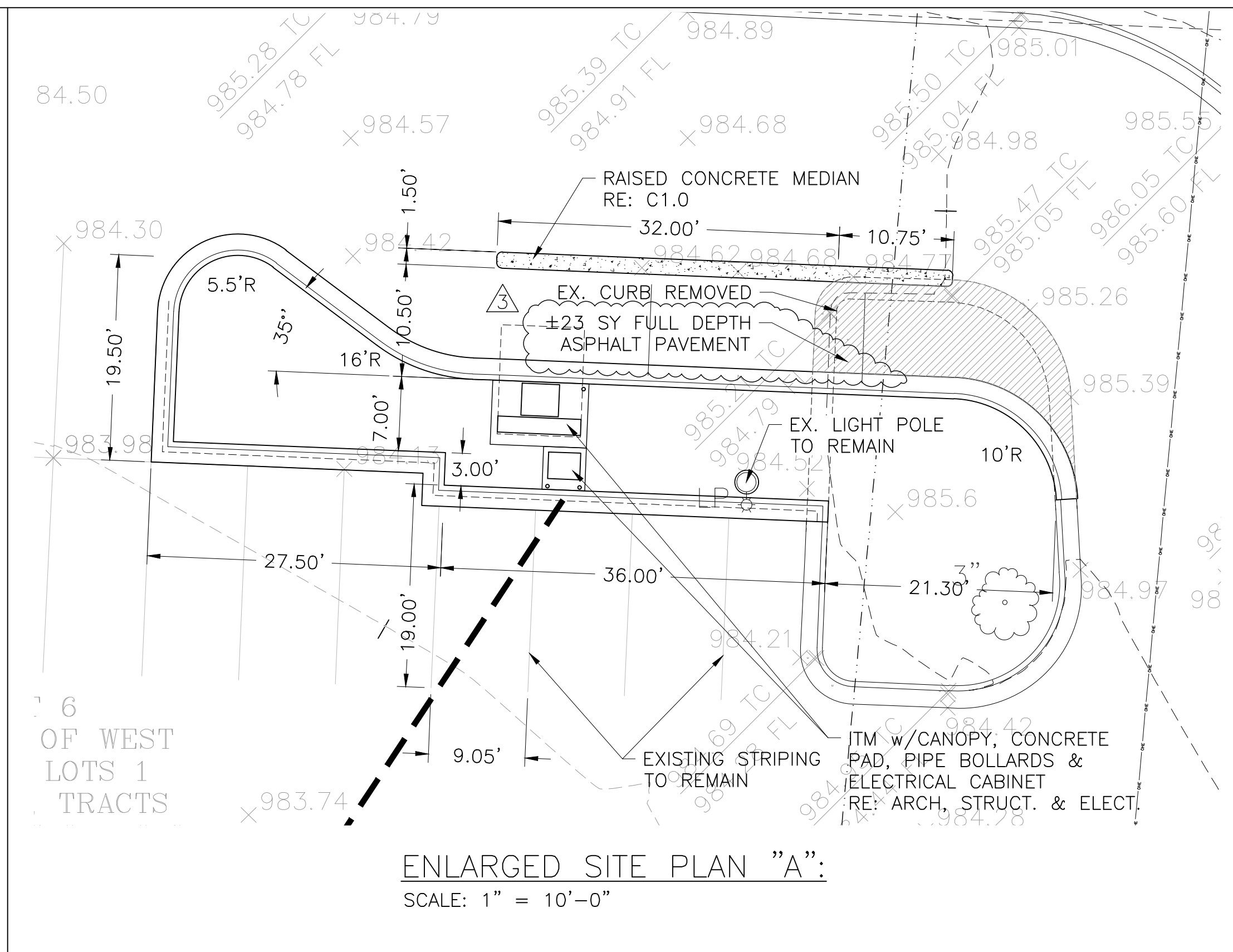
9. ALL PAVEMENT BOUNDING EDGES SHALL BE SAW CUT.

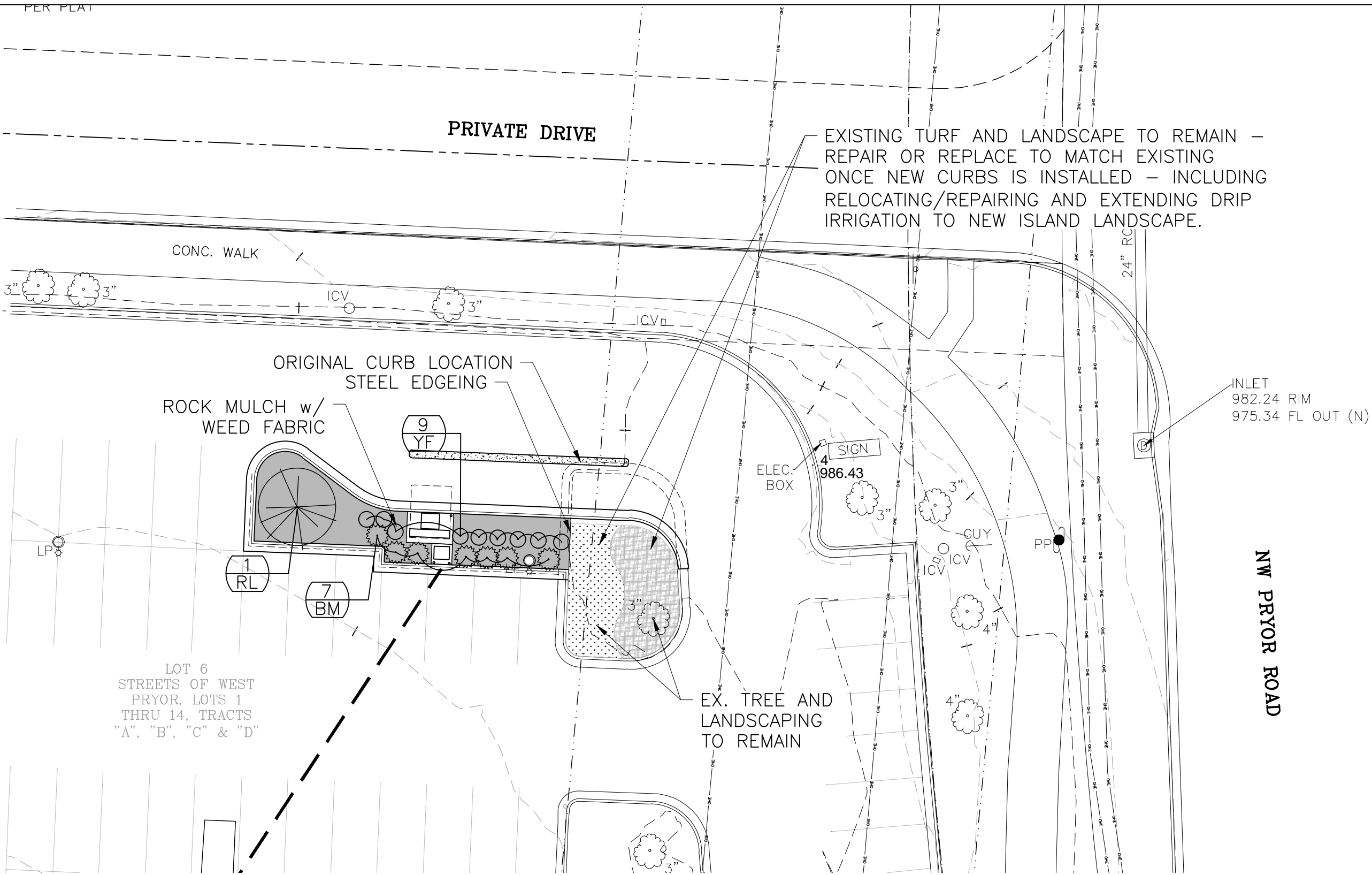
10. THE DEMOLITION OF EXISTING PAVEMENT, CURBS, STRUCTURES AND ALL OTHER FEATURES NECESSARY TO CONSTRUCT THE PROPOSED IMPROVEMENTS SHALL BE PERFORMED BY THE CONTRACTOR. ALL WASTE MATERIAL REMOVED DURING CONSTRUCTION SHALL BE DISPOSED OFF THE PROJECT SITE. THE CONTRACTOR SHALL BE RESPONSIBLE FOR ALL PERMITS FOR HAULING AND DISPOSING OF WASTE MATERIAL. THE DISPOSAL OF WASTE MATERIAL SHALL BE IN ACCORDANCE WITH ALL LOCAL, STATE AND FEDERAL REGULATIONS.

11. CLEARING, GRUBBING, AND TREE REMOVAL SHALL BE SUBSIDIARY TO OTHER WORK ITEMS.
12. ALL CONCRETE SHOWN SHALL BE BE KCMMB 4K, A/E MIX DESIGN. INFORMATION REGARDING KCMMB APPROVED MIX DESIGNS CAN BE FOUND AT WWW.KCMMB.ORG THE CONTRACTOR OR THEIR CONCRETE SUPPLIER SHALL, AT THE CONTRACTORS EXPENSE, SHALL SUBMIT A CONCRETE MIX DESIGN FOR APPROVAL PRIOR TO PLACEMENT OF CONCRETE.

18. ALL DIMENSIONS ARE IN FEET AND ARE TO BACK OF CURB UNLESS NOTED.

19. PATCH ASPHALT AREAS AROUND NEW CURB AS REQUIRED.

[illegible]



LEGEND:

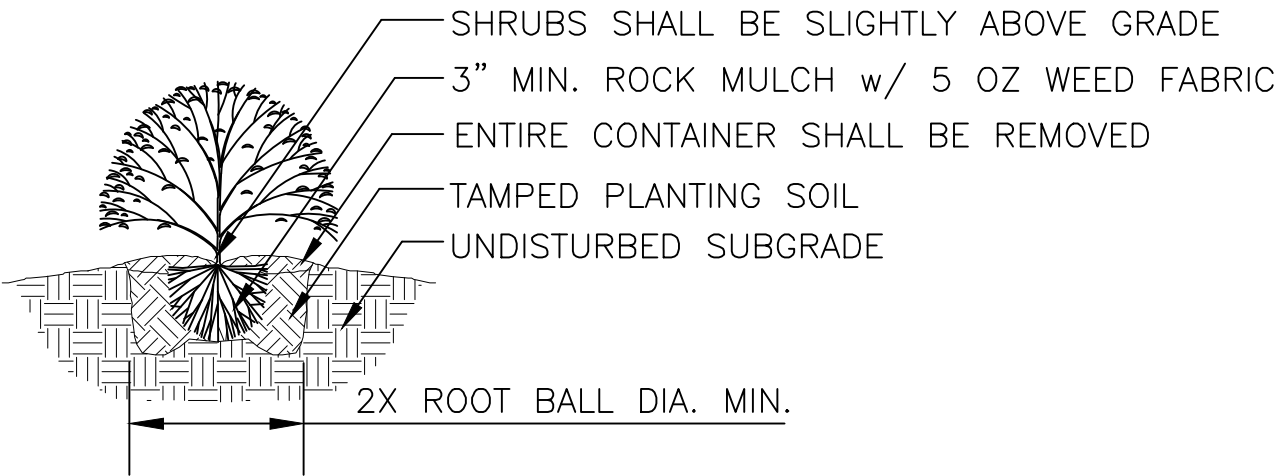
- EX. TURF GRASS
- EX. LANDSCAPE AREA
- ROCK MULCH

PLANT/LANDSCAPE SCHEDULE

QTY.	KEY	Common/Scientific Name	Size
***NO SUBSTITUTIONS OF REQUIRED TREES WILL BE ALLOWED UNLESS APPROVED BY THE OWNER			
TREES			
1	RL	Relocate existing tree being removed or Replace with same variety (Genus/species/cultivar)	2.5" Cal.
SHRUBS/GROUND COVER			
7	BM	Wintergem Boxwood/Buxus microphylla var. japonica 'Wintergem'	5 Gal.
9	YF	Golden sword yucca/Yucca filamentosa 'Golden Sword'	5 Gal.
ROCK MULCH			
±615 SF		Grey-or-Colorado salt & pepper-or-Glacier white granite round cobble stone	2-4"
TURF GRASS			
		Fescue Sod - Sod all disturbed turf areas	

NOTES:

- ALL LANDSCAPE MATERIALS A SHALL CONFORM TO ANY AHJ STANDARDS.
- ALL EXISTING VEGETATION SHALL BE MAINTAINED WHERE IT DOES NOT INTERFERE WITH THE PROPOSED IMPROVEMENTS OR NECESSARY EQUIPMENT OPERATIONS OR INDICATED FOR REMOVAL. EVERY EFFORT SHALL BE MADE TO PROTECT EXISTING VEGETATION AND STRUCTURES FROM DAMAGE.
- CONTRACTOR SHALL AT ALL TIMES PROTECT MATERIALS AND WORK AGAINST INJURY TO WORKERS AND THE PUBLIC.
- THE LANDSCAPE CONTRACTOR IS RESPONSIBLE FOR COORDINATION WITH OTHER SITE RELATED TRADES.
- UNDERGROUND FACILITIES, STRUCTURES AND UTILITIES SHOWN SHALL BE CONSIDERED APPROXIMATE. THERE MAY BE OTHERS NOT SHOWN OR KNOWN. IT IS THE LANDSCAPE CONTRACTORS RESPONSIBILITY TO DETERMINE OR VERIFY THE EXISTENCE AND EXACT LOCATION OF ALL UNDERGROUND ITEMS. CALL 1-800-DIG-RITE.
- IT SHALL BE THE LANDSCAPE CONTRACTORS RESPONSIBILITY TO:
 - VERIFY ALL EXISTING AND PROPOSED FEATURES SHOWN ON THE DRAWINGS PRIOR TO INSTALLATION.
 - REPORT ANY/ALL DISCREPANCIES TO THE OWNER OR LANDSCAPE ARCHITECT IMMEDIATELY FOR REMEDIATION.
 - STAKE, FLAG OR ARRANGE CONTAINERS ON THE SURFACE FOR ALL PLANT LOCATIONS AND OBTAIN APPROVAL FROM THE OWNER OR LANDSCAPE ARCHITECT PRIOR TO INSTALLATION.
- ALL PLANT MATERIAL SHALL BE INSTALLED WITH THE SAME RELATIONSHIP TO GRADE AS GROWN.
- LEAVE TAGS ON REQUIRED PLANT MATERIAL FOR INSPECTION.
- ALL PLANTING BEDS ARE TO BE CULTIVATED TO A DEPTH OF 6" IMMEDIATELY PRIOR TO PLANTING.
- PLAN QUANTITIES TAKE PRECEDENT OVER PLANT SCHEDULE. IT SHALL BE THE LANDSCAPE CONTRACTORS RESPONSIBILITY TO VERIFY ALL QUANTITIES AND CONDITIONS PRIOR TO INSTALLATION.
- NO SUBSTITUTIONS SHALL BE ACCEPTED WITHOUT PRIOR APPROVAL FROM OWNER OR LANDSCAPE ARCHITECT.
- ALL DISTURBED AREAS NOT SHOWN AS PLANT MATERIAL AND ASSOCIATED MULCH ARE TO BE PLANTED WITH FESCUE SOD.
- ALL SHRUB AREAS ABUTTING TURF SHALL HAVE STEEL EDGING.
- ALL SHRUBS AND SHALL HAVE 3" DEEP MULCH.
- ALL TURF AREAS SHALL HAVE MIN. 4" OF TOPSOIL.
- ALL SHRUB AREAS TO HAVE 12" DEEP PLANTING SOIL MIX (PLANTING SOIL MIX = $\frac{1}{3}$ TOPSOIL, $\frac{1}{3}$ COMPOST, $\frac{1}{3}$ SAND MIXTURE).
- ALL PLANT MATERIAL MUST CONFORM TO AMERICAN STANDARD FOR NURSERY STOCK (ANSI Z60.1).
- MODIFY EXISTING IRRIGATION ZONE TO PROVIDE WATER TO NEW SHRUB AREA (DRIP OR BUBBLER PREFERRED - NO SPRAY HEADS)



NOTES:

- MINIMUM ROOT SPREAD TO BE IN ACCORDANCE WITH ANLA STANDARDS
- PRUNE DAMAGED LIMBS OR ROOTS AFTER INSTALLATION
- MAKE SURE ROOTS DO NOT DRY OUT DURING INSTALLATION
- SOAK GENEROUSLY TO COMPACT AND SETTLE

SHRUB PLANTING DETAIL

No Scale

PROFESSIONAL SEAL:

STATE OF MISSOURI

DAVID C. CAMPBELL

LANDSCAPE ARCHITECT

NUMBER LA-3885901724

23 AUG 2024

COMPANY:

UHL ENGINEERING, INC.

7211 W. 98th Terrace, Suite 110

Overland Park, Kansas 66212

(913) 385-2670

www.uhlengineering.com

ACADEMY BANK ITM

STREETS WEST OF PRYOR DEVELOPMENT

LEE'S SUMMIT, MO 64081

OWNER:

DICKINSON FINANCIAL CORPORATION

1111 Main Street #1600

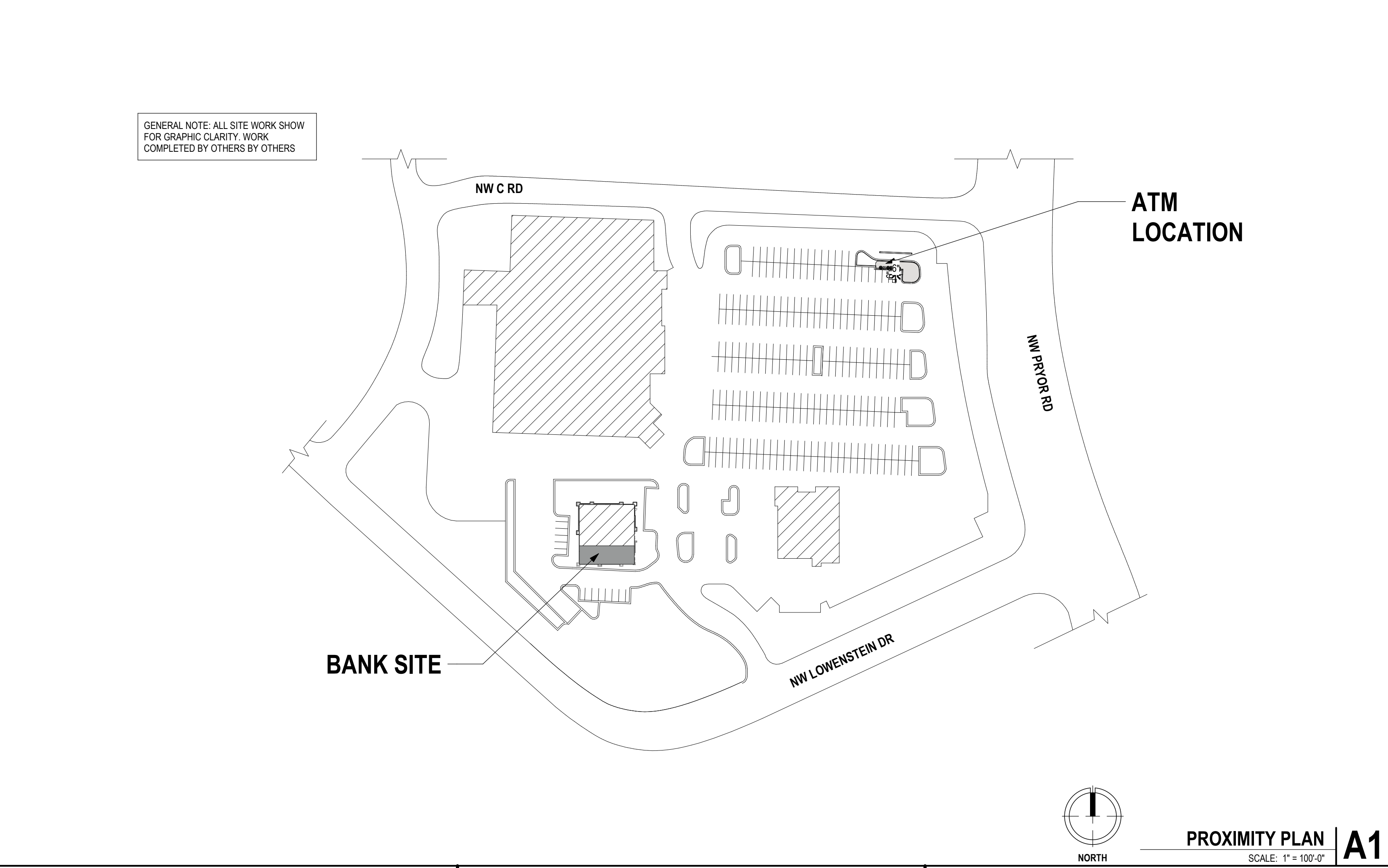
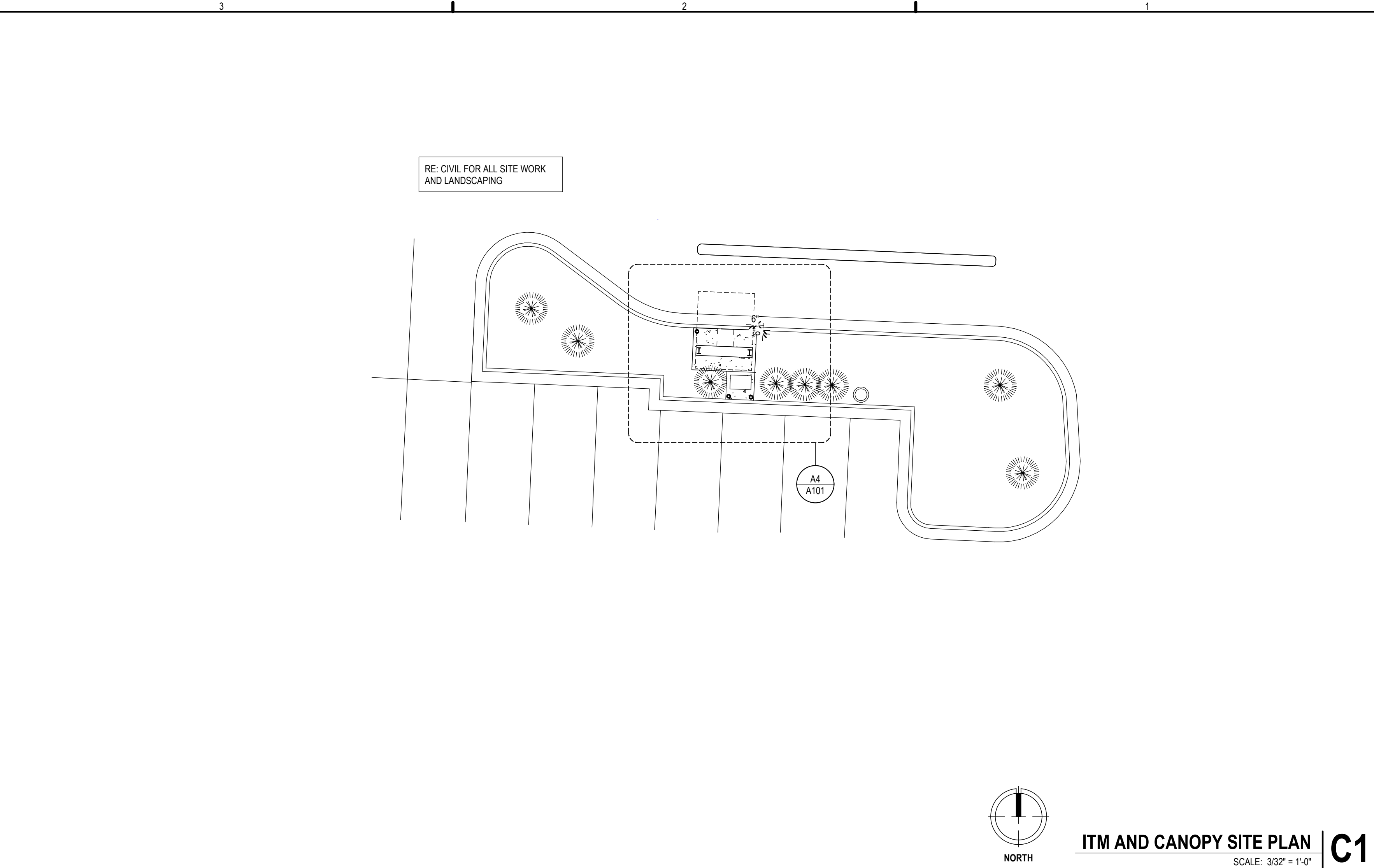
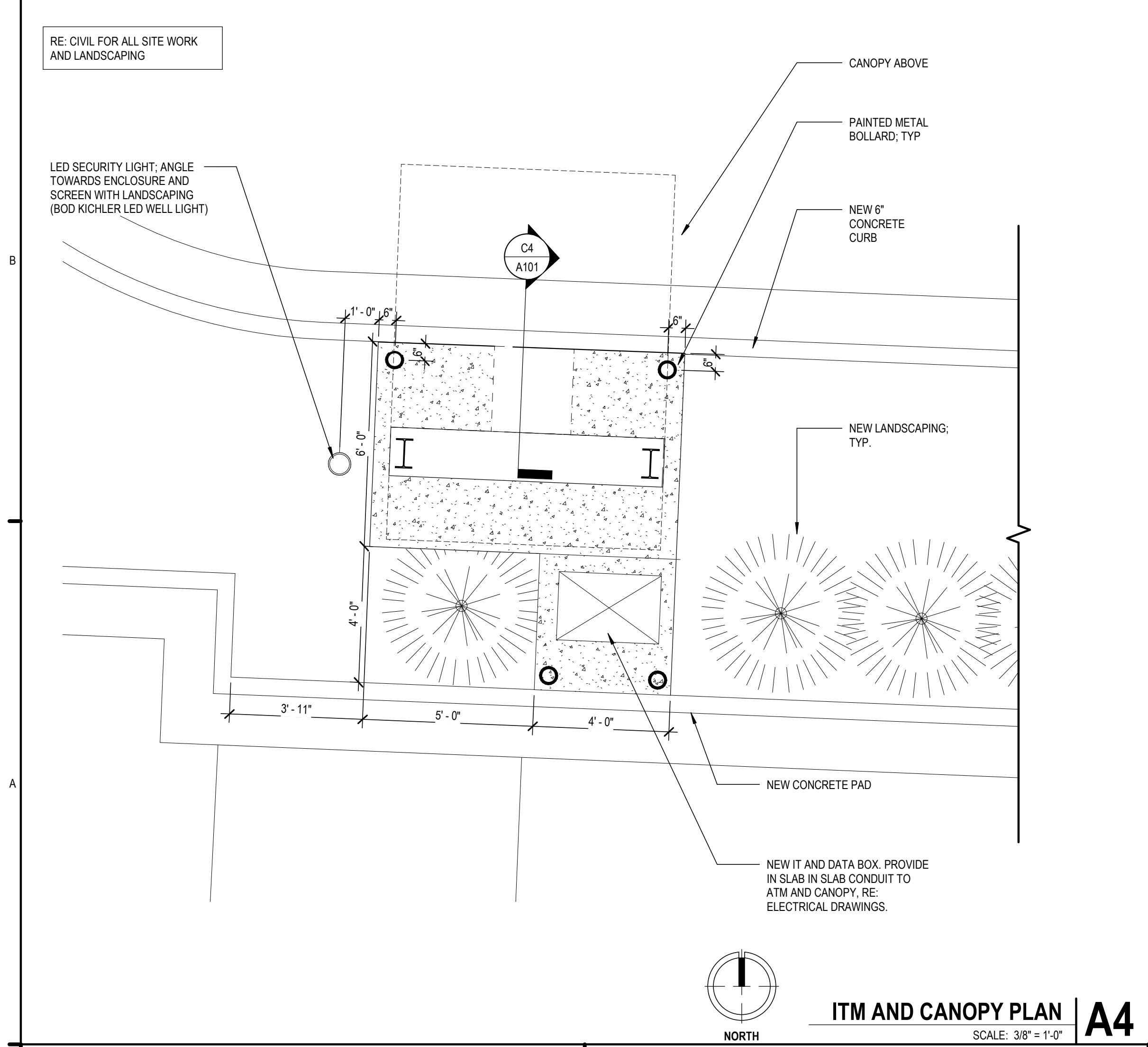
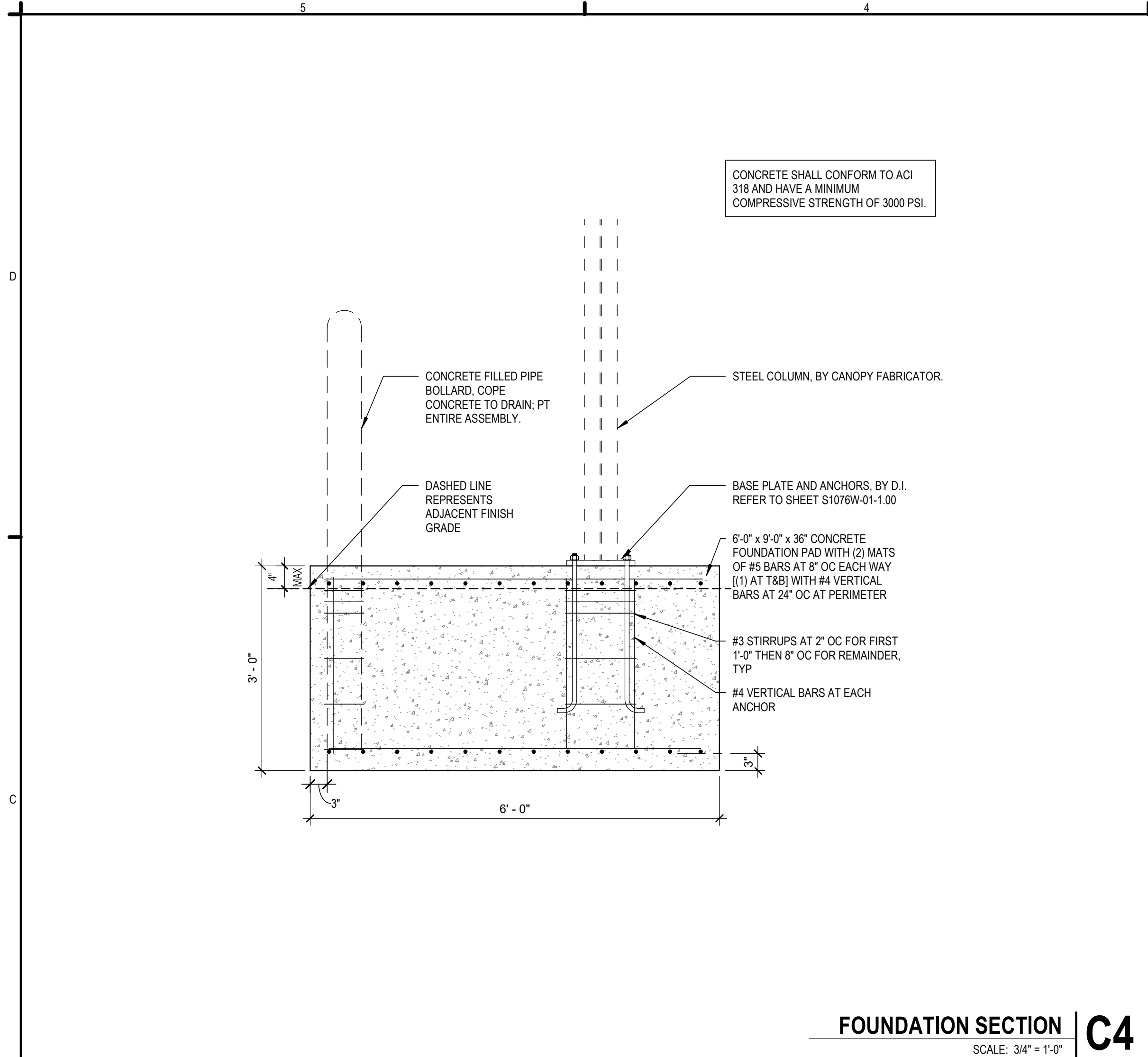
Kansas City, MO 64105

816.472.5422

ISSUE DATE: 24 JUN 2024

SHEET NAME: LANDSCAPE PLAN

SHEET NUMBER: L1.1



OWNER
DICKINSON FINANCIAL CORPORATION
1111 MAIN STREET #1600
KANSAS CITY, MISSOURI 64105
816.472.5244

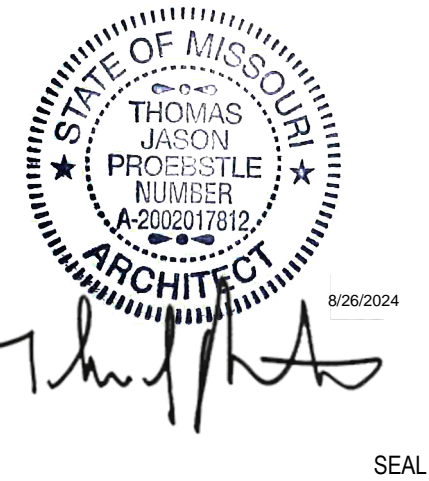
ARCHITECT
GENERATOR STUDIO LLC
1615 BALTIMORE AVE
KANSAS CITY, MO 64108
816.333.6527
GENERATORSTUDIO.COM

CIVIL ENGINEER
UHL ENGINEERING INC
7211 W 98TH TERRACE STE 110
OVERLAND PARK, KS 66212
913.385.2670
UHLENGINEERING.COM

STRUCTURAL ENGINEER
APEX ENGINEERS, INC.
1625 LOCUST ST
KANSAS CITY, MO 64108
816.421.3222
APEX-ENGINEERS.COM

CONTRACTOR
SOUTHWIND GROUP
1218 ENERGY DRIVE
ABILENE, TX 79602
325.695.1111
SOUTHWINDGRP.COM

ARCHITECT: THOMAS JASON PROEBSTLE
LICENSE NO. A-2002017812



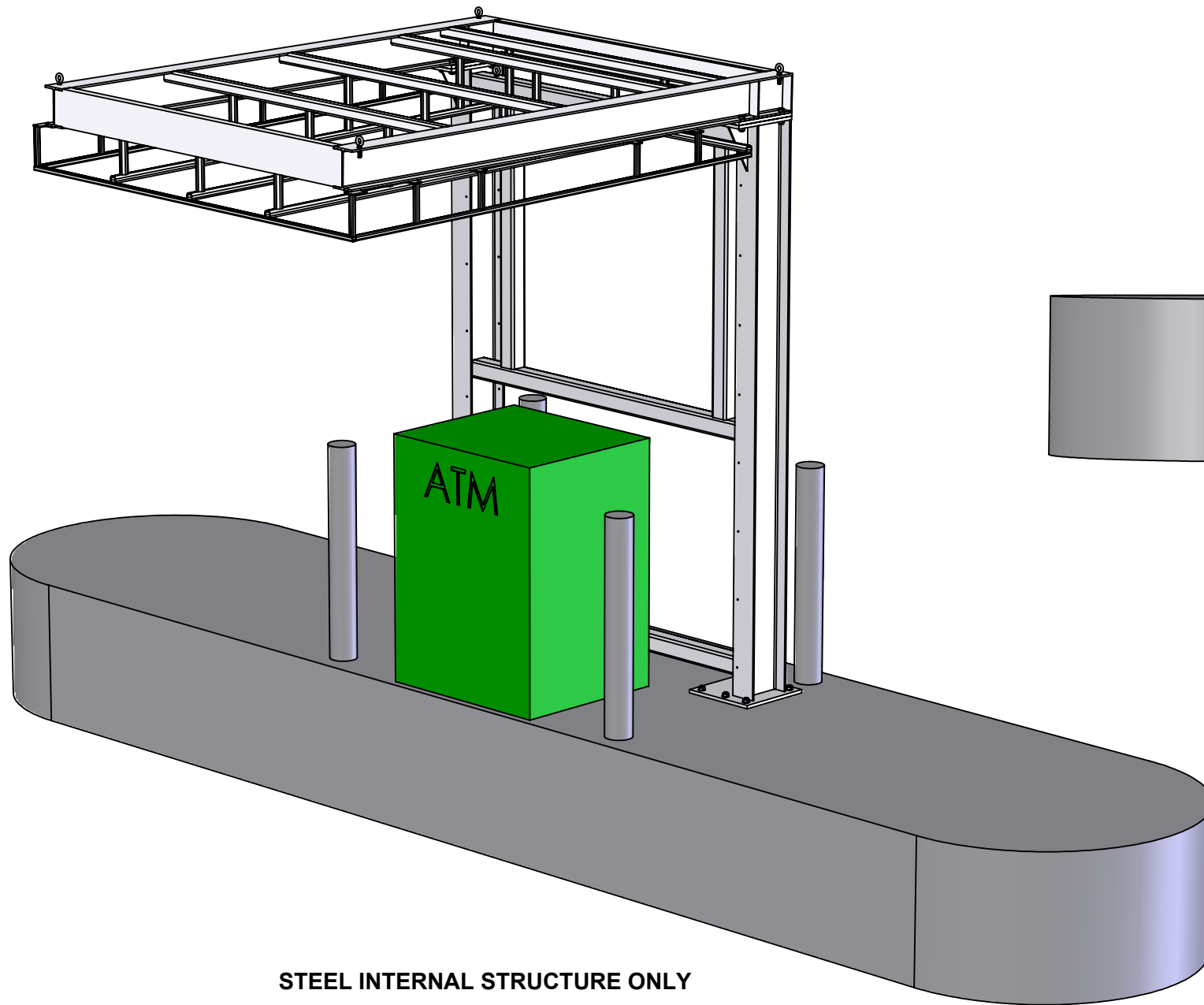
**ACADEMY BANK
LEE'S SUMMIT**

**840 NW PRYOR RD
LEE'S SUMMIT, MO 64081**

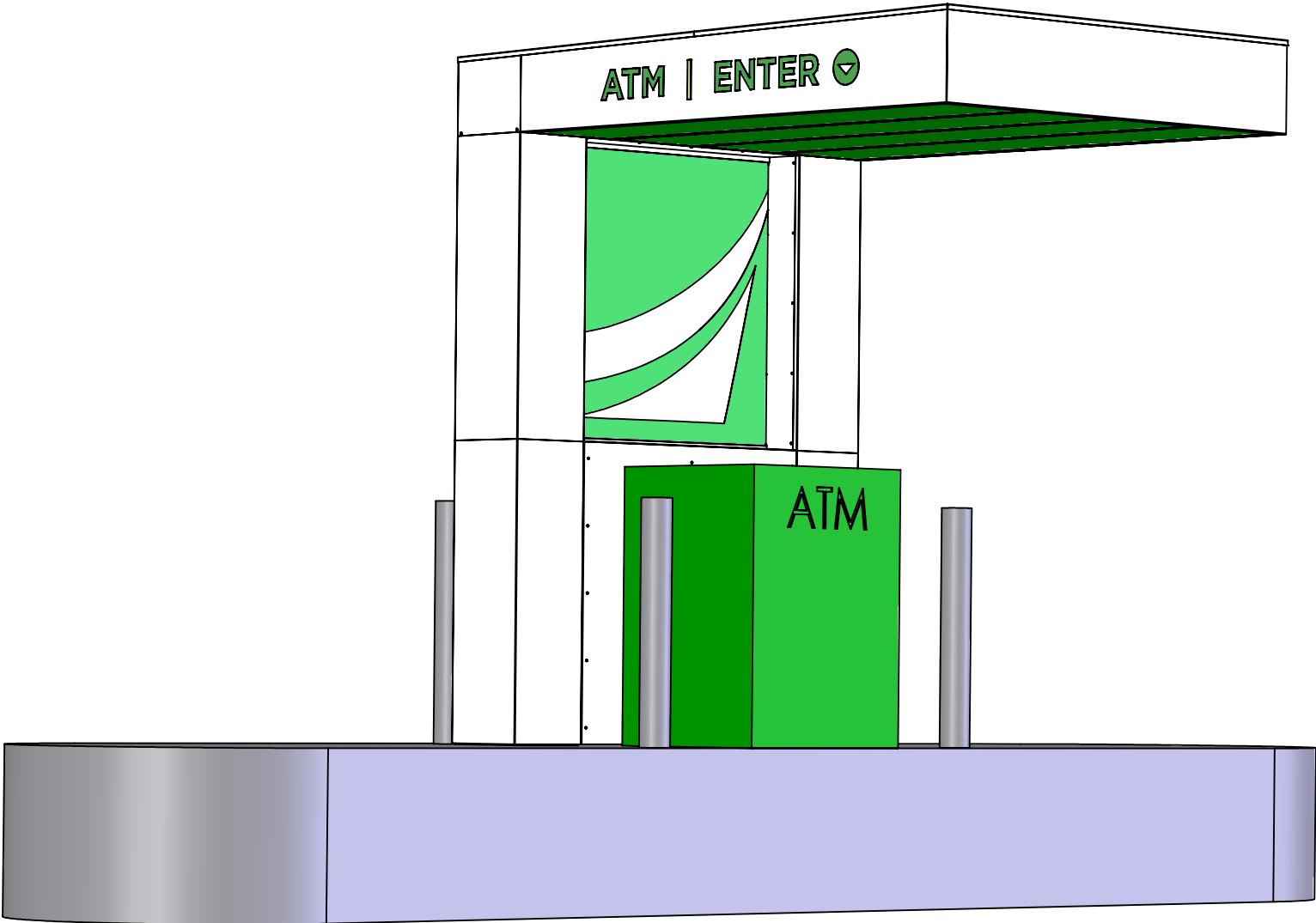
FOR CONSTRUCTION
ISSUE DATE: 07.12.2024
REV DESCRIPTION DATE
2 City Comments #2 8/28/2024

PROJECT NO. 16014
DRAWN BY: CH
CHKD BY: PB
SHEET TITLE



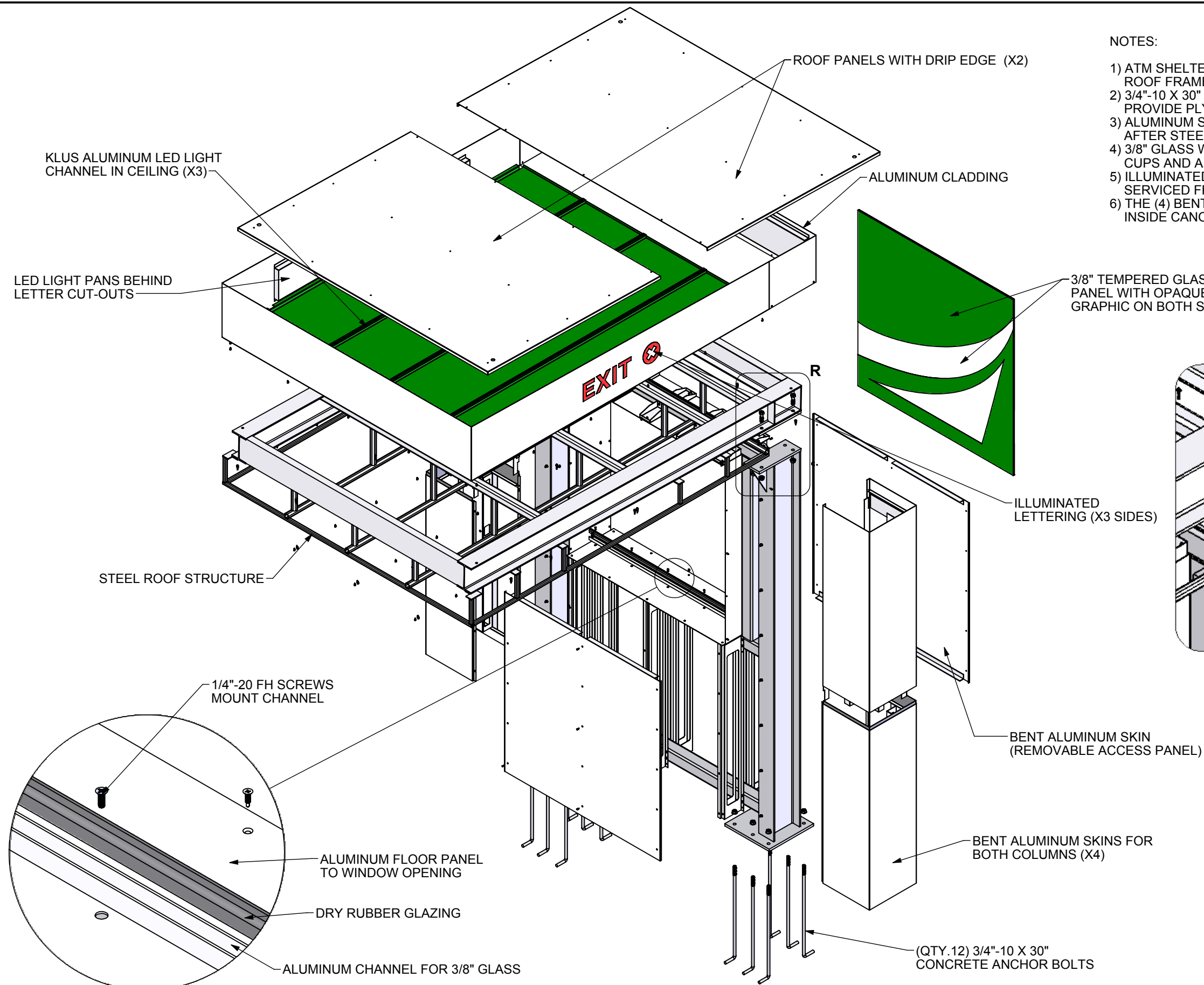


STEEL INTERNAL STRUCTURE ONLY



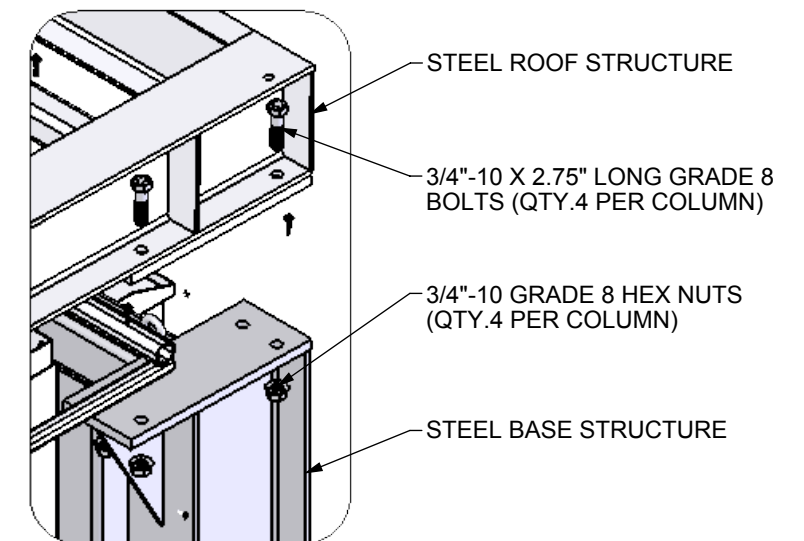
COMPLETE ATM SHELTER

Project Manager: J. WRIGHT	Engineer: E. CLAUDELL	ACADEMY BANK ATM SHELTER	
Creative Director: CLIENT	Project Engineer: B. DIBBEN		
All Dimensions are in inches unless noted. Standard Tolerances unless otherwise noted: Fractional +- 1/32 Decimal +- .015 Angles +- .5 Deg.			
Dimensional Innovations		Material:	
R1435W-01_B			
Scale: 1:28	QTY: 2	Date: 10/4/2018	Sheet: 1 of 7

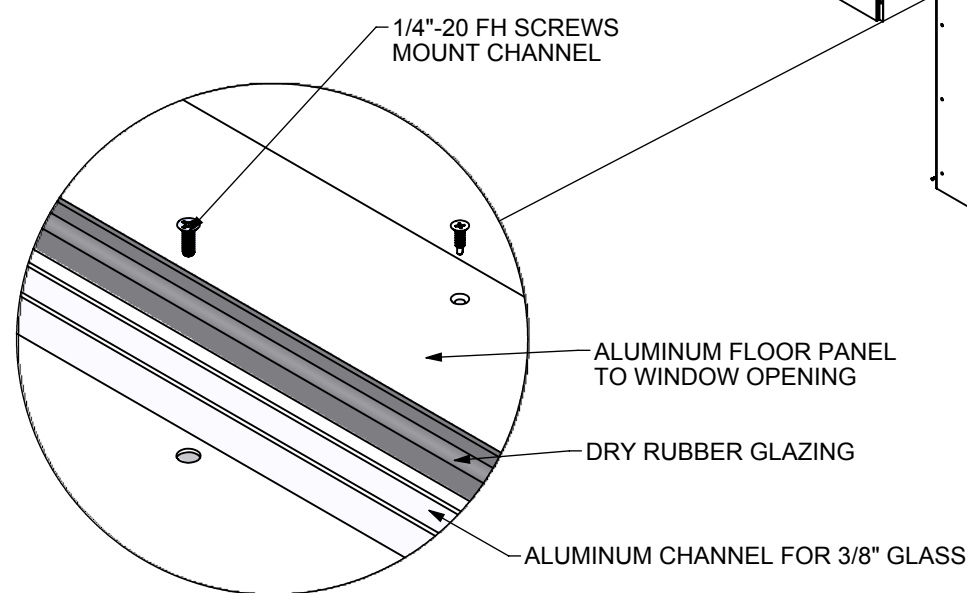


NOTES:

- 1) ATM SHELTER CONSIST OF (2) INTERNAL STEEL FRAME SECTIONS (BASE AND ROOF FRAMES) AND WILL BE BOLTED TOGETHER ON SITE
- 2) 3/4"-10 X 30" CONCRETE ANCHOR BOLTS TO BE INSTALLED BY OTHERS (DI TO PROVIDE PLYWOOD TEMPLATE
- 3) ALUMINUM SKINS AND CEILING PANELS CLAD THE STEEL FRAME SECTIONS AFTER STEEL STRUCTURE IS INSTALLED ON SITE
- 4) 3/8" GLASS WINDOW IN OPENING CAN BE INSTALLED/REMOVED USING SUCTION CUPS AND A "LIFT AND DROP" METHOD
- 5) ILLUMINATED LED LIGHT CHANNELS ARE RECESSED IN CEILING AND CAN BE SERVICED FROM OUTSIDE THE FINISHED STRUCTURE
- 6) THE (4) BENT ALUMINUM CEILING PANELS CAN BE REMOVED FOR ACCESS INSIDE CANOPY



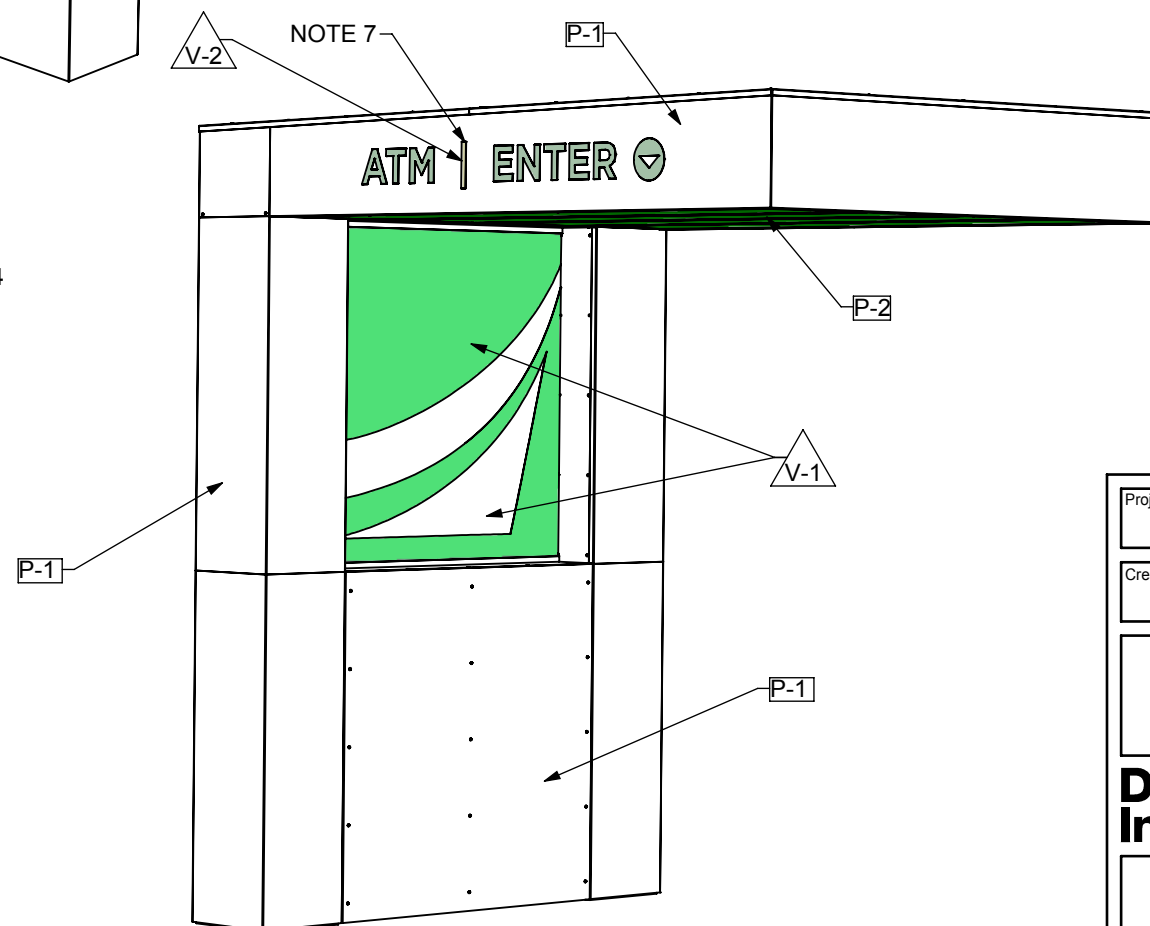
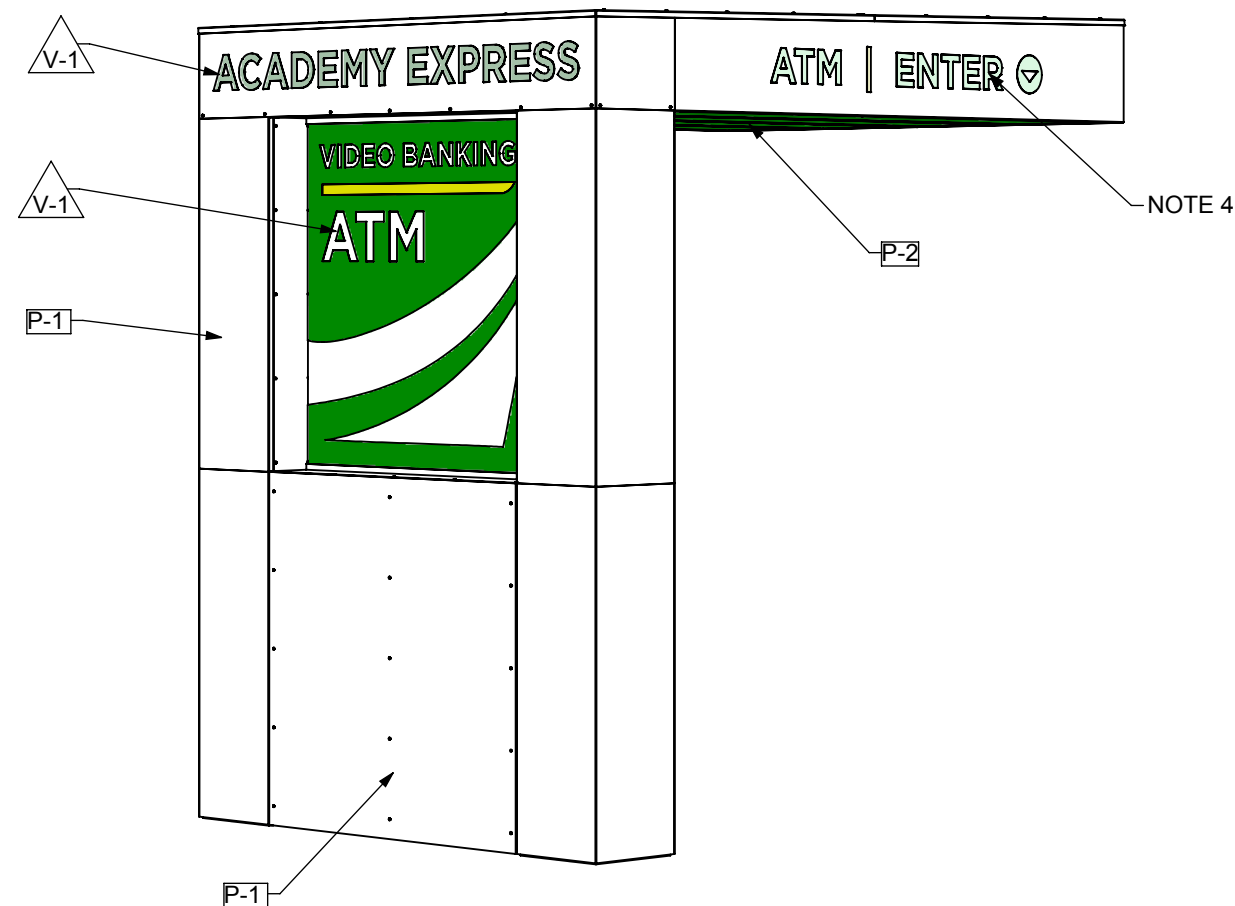
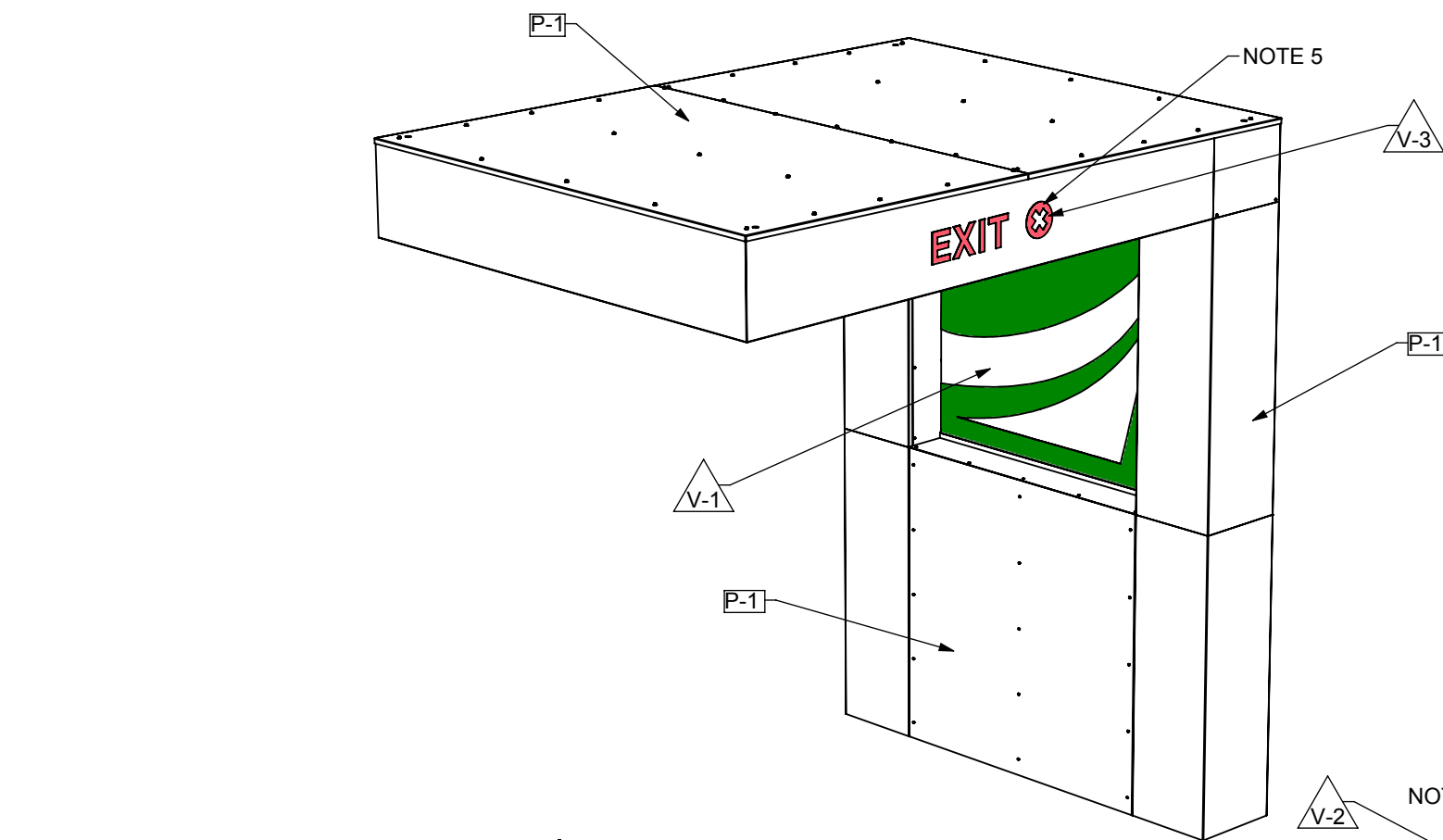
DETAIL R
SCALE 1 : 12



DETAIL AG
SCALE 1 : 4

EXPLODED ISOMETRIC

Project Manager: J. WRIGHT	Engineer: E. CLAUDELL	ACADEMY BANK ATM SHELTER	
Creative Director: CLIENT	Project Engineer: B. DIBBEN		
All Dimensions are in inches unless noted. Standard Tolerances unless otherwise noted: Fractional +- 1/32 Decimal +- .015 Angles +- .5 Deg.			
Dimensional Innovations		Material:	
R1435W-01_B			
Scale: 1:28	QTY: 2	Date: 10/4/2018	Sheet: 2 of 7



FINISH NOTES:

- 1) STEEL STRUCTURE INSIDE TO BE HOT-DIPPED GALVANIZED BEFORE INSTALL
- 2) ALUMINUM SKINS TO BE PAINTED 'SELECT WHITE'
- 3) 3/8" TEMPERED GLASS PANEL TO RECEIVE ERV PAINTED TO MATCH BRAND STANDARD GREEN
- 4) THE (2) SIGNS ON THE CANOPY TO BE BACKED WITH CLEAR PLEX AND SECOND SURFACE GREEN VINYL ILLUMINATED WITH 5000K WHITE LEDS
- 5) THE EXIT SIGN LOGO OF CANOPY SIGN TO BE BACKED WITH RED VINYL
- 6) THE (3) STRIP LIGHTS UNDER CANOPY ARE KLUS# B5554 ALUMINUM LED EXTRUSIONS WITH FROSTED WHITE COVER AND 6000K WHITE LEDS
- 7) THE ENTER SIGN WILL HAVE (2) DIFFERENT GREEN SECTIONS OF VINYL; EXACT COLOR TBD

[P-1] 'SELECT WHITE', CS# 820, ALL OF ALUMINUM BENT RETURNS AND SKINS AND ROOF PANELS

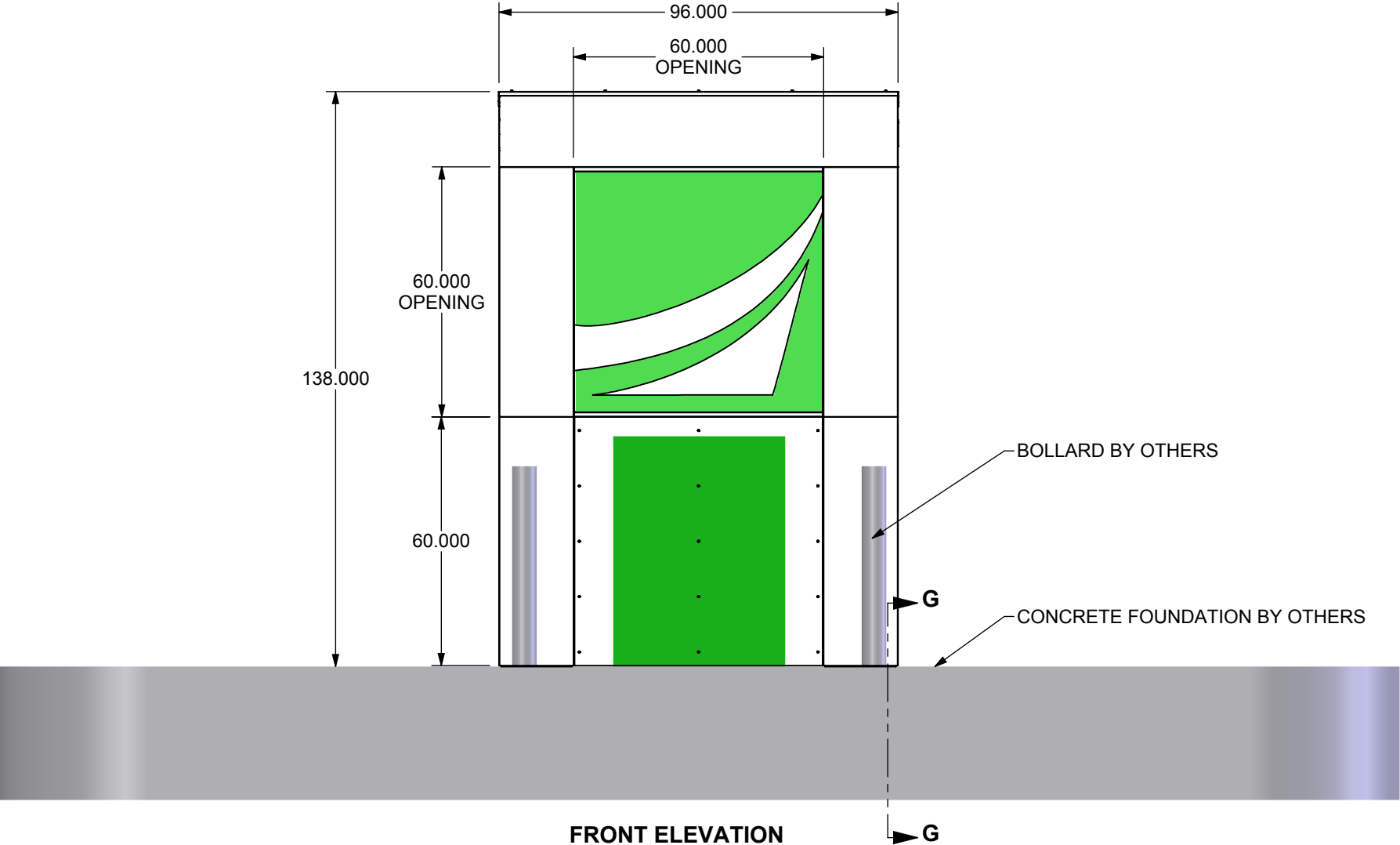
[P-2] 'GREEN', PAINT TO MATCH PMS356C, ALL OF ALUMINUM BENT CEILING PANELS

[V-1] 'BRAND STANDARD GREEN', 3MGERBER ERV PAINTED TO MATCH PMS#356C, FIRST & SURFACE OF WINDOW PANEL; SECOND SURFACE OF ACRYLIC PANELS FOR (2) ILLUMINATED SIGNAGE ON CANOPY

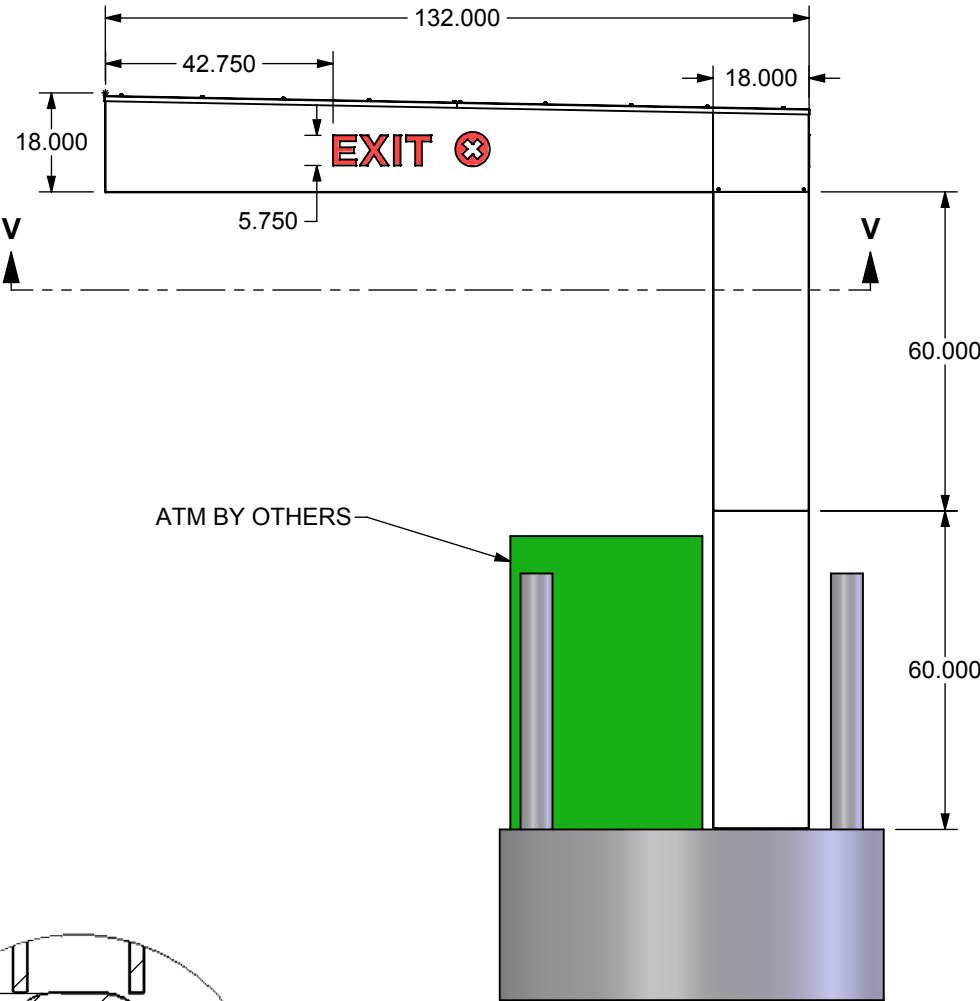
[V-2] 'GREEN', 3MGERBER EXACT COLOR TBD, SECOND SURFACE OF ACRYLIC PANELS FOR "VERTICAL LINE" ON ENTER ILLUMINATED SIGNAGE

[V-3] 'RED', 3MGERBER, SECOND SURFACE OF ACRYLIC PANEL FOR EXIT SIGN

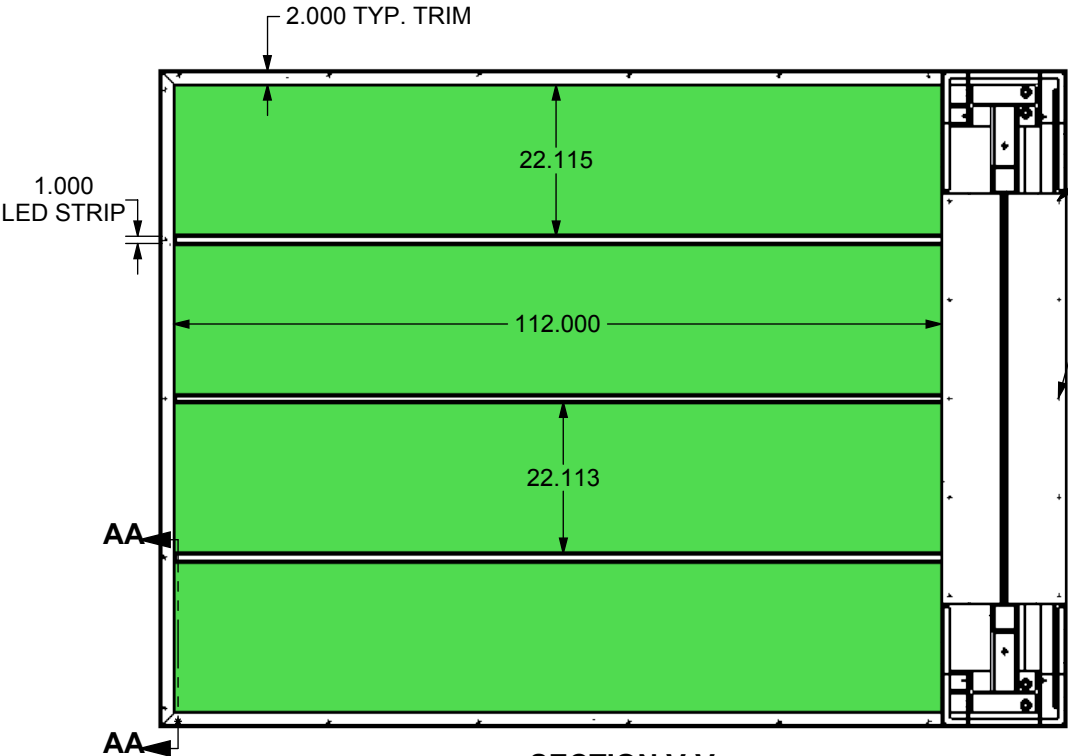
Project Manager: J. WRIGHT	Engineer: E. CLAUDELL	ACADEMY BANK ATM SHELTER	
Creative Director: CLIENT	Project Engineer: B. DIBBEN		
All Dimensions are in inches unless noted. Standard Tolerances unless otherwise noted: Fractional +- 1/32 Decimal +- .015 Angles +- .5 Deg.			
Dimensional Innovations		Material:	
R1435W-01_B			
Scale: 1:28	QTY: 2	Date: 10/4/2018	Sheet: 3 of 7



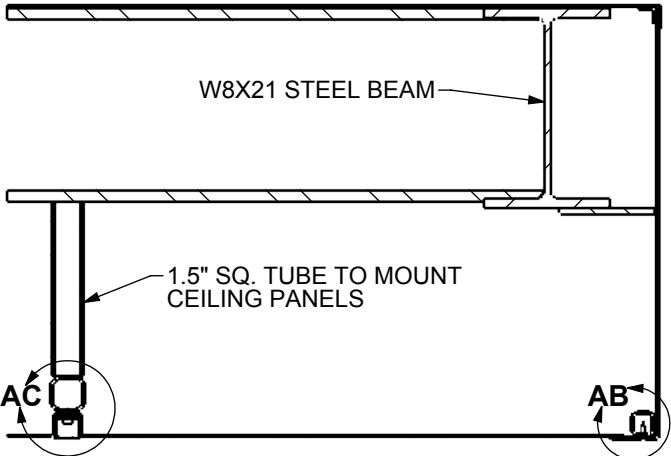
FRONT ELEVATION



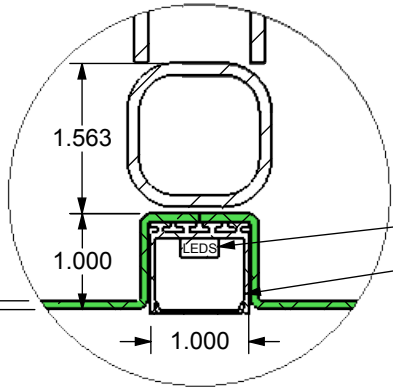
RIGHT SIDE



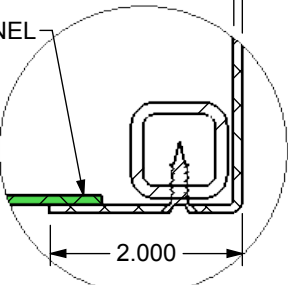
SECTION V-V
SCALE 1 : 28



SECTION AA-AA
SCALE 1 : 8

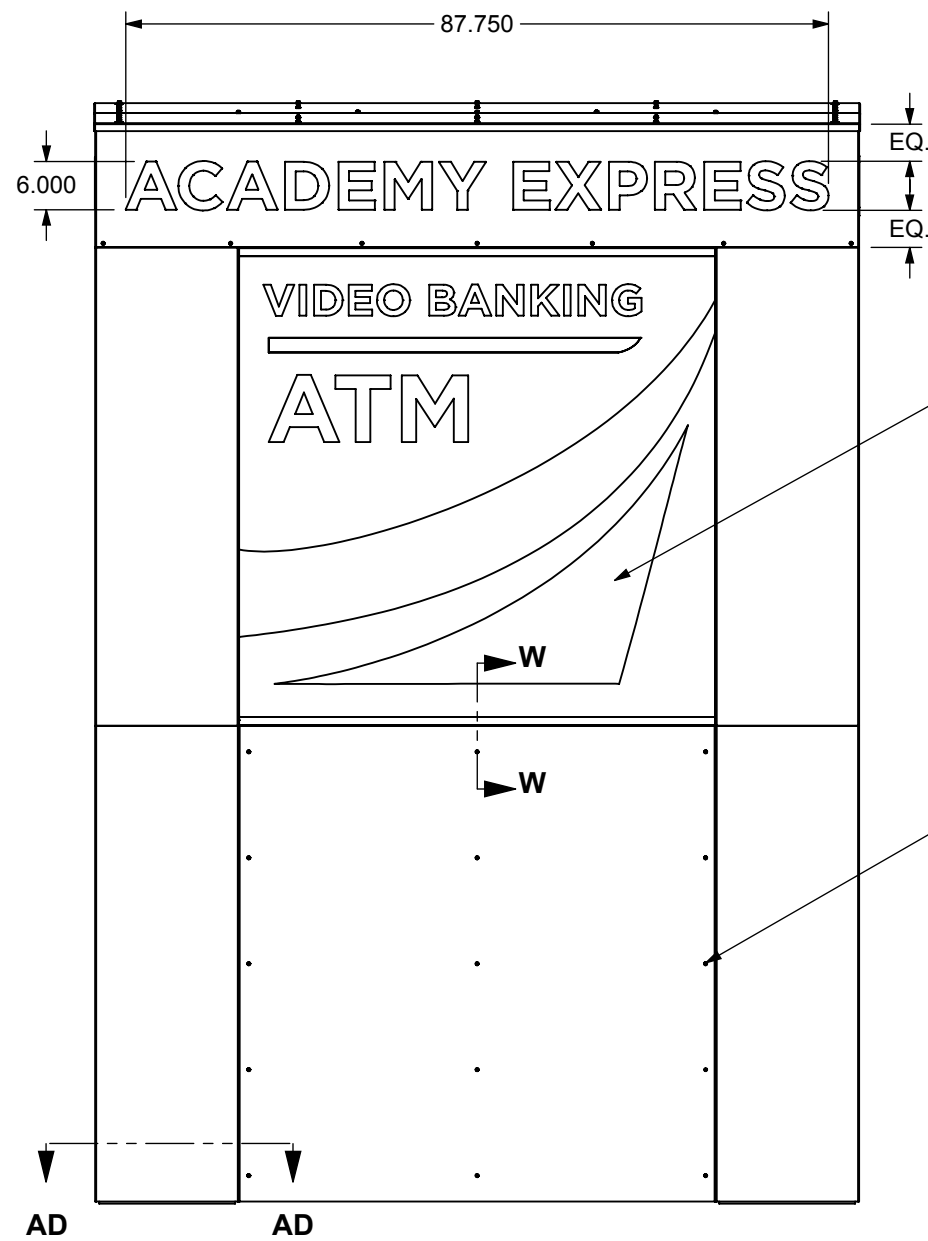


DETAIL AC
SCALE 1 : 2

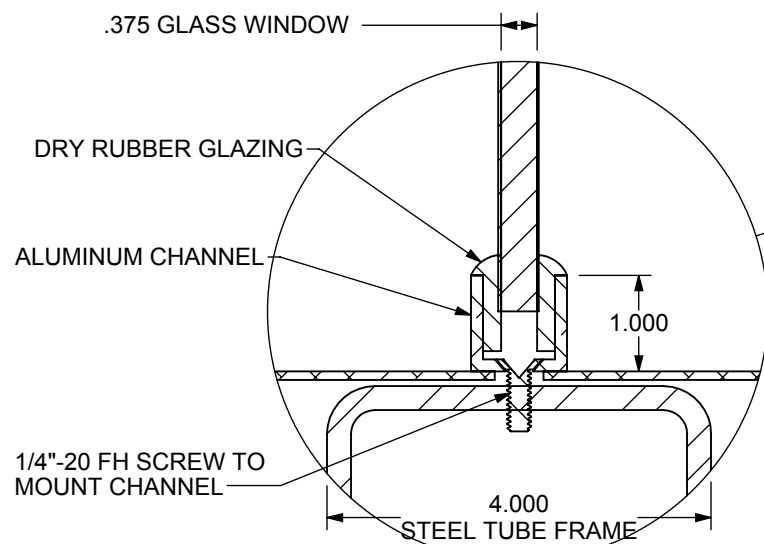


DETAIL AB
SCALE 1 : 2

Project Manager: J. WRIGHT	Engineer: E. CLAUDELL	ACADEMY BANK	
Creative Director: CLIENT	Project Engineer: B. DIBBEN	ATM SHELTER	
All Dimensions are in inches unless noted. Standard Tolerances unless otherwise noted: Fractional +/- 1/32 Decimal +/- .015 Angles +/- .5 Deg.			
Dimensional Innovations		Material:	
R1435W-01_B			
Scale: 1:36	QTY: 2	Date: 10/4/2018	Sheet: 4 of 7



BACK VIEW



DETAIL AE
SCALE 1 : 2

OPAQUE VINYL GRAPHIC
ON BACK OF GLASS

1/4" Ø BOLTS TO ATTACH BENT
ALUMINUM COLUMN SKINS

(QTY. 15) #8 FH SCREWS TO
REMOVE ACCESS PANEL

.090 BENT ALUM. SKINS

3/4" STEEL PLATE

(QTY. 6 PER PLATE) 3/4"-10 X 30"
CONCRETE ANCHOR BOLTS

W10 X 22 STEEL COLUMNS

4.000
STEEL TUBE FRAME

SECTION AD-AD
SCALE 1 : 4

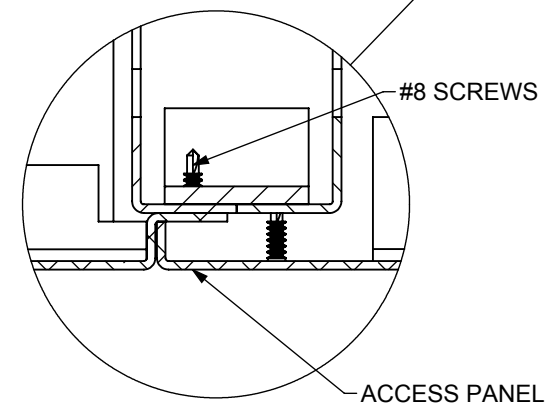
REMOVABLE ALUMINUM ACCESS
PANEL (TYP EACH SIDE)

VINYL ON FIRST AND
SECOND SURFACE OF
GLASS WINDOW

#8 FH SCREWS

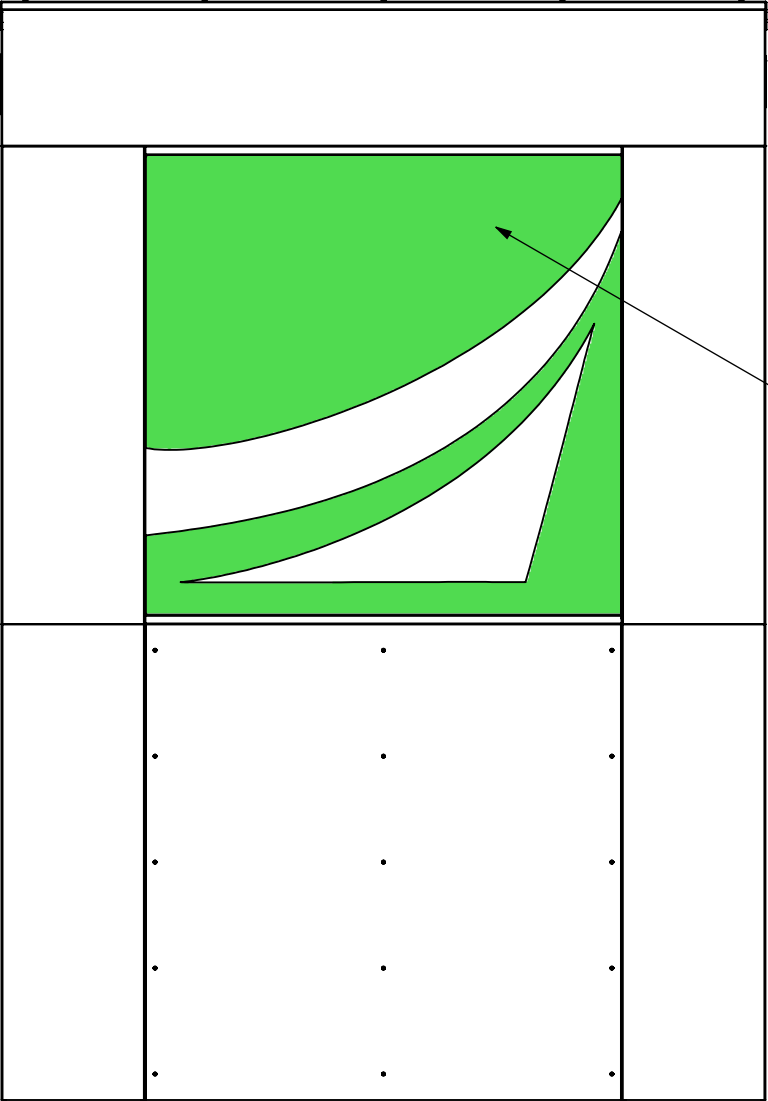
#8 FH SCREWS

SECTION W-W
SCALE 1 : 4



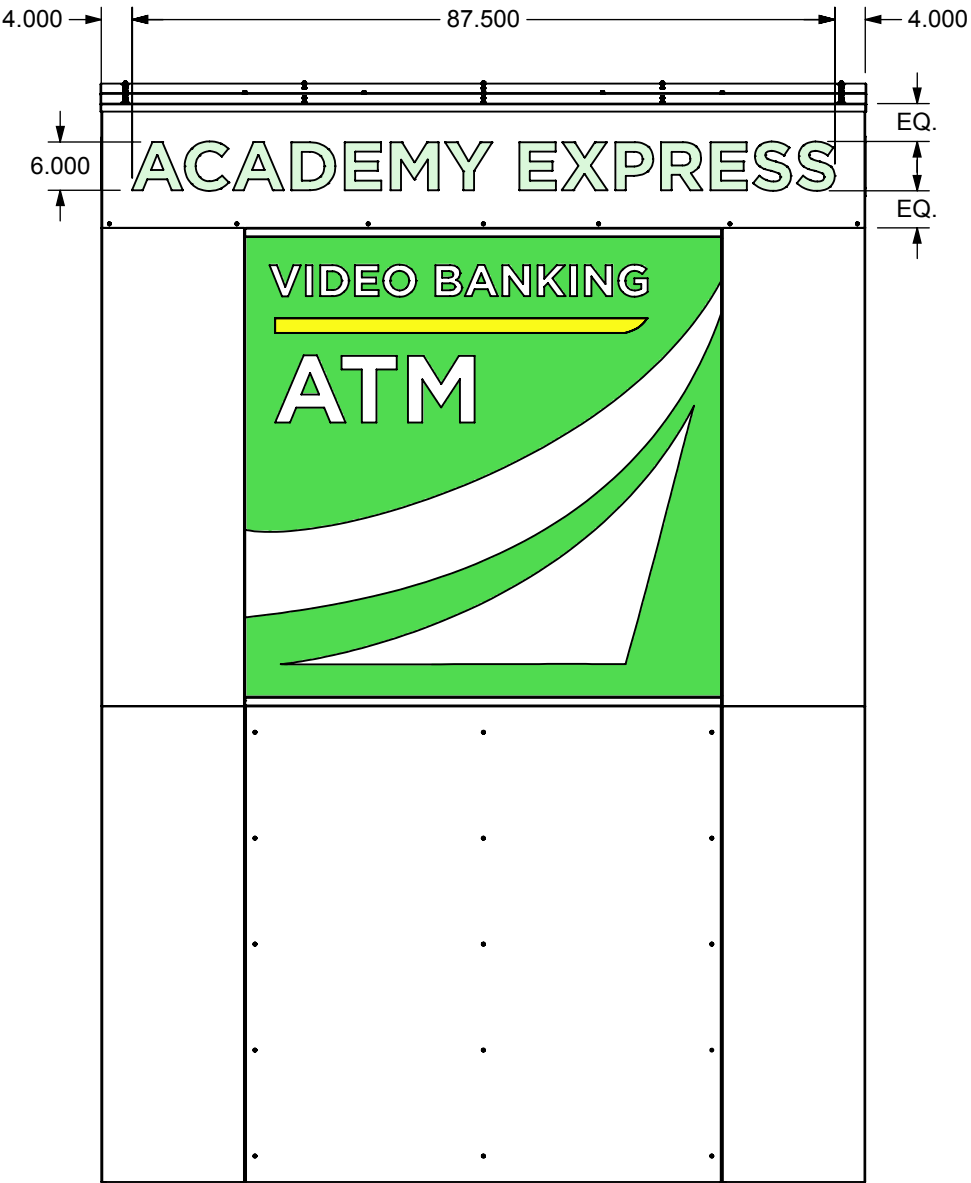
DETAIL AF
SCALE 1 : 2

Project Manager: J. WRIGHT	Engineer: E. CLAUDELL	ACADEMY BANK	
Creative Director: CLIENT	Project Engineer: B. DIBBEN	ATM SHELTER	
All Dimensions are in inches unless noted.			
Standard Tolerances unless otherwise noted: Fractional +- 1/32 Decimal +- .015 Angles +- .5 Deg.			
Dimensional Innovations		Material:	
R1435W-01_B			
Scale: 1:24	QTY: 2	Date: 10/4/2018	Sheet: 5 of 7



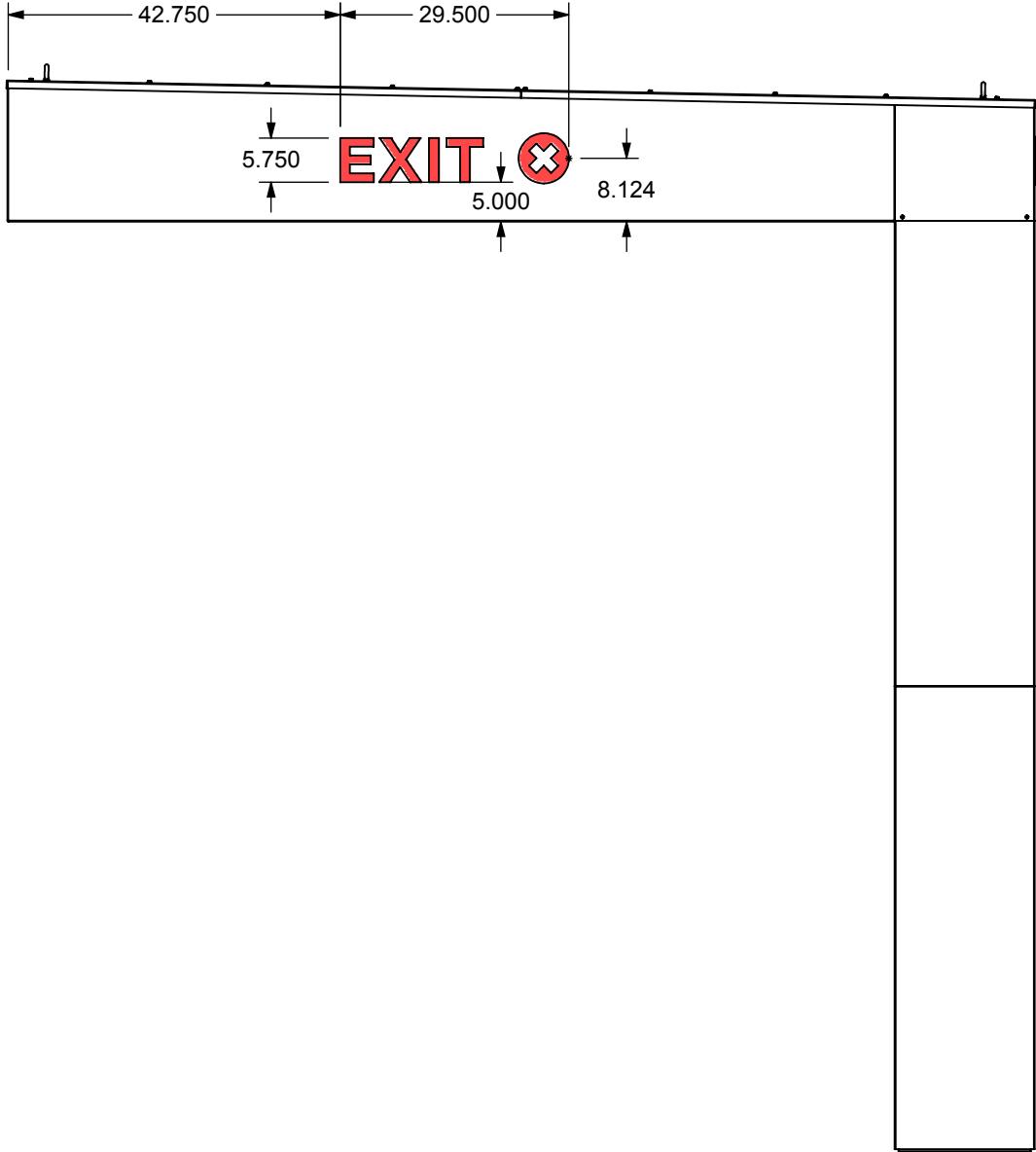
FRONT

NEED PMS# FOR YELLOW STRIPE

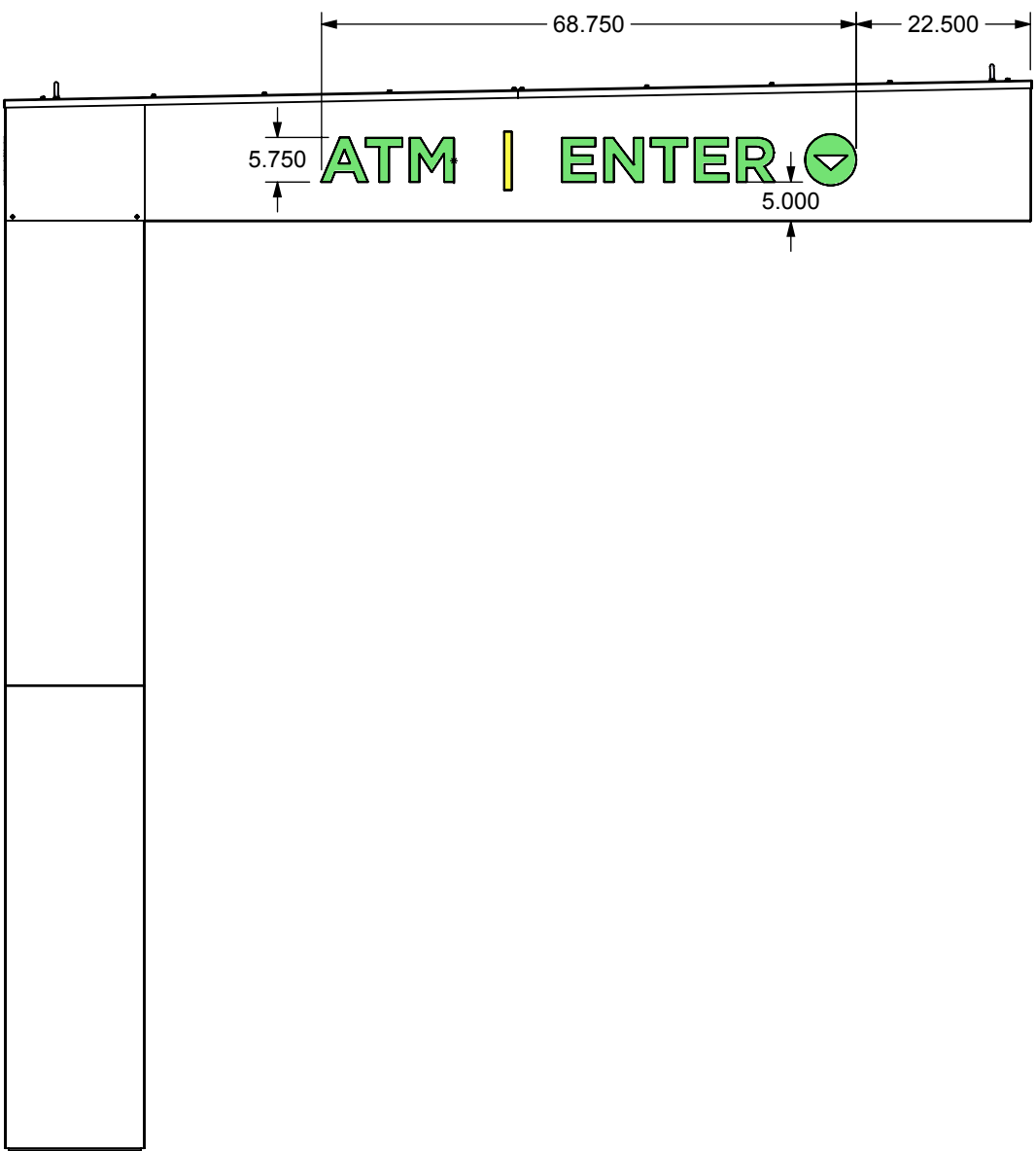


BACK

Project Manager: J. WRIGHT	Engineer: E. CLAUDELL	ACADEMY BANK ATM SHELTER
Creative Director: CLIENT	Project Engineer: B. DIBBEN	
All Dimensions are in inches unless noted. Standard Tolerances unless otherwise noted: Fractional +/- 1/32 Decimal +/- .015 Angles +/- .5 Deg.		
Dimensional Innovations		Material:
R1435W-01_B		
Scale: 1:24	QTY: 2	Date: 10/4/2018
		Sheet: 6 of 7



RIGHT



LEFT

Project Manager: J. WRIGHT	Engineer: E. CLAUDELL	ACADEMY BANK ATM SHELTER	
Creative Director: CLIENT	Project Engineer: B. DIBBEN		
All Dimensions are in inches unless noted. Standard Tolerances unless otherwise noted: Fractional +/- 1/32 Decimal +/- .015 Angles +/- .5 Deg.			
Dimensional Innovations		Material:	
R1435W-01_B			
Scale: 1:24	QTY: 2	Date: 10/4/2018	Sheet: 7 of 7