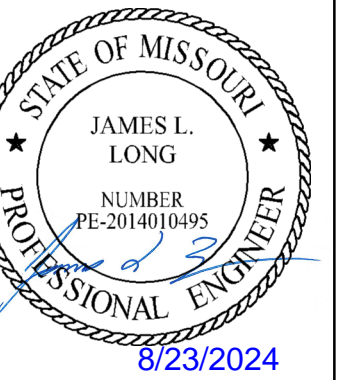


PREPARED BY:



SCHLAGEL & ASSOCIATES, P.A.

Revision 8/23/24

27

RELEASED FOR CONSTRUCTION
 As Noted on Plan Review
 Development Services Department
 Lee's Summit, Missouri
 08/29/2024

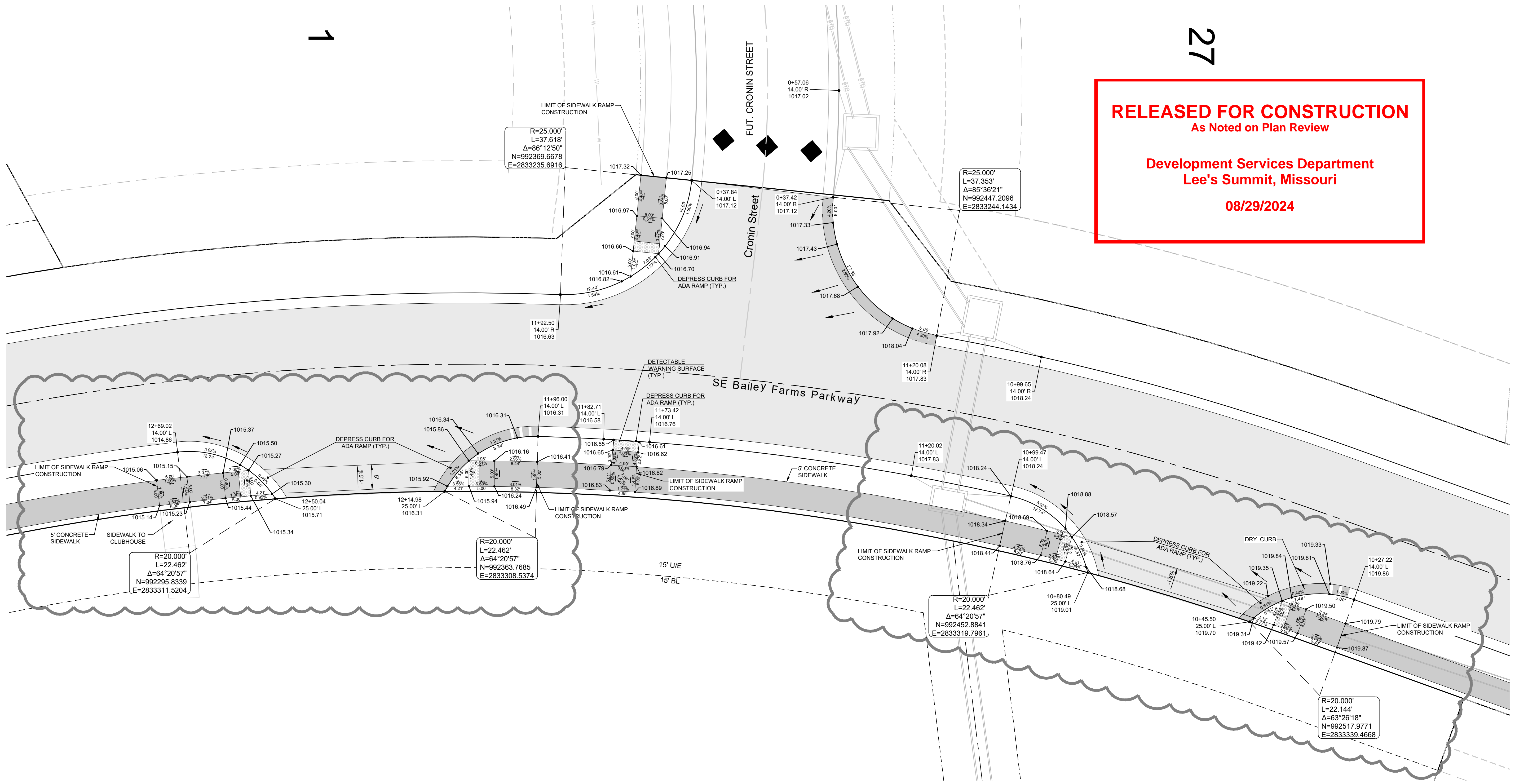
MANOR AT BAILEY FARMS, FIRST PLAT
 STREET, STORMWATER, AND MASTER
 DRAINAGE PLAN
 SE BAILEY ROAD AND SE RANSON ROAD
 LEE'S SUMMIT, MISSOURI

REVISION DATE	DESCRIPTION
01/21/2022	City Comments dated 12/19/2021
04/20/2022	City Comments dated 02/14/2022
05/17/2022	City Comments dated 5/11/2022
10/27/2022	Revised Details to current 2023 Details
11/09/2023	Added "New City Requirements" note
2/28/2024	Storm 102, 105 to HDPE and
8/23/2024	Revised Amenity Tract Curb Returns

INTERSECTION
 DETAILS 6 OF 8

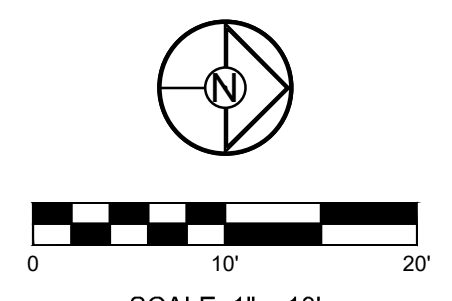
SHEET

23



CURB LEGEND

	CURB & GUTTER - EXISTING
	TYPE "CG-2" CURB & GUTTER
	TYPE "CG-2" DRY CURB & GUTTER
	TRANSITION "CG-2" TO "CG-2 DRY"



I:\PROJECTS\2021\21-130\3.0 Design\3.0 DWG Plans\6.0 SS\21-130-SS-INT.dwg, INTERSECTION DETAILS 6 OF 8, 1:1