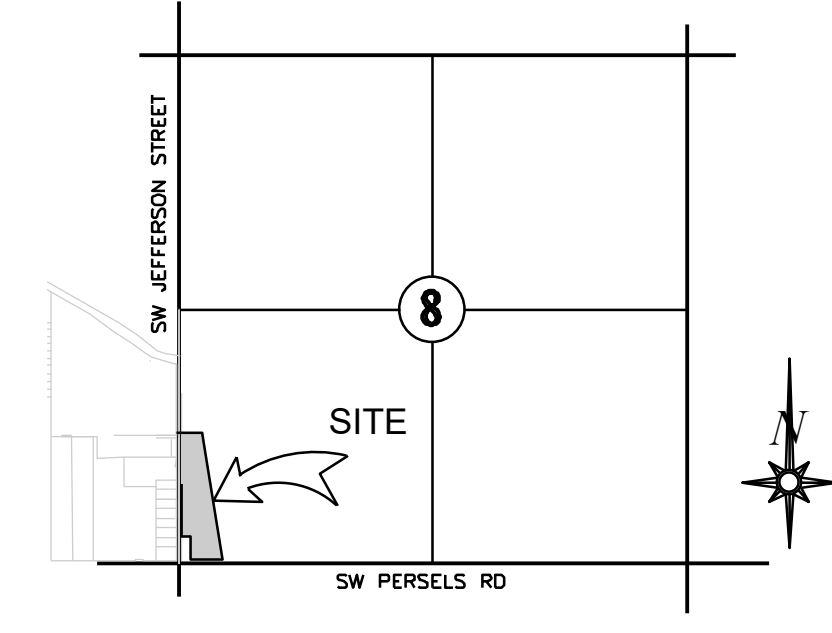


Preliminary Plat

Oldham Village

Lots 14 - 18

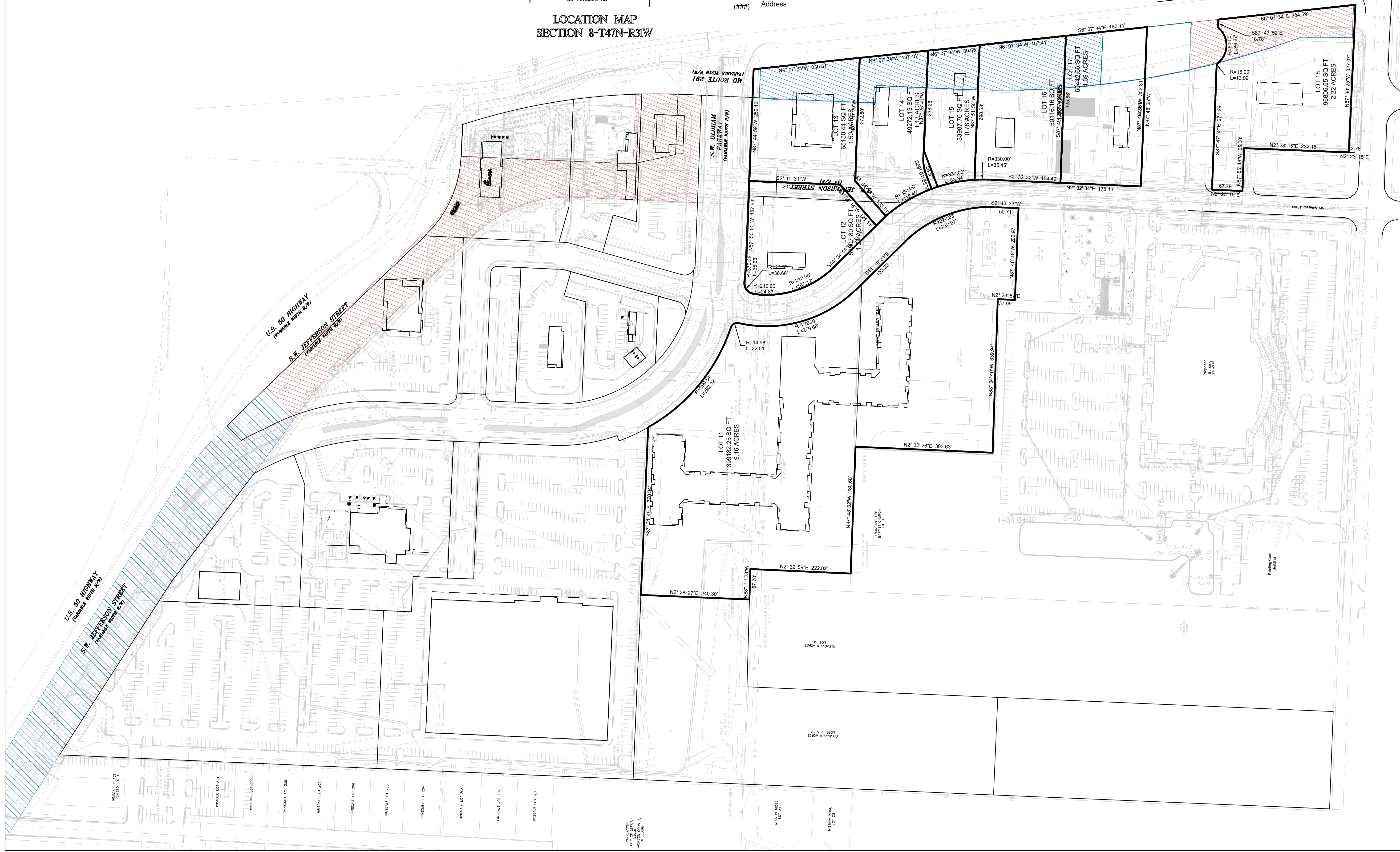
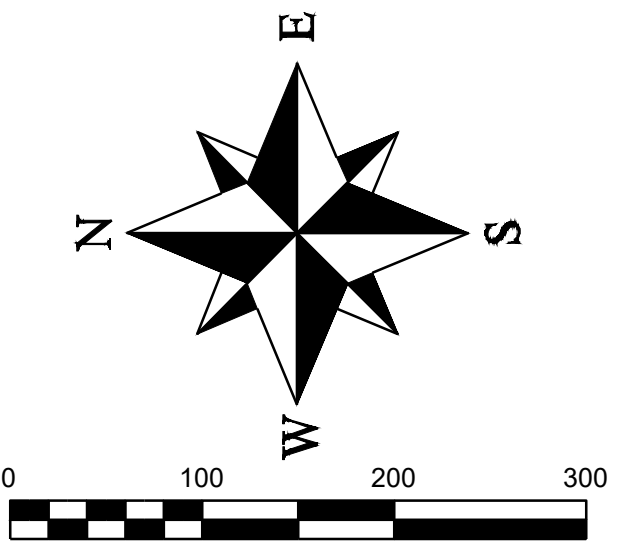
Section 7, Township 47, Range 31
Lee's Summit, Jackson County, Missouri



LOCATION MAP
SECTION 8-T47N-R31W

LEGEND

- These standard symbols will be found in the drawing.
- ⊙ Found Survey Monument (As Noted)
 - ⊕ Set 3/4" Bar and Cap (2005008319-D)
 - Ⓜ State Plane Coordinate Identification
 - U.E. Utility Easement
 - S.E. Sanitary Sewer Easement
 - P.C.A.E. Public Common Area Easement
 - BL Building Line
 - (###) Address



REVISIONS
DATE

Preliminary Plat
Oldham Village, Lots 1 - 11A & Tract A
Lee's Summit, Jackson County, Missouri

Preliminary Plat

SHEET	SECTION	TOWNSHIP	RANGE	COUNTY	JOB NO.
1	7	47	31	Jackson	040824
DRAWN BY					DATE OF PREPARATION
M. Schlicht, PLS., PE					August 13, 2024
SCALE					1" = 100'



ENGINEERING SOLUTIONS
ENGINEERING & SURVEYING
50 SE 30TH STREET
LEE'S SUMMIT, MO 64082
P: (816) 623-9888 F: (816) 623-9849