

ACADEMY BANK LEE'S SUMMIT DRIVE THRU ATM

840 NW PRYOR RD
LEE'S SUMMIT, MO 64081

<u>REV</u>	<u>DESCRIPTION</u>	<u>DATE</u>	<u>TENANT:</u> DICKINSON FINANCIAL CORPORATION 1201 WALNUT STREET KANSAS CITY, MISSOURI 64108 816.472.5244	<u>ARCHITECT:</u> GENERATOR STUDIO 1615 BALTIMORE AVE KANSAS CITY, MO 64108 816.333.6527 GENERATORSTUDIO.COM	<u>CIVIL ENGINEER:</u> UHL ENGINEERING INC 7211 W 98TH TERRACE SSTE 110 OVERLAND PARK, KS 66212 913.385.2670	<u>STRUCTURAL ENGINEERS</u> APEX ENGINEERS 1625 LOCUST ST KANSAS CITY, MO 64108 816.421.3222	<u>GENERAL CONTRACTOR</u> SOUTHWIND GROUP 1218 ENERGY DR ABILENE, TX 79602 325.6995.1111
------------	--------------------	-------------	--	---	--	--	--

FOR CONSTRUCTION

07.12.2024

OWNER
DICKINSON FINANCIAL CORPORATION
1111 MARKET STREET #1600
KANSAS CITY, MISSOURI 64105
816.472.5244

ARCHITECT
GENERATOR STUDIO LLC
1615 BALTIMORE AVE
KANSAS CITY, MO 64108
161.333.6527
GENERATORSTUDIO.COM

CIVIL ENGINEER
UHL ENGINEERING INC
7211 W 98TH TERRACE STE 110
OVERLAND PARK, KS 66212
913.385.2670
UHLENGINEERING.COM

STRUCTURAL ENGINEER
APEX ENGINEERS, INC.
1625 LOCUST ST
KANSAS CITY, MO 64108
816.421.3222
APEX-ENGINEERS.COM

CONTRACTOR
SOUTHWINN GROUP
1218 ENERGY DRIVE
ABILENE, TX 79602
325.695.1111
SOUTHWINNGRP.COM

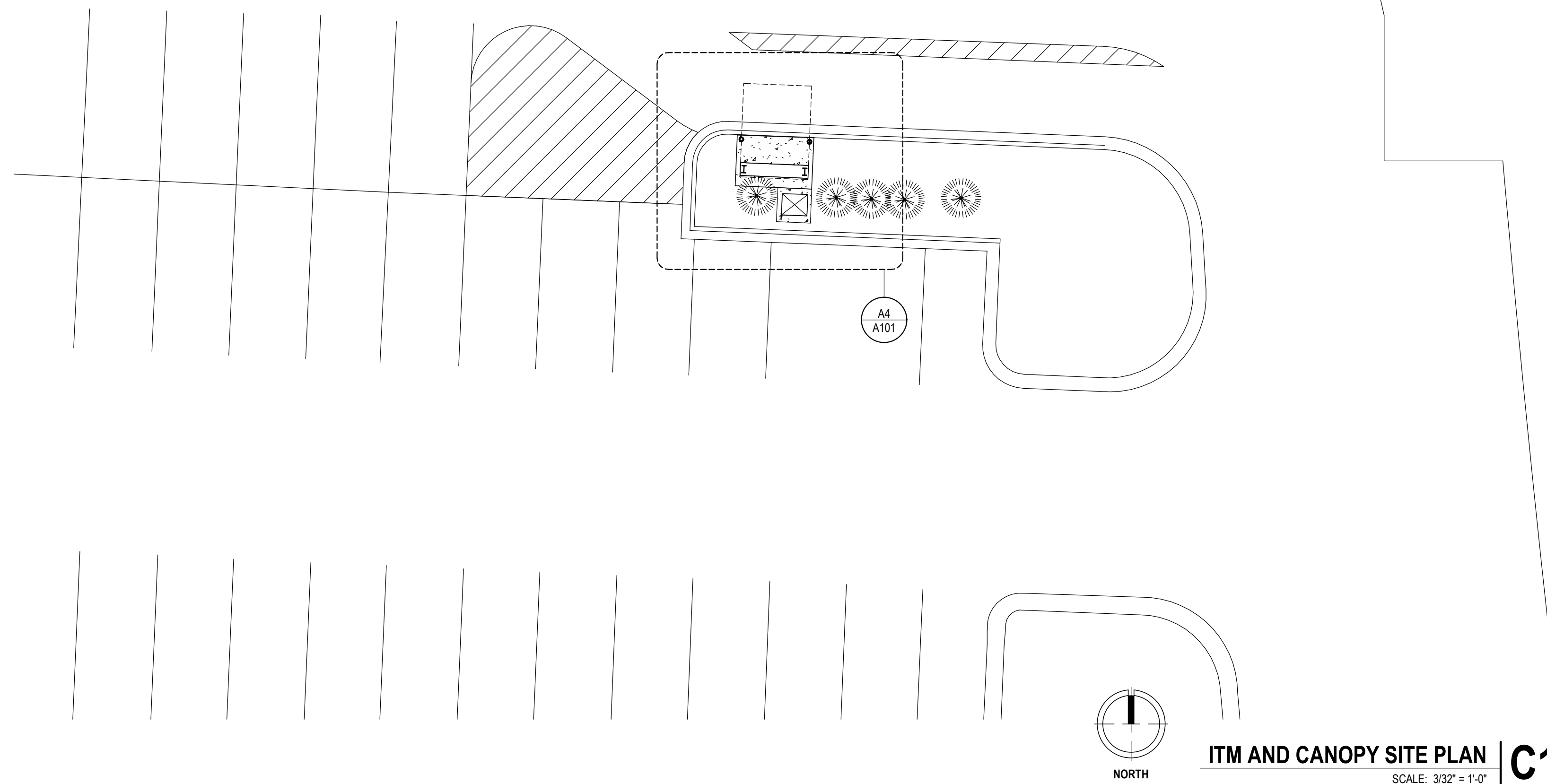

 07/29/2022

 SEAL

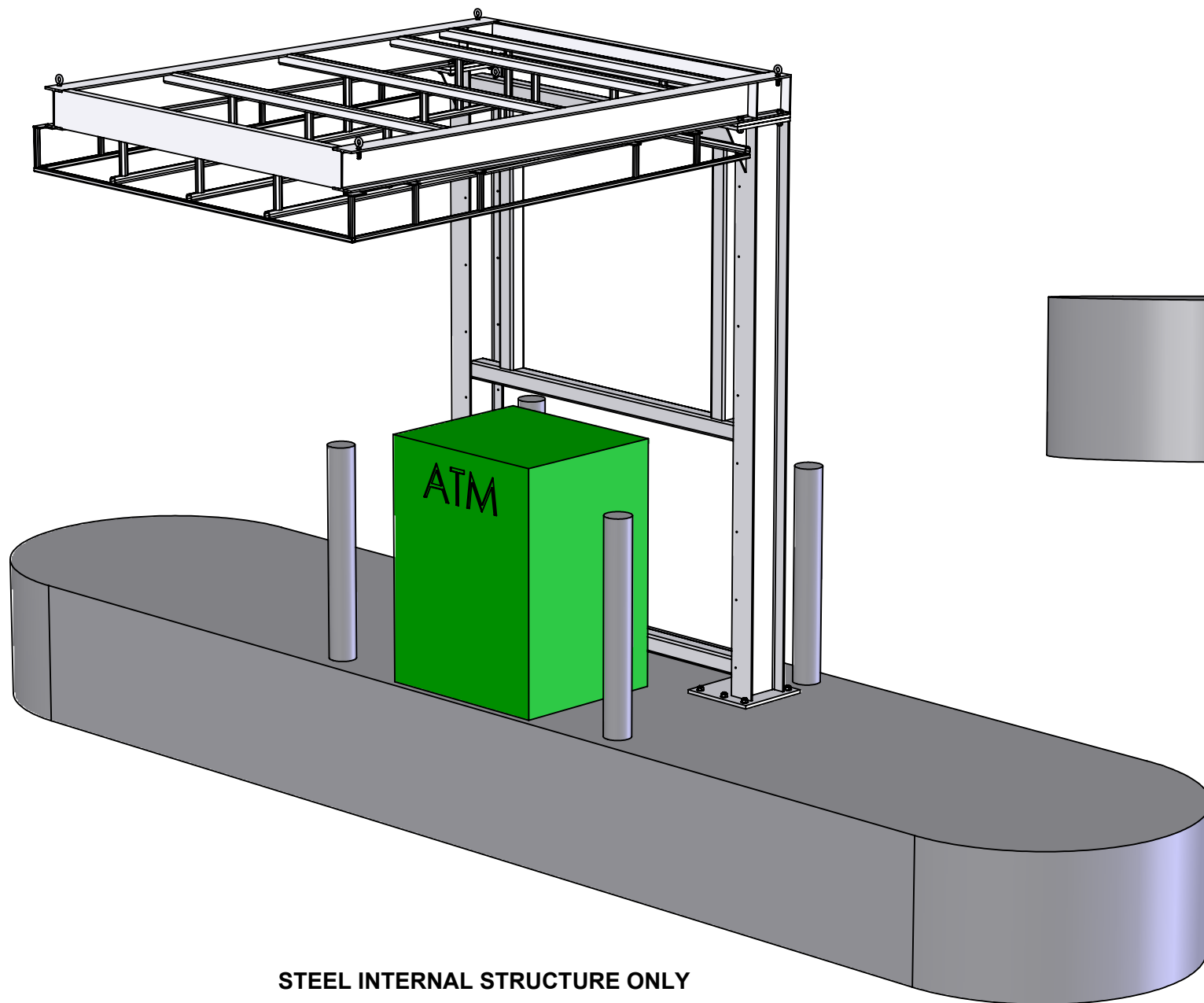
840 NW PRYOR RD
LEE'S SUMMIT, MO 64081

PROJECT NO.	16014
DRAWN BY:	CH
CHK'D BY:	PB
SHEET TITLE	

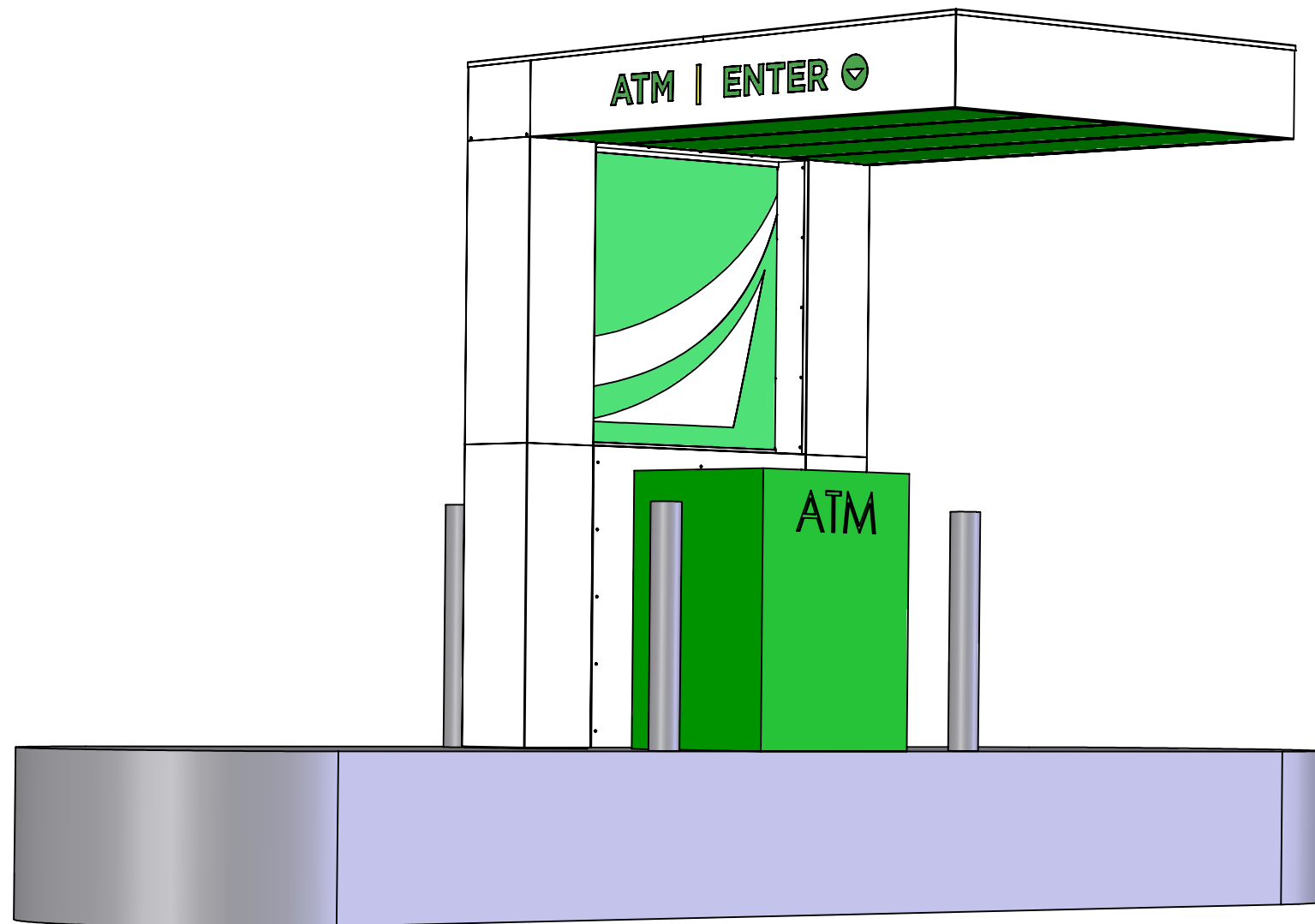
A101



PROXIMITY PLAN | **A'**

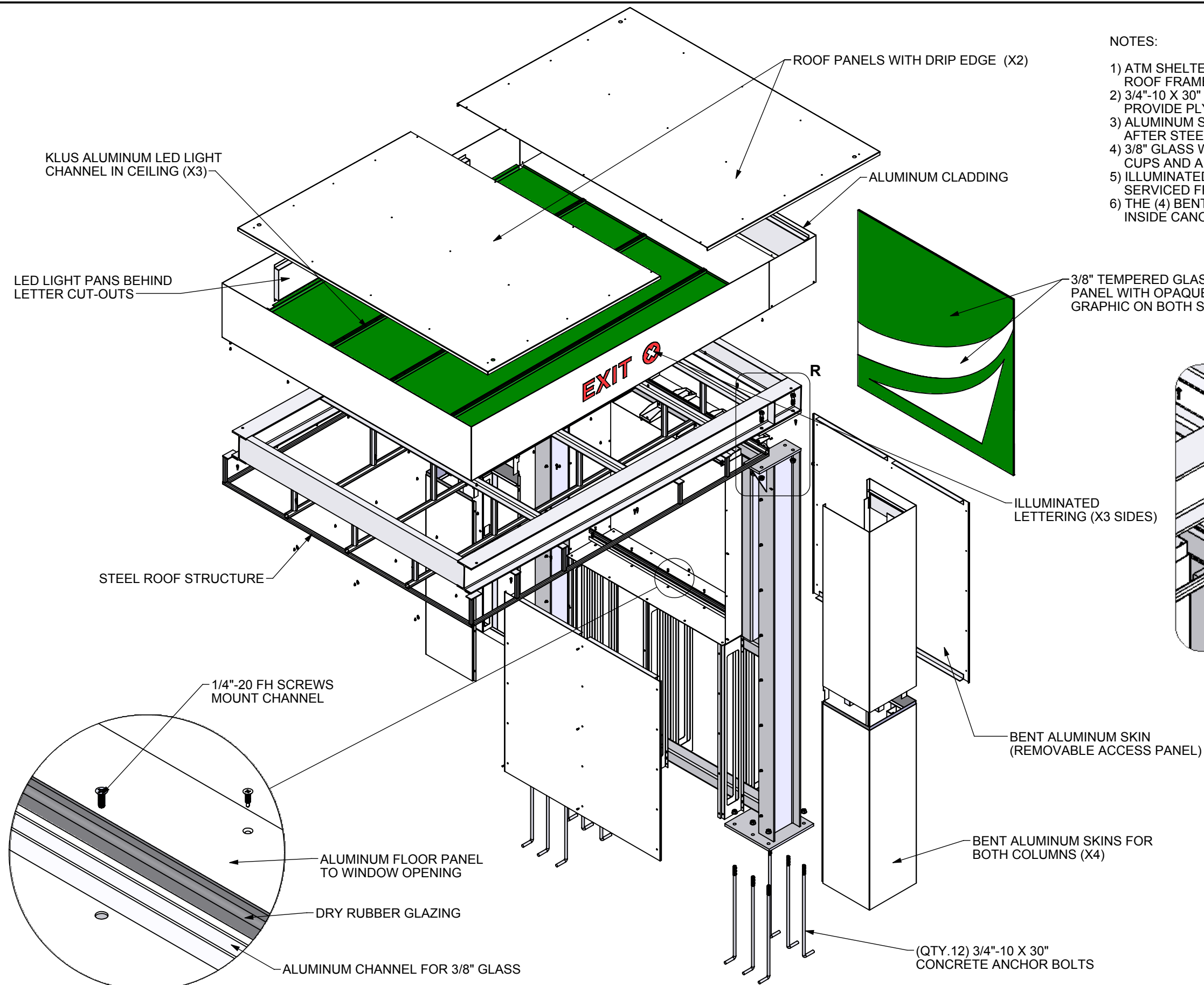


STEEL INTERNAL STRUCTURE ONLY



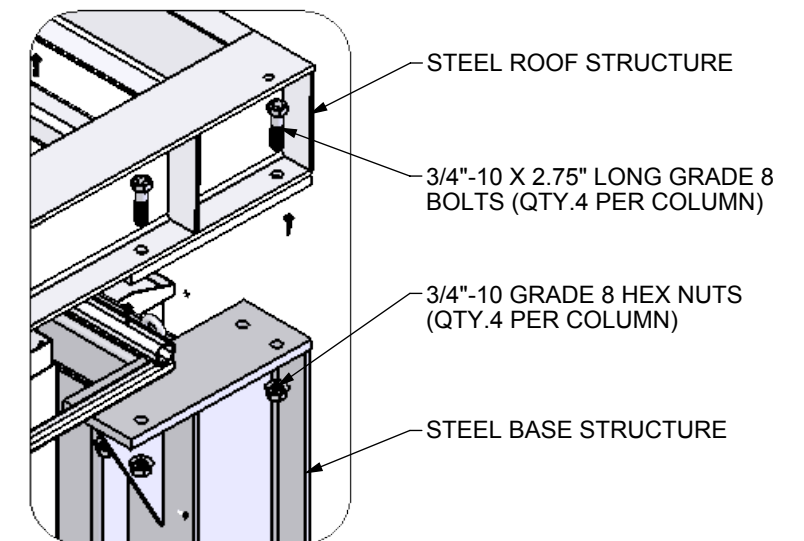
COMPLETE ATM SHELTER

Project Manager: J. WRIGHT	Engineer: E. CLAUDELL	ACADEMY BANK ATM SHELTER	
Creative Director: CLIENT	Project Engineer: B. DIBBEN		
All Dimensions are in inches unless noted. Standard Tolerances unless otherwise noted: Fractional +- 1/32 Decimal +- .015 Angles +- .5 Deg.			
Dimensional Innovations		Material:	
R1435W-01_B			
Scale: 1:28	QTY: 2	Date: 10/4/2018	Sheet: 1 of 7



NOTES:

- 1) ATM SHELTER CONSIST OF (2) INTERNAL STEEL FRAME SECTIONS (BASE AND ROOF FRAMES) AND WILL BE BOLTED TOGETHER ON SITE
- 2) 3/4"-10 X 30" CONCRETE ANCHOR BOLTS TO BE INSTALLED BY OTHERS (DI TO PROVIDE PLYWOOD TEMPLATE
- 3) ALUMINUM SKINS AND CEILING PANELS CLAD THE STEEL FRAME SECTIONS AFTER STEEL STRUCTURE IS INSTALLED ON SITE
- 4) 3/8" GLASS WINDOW IN OPENING CAN BE INSTALLED/REMOVED USING SUCTION CUPS AND A "LIFT AND DROP" METHOD
- 5) ILLUMINATED LED LIGHT CHANNELS ARE RECESSED IN CEILING AND CAN BE SERVICED FROM OUTSIDE THE FINISHED STRUCTURE
- 6) THE (4) BENT ALUMINUM CEILING PANELS CAN BE REMOVED FOR ACCESS INSIDE CANOPY

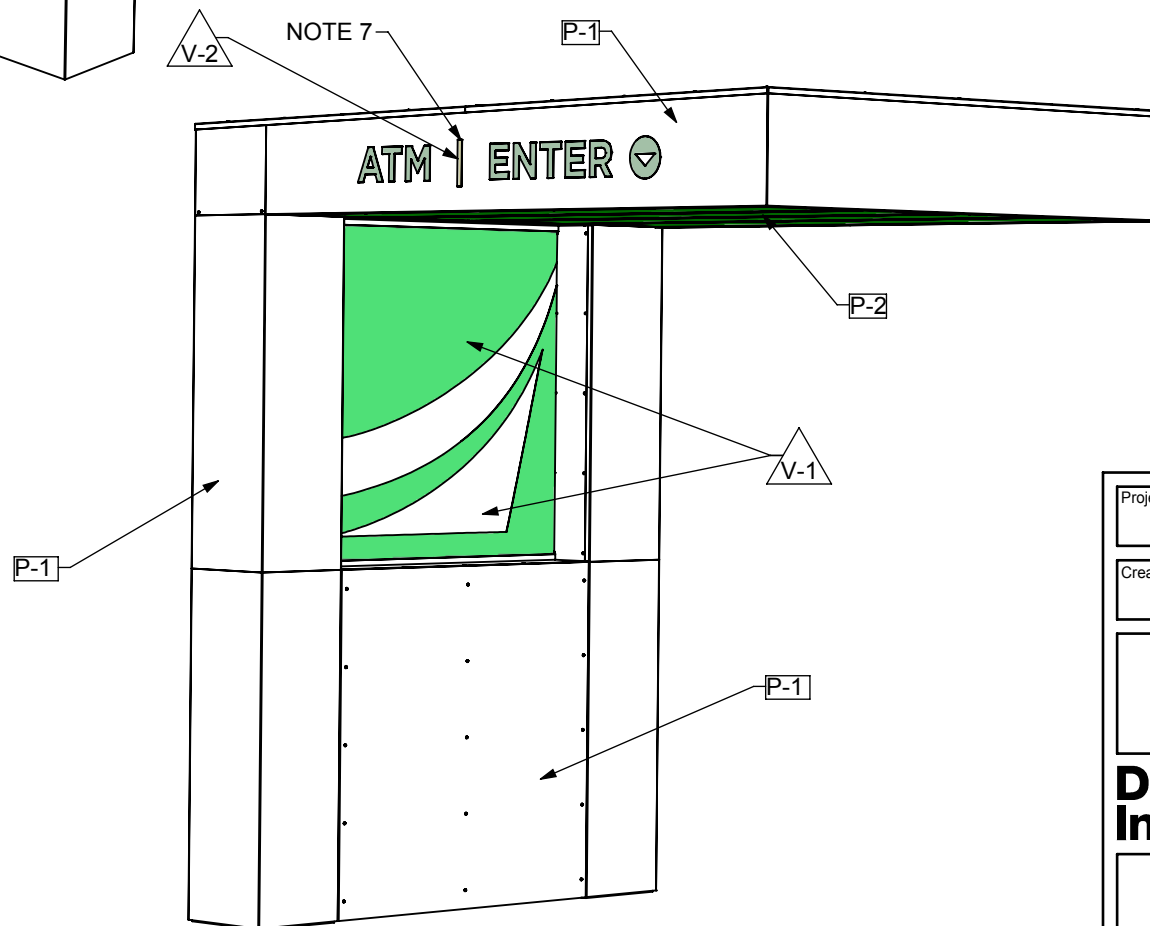
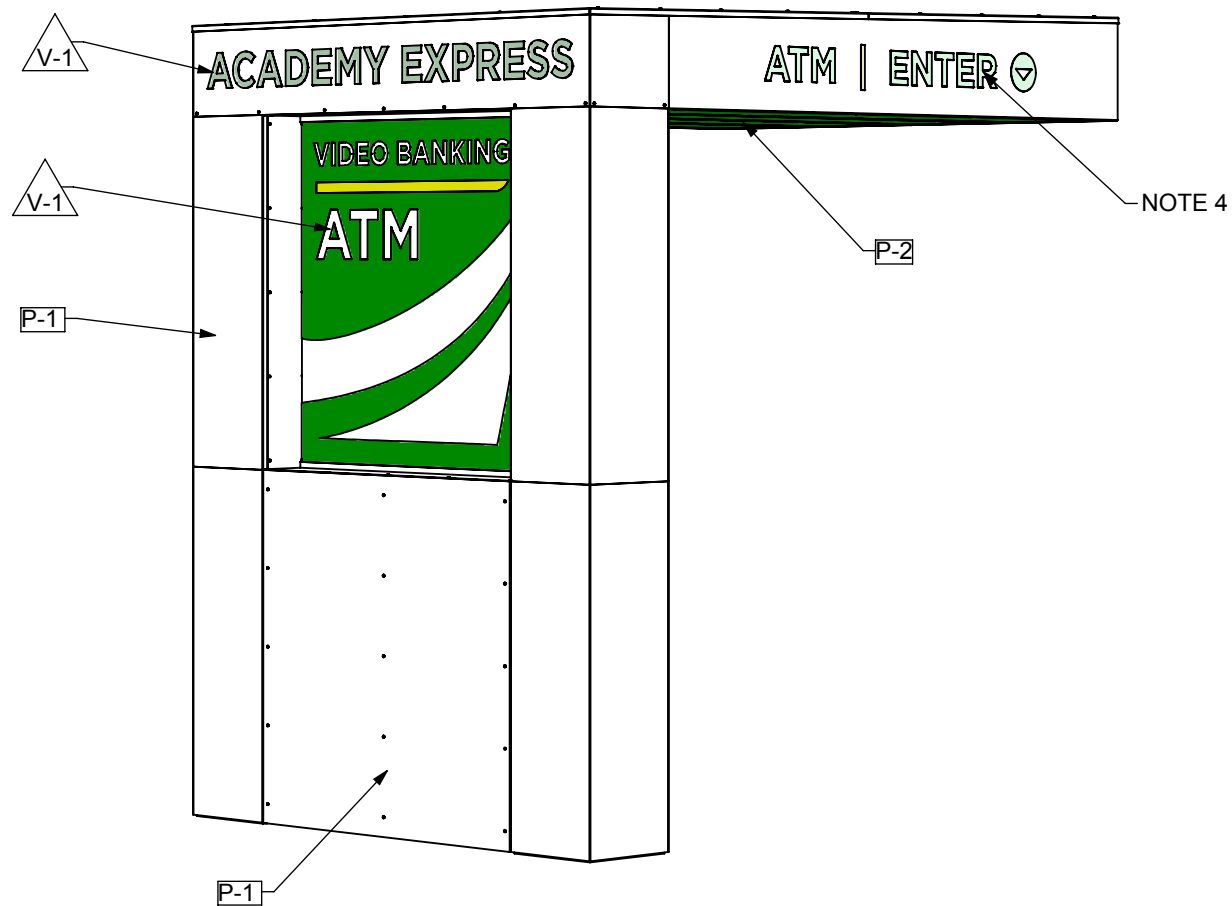
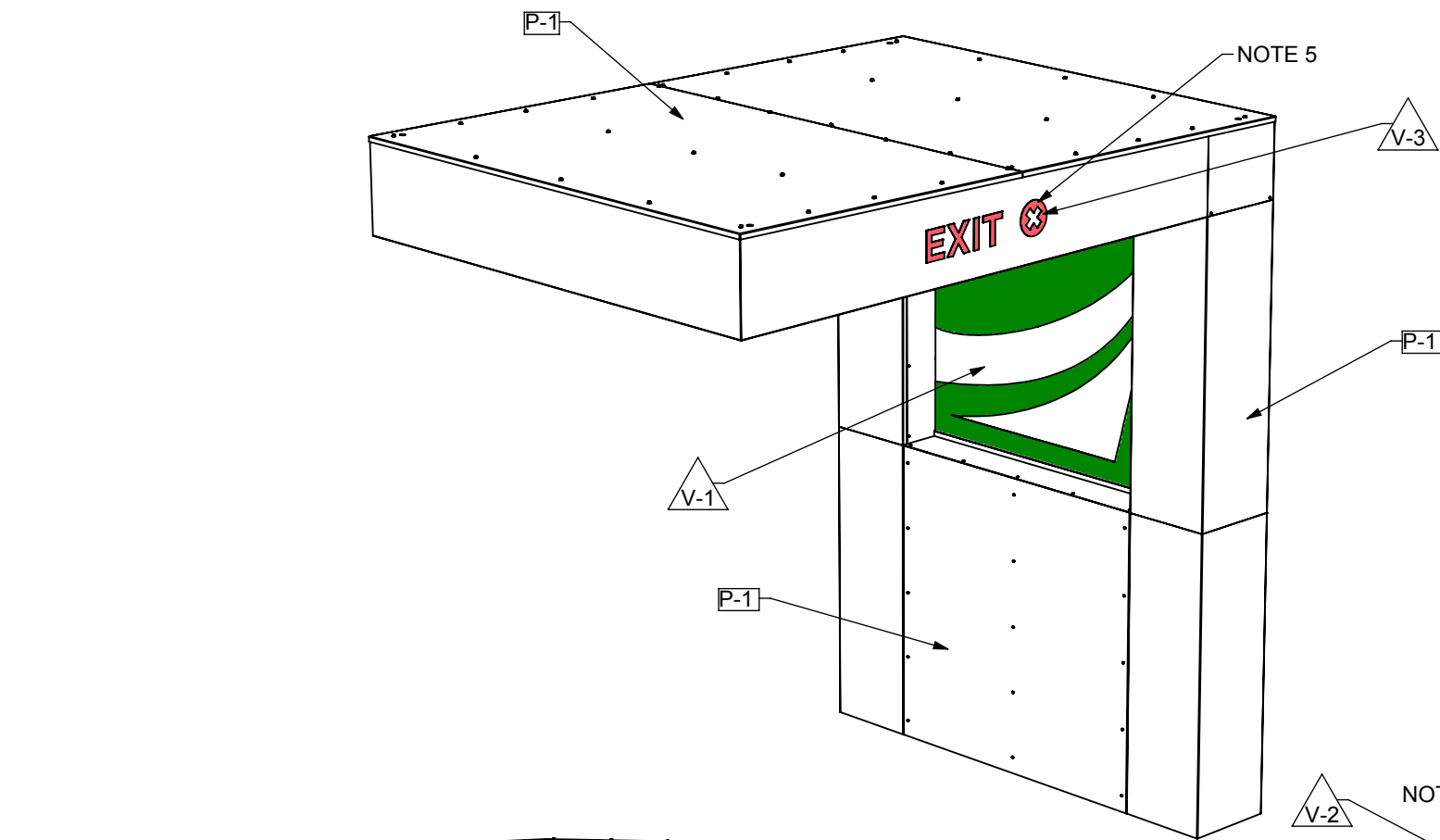


DETAIL R
SCALE 1 : 12

DETAIL AG
SCALE 1 : 4

EXPLODED ISOMETRIC

Project Manager: J. WRIGHT	Engineer: E. CLAUDELL	ACADEMY BANK ATM SHELTER	
Creative Director: CLIENT	Project Engineer: B. DIBBEN		
All Dimensions are in inches unless noted. Standard Tolerances unless otherwise noted: Fractional $\pm 1/32$ Decimal $\pm .015$ Angles $\pm .5$ Deg.			
Dimensional Innovations		Material:	
R1435W-01_B			
Scale: 1:28	QTY: 2	Date: 10/4/2018	Sheet: 2 of 7



FINISH NOTES:

- 1) STEEL STRUCTURE INSIDE TO BE HOT-DIPPED GALVANIZED BEFORE INSTALL
- 2) ALUMINUM SKINS TO BE PAINTED 'SELECT WHITE'
- 3) 3/8" TEMPERED GLASS PANEL TO RECEIVE ERV PAINTED TO MATCH BRAND STANDARD GREEN
- 4) THE (2) SIGNS ON THE CANOPY TO BE BACKED WITH CLEAR PLEX AND SECOND SURFACE GREEN VINYL ILLUMINATED WITH 5000K WHITE LEDS
- 5) THE EXIT SIGN LOGO OF CANOPY SIGN TO BE BACKED WITH RED VINYL
- 6) THE (3) STRIP LIGHTS UNDER CANOPY ARE KLUS# B5554 ALUMINUM LED EXTRUSIONS WITH FROSTED WHITE COVER AND 6000K WHITE LEDS
- 7) THE ENTER SIGN WILL HAVE (2) DIFFERENT GREEN SECTIONS OF VINYL; EXACT COLOR TBD

[P-1] 'SELECT WHITE', CS# 820, ALL OF ALUMINUM BENT RETURNS AND SKINS AND ROOF PANELS

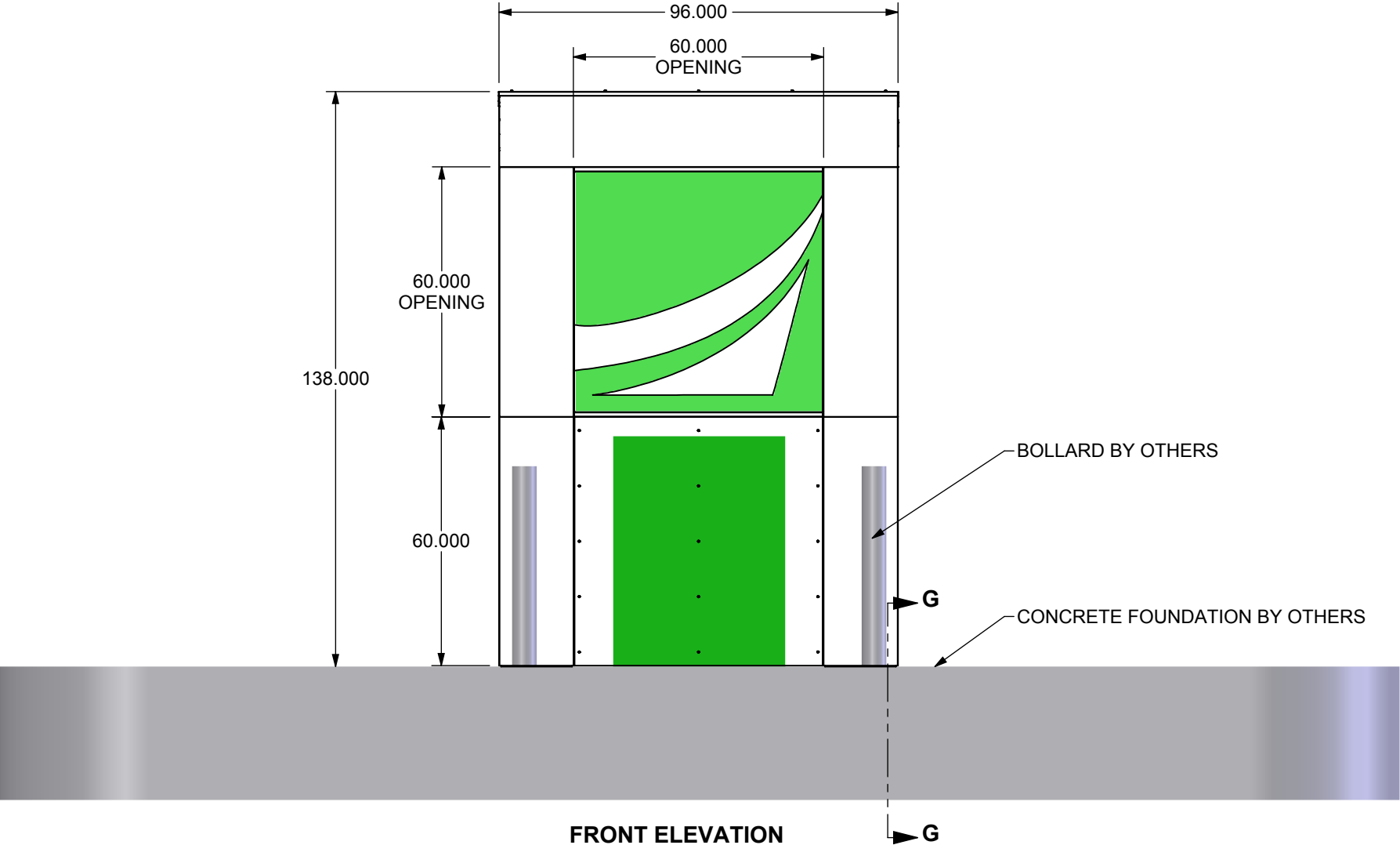
[P-2] 'GREEN', PAINT TO MATCH PMS356C, ALL OF ALUMINUM BENT CEILING PANELS

[V-1] 'BRAND STANDARD GREEN', 3MGERBER ERV PAINTED TO MATCH PMS#356C, FIRST & SURFACE OF WINDOW PANEL; SECOND SURFACE OF ACRYLIC PANELS FOR (2) ILLUMINATED SIGNAGE ON CANOPY

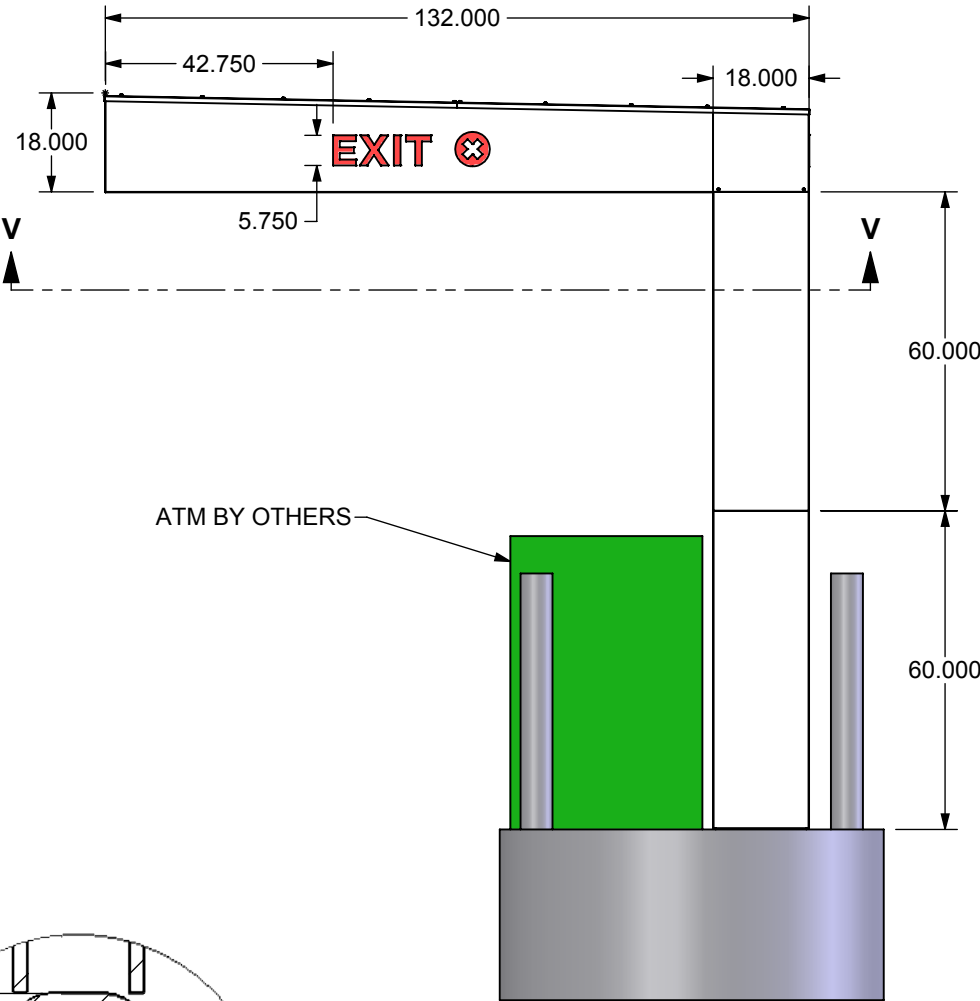
[V-2] 'GREEN', 3MGERBER EXACT COLOR TBD, SECOND SURFACE OF ACRYLIC PANELS FOR "VERTICAL LINE" ON ENTER ILLUMINATED SIGNAGE

[V-3] 'RED', 3MGERBER, SECOND SURFACE OF ACRYLIC PANEL FOR EXIT SIGN

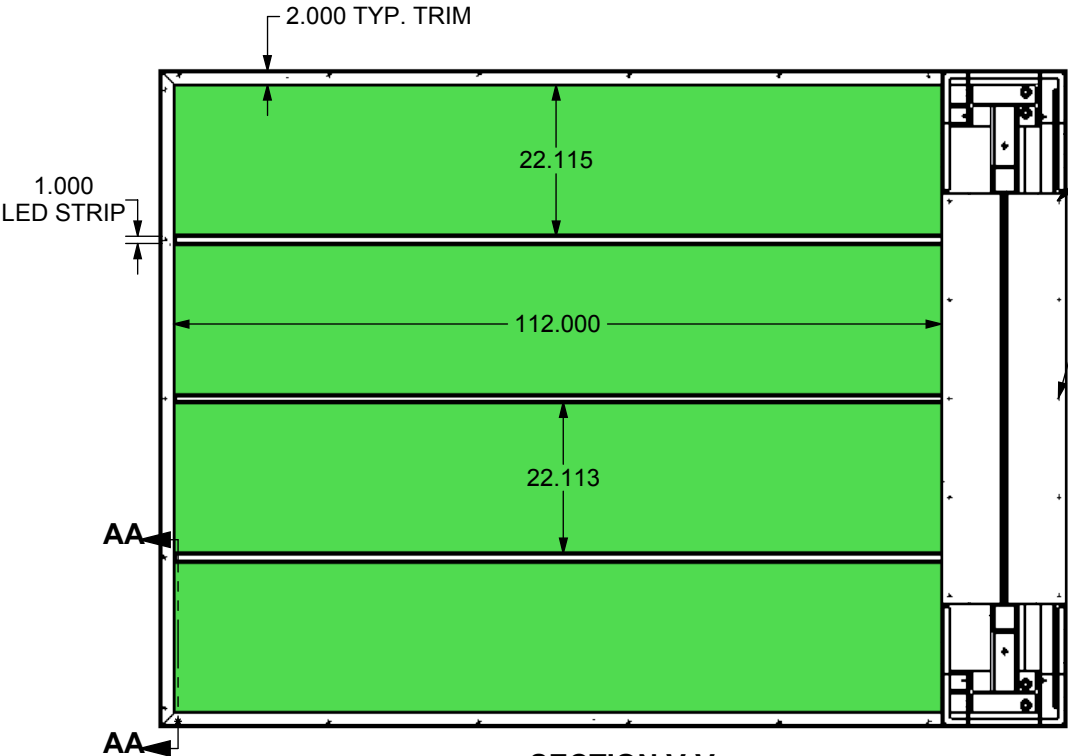
Project Manager: J. WRIGHT	Engineer: E. CLAUDELL	ACADEMY BANK	
Creative Director: CLIENT	Project Engineer: B. DIBBEN	ATM SHELTER	
All Dimensions are in inches unless noted. Standard Tolerances unless otherwise noted: Fractional +- 1/32 Decimal +- .015 Angles +- .5 Deg.			
Dimensional Innovations		Material:	
R1435W-01_B			
Scale: 1:28	QTY: 2	Date: 10/4/2018	Sheet: 3 of 7



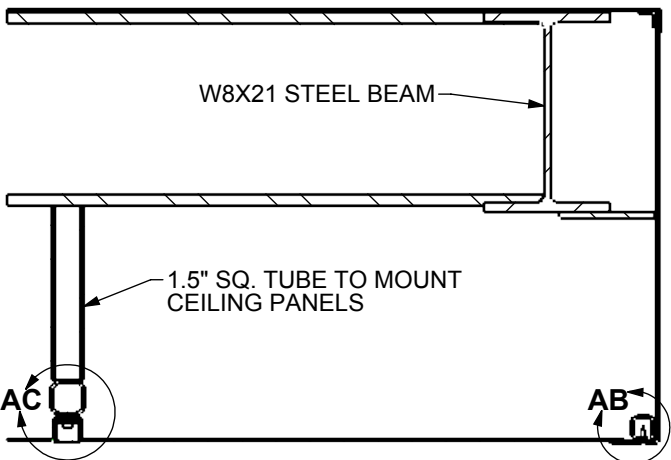
FRONT ELEVATION



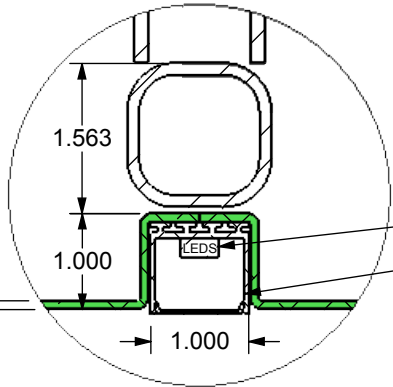
RIGHT SIDE



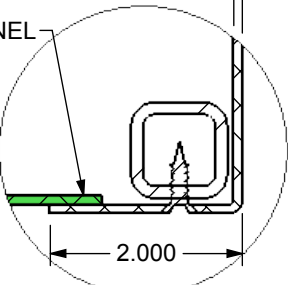
SECTION V-V
SCALE 1 : 28



SECTION AA-AA
SCALE 1 : 8



DETAIL AC
SCALE 1 : 2



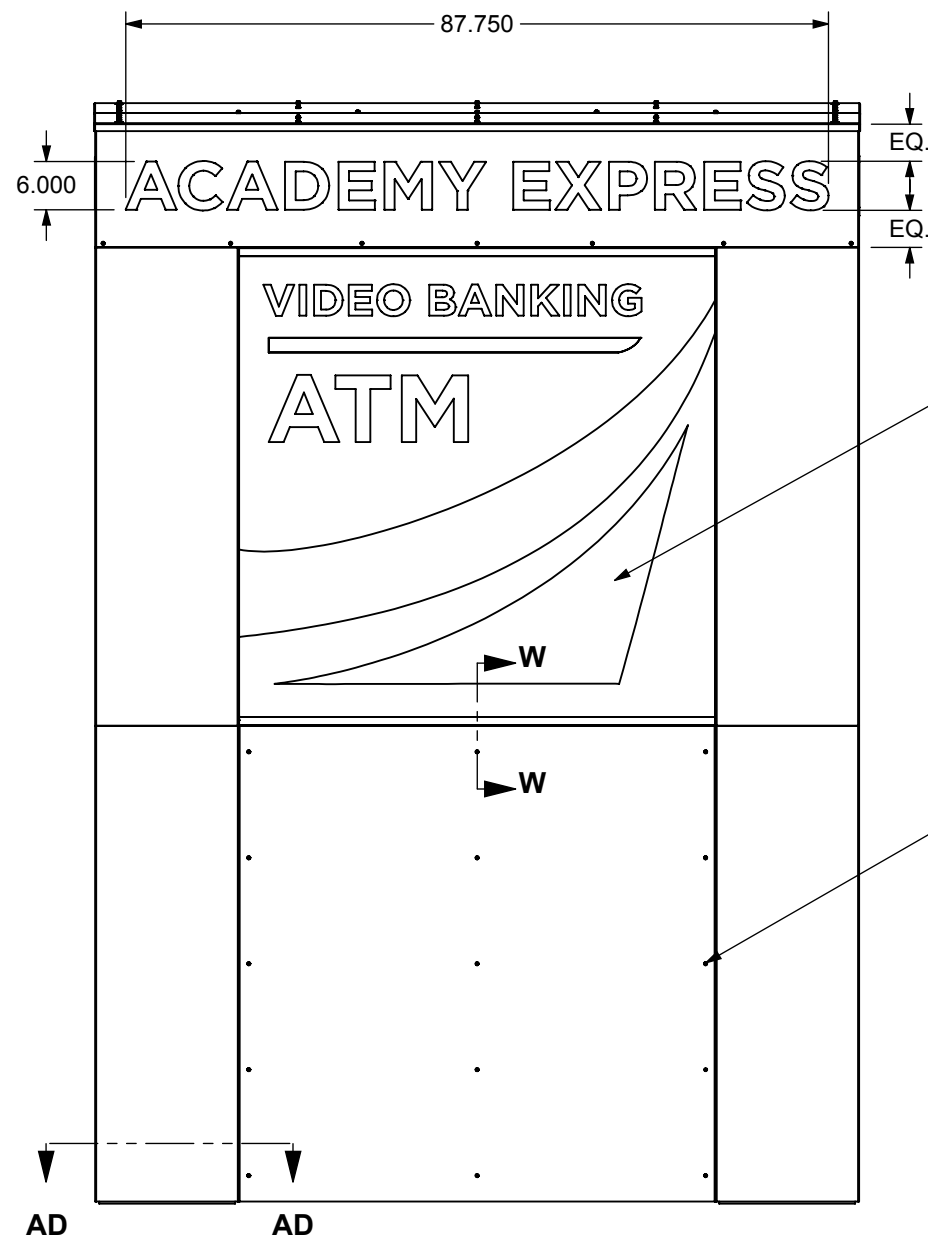
DETAIL AB
SCALE 1 : 2

Project Manager: J. WRIGHT	Engineer: E. CLAUDELL	ACADEMY BANK ATM SHELTER
Creative Director: CLIENT	Project Engineer: B. DIBBEN	
All Dimensions are in inches unless noted. Standard Tolerances unless otherwise noted: Fractional +- 1/32 Decimal +- .015 Angles +- .5 Deg.		

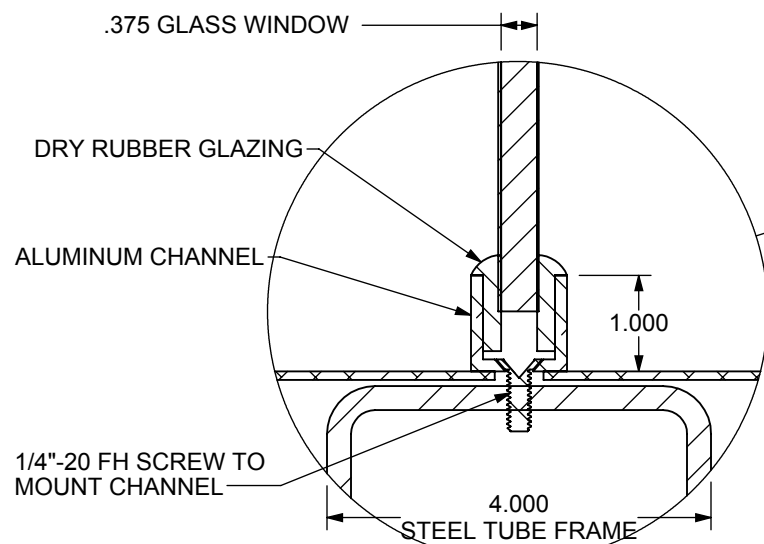
Dimensional Innovations

R1435W-01_B

Scale: 1:36	QTY: 2	Date: 10/4/2018	Sheet: 4 of 7
----------------	-----------	--------------------	------------------



BACK VIEW



DETAIL AE
SCALE 1 : 2

OPAQUE VINYL GRAPHIC
ON BACK OF GLASS

1/4" Ø BOLTS TO ATTACH BENT
ALUMINUM COLUMN SKINS

(QTY. 15) #8 FH SCREWS TO
REMOVE ACCESS PANEL

.090 BENT ALUM. SKINS

3/4" STEEL PLATE

(QTY. 6 PER PLATE) 3/4"-10 X 30"
CONCRETE ANCHOR BOLTS

W10 X 22 STEEL COLUMNS

4.000
STEEL TUBE FRAME

SECTION AD-AD
SCALE 1 : 4

REMOVABLE ALUMINUM ACCESS
PANEL (TYP EACH SIDE)

VINYL ON FIRST AND
SECOND SURFACE OF
GLASS WINDOW

#8 FH SCREWS

#8 FH SCREWS

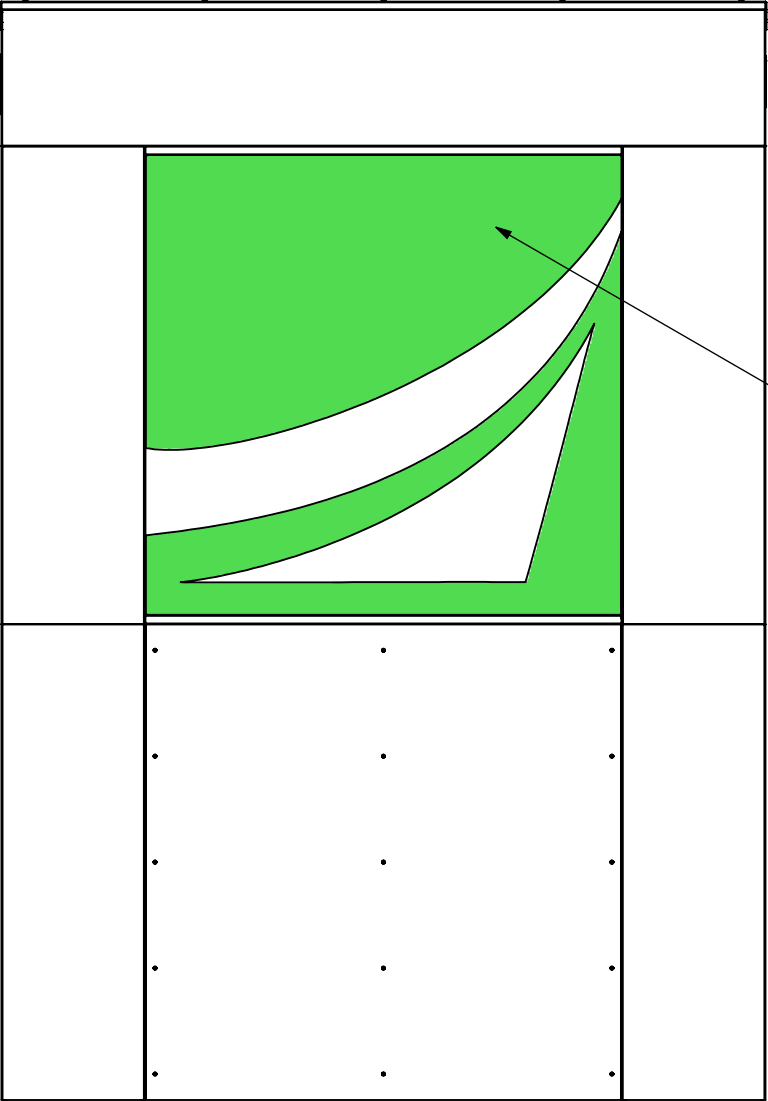
#8 SCREWS

DETAIL AF
SCALE 1 : 2

ACCESS PANEL

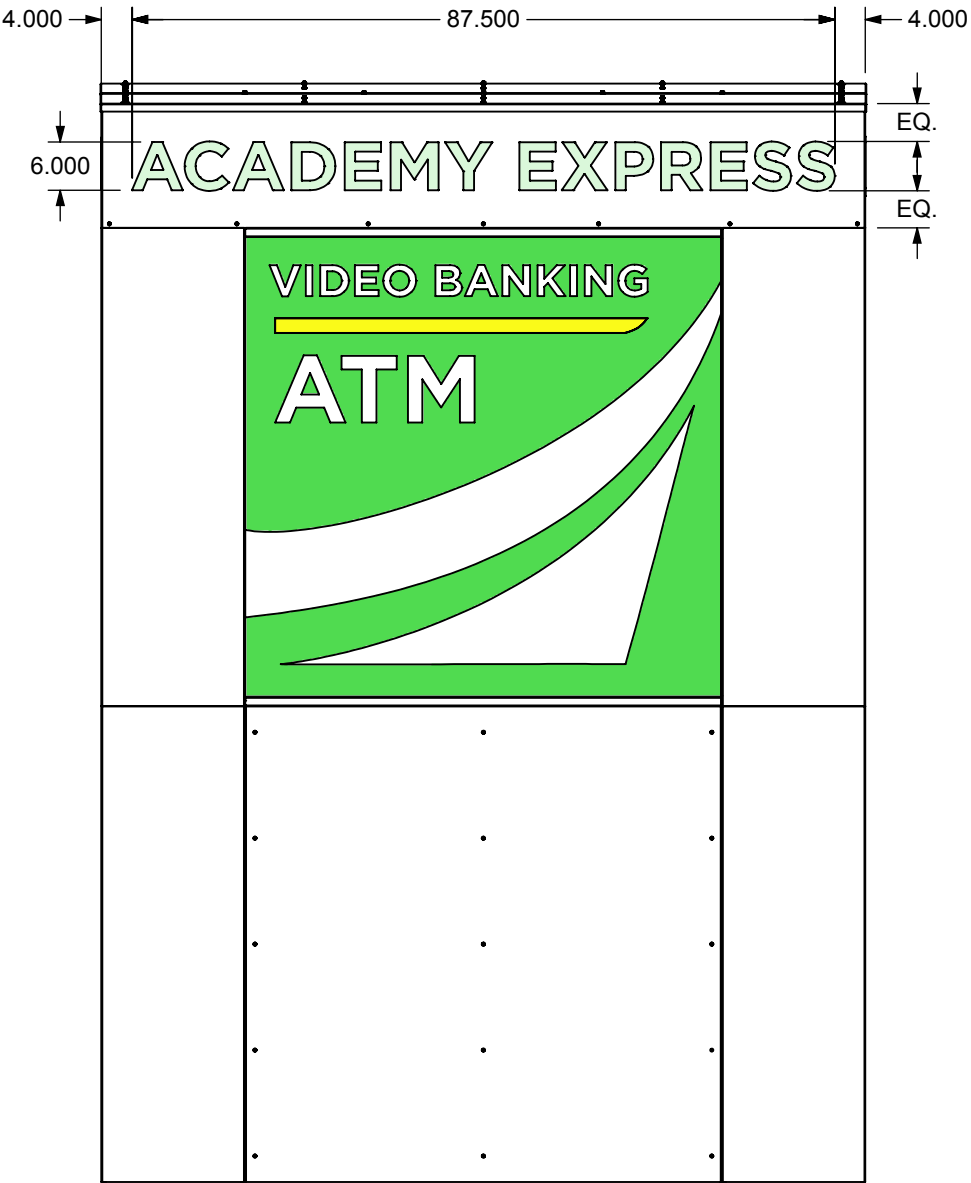
SECTION W-W
SCALE 1 : 4

Project Manager: J. WRIGHT	Engineer: E. CLAUDELL	ACADEMY BANK ATM SHELTER	
Creative Director: CLIENT	Project Engineer: B. DIBBEN		
All Dimensions are in inches unless noted. Standard Tolerances unless otherwise noted: Fractional +- 1/32 Decimal +- .015 Angles +- .5 Deg.			
Dimensional Innovations		Material:	
R1435W-01_B			
Scale: 1:24	QTY: 2	Date: 10/4/2018	Sheet: 5 of 7



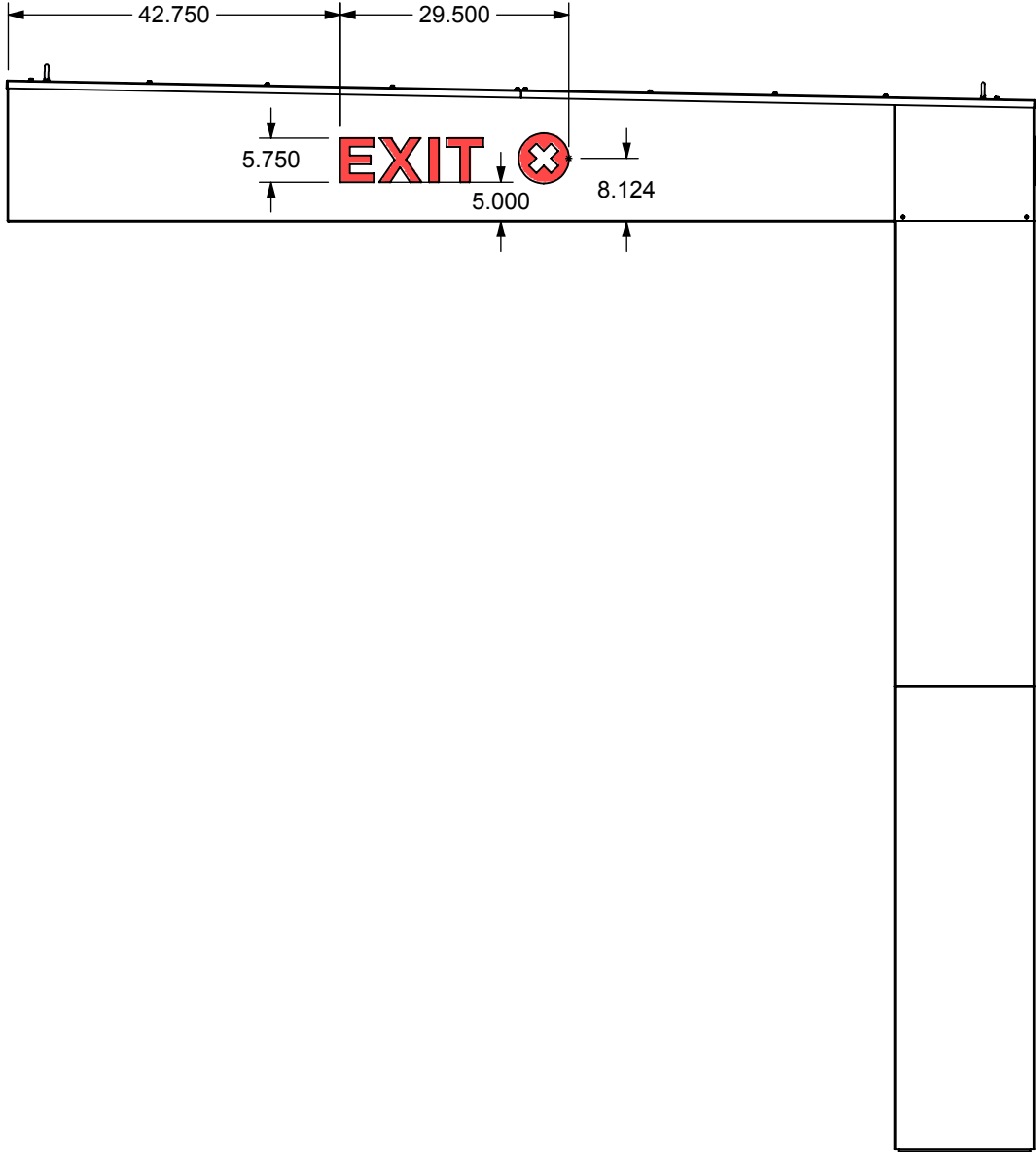
FRONT

NEED PMS# FOR YELLOW STRIPE

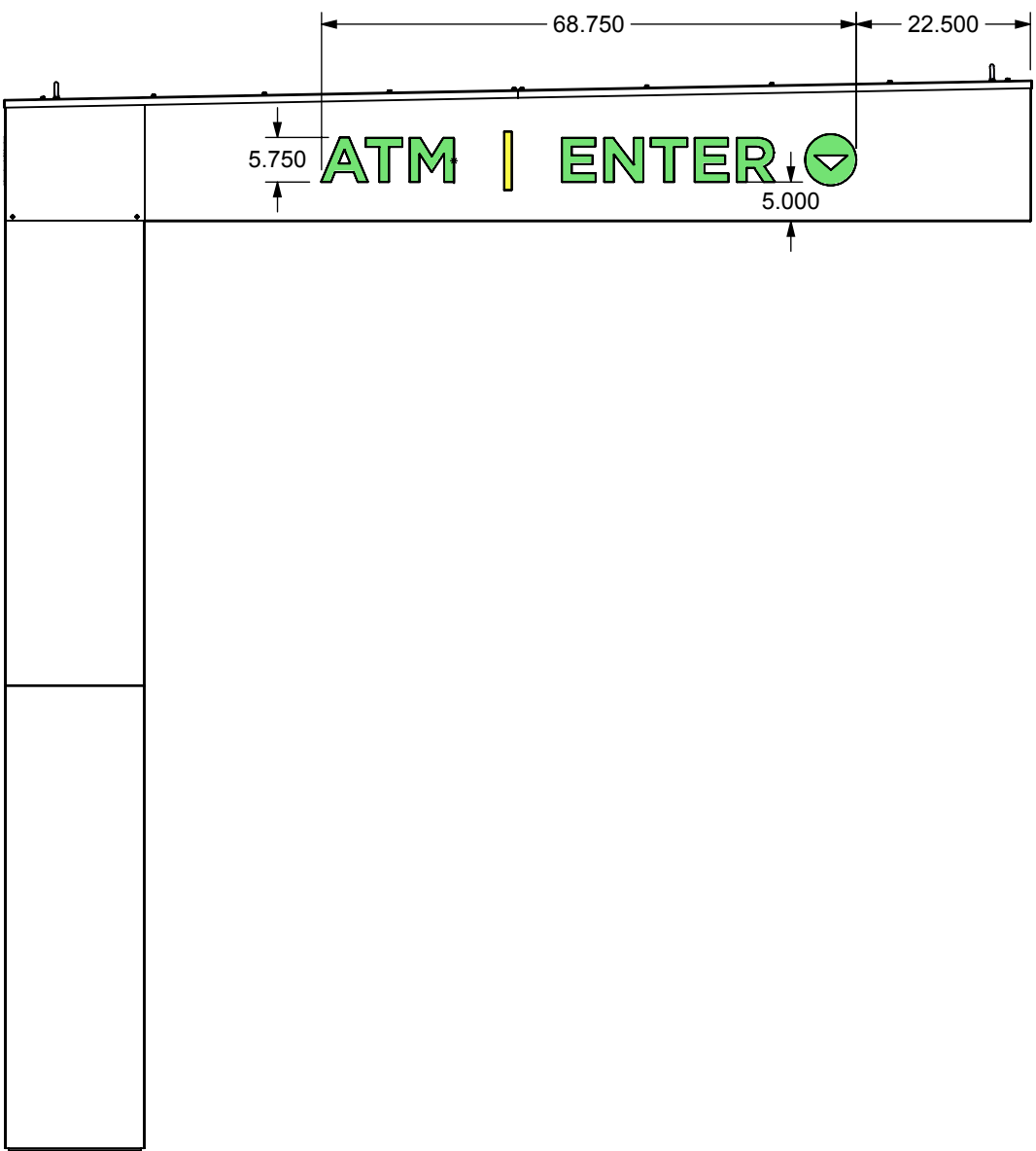


BACK

Project Manager: J. WRIGHT	Engineer: E. CLAUDELL	ACADEMY BANK ATM SHELTER
Creative Director: CLIENT	Project Engineer: B. DIBBEN	
All Dimensions are in inches unless noted. Standard Tolerances unless otherwise noted: Fractional +/- 1/32 Decimal +/- .015 Angles +/- .5 Deg.		
Dimensional Innovations		Material:
R1435W-01_B		
Scale: 1:24	QTY: 2	Date: 10/4/2018
		Sheet: 6 of 7



RIGHT



LEFT

Project Manager: J. WRIGHT	Engineer: E. CLAUDELL	ACADEMY BANK ATM SHELTER	
Creative Director: CLIENT	Project Engineer: B. DIBBEN		
All Dimensions are in inches unless noted. Standard Tolerances unless otherwise noted: Fractional +- 1/32 Decimal +- .015 Angles +- .5 Deg.			
Dimensional Innovations		Material:	
R1435W-01_B			
Scale: 1:24	QTY: 2	Date: 10/4/2018	Sheet: 7 of 7