

EXTERIOR FINISH SCHEDULE

TAG	MATERIAL	APPLICATION	MANUFACTURER	PRODUCT	COLOR/FINISH	DIMENSION
<b>FINISH MATERIALS</b>						
EF-1	EXTERIOR WOOD SIDING	FRONT FACADE EXTERIOR WALLS	NICHIHA FIBER CEMENT	VINTAGE WOOD AWP 3030	CEDAR	17-7/8" H x 119 5/16" L
EB-1	BRICK (CLIP-SYSTEM)	FRONT OF BUILDING	NICHIHA FIBER CEMENT	VINTAGE BRICK	WHITE WASH (PAINT EP-1)	7 3/8" x 2 1/2" x 3/4"
EB-2	BRICK (CLIP-SYSTEM)	ACCENT TOWER BRICK	NICHIHA FIBER CEMENT	VINTAGE BRICK	ALEXANDRIA BLUFF	7 3/8" x 2 1/2" x 3/4"
<b>EXTERIOR PAINTS</b>						
EP-1	EXTERIOR PAINT	MAIN WALL SURFACE	BENJAMIN MOORE	ULTRA SPEC EXTERIOR LOW LUSTRE (N455)	OC-125 MOONLIGHT WHITE	
EP-2	EXTERIOR PAINT	BRICK TOWER PARAPET	BENJAMIN MOORE	ULTRA SPEC EXTERIOR LOW LUSTRE (N455)	2105-20 ROOT BEER CANDY	
EP-3	EXTERIOR PAINT	DUMPSTER WALLS, REAR DOOR	BENJAMIN MOORE	ULTRA SPEC EXTERIOR LOW LUSTRE (N455)	HC-170 STONINGTON GREY	
EP-4	METAL PAINT	BOLLARDS	BENJAMIN MOORE	COROTECH HIGH SOLIDS RAPID DRY ENAMEL	SAFETY YELLOW	
EP-5	METAL PAINT	DUMPSTER GATES AND PYLON POLE	BENJAMIN MOORE	COROTECH HIGH SOLIDS RAPID DRY ENAMEL	FACTORY FINISH BLACK	
EP-6	ANTI-GRAFFITI COAT	EXTERIOR WALLS	BENJAMIN MOORE	ALIPHATIC ACRYLIC URETHANE - GLOSS	V500-00 CLEAR	
EP-7	EXTERIOR PAINT	EXTERIOR WALLS	BENJAMIN MOORE	ULTRA SPEC EXTERIOR LOW LUSTRE (N455)	"TEAL" COLOR CODE TBD	
<b>EXTERIOR MISC.</b>						
B-1	DT BAND - METAL	DRIVE-THRU BAND	BY MANUFACTURER	BY MANUFACTURER	ORANGE, PANTONE #3564 C	
B-2	BAND - METAL	OVER STOREFRONT	BY MANUFACTURER	BY MANUFACTURER	TEAL, PANTONE #326 C	
C-1	CANOPY - METAL	DRIVE-THRU CANOPY	BY MANUFACTURER	BY MANUFACTURER	ORANGE, PANTONE #3564 C	
C-2	CANOPY - METAL	BUILDING CANOPIES	BY MANUFACTURER	BY MANUFACTURER	TEAL, PANTONE #326 C	
S-1	SHUTTERS	EXTERIOR WALLS REAR OF BUILDING	BY MANUFACTURER	BY MANUFACTURER	PROVIDED BY MANUFACTURER	
DP-1	DOOR	MAIN ENTRANCE DOORS	BY MANUFACTURER	BY MANUFACTURER	ORANGE, PANTONE #3564 C	

EXTERIOR ELEVATION NOTES

- PRE-FINISHED METAL CAP FLASHING CW DRIP.
- G.C. TO PROVIDE AND INSTALL DOUBLE LAYER OF REINFORCING MESH TO MIN. 2" ABOVE GRADE AT ALL EIFS LOCATIONS (TYP.) IN ORDER TO ATTAIN ABUSE RESISTANCE STUCCO SYSTEM.
- NICHIHA VINTAGEBRICK, COLOR: ALEXANDRIA BUFF. REFER TO POPEYES MASTER SCHEDULE.
- NICHIHA VINTAGEBRICK, COLOR: WHITE WASH. REFER TO POPEYES MASTER SCHEDULE.
- EIFS. REFER TO POPEYES MASTER SCHEDULE.
- PRE-FINISHED 'BLACK ANODIZED' ALUMINUM STOREFRONT SYSTEM WITH INSULATED GLAZING.
- EXPOSED FOUNDATION TO BE PARGED AND FREE OF IMPERFECTIONS.
- GAS UTILITY METER.
- REFER TO STRUCTURAL DRAWINGS FOR FOUNDATION WALL AND FOOTING DETAILS.
- INTERNALLY ILLUMINATED BUILDING SIGNAGE PROVIDED AND INSTALLED BY SIGN COMPANY. G.C. TO PROVIDE AND INSTALL 3/4" EXTERIOR GRADE PRESSURE TREATED PLYWOOD BACKING AND ALL FINAL ELECTRICAL CONNECTION. SIGN MANUFACTURER SHALL OBTAIN STRUCTURALLY SEALED DRAWINGS AND SIGNAGE PERMITS FROM THE CITY BASED ON LOCAL REQUIREMENTS. G.C. SHALL VERIFY ACTUAL LOCATION & SIZE OF SIGNS WITH SIGN MANUFACTURER'S APPROVED DRAWINGS AND COORDINATE LOCATIONS OF BLOCKING AND UTILITIES. G.C. TO COORDINATE WITH SIGN INSTALLER TO USE VHM DRILL BIT WHILE DRILLING FOR ELECTRICAL FEED LINES AND SIGNAGE FASTENERS. ALL ELEMENTS PROVIDED BY SIGNAGE FABRICATOR TO BE REVIEWED AND APPROVED BY POPEYES PRIOR TO PRODUCTION.
- NON-ILLUMINATED BUILDING SIGNAGE PROVIDED AND INSTALLED BY SIGN COMPANY. G.C. TO PROVIDE AND INSTALL 3/4" EXTERIOR GRADE PRESSURE TREATED PLYWOOD BACKING. SIGN MANUFACTURER SHALL OBTAIN STRUCTURALLY SEALED DRAWINGS AND SIGNAGE PERMITS FROM THE CITY BASED ON LOCAL REQUIREMENTS. G.C. SHALL VERIFY ACTUAL LOCATION & SIZE OF SIGNS WITH SIGN MANUFACTURER'S APPROVED DRAWINGS AND COORDINATE LOCATIONS OF BLOCKING AND UTILITIES. G.C. TO COORDINATE WITH SIGN INSTALLER TO USE VHM DRILL BIT WHILE DRILLING FOR ELECTRICAL FEED LINES AND SIGNAGE FASTENERS. ALL ELEMENTS PROVIDED BY SIGNAGE FABRICATOR TO BE REVIEWED AND APPROVED BY POPEYES PRIOR TO PRODUCTION.
- NICHIHA VINTAGE WOOD, COLOR: CEDAR. REFER TO POPEYES MASTER SCHEDULE.
- PROVIDE & INSTALL 6" DIAMETER STEEL PIPE BOLLARD TOP AT 4'-6" A.F.F. G.C. TO PAINT "SAFETY YELLOW". REFER TO POPEYES MASTER SCHEDULE.
- DRIVE-THRU WINDOW. REFER TO DRIVE-THRU WINDOW SCHEDULE ON SHEET A11.
- N/A.
- N/A.
- N/A.
- DASHED LINE INDICATES T/O OF ROOF BEHIND PARAPET.
- C/T CABINET AND METER.
- LINE OF PARAPET WALLS BEYOND.
- GENERAL PURPOSE EXTERIOR LIGHTING FIXTURES.
- WALK-IN COOLER/FREEZER FINISH TO BE COMPLETED BY MANUFACTURER.
- METAL RAILING SUPPLIED AND INSTALLED BY G.C. (ONLY IF REQUIRED) ARCHITECT TO COORDINATE WITH CIVIL ENGINEER ON THE SITE PLAN. REFER TO DETAIL 2/A8.
- PRE-FINISHED GALVANIZED STEEL DOWNSPOUT & COLLECTOR BOX. G.C. TO COORDINATE CIVIL ENGINEERS TO CONFIRM IF DOWNSPOUTS ARE SPLASHING ON CONCRETE PAD OR TIED TO THE STORM SEWER LINE. REFER TO MECHANICAL DRAWINGS.
- ALL BASE FLASHING TO MATCH ADJACENT MATERIAL COLORS.
- HOSE BIB. G.C. TO PAINT. COLOUR TO MATCH ADJACENT STUCCO COORDINATE EXACT LOCATION WITH G.C. REFER TO MECHANICAL DRAWINGS.
- N/A.
- TEAL (PANTONE #326 C) ALUMINUM SHUTTERS, SUPPLY & INSTALL BY SIGN COMPANY.
- G.C. TO PROVIDE CONCRETE CURB ALONG DRIVE-THRU LANE. CURB TO PROJECT 8" FROM FACE OF PANELS AND LENGTH OF CURB IS EXTENT OF FEATURE WALL.
- N/A.
- REAR EXIT DOOR. REFER TO POPEYES MASTER SCHEDULE.
- WALL SCONCE SUPPLY AND INSTALL BY SIGN COMPANY.
- OPEN BOTTOM ALUMINUM CANOPY WITH DOWNLIGHT LED LIGHT FIXTURE. SUPPLY BY SIGN COMPANY AND INSTALL BY G.C. ALL CANOPIES IN WALL SUPPORT BY G.C. REFER TO STRUCTURAL DRAWINGS.
- VERTICAL SIMULATED ALUMINUM SLATS. REFER TO POPEYES MASTER SCHEDULE.
- N/A.
- CONCRETE SIDEWALK (BY G.C.) REFER TO SITE PLAN.
- NON ILLUMINATED 8" ALUMINUM FASCIA BAND. SUPPLY BY SIGN COMPANY AND INSTALLED BY G.C.
- NEW EXTERIOR DOOR. COLOR: ROOT BEER. REFER TO POPEYES MASTER SCHEDULE.
- EXTERIOR ROOF LADDER.

ISSUE TABLE

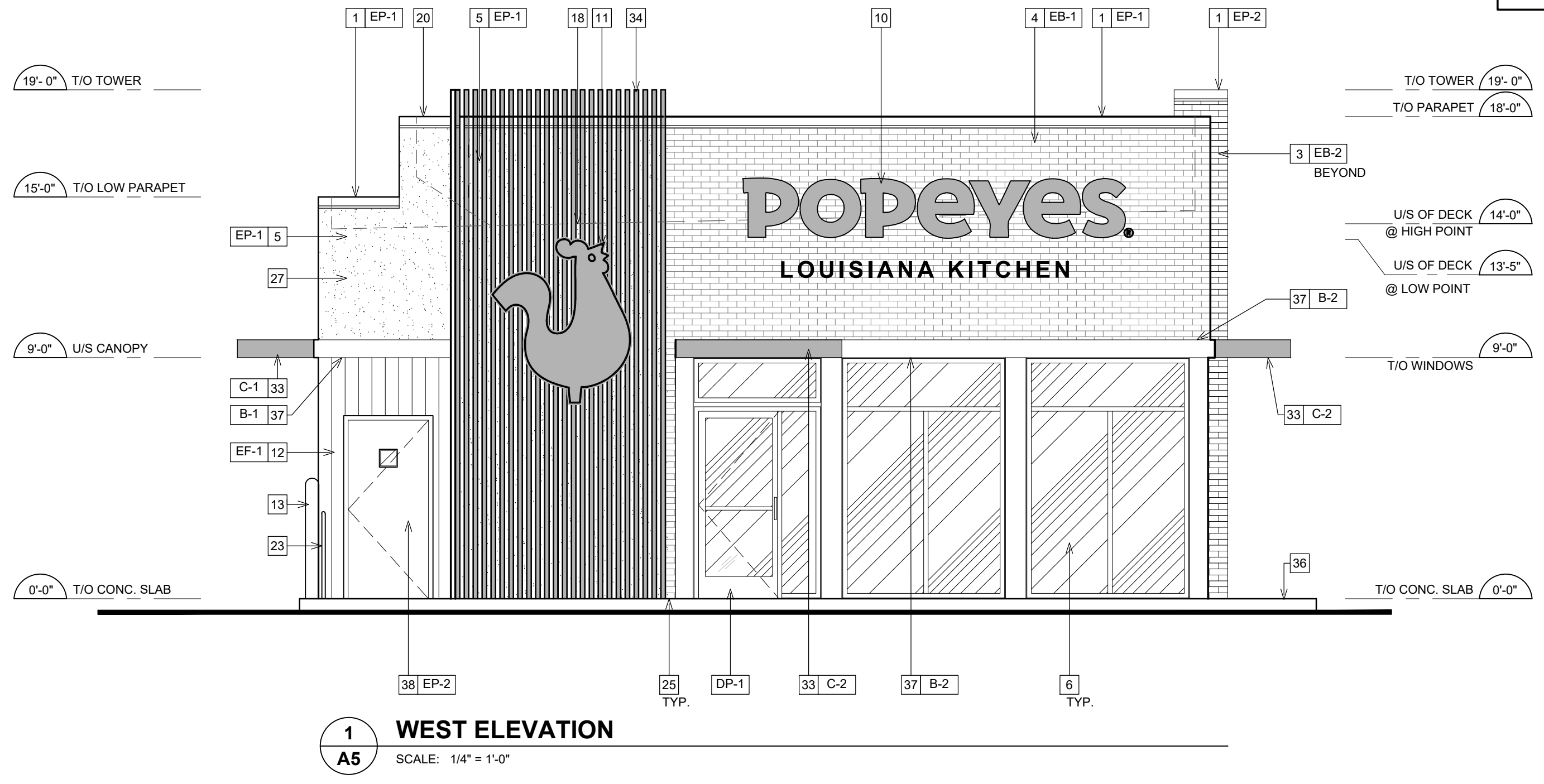
No.	Date (mm/dd/yy)	Description
01	10-27-21	2124 PROTOTYPE DOCUMENTS
02	01-26-24	2124 PROTOTYPE DOCUMENTS

REVISIONS

No.	Date	Description
01	01-26-24	CLIENT REVISIONS

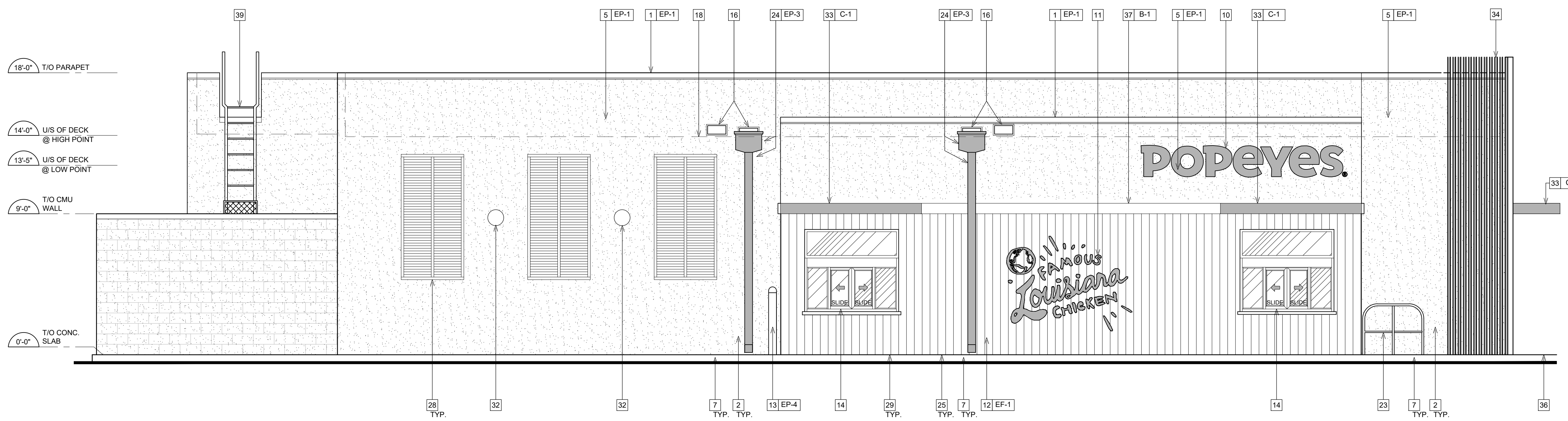
DRAWINGS REVISED AS PER DESIGN BULLETIN

No.	Date	Description
-----	------	-------------



1 WEST ELEVATION  
SCALE: 1/4" = 1'-0"

**NOTE**  
ALL SIGNAGE UNDER SEPARATE PERMIT



2 NORTH ELEVATION  
SCALE: 1/4" = 1'-0"

GENERAL NOTES

- SEALANT / CAULKING AROUND DOOR / WINDOW FRAMES. COLOUR: TO MATCH WINDOW / DOOR FRAMES.
- THE CONTRACTOR SHALL BECOME FAMILIAR WITH AND FOLLOW ALL DRAWINGS AND SPECIFICATIONS.

SYMBOL LEGEND

- 1 NOTE REFERENCE. REFER TO ELEVATION NOTES
- FNE FINISH TYPE

THIS DRAWING IS OWNED BY OR LICENSED FOR USE BY POPEYES LOUISIANA KITCHEN (OR ITS AFFILIATED OR RELATED COMPANIES) AND MAY NOT BE REPRODUCED, COPIED, DOWNLOADED, DISSEMINATED, PUBLISHED, OR TRANSMITTED IN ANY FORM OR BY ANY MEANS, EXCEPT WITH THE PRIOR WRITTEN CONSENT OF POPEYES LOUISIANA KITCHEN. COPYRIGHT INFRINGEMENT IS A VIOLATION OF FEDERAL LAW SUBJECT TO CRIMINAL AND CIVIL PENALTIES.

THE CONTRACTOR IS TO VERIFY ALL DIMENSIONS AND CONDITIONS ON THE PROJECT AND TO REPORT ANY DISCREPANCIES TO THE POPEYES LOUISIANA KITCHEN REPRESENTATIVE PRIOR TO COMMENCING WORK. THESE DRAWINGS ARE NOT TO BE USED FOR CONSTRUCTION PURPOSES UNLESS INDICATED BY POPEYES LOUISIANA KITCHEN AS "ISSUED FOR CONSTRUCTION".

Company Logo

**WARMAN ARCHITECTURE-DESIGN**  
1735 SWIFT AVE.  
NORTH KANSAS CITY, MISSOURI 64116  
V. 816.474.2233 F. 816.474.1051

Project

**POPEYES**

Store Type  
US 2124 PROTOTYPE  
2124-21

Location  
**SWC MO Route 291 & Oldham Parkway**  
Lee's Summit, MO

EXTERIOR ELEVATIONS

Drawn cdt	Checked KAW
Scale 1/4"=1'-0"	Date MAY 15, 2024
Project No. 6094-24	Drawing No. A5.0

POPEYES LOUISIANA KITCHEN MODEL 2124, ADDRESS: CITY, STATE: 2124 PROTOTYPE DOCUMENTS (OCT 27, 2021) STORE NO. XXXXX