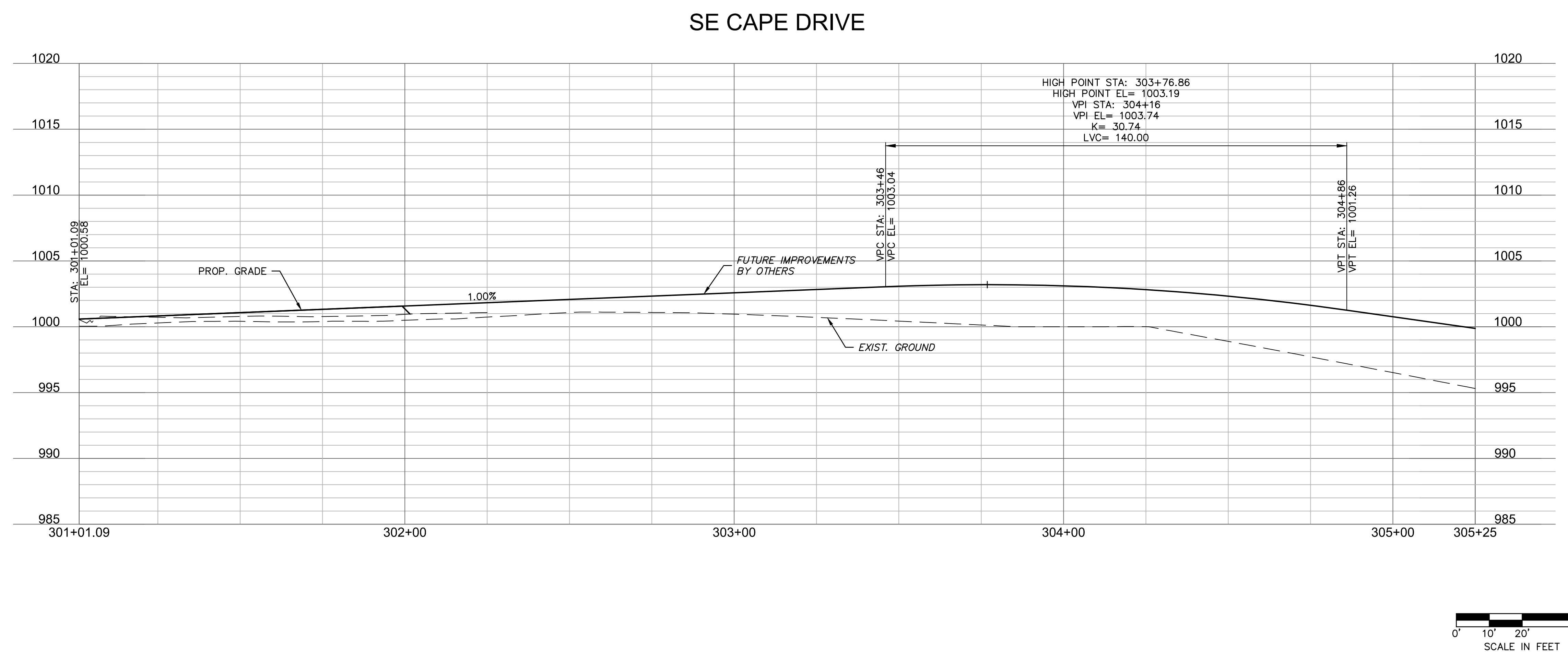
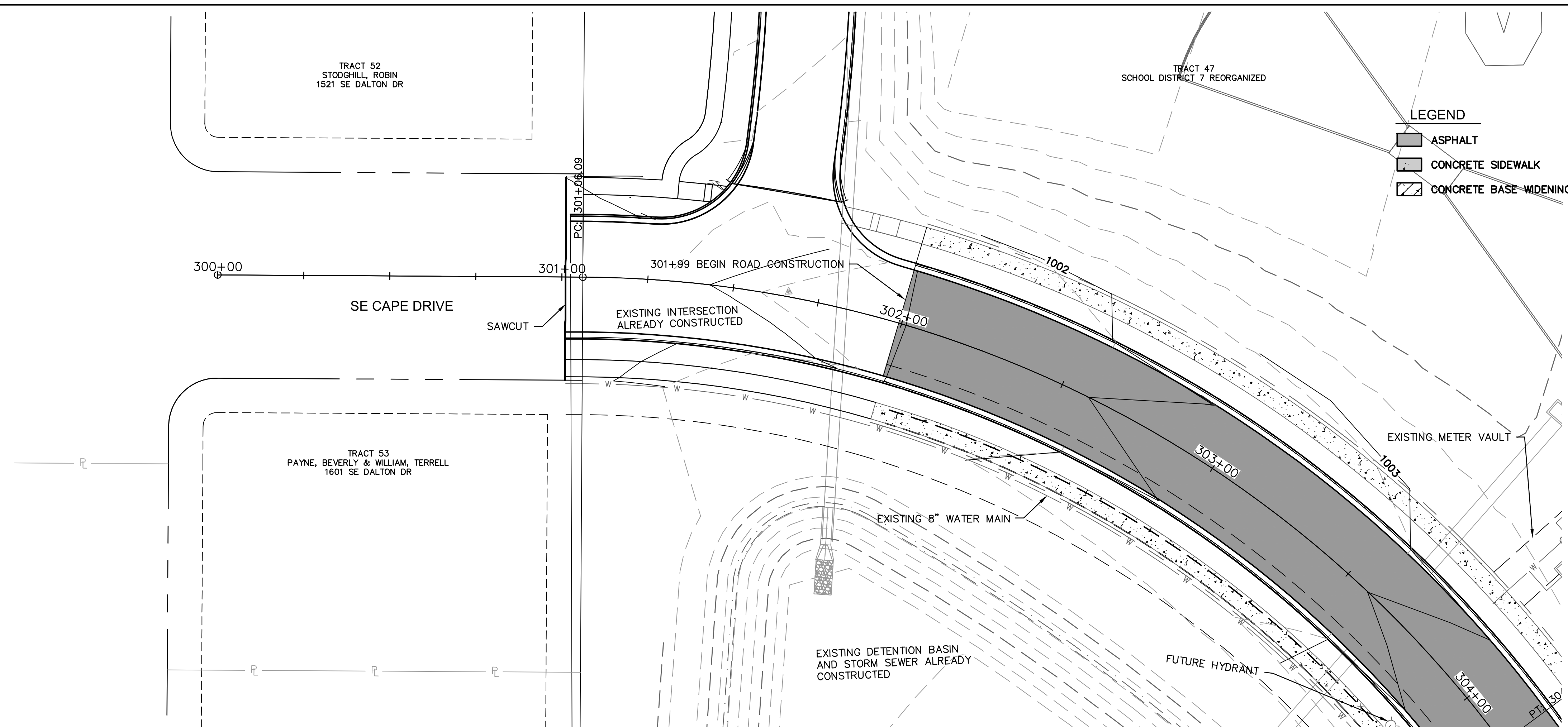


DWG: F:\2020\0001-0500\020-0103\40-Design\Exhibits\GNC\20230215\_C\_CAPE\_0200103 Exhibit.dwg USER: T\_PSTRM\_0200103  
 DATE: Jun 28, 2024 10:52am XREFS: T\_PTBK\_0200103 V\_XTOPO-2\_00103 V\_XBOU-2\_00103 C\_PBASE\_CAPE\_0200103 T\_PPROF\_0200103tmp



Olsson Engineering - MO State Certificate of Authority #001592  
7301 West 133rd Street, Suite 200 TEL: 913.381.1170  
Overland Park, KS 66213-4760 FAX: 913.381.1174 www.olsson.com

REV. NO.	DATE	REVISIONS DESCRIPTION	BY

PLAN & PROFILE  
SE CAPE DRIVE

LEE'S SUMMIT MIDDLE SCHOOL #4  
EXHIBIT A

LEE'S SUMMIT, MISSOURI

2022

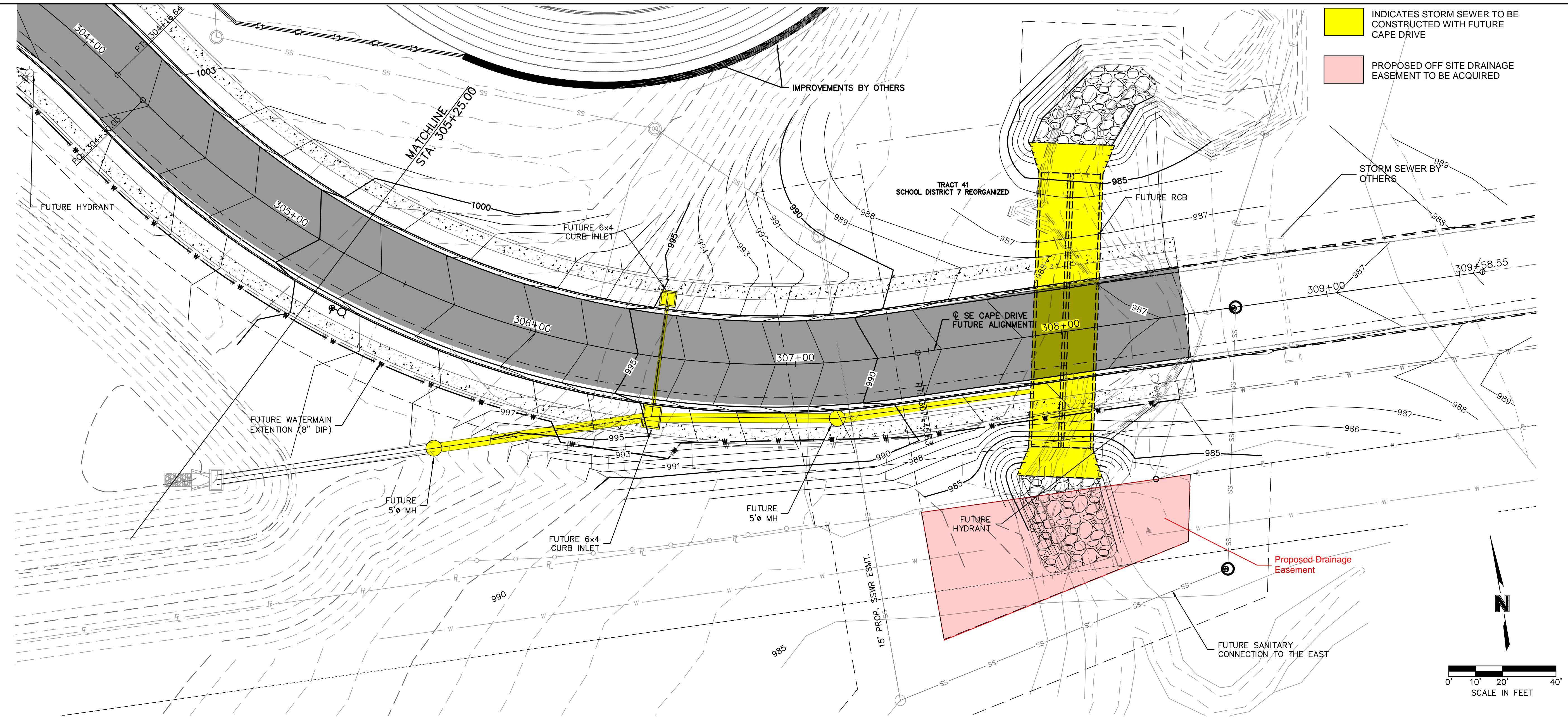
REVISIONS

C.O.A. NO.: 001592  
 DRAWN BY: RLK  
 CHECKED BY: TR  
 APPROVED BY: TR  
 QA/QC BY: TR  
 PROJECT NO.: 020-0103  
 DATE: 2021-02-01

SHEET  
1 OF 2

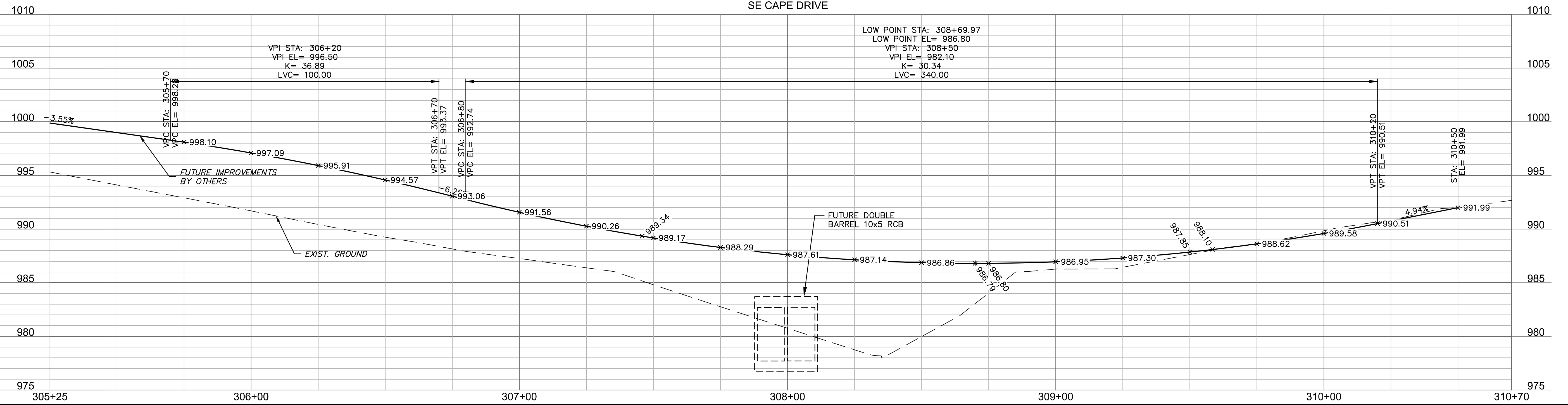
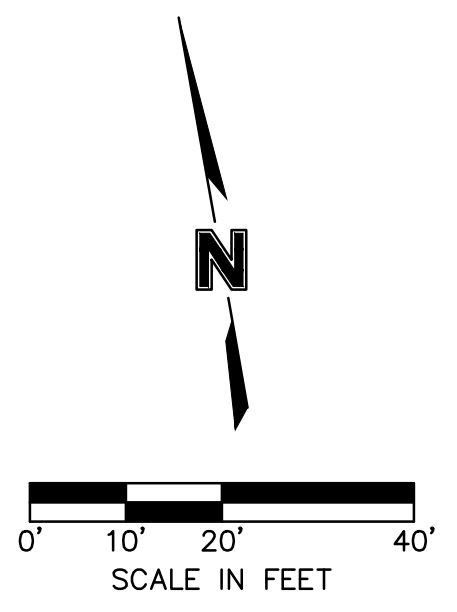


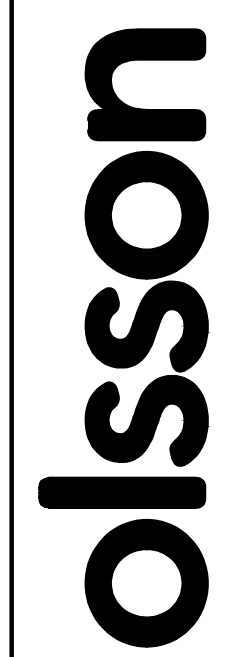
DWG: F:\2020\0001-0500\020-0103\40-Design\Exhibits\GNCV\20230215\_C\_CAPE\_0200103 Exhibit.dwg  
 DATE: Jun 28, 2024 10:54am  
 XREFS: T\_P1BLK\_0200103 V\_XBOU-2\_00103 V\_XTOPO-2\_00103  
 USER: T\_PSTRM\_0200103  
 C\_PBASE\_CAPE\_0200103 T\_PPROF\_0200103mp




INDICATES STORM SEWER TO BE CONSTRUCTED WITH FUTURE CAPE DRIVE

PROPOSED OFF SITE DRAINAGE EASEMENT TO BE ACQUIRED





Olsson Engineering - MO State Certificate of Authority #001592  
 7301 West 133rd Street, Suite 200 TEL: 913.381.1170  
 Overland Park, KS 66213-4750 FAX: 913.381.1174  
 www.olsson.com



REV. NO.	DATE	REVISIONS DESCRIPTION	BY

PLAN & PROFILE  
SE CAPE DRIVE

LEE'S SUMMIT MIDDLE SCHOOL #4  
EXHIBIT A

LEE'S SUMMIT, MISSOURI

2022

C.O.A. NO.:	001592
DRAWN BY:	RLK
CHECKED BY:	TR
APPROVED BY:	TR
QA/QC BY:	TR
PROJECT NO.:	020-0103
DATE:	2021-02-01

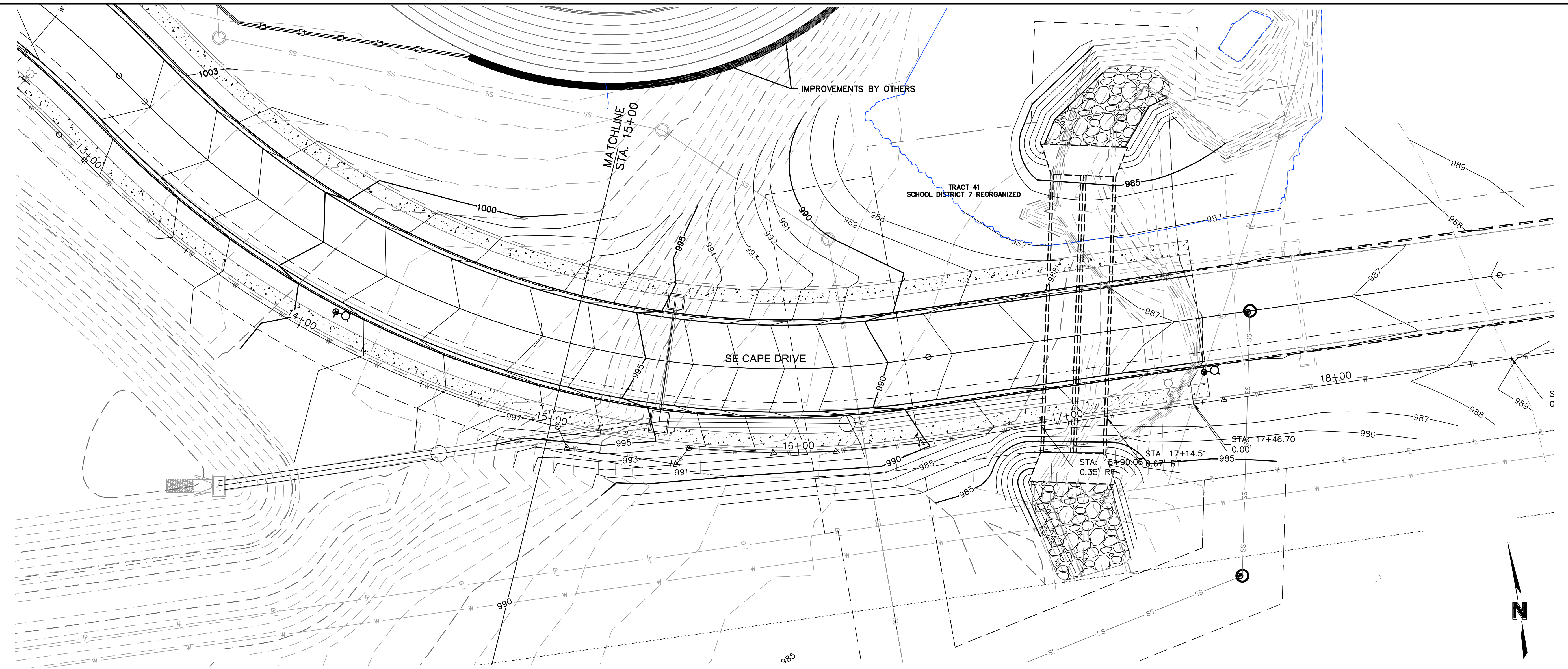
**SHEET**  
2 OF 2



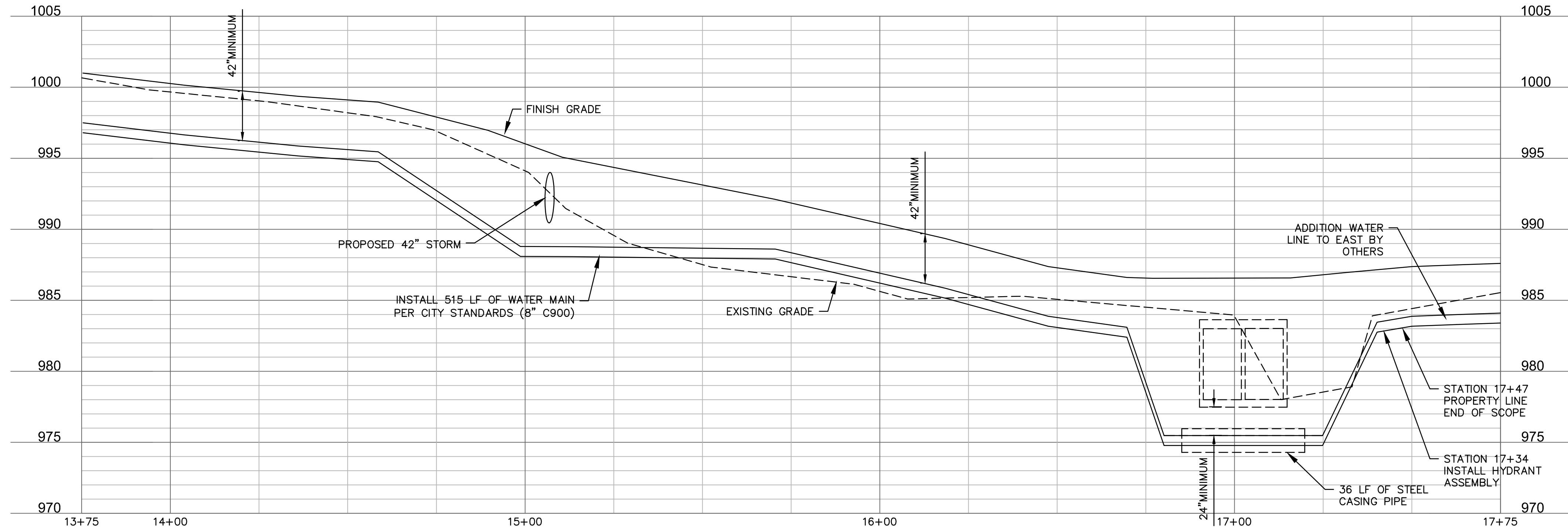




DWG: F:\2020\0001-0500\020-0103\40-Design\Exhibits\GNCV\20230215\_scape\waterC\_CAPE\_0200103\_Exhibit.dwg  
 DATE: Jun 28, 2024 10:59am  
 XREFS: T\_PTBK\_0200103 V\_XBOU-2\_00103 V\_XTOFO-2\_00103 T\_PSTRM\_0200103 C\_PBASE\_CAPE\_0200103 T\_PPROF\_0200103tmp  
 USER: tparsons

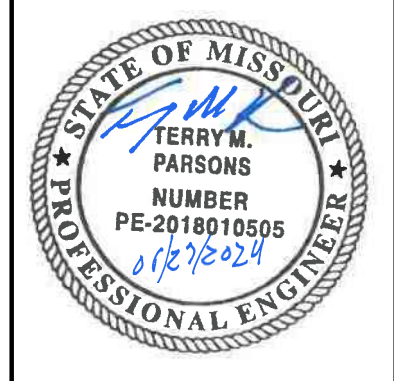


CAPE DRIVE - WATER MAIN



**olsson**

Olsson Engineering - MO State Certificate of Authority #001592  
 7301 West 133rd Street, Suite 200 TEL: 913.381.1170  
 Overland Park, KS 66213-4750 FAX: 913.381.1174 www.olsson.com



REV. NO.	DATE	REVISIONS DESCRIPTION	BY

WATERMAIN EXTENSION PLAN & PROFILE  
 SE CAPE DRIVE

LEE'S SUMMIT MIDDLE SCHOOL #4  
 EXHIBIT A

LEE'S SUMMIT, MISSOURI

20230215\_scape\DWG\CAPE\_0200103\_Exhibit.dwg  
 DATE: 2021-02-01

C.O.A. NO.: 001592  
 DRAWN BY: RLK  
 CHECKED BY: TR  
 APPROVED BY: TR  
 QA/QC BY: TR  
 PROJECT NO.: 020-0103  
 DATE: 2021-02-01