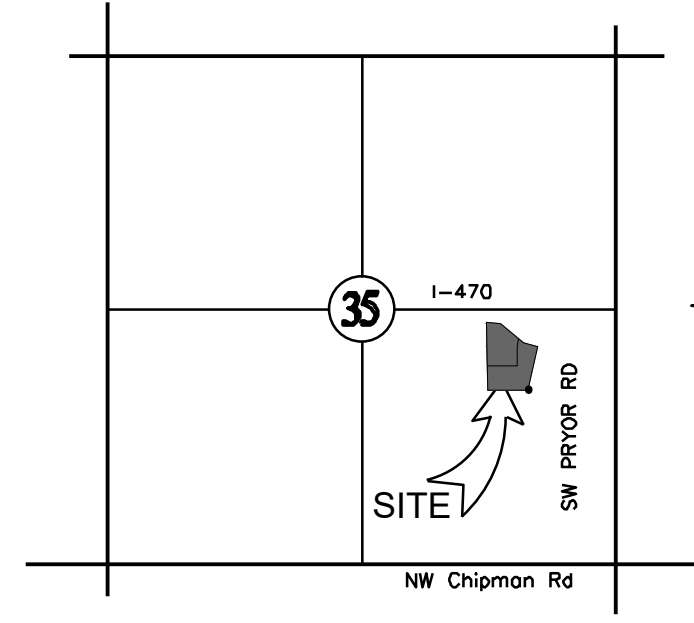


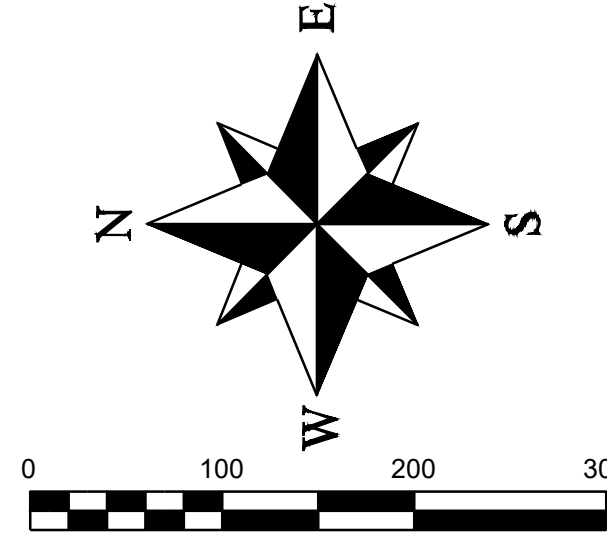
PLAT BOUNDARY DESCRIPTION

All of Lots 13 and 14, Streets of West Pryor, Lots 1 thru 14, Tracts "A", "B", "C" & "D", a subdivision as recorded in the Office of the Recorder, Jackson County, Missouri, as Document No. 2019E0032538
Containing 6.65 acres more or less.



LEGEND

- ⊙ Found Survey Monument (As Noted)
- ⊙ Set 3" Bar and Cap (2005008319-D)
- ⊙ State Plane Coordinate Identification
- U.E. Utility Easement
- S.E. Sanitary Sewer Easement
- P.C.A.E. Public Common Area Easement
- BL Building Line
- (###) Address



Preliminary Plat
Oldham Village
Lots 11 - 18
Section 7, Township 47, Range 31
Lee's Summit, Jackson County, Missouri

REVISIONS	
DATE	

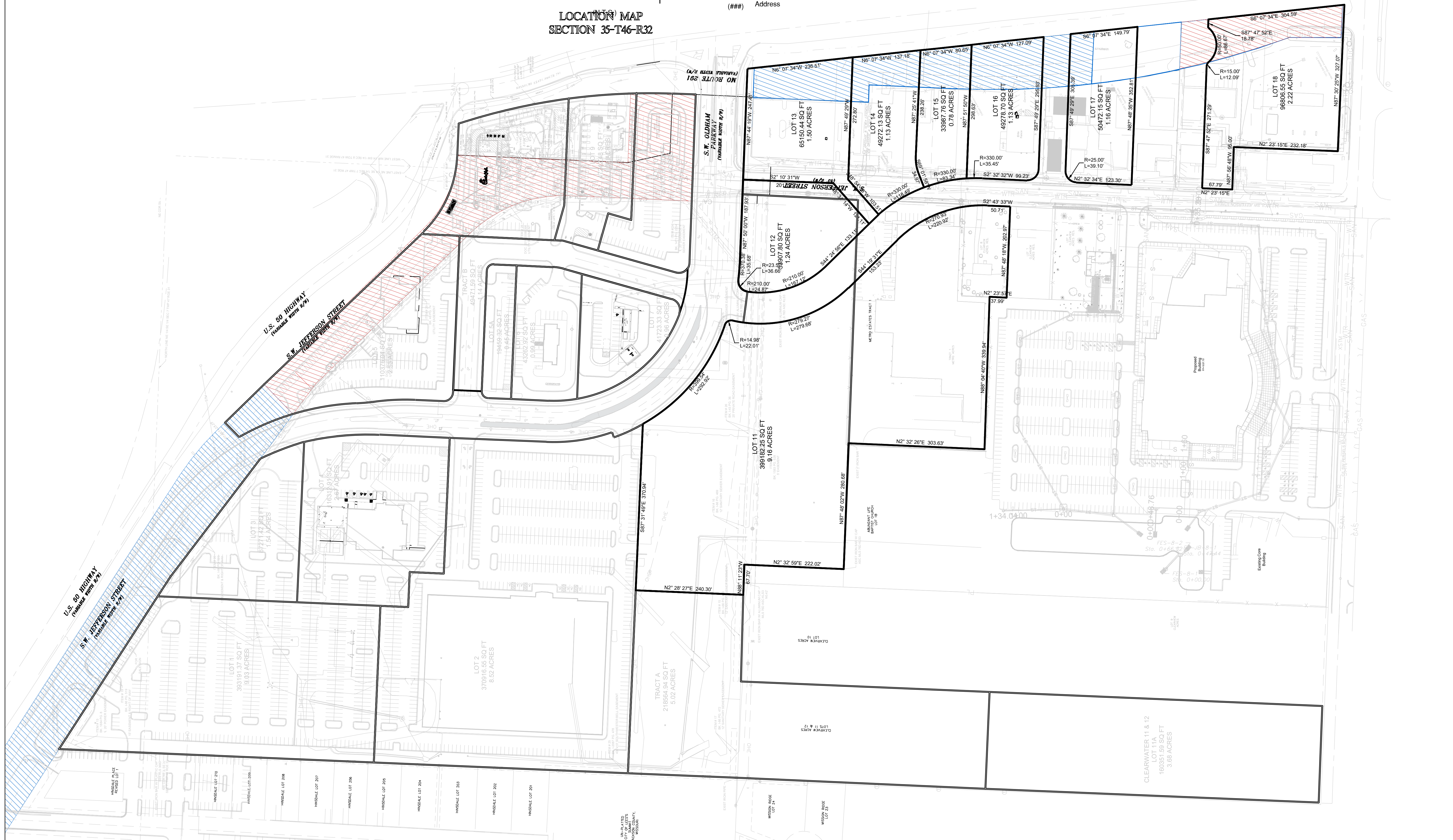
Preliminary Plat
Oldham Village, Lots 1 - 11A & Tract A
Lee's Summit, Jackson County, Missouri

Preliminary Plat

SHEET	SECTION	TOWNSHIP	RANGE	COUNTY	JOB NO.
1	7	47	31	Jackson	0606m
DRAWN BY M. Schlicht, PLS, PE					DATE OF PREPARATION June 24, 2024
SCALE 1" = 100'					



ENGINEERING SOLUTIONS
ENGINEERING & SURVEYING
50 SE 30TH STREET
LEE'S SUMMIT, MO 64082
P: (816) 623-9888 F: (816) 623-9849



UN-PLATTED
CITY RECORDS
AND PLATS
JACKSON COUNTY,
MISSOURI