



KAW VALLEY ENGINEERING, INC.

Office: 913.894.5150

Fax: 913.894.5977

Web: www.kveng.com

Address: 14700 West 114th Terrace
Lenexa, KS 66215

May 28, 2024

C23D1880

City of Lee's Summit
Development Services
220 SE Green Street
Lee's Summit, Missouri 64063

**RE: COMMERCIAL FINAL DEVELOPMENT PLAN
LSHS 2020 ATHLETIC FIELD IMPROVEMENTS
LEE'S SUMMIT, MISSOURI**

To Whom it May Concern:

Kaw Valley Engineering, Inc. (KVE) has received comments from City of Lee's Summit for the above referenced project on May 28, 2024 and issues the following response.

ENGINEERING REVIEW

1. Phase 2 Plans Sheet C100: A 30-foot-wide drainage easement is proposed but is not warranted since this will be a private storm line. Please remove the easement from the plans. **The City and Olsson have proposed the 30' D/E and intends to connect the Blue Parkway Storm System to the LSSD storm sewer. It is assumed that the City and their consultant has evaluated the impacts of routing public water through the LSHS Campus.**
2. Phase 2 Plans: Where are the plan and profiles of the new storm line that connects the curb inlet on the realigned roadway to the existing storm structure near the existing parking lot? This should be shown as a private storm line, and the hydraulic grade line for the design storm shown on the profile view. **The City and Olsson intend to route public water to the LSHS inlet.** This work is not proposed by the LSSD and therefore no storm sewer plan and profiles have been provided.
3. Phase I Conditions of approval: The Engineer's estimate of probable construction costs has been accepted for Phase I of this project., and the engineering Plan and Inspection Fee (which is calculated at 3% of the total infrastructure cost have been included. These must be paid prior to the issuance of an infrastructure permit and/or the final process of a building permit \$ 18,403.79. **Noted.**
4. Prior to the commencement of any construction activities, the Contractor shall contact Field Engineering Inspections at (816)-969-1200 to schedule a project coordination meeting with the assigned Field Engineering Inspector. **Noted.**
5. Please be aware that any future repair work to public infrastructure (e.g., water main repair, sanitary sewer repair, storm sewer repair, etc.) within public easements will not necessarily include the repair of pavement, curbing, landscaping or other private improvements which are located within the easement. **Noted.**
6. Please be aware that the Phase 2 of the Final Development Plan may be subject to additional comments if the Blue Parkway Road alignment changes during design or other factors. **Noted.**

FIRE REVIEW

1. Indicate where the fire hydrant along the east side of the parking lot is being relocated to. Preference would be to have it west of its current location on the west side of the parking lot near the crosswalk.

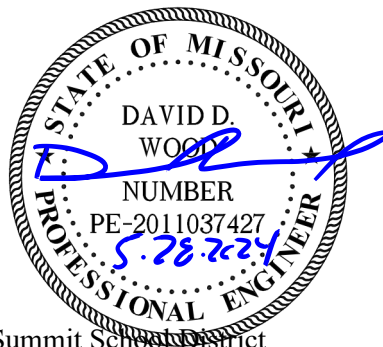
The Hydrant in the parking lot services as required protection for the building and will be part of this project. Submit plans showing relocation of the hydrant.

The City's contractor is relocating the hydrant to the west side of the new LSHS access drive as part of the Blue Parkway Relocation project as illustrated on the attached plan sheet from HG Consult, Inc. It will replace the existing fire hydrant removed by the City's contractor during relocation of the public water main.

If you have any questions or need additional information regarding the proposed project, don't hesitate to contact me at (913) 894-5150 or at wood@kveng.com.

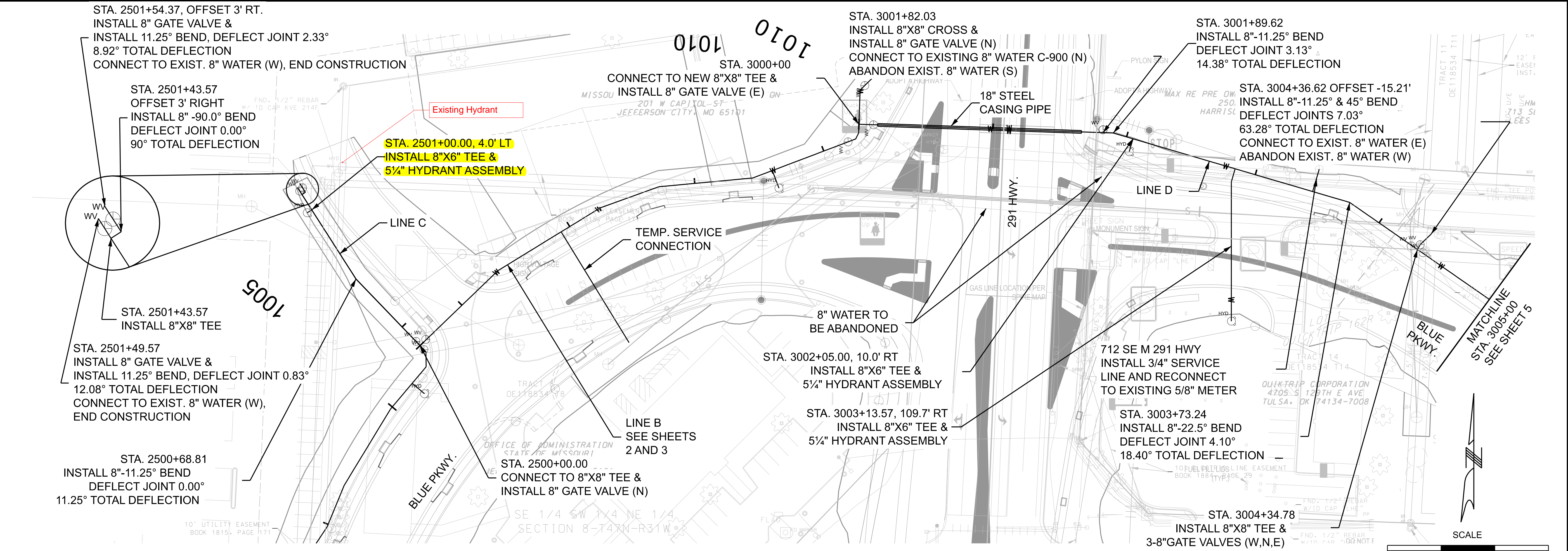
Respectfully submitted,
Kaw Valley Engineering, Inc.

David D. Wood, P.E.
Project Manager



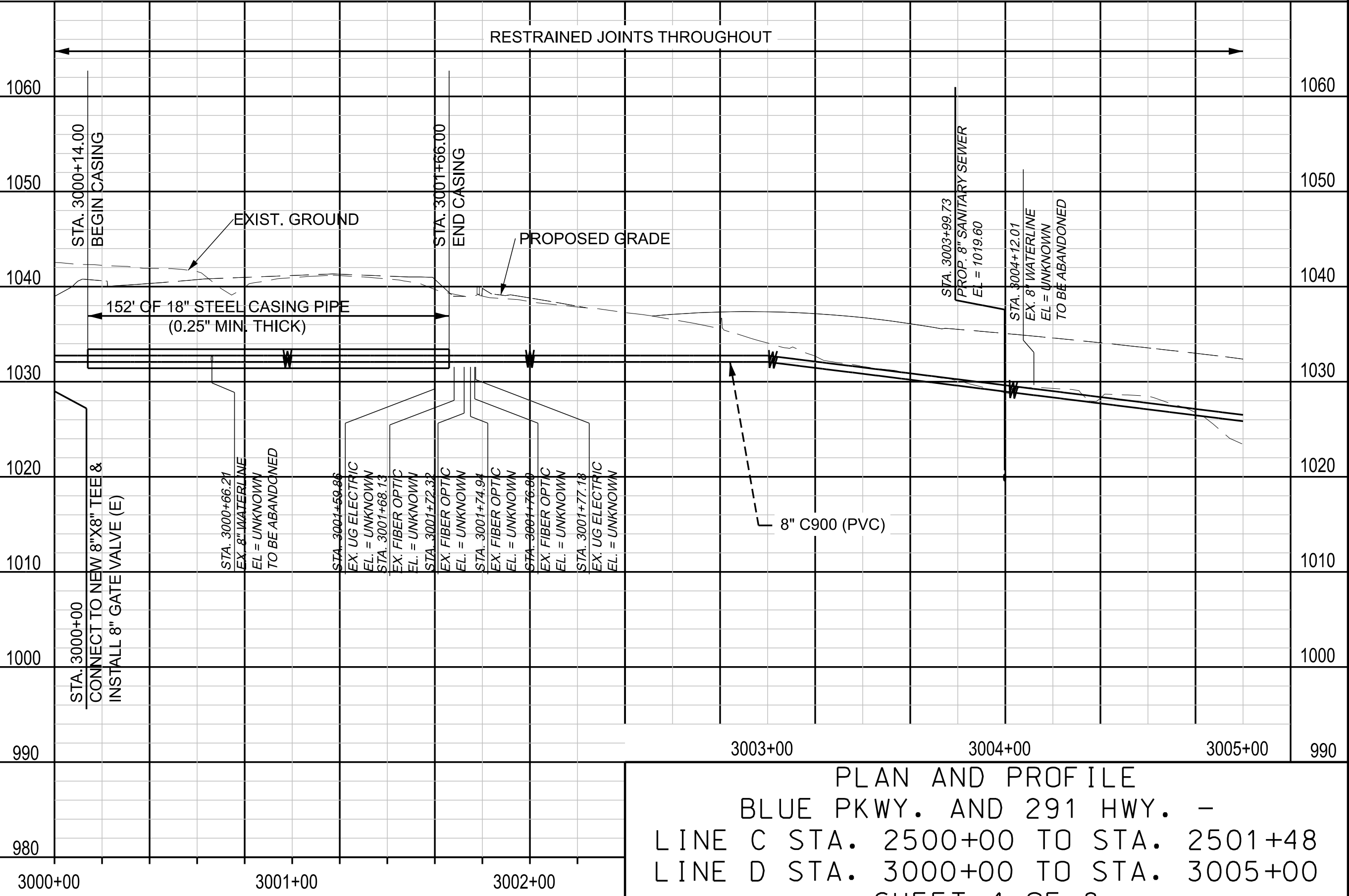
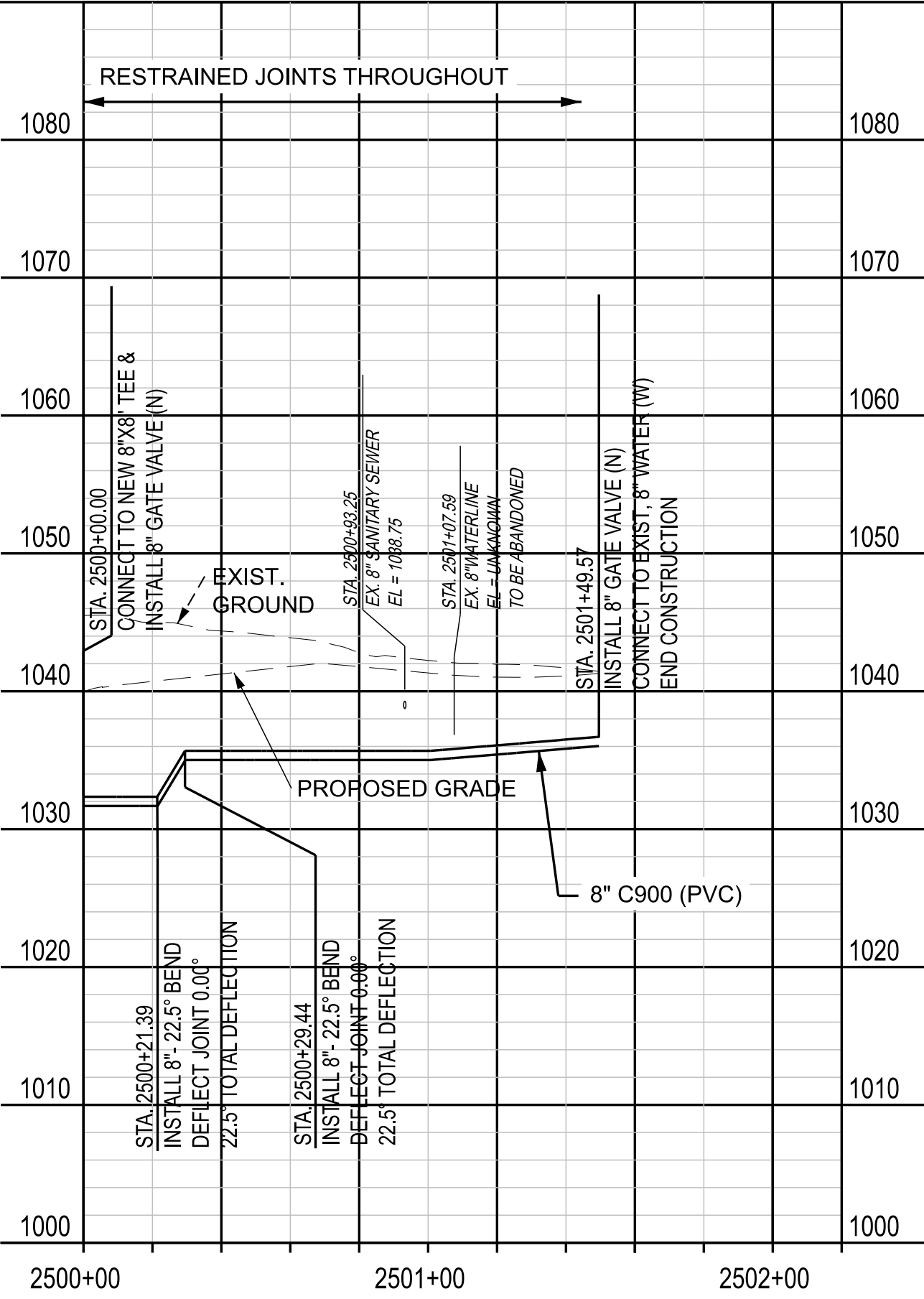
cc: Kent Andersen, Lee's Summit School District

\\VMLX-FILE\Projects\C23_1880\DSN\FDP and Permit\Response 20240528\20240528 LSHS East Parking Lot FDP Response Letter.docx



WATERLINE C PROFILE

WATERLINE D PROFILE



PLAN AND PROFILE
BLUE PKWY. AND 291 HWY. -
LINE C STA. 2500+00 TO STA. 2501+48
LINE D STA. 3000+00 TO STA. 3005+00
SHEET 4 OF 8

DATE PREPARED \$DATES	
ROUTE 50/291	STATE MO
DISTRICT KC	SHEET NO. 147
COUNTY JACKSON	
JOB NO. J4P3196	
CONTRACT ID.	
PROJECT NO.	
BRIDGE NO.	
DESCRIPTION	
DATE	

IF A SEAL IS PRESENT ON THIS SHEET IT HAS BEEN ELECTRONICALLY SEALED AND DATED.

LEE'S SUMMIT
MISSOURI

consult
engineers
inc. planners

Hg CONSULT, INC.
PRO. ENGINEER 2010005873

9111 NE 79th Street, Kansas City, MO 64151 (816) 912-4720

REV.