

corrugated concealed-fastener metal panel (see sample images)

painted brick
/ raked cmu

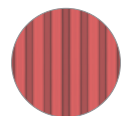
standing seam

illuminated
channel
lettering

polycarbonate
/ similar

hdesigngroup | DIVENTURES OF LEE'S SUMMIT

N (top) and S (bottom) elevations - 1" = 12'



corrugated concealed-fastener metal panel (see sample images)



painted brick
/ raked cmu



standing seam



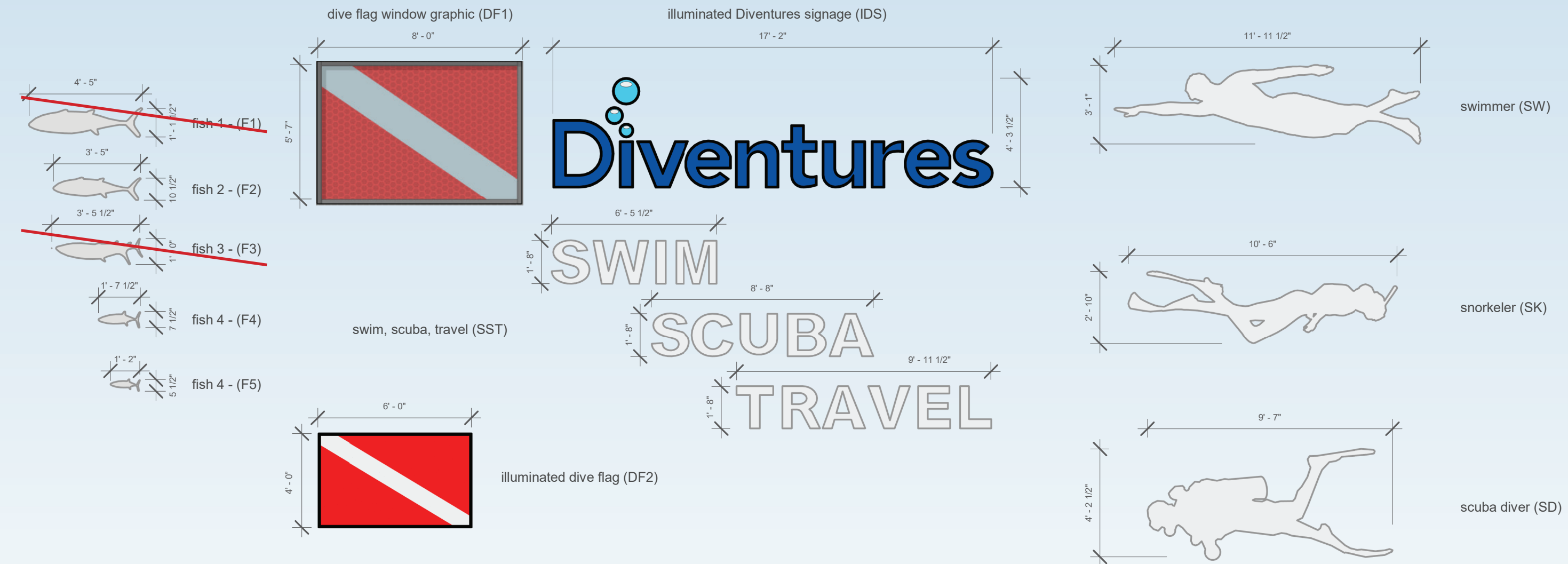
illuminated
channel
lettering



polycarbonate
/ similar

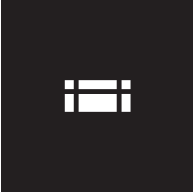
hdesigngroup | DIVENTURES OF LEE'S SUMMIT

E (top) and W (bottom) elevations - 1" = 12'



signage	rectangular area (ft²)	# on N façade	total rectangular area (ft²)	# on E façade	total rectangular area (ft²)	# on S façade	total rectangular area (ft²)	# on W façade	total rectangular area (ft²)
F1	4.97								
F2	2.99	1	2.99						
F3	3.46								
F4	1.02	12	12.24						
F5	0.46	19	8.74						
DF1	43.31					1	44.67		
DF2	24			1	24			1	24
IDS	73.67	1	73.67			1	73.67		
SST	41.8	1	41.8						
SW	36.87	1	36.87						
SN	29.75	1	29.75						
SC	40.33	1	40.33						
total signage area (ft²)			246.39		24		118.34		24
total façade area (ft²)			2463		1877		1940		1877
% signage area			10.00%		1.28%		6.10%		1.28%

*Diventures will not employ monument signage and intends to use the building as the primary signage. The northern facade is designed as a “mural” which includes signage as depicted here but other elements are being considered architectural, not signage. Signage elements are considered, as much as seems reasonable, discrete elements due to the wholistic composition within the “mural” making it difficult to identify areas with the traditional “rectangular area” as signage is defined. It is the request of Diventures for the City of Lee’s Summit to work with hdesigngroup to determine what an appropriate approach to this issue is if it is necessary for the purposes of the PDP or the development. Signage elements shown on elevations match what is shown on this sheet. Renderings vary slightly, and are provided mainly to show more views of the building, and what the building looks like with plantings.

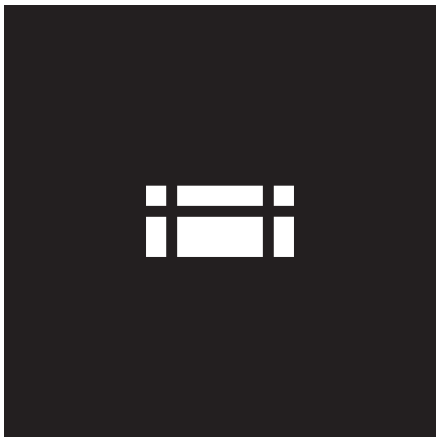












WALL SOLUTIONS

THIS SAMPLE MATERIAL DOCUMENT FOR CORRUGATED METAL PANEL IS PROVIDED AS AN EXAMPLE OF THE DESIGN INTENT OF THE METAL PANEL TO BE USED ON THE PROJECT. THE DESIGN INTENT IS TO PROVIDE A WELL DESIGNED, ARCHITECTURAL PRODUCT THAT DOES NOT LOOK LIKE A WAREHOUSE. PANELS MAY BE METAL BUILDING SUPPLIER SPECIFIC. VARCO PRUDEN HAS NOT BEEN SELECTED AS THE METAL BUILDING SUPPLIER BUT IS ONE OF A HANDFUL OF POTENTIAL PROVIDERS.

TECH FOUR™ & TECH FOUR PLUS™ WALL PANEL

Concealed fastener system provides secure, attractive installation.

Features

- 24 gauge painted G-90 galvanized steel panel
- 16" wide coverage
- Available up to 46' in length
- 2" deep profile ideal for rigid or rolled insulation
- Concealed fasteners and bold architectural lines
- Embossed surface



Benefits

- Engineered for durability and aesthetically pleasing
- Can be easily insulated with a variety of insulation systems
- Embossed surface provides attractive architectural finish

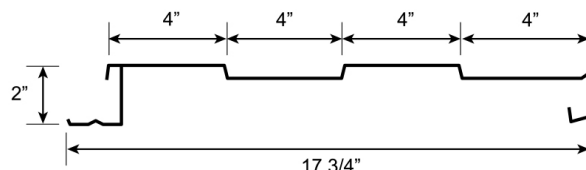
AN ATTRACTIVE WALL PANEL WITH BOLD ARCHITECTURAL LINES AND CONCEALED FASTENERS

A unique architectural wall system that is easy to install featuring concealed fasteners and an attractive, embossed finish. Tech Four offers 2" depth and 16" coverage with 7/16" high by 4" wide alternating "fluted" profile. Available in lengths of up to 46', Tech Four can provide continuous coverage from foundation to eave — eliminating the need for end laps and assuring superior weather tightness. These panels are manufactured in sturdy 24 gauge steel for added strength and erectability.

Tech Four's interlocking fastener locations give the panel a concealed profile with bold architectural lines. A complete trim package including gutter and rake trim, corners and base trim are available to provide an attractive finished appearance. Tech Four panels easily adapt to a variety of insulation options (including batt or blanket) creating a more energy-efficient building envelope.

Tech Four Plus provides an additional energy advantage by providing field-located thermal blocks. The thermal barriers allow increased insulation to be placed behind the wall panel. In addition, these thermal spacers create more room for the recovery of the insulation, thus significantly enhancing the thermal efficiency.

Tech Four Wall Panel Profile



Ready to learn more about this wall system solution?
Talk to your local Varco Pruden Builder today by
visiting varcopruden.com/find-a-builder.