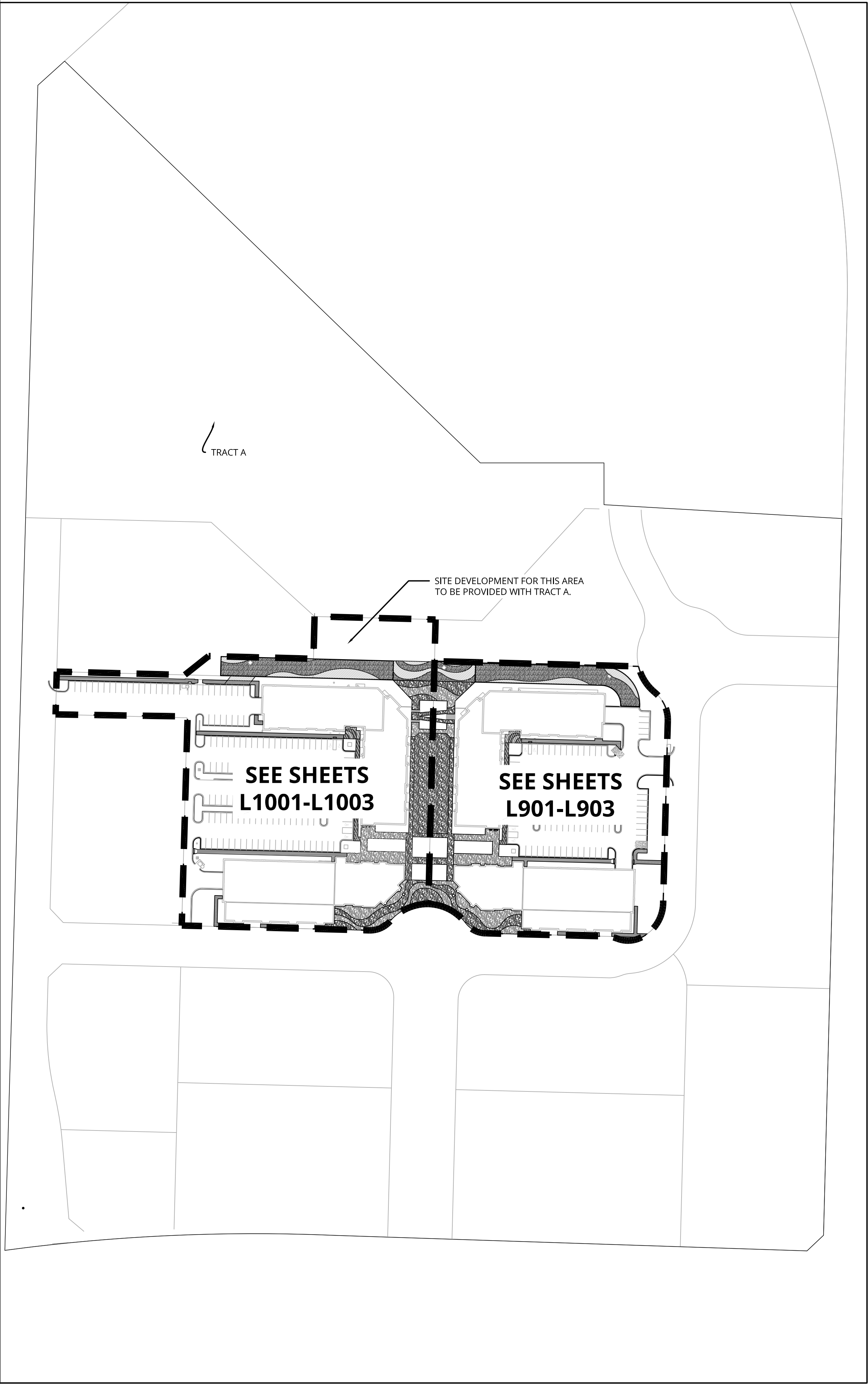


FILE NAME: 24-016 LANDSCAPE PLAN\_CURRENT.DWG  
 FILE PATH: p:\24-016 discovery park the village\pl\1-central plaza\l001 - less summit mo24-016 - cad\current\24-016 landscape plan\_current.dwg  
 PLOTTED ON: Wednesday, April 17, 2024 3:39:04 PM  
 PLOTTED BY: MIKE MCGREW



| LANDSCAPING AND SCREENING REQUIREMENT - THE VILLAGES AT DISCOVERY PARK - LOT 9  |   |                 |              |
|---|---|-----------------|--------------|
| CODE OF ORDINANCES: DIVISION III - LANDSCAPING, BUFFERS AND TREE PROTECTION   |   |                 |              |
| SITE ZONED: CP-2, PROPOSED: PMIX  |   |                 |              |
| TOTAL PROPERTY: 329,794 SF (LOT 10 = 181,882 SF + LOT 9 = 147,912 SF)   |   |                 |              |
| STREET FRONTAGE TREES:  |   | REQUIRED PLANTS | SHOWN PLANTS |
| SEC. 8.790  | ONE TREE PER 30 FEET OF STREET FRONTAGE, PUBLIC OR PRIVATE.   |                 |              |
|   | TREES MAY BE CLUSTERED OR ARRANGED WITHIN THE SETBACK. A MIN. 20 FEET LANDSCAPE STRIP SHALL BE PROVIDED ALONG THE FULL LENGTH OF THE STREET FRONTAGE, EXCEPT WHERE THE BUILDING SETBACK IS LESS THAN 20 FEET. |                 |              |
|   | LOT 9   |                 |              |
|   | TOTAL STREET FRONTAGE = 795 LF  |                 |              |
|   | (795 / 30 = 26.5)   | 27 TREES        | 27 TREES     |
| STREET FRONTAGE SHRUBS:   |   | REQUIRED PLANTS | SHOWN PLANTS |
| SEC. 8.790  | ONE SHRUB PER 20 FEET OF STREET FRONTAGE  |                 |              |
|   | A MINIMUM 20 FEET WIDE LANDSCAPE STRIP SHALL BE PROVIDED ALONG THE FULL LENGTH OF ANY STREET FRONTAGE, EXCEPT WHERE THE BUILDING SETBACK IS LESS THAN 20 FEET.  |                 |              |
|   | LOT 9   |                 |              |
|   | TOTAL STREET FRONTAGE = 795 LF  |                 |              |
|   | (795 / 20 = 39.75)  | 40 SHRUBS       | 40 SHRUBS    |
| PARKING LOT LANDSCAPING:  |   | REQUIRED        | SHOWN        |
| SEC. 8.810  | LANDSCAPE ISLANDS, STRIPS, OR OTHER PLANTING AREA SHALL BE AT LEAST FIVE PERCENT OF THE ENTIRE PARKING AREA.  |                 |              |
|   | LOT 9   |                 |              |
|   | TOTAL PARKING LOT AREA: 34,888 SF   |                 |              |
|   | TOTAL LANDSCAPE ISLAND AREA: 4,370 SF   |                 |              |
|   | (4,370 / 34,888 = 0.1253)   | 5.00%           | 12.53%       |
| OPEN AREAS NOT COVERED WITH OTHER MATERIALS SHALL BE COVERED WITH SOD. GROUND COVER SHALL BE UTILIZED ON ALL SLOPES IN EXCESS OF 3:1 SLOPE. |   |                 |              |

| LANDSCAPING AND SCREENING REQUIREMENT - THE VILLAGES AT DISCOVERY PARK - LOT 10   |   |                 |              |
|---|---|-----------------|--------------|
| CODE OF ORDINANCES: DIVISION III - LANDSCAPING, BUFFERS AND TREE PROTECTION   |   |                 |              |
| SITE ZONED: CP-2, PROPOSED: PMIX  |   |                 |              |
| TOTAL PROPERTY: 329,794 SF (LOT 10 = 181,882 SF + LOT 9 = 147,912 SF)   |   |                 |              |
| STREET FRONTAGE TREES:  |   | REQUIRED PLANTS | SHOWN PLANTS |
| SEC. 8.790  | ONE TREE PER 30 FEET OF STREET FRONTAGE, PUBLIC OR PRIVATE.   |                 |              |
|   | TREES MAY BE CLUSTERED OR ARRANGED WITHIN THE SETBACK. A MIN. 20 FEET LANDSCAPE STRIP SHALL BE PROVIDED ALONG THE FULL LENGTH OF THE STREET FRONTAGE, EXCEPT WHERE THE BUILDING SETBACK IS LESS THAN 20 FEET. |                 |              |
|   | LOT 10  |                 |              |
|   | TOTAL STREET FRONTAGE = 393 LF  |                 |              |
|   | (393 / 30 = 13.1)   | 14 TREES        | 14 TREES     |
| STREET FRONTAGE SHRUBS:   |   | REQUIRED PLANTS | SHOWN PLANTS |
| SEC. 8.790  | ONE SHRUB PER 20 FEET OF STREET FRONTAGE  |                 |              |
|   | A MINIMUM 20 FEET WIDE LANDSCAPE STRIP SHALL BE PROVIDED ALONG THE FULL LENGTH OF ANY STREET FRONTAGE, EXCEPT WHERE THE BUILDING SETBACK IS LESS THAN 20 FEET.  |                 |              |
|   | LOT 10  |                 |              |
|   | TOTAL STREET FRONTAGE = 393 LF  |                 |              |
|   | (393 / 20 = 19.65)  | 20 SHRUBS       | 20 SHRUBS    |
| PARKING LOT LANDSCAPING:  |   | REQUIRED        | SHOWN        |
| SEC. 8.810  | LANDSCAPE ISLANDS, STRIPS, OR OTHER PLANTING AREA SHALL BE AT LEAST FIVE PERCENT OF THE ENTIRE PARKING AREA.  |                 |              |
|   | LOT 10  |                 |              |
|   | TOTAL PARKING LOT AREA: 56,886 SF   |                 |              |
|   | TOTAL LANDSCAPE ISLAND AREA: 8,345 SF   |                 |              |
|   | (8,345 / 56,886 = 0.1467)   | 5.00%           | 14.67%       |
| OPEN AREAS NOT COVERED WITH OTHER MATERIALS SHALL BE COVERED WITH SOD. GROUND COVER SHALL BE UTILIZED ON ALL SLOPES IN EXCESS OF 3:1 SLOPE. |   |                 |              |

| MATERIAL SCHEDULE |   |                            |                |   |              |
|-------------------|---|----------------------------|----------------|---|--------------|
| KEY               | MATERIAL NAME                                     | MANUFACTURER/SUPPLIER      | COLLECTIO<br>N | COMMENTS  | CONTACT      |
| LOT 10            |   |                            |                |   |              |
|                   | PAVING  |                            |                |   |              |
| P-100             | GRAY CONCRETE                                     | N/A                        |                |   |              |
| P-101             | LIGHT DUTY GRAY CONCRETE                          | N/A                        |                |   |              |
| P-110             | INTEGRAL COLOR CONCRETE TYPE A                    | DECORATIVE CONCRETE SUPPLY | N/A            | COLORATION SYSTEM TBD                                   | 913-422-4443 |
| P-111             | INTEGRAL COLOR CONCRETE TYPE B                    | DECORATIVE CONCRETE SUPPLY | N/A            | COLORATION SYSTEM TBD                                   | 913-422-4443 |
| P-120             | INTEGRAL COLOR STAMPED CONCRETE TYPE C            | DECORATIVE CONCRETE SUPPLY | N/A            | COLORATION SYSTEM TBD                                   | 913-422-4443 |
| P-121             | INTEGRAL COLOR STAMPED CONCRETE TYPE D            | DECORATIVE CONCRETE SUPPLY | N/A            | COLORATION SYSTEM TBD                                   | 913-422-4443 |
| P-130             | LIGHT DUTY INTEGRAL COLOR STAMPED CONCRETE TYPE E |                            |                |   |              |
|                   |   |                            |                |   |              |
|                   | SITE FURNISHINGS                                  |                            |                |   |              |
| SF-100            | BENCH-STREETSCAPE                                 | ANOVA                      | AIRI STIX      | 6' CONTOUR BENCH, TEXTURED BLACK COLOR, SURFACE MOUNTED | 314-495-8357 |
| SF-110            | TRASH RECEPTACLE - STREETSCAPE                    | ANOVA                      | AIRI STIX      | 45-GALLON WITH SIDE DOOR, TEXTURED BLACK COLOR          | 314-495-8357 |
| LOT 10            |   |                            |                |   |              |
|                   | PAVING  |                            |                |   |              |
| P-100             | GRAY CONCRETE                                     | N/A                        |                |   |              |
| P-110             | INTEGRAL COLOR CONCRETE TYPE A                    | DECORATIVE CONCRETE SUPPLY | N/A            | COLORATION SYSTEM TBD                                   | 913-422-4443 |
| P-111             | INTEGRAL COLOR CONCRETE TYPE B                    | DECORATIVE CONCRETE SUPPLY | N/A            | COLORATION SYSTEM TBD                                   | 913-422-4443 |
| P-120             | INTEGRAL COLOR STAMPED CONCRETE TYPE C            | DECORATIVE CONCRETE SUPPLY | N/A            | COLORATION SYSTEM TBD                                   | 913-422-4443 |
| P-121             | INTEGRAL COLOR STAMPED CONCRETE TYPE D            | DECORATIVE CONCRETE SUPPLY | N/A            | COLORATION SYSTEM TBD                                   | 913-422-4443 |
|                   |   |                            |                |   |              |
|                   | SITE FURNISHINGS                                  |                            |                |   |              |
| SF-100            | BENCH   | ANOVA                      | AIRI STIX      | 6' CONTOUR BENCH, TEXTURED BLACK COLOR, SURFACE MOUNTED | 314-495-8357 |
| SF-110            | TRASH/RECYCLER RECEPTACLE                         | ANOVA                      | AIRI STIX      | 45-GALLON WITH SIDE DOOR, TEXTURED BLACK COLOR          | 314-495-8357 |

Landscape Architect  
**Landworks Studio**  
 102 S. Cherry Street  
 Olathe, KS 66061  
 p. 913.780.6707  
 www.landworksstudio.com

PROJECT # 24-016  
 THE VILLAGE AT  
 DISCOVERY PARK

current submittal  
**FINAL SITE DEVELOPMENT  
 PLAN**

issued: 04/17/2024

| revisions |     |
|-----------|-----|
| Date      | No. |
|           |     |
|           |     |
|           |     |
|           |     |
|           |     |
|           |     |
|           |     |

professional seal

NOT FOR  
CONSTRUCTION

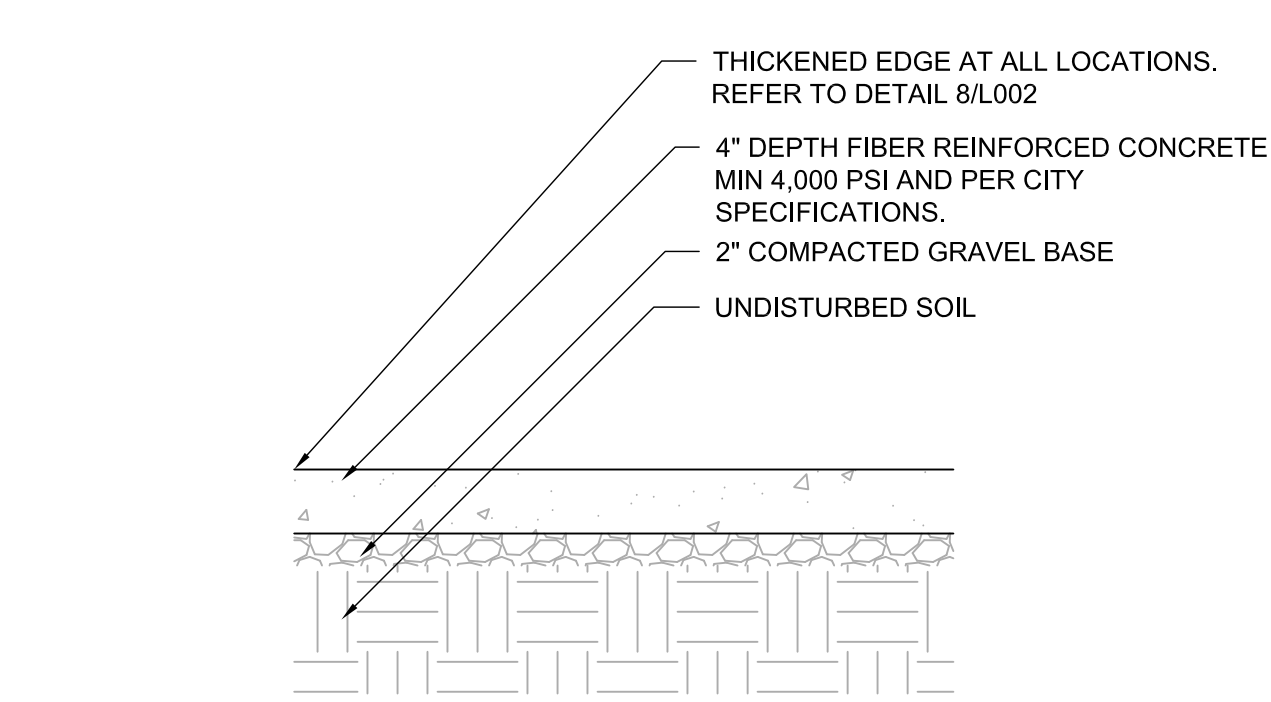
SITE PLAN

L001

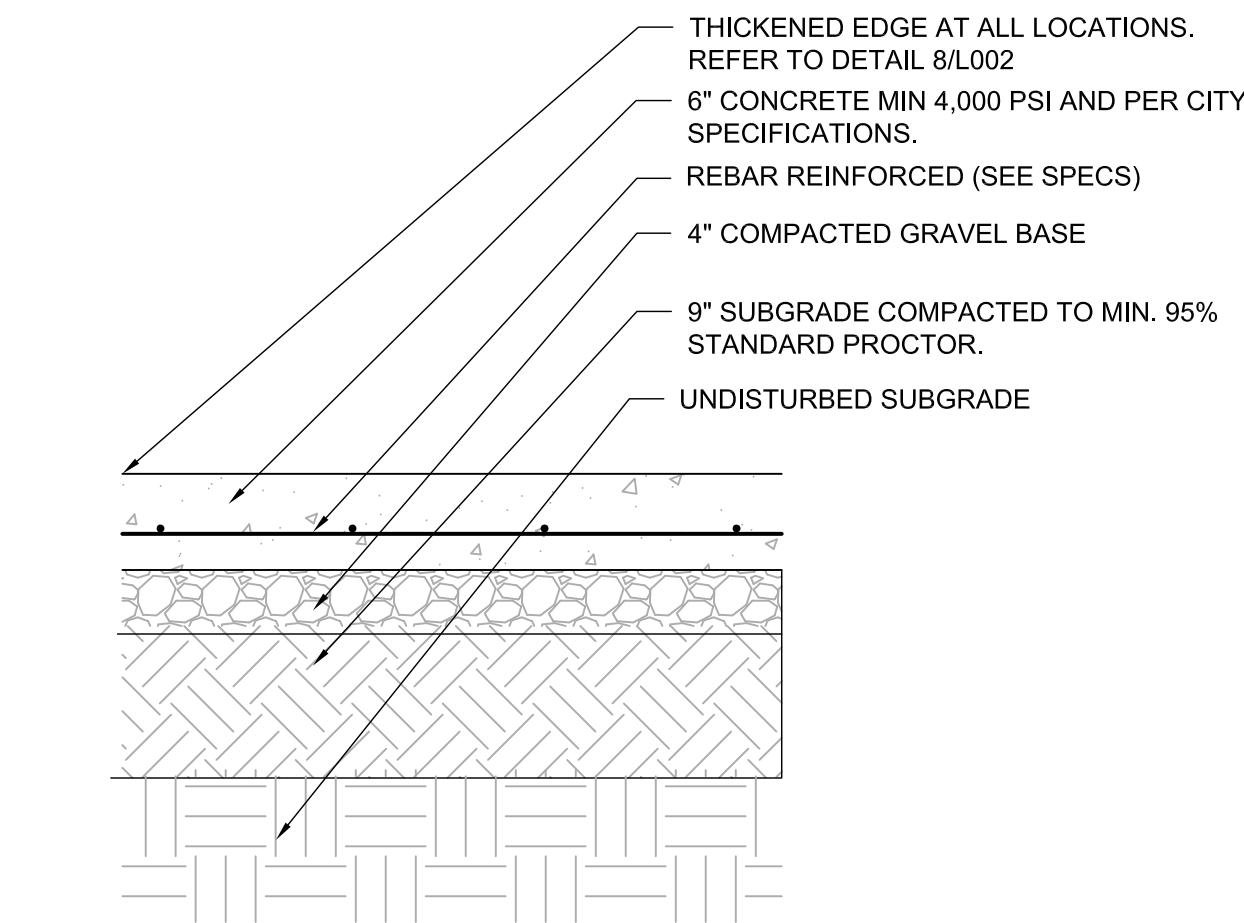
NW COLBERN RD & NE DOUGLAS ST  
LEE'S SUMMIT, MO 64064



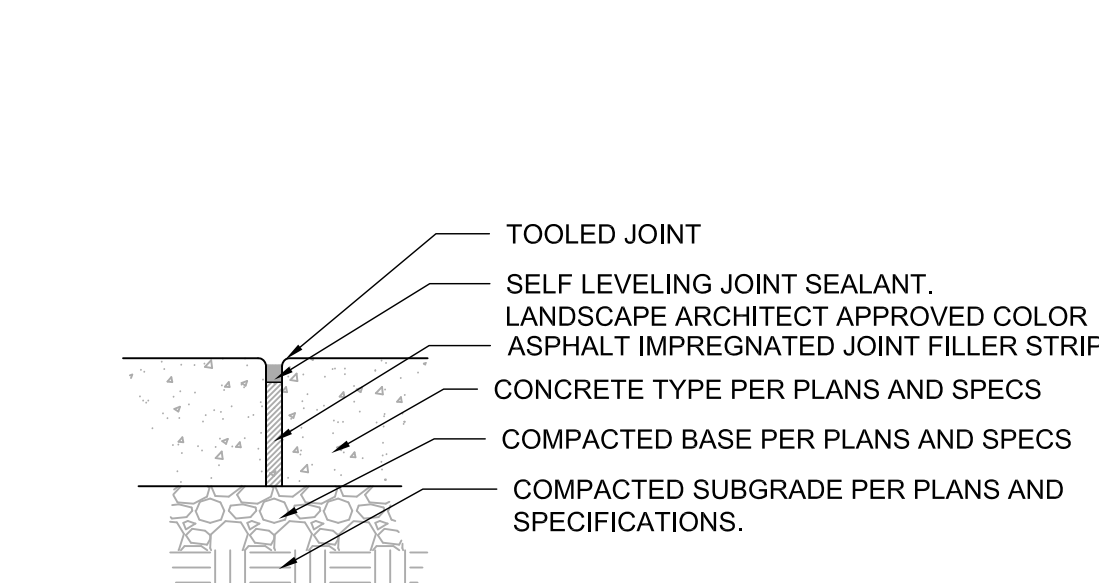
FILE NAME: 24-016 LANDSCAPE PLAN\_CURRENT.DWG  
FILE PLOT: p:\24-016 discovery park the village\pl\1-central plaza\10 - less summit mo\24-016 - cad\current\24-016 landscape plan\_current.dwg  
PLOTTED BY: MIKE MCGREW  
PLOT DATE: Wednesday, April 17, 2024 3:24:54 PM



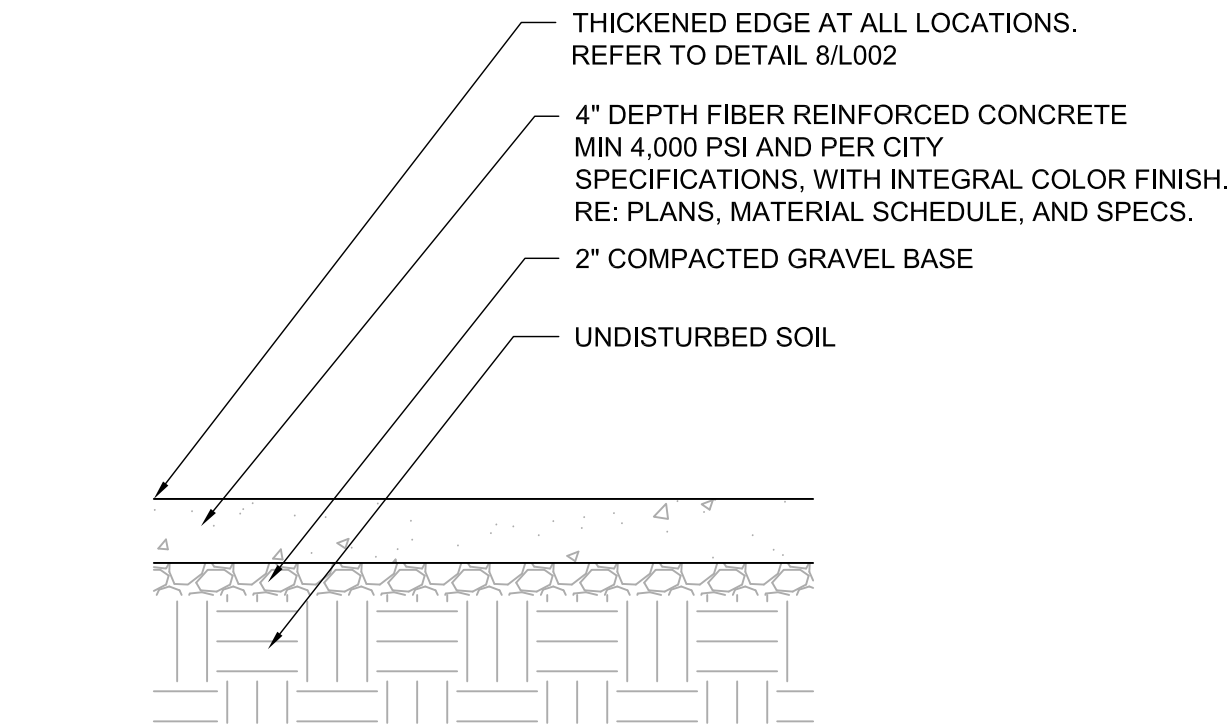
1  
L002  
TYPICAL GRAY CONCRETE  
1" = 1'-0"



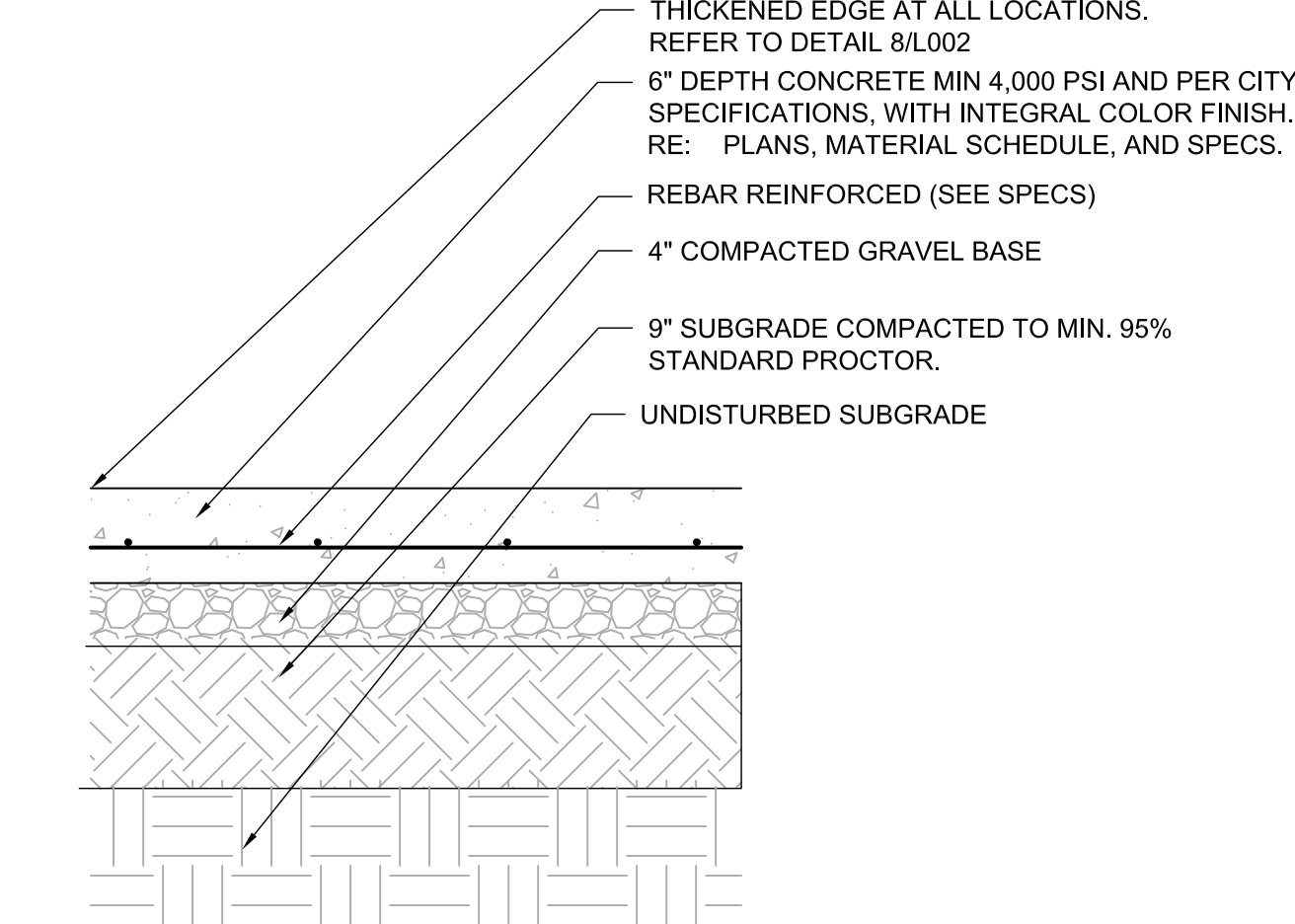
4  
L002  
TYPICAL LIGHT DUTY CONCRETE  
1" = 1'-0"



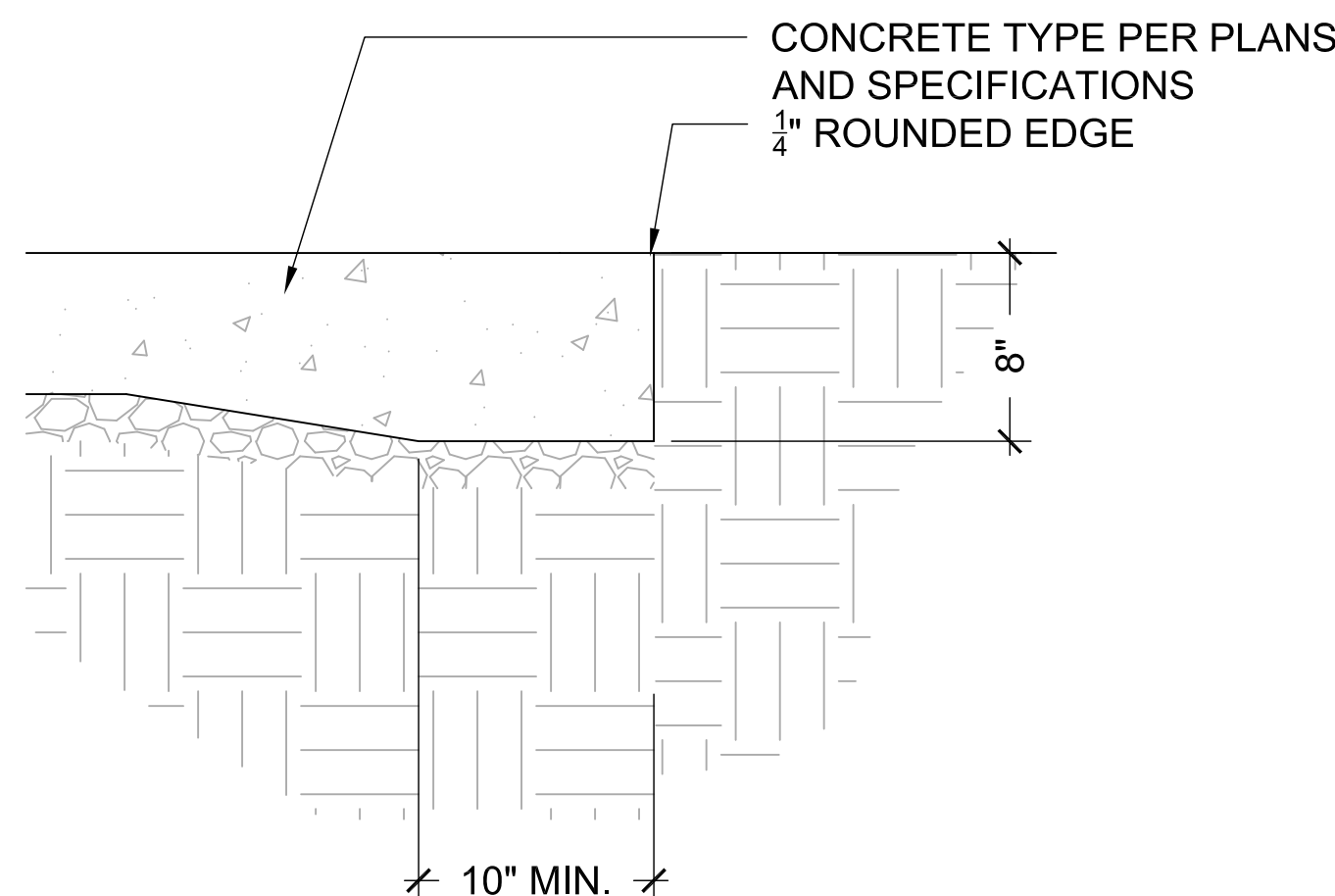
7  
L002  
EXPANSION JOINT  
1" = 1'-0"



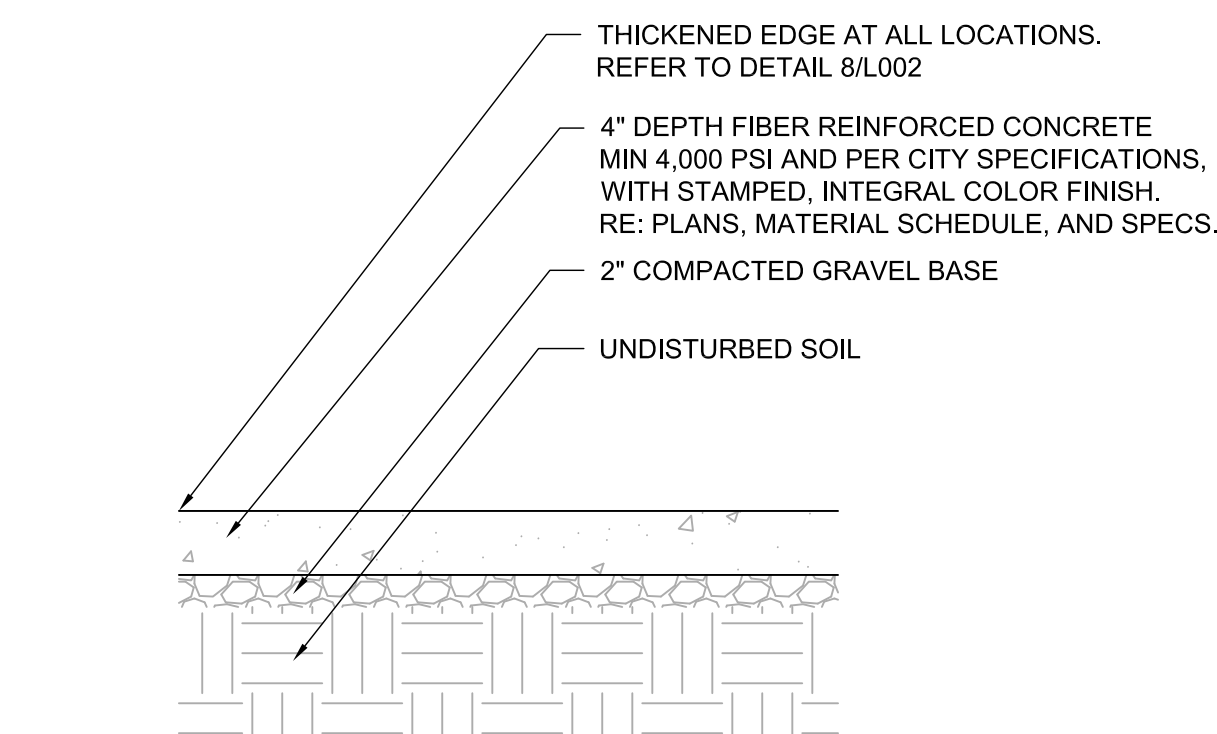
2  
L002  
TYPICAL INTEGRAL COLOR CONCRETE  
1" = 1'-0"



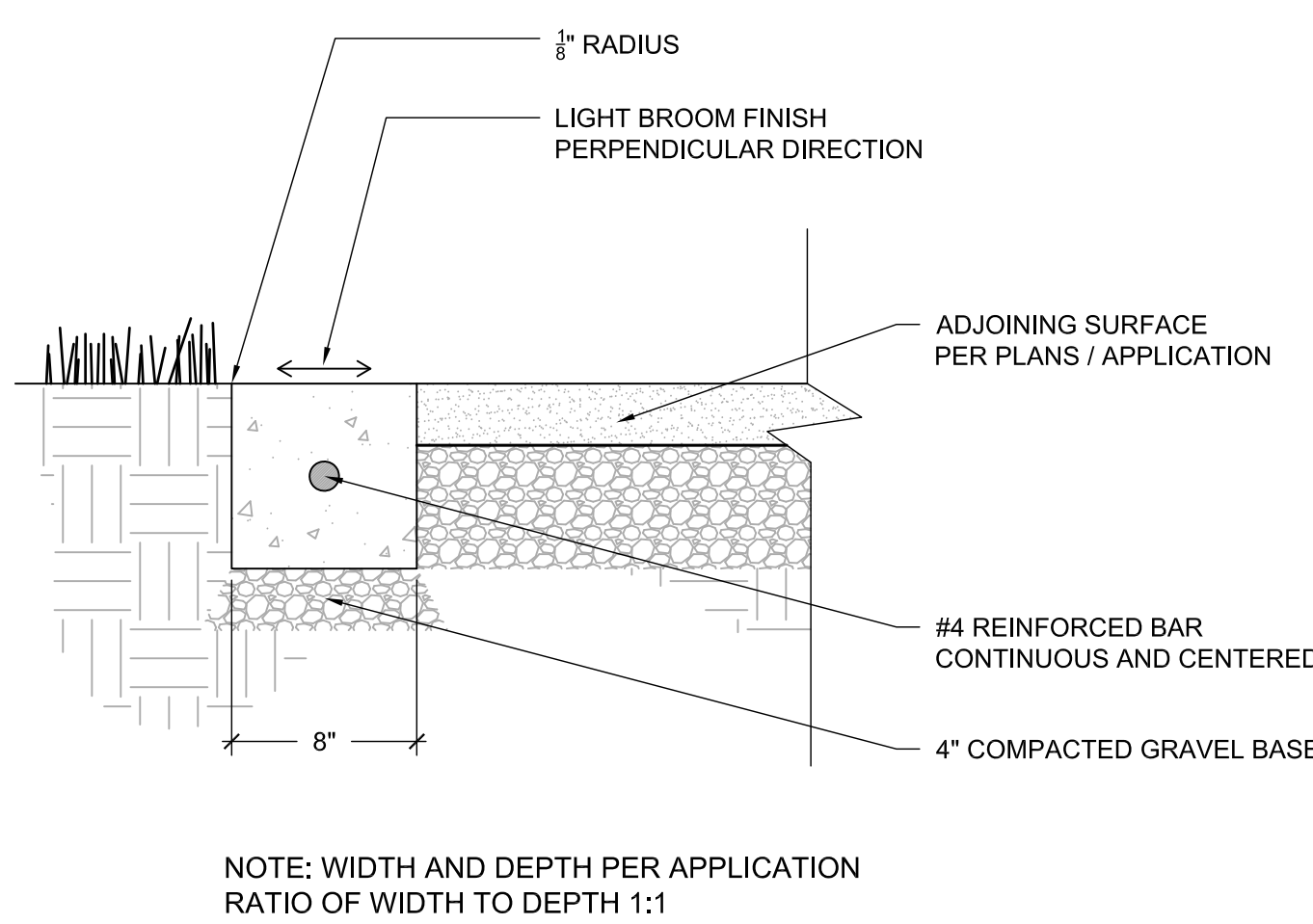
5  
L002  
TYPICAL LIGHT DUTY INTEGRAL COLOR CONCRETE  
1" = 1'-0"



8  
L002  
THICKENED EDGE  
1" = 1'-0"



3  
L002  
TYPICAL STAMPED INTEGRAL COLOR CONCRETE  
1" = 1'-0"



6  
L002  
CONCRETE CURB  
1" = 1'-0"

Landscape Architect  
**Landworks Studio**  
102 S. Cherry Street  
Olathe, KS 66061  
p. 913.780.6707  
www.landworksstudio.com

THE VILLAGE AT  
DISCOVERY PARK

PROJECT # 24-016

NW COLBERN RD & NE DOUGLAS ST  
LEE'S SUMMIT, MO 64064

current submittal  
**FINAL SITE DEVELOPMENT  
PLAN**

issued: 04/17/2024

revisions

| Date | No. |
|------|-----|
|      |     |
|      |     |
|      |     |
|      |     |
|      |     |
|      |     |
|      |     |

professional seal

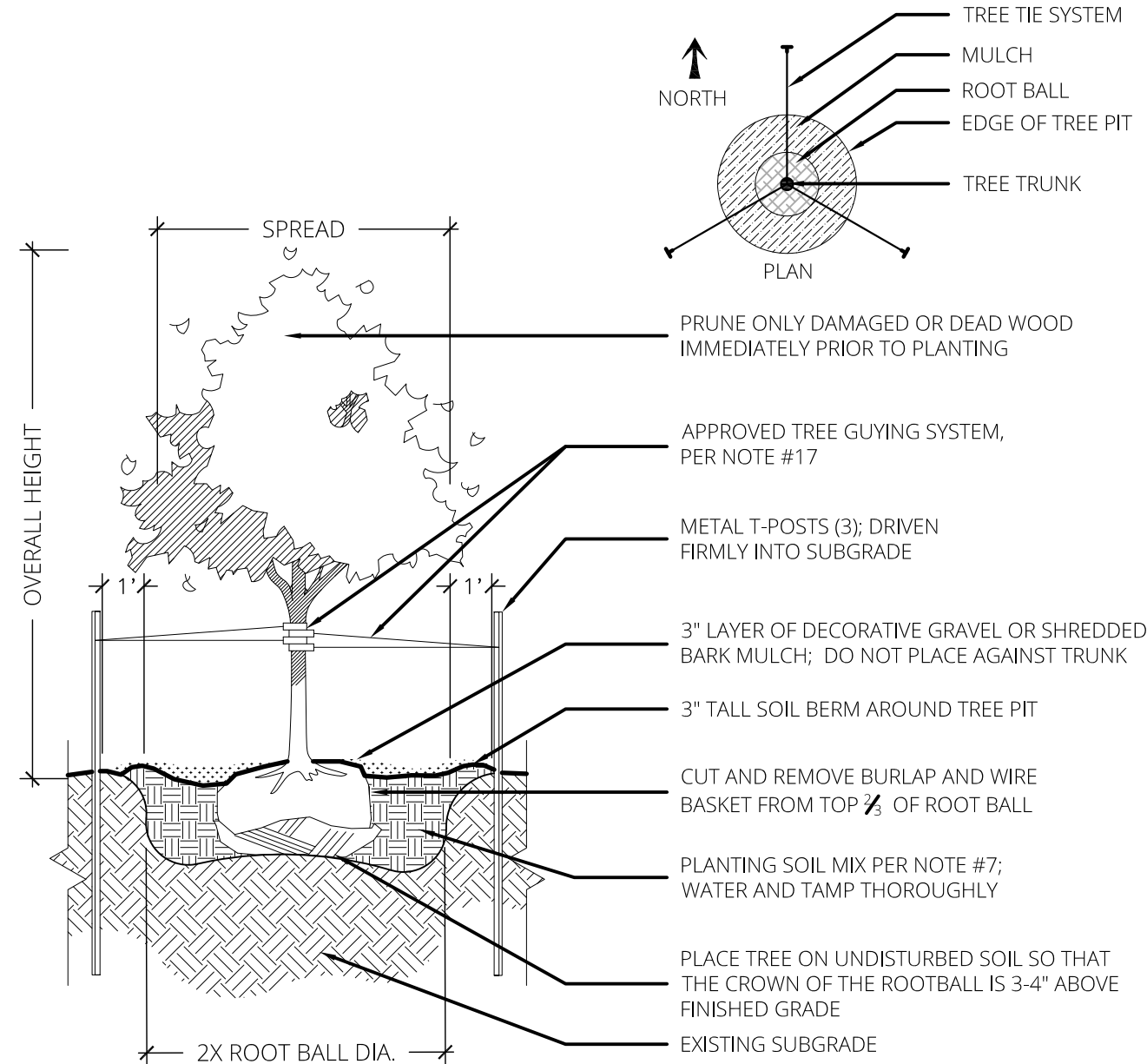
NOT FOR  
CONSTRUCTION

HARDSCAPE DETAILS

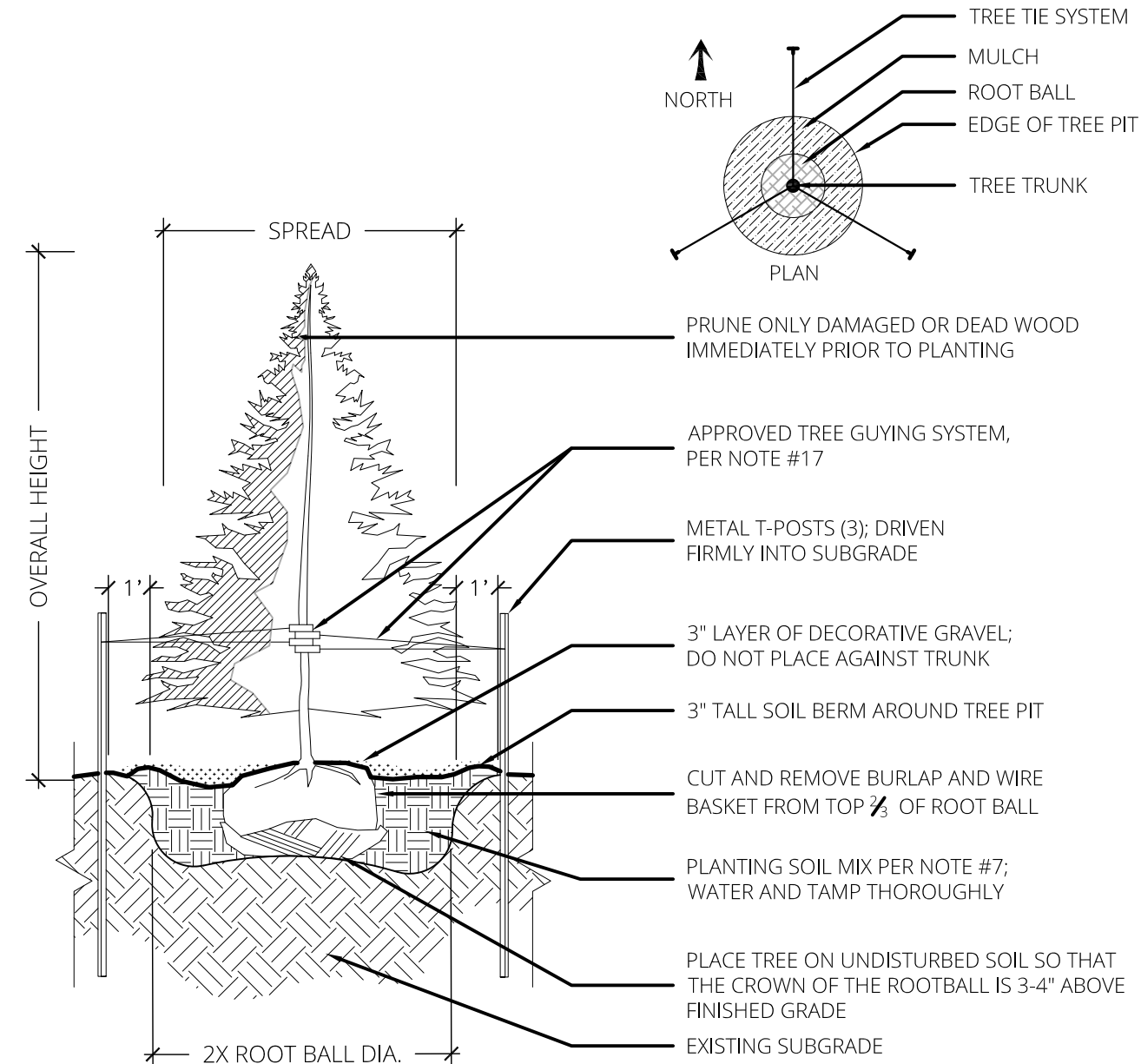
L002



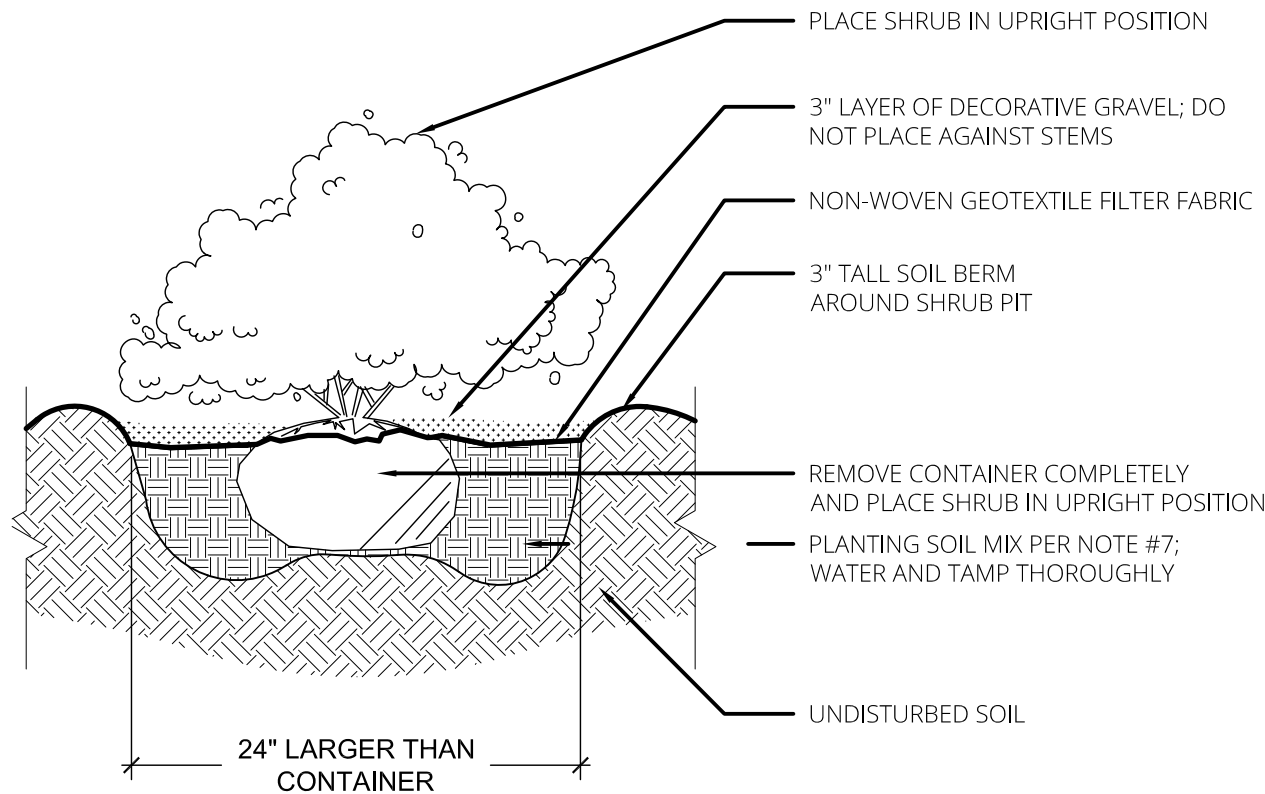
PLOTTED BY: MIKE MCGREW  
 FILE NAME: 24-016 LANDSCAPE PLAN\_CURRENT.DWG  
 FILE PATH: p:\24-016 discovery park the village\pl\1-central plaza\l03 9 10 - less summit mo\24-016\_cad\current\24-016 landscape plan\_current.dwg  
 Wednesday, April 17, 2024 3:25:08 PM  
 cad\24-016\_less summit mo\24-016



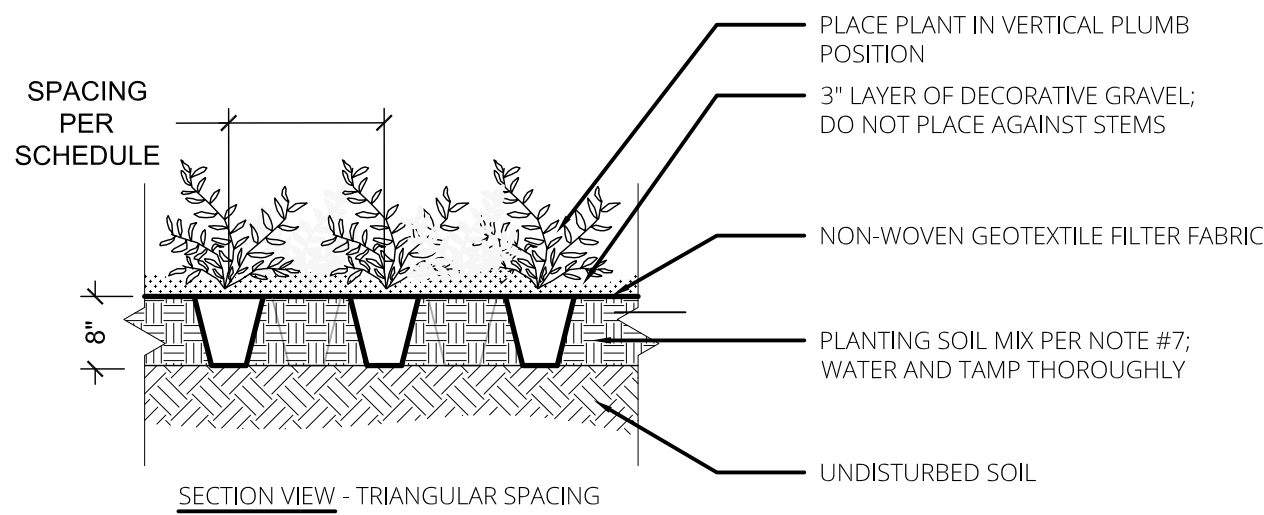
1  
 L003  
 DECIDUOUS TREE PLANTING  
 1/4" = 1'-0"



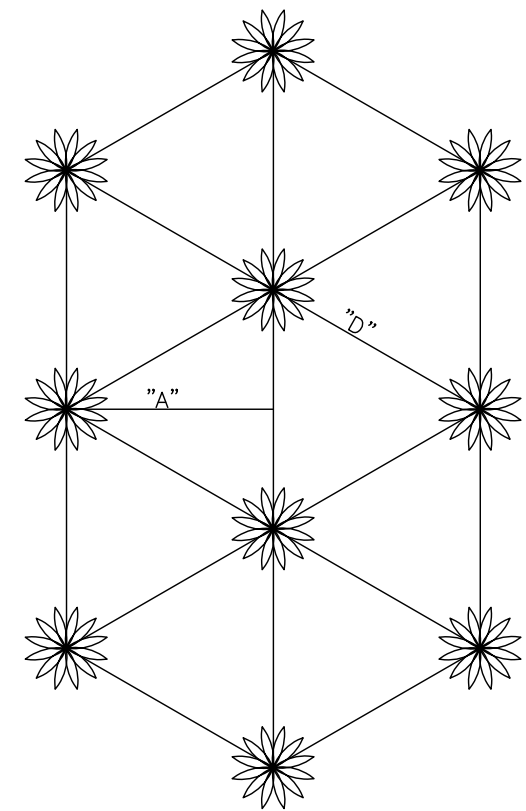
2  
 L003  
 EVERGREEN TREE PLANTING  
 1/4" = 1'-0"



3  
 L003  
 SHRUB PLANTING  
 1/2" = 1'-0"



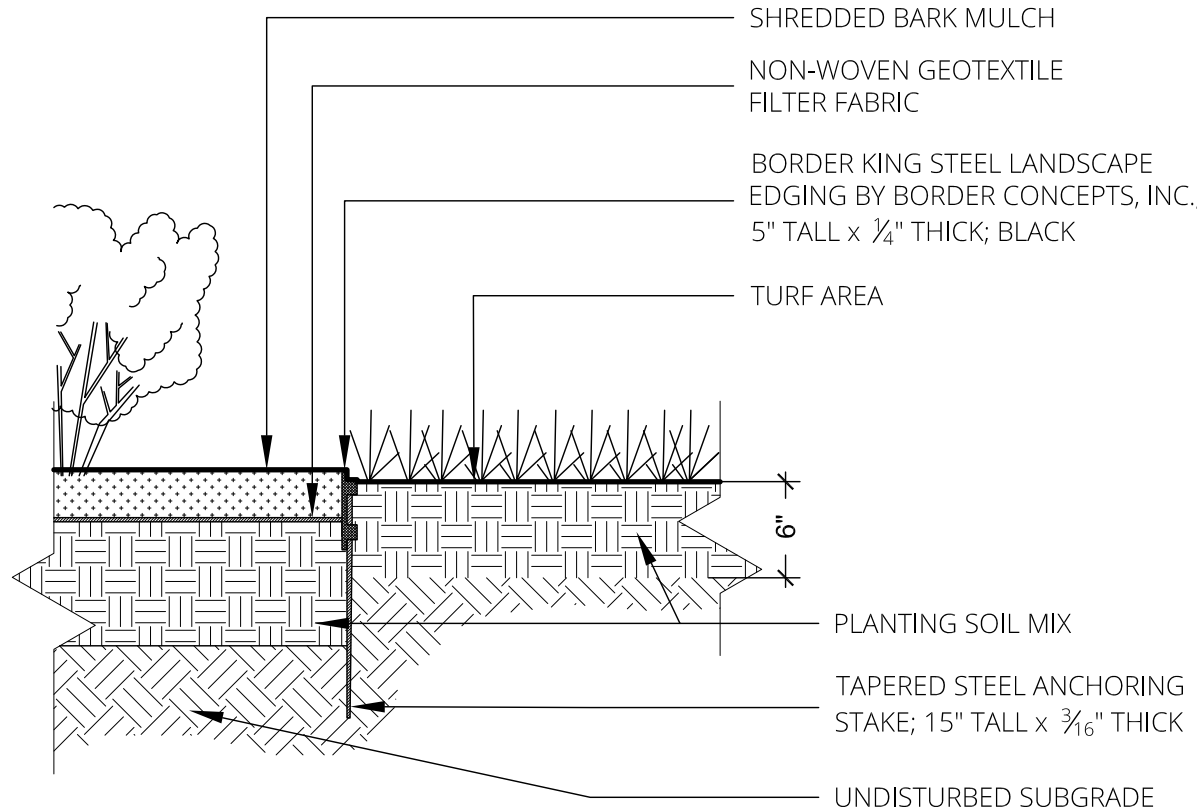
4  
 L003  
 PERENNIAL PLANTING  
 1/2" = 1'-0"



PERENNIAL PLANTINGS, GROUNDCOVERS & BULBS TO BE PLANTED ON TRIANGULAR GRID.

\* SEE PLANT LIST FOR REQUIRED SPACING \*

| SPACING "D" | ROW WIDTH "A" | NO. OF PLANTS/1 S.F. |
|-------------|---------------|----------------------|
| 6" O.C.     | 5.2"          | 4.61                 |
| 8" O.C.     | 6.93"         | 2.60                 |
| 10" O.C.    | 8.66"         | 1.66                 |
| 12" O.C.    | 10.4"         | 1.15                 |
| 15" O.C.    | 13.0"         | .738                 |
| 18" O.C.    | 15.6"         | .512                 |
| 24" O.C.    | 20.8"         | .330                 |



6  
 L003  
 STEEL BED EDGING  
 1" = 1'-0"

LANDSCAPE NOTES:

- CONTRACTOR SHALL LOCATE ALL UTILITIES BEFORE COMMENCING WORK. CONTACT MISSOURI ONE CALL AT 8-1-1 TO FILE A LOCATE REQUEST PRIOR TO ANY EXCAVATION. CONTRACTOR SHALL BE RESPONSIBLE FOR THE REPAIR OF ANY DAMAGE TO UTILITIES RESULTING FROM LANDSCAPE OPERATIONS. ANY UTILITIES SHOWN ON PLAN ARE FOR REFERENCE ONLY AND MAY OR MAY NOT DEPICT THE ACTUAL LOCATION OF SERVICES.
- QUANTITIES OF MATERIALS SHOWN ON THE PLANTING PLAN TAKE PRECEDENCE OVER QUANTITIES SHOWN ON THE PLANT MATERIAL SCHEDULE. LANDSCAPE CONTRACTOR SHALL BE RESPONSIBLE FOR VERIFYING ALL QUANTITIES ON THE PLANTING PLAN PRIOR TO BIDDING.
- NO MATERIAL SUBSTITUTIONS SHALL BE MADE WITHOUT APPROVAL BY THE OWNER'S REPRESENTATIVE. ALTERNATE MATERIALS OF SIMILAR SIZE AND CHARACTER MAY BE CONSIDERED IF SPECIFIED PLANT MATERIALS CANNOT BE OBTAINED. LANDSCAPE ARCHITECT RESERVES THE RIGHT TO REVISE PLANT LIST AS DEEMED NECESSARY.
- REPORT ANY DISCREPANCIES IN THE PLANTING PLAN TO THE OWNER'S REPRESENTATIVE PRIOR TO PURCHASING MATERIALS OR STARTING CONSTRUCTION.
- ALL PLANT MATERIALS SHALL BE PROTECTED FROM THE DRYING ACTION OF THE SUN AND WIND AFTER BEING DUG, WHILE BEING TRANSPORTED, AND WHILE AWAITING PLANTING. BALLS OF PLANTS WHICH CANNOT BE PLANTED IMMEDIATELY SHALL BE PROTECTED FROM DRYING ACTION BY COVERING THEM WITH MOIST MULCH. PERIODICALLY, APPLY WATER TO MULCH-COVERED BALLS TO KEEP MOIST. IF PLANTING SHOULD OCCUR DURING GROWING SEASON, APPLY ANTI-DESSICANT TO LEAVES BEFORE TRANSPORT TO REDUCE LIKELIHOOD OF WINDBURN. REAPPLY ANTI-DESSICANT AFTER PLANTING TO REDUCE TRANSPIRATION.
- ALL PLANT MATERIAL SHALL BE WELL-FORMED AND DEVELOPED IN GOOD CONDITION, HEALTHY AND DISEASE-FREE, AND BE TYPICAL OF THE SPECIES. PLANTS SHALL COMPLY WITH ACCEPTABLE STANDARDS AS SET FORTH IN THE AMERICAN HORT "AMERICAN STANDARD OF NURSERY STOCK."
- PROVIDE AND INSTALL A 3" LAYER OF SHREDDED HARDWOOD BARK MULCH IN PLANTING BEDS AND AROUND ALL TREES NOT OTHERWISE LOCATED WITHIN A SHRUB PLANTING BED. MULCH SHALL CONSIST OF PURE WOOD, BROWN IN COLOR, AND BE FREE OF ALL FOREIGN SUBSTANCES. PROVIDE AND INSTALL PRE-EMERGENT HERBICIDE PRIOR TO MULCH INSTALLATION PER MANUFACTURERS INSTRUCTIONS.
- ALL SHRUB PLANTING BEDS AND TURF AREAS MUST BE SEPARATED WITH STEEL EDGING. PROVIDE AND INSTALL BORDER KING STEEL LANDSCAPE EDGING BY BORDER CONCEPTS, INC., OR APPROVED EQUAL. EDGES SHALL BE IN STRAIGHT LINES OR GENTLE FLOWING CURVES AS SHOWN PER PLAN. SUDDEN CURVES OR SHARP ANGLES SHOULD BE AVOIDED.
- CONTRACTOR SHALL USE AN APPROVED TREE GUYING SYSTEM THAT IS EASILY ADJUSTABLE, STRONG IN ALL WEATHER, AND EASILY ATTACHED AND REMOVED. HOSE AND WIRE ARE NOT ACCEPTABLE FOR STAKED TREES. PRODUCT TO BE ARBOR TIE MANUFACTURED BY DEEP ROOT PARTNERS, OR APPROVED EQUAL.
- TURF SEED SHALL COMPLY WITH U.S. DEPARTMENT OF AGRICULTURE RULES AND REGULATIONS UNDER THE FEDERAL SEED ACT AND BE EQUAL IN QUALITY TO STANDARDS FOR CERTIFIED SEED. SEED SHALL BE A TURF-TYPE FESCUE BLEND CONSISTING OF 90% TURF-TYPE TALL FESCUE, AND 10% KENTUCKY BLUEGRASS. ALL SEEDED AREAS SHALL BE MULCHED WITH STRAW OR HYDROMULCH AT TIME OF INSTALLATION UNTIL SEED HAS ESTABLISHED.
- TURF SOD SHALL BE CERTIFIED TURF GRASS SOD COMPLYING WITH TURFGRASS PRODUCERS INTERNATIONAL'S "GUIDELINE SPECIFICATIONS FOR TURF GRASS SODDING." SOD SHALL BE TURF-TYPE TALL FESCUE HARVESTED FROM A SOD FARM LOCATED WITHIN 100 MILES OF THE PROJECT SITE. SODS SHALL BE WELL ROOTED, 2-YEAR OLD STOCK HARVESTED IN ROLLS AND FERTILIZED 2-3 WEEKS PRIOR TO CUTTING. ALL SOD SHALL BE MACHINE CUT AND VIGOROUSLY GROWING (NOT DORMANT). MAXIMUM TIME FROM STRIPPING TO PLANTING SHALL BE 24 HOURS.
- REMOVE ALL RUBBISH, EQUIPMENT, AND MATERIAL AND LEAVE THE AREA IN A NEAT, CLEAN CONDITION EACH DAY. MAINTAIN PAVED AREAS UTILIZED FOR HAULING EQUIPMENT AND MATERIALS BY OTHER TRADES IN A CLEAN AND UNOBSTRUCTED CONDITION AT ALL TIMES. REMOVE SOIL OR DIRT THAT ACCUMULATES DUE TO PLANTING OPERATIONS EACH DAY.
- AT THE COMPLETION OF PLANTING OPERATIONS ALL PLANTS SHALL BE INSPECTED BY THE OWNER'S REPRESENTATIVE.
- CONTRACTOR SHALL REPLACE IMMEDIATELY ANY PLANTS NOT IN HEALTHY AND VIGOROUS CONDITION AT THAT TIME AT NO EXPENSE TO THE OWNER. ANY PLANT NOT IN HEALTHY CONDITION AFTER ONE FULL YEAR FROM THE DATE OF FINAL ACCEPTANCE SHALL BE REPLACED FREE OF CHARGE TO THE OWNER.
- OWNER'S REPRESENTATIVE RESERVES THE RIGHT TO REJECT AT ANY TIME OR PLACE PRIOR TO FINAL ACCEPTANCE OF WORK, ANY AND ALL PLANTS WHICH, IN THEIR OPINION, FAIL TO MEET THESE SPECIFICATION REQUIREMENTS.
- CONTRACTOR SHALL GUARANTEE TREES, SHRUBS, AND TURF FOR ONE CALENDAR YEAR FOLLOWING PROVISIONAL ACCEPTANCE OF THE OVERALL PROJECT. DURING THE GUARANTEE PERIOD, PLANTS THAT DIE DUE TO NATURAL CAUSES OR THAT ARE UNHEALTHY OR UNSIGHTLY IN CONDITION, SHALL BE REPLACED BY THE CONTRACTOR. PLANTS USED FOR THE REPLACEMENT SHALL BE OF THE SAME VARIETY AND SIZE AS ORIGINALLY SPECIFIED IN THE PLANT SCHEDULE. REPLACEMENTS SHALL BE MADE WITHIN ONE WEEK OF REQUEST PENDING FAVORABLE SEASONAL PLANTING CONDITIONS. GUARANTEE WILL NOT BE ENFORCED SHOULD THE PLANT MATERIAL DIE DUE TO VANDALISM, OVER OR UNDER WATERING BY THE OWNER, IMPROPER MAINTENANCE PROCEDURES CARRIED OUT BY THE OWNER, OVER FERTILIZATION, ACTS NOT RELATED TO CONTRACTUAL RESPONSIBILITIES OF CONTRACTOR, OR SIMILAR CIRCUMSTANCES BEYOND THE CONTROL OF THE CONTRACTOR.
- CONTRACTOR SHALL EXCAVATE 24" MINIMUM BELOW THE PROPOSED SUBGRADE UNDER ALL SHRUB PLANTING BEDS AND INSTALL THE SPECIFIED PLANTING SOIL MIX. CONTRACTOR SHALL EXCAVATE 6" MINIMUM BELOW THE PROPOSED SUBGRADE UNDER ALL TURF AREAS AND INSTALL THE SPECIFIED PLANTING SOIL MIX. REFER TO SPECIFICATIONS.

Landscape Architect  
**Landworks Studio**  
 102 S. Cherry Street  
 Olathe, KS 66061  
 p. 913.780.6707  
 www.landworksstudio.com

THE VILLAGE AT  
 DISCOVERY PARK

PROJECT # 24-016

NW COLBERN RD & NE DOUGLAS ST  
 LEE'S SUMMIT, MO 64064

current submittal  
**FINAL SITE DEVELOPMENT PLAN**

issued: 04/17/2024

revisions

| Date | No. |
|------|-----|
|      |     |
|      |     |
|      |     |
|      |     |
|      |     |
|      |     |
|      |     |

professional seal

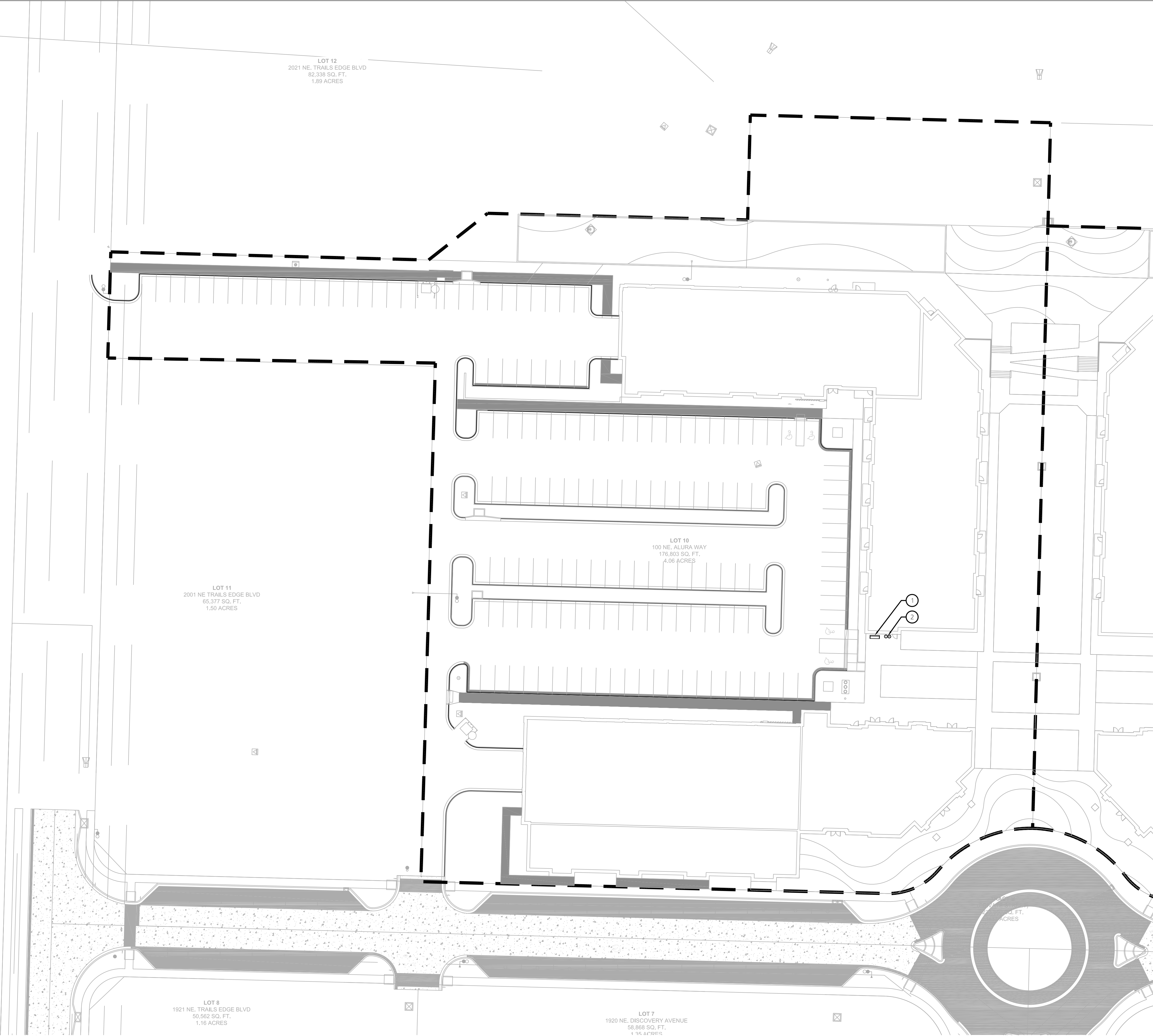
NOT FOR  
 CONSTRUCTION

LANDSCAPE DETAILS

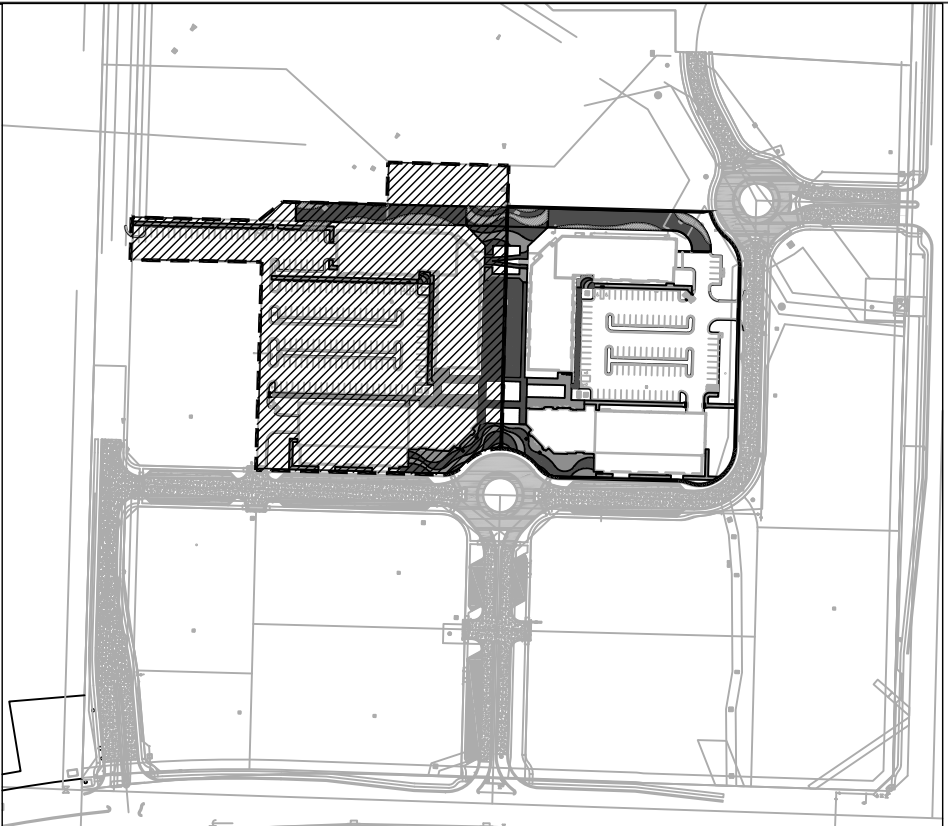
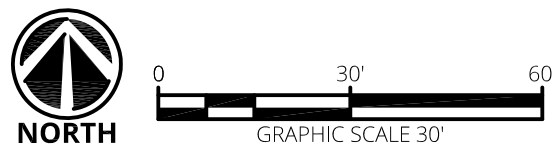
L003



FILE NAME: 24-016 LANDSCAPE PLAN\_CURRENT.DWG  
PLOTTED ON: Wednesday, April 17, 2024 3:28:59 PM  
PLOT BY: MIKE MCGREW  
File Path: p:\24-016 discovery park the village\pl\1-central plaza lots 9 10 - less summit mo\24-016\_cad\current\24-016 landscape plan\_current.dwg



1 LOT 10 SITE FURNISHINGS PLAN  
L1001  
1" = 30'-0"



KEYMAP

SITE FURNISHING NOTES

- 1 PROVIDE AND INSTALL BENCH (SF-100). REFER TO SPECIFICATIONS
- 2 PROVIDE AND INSTALL TRASH/RECYCLER RECEPTACLE (SF-110). REFER TO SPECIFICATIONS

Landscape Architect  
**Landworks Studio**  
102 S. Cherry Street  
Olathe, KS 66061  
p. 913.780.6707  
www.landworksstudio.com

THE VILLAGE AT  
DISCOVERY PARK

PROJECT # 24-016

NW COLBERN RD & NE DOUGLAS ST  
LEE'S SUMMIT, MO 64064

current submittal  
**FINAL SITE DEVELOPMENT  
PLAN**

issued: 04/17/2024

revisions

| Date | No. |
|------|-----|
|      |     |
|      |     |
|      |     |
|      |     |
|      |     |
|      |     |
|      |     |

professional seal

NOT FOR  
CONSTRUCTION

**LOT 10 SITE FURNISHINGS  
PLAN**

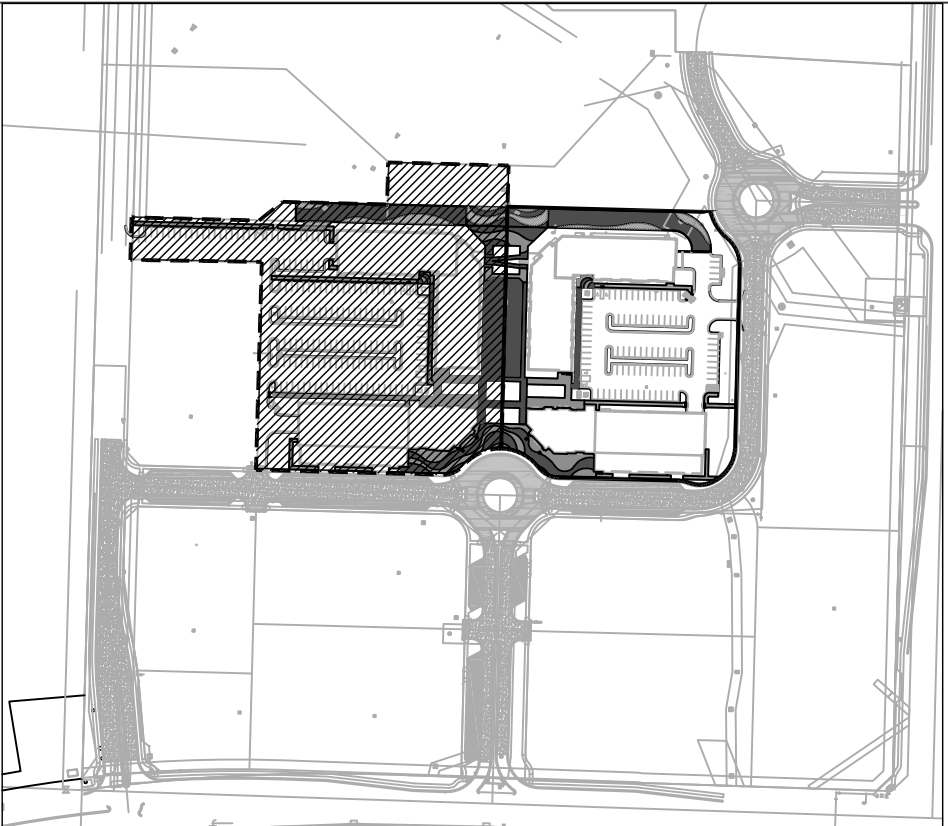
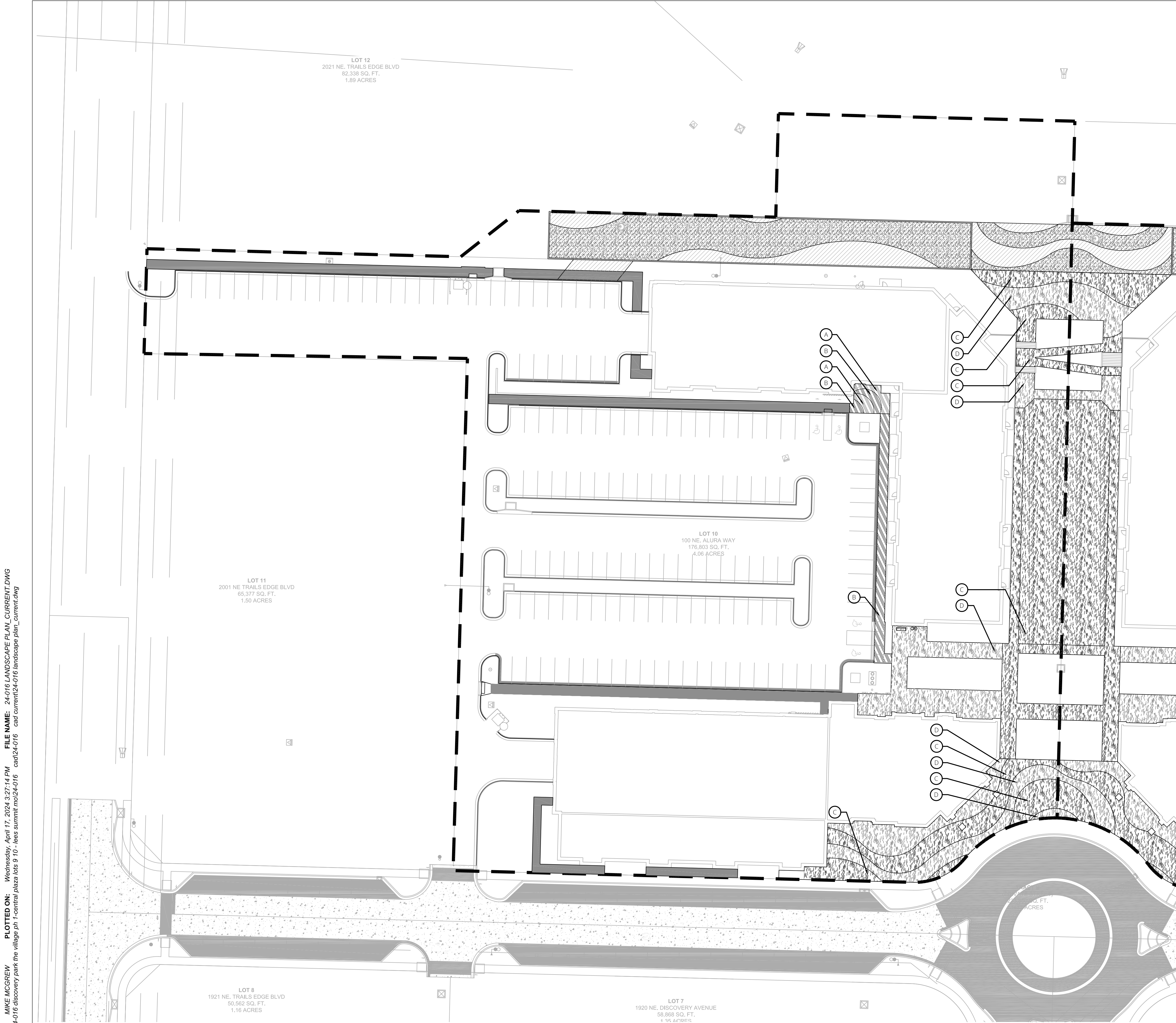
**L1001**



PLOTTED BY: MIKE MCGREW  
FILE NAME: 24-016 LANDSCAPE PLAN\_CURRENT.DWG  
FILE PATH: p:\24-016 discovery park the village\pl\central plaza\l08 9 10 - less summit mo\24-016\_cad\current\24-016 landscape plan\_current.dwg

PLOTTED ON: Wednesday, April 17, 2024 3:27:14 PM  
PLOT DATE: p:\24-016 discovery park the village\pl\central plaza\l08 9 10 - less summit mo\24-016\_cad\current\24-016 landscape plan\_current.dwg

LOT 10 HARDSCAPE PLAN  
1" = 30'-0"



#### HARDSCAPE LEGEND

|  |                                    |
|--|------------------------------------|
|  | GRAY CONCRETE                      |
|  | INTEGRAL COLOR CONCRETE            |
|  | STAMPED INTEGRAL COLOR CONCRETE    |
|  | LIGHT DUTY CONCRETE                |
|  | LIGHT DUTY INTEGRAL COLOR CONCRETE |

#### HARDSCAPE PLAN NOTES

| (1.0) PAVEMENTS / SURFACING            | DETAIL |
|--|--------|
| 1.1 GRAY CONCRETE                      | 1/L002 |
| 1.2 INTEGRAL COLOR CONCRETE            | 2/L002 |
| 1.3 STAMPED INTEGRAL COLOR CONCRETE    | 3/L002 |
| 1.4 LIGHT DUTY CONCRETE                | 4/L002 |
| 1.5 LIGHT DUTY INTEGRAL COLOR CONCRETE |        |

#### CONCRETE FINISH NOTES

- (A) CONSTRUCT INTEGRAL COLOR CONCRETE. CONCRETE COLOR TYPE "A"
- (B) CONSTRUCT INTEGRAL COLOR CONCRETE. CONCRETE COLOR TYPE "B"
- (C) CONSTRUCT STAMPED INTEGRAL COLOR CONCRETE. CONCRETE FINISH TYPE "C"
- (D) CONSTRUCT STAMPED INTEGRAL COLOR CONCRETE. CONCRETE FINISH TYPE "D"

Landscape Architect  
**Landworks Studio**  
102 S. Cherry Street  
Olathe, KS 66061  
p. 913.780.6707  
www.landworksstudio.com

THE VILLAGE AT  
DISCOVERY PARK

PROJECT # 24-016

NW COLBERN RD & NE DOUGLAS ST  
LEE'S SUMMIT, MO 64064

current submittal  
**FINAL SITE DEVELOPMENT  
PLAN**

issued: 04/17/2024

revisions

| Date | No. |
|------|-----|
|      |     |
|      |     |
|      |     |
|      |     |
|      |     |
|      |     |
|      |     |

professional seal

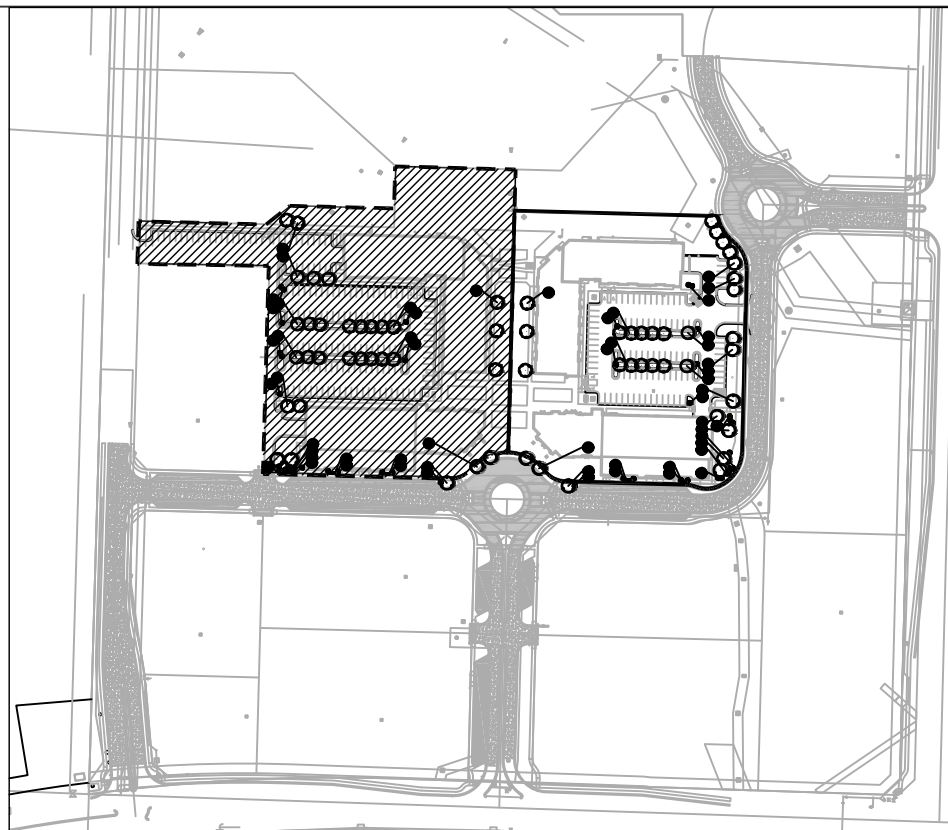
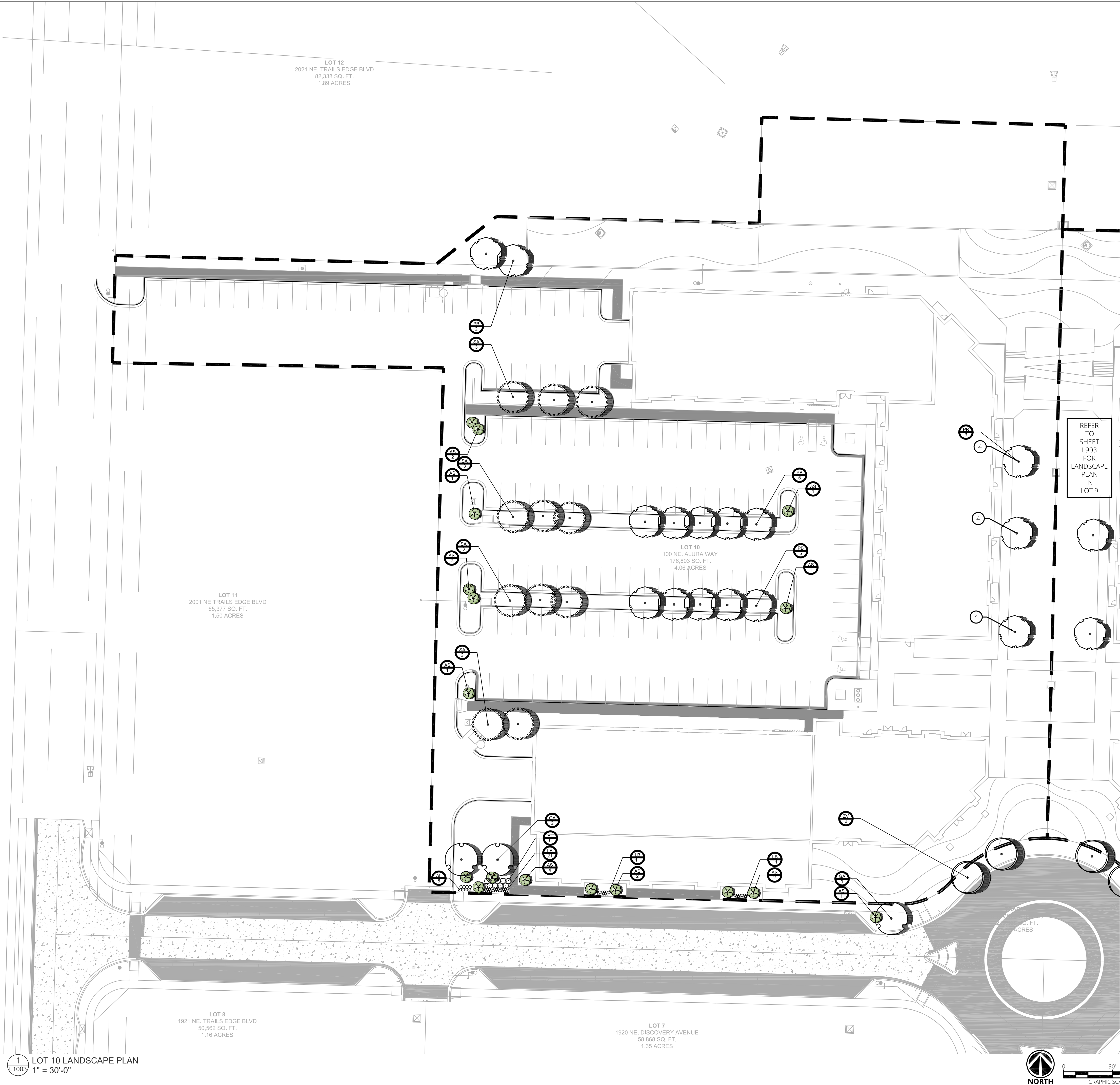
NOT FOR  
CONSTRUCTION

LOT 10 HARDSCAPE PLAN

**L1002**



FILE NAME: 24-016 LANDSCAPE PLAN\_CURRENT.DWG  
FILE PATH: p:\24-016 discovery park the village\pl\1-central plaza\l03 9 10 - less summit mo\24-016 - cad\current\24-016 landscape plan\_current.dwg  
PLOTTED ON: Wednesday, April 17, 2024 4:31:34 PM  
PLOTTER: MIKE MCGREW



| PLANT SCHEDULE      |      |     |   |        |           |
|---------------------|------|-----|---|--------|-----------|
| SYMBOL              | CODE | QTY | COMMON / BOTANICAL NAME   | CONT   | CAL       |
| TREES               |      |     |   |        |           |
|                     | GA   | 13  | GOLDEN HONEY LOCUST / GLEDITSIA TRIACANTHOS INERMIS 'AUREA'           | 15 GAL |           |
|                     | PB   | 28  | BLOODGOOD LONDON PLANE TREE / PLATANUS X ACERIFOLIA 'BLOODGOOD'       | 15 GAL |           |
|                     | SA   | 14  | WHITE COMMON LILAC / SYRINGA VULGARIS 'ALBA'                          | 15 GAL |           |
|                     | ZV   | 8   | VILLAGE GREEN JAPANESE ZELKOVA / ZELKOVA SERRATA 'VILLAGE GREEN'      | 15 GAL |           |
| DECIDUOUS TREES     |      |     |   |        |           |
|                     | AS   | 37  | SUGAR CONE SUGAR MAPLE / ACER SACCHARUM 'SUGAR CONE'                  | B & B  | 1.75" CAL |
| SHRUBS & PERENNIALS |      |     |   |        |           |
|                     | AL   | 16  | LOW SCAPE MOUND® BLACK CHOKEBERRY / ARONIA MELANOCARPA 'UCONNAM165'   | 5 GAL  |           |
|                     | LB   | 65  | BIG BLUE LILYTURF / LIRIOPE MUSCARI 'BIG BLUE'                        | 1 GAL  |           |
|                     | PL   | 18  | LITTLE DEVIL™ DWARF NINEBARK / PHYSOCARPUS OPULIFOLIUS 'LITTLE DEVIL' | 5 GAL  |           |

PLANT SCHEDULE FOR BOTH LOTS 9 AND 10 SHOWN. SHALL BE REVISED DURING DESIGN DEVELOPMENT.

LANDSCAPE PLAN NOTES

- 1 PROVIDE AND INSTALL PLANTING BED. REFER TO LANDSCAPE PLANS AND SPECIFICATIONS.
- 2 PROVIDE AND INSTALL STEEL BED EDGE. REFER TO DTL 6/L003.
- 3 AREA TO BE SODDED WITH TURF-TYPE TALL FESCUE. REFER TO SPECIFICATIONS.
- 4 TREES TO BE INSTALLED IN TREE WELL. REFER TO SPECIFICATIONS.

NOTES:

- ALL WORK DESCRIBED IN THE LANDSCAPE PLAN SHALL COMPLY WITH ASSOCIATED CODES, ORDINANCES, AND PLAN REPORT REQUIREMENTS BY THE CITY OF LEE'S SUMMIT, MISSOURI AND THE PROPERTY MASTER PLAN UNLESS SPECIFICALLY MODIFIED BY AGREEMENT BETWEEN THE OWNER AND CITY OF LEE'S SUMMIT, MO., IN WHICH CASE THE MODIFIED AGREEMENT REQUIREMENTS SHALL TAKE PRECEDENCE.
- IRRIGATION SYSTEM TO BE INSTALLED.
- REFER TO SHEET L003 FOR ADDITIONAL LANDSCAPE NOTES AND DETAILS.

Landscape Architect

**Landworks Studio**  
102 S. Cherry Street  
Olathe, KS 66061  
p. 913.780.6707  
www.landworksstudio.com

THE VILLAGE AT  
DISCOVERY PARK

PROJECT # 24-016

current submittal  
**FINAL SITE DEVELOPMENT  
PLAN**

issued: 04/17/2024

revisions

| Date | No. |
|------|-----|
|      |     |
|      |     |
|      |     |
|      |     |
|      |     |
|      |     |
|      |     |

professional seal

NOT FOR  
CONSTRUCTION

LOT 10 PLANTING PLAN

**L1003**