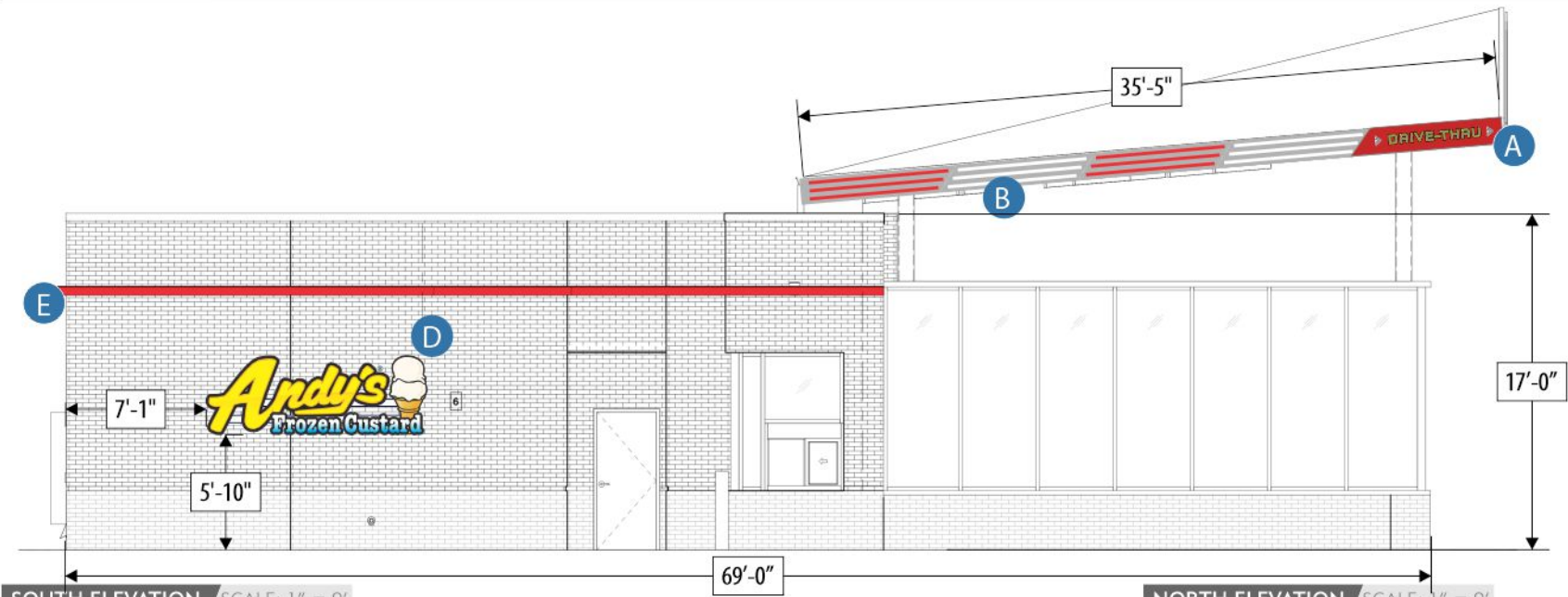


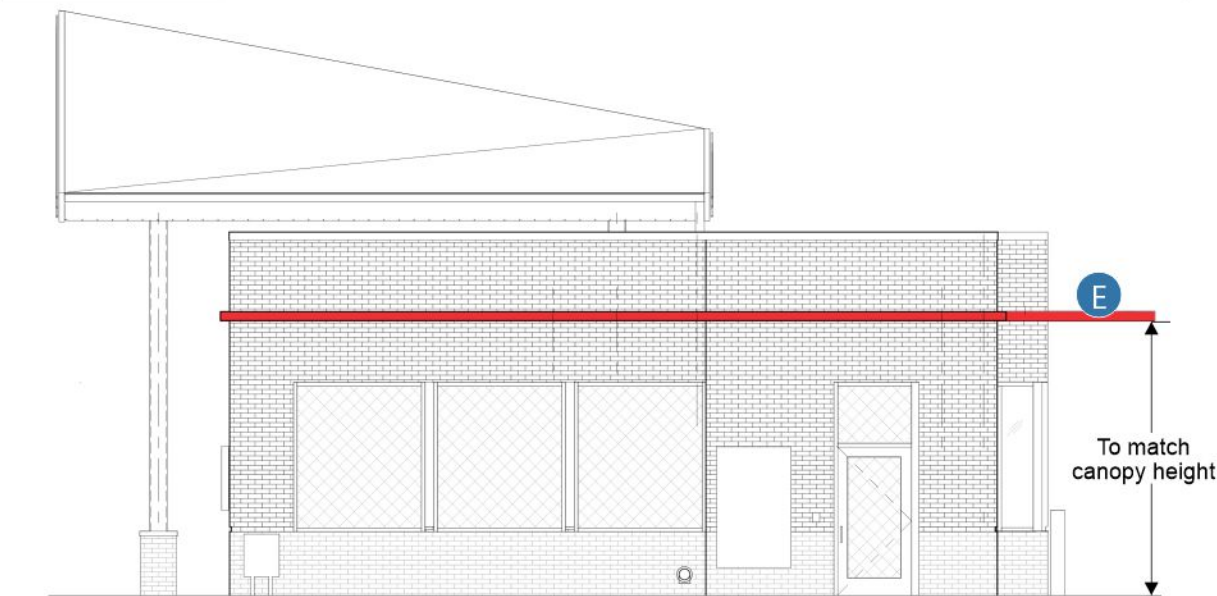
PINNACLE SIGN
GROUP
VISUAL BRANDING THAT MAKES A DIFFERENCE



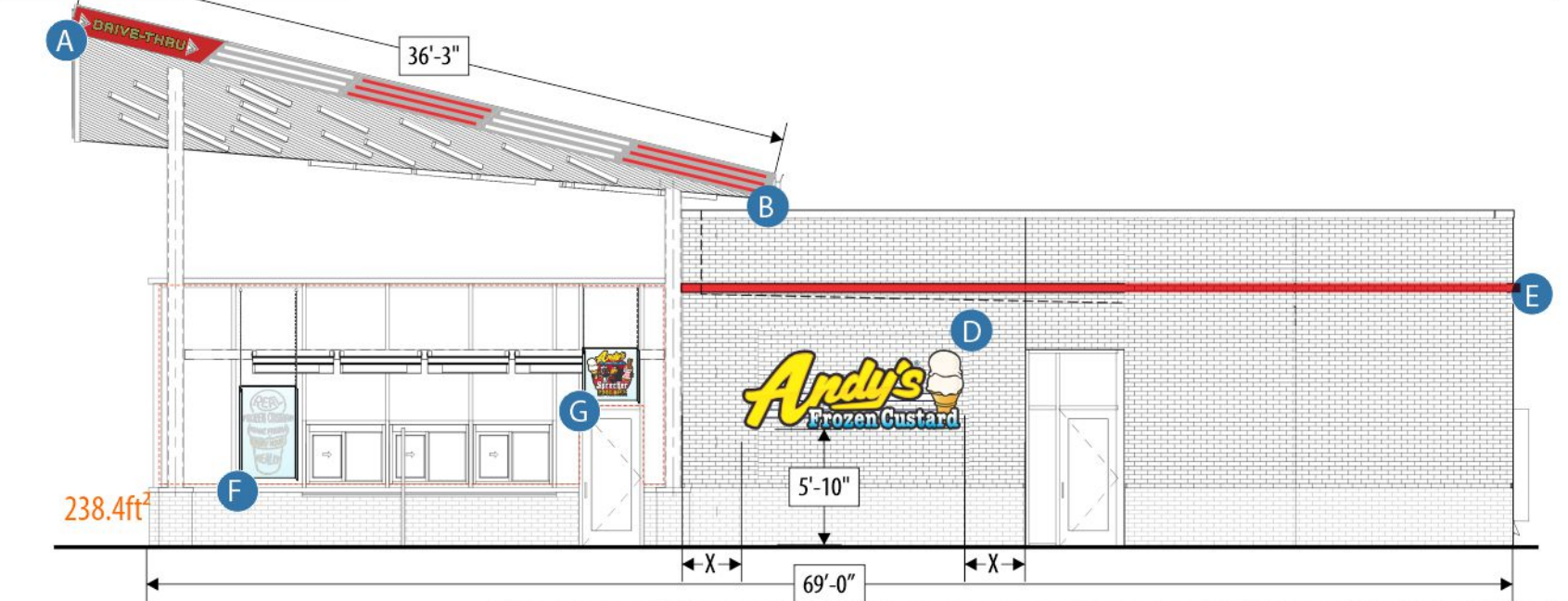
LEE'S SUMMIT, MO



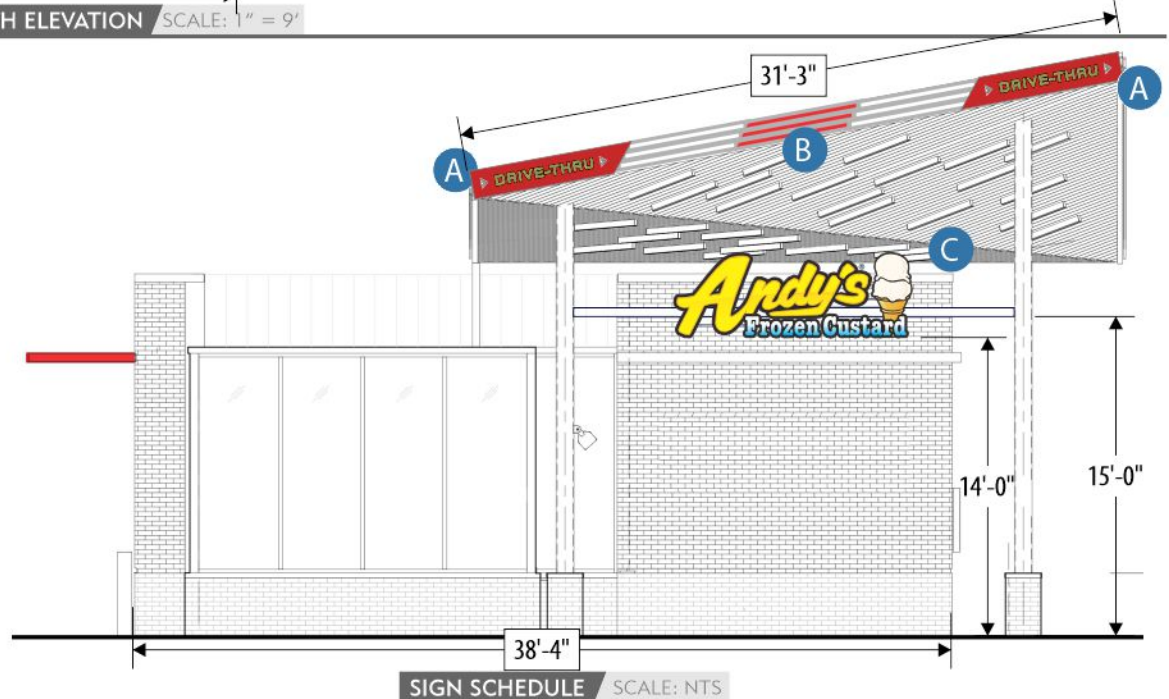
SOUTH ELEVATION SCALE: 1" = 9'



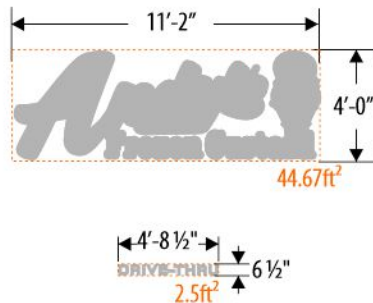
WEST ELEVATION SCALE: 1" = 9'



NORTH ELEVATION SCALE: 1" = 9'



SIGN SCHEDULE SCALE: NTS



ELECTRICAL INFO

PERMITTING INFO

SIZE AND PLACEMENT

ANDY'S FROZEN CUSTARD

CUSTOMER

0825-22-ELEV-1

AS SHOWN

DRAWING NUMBER

ELEVATION

03.15.24

DATE REVISED

DEREK CROUCH

TIM SWAIM

DESIGNER

PROJECT MANAGER

LEE SUMMIT, MO

LOCATION

SCOPE OF WORK

BUILDING SIGNAGE

- A** LED Illuminated Corner Fascia Cabinets (AFC-OPT-FASC-1)
 - B** Reverse Channel Illuminated Fascia Cabinets (AFC-OPT-FASC-3)
 - C** Channel Cabinets (0312-24-EWAL-1)
 - D** Channel Cabinets (0312-24-EWAL-2)
 - E** LED Illuminated Light Accent Band (0312-24-BAND-1)
- WINDOW SIGNAGE
- F** Neon "Made Fresh Hourly" Sign (AFC-STND-IWAL-2)
 - G** Neon "Sprecher" Sign (AFC-STND-IWAL-3)

EXTERIOR FT²: EAST

| | |
|--------------------------------|-------|
| FACADE AREA Ft² | 1017 |
| ALLOWABLE ft²: x 10% | 101.7 |
| CHANNEL CABINETS: 51.5ft² x 1 | 51.5 |
| DRIVE THRU LETTERS: 2.5ft² x 1 | 2.5 |
| TOTAL SIGNAGE ft²: | 54 |

EXTERIOR FT²: WEST

| | |
|--------------------------------|-------|
| FACADE AREA Ft² | 1017 |
| ALLOWABLE ft²: x 10% | 101.7 |
| CHANNEL CABINETS: 51.5ft² x 1 | 51.5 |
| DRIVE THRU LETTERS: 2.5ft² x 1 | 2.5 |
| TOTAL SIGNAGE ft²: | 54 |

EXTERIOR FT²: NORTH

| | |
|--------------------------------|------|
| FACADE AREA Ft² | 565 |
| ALLOWABLE ft²: x 10% | 56.5 |
| CHANNEL CABINETS: 51.5ft² x 1 | 51.5 |
| DRIVE THRU LETTERS: 2.5ft² x 2 | 5 |
| TOTAL SIGNAGE ft²: | 56.5 |

- H

DIRECTIONAL SIGN (AFC-STND-DIRE-1)

3' Height; 2-Sided Illuminated Directional
- I

1-SIDED MENU BOARD (AFC-STND-MENU-1-SS)

3 Over 3 Panel Standard Menu; "Order at Window" Sign Panel w/ Bracket; Located at Drive-Thru
- J

2-SIDED MENU BOARD (AFC-STND-MENU-1-DS)

3 Over 3 Panel Standard Menu; Located at Patio
- K

CLEARANCE SIGN (AFC-STND-BAR-1)

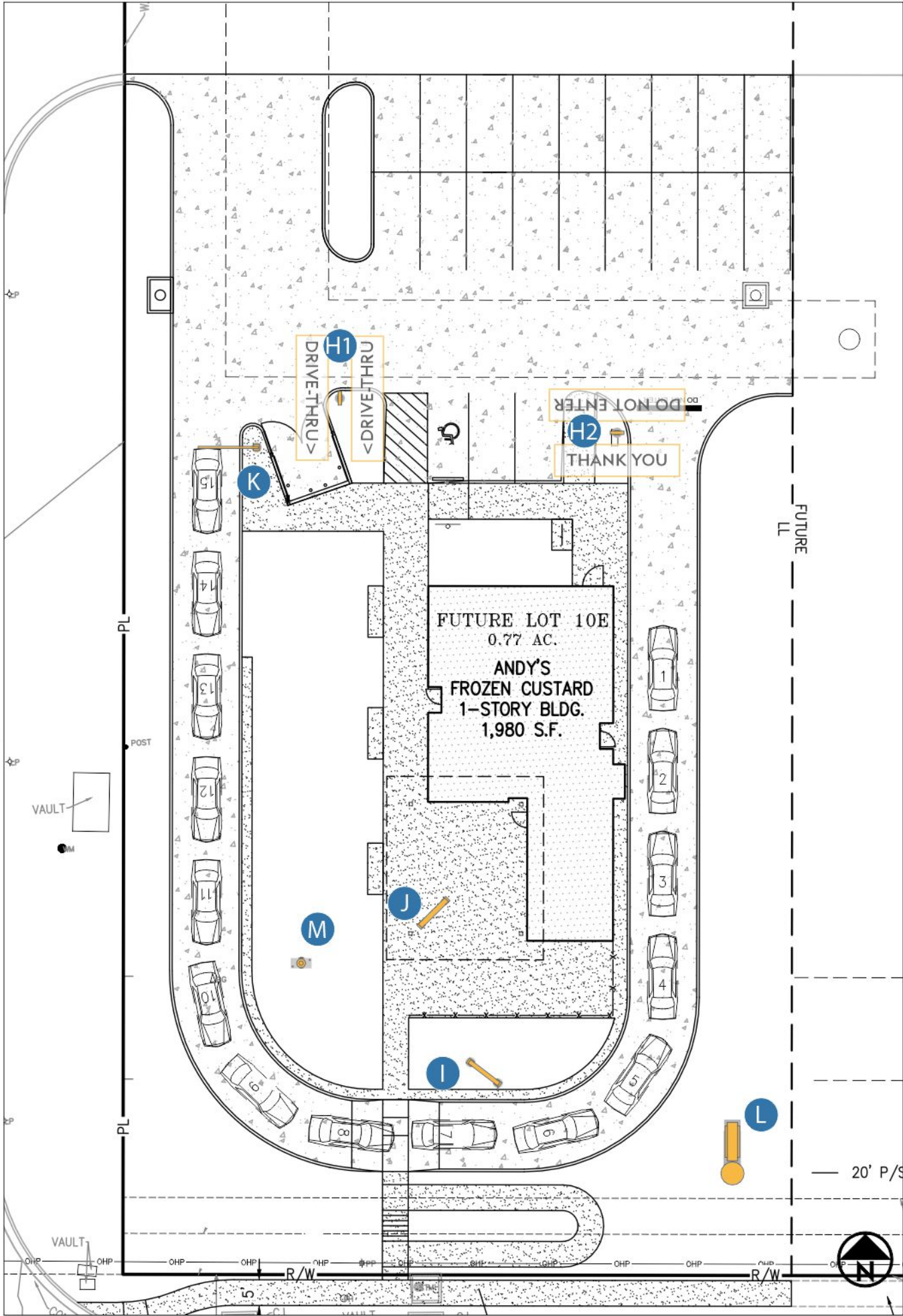
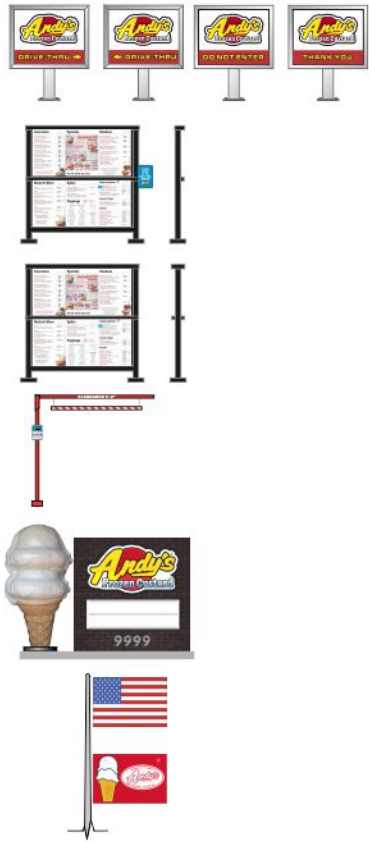
9' Clearance Standard Clearance Bar; "No Trailers" Sign Panel
- L

MONUMENT (AFC-STND-MONU-1)

Masonry Structure; 8' cone; Illuminated Pan-Face Logo; Changeable Copy Board; Address Number FCOs
- M

25' FLAG POLE (AFC-OPT-FLAG-25)

25' Flag Pole; 6' x 4' American Flag; 6' x 4' Andy's Flag; Flood Lighting



ANDY'S FROZEN CUSTARD
CUSTOMER

0312-24-SITE-1 AS SHOWN
DRAWING NUMBER ELEVATION

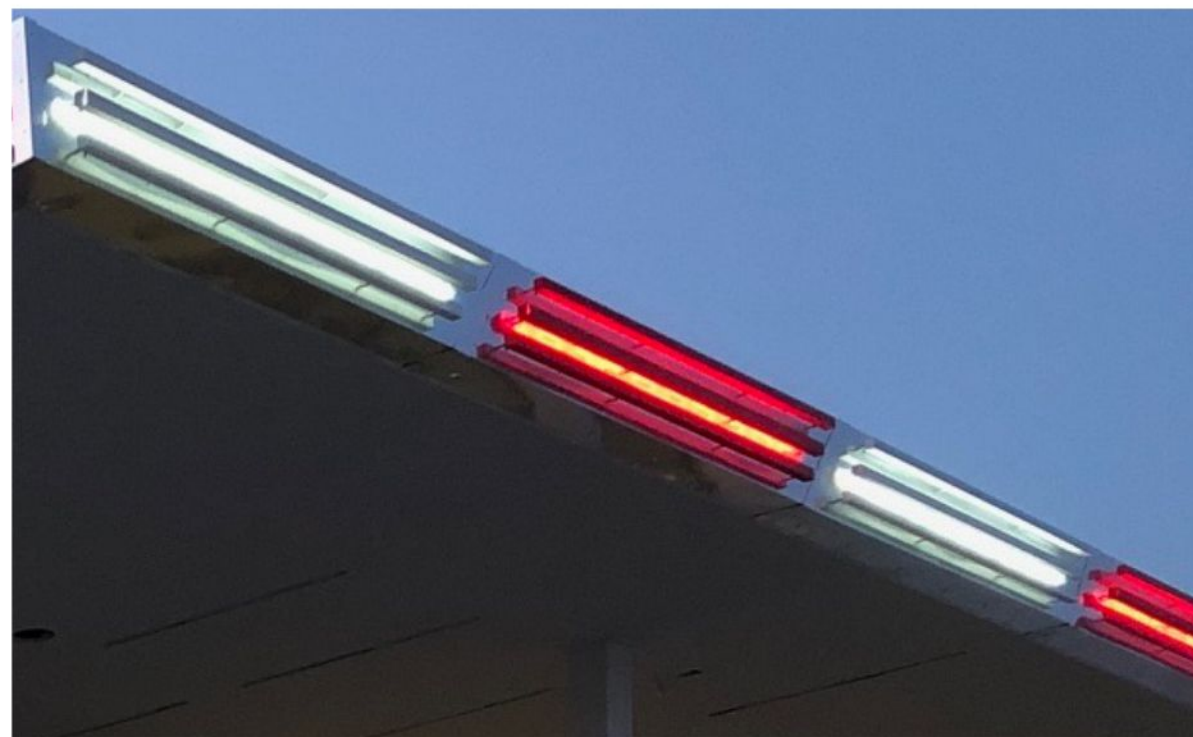
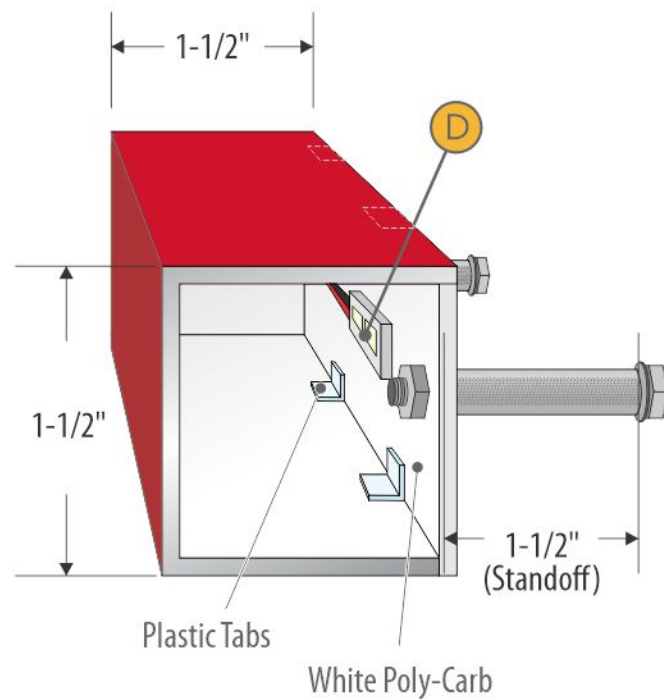
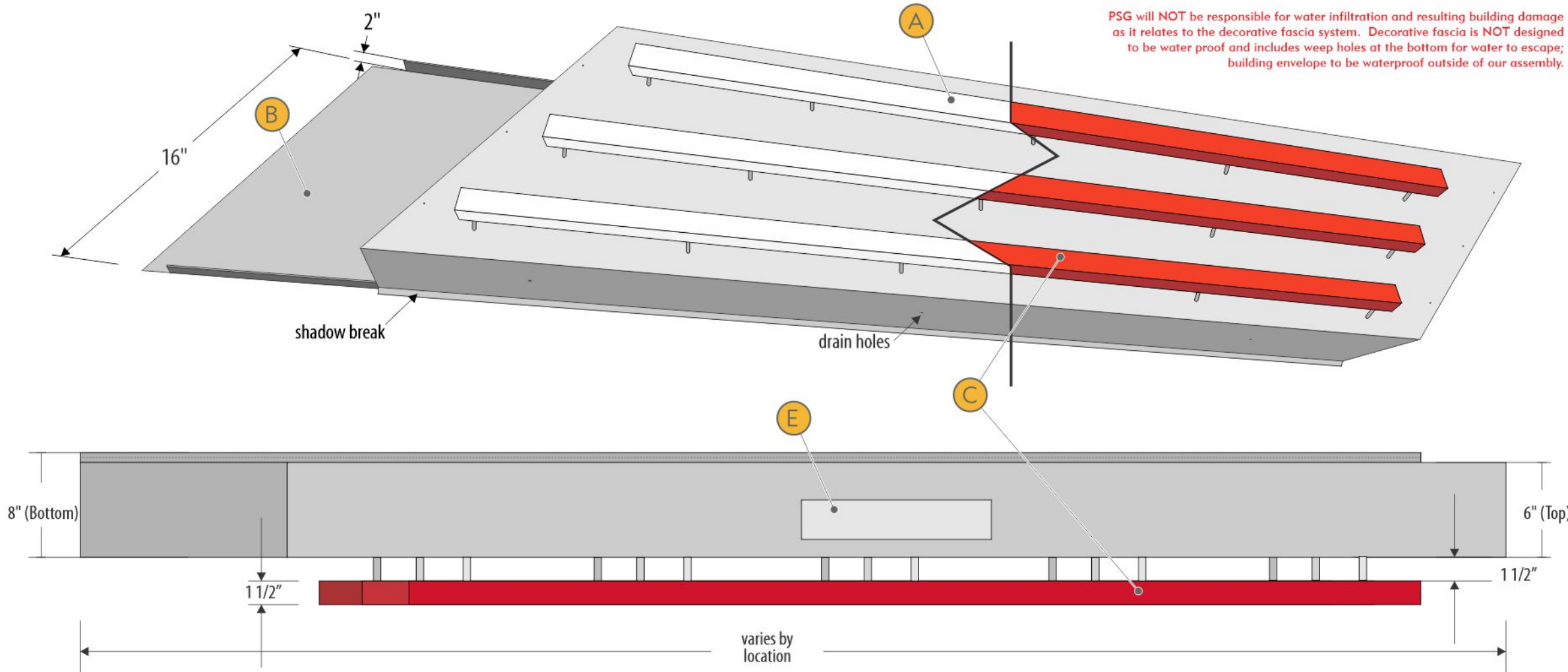
04.05.24
DATE REVISED

DEREK CROUCH TIM SWAIM
DESIGNER PROJECT MANAGER

LEE SUMMIT, MO
LOCATION

| SIGN SCHEDULE | QUANTITY |
|--|----------|
| BUILDING SIGNAGE | |
| C Channel Cabinets (0312-24-EWA L-1) | 1 |
| D Channel Cabinets (0312-24-EWA L-2) | 2 |
| DETACHED SIGNAGE | |
| H 2-Sided Illuminated Directional (AFC-STND-DIRE-1) | 2 |
| I 1-Sided Menu Board (AFC-STND-MENU-1-SS) | 1 |
| J 2-Sided Menu Board (AFC-STND-MENU-1-DS) | 1 |
| K Clearance Bar (AFC-STND-BAR-1) | 1 |
| L 2-Sided Monument (AFC-STND-MONU-1) | 1 |
| M 35' Flag Pole (AFC-OPT-FLAG-35) | 1 |

The lighted fascia system PSG is providing is purely decorative and NOT to be made part of a waterproof envelop design.
PSG will NOT be responsible for water infiltration and resulting building damage as it relates to the decorative fascia system. Decorative fascia is NOT designed to be water proof and includes weep holes at the bottom for water to escape; building envelope to be waterproof outside of our assembly.



ANDY'S FROZEN CUSTARD

CUSTOMER

AFC-OPT-FASC-3

DRAWING NUMBER

AS SHOWN

ELEVATION

09.27.22

DATE REVISED

DEREK CROUCH

DESIGNER

TIM SWAIM

PROJECT MANAGER

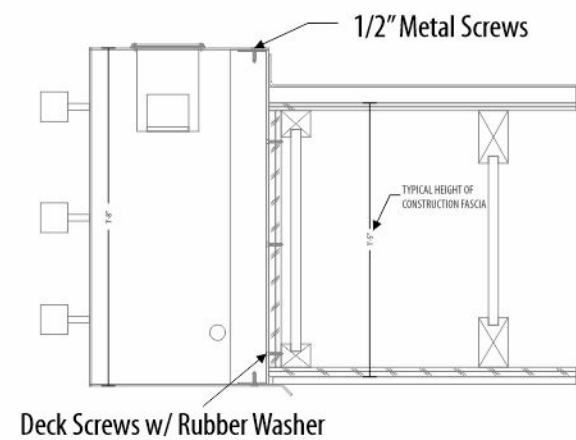
ALL

LOCATION

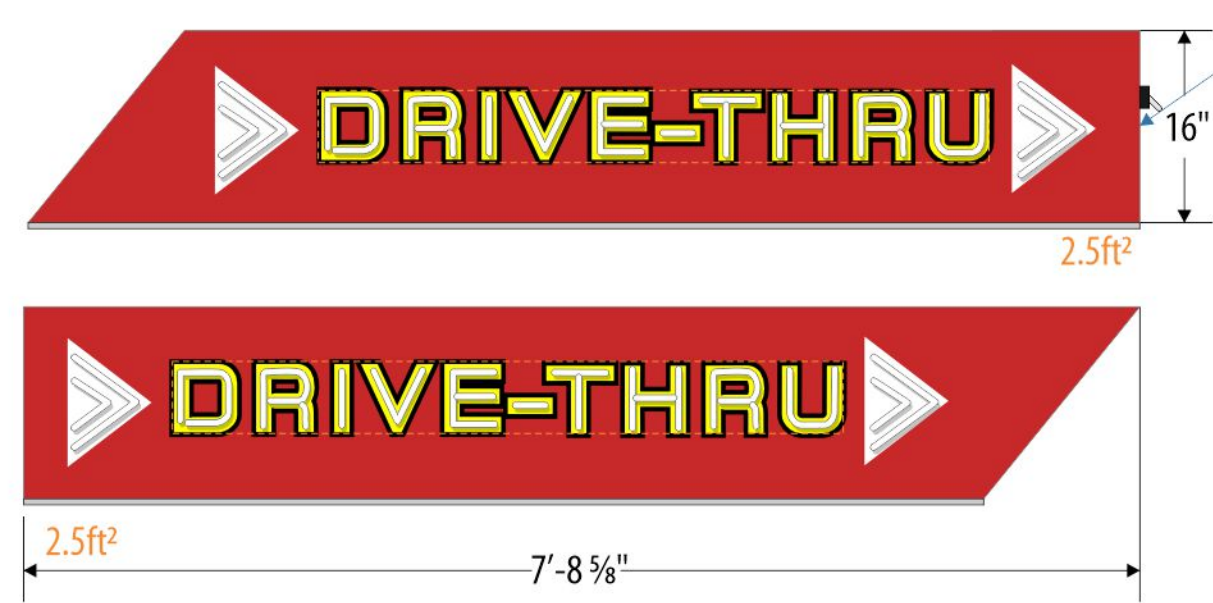
SCOPE OF WORK

- A .040 Polished Aluminum Face**
 - Finish - Bright Clear Anodized Aluminum
- B .063 Aluminum Backpan**
- C Painted Aluminum Reverse Channel**
 - Paint - White (Gloss)
 - Paint - MP 10224 Hot Rod Red (Gloss)
- D LED Accent Lighting**
 - LED - White
 - LED - Red
- E Access Panel**

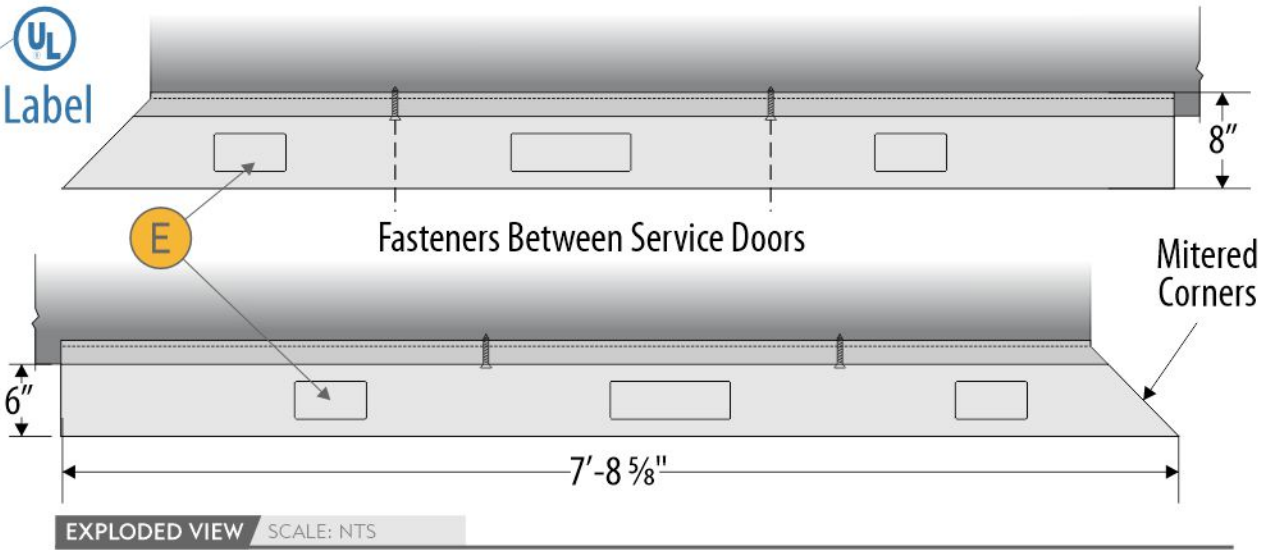
ATTACHMENT METHOD



Front View



Top View

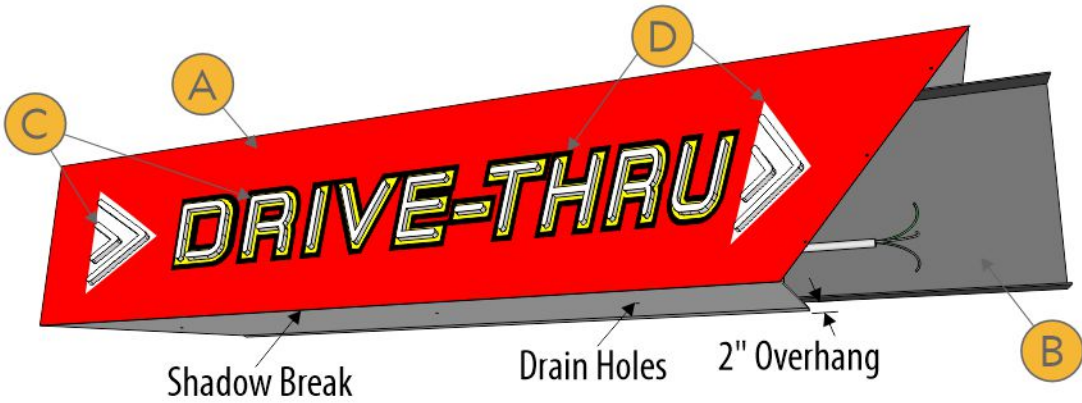


AFC DISCLAIMER - FASCIA

THE LIGHTED FASCIA SYSTEM PSG IS PROVIDING IS PURELY DECORATIVE AND NOT TO BE MADE PART OF A WATERPROOF ENVELOP DESIGN.

PSG WILL NOT BE RESPONSIBLE FOR WATER INFILTRATION AND RESULTING BUILDING DAMAGE AS IT RELATES TO THE DECORATIVE FASCIA SYSTEM. DECORATIVE FASCIA IS NOT DESIGNED TO BE WATER PROOF AND INCLUDES WEEP HOLES AT THE BOTTOM FOR WATER TO ESCAPE; BUILDING ENVELOPE TO BE WATERPROOF OUTSIDE OF OUR ASSEMBLY.

PHOTO EXAMPLE SCALE: NTS

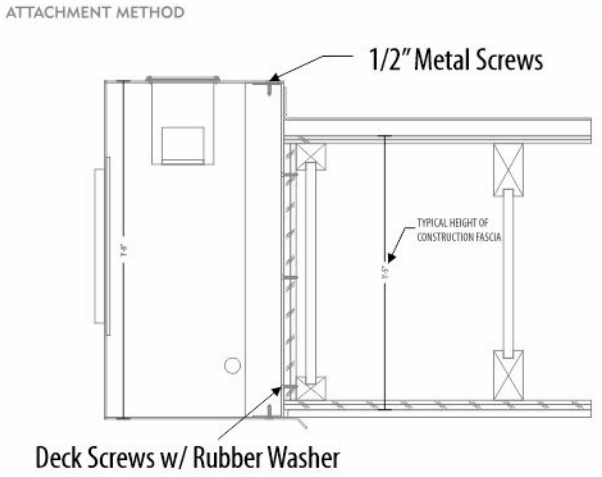


| | |
|-----------------------|-----------------|
| ANDY'S FROZEN CUSTARD | |
| CUSTOMER | |
| AFC-OPT-FASC-1 | AS SHOWN |
| DRAWING NUMBER | ELEVATION |
| 03.21.23 | |
| DATE REVISED | |
| DEREK CROUCH | TIM SWAIM |
| DESIGNER | PROJECT MANAGER |

| | |
|---------------|---|
| ALL | |
| LOCATION | |
| SCOPE OF WORK | |
| A | .040 Polished Aluminum Face |
| B | .063 Aluminum Backpan |
| C | 1" Internally LED Illuminated Acrylic Push Thrus - White Translucent Front/Back |
| D | Vinyl Applied to Face |
| | ● Vinyl - 3M 2080 Hot Rod Red (Opaque) |
| | ● Vinyl - Digital Print Applied to Red Vinyl (Opaque) |
| E | Access Panel |

ELECTRICAL REQUIREMENTS
120V; 2.75A per Cabinet

ARCHITECT SHALL COORDINATE ALL FLASHING DETAILS TO PROVIDE WEATHERTIGHT SEAL BETWEEN FASCIA AND ROOF SYSTEM



MOUNTING VIEW SCALE: NTS

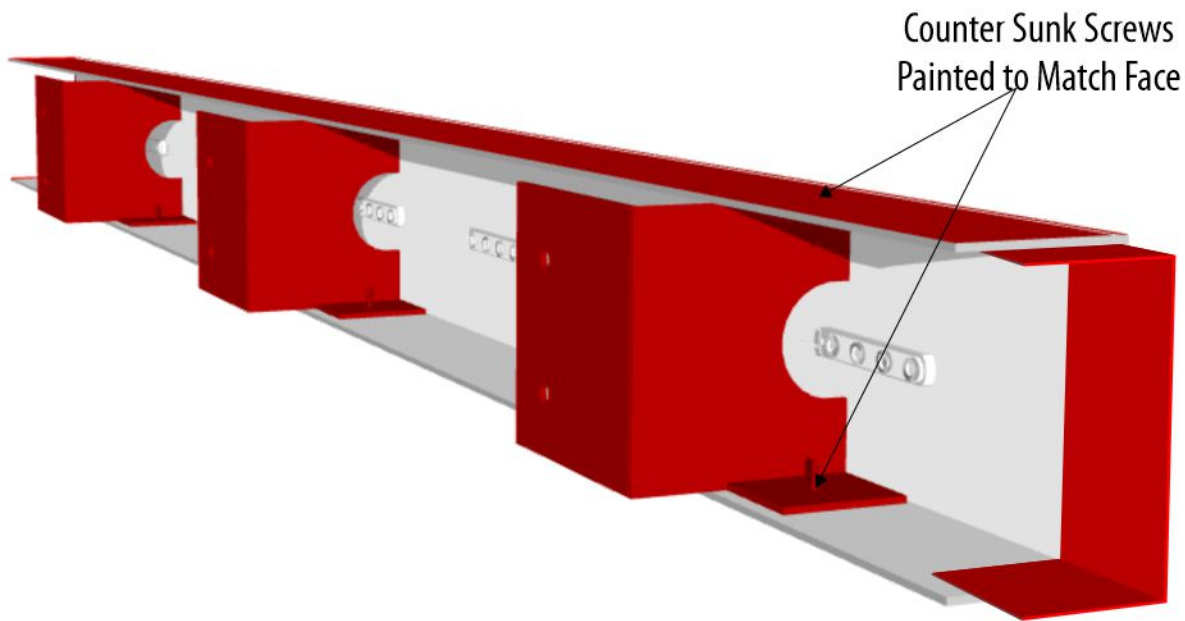
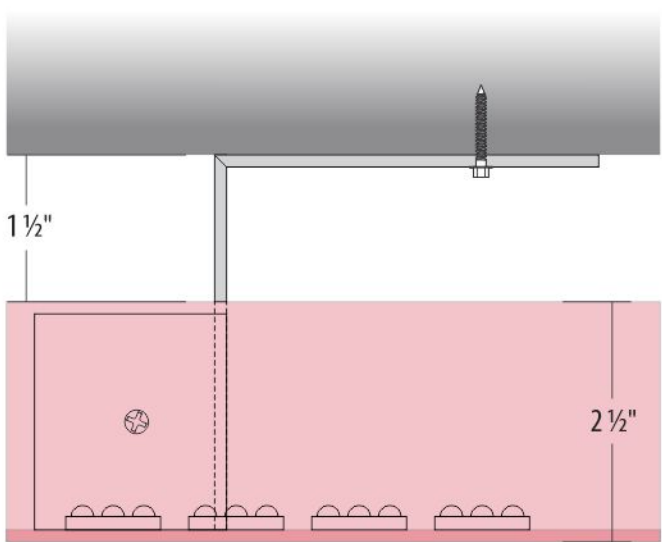


PHOTO EXAMPLE SCALE: NTS

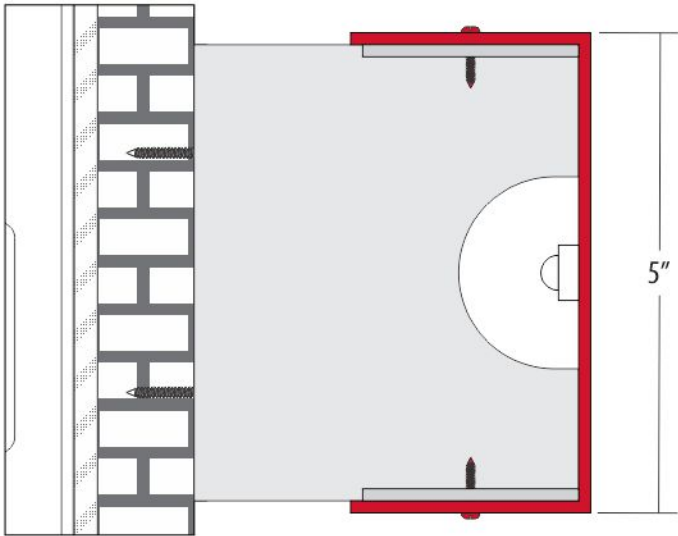


ATTACHMENT VIEW SCALE: 1:2

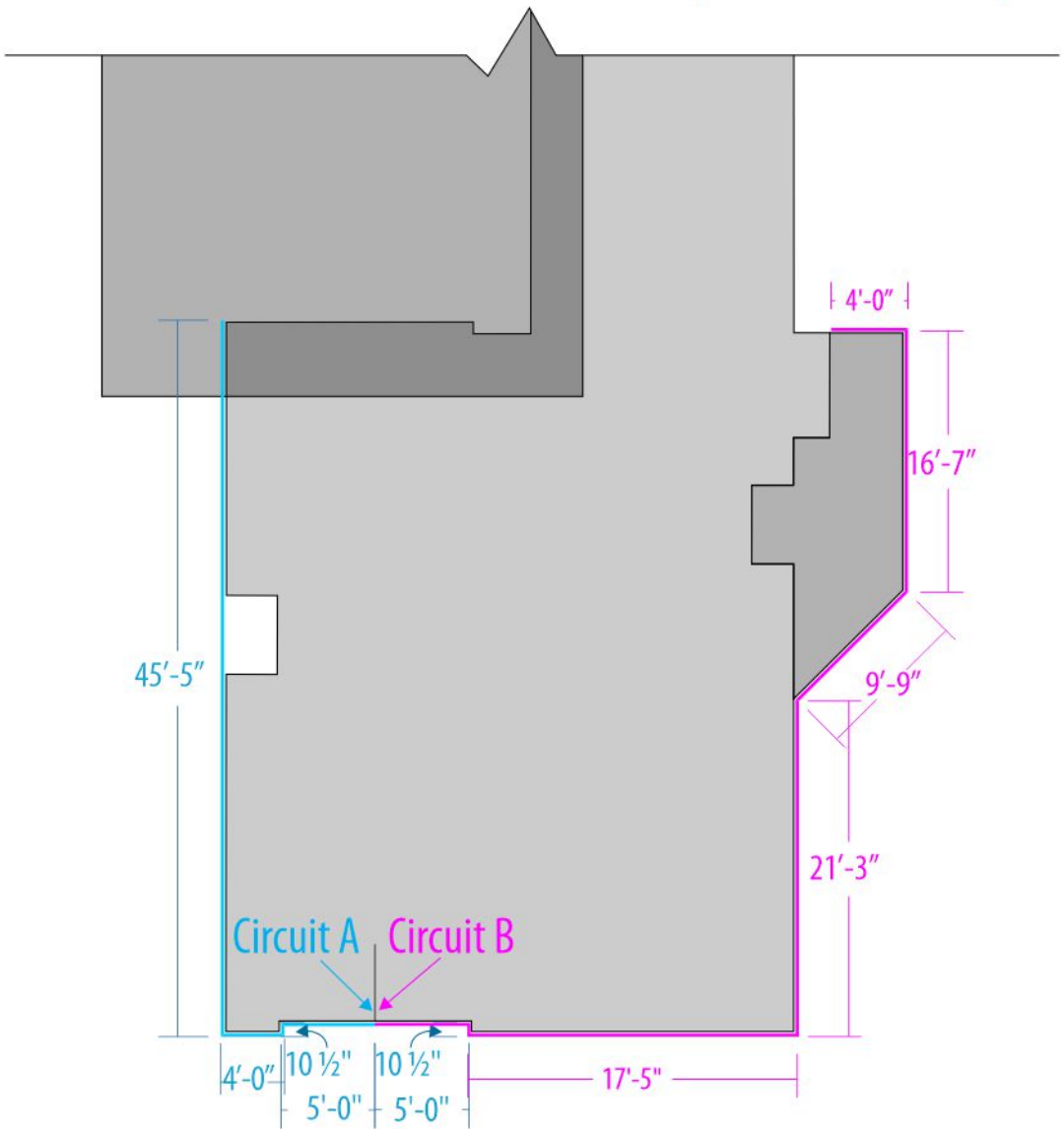
TOP VIEW



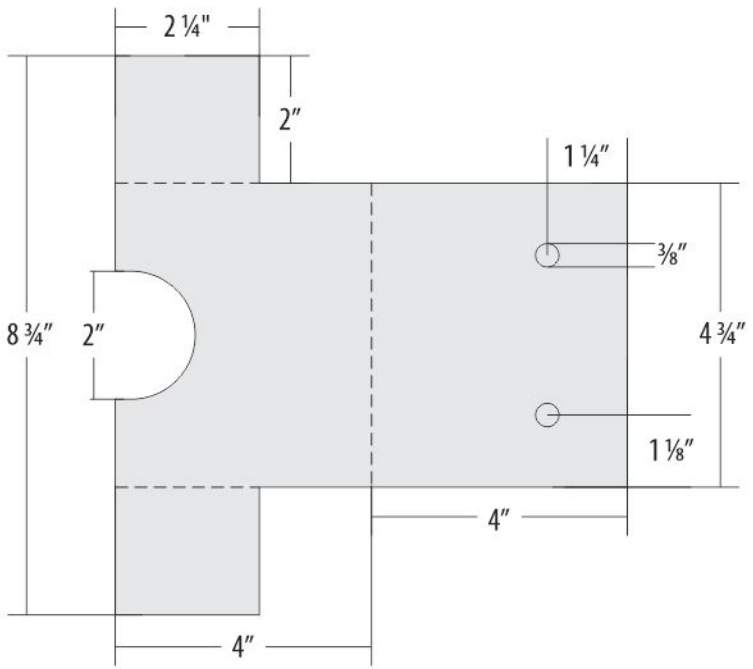
SIDE VIEW



OVERHEAD VIEW SCALE: 1"=10'



EXPLODED BRACKET VIEW SCALE: 1:3



*Drawings are Typical Pending Architectural Renderings
*See Instalation packet for final circuit layout

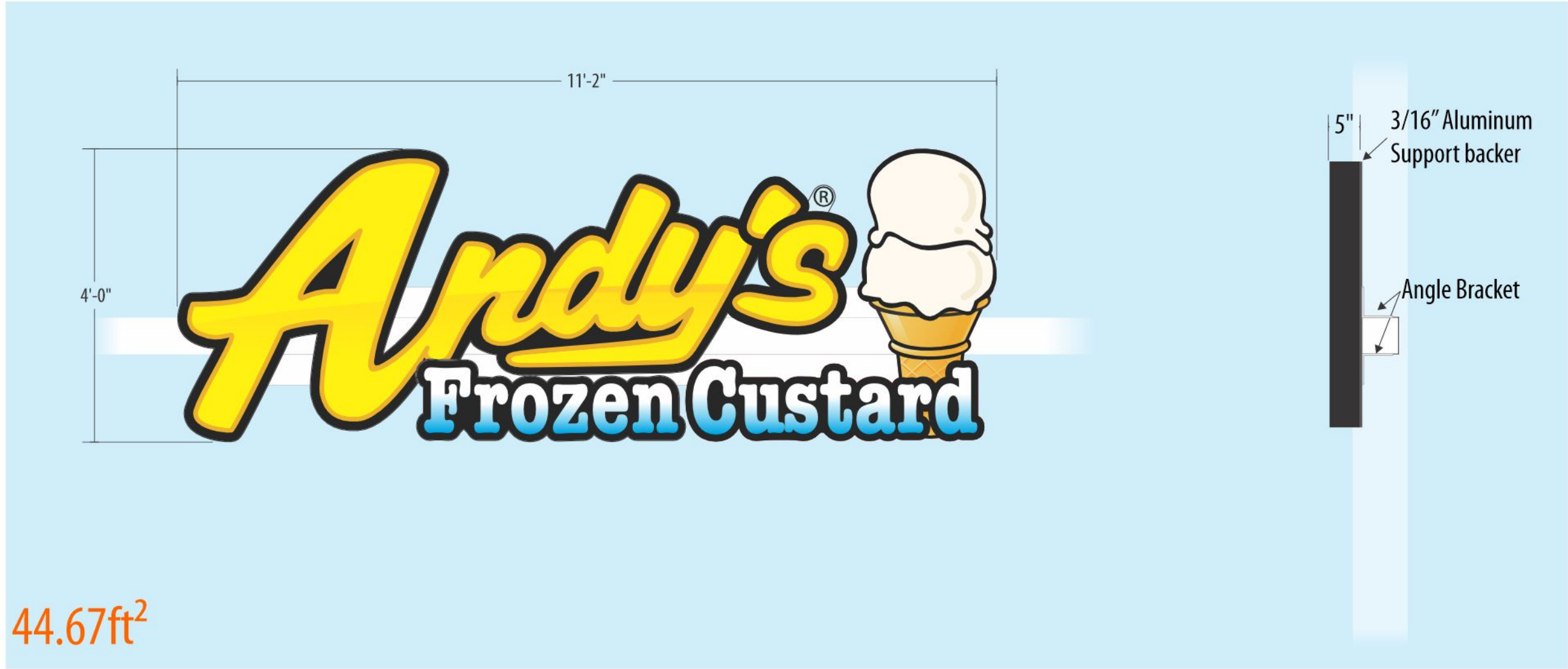
| | |
|-----------------------|-----------|
| ANDY'S FROZEN CUSTARD | |
| CUSTOMER | |
| 0312-24-BAND-1 | AS SHOWN |
| DRAWING NUMBER | ELEVATION |
| 03.13.24 | |
| DATE REVISED | |
| DEREK CROUCH | TIM SWAIM |
| PROJECT MANAGER | DESIGNER |
| LEE SUMMIT, MO | |
| LOCATION | |
| SCOPE OF WORK | |

- Reverse Channel Light Stripe**
- A** Halo-Lit Reverse Channel Aluminum Band
 - Painted Aluminum Reverse Channel
 - LED Halo Illuminated
 - Mechanically Fastened w/ Painted Hardware
 - Paint (Interior) - White
 - Paint - MP 10224 Hot Rod Red (Gloss)
 - B** Aluminum Mount Brackets
 - Painted
 - Mechanically Fastened to Exterior Wall
 - Paint - MP 10224 Hot Rod Red (Gloss)

Electrical Info:

Section A: 1-10 Amp Circuit

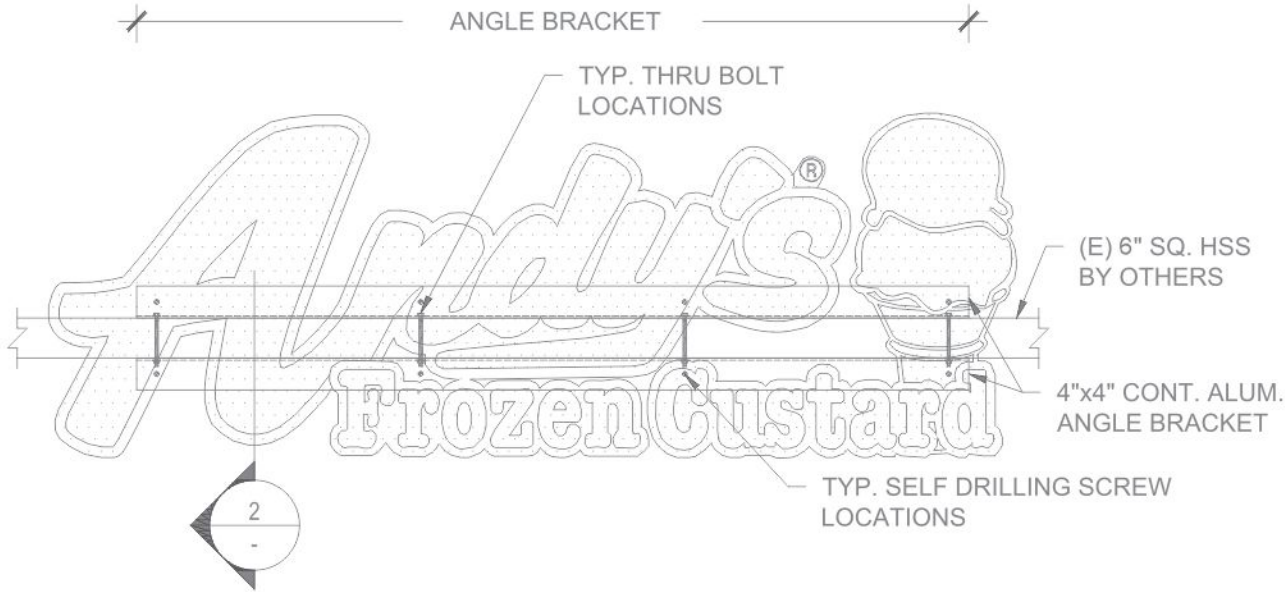
Section B: 1-10 Amp Circuit



44.67ft²

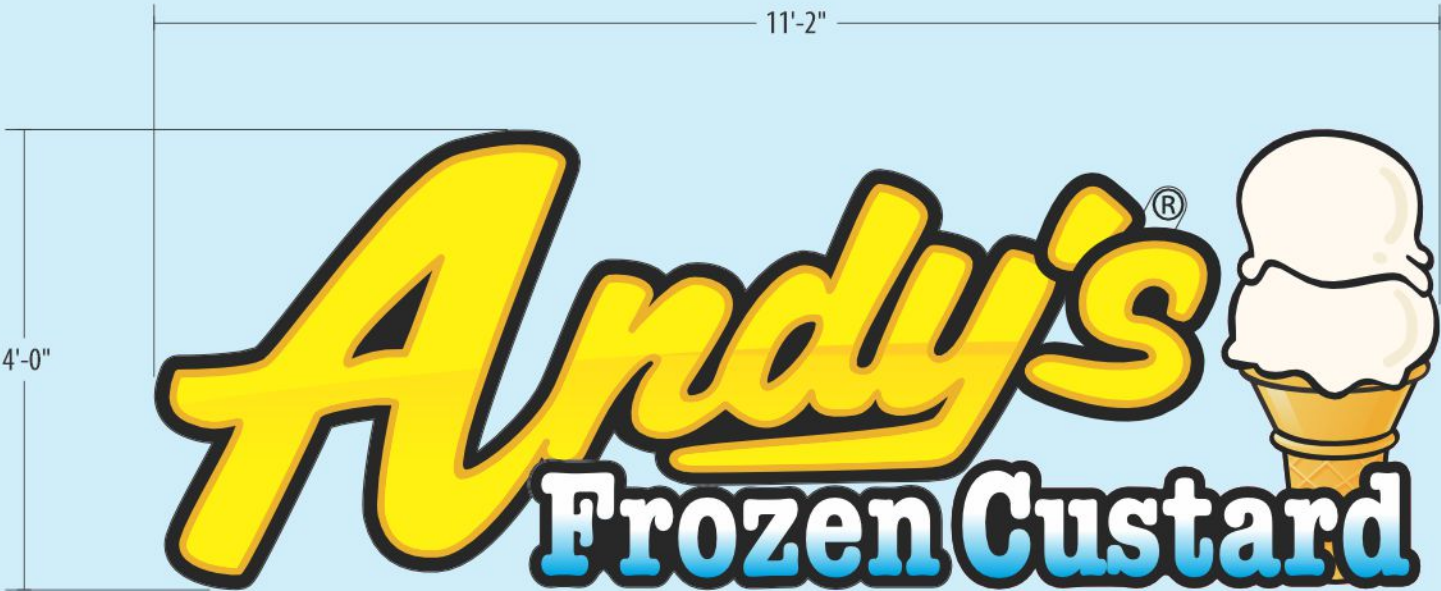
BACK VIEW SCALE: NTS

ATTACHMENT VIEW SCALE: NTS



| | |
|---|--|
| ANDY'S FROZEN CUSTARD | |
| CUSTOMER | |
| 0312-24-EWAL-1 | SEE 0312-24-ELEV-1 |
| DRAWING NUMBER | ELEVATION |
| 03.15.24 | |
| DATE REVISED | |
| DEREK CROUCH | TIM SWAIM |
| DESIGNER | PROJECT MANAGER |
| LEE SUMMIT, MO | |
| LOCATION | |
| SCOPE OF WORK | |
| Internally Illuminated Channel Cabinets | |
| A | Trimcap |
| | ● Black |
| B | 5" Returns |
| | ● Black |
| C | Digitally Printed Graphics Applied To Acrylic Faces |
| | ● Vinyl - Digital Print |
| D | Mounted to Aluminum Backer |
| | - Backer mounted to horizontal beam w/ aluminum angle brackets |
| | ● Paint - Black (Satin) |
| | ○ Paint - White (Satin) |
| E | Clear acrylic tab for Register Trademark |
| | - Vinyl applied to acrylic tab |
| | ● Vinyl - Black |
| | ● Acrylic - Clear |
| | Power supply self contained within Andy's Cabinet |

ATTACHMENT METHOD



5"



44.67ft²



ANDY'S FROZEN CUSTARD
CUSTOMER

0312-24-EWAL-2 SEE 0312-24-ELEV-1
DRAWING NUMBER ELEVATION

03.15.24
DATE REVISED

DEREK CROUCH TIM SWAIM
DESIGNER PROJECT MANAGER

LEE SUMMIT, MO
LOCATION

SCOPE OF WORK

Internally Illuminated Channel Cabinets

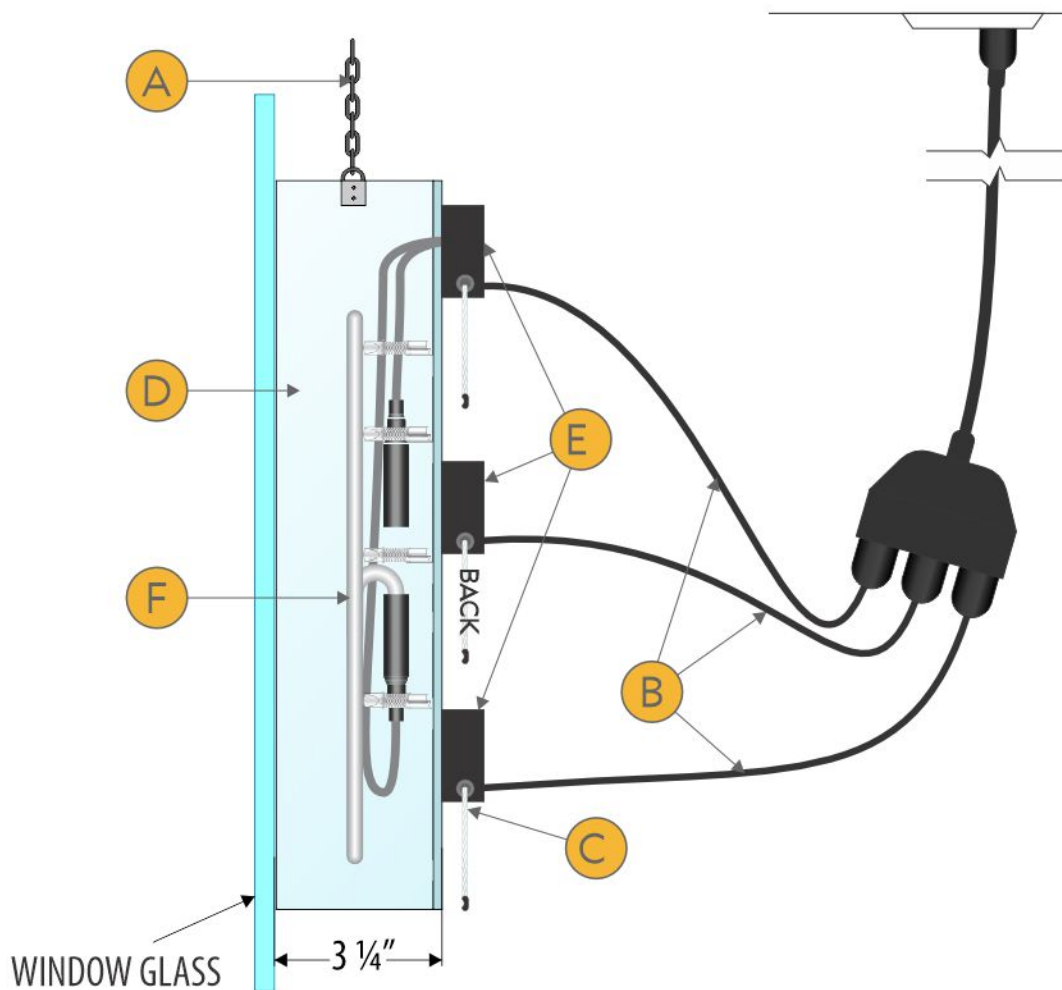
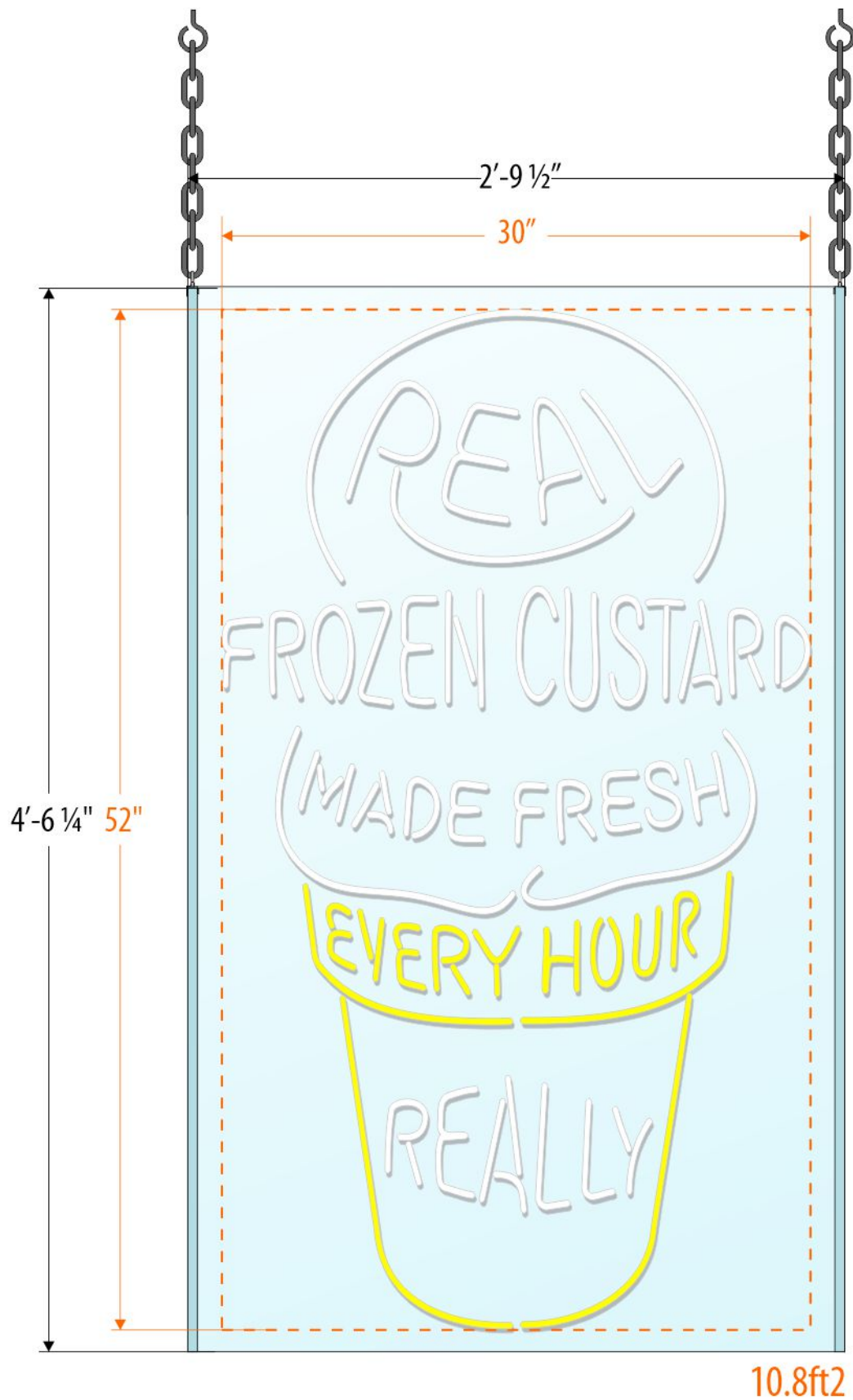
- A Trimcap
 - Black
- B 5" Returns
 - Black
- C Digitally Printed Graphics Applied To Acrylic Faces
 - Vinyl - Digital Print
- D Flush mounted to building exterior
- E Clear acrylic tab for Register Trademark - Vinyl applied to acrylic tab
 - Vinyl - Black
 - Acrylic - Clear

Power supply self contained within Andy's Cabinet

ATTACHMENT METHOD

A\ANDY'S FROZEN CUSTARD\LOCATIONS\MISSOURI\LEE'S SUMMIT\ART\RENDERINGS





* Placement is Typical Pending Architectural Drawings

ANDY'S FROZEN CUSTARD
CUSTOMER

AFC-STND-IWAL-2 AS SHOWN
DRAWING NUMBER ELEVATION

06.27.22
DATE REVISED

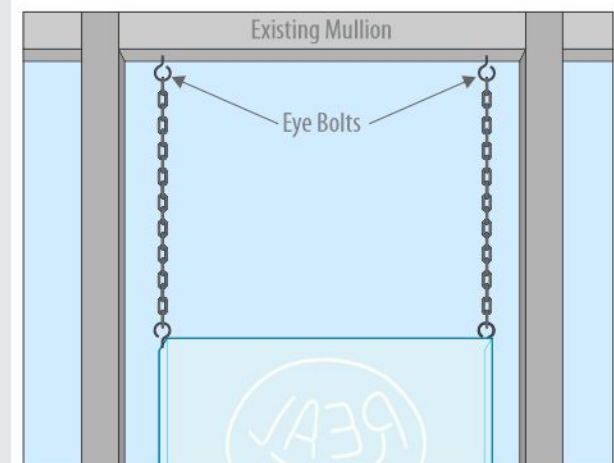
DEREK CROUCH TIM SWAIM
DESIGNER PROJECT MANAGER

LOCATION
LOCATION

SCOPE OF WORK
Hanging Neon Window Sign

- A Chain D-Clip to Ceiling (Adjust to Measure)
- B 6' Cord to 120v Service (qty. 3) Plugged into 6' 3-Way Extension Cord
- C On/Off Switch w/ Chain
- D 3/16" Clear Acrylic, Custom Bent to Shape
- E Electronic Transformer
- F Neon Tube Lighting
 - Neon - Clear Bright Yellow 12mm
 - Neon - Snow White 10mm

Electrical Requirements
- 120V, 3A per Sign; 3 Cords to Outlet 108" AFF



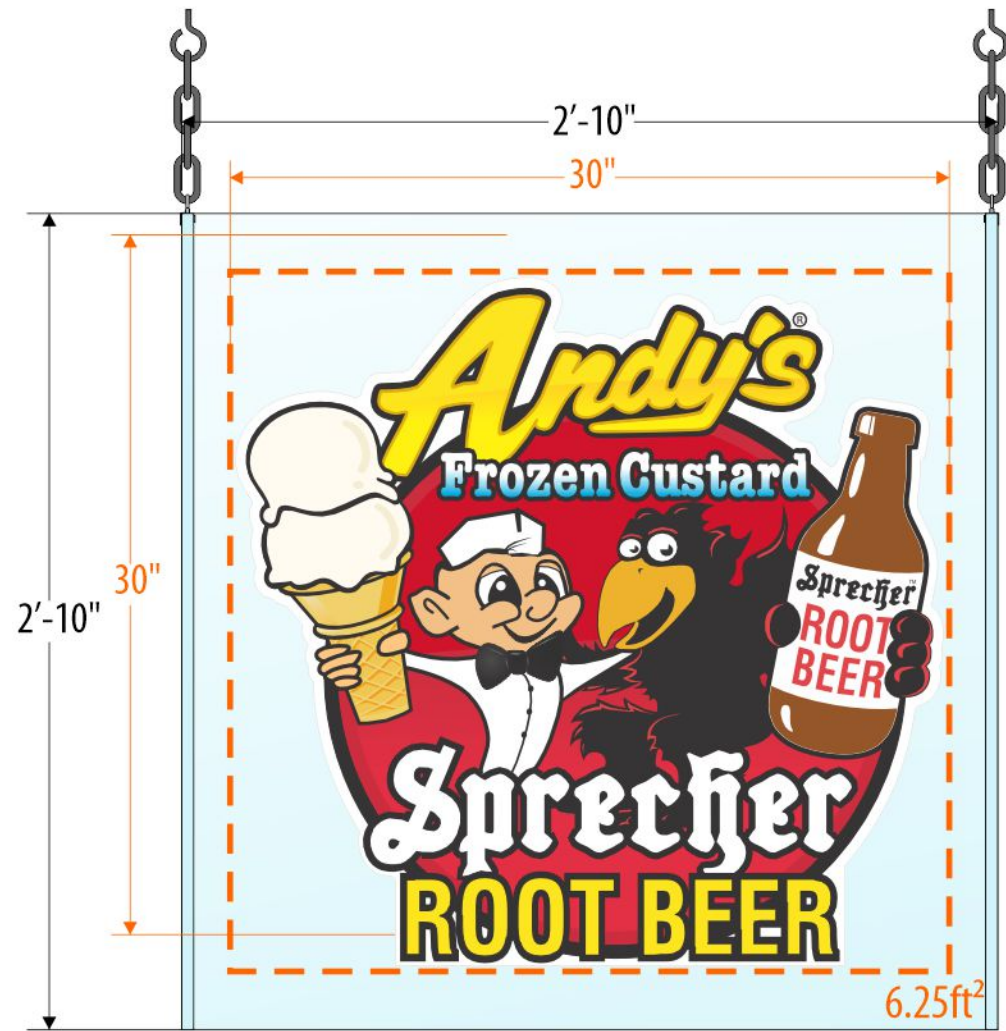
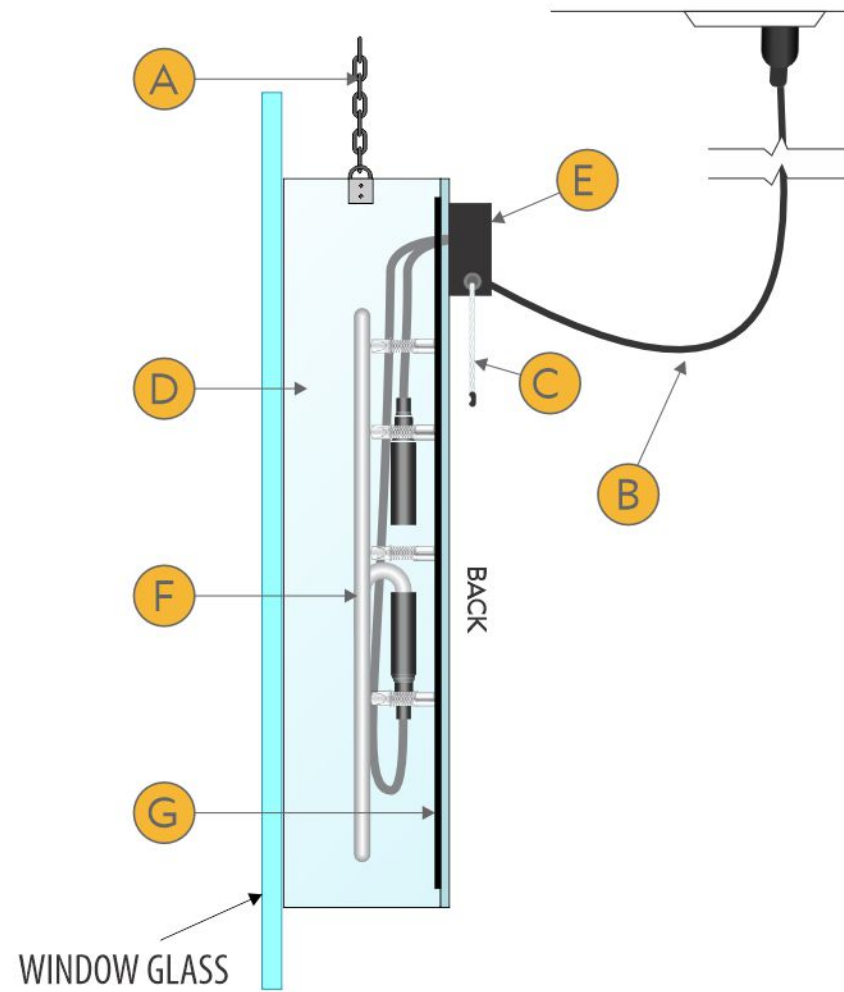
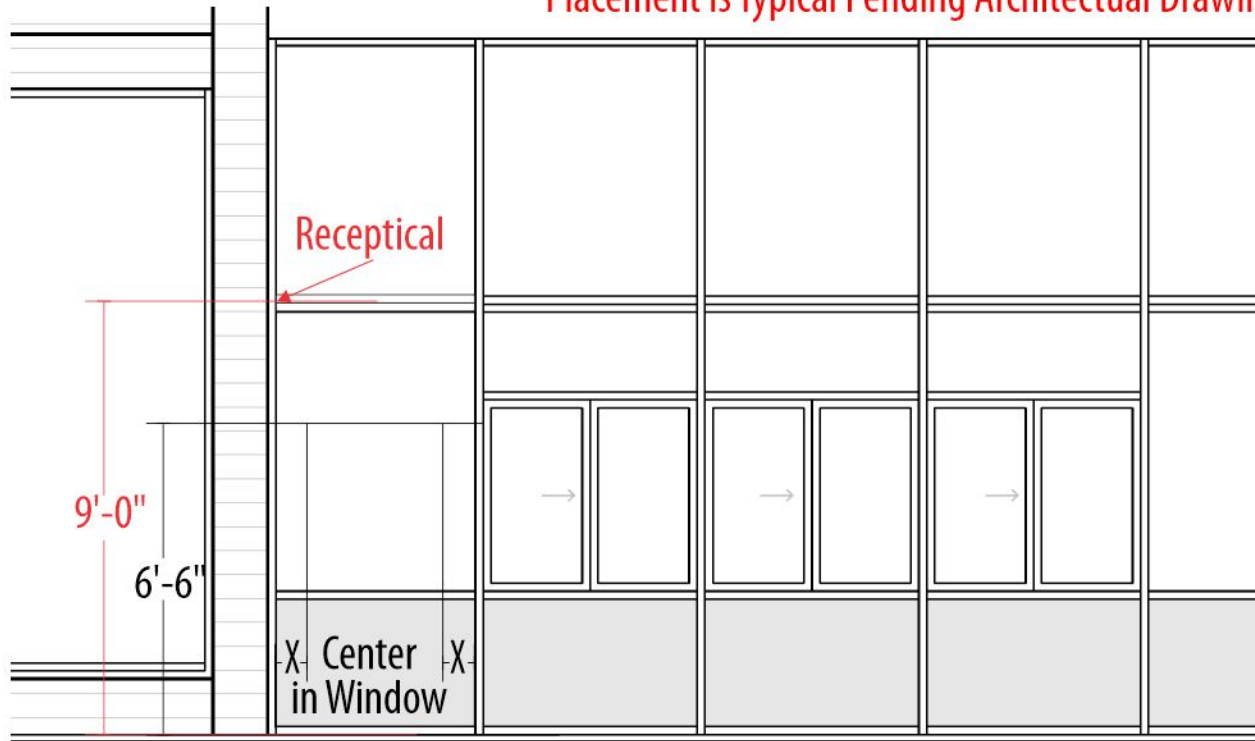


PHOTO EXAMPLE SCALE: NTS



TYPICAL PLACEMENT SCALE: 1/4" = 1'



* Placement is Typical Pending Architectural Drawings

ANDY'S FROZEN CUSTARD
CUSTOMER

AFC-STND-IWAL-3 AS SHOWN
DRAWING NUMBER ELEVATION

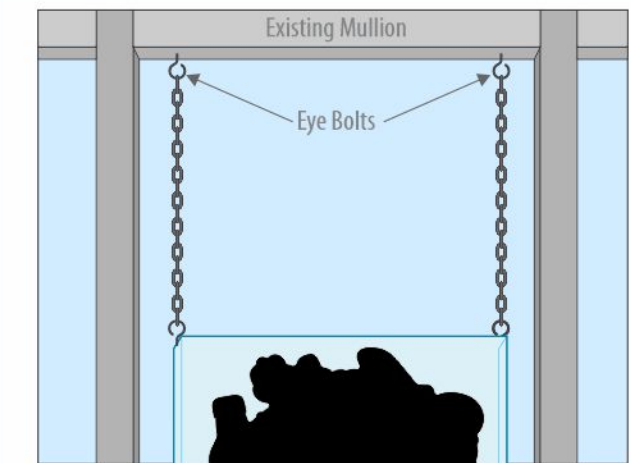
04.19.22
DATE REVISED

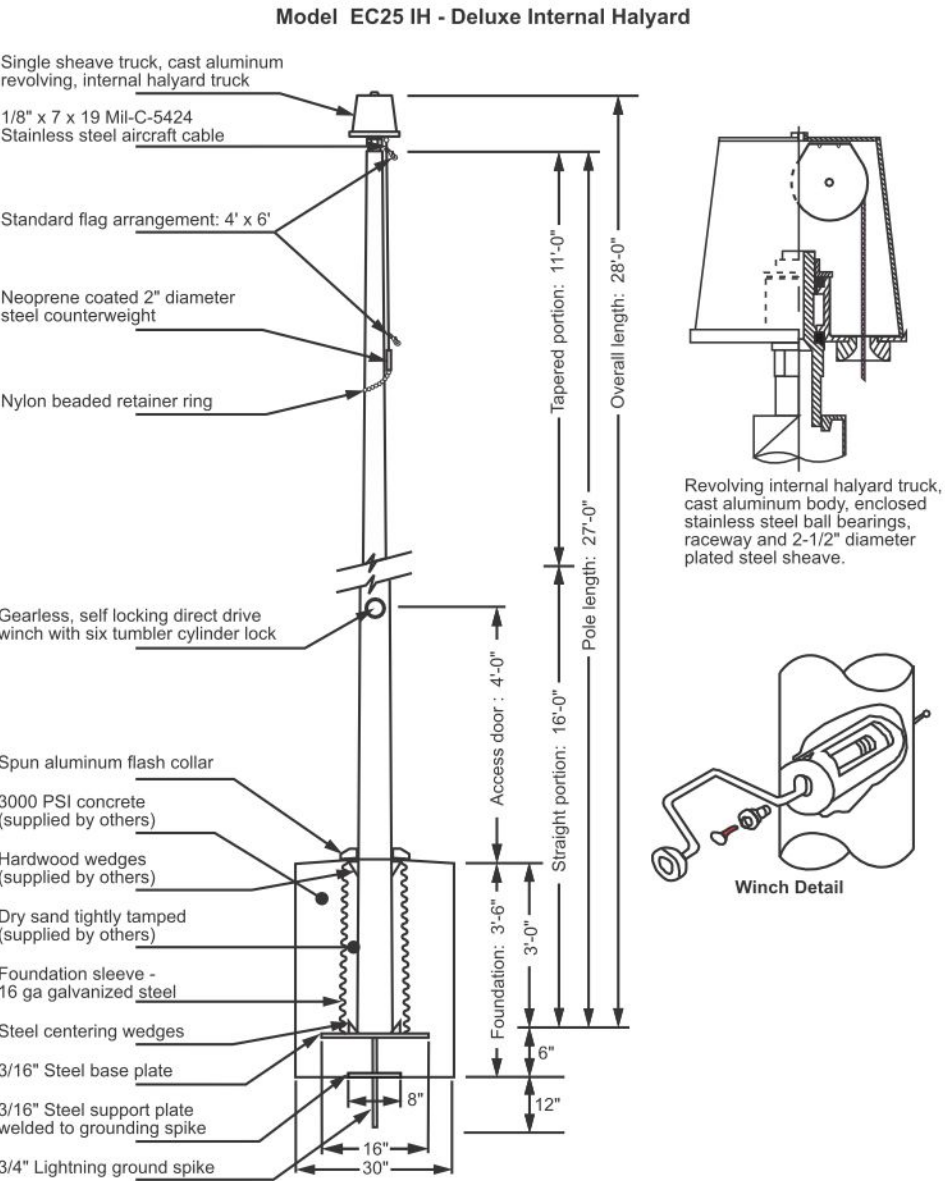
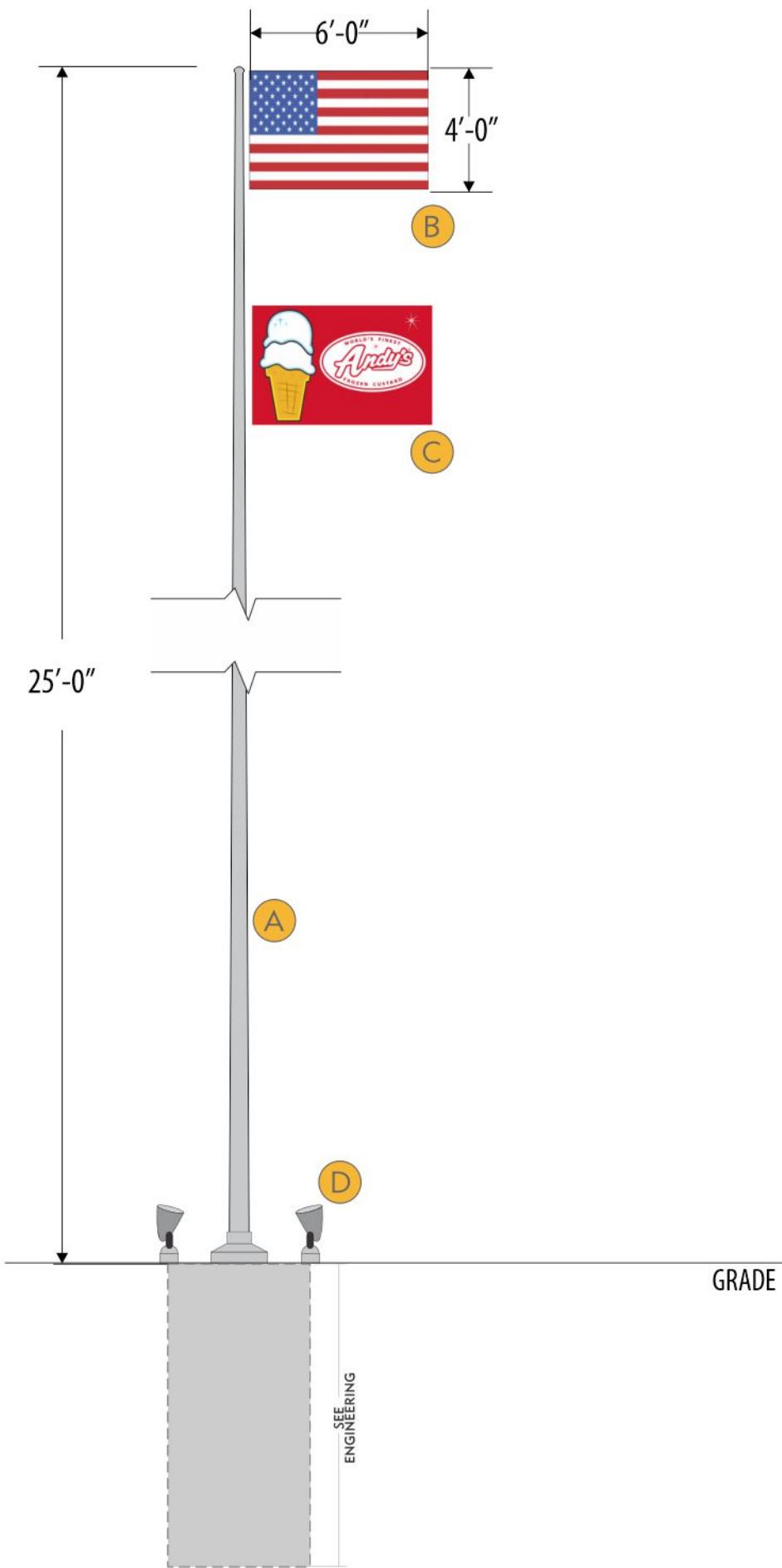
DEREK CROUCH TIM SWAIM
DESIGNER PROJECT MANAGER

ALL
LOCATION

SCOPE OF WORK
Hanging Neon Window Sign

- A Chain D-Clip to Ceiling (Adjust to Measure)
- B 6' Cord to 120v Service
- C On/Off Switch w/ Chain
- D 3/16" Clear Acrylic, Custom Bent to Shape
- E Electronic Transformer
- F Neon Tube Lighting
 - Neon - Clear Bright Yellow 12mm
 - Neon - Snow White 10mm
- G Digital Print Vinyl Applied to Face
 - Vinyl - Digital Print
- Electrical Requirements
 - 120V, 3A per Sign to Outlet 108" AFF





ANDY'S FROZEN CUSTARD-MASTER

CUSTOMER

AFC-OPT-FLAG-25

AS SHOWN

DRAWING NUMBER

ELEVATION

04.04.24

DATE REVISED

DEREK CROUCH

TIM SWAIM

PROJECT MANAGER

DESIGNER

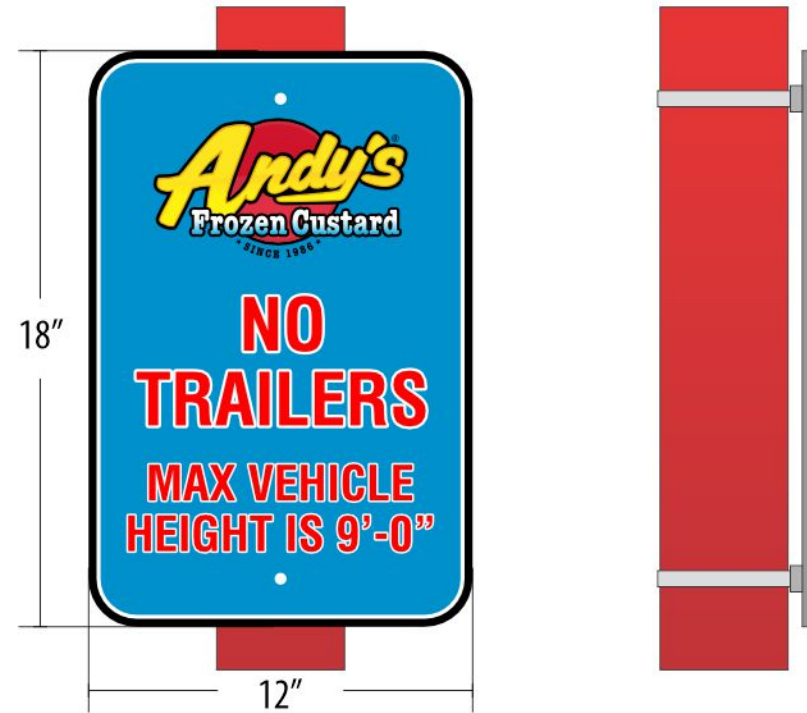
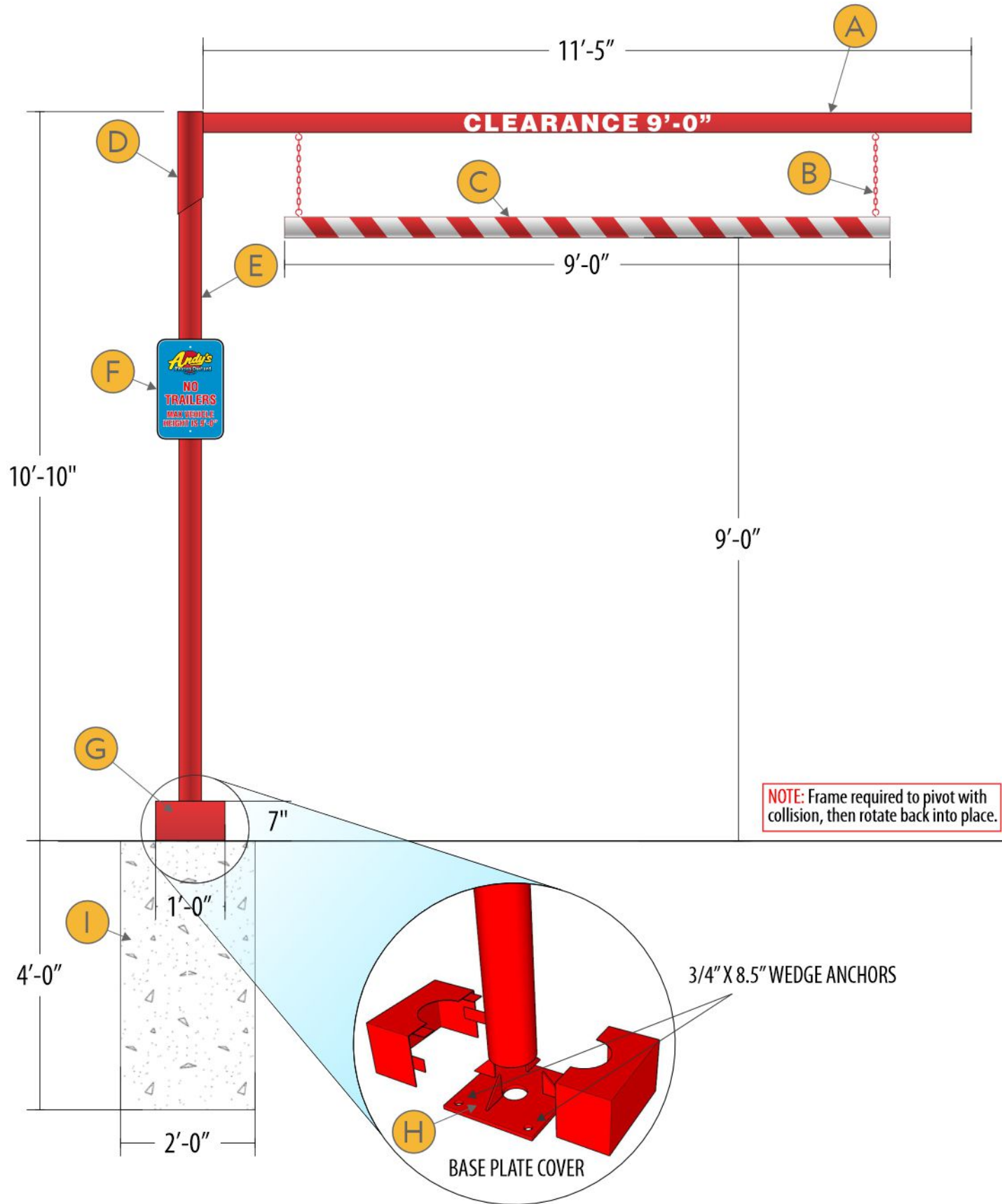
ALL

LOCATION

SCOPE OF WORK

- A 25' flag pole (.156 w) standard aluminum finish 8" dia, with internal halyard
- B 6' x 4' American flag, hi-quality - double weave
- C 6' x 4' custom Andy's flag, hi-quality - double weave
- D LED up lights (qty 2), RAB model HSLED B, cool LED SPOT LT FX (dart #470-9262)
- E Power run and controllers by others
- F Foundation TBD per site specific engineering





ANDY'S FROZEN CUSTARD
CUSTOMER

AFC-STND-BAR-1 AS SHOWN
DRAWING NUMBER ELEVATION

04.27.23
DATE REVISED

DEREK CROUCH TIM SWAIM
DESIGNER PROJECT MANAGER

ALL
LOCATION

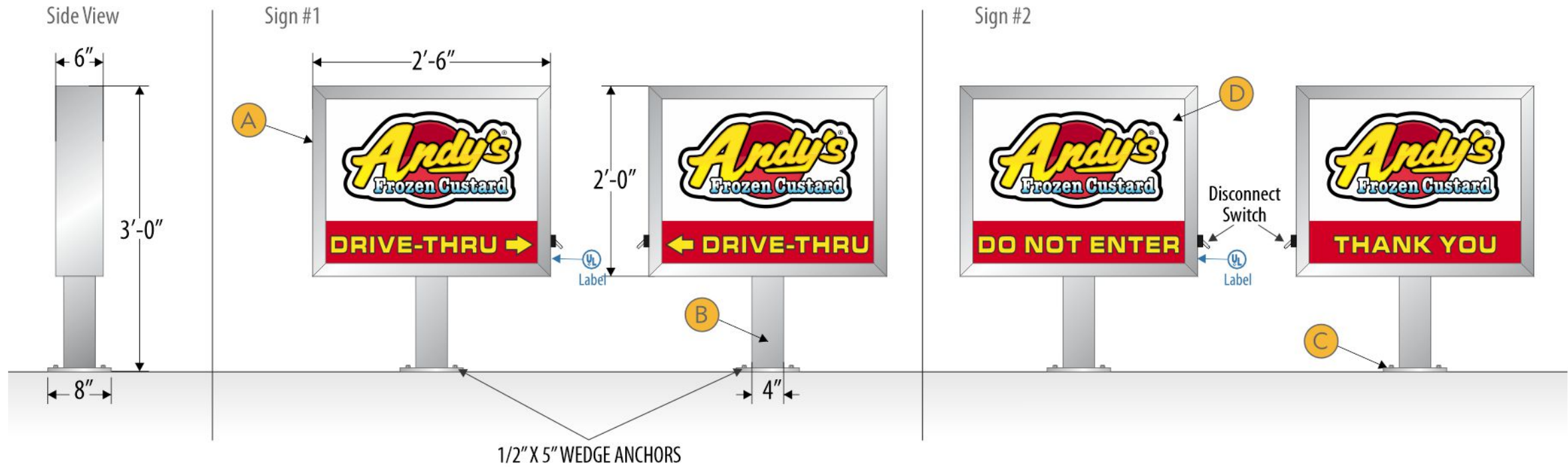
SCOPE OF WORK

- A Painted 3.5" Square Tube with White Reflective Vinyl Applied to Both Sides**
 - Paint - MP 10224 Hot Rod Red
 - Vinyl - 3M 680cr
- B Hanging Metal Chain**
 - Paint - MP 10224 Hot Rod Red
- C Painted 4" PVC Pipe Capped on Ends; White Reflective Vinyl Applied**
 - Paint - MP 10224 Hot Rod Red
 - Vinyl - 3M 680cr
- D Painted 4.5" Steel Pipe**
 - Paint - MP 10224 Hot Rod Red
- E Painted 4" Steel Pipe**
 - Paint - MP 10224 Hot Rod Red
- F Digital Printed .080 Aluminum Sign; Fastened with Adjustable Hose Clamp Brackets**
 - Digital Print Graphics
- G Painted Bolt Head Cover**
 - Paint - MP 10224 Hot Rod Red
- H 12" Base Plate w/ Wedge Anchors into Concrete**
- I 24" x 48" Round Pier Footing**

ATTACHMENT METHOD



ADJUSTABLE HOSE CLAMP BRACKETS



AD SPACE: 3.8sf

ANDY'S FROZEN CUSTARD - MASTER

CUSTOMER

AFC-STND-DIRE-1

DRAWING NUMBER

AS SHOWN

ELEVATION

09.15.22

DATE REVISED

DEREK CROUCH

DESIGNER

TIM SWAIM

PROJECT MANAGER

ALL

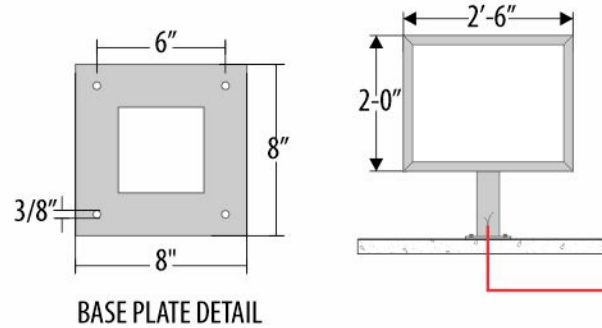
LOCATION

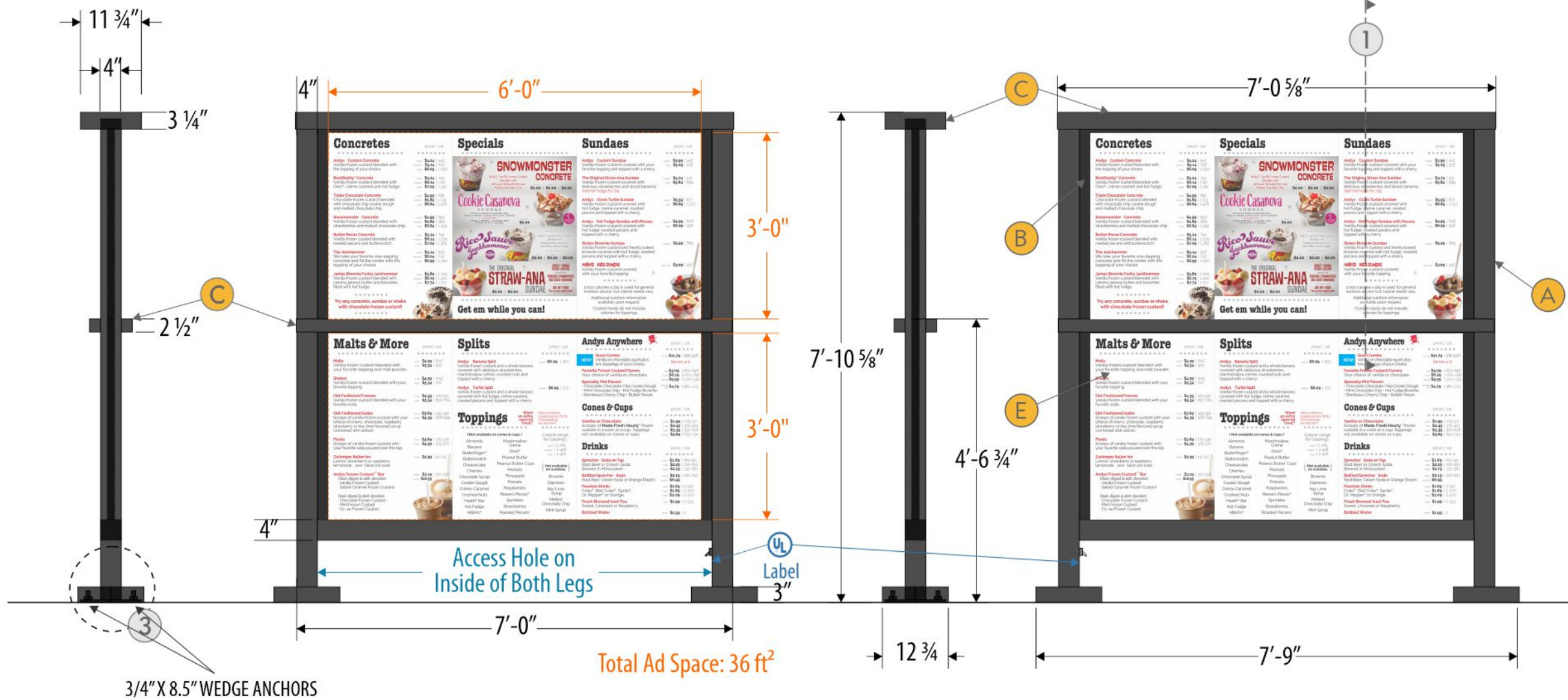
SCOPE OF WORK

2-Sided Internally Illuminated Directional

- A Aluminum Extruded Cabinet**
 - Paint - MP LV5953 Super Sparkle Silver (Satin)
- B 4" Aluminum Square Post**
 - Paint - MP LV5953 Super Sparkle Silver (Satin)
- C 1/4" Aluminum Mounting Bracket**
 - Paint - MP LV5953 Super Sparkle Silver (Satin)
- D Clear Acrylic w/ Printed Vinyl Graphics**
 - 1st Layer Vinyl - Digital Print on Clear Applied to 1st Surface
 - 2nd Layer Vinyl - Digital Print on Translucent Applied to 1st Surface
- Electrical Requirements - 120V; 1.2A**

ATTACHMENT METHOD





ANDY'S FROZEN CUSTARD - MASTER

CUSTOMER
AFC-STND-MENU-1-DS AS SHOWN
DRAWING NUMBER ELEVATION

03.17.22
DATE REVISED

DEREK CROUCH TIM SWAIM
DESIGNER PROJECT MANAGER

ALL
LOCATION

SCOPE OF WORK

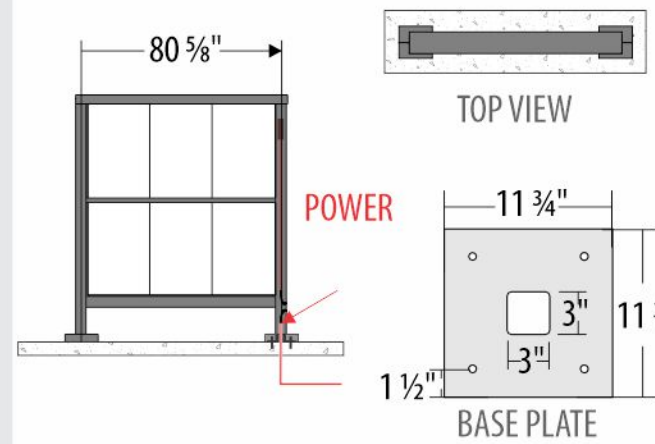
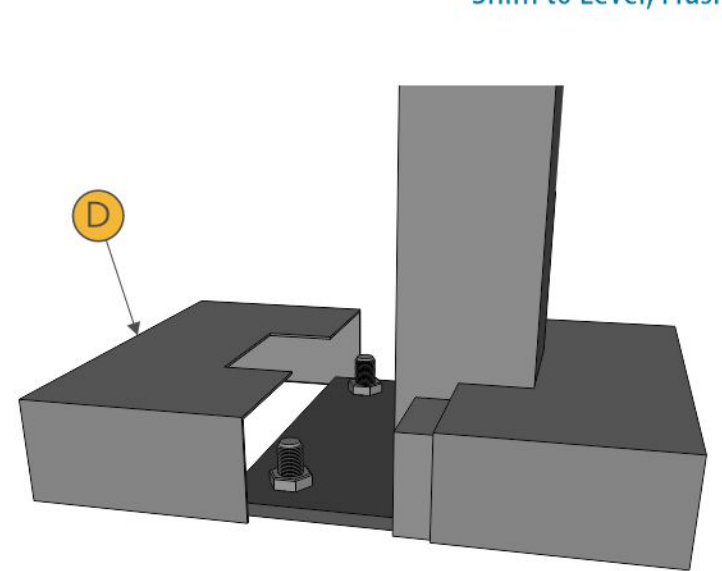
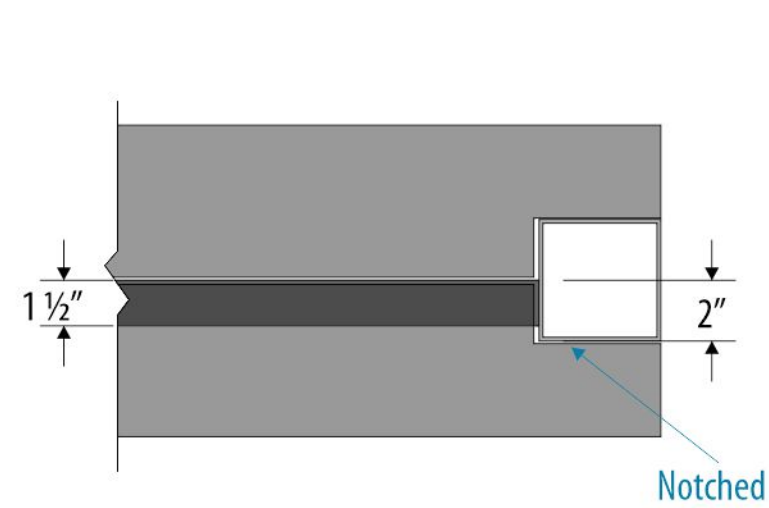
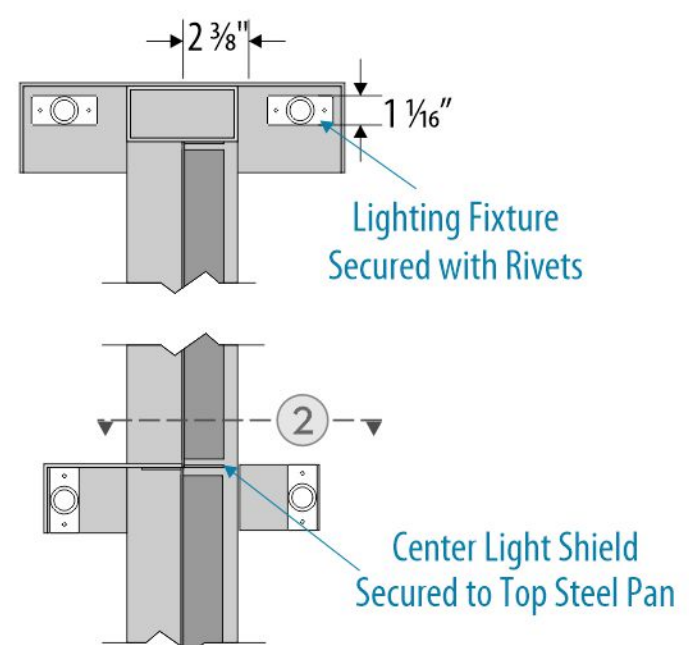
2-Sided Internally Illuminated Menu

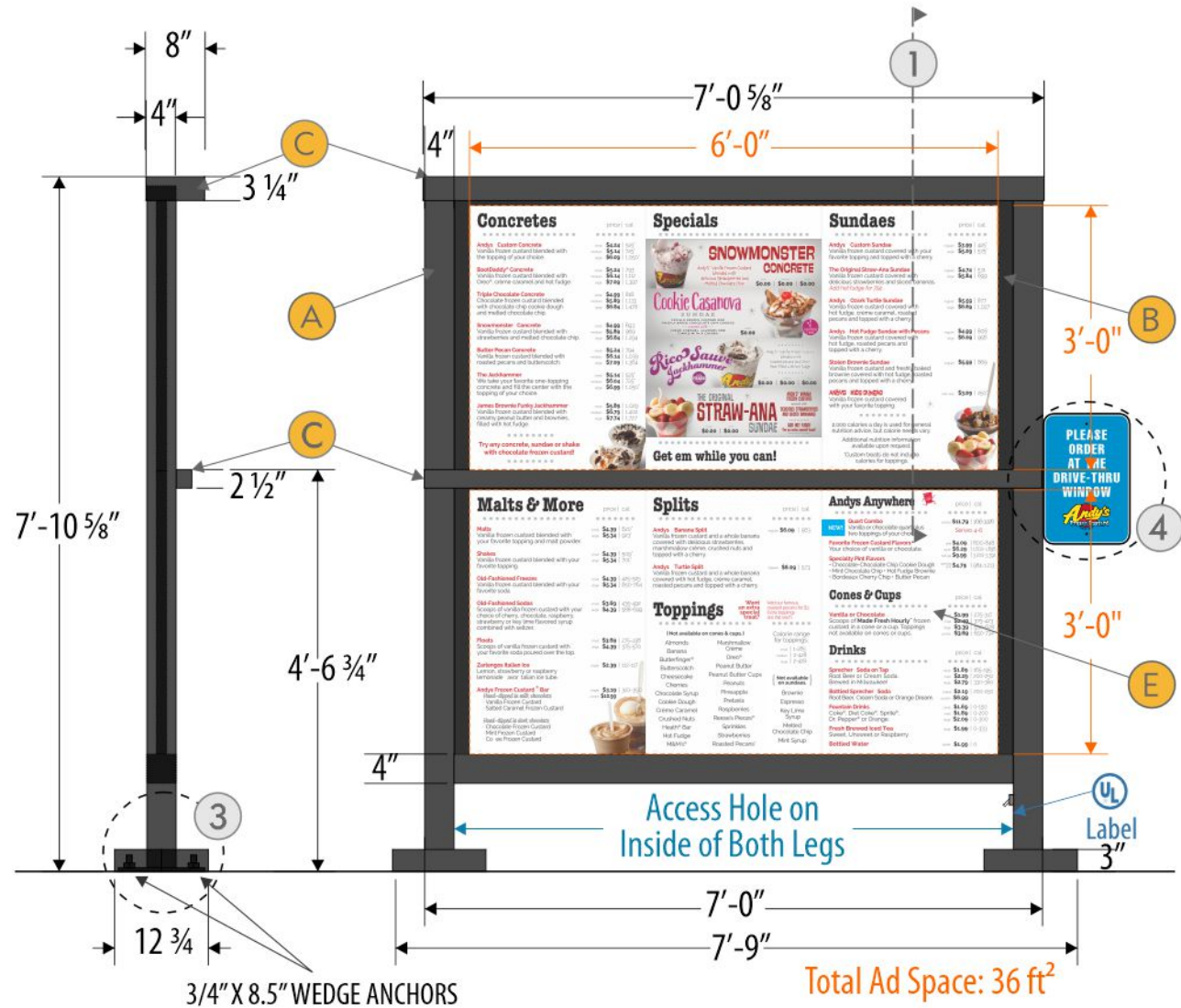
- A** Painted 4" Aluminum Tube Frame
 - Paint - Black (Satin)
- B** Painted Steel Pan Magnet Backer
 - Paint - Black (Satin)
- C** Fabricated Aluminum Light Shield
- D** Bolt Covers Painted to Match
- E** Magnetic Menu Panels by Others
- ▶** Electrical Requirements - 120V; 4A

1 - CROSS-SECTION VIEW SCALE: NTS

2 - MIDDLE LIGHT SHIELD SCALE: NTS

3 - BASEPLATE COVER SCALE: NTS

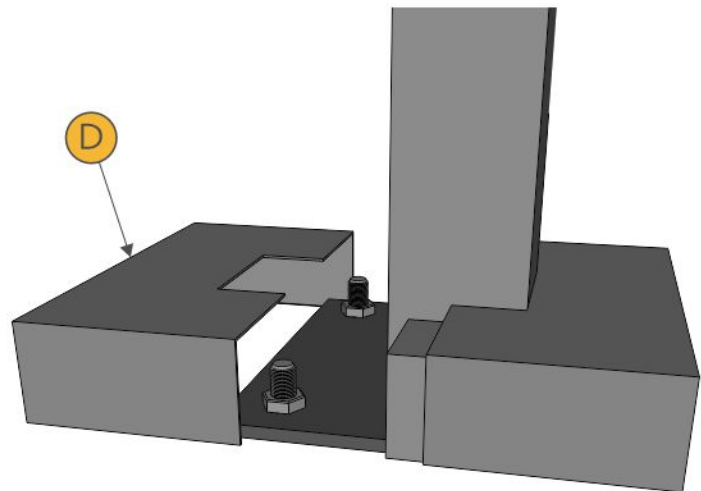
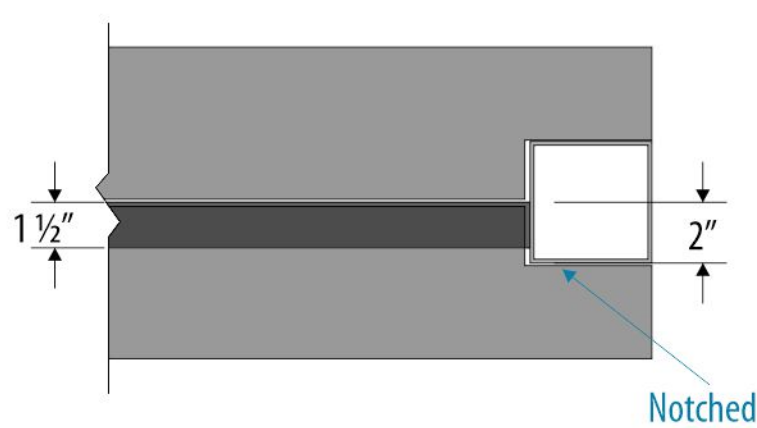
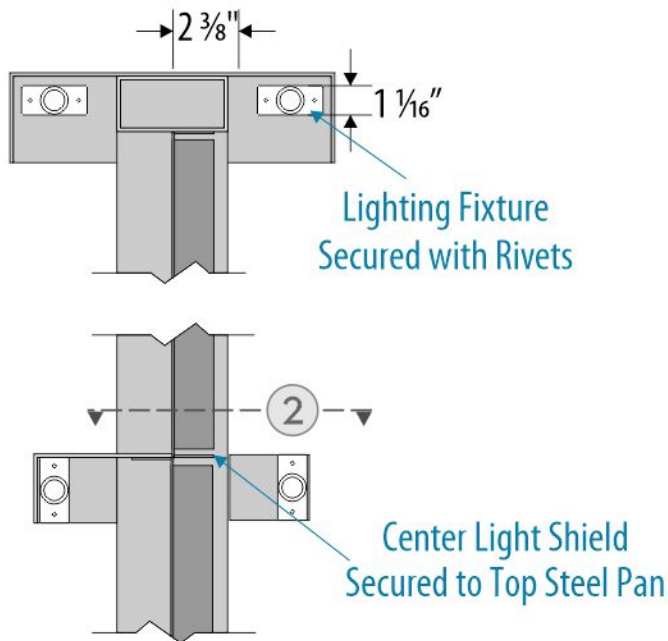




1 - CROSS-SECTION VIEW SCALE: NTS

2 - MIDDLE LIGHT SHIELD SCALE: NTS

3 - BASEPLATE COVER SCALE: NTS



ANDY'S FROZEN CUSTARD - MASTER
CUSTOMER

AFC-STND-MENU-1-SS AS SHOWN
DRAWING NUMBER ELEVATION

03.17.22
DATE REVISED

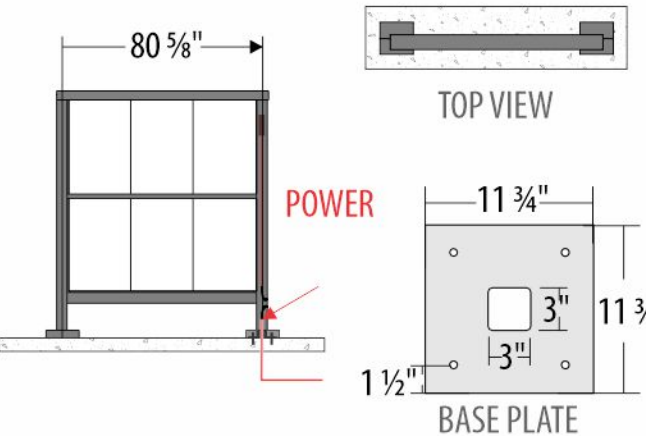
DEREK CROUCH TIM SWAIM
DESIGNER PROJECT MANAGER

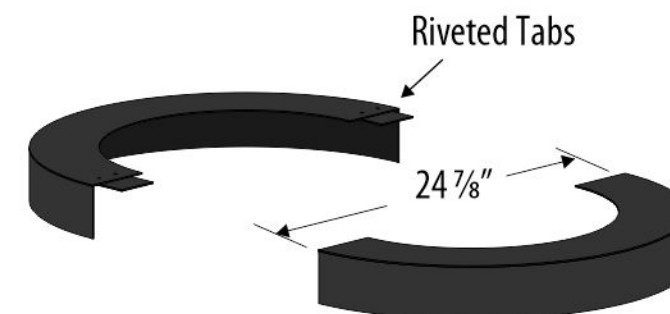
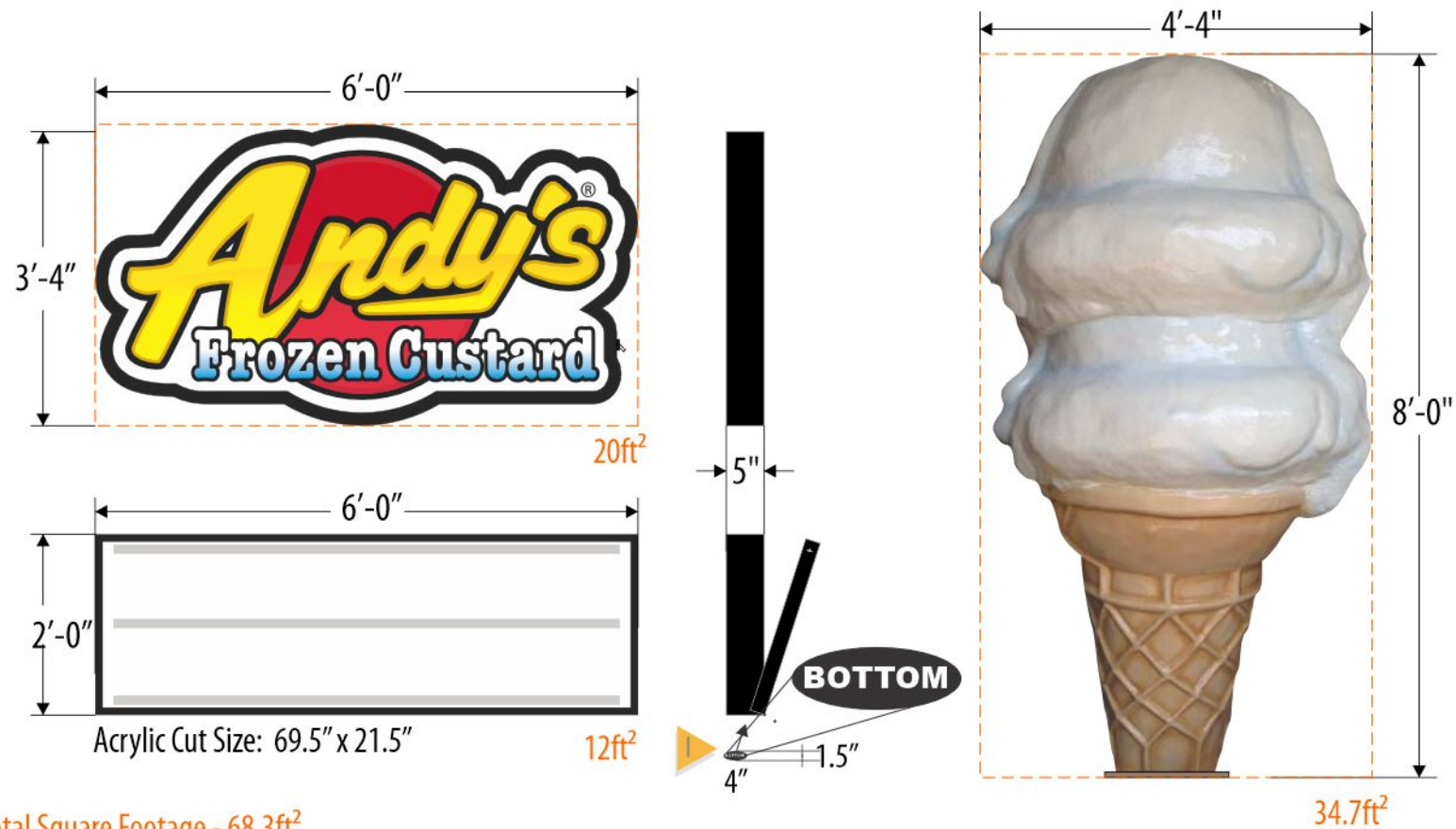
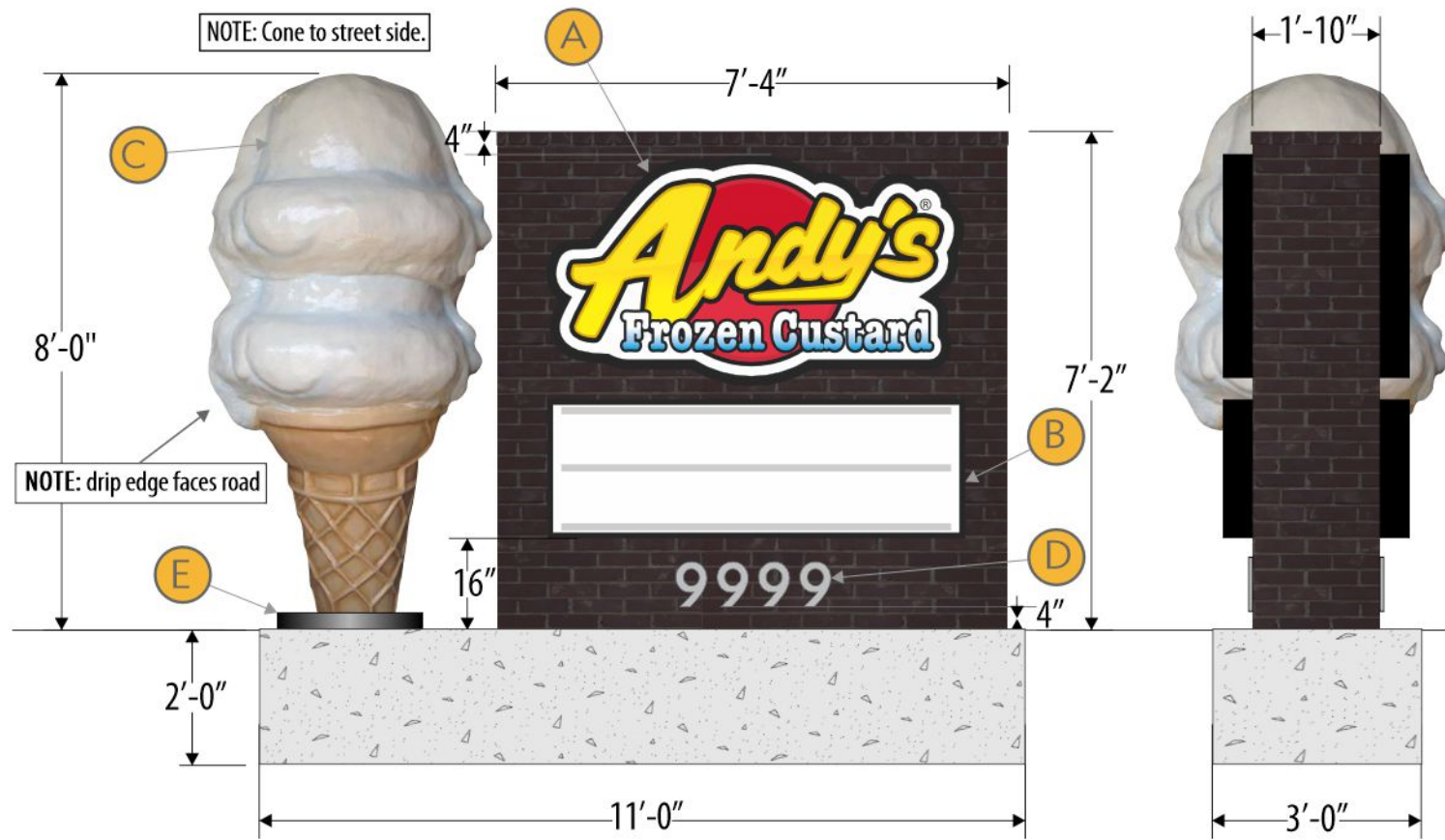
ALL
LOCATION

SCOPE OF WORK

1-Sided Internally Illuminated Menu

- A Painted 4" Aluminum Tube Frame
 - Paint - Black (Satin)
- B Painted Steel Pan Magnet Backer
 - Paint - Black (Satin)
- C Fabricated Aluminum Light Shield
- D Bolt Covers Painted to Match
- E Magnetic Menu Panels by Others
- F .080 Aluminum "Drive Thru" Sign
- G Painted .080 Aluminum Bracket
 - Paint - Black (Satin)
- ▶ Electrical Requirements - 120V; 2A





ANDY'S FROZEN CUSTARD

CUSTOMER

AFC-STND-MONU-1

AS SHOWN

DRAWING NUMBER

ELEVATION

08.02.22

DATE REVISED

DEREK CROUCH

TIM SWAIM

DESIGNER

PROJECT MANAGER

ALL

LOCATION

SCOPE OF WORK

2-Sided Monument w/ Full Cone

A LED Illuminated Contoured Aluminum Cabinet with Pan Embossed Backspray Painted Face

- Black (Gloss)
- See Logo Chart for Color Specs

B Flush Mounted 1-Sided LED Illuminated Cabinets

- Flat Face with 2 Line Letter Face, 2 Thumb Screw Latches per Retainer (4 Total) and Vandal Cover

- Black (Gloss)

C 3-D Fiberglass Cone Mounted to Monument Platform

D Painted 1/2" Acrylic FCO Address; Stud Mounted Flush to Monument Face

- MP 1vs953 Super Sparkle Silver (Satin)

E Aluminum Bolt/Flange Covers

- Black (Gloss)

F Qty. 2-100 pc. 8 on 9 Std Cond. Font Letters; Qty. 1-50 pc. 8 on 9 Std Cond. Font Punctuation Set

G Changeable Copy Letter Storage Cabinet

H Cast Lighting -Qty. 4 Fixtures by Others

I Vinyl Sticker To Call Out Bottom Of Cabinet

- Vinyl - White

Electrical Requirements - 120V; 7A

Total Square Footage - 68.3ft²

