



**TRANE**

Job Name: SAG  
Prepared For:  
Unit Tag: SAG 6T  
Quantity: 1

# Trane Precedent Heat Pump Packaged Rooftop

## Unit Overview - WHC074H3RGA\*\*D6C1A10600A0010000000000000

Application	Unit Size	Supply Fan		External Dimensions (in.)			Operating Weight		EER	IEER/SEER	Elevation
DX cooling	6 Ton (074)	Airflow	External Static Pressure	Height	Width	Length	Minimum	Maximum	12.10	16.50	0.00 ft
		2200 cfm	0.750 in H2O	3.91 ft	4.44 ft	7.39 ft	829.0 lb	1218.0 lb			

## Unit Features

Fresh Air Selection	Econ, D bulb 0-100% w/ baro rel 3 ph
SupplyFan/Drive/ MotorType	Single zone VAV
Panels/Filters	Hinged pnl/2 in pltd filters MERV 8-3 ph

## Unit Electrical

Voltage/phase/hertz	208-230/60/3
MCA	89.00 A
MOP	90.00 A
MCA (230 w/ Elec Heat)	96.00 A
MOP (230 w/ Elec Heat)	100.00 A



## Controls

Communications Option BACnet Communications Interface 3 ph

## Cooling Section

Cooling Section		Capacity	
Entering Dry Bulb	80.00 F	Gross Total	77.93 MBh
Entering Wet Bulb	67.00 F	Gross Sensible	56.70 MBh
Ambient Temp	95.00 F	Net Total	75.95 MBh
Leaving Coil Dry Bulb	54.74 F	Net Sensible	54.72 MBh
Leaving Coil Wet Bulb	54.66 F	Fan Motor Heat	0.77 MBh
Leaving Unit Dry Bulb	56.94 F	Refrig Charge-circuit 1	14.5 lb
Leaving Unit Wet Bulb	55.90 F		

## Heating Section

Heat Pump Mode		Secondary Heat	
Output Heating Capacity	73.55 MBh	Heat Type	Electric
Output Heating Capacity with Fan	74.32 MBh	Heating Capacity	18 kW3ph@240,480,600 derate to unit volt
Heating Delta T	30.96 F	Electric Heat Output	61.47 MBh
Heating EAT	60.00 F	Electric Heat Air Temp Rise	25.73 F
Heating Ambient Temp	47.00 F		
Heating Ambient WB	42.60 F		
Heating Ambient Relative Humidity	70.00 %		

## Fan Section

Indoor Fan Data		Outdoor Fan Data	
Type	BC Plenum	Type	Propeller
Drive Type	Variable Direct	Fan Quantity	1
Evap Fan FLA	7.30 A	Drive Type	Direct
Indoor Fan Performance		Outdoor Fan Performance	
Airflow	2200 cfm	Condenser Fan FLA	3.30 A
Design ESP	0.750 in H2O		
Component SP	0.153 in H2O		
Total SP	0.913 in H2O		
Supply Motor Horsepower	2.750 hp		
Indoor Motor Operating Power	0.55 bhp		
Indoor RPM	962 rpm		

## Compressor Section

Power	2.93 kW
Circuit 1 RLA	14.20 A
Circuit 2 RLA	13.20 A

## Accessories

Zone sensors	Programmable Zone Sensor - Title 24 V
--------------	---------------------------------------

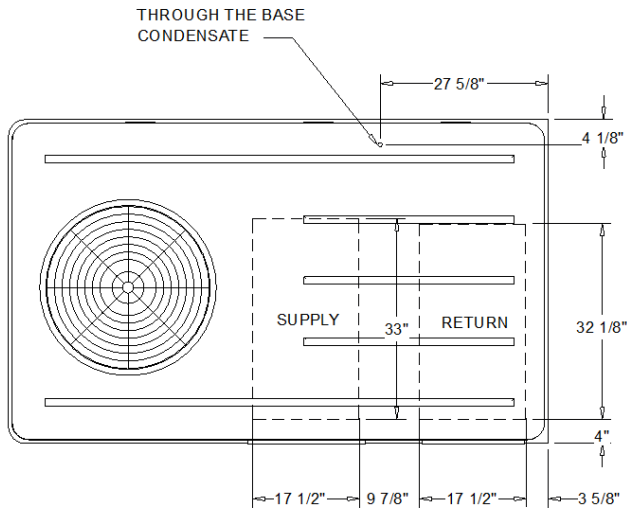
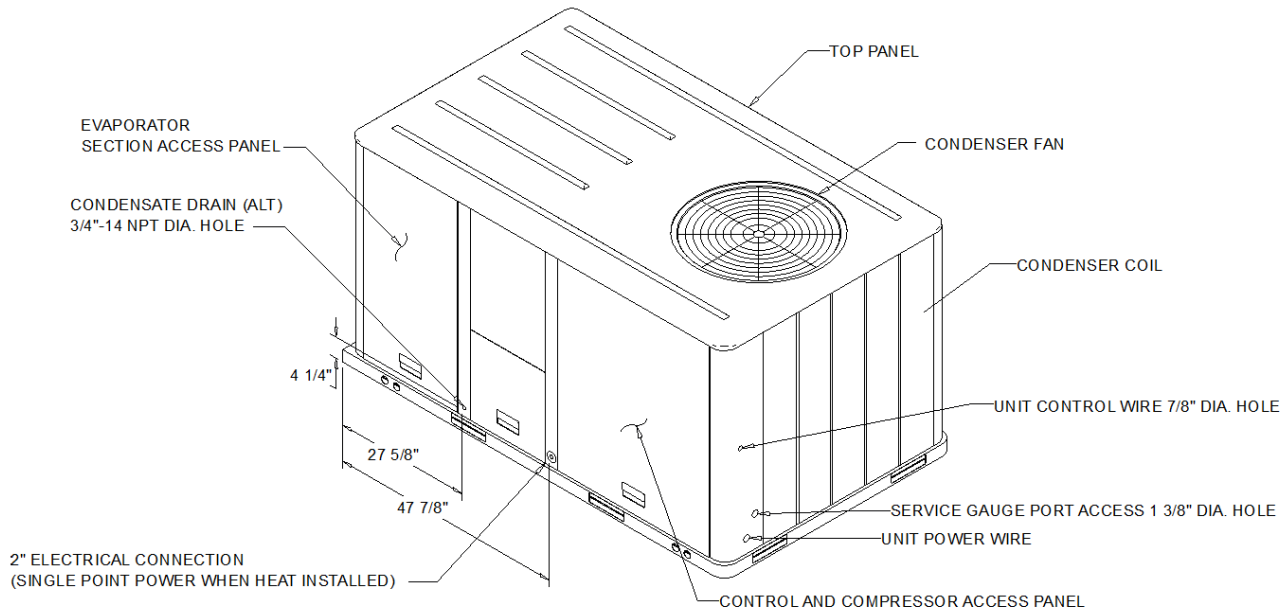
Acoustics								
Sound Path	63 Hz	125 Hz	250 Hz	500 Hz	1 kHz	2 kHz	4 kHz	8 kHz
Ducted Discharge	85 dB	75 dB	69 dB	65 dB	58 dB	55 dB	54 dB	53 dB
Ducted Inlet	86 dB	71 dB	65 dB	57 dB	53 dB	50 dB	48 dB	44 dB
Outdoor Noise	87 dB	90 dB	85 dB	85 dB	81 dB	76 dB	72 dB	66 dB

Warranty	
Compressor parts warranty	Year 6-10 compressor warranty
Labor warranty (first year)	1st Year Labor warranty



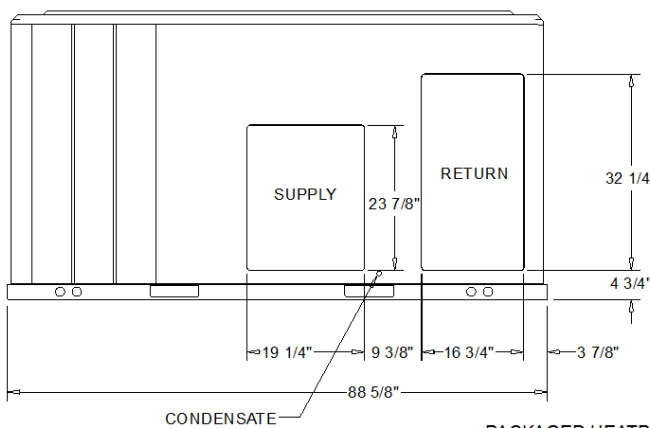
**TRANE**

Job Name: SAG  
Prepared For:  
Unit Tag: SAG 6T  
Quantity: 1

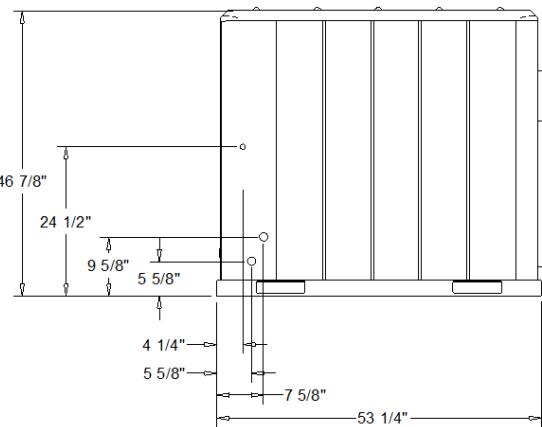


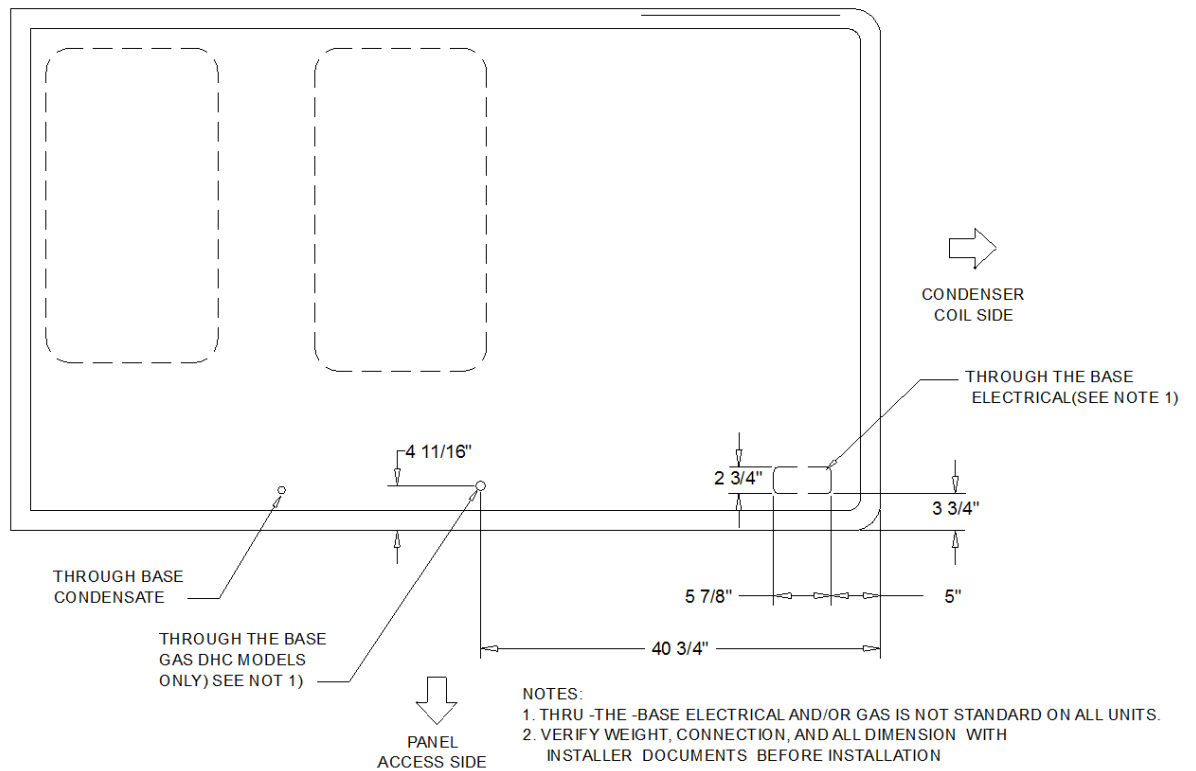
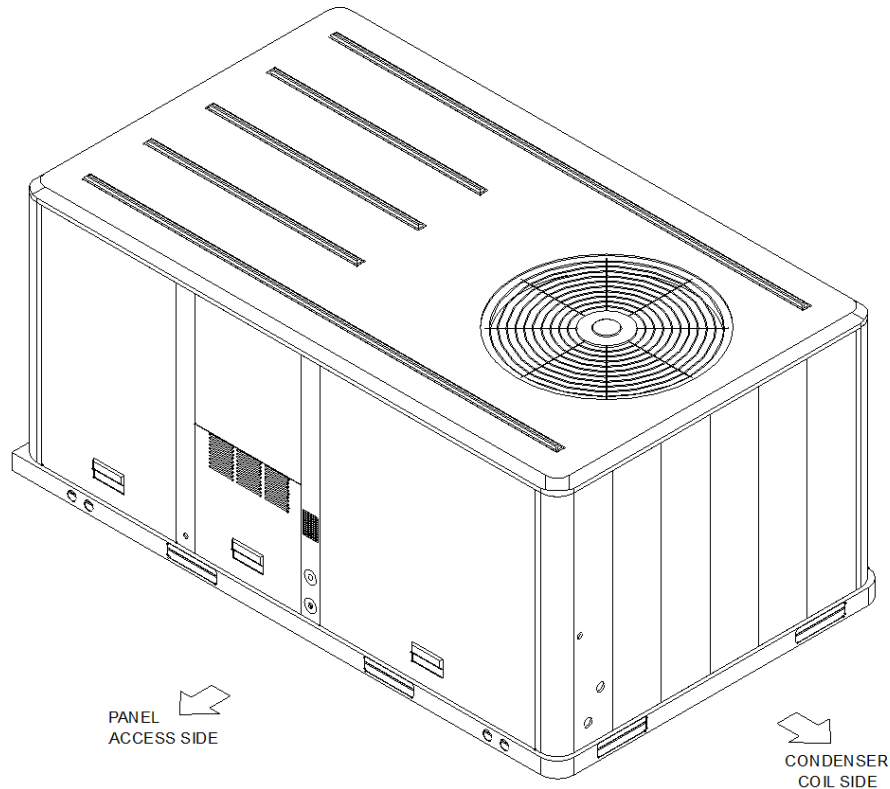
PLAN VIEW UNIT  
DIMENSION DRAWING

- NOTES:
1. THRU -THE -BASE ELECTRICAL IS NOT STANDARD ON ALL UNITS.
  2. VERIFY WEIGHT, CONNECTION, AND ALL DIMENSION WITH INSTALLER DOCUMENTS BEFORE INSTALLATION



PACKAGED HEATPUMP  
DIMENSION DRAWING





### THRU THE BASE UTILITIES

PLAN / ISO VIEW DRAWING

**ELECTRICAL / GENERAL DATA**

<b>GENERAL</b> (2)(4)(6) Model: WHC074H Oversized Motor Unit Operating Voltage: 187-256 Unit Primary Voltage: 208 MCA: Unit Secondary Voltage: 230 MFS: Unit Hertz: 60 MCB: Unit Phase: 3 EER 13.1 Standard Motor Field Installed Oversized Motor Minimum Circuit Ampacity: 42.0 MCA: Maximum Fuse Size: 50.0 MFS: Maximum (HACR) Circuit Breaker: 50.0 MCB:		<b>WITH HEATER</b> Heater kW Rating : 13.5/18.0 Stage: 1 MCA: 89.0/96.0 MFS: 90.0/100.0 MCB: 90.0/100.0  Oversized Motor Field Installed Oversized Motor MCA: MCA: MFS: MFS: MCB: MCB:	
<b>INDOOR MOTOR</b> Standard Motor Outsized Motor Field Installed Oversized Motor Number: 1 Number: Number: Horsepower: 2.75 Horsepower: Motor Speed (RPM): - Motor Speed (RPM): Phase: 1 Phase: Full Load Amps: 7.3 Full Load Amps: Locked Rotor Amps: - Locked Rotor Amps:			
<b>COMPRESSOR</b> Circuit 1/2 Number: 2 Horsepower: 2.3/4.5 Phase: 3 Rated Load Amps: 14.2/13.2 Locked Rotor Amps: -		<b>OUTDOOR MOTOR</b> Number: 1 Horsepower: 0.7 Motor Speed (RPM): 1100 Phase: 3 Full Load Amps: 3.3 Locked Rotor Amps: -	
<b>POWER EXHAUST ACCESSORY</b> (3,7) (Field Installed Power Exhaust) Phase: N/A Horsepower: N/A Motor Speed (RPM): N/A Full Load Amps: N/A Locked Rotor Amps: N/A	<b>FILTERS</b> Type: Throwaway Furnished: Yes Number 4 Recommended 20"x25"x2"		<b>REFRIGERANT</b> (2) Type Factory Charge Circuit #1 14.5 lb Circuit #2 -

**NOTES:**

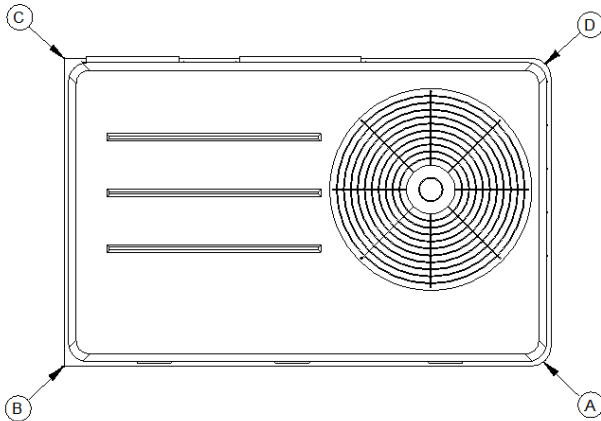
1. Maximum (HACR) Circuit Breaker sizing is for installations in the United States only.
2. Refrigerant charge is an approximate value. For a more precise value, see unit nameplate and service instructions.
3. Value does not include Power Exhaust Accessory.
4. Value includes oversized motor.
5. Value does not include Power Exhaust Accessory.
6. EER is rated at AHRI conditions and in accordance with DOE test procedures.
7. Installation of this power exhaust kit will affect unit level MCA and could affect MOP sizing having a direct impact on existing field wiring and unit protection devices. The change in MCA/MOP is the sole responsibility of the field installing party. Trane will not issue new nameplates as a result of this power exhaust accessory installation. FLA of the power exhaust kit option must be added to the MCA of the unit for building supply conductor sizing determination.

## INSTALLED ACCESSORIES NET WEIGHT DATA

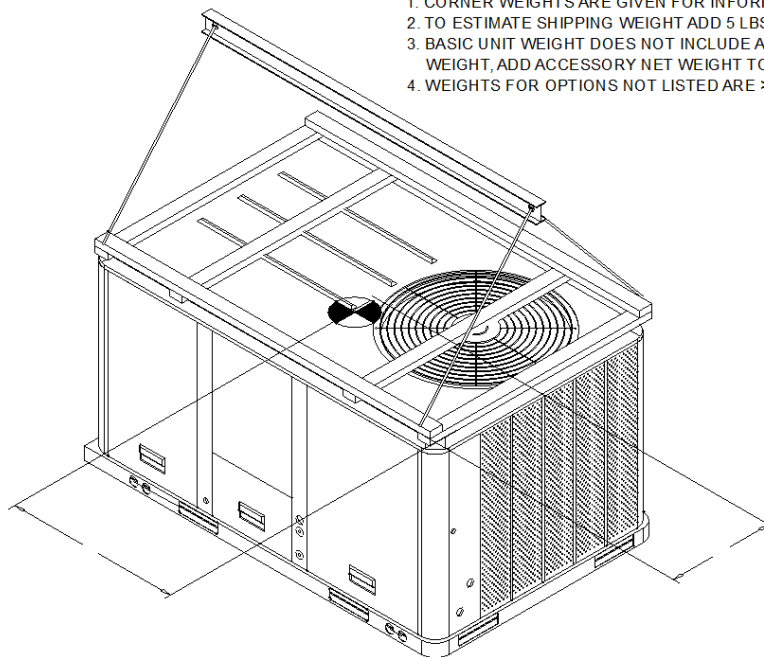
ACCESSORY				WEIGHTS			
ECONOMIZER				36.0 lb			
MOTORIZED OUTSIDE AIR DAMPER							
MANUAL OUTSIDE AIR DAMPER							
BAROMETRIC RELIEF							
OVERSIZED MOTOR							
BELT DRIVE MOTOR							
POWER EXHAUST							
HEATER				44.0 lb			
THROUGH THE BASE ELECTRICAL (FIOPS)				13.0 lb			
UNIT MOUNTED CIRCUIT BREAKER (FIOPS)							
UNIT MOUNTED DISCONNECT (FIOPS)				5.0 lb			
POWERED CONVENIENCE OUTLET (FIOPS)							
HINGED DOORS (FIOPS)				12.0 lb			
HAIL GUARD				20.0 lb			
SMOKE DETECTOR, SUPPLY / RETURN				7.0 lb			
ROOF CURB							
BASIC UNIT WEIGHTS		CORNER WEIGHTS			CENTER OF GRAVITY		
SHIPPING	NET	(A)	193.0 lb	(C)	65.0 lb	(E) LENGHT	(F) WIDTH
927.0 lb	829.0 lb	(B)	295.0 lb	(D)	276.0 lb	38"	22"

### NOTE:

1. CORNER WEIGHTS ARE GIVEN FOR INFORMATION ONLY.
2. TO ESTIMATE SHIPPING WEIGHT ADD 5 LBS TO NET WEIGHT.
3. BASIC UNIT WEIGHT DOES NOT INCLUDE ACCESSORY WEIGHT. TO OBTAIN TOTAL WEIGHT, ADD ACCESSORY NET WEIGHT TO BASIC UNIT WEIGHT.
4. WEIGHTS FOR OPTIONS NOT LISTED ARE >5 LBS.



**PACKAGED HEAT PUMP**  
CORNER WEIGHT



**PACKAGED HEAT PUMP**  
RIGGING AND CENTER OF GRAVITY



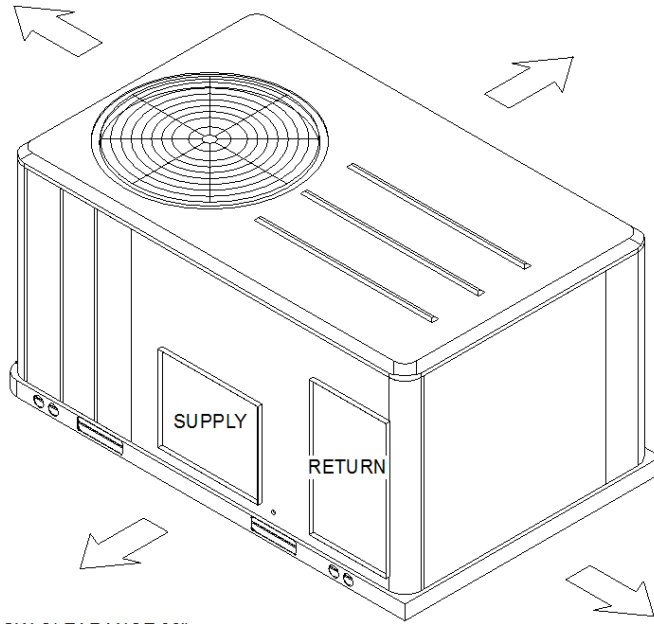
**TRANE®**

Job Name: SAG  
Prepared For:  
Unit Tag: SAG 6T  
Quantity: 1

CLEARANCE 36"

CLEARANCE FROM TOP OF UNIT 72"

CLEARANCE 48"



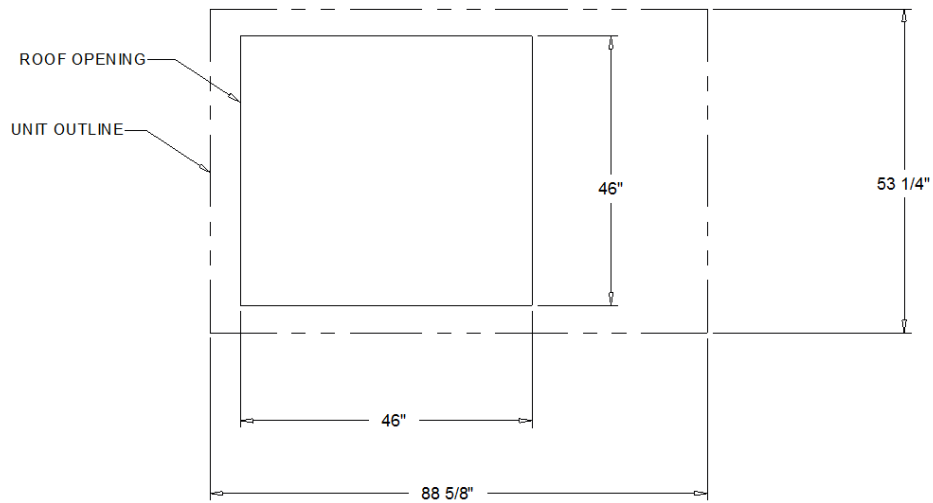
DOWNFLOW CLEARANCE 36"

HORIZONTAL CLEARANCE 18"

CLEARANCE 36"

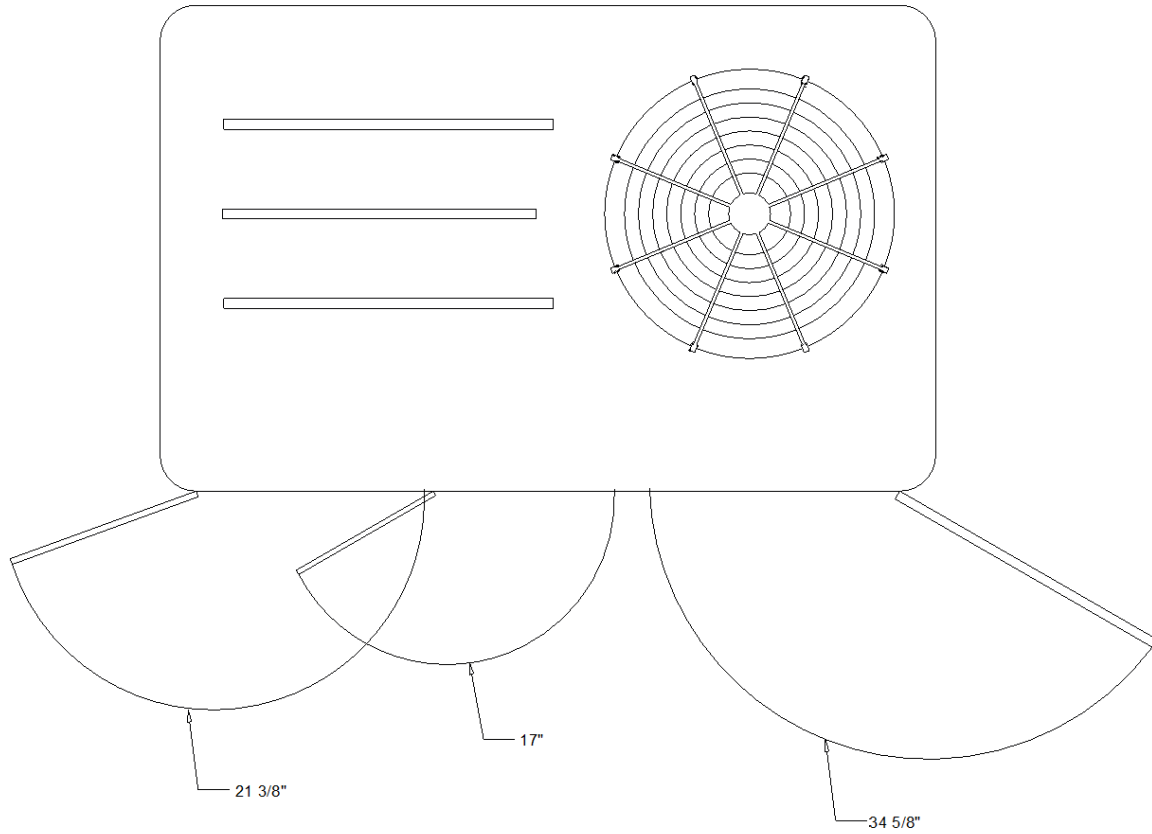
#### PACKAGED HEAT PUMP

CLEARANCE



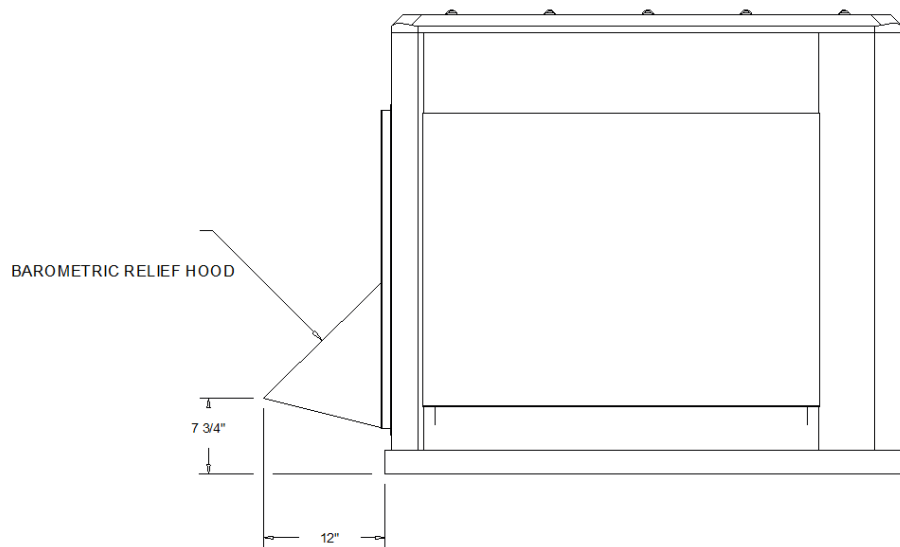
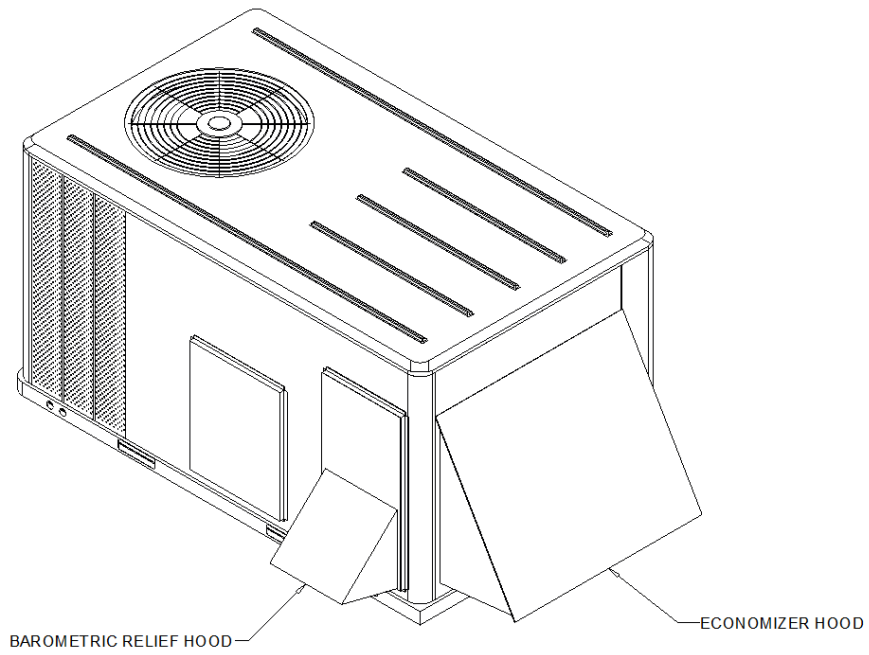
#### PACKAGED HEAT PUMP

DOWNFLOW TYPICAL ROOF OPENING



SWING DIAMETER - HINGED DOOR(S) OPTION



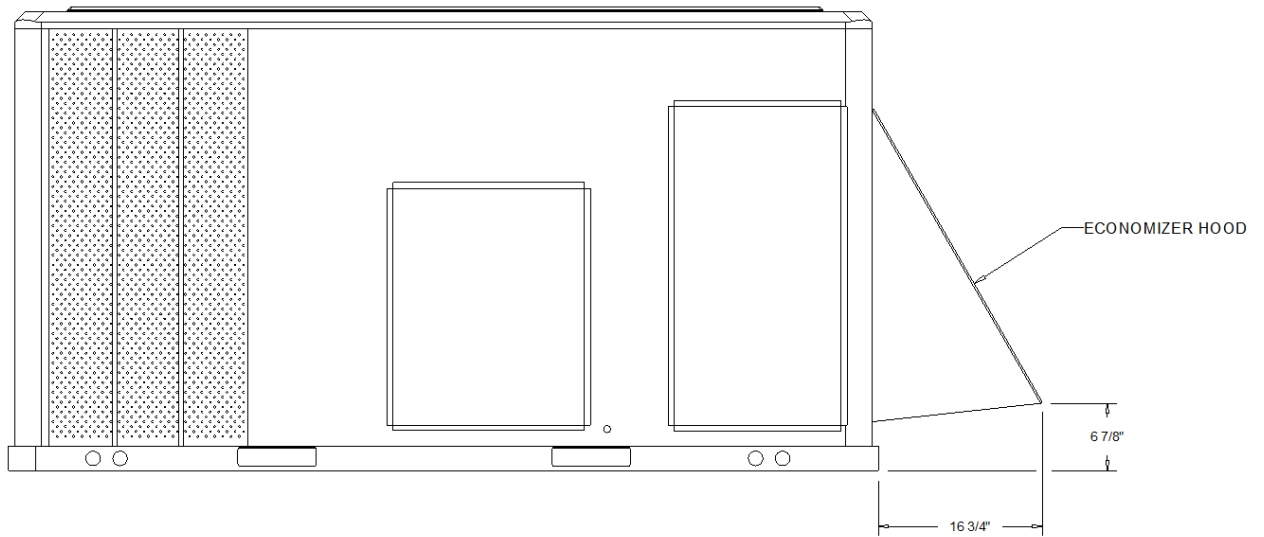
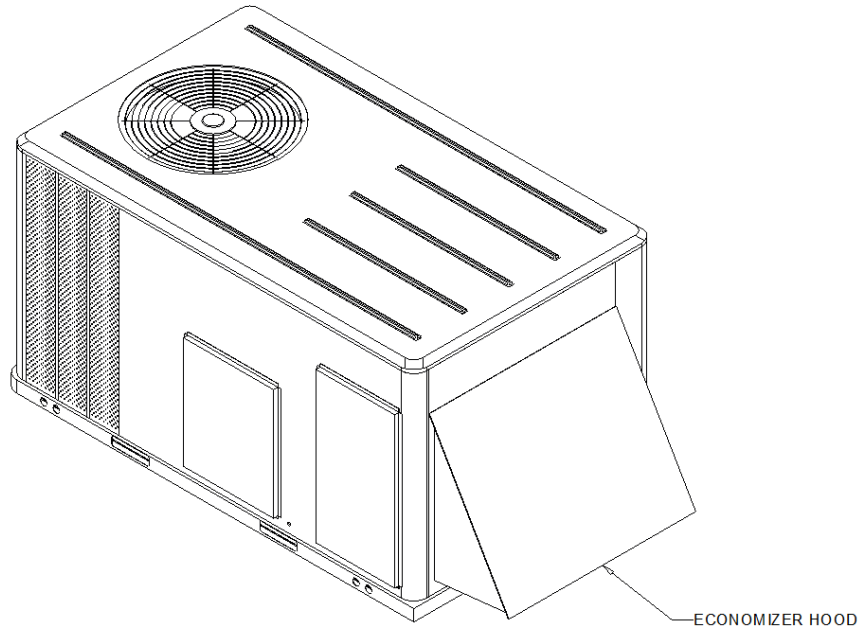


ACCESSORY - BAROMETRIC RELIEF DAMPER HOOD



**TRANE**

Job Name: SAG  
Prepared For:  
Unit Tag: SAG 6T  
Quantity: 1



ACCESSORY - ECONOMIZER HOOD