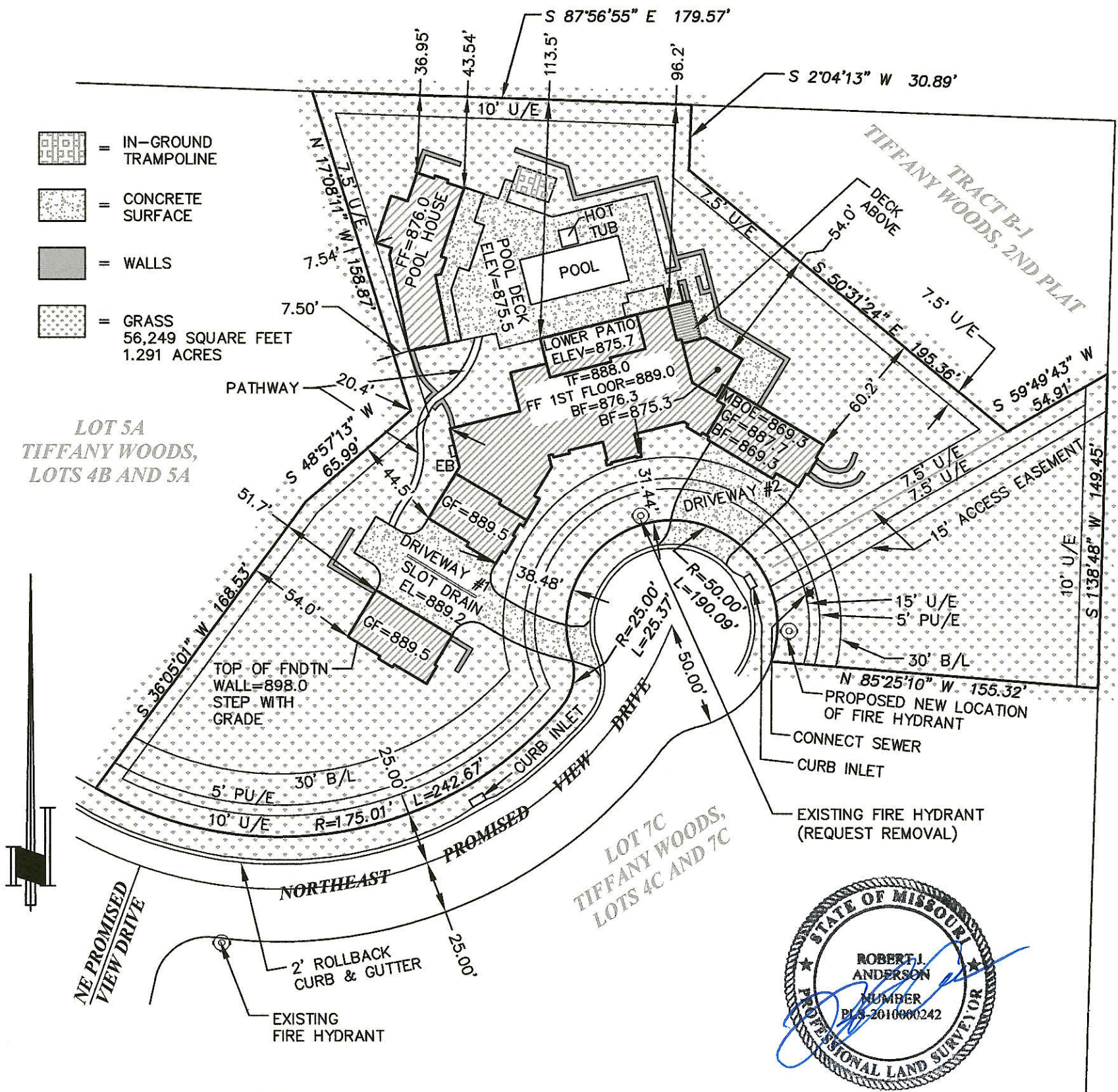


DESCRIPTION:

LOT 4C, TIFFANY WOODS, LOTS 4C AND 7C, A SUBDIVISION IN LEE'S SUMMIT, JACKSON COUNTY, MISSOURI.

ADDRESS: 512 NE PROMISED VIEW DRIVE, LEE'S SUMMIT, MISSOURI 64064



LEGEND	
B/L	BUILDING SETBACK LINE
PU/E	PRIVATE UTILITY EASEMENT
U/E	UTILITY EASEMENT (PUBLIC)
BF	BASEMENT FLOOR ELEVATION
EB	ELECTRICAL BOX
FF	FINISHED FLOOR ELEVATION
GF	GARAGE FLOOR ELEVATION
SP	SUPPORT POST
TF	TOP OF FOUNDATION ELEVATION
MBOE	MINIMUM BUILDING OPENING ELEVATION
→	DRAINAGE DIRECTION ARROW

DRIVEWAYS

DRIVEWAY #1	
WIDTH AT CURB	26.9'
WIDTH AT GARAGES	40.0'
DRIVEWAY #2	
WIDTH AT CURB (WEST)	34.0'
WIDTH AT GARAGE	46.0'

BASEMENT TYPE: WALKOUT

BUILDING & PROPERTY ELEVATIONS

THE BUILDING CORNER AND PROPERTY CORNER ELEVATIONS ARE EXISTING AND FINISHED, UNLESS NOTED OTHERWISE (EX = EXISTING, FN = FINISHED)

NOTE: THE CONTOUR LINES SHOWN HEREON WERE TAKEN FROM A SURVEY BY PHELPS ENGINEERING, INC. DATED MARCH 20, 2020 WITH MODIFICATIONS FROM A SKETCH BY STARR DEVELOPMENT.

PLOT PLAN

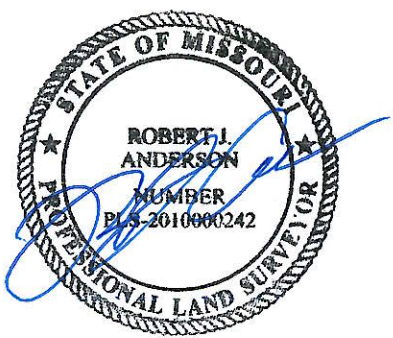
SHEET 1 OF 2



ANDERSON

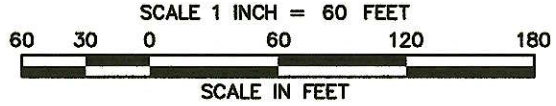
SURVEY COMPANY
1270 NE DELTA SCHOOL ROAD
LEE'S SUMMIT, MISSOURI 64064
(816) 246-5050

MISSOURI STATE CERTIFICATE OF AUTHORITY, 000076



4/14/2024
ROBERT J. ANDERSON
PLS #2010000242

AS-GRADED PLOT PLAN PER SEC. 7-160 CODE OF ORDINANCES IS REQUIRED PRIOR TO OCCUPANCY.



DESCRIPTION:

LOT 4C, TIFFANY WOODS, LOTS 4C AND 7C, A SUBDIVISION IN LEE'S SUMMIT, JACKSON COUNTY, MISSOURI.

ADDRESS: 512 NE PROMISED VIEW DRIVE, LEE'S SUMMIT, MISSOURI 64064

LEGEND

B/L	BUILDING SETBACK LINE
PU/E	PRIVATE UTILITY EASEMENT
U/E	UTILITY EASEMENT (PUBLIC)
BF	BASEMENT FLOOR ELEVATION
EB	ELECTRICAL BOX
FF	FINISHED FLOOR ELEVATION
GF	GARAGE FLOOR ELEVATION
SP	SUPPORT POST
TF	TOP OF FOUNDATION ELEVATION
MBOE	MINIMUM BUILDING OPENING ELEVATION
➔	DRAINAGE DIRECTION ARROW

DRIVEWAYS

DRIVEWAY #1	
WIDTH AT CURB	26.9'
WIDTH AT GARAGES	40.0'

DRIVEWAY #2	
WIDTH AT CURB (WEST)	34.0'
WIDTH AT GARAGE	46.0'

BASEMENT TYPE: WALKOUT

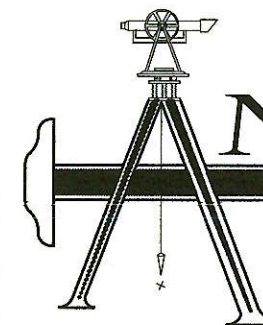
BUILDING & PROPERTY ELEVATIONS

THE BUILDING CORNER AND PROPERTY CORNER ELEVATIONS ARE EXISTING AND FINISHED, UNLESS NOTED OTHERWISE (EX = EXISTING, FN = FINISHED)

NOTE: THE CONTOUR LINES SHOWN HEREON WERE TAKEN FROM A SURVEY BY PHELPS ENGINEERING, INC. DATED MARCH 20, 2020 WITH MODIFICATIONS FROM A SKETCH BY STARR DEVELOPMENT.

PLOT PLAN

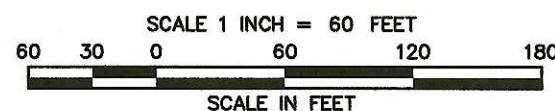
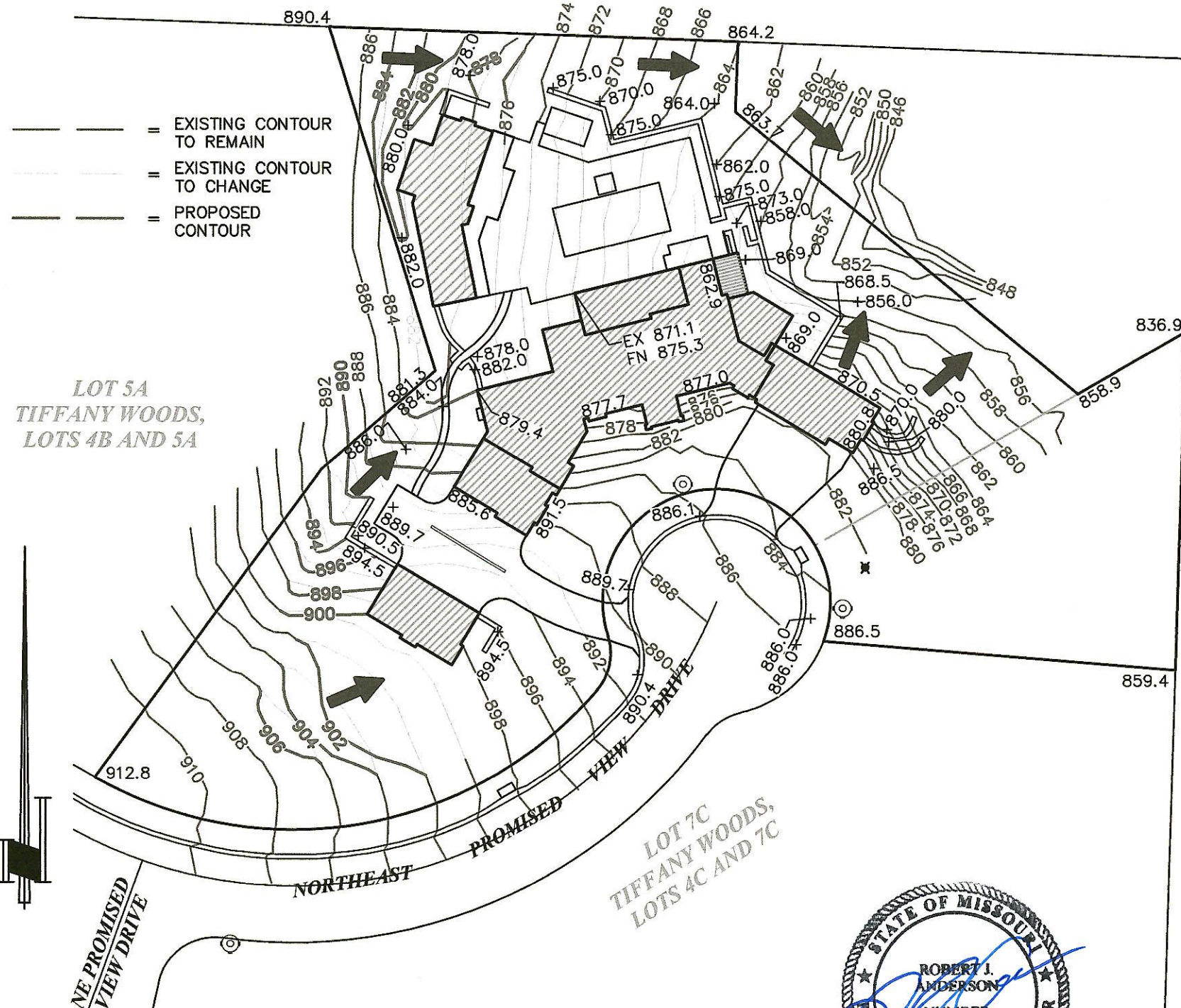
SHEET 2 OF 2



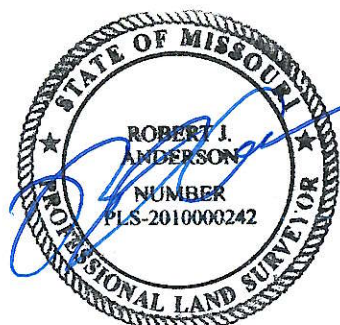
ANDERSON

SURVEY COMPANY
1270 NE DELTA SCHOOL ROAD
LEE'S SUMMIT, MISSOURI 64064
(816) 246-5050

MISSOURI STATE CERTIFICATE OF AUTHORITY, 000076



AS-GRADED PLOT PLAN PER SEC. 7-160 CODE OF ORDINANCES IS REQUIRED PRIOR TO OCCUPANCY.



4/4/2024
ROBERT J. ANDERSON
PLS #2010000242