

RESOLUTION NO. 2024-01

A RESOLUTION OF THE PLANNING COMMISSION OF THE CITY OF LEE'S SUMMIT, MISSOURI, AMENDING THE LEE'S SUMMIT IGNITE COMPREHENSIVE PLAN.

WHEREAS, pursuant to Sections 89.340 to 89.380, RSMo., a municipality is authorized to make, adopt, amend, and carry out a city plan for the physical development and uses of land and for the general location, character and extent of streets and other public ways within its corporate limits; and

WHEREAS, Section 89.360, RSMo., and Section 21-38 of the City's Code of Ordinances, provide that the Planning Commission may adopt and amend the plan as a whole or, as the work of making or amending the whole plan progresses, may from time to time adopt and amend a part or parts thereof, any part corresponding generally with one or more of the functional subdivisions of the subject matter of the plan; and

WHEREAS, the Planning Commission of the City of Lee's Summit, Missouri, adopted the Lee's Summit Ignite Comprehensive Plan as the Lee's Summit Comprehensive Plan, by Resolution dated May 20, 2021 ("Lee's Summit Ignite Comprehensive Plan"); and

WHEREAS, on March 9, 2024, the Planning Commission published notice in the *Lee's Summit Tribune and The Pulse* of the time and place of a public hearing on amending the Lee's Summit Ignite Comprehensive Plan Future Land Use Map (Appl. #PL2024-056), and conducted a public hearing on March 28, 2024; and

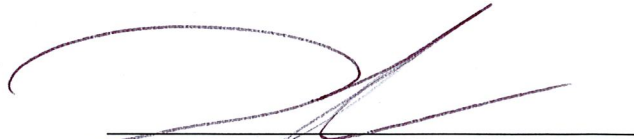
WHEREAS, Resolution No. 2021-01, adopting the Lee's Summit Ignite Comprehensive Plan, passed by the Planning Commission on May 20, 2021, is intended to be amended by this Resolution No. 2024-01.

NOW THEREFORE, BE IT RESOLVED BY THE CITY OF LEE'S SUMMIT PLANNING COMMISSION, as follows:

SECTION 1. That the Lee's Summit Ignite Comprehensive Plan, is hereby amended in accordance with Section 89.360, RSMo., and Section 21-38 of the City's Code of Ordinances. The Lee's Summit Ignite Comprehensive Plan Future Land Use Map shall reflect the change in future land use designations on lands described in **Exhibit A** and incorporated herein by reference.

SECTION 2. That the Chairperson and Secretary of the Planning Commission are authorized to affix their signatures to this Resolution, and a copy of the Ignite Comprehensive Plan shall be certified to the City Council of the City and the City Clerk; that a copy shall be provided to the Recorder of Deeds office in Jackson County, Missouri, and Cass County, Missouri, for public inspection during normal office hours; and, that a copy shall be available at the City Clerk's office for public inspection during normal office hours.

ADOPTED by the Planning Commission for the City of Lee's Summit, Missouri on the 28th day of March, 2024.



Donnie Funk, Chairperson
Planning Commission

ATTEST:



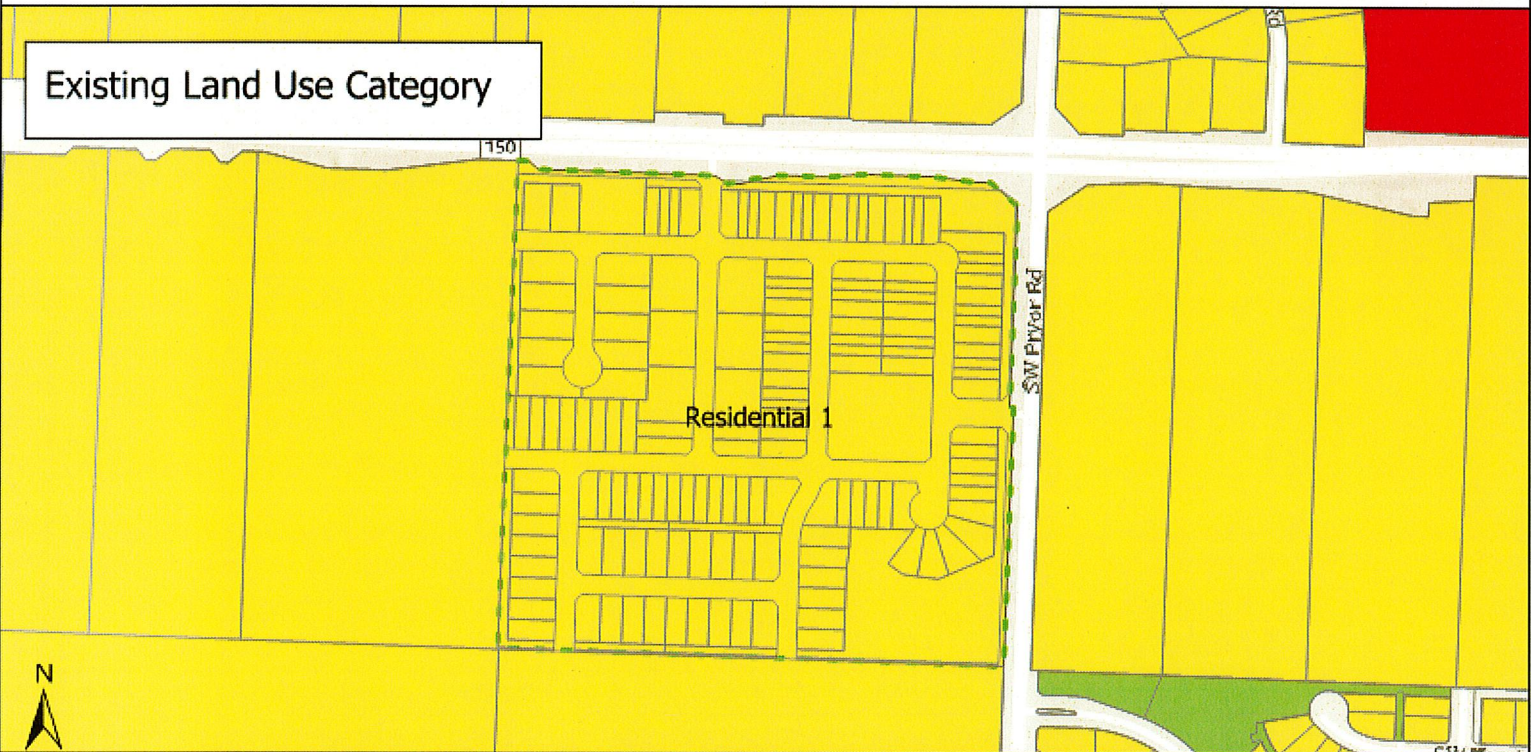
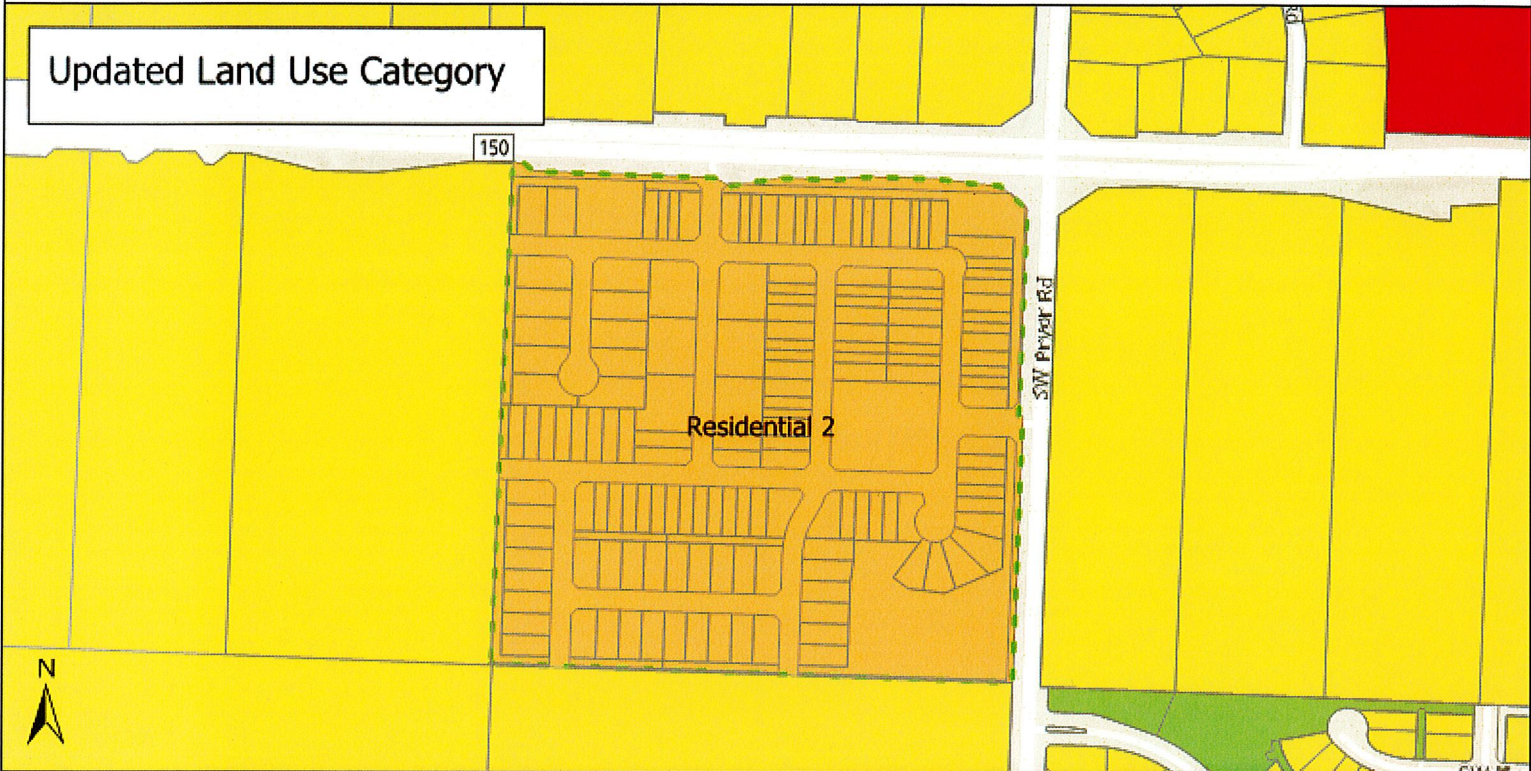
Cynda Rader, Secretary
Planning Commission

APPROVED AS TO FORM:



David Bushek, Chief Counsel
of Economic Development and Planning

Appl. #PL2024-056 - COMPREHENSIVE PLAN AMENDMENT
Future Land Use Map Update
City of Lee's Summit, Applicant



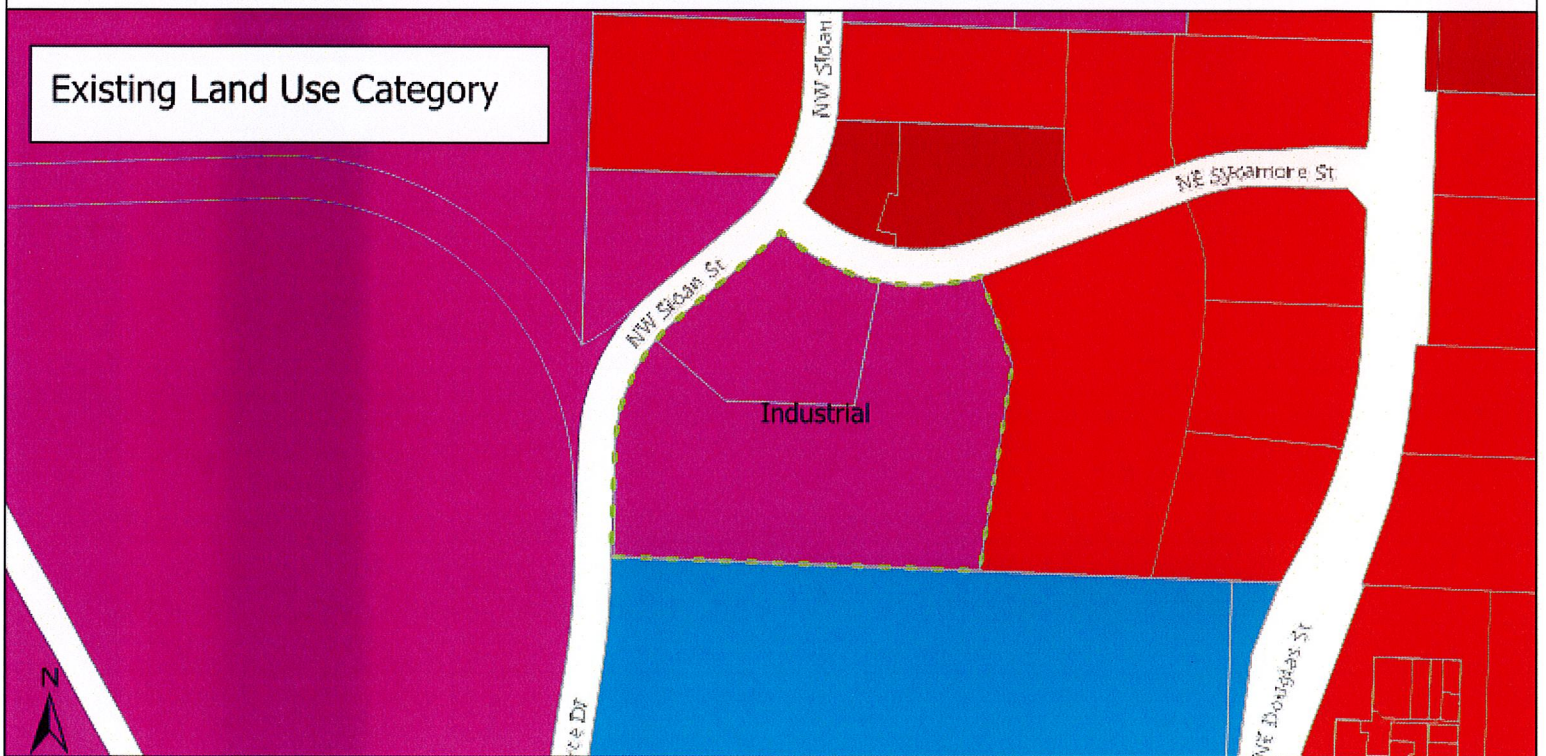
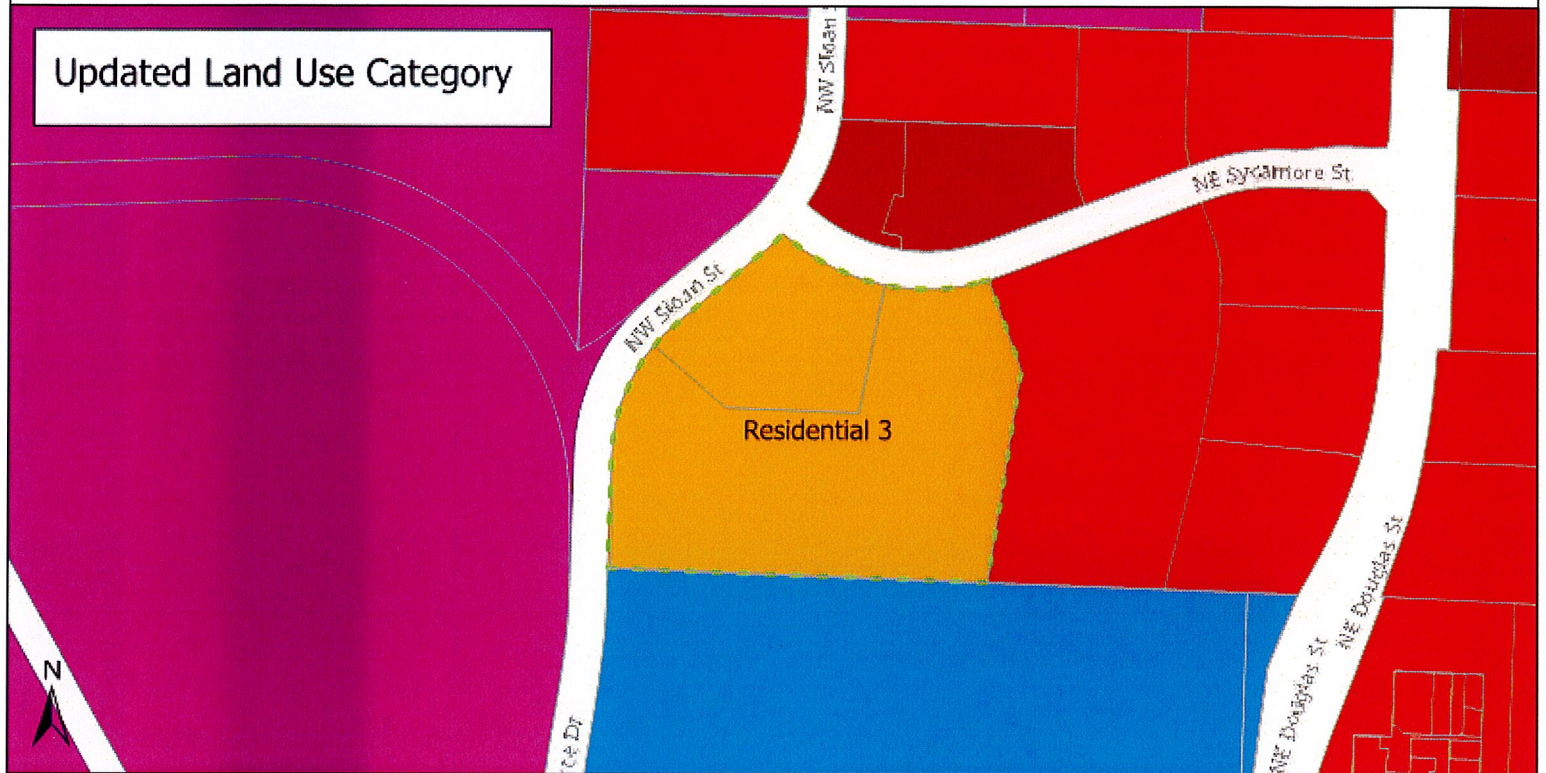
Osage residential development & Osage 3rd plat

- | | | | | |
|------------------------------|------------------------|----------------|------------------|--------------|
| Activity Center Downtown | Activity Center Summit | Industrial | Parks/Open Space | Water Bodies |
| Activity Center New Longview | Airport | Infrastructure | Residential 1 | |
| Activity Center North PRI | Civic | Mixed Use | Residential 2 | |
| Activity Center South PRI | Commercial | Office | Residential 3 | |

Appl. #PL2024-056 - COMPREHENSIVE PLAN AMENDMENT

Future Land Use Map Update

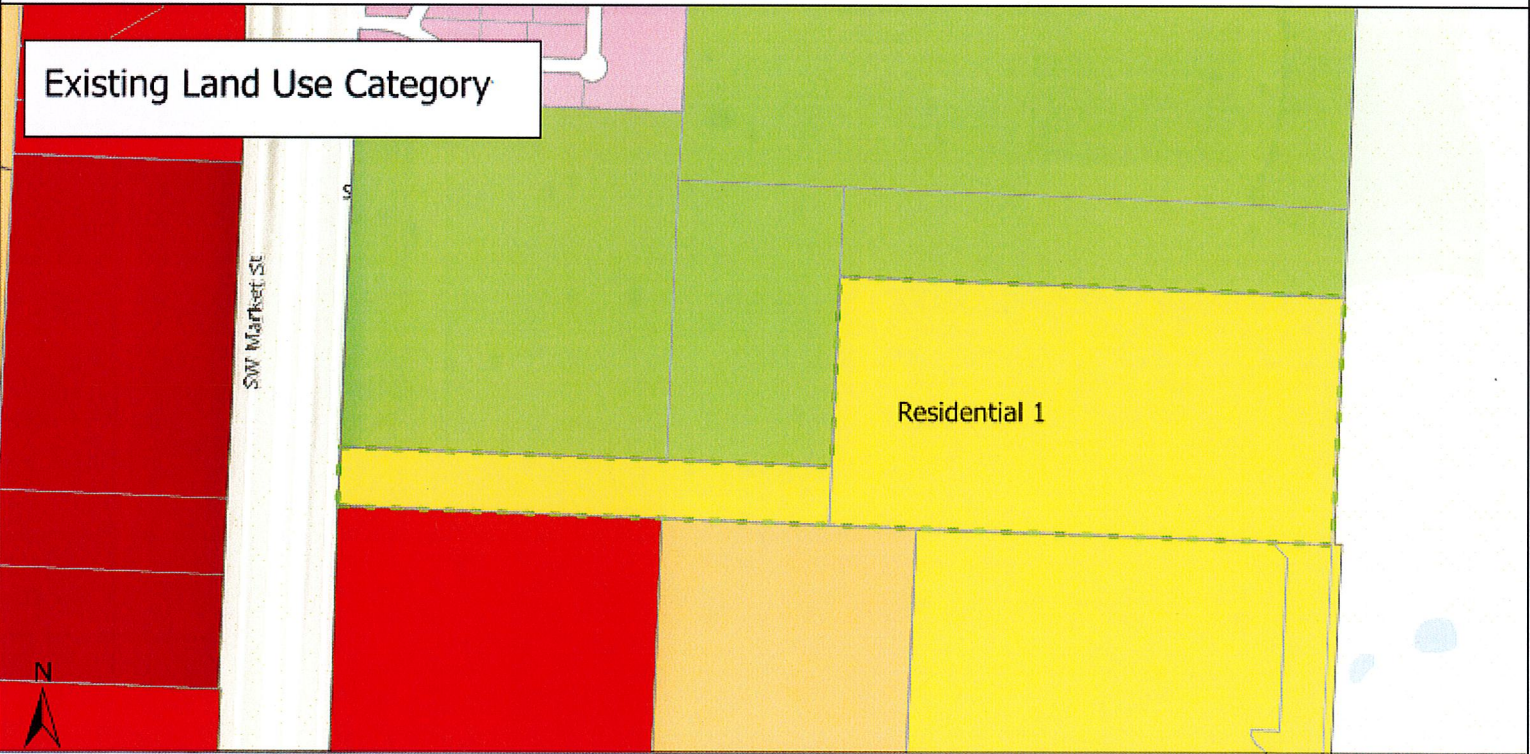
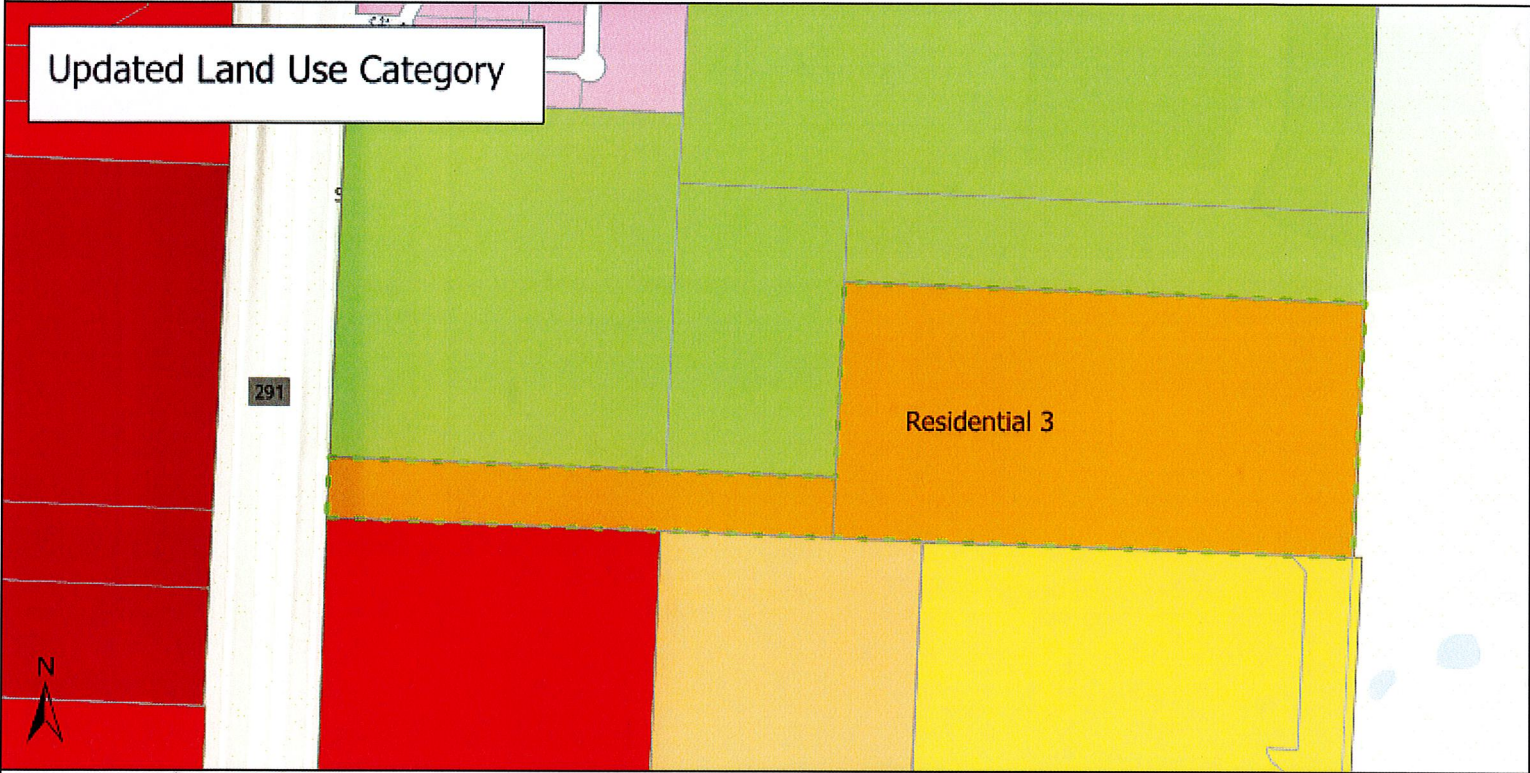
City of Lee's Summit, Applicant



Douglas Station Apartments



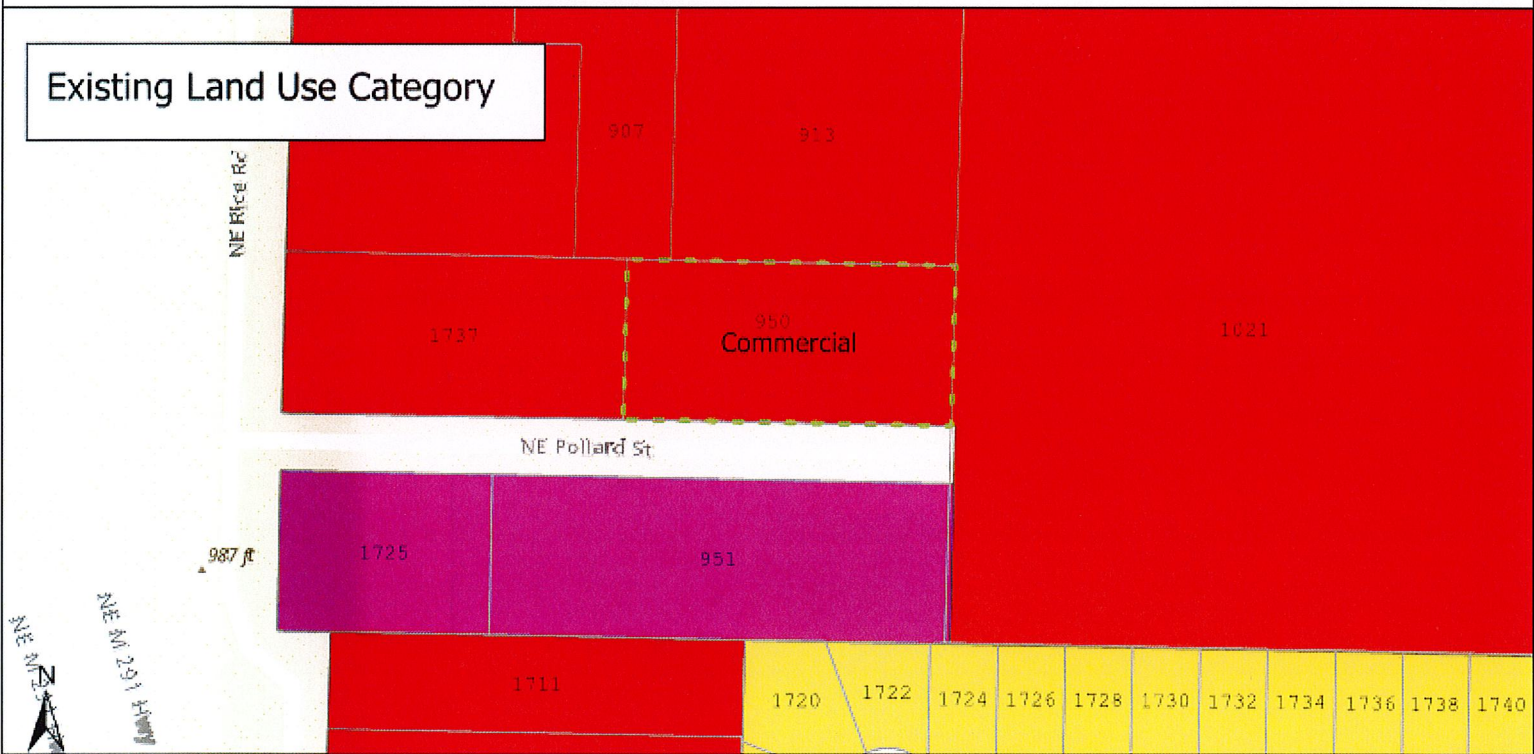
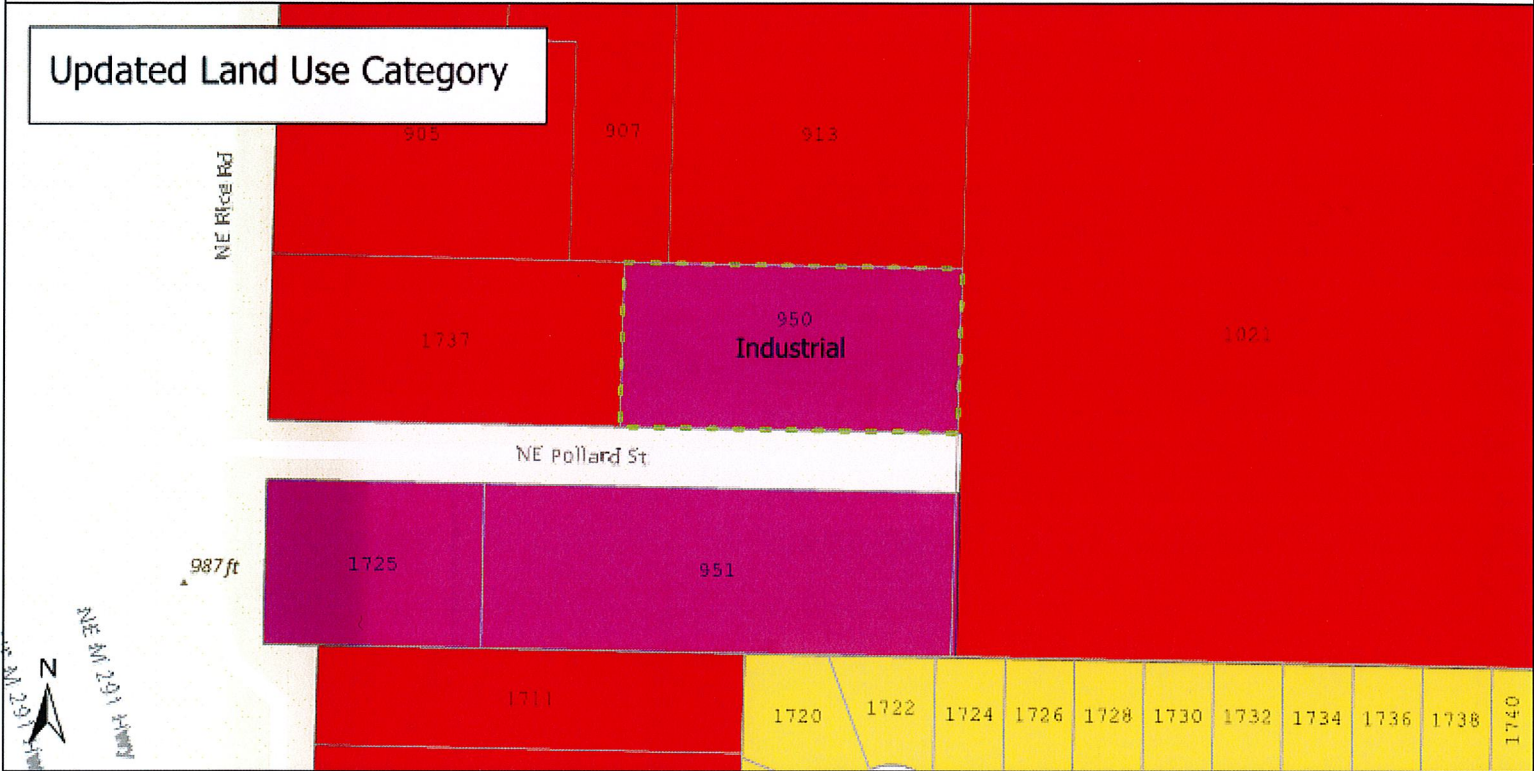
Appl. #PL2024-056 - COMPREHENSIVE PLAN AMENDMENT
Future Land Use Map Update
City of Lee's Summit, Applicant



Tristar

Activity Center Downtown	Activity Center Summit	Industrial	Parks/Open Space	Water Bodies
Activity Center New Longview	Airport	Infrastructure	Residential 1	
Activity Center North PRI	Civic	Mixed Use	Residential 2	
Activity Center South PRI	Commercial	Office	Residential 3	

Appl. #PL2024-056 - COMPREHENSIVE PLAN AMENDMENT
Future Land Use Map Update
City of Lee's Summit, Applicant



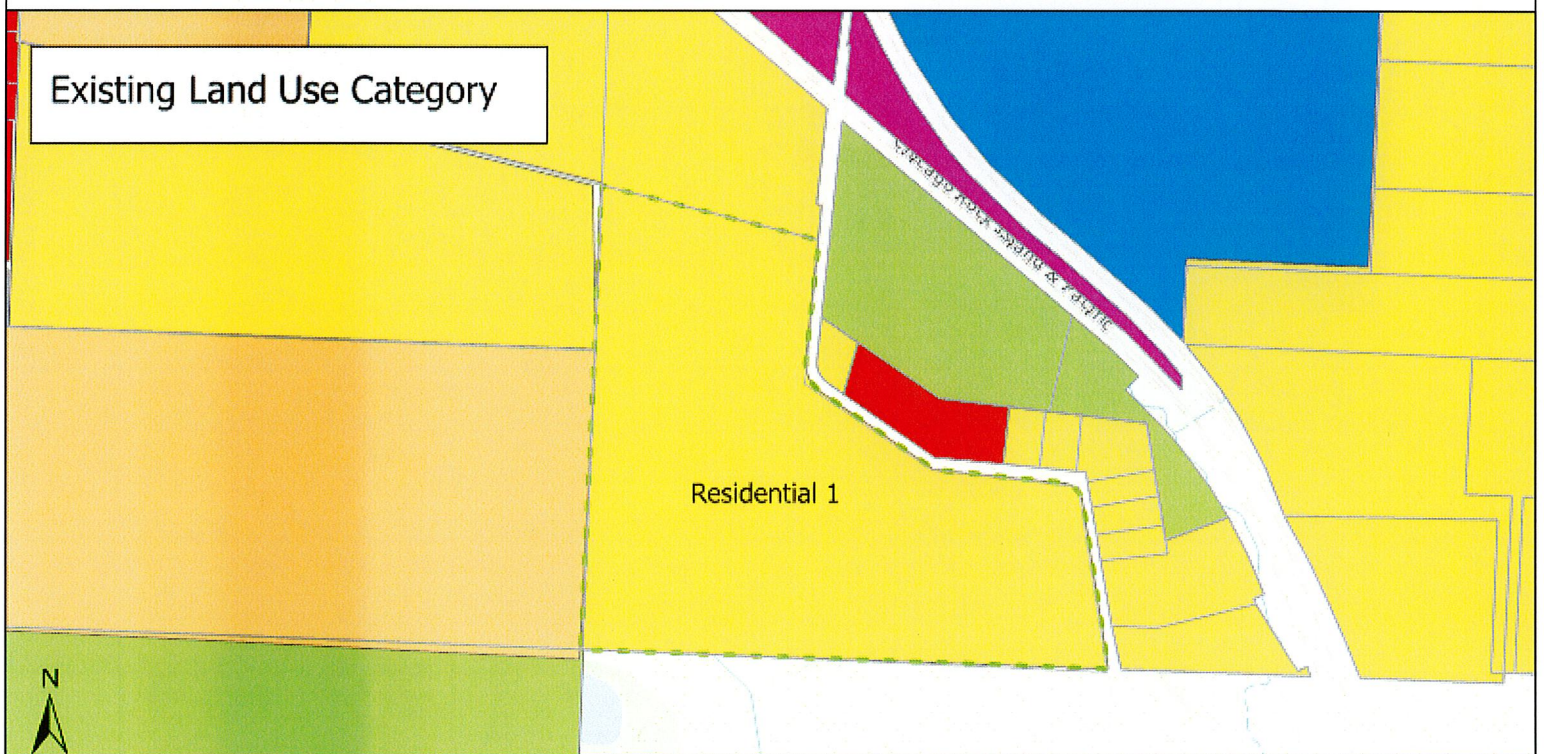
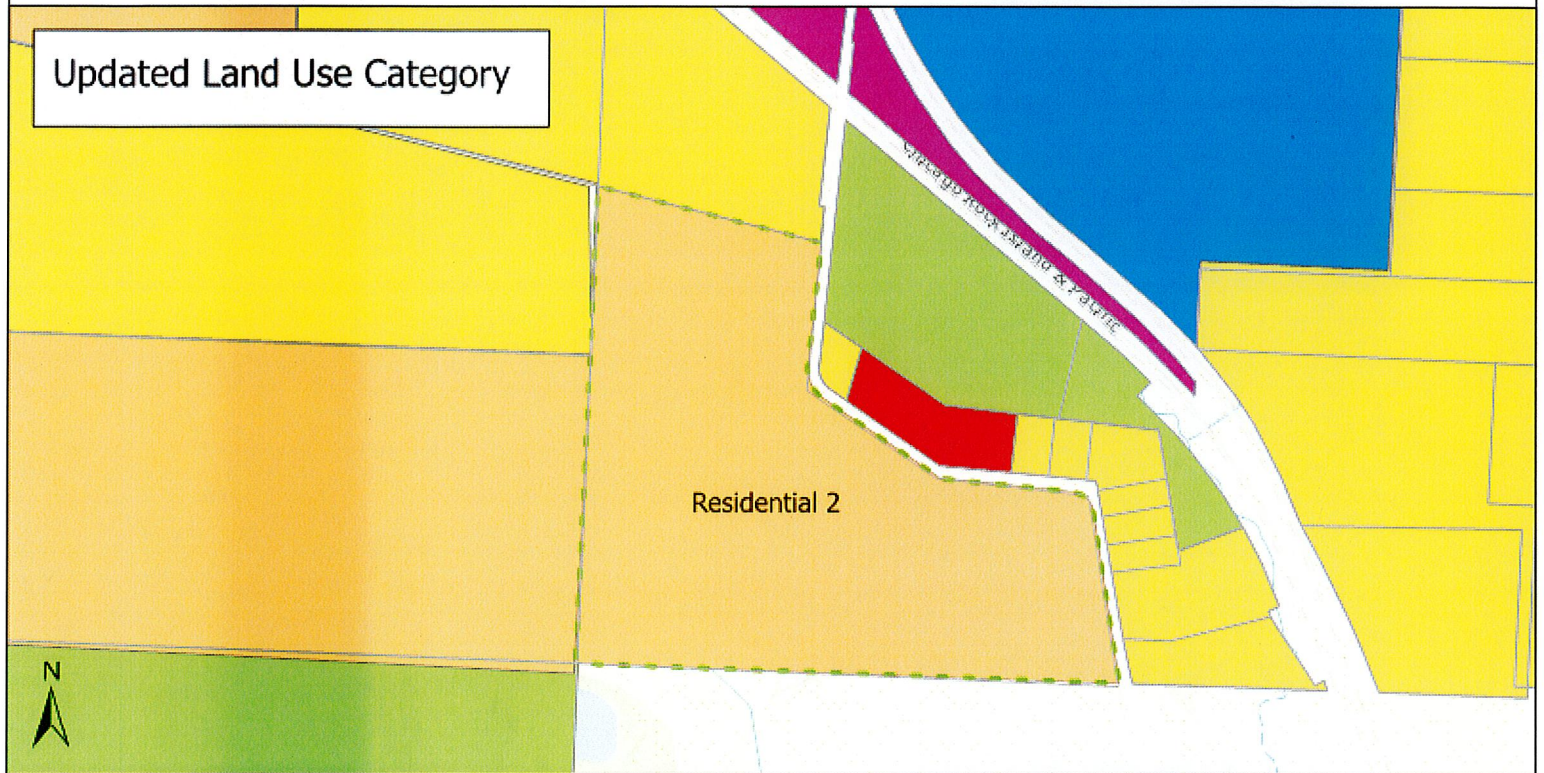
950 NE Pollard St.

- | | | | | |
|------------------------------|------------------------|----------------|------------------|--------------|
| Activity Center Downtown | Activity Center Summit | Industrial | Parks/Open Space | Water Bodies |
| Activity Center New Longview | Airport | Infrastructure | Residential 1 | |
| Activity Center North PRI | Civic | Mixed Use | Residential 2 | |
| Activity Center South PRI | Commercial | Office | Residential 3 | |

Appl. #PL2024-056 - COMPREHENSIVE PLAN AMENDMENT

Future Land Use Map Update

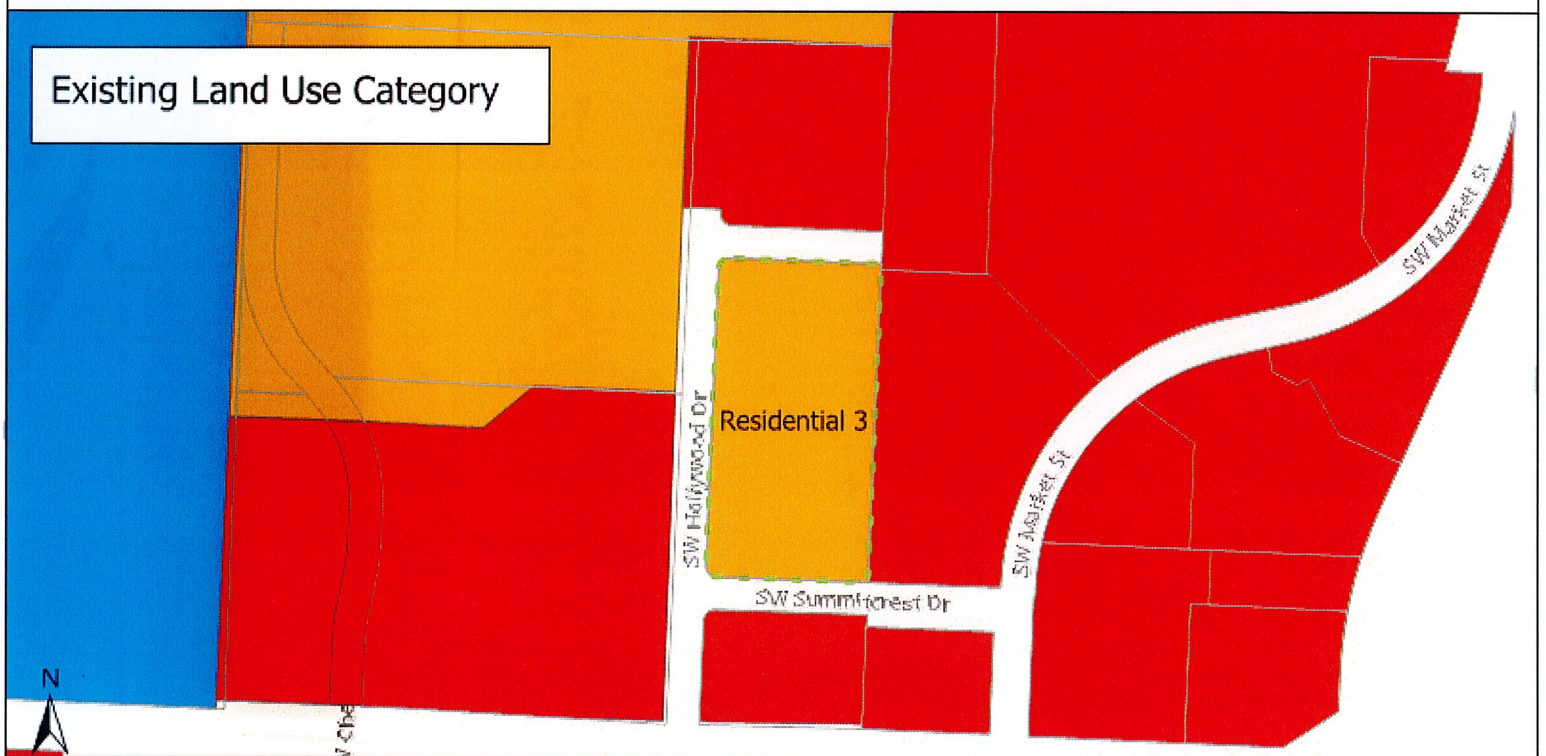
City of Lee's Summit, Applicant



Colton's Crossing



Appl. #PL2024-056 - COMPREHENSIVE PLAN AMENDMENT
 Future Land Use Map Update
 City of Lee's Summit, Applicant



Cowboy Carwash

- | | | | | |
|------------------------------|------------------------|----------------|------------------|--------------|
| Activity Center Downtown | Activity Center Summit | Industrial | Parks/Open Space | Water Bodies |
| Activity Center New Longview | Airport | Infrastructure | Residential 1 | |
| Activity Center North PRI | Civic | Mixed Use | Residential 2 | |
| Activity Center South PRI | Commercial | Office | Residential 3 | |