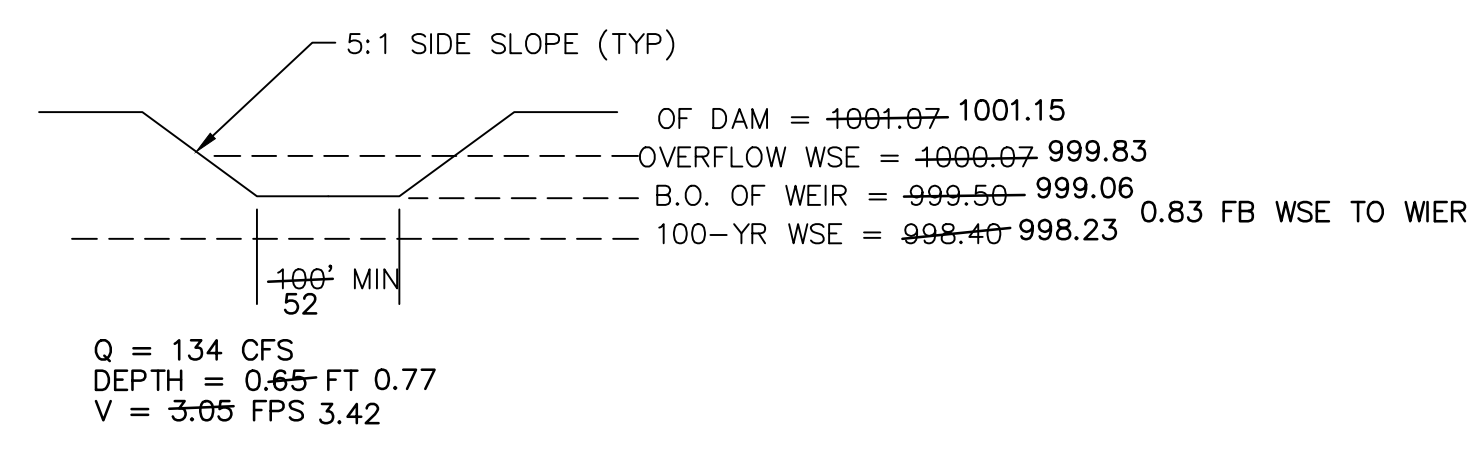
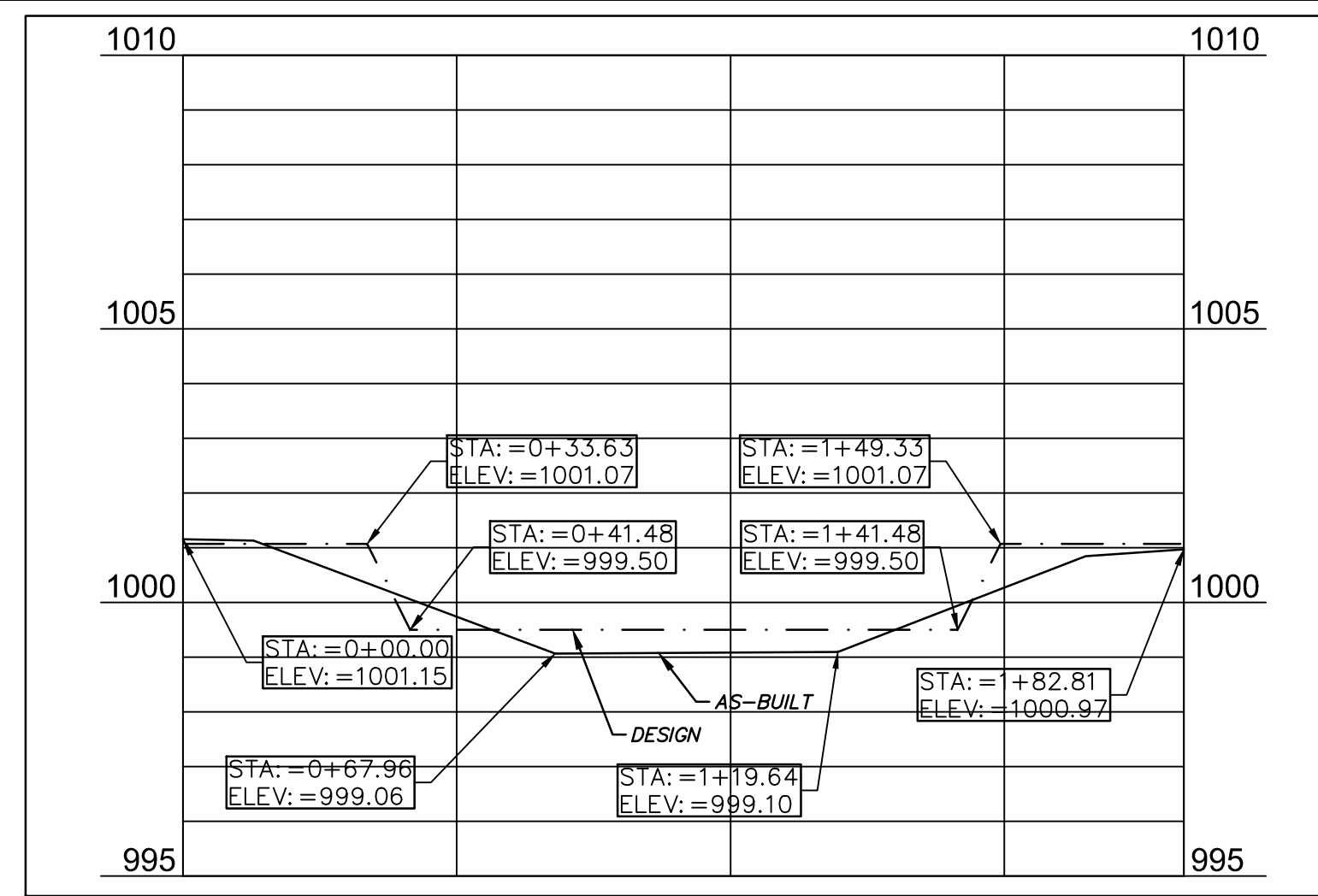


CONTRACTOR NOTE:

ALL TEMPORARY SILTATION BASINS, SEDIMENT BASINS AND DETENTION BASINS MUST BE CONSTRUCTED PRIOR TO ANY OTHER IMPROVEMENTS.



**EDD-3
EMERGENCY SPILLWAY DETAIL**



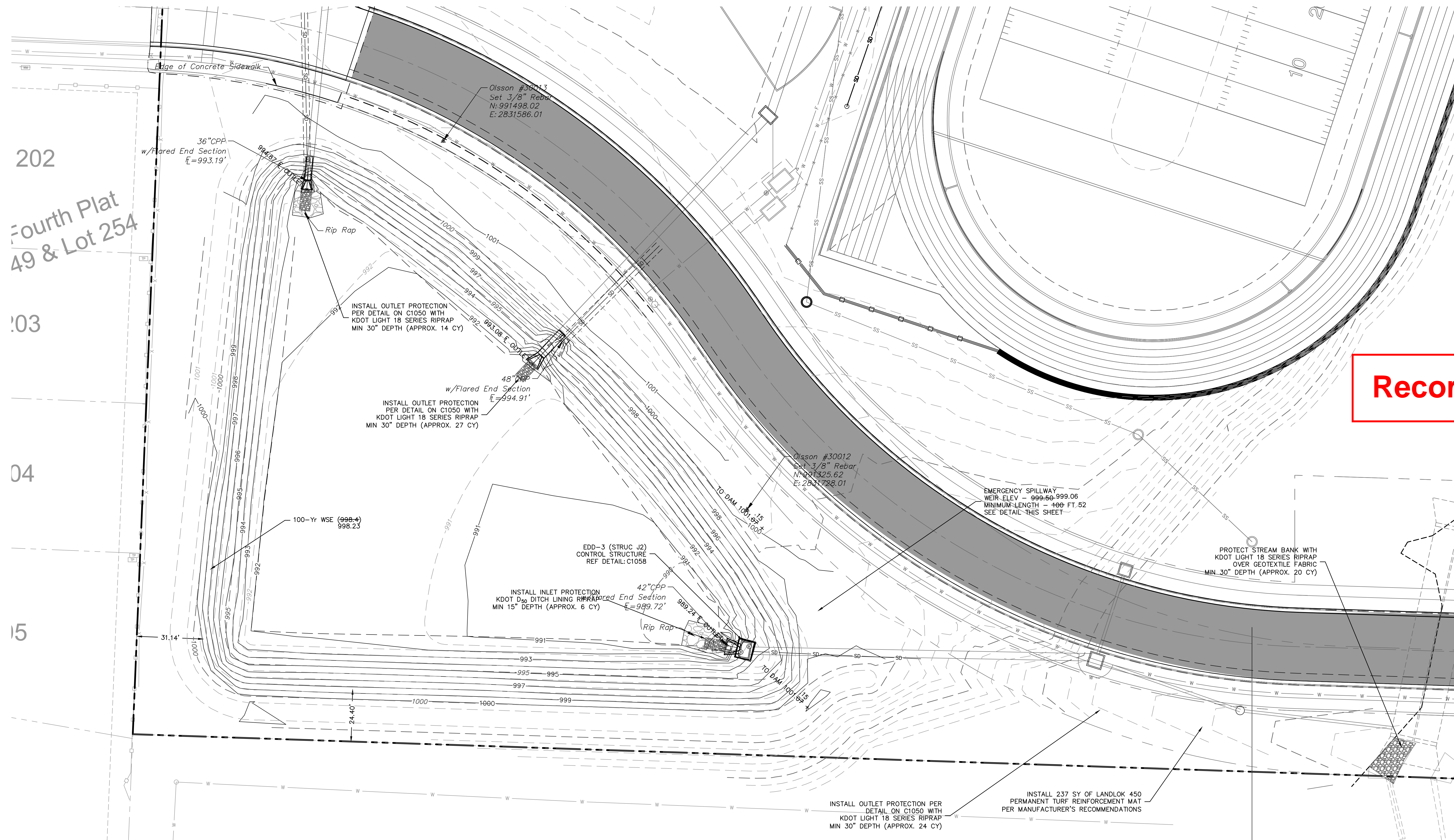
**EDD-3 EMERGENCY SPILLWAY DETAIL
(DESIGN VS AS-BUILT)**

DESIGN VS AS-BUILT DETENTION AREA				
ELEVATION	DESIGN AREA (ACRES)	DESIGN VOL (CF)	AS-BUILT AREA (ACRES)	AS-BUILT VOL (CF)
989.72	0.00	0	0.00	0
990	0.04	229	0.01	85
991	0.28	7015	0.27	6358
992	0.65	27906	0.63	26134
993	0.76	57632	0.76	56583
994	0.82	91870	0.84	91605
995	0.88	128722	0.91	129894
996	0.93	167969	0.98	171233
997	0.99	209612	1.04	215402
998	1.06	254087	1.10	262186
999	1.12	301393	1.14	311147
1000	1.23	352402	1.26	363594

LEGEND

---	PROPERTY LINE
---	DESIGN MAJOR CONTOUR
---	DESIGN MINOR CONTOUR
---	AS-BUILT MAJOR CONTOUR
---	AS-BUILT MINOR CONTOUR

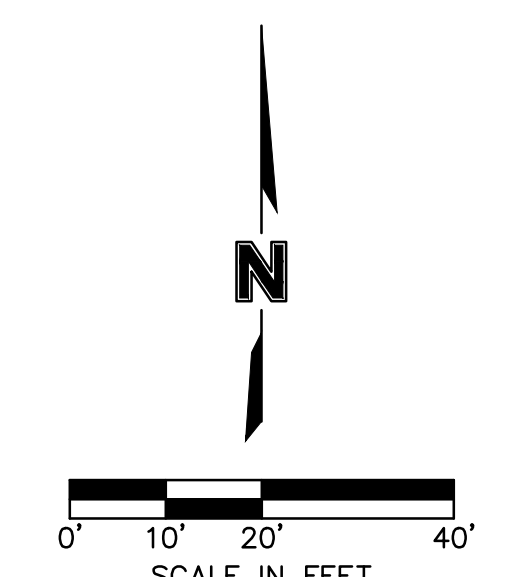
**DETENTION AS-BUILTS
11-07-2023**



Record Drawing

HEC-14 RIPRAP APRON SIZING FOR OUTFALL J-1

D50 (in)	Q (ft ³ /s)	D (ft)	TW (ft)	TW/D	APRON LENGTH (ft)	APRON DEPTH (ft)	Width at End of Apron (ft)
4.5	63	3.5	2.48	0.708571	4	3.3	19.9
Design	9				28	30	20



DWG: F:\2020\0001-0500\0200-0103\40-Design\AutoCAD\Final Plans\Sheets\CONSTRUCTION DOCUMENTS\C_GRD002_0200103.dwg
 DATE: Nov 09, 2023 10:38am XREFS: C:\BASE_0200103 C:\PTBLK_0200103 C:\PBASE_0200103 T_PBASE_0200103 T_PBASE_0200103
 USER: tparrsons T_PBASE_0200103 V_XALT_00103 C_PSURF_sabit_basin_0200103 AS_BUILT_Detention_Ponds

DLR Group
 © DLR Group
 60200 DLR Group, Inc. a Missouri corporation
 Missouri State Certificate of Authority #00939

olsson
 OLSSON, CIVIL ENGINEERING
 MISSOURI CERTIFICATE OF AUTHORITY #001592
 7301 West 133rd Street, Suite 200
 Overland Park, KS 66214-7750 TEL: 913.381.1170 www.olsson.com

STATE OF MISSOURI
 TERRY M. PATRICK
 PROFESSIONAL ENGINEER
 NUMBER PE-2018010505
 01/15/22

LEE'S SUMMIT MIDDLE SCHOOL #4
 LEE'S SUMMIT R-7 SCHOOL DISTRICT
 1001 SE BAILEY ROAD
 LEE'S SUMMIT, MO 64881

PACKAGE 2 -
 STRUCTURAL & SITE
 UTILITIES
 ISSUED FOR PERMIT
 08/28/20
 PRO02R 01.14.21

13-20102-00

DETENTION BASIN
 DETAIL

C1061