



**MAYER
DESIGN
GROUP**
P.C.
4400 South Lindbergh Blvd.
Suite 3
St. Louis, Missouri
63127-1603
Telephone: (314) 849-8777
Facsimile: (314) 849-4743

**Adams
Architectural
Associates**
P.O. BOX 230
CHESTERFIELD, MO
63306-0230
(636) 537-9333
(536) 537-1267 -FAX

Seal

Project Code

CCW-2201

Project Title

**New
Car Wash**
for
**COWBOY
EXPRESS
CARWASH**

210 MO-150
LEE SUMMIT, MISSOURI
64082

Drawing Title

**MECH. FLOOR
PLAN**

Date	Drawn	Checked
08-27-23	DB/mm	MM/MA

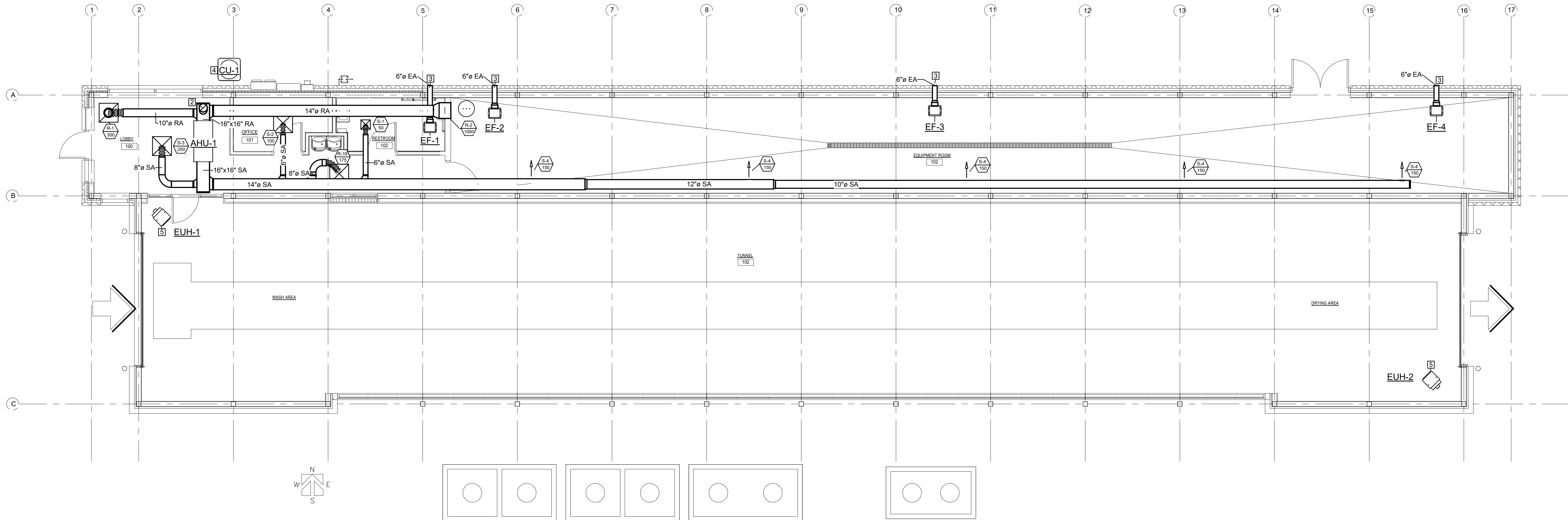
Drawing Number

M1.1**GENERAL NOTES:**

1. MOUNT T-STATS AT 4'-0" A.F.F. UNLESS OTHERWISE INDICATED. T-STAT IS SUPPLIED AND WIRED BY THE MECHANICAL CONTRACTOR.
2. FIELD VERIFY ARCHITECTURAL AND STRUCTURAL BUILDING CONDITIONS PRIOR TO DUCT AND EQUIPMENT FABRICATION. COORDINATE FOR CORRECT INSTALLATION.
3. PERFORM ALL WORK IN ACCORDANCE WITH CODES AND AUTHORITIES HAVING JURISDICTION. PROVIDE ALL PERMITS, INSPECTIONS, LICENSES AND FEES.
4. ALL DUCT SIZES SHOWN ON THE DRAWINGS ARE NET INSIDE CLEAR DIMENSIONS.
5. PROVIDE A LOCKING QUADRANT VOLUME DAMPER AT THE TAP OF EACH RUN-OUT TO DIFFUSERS & CRILLES, FOR BALANCING PURPOSES NO EXCEPTIONS!
6. ALL DUCTWORK CONSTRUCTION AND INSTALLATION SHALL CONFORM TO SMACNA AND ASHRAE RECOMMENDATIONS.
7. ALL SUPPLY AIR AND OUTSIDE AIR DUCTWORK SHALL BE EXTERNALLY INSULATED, UNLESS OTHERWISE INDICATED.
8. CONTRACTOR SHALL LIMIT THE AMOUNT OF FLEXIBLE DUCTWORK TO 6 FEET NO EXCEPTIONS!
9. ALL DUCT RUNOUTS TO DIFFUSERS SHALL BE THE SAME SIZE AS THE SCHEDULED NECK SIZE UNLESS OTHERWISE INDICATED.
10. COORDINATE ALL CEILING DIFFUSER/GRILLE LOCATIONS WITH LIGHTS, SPRINKLER HEADS AND OTHER CEILING DEVICES.
11. RECTANGULAR DUCTWORK IN LIEU OF ROUND IS ACCEPTABLE. CONVERSION FROM RECTANGULAR TO ROUND (OR VICE VERSA) SHALL CONFORM TO SMACNA GUIDELINES.
12. CONTRACTOR SHALL SEAL ALL ROOF PENETRATIONS AIR & WATER TIGHT.
13. IN ACCORDANCE WITH THE 2015 I. E.C.C, ALL SUPPLY DUCTWORK SHALL BE PROVIDED WITH DUCT WRAP OR DUCT LINER WITH A MINIMUM INSULATING VALUE OF R—8. ALL RETURN DUCTWORK SHALL BE PROVIDED WITH DUCT WRAP OR DUCT LINER WITH A MINIMUM INSULATING VALUE OF R—6.

KEYED NOTES:

1. SPLIT SYSTEM A/C UNIT SUSPENDED FROM STRUCTURE ABOVE UNIT WITH VIBRATION ISOLATING HANGERS. EXTEND REFRIGERANT PIPING FROM INDOOR UNIT TO OUTDOOR UNIT AS RECOMMENDED BY THE UNIT MANUFACTURER. SEE DETAIL FOR ADDITIONAL INSTALLATION INFORMATION AND SCHEDULE FOR CAPACITY. ROUTE 3/4" INSULATED CONDENSATE DRAIN LINE FROM UNIT TO HUB DRAIN ADJACENT TO UTILITY SINK. SEE PLUMBING DRAWINGS FOR HUB DRAIN LOCATION.
2. 10" DIAMETER OUTSIDE AIR DUCT FROM RETURN AIR DUCT PLENUM UP THRU ROOF AND TERMINATED WITH LOW— PROFILE ROOF CAP. ROOF CAP SHALL BE SIMILAR TO GREENHECK MODEL GRSF—10 OR EQUAL. COORDINATE WITH ROOFING CONTRACTOR TO ENSURE ROOF PENETRATION IS AIR/WATER TIGHT.
3. CEILING— MOUNTED, EXHAUST FAN SUSPENDED FROM STRUCTURE ABOVE FAN WITH VIBRATION ISOLATING HANGERS. EXTEND EXHAUST DUCT OUT THRU EXTERIOR WALL AS SHOWN AND TERMINATE WITH GREENHECK MODEL WC—10x3 OR EQUAL HOODED WALL CAP.
4. AIR— COOLED CONDENSING UNIT MOUNTED 4" CONCRETE HOUSEKEEP INT PAD. INSTALL UNIT, INCLUDING OPERATING CLEARANCES, AS RECOMMENDED BY UNIT MANUFACTURER. SEE DETAIL FOR ADDITIONAL INFORMATION AND SCHEDULE FOR CAPACITY.
5. ELECTRIC UNIT HEATER INSTALLED AT 9'-0" AFF TO HEATER BOTTOM. PROVIDE WALL-MOUNTED THERMOSTAT SET TO ENERGIZE HEATER AT 45 DEG. F. SEE DETAIL FOR ADDITIONAL INFORMATION AND SCHEDULE FOR CAPACITY.



1 M1.1 - HVAC FLOOR PLAN
3/16" = 1'-0"

SPLIT SYSTEM UNIT SCHEDULE													
PLAN MARK	MANUF.	MODEL	SERVING	CLG MBH	HEATER KW	CFM	AMB TEMP °F	REF	ELECTRICAL			WEIGHT LBS	REMARKS
									VOLTS/PH	MCA	MOCP		
AHU-1	TRANE	TEM4A0C48S41SB	OFFICE	33.2	14.4	1575	95	R-410A	208/1	94	100	30	1, 2
CU-1	TRANE	4TTA4048A3000A	OFFICE	33.2	-	-	95	R-410A	208/3	18	30	85	1, 3, 4, 5

1. FURNISHED BY MECHANICAL CONTRACTOR.
2. FURNISHED WITH MANUFACTURER'S INTEGRAL PULL DISCONNECT.
3. DISCONNECT SWITCH BY ELECTRICAL CONTRACTOR.
4. FURNISHED WITH 7-DAY PROGRAMMABLE THERMOSTAT
5. PROVIDE UNIT WITH CRANKCASE HEATER, FILTER DRYER, SIGHT GLASS, AND SERVICE VALVES.

ELECTRIC UNIT HEATER SCHEDULE								
PLAN MARK	MANUF.	MODEL	TYPE	LOCATION	HEATER			REMARKS
					KW	STAGES	VOLT/PH	
EUH-1	MODINE	HER150B 3101	HORIZONTAL	WASH AREA	15	1	480/3	1, 2, 3, 4
EUH-2	MODINE	HER150B 3101	HORIZONTAL	DRYING AREA	15	1	480/3	1, 2, 3, 4

1. PROVIDED BY MECHANICAL SUB CONTRACTOR.
2. FURNISHED WITH DISCONNECT SWITCH.
3. FURNISHED WITH REMOTELY MOUNTED THERMOSTAT SET TO 45F.
4. MOUNT 10'-0" FROM FLOOR TO BOTTOM OF UNIT.

AIR DEVICE SCHEDULE										
PLAN MARK	MANUF.	MODEL	MODULE	NECK	MAX NC	PATTERN	MATERIAL	FINISH	MOUNT	REMARKS
S-1	TITUS	TMS	12"x12"	6" Ø	30	4-WAY	STEEL	WHITE	CEILING	1
S-2	TITUS	TMS	24"x24"	6" Ø	30	4-WAY	STEEL	WHITE	CEILING	1
S-3	TITUS	TMS	24"x24"	8" Ø	30	4-WAY	STEEL	WHITE	CEILING	1
S-4	TITUS	301RL	12"X6"	-	30	-	ALUMINUM	WHITE	DUCT	1
R-1	TITUS	PAR	24"x24"	12" Ø	30	PERF	STEEL	WHITE	LAY-IN	1
R-2	TITUS	301RL	20"X20"	-	30	-	ALUMINUM	WHITE	SIDEWALL	1, 2


1. PROVIDED BY MECHANICAL SUBCONTRACTOR.
2. DO NOT SUPPLY WITH OPPOSED BLADE DAMPER.

FAN SCHEDULE										
PLAN MARK	MANUF.	MODEL	SERVICE	CFM	TSP IWC	MOTOR		LBS	MOUNT	REMARKS
						HP	VOLT/PH			
EF-1	GREENHECK	SP-A125	RESTROOM 102	75	0.25	FR	115/1	30	CEILING MOUNTED	1, 2, 3
EF-2	GREENHECK	SP-A125	EQUIPMENT ROOM 103	75	0.25	FR	115/1	30	CEILING MOUNTED	1, 2
EF-3	GREENHECK	SP-A125	EQUIPMENT ROOM 103	75	0.25	FR	115/1	30	CEILING MOUNTED	1, 2
EF-4	GREENHECK	SP-A125	EQUIPMENT ROOM 103	75	0.25	FR	115/1	30	CEILING MOUNTED	1, 2

1. PROVIDED BY MECHANICAL SUBCONTRACTOR.
2. FURNISHED WITH DISCONNECT, GRAVITY DAMPER, AND WALL TERMINATION KIT.
3. EC TO TIE INTO LIGHT SWITCH.


VENTILATION SCHEDULE							
ROOM NUMBER	ROOM NAME	AREA SF	MAXIMUM OCCUPANTS	REQUIRED OA (CFM/PERS)	REQUIRED OA (CFM/SF)	REQUIRED EA (CFM)	FINAL OA REQUIRED
100	LOBBY	235	3	5	0.06	-	225
101	OFFICE	55	1	5	0.06	-	
102	RESTROOM	60	-	-	-	75	
103	EQUIPMENT	725	-	-	0.15	150	

Revisions



KREWSON

LAB ASSOCIATES




MAYER
DESIGN
GROUP

P.C.

4400 South Lindbergh Blvd.
Suite 3
St. Louis, Missouri
63127-1603

Telephone: (314) 849-8777
Facsimile: (314) 849-4743



Adams
Architectural
Associates

P.O. BOX 230
CHESTERFIELD, MO
63306-0230

(636)537-9333
(536)537-1267 -FAX

Seal

Project Code
CCW-2201

Project Title
New
Car Wash
for
COWBOY
EXPRESS
CARWASH

210 MO-150
LEE SUMMIT, MISSOURI
64082

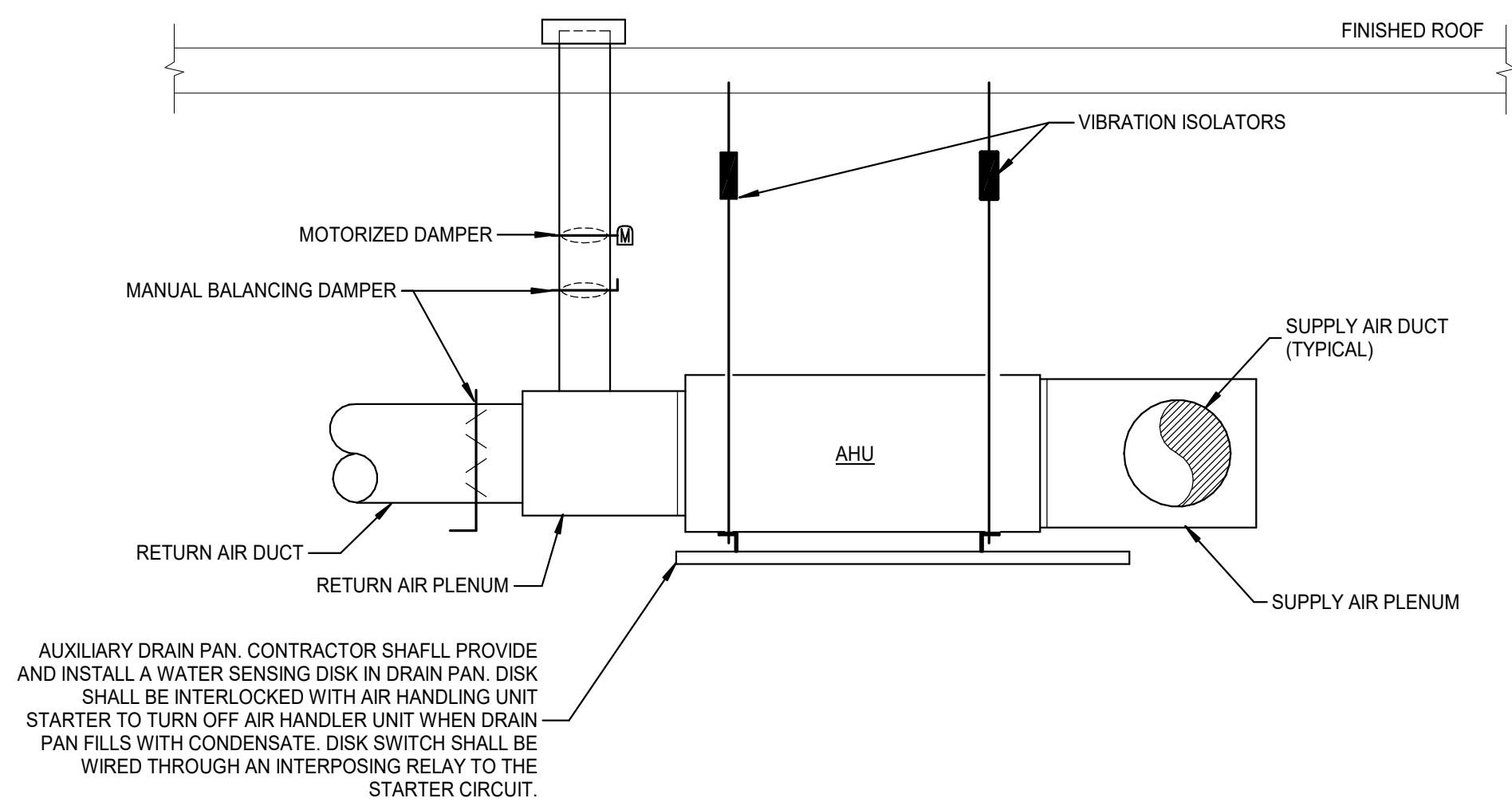
Drawing Title
SCHEDULES

Date
08-27-23

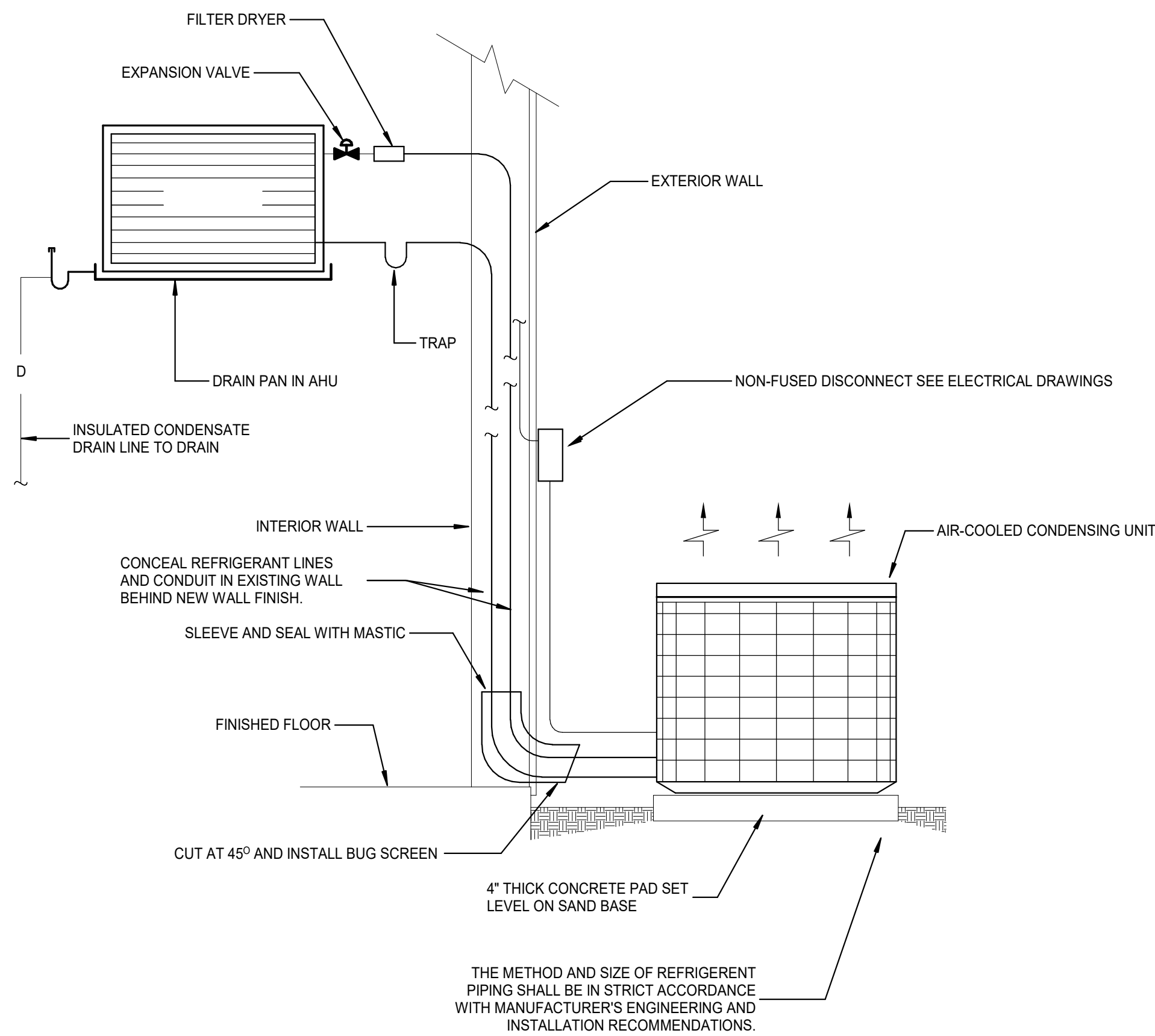
Drawn
DB/mm

Checked
MM/MA

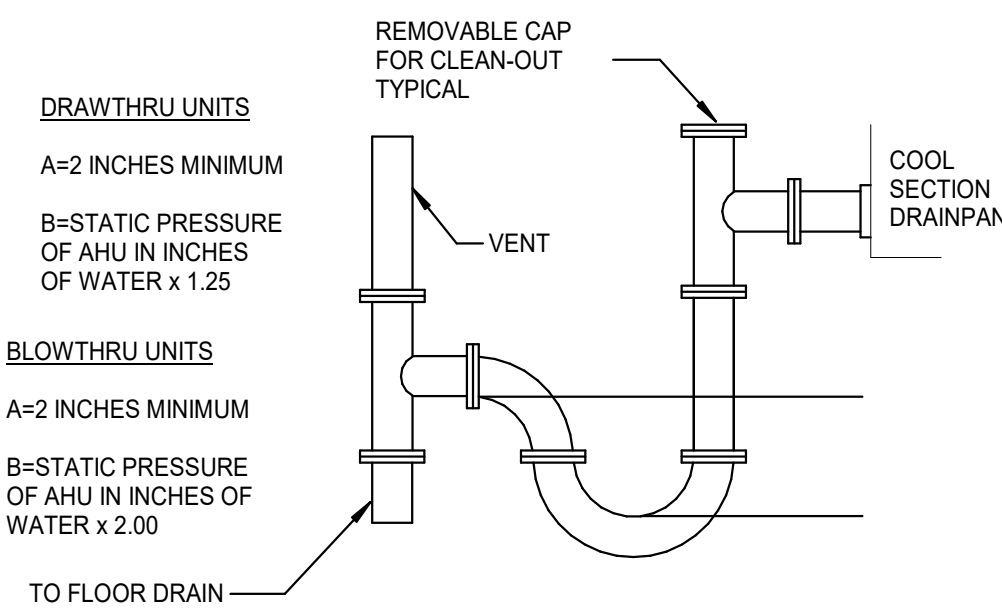
Drawing Number
M2.1



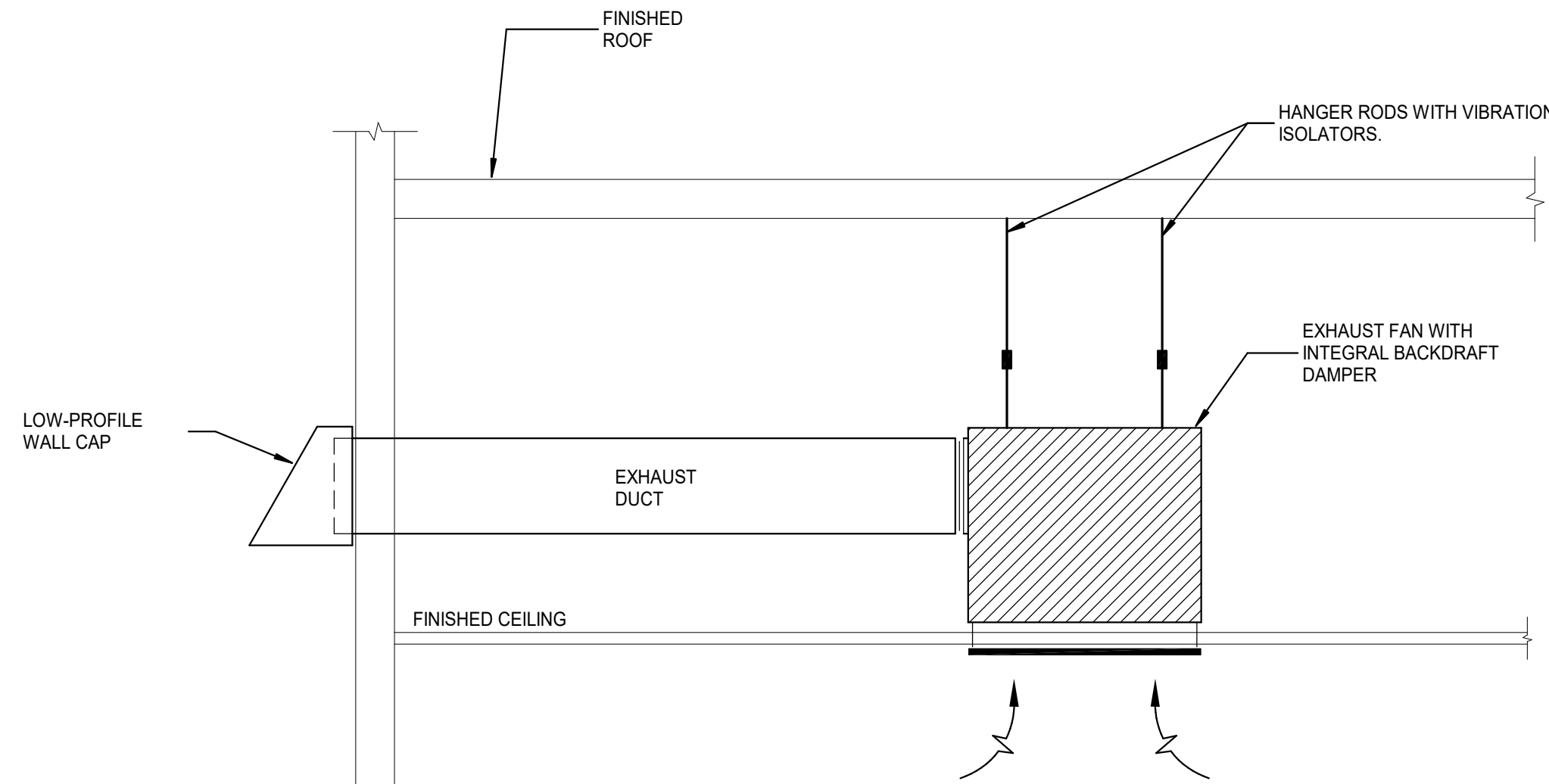
HORIZONTAL AHU SUSPENDED ABOVE CEILING



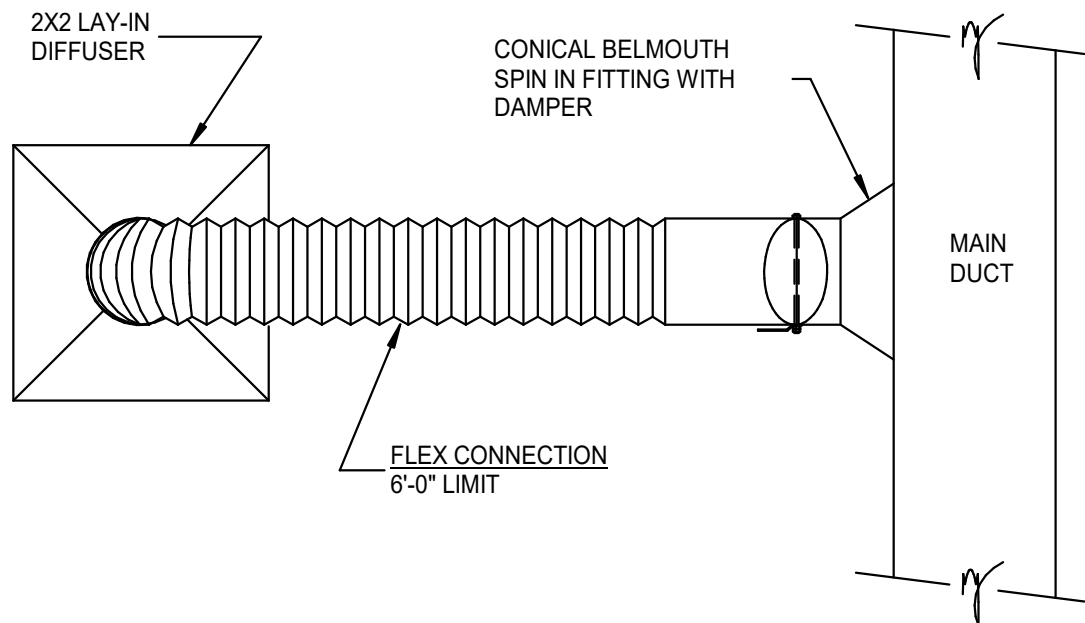
SPLIT SYSTEM AHU DETAILS



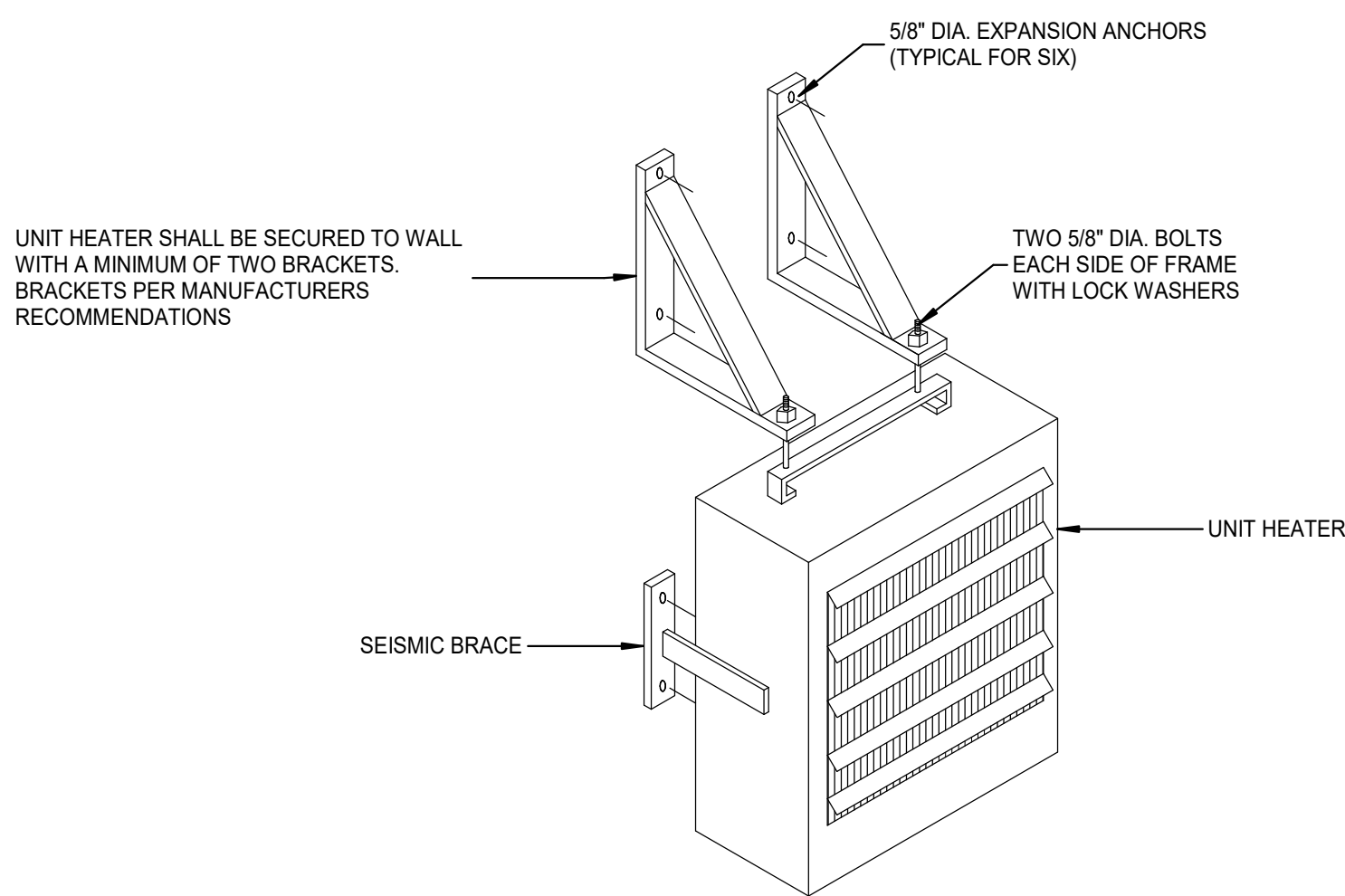
COOLING TRAP DETAIL



CEILING-MOUNTED EXHAUST FAN DETAIL



ROUND DUCT TAKE-OFF



ELECTRICAL UNIT HEATER DETAIL

Revisions



MAYER DESIGN GROUP
P.C.
4400 South Lindbergh Blvd.
Suite 3
St. Louis, Missouri
63127-1603
Telephone: (314) 849-8777
Facsimile: (314) 849-4743

Adams Architectural Associates
P.O. BOX 230
CHESTERFIELD, MO
63506-0230
(636)537-9333
(536)537-1267 -FAX

Seal

Project Code
CCW-2201

Project Title
New Car Wash
for
COWBOY EXPRESS CARWASH
210 MO-150
LEE SUMMIT, MISSOURI
64082

Drawing Title
HVAC DETAILS

Date Drawn Checked
08-27-23 DB/mm MM/MA

Drawing Number
M3.1

GENERAL NOTES

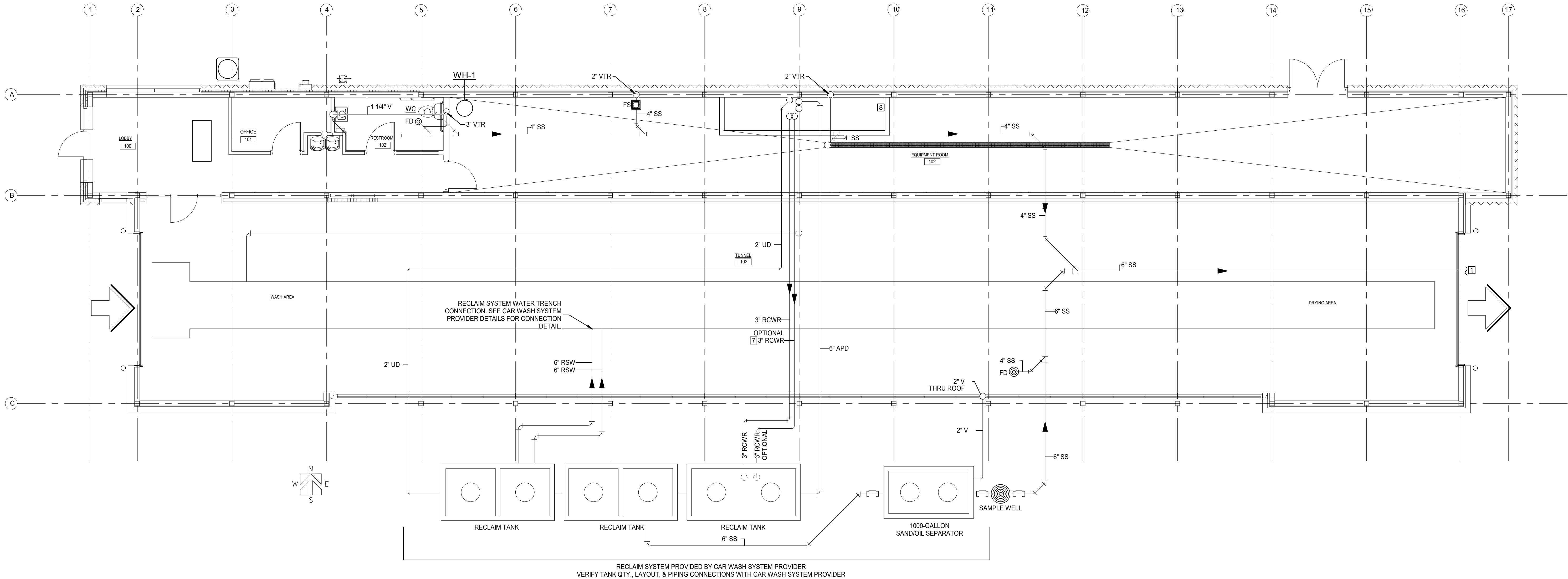
- 1. INSTALL ALL PLUMBING IN ACCORDANCE WITH CITY ORDINANCE AND PAY FOR FEES REQUIRED.
- 2. WATER PIPING:
BELOW SLAB/GRADE: TYPE K SOFT DRAWN COPPER
ABOVE SLAB/GRADE: TYPE L HARD DRAWN COPPER
INSULATE ALL PIPING SUBJECT TO FREEZING AND SUBJECT TO FORMING CONDENSATION TO A MINIMUM VALUE R-3.
- 3. SANITARY SEWER AND VENT PIPING - PVC SCHEDULE 40.
- 4. PROVIDE A VACUUM BREAKER AT ALL HOSE BIBBS.
- 5. PROVIDE TRAP PRIMERS ON FLOOR DRAINS AND FLOOR SINKS.
- 6. PROVIDE ADA PIPING COVERS ON WATER SUPPLY AND DRAIN PIPING UNDER EXPOSED LAVATORIES.
- 7. ALL VENTS THRU ROOF TO BE A MINIMUM OF 24" FROM THE EDGE OF THE BUILDING.
- 8. CONTRACTOR SHALL COORDINATE ALL PLUMBING VENTS THRU ROOF TO ENSURE THAT PLUMBING VENTS TERMINATE AT LEAST 10'-0" FROM ALL A/C UNIT OUTSIDE AIR INTAKES.
- 9. CONTRACTOR SHALL FIELD VERIFY ALL EXISTING CONDITIONS PRIOR TO STARTING WORK.
- 10. CONTRACTOR SHALL ENSURE THAT THE HOT WATER TEMPERATURE DELIVERED LAVATORY AND UTILITY SINK IS NO GREATER THAN 110 DEG F BY PROVIDING ASSE 1070 LISTED TEMPERATURE LIMITING DEVICES AT EACH PLUMBING FIXTURE RECEIVING HOT WATER.
- 11. REFER TO CAR WASH EQUIPMENT PROVIDER'S DRAWINGS FOR DETAILED FRESH WATER, RECLAIM WATER AND SANITARY SEWER PIPING CONNECTIONS TO CAR WASH AND OTHER EQUIPMENT.
- 12. SEE CAR WASH EQUIPMENT PROVIDER DETAILS FOR PIPE SCHEDULES.

KEYED NOTES

- 1. REFER TO SITE UTILITIES PLAN FOR CONTINUATION OF DOMESTIC COLD WATER & SANITARY SEWER CONNECTIONS. FIELD VEIFY EXACT LOCATION AND ALL EXISTING CONDITIONS PRIOR TO STARTING ANY WORK.
- 2. PROVIDE BUILDING SHUT-OFF VALVE (TEE HEAD VALVE), BELOW GRADE IN VALVE BOX.
- 3. RPZ-TYPE BACKFLOW PREVENTER MOUNTED ON WALL AT 48" AFF. BACKFLOW PREVENTER SHALL BE EQUAL TO WATTS REGULATOR SERIES LF809 WITH AIR GAP PIPED TO ADJACENT FLOOR DRAIN.
- 4. APPROXIMATE LOCATION OF 1 1/2" DOMESTIC COLD WATER LINE DOWN TO SERVICE CAR WASH EQUIPMENT. FIELD VERIFY EXACT LOCATION ON-SITE WITH CAR WASH SYSTEM PROVIDER. PROVIDE RPZ BACKFLOW PREVENTER PRIOR TO CONNECTION TO EQUIPMENT.
- 5. SEE MANUFACTURERS INSTALLATION DOCUMENTATION FOR RECLAIM WATER SYSTEM TANK CONNECTION DETAILS. VERIFY UNDERGROUND PIPING ROUTING, DEPTH, AND CONNECTIONS PRIOR TO INSTALLATION.
- 6. ELECTRIC WATER HEATER WH ON PLATFORM. SEE DETAIL FOR ADDITIONAL INFORMATION AND SCHEDULE FOR CAPACITY.
- 7. A SECOND 3" RECLAIM WATER SYSTEM SUCTION LINE IS OPTIONAL. CONFIRM WITH EQUIPMENT SUPPLIER IF THE OPTIONAL RECLAIM WATER SYSTEM SUCTION LINE IS REQUIRED.
- 8. SECONDARY CONTAINMENT AROUND RECLAIM WATER SYSTEM EQUIPMENT. INSTALL RPZ MIN. 6" ABOVE THE FLOOD RIM OF THE CONTAINMENT. ROUTE RPZ DRAIN OUTSIDE CONTAINMENT TO NEAR DRAIN.

LEGEND

APD	AQUAPREP DISCHARGE PIPING
FD	FLOOR DRAIN
FS	FLOOR SINK
RSW	RECLAIM SYSTEM WATER PIPING
RCWR	RECLAIM WATER RETURN PIPING
SS	SANITARY SEWER
UD	UNDERFLOW DISCHARGE
VTR	VENT THRU ROOF
WC	WATER CLOSET
WH	WATER HEATER



RECLAIM SYSTEM PROVIDED BY CAR WASH SYSTEM PROVIDER
VERIFY TANK QTY., LAYOUT, & PIPING CONNECTIONS WITH CAR WASH SYSTEM PROVIDER

1 P1.1 - SANITARY PLUMBING FLOOR PLAN
3/16" = 1'-0"

Revisions



MAYER DESIGN GROUP
P.C.
4400 South Lindbergh Blvd.
Suite 3
St. Louis, Missouri
63127-1603
Telephone: (314) 849-8777
Facsimile: (314) 849-4743

Adams Architectural Associates
P.O. BOX 230
CHESTERFIELD, MO
63506-0230
(636) 537-9333
(536) 537-1267 -FAX

Seal

Project Code
CCW-2201

Project Title
New Car Wash
for
COWBOY EXPRESS CARWASH

210 MO-150
LEE SUMMIT, MISSOURI
64082

Drawing Title
SANITARY PLUMBING FLOOR PLAN

Date Drawn Checked
08-27-23 DB/mm MM/MA

Drawing Number
P1.1

GENERAL NOTES

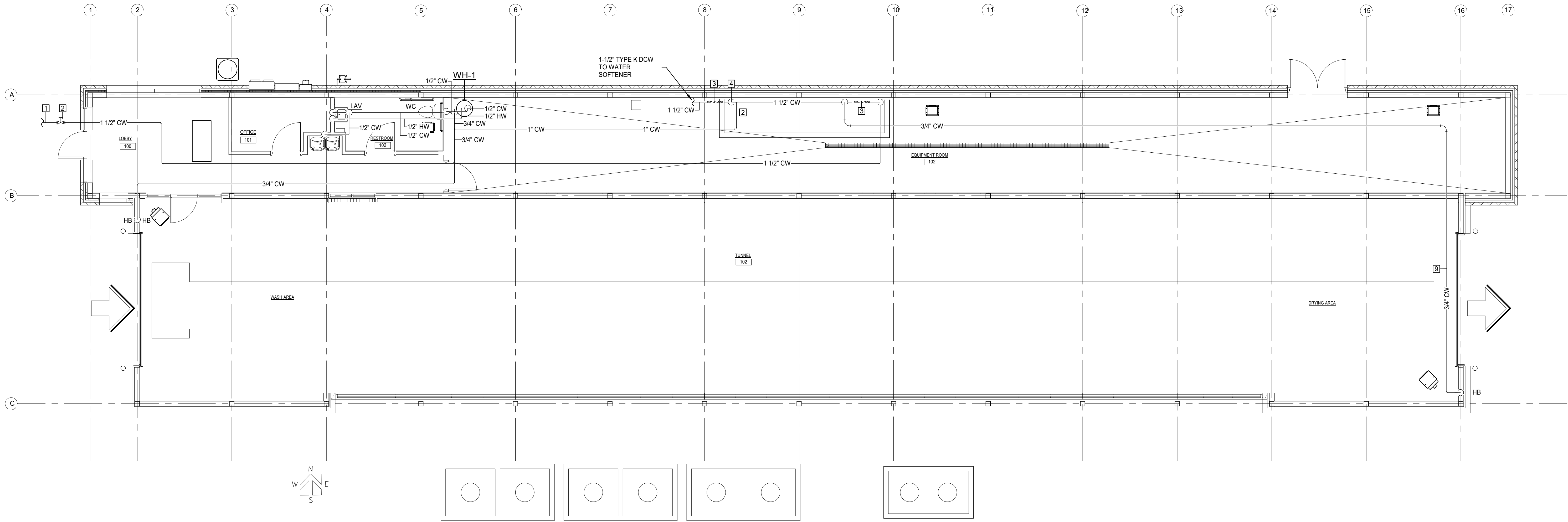
1. INSTALL ALL PLUMBING IN ACCORDANCE WITH CITY ORDINANCE AND PAY FOR FEES REQUIRED.
2. WATER PIPING:
BELOW SLAB/GRADE: TYPE K SOFT DRAWN COPPER
ABOVE SLAB/GRADE: TYPE L HARD DRAWN COPPER
INSULATE ALL PIPING SUBJECT TO FREEZING AND SUBJECT TO FORMING CONDENSATION TO A MINIMUM VALUE R-3.
3. SANITARY SEWER AND VENT PIPING - PVC SCHEDULE 40.
4. PROVIDE A VACUUM BREAKER AT ALL HOSE BIBBS.
5. PROVIDE TRAP PRIMERS ON FLOOR DRAINS AND FLOOR SINKS.
6. PROVIDE ADA PIPING COVERS ON WATER SUPPLY AND DRAIN PIPING UNDER EXPOSED LAVATORIES.
7. ALL VENTS THRU ROOF TO BE A MINIMUM OF 24" FROM THE EDGE OF THE BUILDING.
8. CONTRACTOR SHALL COORDINATE ALL PLUMBING VENTS THRU ROOF TO ENSURE THAT PLUMBING VENTS TERMINATE AT LEAST OF 10'-0" FROM ALL A/C UNIT OUTSIDE OF AIR INTAKES.
9. CONTRACTOR SHALL FIELD VERIFY ALL EXISTING CONDITIONS PRIOR TO STARTING WORK.
10. CONTRACTOR SHALL ENSURE THAT THE HOT WATER TEMPERATURE DELIVERED LAVATORY AND UTILITY SINK IS NO GREATER THAN 110DEG.F BY PROVIDING ASSE 1070 LISTED TEMPERATURE LIMITING DEVICES AT EACH PLUMBING FIXTURE RECEIVING HOT WATER.
11. REFER TO CAR WASH EQUIPMENT PROVIDER'S DRAWINGS FOR DETAILED FRESH WATER, RECLAIM WATER AND SANITARY SEWER PIPING CONNECTIONS TO CAR WASH AND OTHER EQUIPMENT.

KEYED NOTES

1. REFER TO SITE UTILITIES PLAN FOR CONTINUATION OF DOMESTIC COLD WATER & SANITARY SEWER CONNECTIONS. FIELD VEIFY EXACT LOCATION AND ALL EXISTING CONDITIONS PRIOR TO STARTING ANY WORK.
2. PROVIDE BUILDING SHUT-OFF VALVE (TEE HEAD VALVE), BELOW GRADE IN VALVE BOX.
3. RPZ-TYPE BACKFLOW PREVENTER MOUNTED ON WALL AT 48" AFF. BACKFLOW PREVENTER SHALL BE EQUAL TO WATTS REGULATOR SERIES LF809 WITH AIR GAP PIPED TO ADJACENT FLOOR DRAIN.
4. APPROXIMATE LOCATION OF 1 1/2" DOMESTIC COLD WATER LINE DOWN TO SERVICE CAR WASH EQUIPMENT. FIELD VERIFY EXACT LOCATION ON-SITE WITH CAR WASH SYSTEM PROVIDER. PROVIDE RPZ BACKFLOW PREVENTER PRIOR TO CONNECTION TO EQUIPMENT.
5. SEE MANUFACTURERS INSTALLATION DOCUMENTATION FOR RECLAIM WATER SYSTEM TANK CONNECTION DETAILS. VERIFY UNDERGROUND PIPING ROUTING, DEPTH, AND CONNECTIONS PRIOR TO INSTALLATION.
6. ELECTRIC WATER HEATER WH ON PLATFORM. SEE DETAIL FOR ADDITIONAL INFORMATION AND SCHEDULE FOR CAPACITY.
7. A SECOND 3" RECLAIM WATER SYSTEM SUCTION LINE IS OPTIONAL. CONFIRM WITH EQUIPMENT SUPPLIER IF THE OPTIONAL RECLAIM WATER SYSTEM SUCTION LINE IS REQUIRED.
8. SECONDARY CONTAINMENT AROUND RECLAIM WATER SYSTEM EQUIPMENT. INSTALL RPZ MIN. 6" ABOVE THE FLOOD RIM OF THE CONTAINMENT. ROUTE RPZ DRAIN OUTSIDE CONTAINMENT TO NEAR DRAIN.
9. ELECTRIC HEAT TRACE WATER LINE TO PREVENT FREEZING.

LEGEND

CW	COLD WATER
HW	HOT WATER
HB	HOSE BIB
WH	WATER HEATER



1 P1.2 - DOMESTIC WATER PLUMBING FLOOR PLAN
3/16" = 1'-0"

Revisions



MAYER DESIGN GROUP
P.C.
4400 South Lindbergh Blvd.
Suite 3
St. Louis, Missouri
63127-1603
Telephone: (314) 849-8777
Facsimile: (314) 849-4743

Adams Architectural Associates
P.O. BOX 230
CHESTERFIELD, MO
63506-0230
(636)537-9333
(536)537-1267 -FAX

Seal

Project Code

CCW-2201

Project Title

New Car Wash
for
COWBOY EXPRESS CARWASH

210 MO-150
LEE SUMMIT, MISSOURI
64082

Drawing Title

DOMESTIC WATER PLUMBING FLOOR PLAN

Date Drawn Checked

08-27-23 DB/mm MM/MA

Drawing Number

P1.2


PLUMBING FIXTURE SCHEDULE					
PLAN MARK	ROUGH-IN SIZES				DESCRIPTION
	CW	HW	W	V	
WC	1/2"	-	4"	3"	TANK-TYPE WATER CLOSET, FLOOR-MOUNTED, WHITE VITREOUS CHINA, BOTTOM OUTLET, 1.6 GPF, WHITE OPEN-FRONT SEAT. KOHLER MODEL K-3493-RA, 17-1/8" HIGH WITH K-4650 SEAT AND MANUAL LEVER PROVIDED WITH FIXTURE OR EQUAL.
LAV	1/2"	1/2"	2"	1-1/4"	LAVATORY, WALL-MOUNTED, 20"x18" WALL-MOUNTED/CONCEALED ARM CARRIER ARM, P-TRAP AND WALL ESCUTCHEON, ENAMELED CAST IRON, SINGLE HOLE WITH SENSOR FAUCET ADA/TAS COMPLIANT INSTALLATION. LAVATORY: KOHLER MODEL K-2084-O OR APPROVED EQUAL. SENSOR FAUCET: ZURN MODEL Z6913-F-CWB-MJ-TMV OR APPROVED EQUAL.
USK	1/2"	1/2"	3"	1-1/2"	WORK SINK, FLOOR- & WALL-MOUNTED, STAINLESS STEEL WITH FOOT-OPERATED FAUCET. SINGLE FAUCET HOLE. CAST IRON COMBINATION P-TRAP/ADJUSTABLE FLOOR SUPPORT. CONSULT ARCHITECT FOR MOUNTING HEIGHTS AND PLACEMENT. ELKAY ESS-2520C WITH LK-395 FAUCET AND LK-399 FLOOR-MOUNTED DOUBLE PEDAL VALVE OR APPROVED EQUAL.
HB	3/4"	-	-	-	HOSE HYDRANT, FREEZE-PROOF, WITH CONTROL KEY AND INTEGRAL VACUUM BREAKER & UNION ELBOW. JOSAMN 71050 OR APPROVED EQUAL.
FD	1/2"	-	3"	1-1/2"	FLOOR DRAIN WITH DEEP SEAL P-TRAP AND 1/2" PRIMER TAP. JOSAM 30003-5A-50 FLOOR DRAIN AND STRAINER OR EQUAL.
FS	1/2"	-	3"	1-1/2"	PVC FLOOR SINK, 9" SQUARE BODY, 6" DEEP WITH DOME BOTTOM STRAINER, 1/2" GRATE AND 3" HUB OUTLET WITH 1/2" TRAP PRIMER TAP.
TP-1	1/2"	-	-	-	TRAP SEAL PRIMER VALVE. JOSAM 88250 OR EQUAL.
KSK	1/2"	1/2"	2"	1-1/2"	KITCHEN SINK, DOUBLE COMPARTMENT, 18 GA. STAINLESS STEEL, SINGLE CONTROL FAUCET WITH HAND SPRAY AND 1/2 HP ELECTRIC DISPOSAL, 10" DEEP. FINAL FIXTURE SELECTION BY OWNER/CONTRACTOR

1. PROVIDED BY MECHANICAL SUBCONTRACTOR.
2. DO NOT SUPPLY WITH OPPOSED BLADE DAMPER.

WATER HEATER SCHEDULE	
DESCRIPTION	WH
LOCATION	EQUIPMENT ROOM
STORAGE (GAL.)	30
ENT. WATER TEMP (°F)	65
LVG. WATER TEMP (°F)	132
HEATER AMPS AT RATED VOLTAGE	21.64
NO. OF ELEMENTS	2
VOLTS/PH	208/1
RECOVERY @ 72°F RISE, GPH	25
MANUFACTURER	AO SMITH
MODEL NO.	DEN-30
REMARKS	1


1. SET THE LEAVING WATER TEMPERATURE FOR THIS WATER HEATER TO 130°F.

Revisions



KREWSON

ARCHITECTS



MAYER


DESIGN

GROUP

P.C.

4400 South Lindbergh Blvd.
Suite 3
St. Louis, Missouri
63127-1603

Telephone: (314) 849-8777
Facsimile: (314) 849-4743



Adams

Architectural

Associates

P.O. BOX 230
CHESTERFIELD, MO
63306-0230

(636)537-9333
(536)537-1267 -FAX

Seal

Project Code

CCW-2201

Project Title

New
Car Wash
for
COWBOY
EXPRESS
CARWASH

210 MO-150
LEE SUMMIT, MISSOURI
64082

Drawing Title

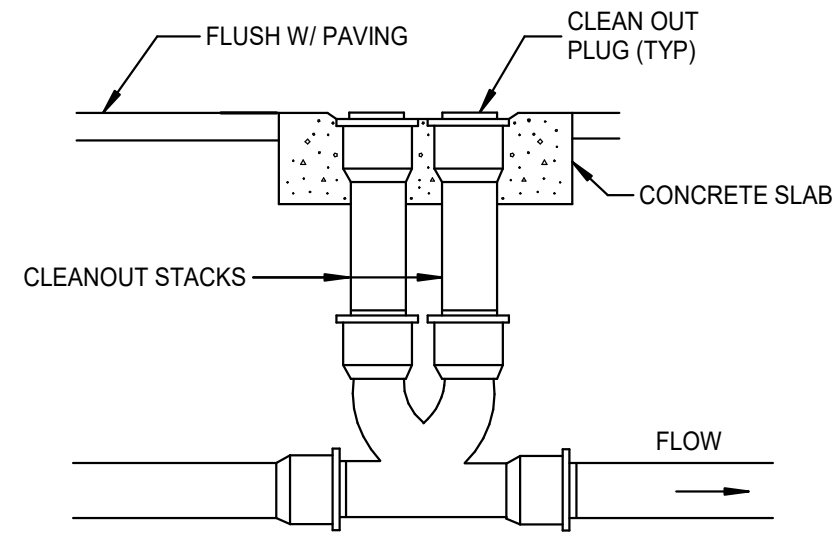
PLUMBING
SCHEDULES

Date Drawn Checked

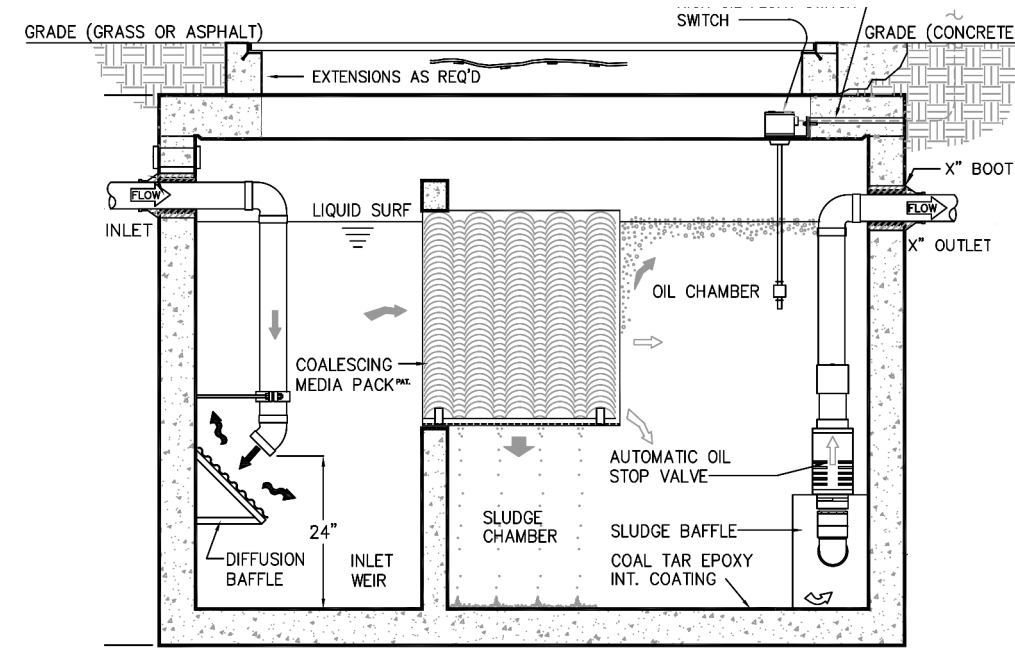
08-27-23 DB/mm MM/MA

Drawing Number

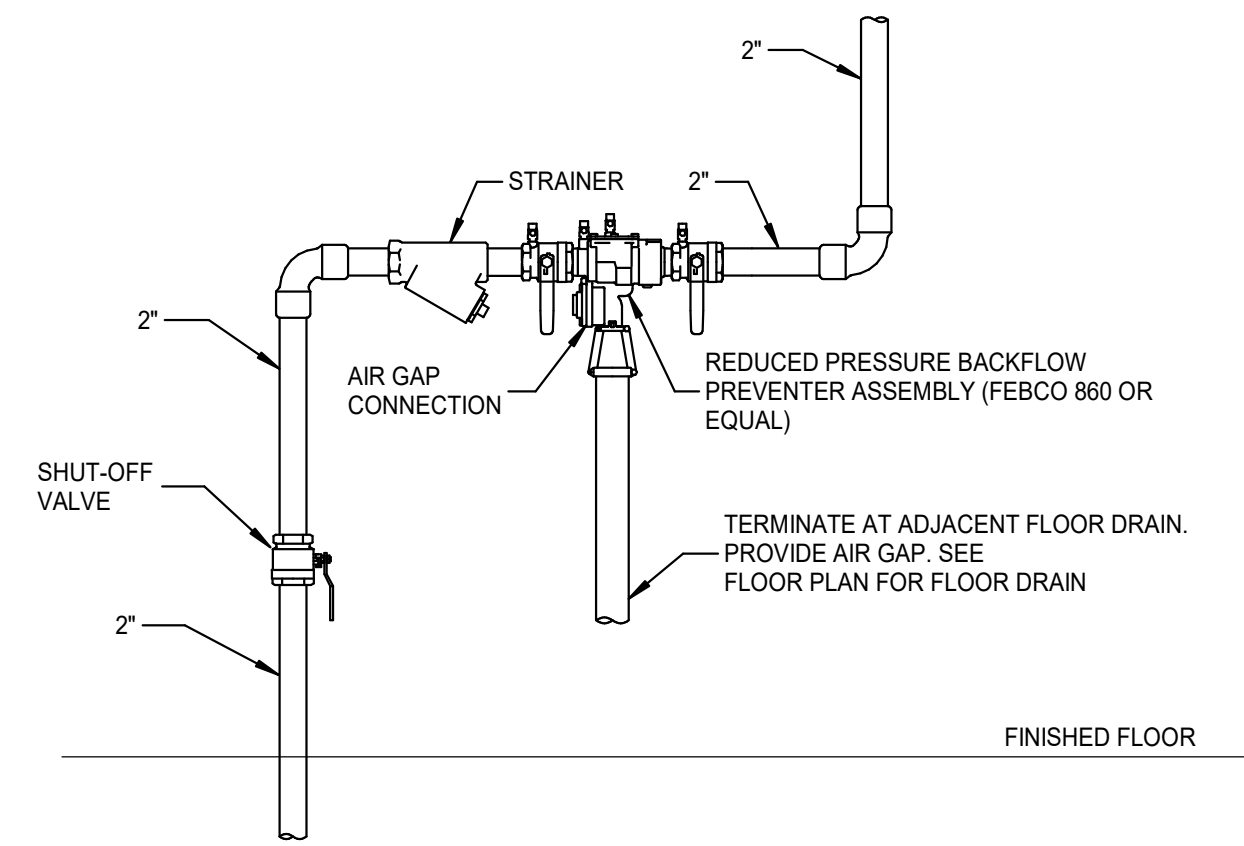
P2.1



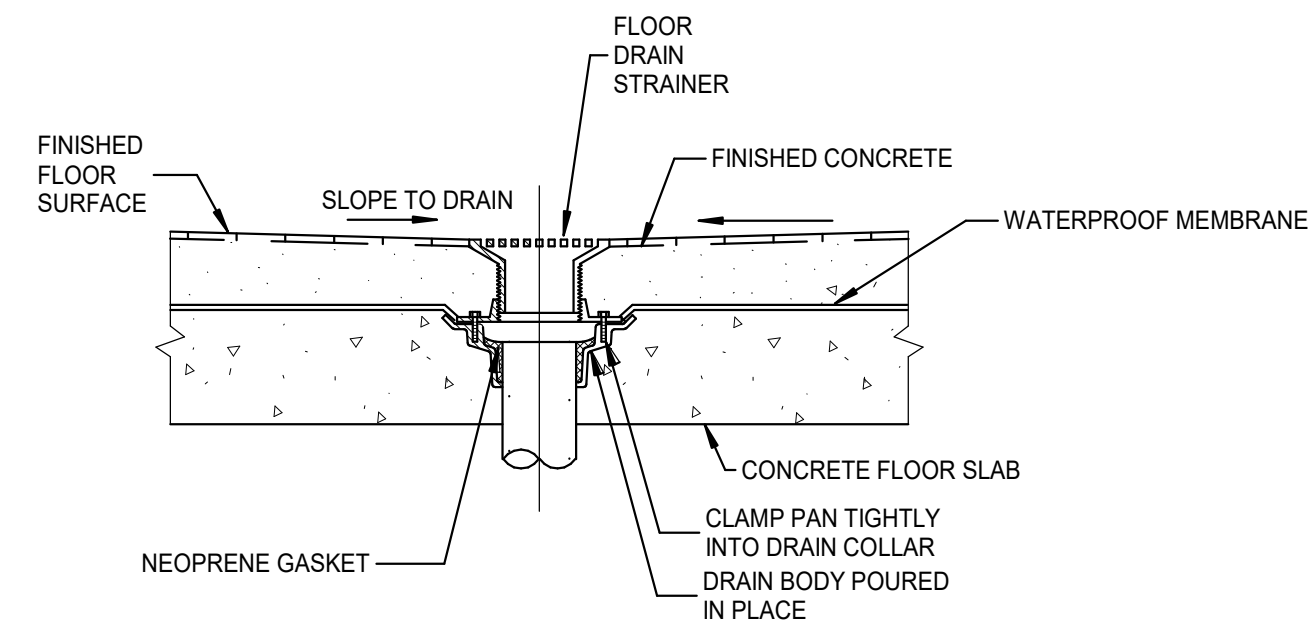
DUAL GRADE CLEANOUT DETAIL



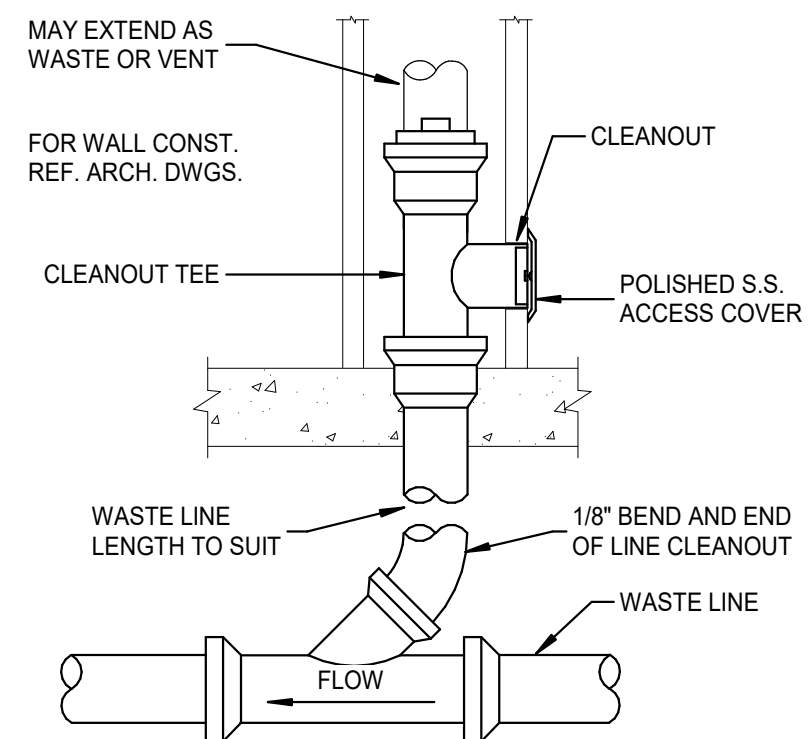
SAND / OIL SEPARATOR



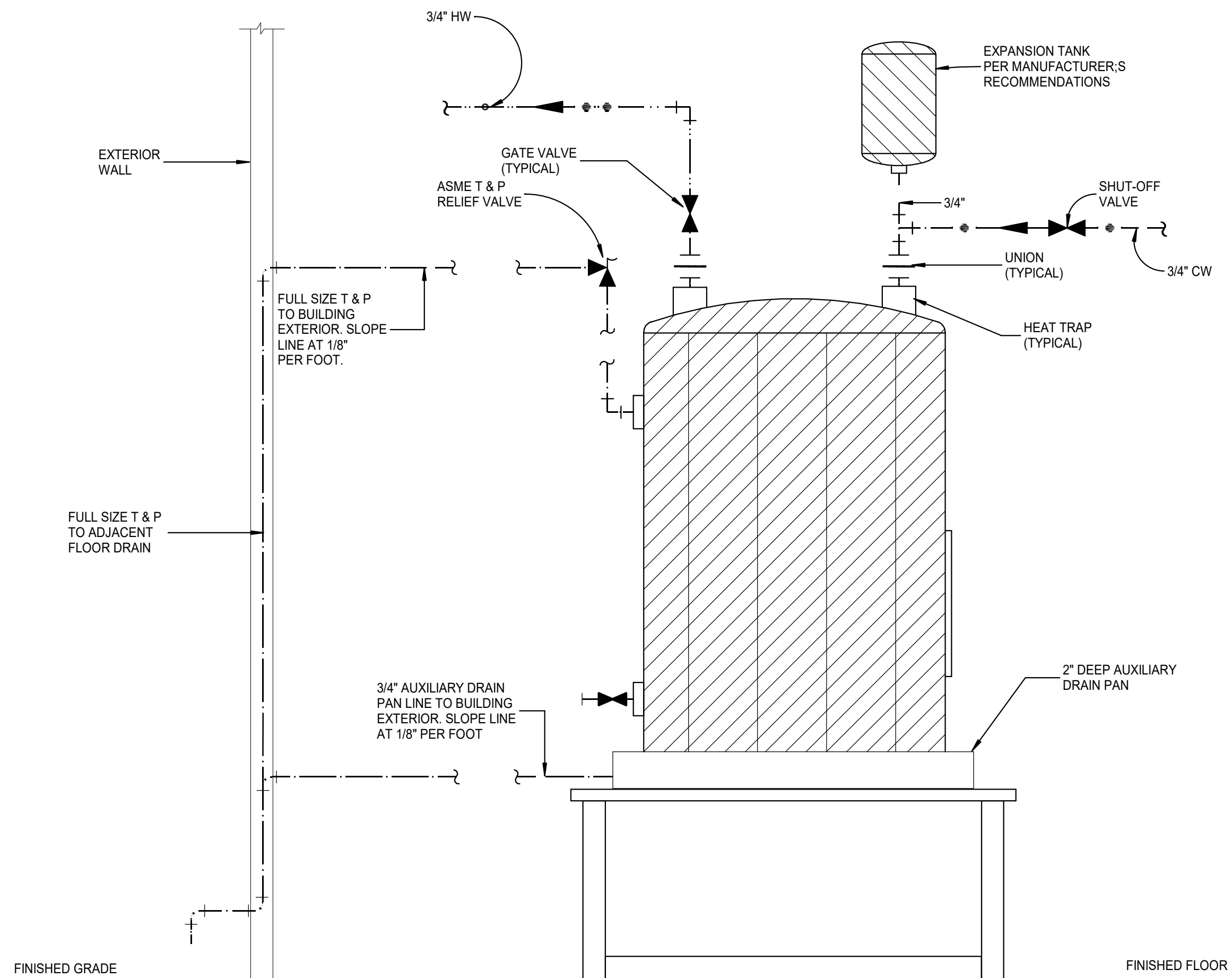
RPZ BACKFLOW PREVENTER DETAIL



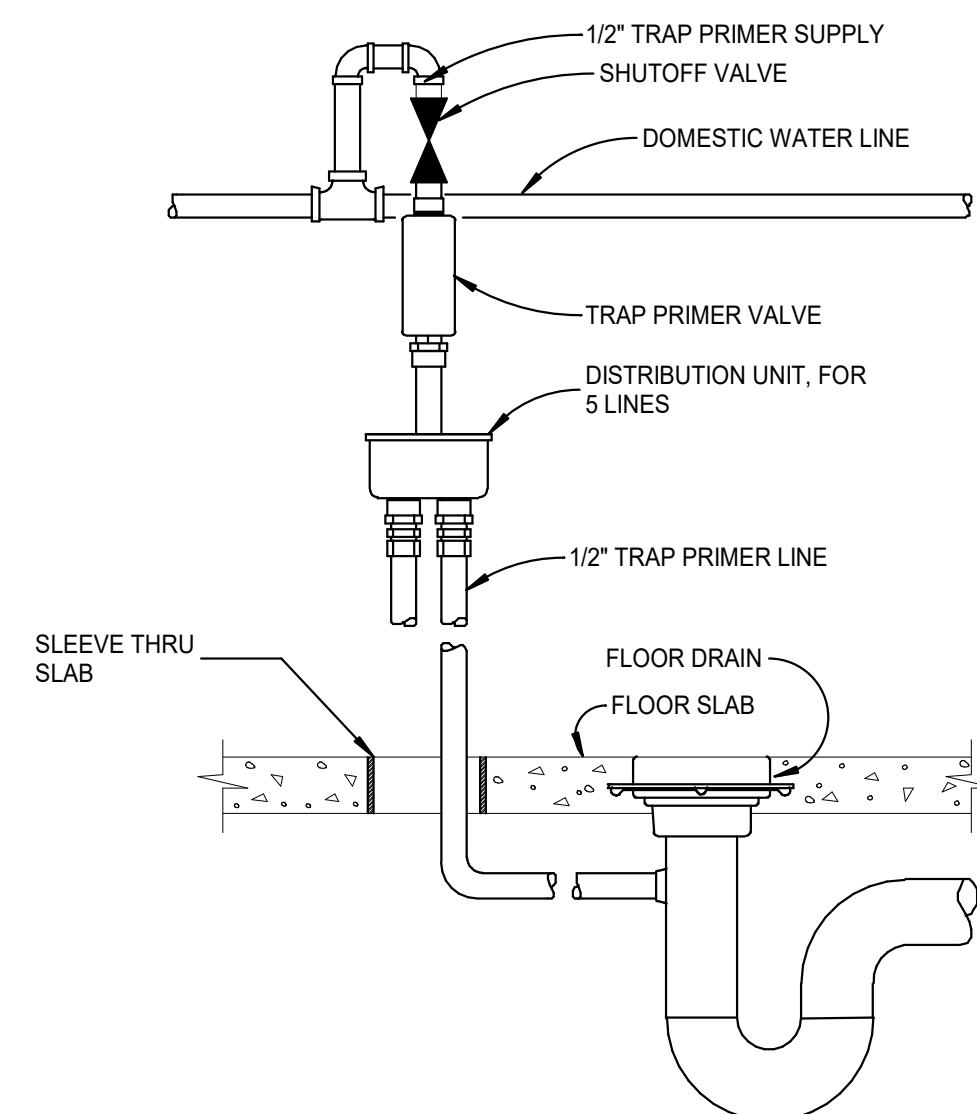
FLOOR DRAIN IN OPEN AREA



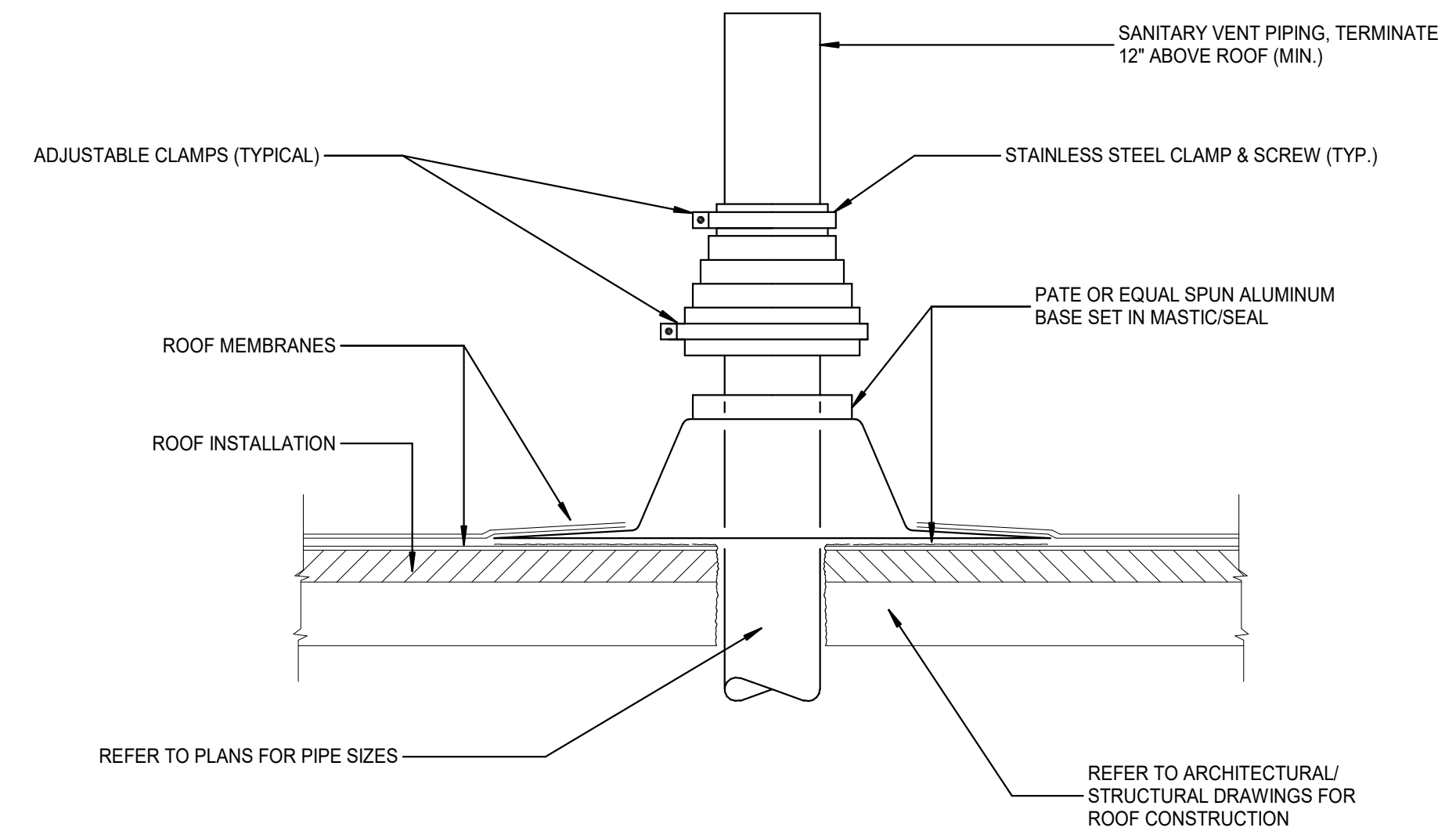
WALL CLEANOUT-FINISHED ROOMS



ELECTRIC WATER HEATER DETAIL



TRAP SEAL PRIMER DETAIL



PLUMBING VENT THROUGH ROOF

Revisions

KREWSON
LAW ASSOCIATES



**MAYER
DESIGN
GROUP**
P.C.

4400 South Lindbergh Blvd.
Suite 3
St. Louis, Missouri
63127-1603

Telephone: (314) 849-8777
Facsimile: (314) 849-4743



**Adams
Architectural
Associates**

P.O. BOX 230
CHESTERFIELD, MO
63506-0230
(636) 537-9333
(536) 537-1267 -FAX

Seal

Project Code

CCW-2201

Project Title

**New
Car Wash**
for
**COWBOY
EXPRESS
CARWASH**

210 MO-150
LEE SUMMIT, MISSOURI
64082

Drawing Title

**PLUMBING
DETAILS**

Date Drawn Checked
08-27-23 DB/mm MM/MA

Drawing Number

P3.1