

1

2

3

4

5

EXTERIOR MATERIAL LEGEND

STARBUCKS

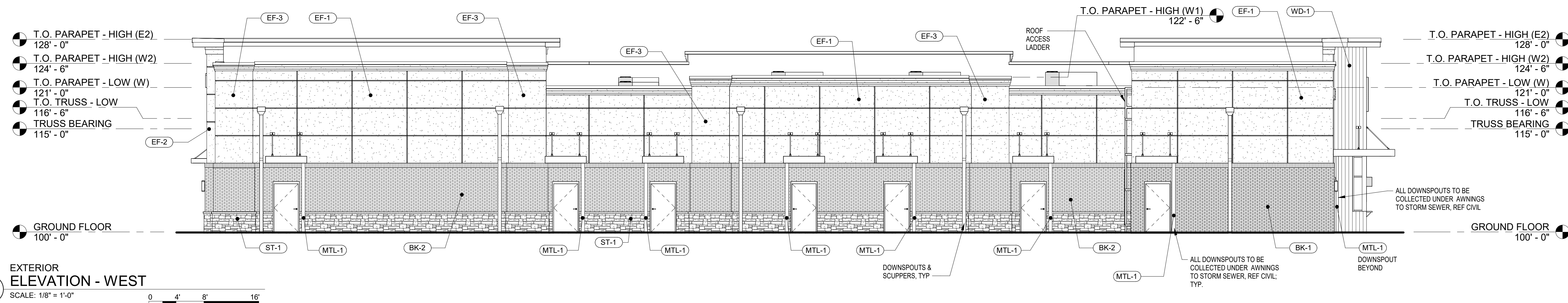
- FACE BRICK (BK-1)**
COLOR: CARBON BLACK
STYLE / MORTAR: MODULAR / SM770 SABLE
MANUFACTURER: GLEN-GERY
- WOOD SIDING (WD-1)**
COLOR: 1000 = LIGHT CEDAR
STYLE: 5/8" THICK x 7-1/4" WIDE
MANUFACTURER: IDENTITY WOOD PRODUCTS
- EIFS (EF-1)**
COLOR: SW 7018 DOVETAIL
STYLE: SANDBLAST TEXTURE
MANUFACTURER: DRYVIT
- METAL (MTL-1)**
COLOR: DARK BRONZE
STYLE: FLAT
MANUFACTURER: STARBUCKS STANDARD

* DARK BRONZE FOR ALUMINUM STOREFRONTS, FLASHINGS / COPINGS, CANOPIES, DOWNSPOUTS & SCUPPERS

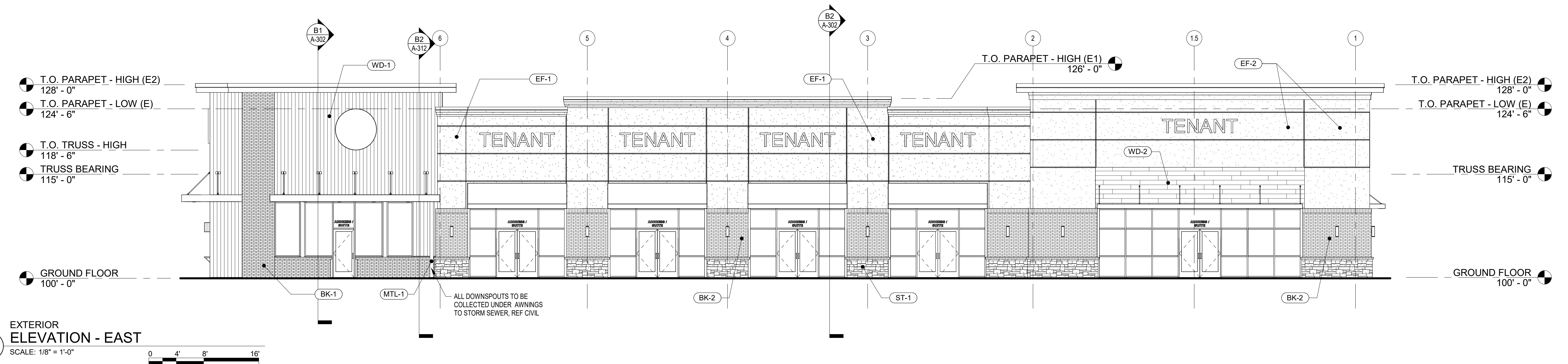
OTHER TENANTS

- THIN STONE VENEER (ST-1)**
COLOR: CHARCOAL
STYLE / MORTAR: TBD
MANUFACTURER: TBD
- FACE BRICK (BK-2)**
COLOR: CHARCOAL W/ BLACK MORTAR
STYLE: TBD
MANUFACTURER: TBD
- WOOD / FIBER CEMENT SIDING (WD-2)**
COLOR: TBD
STYLE: TBD
MANUFACTURER: TBD
- EIFS - MAIN (EF-1)**
COLOR: SW 7018 DOVETAIL
STYLE: SANDBLAST TEXTURE
MANUFACTURER: DRYVIT
- EIFS - ACCENT (EF-2)**
COLOR: WHITE (SW ID TBD)
STYLE: TBD
MANUFACTURER: TBD
- EIFS - ACCENT (EF-3)**
COLOR: DARKER GRAY (SW ID TBD)
STYLE: TBD
MANUFACTURER: TBD

* DARK BRONZE FOR ALUMINUM STOREFRONTS, FLASHINGS / COPINGS, CANOPIES, DOWNSPOUTS & SCUPPERS



A2 EXTERIOR ELEVATION - WEST
SCALE: 1/8" = 1'-0"



A1 EXTERIOR ELEVATION - EAST
SCALE: 1/8" = 1'-0"

schwerdt design group
architecture | interiors | planning
2231 sw wansmaker rd suite 303
topeka, kansas 66614-4275
phone: 785.273.7540
fax: 785.273.7219

500 north broadway suite 200
oklahoma city, ok 73102
phone: 405.231.3105
fax: 405.231.3115

PROGRESS PRINT
NOT FOR CONSTRUCTION
DATE: 05/17/2023

CORE & SHELL BUILDING FOR
OLDHAM VILLAGE - LOT 10
LEES SUMMIT, MISSOURI

SUBMISSION DATES
PROGRESS PRINT ONLY

SHEET TITLE
EXTERIOR ELEVATIONS

PROJECT NUMBER
230118

SHEET NUMBER
A-201

FILE PATH: C:\Users\Ryman\Local Files\230118 Oldham Marketplace - Lot 10 Core and Shell_V22_rak@sdcgarch.com.rvt
DATE: 7/13/2023 10:12:36 AM
DRAWN BY: Author

1

2

3

4

5

EXTERIOR MATERIAL LEGEND

STARBUCKS

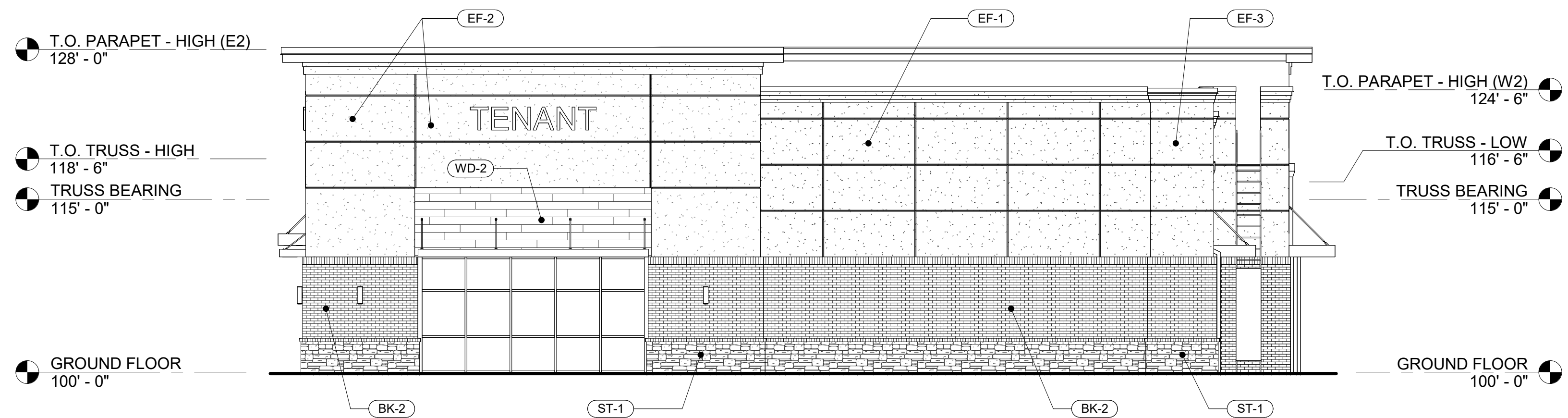
- FACE BRICK (BK-1)**
COLOR: CARBON BLACK
STYLE / MORTAR: MODULAR / SM770 SABLE
MANUFACTURER: GLEN-GERY
- WOOD SIDING (WD-1)**
COLOR: 1000 = LIGHT CEDAR
STYLE: 5/8" THICK x 7-1/4" WIDE
MANUFACTURER: IDENTITY WOOD PRODUCTS
- EIFS (EF-1)**
COLOR: SW 7018 DOVETAIL
STYLE: SANDBLAST TEXTURE
MANUFACTURER: DRYVIT
- METAL (MTL-1)**
COLOR: DARK BRONZE
STYLE: FLAT
MANUFACTURER: STARBUCKS STANDARD

* DARK BRONZE FOR ALUMINUM STOREFRONTS, FLASHINGS / COPINGS, CANOPIES, DOWNSPOUTS & SCUPPERS

OTHER TENANTS

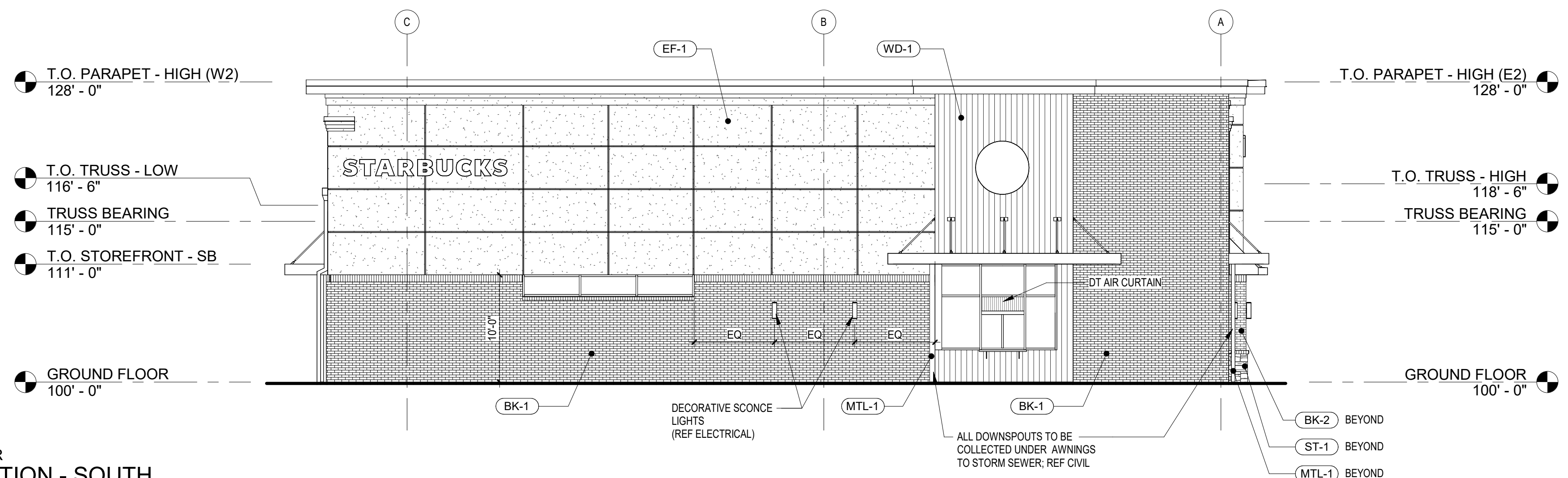
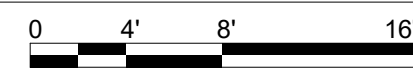
- THIN STONE VENEER (ST-1)**
COLOR: CHARCOAL
STYLE / MORTAR: TBD
MANUFACTURER: TBD
- FACE BRICK (BK-2)**
COLOR: CHARCOAL W/ BLACK MORTAR
STYLE: TBD
MANUFACTURER: TBD
- WOOD / FIBER CEMENT SIDING (WD-2)**
COLOR: TBD
STYLE: TBD
MANUFACTURER: TBD
- EIFS - MAIN (EF-1)**
COLOR: SW 7018 DOVETAIL
STYLE: SANDBLAST TEXTURE
MANUFACTURER: DRYVIT
- EIFS - ACCENT (EF-2)**
COLOR: WHITE (SW ID TBD)
STYLE: TBD
MANUFACTURER: TBD
- EIFS - ACCENT (EF-3)**
COLOR: DARKER GRAY (SW ID TBD)
STYLE: TBD
MANUFACTURER: TBD

* DARK BRONZE FOR ALUMINUM STOREFRONTS, FLASHINGS / COPINGS, CANOPIES, DOWNSPOUTS & SCUPPERS



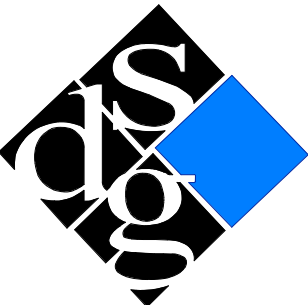
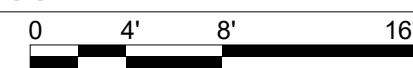
B2 EXTERIOR ELEVATION - NORTH

SCALE: 1/8" = 1'-0"



B1 EXTERIOR ELEVATION - SOUTH

SCALE: 1/8" = 1'-0"



schwerdt design group
architecture | interiors | planning
2231 sw wansmaker rd suite 303
tpeka, kansas 66614-4275
phone: 785.273.7540
fax: 785.273.7219
500 north broadway suite 200
oklahoma city, ok 73102
phone: 405.231.3105
fax: 405.231.3115

PROGRESS PRINT

NOT FOR CONSTRUCTION

DATE: 05/17/2023

CORE & SHELL BUILDING FOR
OLDHAM VILLAGE - LOT 10
LEES SUMMIT, MISSOURI

SUBMISSION DATES
PROGRESS PRINT ONLY

SHEET TITLE
EXTERIOR ELEVATIONS

PROJECT NUMBER
230118

SHEET NUMBER
A-202

1

2

3

4

5

EXTERIOR MATERIAL LEGEND - PRESENTATION

STARBUCKS

- FACE BRICK (BK-1)**
COLOR: CARBON BLACK
STYLE / MORTAR: MODULAR / SM770 SABLE
MANUFACTURER: GLEN-GERY
- WOOD SIDING (WD-1)**
COLOR: 1000 = LIGHT CEDAR
STYLE: 5/8" THICK x 7-1/4" WIDE
MANUFACTURER: IDENTITY WOOD PRODUCTS
- EIFS (EF-1)**
COLOR: SW 7018 DOVETAIL
STYLE: SANDBLAST TEXTURE
MANUFACTURER: DRYVIT
- METAL (MTL-1)**
COLOR: DARK BRONZE
STYLE: FLAT
MANUFACTURER: STARBUCKS STANDARD

* DARK BRONZE FOR ALUMINUM STOREFRONTS, FLASHINGS / COPINGS & CANOPIES, DOWNSPOUTS & SCUPPERS

OTHER TENANTS

- THIN STONE VENEER (ST-1)**
COLOR: CHARCOAL
STYLE / MORTAR: TBD
MANUFACTURER: TBD
- FACE BRICK (BK-2)**
COLOR: CHARCOAL W/ BLACK MORTAR
STYLE: TBD
MANUFACTURER: TBD
- WOOD / FIBER CEMENT SIDING (WD-2)**
COLOR: TBD
STYLE: TBD
MANUFACTURER: TBD
- EIFS - MAIN (EF-1)**
COLOR: SW 7018 DOVETAIL
STYLE: SANDBLAST TEXTURE
MANUFACTURER: DRYVIT
- EIFS - ACCENT (EF-2)**
COLOR: WHITE (SW ID TBD)
STYLE: TBD
MANUFACTURER: TBD
- EIFS - ACCENT (EF-3)**
COLOR: DARKER GRAY (SW ID TBD)
STYLE: TBD
MANUFACTURER: TBD

* DARK BRONZE FOR ALUMINUM STOREFRONTS, FLASHINGS / COPINGS & CANOPIES, DOWNSPOUTS & SCUPPERS



A2 RENDERED ELEVATION - WEST
SCALE: 1/8" = 1'-0"



A1 RENDERED ELEVATION - EAST
SCALE: 1/8" = 1'-0"



schwerdt design group
architecture | interiors | planning
2231 sw waramaker rd suite 303
topeka, kansas 66614-4275
phone: 785.273.7540
fax: 785.273.7219
500 north broadway suite 200
oklahoma city, ok 73102
phone: 405.231.3105
fax: 405.231.3115

PROGRESS PRINT

NOT FOR CONSTRUCTION

DATE: 05/17/2023

**CORE & SHELL BUILDING FOR
OLDHAM VILLAGE - LOT 10**
LEES SUMMIT, MISSOURI

SUBMISSION DATES
PROGRESS PRINT ONLY

SHEET TITLE
EXTERIOR ELEVATIONS -
RENDERED

PROJECT NUMBER
230118

SHEET NUMBER
A-901

FILE PATH: C:\Users\Ryman\Local Files\230118 Oldham Marketplace - Lot 10 Core and Shell_V22_rak@sdcgarch.com.rvt
 DATE: 7/13/2023 10:12:43 AM
 DRAWN BY: Author

1

2

3

4

5

EXTERIOR MATERIAL LEGEND - PRESENTATION

STARBUCKS

- FACE BRICK (BK-1)**
COLOR: CARBON BLACK
STYLE / MORTAR: MODULAR / SM770 SABLE
MANUFACTURER: GLEN-GERY
- WOOD SIDING (WD-1)**
COLOR: 1000 = LIGHT CEDAR
STYLE: 5/8" THICK x 7-1/4" WIDE
MANUFACTURER: IDENTITY WOOD PRODUCTS
- EIFS (EF-1)**
COLOR: SW 7018 DOVETAIL
STYLE: SANDBLAST TEXTURE
MANUFACTURER: DRYVIT
- METAL (MTL-1)**
COLOR: DARK BRONZE
STYLE: FLAT
MANUFACTURER: STARBUCKS STANDARD

* DARK BRONZE FOR ALUMINUM STOREFRONTS, FLASHINGS / COPINGS & CANOPIES, DOWNSPOUTS & SCUPPERS

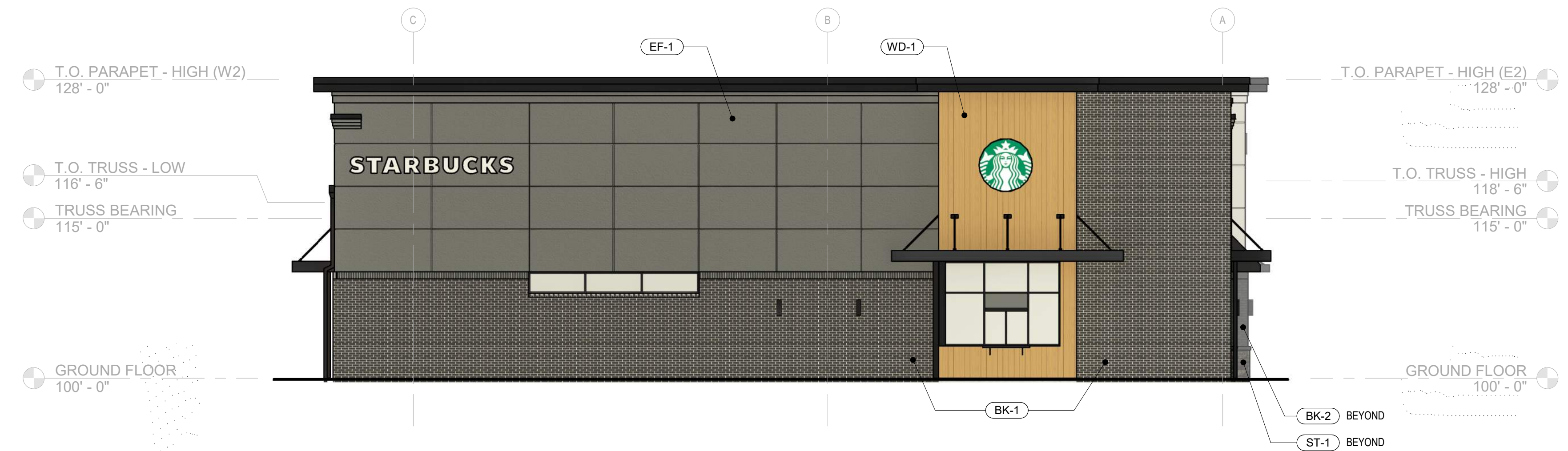
OTHER TENANTS

- THIN STONE VENEER (ST-1)**
COLOR: CHARCOAL
STYLE / MORTAR: TBD
MANUFACTURER: TBD
- FACE BRICK (BK-2)**
COLOR: CHARCOAL W/ BLACK MORTAR
STYLE: TBD
MANUFACTURER: TBD
- WOOD / FIBER CEMENT SIDING (WD-2)**
COLOR: TBD
STYLE: TBD
MANUFACTURER: TBD
- EIFS - MAIN (EF-1)**
COLOR: SW 7018 DOVETAIL
STYLE: SANDBLAST TEXTURE
MANUFACTURER: DRYVIT
- EIFS - ACCENT (EF-2)**
COLOR: WHITE (SW ID TBD)
STYLE: TBD
MANUFACTURER: TBD
- EIFS - ACCENT (EF-3)**
COLOR: DARKER GRAY (SW ID TBD)
STYLE: TBD
MANUFACTURER: TBD

* DARK BRONZE FOR ALUMINUM STOREFRONTS, FLASHINGS / COPINGS & CANOPIES, DOWNSPOUTS & SCUPPERS



B2 RENDERED ELEVATION - NORTH
SCALE: 1/8" = 1'-0"
0 4' 8' 16'



B1 RENDERED ELEVATION - SOUTH
SCALE: 1/8" = 1'-0"
0 4' 8' 16'



schwerdt design group
architecture | interiors | planning
2231 sw warramaker rd. suite 303
tpeka, kansas 66614-4275
phone: 785.273.7540
fax: 785.273.7219
500 north broadway. suite 200
oklahoma city, ok 73102
phone: 405.231.3105
fax: 405.231.3115

PROGRESS PRINT

NOT FOR CONSTRUCTION

DATE: 05/17/2023

**CORE & SHELL BUILDING FOR
OLDHAM VILLAGE - LOT 10**
LEES SUMMIT, MISSOURI

SUBMISSION DATES
PROGRESS PRINT ONLY

SHEET TITLE
EXTERIOR ELEVATIONS -
RENDERED

PROJECT NUMBER
230118

SHEET NUMBER
A-902

FILE PATH: C:\Users\Ryman\Local Files\230118 Oldham Marketplace - Lot 10 Core and Shell_V22_rak@sdcgarch.com.rvt
DATE: 7/13/2023 10:12:47 AM
DRAWN BY: Author