

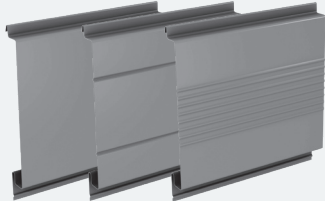


# IW SERIES WALL SYSTEM

## Concealed Fastener Panel

IW-10A, IW-11A, IW-12A, IW-13A, IW-14A, IW-15A

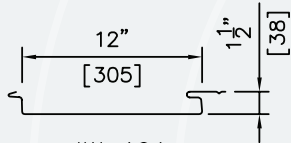
## TECHNICAL DATA SHEET



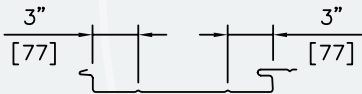
IW-10A IW-11A IW-12A



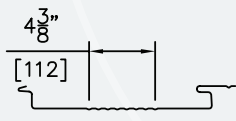
IW-13A IW-14A IW-15A



IW-10A



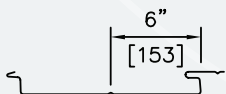
IW-11A



IW-12A



IW-13A



IW-14A



IW-15A

### DESCRIPTION

IW-10A Series offers six interesting configurations: IW-10A, IW-11A, IW-12A, IW-13A, IW-14A and IW-15A. All IW panels share a common lock-joint design which makes them interchangeable on a project. The lock also permits the placement of concealed fasteners, and minimizes moisture intrusion. All IW Series wall panels can be installed in a variety of rainscreen applications to form a complete wall system. Systems may vary from an uninsulated screen wall to MetalWrap™ Series, an insulated composite backup panel system with Advanced Thermal and Moisture Protection (ATMP®).

### GENERAL DESIGN OPTIONS

IW-10A SERIES		
PANEL THICKNESS	1½" [38mm]	
PANEL COVERAGE	12" [305mm]	
SIDE LAP	Interlocking	
END LAPS	<b>Galvanized<sup>1</sup> (G90)</b> (see standard detail) Shop notched and swaged for vertical applications only  2" [51mm] for 22 [0.76mm] and 20 [0.91mm] gages only <sup>4,5,6,8</sup>  Rivets may be required for proper alignment. Flash or extrusion for all gages <sup>9</sup>	<b>Aluminum<sup>1</sup> (3003-H14)</b> (see standard detail) Shop notched and swaged for vertical applications only  2" [51mm] for 0.040" [1.02mm] only <sup>4,5,6,8</sup>  Flash or extrusion for all other thicknesses <sup>6</sup>
	GAGES (STANDARD)	20 [0.91mm], 22 [0.76mm]
GAGES (OPTIONAL)	18 [1.19mm] <sup>3,5,7</sup>	0.050" [1.27mm] <sup>5</sup>
STANDARD LENGTH	5 [1.524m] - 25 ft. [7.62m]	5 [1.524m] - 20 ft. [6.096m]
STANDARD TEXTURE	Embossed <sup>2,10</sup> (20 [0.91mm] - 22 [0.76mm] gage only)	Embossed <sup>2,9</sup>
OPTIONAL TEXTURE	Smooth	Smooth
FINISHES	See CENTRIA Color Chart	See CENTRIA Color Chart



- Alternate base material, panel lengths and gages may also be available. Contact CENTRIA.
- Embossing is non-directional.
- IW-12A and IW-13A are not available in 18 gage.
- Shop swaged ends are not available for IW-12A, IW-14A, IW-15A.
- Shop swaged ends are not available for 18 gage steel, 0.050" aluminum.
- MicroLine Extrusions can be used with horizontally installed panels only.
- 18 gage cannot be embossed.
- Swaged for vertical application only
- 0.050" Embossed (optional gauge) is best effort ONLY
- Not available in 18 ga.
- All IW panels are erected from top to bottom when erected in a horizontal application

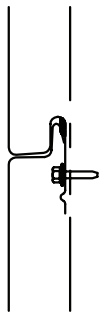
## IW-10A-15A DESIGN FEATURES & BENEFITS

- Concealed fastener design minimizes exposed fasteners
- Common lock-joint design makes all IW series panels interchangeable on a project & minimizes moisture intrusion
- Can be installed vertically or horizontally
- Excellent for new construction and retrofit projects
- Cost-effective, all-weather installation capability shortens installation time; permits fast-track scheduling
- Panels are available with embossed or smooth finishes

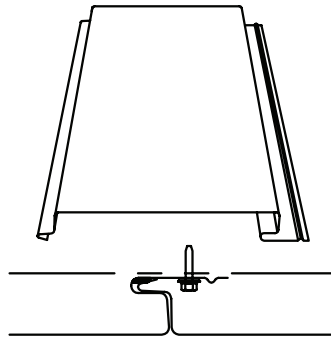


## IW-10A-15A TESTING

TEST	CHARACTERISTIC	TEST METHOD	TEST TITLE	RESULTS
 ENVIRONMENTAL	AIR LEAKAGE	IW products are intended to be used only as rainscreens; an appropriate air & moisture barrier must be installed behind the product to comply with code requirements.		
	WATER PENETRATION			
 STRUCTURAL	IMPACT RESISTANCE	Approved for non-HVHZ only; see FL3174.		
	WIND LOADS	ASTM E72	Determines structural performance under uniform static air pressure difference	See load-span tables for allowable spans/loads under positive or negative loading.



HORIZONTAL  
JOINT DETAIL



VERTICAL  
JOINT DETAIL

## NOTES

- For information on special applications, contact your local CENTRIA Sales Representative.
- All IW panels may be used on walls & soffits but not on roofs.
- Panel length tolerance is  $\pm 1/4"$  [6mm].
- For protective coatings - see CENTRIA color chart.
- Oil canning within mill tolerances will not be cause for rejection.
- Panels must be ordered as "horizontal" when used in a horizontal application.
- Horizontal Panels must be erected from top to bottom.