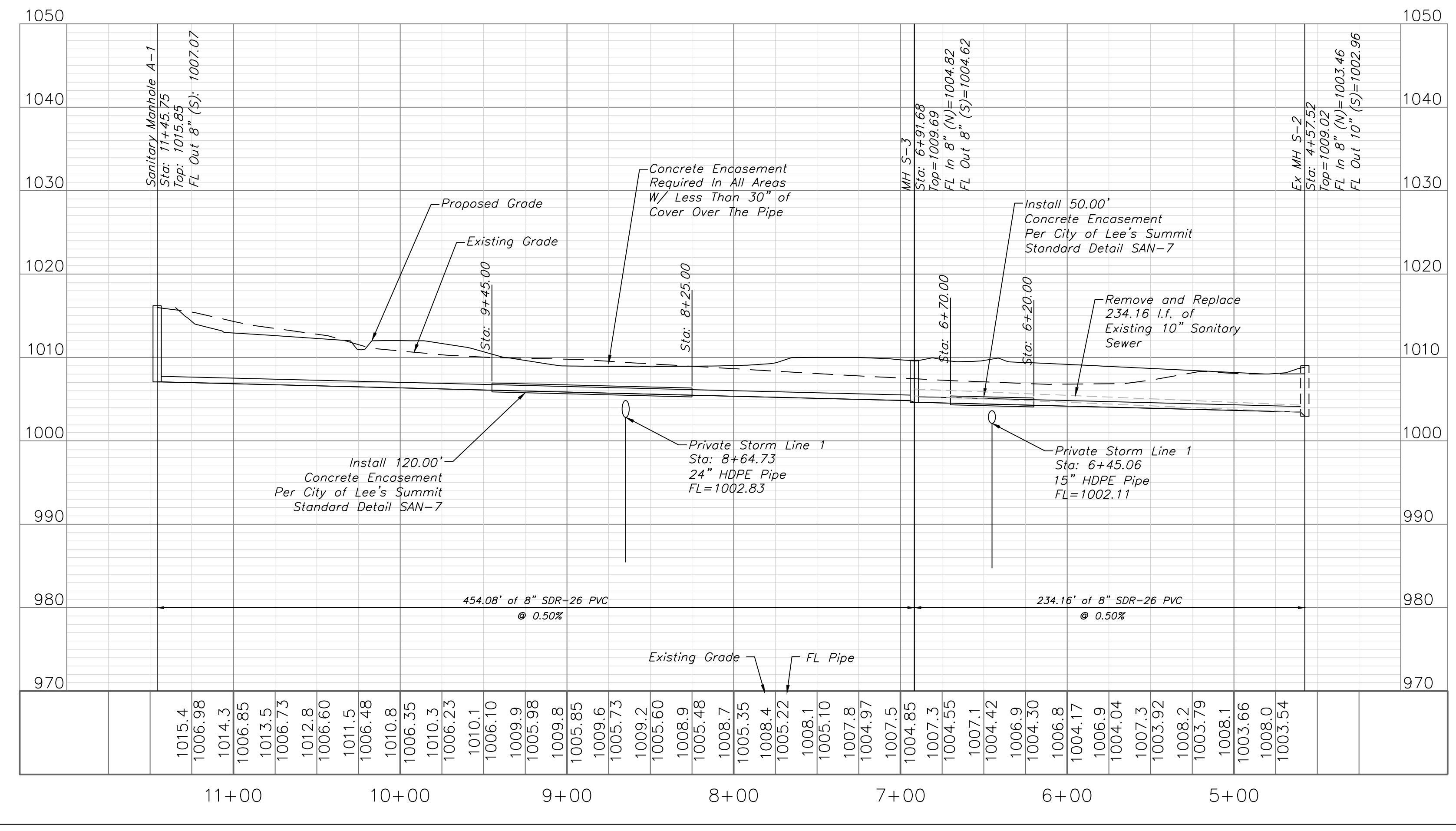


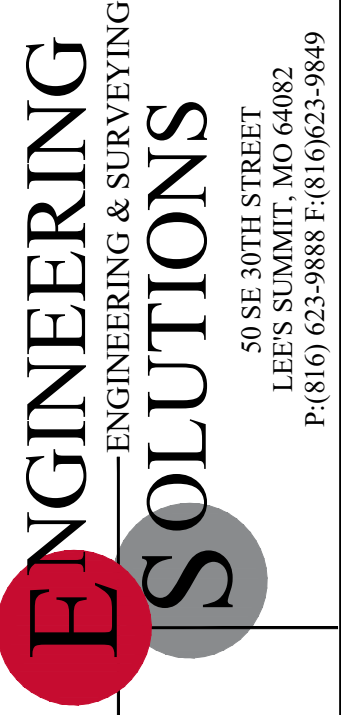
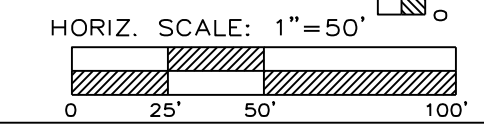
GENERAL NOTE:
 1 - ALL CONSTRUCTION SHALL CONFORM TO THE CITY OF LEE'S SUMMIT DESIGN AND CONSTRUCTION MANUAL AS ADOPTED BY ORDINANCE 5813.
 2 - TRENCH CHECKS SHALL BE INSTALLED AT ALL SANITARY WYES LOCATION.

OFF-SITE SANITARY LINE A



As Built
 Oct 25 23
 To the best of our knowledge, these plans and related markups represent the as-built condition of the described scope of work
 Davidson AE
 jon

RELEASED FOR CONSTRUCTION
 As Noted on Plans Review
 Development Services Department
 Lee's Summit, Missouri
 10/26/2022



Professional Registration
 Missouri
 Engineering 200502188-D
 Surveying 20050319-D
 Kansas
 Engineering E-1895
 Surveying LS-218
 Oklahoma
 Engineering 6254
 Nebraska
 Engineering CA2821

Project:
 TOWN CENTER,
 LSHO
 Issue Date:
 September 23, 2022

Sanitary Plan and Profile
 Public Sanitary Sewer Plans for:
 Town Centre Lot 1
 Lee's Summit, Jackson County, Missouri



Matthew J. Schlicht
 MO PE 2006019708
 KS PE 19071
 OK PE 25226

REVISIONS

Utility Notes

- Boundary information, existing utilities and topographic features shown are based on information supplied by owner, surveyor, and others.
- The existing utility locations shown on these plans are approximate and may not include all utility lines present. The contractor shall be responsible to make One Call and coordinate field location of all existing underground utilities prior to beginning excavation/construction activities.
- The contractor shall be responsible for any damage to any utilities or their structures during excavation/construction activities.
- The contractor shall coordinate and be responsible for connection fees, system development fees, taxes, etc. for all main connections and/or extensions with and from the city and/or respective utility unless otherwise coordinated with the Owner. All utility services for this project shall be coordinated with respective utility company by contractor.
- The contractor shall be responsible for adjusting all at-grade utilities such as manhole covers, valve box covers, etc. to finish grade, whether specifically indicated in these plans or not.
- Utilities shown on the plan with specific elevations and/or structure locations are SUE quality level "B", ie: storm sewer, sanitary sewer, water hydrants & valves, utility poles, etc. All other existing utility information shown is SUE quality level "D", primarily retracement of one-call and city records.

Property Legend

- right of way
- property lines
- easements
- setbacks

Local Benchmarks:

- BM-1:** (Sanitary Sewer Manhole, Center of Lid)
Elevation: 1006.88'
N: 1013449.78
E: 2826933.88
- BM-2:** (Storm Sewer Curb Inlet, Center of Lid)
Elevation: 994.34'
N: 1013518.71
E: 2826136.03

Grading Legend

- existing minor contour
- existing major contour
- proposed minor contour
- proposed major contour

Utility Legend

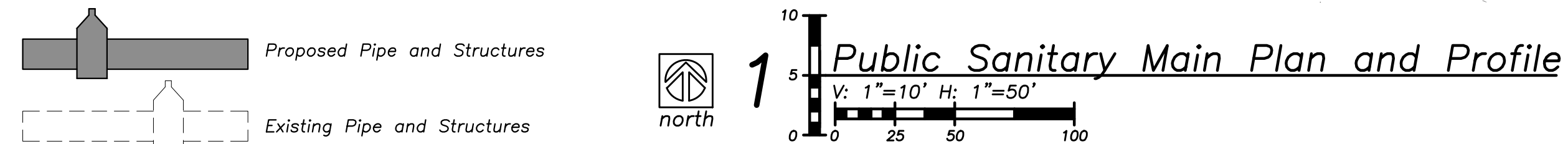
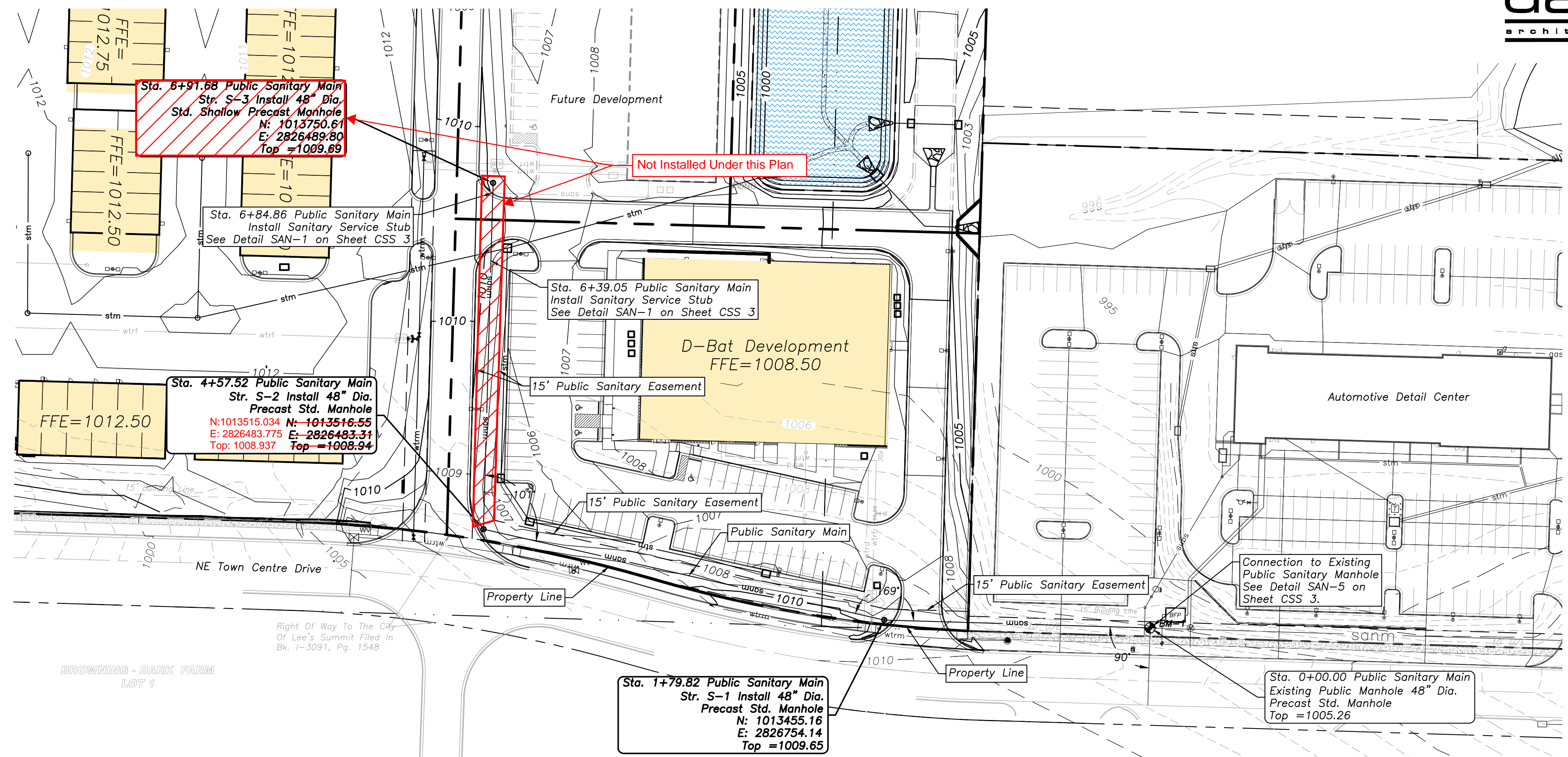
- existing
- proposed

Linetypes

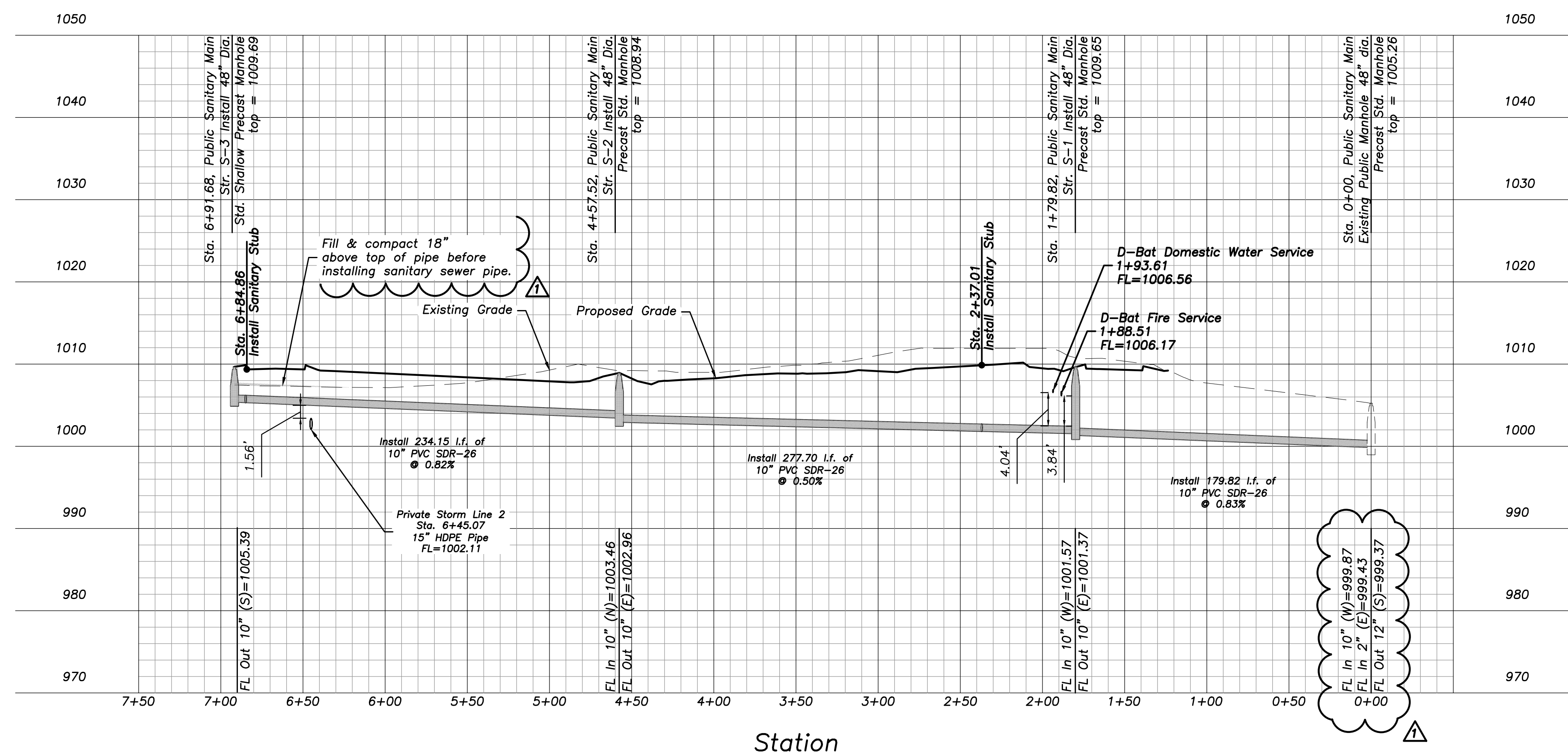
- sanitary main
- sanitary service
- storm sewer (existing)
- storm sewer (solid wall, proposed)
- storm sewer (solid wall, proposed)
- storm sewer (perforated, proposed)
- water main
- water service (fire)
- water service (domestic)
- water service (irrigation)
- natural gas main
- natural gas service schematic
- underground primary electric
- underground secondary electric
- overhead electric
- underground cable/phone/data
- underground cable/phone/data service
- fence-chainlink
- fence-wood
- fence-barbed wire
- treeline

Symbols

- sanitary manhole
- service cleanout
- force main release valve
- rectangular structure
- circular structure
- fire hydrant
- water valve
- water meter
- backflow preventer
- natural gas meter
- service transformer (pad mount)
- primary switch gear
- light pole
- cable/phone/data junction box
- street light
- pedestrian street light
- electric pole
- guy wire
- end section



Public Sanitary Main



a new development for
Town Centre Lot 1
520 NE Town Centre Drive
Lee's Summit, Missouri

date 01.31.2022
drawn by JMP
checked by PAM
revisions
03.01.2022 01

RELEASED FOR CONSTRUCTION
As Noted on Plans Review
Development Services Department
Lee's Summit, Missouri
04/15/2022

sheet number
CSS 2
drawing type
Permit
project number
20231