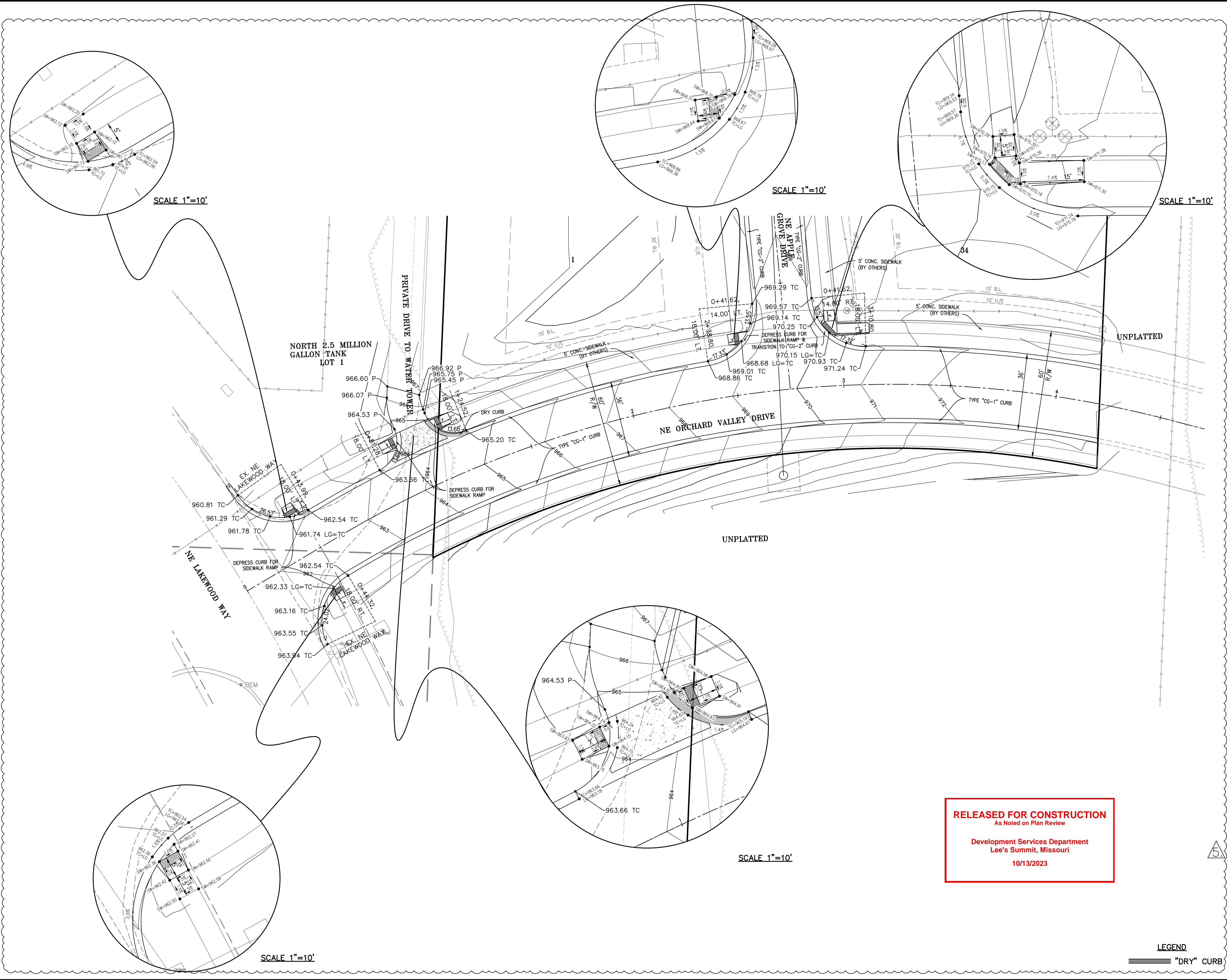
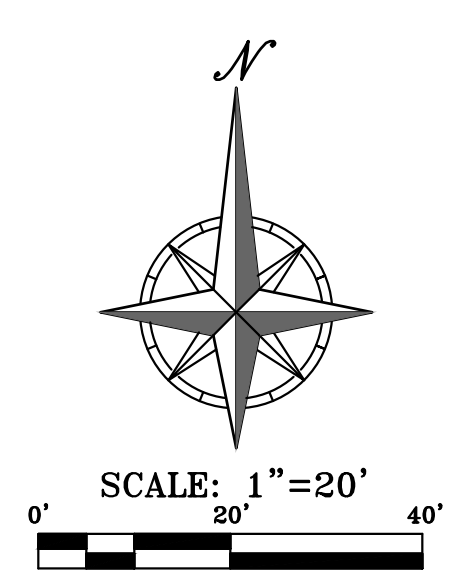


V:\PHILIPS-SERVER\Projects\211142\Drawings\STORM\INTERSECTIONS.dwg Layout:1 Oct 11, 2023 3:11pm Kyle Detlers



**RELEASED FOR CONSTRUCTION**  
 As Noted on Plan Review  
  
 Development Services Department  
 Lee's Summit, Missouri  
  
 10/13/2023

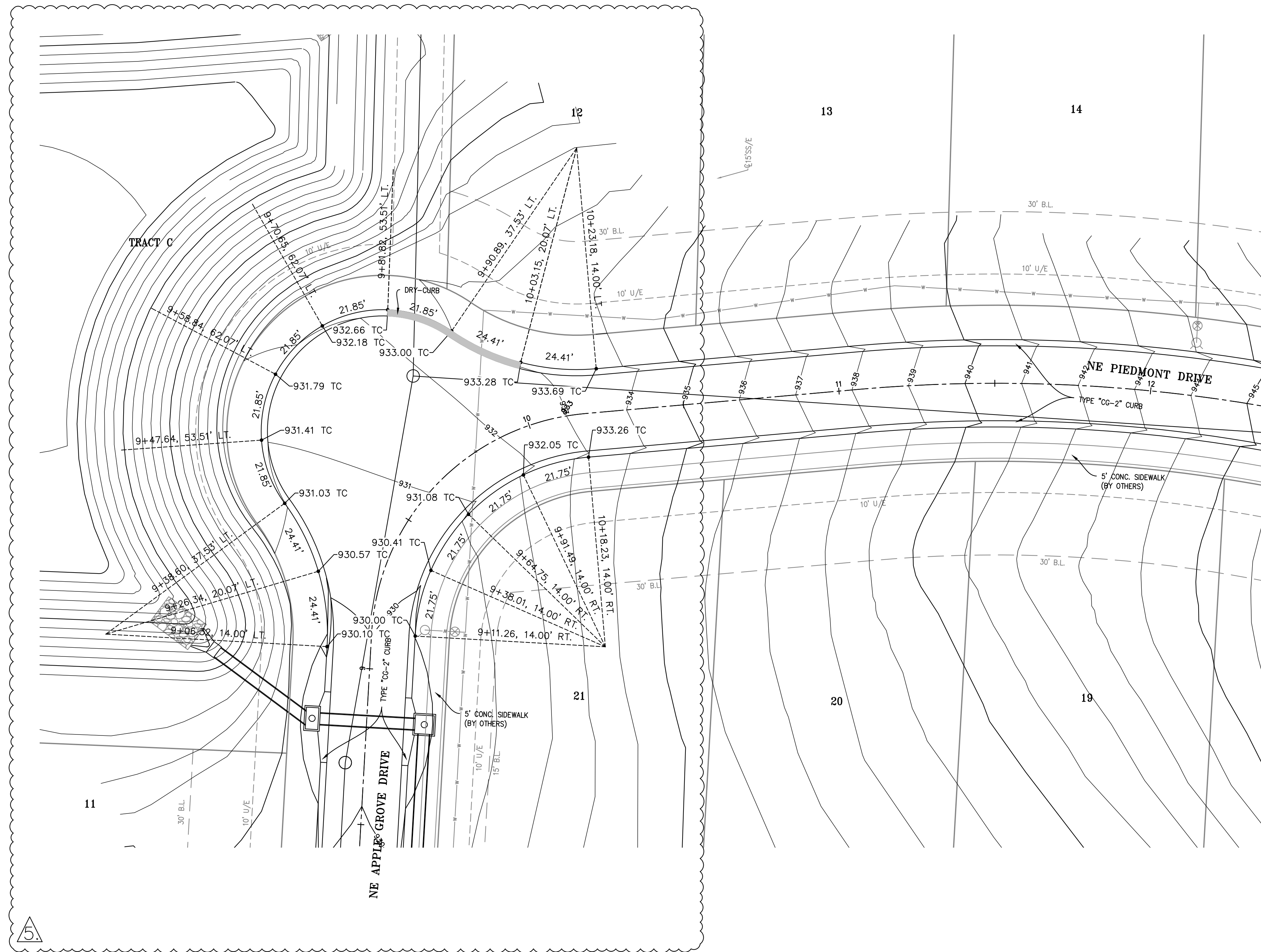
LEGEND  
 "DRY" CURB



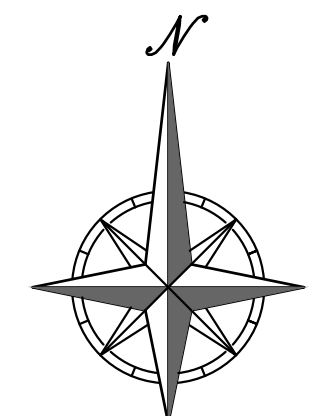
**PHELPS ENGINEERING, INC.**  
 1270 N. Winchester  
 Olathe, Kansas 66066  
 (913) 993-1155  
 Fax (913) 993-1166  
 www.phelpsiengineering.com  
  
 PLANNING  
 ENGINEERING  
 IMPLEMENTATION

**INTERSECTION DETAILS**  
 ORCHARD WOODS  
 LEE'S SUMMIT, JACKSON COUNTY, MISSOURI

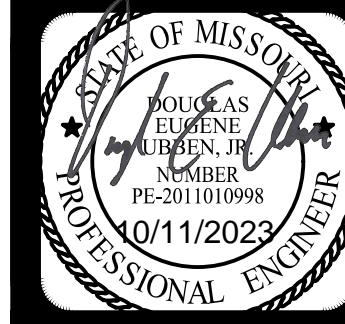
PROJECT NO.	211142	DATE	BY	APP.	REVISIONS:
DATE: 10-21-2022	DRAWN: BAG	1. 2-27-23	JMO	DEU	REVISED PER CITY COMMENTS
CHECKED: DEU	APPROVED: DEU	2. 4-24-23	JMO	DEU	REVISED PER CITY COMMENTS
CITY OF AUTHORIZATION		3. 6-15-23	BAG	DEU	REVISED PER CITY COMMENTS
LAND SURVEYING - LS-82		4. 7-20-23	MRH	DEU	REVISED PER CITY COMMENTS
ENGINEERING - E-391		5. 10-11-23	KAD	DEU	REVISED TOP OF CURB ELEVATIONS
CERTIFICATE OF AUTHORIZATION					
LAND SURVEYING - 200700128					
ENGINEERING - 200700308					



**RELEASED FOR CONSTRUCTION**  
 As Noted on Plan Review  
  
 Development Services Department  
 Lee's Summit, Missouri  
  
 10/13/2023



**LEGEND**  
 "DRY" CURB  
 SCALE: 1" = 20'  
 0' 20' 40'



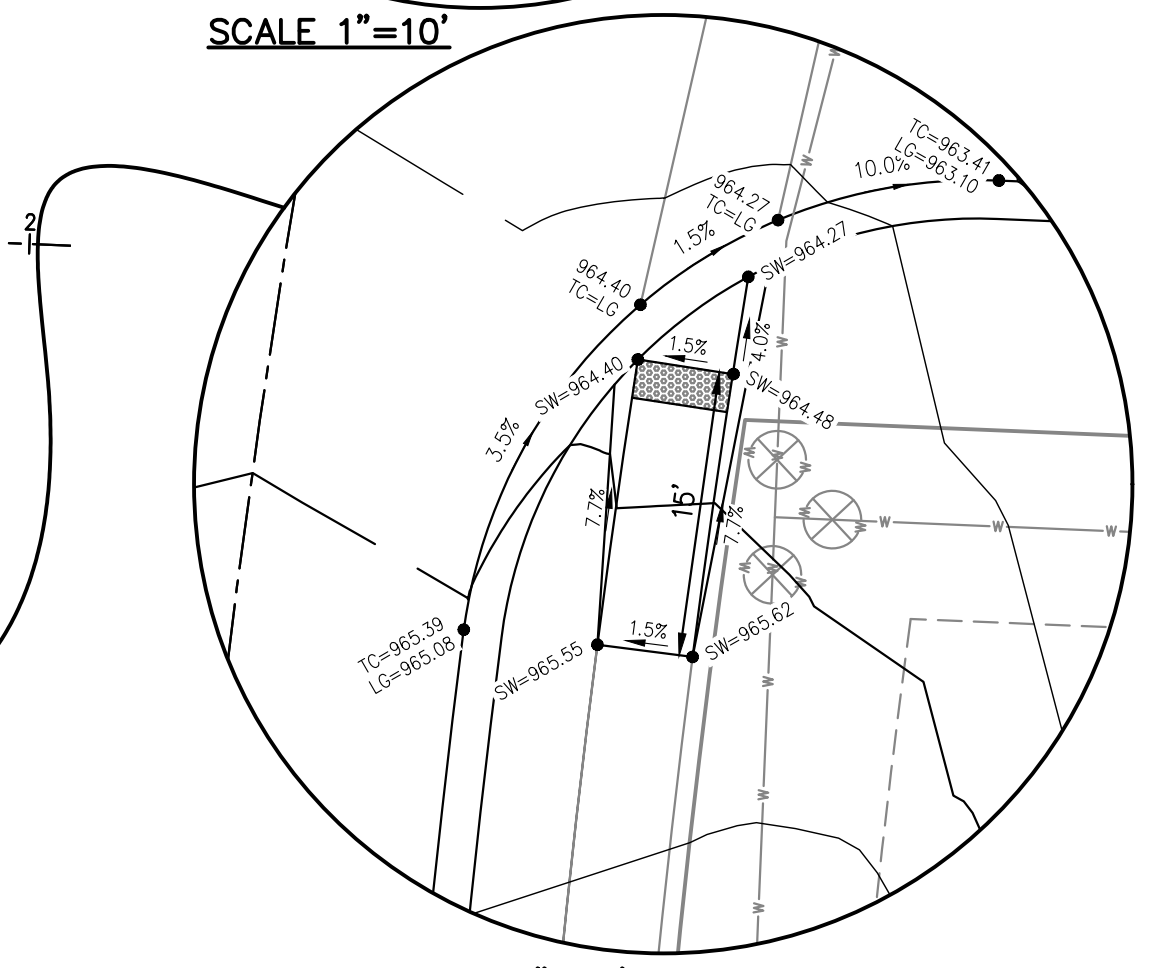
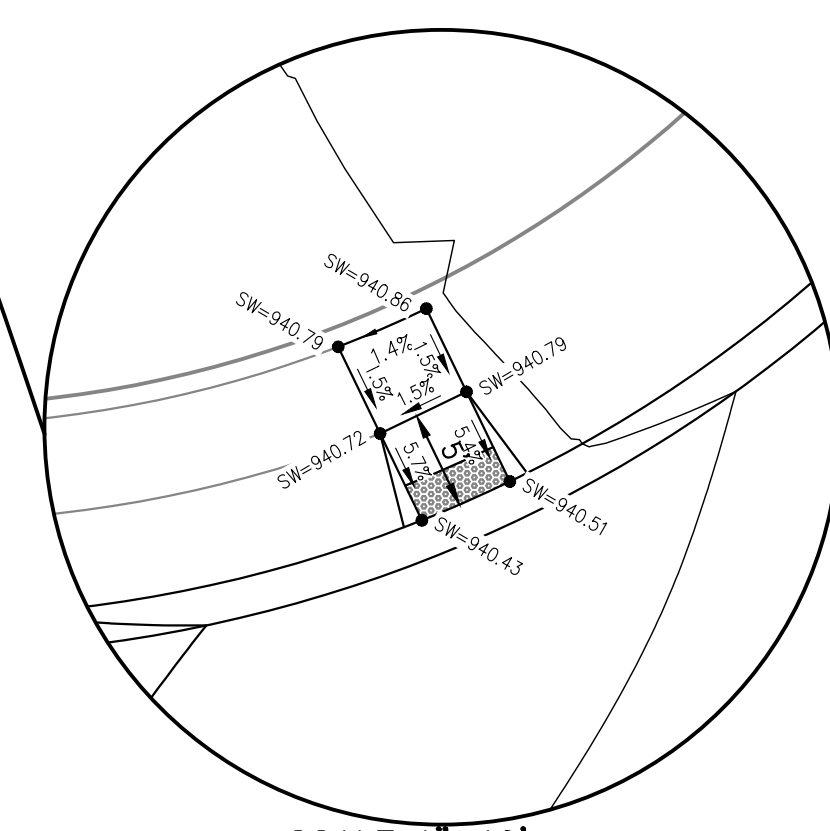
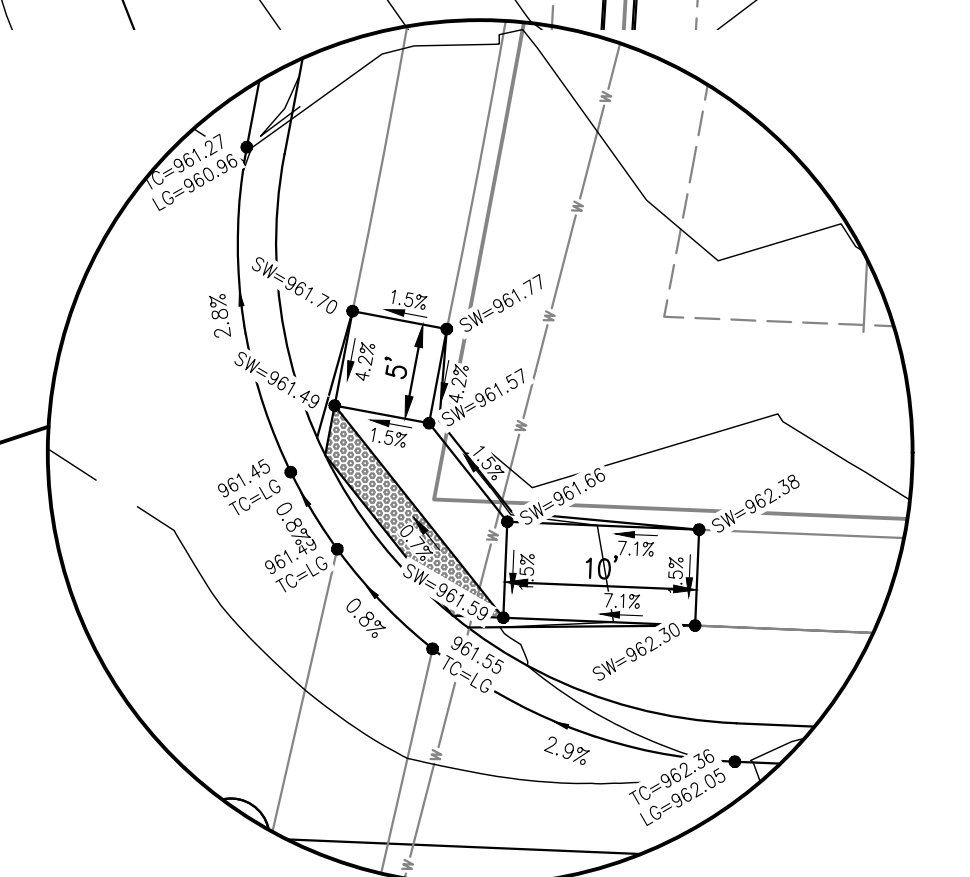
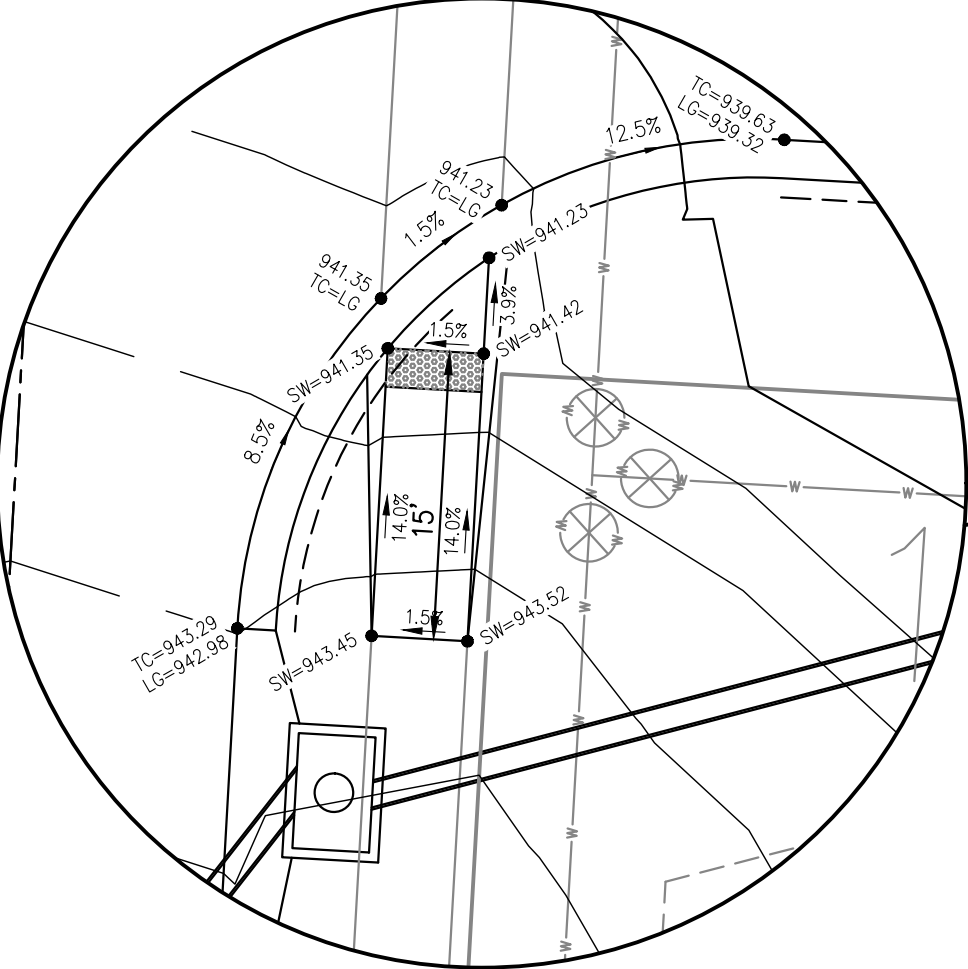
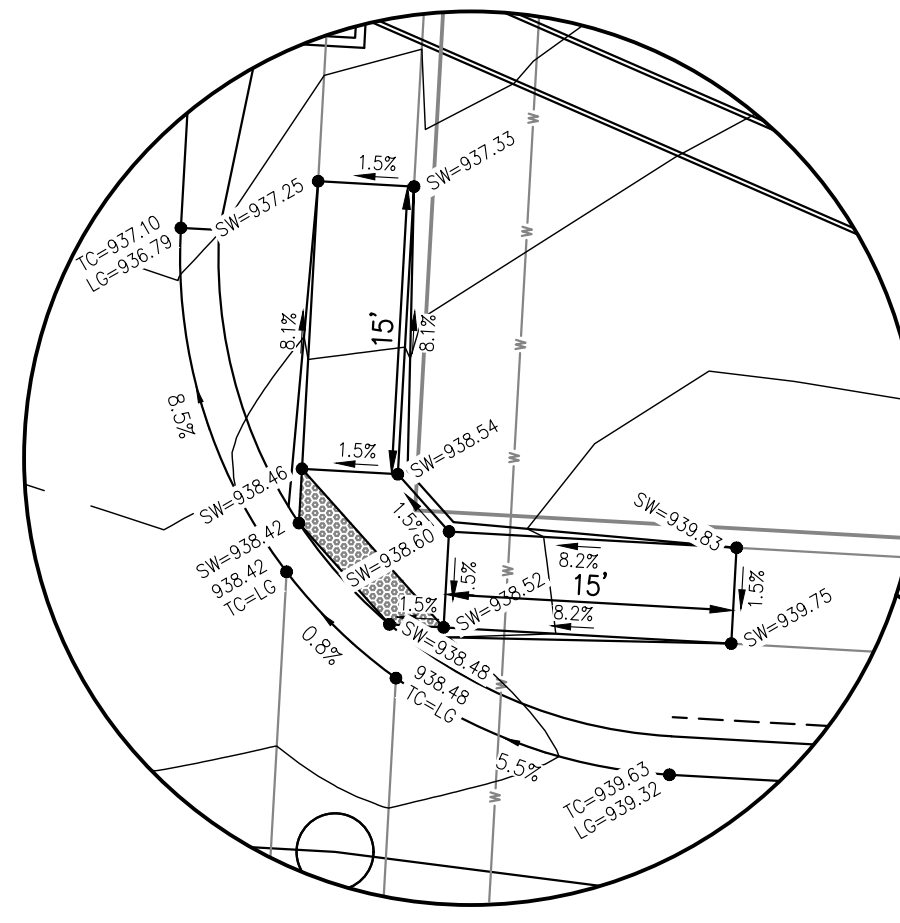
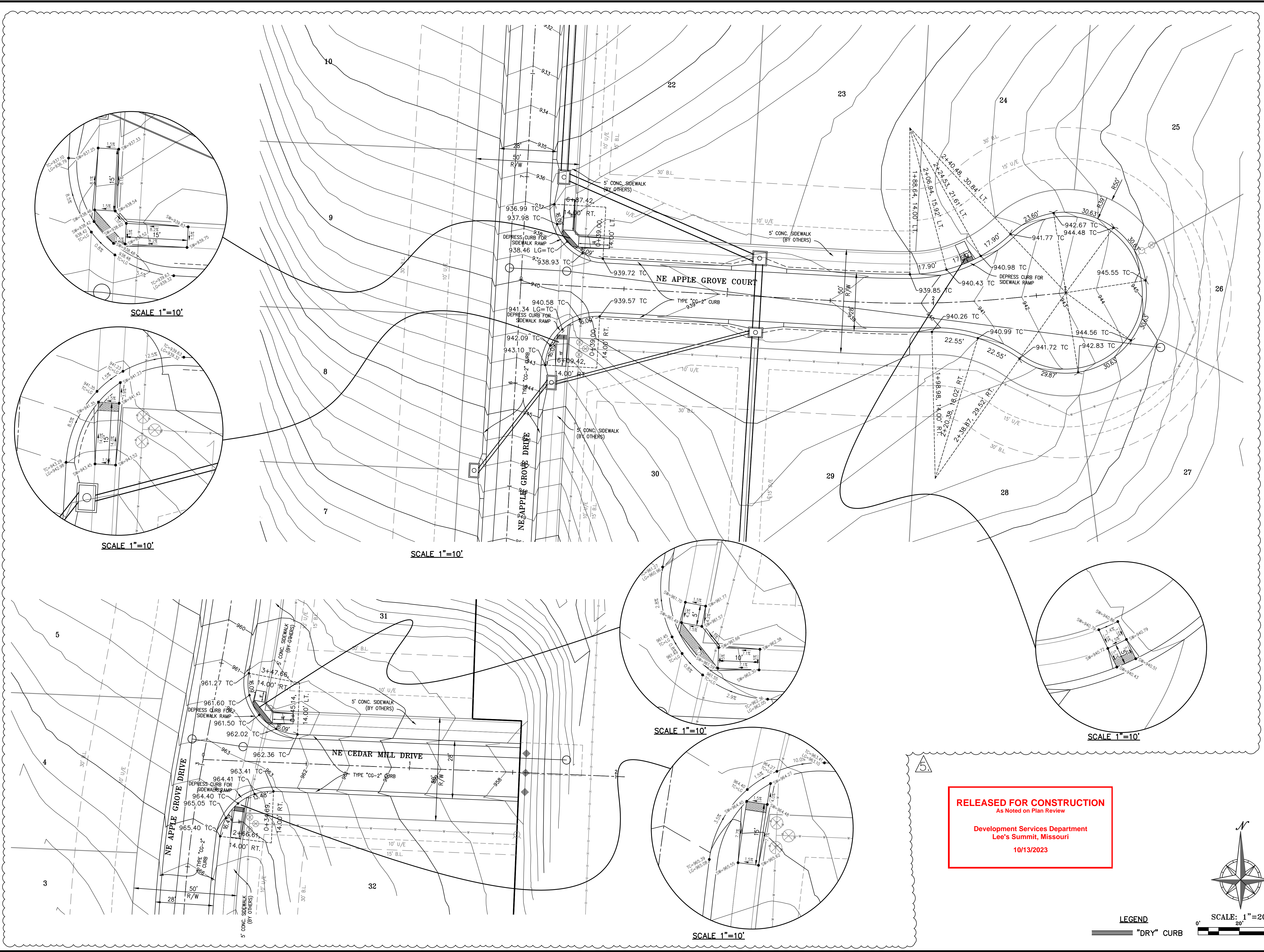
**PHELPS ENGINEERING, INC.**  
 1270 N. Winchester  
 Olathe, Kansas 66066  
 (913) 993-1155  
 Fax (913) 993-1166  
 www.phelpsengineering.com



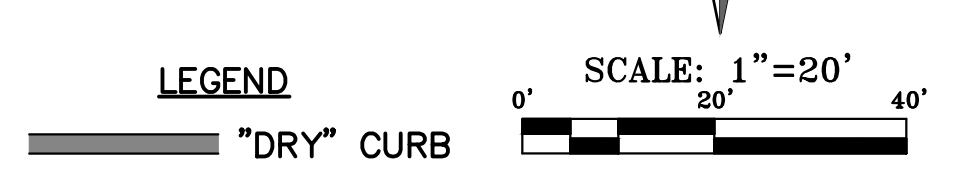
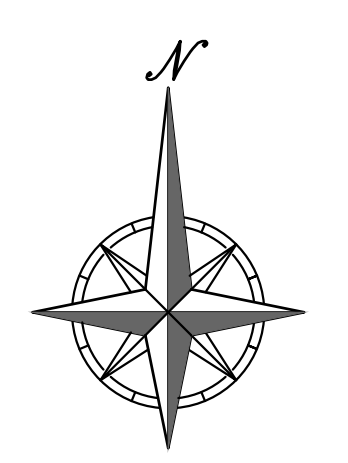
**INTERSECTION DETAILS**  
 ORCHARD WOODS  
 LEE'S SUMMIT, JACKSON COUNTY, MISSOURI

PROJECT NO.	211142	Date	By	App.
DATE: 10-21-2022	DRAWN: BAG	1. 2-27-23	JMO	DEU
CHECKED: DEU	APPROVED: DEU	2. 4-24-23	JMO	DEU
CERTIFICATE OF AUTHORIZATION		3. 6-15-23	BAG	DEU
LAND SURVEYING - LS-82		4. 7-20-23	MRH	DEU
ENGINEERING - E-391		5. 10-11-23	KAD	DEU

\\PHELPS-SERVER\Projects\211142\Drawings\Storm\INTERSECTIONS.dwg Layout2 Oct 11, 2023 3:11pm Kyle Detert



**RELEASED FOR CONSTRUCTION**  
 As Noted on Plan Review  
 Development Services Department  
 Lee's Summit, Missouri  
 10/13/2023



**PHELPS ENGINEERING, INC.**  
 1270 N. Winchester  
 Olathe, Kansas 66066  
 (913) 993-1155  
 Fax (913) 993-1166  
 www.phepsengineering.com

PLANNING  
 ENGINEERING  
 IMPLEMENTATION

**INTERSECTION DETAILS**  
 ORCHARD WOODS  
 LEE'S SUMMIT, JACKSON COUNTY, MISSOURI

PROJECT NO.	DATE	BY	REVISIONS
211142	10-11-23	JMO/DEU	1. REVISED PER CITY COMMENTS
	10-11-23	JMO/DEU	2. REVISED PER CITY COMMENTS
	10-11-23	BAG/DEU	3. REVISED PER CITY COMMENTS
	10-11-23	MRH/DEU	4. REVISED PER CITY COMMENTS
	10-11-23	KAD/DEU	5. REVISED TOP OF CURB ELEVATIONS

