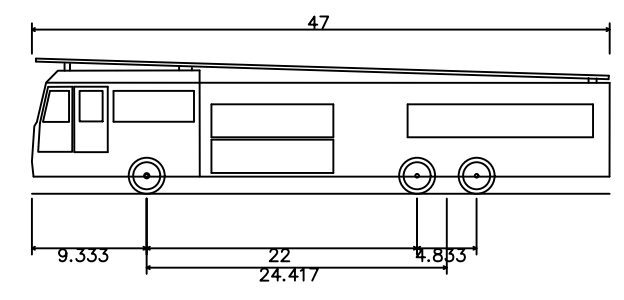
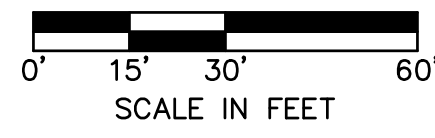
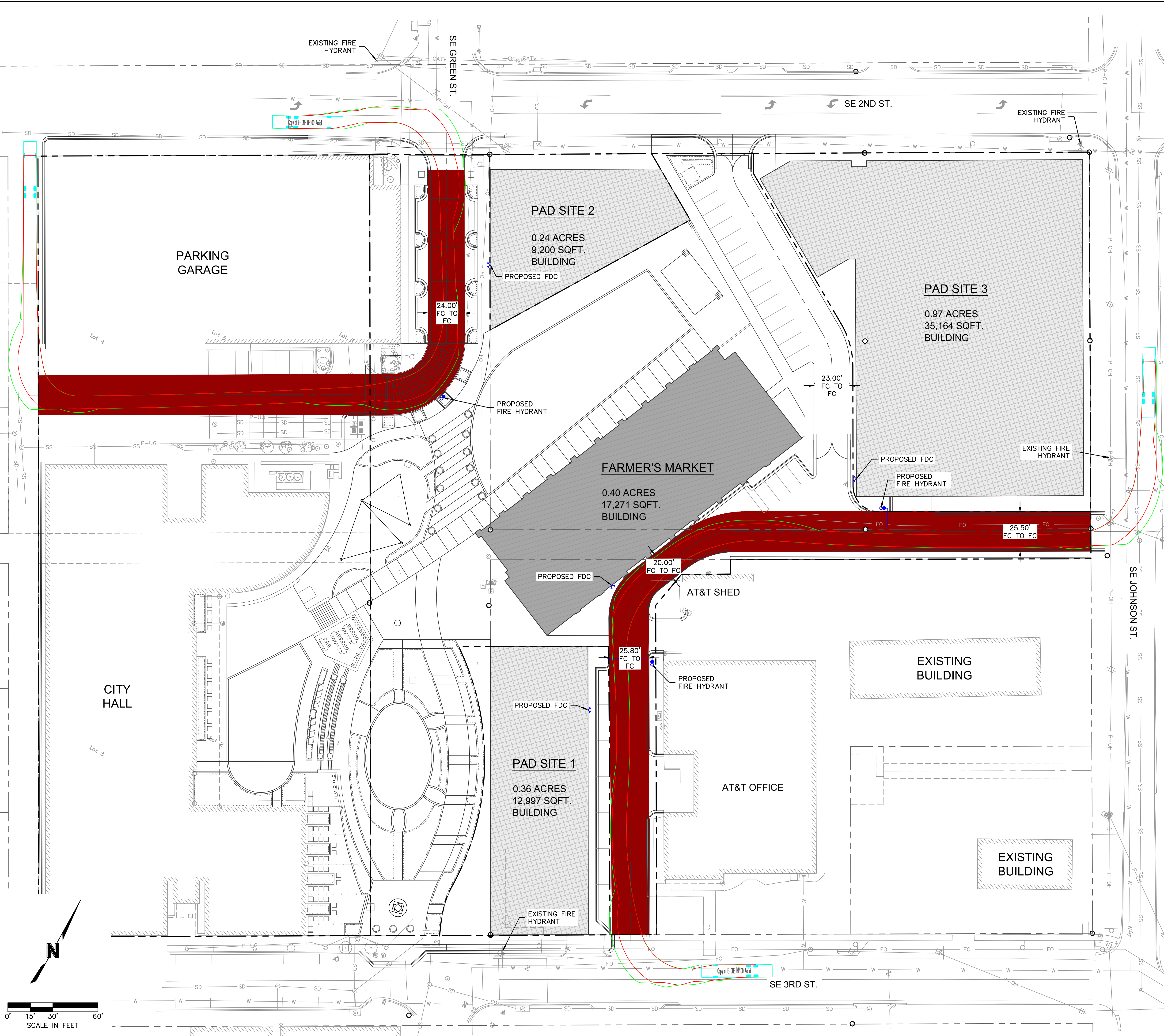


DWG: F:\2022\00001-022-00393\40-Design\AutoCAD\Pre\Drawings\Sheets\PPA\C_TRN01_02200393.dwg USER: dwoodwin C:\PATT_02200393
 DATE: Sep 26, 2023 1:04pm XREFS: C:\BASE_02200393 C:\P_TBLK_02200393 C:\P_UTIL_02200393



Copy of E-ONE HP100 Aerial
 Overall Length 47.000ft
 Overall Width 8.333ft
 Overall Body Height 11.000ft
 Min Body Ground Clearance 1.393ft
 Track Width 6.000ft
 Lock-to-lock time 6.00s
 Max Wheel Angle 45.00°

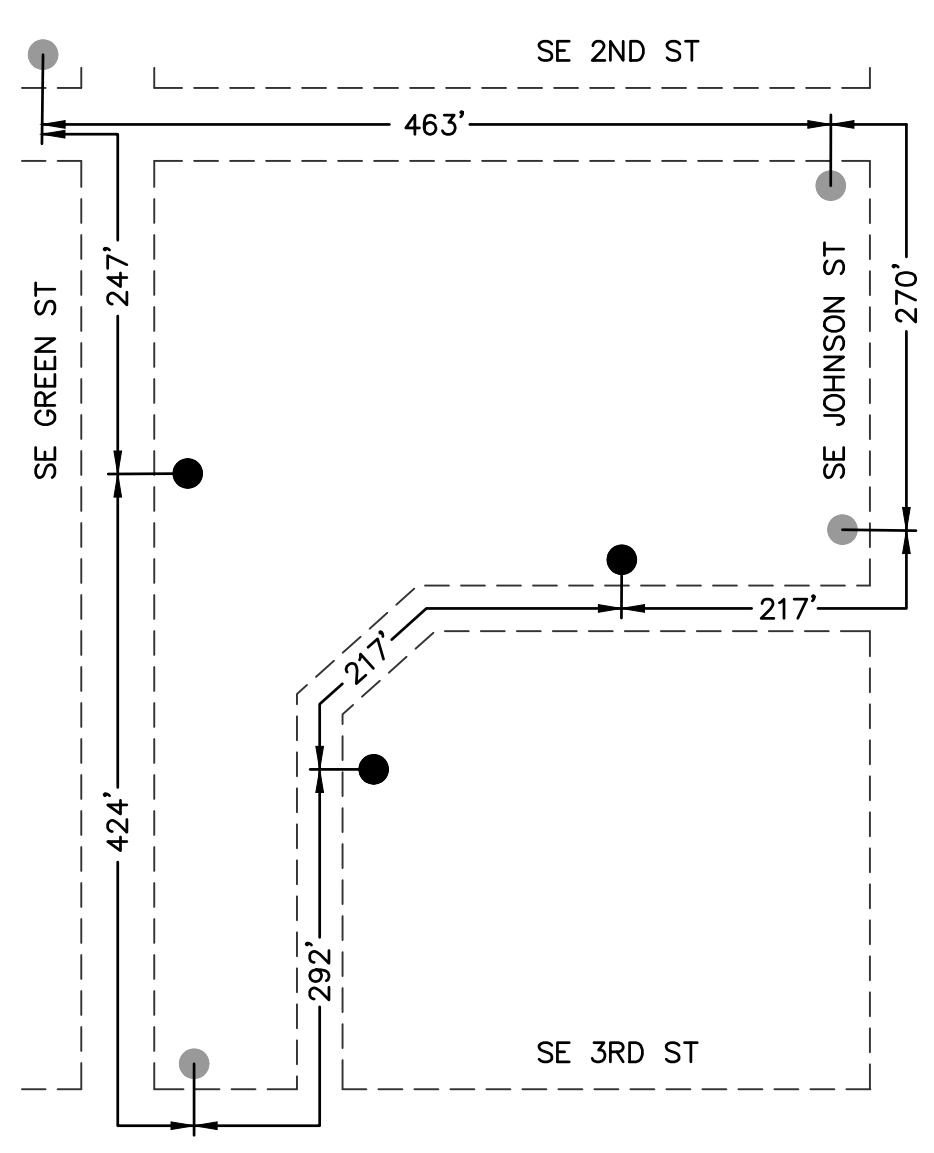
FIRE TRUCK DIMENSIONS
 N.T.S

NOTES

1. VEHICLE TRAVEL PATH SHOWN IS FOR A FIRE TRUCK. SEE DIMENSIONS ABOVE.
2. ALL FIRE APPARATUS ACCESS ROADS SHALL BE DESIGNED AND MAINTAINED TO SUPPORT THE IMPOSED LOADS OF FIRE APPARATUS AND SHALL BE SURFACED SO AS TO PROVIDE ALL-WEATHER DRIVING CAPABILITIES. ALL FIRE APPARATUS DRIVE LANES SHALL BE CAPABLE OF SUPPORTING A 75,000-POUND APPARATUS.
3. WHERE REQUIRED BY THE FIRE CODE OFFICIAL, APPROVED SIGNS OR OTHER APPROVED NOTICES OR MARKINGS THAT INCLUDE THE WORDS NO PARKING--FIRE LANE SHALL BE PROVIDED FOR FIRE APPARATUS ACCESS ROADS TO IDENTIFY SUCH ROADS OR PROHIBIT THE OBSTRUCTION THEREOF. THE MEANS BY WHICH FIRE LANES ARE DESIGNATED SHALL BE MAINTAINED IN A CLEAN AND LEGIBLE CONDITION AT ALL TIMES AND BE REPLACED OR REPAIRED WHEN NECESSARY TO PROVIDE ADEQUATE VISIBILITY. FIRE LANES MAY BE MARKED IN ONE OR A COMBINATION OF METHODS AS APPROVED BY THE FIRE CODE OFFICIAL. CURBS, ALL CURBS AND CURB ENDS SHALL BE PAINTED RED WITH FOUR INCH (4") WHITE LETTERING STATING "FIRE LANE--NO PARKING". WORDING MAY NOT BE SPACED MORE THAN FIFTEEN FEET (15') APART. WHERE NO CURB EXISTS OR A ROLLED CURB IS INSTALLED, A 6-INCH (6") WIDE PAINTED RED STRIPE APPLIED TO THE CONCRETE OR ASPHALT WITH FOUR INCH (4") WHITE LETTERING STATING "FIRE LANE--NO PARKING". SIGNS IN AREA WHERE FIRE LANES ARE REQUIRED, BUT NO CONTINUOUS CURB IS AVAILABLE, ONE OF THE FOLLOWING METHODS SHALL BE USED TO INDICATE THE FIRE LANE. OPTION 1 : A SIGN TWELVE INCHES (12") WIDE AND EIGHTEEN INCHES (18") IN HEIGHT SHALL BE MOUNTED ON A METAL POST SET IN CONCRETE A MINIMUM OF DEPTH OF EIGHTEEN INCHES (18") SET BACK ONE FOOT (1') IN FROM THE EDGE OF THE ROADWAY WITH THE BOTTOM OF THE SIGN BEING SEVEN FEET (7') FROM FINISHED GRADE. SIGNS SHALL FACE ONCOMING TRAFFIC. SPACING OF SIGNS SHALL NOT EXCEED FIFTY FEET (50') BETWEEN SIGNS. SIGNS SHALL BE REFLECTIVE MATERIAL WITH A WHITE COLOR BACKGROUND WITH SYMBOLS, LETTERS AND BORDER IN RED COLOR. "FIRE LANE--NO PARKING". OPTION 2 : A SIGN TWELVE INCHES (12") WIDE AND EIGHTEEN INCHES (18") IN HEIGHT SHALL BE MOUNTED ON THE SIDE OF A STRUCTURE OR OTHER PERMANENT FIXTURE APPROVED BY THE FIRE CODE OFFICIAL. THE BOTTOM OF THE SIGN BEING SEVEN FEET (7') FROM FINISHED GRADE. SPACING OF SIGNS SHALL NOT EXCEED FIFTY FEET (50') BETWEEN SIGNS. SIGNS SHALL BE REFLECTIVE MATERIAL WITH A WHITE COLOR BACKGROUND WITH SYMBOLS, LETTERS AND BORDER IN RED COLOR. "FIRE LANE--NO PARKING"

LEGEND

- PROPOSED PROPERTY BOUNDARIES AND R/W LINES
- EXISTING PROPERTY BOUNDARIES AND R/W LINES
- FIRE TRUCK BODY LIMITS
- FIRE TRUCK WHEEL LIMITS
- █ FIRE TRUCK ACCESSIBLE LANES
- ← X.XX' FC TO FC → DIMENSION FROM FACE OF CURB TO FACE OF CURB
- ▭ PROPOSED BUILDING
- ▭ PROPOSED PAD SITE



FIRE HYDRANT SPACING DIAGRAM
 DIAGRAM SHOWS HYDRANT-TO-HYDRANT SPACING, INCLUDING BOTH EXISTING (LIGHT) AND PROPOSED (DARK) FIRE HYDRANTS, ALONG STREET C/L NOT TO SCALE

olsson

Olsson - Civil Engineering
 Missouri Certificate of Authority #001692
 1301 Burlington Street
 North Kansas City, MO 64116
 TEL 816.361.1177
 www.olsson.com

NOT FOR CONSTRUCTION

REV. NO.	DATE	REVISIONS DESCRIPTION	BY

FIRE TRUCK TURNING PLAN

LEE'S SUMMIT DOWNTOWN MARKET
 GREEN STREET - 2ND STREET TO 3RD STREET

2023

drawn by: DFG

checked by: JIN

approved by: DE

QA/QC by: DE

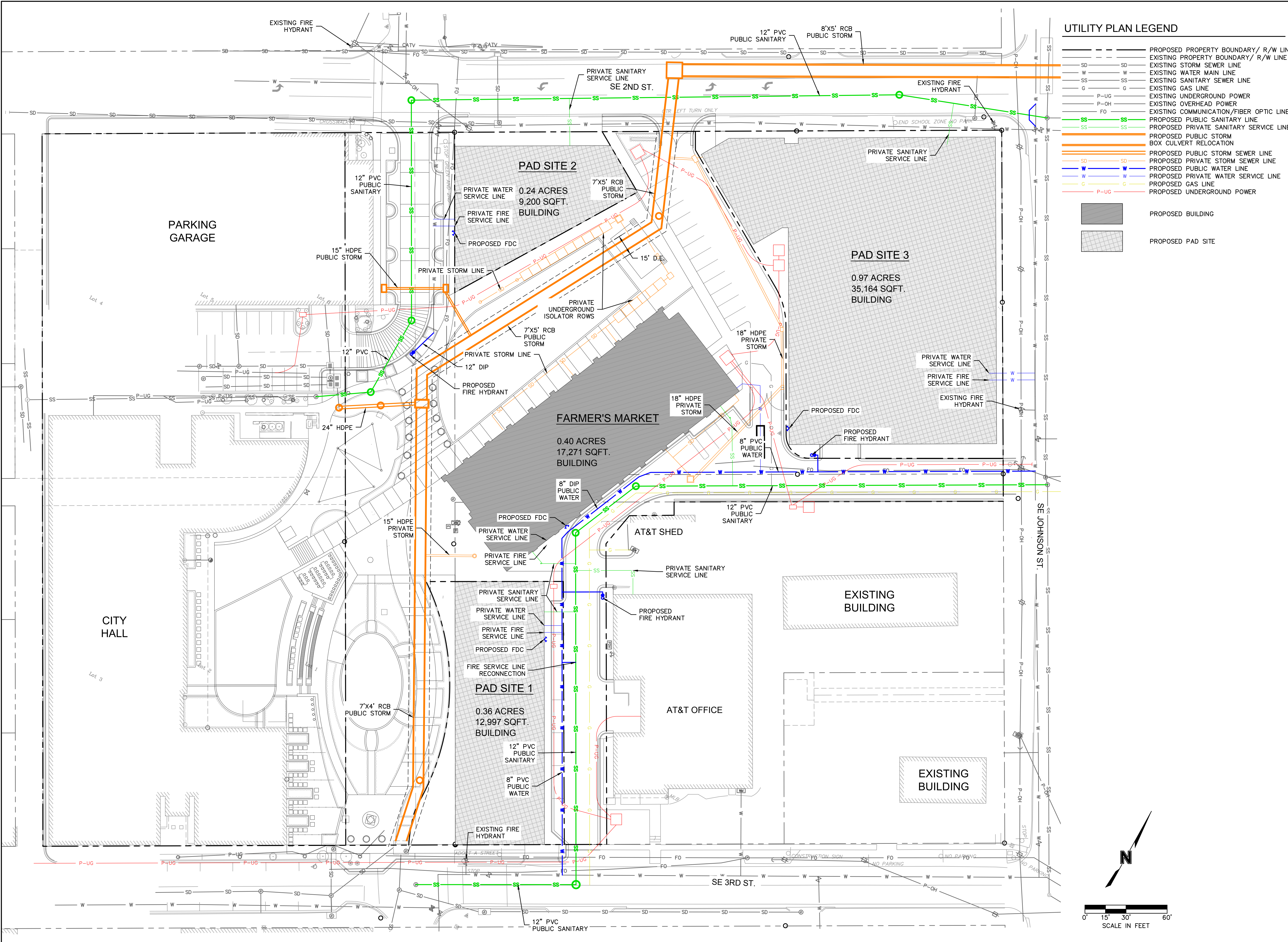
project no.: 022-00393

drawing no.: C_TRN01_02200393

date: 09/27/2023

SHEET
 L105

DWG: F:\2023\00001\022-00393\40-Design\AutoCAD\Pre\Utility Plans\Sheets\GNV\PPA\C_UTL01_02200393.dwg
 DATE: Sep 26, 2023 1:11pm XREFS: C:\P\TBL_02200393 C:\P\TBL_02200393 C:\P\TBL_02200393 C:\P\TBL_02200393 C:\P\TBL_02200393 C:\P\TBL_02200393
 USER: dgoodwin C:\BASE_02200393 C:\BASE_02200393 C:\BASE_02200393 C:\BASE_02200393



UTILITY PLAN LEGEND

---	PROPOSED PROPERTY BOUNDARY/ R/W LINE
---	EXISTING PROPERTY BOUNDARY/ R/W LINE
SD	EXISTING STORM SEWER LINE
W	EXISTING WATER MAIN LINE
SS	EXISTING SANITARY SEWER LINE
G	EXISTING GAS LINE
P-UG	EXISTING UNDERGROUND POWER
P-OH	EXISTING OVERHEAD POWER
FO	EXISTING COMMUNICATION/FIBER OPTIC LINE
SS	PROPOSED PRIVATE SANITARY SERVICE LINE
SS	PROPOSED PUBLIC SANITARY SERVICE LINE
SD	PROPOSED PUBLIC STORM SEWER LINE
SD	PROPOSED PRIVATE STORM SEWER LINE
W	PROPOSED PUBLIC WATER LINE
W	PROPOSED PRIVATE WATER SERVICE LINE
G	PROPOSED GAS LINE
P-UG	PROPOSED UNDERGROUND POWER
[Hatched Box]	PROPOSED BUILDING
[Grid Box]	PROPOSED PAD SITE

olsson
 Olsson - Civil Engineering
 Missouri Certificate of Authority #001692
 1301 Burlington Street
 North Kansas City, MO 64116
 TEL 816.361.1177
 www.ollson.com

NOT FOR CONSTRUCTION

REV. NO.	DATE	REVISIONS DESCRIPTION	BY

UTILITY PLAN

LEE'S SUMMIT DOWNTOWN MARKET
 GREEN STREET - 2ND STREET TO 3RD STREET
 LEE'S SUMMIT, MO

2023

drawn by: DFG
 checked by: JIN
 approved by: DE
 QA/QC by: DE
 project no.: 022-00393
 drawing no.: C_UTL01_02200393
 date: 09.15.2023

SHEET C200