

COWBOY EXPRESS

LEE'S SUMMIT, MO.

ERS 100GPM (GALLON PER MINUTE) RECLAIM SYSTEM TYPICAL 3-PIT LAYOUT

Tank #1 section A is where we send the underflow discharge (dirty water) from the Hydro cyclonic separators which clean the water on the ERS system. This section of the tank allows the dirt to settle to the bottom and oils to float to the top. As section A of tank #1 fills it will slowly flow into section B, which is the section where we send our water from the center trench. By using Tee's on our crossovers we are capable of trapping the floating oils and keeping the majority of them in tank #1.

There is also a crossover from Tank #1 which will fill Tank #2. Tank #2 is our secondary settlement tank. The sewer overflow is located in Tank #2 section B, which when Tank # 2 fills any excess water is sent to the sewer.

Tank #3 has a low crossover from Tank #2, this allows us to fill Tank#3 with water from the middle of Tank#2. The water in tank #3 is then suctioned up into the ERS reclaim system. It filters through a strainer basket to filter any larger debris that may have gotten into the tank. From the basket it is sent to the Hydro cyclones which spin the water at a very high rate of speed allowing the solids to drop down through the cyclone and discharged into Tank #1. The clean water is then sent to the car wash equipment and the process starts over.

We will reclaim/re-use up to 70% of the water.

The ERS 100 reclaim system has a flow rate of 100 gallons per minute

Thanks,

Lee M. Bonin

Sobrite Technologies

309-467-2335



Reclaim System

ERS RECLAIM Easy Reclaim System

- Includes Proven Odor Control
- UL Listed Control Panel
- Easy Retro Fit Applications
- Cost Effective Solutions

SPECIFICATIONS

- Patented SOBRITE® AquaPrep Odor Control Technology
- Stainless Steel Frame
- 120 VAC Powered Control Panel with Hand / Off / Auto Switch and Alarm Light
- TEFC Motor, Self-Priming Pump
- 208-230/460 VAC 3PH 60Hz
- Automatic Fresh Water Over-Ride Solenoid, with Low Water Float Switch and No Flow Alarm
- Hydro-Cyclonic Particle Separators
- 2 Pump Pressure Gauges
- 1 Airflow Meter

DIMENSIONS

- SMALL FOOT PRINT
- 48" Wide x 30" Deep x 66" Tall



SOBRITE®

WATER TREATMENT SOLUTIONS

A leader in water treatment solutions for over 40 years, SOBRITE® uses the latest technology to design and manufacture water reclaim systems, spot-free water units, water softeners, and proven odor control systems.

WHAT SETS SOBRITE® APART:

1. Good Re-Use Water That Does Not Smell
2. Customer Support Before and After Sale
3. Low Annual Maintenance Costs

ERS 100

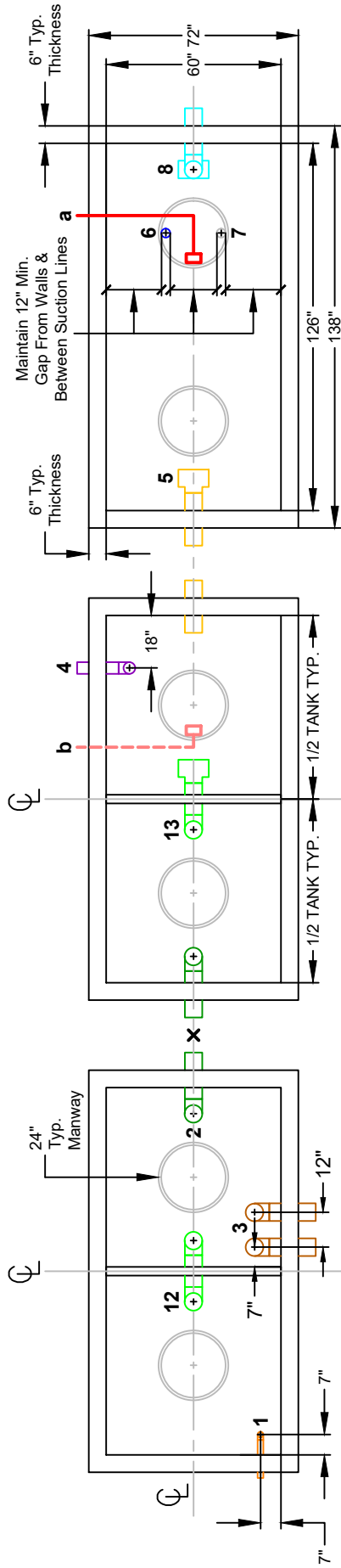
ERS MODELS

ERS-50: 50 GPM
ERS-100: 100 GPM
ERS 150: 150 GPM

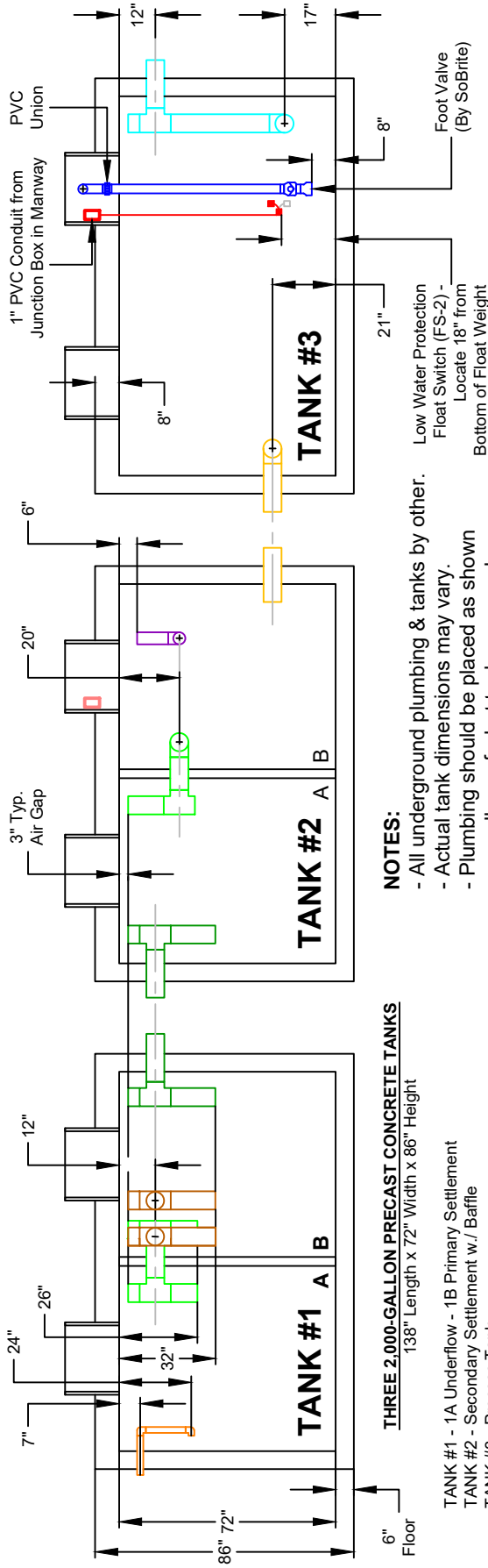


SOBRITE ERS 100 3-TANK LAYOUT

Three 2,000 Gallon Precast Concrete Tanks



TOP VIEW



SIDE VIEW

THREE 2,000-GALLON PRECAST CONCRETE TANKS
138" Length x 72" Width x 86" Height

TANK #1 - 1A Underflow - 1B Primary Settlement
TANK #2 - Secondary Settlement w./ Baffle
TANK #3 - Process Tank

PLUMBING LEGEND

- 1 - 2" sch 80 PVC Pipe - Underflow Discharge - To TANK 1A
- 2 - 6" sch 40 PVC Pipe - External Crossover - From TANK 1B to TANK 2A
- 3 - Two 6" sch 40 PVC Pipes - Center Trench - To TANK 1B
- 4 - 4" or 6" sch 40 PVC Pipe - Overflow to Sewer - From TANK 2B
- 5 - 6" sch 40 PVC Pipe - External Crossover - From TANK 2B to TANK 3
- *6 - 3" sch 80 PVC Pipe - Filter Pump Suction Line - From TANK 3
- *7 - 3" sch 80 PVC Pipe - Optional Extra Suction Line - From TANK 3
- 8 - 4" or 6" sch 40 PVC Pipe - AquaPrep Discharge - To TANK 1B
- 12 - 6" sch 40 PVC Pipe - Internal Crossover - From TANK 1A to TANK 1B
- 13 - 6" sch 40 PVC Pipe - Internal Crossover - From TANK 2A to TANK 2B

*Increase Suction Lines if The Run is over 25' or Elevation is Above 3000'

ELECTRICAL LEGEND

- a - 1" PVC Conduit - Low Water Protection Float Switch (FS-2) - TANK 3
- b - 1" PVC Conduit - FOR FUTURE USE - TANK 2B

NOTES:

- All underground plumbing & tanks by other.
- Actual tank dimensions may vary.
- Plumbing should be placed as shown regardless of what tanks are used.
- All pipes must be set below frost line.
- Suction lines MUST be sch 80 PVC.
- Do NOT install screens on float valve.
- All tank bottoms should be same elevation.
- Consult engineer for elevations.

DRAWING

NOT TO SCALE

VERY IMPORTANT - PLEASE READ CAREFULLY!
This is a Typical Tank Layout. A Job Specific Tank Layout Will Be Created After SoBrite Receives a Tank Cut Sheet From Your Choice of Tank Manufacturer

(If Foot Valve is Raised, The Float Switch Also Needs to be Raised)
Keep a 10" Distance Between Them!



ERS-100 RECLAIM SYSTEM

CONTROL VOLTAGE: 120 VAC 60 Hz 1 Phase 15 amp - Not Switched

SPECIFICATIONS: ERS-100 - 3 Phase

Power - 208-230/460 VAC 60 Hz 3 Phase

Full Load Amperage (fla) - 17.5-15.2/7.6

Motor - 5 HP

Flow Rate - 100 gpm

Fresh Water - 2"

Suction - 3" (4" For Runs Over 25')

Discharge - 2"

OPERATION MODES: HAND - ON 24/7

OFF - OFF

AUTO - ON 5:00AM/OFF 10:00PM

