

FINAL DEVELOPMENT PLANS  
EXISTING CONDITIONS  
OUR LADY OF THE PRESENTATION  
PARKING LOT EXPANSION  
CITY OF LEE'S SUMMIT, JACKSON COUNTY, MISSOURI

X-REF NO.  
23-042 Base

DRAWING NO.  
23-042 FDPs

DATE  
June 30, 2023

JOB NO.  
23-042

SHEET  
2 OF 14

CONSULT INC. ENGINEERS

1533 Locust Street, Kansas City, Missouri 64108  
CORPORATE LICENSE NO. E201000573 (MO.) / E-1736 (KS.) / LS 2019005467

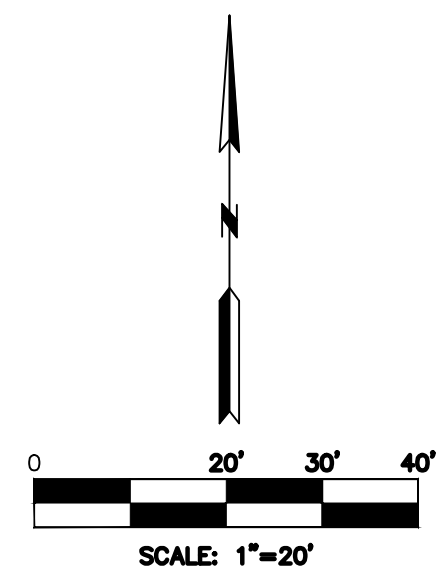
STATE OF MISSOURI  
REGISTERED PROFESSIONAL ENGINEER  
RICHARD K. KERN  
No. 26626  
EXPIRES 12/31/2024

R. KEVIN STERRETT, MO E-26440  
July 28, 2023

DATE	REVISION	NO.	BY	CORP.
07/28/23	PET CITY'S COMMENTS	1	SPW	RKS
06/29/23	SUBMITTED TO CITY OF LEE'S SUMMIT		SPW	RKS

IF THIS IS NOT A BLUE INK SEAL AND THE SIGNATURE IN BLUE INK, THE PLAN IS A COPY AND MAY CONTAIN UNAUTHORIZED ALTERATIONS. THE CERTIFICATION CONTAINED ON THIS DOCUMENT SHALL NOT APPLY TO ANY COPIES





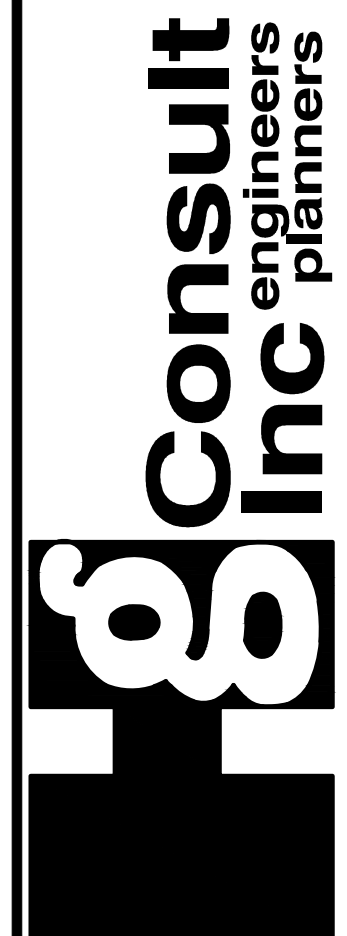
DATE	REVISION	NO.	BY	QUAPP
07/28/23				
08/29/23		1	AKS	AKS
			AKS	AKS

PER CITY'S COMMENTS  
SUBMITTED TO CITY OF LEE'S SUMMIT

IF THIS IS NOT A BLUE INK SEAL AND THE SIGNATURE IN BLUE INK, THE PLAN IS A COPY AND MAY CONTAIN ANY INFORMATION THAT IS NOT A BLUE INK SEAL. THE CERTIFICATION CONTAINED ON THIS DOCUMENT SHALL NOT APPLY TO ANY COPIES.



R. KEVIN STERRETT, MO E-26440  
July 28, 2023

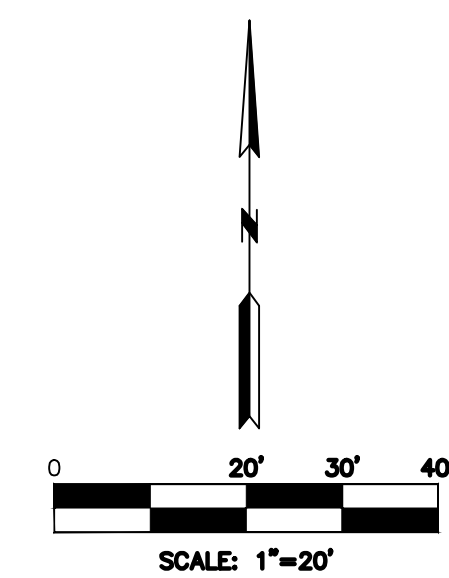


1533 Locust Street, Kansas City, Missouri 64108  
CORPORATE LICENSE No. E201000573 (MO.) / E-1736 (KS.) / LS 2019005467

FINAL DEVELOPMENT PLANS  
SITE DEMOLITION PLAN  
OUR LADY OF THE PRESENTATION  
PARKING LOT EXPANSION  
CITY OF LEE'S SUMMIT, JACKSON COUNTY, MISSOURI

X-REF NO.	
23-042 Base	
DRAWING NO.	
23-042 FDPs	
DATE	
June 30, 2023	
JOB NO.	
23-042	
3	SHEET OF 14

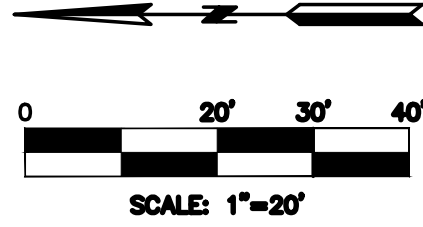
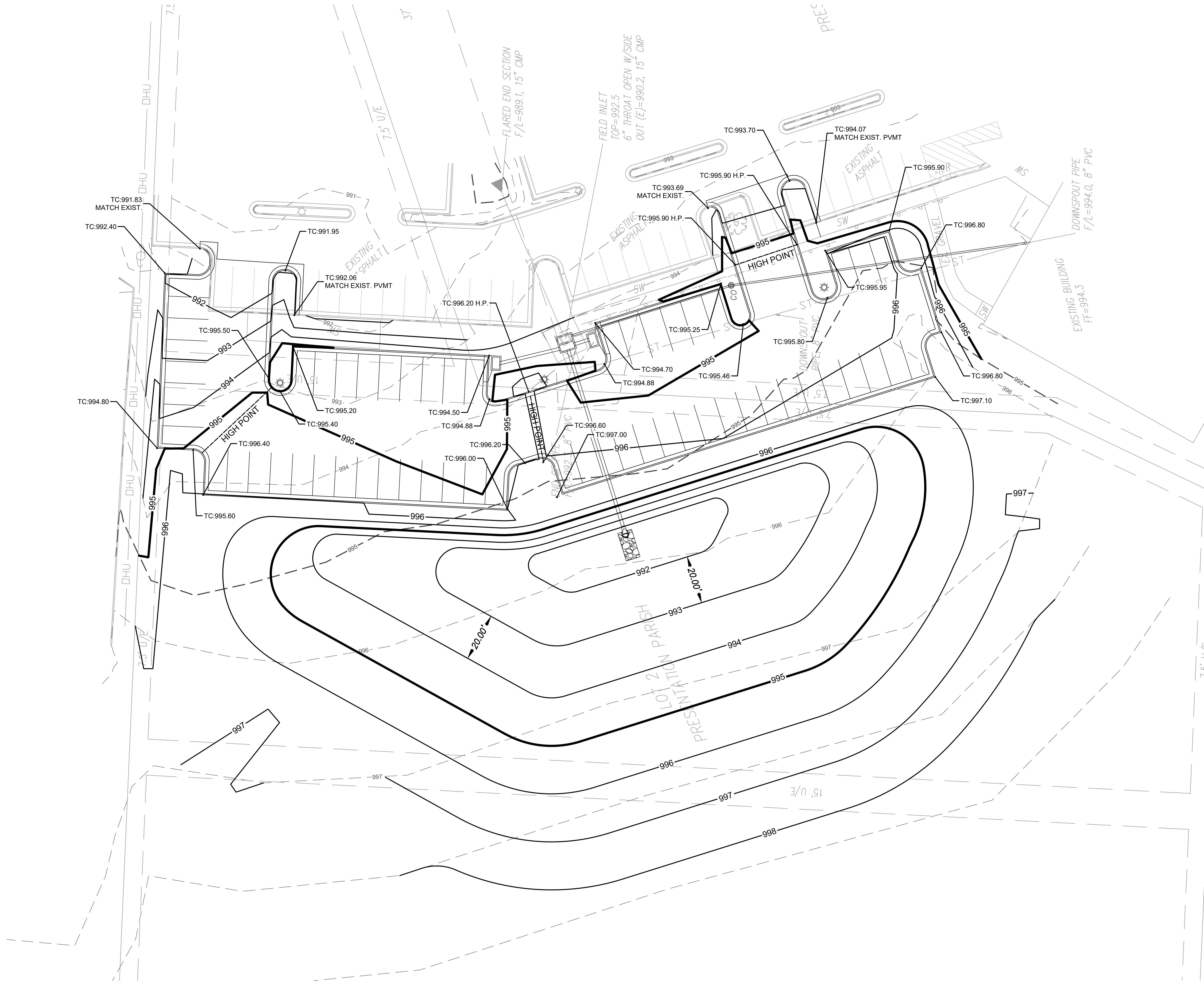




DATE	REVISION	NO.	BY	CHAPP
07/28/23	PER CITY'S COMMENTS	1	SPW	RCS
06/29/23	SUBMITTED TO CITY OF LEE'S SUMMIT		SPW	RCS

THIS IS NOT A BLUE INK SEAL AND THE SIGNATURE IN BLUE INK. THE PLAN IS A COPY AND MAY CONTAIN UNAUTHORIZED ALTERATIONS. THE CERTIFICATION CONTAINED ON THIS DOCUMENT SHALL NOT APPLY TO ANY COPIES





**LEGEND**

TC = Top of Curb  
 SW = Edge of Sidewalk  
 H.P. = High Point  
 L.P. = Low Point

FINAL DEVELOPMENT PLANS  
**SITE GRADING PLAN**  
 OUR LADY OF THE PRESENTATION  
 PARKING LOT EXPANSION  
 CITY OF LEE'S SUMMIT, JACKSON COUNTY, MISSOURI

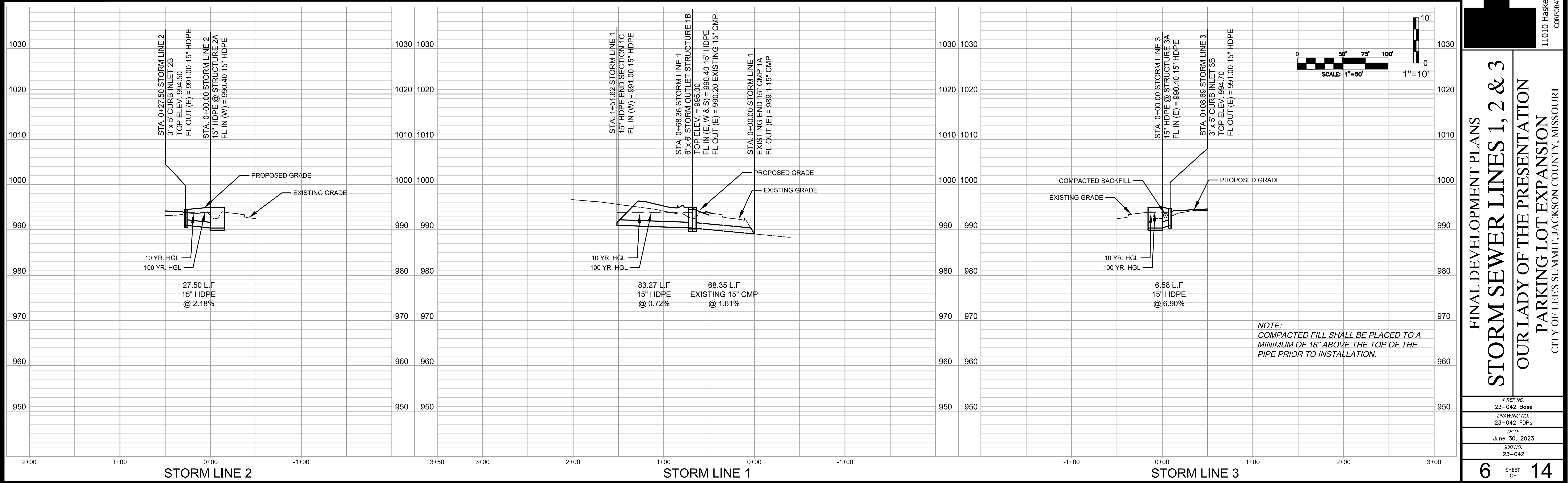
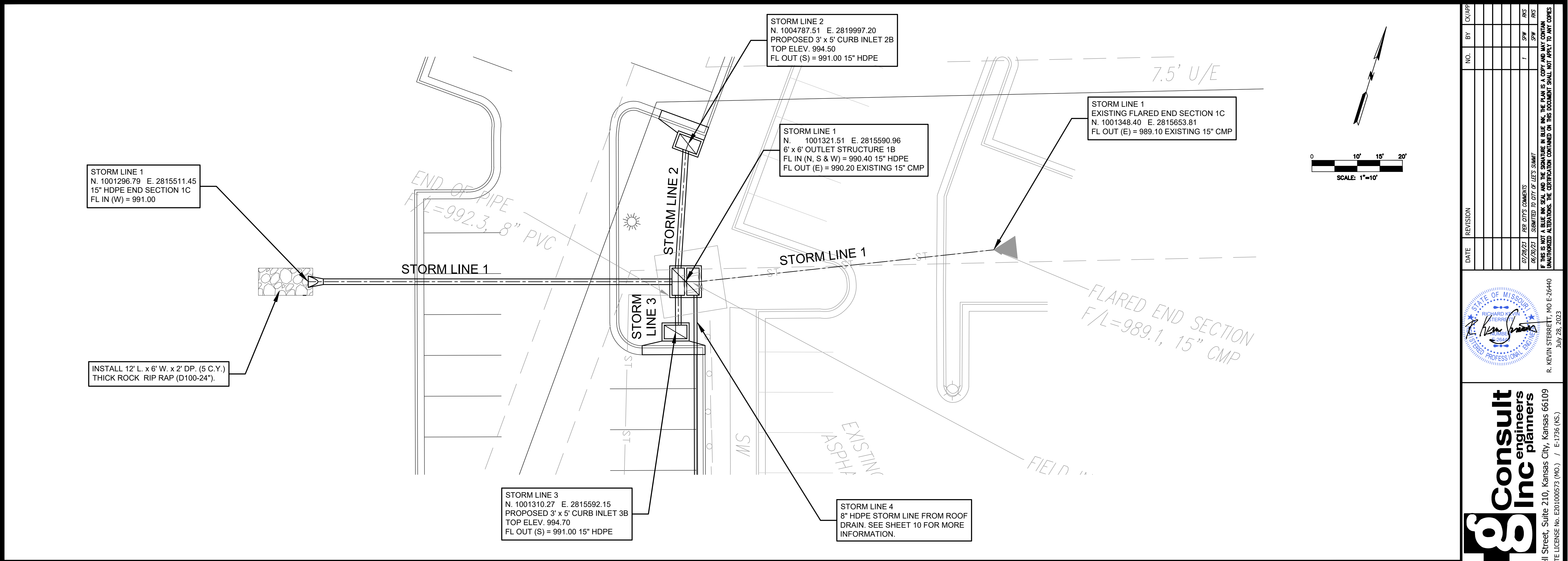
**gconsult inc** engineers planners  
 1533 Locust Street, Kansas City, Missouri 64108  
 CORPORATE LICENSE NO. E201000573 (MO.) / E-1736 (KS.) / LS 2019005467



DATE	REVISION	NO.	BY	CORRE
07/28/23	PER CITY'S COMMENTS			
08/29/23	SUBMITTED TO CITY OF LEE'S SUMMIT	1	SPW	ARS
			SPW	ARS

IF THIS IS NOT A BLUE INK SEAL AND THE SIGNATURE IN BLUE INK, THE PLAN IS A COPY AND MAY CONTAIN UNAUTHORIZED ALTERATIONS. THE CERTIFICATION CONTAINED ON THIS DOCUMENT SHALL NOT APPLY TO ANY COPIES





NO.	BY	CHK/APP.	DATE	REVISION
1	SPW	SPW	07/28/23	PER CITY'S COMMENTS
2	SPW	SPW	08/20/23	SUBMITTED TO CITY OF LEE'S SUMMIT

IF THIS IS NOT A BLUE INK SEAL AND THE SIGNATURE IN BLUE INK, THE PLAN IS A COPY AND MAY CONTAIN UNAUTHORIZED ALTERATIONS. THE CERTIFICATION CONTAINED ON THIS DOCUMENT SHALL NOT APPLY TO ANY COPIES.

R. KEVIN STERRETT, MO E-26440  
July 28, 2023

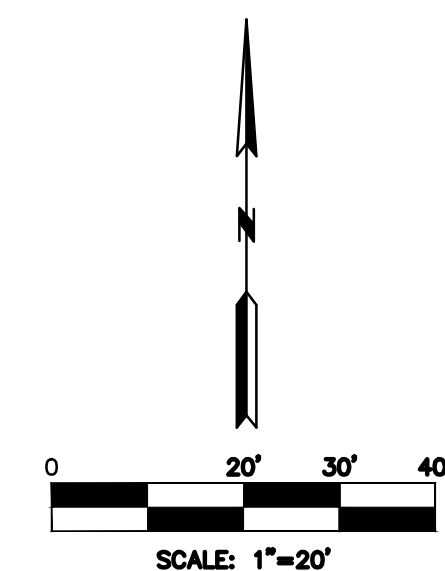
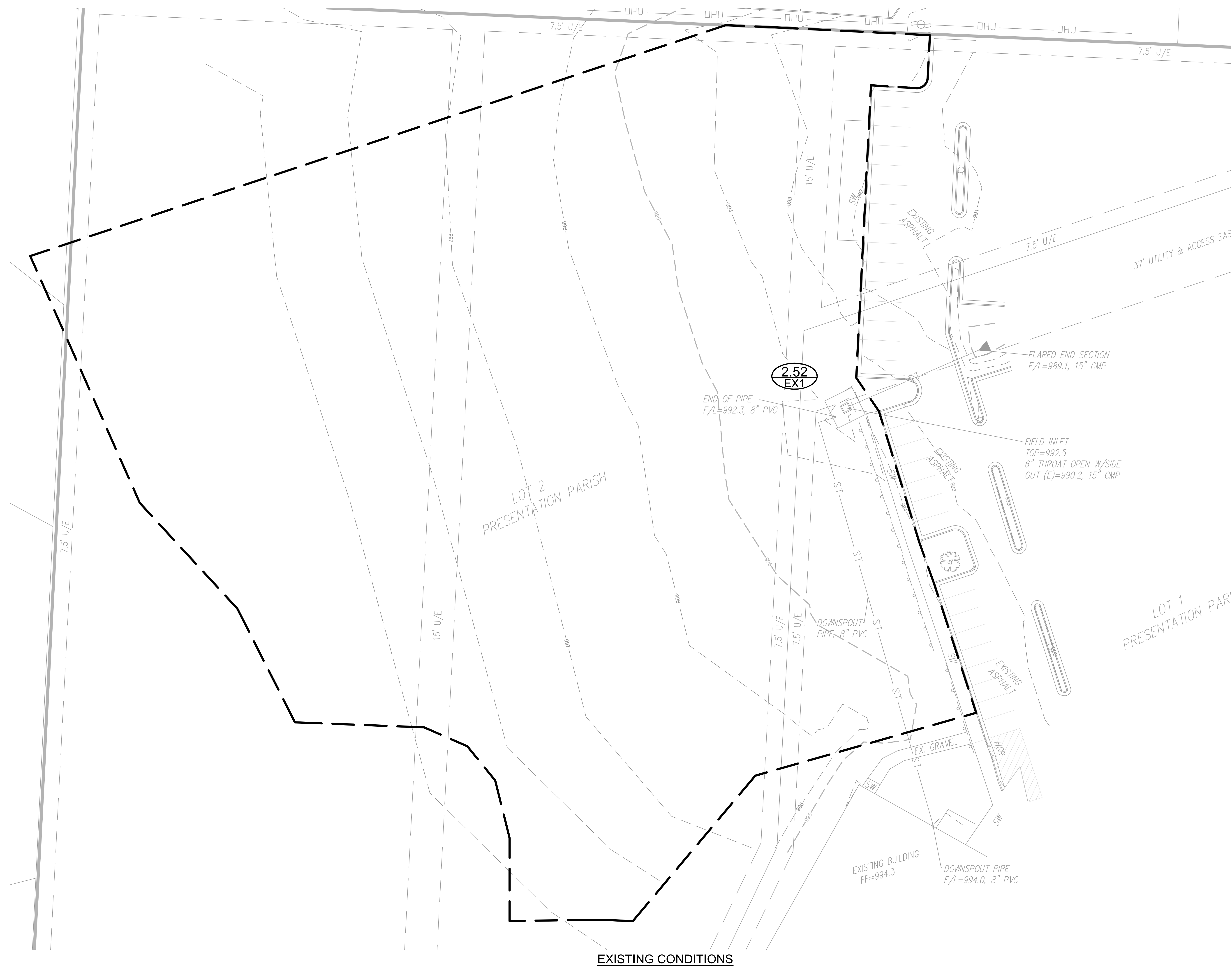
**gconsult inc** engineers planners  
11010 Haskell Street, Suite 210, Kansas City, Kansas 66109  
CORPORATE LICENSE No. E20100573 (MO.) / E-1736 (KS.)

FINAL DEVELOPMENT PLANS  
**STORM SEWER LINES 1, 2 & 3**  
OUR LADY OF THE PRESENTATION  
PARKING LOT EXPANSION  
CITY OF LEE'S SUMMIT, JACKSON COUNTY, MISSOURI

X-REF. NO.  
23-042 Base  
DRAWING NO.  
23-042 FDPs  
DATE  
June 30, 2023  
JOB NO.  
23-042

6 SHEET OF 14



[illegible]

R. KEVIN STERRETT, MO E-26440  
July 28, 2023

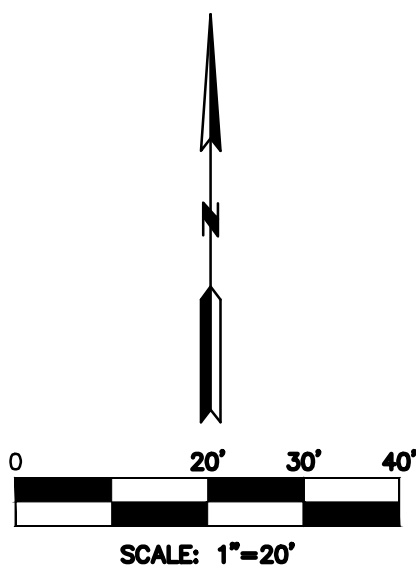


1533 Locust Street, Kansas City, Missouri 64108  
CORPORATE LICENSE NO. E201000573 (MO.) / E-1736 (KS.) / LS 2019005467

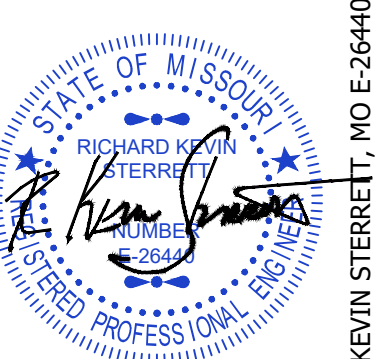
FINAL DEVELOPMENT PLANS  
EC - DRAINAGE AREA MAP  
OUR LADY OF THE PRESENTATION  
PARKING LOT EXPANSION  
CITY OF LEE'S SUMMIT, JACKSON COUNTY, MISSOURI

X-REF NO.	
23-042 Base	
DRAWING NO.	
23-042 FDPs	
DATE	
June 30, 2023	
JOB NO.	
23-042	
7	14
SHEET OF	





DATE	REVISION	NO.	BY	CHANGED
07/26/23	PER CITY'S COMMENTS	1	SPW	RKS
06/29/23	SUBMITTED TO CITY OF LEE'S SUMMIT		SPW	RKS



R. KEVIN STERRETT, MO E-26440  
July 28, 2023

**g** **Consult Inc**  
engineers planners  
1533 Locust Street, Kansas City, Missouri 64108  
CORPORATE LICENSE NO. E201000573 (MO.) / LS 2013005467

FINAL DEVELOPMENT PLANS  
**PC - DRAINAGE AREA MAP**  
OUR LADY OF THE PRESENTATION  
PARKING LOT EXPANSION  
CITY OF LEE'S SUMMIT, JACKSON COUNTY, MISSOURI

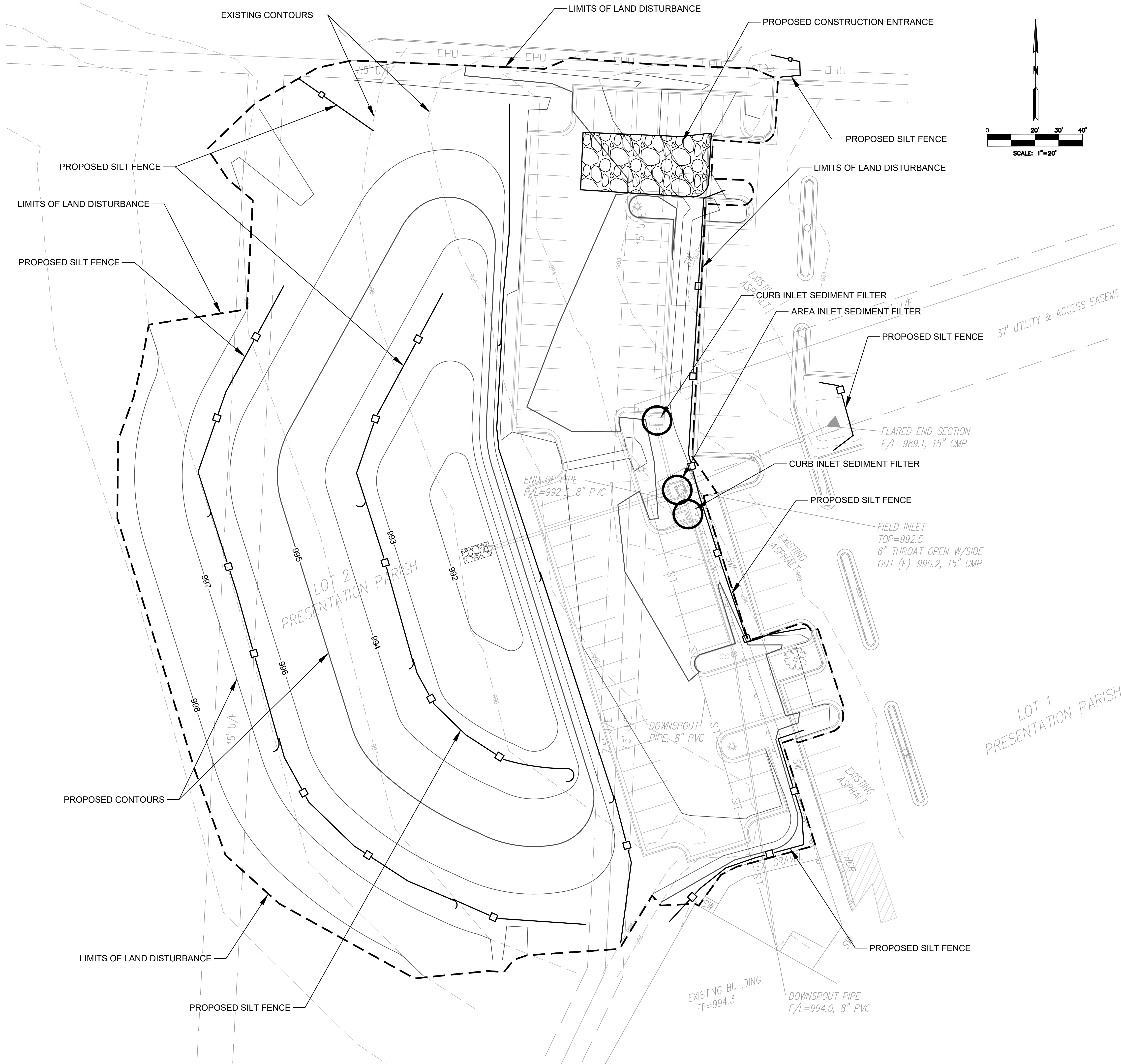
X-REF NO.  
23-042 Base

DRAWING NO.  
23-042 FDPs

DATE  
June 30, 2023

JOB NO.  
23-042





- EROSION CONTROL GENERAL NOTES
1. The contractor shall inspect, repair and add stone to the stone construction entrance when it becomes saturated with mud to insure it functions as it was intended.

2. The topsoil stockpile shall be graded to drain and seeded with a temporary seed mix.

3. All erosion and sediment control devices shall be inspected, cleaned/repared in accordance with the Storm Water Pollution Prevention Plan.

4. Temporary sediment control measures (silt fence, construction entrance, etc.) shall be maintained until all contributing areas are graded and stabilized.

5. A complete plan for maintenance of control devices is contained within the Storm Water Pollution Prevention Plan which is part of the site work specifications.

6. Dust control on site shall be minimized by spraying water on dry areas of the site, the use of oils and other petroleum based or toxic liquids for dust suppression is strictly prohibited.

7. If the majority of mud or dirt is not removed from exiting traffic, contractor shall establish vehicle wash areas at construction traffic exit points and vehicle operation shall be intercepted and trapped before wash water is allowed to be discharged offsite. Rinse-off will not be allowed outside the project construction limits.

8. Repair eroded areas immediately, reseed as necessary to maintain good vegetative cover, mow vegetative cover to maintain a maximum height of six inches, and remove trash as needed.

9. Inspect and repair the collection system (i.e. catch basins, piping, swales, rip rap, etc.) after significant rainfall to maintain proper functioning.

10. All existing structures, fencing, trees, etc., within the construction area shall be removed and disposed of off site per state and local ordinances. any burning on site shall be subject to local ordinances.

11. All wash water (concrete truck, vehicle cleaning, equipment cleaning, etc.) shall be disposed of in a manner that prevents contact between these materials and storm water that is discharged from the site.

12. All materials spilled, dropped, washed, or tracked from vehicles onto roadways or into storm drains must be removed immediately.

13. Contractor shall remove all temporary erosion control devices/ditches and dispose of per local codes once the site has been stabilized. Contractor shall refer to the grading plan for final grades.

14. Land disturbing activities shall not commence until approval to do so has been received by governing authorities.

15. The general contractor shall strictly adhere to the SWPPP during construction operations.

16. No land clearing or grading shall begin until all erosion control measures have been installed.

17. All exposed areas shall be seeded as specified within 14 days of final grading. Should construction stop for longer than 14 days, the site shall be seeded as specified.

18. After every significant runoff producing rainfall event of 1/2" or greater and at least once a week, check and clear the outfall device of any obstructions.

19. This plan shall not be considered all inclusive as the general contractor shall take all necessary precautions to prevent soil sediment from leaving the site.

20. General Contractor shall comply with all State and Local ordinances that apply.

21. Additional erosion and sediment control measures will be installed if deemed necessary by on site inspection.

22. If installation of storm drainage system should be interrupted by weather or nightfall, the pipe ends shall be covered with filter fabric.

23. General Contractor shall be responsible to take whatever means necessary to establish permanent soil stabilization.

24. Additional erosion and siltation control methods and devices may be required as directed by the City or MoDNR.

- LEGEND
- LIMITS OF LAND DISTURBANCE

—□—

SILT FENCE (APWA ESC-03)

○

CURB INLET SEDIMENT FILTER (APWA ESC-06)  
FOR EXISTING INLETS OR INSTALL AS SOON AS  
INLET IS CONSTRUCTED

CONSTRUCTION ENTRANCE AND CONCRETE  
WASHOUT (APWA ESC-01)

TOTAL LAND DISTURBANCE = 1.96 ACRES

EROSION CONTROL PHASING

- PHASE 1: (PRE-CLEARING AND PRE-GRADING)  
INSTALL PERIMETER CONTAINMENT, CONSTRUCTION ENTRANCE  
AND STRUCTURE PROTECTION ON EXISTING AND STRUCTURE  
PROTECTION ON STRUCTURES DOWN STREAM OF DISTURBED  
AREAS.
- PHASE 2:  
INSTALL INLET PROTECTION ON NEW STRUCTURES AS INSTALLED  
AND PRIOR TO PAVING.
- PHASE 3:  
INSTALL SILT FENCE DOWNSTREAM OF PARKING AND BUILDING  
UNTIL REVEGETATION OF SAID LOT.
- PHASE 4:  
UPON REVEGETATION OF LOT, REMOVE ALL EROSION CONTROL  
MEASURES.

NO.	BY	DATE	REVISION	CORR.
1	SW	07/28/23		
	R/S	08/09/23		

SUBMITTED TO CITY OF LEE'S SUMMIT

PER CITY'S COMMENTS

THIS IS NOT A BLUE INK SEAL AND THE SIGNATURE IN BLUE INK, THE PLAN IS A COPY AND MAY CONTAIN UNAUTHORIZED ALTERATIONS. THE CERTIFICATION CONTAINED ON THIS DOCUMENT SHALL NOT APPLY TO ANY COPIES



gconsult inc

engineers planners

1533 Locust Street, Kansas City, Missouri 64108  
CORPORATE LICENSE NO. E201000573 (MO.) / E-1736 (KS.) / LS 2019005467

FINAL DEVELOPMENT PLANS

EROSION CONTROL PLAN

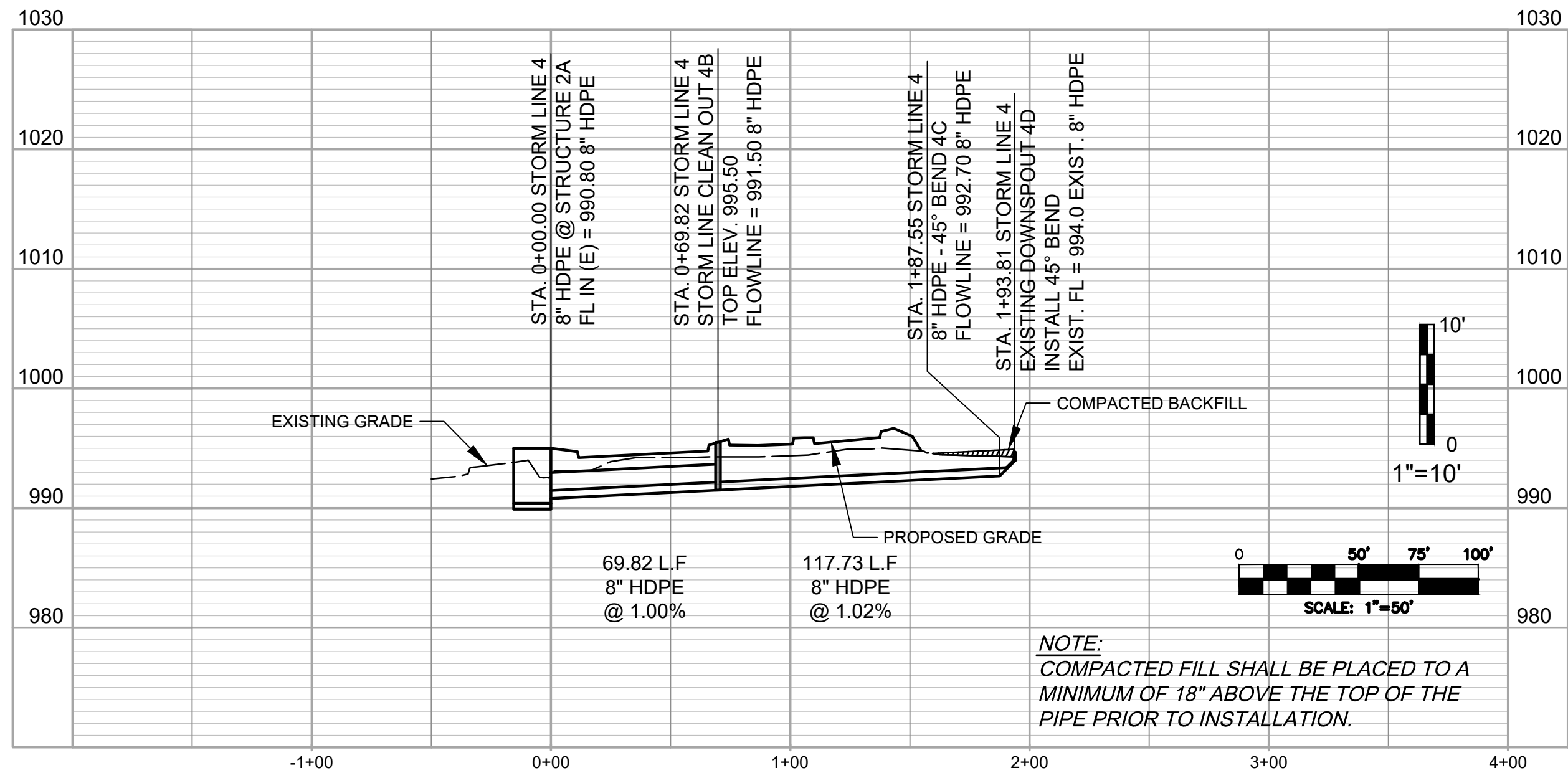
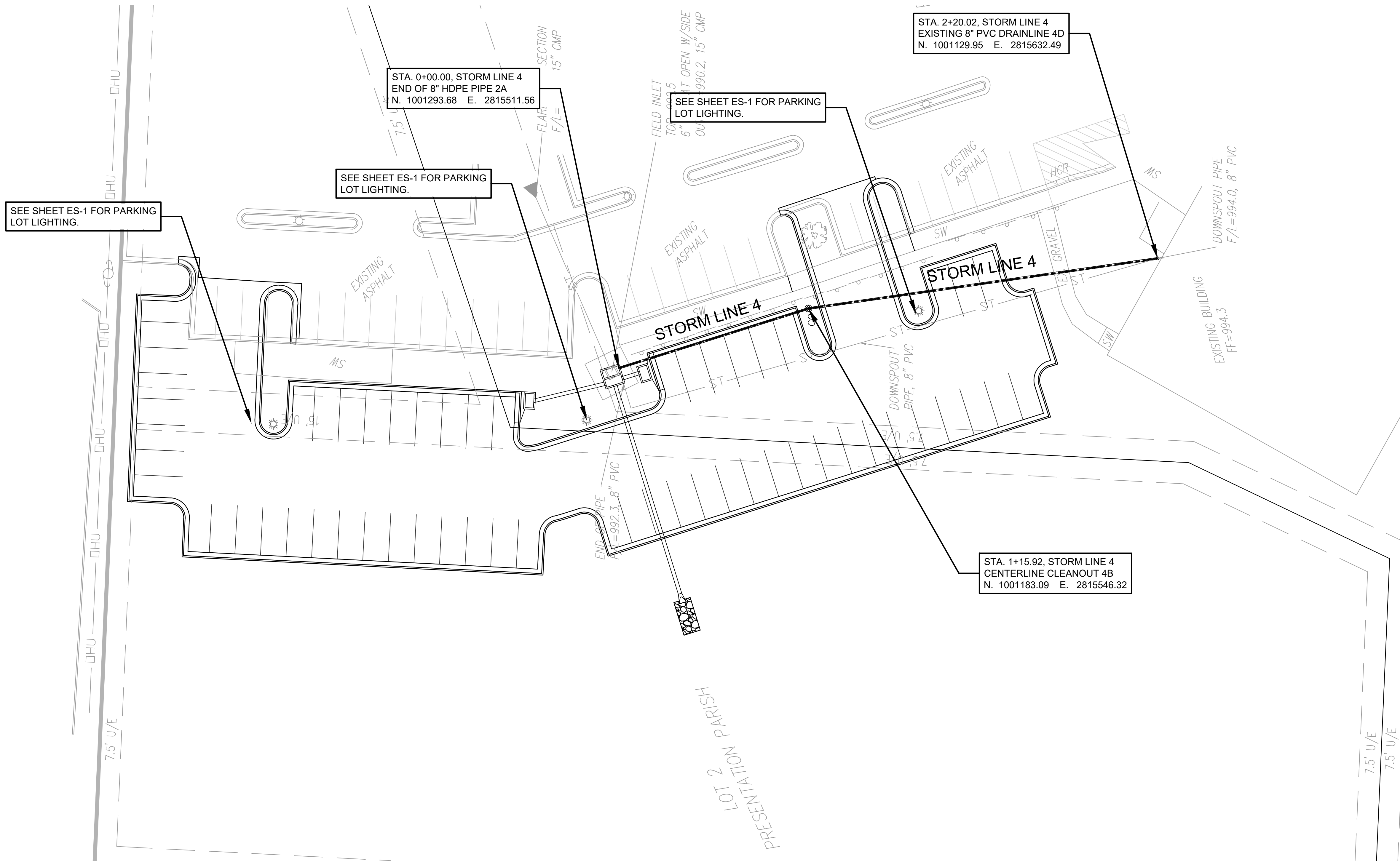
OUR LADY OF THE PRESENTATION

PARKING LOT EXPANSION

CITY OF LEE'S SUMMIT, JACKSON COUNTY, MISSOURI

X-REF NO. 23-042 Base
DRAWING NO. 23-042 FDPs
DATE June 30, 2023
JOB NO. 23-042
9 SHEET OF 14





- GENERAL UTILITY NOTES:
- All utility installation to be in accordance to Lee's Summit "DESIGN AND CONSTRUCTION MANUAL" per Ordinance 5813. See manual for specifications and standard details.
  - Storm pipe to be HDPE, corrugated with smooth interior.
  - Contractor to verify all invert elevations for existing sewer connections. Contact civil engineer if conflict arises.
  - Sewer lines to be trenched and backfilled per City of Lee's Summit.

FINAL DEVELOPMENT PLANS  
SITE UTILITY PLAN  
OUR LADY OF THE PRESENTATION  
PARKING LOT EXPANSION  
CITY OF LEE'S SUMMIT, JACKSON COUNTY, MISSOURI

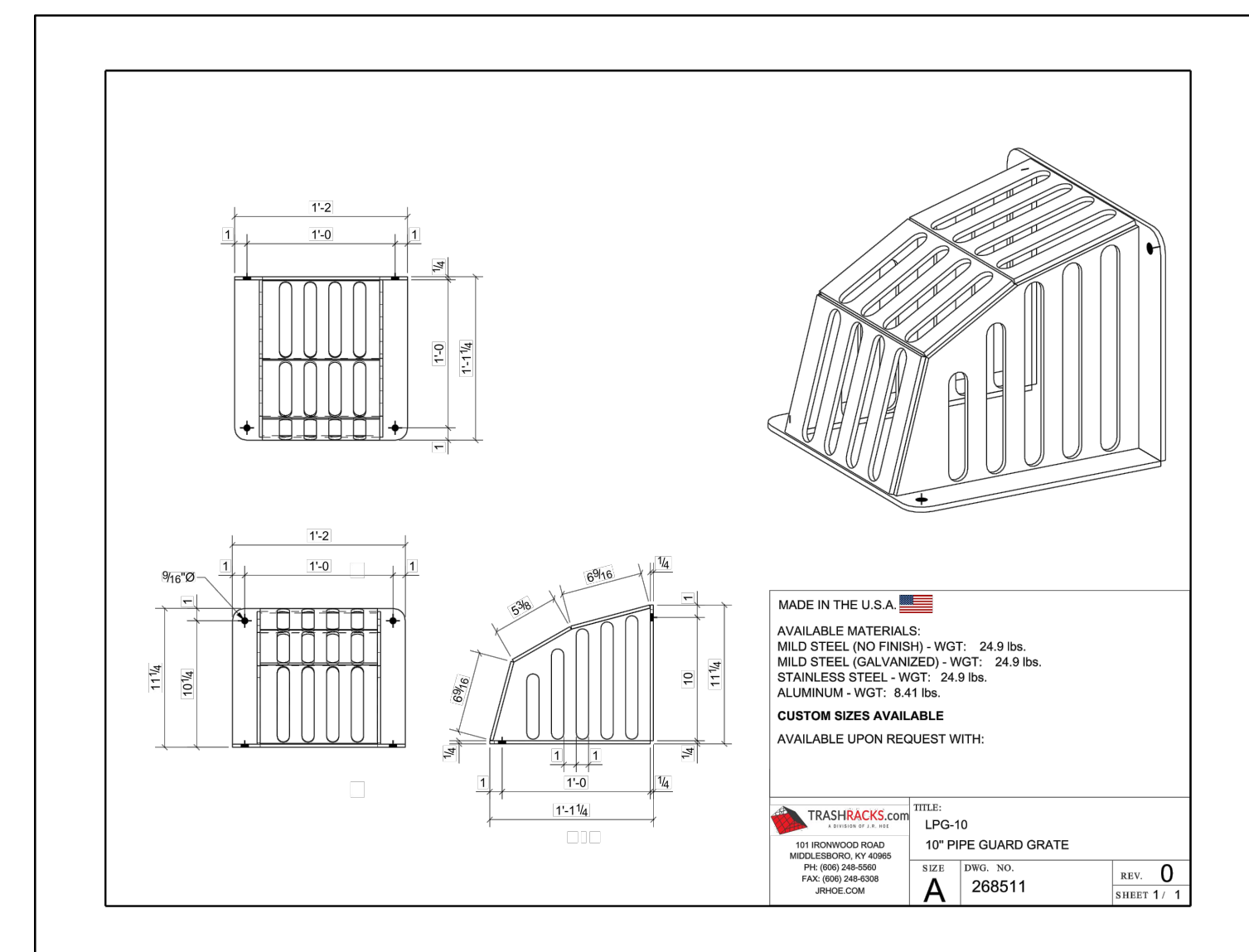
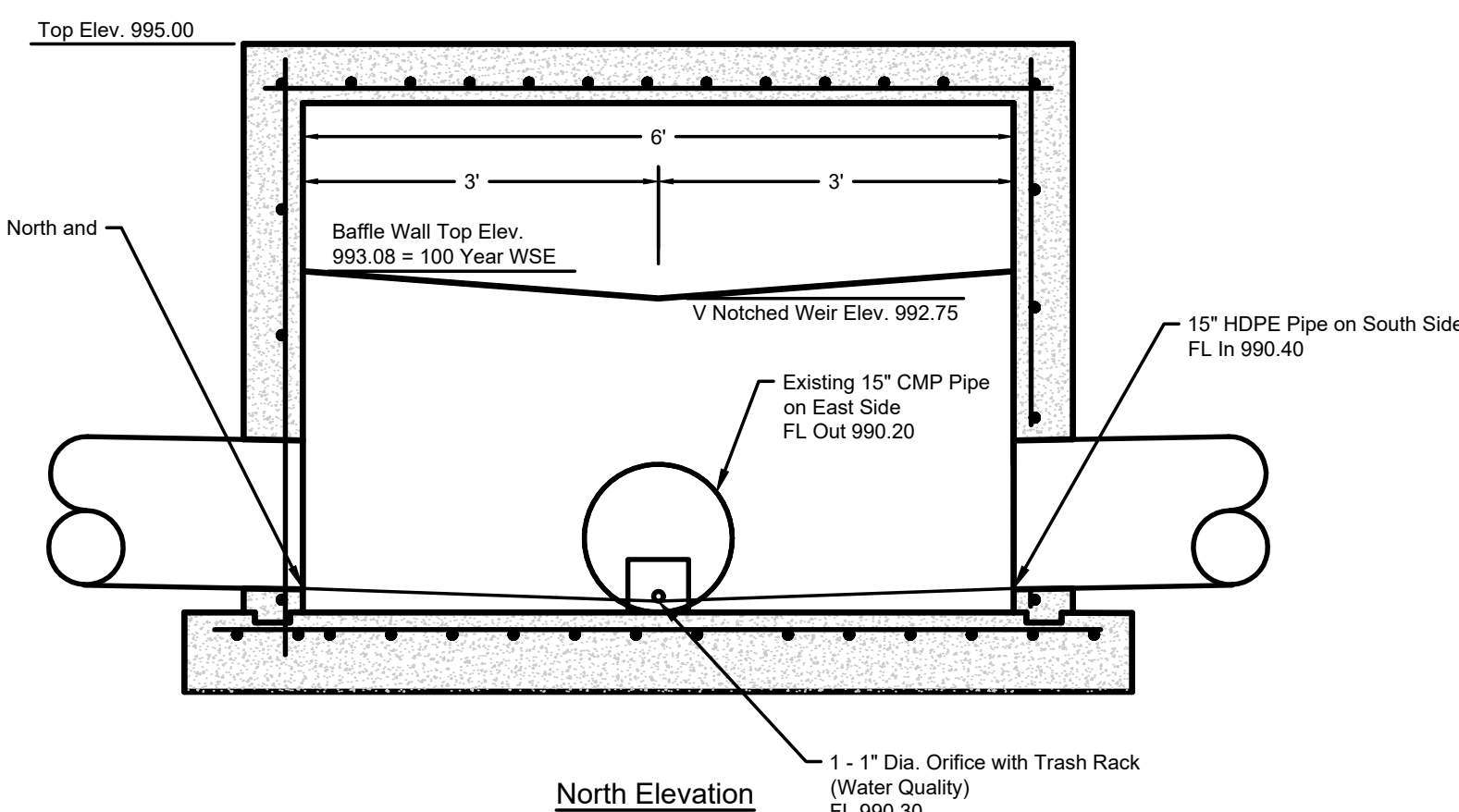
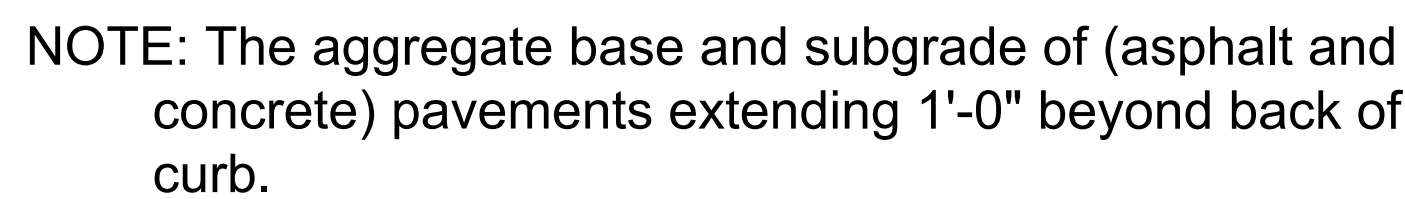
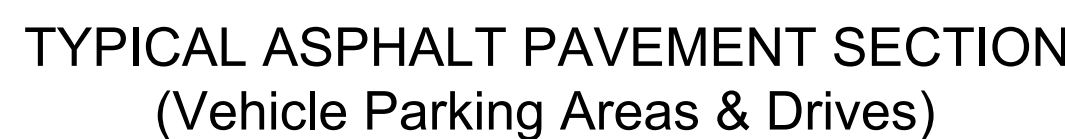
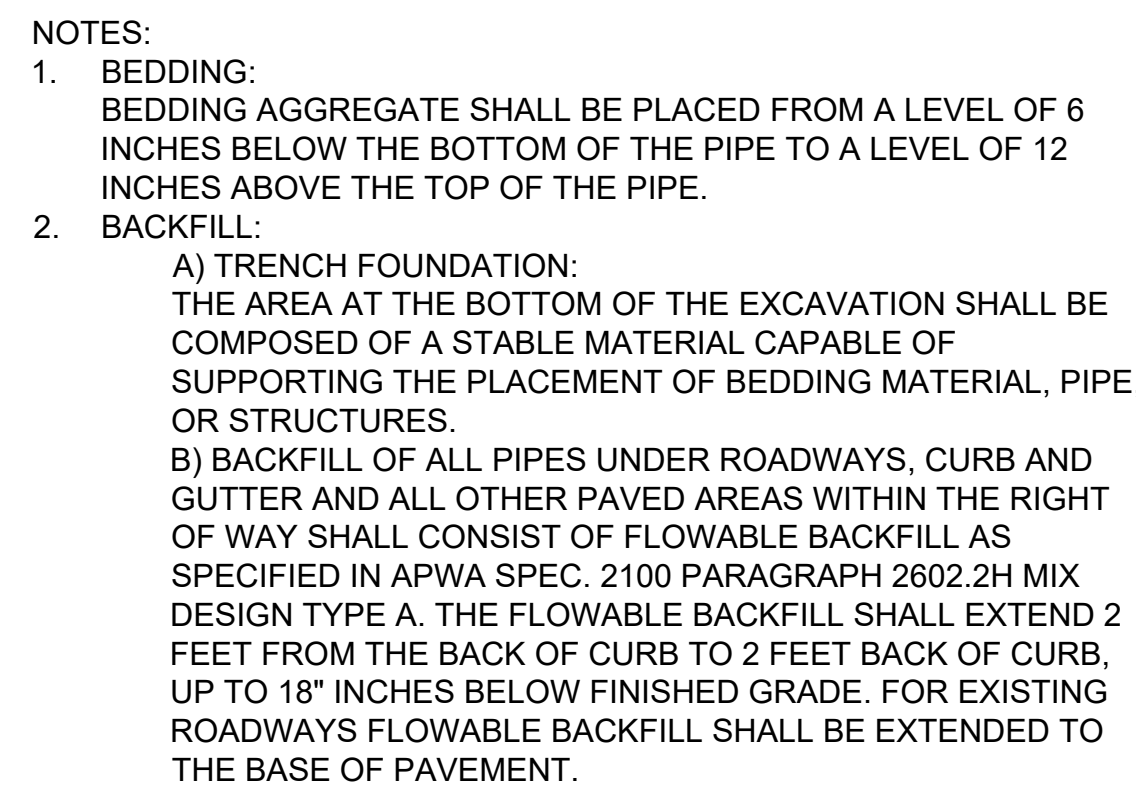
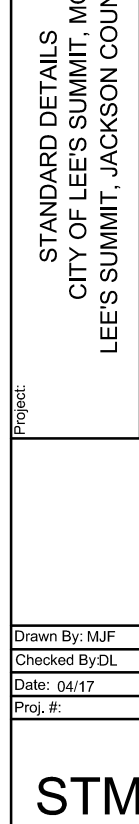
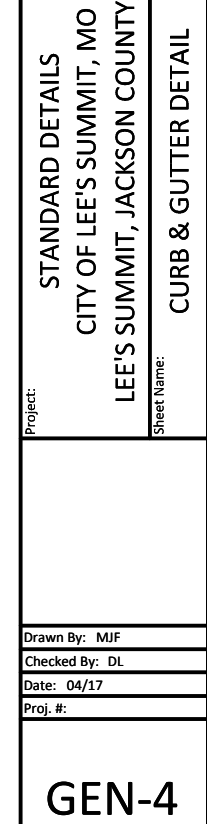
X-REF NO. 23-042 Base
DRAWING NO. 23-042 FDPs
DATE June 30, 2023
JOB NO. 23-042



**gconsult inc** engineers planners  
1533 Locust Street, Kansas City, Missouri 64108  
CORPORATE LICENSE NO. E201000573 (MO.) / E-1736 (KS.) / LS 2019005467

DATE	REVISION	NO.	BY	CORP.
07/28/23	PER CITY COMMENTS	1	SPW	RKS
06/30/23	SUBMITTED TO CITY OF LEE'S SUMMIT			
IF THIS IS NOT A BLUE INK SEAL AND THE SIGNATURE IN BLUE INK, THE PLAN IS A COPY AND MAY CONTAIN UNAUTHORIZED ALTERATIONS. THE CERTIFICATION CONTAINED ON THIS DOCUMENT SHALL NOT APPLY TO ANY COPIES				






DATE	REVISION	NO.	BY	CK/APP
07/28/23				
06/20/23	PER CITY'S COMMENTS	1	SPW	RIS
	SUBMITTED TO CITY OF LEE'S SUMMIT		SPW	RIS

THIS IS NOT A BLUE INK SEAL AND THE SIGNATURE IN BLUE INK. THE PLAN IS A COPY, AND ANY CONTAINED ALTERATIONS, THE CERTIFICATION CONTAINED ON THIS DOCUMENT SHALL NOT APPLY TO ANY COPIES



R. KEVIN STERRETT, MO E-26440



**Consult  
Inc**  
engineers  
planners

1533 Locust Street, Kansas City, Missouri 64108

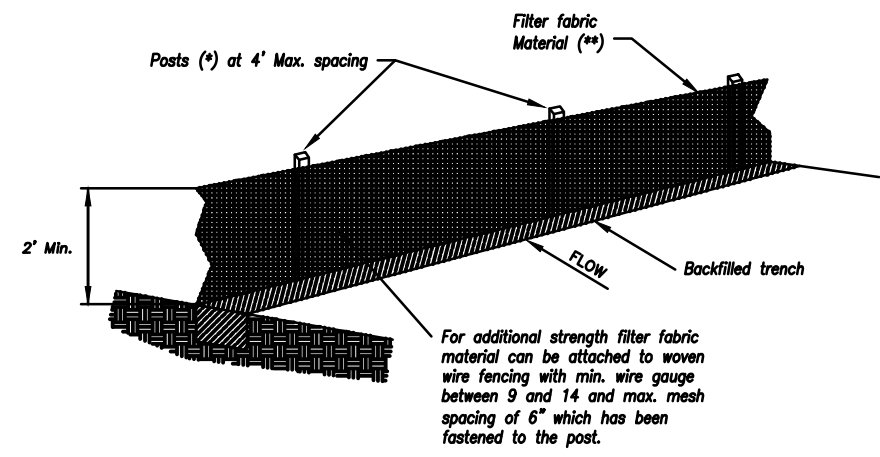
1555 LOCUST STREET, KANSAS CITY, MISSOURI 64108  
CORPORATE LICENSE No. E201000573 (MO.) / E-1736 (KS.) / LS 2019005467

FINAL DEVELOPMENT PLANS  
MISC. SITE DETAILS

OUR LADY OF THE PRESENTATION  
PARKING LOT EXPANSION  
CITY OF LEE'S SUMMIT, JACKSON COUNTY, MISSOURI

X-REF NO.  
23-042 Bas  
DRAWING NO.  
23-042 FDP  
DATE  
June 30, 202  
JOB NO.  
23-042

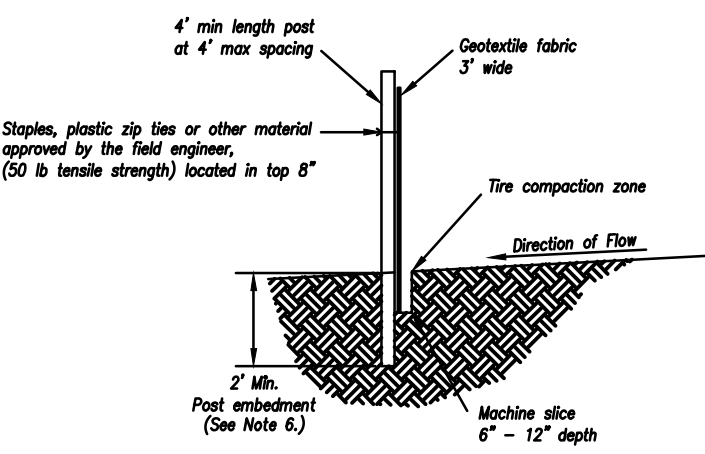




- (\*) EGOSIS
- MIN. LENGTH 4'
  - HARDWOOD 1 3/4" x 1 3/4"
  - NO.2 SOUTHERN PINE 2 3/4" x 2 3/4"
  - STEEL 1.33 LB/FT

(\*\*) - Geotextile Fabric shall meet the requirements of AASHTO M288

SILT FENCE DETAILS  
Not to Scale



Notes:

1. In order to contain water, the ends of the silt fence must be turned uphill (Figure A).
2. Long perimeter runs of silt fence must be limited to 100'. Runs should be broken up into several smaller segments to minimize water concentrations (Figure A).
3. Long slopes should be broken up with intermediate rows of silt fence to slow runoff velocities.
4. Attach fabric to upstream side of post.
5. Install posts a minimum of 2' into the ground.
6. Trenching will only be allowed for small or difficult installation, where slicing machine cannot be reasonably used.

Maintenance:

1. Remove and dispose of sediment deposits when the deposit approaches 1/2 the height of silt fence.
2. Repair as necessary to maintain function and structure.

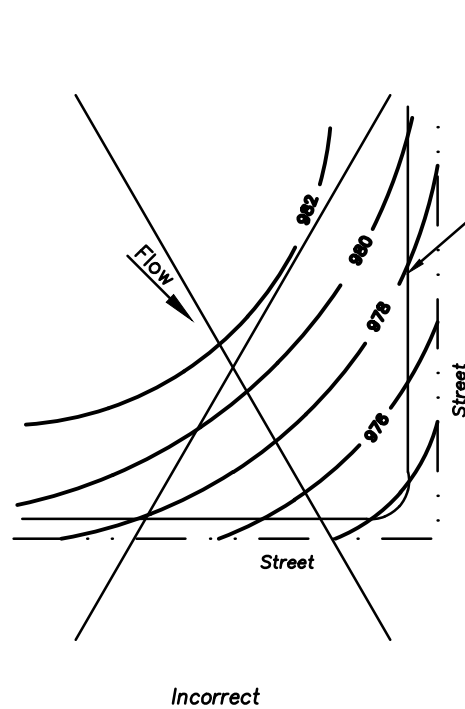
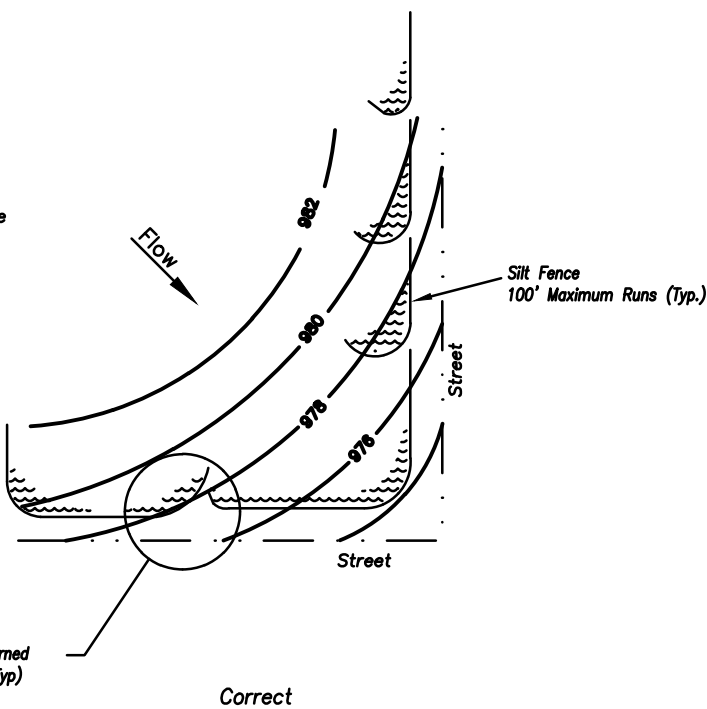
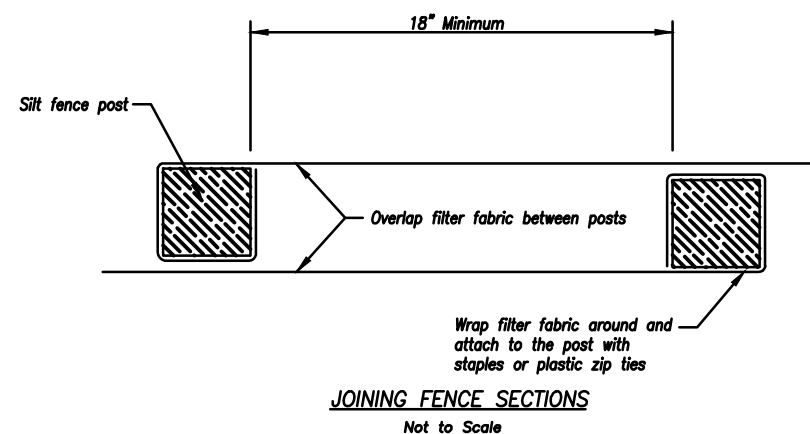
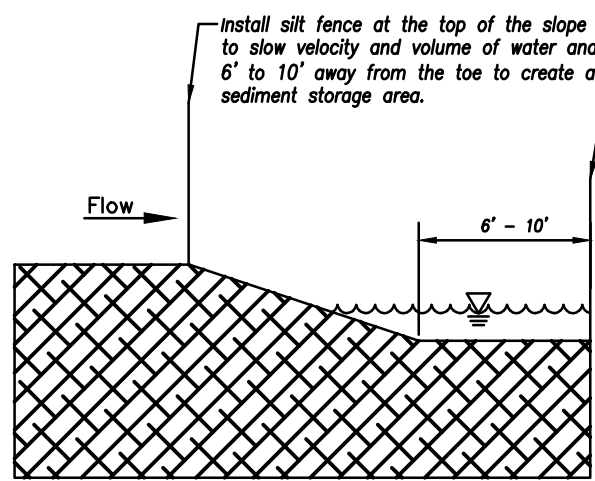


Figure A

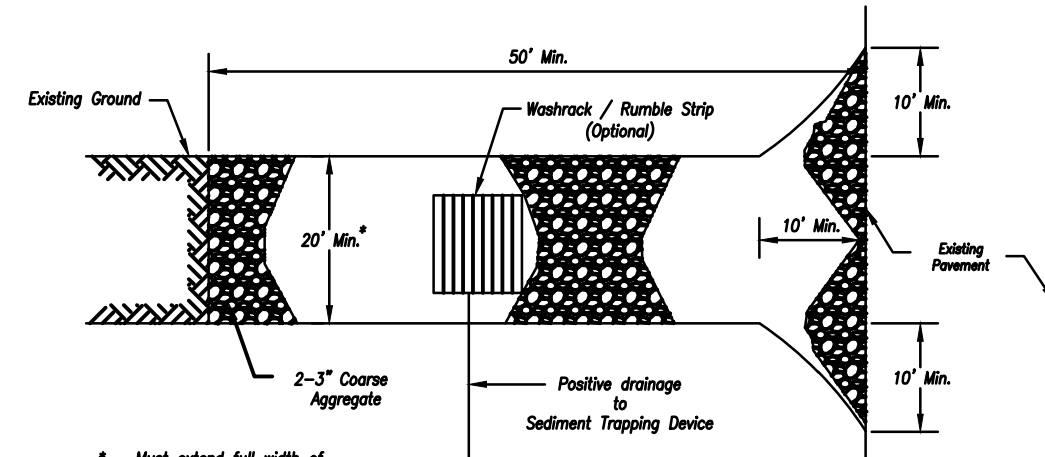


SILT FENCE LAYOUT  
Not to Scale

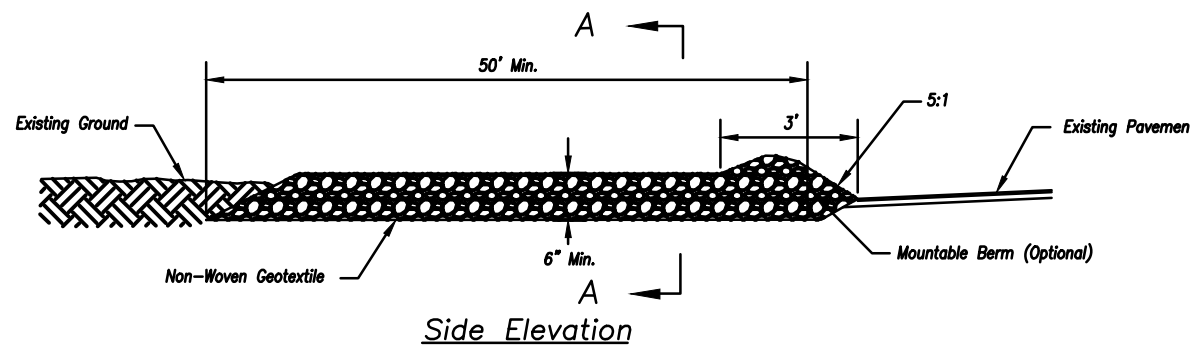


AMERICAN PUBLIC WORKS ASSOCIATION	
	KANSAS CITY METRO CHAPTER
SILT FENCE	STANDARD DRAWING NUMBER ESC-03 ADOPTED: 10/24/2016

Modified from 2015 Overland Park Standard Details for Erosion and Sediment Control.



Plan View  
Not to Scale



Section A-A  
Not to Scale

Notes for Construction Entrance:

1. Avoid locating on steep slopes, at curves on public roads, or downhill of disturbed area.
2. Remove all vegetation and other unsuitable material from the foundation area, grade, and crown for positive drainage.
3. If slope towards the public road exceeds 2%, construct a 6'- to 8'-ish high ridge with 3:1 IV side slopes across the foundation approximately 15 feet from the edge of the public road to divert runoff from it.
4. Install pipe under the entrance if needed to maintain drainage ditches along public roads.
5. Place stone to dimensions and grade as shown on plans. Leave surface sloped for drainage.
6. Divert all surface runoff and drainage from the entrance to a sediment control device.
7. If conditions warrant, place geotextile fabric on the graded foundation to improve stability.

Maintenance for Construction Entrance:

1. Reshape entrance as needed to maintain function and integrity of installation. Top dress with clean aggregate as needed.

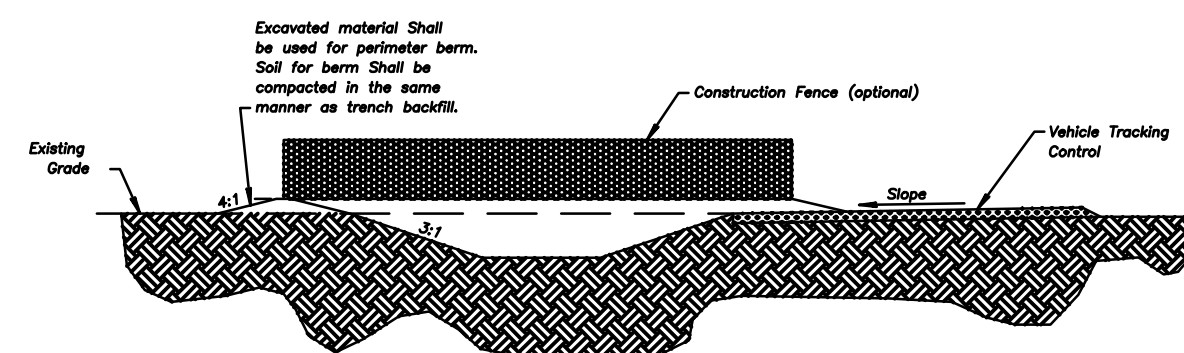
CONSTRUCTION ENTRANCE

Notes for Concrete Washout:

1. Concrete washout areas shall be installed prior to any concrete placement on site.
2. Concrete washout area shall include a flat subbase pit sized relative to the amount of concrete to be placed on site. The slopes leading out of the subbase pit shall be 3:1. The vehicle tracking pad shall be sloped towards the concrete washout area.
3. Vehicle tracking control is required at the access point to all concrete washout areas.
4. Signs shall be placed at the construction site entrance, washout area and elsewhere as necessary to clearly indicate the location(s) of the concrete washout area(s) to operators of concrete truck and pump rigs.
5. A temporary impervious liner may be required along the bottom and sides of the subbase pit in sandy or gravelly soils.

Maintenance for Concrete Washout:

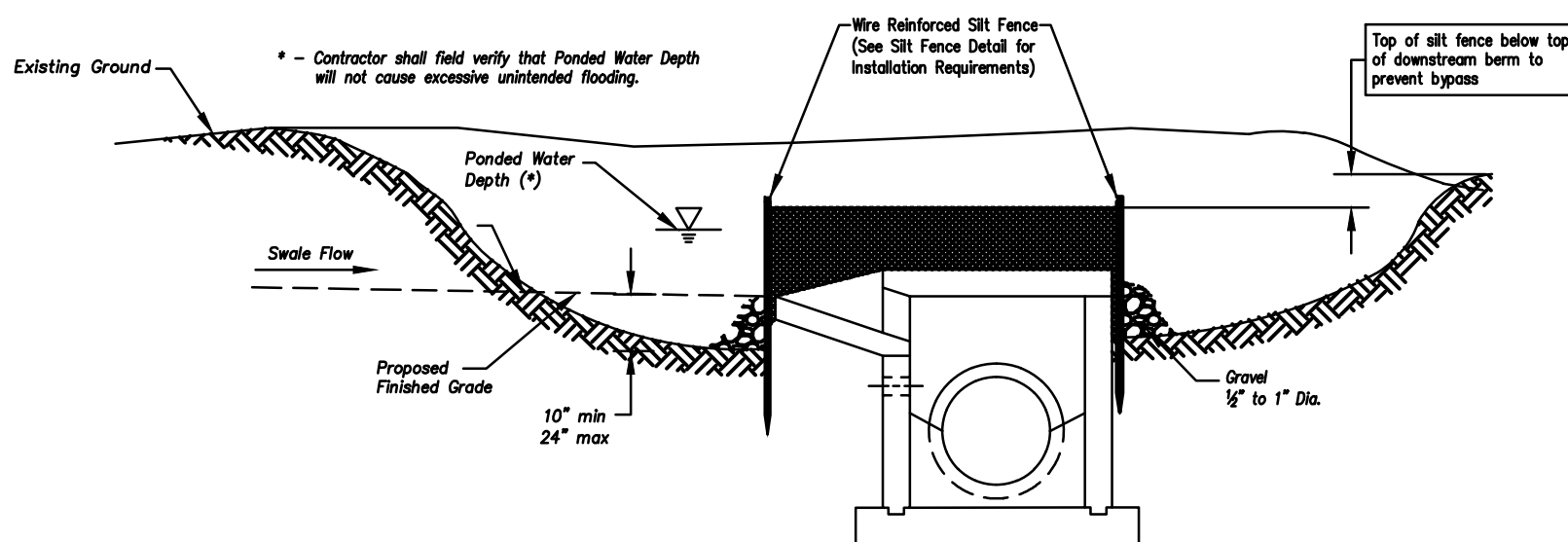
1. Concrete washout materials shall be removed once the materials have filled the washout to approximately 75% full.
2. Concrete washout areas shall be enlarged as necessary to maintain capacity for washed concrete.
3. Concrete washout water, wasted pieces of concrete and all other debris in the subbase pit shall be transported from the job site in a water-tight container and disposed of properly.
4. Concrete washout areas shall remain in place until all concrete for the project is placed.
5. When concrete washout areas are removed, excavations shall be filled with suitable compacted backfill and topped, any disturbed areas associated with the installation, maintenance, and/or removal of the concrete washout areas shall be stabilized.



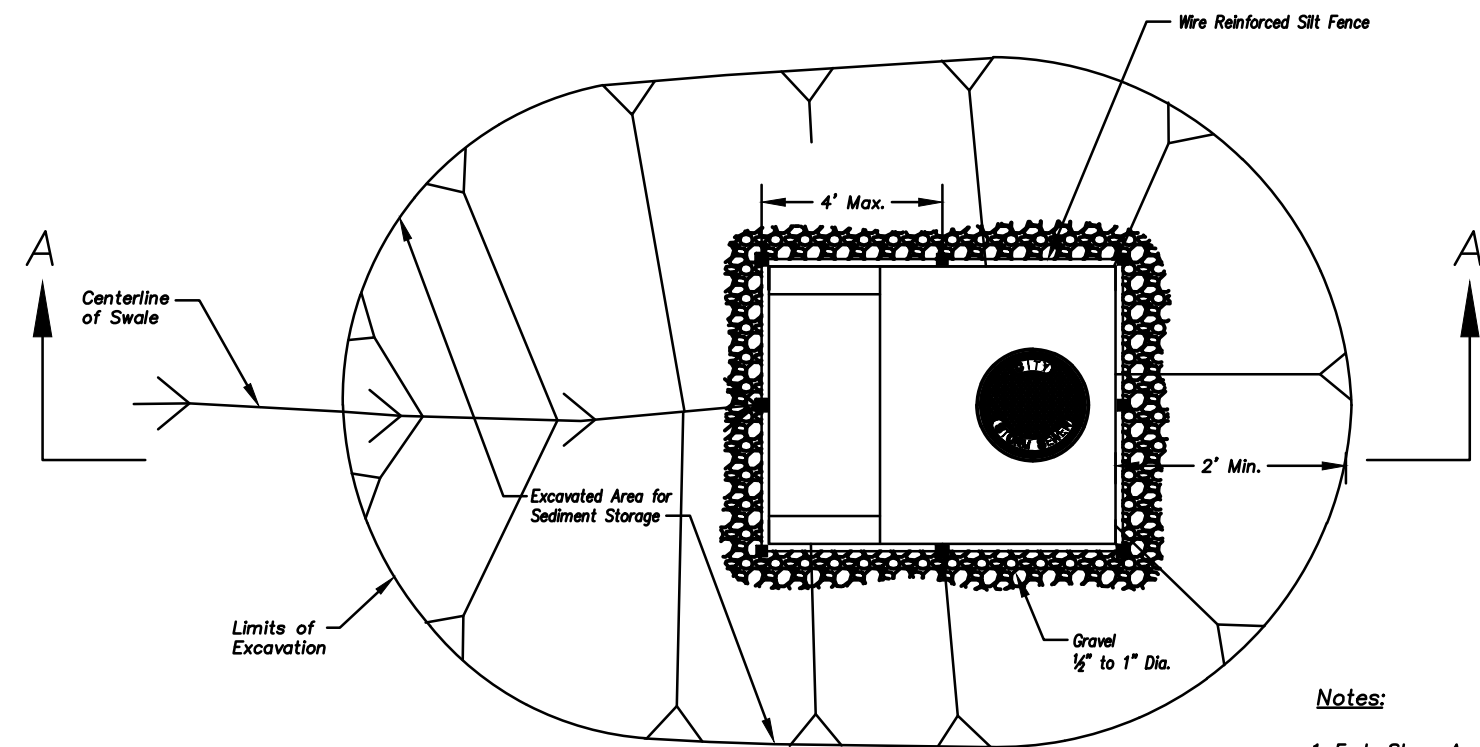
CONCRETE WASHOUT

Construction Entrance modified from 2015 Overland Park Standard Details for Erosion and Sediment Control; Concrete Washout modified from 2009 City of Great Bend Standard Drawings.

AMERICAN PUBLIC WORKS ASSOCIATION	
	KANSAS CITY METRO CHAPTER
CONSTRUCTION ENTRANCE AND CONCRETE WASHOUT	STANDARD DRAWING NUMBER ESC-01 ADOPTED: 10/24/2016



Section A-A  
Not to Scale

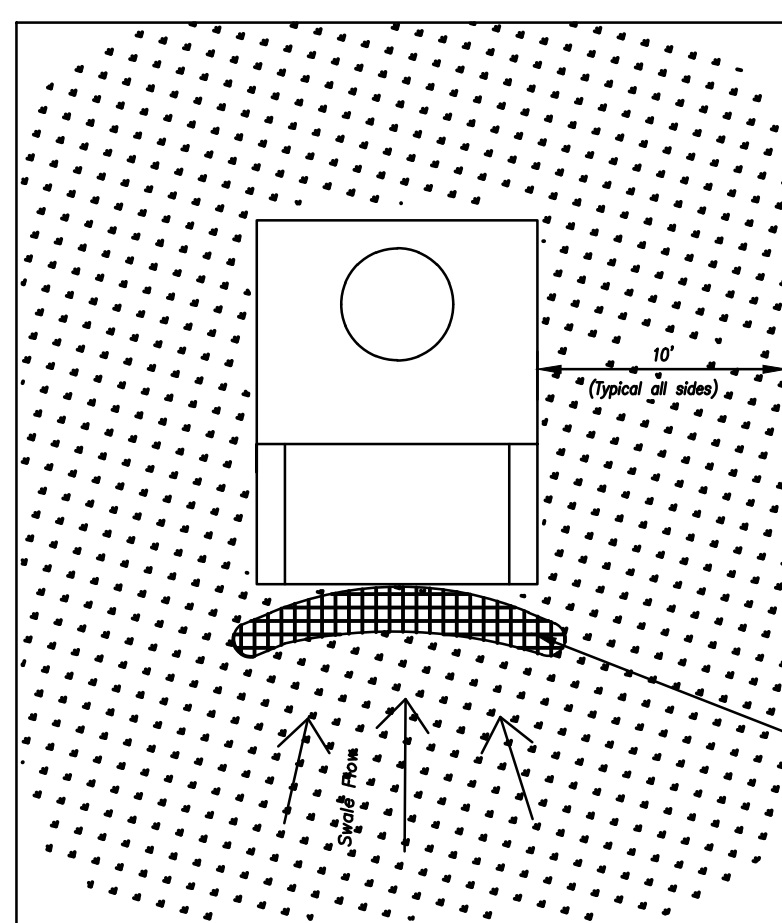


EARLY STAGE AREA INLET  
(All open boxes and inlets not at final grade)

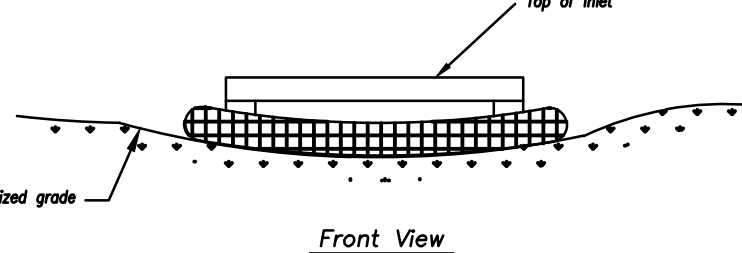
Notes:

1. Early Stage Area Inlet Sediment Barrier to be installed immediately after inlet or junction box is constructed.
2. Silt fence shall remain in place until excavated area is removed and Late Stage Area Inlet is being installed.
3. Backfill excavated area ONLY after final grading of the site. Stabilization of the site is to immediately follow.
4. Wire reinforced silt fence may be used in place of silt fence attached to wood frame.

Modified from 2015 Overland Park Standard Details for Erosion and Sediment Control.



Plan  
Not to Scale



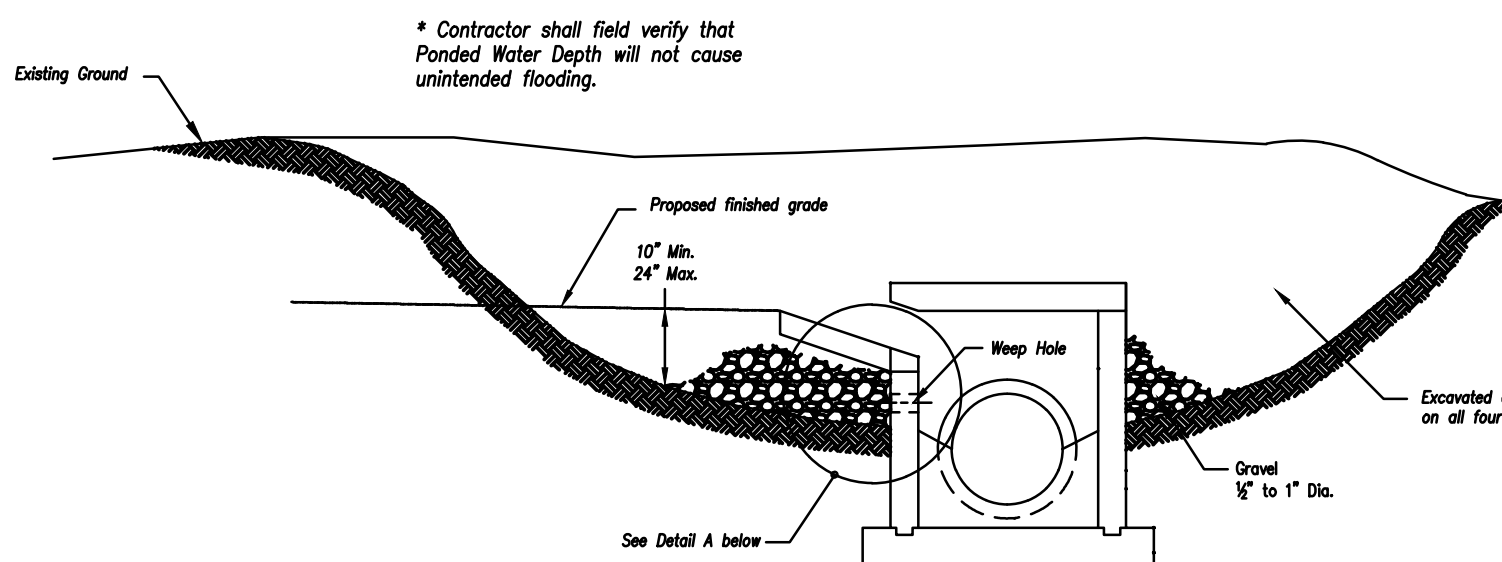
Front View

LATE STAGE AREA INLET  
(Area inlets at final grade and existing inlets)

Maintenance:

1. Remove deposited sediment from excavated storage areas when available storage has been reduced by 20%.
2. Remove deposited sediment from filter socks or similar when any accumulation of sediment is visible.
3. Repair or replace as necessary to maintain function and integrity of installation.

AMERICAN PUBLIC WORKS ASSOCIATION	
	KANSAS CITY METRO CHAPTER
AREA INLET AND JUNCTION BOX PROTECTION	STANDARD DRAWING NUMBER ESC-07 ADOPTED: 10/24/2016



Detail A

EARLY STAGE CURB INLET  
(Open Box and Prior to Pouring  
Curb and Inlet Throat)

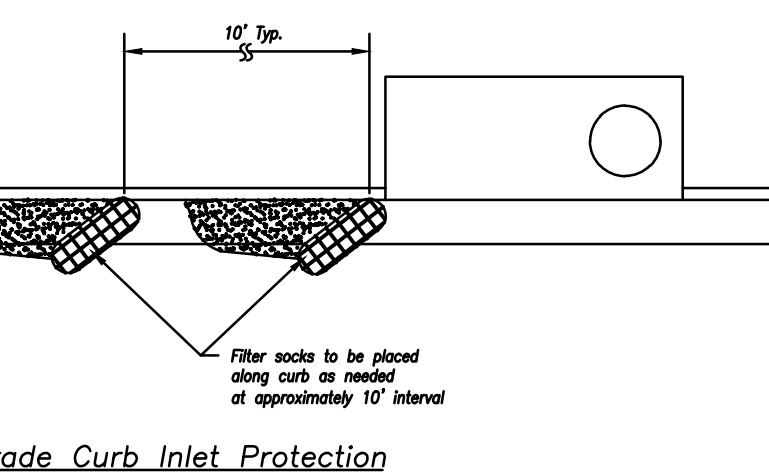
Notes:

1. Immediately following inlet construction and prior to construction of curb and inlet throat, protect inlet opening by installing 2" x 10" (min.) board wrapped in silt fence. Structures shall have excavated storage area on all four sides to allow settling of sediment (Early Stage Curb Inlet).
2. When inlet is completed and curb poured, filter socks or approved equal should be used (Late Stage Curb Inlet). Storm water is not approved for curb inlet use.
3. Contractor to field verify ponding water shall not create a traffic hazard.

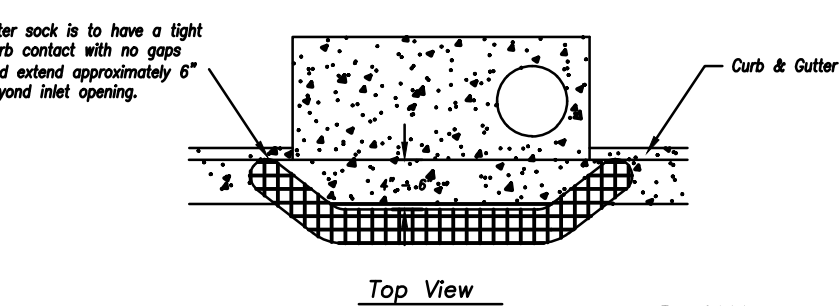
Maintenance:

1. Remove deposited sediment from excavated storage areas when available storage has been reduced by 20%.
2. Remove deposited sediment from filter socks or similar when any accumulation of sediment is visible.
3. Repair or replace as necessary to maintain function and integrity of installation.

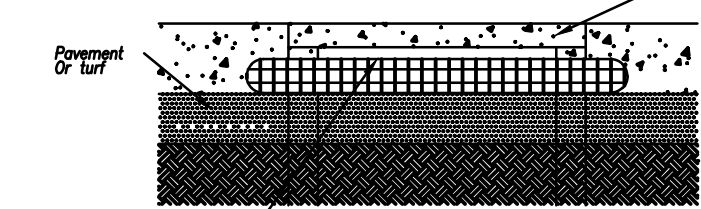
Modified from 2015 Overland Park Standard Details for Erosion and Sediment Control.



On Grade Curb Inlet Protection



Top View



Front View

Sump Inlet Sediment Filter

LATE STAGE CURB INLET  
(After Pouring Curb and Inlet Throat)

AMERICAN PUBLIC WORKS ASSOCIATION	
	KANSAS CITY METRO CHAPTER
CURB INLET PROTECTION	STANDARD DRAWING NUMBER ESC-06 ADOPTED: 10/24/2016



**consult inc** engineers planners

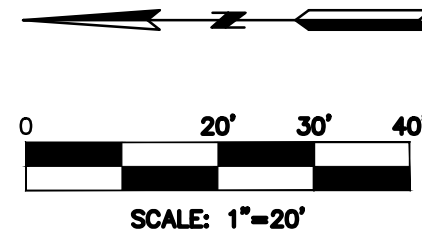
1533 Locust Street, Kansas City, Missouri 64108  
CORPORATE LICENSE NO. E20100573 (MO.) / E-1736 (KS.) / LS 201905467

FINAL DEVELOPMENT PLANS  
MISC. SITE DETAILS

OUR LADY OF THE PRESENTATION  
PARKING LOT EXPANSION  
CITY OF LEE'S SUMMIT, JACKSON COUNTY, MISSOURI

X-REF NO. 23-042 Base
DRAWING NO. 23-042 FDPs
DATE June 30, 2023
JOB NO. 23-042







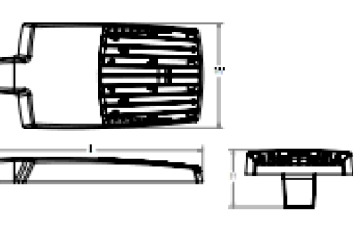


## RSX2 LED Area Luminaire



### Specifications

Beam Angle: 60° (60° beam)  
Length: 24" (24" long)  
Width: 12" (12" wide)  
Height: 3" (3" high)  
Weight: 12.5 lbs (12.5 lbs)  
GPA Mount: 360° (360°)



### Introduction

The new RSX2 LED Area family delivers maximum value by providing significant energy savings, long life and outstanding photometric performance at an affordable price. The RSX2 delivers 11,000 to 30,000 lumens allowing it to replace 250W to 1000W HID luminaires.

The RSX2 features an integral universal mounting mechanism that allows the luminaire to be mounted on most existing wall and pole patterns. The "Zero-Start" solution provides significant labor savings. An easy access door on the bottom of mounting arm allows for wiring without opening the electrical compartment. A mast arm adapter, adjustable integral adjuster and other mounting configurations are available.



Personalized logo placed background quality for the design select program and design it. Services, to illuminate your design select, with professional and modern details.



CS logo

CS logo

CS logo

CS logo

CS logo

CS logo

CS logo

CS logo

CS logo

CS logo

CS logo

CS logo

CS logo

CS logo

CS logo

CS logo

CS logo

CS logo

CS logo

CS logo

CS logo

CS logo

CS logo

CS logo

CS logo

CS logo

CS logo

CS logo

CS logo

CS logo

CS logo

CS logo

CS logo

CS logo

CS logo

CS logo

CS logo

CS logo

CS logo

CS logo

CS logo

CS logo

CS logo

CS logo

CS logo

CS logo

CS logo

CS logo

CS logo

CS logo

CS logo

CS logo

CS logo

CS logo

CS logo

CS logo

CS logo

CS logo

CS logo

CS logo

CS logo

CS logo

CS logo

CS logo

CS logo

CS logo

CS logo

CS logo

CS logo

CS logo

CS logo

CS logo

CS logo

CS logo

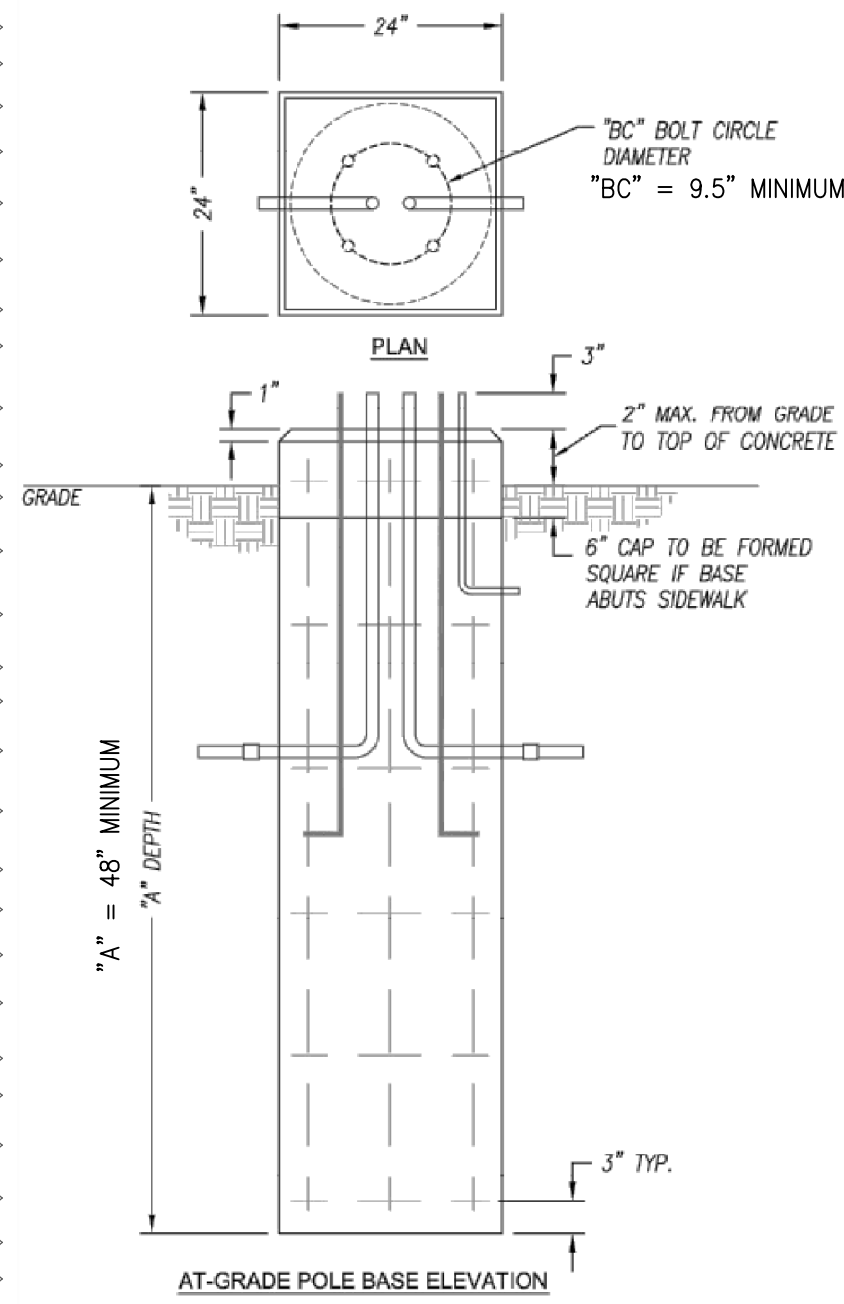
CS logo

CS logo

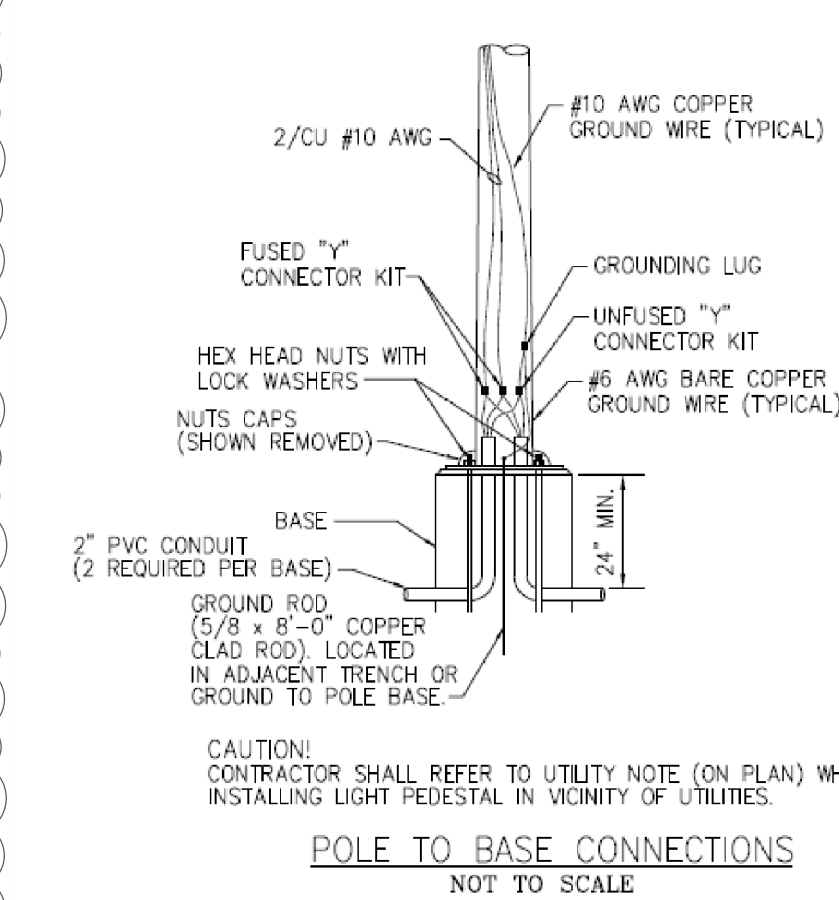
CS logo

CS logo

### POLE BASE DETAIL - CONFIRM "A" & "BC" DIM WITH POLE MANUFACTURER



### POLE-TO-BASE CONNECTION DETAIL



## SPECIFICATIONS

- ALL CONDUCTORS SHALL BE THHN COPPER ABOVE GRADE, XHHW-2 BELOW GRADE, MINIMUM #12.
- ALL WIRING EXPOSED TO WEATHER OR BELOW GRADE SHALL BE IN RIGID GALVANIZED CONDUIT OR SCH. 40 PVC.
- ALL OTHER WIRING SHALL BE IN EMT, SCH. 40 PVC OR MC CABLE, UNLESS PROTECTED AND ENCLOSED WITHIN BUILDING MATERIALS, IN WHICH CASE TYPE NM CABLE MAY BE USED.
- THE ENTIRE SYSTEM SHALL BE ELECTRICALLY CONTINUOUS AND PROPERLY GROUNDED. EVERY FEEDER AND BRANCH CONDUIT SHALL HAVE CODE SIZED GREEN INSULATED GROUND CONDUCTOR.
- "MH" = MOUNTING HEIGHT (IN FEET)

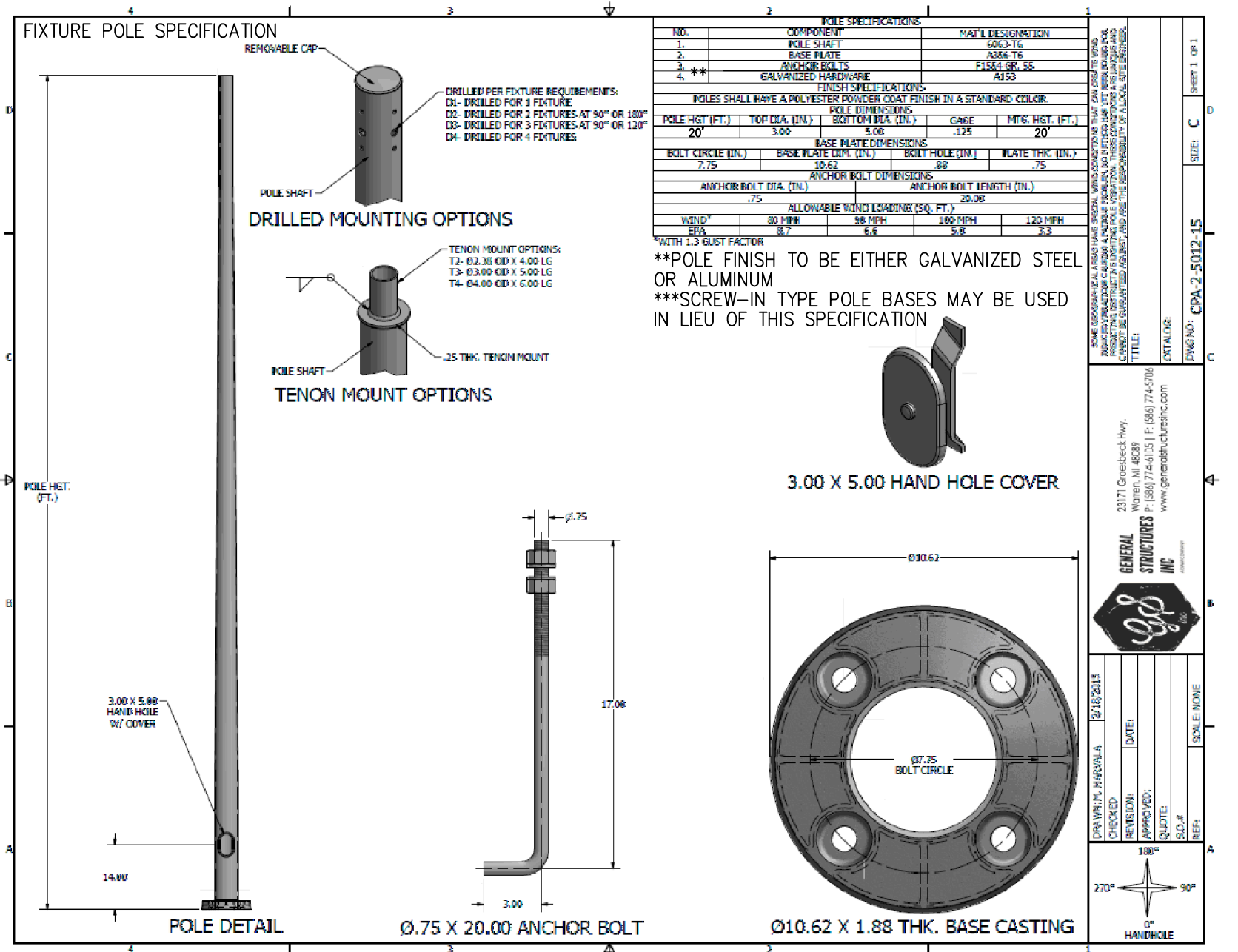
## SYMBOLS LEGEND

NOTE: THIS IS A MASTER LEGEND AND NOT ALL SYMBOLS, ETC, ARE NECESSARILY USED ON THE DRAWINGS.

- SITE LIGHTING FIXTURE WITH HOUSE SIDE SHIELD. MOUNT AT 15'-0". BASIS OF DESIGN: LITHONIA RSX2.

## GENERAL NOTE

- ALL WORK SHALL COMPLY WITH THE LEE'S SUMMIT, MO UNIFIED DEVELOPMENT ORDINANCE ARTICLE 8 SUBDIVISION 5. - LIGHTING STANDARDS.
- ALL ELECTRICAL/CONDUIT STREET CROSSINGS NEED TO BE BACKFILLED WITH AB-3 OR FLOWABLE FILL IN ACCORDANCE WITH MUNICIPAL REQUIREMENTS.



## LIGHT FIXTURE SPECS

SCALE: NONE

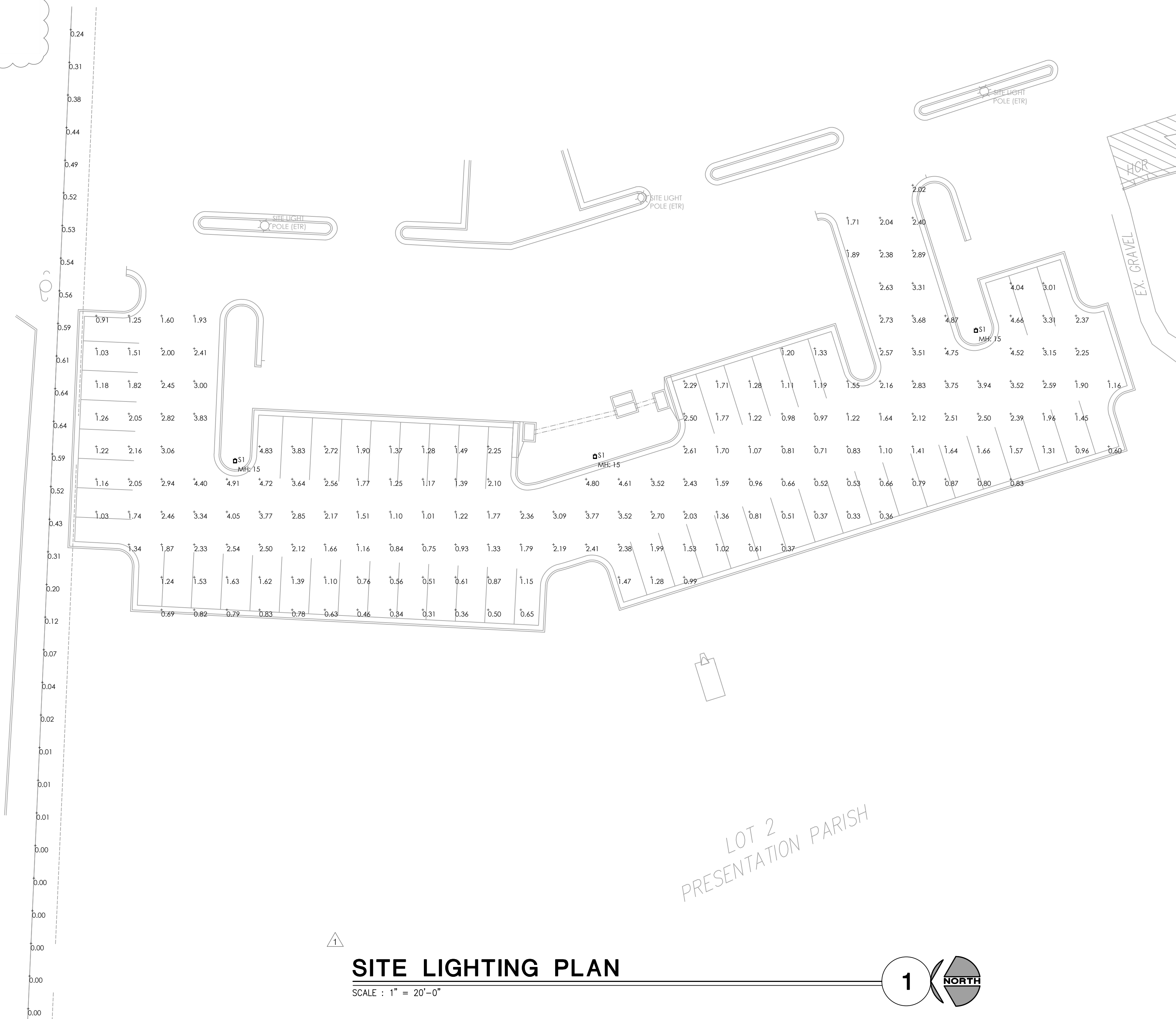
Luminaire Schedule		LLF	Luminaire Lumens	Luminaire Watts
Tag	Description			
S1	RSX2 LED P4 30K R5	0.800	23358	189.54

Calculation Summary		Units	Avg	Max	Min	Max/Min
Label						
Parking Lot	Fc		1.90	4.91	0.31	15.84
Property Line	Fc		0.18	0.64	0.00	N.A.

## SCHEDULES

SCALE: NONE

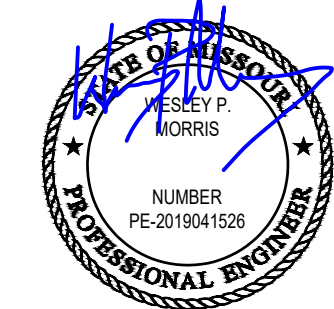
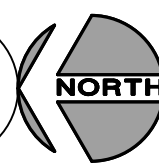
3



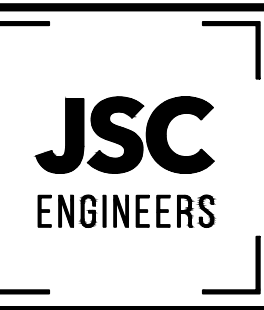
## SITE LIGHTING PLAN

SCALE : 1" = 20'-0"

1



ENGINEER:



MO COA NO. 201908765 / KS COA NO. E-2818  
1925 CENTRAL ST. STE 201  
KANSAS CITY, MO 64108  
phone: (816) 272-5289  
email: jsmothers@jseengineers.com

## Site Lighting Plan for: OLPC PARKING LOT EXPANSION

LEE'S SUMMIT - JACKSON COUNTY - MISSOURI

DATE ISSUED:  
06.26.2023

REVISIONS:

- PLAN CHECK - 07.25.2023
- PLAN CHECK - 08.10.2023

PROJECT NUMBER  
JSC 23-121

SHEET NUMBER

SITE  
PHOTOMETRIC  
PLAN

ES-1