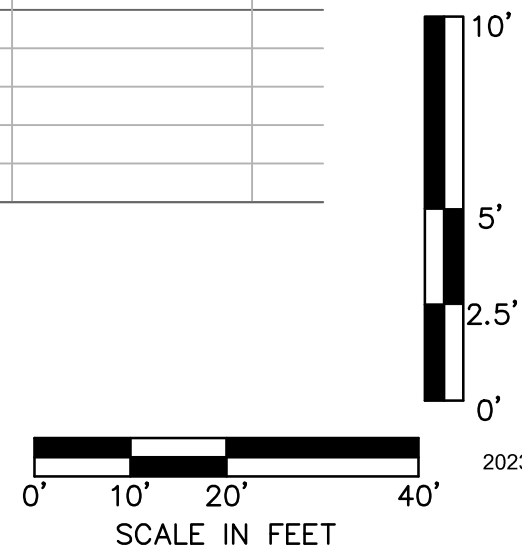
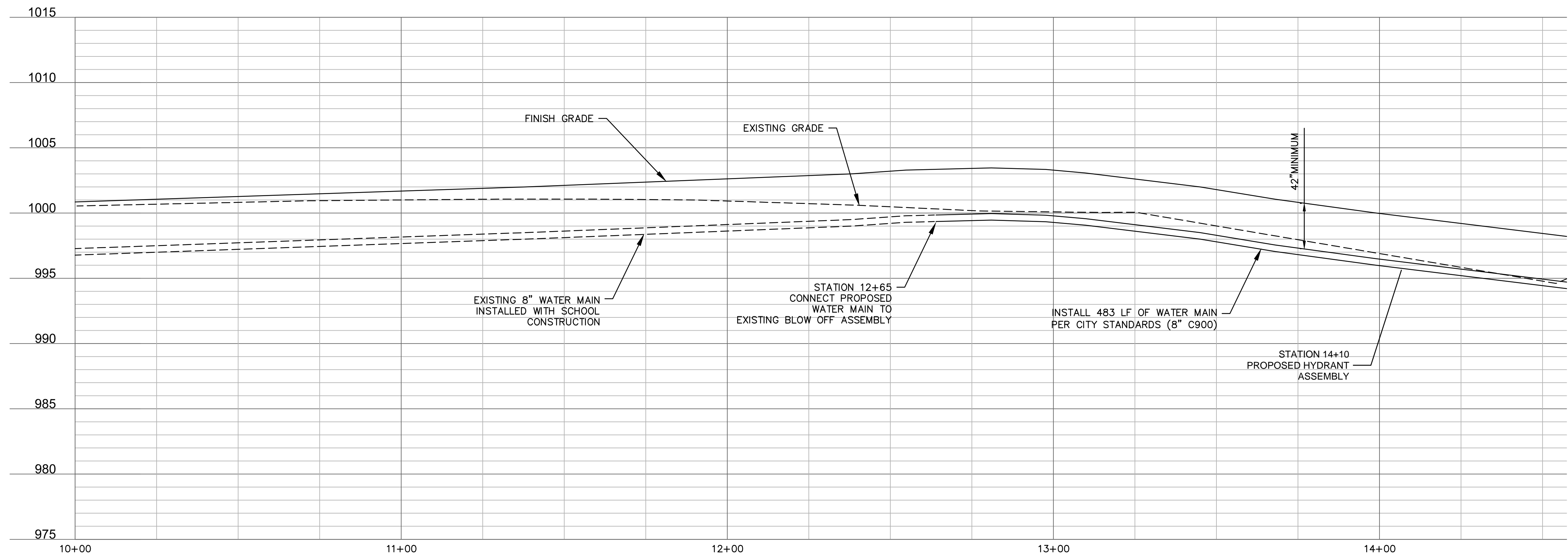
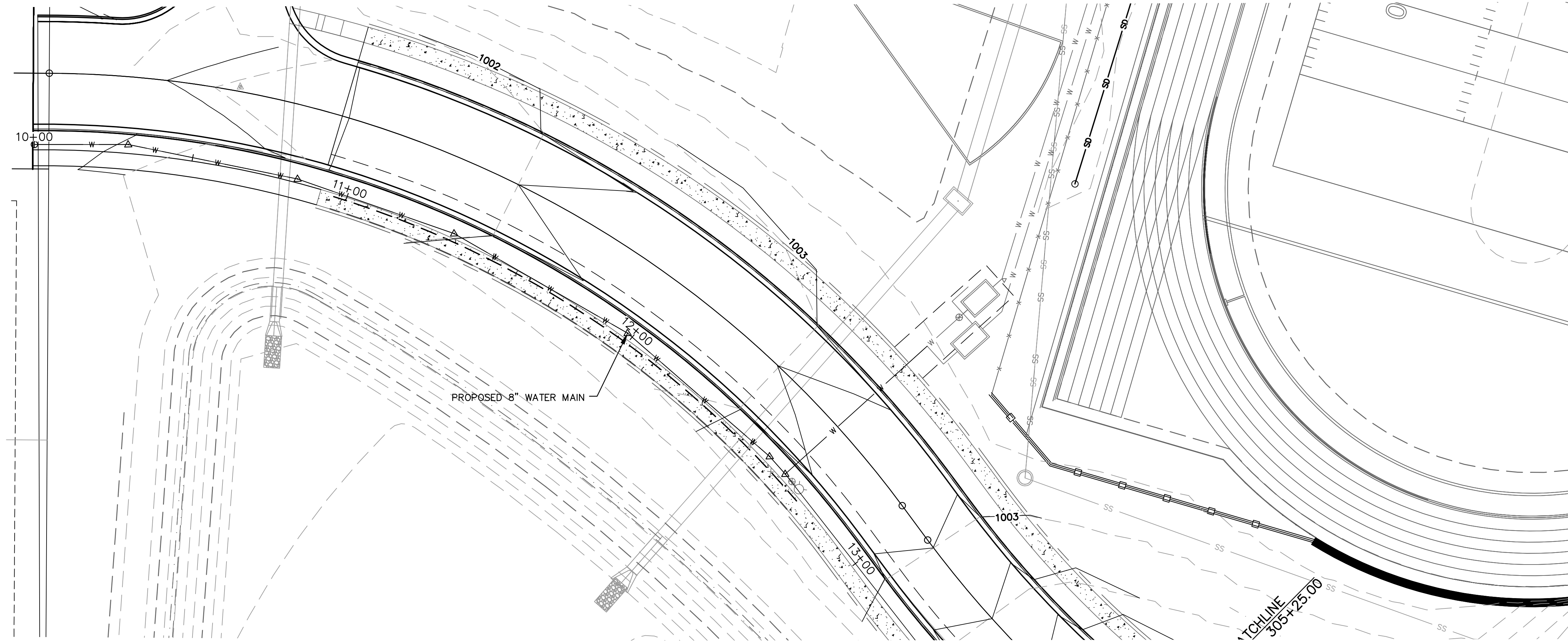


DWG: F:\2020\0001-0500\020-0103\40-Design\Exhibits\GNC\20230215_scp_watrc_CAPE_0200103 Exhibit.dwg USER: jfriling
 DATE: Sep 07, 2023 3:06pm XREFS: T_P\BLK_0200103 V_XB0J-2_00103 T_P\STIR_0200103 C_P\BASE_CAPE_0200103 T_P\PROF_0200103tmp



Olsson Engineering - MO State Certificate of Authority #001592
 7301 West 133rd Street, Suite 200 TEL: 913.381.1170
 Overland Park, KS 66213-4750 FAX: 913.381.1174 www.olsson.com

WATER MAIN EXTENSION PLAN & PROFILE
SE CAPE DRIVE

LEE'S SUMMIT MIDDLE SCHOOL #4
 EXHIBIT A

LEE'S SUMMIT, MISSOURI

REV. NO.	DATE	REVISIONS DESCRIPTION	BY

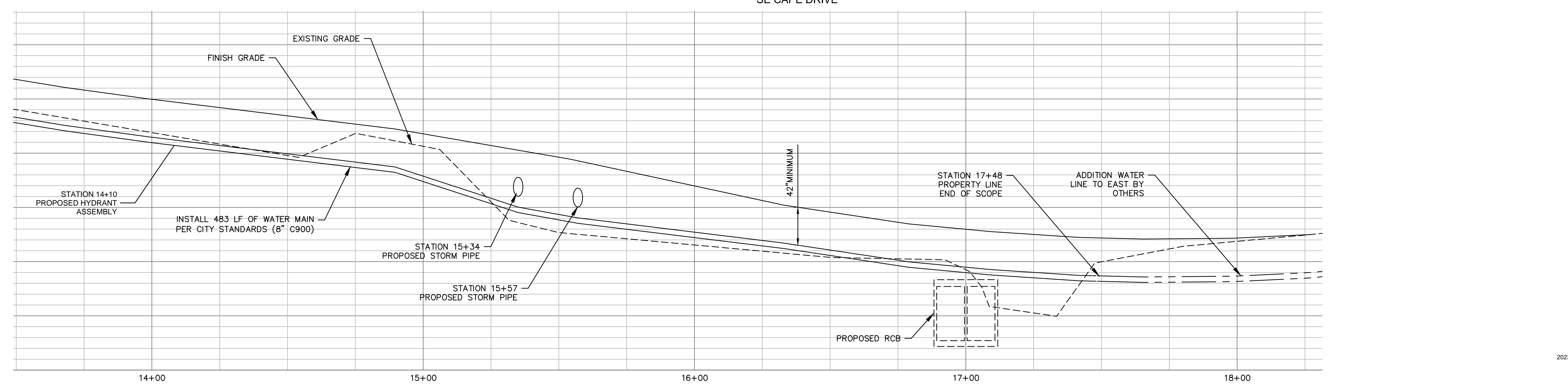
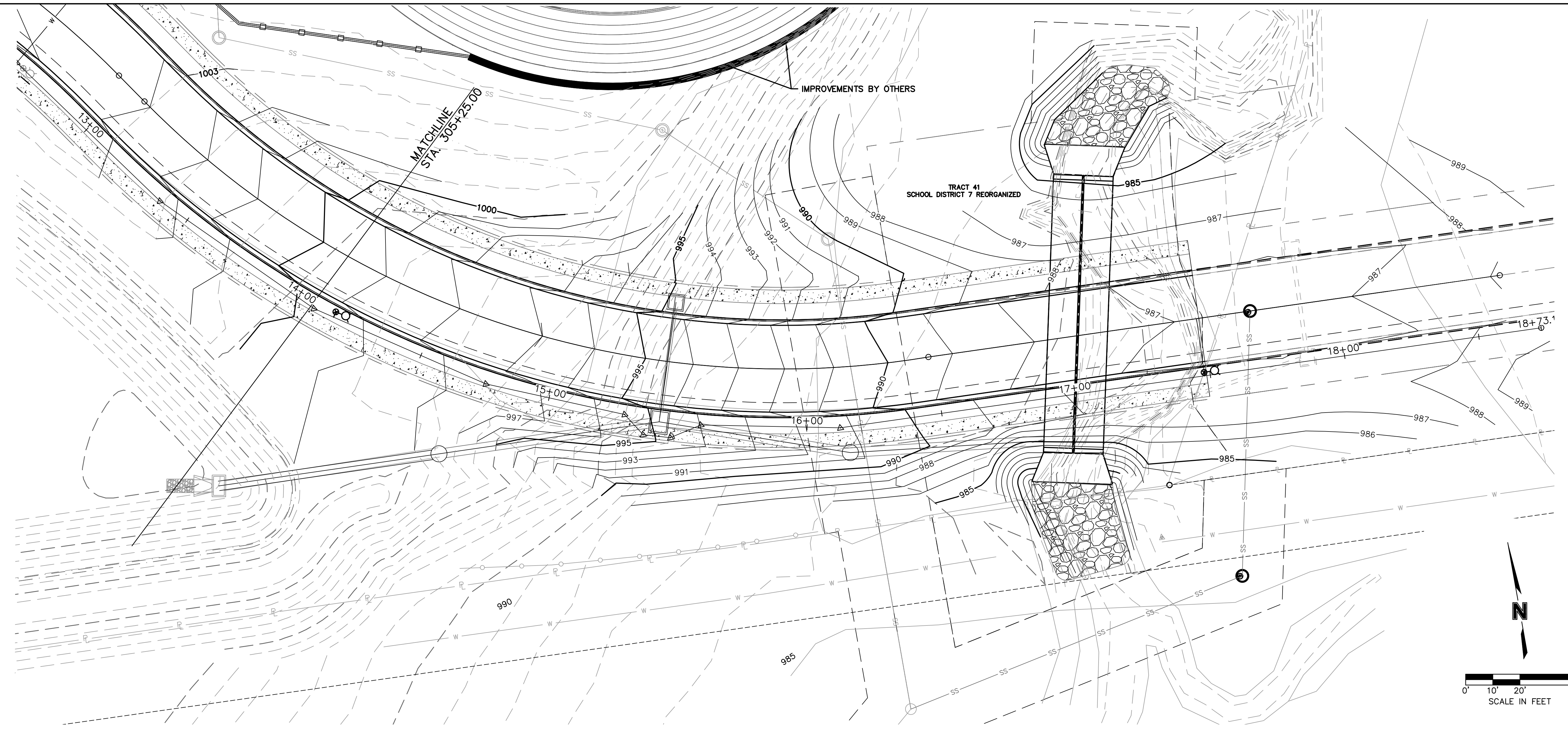
2022

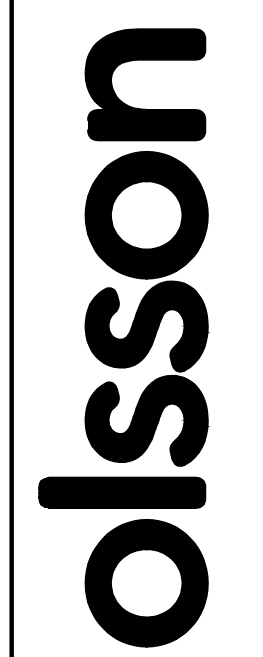
REVISIONS

C.O.A. NO.: 001592
 DRAWN BY: RLK
 CHECKED BY: TR
 APPROVED BY: TR
 QA/QC BY: TR
 PROJECT NO.: 020-0103
 DATE: 2021-02-01

SHEET
1 OF 2

DWG: F:\2020\0001-0500\020-0103\40-Design\Exhibits\GNCV\20230215_scape_waterC_CAPE_0200103 Exhibit.dwg
 DATE: Sep 07, 2023 2:47pm
 USER: jfriling
 T_PPRF_0200103tmp
 C_PBASE_CAPE_0200103
 T_PSTRM_0200103
 V_XB0J-2_00103
 V_XTOPO-2_00103





Olsson Engineering - MO State Certificate of Authority #001592
 7301 West 133rd Street, Suite 200 TEL: 913.381.1170
 Overland Park, KS 66213-4750 FAX: 913.381.1174 www.olsson.com

WATERMAIN EXTENSION PLAN & PROFILE
SE CAPE DRIVE

LEE'S SUMMIT MIDDLE SCHOOL #4
EXHIBIT A

LEE'S SUMMIT, MISSOURI

REV. NO.	DATE	REVISIONS DESCRIPTION	BY

C.O.A. NO.: 001592
 DRAWN BY: RLK
 CHECKED BY: TR
 APPROVED BY: TR
 QA/QC BY: TR
 PROJECT NO.: 020-0103
 DATE: 2021-02-01

20230215

2022

SHEET
2 OF 2