

# CLEAN AIR TECHNOLOGIES

TEL. 1-800-265-3878

# EUROVAC

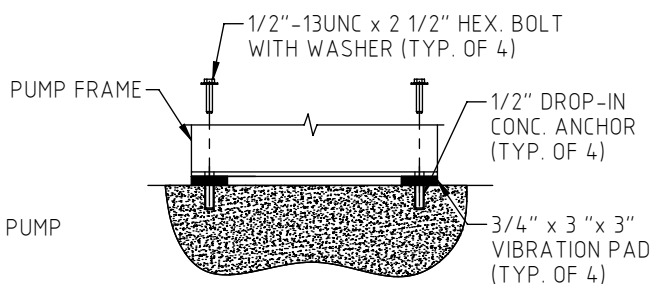
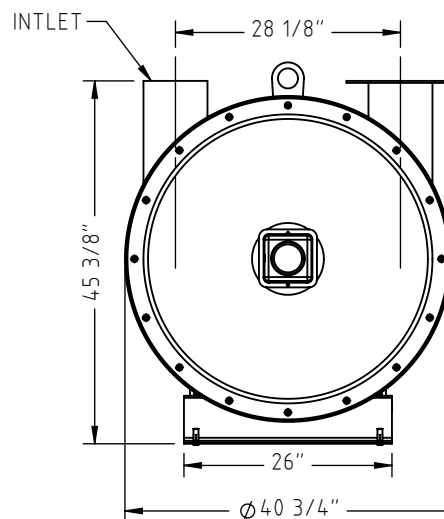
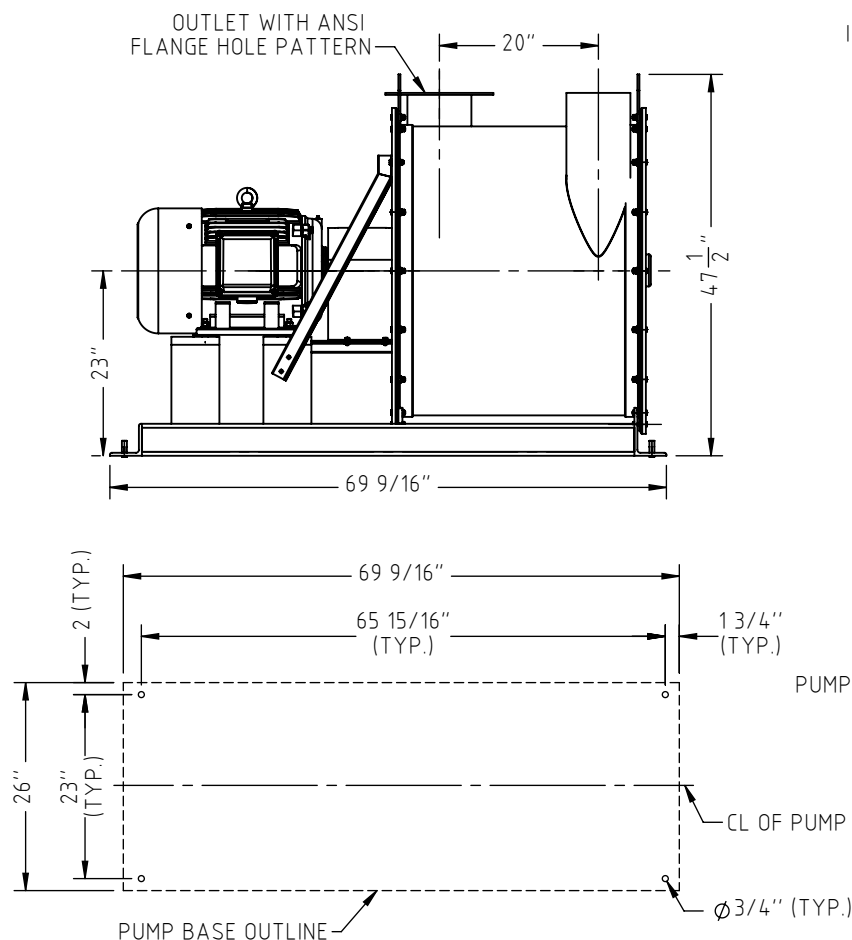
WWW.EUROVAC.COM

## PRODUCT SPECIFICATIONS

PRODUCT:  
50 HP MULTI-STAGE CENTRIFUGAL EXHAUSTER

PART NO.  
50HP-40E-07505036

DATE  
12/15/2018



SECTION DETAIL  
NOTE: DO NOT TIGHTEN BOLT. WASHER MUST  
BE ABLE TO SPIN FREELY AFTER INSTALLATION.

CATALOGUE NUMBER	POWER HP (KW)	MOTOR RPM	MAX VOLUME CFM	VACUUM IN Hg (IN Wg)	VOLT/PHASE/FREQ. FLA	NUMBER OF STAGES	INLET O.D. IN(mm)	OUTLET O.D. IN(mm)	APPROX. WT. lb (kg)	HEAT RATE (BTU/Hr)	DISTANCE (FT.)	SOUND LEVEL (dBA)
423B50	50 (36.8)	3600	1430	7.5 (102)	460/3/60 58A	4	8(200)	8(200)	1118 (507)	17060	3	89
					575/3/60 46A						10	79
											50	65
											100	59
											150	55

### NOTES:

1. ALL DIMENSIONS SHOWN ARE FOR REFERENCE PURPOSES ONLY, NOT FOR CONSTRUCTION USE.
2. HEIGHT OF UNIT DOES NOT INCLUDE VIBRATION ISOLATOR.
3. NO SPECIAL FOUNDATION IS REQUIRED FOR EXHAUSTERS; DO NOT FASTEN DOWN TO CONCRETE FLOOR.
4. STANDARD ROTATION IS CW WHEN VIEWED FROM MOTOR END.
5. INLET FURNISHED STANDARD WITH BUTTERFLY THROTTLING VALVE.
6. SPECIFICATIONS SUBJECT TO CHANGE WITHOUT NOTICE.

NOTE: ALL DIMENSIONS ARE IN INCHES.

DIMENSIONS AND DESIGN ARE SUBJECT TO CHANGE AT MANUFACTURER'S DISCRETION