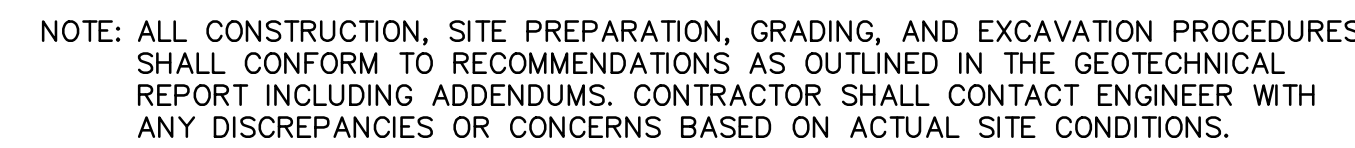
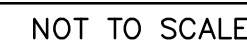
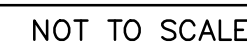


NOT TO SCALE



NOT TO SCALE

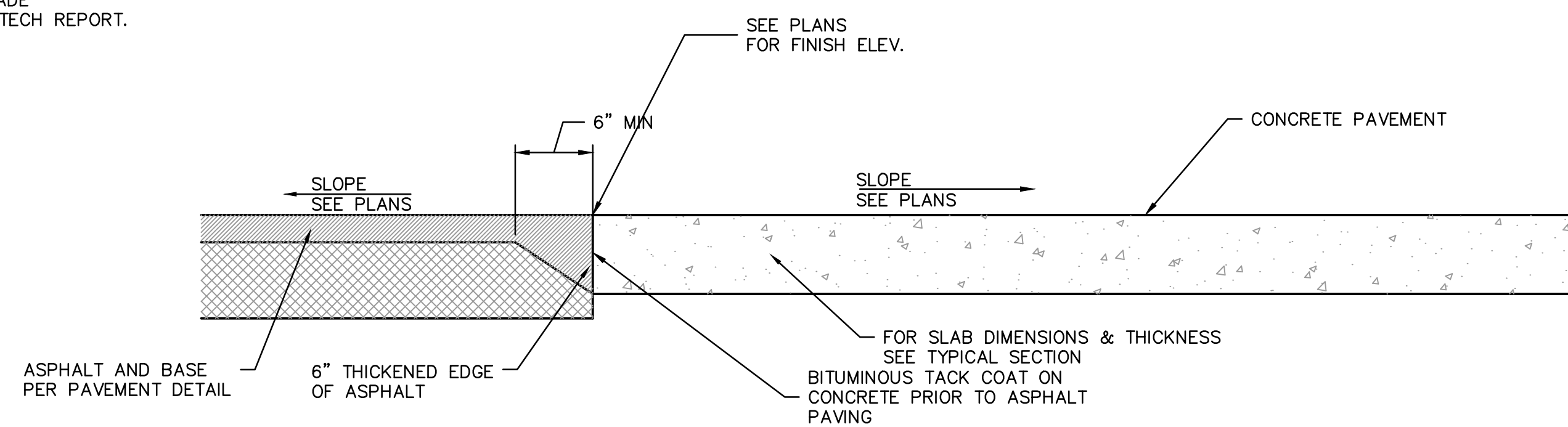


1. 5,000 PSI KCMMB CONCRETE SHALL BE USED FOR STRUCTURES WITH ORIFICE PLATE
2. STRUCTURES MAY BE PRE-CAST OR CAST IN PLACE AT THE CONTRACTOR'S OPTION. FOR PRE-CAST CONSTRUCTION CONTRACTOR SHALL SUBMIT SHOP DRAWINGS TO THE DESIGN ENGINEER, AND PROVIDE A COPY OF THE APPROVED SHOP DRAWINGS TO THE CITY.

1. 3/4" ISOLATION JOINTS WITH 3 (2'-#5 BAR) SMOOTH DOWELS SHALL BE PLACED AT RADIUS POINTS AND AT 150' INTERVALS. THESE DOWEL BARS SHALL BE GREASED AND WRAPPED ON ONE END WITH EXPANSION TUBES.
2. 3" DEEP CONTRACTION JOINTS SHALL BE INSTALLED AT APPROXIMATELY 10' INTERVALS. THE JOINTS SHALL PASS ACROSS THE ENTIRE CURB SECTION.
3. CONCRETE FILL SHALL HAVE UNIFORM AND SMOOTH FINISH.
4. KCMMB 4K CONCRETE SHALL BE USED FOR ALL CURBS.
5. ASPHALTIC CONCRETE SURFACE SHALL CONFORM TO STANDARD SPECIFICATIONS SECTION 220.5.
6. CURBS FOR NEW STREETS SHALL BE BUILT ON ASPHALT OR AGGREGATE BASE AS SHOWN IN TYPICAL SECTION DETAIL.
7. WHITE CURING COMPOUND MUST BE APPLIED UNIFORMLY TO THE CONCRETE SURFACE IMMEDIATELY AFTER FINAL FINISHING.
8. AGGREGATE BASE AND SUBGRADE PREPARATION SHALL EXTEND A MINIMUM ONE FOOT BEYOND THE BACK OF CURB



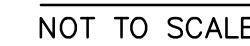
NOT TO SCALE



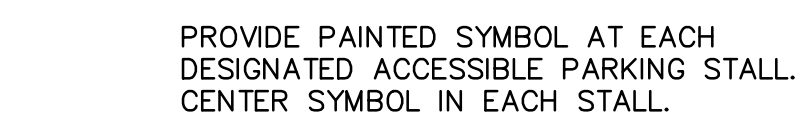
NOT TO SCALE



ACCESSIBLE PARKING SYMBOL
AND SIGNAGE SHALL COMPLY
WITH THE APPLICABLE
RECOMMENDATIONS OF THE
MANUAL OF UNIFORM TRAFFIC
CONTROL DEVICES (MUTCD).



1. SIGN TO BE PER LOCAL JURISDICTION REQUIREMENTS. VERIFY SIZE, SHAPE & VERBIAGE
2. PROVIDE SIGN AT EACH HANDICAPPED ACCESSIBLE PARKING STALL.



NOT TO SCALE