

# TM FIELDHOUSE

1600 SE HAMBLÉN ROAD  
LEE'S SUMMIT, MISSOURI 64081

## PERMIT SET

2 MAY 2023

COLLINS WEBB #: 22103

SHEET INDEX		
SHEET NUMBER	SHEET NAME	REV
GENERAL INFORMATION		
CS	COVER SHEET	
G001	GENERAL INFORMATION	06/21/2023
G002	ACCESSIBILITY GUIDELINES	
G003	LIFE SAFETY PLANS AND PROJECT INFO.	06/21/2023
G141	UL LISTINGS	06/21/2023
G500	GENERAL PROJECT SPECIFICATIONS	
G501	GENERAL PROJECT SPECIFICATIONS	06/21/2023
G502	GENERAL PROJECT SPECIFICATIONS	
STRUCTURAL		
S001	STRUCTURAL GENERAL NOTES	
S030	TYPICAL DETAILS - CONCRETE	
S031	TYPICAL DETAILS - CONCRETE	
S040	TYPICAL DETAILS - MASONRY	
S054	TYPICAL DETAILS - CFS & STEEL	
S100	FOUNDATION PLAN	06/21/2023
S101	MEZZANINE PLAN	
ARCHITECTURAL		
A101	1ST FLOOR & MEZZ. PLAN	06/21/2023
A102	ENLARGED PLANS AND DETAILS	06/21/2023
A104	ROOF PLAN	06/21/2023
A201	EXTERIOR ELEVATIONS	06/21/2023
A325	WALL SECTIONS	06/21/2023
A501	DOOR SCHEDULE AND DETAILS	06/21/2023
A606	RCP - 1ST FLOOR	06/21/2023
A901	FINISH FLOOR PLANS	06/21/2023

SHEET INDEX		
SHEET NUMBER	SHEET NAME	REV
MEP		
E101	ELECTRICAL NOTES, SYMBOLS & ABBREVIATIONS	
E102	ELECTRICAL DETAILS	
E103	ELECTRICAL SITE PLAN	
E201	PARTIAL POWER PLAN	
E202	PARTIAL POWER PLAN	
E203	ENLARGED POWER PLANS	06/21/2023
E301	PARTIAL LIGHTING PLAN	
E302	PARTIAL LIGHTING PLAN	
E303	ENLARGED LIGHTING PLANS	06/21/2023
E401	ELECTRICAL ONE-LINE DIAGRAM & SCHEDULES	06/21/2023
E402	ELECTRICAL SCHEDULES	06/21/2023
E403	ELECTRICAL LIGHTING SCHEDULES	
E501	ELECTRICAL SPECIFICATIONS	
E502	ELECTRICAL SPECIFICATIONS	
M101	MECHANICAL NOTES, SYMBOLS & ABBREVIATIONS	
M201	PARTIAL MECHANICAL PLAN	06/21/2023
M202	PARTIAL MECHANICAL PLAN	06/21/2023
M203	ENLARGED MECHANICAL PLANS	06/21/2023
M301	MECHANICAL SCHEDULES AND DETAILS	06/21/2023
M401	MECHANICAL SPECIFICATIONS	
M501	HOOD AND FAN DRAWINGS	06/21/2023
P101	PLUMBING NOTES, SYMBOLS AND ABBREVIATIONS	
P102	PLUMBING DETAILS AND SCHEDULES	
P201	PLUMBING OVERALL PLAN	06/21/2023
P301	PLUMBING WASTE AND VENT PLAN	06/21/2023
P302	PLUMBING WATER AND GAS PLAN	06/21/2023
P401	PLUMBING RISERS	06/21/2023
P402	PLUMBING RISERS	06/21/2023
P501	PLUMBING SPECIFICATIONS	



### OWNER

TAILOR MADE EXTERIORS  
1610 SE HAMBLÉN ROAD  
LEE'S SUMMIT, MO 64081  
P: 816.347.8328  
www.TailorMadeExteriors.com

### ARCHITECT

COLLINS | WEBB ARCHITECTURE  
307B SW MARKET STREET  
LEE'S SUMMIT, MISSOURI 64063  
P: 816.249.2270  
www.collinsandwebb.com

### CIVIL ENGINEER

ENGINEERING SOLUTIONS  
50 SE 30TH STREET  
LEE'S SUMMIT, MO 64082  
P: 816.623.9888  
www.es-kc.com

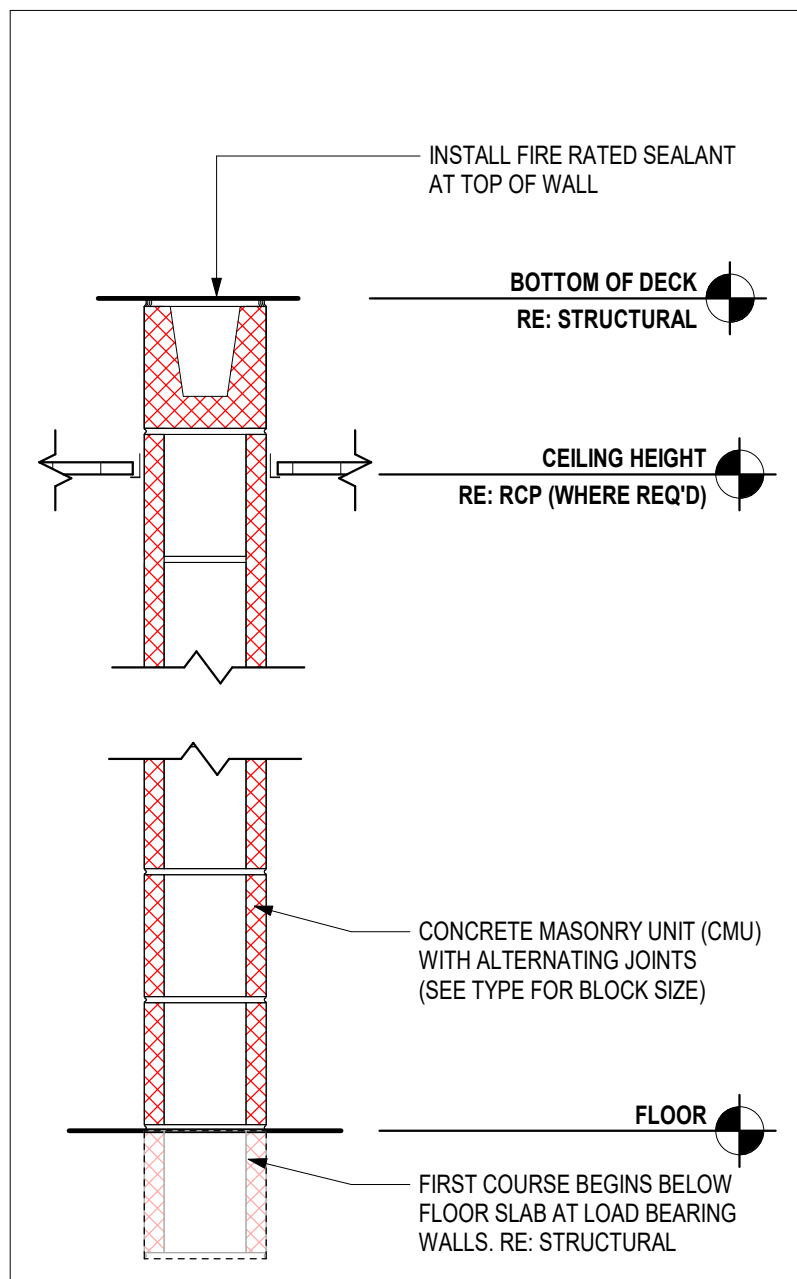
### STRUCTURAL ENGINEER

STAND STRUCTURAL ENGINEERING INC.  
8234 ROBINSON ST.  
OVERLAND PARK, KS 66204  
P: 913.214.2169  
www.stand-sei.com

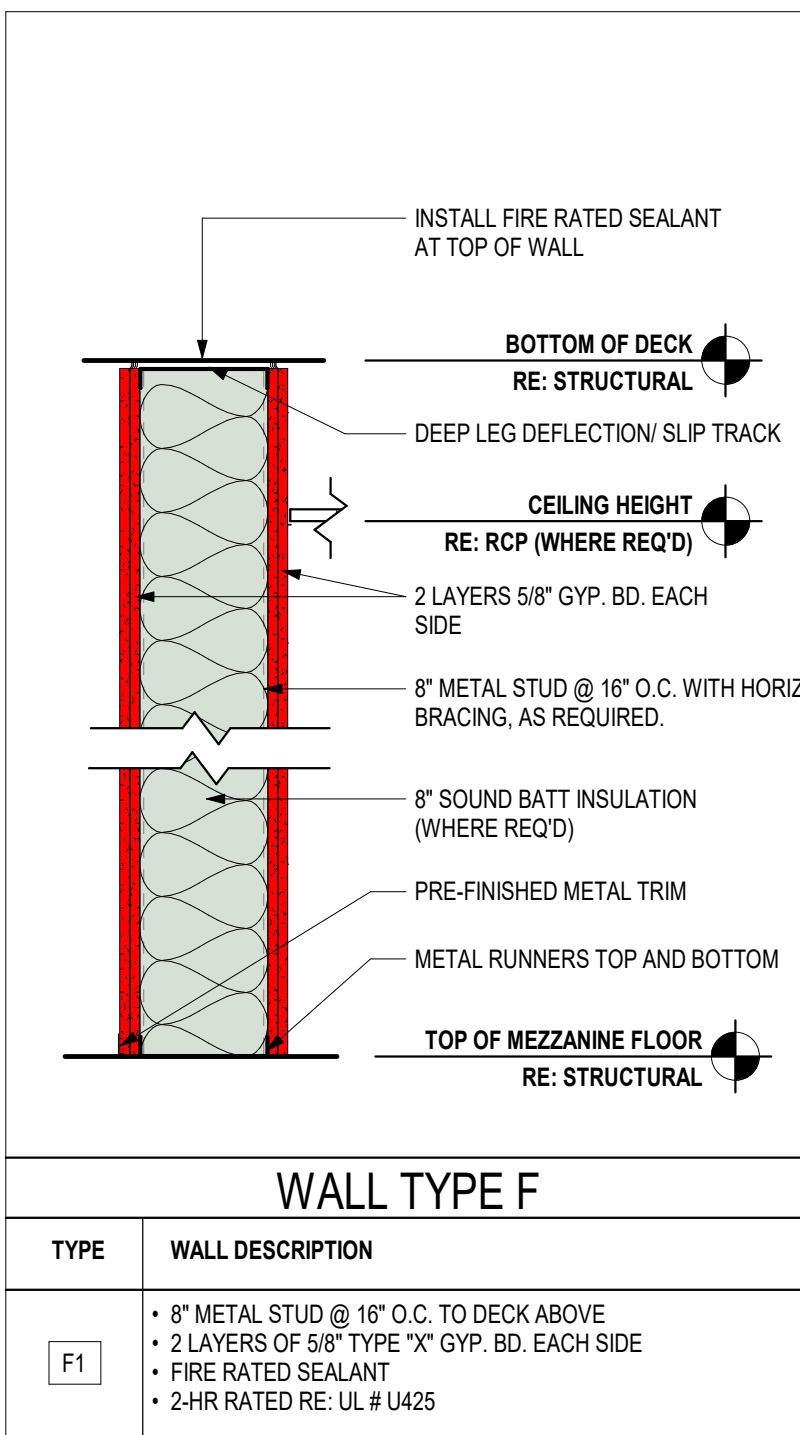
### MEP ENGINEER

ENGINEERED BUILDING SOLUTIONS  
P.O. BOX #11101  
OVERLAND PARK, KS 66207  
P: 913.735.5654  
www.EBSolutionsKC.com

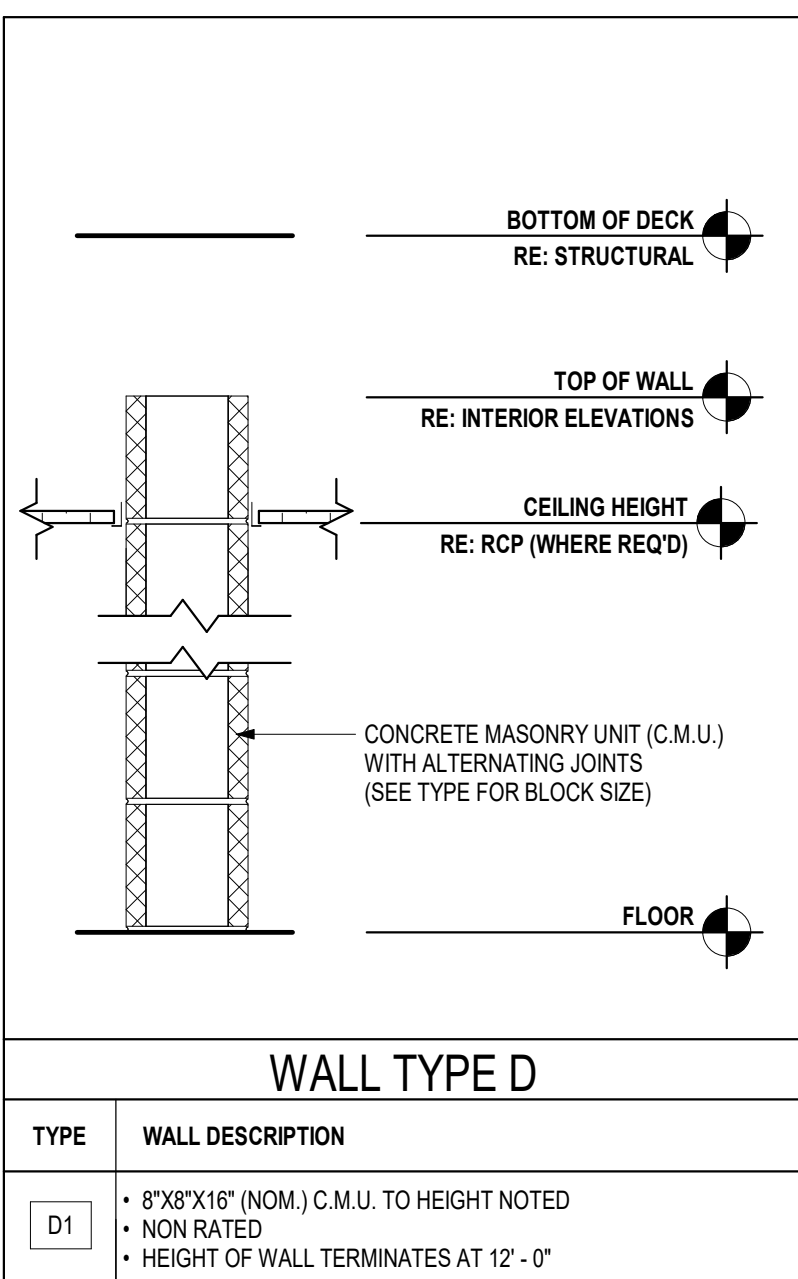




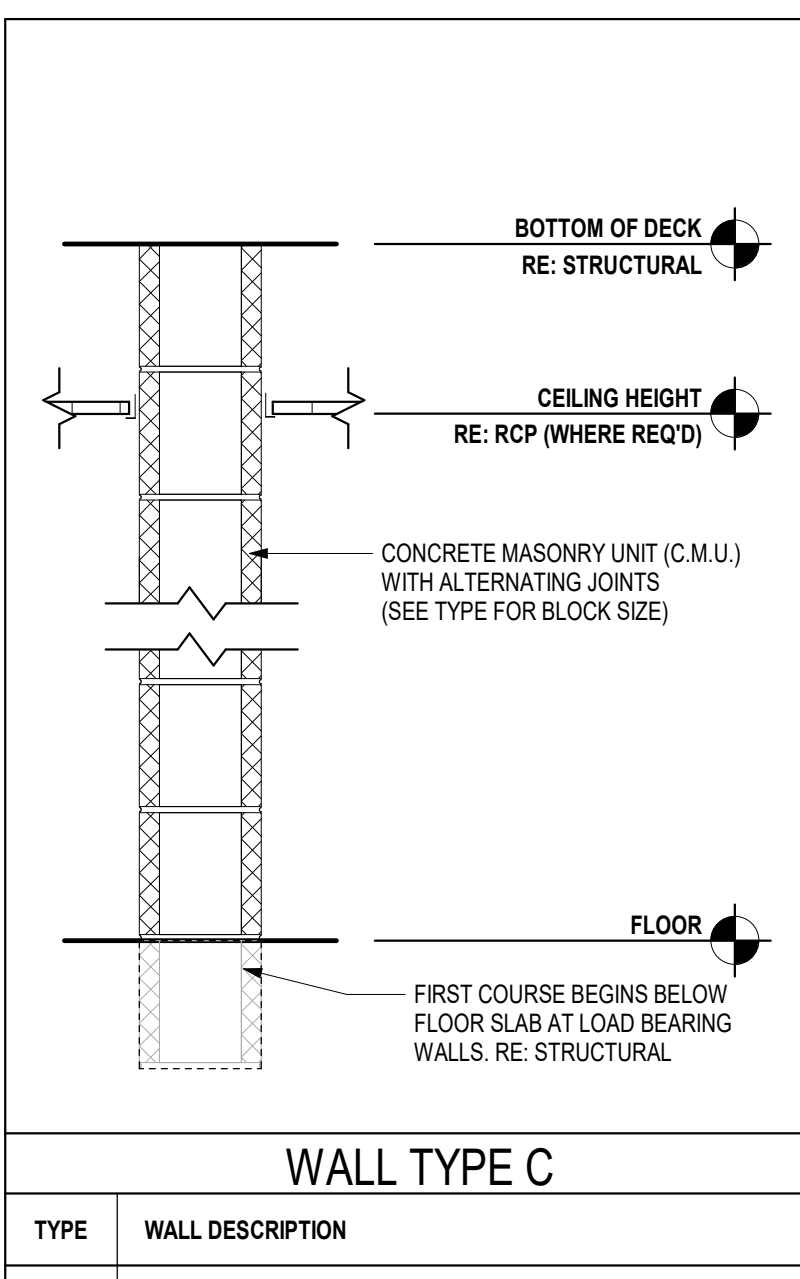
TYPE	WALL DESCRIPTION
G1	<ul style="list-style-type: none"> <li>8"x8"x16" (NOM.) C.M.U. TO DECK ABOVE. PROVIDE BOND BEAMS AT BOTTOM TWO COURSES AND TOP COURSE</li> <li>ALL CELLS GROUTED SOLID</li> <li>FIRESTOPPING AT TOP OF WALL TO SEAL FLOOR SLAB</li> <li>STEEL CLIP ANGLES EACH SIDE OF WALL</li> <li>ALL HOLLOW METAL FRAMES GROUTED SOLID</li> <li>FIRE-RATED SEALANT</li> <li>2-HR RATED RE: UL # U905</li> </ul>



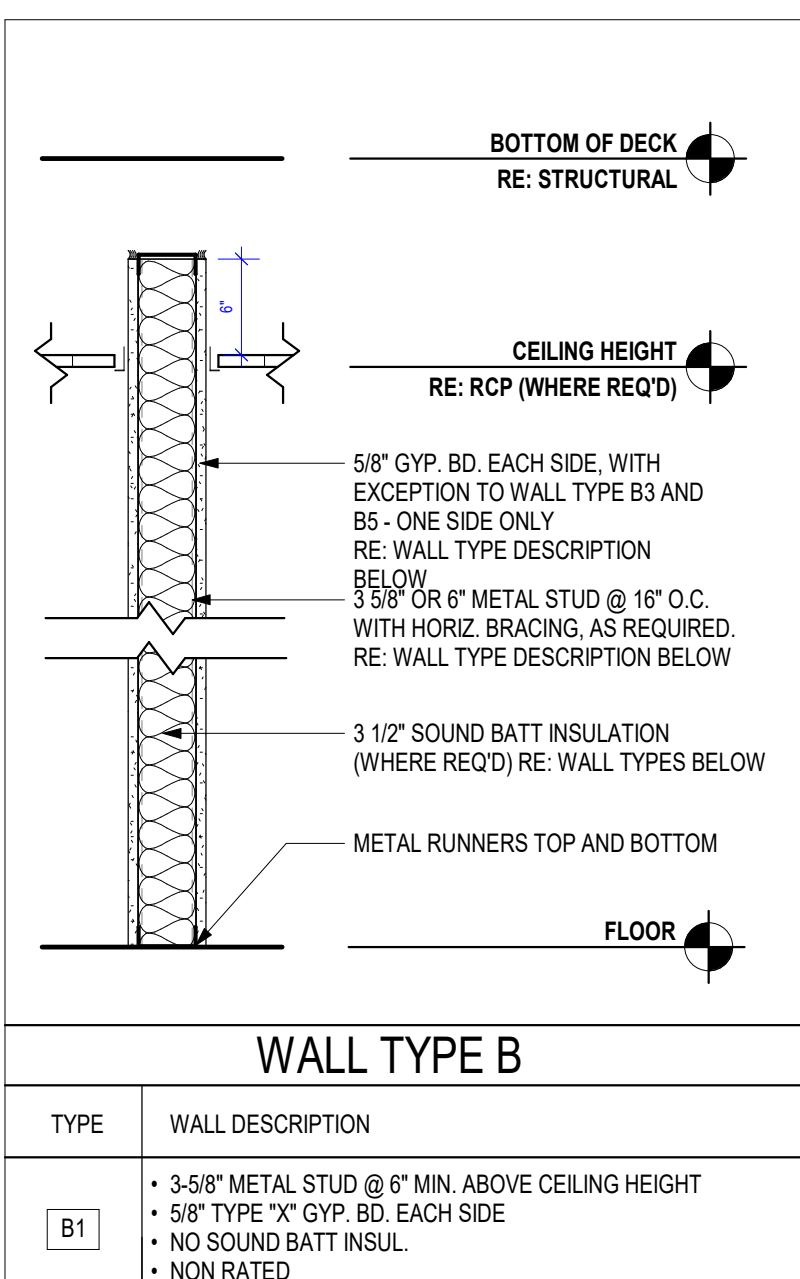
TYPE	WALL DESCRIPTION
F1	<ul style="list-style-type: none"> <li>8" METAL STUD @ 16" O.C. TO DECK ABOVE</li> <li>2 LAYERS OF 5/8" TYPE "X" GYP. BD. EACH SIDE</li> <li>FIRE RATED SEALANT</li> <li>2-HR RATED RE: UL # U425</li> </ul>



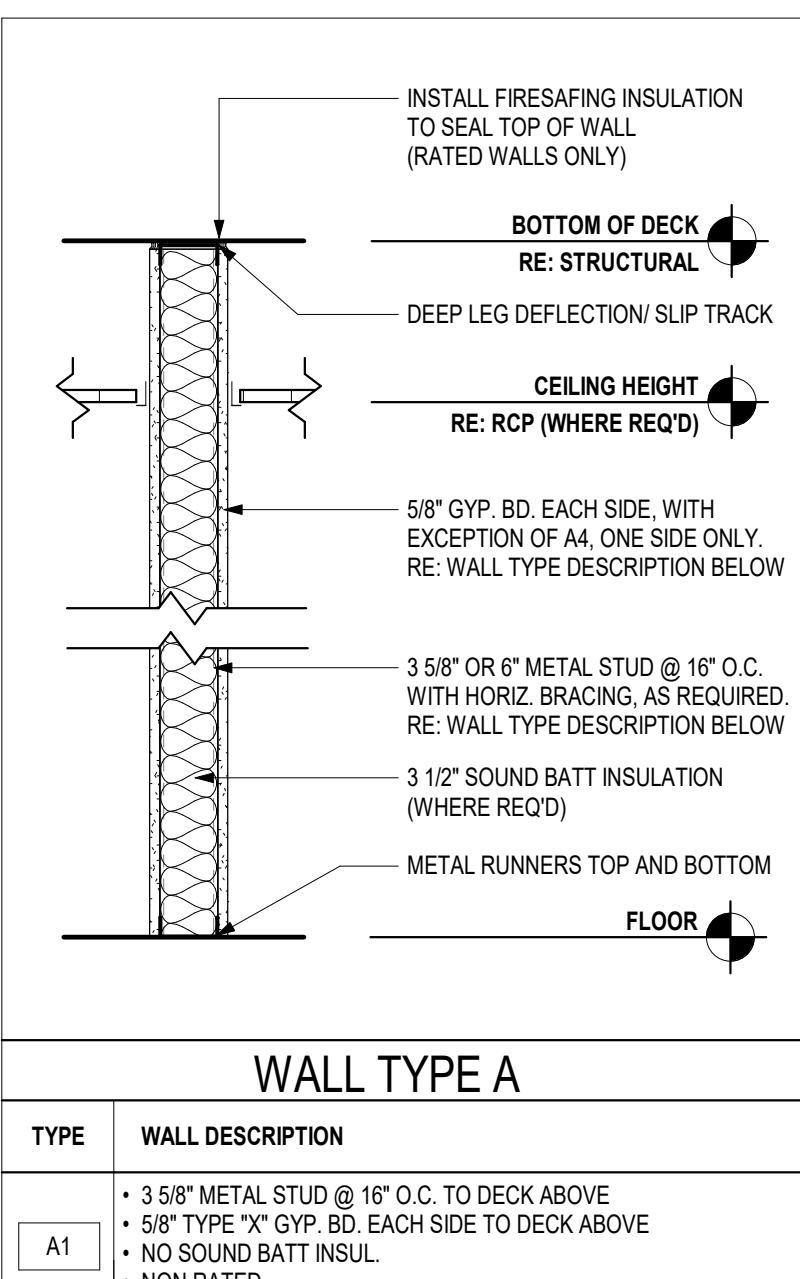
TYPE	WALL DESCRIPTION
D1	<ul style="list-style-type: none"> <li>8"x8"x16" (NOM.) C.M.U. TO HEIGHT NOTED</li> <li>NON RATED</li> <li>HEIGHT OF WALL TERMINATES AT 12' - 0"</li> </ul>



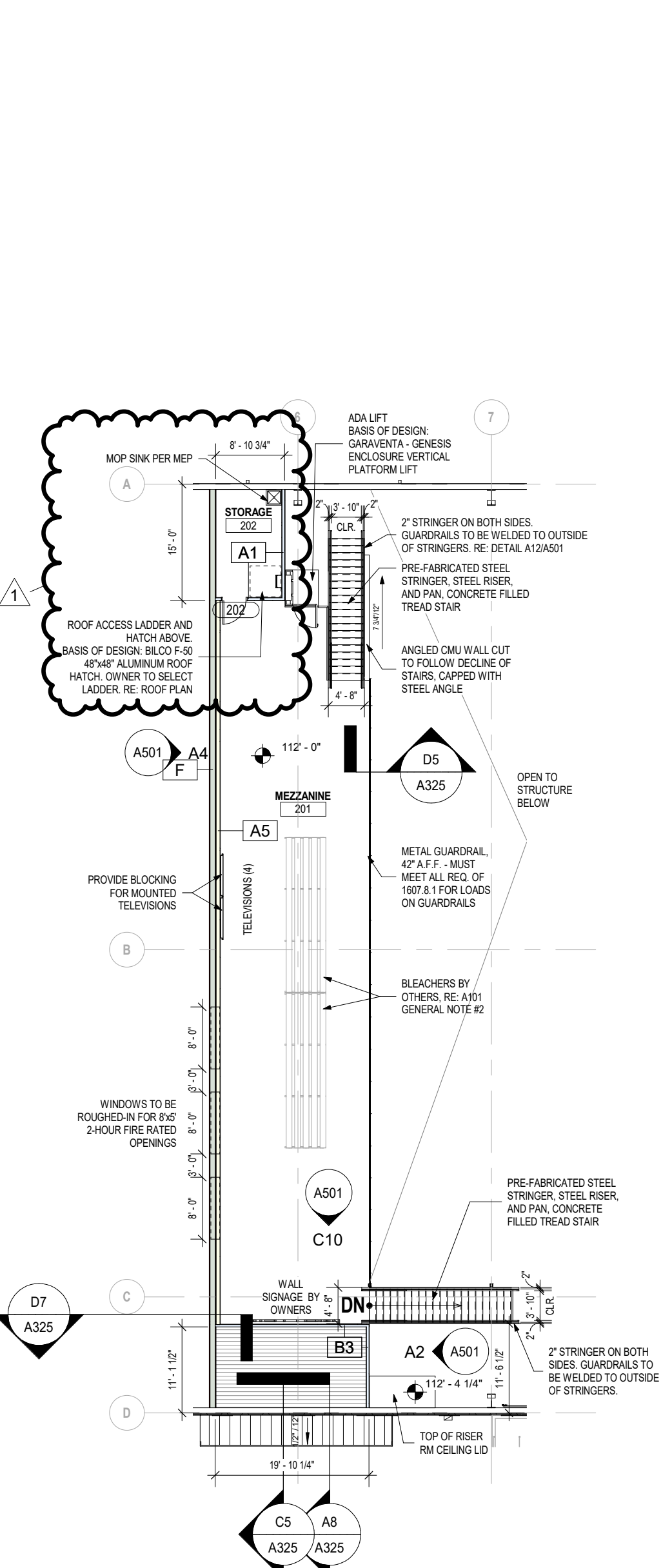
TYPE	WALL DESCRIPTION
C1	<ul style="list-style-type: none"> <li>6"x8"x16" (NOM.) C.M.U. TO DECK ABOVE</li> <li>NON RATED</li> </ul>
C2	<ul style="list-style-type: none"> <li>8"x8"x16" (NOM.) C.M.U. TO DECK ABOVE</li> <li>NON RATED</li> </ul>



TYPE	WALL DESCRIPTION
B1	<ul style="list-style-type: none"> <li>3/5" METAL STUD @ 8" MIN. ABOVE CEILING HEIGHT</li> <li>5/8" TYPE "X" GYP. BD. EACH SIDE</li> <li>NO SOUND BATT INSUL.</li> <li>NON RATED</li> </ul>
B2	<ul style="list-style-type: none"> <li>3/5" METAL STUD @ 8" ABOVE CEILING HEIGHT</li> <li>5/8" TYPE "X" GYP. BD. EACH SIDE</li> <li>NO SOUND BATT INSUL.</li> <li>NON RATED</li> </ul>
B3	<ul style="list-style-type: none"> <li>3/5" METAL STUD @ 8" ABOVE CEILING HEIGHT</li> <li>5/8" TYPE "X" GYP. BD. ONE SIDE (ROOM SIDE)</li> <li>NO SOUND BATT INSUL.</li> <li>NON RATED</li> </ul>
B4	<ul style="list-style-type: none"> <li>6" METAL STUD @ 8" ABOVE CEILING HEIGHT</li> <li>5/8" TYPE "X" GYP. BD. EACH SIDE</li> <li>NO SOUND BATT INSUL.</li> <li>NON RATED</li> </ul>
B5	<ul style="list-style-type: none"> <li>6" METAL STUD @ 8" ABOVE CEILING HEIGHT</li> <li>5/8" TYPE "X" GYP. BD. ONE SIDE (ROOM SIDE)</li> <li>NO SOUND BATT INSUL.</li> <li>NON RATED</li> </ul>



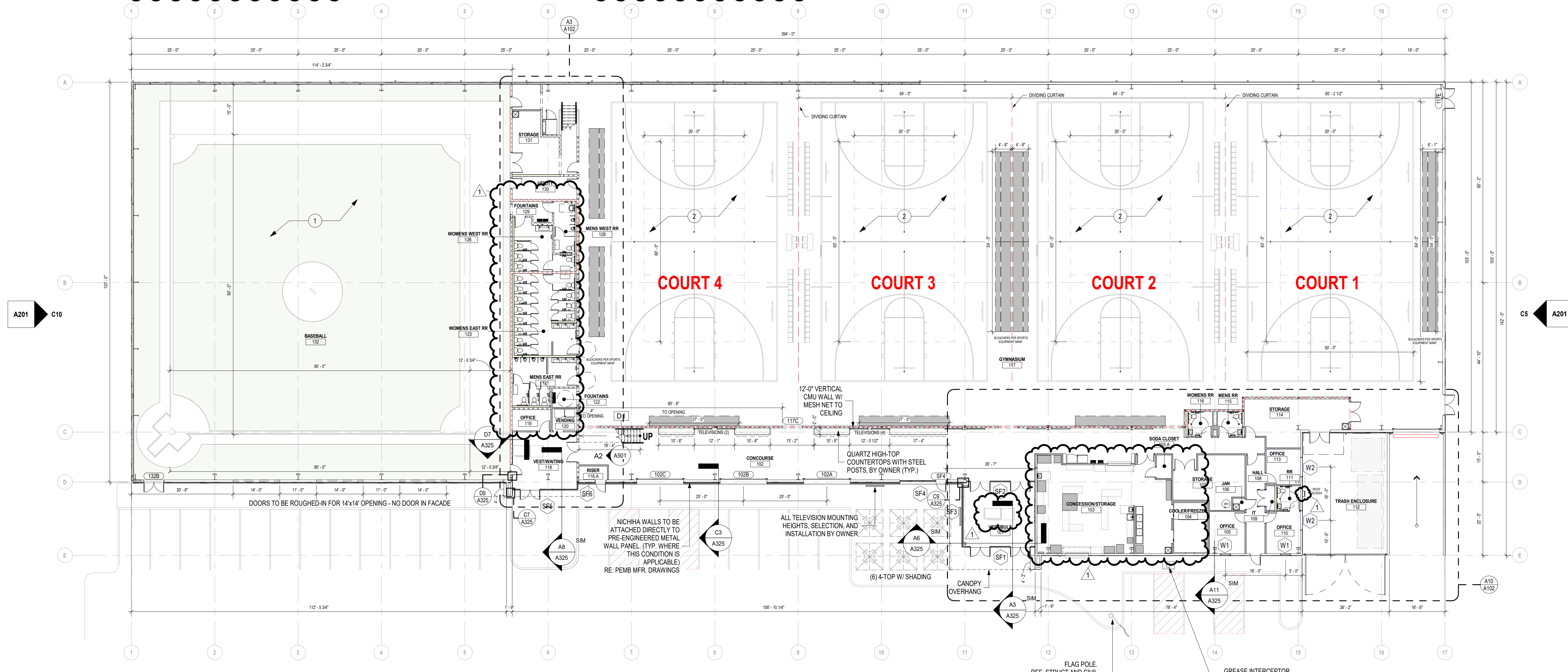
TYPE	WALL DESCRIPTION
A1	<ul style="list-style-type: none"> <li>3/5" METAL STUD @ 16" O.C. TO DECK ABOVE</li> <li>5/8" TYPE "X" GYP. BD. EACH SIDE TO DECK ABOVE</li> <li>NO SOUND BATT INSUL.</li> <li>NON RATED</li> </ul>
A2	<ul style="list-style-type: none"> <li>3/5" METAL STUD @ 16" O.C. TO DECK ABOVE</li> <li>5/8" TYPE "X" GYP. BD. EACH SIDE TO DECK ABOVE</li> <li>NO SOUND BATT INSUL.</li> <li>NON RATED</li> </ul>
A3	<ul style="list-style-type: none"> <li>3/5" METAL STUD @ 16" O.C. TO DECK ABOVE</li> <li>5/8" TYPE "X" GYP. BD. ONE SIDE (ROOM SIDE)</li> <li>NO SOUND BATT INSUL.</li> <li>NON RATED</li> </ul>
A4	<ul style="list-style-type: none"> <li>6" METAL STUD @ 16" O.C. TO DECK ABOVE</li> <li>5/8" TYPE "X" GYP. BD. EACH SIDE TO DECK ABOVE</li> <li>NO SOUND BATT INSUL.</li> <li>NON RATED</li> </ul>
A5	<ul style="list-style-type: none"> <li>6" METAL STUD @ 16" O.C. TO DECK ABOVE</li> <li>5/8" TYPE "X" GYP. BD. ONE SIDE (ROOM SIDE)</li> <li>NO SOUND BATT INSUL.</li> <li>NON RATED</li> </ul>



- GENERAL NOTES:**
- FLOOR PLANS**
- SEE GENERAL ARCHITECTURAL SHEETS FOR ADDITIONAL NOTES AND DETAILS THAT ARE APPLICABLE.
  - ARCHITECTURAL ELEVATION 100'-0"
  - DIMENSIONS SHOWN ON THE FLOOR PLAN ARE TO THE FACE OF STUD (FOS), FACE OF CONCRETE WALLS (FCO), AND COLUMN GRID LINES, UNLESS NOTED OR SHOWN OTHERWISE.
  - NOTE: WALL THICKNESSES ARE ACTUAL DIMENSIONS AND PER WALL TYPES. SEE GENERAL SHEETS.
  - DOOR OPENINGS NOT LOCATED BY DIMENSION SHALL BE CENTERED IN WALL, SHOWN OR LOCATED 4 INCHES FROM FINISH WALL TO HINGE SIDE OF THE DOOR. ALWAYS ALLOWING A MINIMUM OF 1" FROM THE FULL SIDE (STRIKE SIDE) OF THE DOOR TO THE INTERSECTING WALL, OR OTHER PROTRUDING OBJECTS.
  - NOT USED
  - PROVIDE FINISH LEVELS AS DESCRIBED:
    - LEVEL 1: FIRE RATED WALL AREAS ABOVE FINISHED CEILING, WHETHER OR NOT ACCESSIBLE IN THE COMPLETED CONSTRUCTION.
    - LEVEL 2: AREAS WHERE SETTING TYPE COMPOUND FOR WATER RESISTANT GYPSUM BACKER OR FIBER REINFORCED WALL PANELS ARE USED.
      - ALL OPEN TO PLENUM SPACES ABOVE CEILINGS.
      - OPEN TO STRUCTURE SPACES WHERE PAINTED BLACK
      - AREAS IN MECHANICAL, ELECTRICAL AND STORAGE ROOMS.
    - LEVEL 3: PUBLIC CIRCULATION CORRIDORS WHERE ROOM SIDE WALLS HAVE WALLCOVERING OR WOOD SLAT WALL TREATMENTS.
      - OPEN TO STRUCTURE SPACES WHERE PAINTED OTHER THAN BLACK
    - LEVEL 4: CIRCULATION CORRIDORS WHERE ROOM SIDE WALLS AND/OR CEILINGS HAVE PAINTED SURFACES.
    - LEVEL 5: PUBLIC LOBBIES AND LOUNGE AREAS WHERE WALLS AND/OR CEILINGS HAVE PAINTED OR WALL COVERINGS INSTALLED ON SURFACES WITHIN LOUNGE AREAS.
  - RE: FINISH LEGEND, FINISH SCHEDULE AND SPECIFICATIONS FOR DOOR AND DOOR FRAME FINISHES.
  - STAIR ENCLOSURES, SHAFT WALLS, EXIT PASSAGE WALLS AND EXTERIOR WALLS TO BE COORDINATED FOR PHASE OF WORK PER MATRIX AND PROJECT SCOPING.
  - MAINTAIN AND PROTECT EXISTING EXPANSION JOINTS DURING CONSTRUCTION. PATCH/REPAIR/REPLACE TO MATCH EXISTING FINISHES AS REQUIRED ON THE SHELL PORTION OF PROJECT.

1 GENERAL NOTE (TYP.): BASKETBALL COURT FLOORING, BASKETBALL GOALS, SCOREBOARDS, MESH NETS, WALL PADS, BLEACHERS AND VOLLEYBALL NETS BY OTHERS. INSTALLED PER SPORTS EQUIPMENT MANF. REQ. PEMB SUPPLIER TO PROVIDE SUPPORT BEAMS AND DESIGN FRAMES FOR EQUIP. CONCRETE CONTRACTOR SHALL COORDINATE FLOOR INSERTS WITH EQUIPMENT VENDOR PRIOR TO FLATWORK PLACEMENT. RE: PEMB MFR. FOR REQ. EQUIP. SUPPORT. RE: SPOONBALL SPORTS FOR LOCATIONS, FLOORING AND EQUIP. WEIGHTS. OWNER TO COORDINATE WITH VENDOR ON ALL SPORTING EQUIP.

2 GENERAL NOTE (TYP.): BASKETBALL COURT FLOORING, BASKETBALL GOALS, SCOREBOARDS, MESH NETS, WALL PADS, BLEACHERS AND VOLLEYBALL NETS BY OTHERS. INSTALLED PER SPORTS EQUIPMENT MANF. REQ. PEMB SUPPLIER TO PROVIDE SUPPORT BEAMS AND DESIGN FRAMES FOR EQUIP. CONCRETE CONTRACTOR SHALL COORDINATE FLOOR INSERTS WITH EQUIPMENT VENDOR PRIOR TO FLATWORK PLACEMENT. RE: PEMB MFR. FOR REQ. EQUIP. SUPPORT. RE: SPOONBALL SPORTS FOR LOCATIONS, FLOORING AND EQUIP. WEIGHTS. OWNER TO COORDINATE WITH VENDOR ON ALL SPORTING EQUIP.



A10 1ST FLOOR PLAN  
1/16" = 1'-0"

**TM FIELDHOUSE**  
1600 SE HAMBLEN ROAD  
LEE'S SUMMIT, MISSOURI 64081

COPYRIGHT © BY  
COLLINS WEBB  
ARCHITECTURE, LLC

REVISION DATES:

1 CITY COMMENTS	06/21/2023
-----------------	------------

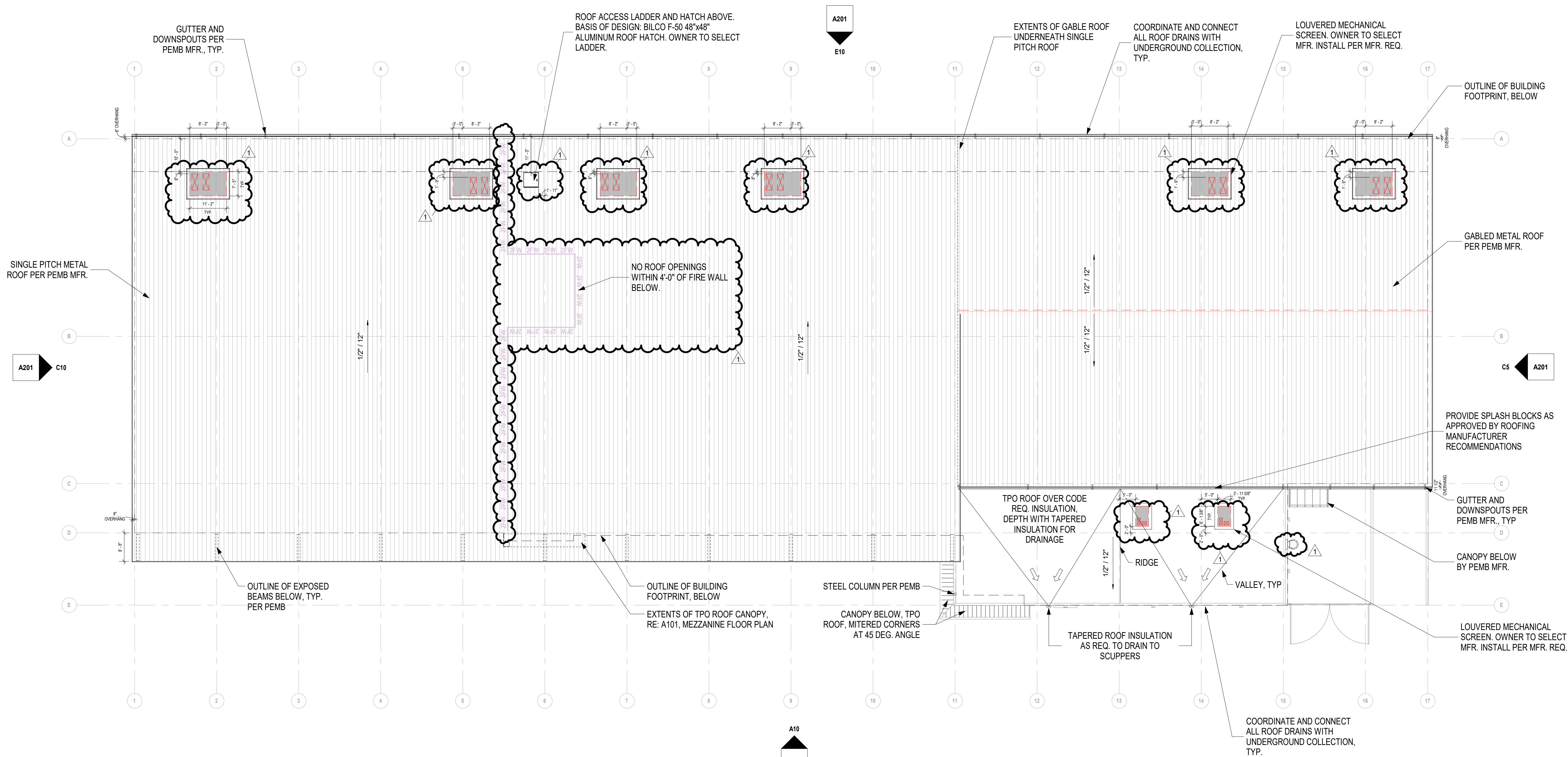
PROFESSIONAL SEAL

A101

ISSUE DATE: 2 MAY 2023  
COLLINS WEBB # 22103

1ST FLOOR & MEZZ. PLAN





A10 ROOF PLAN  
1/16" = 1'-0"

GENERAL NOTES:  
ROOF PLANS

1. RE: SHEET G001 FOR ADDITIONAL GENERAL NOTES THAT ARE APPLICABLE.
2. DIMENSIONS SHOWN ON THE ROOF PLAN ARE TO THE FACE OF EXTERIOR WALL, FACE OF MASONRY (FOM), FACE OF CONCRETE WALLS (FCW), AND COLUMN GRID LINES, UNLESS NOTED OR SHOWN OTHERWISE.
3. PROVIDE 1/2" FT. TAPERED INSULATION AT ALL ROOF CURBS AND AT EQUIPMENT WHICH EXCEEDS 18 INCHES IN WIDTH.

ROOF PLAN LEGEND

- SLOPE DIRECTION
- TAPERED INSULATION CRICKET OVERBUILD
- ROOF WALKING PAD
- ROOF DRAIN

TM FIELDHOUSE

1600 SE HAMBLEN ROAD  
LEE'S SUMMIT, MISSOURI 64081

COPYRIGHT © BY  
COLLINS WEBB  
ARCHITECTURE, LLC

REVISION DATES:

1 CITY COMMENTS 06/21/2023



PROFESSIONAL SEAL

A104

ISSUE DATE: 2 MAY 2023  
COLLINS WEBB # 22103

ROOF PLAN



307B SW Market St., Lee's Summit, Missouri 64003 | 816.249.2270 | www.collinswebb.com

PERMIT SET



