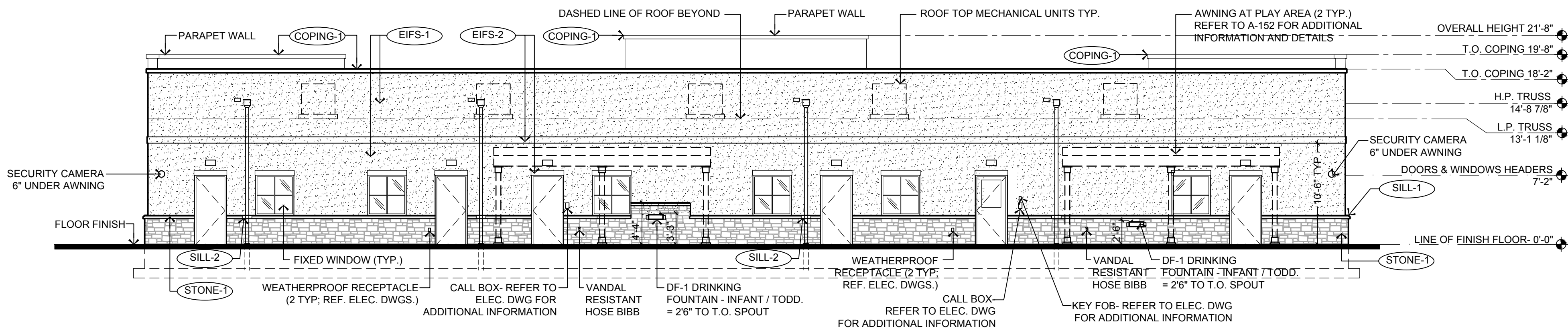
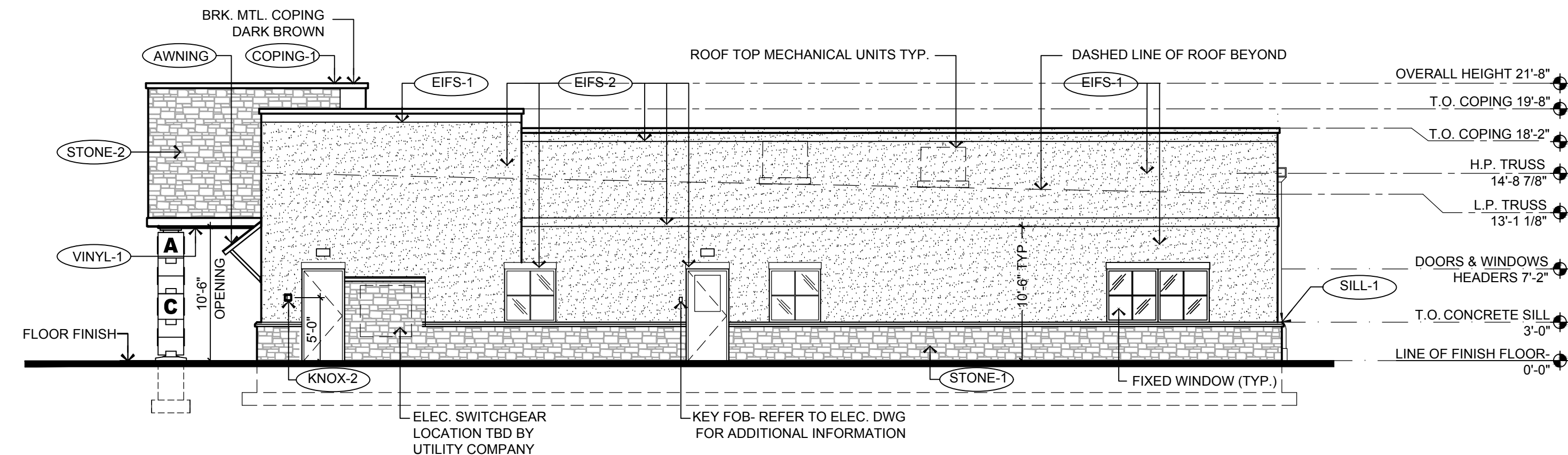


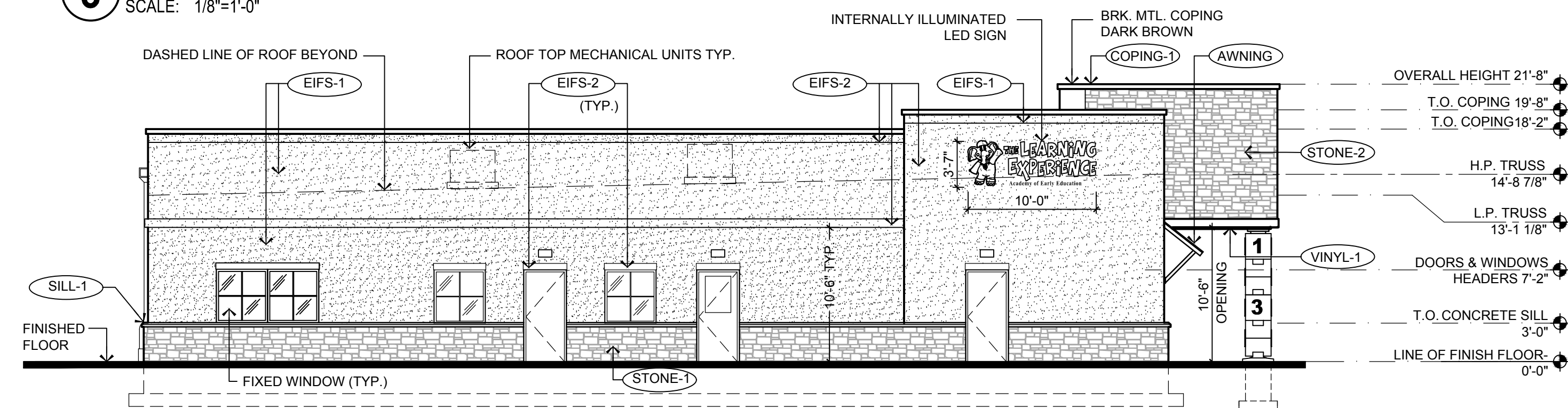
1 EAST ELEVATION
SCALE: 1/8"=1'-0"



2 WEST ELEVATION
SCALE: 1/8"=1'-0"



3 NORTH E ELEVATION
SCALE: 1/8"=1'-0"



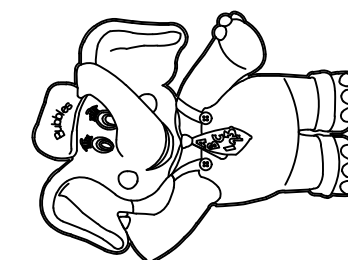
4 SOUTH ELEVATION
SCALE: 1/8"=1'-0"

1. CONTRACTOR SHALL SUPERVISE AND DIRECT THE WORK USING THE CONTRACTOR'S BEST SKILL AND ATTENTION. THE CONTRACTOR SHALL BE SOLELY RESPONSIBLE AND HAVE CONTROL OVER CONSTRUCTION MEANS, METHODS, TECHNIQUES, SEQUENCE, AND JOB SITE SAFETY.
2. GC MUST PROVIDE & INSTALL ALL PRODUCTS PER PLANS. ONLY SUBSTITUTED PRODUCTS NEED TO BE SUBMITTED TO THE ARCHITECT FOR APPROVAL. UNAPPROVED SUBSTITUTIONS WILL BE REPLACED AT THE EXPENSE OF THE GC.
3. VERBAL REPRESENTATION HAS NO VALUE AND ALL REQUESTS TO CHANGE ANY PRODUCTS OR SPECIFICATIONS PER PLANS, MUST BE SUBMITTED IN WRITING TO THE ARCHITECT & TLE FOR APPROVAL.



Jarmel Kizel
ARCHITECTS AND ENGINEERS INC.
42 OKNER PARKWAY
LIVINGSTON, NEW JERSEY 07039
TEL: 973-994-0669
FAX: 973-994-4069
www.jarmelkizel.com
Architecture
Engineering
Interior Design
Implementation Services

THE LEARNING
EXPERIENCE
ACADEMY OF
EARLY EDUCATION
ARBORWALK WEST
LEE'S SUMMIT, MISSOURI



ISSUE

NO.	DATE	DESCRIPTION	INT.
1	06-02-23	FOR TLE REVIEW	MBJ
2	06-14-23	FOR PERMIT	MBJ

REVISION

NO.	DATE	DESCRIPTION	INT.

PROFESSIONAL CERTIFICATION

MATTHEW B. JARMEL, AIA, MBA
LICENSE NUMBER: A2017014316

Project Number:

TLEMO22-164

Scale:

AS NOTED

Drawn By:

Approved By:

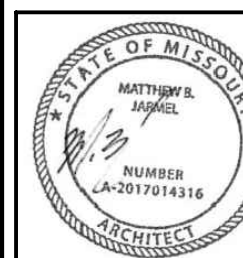
MBJ

Drawing Name:

EXTERIOR ELEVATIONS

Drawing Number:

A-051



EXTERIOR MATERIAL SCHEDULE			
LABEL	MANUFACTURER	SIZE / TYPE	FINISH / COLOR
STOREFRONT	KAWNEER	TRIFAB 451T / 350 PER DOOR SCHEDULE	BONE WHITE
DOOR	-	PER DOOR SCHEDULE	FACTORY PRIMED
FIXED WINDOW	PLY GEM	SILVER LINE V1 SERIES PER WINDOW SCHEDULE	WHITE
STONE-1	BUECHEL STONE CORP.	5" FULL DEPTH STONE	CHILTON TAILORED BLEND
STONE-2	BUECHEL STONE CORP.	STONE VENEER	CHILTON TAILORED BLEND
SILL-1	MODERN PRECAST	3 3/4"x6"W W/ 2" FLAT W/ 1/4" DRIP EDGE	REGULAR (LIGHT GREY)
SILL-2	MODERN PRECAST	CUSTOM SILL 3 3/4"x4"W W/ 2" FLAT REF. DTL. 6/A-032	REGULAR (LIGHT GREY)
EIFS-1	DRYVIT	-	SAND PEBBLE FINISH COLOR: OYSTER SHELL
EIFS-2	DRYVIT	-	SAND PEBBLE FINISH COLOR: SANDLEWOOD BEIGE
GUTTER-1	-	6" ALUMINUM TYPE 'K' W/ LEAF SCREEN AND 6" LEADERS	MATCH FRIEZE BOARD
VINYL-1	ROYAL BUILDING PRODUCTS	COLORSCAPES TRIPLE 4 PERFORATED SOFFIT NOM. THICKNESS 0.042"	WHITE (REF. NOTE 2 BELOW)
AWNING	-	CUSTOM ALUMINUM	AWARD BLUE (PAC-CLAD)
COPING-1	FABRAL (OR EQUAL)	BREAK METAL	DARK BRONZE
KNOX-1	KNOX BOX	3200 SERIES W/ RECESSED MOUNT FLANGE, HINGE DOOR, & TAMPER SWITCH	DARK BRONZE (REF. NOTE 2 BELOW)
FINISH SCHEDULE NOTES: 1. G.C. SHALL VERIFY KNOX BOX MODEL(S) AND LOCATION(S) WITH AUTHORITY HAVING JURISDICTION PRIOR TO ORDERING AND INSTALLATION. 2. G.C. SHALL ENSURE ALL EXTERIOR FINISHES ARE INSTALLED AND FINISHED IN COMPLIANCE WITH MANUFACTURERS' WARRANTY REQUIREMENTS.			