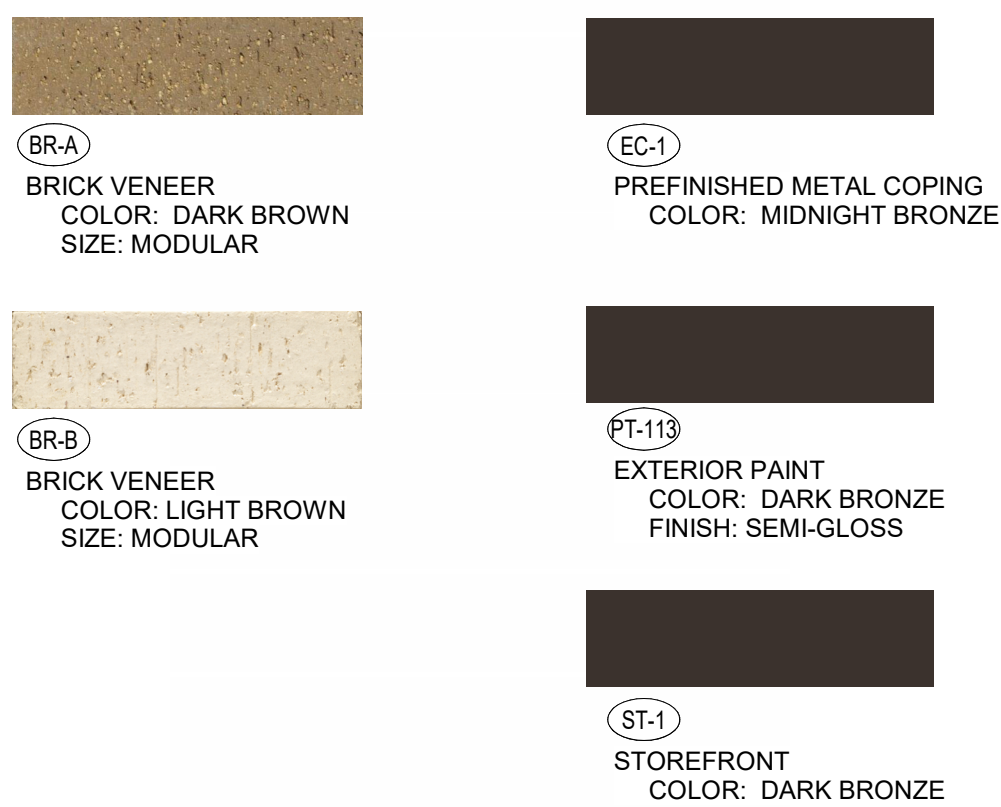


**EXTERIOR FINISHES**



PERSPECTIVE VIEW



PERSPECTIVE VIEW



PERSPECTIVE VIEW



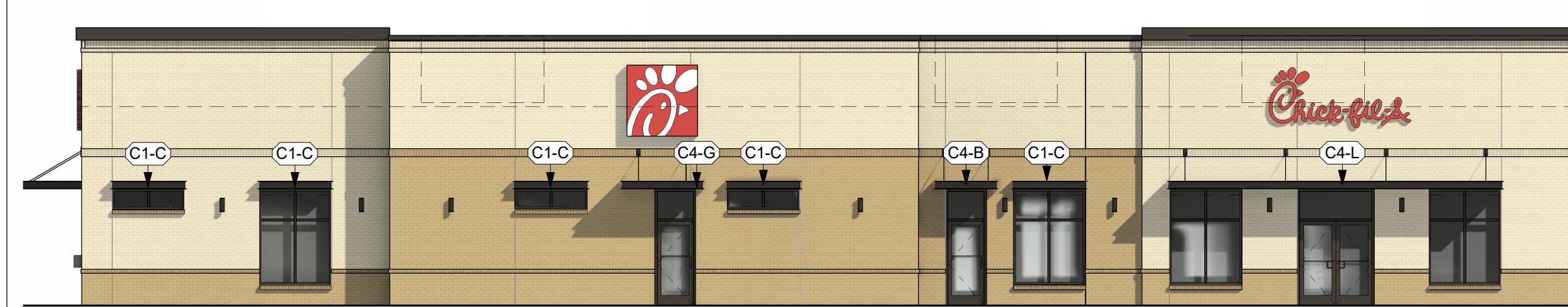
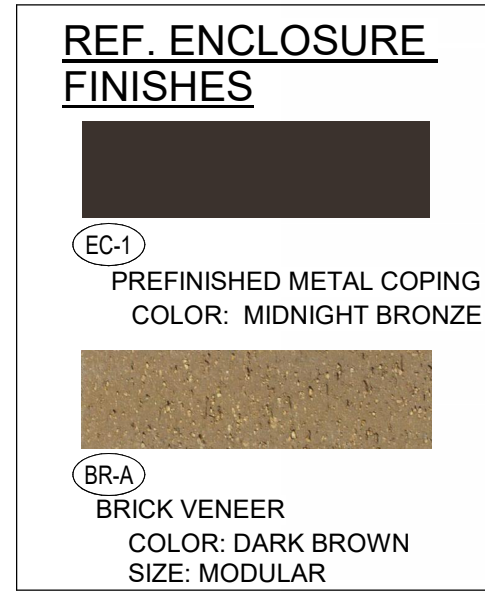
PERSPECTIVE VIEW

**ATTACHED CANOPY SCHEDULE**

Mark	Description	Count	Overall Width	Overall Depth	Tie Back Mounting (Offset From Top)	Integral Lighting
C1-C	Exterior Canopy	9	6'-4"	1'-0"	0"	No
C3-A	Exterior Canopy	1	9'-0"	5'-0"	2'-0"	Yes
C4-B	Exterior Canopy	1	9'-4"	4'-0"	2'-4"	Yes
C4-G	Exterior Canopy	2	7'-0"	4'-0"	2'-4"	Yes
C4-L	Exterior Canopy	1	28'-0"	4'-0"	2'-4"	Yes
Grand total		14				



PERSPECTIVE VIEW



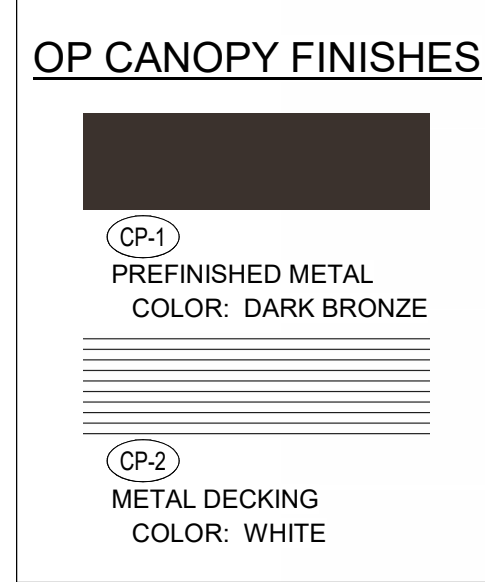
EXTERIOR ELEVATION



EXTERIOR ELEVATION



PERSPECTIVE VIEW



EXTERIOR ELEVATION

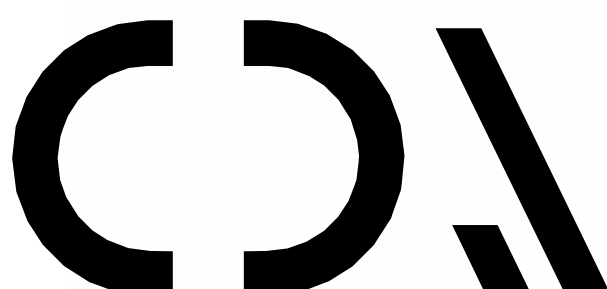


EXTERIOR ELEVATION



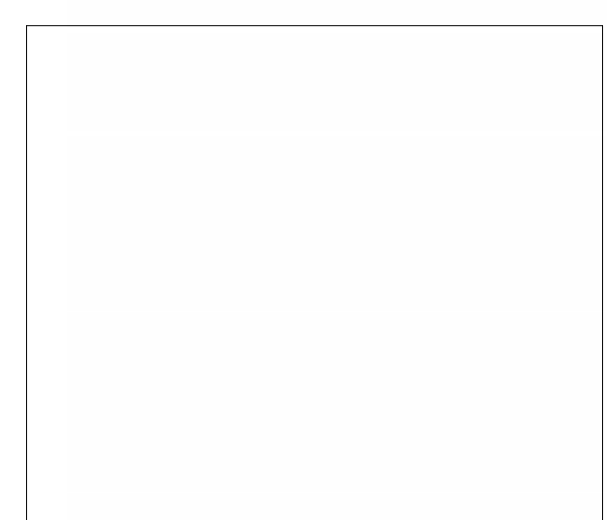
Chick-fil-A

Chick-fil-A  
5200 Buffington Road  
Atlanta, Georgia  
30349-2998



CHIPMAN DESIGN  
ARCHITECTURE INC  
1350 E TOUHY AVE  
FIRST FLOOR EAST  
DES PLAINES, IL 60018  
TEL: 847.298.6900

HEREBY CERTIFY THAT THESE PLANS HAVE BEEN PREPARED UNDER MY SUPERVISION AND THAT TO THE BEST OF MY KNOWLEDGE, THEY COMPLY WITH ALL RULES, REGULATIONS AND ORDINANCES OF Lee's Summit, MO RELATING TO STRUCTURES AND BUILDINGS.



**CHICK-FIL-A**  
Lee's Summit FSU  
SW Corner of US Hwy 50 and MO State  
Route 291  
Lee's Summit, MO 64081

**FSR#05248**  
BUILDING TYPE / SIZE: P14 LSR LRG  
RELEASE: 22.08

REVISION SCHEDULE		
NO.	DATE	DESCRIPTION

**DESIGN DEVELOPMENT**

CONSULTANT PROJECT # 23-3906.00  
PRINTED FOR DESIGN DEVELOPMENT  
DATE 07/12/23  
DRAWN BY ZJ  
CHECKED BY CG  
Information contained on this drawing and in all digital files produced for above named project may not be reproduced in any manner without express written or verbal consent from authorized project representatives.  
SHEET DESIGN OVERVIEW

SHEET NUMBER  
**X-900**