

GENERAL NOTE:
1 ~ ALL CONSTRUCTION SHALL CONFORM TO THE CITY OF LEE'S SUMMIT DESIGN AND CONSTRUCTION MANUAL AS ADOPTED BY ORDINANCE 5813.
2 ~ TRENCH CHECKS SHALL BE INSTALL AT ALL SANITARY WYES LOCATION.

RELEASED FOR CONSTRUCTION
As Noted on Plan Review

Development Services Department
Lee's Summit, Missouri

06/21/2023

ENGINEERING SOLUTIONS

ENGINEERING & SURVEYING

50 SE 30TH STREET
LEE'S SUMMIT, MO 64082
P: (816) 623-9888 F: (816) 623-9849

Professional Registration

Missouri
Engineering 2005002186-D
Surveying 2005008319-D
Kansas
Engineering E-1695
Surveying LS-218
Oklahoma
Engineering 5254
Nebraska
Engineering CA2821

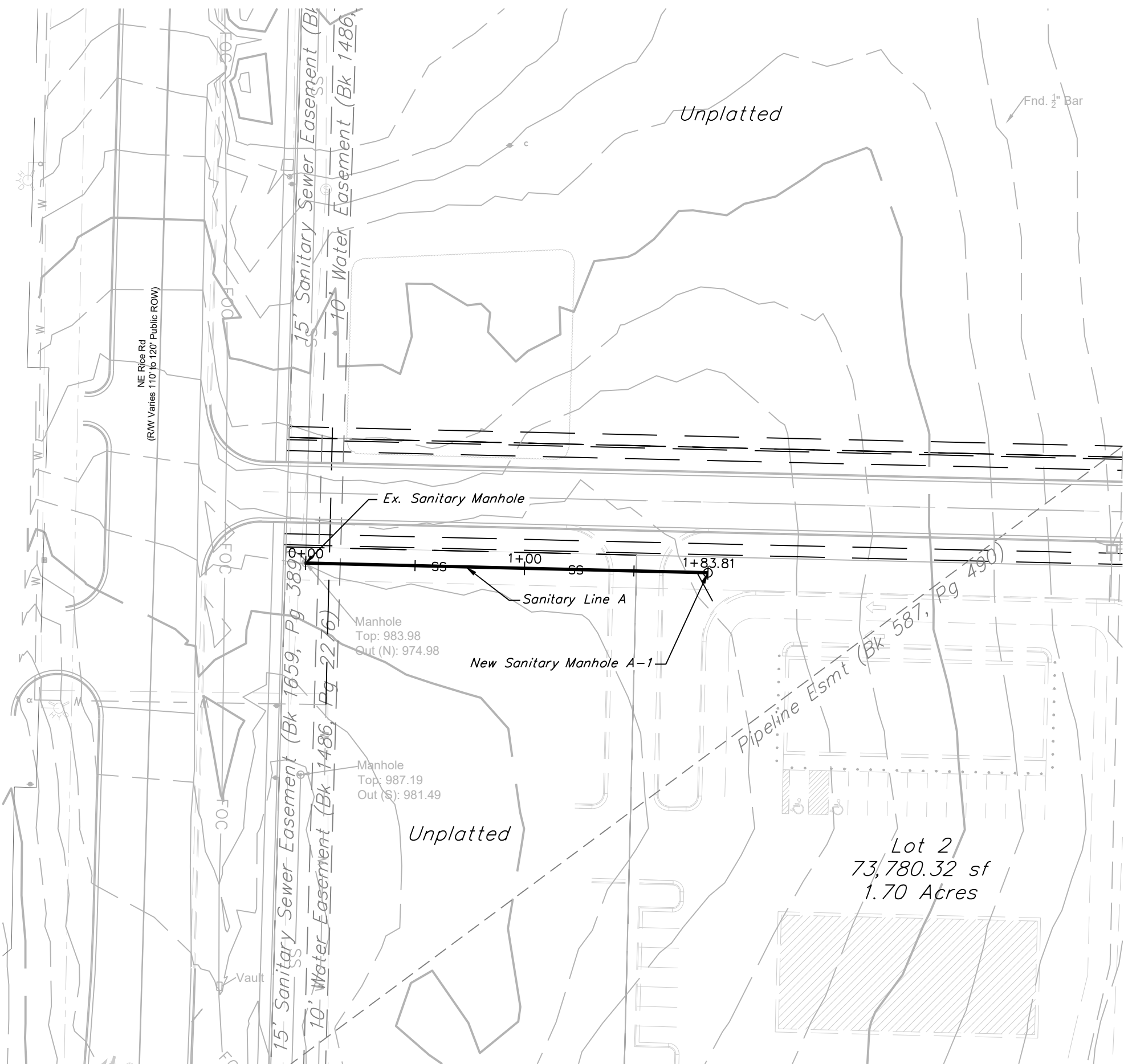
Sanitary Sewer General Layout
Construction Plans for:
Colbern Road Investments
Lee's Summit, Jackson County, Missouri

Project: COLBERN ROAD INVESTMENTS LEMO
Issue Date: September 12, 2022

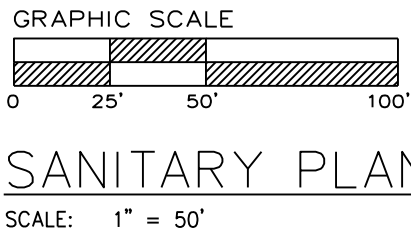
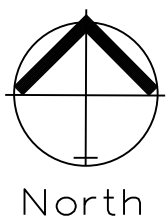
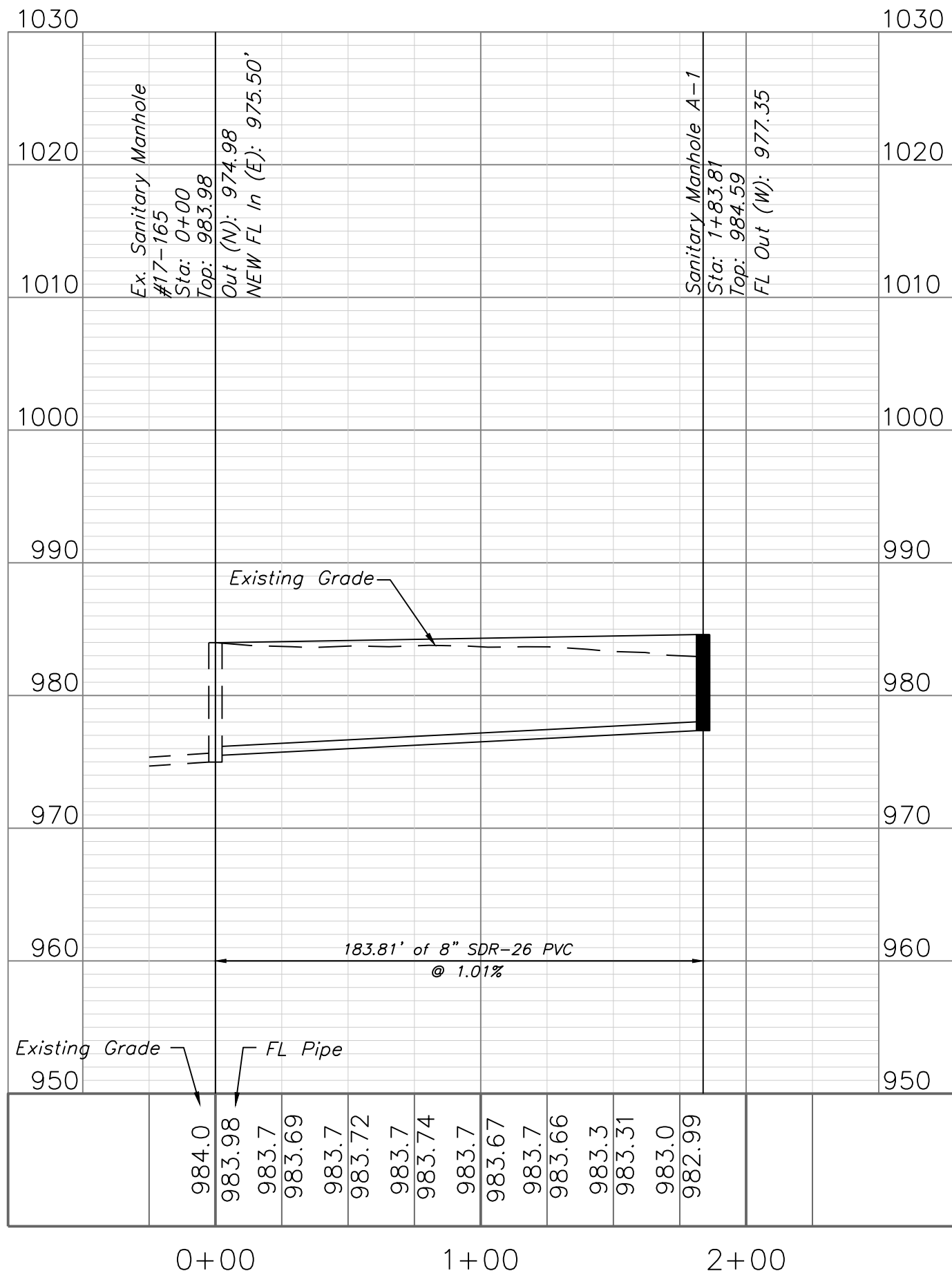
Sanitary Sewer General Layout
Construction Plans for:
Colbern Road Investments
Lee's Summit, Jackson County, Missouri

Matthew J. Schlicht
MO PE 2006019708
KS PE 19071
OK PE 25226
NE PE E-14335

REVISIONS



SANITARY LINE A

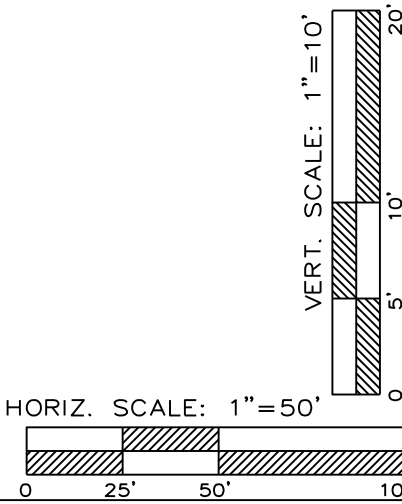


SANITARY PLAN & PROFILE
SCALE: 1" = 50'

RELEASED FOR CONSTRUCTION
As Noted on Plan Review

Development Services Department
Lee's Summit, Missouri

06/21/2023



Professional Registration
Missouri
Engineering 2005002186-D
Surveying 2005008319-D
Kansas
Engineering E-1685
Surveying LS-218
Oklahoma
Engineering 6254
Nebraska
Engineering CA2821

Sanitary Plan and Profile
Construction Plans for:
Colbern Road Investments
Lee's Summit, Jackson County, Missouri

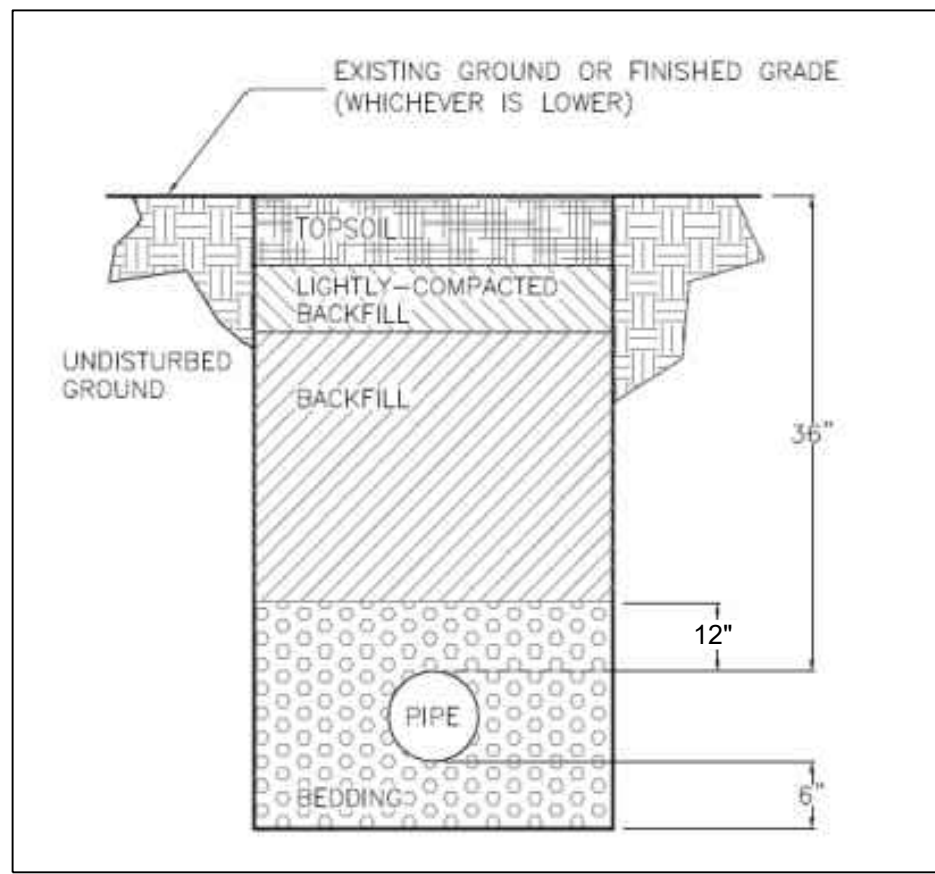
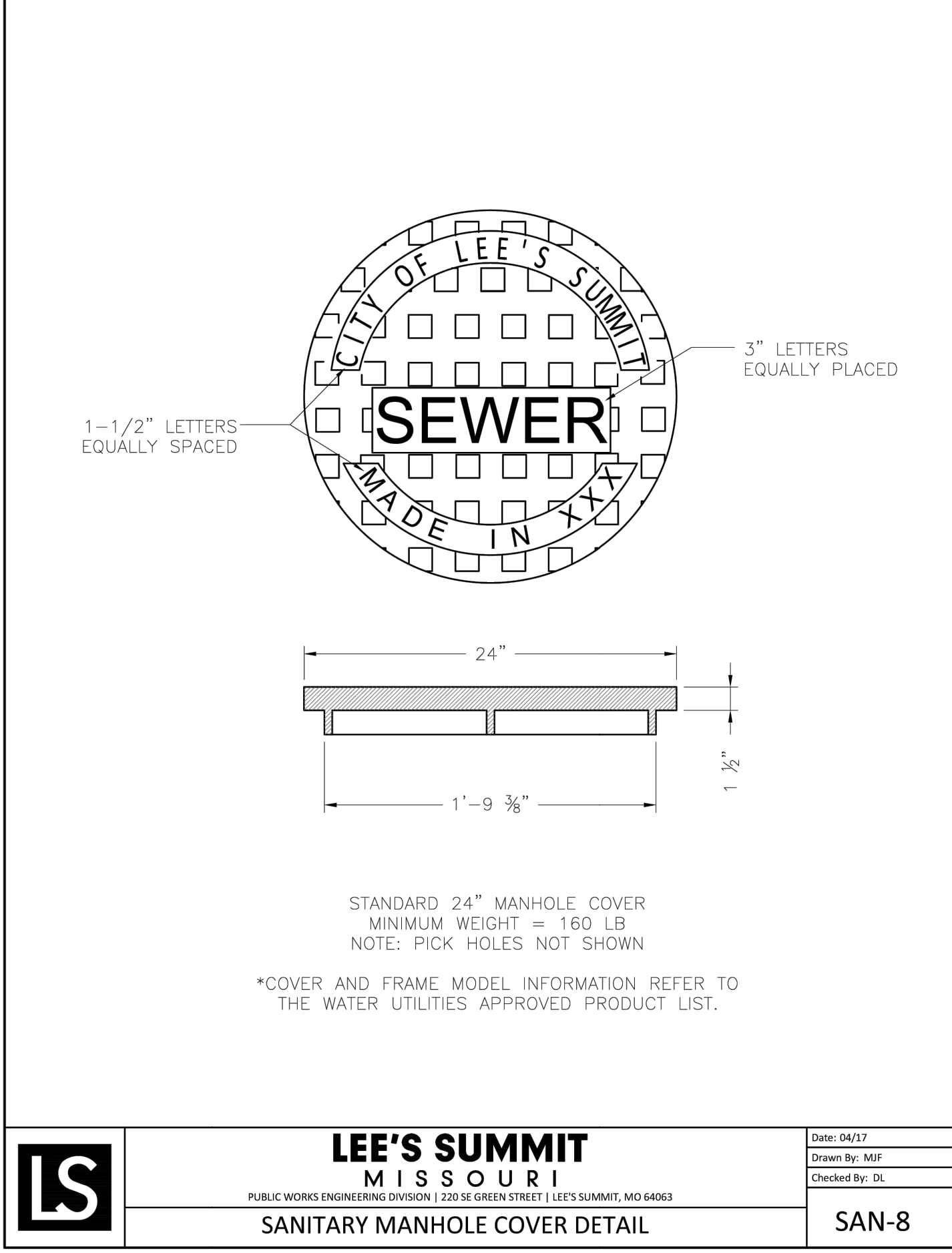
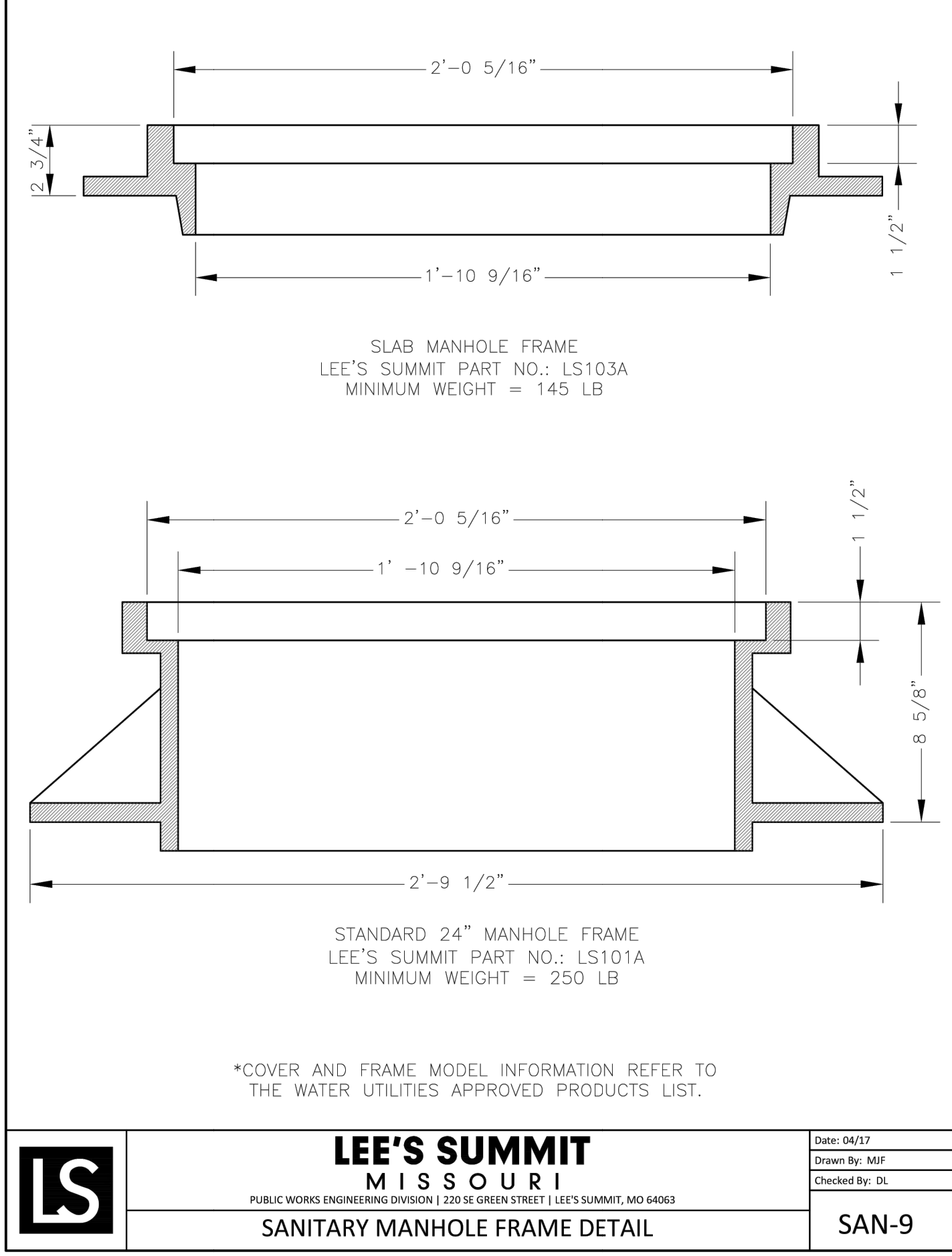
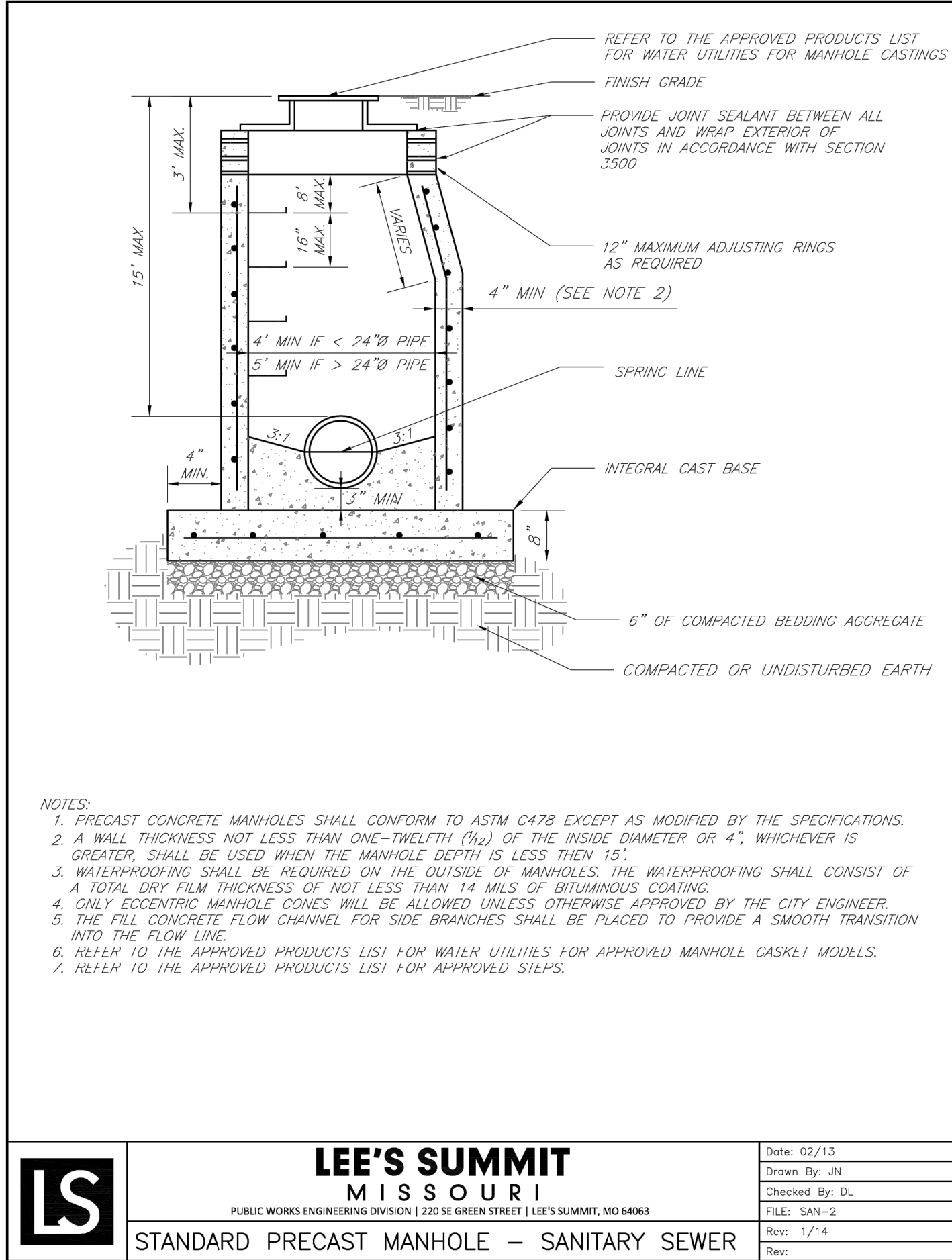
Project: COLBERN ROAD INVESTMENTS LIMO
Issue Date: September 12, 2022

Sanitary Plan and Profile
Construction Plans for:
Colbern Road Investments
Lee's Summit, Jackson County, Missouri



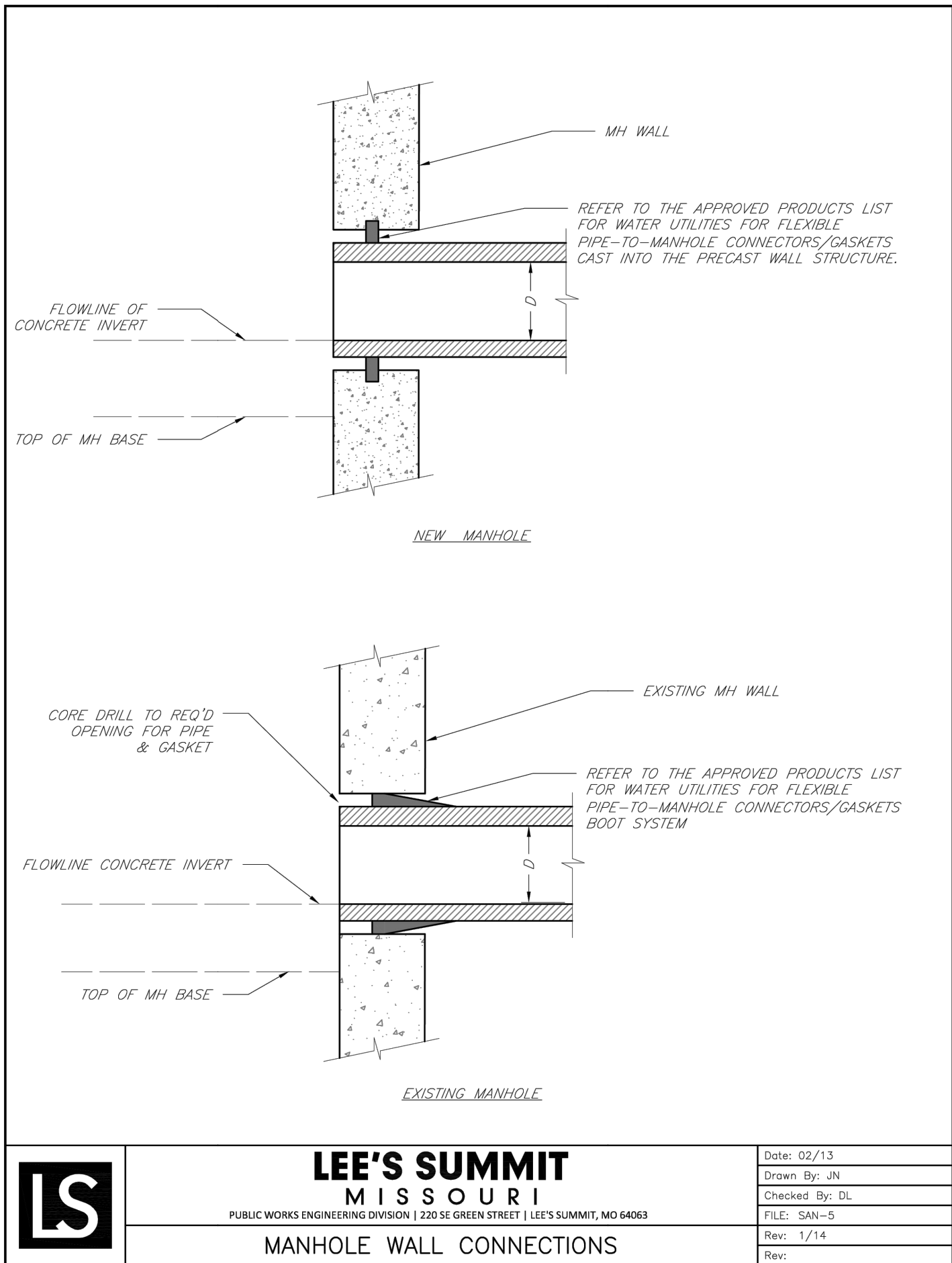
Matthew J. Schlicht
MO PE 2006019708
KS PE 19071
OK PE 25226
NE PE E-14335

REVISIONS



TRENCH AND BACKFILL DETAIL

N.T.S.



GENERAL NOTE:

1 ~ ALL CONSTRUCTION SHALL CONFORM TO THE CITY OF LEE'S SUMMIT DESIGN AND CONSTRUCTION MANUAL AS ADOPTED BY ORDINANCE 5813.

2 ~ TRENCH CHECKS SHALL BE INSTALL AT ALL SANITARY WYES LOCATION.