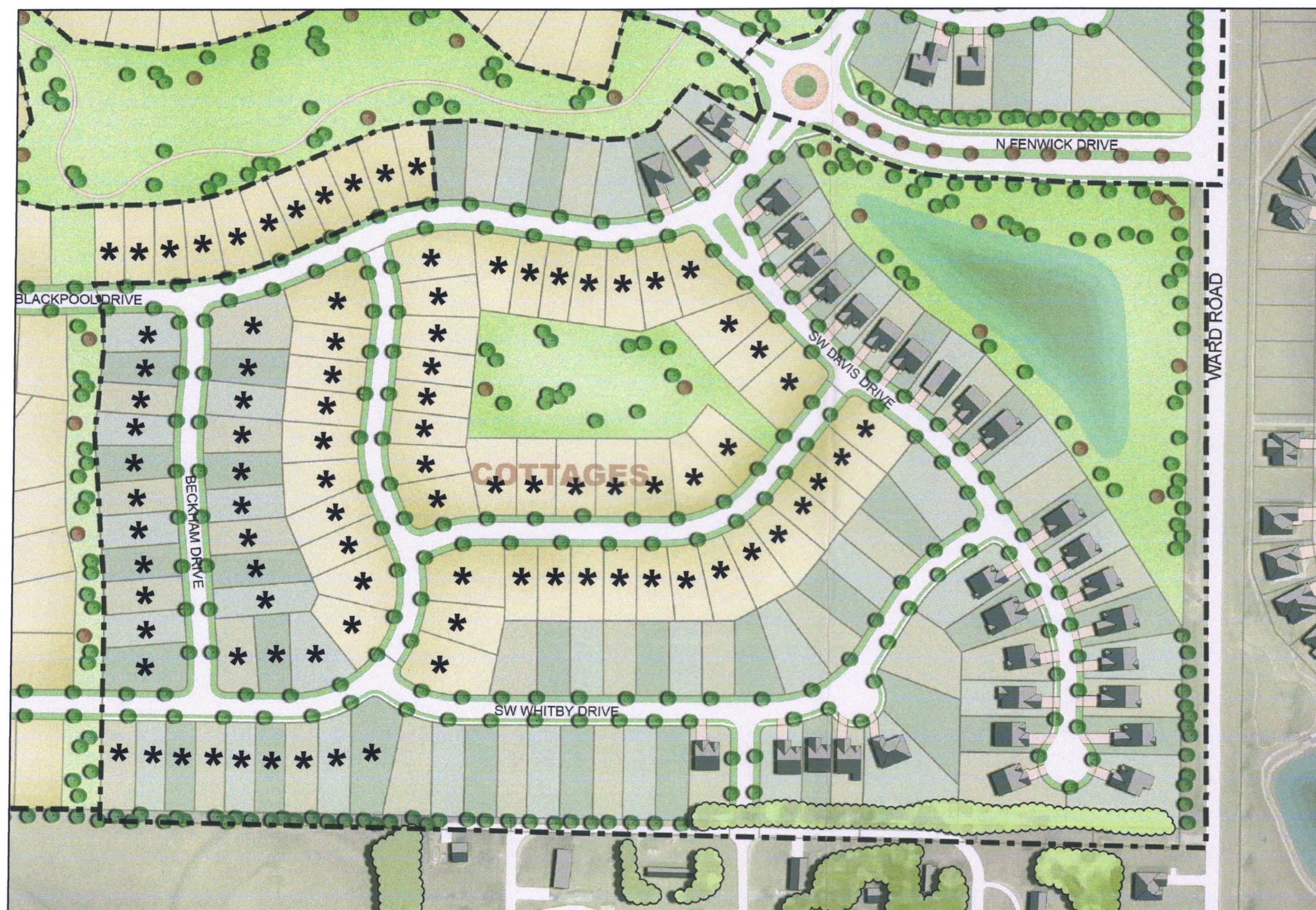
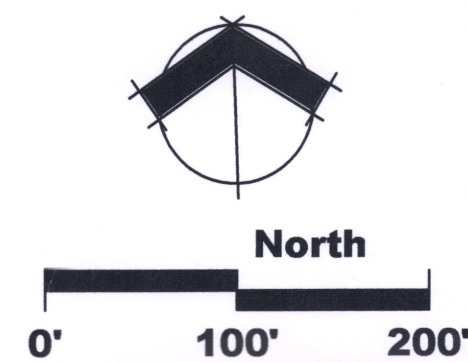
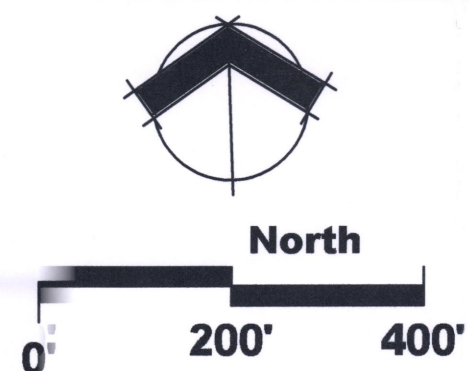




**RETREAT PLAN**  
\* 1- AND 2-STORY  
ALLOWED



**COTTAGES PLAN**  
\* 1- AND 2-STORY  
ALLOWED



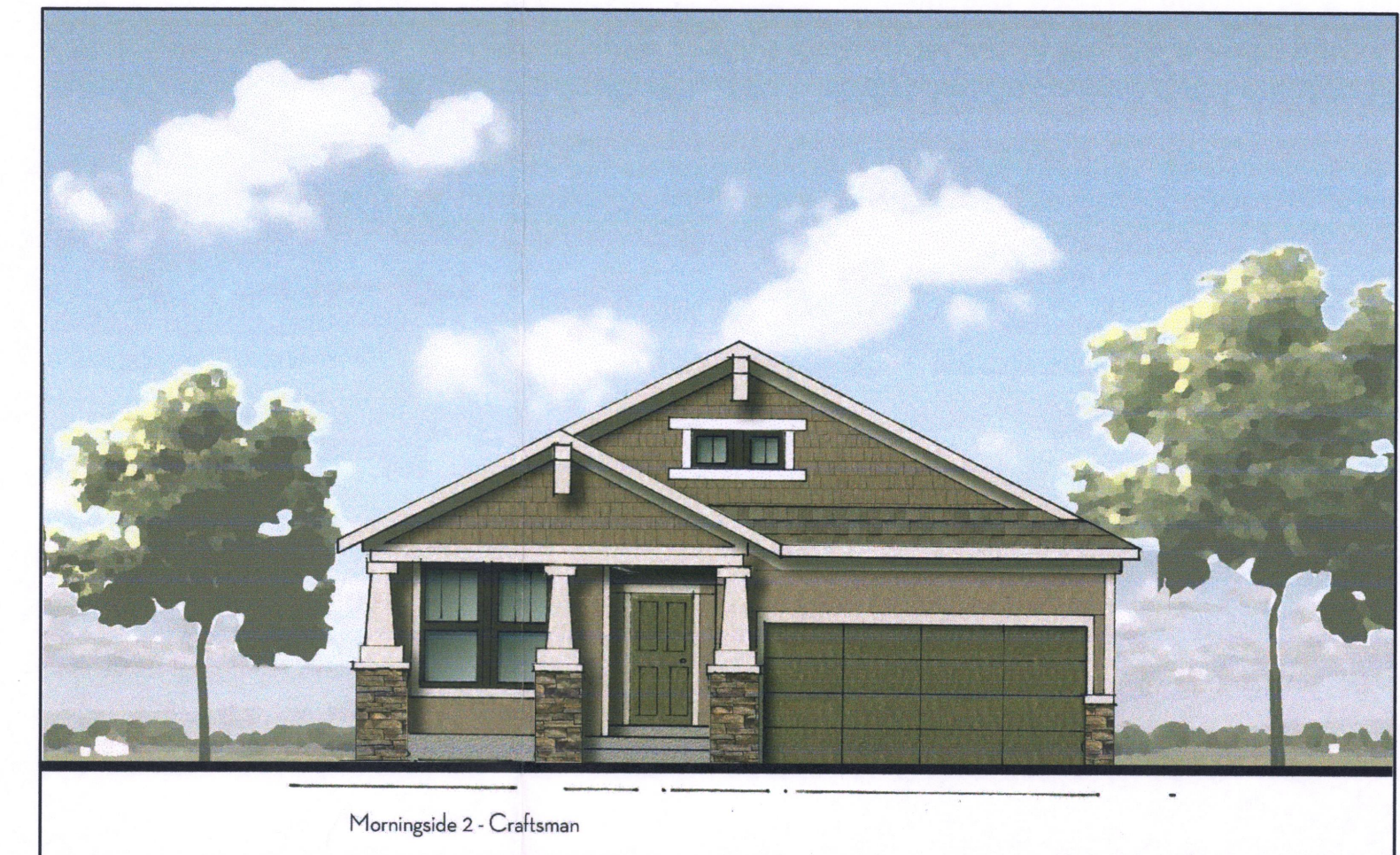
**PROVENANCE CRAFTSMAN - 2 STORY  
(TYP.)**



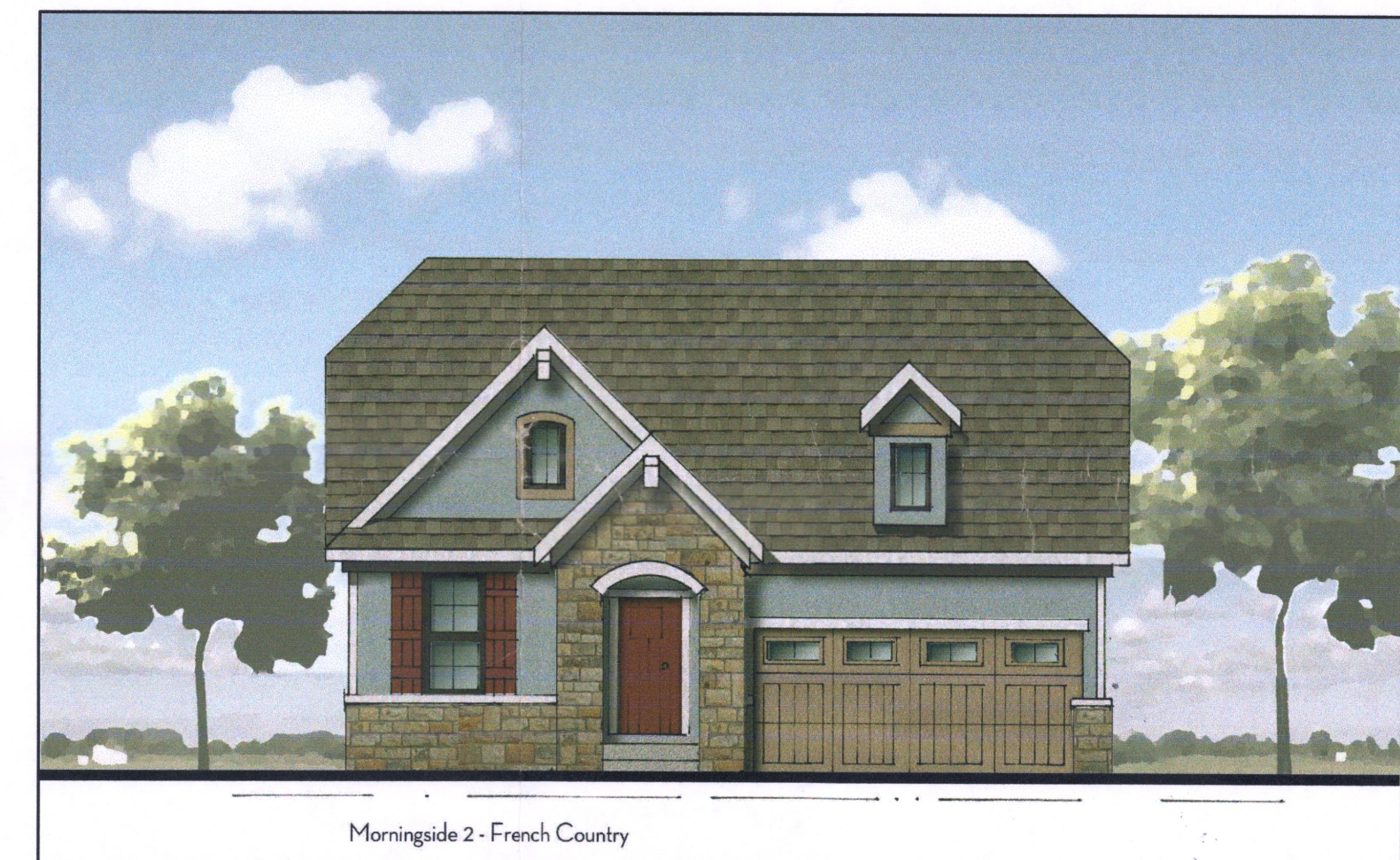
**PROVENANCE FRENCH COUNTRY - 2 STORY  
(TYP.)**



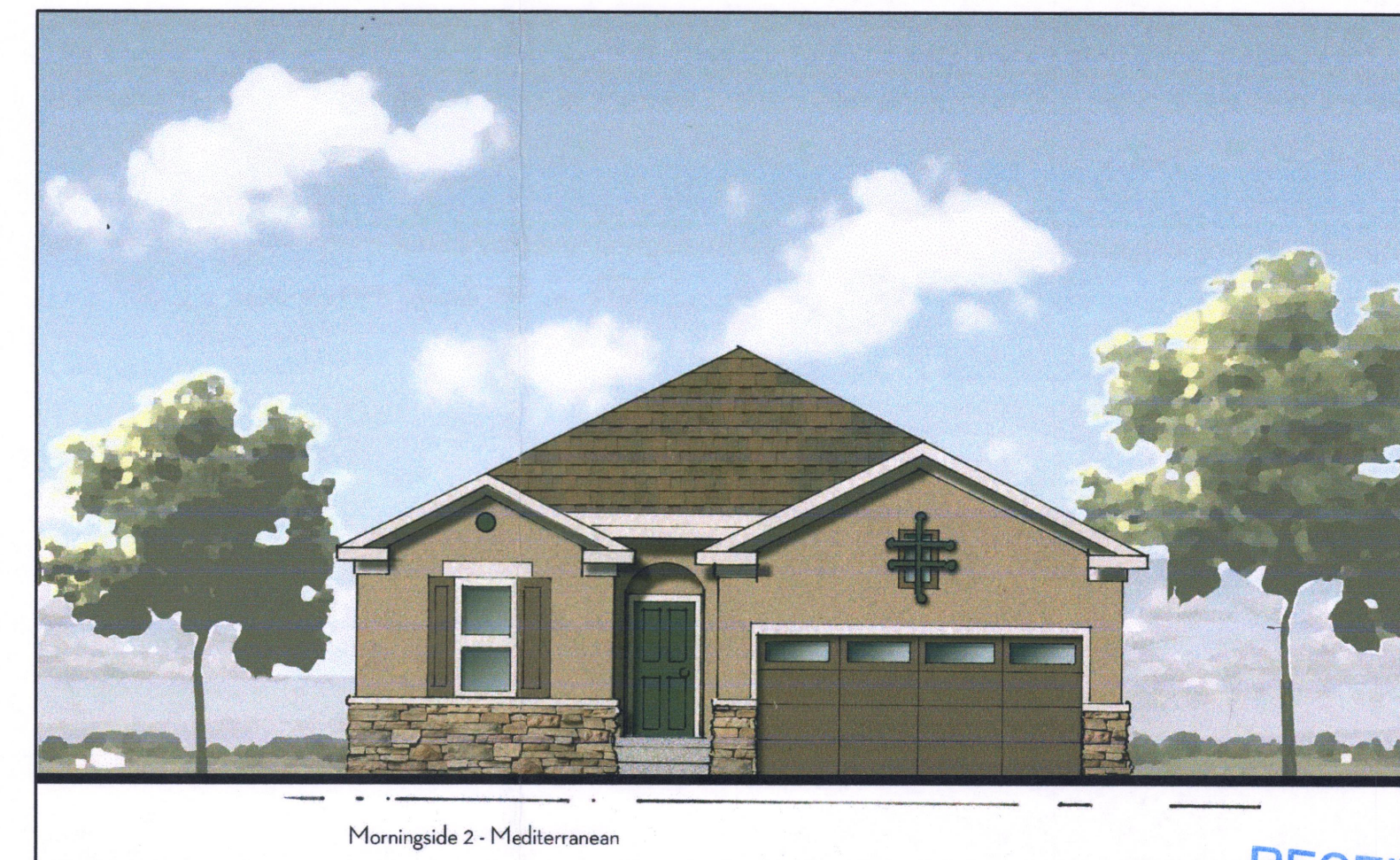
**PROVENANCE SHINGLE - 2 STORY  
(TYP.)**



**SPENCER CRAFTSMAN - 1 STORY  
(TYP.)**



**SPENCER FRENCH COUNTRY - 2 STORY  
(TYP.)**



**SPENCER MEDITERRANEAN - 1 STORY  
(TYP.)**

APPLICANT/OWNER/DEVELOPER:  
COREY WALKER  
BAW INVESTMENTS, LLC  
4601 COLLEGE BLVD., SUITE 350  
LEAWOOD, KS 66211  
PHONE: 816 561 3796  
COREY.WALKER@MARINER-RE.COM

**COTTAGES ELEVATIONS**

**KENSINGTON FARMS**  
Lee's Summit, Cass County, Missouri

DATE	DESCRIPTION
07-18-14	Submitted to City.
08-15-14	Re-submitted to City.

Reviewed By:	J.F.E.
Designed By:	--
Drafted By:	S.W.

Lutjen Project No.: 14033



1301 Burlington, #100  
North Kansas City, MO 64116  
816.587.4320  
816.587.1393 fax  
www.lutjen.com

Lutjen, Inc.  
MO State Certificate  
of Authority #: 2007022824

Sheet No.:

**4**

- 2014-099 -