

FIRE SEALING NOTES

- COORDINATE CONSTRUCTION OF OPENINGS AND PENETRATING ITEMS TO ENSURE THAT THROUGH-PENETRATION FIRESTOP SYSTEMS ARE INSTALLED ACCORDING TO SPECIFIED AND APPLICABLE UL REQUIREMENTS.
- COORDINATE SIZING OF SLEEVES, OPENINGS, CORE-DRILLED HOLES, OR CUT OPENINGS TO ACCOMMODATE THROUGH-PENETRATION FIRESTOP SYSTEMS.
- DO NOT COVER UP THROUGH-PENETRATION FIRESTOP SYSTEM INSTALLATIONS UNTIL EXAMINED BY INSPECTOR, IF REQUIRED BY AUTHORITIES HAVING JURISDICTION.
- COMPATIBILITY: PROVIDE THROUGH-PENETRATION FIRESTOP SYSTEMS THAT ARE COMPATIBLE WITH ONE ANOTHER, WITH THE SUBSTRATES FORMING OPENINGS, AND WITH THE ITEMS, IF ANY, PENETRATING THROUGH-PENETRATION FIRESTOP SYSTEMS, UNDER CONDITIONS OF SERVICE AND APPLICATION, AS DEMONSTRATED BY THROUGH-PENETRATION FIRESTOP SYSTEM MANUFACTURER BASED ON TESTING AND FIELD EXPERIENCE.
- PROVIDE COMPONENTS FOR EACH THROUGH-PENETRATION FIRESTOP SYSTEM THAT ARE NEEDED TO INSTALL FILL MATERIALS. USE ONLY COMPONENTS SPECIFIED BY THROUGH-PENETRATION FIRESTOP SYSTEM MANUFACTURER AND APPROVED BY QUALIFIED TESTING AND INSPECTING AGENCY FOR FIRESTOP SYSTEMS INDICATED.
- PROVIDE SLEEVES THROUGH ALL FIRE-RATED WALLS AND FILL VOIDS SURROUNDING SLEEVES AND INTERIOR TO SLEEVES AROUND PIPING WITH FIRE STOP PUTTY WITH UL LISTED 3 HOUR RATING INSTALLED AS PER MANUFACTURERS RECOMMENDATIONS.
- FIRE SEAL ALL PIPING, CONDUIT, CABLE, ETC PENETRATIONS ROUTED THROUGH FIRE RATED WALLS.
- PROVIDE FIRE RATED ENCLOSURES OR WRAPS ON LIGHT FIXTURES AND OTHER ITEMS PENETRATING FIRE RATED CEILINGS, FLOOR/CEILING/ CEILING/ROOF ASSEMBLIES TO MAINTAIN UL LISTING FOR CONSTRUCTION.

GENERAL ELECTRICAL NOTES

- COMPLETE INSTALLATION SHALL BE IN ACCORDANCE WITH THE LATEST ADOPTED VERSION OF THE NATIONAL ELECTRICAL CODE, LOCAL AND STATE CODES, AND REQUIREMENTS OF THE AHJ.
- COORDINATE LOCATIONS OF RECEPTACLES, SWITCHES, ETC. WITH ARCHITECTURAL CASEWORK AND ELEVATIONS.
- REFER TO MOUNTING HEIGHTS DETAIL FOR MOUNTING HEIGHTS OF ALL DEVICES NOT INDICATED OTHERWISE.
- PROVIDE ALL EMPTY CONDUITS WITH PULL STRINGS AND BUSHED ENDS.
- CONTRACTOR SHALL CONCEAL ALL CONDUIT, FITTINGS, AND DEVICES FROM VIEW WHERE REASONABLY POSSIBLE.

GENERAL NOTES

- SOME ROOM NAMES MAY NOT BE SHOWN FOR PURPOSE OF CLARIFYING PLAN. REFER TO ARCHITECTURAL PLANS FOR REFERENCE TO ROOM NAMES NOT SHOWN.
- IT IS THE RESPONSIBILITY OF THE CONTRACTOR TO MAINTAIN AND KEEP AT THE JOB SITE, AN UP TO DATE SET OF "RECORD DRAWINGS" SHOWING ALL CHANGES FROM THE ORIGINAL PLANS. THE CONTRACTOR SHALL DELIVER THE "RECORD DRAWINGS" TO THE ENGINEER AT THE CONCLUSION OF THE PROJECT ELECTRONICALLY.
- THESE DRAWINGS ARE DIAGRAMMATIC. THE CONTRACTOR SHALL VERIFY ALL CONDITIONS (NEW AND EXISTING), DIMENSIONS, AND CLEARANCES PRIOR TO THE COMMENCEMENT OF WORK AND SHALL INCLUDE ALL COSTS, EQUIPMENT, MATERIAL, ACCESSORIES, ETC. REQUIRED FOR A FULLY COMPLETE, FUNCTIONAL AND CODE COMPLIANT INSTALLATION.
- FINAL LOCATIONS OF ALL DEVICES, LIGHT FIXTURES, EQUIPMENT ETC SHALL BE INDICATED ON THE ARCHITECTURAL DRAWINGS. ALL DIMENSIONAL INFORMATION SHALL BE OBTAINED FROM ARCHITECTURAL PLANS. NO DIMENSIONAL INFORMATION SHALL BE OBTAINED FROM MEP DRAWINGS.
- THE CONTRACTOR SHALL OBTAIN ALL REQUIRED PERMITS, APPROVALS, LICENSES, ETC. AS NEEDED FOR THE COMPLETE INSTALLATION AND PROJECT. THE CONTRACTOR SHALL COORDINATE WITH THE OWNER FOR ALL FEES AND DATA NEEDED FOR THIS.

GEN. MECHANICAL NOTES

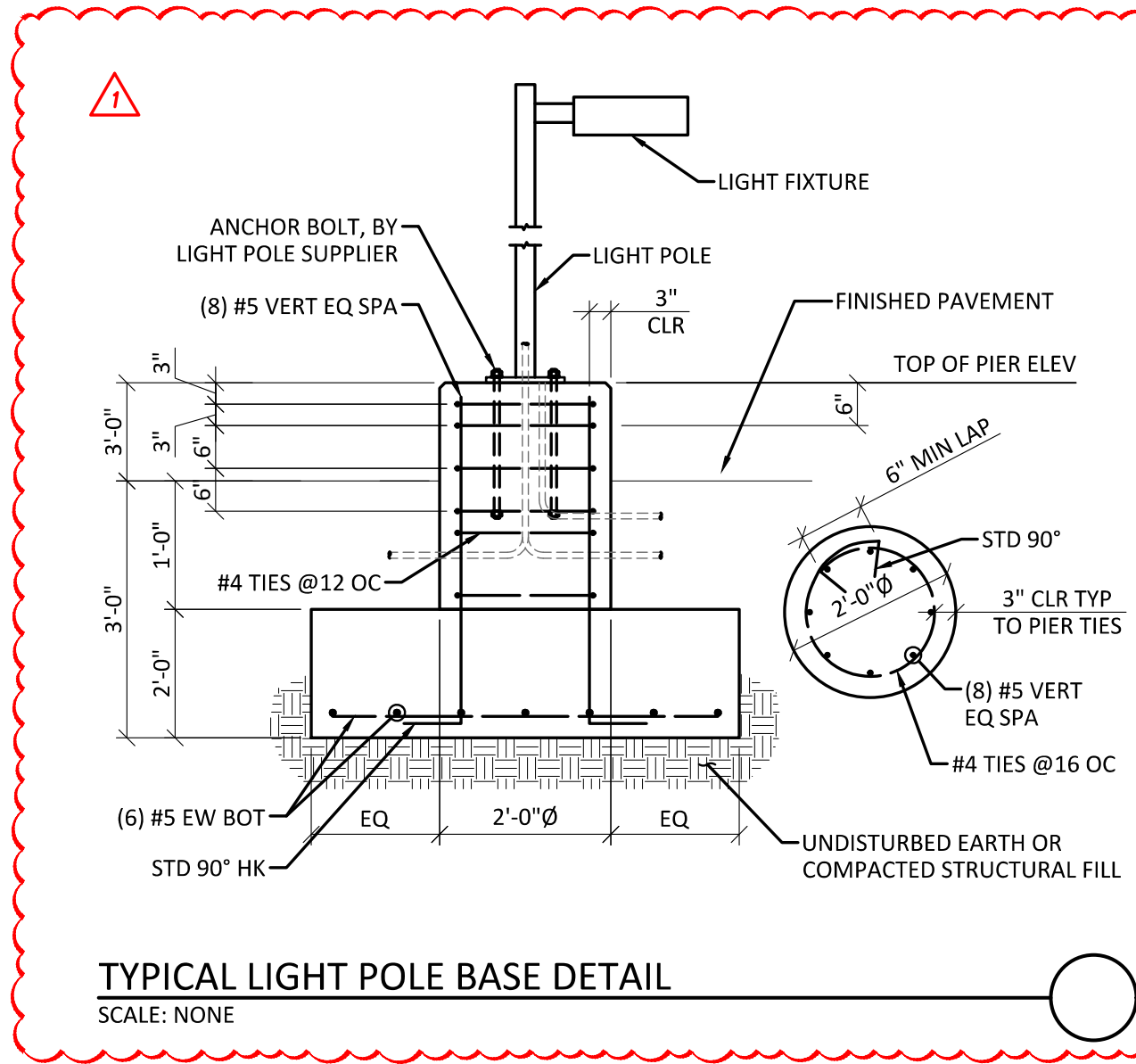
- COMPLETE INSTALLATION SHALL BE IN ACCORDANCE WITH THE LATEST ADOPTED VERSION OF THE INTERNATIONAL MECHANICAL CODE, LOCAL AND STATE CODES, AND REQUIREMENTS OF THE AHJ.
- ANY POWER FOR CONTROL SYSTEMS TO BE PROVIDED BY E/C IS INDICATED ON ELECTRICAL PLANS. ANY ADDITIONAL LINE VOLTAGE OR LOW VOLTAGE POWER REQUIRED BY THE M/C OR SUBCONTRACTORS TO HAVE A FULLY FUNCTIONING SYSTEM SHALL BE PROVIDED BY THE M/C CONTRACTOR OR SUBS.
- ALL EQUIPMENT SHALL BE ADEQUATELY AND PROPERLY SUPPORTED AND FASTENED FROM STRUCTURE.
- ALL EQUIPMENT AND ACCESSORIES INSTALLED IN CONCEALED SPACES REQUIRING ACCESS SHALL BE PROVIDED WITH ACCESS DOORS MEETING ANY FIRE REQUIREMENTS OF THE WALL/CEILING THEY ARE INSTALLED.
- EACH AIR HANDLING UNIT OVER 2000CFM SHALL BE PROVIDED WITH A SMOKE DETECTOR TO SHUT DOWN THE UNIT PER IMC 606 AS REQUIRED BY AHJ. COORDINATE WITH OTHER TRADES.
- START UP AND ADJUST ALL EQUIPMENT AND VERIFY ALL MECHANICAL SYSTEMS IN OPERATION IN ACCORDANCE WITH THEIR INTENDED PURPOSES. SUBMIT BALANCE AND START UP REPORTS TO THE A/E. REFER TO SPECIFICATIONS FOR ANY ADDITIONAL REQUIREMENTS.

GENERAL PLUMBING NOTES

- COMPLETE INSTALLATION SHALL BE IN ACCORDANCE WITH THE LATEST ADOPTED VERSION OF THE INTERNATIONAL PLUMBING CODE, LOCAL AND STATE CODES, AND REQUIREMENTS OF THE AHJ.
- NO PIPING SHALL BE INSTALLED WHERE IT WILL SUBJECT TO FREEZING TEMPERATURES. PIPING IN EXTERIOR WALLS SHALL BE INSTALLED ON THE WARM SIDE OF BUILDING INSULATION, INSULATED AND THE CHASE SHALL BE VENTILATED WITH GRILLES ALLOWING INDOOR AMBIENT CONDITIONS TO CIRCULATE THROUGH THE CHASE.
- PROVIDE CLEANOUTS IN THE FOLLOWING LOCATIONS:
 - IN ALL HORIZONTAL DRAINS (WITHIN THE BUILDING) NOT MORE THAN 100 FEET APART.
 - IN BUILDING SEWERS LOCATED NO MORE THAN 100 FEET APART MEASURED FROM THE UPSTREAM ENTRANCE OF THE CLEANOUT.
 - EACH CHANGE OF DIRECTION OF THE BUILDING DRAIN OR HORIZONTAL WASTE OR SOIL LINES GREATER THAN 45 DEGREES WHERE MORE THAN ONE CHANGE OF DIRECTION OCCURS IN A RUN OF PIPING, ONLY ONE CLEANOUT SHALL BE REQUIRED FOR EACH 40 FEET OF DEVELOPED LENGTH OF THE DRAINAGE PIPING.
 - AT THE BASE OF EACH WASTE OR SOIL STACK.
 - NEAR THE JUNCTION OF THE BUILDING DRAIN AND BUILDING SEWER.

COORDINATION NOTES

- COORDINATE REQUIREMENTS FOR INSTALLATION OF SYSTEMS AND EQUIPMENT WITH ALL OTHER TRADES.
- THE CONTRACTOR SHALL COORDINATE THE ROUTING AND PATH OF ALL SYSTEMS, CONDUITS, PIPES, DUCTS, ETC WITH THE POSITION AND LAYOUT OF THE STRUCTURE. THE CONTRACTOR IS RESPONSIBLE FOR PROVIDING NECESSARY OFFSETS, TURNS, RISERS AND DROPS FOR SYSTEMS AND COMPONENTS AS NEEDED TO INSTALL THE MEP SYSTEMS TO CLEAR STRUCTURE, CEILINGS, ETC AND OTHER SYSTEMS IN POTENTIAL CONFLICT WITH ROUTING.
- COORDINATE WORK WITH OTHER TRADES TO INSTALL SYSTEMS ABOVE CEILING HEIGHTS INDICATED ON ARCHITECTURAL PLANS.
- CHECK SPACE REQUIREMENTS WITH OTHER TRADES AND STRUCTURE/CONSTRUCTION TO INSURE THAT ALL MATERIALS AND EQUIPMENT CAN BE INSTALLED IN THE SPACE ALLOTTED INCLUDING FINISHED SUSPENDED CEILINGS AND OTHER SPACES, CHASES, ETC WITHIN THE BUILDING. MAKE MODIFICATIONS THERETO AS REQUIRED AND APPROVED.
- TRANSMIT TO OTHER TRADES ALL INFORMATION REQUIRED FOR WORK TO BE PROVIDED UNDER THEIR RESPECTIVE SECTIONS IN AMPLE TIME FOR INSTALLATION.
- WHEREVER WORK INTERCONNECTS WITH WORK OF OTHER TRADES, COORDINATE WITH THOSE TRADES TO INSURE THAT ALL SUBCONTRACTORS HAVE THE INFORMATION NECESSARY SO THAT THEY MAY PROPERLY INSTALL ALL CONNECTIONS AND EQUIPMENT. IDENTIFY ALL ITEMS OF WORK THAT REQUIRE ACCESS SO THAT THE CEILING TRADE WILL KNOW WHERE TO INSTALL ACCESS DOORS AND PANELS.
- COORDINATE, PROJECT AND SCHEDULE WORK WITH OTHER TRADES IN ACCORDANCE WITH THE CONSTRUCTION SEQUENCE.
- DRAWINGS SHOW THE GENERAL RUNS OF CONDUITS, PIPING AND DUCTWORK AND APPROXIMATE LOCATION OF OUTLETS. ANY SIGNIFICANT CHANGES IN LOCATION OF ITEMS NECESSARY IN ORDER TO MEET FIELD CONDITIONS SHALL BE BROUGHT TO THE IMMEDIATE ATTENTION OF THE ARCHITECT/ENGINEER AND RECEIVE HIS APPROVAL BEFORE SUCH ALTERATIONS ARE MADE. ALL SUCH MODIFICATIONS SHALL BE MADE WITHOUT ADDITIONAL COST TO THE OWNER.
- CONTRACTOR SHALL BE RESPONSIBLE FOR PROTECTION AND REPAIR OF SURFACES, AREAS AND PROPERTY THAT MAY BE DAMAGED AS A RESULT OF CONSTRUCTION ACTIVITIES.
- ADJUST LOCATION OF PIPING, DUCTWORK, ETC. TO PREVENT INTERFERENCES, BOTH ANTICIPATED AND ENCOUNTERED. DETERMINE THE EXACT ROUTE AND LOCATION OF EACH ITEM PRIOR TO FABRICATION. MAKE OFFSETS, TRANSITIONS AND CHANGES IN DIRECTION IN SYSTEMS AS REQUIRED TO MAINTAIN ADEQUATE CLEARANCES AND HEADROOM.
- WHEREVER THE WORK IS OF SUFFICIENT COMPLEXITY, PREPARE ADDITIONAL COORDINATION DRAWINGS AND ORGANIZE ON-SITE MEETINGS WITH ALL RELATED SUBCONTRACTORS TO COORDINATE THE WORK BETWEEN TRADES. DRAWINGS SHALL CLEARLY SHOW THE WORK AND ITS RELATION TO THE WORK OF OTHER TRADES, AND BE SUBMITTED FOR REVIEW PRIOR TO COMMENCING SHOP FABRICATION OR ERECTION IN THE FIELD.
- COORDINATE WITH LOCAL UTILITY PROVIDERS FOR THEIR REQUIREMENTS FOR SERVICE CONNECTIONS AND PROVIDE ALL NECESSARY PAYMENTS, MATERIALS, LABOR AND TESTING TO ACCOMPLISH THE WORK.

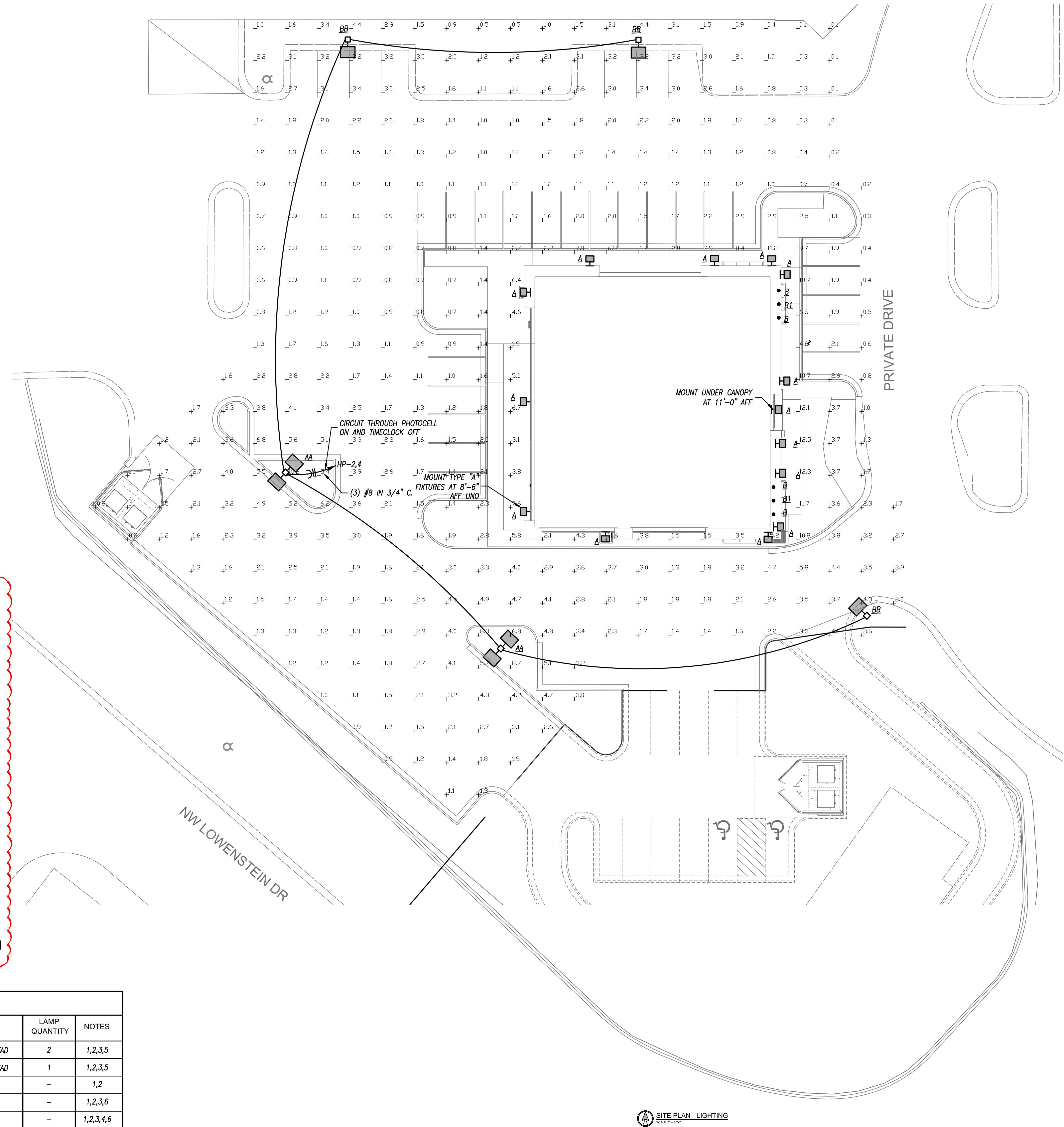


LIGHT FIXTURE SCHEDULE

PLAN MARK	MANUFACTURER	MODEL NUMBER	MOUNTING	FINISH	LAMP CODE	LAMP QUANTITY	NOTES
AA	MCGRAW-EDISON	GALN-SA2C-740-U-T4FT-20180 DEG	20' POLE	BRONZE	216 LED PER HEAD	2	1,2,3,5
BB	MCGRAW-EDISON	GALN-SA2C-740-U-T4FT	20' POLE	BRONZE	216 LED PER HEAD	1	1,2,3,5
A	LITHONIA	WPX1-LED-P2-30K-MVOLT-E14WC-DOBXD	WALL/SURFACE	BRONZE	24W LED	-	1,2
B	GREEN CREATIVE	12NCDRL60IM/930/EXT	RECESSED	BLACK	12W LED	-	1,2,3,6
B1	GREEN CREATIVE	12NCDRL60IM/930/EXT-EM	RECESSED	BLACK	12W LED	-	1,2,3,4,6

NOTES LEGEND

- PROVIDE WET LOCATION RATED FIXTURE
- PROVIDE COLD LOCATION RATED DRIVER
- PROVIDE SQUARE STRAIGHT STEEL POLE RATED FOR 100 MPH WIND GUSTS, PRIMED AND PAINTED TO MATCH FIXTURE
- PROVIDE EMERGENCY BATTERY
- PROVIDE ALL ACCESSORIES FOR A COMPLETE INSTALLATION.
- PROVIDE WEATHER PROOF JUNCTION BOX FOR DRIVERS AND ELECTRICAL CONNECTIONS ABOVE SOFFIT.



SITE PLAN - LIGHTING
SCALE: 1" = 20'-0"



architecture|interiors|planning
2231 sw wannamaker rd suite 303
topeka, kansas 66614-4275
phone: 785.273.7540
fax: 785.273.7579

500 north broadway suite 200
oklahoma city, ok 73102
phone: 405.231.3105
fax: 405.231.3115



Bryan Leinewetter, Engineer
MO# PE-2020020297

CORE & SHELL BUILDING
STREETS OF WEST PRYOR LOT 5
LEES SUMMIT, MISSOURI

SUBMISSION DATES
MAY 23, 2023
JUNE 12, 2023-REV 1

SHEET TITLE
SITE PHOTOMETRIC
PLAN AND GENERAL
NOTES

PROJECT NUMBER
230117

SHEET NUMBER
ME-201



PEARSON KENT MCKINLEY RAAF ENGINEERS LLC
2949 SW WANNAMAKER DR., TOPEKA, KANSAS 66614
785.273.2447
WWW.PKMR.ENG.COM

23.205