

EXISTING 3" SANITARY
SEWER FORCE MAIN

PROPOSED LINE A
12" C900 DR 18 WATER LINE

PROPOSED PRIVATE
8" C900 DR 18 WATER LINE
(BY SEPARATE PLAN SET)

UNPLATTED
PARCEL #
60-500-01-02-02-0-00-000
FURRY, MICHAEL E
PIERSON, ARMINDA K
FURRY, BLAKE
WEST 1/2, WEST 1/2, NE 1/4

MO GRS BENCHMARK:

STATION NAME - JA-90

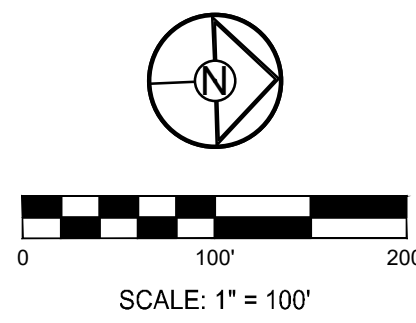
KC METRO ALUMINUM GRS DISK SET IN CONCRETE STAMPED "JA-90, 1988"
LOCATED NEAR THE INTERSECTION OF SE JOEL AVE & BLUE PARKWAY AND 26 FEET SOUTH
OF THE CENTERLINE OF BLUE PARKWAY.
N:996874.9690, E:2840937.1365

ELEV. 997.045

PROJECT BENCHMARK:

"SQUARE" CUT IN TOP OF CONCRETE STORM MANHOLE
STORM MANHOLE IS LOCATED APPROX. 130 FEET EAST OF THE
INTERSECTION OF SE JOEL AVE & BLUE PARKWAY AND 26 FEET SOUTH
OF THE CENTERLINE OF BLUE PARKWAY.
N:996874.9690, E:2840937.1365

ELEV. 1005.719



SCHLAGEL

ENGINEERS PLANNERS SURVEYORS LANDSCAPE ARCHITECTS

14920 West 107th Street • Lenexa, Kansas 66215
(913) 492-5158 • Fax: (913) 492-8400
WWW.SCHLAGELASSOCIATES.COM
Missouri State Certificates of Authority
#E2002003600-F #AC200100237 #LS200200859-F

PREPARED BY:

STATE OF MISSOURI

MARK ALLEN BREUER

NUMBER RE-2003007268

03-29-2023

SCHLAGEL & ASSOCIATES, P.A.

RESIDENCES AT BLACKWELL
PUBLIC WATER MAIN PLANS

HERITAGE STREET LEE'S SUMMIT, MO

REVISION DATE	DESCRIPTION
1 01/23/2023	PER CITY COMMENTS
2 03/24/2023	PER CITY COMMENTS
3	
4	
5	
6	
7	
8	

DRAWN BY: ###	CHECKED BY: ###	DATE PREPARED: 11/30/2022	PROJ. NUMBER: 22-102
---------------	-----------------	---------------------------	----------------------

GENERAL LAYOUT

MO GRS BENCHMARK:

STATION NAME - JA-90

KC METRO ALUMINUM GRS DISK SET IN CONCRETE STAMPED "JA-90, 1988"
LOCATED NEAR THE INTERSECTION OF LANGSFORD ROAD AND OLD
LANGSFORD ROAD, 43 FEET SOUTHEAST OF THE CENTER OF LANGSFORD
ROAD AND 32 FEET NORTH OF THE CENTER OF OLD LANGSFORD ROAD.
N:1001052.8503, E:2845604.8272

ELEV. 997.045

PROJECT BENCHMARK:

"SQUARE" CUT IN TOP OF CONCRETE STORM MANHOLE
STORM MANHOLE IS LOCATED APPROX. 130 FEET EAST OF THE
INTERSECTION OF SE JOEL AVE & BLUE PARKWAY AND 26 FEET SOUTH
OF THE CENTERLINE OF BLUE PARKWAY.
N:996874.9690, E:2840937.1365

ELEV. 1005.719

NOTES:

- ALL CONSTRUCTION ON THIS PROJECT SHALL CONFORM TO THE CITY OF LEE'S SUMMIT TECHNICAL SPECIFICATIONS.
- THE CONTRACTOR IS RESPONSIBLE FOR VERIFYING ALL EXISTING UTILITY LOCATIONS PRIOR TO EXCAVATION.

PREPARED BY:



SCHLAGEL & ASSOCIATES, P.A.

RESIDENCES AT BLACKWELL
PUBLIC WATER MAIN PLANS

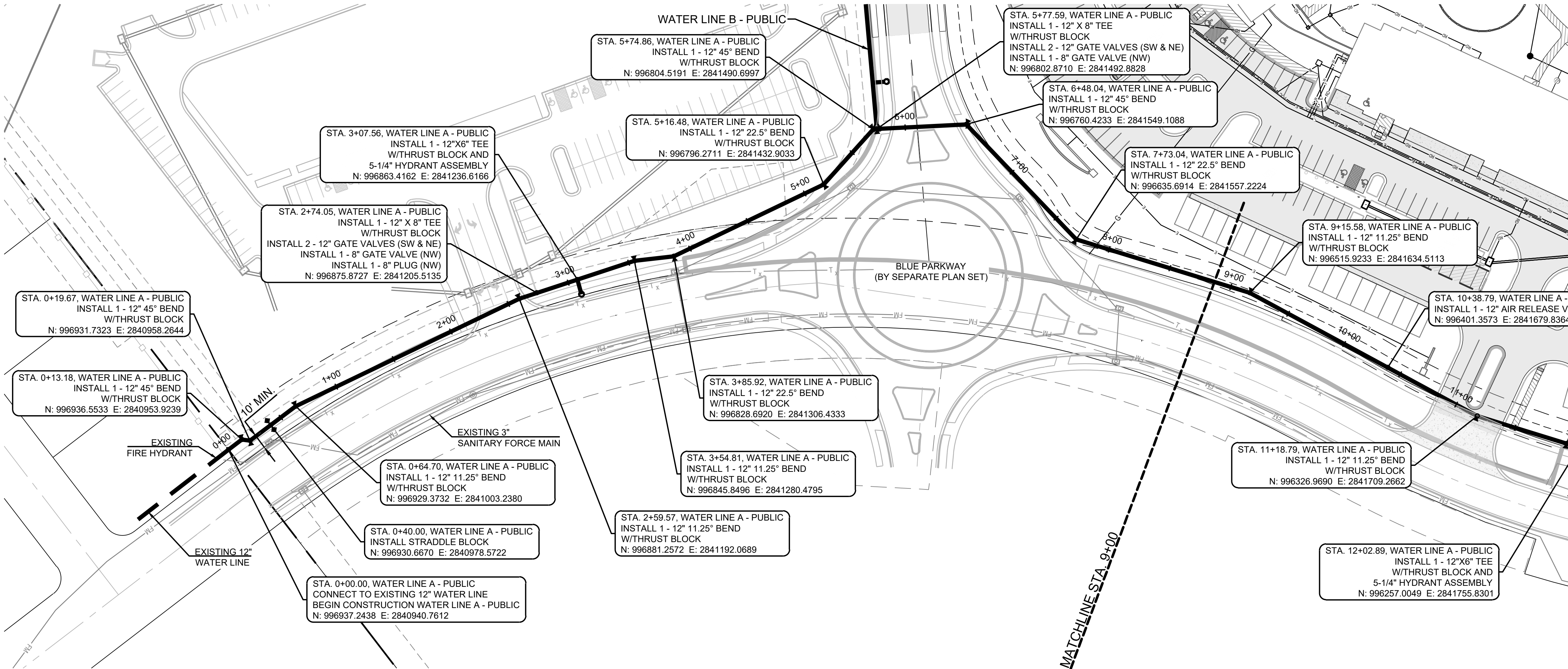
HERITAGE STREET LEE'S SUMMIT, MO

REVISION DATE	DESCRIPTION
1 01/23/2023	PER CITY COMMENTS
2 03/24/2023	PER CITY COMMENTS
3	
4	
5	
6	
7	
8	
9	

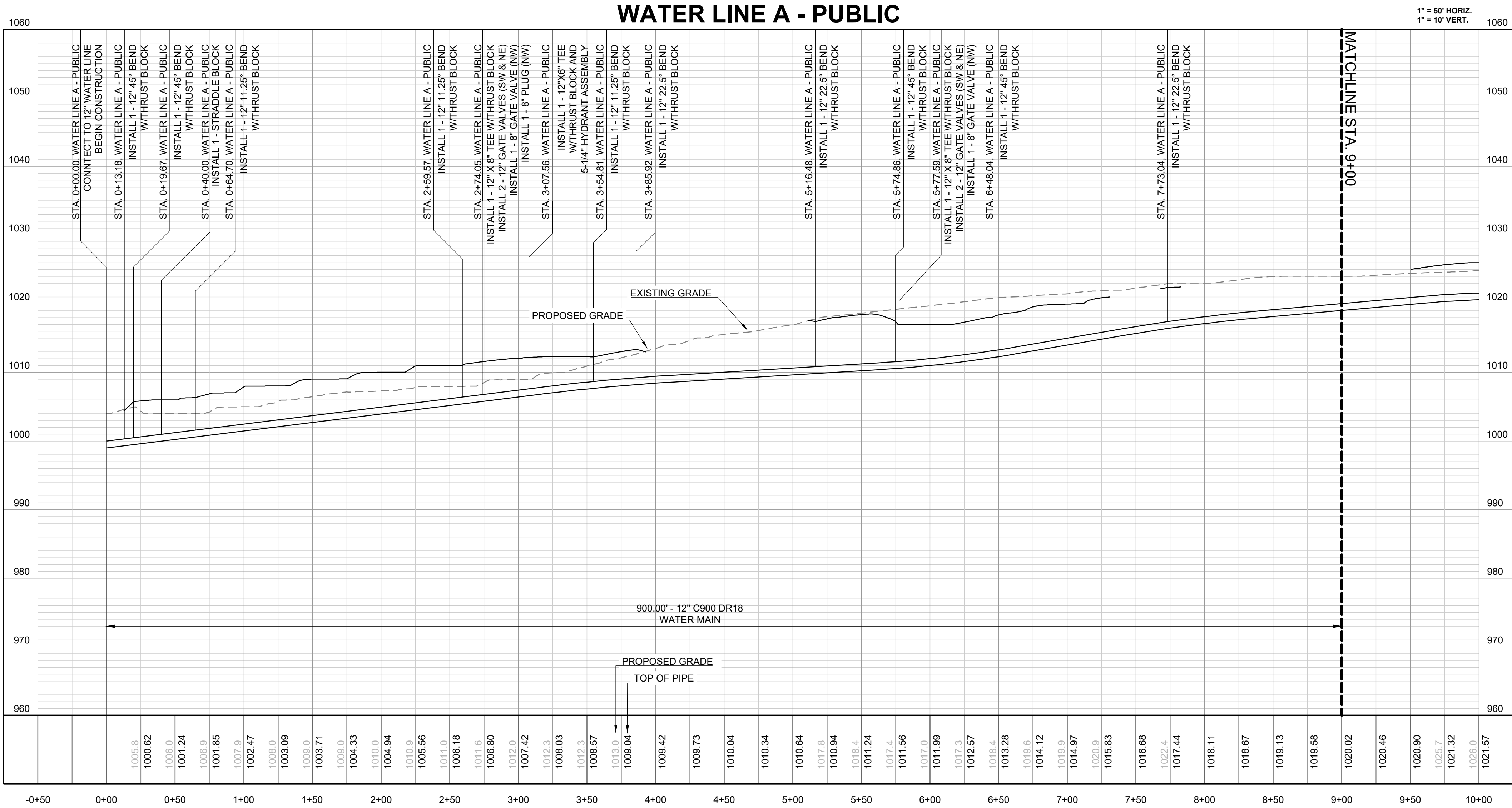
WATER LINE A -
PUBLIC

SHEET

3



WATER LINE A - PUBLIC



STA. 5+77.59, WATER LINE A - PUBLIC
INSTALL 1 - 12" X 8" TEE
W/THRUST BLOCK
INSTALL 2 - 12" GATE VALVES (SW & NE)
INSTALL 1 - 8" GATE VALVE (NW)
N: 996802.8710 E: 2841492.8828

STA. 6+48.04, WATER LINE A - PUBLIC
INSTALL 1 - 12" 45° BEND
W/THRUST BLOCK
N: 996760.4233 E: 2841549.1088

STA. 7+73.04, WATER LINE A - PUBLIC
INSTALL 1 - 12" 22.5° BEND
W/THRUST BLOCK
N: 996335.6914 E: 2841557.2224

STA. 9+15.58, WATER LINE A - PUBLIC
INSTALL 1 - 12" 11.25° BEND
W/THRUST BLOCK
N: 996515.9233 E: 2841634.5113

STA. 10+38.79, WATER LINE A - PUBLIC
INSTALL 1 - 12" AIR RELEASE VALVE ASSEMBLY
N: 996401.3573 E: 2841679.8364

STA. 11+92.12, WATER LINE A - PUBLIC
INSTALL 1 - 12" 11.25° BEND
W/THRUST BLOCK
N: 996265.3474 E: 2841749.0319

STA. 16+65.79, WATER LINE A - PUBLIC
INSTALL 1 - 12" X 8" TEE
W/THRUST BLOCK
INSTALL 2 - 12" GATE VALVES (SW & NE)
INSTALL 1 - 8" GATE VALVE (NW)
INSTALL 1 - 8" PLUG (NW)
N: 995980.4966 E: 2842117.6811

STA. 16+86.14, WATER LINE A - PUBLIC
INSTALL 1 - 12" 90° BEND
W/THRUST BLOCK
N: 995974.3694 E: 2842136.8584

STA. 16+92.72, WATER LINE A - PUBLIC
INSTALL 1 - 12" X 12" TEE
W/THRUST BLOCK
INSTALL 3 - 12" GATE VALVES (N, NE & SW)
CONNECT TO EXISTING 12" WATER LINE
END CONSTRUCTION WATER LINE A - PUBLIC
N: 995968.0645 E: 2842134.9631

STA. 16+45.92, WATER LINE A - PUBLIC
INSTALL STRADDLE BLOCK
N: 995986.3459 E: 2842098.6903

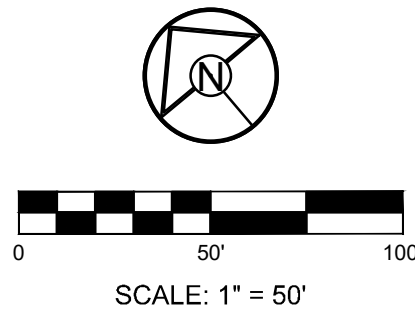
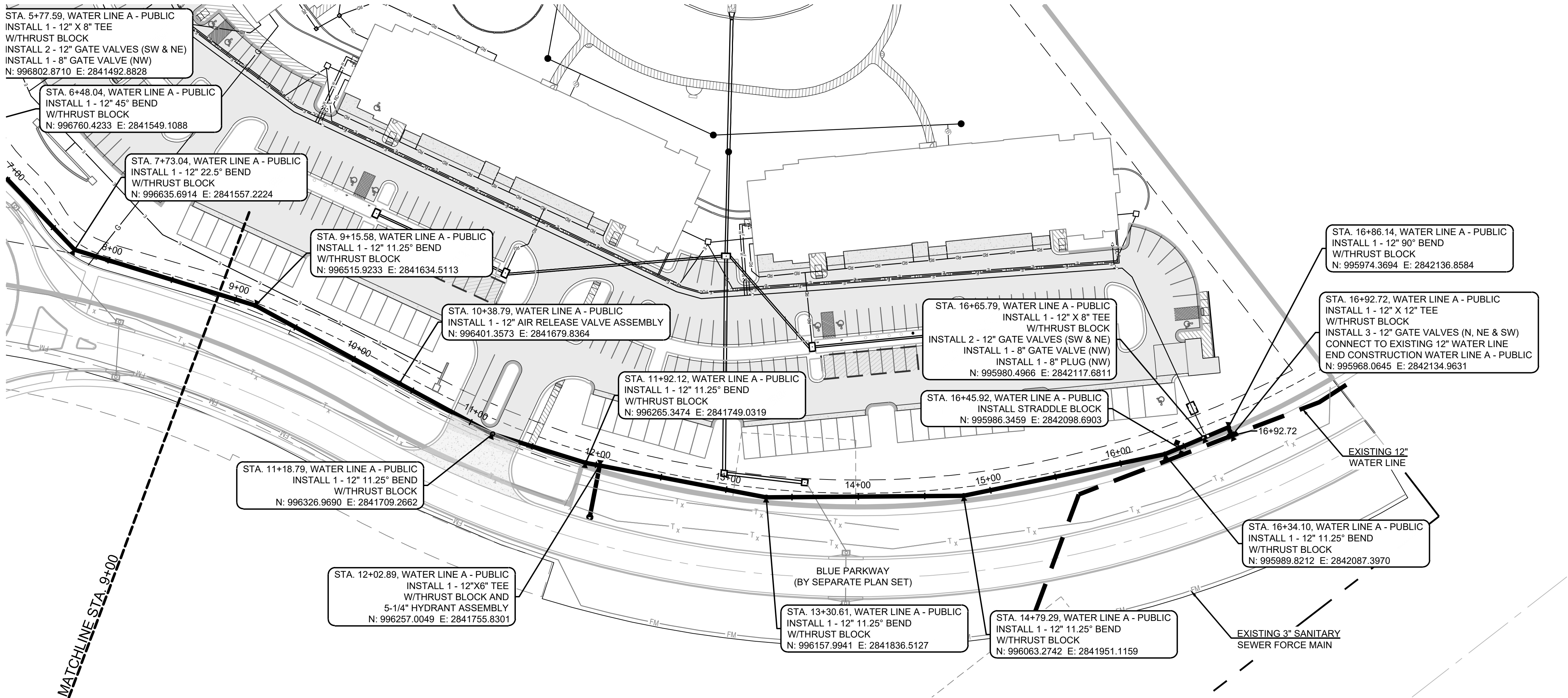
STA. 16+34.10, WATER LINE A - PUBLIC
INSTALL 1 - 12" 11.25° BEND
W/THRUST BLOCK
N: 995989.8212 E: 2842087.3970

STA. 13+30.61, WATER LINE A - PUBLIC
INSTALL 1 - 12" 11.25° BEND
W/THRUST BLOCK
N: 996157.9941 E: 2841836.5127

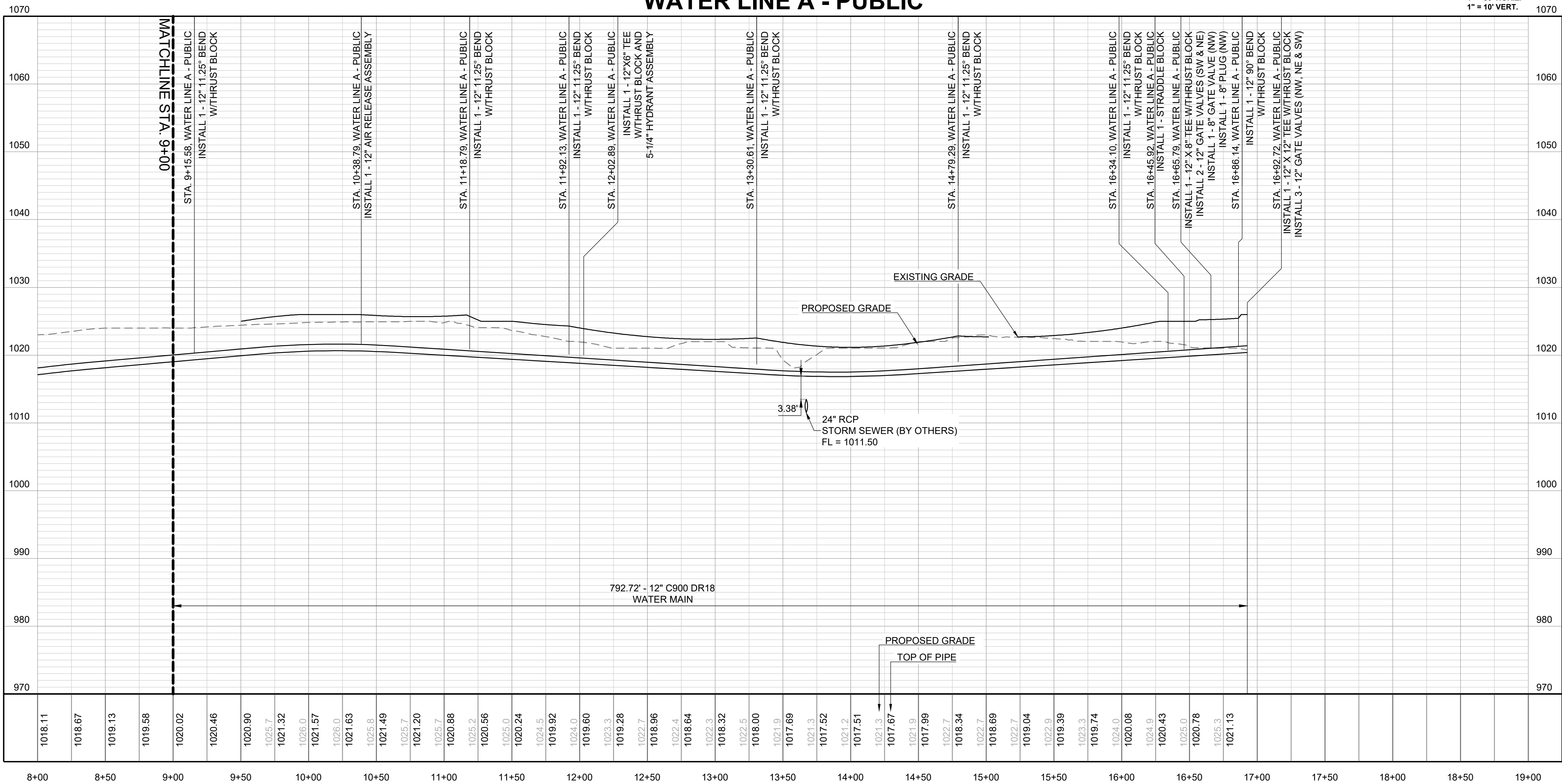
STA. 14+79.29, WATER LINE A - PUBLIC
INSTALL 1 - 12" 11.25° BEND
W/THRUST BLOCK
N: 996063.2742 E: 2841951.1159

STA. 12+02.89, WATER LINE A - PUBLIC
INSTALL 1 - 12"X6" TEE
W/THRUST BLOCK AND
5-1/4" HYDRANT ASSEMBLY
N: 996257.0049 E: 2841755.8301

STA. 11+18.79, WATER LINE A - PUBLIC
INSTALL 1 - 12" 11.25° BEND
W/THRUST BLOCK
N: 996326.9690 E: 2841709.2662



WATER LINE A - PUBLIC



MO GRS BENCHMARK:

STATION NAME - JA-90

KC METRO ALUMINUM GRS DISK SET IN CONCRETE STAMPED "JA-90, 1988"
LOCATED NEAR THE INTERSECTION OF LANGSFORD ROAD AND OLD
LANGSFORD ROAD, 43 FEET SOUTHEAST OF THE CENTER OF LANGSFORD
ROAD AND 32 FEET NORTH OF THE CENTER OF OLD LANGSFORD ROAD.
N:1001052.8503, E:2845604.8272

ELEV. 997.045

PROJECT BENCHMARK:

"SQUARE" CUT IN TOP OF CONCRETE STORM MANHOLE
STORM MANHOLE IS LOCATED APPROX. 130 FEET EAST OF THE
INTERSECTION OF SE JOEL AVE & BLUE PARKWAY AND 26 FEET SOUTH
OF THE CENTERLINE OF BLUE PARKWAY.
N:996874.9690, E:2840937.1365

ELEV. 1005.719

NOTES:

- ALL CONSTRUCTION ON THIS PROJECT
SHALL CONFORM TO THE CITY OF LEE'S
SUMMIT TECHNICAL SPECIFICATIONS.
- THE CONTRACTOR IS RESPONSIBLE FOR
VERIFYING ALL EXISTING UTILITY LOCATIONS
PRIOR TO EXCAVATION.



PREPARED BY:



SCHLAGEL & ASSOCIATES, P.A.

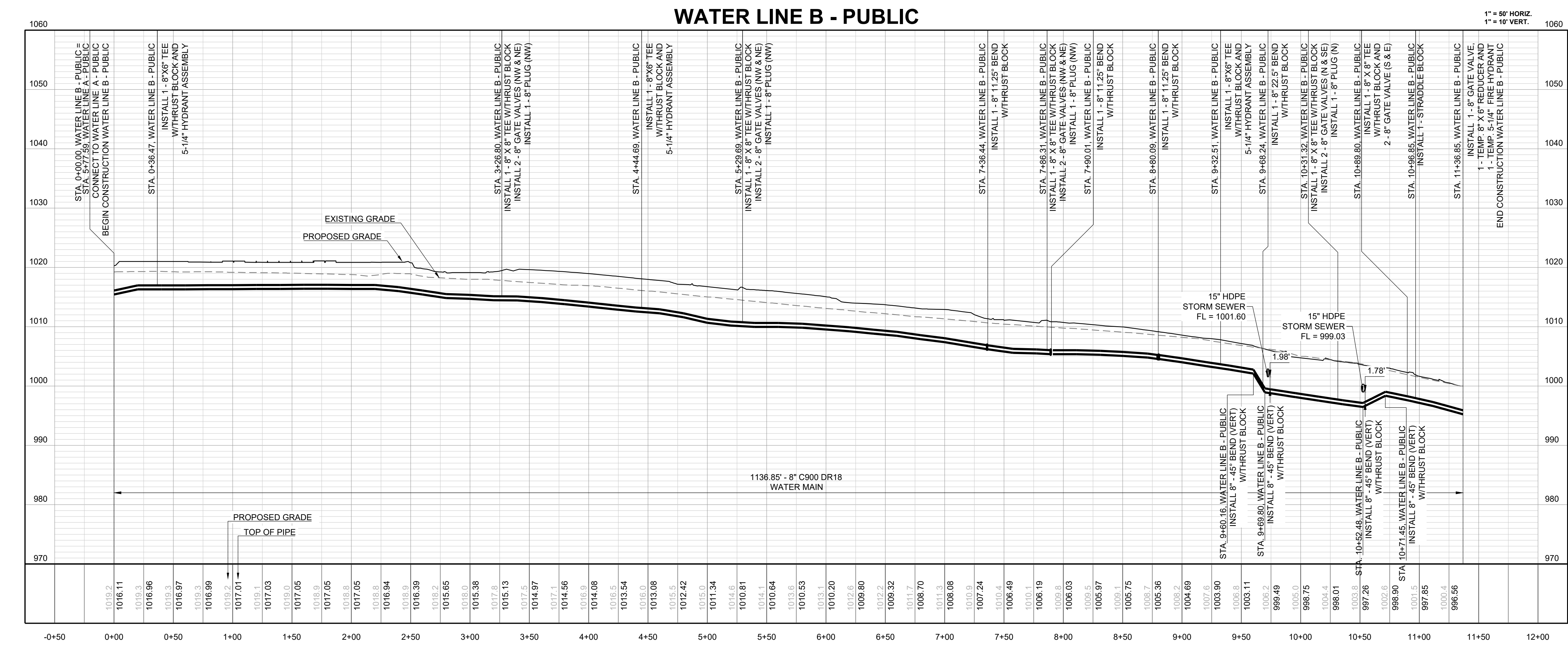
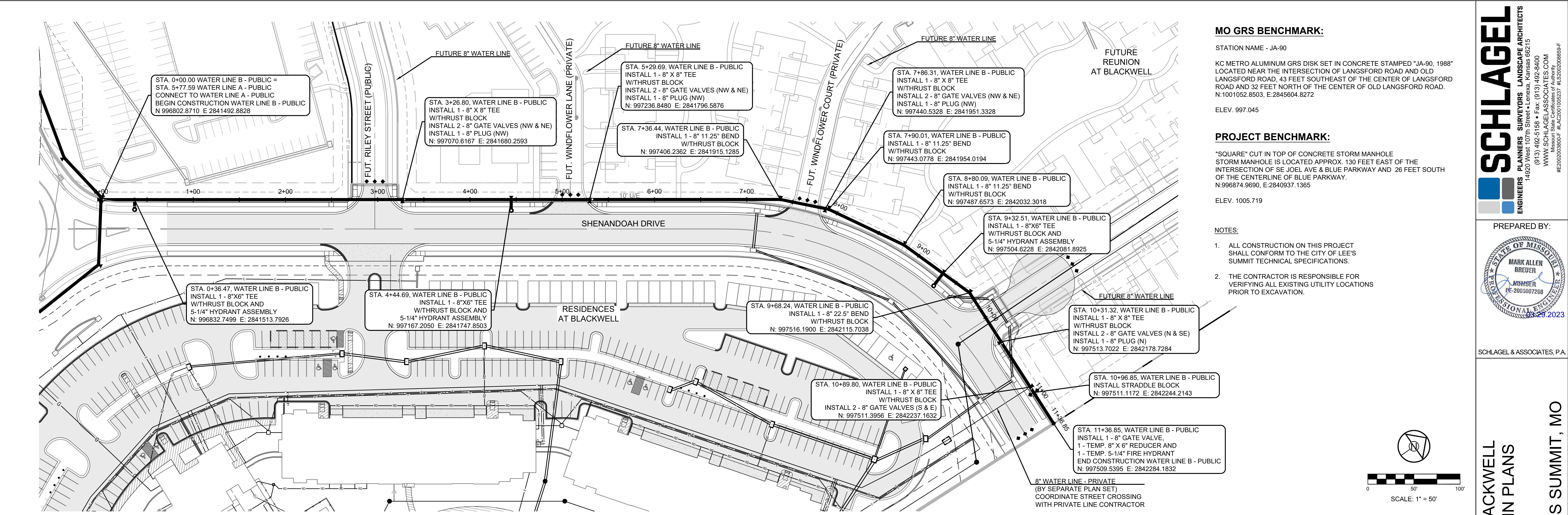
RESIDENCES AT BLACKWELL
PUBLIC WATER MAIN PLANS

HERITAGE STREET LEE'S SUMMIT, MO

REVISION DATE	DESCRIPTION	PER CITY COMMENTS
01/23/2023	TRC	
03/24/2023	MAB	
11/30/2022	DATE PREPARED	
22-102	PROJ. NUMBER:	

WATER LINE A - PUBLIC

SHEET
4



SCHLAGEL

ENGINEERS PLANNERS SURVEYORS LANDSCAPE ARCHITECTS

14920 West 10th Street • Lenexa, Kansas 66215

(913) 492-5158 • Fax: (913) 492-8400

WWW.SCHLAGELASSOCIATES.COM

Missouri State Certificates of Authority

#E200200360F #LAC201003237 #LS200200859F

PREPARED BY:

MARK ALLEN BREUER

NUMBER

PE-2003007268

03-29-2023

SCHLAGEL & ASSOCIATES, P.A.

RESIDENCES AT BLACKWELL
PUBLIC WATER MAIN PLANS

HERITAGE STREET LEE'S SUMMIT, MO

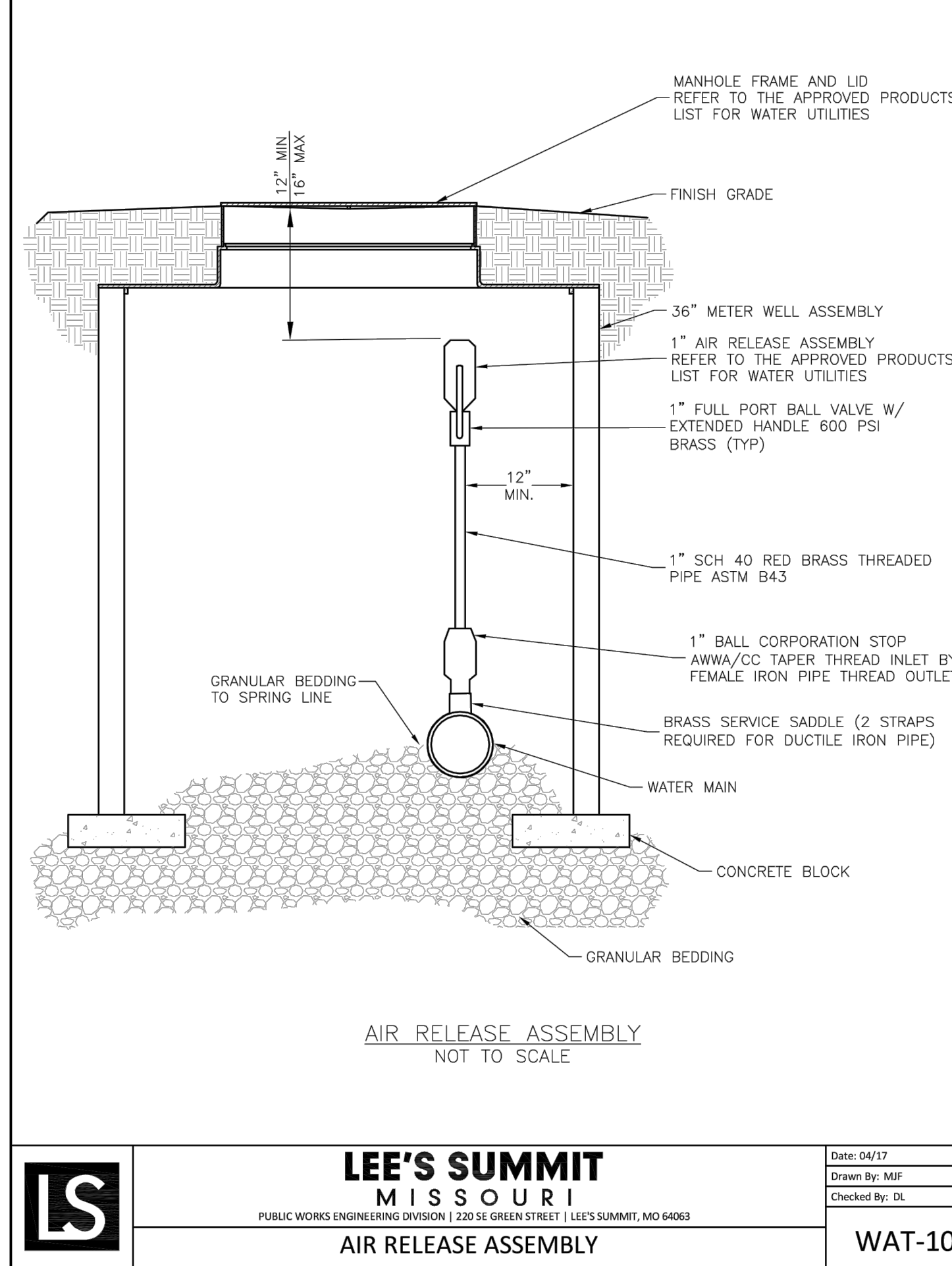
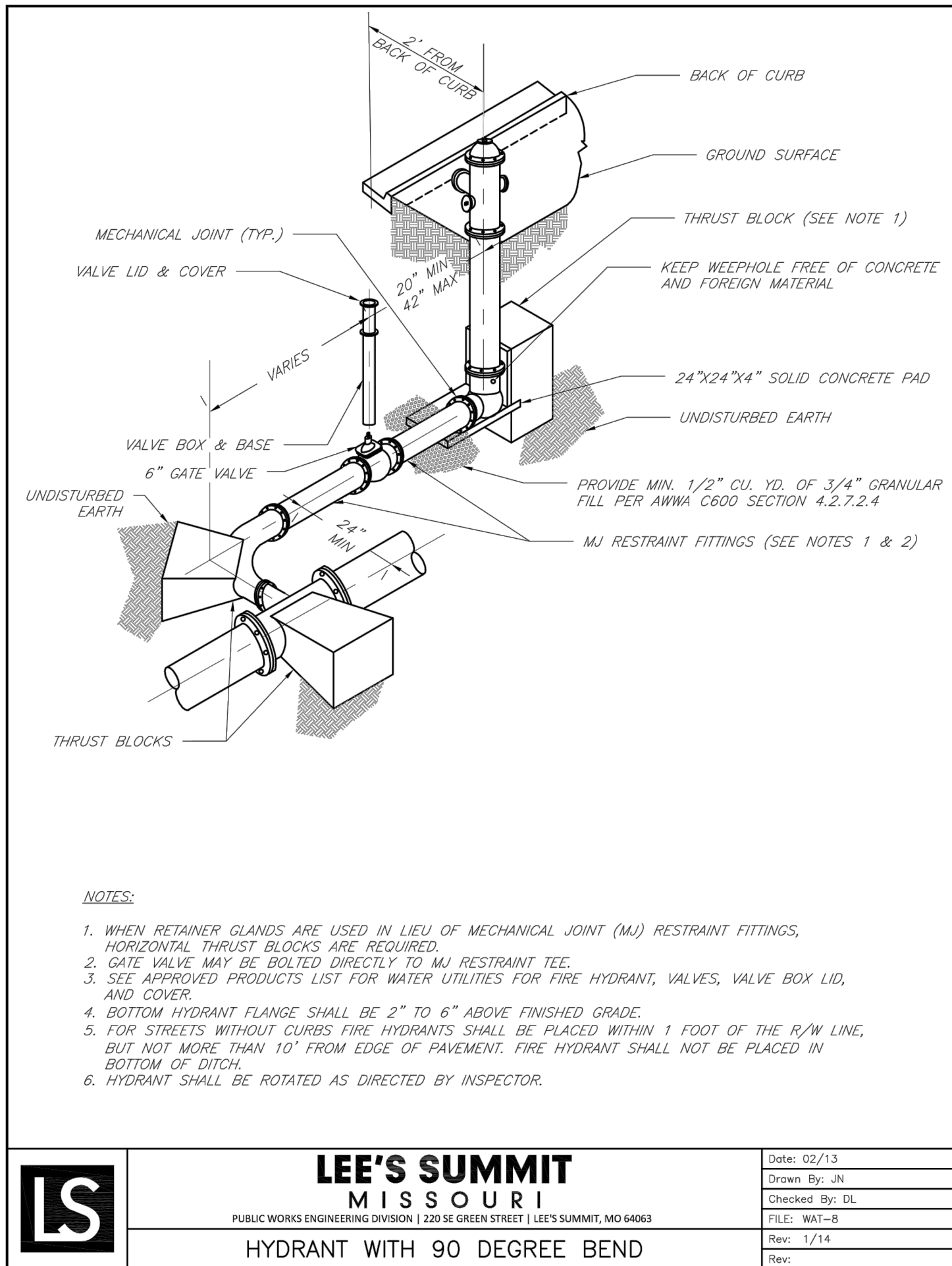
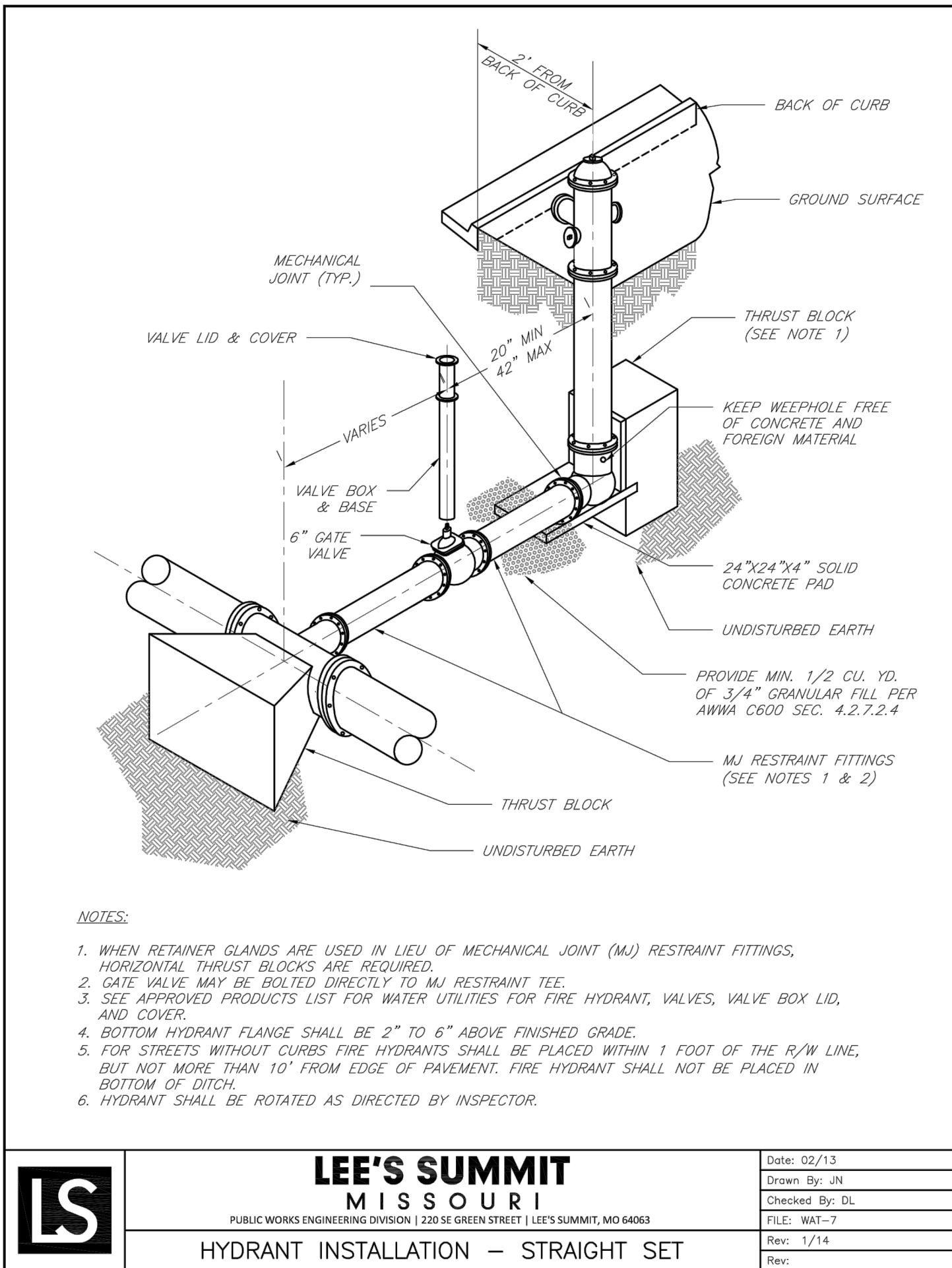
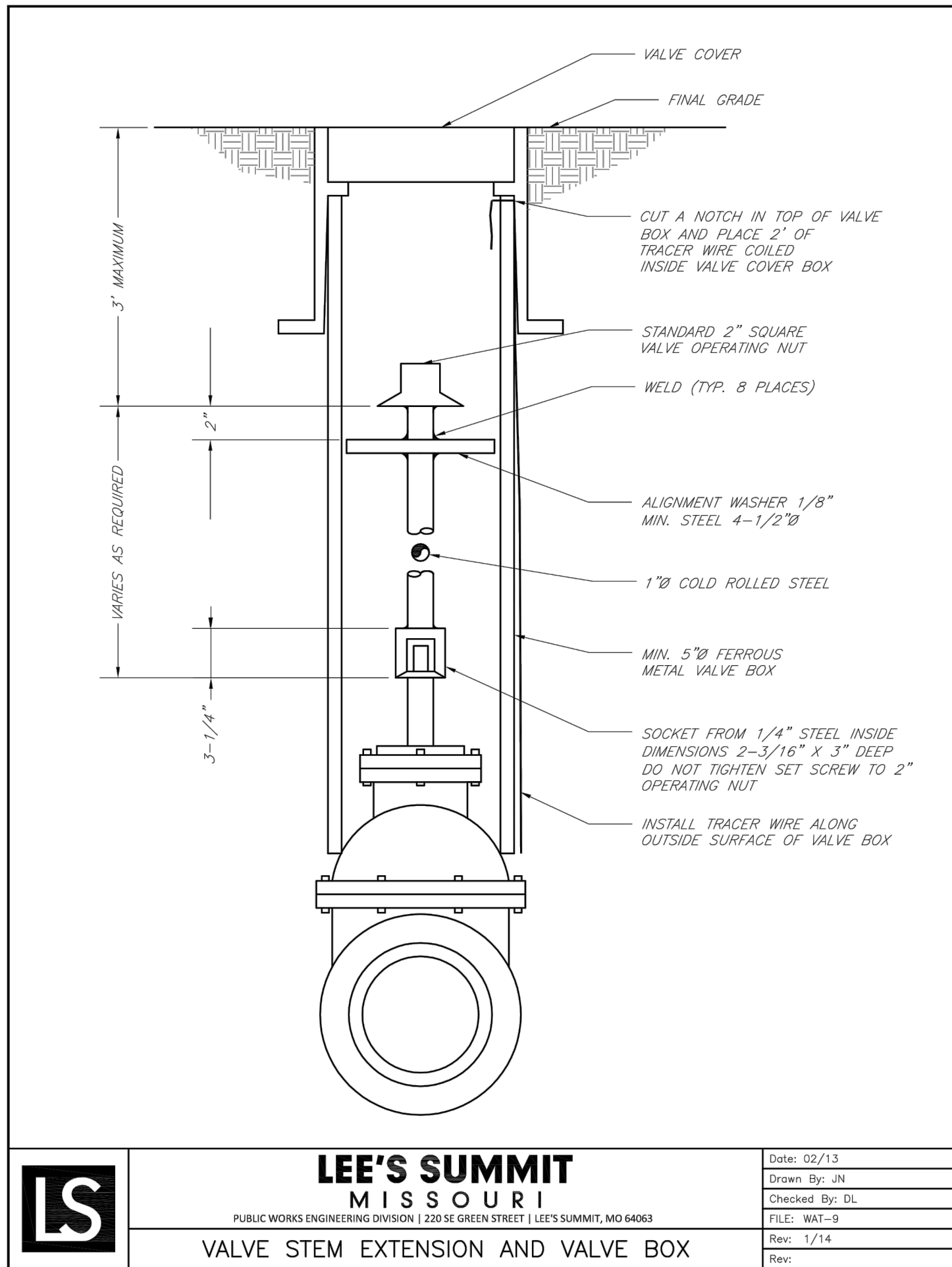
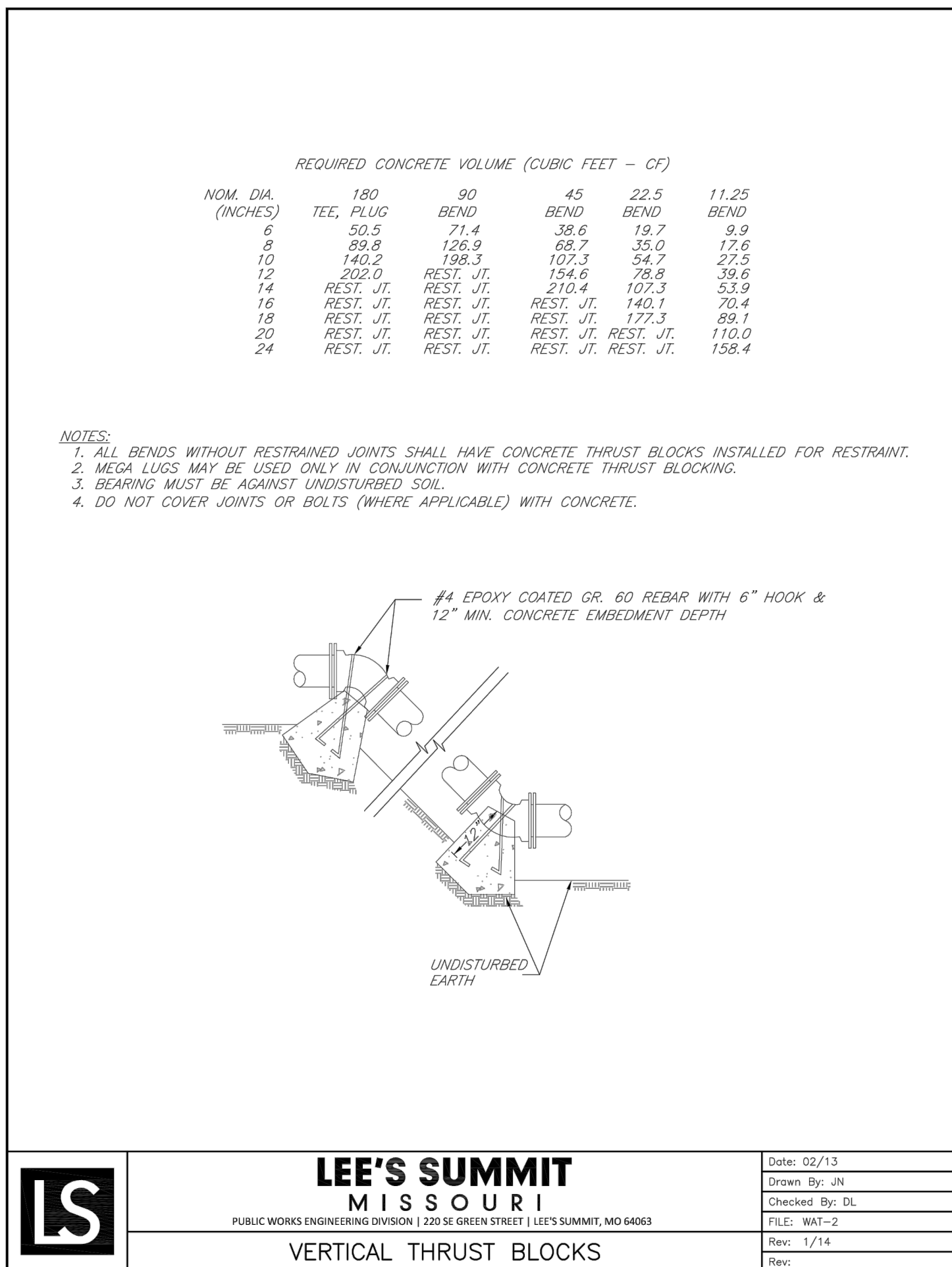
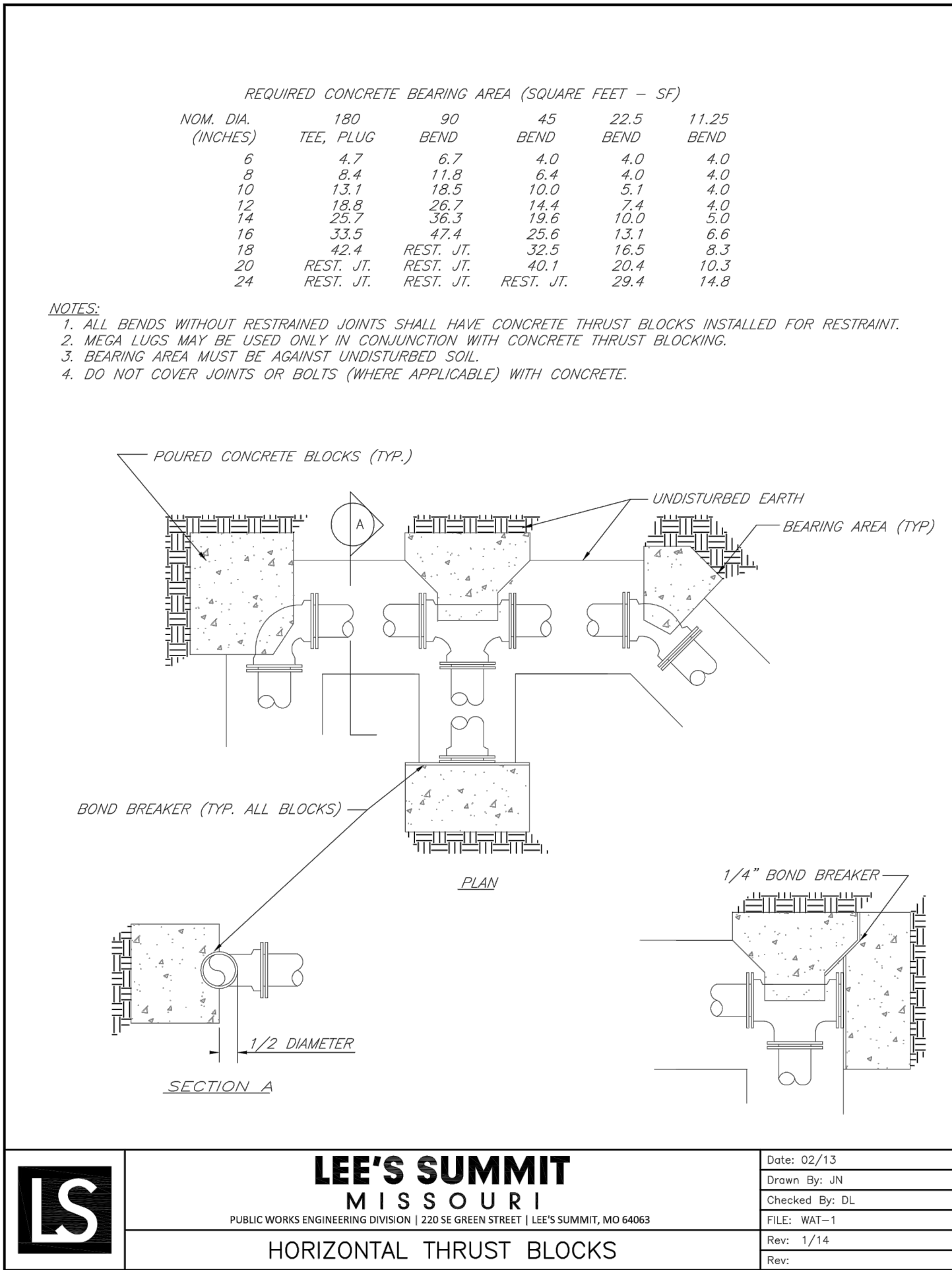
REVISION	DATE	DESCRIPTION
1	01/23/2023	PER CITY COMMENTS
2	03/24/2023	PER CITY COMMENTS
3		
4		
5		
6		
7		
8		
9		
10		

DRAWN BY:	TRC
CHECKED BY:	MAB
DATE PREPARED:	11/30/2022
PROJ. NUMBER:	22-102

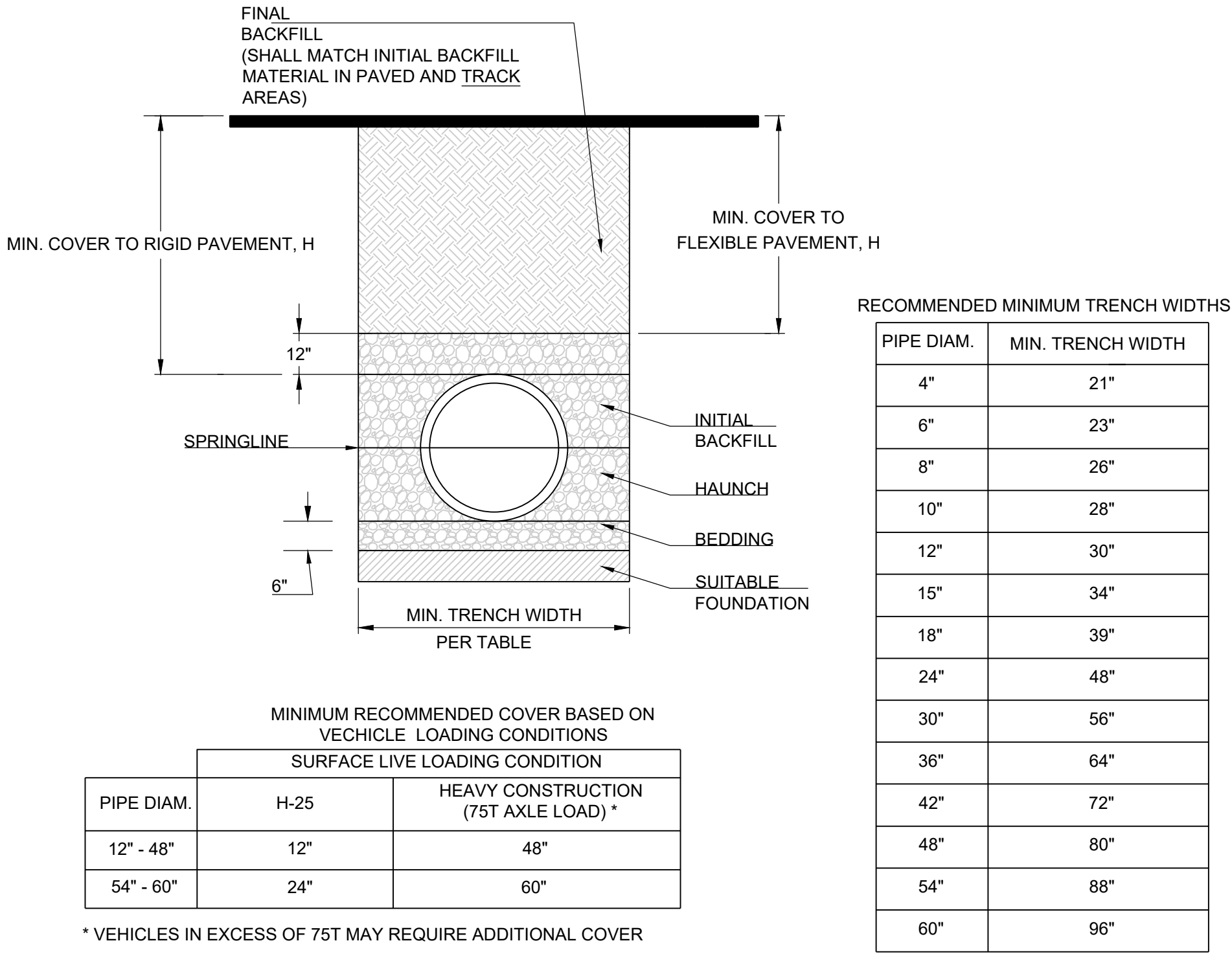
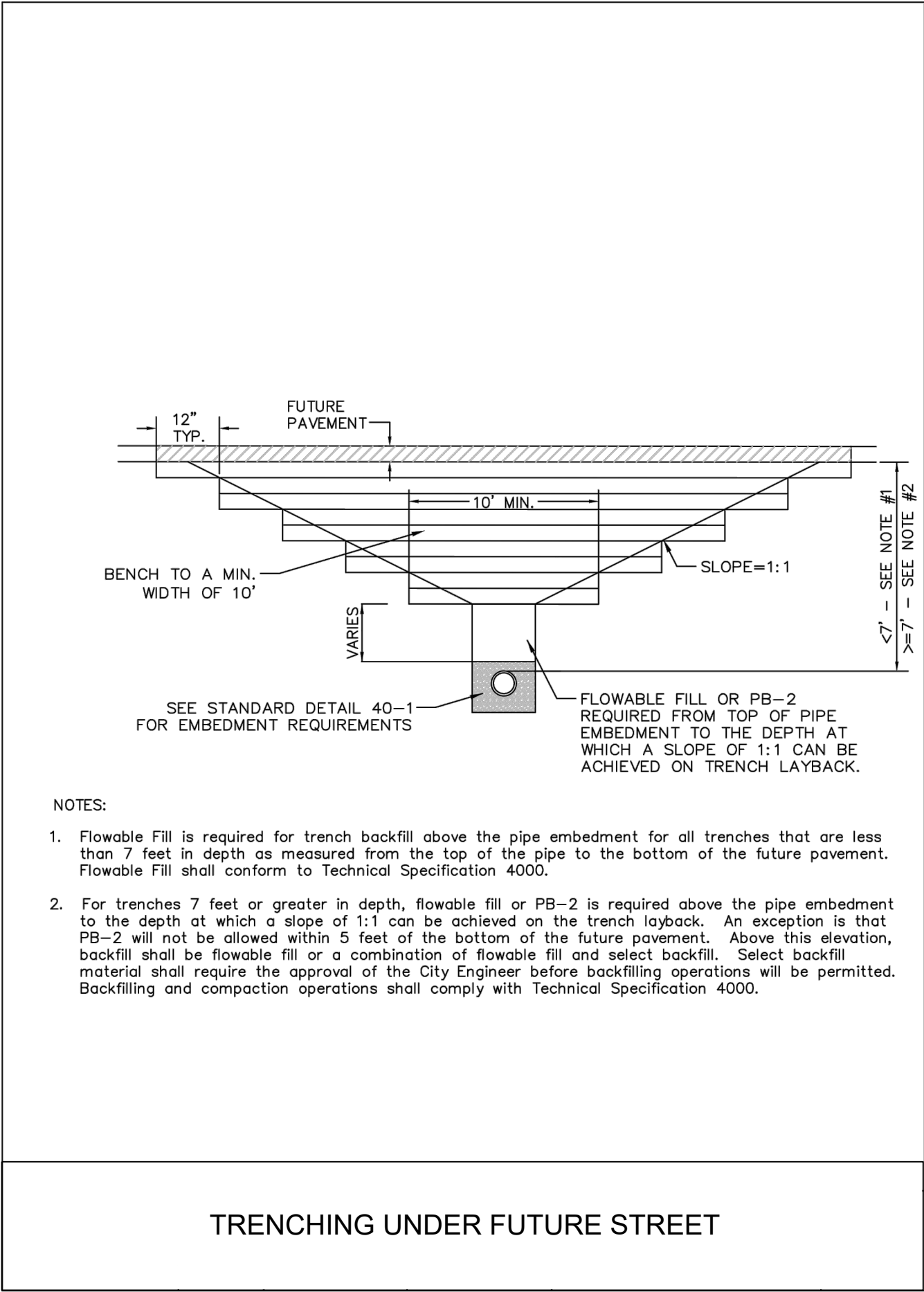
WATER LINE B - PUBLIC

SHEET

5



REVISION DATE	DESCRIPTION	PER CITY COMMENTS
1 01/23/2023	TRC	
2 03/24/2023	MAB	
3		
4		
5		
6		
7 11/30/2022	DATE PREPARED	
8	PROJ. NUMBER:	
9 22-102		



- * VEHICLES IN EXCESS OF 75T MAY REQUIRE ADDITIONAL COVER
- NOTES:
- ALL PIPE SYSTEMS SHALL BE INSTALLED IN ACCORDANCE WITH ASTM D2321, "STANDARD PRACTICE FOR UNDERGROUND INSTALLATION OF THERMOPLASTIC PIPE FOR SEWERS AND OTHER GRAVITY FLOW APPLICATIONS", LATEST EDITION
 - MEASURES SHOULD BE TAKEN TO PREVENT MIGRATION OF NATIVE FINES INTO BACKFILL MATERIAL, WHEN REQUIRED.
 - FOUNDATION:** WHERE THE TRENCH BOTTOM IS UNSTABLE, THE CONTRACTOR SHALL EXCAVATE TO A DEPTH REQUIRED BY THE ENGINEER AND REPLACE WITH SUITABLE MATERIAL AS SPECIFIED BY THE ENGINEER. AS AN ALTERNATIVE AND AT THE DISCRETION OF THE DESIGN ENGINEER, THE TRENCH BOTTOM MAY BE STABILIZED USING A GEOTEXTILE MATERIAL.
 - BEDDING:** SUITABLE MATERIAL SHALL BE CLASS I, II OR III. THE CONTRACTOR SHALL PROVIDE DOCUMENTATION FOR MATERIAL SPECIFICATION TO ENGINEER. UNLESS OTHERWISE NOTED BY THE ENGINEER, MINIMUM BEDDING THICKNESS SHALL BE 6" (100mm) .
 - INITIAL BACKFILL:** SUITABLE MATERIAL SHALL BE CLASS I, II OR III IN THE PIPE ZONE EXTENDING NOT LESS THAN 6" ABOVE CROWN OF PIPE. THE CONTRACTOR SHALL PROVIDE DOCUMENTATION FOR MATERIAL SPECIFICATION TO ENGINEER. MATERIAL SHALL BE INSTALLED AS REQUIRED IN ASTM D2321, LATEST EDITION.
 - MINIMUM COVER:** MINIMUM COVER, H, IN NON-TRAFFIC APPLICATIONS (GRASS OR LANDSCAPE AREAS) IS 12" FROM THE TOP OF PIPE TO GROUND SURFACE. ADDITIONAL COVER MAY BE REQUIRED TO PREVENT FLOATATION. FOR TRAFFIC APPLICATIONS, MINIMUM COVER, H, IS 12" UP TO 48" DIAMETER PIPE AND 24" OF COVER FOR 54"-60" DIAMETER PIPE, MEASURED FROM TOP OF PIPE TO BOTTOM OF FLEXIBLE PAVEMENT OR TO TOP OF RIGID PAVEMENT.

REVISION DATE	DESCRIPTION
1 01/23/2023	PER CITY COMMENTS
2 03/24/2023	PER CITY COMMENTS
3	
4	
5	
6	
7	
8	

DRAWN BY:	TRC
CHECKED BY:	MAB
DATE PREPARED:	11/30/2022
PROJ. NUMBER:	22-102