

MIDWEST ARCHITECTS  
1120 NW Eagle Ridge Blvd.  
Grain Valley, Missouri 64029  
t: (816) 229-8115

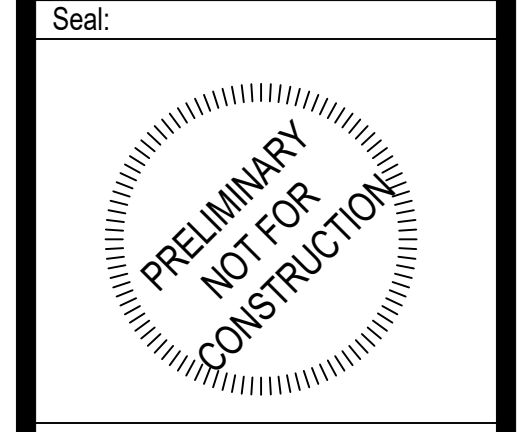
Client:  
Ward Development  
1120 NW Eagle Ridge Blvd.  
Grain Valley, Missouri 64029  
t: (816) 229-8115

Consultants:  
Civil Engineering:  
Engineering Solutions  
50 SE 30th Street  
Lee's Summit, Missouri 64082  
t: (816) 623-9888

Structural Engineering:  
Needham DBS  
15950 College Blvd  
Lenexa, KS 66219  
t: (813) 385-5300

MEP Engineering:  
JSC Engineers  
1925 Central Street, Suite 201  
Kansas City, MO 64108  
t: (816) 272-5289

Revisions to technical submissions which are not made or approved by the licensee are prohibited.



Project Number: 22-245  
Project Type: NEW CONSTRUCTION  
Project Name and Address:

**TOWN CENTRE 22, LOT 4**  
NE Town Centre Blvd  
Lee's Summit, Missouri 64064

Issue: Bid Set  
Date: 02.27.23

Sheet Title:  
SITE  
PHOTOMETRIC

**E-002**

**KEYED PLAN NOTES**

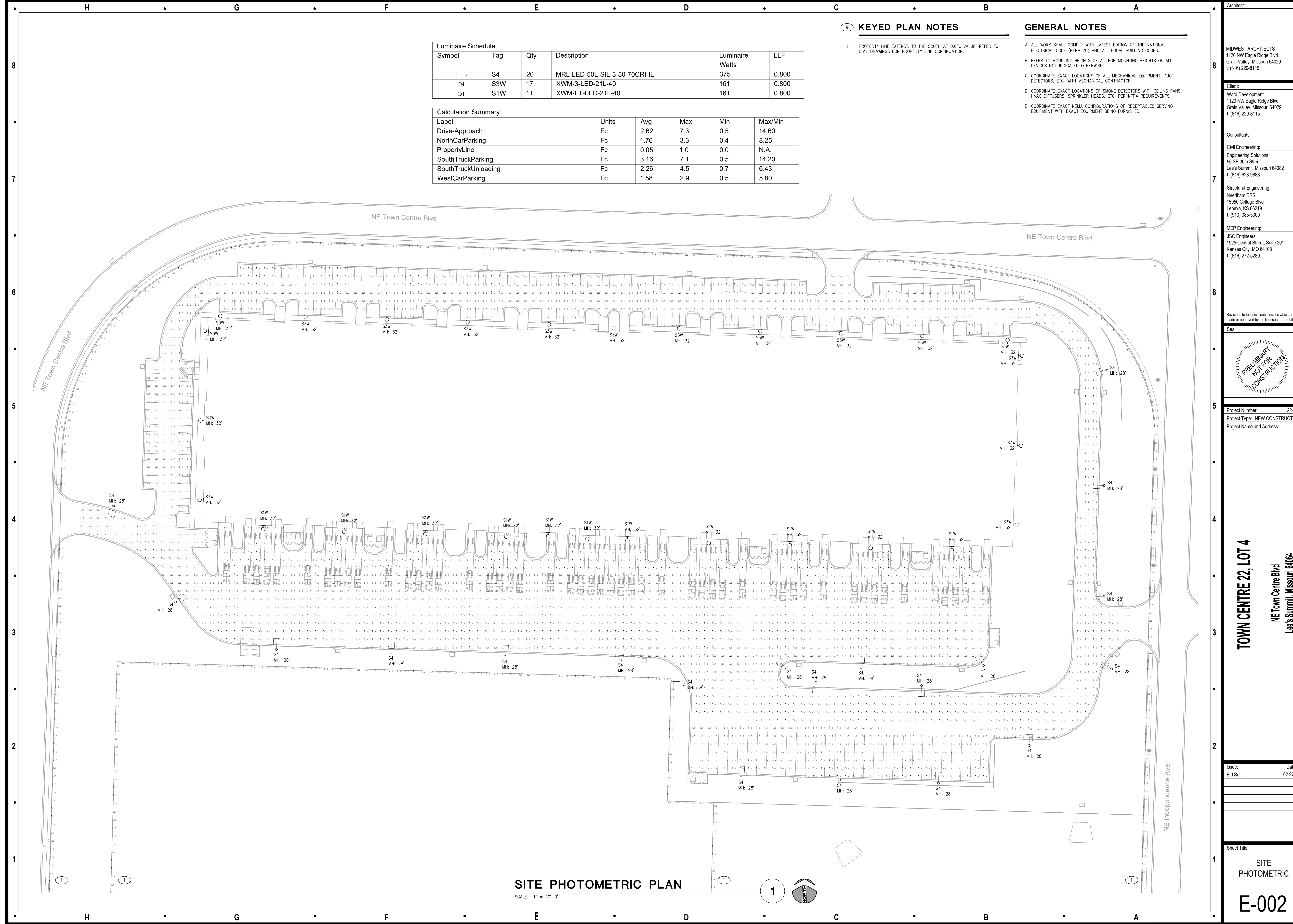
- 1. PROPERTY LINE EXTENDS TO THE SOUTH AT 0.0FC VALUE. REFER TO CIVIL DRAWINGS FOR PROPERTY LINE CONTINUATION.

**GENERAL NOTES**

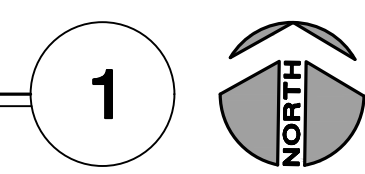
- A ALL WORK SHALL COMPLY WITH LATEST EDITION OF THE NATIONAL ELECTRICAL CODE (NFPA 70) AND ALL LOCAL BUILDING CODES.
- B REFER TO MOUNTING HEIGHTS DETAIL FOR MOUNTING HEIGHTS OF ALL DEVICES NOT INDICATED OTHERWISE.
- C COORDINATE EXACT LOCATIONS OF ALL MECHANICAL EQUIPMENT, DUCT DETECTORS, ETC. WITH MECHANICAL CONTRACTOR.
- D COORDINATE EXACT LOCATIONS OF SMOKE DETECTORS WITH CEILING FANS, HVAC DIFFUSERS, SPRINKLER HEADS, ETC. PER NFPA REQUIREMENTS.
- E COORDINATE EXACT NEMA CONFIGURATIONS OF RECEPTACLES SERVING EQUIPMENT WITH EXACT EQUIPMENT BEING FURNISHED.

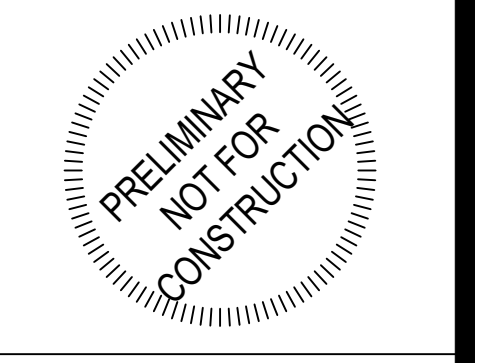
Luminaire Schedule					
Symbol	Tag	Qty	Description	Luminaire Watts	LLF
□-○	S4	20	MRL-LED-50L-SIL-3-50-70CRI-IL	375	0.800
○-I	S3W	17	XWM-3-LED-21L-40	161	0.800
○-I	S1W	11	XWM-FT-LED-21L-40	161	0.800

Calculation Summary						
Label	Units	Avg	Max	Min	Max/Min	
Drive-Approach	Fc	2.62	7.3	0.5	14.60	
NorthCarParking	Fc	1.76	3.3	0.4	8.25	
PropertyLine	Fc	0.05	1.0	0.0	N.A.	
SouthTruckParking	Fc	3.16	7.1	0.5	14.20	
SouthTruckUnloading	Fc	2.26	4.5	0.7	6.43	
WestCarParking	Fc	1.58	2.9	0.5	5.80	



**SITE PHOTOMETRIC PLAN**  
SCALE: 1" = 40'-0"





TOWN CENTRE 22, LOT 4  
NE Town Centre Blvd  
Lee's Summit, Missouri 64064

### KEYED SITE PLAN NOTES

- BUILDING MOUNTED EXTERIOR LIGHT FIXTURES SHOWN ON PLAN DRAWINGS E101 AND E102.
- PROPOSED UTILITY TRANSFORMER LOCATION. REFER TO SINGLE LINE DIAGRAM ON SHEET E201 FOR MORE INFORMATION. COORDINATE REQUIREMENT OF PAD MOUNT WITH ENERGY. PROTECT WITH BOLLARDS.
- PROPOSED UTILITY SECONDARY CONDUIT/CONDUCTOR ROUTE. REFER TO SINGLE LINE DIAGRAM ON SHEET E201 FOR MORE INFORMATION. COORDINATE WITH UTILITY SERVICE EQUIPMENT LOCATIONS PRIOR TO CONSTRUCTION.
- ELECTRICAL SERVICE ENTRANCE METER ENCLOSURES AND DISCONNECT. REFER TO SINGLE LINE DIAGRAM ON SHEET E201 FOR MORE INFORMATION.
- PROPOSED UTILITY PRIMARY CONDUIT/CONDUCTOR ROUTE. REFER TO SINGLE LINE DIAGRAM ON SHEET E201 FOR MORE INFORMATION. COORDINATE WITH UTILITY PRIOR TO CONSTRUCTION.
- SITE LIGHTING POLE. REFER TO LIGHT FIXTURE SCHEDULE ON SHEET E201 FOR MORE INFORMATION.
- PROVIDE IN-GRADE PULLBOXES TO FACILITATE COMMUNICATIONS ROUTING TO PROPERTY LINE. QUARTZITE, AASHTO H-20 RATED FOR HEAVY, DELIBERATE VEHICULAR TRAFFIC. DO NOT INSTALL AT A LOW POINT. COORDINATE ENCLOSURE DRAINING WITH CIVIL ENGINEER.
- ROUTE CIRCUIT THROUGH SITE LIGHTING CONTACTOR.
- (2) 1-1/2" CONDUITS WITH PULL STRINGS TO LOCATION OF MONUMENT SIGN. TERMINATE CONDUIT IN IN-GRADE QUARTZITE BOX. MONUMENT SIGN WILL BE UNDER A SEPARATE PERMIT.
- (2) 4" CONDUITS WITH PULL STRINGS FOR TEL/COM ROUTING.

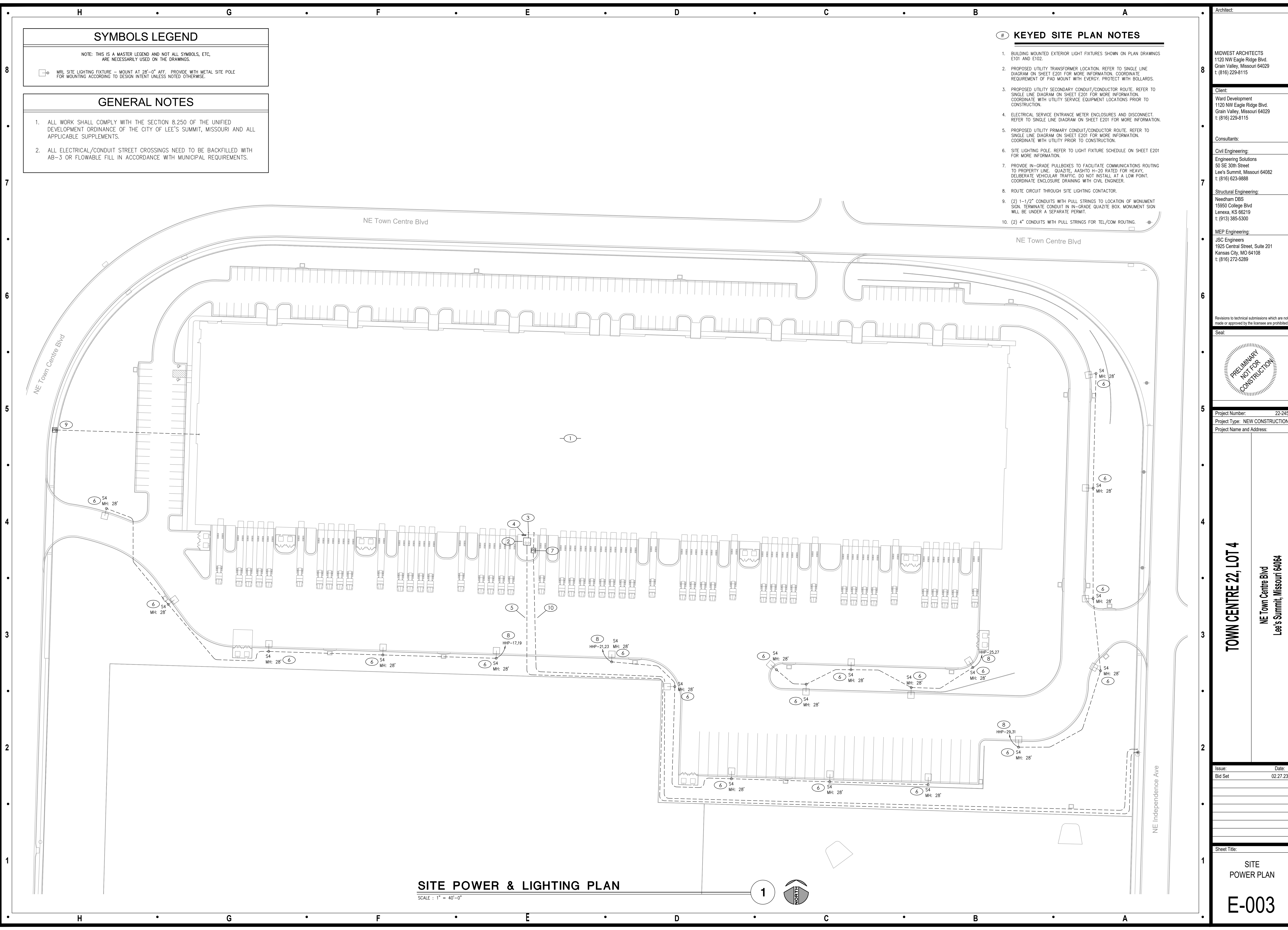
### SYMBOLS LEGEND

NOTE: THIS IS A MASTER LEGEND AND NOT ALL SYMBOLS, ETC., ARE NECESSARILY USED ON THE DRAWINGS.

□ ○ MRL SITE LIGHTING FIXTURE - MOUNT AT 28'-0" AFF. PROVIDE WITH METAL SITE POLE FOR MOUNTING ACCORDING TO DESIGN INTENT UNLESS NOTED OTHERWISE.

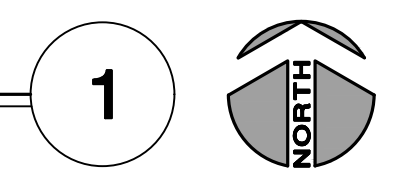
### GENERAL NOTES

- ALL WORK SHALL COMPLY WITH THE SECTION 8.250 OF THE UNIFIED DEVELOPMENT ORDINANCE OF THE CITY OF LEE'S SUMMIT, MISSOURI AND ALL APPLICABLE SUPPLEMENTS.
- ALL ELECTRICAL/CONDUIT STREET CROSSINGS NEED TO BE BACKFILLED WITH AB-3 OR FLOWABLE FILL IN ACCORDANCE WITH MUNICIPAL REQUIREMENTS.



### SITE POWER & LIGHTING PLAN

SCALE : 1" = 40'-0"



LIGHTING FIXTURES 'S1W' AND 'S3W'

Catalog #:
Project:

Prepared By:
Date:
Type:

## Mirada Medium Wall Sconce (XWM)

Outdoor Wall Sconce



**OVERVIEW**

Lumen Range	3,000 - 21,000
Wattage Range	23 - 175
Efficacy Range (LPW)	125 - 158
Weight (lbs/kg)	30 (13.6)

**QUICK LINKS**

[Ordering Guide](#) | 
 [Performance](#) | 
 [Photometrics](#) | 
 [Dimensions](#)

Catalog #:
Project:

## Mirada Wall Sconce (XWM)

[Back to Quick Links](#)

**TYPICAL ORDER EXAMPLE:** XWM 2 LED 50 30 UE BRZ ALSC

Family	Distribution	LED Technology	Lumen Package	Color Temperature	Voltage
XWM - Mirada Medium Wall Sconce	2 - Type 2 3 - Type 3 4 - Type 4 Forward Throw	LED	3L - 3,000 lms 4L - 4,000 lms 5L - 5,000 lms 6L - 6,000 lms 7L - 7,000 lms 8L - 8,000 lms 9L - 9,000 lms 10L - 10,000 lms 11L - 11,000 lms 12L - 12,000 lms 13L - 13,000 lms 14L - 14,000 lms 15L - 15,000 lms	30 - 3000K 40 - 4000K 50 - 5000K 60 - 6000K 70 - 7000K 80 - 8000K 90 - 9000K 100 - 10000K 110 - 11000K 120 - 12000K 130 - 13000K 140 - 14000K 150 - 15000K	60 - Universal Voltage (20-277V) 90 - High Voltage (240-480V)

Finish	Controls (Choose One)	Options
<b>BLK</b> - Black <b>GRY</b> - Gun Metal Gray <b>WHI</b> - White <b>MTL</b> - Metallic Silver <b>PLT</b> - Platinum Plus <b>SWG</b> - Soft Work Green <b>WHT</b> - White	<b>ALS</b> - Ambient Light Sensor System <b>ASCS</b> - AirLink Synapse Control System with 12-20' Motion Sensor <b>ASCS2</b> - AirLink Synapse Control System with 12-20' Motion Sensor <b>ASCS4</b> - AirLink Synapse Control System with 20-40' Motion Sensor <b>ALSC4</b> - AirLink Synapse Control System with 20-40' Motion Sensor <b>ALSC4A</b> - AirLink Synapse Control System with 20-40' Motion Sensor <b>ALSC4B</b> - AirLink Synapse Control System with 20-40' Motion Sensor <b>ALSC4C</b> - AirLink Synapse Control System with 20-40' Motion Sensor <b>ALSC4D</b> - AirLink Synapse Control System with 20-40' Motion Sensor <b>ALSC4E</b> - AirLink Synapse Control System with 20-40' Motion Sensor <b>ALSC4F</b> - AirLink Synapse Control System with 20-40' Motion Sensor <b>ALSC4G</b> - AirLink Synapse Control System with 20-40' Motion Sensor <b>ALSC4H</b> - AirLink Synapse Control System with 20-40' Motion Sensor <b>ALSC4I</b> - AirLink Synapse Control System with 20-40' Motion Sensor <b>ALSC4J</b> - AirLink Synapse Control System with 20-40' Motion Sensor <b>ALSC4K</b> - AirLink Synapse Control System with 20-40' Motion Sensor <b>ALSC4L</b> - AirLink Synapse Control System with 20-40' Motion Sensor <b>ALSC4M</b> - AirLink Synapse Control System with 20-40' Motion Sensor <b>ALSC4N</b> - AirLink Synapse Control System with 20-40' Motion Sensor <b>ALSC4O</b> - AirLink Synapse Control System with 20-40' Motion Sensor <b>ALSC4P</b> - AirLink Synapse Control System with 20-40' Motion Sensor <b>ALSC4Q</b> - AirLink Synapse Control System with 20-40' Motion Sensor <b>ALSC4R</b> - AirLink Synapse Control System with 20-40' Motion Sensor <b>ALSC4S</b> - AirLink Synapse Control System with 20-40' Motion Sensor <b>ALSC4T</b> - AirLink Synapse Control System with 20-40' Motion Sensor <b>ALSC4U</b> - AirLink Synapse Control System with 20-40' Motion Sensor <b>ALSC4V</b> - AirLink Synapse Control System with 20-40' Motion Sensor <b>ALSC4W</b> - AirLink Synapse Control System with 20-40' Motion Sensor <b>ALSC4X</b> - AirLink Synapse Control System with 20-40' Motion Sensor <b>ALSC4Y</b> - AirLink Synapse Control System with 20-40' Motion Sensor <b>ALSC4Z</b> - AirLink Synapse Control System with 20-40' Motion Sensor	<b>MB</b> - Motion Back up (10') <b>CHM</b> - Cold Weather Rating (20°F) <b>DM</b> - Dimming (See Notes) <b>SP</b> - Surge Protection <b>IB</b> - Integral Inlet

LIGHTING FIXTURE 'S4'

Catalog #:
Project:

Prepared By:
Date:
Type:

## Mirada Large (MRL)

Outdoor LED Area Light



**OVERVIEW**

Lumen Package	40,000 - 78,000
Wattage Range	286 - 648
Efficacy Range (LPW)	115 - 154
Weight (lbs/kg)	60 (27.2)

**QUICK LINKS**

[Ordering Guide](#) | 
 [Performance](#) | 
 [Photometrics](#) | 
 [Dimensions](#)

Catalog #:
Project:

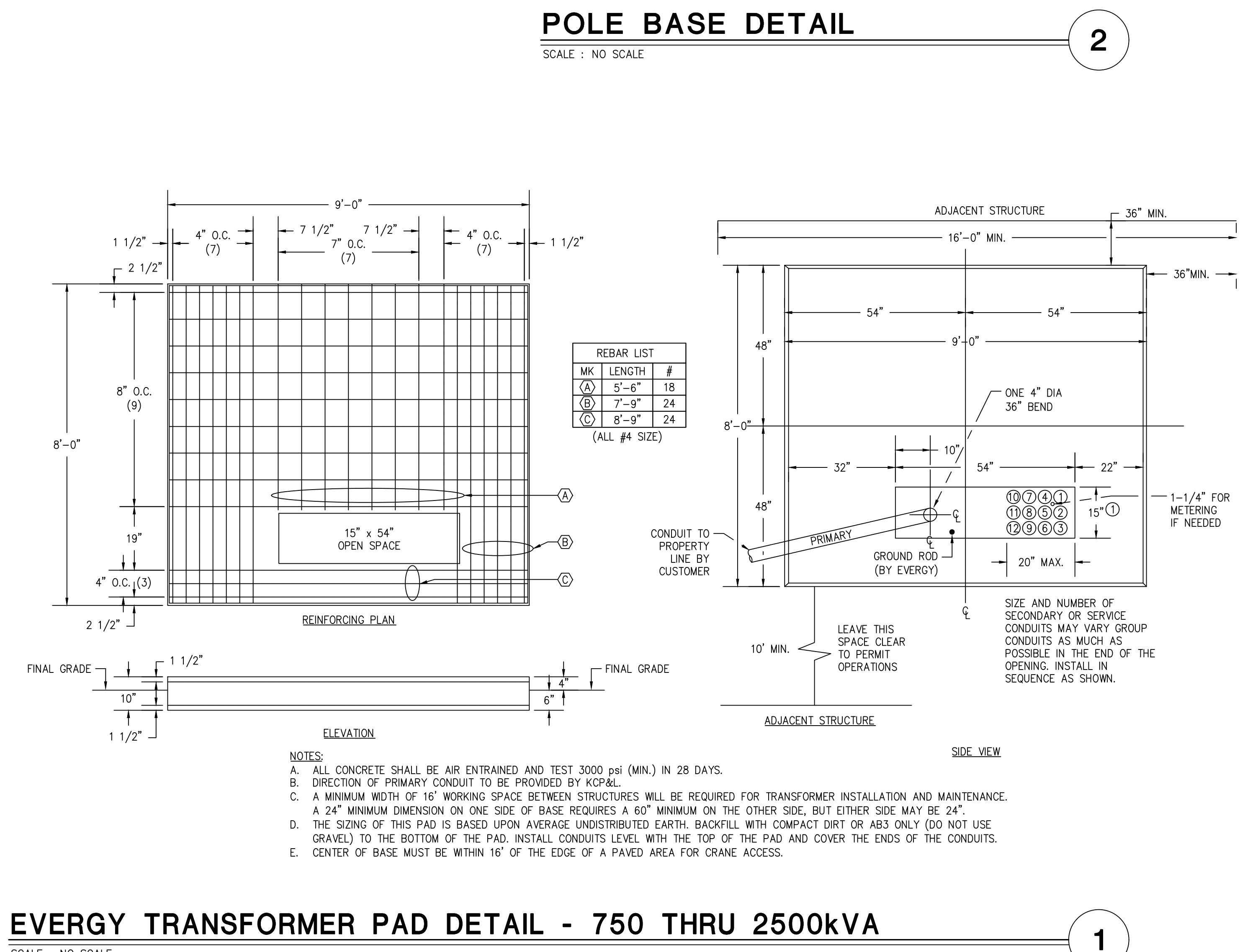
## Mirada Large Outdoor LED Area Light

[Back to Quick Links](#)

**TYPICAL ORDER EXAMPLE:** MRL LED 40L SIL FTA L UNV DIM 50 70CR ALS04 BRZ IL

Finish	Light Source	Lumen Package	Lens	Distribution	Orientation	Voltage
MRL - Mirada Large	LED	40L - 40,000 lms 50L - 50,000 lms 60L - 60,000 lms 70L - 70,000 lms	SIL - Silicone	2 - Type 2 3 - Type 3 4 - Type 4 5 - Type 5 6 - Type 6 7 - Type 7 8 - Type 8 9 - Type 9 10 - Type 10 11 - Type 11 12 - Type 12 13 - Type 13 14 - Type 14 15 - Type 15 16 - Type 16 17 - Type 17 18 - Type 18 19 - Type 19 20 - Type 20 21 - Type 21 22 - Type 22 23 - Type 23 24 - Type 24 25 - Type 25 26 - Type 26 27 - Type 27 28 - Type 28 29 - Type 29 30 - Type 30 31 - Type 31 32 - Type 32 33 - Type 33 34 - Type 34 35 - Type 35 36 - Type 36 37 - Type 37 38 - Type 38 39 - Type 39 40 - Type 40 41 - Type 41 42 - Type 42 43 - Type 43 44 - Type 44 45 - Type 45 46 - Type 46 47 - Type 47 48 - Type 48 49 - Type 49 50 - Type 50 51 - Type 51 52 - Type 52 53 - Type 53 54 - Type 54 55 - Type 55 56 - Type 56 57 - Type 57 58 - Type 58 59 - Type 59 60 - Type 60 61 - Type 61 62 - Type 62 63 - Type 63 64 - Type 64 65 - Type 65 66 - Type 66 67 - Type 67 68 - Type 68 69 - Type 69 70 - Type 70 71 - Type 71 72 - Type 72 73 - Type 73 74 - Type 74 75 - Type 75 76 - Type 76 77 - Type 77 78 - Type 78 79 - Type 79 80 - Type 80 81 - Type 81 82 - Type 82 83 - Type 83 84 - Type 84 85 - Type 85 86 - Type 86 87 - Type 87 88 - Type 88 89 - Type 89 90 - Type 90 91 - Type 91 92 - Type 92 93 - Type 93 94 - Type 94 95 - Type 95 96 - Type 96 97 - Type 97 98 - Type 98 99 - Type 99 100 - Type 100	60 - Universal Voltage (20-277V) 90 - High Voltage (240-480V)	

Finish	Color Rendering	Controls	Options
<b>BLK</b> - Black <b>GRY</b> - Gun Metal Gray <b>WHI</b> - White <b>MTL</b> - Metallic Silver <b>PLT</b> - Platinum Plus <b>SWG</b> - Soft Work Green <b>WHT</b> - White	<b>70CR</b> - 70 CRI <b>90CR</b> - 90 CRI	<b>ALS</b> - Ambient Light Sensor System <b>ASCS</b> - AirLink Synapse Control System with 12-20' Motion Sensor <b>ASCS2</b> - AirLink Synapse Control System with 12-20' Motion Sensor <b>ASCS4</b> - AirLink Synapse Control System with 20-40' Motion Sensor <b>ALSC4</b> - AirLink Synapse Control System with 20-40' Motion Sensor <b>ALSC4A</b> - AirLink Synapse Control System with 20-40' Motion Sensor <b>ALSC4B</b> - AirLink Synapse Control System with 20-40' Motion Sensor <b>ALSC4C</b> - AirLink Synapse Control System with 20-40' Motion Sensor <b>ALSC4D</b> - AirLink Synapse Control System with 20-40' Motion Sensor <b>ALSC4E</b> - AirLink Synapse Control System with 20-40' Motion Sensor <b>ALSC4F</b> - AirLink Synapse Control System with 20-40' Motion Sensor <b>ALSC4G</b> - AirLink Synapse Control System with 20-40' Motion Sensor <b>ALSC4H</b> - AirLink Synapse Control System with 20-40' Motion Sensor <b>ALSC4I</b> - AirLink Synapse Control System with 20-40' Motion Sensor <b>ALSC4J</b> - AirLink Synapse Control System with 20-40' Motion Sensor <b>ALSC4K</b> - AirLink Synapse Control System with 20-40' Motion Sensor <b>ALSC4L</b> - AirLink Synapse Control System with 20-40' Motion Sensor <b>ALSC4M</b> - AirLink Synapse Control System with 20-40' Motion Sensor <b>ALSC4N</b> - AirLink Synapse Control System with 20-40' Motion Sensor <b>ALSC4O</b> - AirLink Synapse Control System with 20-40' Motion Sensor <b>ALSC4P</b> - AirLink Synapse Control System with 20-40' Motion Sensor <b>ALSC4Q</b> - AirLink Synapse Control System with 20-40' Motion Sensor <b>ALSC4R</b> - AirLink Synapse Control System with 20-40' Motion Sensor <b>ALSC4S</b> - AirLink Synapse Control System with 20-40' Motion Sensor <b>ALSC4T</b> - AirLink Synapse Control System with 20-40' Motion Sensor <b>ALSC4U</b> - AirLink Synapse Control System with 20-40' Motion Sensor <b>ALSC4V</b> - AirLink Synapse Control System with 20-40' Motion Sensor <b>ALSC4W</b> - AirLink Synapse Control System with 20-40' Motion Sensor <b>ALSC4X</b> - AirLink Synapse Control System with 20-40' Motion Sensor <b>ALSC4Y</b> - AirLink Synapse Control System with 20-40' Motion Sensor <b>ALSC4Z</b> - AirLink Synapse Control System with 20-40' Motion Sensor	<b>MB</b> - Motion Back up (10') <b>CHM</b> - Cold Weather Rating (20°F) <b>DM</b> - Dimming (See Notes) <b>SP</b> - Surge Protection <b>IB</b> - Integral Inlet



Architect: MIDWEST ARCHITECTS  
1120 NW Eagle Ridge Blvd.  
Grain Valley, Missouri 64029  
t: (816) 229-8115

Client: Ward Development  
1120 NW Eagle Ridge Blvd.  
Grain Valley, Missouri 64029  
t: (816) 623-9888

Consultants: Civil Engineering: Engineering Solutions  
50 SE 30th Street  
Lee's Summit, Missouri 64082  
t: (816) 623-9888

Structural Engineering: Needham DBS  
15950 College Blvd  
Lenexa, KS 66219  
t: (813) 385-5300

MEP Engineering: JSC Engineers  
1925 Central Street, Suite 201  
Kansas City, MO 64108  
t: (816) 272-5289

Revisions to technical submissions which are not made or approved by the licensee are prohibited.

Seal: PRELIMINARY NOT FOR CONSTRUCTION

Project Number: 22-245  
Project Type: NEW CONSTRUCTION  
Project Name and Address: TOWN CENTRE 22, LOT 4  
NE Town Centre Blvd  
Lee's Summit, Missouri 64064

Issue: \_\_\_\_\_ Date: \_\_\_\_\_  
Bid Set: \_\_\_\_\_ 02.27.23

Sheet Title: SITE POWER PLAN DETAILS

E-004