

# ASL LED SERIES AREA/SITE/ROAD LIGHTER

Cat.#

Job

Type



**HUBBELL**  
Outdoor Lighting

Approvals

## SPECIFICATIONS

### Construction:

- Stylish vertically finned die-cast and extruded aluminum for maximum heat dissipation
- Separate optical and electrical compartment for improved thermal management and optimum component operation
- EPA: 8L – .50ft<sup>2</sup>  
16L – .62 ft<sup>2</sup>  
24L – .74 ft<sup>2</sup>

### Optics:

- Premium engineered individual acrylic lenses deliver IES Type II, III, IV and V distributions
- Lens distributions are field rotatable (in 90° increments) or exchangeable for job site fine-tuning
- 3000K, 4000K, or 5000K (70 CRI) CCT
- Zero uplight

### Electrical:

- Configured with 8, 16, or 24 high current and high output LEDs to replace 150, 250 and 400w HID respectively
- Universal 120-277 VAC input voltage, 50/60 Hz
- Single driver, 2100mA drive current
- Ambient operating temperature -40° C to 40° C
- Drivers have greater than 90% power factor and less than 20% THD
- LED drivers have output power over-voltage, over-current protection and short circuit protection with auto recovery
- Field replaceable surge protection device provides 10KA and 10KV protection meeting ANSI/IEEE C62.41.2 Category C High and Surge Location Category C3; Automatically takes fixture off-line for protection when device is consumed

### Controls:

- 0-10V dimming standard photocell, occupancy sensor and wireless available for complete on/off and dimming control
- 7-pin ANSI C136.41-2013 photocontrol receptacle option available for twist lock photocontrols or wireless control modules (control accessories sold separately)
- Dimming leads can be pulled for use with remote control devices, order as special

### Installation:

- Tool-less entry to wiring/driver compartment
- Universal mounting block works with #2 drill pattern (See page 4 illustration)
- Fixture ships with slotted mounting block to accommodate wide range of drill patterns for easy retrofit opportunities (See page 4 illustration for dimensions)
- Mast arm fitter accessory or option available for 2-3/8" OD brackets

### Finish:

- TGIC thermoset polyester powder paint finish applied at nominal 2.5 mil thickness

### Warranty:

Five year limited warranty (for more information visit: <http://www.hubbelloutdoor.com/resources/warranty/>)

### Listings:

- DesignLights Consortium (DLC) qualified, consult DLC website for more details: <http://www.designlights.org/QPL>
- Listed to UL1598 and CSA C22.2#250.0-24 for wet locations and 40°C ambient temperatures
- 3G rated for ANSI C136.31 high vibration applications
- IP65 optical assembly
- IDA approved

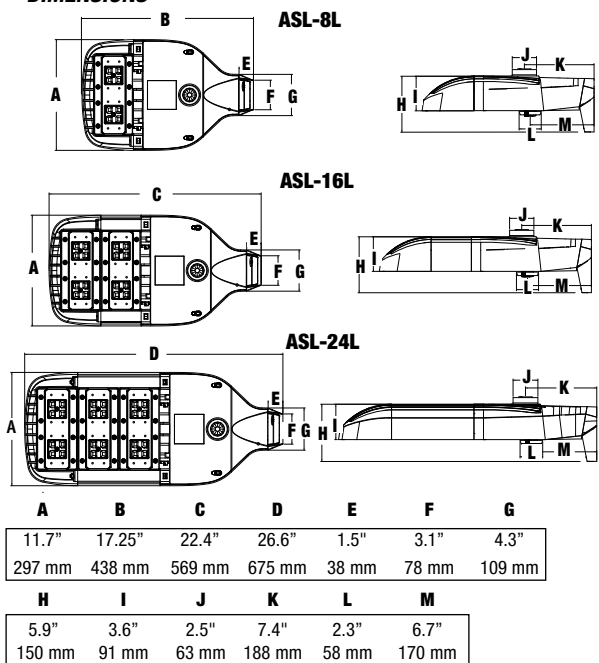
## PRODUCT IMAGE(S)

ASL-24L

ASL-16L

ASL-8L

## DIMENSIONS



## SHIPPING INFORMATION

Catalog Number	G.W(kg)/CTN	Carton Dimensions		
		Length Inch (cm)	Width Inch (cm)	Height Inch (cm)
ASL-8L	15 (6.8)	20.75 (52.7)	15.125 (38.4)	6.9375 (17.6)
ASL-16L	19 (8.6)	25 (63.5)	15.125 (38.4)	6.9375 (17.6)
ASL-24L	24 (10.8)	25 (63.5)	15.125 (38.4)	6.9375 (17.6)

## CERTIFICATIONS/LISTINGS



## ORDERING INFORMATION - STOCK CONFIGURATIONS

Catalog Number	Description	Distribution	Wattage	# Drivers Drive Current	Voltage	Color Temperature	Lumens	LPW	Weight lbs. (kg)
ASL-16L-3	Medium size 16 LED configuration, Dark Bronze	Type III	123	1@2100mA	120V-277V	4000K	11153	91	18 (8.16)
ASL-16L-4	Medium size 16 LED configuration, Dark Bronze	Type IV	123	1@2100mA	120V-277V	4000K	11417	93	18 (8.16)
ASL-24L-3	Large size 24 LED configuration, Dark Bronze	Type III	181	1@2100mA	120V-277V	4000K	16364	91	20 (9.07)
ASL-24L-4	Large size 24 LED configuration, Dark Bronze	Type IV	181	1@2100mA	120V-277V	4000K	16752	93	20 (9.07)

## CONFIGURABLE ORDERING INFORMATION NEXT PAGE



**HUBBELL**  
Outdoor Lighting

Hubbell Outdoor Lighting • 701 Millennium Boulevard • Greenville, SC 29607 • Phone: 864-678-1000

Due to our continued efforts to improve our products, product specifications are subject to change without notice.

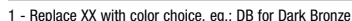
© 2015 HUBBELL OUTDOOR LIGHTING, All Rights Reserved • For more information visit our website: [www.hubbelloutdoor.com](http://www.hubbelloutdoor.com) • Printed in USA

ASLLED-SPEC 11/15

**ORDERING EXAMPLE: ASL-A-24L4K-210-4-U-DB**

1 – Contact factory for minimum order quantities  
2 – 7-pin ANSI C136.41—2013 receptacle for use with standard Twist-Lock® photo controls, shorting caps, and ANSI C136.41 external wireless control devices with and without motion/occupancy override

Catalog Number	Description
ASL-MAF	MAST arm kit with wildlife shield for mounting on 2 3/8" OD arms
RATA-XX <sup>1</sup>	Single round arm tenon fits 2 3/8" OD, requires ASL-MAF accessory kit for stocked configurations
SCP-REMOTE	Remote control for SCPW option. Order at least one per project to program and control
CR-RPA(X)-XX <sup>1</sup>	Round pole adapters are available for 3, 4, 5, and 6 inch diameter round poles. Requires universal mounting block option.
WB-CR-XX <sup>1</sup>	Wall bracket. Requires universal mounting block option.
PTL-1	Photocontrol - twist-lock cell (120V) - Requires 7PR option
PTL-8	Photocontrol - twist-lock cell (120-277V) - Requires 7PR option
PSC	Shorting cap - twist-lock - Requires 7PR option



## PERFORMANCE DATA

				5K (5000K nominal, 70 CRI)					4K (4000K nominal, 70 CRI)					3K (3000K nominal, 80 CRI)				
# OF LEDS	DRIVE CURRENT	SYSTEM WATTS	DIST. TYPE	LUMENS	LPW <sup>1</sup>	B	U	G	LUMENS	LPW <sup>1</sup>	B	U	G	LUMENS	LPW <sup>1</sup>	B	U	G
8	2100	62	2	6304	102	1	0	1	5775	93	1	0	1	5068	82	1	0	1
			3	6139	99	1	0	1	5624	91	1	0	1	4935	80	1	0	1
			4	6285	101	1	0	1	5757	93	1	0	1	5149	83	1	0	1
			5	6194	100	3	0	1	5674	92	3	0	1	4979	80	3	0	1
16		123	2	12502	102	2	0	2	11453	93	2	0	2	10441	85	2	0	2
			3	12175	99	2	0	2	11153	91	2	0	2	10168	83	2	0	2
			4	12463	101	2	0	2	11417	93	2	0	2	10409	85	2	0	2
			5	12283	100	4	0	2	11253	91	4	0	2	10259	83	4	0	2
24		181	2	18343	101	3	0	3	16804	93	3	0	3	15437	85	3	0	3
			3	17863	99	3	0	3	16364	90	3	0	3	15033	83	3	0	3
			4	18287	101	2	0	2	16752	93	2	0	2	15389	85	2	0	2
			5	18022	100	4	0	2	16510	91	4	0	2	15167	84	4	0	2

1 - Lumen values are from photometric tests performed in accordance with IESNA LM-79-08. Data is considered to be representative of the configurations shown. Actual performance may differ as a result of end-user environment and application.

## ELECTRICAL DATA

# OF LEDS	DRIVE CURRENT (mA)	INPUT VOLTAGE (V)	SYSTEM POWER (w)	CURRENT (Amps)
8	1@(2100mA)	120	62	0.52
		208	62	0.30
		240	62	0.26
		277	62	0.22
16		120	123	1.03
		208	123	0.60
		240	123	0.52
		277	123	0.45
24		120	181	1.49
		208	181	0.86
		240	181	0.74
		277	181	0.64

## LUMINAIRE AMBIENT TEMPERATURE FACTOR (LATF)

AMBIENT TEMPERATURE		LUMEN MULTIPLIER
0° C	32° F	1.06
10° C	50° F	1.03
20° C	68° F	1.01
25° C	77° F	1.00
30° C	86° F	0.99
40° C	104° F	0.97
50° C	122° F	0.94

Use these factors to determine relative lumen output for average ambient temperatures from 0-40°C (32-104°F).

## PROJECTED LUMEN MAINTENANCE

Ambient Temp.	OPERATING HOURS					L70 (hours)
	0	25,000	TM-21-11 <sup>1</sup> L90 36,000	50,000	100,000	
25°C / 77°F	1.00	0.93	0.90	0.86	0.75	>125,000
40°C / 104°F	0.99	0.90	0.86	0.81	0.67	>88,000

1. Projected per IESNA TM-21-11 (\* Cree XP-L, 2100mA, 105°C Ts, 6,000hrs)



**HUBBELL**  
Outdoor Lighting

Hubbell Outdoor Lighting • 701 Millennium Boulevard • Greenville, SC 29607 • Phone: 864-678-1000

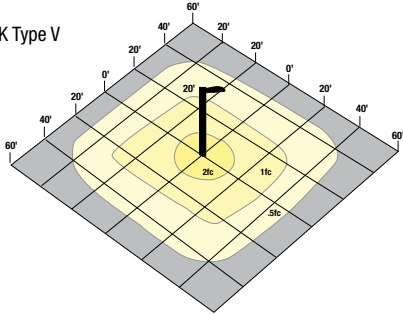
Due to our continued efforts to improve our products, product specifications are subject to change without notice.

© 2015 HUBBELL OUTDOOR LIGHTING, All Rights Reserved • For more information visit our website: [www.hubbelloutdoor.com](http://www.hubbelloutdoor.com) • Printed in USA

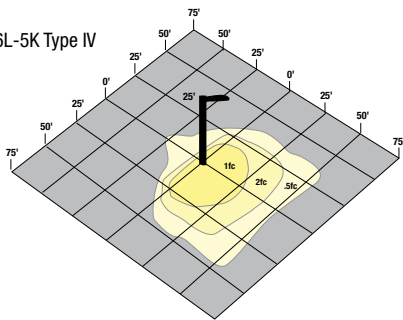
ASLED-SPEC 11/15

**PHOTOMETRICS** For additional photometric information and IES downloads, visit our web site at [www.hubbelloutdoor.com](http://www.hubbelloutdoor.com)

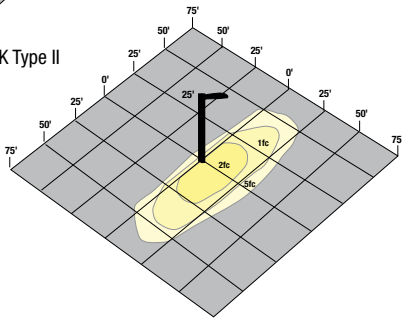
ASL-8L-5K Type V



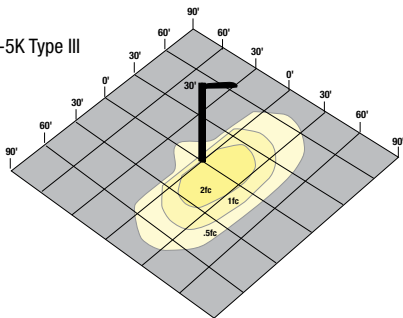
ASL-16L-5K Type IV



ASL-16L-5K Type II

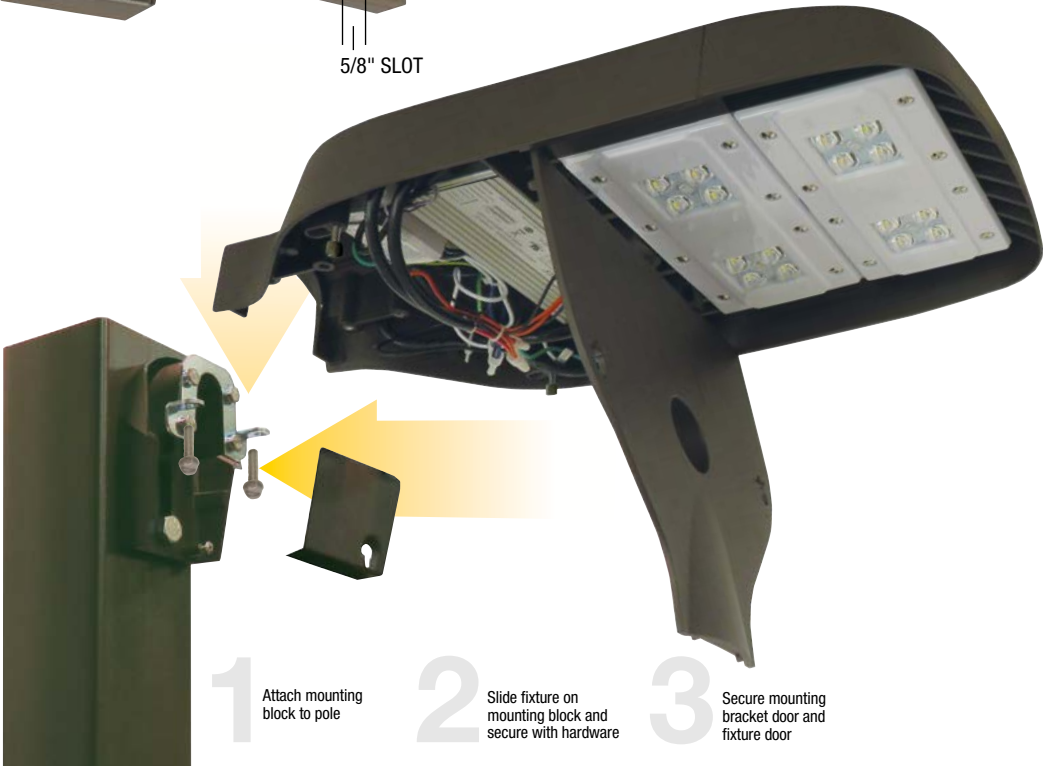
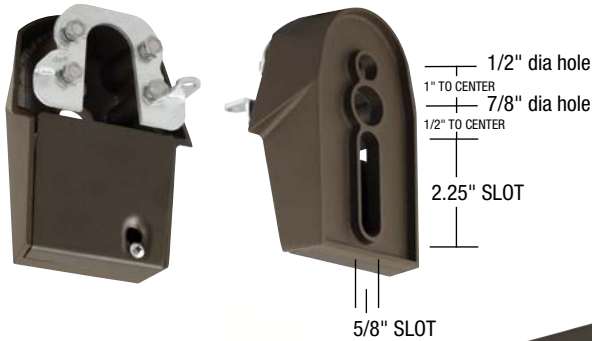


ASL-24L-5K Type III



**MOUNTING BLOCK**

Fixture ships with universal mounting block for ease of installation. Compatible with #2 drill pattern.



**HUBBELL**  
Outdoor Lighting

Hubbell Outdoor Lighting • 701 Millennium Boulevard • Greenville, SC 29607 • Phone: 864-678-1000

Due to our continued efforts to improve our products, product specifications are subject to change without notice.

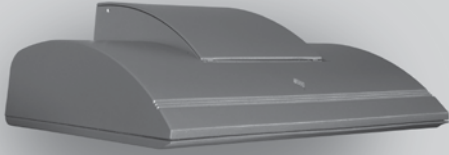
© 2015 HUBBELL OUTDOOR LIGHTING, All Rights Reserved • For more information visit our website: [www.hubbelloutdoor.com](http://www.hubbelloutdoor.com) • Printed in USA

ASLED-SPEC 11/15

# Wall Director

## Small Housing Scale - WD2S

Wall Mounted



### FEATURES

- -5° to +10° tilt adjustment
- High performance optics deliver up to 8,500 lumens
- Sleek architectural form factor
- Diffused lens option
- Programmable occupancy sensor (dimming)
- NX and SiteSync wireless controls
- 130+ lumens per watt
- IES and flood distributions available
- Optional inverted/up mounting



### ORDERING INFORMATION (Example)

WDS	D	24L	30	3K7	3	120	GT
FIXTURE	MOUNTING	SOURCE	WATTAGE	LIGHT ENGINE	DISTRIBUTION	VOLTAGE	FINISH
WDS Wall Director Small	D Down U <sup>1</sup> Up	24L 24 LEDs	30 30 Watts 40 40 Watts 60 60 Watts 75 75 Watts	3K7 3000K/70CRI 3K8 3000K/80CRI 4K7 4000K/70CRI 4K8 4000K/80CRI 5K7 5000K/70CRI	1 Type I 2 Type II 3 Type III 4W Type IV Wide 4F Type IV Forward SP Spot/Column WG <sup>2</sup> Wall Graze FTD <sup>2</sup> Front Throw Diffused WTD <sup>2</sup> Wide Throw Diffused	UNV 120-277V 347 <sup>3</sup> 347V 480 <sup>3</sup> 480V	BL Black DB Dark Bronze LG Light Gray GT Graphite PS Platinum Silver TT Titanium WH White CC Custom Color
PC				EM			
CONTROL OPTIONS				OPTIONS			
PC Button Photocell SCP-8F Programmable Occ. Sensor (<9' height) SCP-20F Programmable Occ. Sensor (9' - 20' height) SWP <sup>3</sup> SiteSync Wireless Pre-Commission SWPM <sup>3</sup> SiteSync Wireless w/Occupancy Sensor Pre-Commission NXWE <sup>5</sup> NX Wireless Enabled				EM <sup>4</sup> Integral Emergency Battery Backup SF Single Fuse & Fuse holder DF Double Fuse & Fuse holder			
				SWUSB			
				ACCESSORIES			
				SCPREMOTE SCP configuration tool SWUSB SiteSync Software on USB SWTAB SiteSync Windows® Tablet SWBRG SiteSync Software Bridge Node			

Microsoft, Encarta, MSN, and Windows are either registered trademarks or trademarks of Microsoft Corporation in the United States and/or other countries.

- <sup>1</sup> Not available with EM option or with SCP & SWPM sensor options  
<sup>2</sup> WG, FTD, and WTD come with a diffused lens.  
<sup>3</sup> 60 and 75 watt versions only  
<sup>4</sup> Universal voltage only (120-277), not available with PC option  
<sup>5</sup> 120-347V only

