



Eric Byrd - Engineer
Missouri: #FE-2018013633

ACI BOLAND ARCHITECTS

1710 Wyandotte
Kansas City, MO 64108
T: 816.763.9600

ACI/Boland, Inc.
Kansas City | St. Louis
Licensee's Certificate of Authority Number:
Missouri: #000958

CIVIL CONSULTANT

BHC
7101 College Blvd., Suite 400
Overland Park, KS 66210
(913) 663-1900

STRUCTURAL CONSULTANT

Bob D. Campbell & Co.
4338 Bellevue
Kansas City, MO 64111
(816) 531-4144

MEP CONSULTANT

Branch Pattern
1508 Grand Boulevard
Kansas City, MO 64108
(816) 531-2121

Surgery Center of Lee's Summit
1950 SE Shenandoah Drive
Lee's Summit, MO 64063

Date	01/13/23
Job Number	3-22030
Drawn By	TS
Checked By	EB

Number	Date	Description
1	2/14/23	Addendum 1
2	3/2/23	Addendum 3

UTILITY CONSTRUCTION NOTES

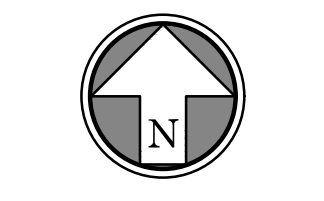
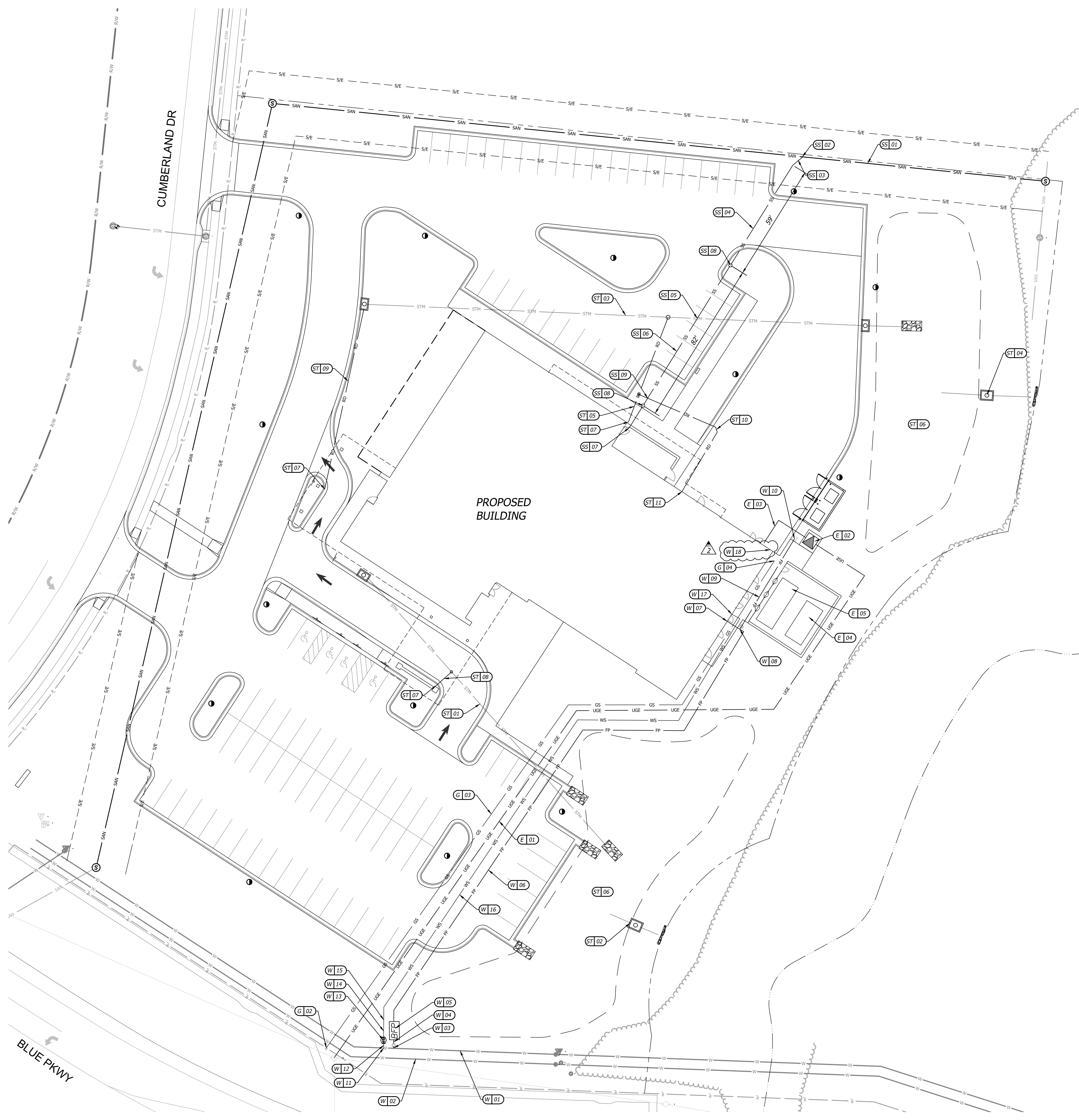
- W - WATER SERVICE INFORMATION - CITY OF LEE'S SUMMIT**
- 01 EXISTING 12" WATER MAIN
 - 02 EXISTING 20" WATER MAIN
 - 03 CONNECT TO WATER MAIN WITH 12"x6" TEE AND 6" GATE VALVE
 - 04 INSTALL 2 LF OF 6" C900 PVC FIRE PROTECTION LINE WITH MINIMUM DEPTH OF COVER OF 48"
 - 05 INSTALL 6" DOUBLE CHECK DETECTOR ASSEMBLY IN CONCRETE VAULT; SEE DETAIL ON DETAIL SHEETS VAULT SUMP TO INCLUDE 2-FOOT DIAMETER HOLE LINED WITH FILTER FABRIC AND FILL WITH CLEAN 3/4-INCH ROCK.
 - 06 INSTALL 290 LF OF 6" C900 PVC FIRE PROTECTION LINE WITH MINIMUM DEPTH OF COVER OF 48"
 - 07 CONNECT FIRE PROTECTION LINE TO BUILDING PLUMBING; SEE MEP PLANS
 - 08 INSTALL 6"x6" TEE.
 - 09 INSTALL 52 LF OF 6" C900 PVC FIRE PROTECTION LINE WITH MINIMUM DEPTH OF COVER OF 48"
 - 10 INSTALL FIRE HYDRANT ASSEMBLY
 - 11 CONNECT TO WATER MAIN WITH 2" CORPORATION STOP; REFER TO SERVICE CONNECTION DETAIL
 - 12 INSTALL 2 LF OF 2" TYPE K COPPER DOMESTIC SERVICE LINE WITH MINIMUM DEPTH OF COVER OF 48"
 - 13 INSTALL 2" DOMESTIC WATER METER IN PIT
 - 14 INSTALL 10 LF OF 2" TYPE K COPPER DOMESTIC SERVICE LINE WITH MINIMUM DEPTH OF COVER OF 48"
 - 15 INSTALL 2"x4" REDUCER
 - 16 INSTALL 290 LF OF 4" C900 PVC DOMESTIC SERVICE LINE WITH MINIMUM DEPTH OF COVER OF 48"
 - 17 CONNECT DOMESTIC SERVICE LINE TO BUILDING PLUMBING; SEE MEP PLANS
 - 18 FIRE DEPARTMENT CONNECTION
- E - ELECTRIC SERVICE INFORMATION - EVERGY**
- 01 CONTRACTOR TO INSTALL PRIMARY UNDERGROUND ELECTRIC SERVICE FROM ELECTRIC STRUCTURE TO TRANSFORMER PAD; COORDINATE WITH EVERGY
 - 02 PROPOSED TRANSFORMER PAD
 - 03 CONTRACTOR TO INSTALL SECONDARY UNDERGROUND ELECTRIC SERVICE LINE FROM PROPOSED TRANSFORMER TO BUILDING; REF. ELECTRICAL PLAN
 - 04 PROPOSED CHILLER; REF. ELECTRICAL PLAN
 - 05 PROPOSED BACKUP GENERATOR; REF. ELECTRICAL PLAN
- G - GAS SERVICE INFORMATION - SPIRE**
- 01 CONNECT TO EXISTING GAS MAIN FOR SERVICE LINE; COORDINATE W/ SPIRE
 - 02 INSTALL 350 LF GAS SERVICE LINE
 - 03 PROPOSED METER & GAS CONNECTION TO BLDG.; RE: PLUMBING PLAN
- ST - STORM SEWER INFORMATION - CITY OF LEE'S SUMMIT**
- 01 STORM SEWER LINE 100; RE: SHEET C6.1
 - 02 STORM SEWER LINE 200; RE: SHEET C6.1
 - 03 STORM SEWER LINE 300; RE: SHEET C6.2
 - 04 STORM SEWER LINE 400; RE: SHEET C6.2
 - 05 STORM SEWER LINE 500; RE: SHEET C6.2
 - 06 EXTENDED DRY DETENTION BASIN
 - 07 CONNECT TO ROOF DRAIN LINE
 - 08 INSTALL 10 LF OF 4" HDPE ROOF DRAIN LINE; CONNECT TO DRAIN BASIN; FL = 1000.50
 - 09 INSTALL 90 LF OF 4" HDPE ROOF DRAIN LINE; CONNECT TO CURB INLET; FL = 999.75
 - 10 INSTALL 75 LF OF 4" HDPE ROOF DRAIN LINE; CONNECT TO DRAIN BASIN; FL = 1000.00
 - 11 CONNECT TO DOWNSPOUT
- SS - SANITARY SEWER INFORMATION - CITY OF LEE'S SUMMIT**
- 01 8" SANITARY MAIN LINE INSTALLED BY SEPARATE SET OF PLANS
 - 02 PROPOSED 8"x6" PVC WYE CONNECTION; MAIN FL = 985.62; SERVICE FL = 986.29
 - 03 INSTALL 7 LF 6" SDR-26 PVC RISER @ 100% SLOPE
 - 04 INSTALL 90 LF 6" SDR-26 PVC SANITARY SEWER SERVICE LINE AT 2% SLOPE
 - 05 SANITARY SERVICE CROSSING WITH STORM SEWER; FL = 995.00
 - 06 INSTALL 64 LF 6" SDR-26 PVC SANITARY SEWER SERVICE LINE AT 7% SLOPE
 - 07 CONNECT TO BUILDING PLUMBING WITH FL = 999.50; REF. PLUMBING PLAN
 - 08 INSTALL SANITARY CLEANOUT
 - 09 SANITARY SERVICE CROSSING WITH STORM SEWER; FL = 998.30

UTILITY CONTACTS

- PLANNING AND DEVELOPMENT**
CITY HALL
JOSH JOHNSON
220 SE GREEN STREET
LEE'S SUMMIT, MO 64063
TEL: (816) 969-1600
FAX: (816) 969-1619
- PUBLIC WORKS**
CITY HALL
220 SE GREEN STREET
LEE'S SUMMIT, MO 64063
TEL: (816) 969-1800
FAX: (816) 969-1809
- LEE'S SUMMIT FIRE DEPARTMENT**
207 SE DOUGLAS ROAD
LEE'S SUMMIT, MO 64063
TEL: (816) 969-1300
- TELEPHONE COMPANY**
AT&T
TEL: (800) 464-7928
- CODES ADMINISTRATION**
CITY HALL
220 SE GREEN STREET
LEE'S SUMMIT, MO 64063
TEL: (816) 969-1200
FAX: (816) 969-1201
- WATER UTILITIES**
CITY HALL
1200 SE HAMBLEN RD
LEE'S SUMMIT, MO 64063
TEL: (816) 969-1900
FAX: (816) 969-1935
- ELECTRIC COMPANY**
EVERGY
TEL: (888) 471-5275
- GAS COMPANY**
MISSOURI GAS ENERGY
TEL: (816) 756-5252

UTILITY GENERAL NOTES

- CONTRACTOR SHALL REFER TO ALL SPECIFICATIONS, GUIDELINES, AND INSTALLATION DRAWINGS FROM KCWATER, SPIRE GAS SERVICE, TIME WARNER/AT&T, AND EVERGY FOR THE INSTALLATION OF ALL SERVICE LINES.
- THE INFORMATION SHOWN ON THESE PLANS CONCERNING THE TYPE AND LOCATION OF UNDERGROUND UTILITIES IS NOT GUARANTEED TO BE ACCURATE OR ALL INCLUSIVE. THE CONTRACTOR IS RESPONSIBLE FOR CONTACTING ALL UTILITY COMPANIES FOR FIELD LOCATION OF ALL UNDERGROUND UTILITY LINES PRIOR TO ANY EXCAVATION AND FOR MAKING HIS OWN VERIFICATION AS TO TYPE AND LOCATION OF UNDERGROUND UTILITIES AS MAY BE NECESSARY TO AVOID DAMAGE THERETO.
- CONTRACTOR TO ENSURE 6" MINIMUM SEPARATION BETWEEN UTILITIES AT CROSSINGS. CONTRACTOR TO CALL CIVIL IF ANY CONFLICTS BETWEEN UTILITIES ARE FOUND.
- FIRE LINE NOTES:
 - ALL PRIVATE FIRE LINES SHALL BE INSTALLED IN ACCORDANCE WITH NFPA 24, AND OTHER APPLICABLE CODES AND STANDARDS.
 - CONTACT THE FIRE DEPARTMENT TO SCHEDULE INSPECTIONS PRIOR TO PRIVATE FIRE LINES BEING BACKFILLED.
 - CONTACT THE FIRE DEPARTMENT TO WITNESS SCHEDULED HYDROSTATIC TESTS AND FLUSHES OF PRIVATE FIRE LINES.
- STUB ALL CONNECTIONS TO WITHIN 5' OF THE BUILDING TO PROVIDE CONNECTION INTO THE BUILDING BY MECHANICAL/PLUMBING CONTRACTOR.
- CONTRACTOR TO ENSURE MIN. 18" VERTICAL SEPARATION BETWEEN UTILITIES AT CROSSING. CONTRACTOR TO CALL ENGINEER IF ANY CONFLICTS BETWEEN UTILITIES ARE FOUND.
- ALL WATER SERVICE INSTALLATIONS INCLUDING BACKFLOW DEVICES ARE SUBJECT TO FIELD VERIFICATION AND APPROVAL BY THE WATER DEPARTMENT INSPECTOR.



Mar 02, 2023 - 10:00am Plotted By: Eric Byrd P:\024680-hca-lmc-ae\04-206\Eng\Sheet\02\1024680-SMPS-UTIL.dwg Layout: UTILITY PLAN